



Full wwPDB X-ray Structure Validation Report ⓘ

Feb 1, 2016 – 07:51 PM GMT

PDB ID : 4Q50
Title : The Estrogen Receptor Alpha Ligand Binding Domain D538G Mutant in Complex with 4-hydroxytamoxifen
Authors : Fanning, S.W.; Greene, G.L.
Deposited on : 2014-04-15
Resolution : 3.07 Å(reported)

This is a Full wwPDB X-ray Structure Validation Report for a publicly released PDB entry.
We welcome your comments at validation@mail.wwpdb.org
A user guide is available at
<http://wwpdb.org/validation/2016/XrayValidationReportHelp>
with specific help available everywhere you see the ⓘ symbol.

The following versions of software and data (see [references ⓘ](#)) were used in the production of this report:

MolProbity : 4.02b-467
Mogul : 1.7 (RC4), CSD as536be (2015)
Xtriage (Phenix) : 1.9-1692
EDS : rb-20026688
Percentile statistics : 20151230.v01 (using entries in the PDB archive December 30th 2015)
Refmac : 5.8.0135
CCP4 : 6.5.0
Ideal geometry (proteins) : Engh & Huber (2001)
Ideal geometry (DNA, RNA) : Parkinson et al. (1996)
Validation Pipeline (wwPDB-VP) : trunk26865

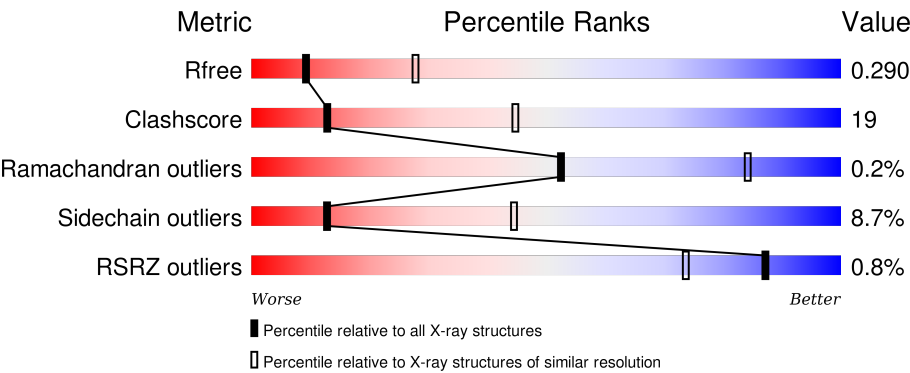
1 Overall quality at a glance i

The following experimental techniques were used to determine the structure:

X-RAY DIFFRACTION

The reported resolution of this entry is 3.07 Å.

Percentile scores (ranging between 0-100) for global validation metrics of the entry are shown in the following graphic. The table shows the number of entries on which the scores are based.



Metric	Whole archive (#Entries)	Similar resolution (#Entries, resolution range(Å))
R _{free}	91344	1119 (3.12-3.04)
Clashscore	102246	1098 (3.10-3.06)
Ramachandran outliers	100387	1057 (3.10-3.06)
Sidechain outliers	100360	1057 (3.10-3.06)
RSRZ outliers	91569	1001 (3.10-3.06)

The table below summarises the geometric issues observed across the polymeric chains and their fit to the electron density. The red, orange, yellow and green segments on the lower bar indicate the fraction of residues that contain outliers for >=3, 2, 1 and 0 types of geometric quality criteria. A grey segment represents the fraction of residues that are not modelled. The numeric value for each fraction is indicated below the corresponding segment, with a dot representing fractions <=5%. The upper red bar (where present) indicates the fraction of residues that have poor fit to the electron density. The numeric value is given above the bar.

Mol	Chain	Length	Quality of chain
1	A	260	<div><div></div><div>45%30%5%19%</div></div>
1	B	260	<div><div></div><div>51%26%••20%</div></div>
1	C	260	<div><div></div><div>51%30%••15%</div></div>
1	D	260	<div><div></div><div>51%30%•17%</div></div>
1	E	260	<div><div></div><div>53%27%•16%</div></div>

Continued on next page...

Continued from previous page...

Mol	Chain	Length	Quality of chain
1	F	260	
1	G	260	
1	H	260	

The following table lists non-polymeric compounds, carbohydrate monomers and non-standard residues in protein, DNA, RNA chains that are outliers for geometric or electron-density-fit criteria:

Mol	Type	Chain	Res	Chirality	Geometry	Clashes	Electron density
3	SO4	B	602	-	X	-	-
3	SO4	H	602	-	-	X	-

2 Entry composition

There are 4 unique types of molecules in this entry. The entry contains 14071 atoms, of which 0 are hydrogens and 0 are deuteriums.

In the tables below, the ZeroOcc column contains the number of atoms modelled with zero occupancy, the AltConf column contains the number of residues with at least one atom in alternate conformation and the Trace column contains the number of residues modelled with at most 2 atoms.

- Molecule 1 is a protein called Estrogen receptor.

Mol	Chain	Residues	Atoms					ZeroOcc	AltConf	Trace
1	A	210	Total	C	N	O	S	0	0	0
			1675	1078	286	295	16			
1	B	209	Total	C	N	O	S	0	1	0
			1669	1071	285	295	18			
1	C	220	Total	C	N	O	S	0	0	0
			1745	1120	296	312	17			
1	D	216	Total	C	N	O	S	0	0	0
			1716	1100	293	305	18			
1	E	218	Total	C	N	O	S	0	1	0
			1750	1126	297	309	18			
1	F	220	Total	C	N	O	S	0	1	0
			1757	1129	296	315	17			
1	G	219	Total	C	N	O	S	0	4	0
			1754	1126	295	313	20			
1	H	218	Total	C	N	O	S	0	4	0
			1751	1127	294	312	18			

There are 40 discrepancies between the modelled and reference sequences:

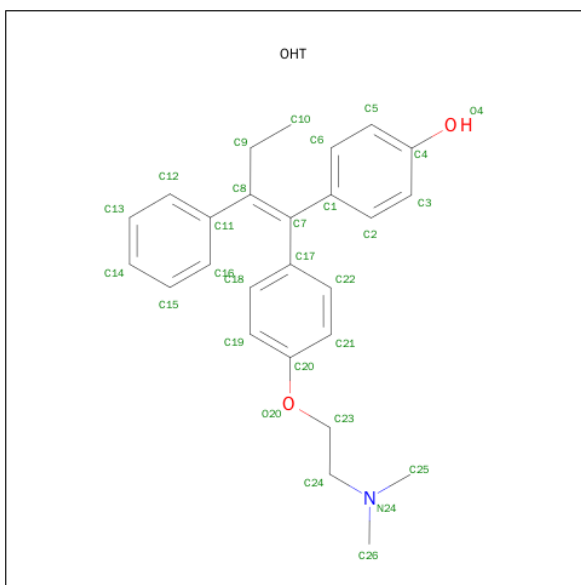
Chain	Residue	Modelled	Actual	Comment	Reference
A	295	SER	-	EXPRESSION TAG	UNP P03372
A	296	ASN	-	EXPRESSION TAG	UNP P03372
A	297	ALA	-	EXPRESSION TAG	UNP P03372
A	298	MET	-	EXPRESSION TAG	UNP P03372
A	538	GLY	ASP	ENGINEERED MUTATION	UNP P03372
B	295	SER	-	EXPRESSION TAG	UNP P03372
B	296	ASN	-	EXPRESSION TAG	UNP P03372
B	297	ALA	-	EXPRESSION TAG	UNP P03372
B	298	MET	-	EXPRESSION TAG	UNP P03372
B	538	GLY	ASP	ENGINEERED MUTATION	UNP P03372
C	295	SER	-	EXPRESSION TAG	UNP P03372
C	296	ASN	-	EXPRESSION TAG	UNP P03372
C	297	ALA	-	EXPRESSION TAG	UNP P03372

Continued on next page...

Continued from previous page...

Chain	Residue	Modelled	Actual	Comment	Reference
C	298	MET	-	EXPRESSION TAG	UNP P03372
C	538	GLY	ASP	ENGINEERED MUTATION	UNP P03372
D	295	SER	-	EXPRESSION TAG	UNP P03372
D	296	ASN	-	EXPRESSION TAG	UNP P03372
D	297	ALA	-	EXPRESSION TAG	UNP P03372
D	298	MET	-	EXPRESSION TAG	UNP P03372
D	538	GLY	ASP	ENGINEERED MUTATION	UNP P03372
E	295	SER	-	EXPRESSION TAG	UNP P03372
E	296	ASN	-	EXPRESSION TAG	UNP P03372
E	297	ALA	-	EXPRESSION TAG	UNP P03372
E	298	MET	-	EXPRESSION TAG	UNP P03372
E	538	GLY	ASP	ENGINEERED MUTATION	UNP P03372
F	295	SER	-	EXPRESSION TAG	UNP P03372
F	296	ASN	-	EXPRESSION TAG	UNP P03372
F	297	ALA	-	EXPRESSION TAG	UNP P03372
F	298	MET	-	EXPRESSION TAG	UNP P03372
F	538	GLY	ASP	ENGINEERED MUTATION	UNP P03372
G	295	SER	-	EXPRESSION TAG	UNP P03372
G	296	ASN	-	EXPRESSION TAG	UNP P03372
G	297	ALA	-	EXPRESSION TAG	UNP P03372
G	298	MET	-	EXPRESSION TAG	UNP P03372
G	538	GLY	ASP	ENGINEERED MUTATION	UNP P03372
H	295	SER	-	EXPRESSION TAG	UNP P03372
H	296	ASN	-	EXPRESSION TAG	UNP P03372
H	297	ALA	-	EXPRESSION TAG	UNP P03372
H	298	MET	-	EXPRESSION TAG	UNP P03372
H	538	GLY	ASP	ENGINEERED MUTATION	UNP P03372

- Molecule 2 is 4-HYDROXYTAMOXIFEN (three-letter code: OHT) (formula: C₂₆H₂₉NO₂).



Mol	Chain	Residues	Atoms				ZeroOcc	AltConf
2	A	1	Total	C	N	O	0	0
			29	26	1	2		
2	B	1	Total	C	N	O	0	0
			29	26	1	2		
2	C	1	Total	C	N	O	0	0
			29	26	1	2		
2	D	1	Total	C	N	O	0	0
			29	26	1	2		
2	E	1	Total	C	N	O	0	0
			29	26	1	2		
2	F	1	Total	C	N	O	0	0
			29	26	1	2		
2	G	1	Total	C	N	O	0	0
			29	26	1	2		
2	H	1	Total	C	N	O	0	0
			29	26	1	2		

- Molecule 3 is SULFATE ION (three-letter code: SO4) (formula: O₄S).



Mol	Chain	Residues	Atoms			ZeroOcc	AltConf
3	B	1	Total	O	S	0	0
			5	4	1		
3	H	1	Total	O	S	0	0
			5	4	1		

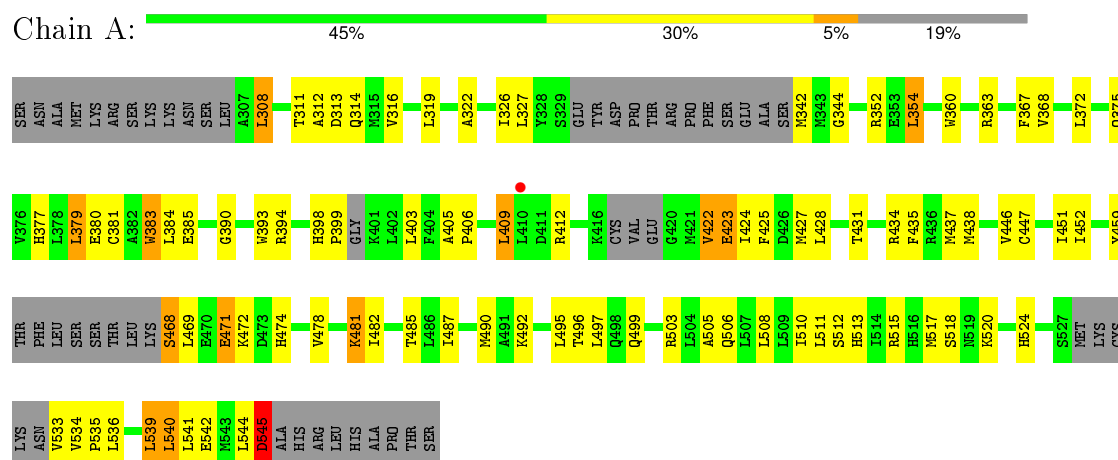
- Molecule 4 is water.

Mol	Chain	Residues	Atoms		ZeroOcc	AltConf
4	A	3	Total	O	0	0
			3	3		
4	B	1	Total	O	0	0
			1	1		
4	C	4	Total	O	0	0
			4	4		
4	D	1	Total	O	0	0
			1	1		
4	E	1	Total	O	0	0
			1	1		
4	G	2	Total	O	0	0
			2	2		

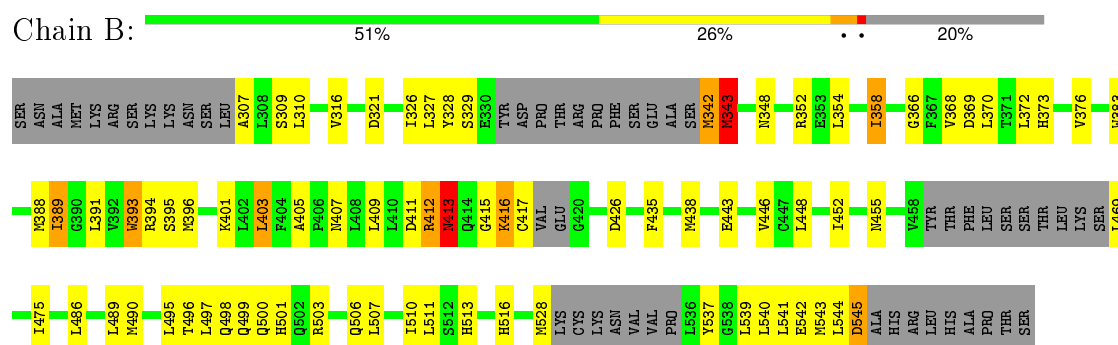
3 Residue-property plots

These plots are drawn for all protein, RNA and DNA chains in the entry. The first graphic for a chain summarises the proportions of errors displayed in the second graphic. The second graphic shows the sequence view annotated by issues in geometry and electron density. Residues are color-coded according to the number of geometric quality criteria for which they contain at least one outlier: green = 0, yellow = 1, orange = 2 and red = 3 or more. A red dot above a residue indicates a poor fit to the electron density ($RSRZ > 2$). Stretches of 2 or more consecutive residues without any outlier are shown as a green connector. Residues present in the sample, but not in the model, are shown in grey.

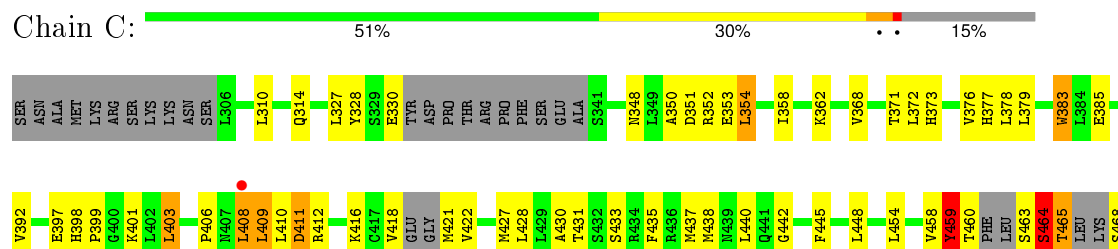
• Molecule 1: Estrogen receptor



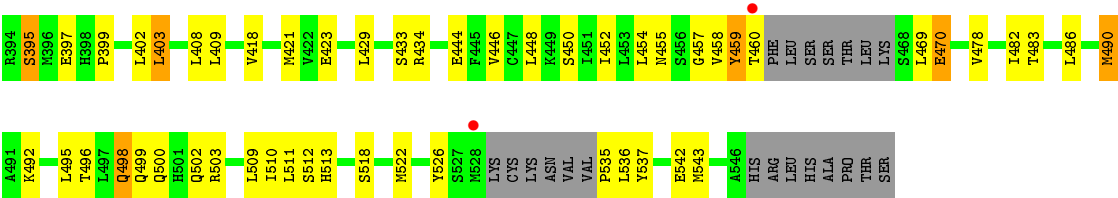
• Molecule 1: Estrogen receptor



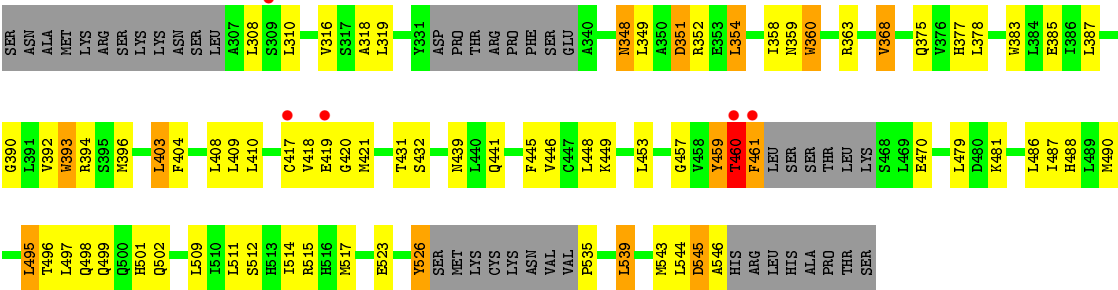
• Molecule 1: Estrogen receptor







• Molecule 1: Estrogen receptor



4 Data and refinement statistics

Property	Value	Source
Space group	P 21 21 21	Depositor
Cell constants a, b, c, α , β , γ	104.65Å 165.24Å 191.38Å 90.00° 90.00° 90.00°	Depositor
Resolution (Å)	50.00 – 3.07 48.74 – 3.07	Depositor EDS
% Data completeness (in resolution range)	96.7 (50.00-3.07) 95.7 (48.74-3.07)	Depositor EDS
R_{merge}	(Not available)	Depositor
R_{sym}	(Not available)	Depositor
$\langle I/\sigma(I) \rangle$ ¹	1.82 (at 3.07Å)	Xtriage
Refinement program	REFMAC 5.6.0117	Depositor
R, R_{free}	0.216 , 0.283 0.225 , 0.290	Depositor DCC
R_{free} test set	3032 reflections (5.31%)	DCC
Wilson B-factor (Å ²)	64.6	Xtriage
Anisotropy	0.057	Xtriage
Bulk solvent k_{sol} (e/Å ³), B_{sol} (Å ²)	0.33 , 52.3	EDS
Estimated twinning fraction	No twinning to report.	Xtriage
L-test for twinning ²	$\langle L \rangle = 0.49$, $\langle L^2 \rangle = 0.32$	Xtriage
Outliers	6 of 60160 reflections (0.010%)	Xtriage
F_o, F_c correlation	0.93	EDS
Total number of atoms	14071	wwPDB-VP
Average B, all atoms (Å ²)	59.0	wwPDB-VP

Xtriage's analysis on translational NCS is as follows: *The analyses of the Patterson function reveals a significant off-origin peak that is 45.46 % of the origin peak, indicating pseudo translational symmetry. The chance of finding a peak of this or larger height randomly in a structure without pseudo translational symmetry is equal to 1.3182e-04. The detected translational NCS is most likely also responsible for the elevated intensity ratio.*

¹ Intensities estimated from amplitudes.

² Theoretical values of $\langle |L| \rangle$, $\langle L^2 \rangle$ for acentric reflections are 0.5, 0.375 respectively for untwinned datasets, and 0.333, 0.2 for perfectly twinned datasets.

5 Model quality

5.1 Standard geometry

Bond lengths and bond angles in the following residue types are not validated in this section: OHT, SO4

The Z score for a bond length (or angle) is the number of standard deviations the observed value is removed from the expected value. A bond length (or angle) with $|Z| > 5$ is considered an outlier worth inspection. RMSZ is the root-mean-square of all Z scores of the bond lengths (or angles).

Mol	Chain	Bond lengths		Bond angles	
		RMSZ	# $ Z > 5$	RMSZ	# $ Z > 5$
1	A	0.73	2/1701 (0.1%)	0.93	1/2292 (0.0%)
1	B	0.77	2/1697 (0.1%)	0.95	4/2284 (0.2%)
1	C	0.71	1/1771 (0.1%)	1.02	7/2388 (0.3%)
1	D	0.76	2/1742 (0.1%)	0.96	2/2346 (0.1%)
1	E	0.67	0/1779	0.98	7/2397 (0.3%)
1	F	0.70	1/1789 (0.1%)	0.88	3/2410 (0.1%)
1	G	0.69	3/1795 (0.2%)	0.91	1/2420 (0.0%)
1	H	0.67	2/1793 (0.1%)	0.91	4/2418 (0.2%)
All	All	0.71	13/14067 (0.1%)	0.94	29/18955 (0.2%)

Chiral center outliers are detected by calculating the chiral volume of a chiral center and verifying if the center is modelled as a planar moiety or with the opposite hand. A planarity outlier is detected by checking planarity of atoms in a peptide group, atoms in a mainchain group or atoms of a sidechain that are expected to be planar.

Mol	Chain	#Chirality outliers	#Planarity outliers
1	A	0	1

All (13) bond length outliers are listed below:

Mol	Chain	Res	Type	Atoms	Z	Observed(Å)	Ideal(Å)
1	A	383	TRP	CD2-CE2	5.93	1.48	1.41
1	F	360	TRP	CD2-CE2	5.91	1.48	1.41
1	B	393	TRP	CD2-CE2	5.82	1.48	1.41
1	C	383	TRP	CD2-CE2	5.74	1.48	1.41
1	H	393	TRP	CD2-CE2	5.60	1.48	1.41
1	D	393	TRP	CD2-CE2	5.56	1.48	1.41
1	D	383	TRP	CD2-CE2	5.35	1.47	1.41
1	B	383	TRP	CD2-CE2	5.33	1.47	1.41
1	H	360	TRP	CD2-CE2	5.31	1.47	1.41
1	G	393	TRP	CD2-CE2	5.26	1.47	1.41

Continued on next page...

Continued from previous page...

Mol	Chain	Res	Type	Atoms	Z	Observed(Å)	Ideal(Å)
1	A	360	TRP	CD2-CE2	5.20	1.47	1.41
1	G	360	TRP	CD2-CE2	5.17	1.47	1.41
1	G	383	TRP	CD2-CE2	5.10	1.47	1.41

All (29) bond angle outliers are listed below:

Mol	Chain	Res	Type	Atoms	Z	Observed(°)	Ideal(°)
1	E	398	HIS	C-N-CD	-16.83	83.58	120.60
1	C	465	THR	N-CA-CB	16.43	141.51	110.30
1	C	464	SER	CB-CA-C	10.65	130.33	110.10
1	E	528	MET	N-CA-CB	-9.85	92.87	110.60
1	H	460	THR	N-CA-C	9.68	137.13	111.00
1	E	528	MET	N-CA-C	9.58	136.85	111.00
1	B	343	MET	N-CA-C	-9.30	85.88	111.00
1	E	398	HIS	N-CA-C	-8.66	87.62	111.00
1	H	461	PHE	N-CA-CB	7.50	124.10	110.60
1	C	459	TYR	CB-CA-C	7.01	124.41	110.40
1	H	460	THR	CB-CA-C	-6.91	92.93	111.60
1	F	396	MET	CB-CA-C	-6.69	97.02	110.40
1	G	459	TYR	N-CA-CB	6.50	122.30	110.60
1	C	465	THR	N-CA-C	-6.42	93.66	111.00
1	E	398	HIS	CB-CA-C	6.29	122.99	110.40
1	C	545	ASP	CB-CA-C	-5.86	98.68	110.40
1	H	459	TYR	CB-CA-C	5.86	122.12	110.40
1	C	546	ALA	N-CA-CB	-5.80	101.98	110.10
1	E	309	SER	CB-CA-C	5.72	120.97	110.10
1	D	528	MET	N-CA-CB	-5.65	100.43	110.60
1	C	403	LEU	CA-CB-CG	5.52	127.99	115.30
1	F	352	ARG	NE-CZ-NH2	-5.33	117.64	120.30
1	B	412	ARG	CB-CA-C	-5.29	99.82	110.40
1	E	309	SER	N-CA-C	-5.22	96.92	111.00
1	A	545	ASP	N-CA-CB	5.21	119.98	110.60
1	B	413	ASN	N-CA-C	5.20	125.03	111.00
1	D	537	TYR	N-CA-C	5.12	124.81	111.00
1	B	403	LEU	CB-CA-C	5.08	119.85	110.20
1	F	541	LEU	CA-CB-CG	5.05	126.92	115.30

There are no chirality outliers.

All (1) planarity outliers are listed below:

Mol	Chain	Res	Type	Group
1	A	469	LEU	Peptide

5.2 Too-close contacts ⓘ

In the following table, the Non-H and H(model) columns list the number of non-hydrogen atoms and hydrogen atoms in the chain respectively. The H(added) column lists the number of hydrogen atoms added and optimized by MolProbity. The Clashes column lists the number of clashes within the asymmetric unit, whereas Symm-Clashes lists symmetry related clashes.

Mol	Chain	Non-H	H(model)	H(added)	Clashes	Symm-Clashes
1	A	1675	0	1725	75	0
1	B	1669	0	1724	74	0
1	C	1745	0	1799	102	0
1	D	1716	0	1774	67	0
1	E	1750	0	1794	62	0
1	F	1757	0	1798	38	0
1	G	1754	0	1808	82	0
1	H	1751	0	1803	75	0
2	A	29	0	28	4	0
2	B	29	0	28	2	0
2	C	29	0	29	7	0
2	D	29	0	28	5	0
2	E	29	0	29	3	0
2	F	29	0	29	4	0
2	G	29	0	28	5	0
2	H	29	0	29	4	0
3	B	5	0	0	0	0
3	H	5	0	0	2	0
4	A	3	0	0	1	0
4	B	1	0	0	0	0
4	C	4	0	0	0	0
4	D	1	0	0	0	0
4	E	1	0	0	0	0
4	G	2	0	0	0	0
All	All	14071	0	14453	548	0

The all-atom clashscore is defined as the number of clashes found per 1000 atoms (including hydrogen atoms). The all-atom clashscore for this structure is 19.

All (548) close contacts within the same asymmetric unit are listed below, sorted by their clash magnitude.

Atom-1	Atom-2	Interatomic distance (Å)	Clash overlap (Å)
1:H:460:THR:O	1:H:461:PHE:CD1	1.75	1.40
1:G:377:HIS:NE2	1:G:460:THR:HG23	1.57	1.19
1:B:540:LEU:O	1:B:544:LEU:HD12	1.40	1.16

Continued on next page...

Continued from previous page...

Atom-1	Atom-2	Interatomic distance (Å)	Clash overlap (Å)
1:H:460:THR:O	1:H:461:PHE:HD1	0.83	1.15
1:C:459:TYR:CE2	1:G:513:HIS:CG	2.36	1.12
1:E:458:VAL:O	1:E:459:TYR:HD1	1.39	1.05
1:C:459:TYR:CE2	1:G:513:HIS:ND1	2.25	1.05
1:C:397:GLU:O	1:C:399:PRO:HD3	1.56	1.04
1:D:457:GLY:O	1:D:458:VAL:HG12	1.58	1.02
1:A:308:LEU:CD2	1:A:478:VAL:HG22	1.96	0.96
1:E:458:VAL:O	1:E:459:TYR:CD1	2.18	0.95
1:A:319:LEU:HB3	1:A:446:VAL:HG13	1.49	0.92
1:C:459:TYR:CD2	1:G:513:HIS:CE1	2.57	0.91
1:H:460:THR:O	1:H:460:THR:HG23	1.70	0.91
1:C:385:GLU:HG3	1:C:514:ILE:HG22	1.53	0.91
2:F:1000:OHT:H2	2:F:1000:OHT:H91	1.54	0.90
1:C:459:TYR:CZ	1:G:513:HIS:HB2	2.07	0.89
1:C:459:TYR:HD2	1:G:513:HIS:CE1	1.90	0.89
1:B:539:LEU:HD11	1:C:539:LEU:HD21	1.52	0.89
1:F:514:ILE:HA	1:F:517:MET:HE2	1.55	0.86
1:C:392:VAL:HG11	1:C:431:THR:HG22	1.56	0.85
1:B:412:ARG:HH11	1:B:412:ARG:HG2	1.38	0.85
1:E:443:GLU:CB	1:E:489:LEU:HD21	2.07	0.85
1:G:377:HIS:CD2	1:G:460:THR:C	2.50	0.84
1:C:459:TYR:CD2	1:G:513:HIS:CG	2.65	0.84
1:A:327:LEU:CB	4:A:2002:HOH:O	2.26	0.84
1:A:322:ALA:HA	1:A:363:ARG:HE	1.43	0.84
2:F:1000:OHT:H91	2:F:1000:OHT:C2	2.07	0.83
1:A:308:LEU:HD23	1:A:478:VAL:HG22	1.60	0.83
1:A:319:LEU:HB3	1:A:446:VAL:CG1	2.08	0.83
1:G:459:TYR:O	1:G:460:THR:HG22	1.79	0.82
1:B:503:ARG:HA	1:B:506:GLN:HE21	1.43	0.82
1:C:459:TYR:HE2	1:G:513:HIS:ND1	1.77	0.82
2:D:1000:OHT:C2	2:D:1000:OHT:H91	2.09	0.81
1:B:391:LEU:HD12	1:B:403:LEU:O	1.81	0.79
1:C:459:TYR:CD2	1:G:513:HIS:CD2	2.70	0.79
1:G:490:MET:HG2	1:G:495:LEU:HD22	1.66	0.78
1:E:385:GLU:HG2	1:E:514:ILE:HG22	1.66	0.78
1:F:539:LEU:O	1:F:543:MET:HB2	1.82	0.77
1:C:454:LEU:O	1:C:458:VAL:HG13	1.84	0.77
1:G:498:GLN:O	1:G:502:GLN:HB2	1.84	0.77
1:B:373:HIS:HD2	1:B:537:TYR:OH	1.68	0.76
2:H:601:OHT:H91	2:H:601:OHT:C2	2.15	0.76
1:D:540:LEU:O	1:D:544:LEU:HD12	1.86	0.76

Continued on next page...

Continued from previous page...

Atom-1	Atom-2	Interatomic distance (Å)	Clash overlap (Å)
1:D:396:MET:HE2	1:D:435:PHE:HB3	1.68	0.76
1:G:496:THR:OG1	1:G:499:GLN:HG3	1.85	0.76
1:C:464:SER:O	1:D:406:PRO:O	2.03	0.76
1:F:319:LEU:HB3	1:F:446:VAL:HG13	1.65	0.76
1:C:459:TYR:CD2	1:G:513:HIS:ND1	2.54	0.76
1:C:418:VAL:HB	1:C:421:MET:HB2	1.67	0.75
1:G:459:TYR:O	1:G:460:THR:CB	2.33	0.75
1:E:443:GLU:HB2	1:E:489:LEU:HD21	1.67	0.75
1:G:459:TYR:O	1:G:460:THR:CG2	2.35	0.75
1:A:372:LEU:HD13	1:A:541:LEU:CD1	2.16	0.75
1:E:367:PHE:CE2	1:E:375:GLN:HG2	2.21	0.75
1:H:385:GLU:HG2	1:H:514:ILE:HG22	1.69	0.75
1:H:460:THR:HG22	1:H:461:PHE:N	2.02	0.75
1:C:464:SER:O	1:C:465:THR:HG22	1.87	0.75
1:C:385:GLU:CG	1:C:514:ILE:HG22	2.18	0.74
1:B:412:ARG:HD2	1:B:426:ASP:OD1	1.87	0.74
1:B:539:LEU:CD1	1:C:539:LEU:HD21	2.18	0.74
1:B:443:GLU:O	1:B:446:VAL:HG12	1.86	0.74
1:B:542:GLU:OE1	1:C:352:ARG:NH1	2.20	0.74
1:G:384:LEU:O	1:G:388:MET:HG3	1.87	0.73
1:C:535:PRO:HB2	1:C:540:LEU:HD11	1.68	0.73
1:H:377:HIS:CE1	1:H:460:THR:HG21	2.23	0.73
1:E:514:ILE:HA	1:E:517:MET:HE2	1.69	0.73
1:G:377:HIS:CE1	1:G:460:THR:HG23	2.23	0.72
1:C:377:HIS:CE1	1:C:460:THR:OG1	2.42	0.72
2:D:1000:OHT:H91	2:D:1000:OHT:H2	1.69	0.72
2:C:1000:OHT:H103	2:C:1000:OHT:C12	2.18	0.72
1:B:539:LEU:HG	1:B:543:MET:CE	2.20	0.72
1:F:439:ASN:O	1:F:441:GLN:NE2	2.23	0.71
2:A:1000:OHT:H91	2:A:1000:OHT:C2	2.20	0.71
1:C:427:MET:HG2	1:G:459:TYR:HE1	1.55	0.71
1:C:465:THR:HG22	1:D:406:PRO:O	1.91	0.71
1:B:348:ASN:O	1:B:352:ARG:HG3	1.91	0.70
1:C:465:THR:CG2	1:D:406:PRO:O	2.39	0.70
1:C:377:HIS:NE2	1:C:460:THR:OG1	2.24	0.70
1:G:459:TYR:O	1:G:460:THR:HB	1.90	0.70
1:H:496:THR:HB	1:H:499:GLN:HG3	1.74	0.69
1:D:457:GLY:O	1:D:458:VAL:CG1	2.38	0.69
1:E:398:HIS:N	1:E:399:PRO:HD3	2.07	0.69
1:C:418:VAL:HB	1:C:421:MET:CB	2.23	0.69
1:B:370:LEU:HD21	1:B:475:ILE:HG13	1.73	0.69

Continued on next page...

Continued from previous page...

Atom-1	Atom-2	Interatomic distance (Å)	Clash overlap (Å)
1:E:385:GLU:CG	1:E:514:ILE:HG22	2.22	0.69
1:A:372:LEU:HD13	1:A:541:LEU:HD12	1.73	0.69
1:G:368:VAL:HA	1:G:375:GLN:NE2	2.07	0.68
1:A:468:SER:HB3	1:B:409:LEU:HD13	1.74	0.68
1:H:319:LEU:HB3	1:H:446:VAL:HG13	1.73	0.68
1:G:382:ALA:O	1:G:386:ILE:HG12	1.94	0.68
1:D:385:GLU:HG2	1:D:514:ILE:HG22	1.75	0.68
1:F:455:ASN:O	1:F:458:VAL:HG12	1.93	0.68
1:A:377:HIS:O	1:A:380:GLU:HB2	1.94	0.68
1:G:454:LEU:O	1:G:458:VAL:CG2	2.42	0.67
1:E:455:ASN:O	1:E:458:VAL:HG12	1.94	0.67
1:B:373:HIS:CD2	1:B:537:TYR:OH	2.46	0.67
1:E:469:LEU:C	1:E:471:GLU:H	1.98	0.67
2:G:1000:OHT:C2	2:G:1000:OHT:H91	2.24	0.66
1:G:454:LEU:O	1:G:458:VAL:HG23	1.95	0.66
1:D:513:HIS:HB2	1:H:459:TYR:CE1	2.30	0.66
1:H:351:ASP:OD1	2:H:601:OHT:H253	1.95	0.66
1:F:311:THR:N	1:F:314:GLN:OE1	2.27	0.66
1:A:438:MET:HE1	1:A:506:GLN:HG3	1.78	0.66
1:A:471:GLU:O	1:A:474:HIS:N	2.29	0.66
1:E:443:GLU:HB3	1:E:489:LEU:HD21	1.77	0.66
1:E:469:LEU:HD23	1:E:471:GLU:HB2	1.77	0.66
2:A:1000:OHT:H91	2:A:1000:OHT:H2	1.77	0.65
1:B:540:LEU:O	1:B:544:LEU:CD1	2.31	0.65
1:B:412:ARG:HG2	1:B:412:ARG:NH1	2.11	0.65
1:F:354:LEU:O	1:F:358:ILE:HD12	1.96	0.65
1:B:370:LEU:HD21	1:B:475:ILE:CG1	2.25	0.65
1:G:316:VAL:HG12	1:G:320:LEU:CD1	2.26	0.65
1:E:316:VAL:HG21	1:E:489:LEU:HD11	1.78	0.65
1:C:371:THR:HG23	1:C:471:GLU:OE2	1.96	0.65
1:H:359:ASN:ND2	3:H:602:SO4:O1	2.30	0.65
1:A:308:LEU:CD2	1:A:478:VAL:CG2	2.73	0.64
1:B:343:MET:HG3	1:B:343:MET:O	1.96	0.64
1:E:496:THR:O	1:E:500:GLN:HG3	1.97	0.64
1:D:458:VAL:HG23	1:D:472:LYS:HE2	1.80	0.64
1:H:418:VAL:HB	1:H:421:MET:HB2	1.80	0.64
1:A:539:LEU:HD21	1:D:539:LEU:HD21	1.79	0.64
1:F:310:LEU:HD12	1:F:310:LEU:O	1.97	0.64
1:A:544:LEU:O	1:A:545:ASP:HB2	1.96	0.64
1:G:330:GLU:O	1:G:331:TYR:HB3	1.96	0.64
1:C:459:TYR:CD2	1:G:513:HIS:NE2	2.65	0.63

Continued on next page...

Continued from previous page...

Atom-1	Atom-2	Interatomic distance (Å)	Clash overlap (Å)
1:H:377:HIS:NE2	1:H:460:THR:CG2	2.62	0.62
1:C:497:LEU:O	1:C:500:GLN:HB2	1.99	0.62
1:C:459:TYR:CE2	1:G:513:HIS:CB	2.81	0.62
1:E:539:LEU:HG	1:E:543:MET:CE	2.29	0.62
1:A:515:ARG:O	1:A:518:SER:HB3	1.99	0.62
1:G:495:LEU:HB3	1:G:499:GLN:HB2	1.81	0.62
1:A:383:TRP:HE1	1:A:534:VAL:HG13	1.64	0.62
1:H:496:THR:HG22	1:H:498:GLN:H	1.64	0.62
1:B:541:LEU:HD23	1:C:352:ARG:HD3	1.81	0.61
1:B:496:THR:OG1	1:B:499:GLN:HG3	1.99	0.61
1:C:459:TYR:CE2	1:G:513:HIS:HB2	2.35	0.61
1:E:514:ILE:HA	1:E:517:MET:CE	2.30	0.61
1:C:513:HIS:CD2	1:G:459:TYR:HD2	2.17	0.61
1:H:523:GLU:O	1:H:526:TYR:HB2	2.00	0.61
1:F:319:LEU:HB3	1:F:446:VAL:CG1	2.31	0.61
1:E:443:GLU:HB2	1:E:489:LEU:CD2	2.31	0.61
1:D:484:ASP:OD1	1:H:501:HIS:NE2	2.23	0.61
1:C:438:MET:CE	1:C:506:GLN:HB3	2.30	0.61
1:D:513:HIS:CG	1:H:459:TYR:CD1	2.88	0.61
1:A:367:PHE:CE2	1:A:375:GLN:HG2	2.36	0.60
1:G:459:TYR:O	1:G:459:TYR:CD1	2.53	0.60
1:H:360:TRP:CZ3	1:H:453:LEU:HD22	2.36	0.60
1:D:402:LEU:HD21	1:D:429:LEU:HG	1.84	0.60
1:G:368:VAL:HA	1:G:375:GLN:HE22	1.67	0.60
1:A:539:LEU:O	1:A:540:LEU:C	2.38	0.60
1:E:329:SER:H	1:E:407:ASN:HD21	1.50	0.59
1:H:378:LEU:HD23	1:H:457:GLY:HA3	1.83	0.59
1:B:401:LYS:HG2	1:B:411:ASP:OD1	2.03	0.59
1:G:319:LEU:HB3	1:G:446:VAL:HG13	1.83	0.59
1:H:410:LEU:HD12	1:H:410:LEU:N	2.17	0.59
1:D:514:ILE:HA	1:D:517:MET:HE2	1.85	0.59
1:D:371:THR:HG23	1:D:471:GLU:OE2	2.02	0.59
1:C:427:MET:HG2	1:G:459:TYR:CE1	2.36	0.59
2:B:601:OHT:C6	2:B:601:OHT:H91	2.33	0.59
1:C:513:HIS:CD2	1:G:459:TYR:CD2	2.91	0.58
1:B:395:SER:OG	1:B:403:LEU:N	2.35	0.58
1:D:498:GLN:O	1:D:502:GLN:HG3	2.04	0.58
1:C:358:ILE:HG21	1:C:543:MET:HB3	1.84	0.58
1:A:428:LEU:HD23	1:A:517:MET:SD	2.44	0.58
1:B:438:MET:HE2	1:B:507:LEU:HD21	1.84	0.58
1:D:312:ALA:HB1	1:D:485:THR:HG23	1.84	0.58

Continued on next page...

Continued from previous page...

Atom-1	Atom-2	Interatomic distance (Å)	Clash overlap (Å)
1:B:412:ARG:CD	1:B:426:ASP:OD1	2.50	0.58
2:C:1000:OHT:C2	2:C:1000:OHT:H91	2.34	0.58
1:B:307:ALA:HA	1:B:310:LEU:HD13	1.86	0.58
1:B:391:LEU:CD1	1:B:403:LEU:O	2.50	0.57
1:H:363:ARG:NH2	3:H:602:SO4:O4	2.36	0.57
1:F:478:VAL:O	1:F:481:LYS:HB3	2.05	0.57
1:D:372:LEU:HD13	1:D:541:LEU:CD2	2.35	0.57
1:G:522:MET:O	1:G:526:TYR:HB3	2.05	0.57
1:A:372:LEU:HD13	1:A:541:LEU:HD11	1.85	0.57
1:B:438:MET:CE	1:B:507:LEU:CD2	2.82	0.57
1:F:382:ALA:HB2	1:F:456:SER:HB2	1.86	0.57
1:G:376:VAL:HG11	1:G:537:TYR:CD1	2.40	0.57
1:A:542:GLU:OE1	1:A:542:GLU:HA	2.04	0.57
1:D:372:LEU:HD13	1:D:541:LEU:HD23	1.87	0.56
1:D:418:VAL:HG21	1:D:421:MET:HE1	1.87	0.56
1:B:443:GLU:HB3	1:B:489:LEU:CD1	2.35	0.56
1:D:438:MET:HE1	1:D:506:GLN:HB3	1.87	0.56
1:G:377:HIS:NE2	1:G:460:THR:C	2.59	0.56
1:H:495:LEU:HB3	1:H:499:GLN:HB2	1.86	0.56
1:D:389:ILE:HD12	1:D:514:ILE:HD13	1.87	0.56
1:E:311:THR:HG23	1:E:314:GLN:OE1	2.05	0.56
1:E:519:ASN:O	1:E:523:GLU:HG3	2.04	0.56
1:C:513:HIS:HE1	1:G:455:ASN:O	1.89	0.56
2:C:1000:OHT:H2	2:C:1000:OHT:H91	1.87	0.56
1:B:370:LEU:CD2	1:B:475:ILE:HD11	2.36	0.56
1:H:445:PHE:CZ	1:H:449:LYS:HD2	2.41	0.56
1:C:459:TYR:OH	1:G:513:HIS:HB2	2.06	0.56
2:G:1000:OHT:C17	2:G:1000:OHT:C16	2.84	0.56
1:B:438:MET:CE	1:B:507:LEU:HD21	2.36	0.56
1:H:439:ASN:O	1:H:441:GLN:NE2	2.39	0.56
1:C:310:LEU:O	1:C:481:LYS:NZ	2.38	0.56
1:B:394:ARG:HD2	1:B:403:LEU:HD22	1.88	0.56
1:C:438:MET:HE1	1:C:506:GLN:HB3	1.88	0.55
1:H:403:LEU:HD22	1:H:409:LEU:HG	1.87	0.55
1:G:395:SER:OG	1:G:402:LEU:HA	2.07	0.55
1:D:348:ASN:O	1:D:352:ARG:HG3	2.06	0.55
1:A:459:TYR:CE1	1:F:513:HIS:CD2	2.95	0.55
1:H:385:GLU:CG	1:H:514:ILE:HG22	2.35	0.55
1:H:360:TRP:HH2	1:H:453:LEU:HB2	1.71	0.55
1:A:533:VAL:HG13	1:A:534:VAL:H	1.70	0.55
1:C:401:LYS:HD2	1:C:409:LEU:HD21	1.89	0.55

Continued on next page...

Continued from previous page...

Atom-1	Atom-2	Interatomic distance (Å)	Clash overlap (Å)
2:F:1000:OHT:C9	2:F:1000:OHT:C2	2.81	0.54
1:A:459:TYR:HE1	1:F:513:HIS:CD2	2.25	0.54
1:H:539:LEU:HD23	1:H:543:MET:CE	2.38	0.54
1:F:405:ALA:HB1	1:F:406:PRO:HD2	1.88	0.54
1:H:377:HIS:NE2	1:H:460:THR:HG21	2.22	0.54
1:B:412:ARG:NE	1:B:426:ASP:OD1	2.40	0.54
1:B:448:LEU:HD21	1:B:507:LEU:HB3	1.88	0.54
1:G:434:ARG:HG2	1:G:510:ILE:HD11	1.90	0.54
1:D:513:HIS:ND1	1:H:459:TYR:HD1	2.06	0.54
1:C:435:PHE:CD1	1:C:440:LEU:HD22	2.43	0.54
1:D:328:TYR:O	1:D:352:ARG:NH2	2.41	0.54
1:C:379:LEU:HD12	1:C:544:LEU:HD11	1.90	0.54
1:C:428:LEU:HD23	1:C:517:MET:HE1	1.90	0.54
1:D:382:ALA:HB2	1:D:456:SER:HB3	1.90	0.54
1:A:541:LEU:HD23	1:D:352:ARG:HD3	1.90	0.54
2:B:601:OHT:H91	2:B:601:OHT:H6	1.89	0.54
1:A:487:ILE:HA	1:A:490:MET:CE	2.37	0.54
1:A:496:THR:OG1	1:A:499:GLN:HG3	2.08	0.53
1:B:412:ARG:HH11	1:B:412:ARG:CG	2.14	0.53
1:C:465:THR:CG2	1:D:406:PRO:HA	2.38	0.53
1:D:497:LEU:HD21	1:H:497:LEU:HD22	1.90	0.53
1:A:534:VAL:O	1:A:536:LEU:HD22	2.07	0.53
1:A:471:GLU:O	1:A:472:LYS:C	2.46	0.53
1:D:419:GLU:O	1:D:524:HIS:NE2	2.42	0.53
1:B:438:MET:HE2	1:B:507:LEU:CD2	2.39	0.53
1:B:412:ARG:HE	1:B:426:ASP:CG	2.12	0.53
1:B:507:LEU:O	1:B:510:ILE:HB	2.09	0.53
1:C:465:THR:HG21	1:D:406:PRO:HA	1.91	0.53
1:G:316:VAL:HG12	1:G:320:LEU:HD11	1.91	0.53
1:B:412:ARG:NH1	1:B:412:ARG:CG	2.72	0.52
1:A:354:LEU:HD21	1:A:535:PRO:HG3	1.91	0.52
1:C:454:LEU:O	1:C:458:VAL:CG1	2.56	0.52
1:H:539:LEU:HD23	1:H:543:MET:HE3	1.92	0.52
1:E:319:LEU:HB3	1:E:446:VAL:CG1	2.39	0.52
1:E:418:VAL:HG21	1:E:421:MET:CE	2.38	0.52
1:H:392:VAL:HG11	1:H:431:THR:HG22	1.91	0.52
1:D:513:HIS:HB2	1:H:459:TYR:CD1	2.44	0.52
1:C:442:GLY:O	1:C:445:PHE:HB3	2.10	0.52
1:F:359:ASN:O	1:F:363:ARG:HG3	2.10	0.52
1:B:443:GLU:HB3	1:B:489:LEU:HD13	1.91	0.52
1:C:540:LEU:O	1:C:544:LEU:HB2	2.09	0.52

Continued on next page...

Continued from previous page...

Atom-1	Atom-2	Interatomic distance (Å)	Clash overlap (Å)
1:B:452:ILE:HD11	1:B:511:LEU:HD22	1.91	0.52
1:C:525:LEU:HD13	2:C:1000:OHT:C15	2.40	0.52
1:H:514:ILE:HG12	1:H:517:MET:HE1	1.91	0.52
1:H:418:VAL:O	1:H:420:GLY:N	2.42	0.52
1:A:375:GLN:HB3	1:A:544:LEU:HD13	1.92	0.52
1:C:403:LEU:HD23	1:C:409:LEU:HD13	1.92	0.52
2:D:1000:OHT:C9	2:D:1000:OHT:H2	2.40	0.52
1:A:434:ARG:NH2	1:A:506:GLN:HB2	2.25	0.52
1:D:342:MET:C	1:D:344:GLY:N	2.61	0.51
2:E:1000:OHT:H103	2:E:1000:OHT:C12	2.39	0.51
1:C:372:LEU:HD13	1:C:541:LEU:HD11	1.92	0.51
1:B:370:LEU:HD21	1:B:475:ILE:CD1	2.41	0.51
1:E:536:LEU:O	1:E:540:LEU:HG	2.10	0.51
1:H:496:THR:CB	1:H:499:GLN:HG3	2.40	0.51
1:A:308:LEU:HD21	1:A:478:VAL:HG22	1.90	0.51
1:H:496:THR:HB	1:H:499:GLN:H	1.75	0.51
1:E:306:LEU:O	1:E:309:SER:O	2.28	0.51
1:D:516:HIS:HB2	1:H:515:ARG:HH11	1.76	0.51
1:A:422:VAL:O	1:A:425:PHE:HB2	2.11	0.51
1:E:312:ALA:O	1:E:316:VAL:HG23	2.11	0.51
1:C:458:VAL:CG1	1:C:475:ILE:HG21	2.41	0.51
1:A:311:THR:OG1	1:A:314:GLN:HG3	2.10	0.51
1:B:498:GLN:HA	1:B:501:HIS:CE1	2.45	0.50
1:E:427:MET:HB3	1:E:517:MET:HG2	1.91	0.50
1:C:464:SER:O	1:C:465:THR:CG2	2.58	0.50
1:D:427:MET:HB3	1:D:517:MET:SD	2.52	0.50
1:H:349:LEU:CD2	1:H:404:PHE:HB3	2.40	0.50
1:B:370:LEU:HD21	1:B:475:ILE:HD11	1.93	0.50
1:H:358:ILE:HG23	1:H:544:LEU:HD23	1.93	0.50
1:C:428:LEU:HD23	1:C:517:MET:CE	2.41	0.50
1:F:430:ALA:O	1:F:433:SER:HB2	2.12	0.50
1:C:495:LEU:H	1:C:495:LEU:HD12	1.77	0.50
2:A:1000:OHT:C12	2:A:1000:OHT:H103	2.42	0.50
2:G:1000:OHT:C22	2:G:1000:OHT:C11	2.89	0.50
1:C:418:VAL:HG12	1:C:418:VAL:O	2.12	0.50
2:G:1000:OHT:H2	2:G:1000:OHT:H91	1.94	0.50
1:B:516:HIS:HB2	1:E:515:ARG:HD3	1.93	0.50
1:H:487:ILE:HG22	1:H:488:HIS:N	2.27	0.50
1:H:396:MET:HA	1:H:432:SER:OG	2.13	0.49
1:D:525:LEU:HD11	2:D:1000:OHT:C21	2.42	0.49
1:D:393:TRP:CE3	1:D:396:MET:HE3	2.47	0.49

Continued on next page...

Continued from previous page...

Atom-1	Atom-2	Interatomic distance (Å)	Clash overlap (Å)
1:D:513:HIS:ND1	1:H:459:TYR:CD1	2.80	0.49
1:D:421:MET:HE2	2:D:1000:OHT:H12	1.93	0.49
1:G:470:GLU:H	1:G:470:GLU:CD	2.15	0.49
1:H:354:LEU:HD11	1:H:535:PRO:HG3	1.95	0.49
1:C:348:ASN:O	1:C:352:ARG:HG3	2.13	0.49
1:H:490:MET:HB3	1:H:495:LEU:HD22	1.95	0.49
1:G:496:THR:HG23	1:G:499:GLN:OE1	2.13	0.49
1:A:544:LEU:O	1:A:545:ASP:CB	2.61	0.49
1:A:383:TRP:CE2	1:A:535:PRO:HD2	2.46	0.49
1:C:495:LEU:HD12	1:C:495:LEU:N	2.28	0.49
1:C:535:PRO:HB2	1:C:540:LEU:CD1	2.40	0.49
1:C:468:SER:O	1:C:471:GLU:HB2	2.13	0.49
1:F:328:TYR:O	1:F:352:ARG:NH2	2.46	0.48
1:C:348:ASN:HD22	1:C:348:ASN:N	2.11	0.48
1:D:396:MET:HE2	1:D:435:PHE:CB	2.42	0.48
1:H:319:LEU:HB3	1:H:446:VAL:CG1	2.43	0.48
1:E:390:GLY:O	1:E:394:ARG:HG2	2.13	0.48
1:C:465:THR:HG23	1:D:406:PRO:O	2.12	0.48
1:F:310:LEU:HD12	1:F:310:LEU:C	2.34	0.48
1:B:438:MET:HE1	1:B:507:LEU:CD2	2.44	0.48
1:E:376:VAL:HG11	1:E:537:TYR:CE1	2.48	0.48
1:E:514:ILE:HG12	1:E:517:MET:HE1	1.96	0.48
2:C:1000:OHT:C10	2:C:1000:OHT:C12	2.87	0.48
1:B:438:MET:CE	1:B:507:LEU:HD23	2.43	0.48
1:A:403:LEU:HD23	1:A:403:LEU:O	2.13	0.48
1:A:379:LEU:HD12	1:A:544:LEU:HD11	1.95	0.48
1:G:509:LEU:HD23	1:G:509:LEU:HA	1.59	0.48
1:H:392:VAL:HG11	1:H:431:THR:CG2	2.44	0.48
1:D:490:MET:HB3	1:D:500:GLN:HG2	1.95	0.48
1:B:352:ARG:CD	1:C:541:LEU:HD23	2.44	0.47
1:B:352:ARG:HD3	1:C:541:LEU:HD23	1.95	0.47
1:D:349:LEU:HD21	1:D:404:PHE:O	2.14	0.47
1:C:392:VAL:HG11	1:C:431:THR:CG2	2.38	0.47
1:C:468:SER:HA	1:C:471:GLU:HG3	1.96	0.47
1:C:438:MET:HE3	1:C:506:GLN:HB3	1.97	0.47
1:G:315:MET:O	1:G:319:LEU:HG	2.13	0.47
1:A:427:MET:HB3	1:A:517:MET:HG2	1.95	0.47
1:B:329:SER:H	1:B:407:ASN:HD21	1.62	0.47
1:B:358:ILE:HD11	1:B:540:LEU:HD22	1.95	0.47
2:G:1000:OHT:C22	2:G:1000:OHT:C16	2.92	0.47
1:A:423:GLU:CD	1:A:423:GLU:H	2.18	0.47

Continued on next page...

Continued from previous page...

Atom-1	Atom-2	Interatomic distance (Å)	Clash overlap (Å)
1:G:319:LEU:CB	1:G:446:VAL:HG13	2.45	0.47
1:A:312:ALA:O	1:A:316:VAL:HG23	2.14	0.47
1:D:396:MET:CE	1:D:435:PHE:HB3	2.41	0.47
1:D:389:ILE:HD12	1:D:514:ILE:CD1	2.44	0.47
1:E:440:LEU:HD13	1:E:507:LEU:HD21	1.97	0.47
1:C:398:HIS:N	1:C:398:HIS:CD2	2.82	0.47
1:D:458:VAL:CG2	1:D:472:LYS:HE2	2.43	0.47
1:A:390:GLY:O	1:A:393:TRP:HB3	2.14	0.47
1:F:492:LYS:HA	1:F:492:LYS:HD3	1.56	0.47
1:B:413:ASN:O	1:B:416:LYS:HG3	2.15	0.47
1:C:495:LEU:H	1:C:495:LEU:CD1	2.28	0.47
1:A:447:CYS:O	1:A:451:ILE:HG13	2.15	0.47
1:H:448:LEU:HD22	1:H:511:LEU:HD21	1.97	0.46
1:G:542:GLU:HA	1:G:542:GLU:OE1	2.15	0.46
1:E:457:GLY:O	1:E:458:VAL:C	2.52	0.46
1:H:514:ILE:HA	1:H:517:MET:HE2	1.97	0.46
1:E:398:HIS:N	1:E:399:PRO:CD	2.68	0.46
1:H:403:LEU:CD2	1:H:409:LEU:HD21	2.46	0.46
1:A:308:LEU:HD21	1:A:478:VAL:CG2	2.45	0.46
1:H:351:ASP:OD1	2:H:601:OHT:H241	2.14	0.46
1:A:513:HIS:HE1	1:F:455:ASN:O	1.98	0.46
1:E:504:LEU:O	1:E:508:LEU:HG	2.15	0.46
1:E:392:VAL:HG23	1:E:428:LEU:CD2	2.46	0.46
1:H:481:LYS:HA	1:H:481:LYS:HD2	1.70	0.46
1:C:358:ILE:HD11	1:C:540:LEU:HG	1.97	0.46
1:A:383:TRP:CZ3	1:A:384:LEU:HD13	2.51	0.46
1:H:383:TRP:CZ3	1:H:387:LEU:HD12	2.51	0.46
1:C:408:LEU:CD2	1:C:410:LEU:HG	2.46	0.46
1:G:455:ASN:HA	1:G:458:VAL:CG2	2.46	0.46
1:G:316:VAL:HG12	1:G:320:LEU:HD12	1.95	0.46
1:E:458:VAL:O	1:E:459:TYR:CB	2.63	0.45
1:B:376:VAL:HG11	1:B:537:TYR:CD1	2.51	0.45
1:C:421:MET:HG3	2:C:1000:OHT:H13	1.98	0.45
1:E:418:VAL:O	1:E:420:GLY:N	2.49	0.45
1:D:329:SER:H	1:D:407:ASN:HD21	1.65	0.45
1:C:310:LEU:HD22	1:C:314:GLN:HB3	1.99	0.45
2:E:1000:OHT:C12	2:E:1000:OHT:C10	2.95	0.45
1:C:362:LYS:O	1:C:368:VAL:CG1	2.64	0.45
1:A:508:LEU:CD1	1:F:505:ALA:HA	2.47	0.45
1:A:452:ILE:HD11	1:A:511:LEU:HD22	1.97	0.45
1:H:383:TRP:HZ3	1:H:387:LEU:HD12	1.82	0.45

Continued on next page...

Continued from previous page...

Atom-1	Atom-2	Interatomic distance (Å)	Clash overlap (Å)
1:C:463:SER:O	1:C:463:SER:OG	2.28	0.45
1:B:455:ASN:CG	1:B:455:ASN:O	2.55	0.45
1:D:367:PHE:CE2	1:D:375:GLN:HG2	2.51	0.45
1:D:385:GLU:CG	1:D:514:ILE:HG22	2.44	0.45
1:C:458:VAL:HG12	1:C:475:ILE:HG21	1.98	0.45
1:H:360:TRP:HA	1:H:363:ARG:HD2	1.99	0.45
1:G:360:TRP:O	1:G:361:ALA:C	2.55	0.45
1:D:310:LEU:HD12	1:D:315:MET:HE2	1.98	0.45
1:H:368:VAL:HA	1:H:375:GLN:NE2	2.32	0.45
1:D:433:SER:O	1:D:436:ARG:N	2.49	0.45
1:G:486:LEU:HD23	1:G:486:LEU:HA	1.73	0.45
1:E:358:ILE:HD12	1:E:543:MET:SD	2.57	0.45
1:E:469:LEU:C	1:E:471:GLU:N	2.65	0.45
1:B:490:MET:HB3	1:B:495:LEU:HD22	1.97	0.45
1:D:401:LYS:HB2	1:D:409:LEU:HD23	1.99	0.45
1:G:444:GLU:CD	1:G:503:ARG:HH21	2.19	0.45
1:H:358:ILE:HD13	1:H:543:MET:SD	2.57	0.45
1:E:524:HIS:HA	1:E:527:SER:HB2	1.98	0.45
1:G:346:LEU:HA	1:G:346:LEU:HD23	1.79	0.45
1:G:448:LEU:HA	1:G:448:LEU:HD23	1.79	0.45
1:A:490:MET:HB3	1:A:495:LEU:HD22	1.99	0.44
1:D:419:GLU:O	1:D:524:HIS:CD2	2.70	0.44
1:E:407:ASN:H	1:E:407:ASN:ND2	2.16	0.44
1:C:403:LEU:HD23	1:C:409:LEU:CD1	2.47	0.44
1:G:495:LEU:N	1:G:495:LEU:HD12	2.31	0.44
1:E:317:SER:O	1:E:318:ALA:C	2.55	0.44
1:A:492:LYS:HB2	1:A:492:LYS:HE3	1.80	0.44
1:F:342:MET:O	1:F:345:LEU:HB3	2.18	0.44
2:H:601:OHT:H263	2:H:601:OHT:O20	2.17	0.44
1:E:539:LEU:HG	1:E:543:MET:HE1	1.99	0.44
1:E:329:SER:N	1:E:407:ASN:HD21	2.13	0.44
1:A:398:HIS:O	1:A:399:PRO:C	2.55	0.44
1:F:339:GLU:HG3	1:F:341:SER:OG	2.18	0.44
1:A:403:LEU:HD12	1:A:409:LEU:HD11	2.00	0.44
1:F:347:THR:O	1:F:350:ALA:HB3	2.17	0.44
1:E:374:ASP:O	1:E:378:LEU:HG	2.18	0.44
1:A:435:PHE:HE1	1:A:510:ILE:HD13	1.82	0.44
1:D:396:MET:O	1:D:396:MET:HG2	2.17	0.44
1:B:343:MET:HE3	1:B:528:MET:HE2	2.00	0.44
1:A:487:ILE:HA	1:A:490:MET:HE3	1.99	0.44
1:B:388:MET:O	1:B:389:ILE:C	2.54	0.44

Continued on next page...

Continued from previous page...

Atom-1	Atom-2	Interatomic distance (Å)	Clash overlap (Å)
1:A:435:PHE:CE1	1:A:510:ILE:HD13	2.52	0.44
1:F:322:ALA:HB1	1:F:363:ARG:HB2	1.99	0.43
1:G:354:LEU:HD21	1:G:535:PRO:HD3	1.98	0.43
1:H:390:GLY:O	1:H:394:ARG:HG2	2.18	0.43
1:H:408:LEU:HD11	1:H:410:LEU:HD11	2.00	0.43
1:C:411:ASP:C	1:C:411:ASP:OD1	2.56	0.43
1:G:478:VAL:O	1:G:482:ILE:HG13	2.17	0.43
1:A:435:PHE:CE1	1:A:510:ILE:HG21	2.53	0.43
1:G:385:GLU:HG3	1:G:518[A]:SER:OG	2.19	0.43
1:G:454:LEU:O	1:G:458:VAL:HG22	2.17	0.43
1:D:513:HIS:CE1	1:H:459:TYR:HB2	2.53	0.43
1:G:469:LEU:HA	1:G:469:LEU:HD12	1.88	0.43
1:B:328:TYR:O	1:B:352:ARG:NH2	2.51	0.43
1:H:539:LEU:O	1:H:543:MET:HB2	2.19	0.43
1:A:490:MET:SD	1:A:503:ARG:HB3	2.58	0.43
1:E:385:GLU:HG2	1:E:514:ILE:CG2	2.43	0.43
1:B:327:LEU:HD22	1:B:352:ARG:NH1	2.34	0.43
1:H:403:LEU:HD23	1:H:409:LEU:HD21	2.00	0.43
1:A:403:LEU:HD12	1:A:409:LEU:CD1	2.48	0.43
1:C:373:HIS:CE1	1:C:537:TYR:OH	2.71	0.43
1:F:376:VAL:HG22	1:F:544:LEU:HD12	2.00	0.43
1:A:471:GLU:HG2	1:A:471:GLU:H	1.69	0.43
1:A:352:ARG:HD2	1:D:541:LEU:HD13	2.00	0.43
1:C:481:LYS:HD2	1:C:481:LYS:HA	1.79	0.43
1:F:498:GLN:O	1:F:502:GLN:HG3	2.19	0.43
1:C:378:LEU:HD23	1:C:378:LEU:HA	1.87	0.43
1:C:376:VAL:HG21	1:C:541:LEU:HA	2.01	0.43
1:G:403:LEU:HD12	1:G:409:LEU:HD13	2.01	0.43
1:A:459:TYR:CD1	1:A:459:TYR:N	2.86	0.43
1:G:356:HIS:O	1:G:359:ASN:HB2	2.19	0.43
1:B:366:GLY:HA2	1:B:369:ASP:OD2	2.19	0.43
1:A:312:ALA:HB1	1:A:485:THR:HA	2.01	0.43
1:E:318:ALA:O	1:E:321:ASP:HB2	2.19	0.42
1:B:435:PHE:CE1	1:B:510:ILE:HG21	2.54	0.42
1:E:376:VAL:HG11	1:E:537:TYR:CD1	2.54	0.42
1:C:398:HIS:H	1:C:398:HIS:CD2	2.37	0.42
1:F:342:MET:CE	1:F:417:CYS:SG	3.07	0.42
1:E:407:ASN:H	1:E:407:ASN:HD22	1.67	0.42
1:F:371:THR:HG23	1:F:471:GLU:OE2	2.18	0.42
1:G:377:HIS:HD2	1:G:457:GLY:O	2.02	0.42
1:A:438:MET:HE3	1:A:506:GLN:HE21	1.84	0.42

Continued on next page...

Continued from previous page...

Atom-1	Atom-2	Interatomic distance (Å)	Clash overlap (Å)
1:G:452:ILE:HD11	1:G:511:LEU:HD22	2.01	0.42
1:H:486:LEU:HD23	1:H:486:LEU:HA	1.78	0.42
1:A:478:VAL:O	1:A:482:ILE:HG13	2.19	0.42
1:B:327:LEU:O	1:B:405:ALA:HB1	2.19	0.42
1:H:410:LEU:CD1	1:H:410:LEU:N	2.81	0.42
1:E:418:VAL:HG21	1:E:421:MET:HE1	2.01	0.42
1:E:452:ILE:O	1:E:453:LEU:C	2.57	0.42
1:B:544:LEU:O	1:B:545:ASP:HB2	2.20	0.42
1:E:367:PHE:CZ	1:E:375:GLN:HG2	2.54	0.42
1:B:443:GLU:HB3	1:B:489:LEU:HD11	2.01	0.42
1:G:535:PRO:HB2	1:G:536:LEU:H	1.72	0.42
1:D:368:VAL:HG23	1:D:368:VAL:H	1.57	0.42
1:A:342:MET:CE	1:A:344:GLY:H	2.32	0.42
1:G:459:TYR:C	1:G:460:THR:HG22	2.38	0.42
1:C:465:THR:CG2	1:D:406:PRO:CA	2.97	0.42
1:H:360:TRP:CH2	1:H:453:LEU:HD22	2.54	0.42
1:E:393:TRP:HB2	1:E:445:PHE:CE1	2.55	0.42
1:H:545:ASP:O	1:H:546:ALA:C	2.58	0.42
1:A:520:LYS:HD3	1:A:520:LYS:HA	1.82	0.42
1:G:345:LEU:HD11	1:G:408:LEU:HD22	2.02	0.42
1:C:362:LYS:O	1:C:368:VAL:HG11	2.19	0.42
1:B:342:MET:O	1:B:342:MET:SD	2.78	0.42
1:B:497:LEU:HD21	1:E:497:LEU:HD13	2.02	0.42
1:C:513:HIS:CG	1:G:459:TYR:CE2	3.08	0.42
1:F:319:LEU:CB	1:F:446:VAL:CG1	2.98	0.42
2:A:1000:OHT:C2	2:A:1000:OHT:C9	2.92	0.42
1:D:374:ASP:OD2	1:D:471:GLU:OE2	2.38	0.42
1:D:540:LEU:N	1:D:540:LEU:HD12	2.35	0.41
1:H:501:HIS:CD2	1:H:502:GLN:N	2.88	0.41
1:H:377:HIS:NE2	1:H:460:THR:HG22	2.35	0.41
1:B:513:HIS:HE1	1:E:455:ASN:O	2.04	0.41
1:E:319:LEU:HB3	1:E:446:VAL:HG13	2.02	0.41
1:D:342:MET:C	1:D:344:GLY:H	2.22	0.41
1:F:469:LEU:C	1:F:471:GLU:H	2.24	0.41
1:A:405:ALA:O	1:A:406:PRO:C	2.57	0.41
1:B:352:ARG:NH1	1:C:542:GLU:OE1	2.43	0.41
1:H:360:TRP:CH2	1:H:453:LEU:HB2	2.54	0.41
1:E:388:MET:HG2	1:E:428:LEU:HD21	2.01	0.41
1:A:542:GLU:OE1	1:A:542:GLU:CA	2.67	0.41
1:G:402:LEU:HD21	1:G:429:LEU:HG	2.02	0.41
1:C:354:LEU:HD11	1:C:383:TRP:CE3	2.55	0.41

Continued on next page...

Continued from previous page...

Atom-1	Atom-2	Interatomic distance (Å)	Clash overlap (Å)
1:G:402:LEU:O	1:G:409:LEU:HD12	2.20	0.41
2:E:1000:OHT:H91	2:E:1000:OHT:H2	2.03	0.41
1:C:411:ASP:OD1	1:C:412:ARG:N	2.53	0.41
1:F:390:GLY:O	1:F:394:ARG:HG2	2.21	0.41
1:E:342:MET:HB3	1:E:342:MET:HE2	1.93	0.41
1:A:308:LEU:O	1:A:481:LYS:HD3	2.21	0.41
1:H:393:TRP:O	1:H:396:MET:HB2	2.20	0.41
1:G:418:VAL:HG21	1:G:421:MET:HE1	2.03	0.41
1:E:447:CYS:O	1:E:451:ILE:HG13	2.21	0.41
1:A:311:THR:O	1:A:314:GLN:N	2.54	0.41
1:G:385:GLU:HB3	1:G:452:ILE:HG21	2.02	0.41
1:C:327:LEU:HD12	1:C:353:GLU:HG2	2.02	0.41
1:C:328:TYR:CZ	1:C:406:PRO:HG2	2.54	0.41
2:F:1000:OHT:H231	2:F:1000:OHT:H253	1.82	0.41
1:A:438:MET:CE	1:A:506:GLN:HG3	2.48	0.41
1:G:376:VAL:HG11	1:G:537:TYR:CE1	2.56	0.41
1:C:448:LEU:HD11	1:C:507:LEU:HD13	2.01	0.41
1:H:348:ASN:O	1:H:352:ARG:HG3	2.21	0.41
1:D:384:LEU:HD23	1:D:522:MET:HG2	2.02	0.41
1:F:434:ARG:HG2	1:F:510:ILE:HD11	2.03	0.41
1:C:513:HIS:O	1:C:516:HIS:HB3	2.21	0.41
1:D:386:ILE:HA	1:D:389:ILE:HG22	2.02	0.41
1:B:415:GLY:O	1:B:416:LYS:C	2.59	0.41
1:D:329:SER:OG	1:D:330:GLU:N	2.54	0.41
1:F:347:THR:HG22	1:F:351:ASP:OD2	2.20	0.41
1:C:486:LEU:HA	1:C:486:LEU:HD23	1.83	0.41
1:B:393:TRP:CE3	1:B:396:MET:HE3	2.55	0.41
1:B:486:LEU:O	1:B:490:MET:HG3	2.21	0.41
1:A:327:LEU:O	1:A:405:ALA:HB1	2.20	0.40
1:C:418:VAL:CB	1:C:421:MET:HB2	2.46	0.40
1:F:434:ARG:HG2	1:F:510:ILE:CD1	2.51	0.40
1:H:479:LEU:HA	1:H:479:LEU:HD23	1.87	0.40
1:A:505:ALA:HA	1:F:508:LEU:CD1	2.51	0.40
1:B:539:LEU:CG	1:B:543:MET:CE	2.97	0.40
1:C:430:ALA:O	1:C:433:SER:HB3	2.21	0.40
1:E:411:ASP:OD1	1:E:411:ASP:N	2.55	0.40
1:D:540:LEU:H	1:D:540:LEU:HD12	1.86	0.40
1:C:351:ASP:OD1	2:C:1000:OHT:N24	2.54	0.40
1:H:418:VAL:C	1:H:420:GLY:N	2.75	0.40
1:G:319:LEU:HB2	1:G:446:VAL:CG1	2.52	0.40
1:G:373:HIS:CD2	1:G:537:TYR:OH	2.74	0.40

Continued on next page...

Continued from previous page...

Atom-1	Atom-2	Interatomic distance (Å)	Clash overlap (Å)
1:D:382:ALA:HB2	1:D:456:SER:CB	2.52	0.40
1:F:377:HIS:NE2	1:F:460:THR:HG23	2.36	0.40
1:G:397:GLU:C	1:G:399:PRO:HD3	2.42	0.40
1:F:326:ILE:H	1:F:326:ILE:HD12	1.85	0.40
1:G:423:GLU:N	1:G:423:GLU:OE1	2.48	0.40
1:E:457:GLY:O	1:E:460:THR:OG1	2.38	0.40
1:C:350:ALA:O	1:C:351:ASP:C	2.59	0.40
1:B:343:MET:CE	1:B:528:MET:CE	2.99	0.40
1:B:496:THR:O	1:B:500:GLN:HG3	2.21	0.40
1:G:482:ILE:O	1:G:483:THR:C	2.60	0.40
1:C:520:LYS:HD3	1:C:520:LYS:HA	1.42	0.40

There are no symmetry-related clashes.

5.3 Torsion angles [i](#)

5.3.1 Protein backbone [i](#)

In the following table, the Percentiles column shows the percent Ramachandran outliers of the chain as a percentile score with respect to all X-ray entries followed by that with respect to entries of similar resolution.

The Analysed column shows the number of residues for which the backbone conformation was analysed, and the total number of residues.

Mol	Chain	Analysed	Favoured	Allowed	Outliers	Percentiles	
1	A	198/260 (76%)	187 (94%)	11 (6%)	0	100	100
1	B	200/260 (77%)	184 (92%)	16 (8%)	0	100	100
1	C	208/260 (80%)	195 (94%)	13 (6%)	0	100	100
1	D	208/260 (80%)	196 (94%)	11 (5%)	1 (0%)	34	72
1	E	209/260 (80%)	193 (92%)	15 (7%)	1 (0%)	34	72
1	F	211/260 (81%)	194 (92%)	16 (8%)	1 (0%)	34	72
1	G	215/260 (83%)	198 (92%)	17 (8%)	0	100	100
1	H	214/260 (82%)	205 (96%)	8 (4%)	1 (0%)	34	72
All	All	1663/2080 (80%)	1552 (93%)	107 (6%)	4 (0%)	52	84

All (4) Ramachandran outliers are listed below:

Mol	Chain	Res	Type
1	H	419	GLU
1	F	340	ALA
1	D	416	LYS
1	E	399	PRO

5.3.2 Protein sidechains ⓘ

In the following table, the Percentiles column shows the percent sidechain outliers of the chain as a percentile score with respect to all X-ray entries followed by that with respect to entries of similar resolution.

The Analysed column shows the number of residues for which the sidechain conformation was analysed, and the total number of residues.

Mol	Chain	Analysed	Rotameric	Outliers	Percentiles	
1	A	187/233 (80%)	162 (87%)	25 (13%)	5	20
1	B	187/233 (80%)	171 (91%)	16 (9%)	13	45
1	C	197/233 (84%)	184 (93%)	13 (7%)	21	56
1	D	192/233 (82%)	171 (89%)	21 (11%)	8	31
1	E	195/233 (84%)	179 (92%)	16 (8%)	14	47
1	F	197/233 (84%)	183 (93%)	14 (7%)	18	54
1	G	198/233 (85%)	185 (93%)	13 (7%)	21	56
1	H	197/233 (84%)	179 (91%)	18 (9%)	12	40
All	All	1550/1864 (83%)	1414 (91%)	136 (9%)	13	44

All (136) residues with a non-rotameric sidechain are listed below:

Mol	Chain	Res	Type
1	A	308	LEU
1	A	313	ASP
1	A	326	ILE
1	A	354	LEU
1	A	368	VAL
1	A	379	LEU
1	A	381	CYS
1	A	385	GLU
1	A	394	ARG
1	A	409	LEU
1	A	412	ARG
1	A	422	VAL

Continued on next page...

Continued from previous page...

Mol	Chain	Res	Type
1	A	423	GLU
1	A	424	ILE
1	A	431	THR
1	A	437	MET
1	A	468	SER
1	A	471	GLU
1	A	481	LYS
1	A	497	LEU
1	A	512	SER
1	A	524	HIS
1	A	539	LEU
1	A	540	LEU
1	A	545	ASP
1	B	309	SER
1	B	316	VAL
1	B	321	ASP
1	B	326	ILE
1	B	342	MET
1	B	343	MET
1	B	354	LEU
1	B	358	ILE
1	B	368	VAL
1	B	372	LEU
1	B	389	ILE
1	B	413	ASN
1	B	416	LYS
1	B	417	CYS
1	B	469	LEU
1	B	545	ASP
1	C	330	GLU
1	C	354	LEU
1	C	408	LEU
1	C	409	LEU
1	C	411	ASP
1	C	416	LYS
1	C	422	VAL
1	C	437	MET
1	C	459	TYR
1	C	464	SER
1	C	472	LYS
1	C	512	SER
1	C	527	SER

Continued on next page...

Continued from previous page...

Mol	Chain	Res	Type
1	D	321	ASP
1	D	326	ILE
1	D	342	MET
1	D	345	LEU
1	D	354	LEU
1	D	358	ILE
1	D	373	HIS
1	D	397	GLU
1	D	411	ASP
1	D	412	ARG
1	D	413	ASN
1	D	422	VAL
1	D	432	SER
1	D	433	SER
1	D	446	VAL
1	D	492	LYS
1	D	512	SER
1	D	517	MET
1	D	525	LEU
1	D	536	LEU
1	D	541	LEU
1	E	308	LEU
1	E	313	ASP
1	E	326	ILE
1	E	348	ASN
1	E	354	LEU
1	E	362	LYS
1	E	381	CYS
1	E	418	VAL
1	E	432	SER
1	E	434	ARG
1	E	459	TYR
1	E	469	LEU
1	E	470	GLU
1	E	487	ILE
1	E	527	SER
1	E	540	LEU
1	F	308	LEU
1	F	326	ILE
1	F	339	GLU
1	F	354	LEU
1	F	358	ILE

Continued on next page...

Continued from previous page...

Mol	Chain	Res	Type
1	F	360	TRP
1	F	379	LEU
1	F	381	CYS
1	F	433	SER
1	F	461	PHE
1	F	481	LYS
1	F	482	ILE
1	F	487	ILE
1	F	497	LEU
1	G	368	VAL
1	G	395	SER
1	G	403	LEU
1	G	433	SER
1	G	450	SER
1	G	470	GLU
1	G	490	MET
1	G	492	LYS
1	G	498	GLN
1	G	500	GLN
1	G	512[A]	SER
1	G	512[B]	SER
1	G	543	MET
1	H	308	LEU
1	H	310	LEU
1	H	316	VAL
1	H	348	ASN
1	H	351	ASP
1	H	354	LEU
1	H	368	VAL
1	H	403	LEU
1	H	417	CYS
1	H	460	THR
1	H	470	GLU
1	H	495	LEU
1	H	509	LEU
1	H	512[A]	SER
1	H	512[B]	SER
1	H	526	TYR
1	H	539	LEU
1	H	545	ASP

Some sidechains can be flipped to improve hydrogen bonding and reduce clashes. All (33) such sidechains are listed below:

Mol	Chain	Res	Type
1	A	348	ASN
1	A	506	GLN
1	A	513	HIS
1	A	516	HIS
1	B	348	ASN
1	B	373	HIS
1	B	439	ASN
1	B	506	GLN
1	B	513	HIS
1	C	348	ASN
1	C	398	HIS
1	C	414	GLN
1	C	502	GLN
1	C	513	HIS
1	C	519	ASN
1	D	348	ASN
1	D	375	GLN
1	D	413	ASN
1	E	348	ASN
1	E	359	ASN
1	E	407	ASN
1	E	441	GLN
1	E	501	HIS
1	E	502	GLN
1	E	519	ASN
1	F	348	ASN
1	F	519	ASN
1	G	375	GLN
1	G	377	HIS
1	H	348	ASN
1	H	441	GLN
1	H	502	GLN
1	H	524	HIS

5.3.3 RNA ⓘ

There are no RNA molecules in this entry.

5.4 Non-standard residues in protein, DNA, RNA chains ⓘ

There are no non-standard protein/DNA/RNA residues in this entry.

5.5 Carbohydrates [i](#)

There are no carbohydrates in this entry.

5.6 Ligand geometry [i](#)

10 ligands are modelled in this entry.

In the following table, the Counts columns list the number of bonds (or angles) for which Mogul statistics could be retrieved, the number of bonds (or angles) that are observed in the model and the number of bonds (or angles) that are defined in the chemical component dictionary. The Link column lists molecule types, if any, to which the group is linked. The Z score for a bond length (or angle) is the number of standard deviations the observed value is removed from the expected value. A bond length (or angle) with $|Z| > 2$ is considered an outlier worth inspection. RMSZ is the root-mean-square of all Z scores of the bond lengths (or angles).

Mol	Type	Chain	Res	Link	Bond lengths			Bond angles		
					Counts	RMSZ	$\# Z > 2$	Counts	RMSZ	$\# Z > 2$
2	OHT	A	1000	-	31,31,31	0.52	0	41,41,41	1.45	6 (14%)
2	OHT	B	601	-	31,31,31	0.68	0	41,41,41	1.20	4 (9%)
3	SO4	B	602	-	4,4,4	5.19	4 (100%)	6,6,6	1.96	2 (33%)
2	OHT	C	1000	-	31,31,31	0.78	0	41,41,41	1.40	6 (14%)
2	OHT	D	1000	-	31,31,31	0.80	1 (3%)	41,41,41	1.72	9 (21%)
2	OHT	E	1000	-	31,31,31	0.71	0	41,41,41	0.98	1 (2%)
2	OHT	F	1000	-	31,31,31	0.60	0	41,41,41	1.26	5 (12%)
2	OHT	G	1000	-	31,31,31	0.55	0	41,41,41	1.59	8 (19%)
2	OHT	H	601	-	31,31,31	0.65	0	41,41,41	1.87	12 (29%)
3	SO4	H	602	-	4,4,4	0.53	0	6,6,6	0.52	0

In the following table, the Chirals column lists the number of chiral outliers, the number of chiral centers analysed, the number of these observed in the model and the number defined in the chemical component dictionary. Similar counts are reported in the Torsion and Rings columns. '-' means no outliers of that kind were identified.

Mol	Type	Chain	Res	Link	Chirals	Torsions	Rings
2	OHT	A	1000	-	-	0/24/24/24	0/3/3/3
2	OHT	B	601	-	-	0/24/24/24	0/3/3/3
3	SO4	B	602	-	-	0/0/0/0	0/0/0/0
2	OHT	C	1000	-	-	0/24/24/24	0/3/3/3
2	OHT	D	1000	-	-	0/24/24/24	0/3/3/3
2	OHT	E	1000	-	-	0/24/24/24	0/3/3/3
2	OHT	F	1000	-	-	0/24/24/24	0/3/3/3
2	OHT	G	1000	-	-	0/24/24/24	0/3/3/3

Continued on next page...

Continued from previous page...

Mol	Type	Chain	Res	Link	Chirals	Torsions	Rings
2	OHT	H	601	-	-	0/24/24/24	0/3/3/3
3	SO4	H	602	-	-	0/0/0/0	0/0/0/0

All (5) bond length outliers are listed below:

Mol	Chain	Res	Type	Atoms	Z	Observed(Å)	Ideal(Å)
3	B	602	SO4	O3-S	-5.35	1.28	1.47
2	D	1000	OHT	C22-C21	2.09	1.42	1.38
3	B	602	SO4	O1-S	2.19	1.54	1.47
3	B	602	SO4	O2-S	5.79	1.66	1.47
3	B	602	SO4	O4-S	6.39	1.70	1.47

All (53) bond angle outliers are listed below:

Mol	Chain	Res	Type	Atoms	Z	Observed(°)	Ideal(°)
2	H	601	OHT	C2-C1-C7	-5.37	113.09	120.92
2	G	1000	OHT	C23-C24-N24	-3.92	103.85	114.66
2	C	1000	OHT	C2-C1-C7	-3.55	115.75	120.92
2	G	1000	OHT	C2-C1-C7	-3.51	115.80	120.92
2	C	1000	OHT	C5-C6-C1	-3.46	116.75	120.76
2	H	601	OHT	C16-C11-C8	-3.42	115.98	120.99
2	G	1000	OHT	C5-C6-C1	-3.39	116.83	120.76
2	D	1000	OHT	C2-C1-C7	-3.36	116.02	120.92
2	H	601	OHT	C1-C7-C8	-3.26	118.46	122.84
2	D	1000	OHT	C11-C8-C7	-3.26	118.18	122.40
2	H	601	OHT	C9-C8-C7	-3.21	119.82	123.47
2	D	1000	OHT	C18-C17-C7	-3.18	116.28	120.92
2	A	1000	OHT	C2-C1-C7	-3.17	116.30	120.92
2	D	1000	OHT	O20-C23-C24	-3.06	100.61	107.67
2	C	1000	OHT	C23-C24-N24	-3.06	106.24	114.66
3	B	602	SO4	O4-S-O3	-3.03	96.68	108.98
3	B	602	SO4	O2-S-O1	-3.02	99.93	109.50
2	G	1000	OHT	C16-C11-C8	-3.01	116.58	120.99
2	A	1000	OHT	C22-C17-C7	-2.94	116.64	120.92
2	A	1000	OHT	C23-C24-N24	-2.93	106.57	114.66
2	A	1000	OHT	C19-C18-C17	-2.88	117.43	120.76
2	B	601	OHT	C9-C8-C7	-2.79	120.30	123.47
2	H	601	OHT	C18-C17-C7	-2.77	116.89	120.92
2	F	1000	OHT	C2-C1-C7	-2.75	116.91	120.92
2	D	1000	OHT	C16-C11-C8	-2.74	116.97	120.99
2	G	1000	OHT	C11-C8-C7	-2.62	119.01	122.40
2	F	1000	OHT	C9-C8-C7	-2.52	120.61	123.47

Continued on next page...

Continued from previous page...

Mol	Chain	Res	Type	Atoms	Z	Observed(°)	Ideal(°)
2	C	1000	OHT	C10-C9-C8	-2.52	108.75	113.10
2	A	1000	OHT	C22-C21-C20	-2.48	116.62	119.74
2	D	1000	OHT	C23-C24-N24	-2.43	107.96	114.66
2	H	601	OHT	C5-C6-C1	-2.30	118.10	120.76
2	H	601	OHT	C13-C12-C11	-2.30	117.45	120.33
2	F	1000	OHT	C16-C11-C8	-2.27	117.66	120.99
2	F	1000	OHT	C23-C24-N24	-2.15	108.72	114.66
2	G	1000	OHT	C9-C8-C7	-2.13	121.05	123.47
2	G	1000	OHT	C2-C3-C4	-2.13	117.41	119.87
2	C	1000	OHT	C16-C11-C8	-2.07	117.95	120.99
2	B	601	OHT	C9-C8-C11	2.11	117.45	114.39
2	H	601	OHT	C22-C17-C7	2.11	123.99	120.92
2	E	1000	OHT	C18-C17-C7	2.25	124.19	120.92
2	H	601	OHT	C23-O20-C20	2.25	123.45	117.91
2	H	601	OHT	C12-C11-C16	2.26	121.95	118.60
2	C	1000	OHT	C6-C1-C2	2.28	121.98	118.60
2	A	1000	OHT	C21-C22-C17	2.57	123.75	120.76
2	D	1000	OHT	C22-C17-C7	2.60	124.71	120.92
2	B	601	OHT	C1-C7-C8	2.73	126.49	122.84
2	B	601	OHT	C23-O20-C20	3.00	125.29	117.91
2	H	601	OHT	C17-C7-C8	3.17	127.08	122.84
2	F	1000	OHT	C9-C8-C11	3.33	119.23	114.39
2	D	1000	OHT	C9-C8-C11	3.40	119.33	114.39
2	G	1000	OHT	C9-C8-C11	3.81	119.93	114.39
2	H	601	OHT	C6-C1-C7	4.06	126.83	120.92
2	D	1000	OHT	C23-O20-C20	4.17	128.17	117.91

There are no chirality outliers.

There are no torsion outliers.

There are no ring outliers.

9 monomers are involved in 36 short contacts:

Mol	Chain	Res	Type	Clashes	Symm-Clashes
2	A	1000	OHT	4	0
2	B	601	OHT	2	0
2	C	1000	OHT	7	0
2	D	1000	OHT	5	0
2	E	1000	OHT	3	0
2	F	1000	OHT	4	0
2	G	1000	OHT	5	0
2	H	601	OHT	4	0

Continued on next page...

Continued from previous page...

Mol	Chain	Res	Type	Clashes	Symm-Clashes
3	H	602	SO4	2	0

5.7 Other polymers [i](#)

There are no such residues in this entry.

5.8 Polymer linkage issues [i](#)

There are no chain breaks in this entry.

6 Fit of model and data ⓘ

6.1 Protein, DNA and RNA chains ⓘ

In the following table, the column labelled ‘#RSRZ > 2’ contains the number (and percentage) of RSRZ outliers, followed by percent RSRZ outliers for the chain as percentile scores relative to all X-ray entries and entries of similar resolution. The OWAB column contains the minimum, median, 95th percentile and maximum values of the occupancy-weighted average B-factor per residue. The column labelled ‘Q < 0.9’ lists the number of (and percentage) of residues with an average occupancy less than 0.9.

Mol	Chain	Analysed	<RSRZ>	#RSRZ > 2	OWAB(Å ²)	Q < 0.9
1	A	210/260 (80%)	-0.31	1 (0%) 91 82	33, 52, 84, 109	2 (0%)
1	B	209/260 (80%)	-0.40	0 100 100	29, 50, 82, 101	2 (0%)
1	C	220/260 (84%)	-0.27	1 (0%) 91 82	29, 52, 87, 114	2 (0%)
1	D	216/260 (83%)	-0.41	0 100 100	28, 49, 87, 113	2 (0%)
1	E	218/260 (83%)	-0.16	1 (0%) 91 82	35, 69, 103, 124	2 (0%)
1	F	220/260 (84%)	-0.22	4 (1%) 71 49	31, 57, 90, 122	2 (0%)
1	G	219/260 (84%)	-0.20	2 (0%) 85 70	33, 55, 92, 126	2 (0%)
1	H	218/260 (83%)	-0.08	5 (2%) 64 40	32, 64, 100, 139	2 (0%)
All	All	1730/2080 (83%)	-0.25	14 (0%) 87 74	28, 56, 94, 139	16 (0%)

All (14) RSRZ outliers are listed below:

Mol	Chain	Res	Type	RSRZ
1	H	419	GLU	3.9
1	G	460	THR	3.1
1	H	461	PHE	3.1
1	A	410	LEU	2.7
1	F	420	GLY	2.6
1	E	321	ASP	2.6
1	H	417	CYS	2.5
1	F	321	ASP	2.4
1	C	408	LEU	2.4
1	F	369	ASP	2.1
1	H	460	THR	2.1
1	F	337	PHE	2.1
1	G	528	MET	2.0
1	H	309	SER	2.0

6.2 Non-standard residues in protein, DNA, RNA chains [i](#)

There are no non-standard protein/DNA/RNA residues in this entry.

6.3 Carbohydrates [i](#)

There are no carbohydrates in this entry.

6.4 Ligands [i](#)

In the following table, the Atoms column lists the number of modelled atoms in the group and the number defined in the chemical component dictionary. LLDF column lists the quality of electron density of the group with respect to its neighbouring residues in protein, DNA or RNA chains. The B-factors column lists the minimum, median, 95th percentile and maximum values of B factors of atoms in the group. The column labelled 'Q< 0.9' lists the number of atoms with occupancy less than 0.9.

Mol	Type	Chain	Res	Atoms	RSCC	RSR	LLDF	B-factors(\AA^2)	Q<0.9
2	OHT	H	601	29/29	0.95	0.23	0.65	45,51,59,61	0
2	OHT	A	1000	29/29	0.98	0.27	0.60	42,46,51,53	0
2	OHT	D	1000	29/29	0.97	0.20	0.49	39,44,52,54	0
2	OHT	B	601	29/29	0.97	0.20	0.45	39,43,54,58	0
2	OHT	E	1000	29/29	0.97	0.20	0.12	43,51,58,61	0
2	OHT	F	1000	29/29	0.96	0.19	-0.04	41,48,52,52	0
2	OHT	C	1000	29/29	0.96	0.23	-0.05	43,50,55,57	0
2	OHT	G	1000	29/29	0.96	0.20	-0.15	44,48,52,53	0
3	SO4	B	602	5/5	0.80	0.35	-	259,262,265,272	0
3	SO4	H	602	5/5	0.98	0.36	-	91,95,100,102	0

6.5 Other polymers [i](#)

There are no such residues in this entry.