



Full wwPDB X-ray Structure Validation Report ⓘ

Feb 1, 2016 – 07:52 PM GMT

PDB ID : 4Q7H
Title : Crystal structure of SAMHD1 catalytic core with GTP
Authors : Xiaohong, Q.; Yanhong, L.; Jia, K.; Xiaofang, Y.
Deposited on : 2014-04-25
Resolution : 2.59 Å(reported)

This is a Full wwPDB X-ray Structure Validation Report for a publicly released PDB entry.
We welcome your comments at validation@mail.wwpdb.org
A user guide is available at
<http://wwpdb.org/validation/2016/XrayValidationReportHelp>
with specific help available everywhere you see the ⓘ symbol.

The following versions of software and data (see [references ⓘ](#)) were used in the production of this report:

MolProbity : 4.02b-467
Mogul : 1.7 (RC4), CSD as536be (2015)
Xtriage (Phenix) : 1.9-1692
EDS : rb-20026688
Percentile statistics : 20151230.v01 (using entries in the PDB archive December 30th 2015)
Refmac : 5.8.0135
CCP4 : 6.5.0
Ideal geometry (proteins) : Engh & Huber (2001)
Ideal geometry (DNA, RNA) : Parkinson et al. (1996)
Validation Pipeline (wwPDB-VP) : trunk26865

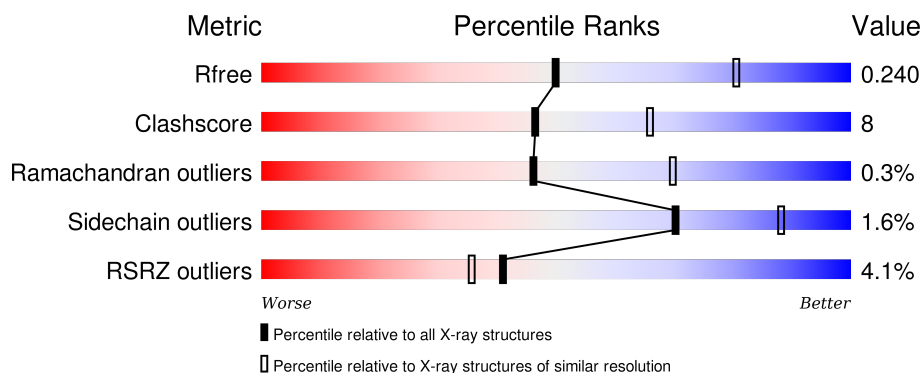
1 Overall quality at a glance ⓘ

The following experimental techniques were used to determine the structure:

X-RAY DIFFRACTION

The reported resolution of this entry is 2.59 Å.

Percentile scores (ranging between 0-100) for global validation metrics of the entry are shown in the following graphic. The table shows the number of entries on which the scores are based.



Metric	Whole archive (#Entries)	Similar resolution (#Entries, resolution range(Å))
R_{free}	91344	2636 (2.60-2.56)
Clashscore	102246	3003 (2.60-2.56)
Ramachandran outliers	100387	2956 (2.60-2.56)
Sidechain outliers	100360	2956 (2.60-2.56)
RSRZ outliers	91569	2642 (2.60-2.56)

The table below summarises the geometric issues observed across the polymeric chains and their fit to the electron density. The red, orange, yellow and green segments on the lower bar indicate the fraction of residues that contain outliers for ≥ 3 , 2, 1 and 0 types of geometric quality criteria. A grey segment represents the fraction of residues that are not modelled. The numeric value for each fraction is indicated below the corresponding segment, with a dot representing fractions $\leq 5\%$. The upper red bar (where present) indicates the fraction of residues that have poor fit to the electron density. The numeric value is given above the bar.

Mol	Chain	Length	Quality of chain
1	A	526	<div> <div> <div></div> <div>74%</div> <div>13%</div> <div>•</div> <div>13%</div> </div> </div>
1	B	526	<div> <div>6%</div> <div> <div></div> <div>72%</div> <div>13%</div> <div>15%</div> </div> </div>
1	C	526	<div> <div>3%</div> <div> <div></div> <div>69%</div> <div>15%</div> <div>•</div> <div>15%</div> </div> </div>
1	D	526	<div> <div>4%</div> <div> <div></div> <div>67%</div> <div>15%</div> <div>•</div> <div>17%</div> </div> </div>

The following table lists non-polymeric compounds, carbohydrate monomers and non-standard

residues in protein, DNA, RNA chains that are outliers for geometric or electron-density-fit criteria:

Mol	Type	Chain	Res	Chirality	Geometry	Clashes	Electron density
3	GTP	A	902	-	-	-	X
3	GTP	B	902	-	-	X	X
3	GTP	C	902	-	-	-	X

2 Entry composition [i](#)

There are 4 unique types of molecules in this entry. The entry contains 14424 atoms, of which 0 are hydrogens and 0 are deuteriums.

In the tables below, the ZeroOcc column contains the number of atoms modelled with zero occupancy, the AltConf column contains the number of residues with at least one atom in alternate conformation and the Trace column contains the number of residues modelled with at most 2 atoms.

- Molecule 1 is a protein called Deoxynucleoside triphosphate triphosphohydrolase SAMHD1.

Mol	Chain	Residues	Atoms					ZeroOcc	AltConf	Trace
1	A	459	Total	C	N	O	S	0	0	0
			3646	2336	630	662	18			
1	B	449	Total	C	N	O	S	0	0	0
			3557	2277	616	646	18			
1	C	447	Total	C	N	O	S	0	0	0
			3572	2291	621	642	18			
1	D	439	Total	C	N	O	S	0	0	0
			3493	2237	605	634	17			

There are 36 discrepancies between the modelled and reference sequences:

Chain	Residue	Modelled	Actual	Comment	Reference
A	101	HIS	-	EXPRESSION TAG	UNP Q9Y3Z3
A	102	HIS	-	EXPRESSION TAG	UNP Q9Y3Z3
A	103	HIS	-	EXPRESSION TAG	UNP Q9Y3Z3
A	104	HIS	-	EXPRESSION TAG	UNP Q9Y3Z3
A	105	HIS	-	EXPRESSION TAG	UNP Q9Y3Z3
A	106	HIS	-	EXPRESSION TAG	UNP Q9Y3Z3
A	107	GLY	-	EXPRESSION TAG	UNP Q9Y3Z3
A	108	SER	-	EXPRESSION TAG	UNP Q9Y3Z3
A	266	TYR	CYS	ENGINEERED MUTATION	UNP Q9Y3Z3
B	101	HIS	-	EXPRESSION TAG	UNP Q9Y3Z3
B	102	HIS	-	EXPRESSION TAG	UNP Q9Y3Z3
B	103	HIS	-	EXPRESSION TAG	UNP Q9Y3Z3
B	104	HIS	-	EXPRESSION TAG	UNP Q9Y3Z3
B	105	HIS	-	EXPRESSION TAG	UNP Q9Y3Z3
B	106	HIS	-	EXPRESSION TAG	UNP Q9Y3Z3
B	107	GLY	-	EXPRESSION TAG	UNP Q9Y3Z3
B	108	SER	-	EXPRESSION TAG	UNP Q9Y3Z3
B	266	TYR	CYS	ENGINEERED MUTATION	UNP Q9Y3Z3
C	101	HIS	-	EXPRESSION TAG	UNP Q9Y3Z3
C	102	HIS	-	EXPRESSION TAG	UNP Q9Y3Z3
C	103	HIS	-	EXPRESSION TAG	UNP Q9Y3Z3

Continued on next page...

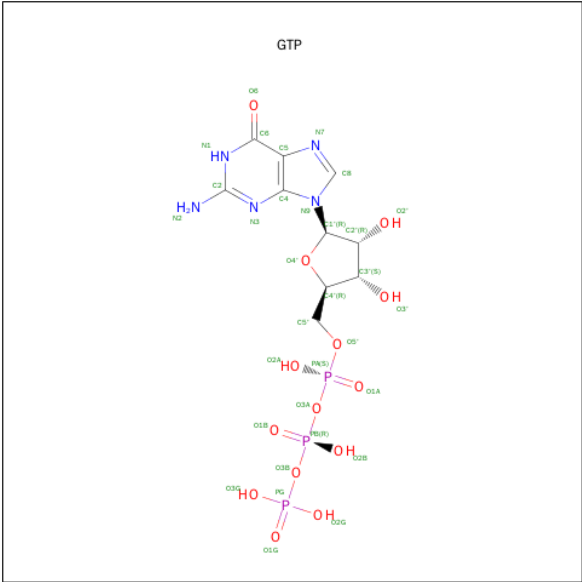
Continued from previous page...

Chain	Residue	Modelled	Actual	Comment	Reference
C	104	HIS	-	EXPRESSION TAG	UNP Q9Y3Z3
C	105	HIS	-	EXPRESSION TAG	UNP Q9Y3Z3
C	106	HIS	-	EXPRESSION TAG	UNP Q9Y3Z3
C	107	GLY	-	EXPRESSION TAG	UNP Q9Y3Z3
C	108	SER	-	EXPRESSION TAG	UNP Q9Y3Z3
C	266	TYR	CYS	ENGINEERED MUTATION	UNP Q9Y3Z3
D	101	HIS	-	EXPRESSION TAG	UNP Q9Y3Z3
D	102	HIS	-	EXPRESSION TAG	UNP Q9Y3Z3
D	103	HIS	-	EXPRESSION TAG	UNP Q9Y3Z3
D	104	HIS	-	EXPRESSION TAG	UNP Q9Y3Z3
D	105	HIS	-	EXPRESSION TAG	UNP Q9Y3Z3
D	106	HIS	-	EXPRESSION TAG	UNP Q9Y3Z3
D	107	GLY	-	EXPRESSION TAG	UNP Q9Y3Z3
D	108	SER	-	EXPRESSION TAG	UNP Q9Y3Z3
D	266	TYR	CYS	ENGINEERED MUTATION	UNP Q9Y3Z3

- Molecule 2 is ZINC ION (three-letter code: ZN) (formula: Zn).

Mol	Chain	Residues	Atoms	ZeroOcc	AltConf
2	B	1	Total Zn 1 1	0	0
2	A	1	Total Zn 1 1	0	0
2	D	1	Total Zn 1 1	0	0
2	C	1	Total Zn 1 1	0	0

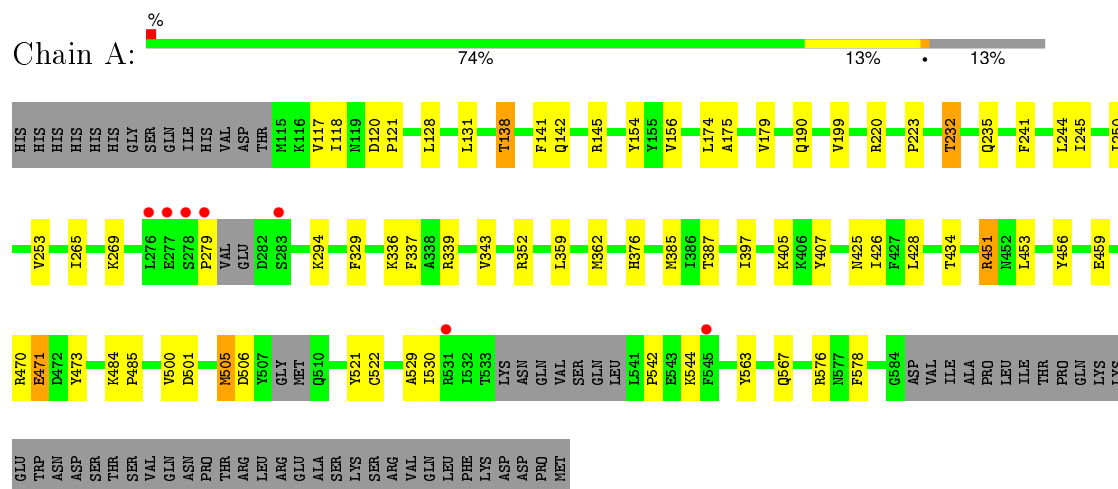
- Molecule 3 is GUANOSINE-5'-TRIPHOSPHATE (three-letter code: GTP) (formula: C₁₀H₁₆N₅O₁₄P₃).



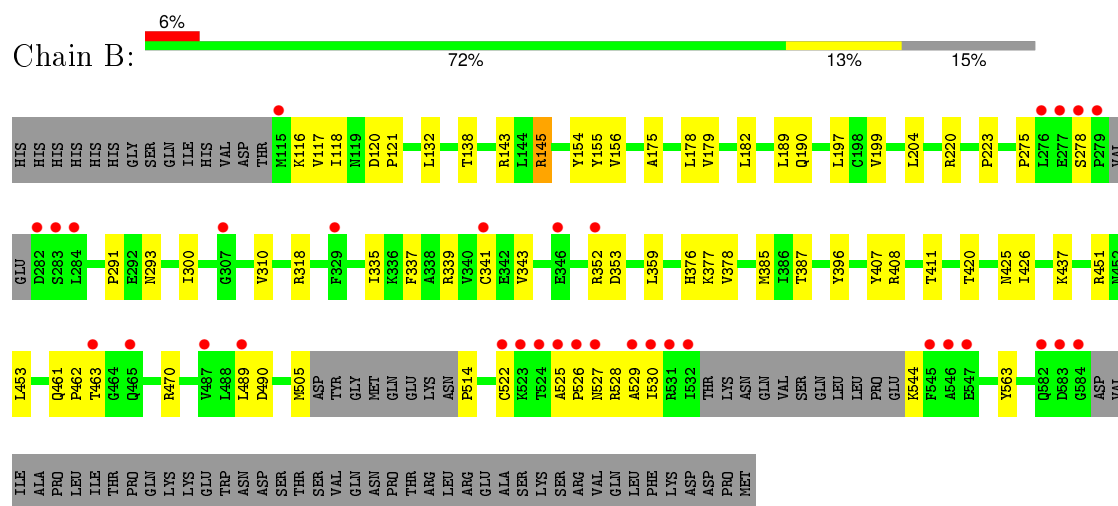
3 Residue-property plots

These plots are drawn for all protein, RNA and DNA chains in the entry. The first graphic for a chain summarises the proportions of errors displayed in the second graphic. The second graphic shows the sequence view annotated by issues in geometry and electron density. Residues are color-coded according to the number of geometric quality criteria for which they contain at least one outlier: green = 0, yellow = 1, orange = 2 and red = 3 or more. A red dot above a residue indicates a poor fit to the electron density ($RSRZ > 2$). Stretches of 2 or more consecutive residues without any outlier are shown as a green connector. Residues present in the sample, but not in the model, are shown in grey.

- Molecule 1: Deoxynucleoside triphosphate triphosphohydrolase SAMHD1

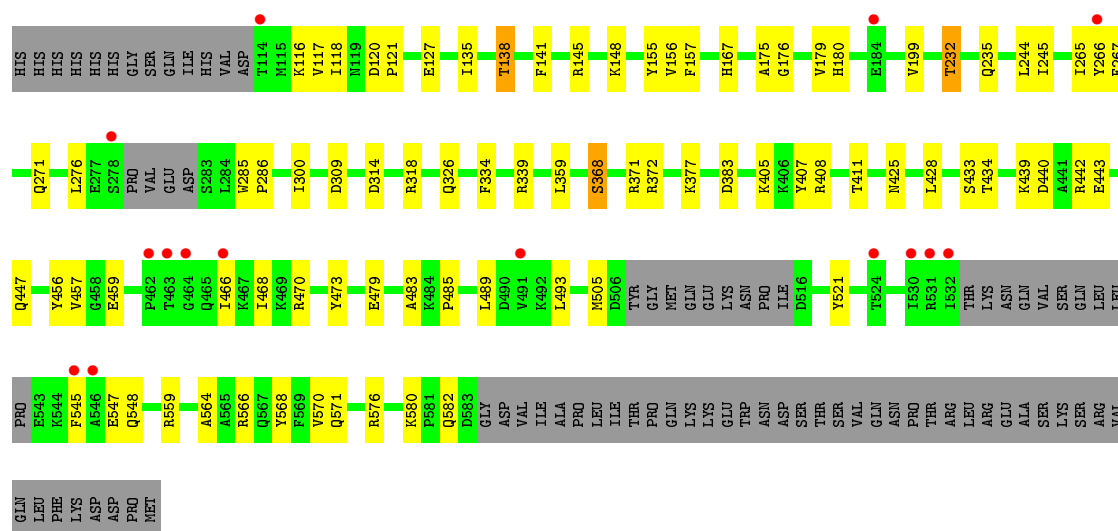


- Molecule 1: Deoxynucleoside triphosphate triphosphohydrolase SAMHD1

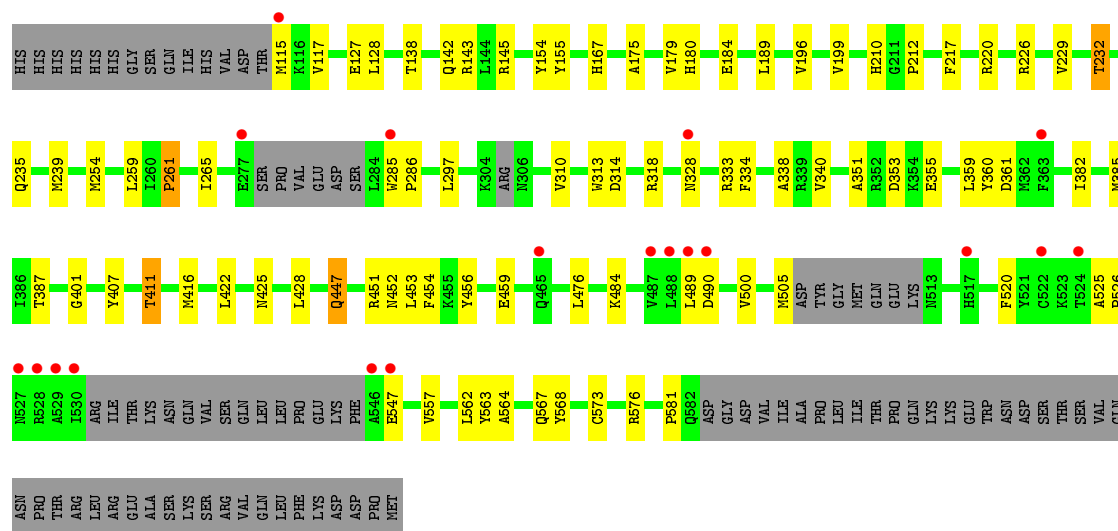


- Molecule 1: Deoxynucleoside triphosphate triphosphohydrolase SAMHD1





• Molecule 1: Deoxynucleoside triphosphate triphosphohydrolase SAMHD1



4 Data and refinement statistics

Property	Value	Source
Space group	P 21 21 21	Depositor
Cell constants a, b, c, α , β , γ	80.94Å 142.76Å 199.50Å 90.00° 90.00° 90.00°	Depositor
Resolution (Å)	34.57 – 2.59 34.57 – 2.59	Depositor EDS
% Data completeness (in resolution range)	94.5 (34.57-2.59) 88.6 (34.57-2.59)	Depositor EDS
R_{merge}	(Not available)	Depositor
R_{sym}	(Not available)	Depositor
$\langle I/\sigma(I) \rangle$ ¹	2.60 (at 2.57Å)	Xtriage
Refinement program	PHENIX (phenix.refine: 1.8.4_1496)	Depositor
R, R_{free}	0.191 , 0.248 0.186 , 0.240	Depositor DCC
R_{free} test set	1872 reflections (2.90%)	DCC
Wilson B-factor (Å ²)	44.8	Xtriage
Anisotropy	0.404	Xtriage
Bulk solvent k_{sol} (e/Å ³), B_{sol} (Å ²)	0.30 , 38.8	EDS
Estimated twinning fraction	No twinning to report.	Xtriage
L-test for twinning ²	$\langle L \rangle = 0.50$, $\langle L^2 \rangle = 0.33$	Xtriage
Outliers	0 of 68953 reflections	Xtriage
F_o, F_c correlation	0.94	EDS
Total number of atoms	14424	wwPDB-VP
Average B, all atoms (Å ²)	52.0	wwPDB-VP

Xtriage's analysis on translational NCS is as follows: *The largest off-origin peak in the Patterson function is 2.79% of the height of the origin peak. No significant pseudotranslation is detected.*

¹Intensities estimated from amplitudes.

²Theoretical values of $\langle |L| \rangle$, $\langle L^2 \rangle$ for acentric reflections are 0.5, 0.375 respectively for untwinned datasets, and 0.333, 0.2 for perfectly twinned datasets.

5 Model quality

5.1 Standard geometry

Bond lengths and bond angles in the following residue types are not validated in this section: GTP, ZN

The Z score for a bond length (or angle) is the number of standard deviations the observed value is removed from the expected value. A bond length (or angle) with $|Z| > 5$ is considered an outlier worth inspection. RMSZ is the root-mean-square of all Z scores of the bond lengths (or angles).

Mol	Chain	Bond lengths		Bond angles	
		RMSZ	# Z >5	RMSZ	# Z >5
1	A	0.46	0/3732	0.59	2/5052 (0.0%)
1	B	0.45	0/3640	0.60	3/4927 (0.1%)
1	C	0.43	0/3656	0.57	0/4946
1	D	0.45	0/3574	0.59	2/4833 (0.0%)
All	All	0.45	0/14602	0.59	7/19758 (0.0%)

Chiral center outliers are detected by calculating the chiral volume of a chiral center and verifying if the center is modelled as a planar moiety or with the opposite hand. A planarity outlier is detected by checking planarity of atoms in a peptide group, atoms in a mainchain group or atoms of a sidechain that are expected to be planar.

Mol	Chain	#Chirality outliers	#Planarity outliers
1	A	0	1

There are no bond length outliers.

All (7) bond angle outliers are listed below:

Mol	Chain	Res	Type	Atoms	Z	Observed(°)	Ideal(°)
1	D	526	PRO	N-CA-CB	6.03	110.53	103.30
1	A	279	PRO	N-CA-CB	5.86	110.33	103.30
1	B	514	PRO	N-CA-CB	5.82	110.29	103.30
1	B	526	PRO	N-CA-CB	5.68	110.11	103.30
1	A	542	PRO	N-CA-CB	5.66	110.09	103.30
1	D	261	PRO	N-CA-CB	5.65	110.08	103.30
1	B	145	ARG	NE-CZ-NH2	-5.43	117.58	120.30

There are no chirality outliers.

All (1) planarity outliers are listed below:

Mol	Chain	Res	Type	Group
1	A	505	MET	Peptide

5.2 Too-close contacts ⓘ

In the following table, the Non-H and H(model) columns list the number of non-hydrogen atoms and hydrogen atoms in the chain respectively. The H(added) column lists the number of hydrogen atoms added and optimized by MolProbity. The Clashes column lists the number of clashes within the asymmetric unit, whereas Symm-Clashes lists symmetry related clashes.

Mol	Chain	Non-H	H(model)	H(added)	Clashes	Symm-Clashes
1	A	3646	0	3491	49	0
1	B	3557	0	3406	49	0
1	C	3572	0	3450	66	0
1	D	3493	0	3330	57	0
2	A	1	0	0	0	0
2	B	1	0	0	0	0
2	C	1	0	0	0	0
2	D	1	0	0	0	0
3	A	32	0	12	2	0
3	B	32	0	11	9	0
3	C	32	0	12	8	0
4	A	18	0	0	0	0
4	B	18	0	0	0	0
4	C	7	0	0	0	0
4	D	13	0	0	0	0
All	All	14424	0	13712	212	0

The all-atom clashscore is defined as the number of clashes found per 1000 atoms (including hydrogen atoms). The all-atom clashscore for this structure is 8.

All (212) close contacts within the same asymmetric unit are listed below, sorted by their clash magnitude.

Atom-1	Atom-2	Interatomic distance (Å)	Clash overlap (Å)
1:C:232:THR:HG22	1:C:235:GLN:H	1.33	0.92
1:A:232:THR:HG22	1:A:235:GLN:H	1.37	0.89
1:D:447:GLN:HE21	1:D:452:ASN:HD22	1.19	0.88
3:C:902:GTP:N2	3:C:902:GTP:O1B	2.12	0.83
1:D:489:LEU:HD21	1:D:567:GLN:HG3	1.61	0.83
1:C:116:LYS:NZ	3:C:902:GTP:H2'	1.95	0.81
1:D:117:VAL:HG22	1:D:127:GLU:HG2	1.66	0.76
1:B:343:VAL:HG22	1:B:529:ALA:HB2	1.68	0.75

Continued on next page...

Continued from previous page...

Atom-1	Atom-2	Interatomic distance (Å)	Clash overlap (Å)
1:B:408:ARG:H	1:B:411:THR:HG22	1.52	0.73
1:A:145:ARG:NH2	1:B:154:TYR:O	2.24	0.71
1:D:385:MET:HE1	1:D:453:LEU:HD22	1.72	0.71
1:C:425:ASN:OD1	1:D:425:ASN:ND2	2.24	0.70
1:C:479:GLU:OE1	1:C:576:ARG:NH1	2.25	0.70
1:D:232:THR:HG22	1:D:235:GLN:H	1.57	0.68
1:A:385:MET:HE1	1:A:453:LEU:HB3	1.73	0.68
1:A:138:THR:HG22	1:A:141:PHE:H	1.58	0.68
1:C:334:PHE:HE2	1:C:359:LEU:HD11	1.59	0.68
1:D:447:GLN:NE2	1:D:452:ASN:HD22	1.90	0.68
1:D:407:TYR:HB3	1:D:411:THR:HG22	1.74	0.68
1:A:138:THR:HG21	1:A:244:LEU:HG	1.78	0.66
1:A:175:ALA:HB1	1:A:199:VAL:HG12	1.77	0.65
1:A:397:ILE:HG21	1:A:426:ILE:HD11	1.77	0.65
1:A:352:ARG:HG2	1:A:521:TYR:CZ	2.32	0.65
1:B:275:PRO:HB2	1:B:278:SER:HB3	1.79	0.65
1:C:116:LYS:HZ1	3:C:902:GTP:H2'	1.59	0.64
1:A:451:ARG:NE	3:B:902:GTP:O1A	2.32	0.63
1:B:544:LYS:N	1:D:360:TYR:HH	1.96	0.63
1:C:138:THR:HG22	1:C:141:PHE:H	1.61	0.62
1:C:505:MET:HE3	1:C:545:PHE:HB2	1.80	0.62
1:B:522:CYS:HB2	1:B:530:ILE:HD13	1.81	0.61
1:C:145:ARG:NH2	1:D:154:TYR:O	2.34	0.61
1:D:179:VAL:HG12	1:D:196:VAL:HG22	1.82	0.61
1:D:476:LEU:HB2	1:D:500:VAL:HG11	1.83	0.60
1:A:505:MET:HB2	1:A:506:ASP:HA	1.84	0.59
1:B:525:ALA:HB1	1:B:527:ASN:HD21	1.67	0.59
1:D:143:ARG:NH2	1:D:210:HIS:O	2.36	0.59
1:C:145:ARG:NH2	1:D:155:TYR:HA	2.18	0.58
1:C:407:TYR:HB3	1:C:411:THR:HG22	1.85	0.58
1:D:239:MET:HE3	1:D:416:MET:SD	2.44	0.58
1:D:334:PHE:O	1:D:338:ALA:HB2	2.04	0.58
1:C:334:PHE:CE2	1:C:359:LEU:HD11	2.39	0.57
1:C:505:MET:HG2	1:C:545:PHE:CD2	2.39	0.57
1:A:505:MET:N	1:A:506:ASP:OD1	2.33	0.57
1:B:120:ASP:OD1	1:B:318:ARG:NH2	2.38	0.56
1:A:425:ASN:OD1	1:B:425:ASN:ND2	2.38	0.56
1:B:385:MET:HE1	1:B:453:LEU:HB3	1.86	0.56
1:A:154:TYR:O	1:B:145:ARG:NH2	2.38	0.56
1:D:328:ASN:HB2	1:D:361:ASP:HB3	1.86	0.56
1:C:138:THR:HG21	1:C:244:LEU:HG	1.86	0.56

Continued on next page...

Continued from previous page...

Atom-1	Atom-2	Interatomic distance (Å)	Clash overlap (Å)
1:C:116:LYS:HZ3	3:C:902:GTP:H2'	1.71	0.56
1:C:116:LYS:HE2	3:C:902:GTP:H3'	1.86	0.56
1:A:339:ARG:HD3	1:A:521:TYR:CZ	2.41	0.56
1:C:433:SER:O	1:C:442:ARG:NH1	2.39	0.55
1:C:117:VAL:HG22	1:C:127:GLU:HG2	1.88	0.55
1:C:468:ILE:H	1:C:548:GLN:HE22	1.52	0.55
1:C:266:TYR:CE2	1:C:276:LEU:HD12	2.42	0.55
1:B:143:ARG:HD2	1:B:420:THR:HA	1.89	0.54
1:C:155:TYR:HA	1:D:145:ARG:NH2	2.21	0.54
1:C:483:ALA:HB1	1:C:571:GLN:HG3	1.89	0.54
1:A:156:VAL:HG11	1:A:376:HIS:CE1	2.43	0.54
1:C:570:VAL:HG13	1:C:580:LYS:HE3	1.88	0.54
1:C:179:VAL:HG22	1:C:300:ILE:HD12	1.90	0.54
1:D:484:LYS:HE3	1:D:484:LYS:HA	1.90	0.53
1:A:522:CYS:HB2	1:A:530:ILE:HD11	1.89	0.53
1:B:132:LEU:HD22	1:B:204:LEU:HD22	1.90	0.53
1:C:156:VAL:HG23	1:C:157:PHE:CD2	2.43	0.53
1:D:189:LEU:HD21	1:D:340:VAL:HB	1.90	0.53
1:D:142:GLN:OE1	1:D:145:ARG:HD2	2.09	0.52
1:A:336:LYS:HD2	1:A:337:PHE:CE1	2.44	0.52
1:B:117:VAL:O	3:B:902:GTP:O2'	2.28	0.52
1:D:220:ARG:HG2	1:D:387:THR:HG21	1.92	0.52
1:D:333:ARG:NH2	1:D:355:GLU:OE1	2.39	0.52
1:C:120:ASP:OD1	1:C:121:PRO:HD2	2.10	0.52
1:D:334:PHE:CE2	1:D:359:LEU:HD21	2.45	0.51
1:C:489:LEU:HD12	1:C:564:ALA:HB2	1.91	0.51
1:D:254:MET:HE1	1:D:265:ILE:HG13	1.92	0.51
1:B:408:ARG:H	1:B:411:THR:CG2	2.23	0.51
1:A:576:ARG:HG2	1:A:578:PHE:CE2	2.45	0.51
1:C:368:SER:O	1:C:372:ARG:HB2	2.10	0.51
3:A:902:GTP:H5''	1:B:451:ARG:HE	1.75	0.51
1:B:116:LYS:NZ	3:B:902:GTP:H3'	2.26	0.50
1:C:439:LYS:NZ	1:C:440:ASP:OD1	2.38	0.50
1:B:116:LYS:HE3	3:B:902:GTP:H2'	1.92	0.50
1:D:573:CYS:SG	1:D:581:PRO:HG3	2.51	0.50
1:C:457:VAL:O	1:C:566:ARG:NH1	2.44	0.50
1:C:339:ARG:HD3	1:C:521:TYR:CZ	2.46	0.50
1:D:314:ASP:OD1	1:D:318:ARG:NH1	2.45	0.50
1:A:451:ARG:NH2	3:B:902:GTP:C6	2.80	0.50
1:B:156:VAL:HG11	1:B:376:HIS:CE1	2.47	0.50
1:C:138:THR:HG22	1:C:141:PHE:N	2.25	0.49

Continued on next page...

Continued from previous page...

Atom-1	Atom-2	Interatomic distance (Å)	Clash overlap (Å)
1:D:220:ARG:NH2	1:D:500:VAL:O	2.45	0.49
1:D:155:TYR:O	1:D:451:ARG:NH1	2.45	0.49
1:C:408:ARG:H	1:C:411:THR:HB	1.77	0.49
1:A:329:PHE:CD1	1:A:362:MET:HB2	2.47	0.49
1:A:220:ARG:HG2	1:A:387:THR:HG21	1.94	0.49
1:C:405:LYS:HD3	1:C:407:TYR:OH	2.12	0.49
1:C:493:LEU:HB2	1:C:568:TYR:CE2	2.47	0.49
1:C:483:ALA:O	1:C:485:PRO:HD3	2.13	0.49
1:D:254:MET:HE3	1:D:259:LEU:HD23	1.95	0.48
1:B:489:LEU:HD21	1:B:563:TYR:CE2	2.48	0.48
1:B:223:PRO:CG	1:B:470:ARG:HG2	2.43	0.48
1:A:501:ASP:N	1:A:501:ASP:OD1	2.42	0.48
1:D:351:ALA:O	1:D:520:PHE:HA	2.14	0.48
1:D:476:LEU:CB	1:D:500:VAL:HG11	2.44	0.47
1:D:212:PRO:HD2	1:D:217:PHE:CD1	2.49	0.47
1:B:175:ALA:HB2	1:B:310:VAL:HG21	1.95	0.47
1:A:241:PHE:CE2	1:A:245:ILE:HD11	2.50	0.47
1:D:385:MET:CE	1:D:453:LEU:HD22	2.41	0.47
1:B:116:LYS:HE2	3:B:902:GTP:O2A	2.14	0.47
1:A:245:ILE:HG23	1:A:250:ILE:HB	1.96	0.47
1:C:116:LYS:HE2	3:C:902:GTP:C3'	2.45	0.46
1:D:385:MET:HG2	1:D:454:PHE:CE2	2.49	0.46
1:B:175:ALA:O	1:B:179:VAL:HG22	2.15	0.46
1:C:470:ARG:HG3	1:C:473:TYR:CZ	2.50	0.46
1:B:522:CYS:HB2	1:B:530:ILE:HG21	1.96	0.46
1:A:505:MET:CB	1:A:506:ASP:HA	2.46	0.46
1:A:470:ARG:HG3	1:A:473:TYR:CE2	2.49	0.46
1:C:175:ALA:HB1	1:C:199:VAL:HG12	1.97	0.45
1:C:148:LYS:HB2	1:C:148:LYS:HE2	1.63	0.45
1:D:167:HIS:HA	1:D:318:ARG:NH1	2.30	0.45
1:D:261:PRO:O	1:D:265:ILE:HD12	2.16	0.45
1:A:405:LYS:HD3	1:A:407:TYR:OH	2.17	0.45
1:D:175:ALA:HB1	1:D:199:VAL:HG12	1.98	0.45
1:B:197:LEU:HA	1:B:197:LEU:HD23	1.84	0.45
1:A:265:ILE:O	1:A:269:LYS:HG3	2.17	0.45
1:B:353:ASP:OD1	1:B:530:ILE:HD11	2.16	0.45
1:B:179:VAL:HG11	1:B:199:VAL:HG21	1.99	0.45
1:C:377:LYS:HD2	1:C:456:TYR:CE1	2.51	0.45
1:C:443:GLU:O	1:C:447:GLN:HG2	2.17	0.45
1:A:120:ASP:OD1	1:A:121:PRO:HD2	2.17	0.45
1:A:359:LEU:HA	1:A:359:LEU:HD12	1.80	0.45

Continued on next page...

Continued from previous page...

Atom-1	Atom-2	Interatomic distance (Å)	Clash overlap (Å)
1:B:116:LYS:CE	3:B:902:GTP:H3'	2.46	0.44
1:D:505:MET:HG2	1:D:547:GLU:O	2.17	0.44
1:A:220:ARG:HH21	1:A:501:ASP:HA	1.82	0.44
1:D:310:VAL:HG12	1:D:313:TRP:CE3	2.51	0.44
1:C:245:ILE:HD12	1:C:265:ILE:HD13	1.98	0.44
1:D:562:LEU:HD23	1:D:562:LEU:HA	1.80	0.44
1:B:116:LYS:HE3	3:B:902:GTP:H3'	1.99	0.44
1:C:470:ARG:HG3	1:C:473:TYR:CE2	2.53	0.44
1:C:285:TRP:HA	1:C:286:PRO:HD3	1.73	0.43
1:A:456:TYR:OH	1:A:459:GLU:HB2	2.17	0.43
1:A:117:VAL:O	3:A:902:GTP:O2'	2.31	0.43
1:D:353:ASP:OD1	1:D:353:ASP:N	2.52	0.43
1:C:167:HIS:HA	1:C:318:ARG:HD2	2.00	0.43
1:B:341:CYS:HB2	1:B:528:ARG:HA	2.00	0.43
1:A:179:VAL:HG21	1:A:199:VAL:HG11	2.00	0.43
1:B:376:HIS:HE1	1:B:378:VAL:HB	1.83	0.43
1:D:297:LEU:HD23	1:D:297:LEU:HA	1.79	0.43
1:C:428:LEU:HD13	1:D:425:ASN:HB2	2.01	0.43
1:C:466:ILE:O	1:C:466:ILE:HD12	2.18	0.43
1:C:138:THR:HG21	1:C:244:LEU:CG	2.49	0.43
1:A:118:ILE:HD12	1:A:128:LEU:HD11	2.00	0.43
1:D:447:GLN:HG3	1:D:452:ASN:HB2	2.01	0.43
1:B:178:LEU:HD13	1:B:335:ILE:HG12	2.01	0.43
1:C:425:ASN:HB2	1:D:428:LEU:HD13	2.01	0.42
1:C:116:LYS:HE3	3:C:902:GTP:HN22	1.84	0.42
1:D:143:ARG:NH1	1:D:422:LEU:O	2.53	0.42
1:C:179:VAL:HG21	1:C:199:VAL:HG11	2.01	0.42
1:A:471:GLU:H	1:A:471:GLU:HG3	1.31	0.42
1:B:377:LYS:HB2	1:B:377:LYS:HE3	1.92	0.42
1:C:135:ILE:O	1:C:138:THR:HB	2.19	0.42
1:B:489:LEU:HD12	1:B:489:LEU:HA	1.85	0.42
1:C:314:ASP:OD1	1:C:318:ARG:HD2	2.19	0.42
1:A:232:THR:HB	1:A:235:GLN:NE2	2.34	0.42
1:A:174:LEU:HD23	1:A:174:LEU:HA	1.81	0.42
1:B:291:PRO:HG2	1:B:293:ASN:OD1	2.20	0.42
1:A:131:LEU:HD13	1:A:253:VAL:HG12	2.02	0.42
1:B:396:TYR:CD1	1:B:437:LYS:HD3	2.55	0.42
1:C:176:GLY:O	1:C:180:HIS:HB2	2.20	0.42
1:B:461:GLN:HA	1:B:462:PRO:HD3	1.94	0.42
1:D:447:GLN:HE21	1:D:452:ASN:ND2	2.00	0.41
1:C:300:ILE:O	1:C:309:ASP:HB2	2.20	0.41

Continued on next page...

Continued from previous page...

Atom-1	Atom-2	Interatomic distance (Å)	Clash overlap (Å)
1:A:484:LYS:HA	1:A:485:PRO:HD3	1.77	0.41
1:B:359:LEU:HA	1:B:359:LEU:HD23	1.88	0.41
1:A:544:LYS:N	1:A:544:LYS:HD2	2.35	0.41
1:A:563:TYR:O	1:A:567:GLN:HG2	2.20	0.41
1:C:116:LYS:HE3	3:C:902:GTP:O1B	2.20	0.41
1:D:401:GLY:HA3	1:D:407:TYR:CE2	2.56	0.41
1:B:220:ARG:HG2	1:B:387:THR:HG21	2.01	0.41
1:C:493:LEU:HA	1:C:493:LEU:HD23	1.87	0.41
1:D:115:MET:HB2	1:D:128:LEU:O	2.21	0.41
1:C:407:TYR:HD2	1:C:411:THR:HG22	1.85	0.41
1:C:339:ARG:HD3	1:C:521:TYR:CE2	2.55	0.41
1:A:223:PRO:CG	1:A:470:ARG:HG2	2.51	0.41
1:C:267:PHE:O	1:C:271:GLN:HG3	2.20	0.41
1:B:407:TYR:HD2	1:B:411:THR:HG23	1.86	0.41
1:B:118:ILE:HD13	3:B:902:GTP:C2'	2.50	0.41
1:C:470:ARG:HA	1:C:473:TYR:CE1	2.55	0.41
1:A:190:GLN:O	1:A:294:LYS:NZ	2.44	0.41
1:D:563:TYR:O	1:D:567:GLN:HG2	2.21	0.41
1:C:179:VAL:CG2	1:C:199:VAL:HG11	2.51	0.41
1:A:428:LEU:HA	1:A:428:LEU:HD23	1.84	0.41
1:A:343:VAL:HG22	1:A:529:ALA:CB	2.51	0.41
1:B:189:LEU:O	1:B:190:GLN:HB2	2.20	0.41
1:B:300:ILE:O	1:B:310:VAL:HG22	2.20	0.41
1:D:564:ALA:O	1:D:568:TYR:HD1	2.04	0.41
1:A:138:THR:HG21	1:A:244:LEU:CG	2.48	0.40
1:B:120:ASP:OD1	1:B:121:PRO:HD2	2.21	0.40
1:D:226:ARG:O	1:D:229:VAL:HG22	2.20	0.40
1:D:382:ILE:HA	1:D:385:MET:HE3	2.03	0.40
1:C:505:MET:CE	1:C:545:PHE:HB2	2.50	0.40
1:C:439:LYS:O	1:C:443:GLU:HG2	2.22	0.40
1:C:456:TYR:OH	1:C:459:GLU:HB2	2.21	0.40
1:D:180:HIS:O	1:D:184:GLU:HG2	2.20	0.40
1:D:456:TYR:OH	1:D:459:GLU:HB2	2.20	0.40
1:B:337:PHE:CD2	1:B:352:ARG:HD2	2.56	0.40
1:A:142:GLN:O	1:A:145:ARG:HG3	2.21	0.40
1:B:120:ASP:CG	1:B:318:ARG:HH22	2.25	0.40
1:B:155:TYR:O	1:B:451:ARG:NH1	2.49	0.40
1:A:220:ARG:NH2	1:A:500:VAL:O	2.54	0.40
1:D:285:TRP:HA	1:D:286:PRO:HD3	1.82	0.40
1:B:182:LEU:HD22	1:B:339:ARG:HA	2.04	0.40

There are no symmetry-related clashes.

5.3 Torsion angles ⓘ

5.3.1 Protein backbone ⓘ

In the following table, the Percentiles column shows the percent Ramachandran outliers of the chain as a percentile score with respect to all X-ray entries followed by that with respect to entries of similar resolution.

The Analysed column shows the number of residues for which the backbone conformation was analysed, and the total number of residues.

Mol	Chain	Analysed	Favoured	Allowed	Outliers	Percentiles	
1	A	451/526 (86%)	436 (97%)	15 (3%)	0	100	100
1	B	441/526 (84%)	425 (96%)	15 (3%)	1 (0%)	52	75
1	C	439/526 (84%)	414 (94%)	23 (5%)	2 (0%)	34	58
1	D	429/526 (82%)	408 (95%)	19 (4%)	2 (0%)	34	58
All	All	1760/2104 (84%)	1683 (96%)	72 (4%)	5 (0%)	46	70

All (5) Ramachandran outliers are listed below:

Mol	Chain	Res	Type
1	B	490	ASP
1	C	582	GLN
1	D	490	ASP
1	C	547	GLU
1	D	525	ALA

5.3.2 Protein sidechains ⓘ

In the following table, the Percentiles column shows the percent sidechain outliers of the chain as a percentile score with respect to all X-ray entries followed by that with respect to entries of similar resolution.

The Analysed column shows the number of residues for which the sidechain conformation was analysed, and the total number of residues.

Mol	Chain	Analysed	Rotameric	Outliers	Percentiles	
1	A	376/470 (80%)	371 (99%)	5 (1%)	76	91
1	B	366/470 (78%)	362 (99%)	4 (1%)	80	93
1	C	370/470 (79%)	361 (98%)	9 (2%)	57	80
1	D	357/470 (76%)	351 (98%)	6 (2%)	68	87
All	All	1469/1880 (78%)	1445 (98%)	24 (2%)	70	88

All (24) residues with a non-rotameric sidechain are listed below:

Mol	Chain	Res	Type
1	A	138	THR
1	A	232	THR
1	A	434	THR
1	A	451	ARG
1	A	471	GLU
1	B	138	THR
1	B	426	ILE
1	B	463	THR
1	B	505	MET
1	C	118	ILE
1	C	138	THR
1	C	232	THR
1	C	326	GLN
1	C	368	SER
1	C	371	ARG
1	C	383	ASP
1	C	434	THR
1	C	559	ARG
1	D	138	THR
1	D	232	THR
1	D	411	THR
1	D	447	GLN
1	D	557	VAL
1	D	576	ARG

Some sidechains can be flipped to improve hydrogen bonding and reduce clashes. All (6) such sidechains are listed below:

Mol	Chain	Res	Type
1	C	375	GLN
1	C	548	GLN
1	D	328	ASN
1	D	364	HIS
1	D	425	ASN
1	D	447	GLN

5.3.3 RNA ⓘ

There are no RNA molecules in this entry.

5.4 Non-standard residues in protein, DNA, RNA chains ⓘ

There are no non-standard protein/DNA/RNA residues in this entry.

5.5 Carbohydrates ⓘ

There are no carbohydrates in this entry.

5.6 Ligand geometry ⓘ

Of 7 ligands modelled in this entry, 4 are monoatomic - leaving 3 for Mogul analysis.

In the following table, the Counts columns list the number of bonds (or angles) for which Mogul statistics could be retrieved, the number of bonds (or angles) that are observed in the model and the number of bonds (or angles) that are defined in the chemical component dictionary. The Link column lists molecule types, if any, to which the group is linked. The Z score for a bond length (or angle) is the number of standard deviations the observed value is removed from the expected value. A bond length (or angle) with $|Z| > 2$ is considered an outlier worth inspection. RMSZ is the root-mean-square of all Z scores of the bond lengths (or angles).

Mol	Type	Chain	Res	Link	Bond lengths			Bond angles		
					Counts	RMSZ	# $ Z > 2$	Counts	RMSZ	# $ Z > 2$
3	GTP	A	902	-	25,34,34	3.56	10 (40%)	34,54,54	1.62	7 (20%)
3	GTP	B	902	-	25,34,34	3.59	11 (44%)	34,54,54	2.04	8 (23%)
3	GTP	C	902	-	25,34,34	3.53	10 (40%)	34,54,54	1.67	7 (20%)

In the following table, the Chirals column lists the number of chiral outliers, the number of chiral centers analysed, the number of these observed in the model and the number defined in the chemical component dictionary. Similar counts are reported in the Torsion and Rings columns. '-' means no outliers of that kind were identified.

Mol	Type	Chain	Res	Link	Chirals	Torsions	Rings
3	GTP	A	902	-	-	0/18/38/38	0/3/3/3
3	GTP	B	902	-	-	0/18/38/38	0/3/3/3
3	GTP	C	902	-	-	0/18/38/38	0/3/3/3

All (31) bond length outliers are listed below:

Mol	Chain	Res	Type	Atoms	Z	Observed(Å)	Ideal(Å)
3	C	902	GTP	C3'-C4'	-8.20	1.30	1.53
3	B	902	GTP	C3'-C4'	-8.07	1.31	1.53
3	A	902	GTP	C3'-C4'	-7.85	1.31	1.53
3	C	902	GTP	O4'-C1'	-7.16	1.32	1.41

Continued on next page...

Continued from previous page...

Mol	Chain	Res	Type	Atoms	Z	Observed(Å)	Ideal(Å)
3	B	902	GTP	O4'-C1'	-7.08	1.32	1.41
3	A	902	GTP	O4'-C1'	-6.36	1.33	1.41
3	B	902	GTP	O2'-C2'	-2.70	1.36	1.43
3	A	902	GTP	O2'-C2'	-2.48	1.37	1.43
3	C	902	GTP	O2'-C2'	-2.22	1.37	1.43
3	B	902	GTP	C2-N3	2.07	1.46	1.35
3	A	902	GTP	O3'-C3'	3.27	1.50	1.43
3	C	902	GTP	C6-N1	3.50	1.39	1.33
3	B	902	GTP	O3'-C3'	3.61	1.51	1.43
3	C	902	GTP	O3'-C3'	3.87	1.52	1.43
3	B	902	GTP	C2-N1	3.88	1.42	1.35
3	B	902	GTP	C6-N1	3.90	1.40	1.33
3	C	902	GTP	C2-N1	3.92	1.42	1.35
3	C	902	GTP	C2-N2	4.14	1.42	1.34
3	A	902	GTP	C6-N1	4.31	1.41	1.33
3	A	902	GTP	C2-N1	4.57	1.43	1.35
3	A	902	GTP	C2-N2	4.67	1.43	1.34
3	B	902	GTP	C2-N2	4.96	1.44	1.34
3	A	902	GTP	C6-C5	4.97	1.51	1.41
3	C	902	GTP	C6-C5	5.42	1.52	1.41
3	B	902	GTP	C6-C5	5.58	1.52	1.41
3	B	902	GTP	C4-N3	6.62	1.46	1.35
3	C	902	GTP	C4-N3	6.66	1.46	1.35
3	C	902	GTP	O4'-C4'	6.80	1.60	1.45
3	B	902	GTP	O4'-C4'	6.81	1.60	1.45
3	A	902	GTP	C4-N3	7.08	1.46	1.35
3	A	902	GTP	O4'-C4'	7.20	1.61	1.45

All (22) bond angle outliers are listed below:

Mol	Chain	Res	Type	Atoms	Z	Observed(°)	Ideal(°)
3	B	902	GTP	N3-C2-N1	-5.06	119.73	127.44
3	C	902	GTP	N3-C2-N1	-4.85	120.06	127.44
3	A	902	GTP	N3-C2-N1	-4.53	120.54	127.44
3	B	902	GTP	C5-C6-N1	-4.16	117.90	123.59
3	A	902	GTP	C5-C6-N1	-3.22	119.18	123.59
3	C	902	GTP	C5-C6-N1	-2.51	120.16	123.59
3	C	902	GTP	C4-C5-N7	-2.22	107.44	109.48
3	B	902	GTP	C2'-C3'-C4'	2.05	106.82	102.61
3	A	902	GTP	C2'-C1'-N9	2.28	117.77	114.29
3	A	902	GTP	C1'-N9-C4	2.35	130.48	126.94
3	A	902	GTP	C2'-C3'-C4'	2.41	107.56	102.61

Continued on next page...

Continued from previous page...

Mol	Chain	Res	Type	Atoms	Z	Observed(°)	Ideal(°)
3	B	902	GTP	N2-C2-N3	2.41	122.43	117.80
3	C	902	GTP	C1'-N9-C4	2.43	130.61	126.94
3	B	902	GTP	O3A-PA-O5'	2.51	109.59	102.94
3	C	902	GTP	C6-N1-C2	2.79	119.81	115.94
3	A	902	GTP	C6-N1-C2	2.94	120.02	115.94
3	A	902	GTP	O3A-PA-O5'	3.25	111.55	102.94
3	C	902	GTP	C2'-C1'-N9	3.47	119.60	114.29
3	C	902	GTP	O3A-PA-O5'	3.52	112.27	102.94
3	B	902	GTP	C6-N1-C2	3.55	120.87	115.94
3	B	902	GTP	C1'-N9-C4	4.76	134.12	126.94
3	B	902	GTP	C2'-C1'-N9	5.01	121.95	114.29

There are no chirality outliers.

There are no torsion outliers.

There are no ring outliers.

3 monomers are involved in 19 short contacts:

Mol	Chain	Res	Type	Clashes	Symm-Clashes
3	A	902	GTP	2	0
3	B	902	GTP	9	0
3	C	902	GTP	8	0

5.7 Other polymers [i](#)

There are no such residues in this entry.

5.8 Polymer linkage issues [i](#)

There are no chain breaks in this entry.

6 Fit of model and data ⓘ

6.1 Protein, DNA and RNA chains ⓘ

In the following table, the column labelled ‘#RSRZ> 2’ contains the number (and percentage) of RSRZ outliers, followed by percent RSRZ outliers for the chain as percentile scores relative to all X-ray entries and entries of similar resolution. The OWAB column contains the minimum, median, 95th percentile and maximum values of the occupancy-weighted average B-factor per residue. The column labelled ‘Q< 0.9’ lists the number of (and percentage) of residues with an average occupancy less than 0.9.

Mol	Chain	Analysed	<RSRZ>	#RSRZ>2	OWAB(Å ²)	Q<0.9
1	A	459/526 (87%)	-0.20	7 (1%) 76 73	29, 46, 76, 106	0
1	B	449/526 (85%)	0.17	33 (7%) 18 14	31, 48, 91, 114	0
1	C	447/526 (84%)	-0.05	15 (3%) 49 43	35, 51, 79, 99	0
1	D	439/526 (83%)	0.15	19 (4%) 39 33	34, 51, 84, 93	0
All	All	1794/2104 (85%)	0.02	74 (4%) 41 36	29, 49, 83, 114	0

All (74) RSRZ outliers are listed below:

Mol	Chain	Res	Type	RSRZ
1	B	584	GLY	7.4
1	B	524	THR	5.8
1	B	583	ASP	5.5
1	B	582	GLN	5.5
1	C	532	ILE	5.4
1	D	546	ALA	5.2
1	B	522	CYS	5.2
1	B	523	LYS	4.7
1	A	279	PRO	4.6
1	C	545	PHE	4.6
1	B	531	ARG	4.6
1	C	531	ARG	4.5
1	B	276	LEU	4.4
1	A	278	SER	4.4
1	B	279	PRO	4.3
1	B	545	PHE	4.2
1	B	525	ALA	4.1
1	D	522	CYS	4.0
1	B	546	ALA	3.9
1	B	278	SER	3.8
1	B	532	ILE	3.7

Continued on next page...

Continued from previous page...

Mol	Chain	Res	Type	RSRZ
1	B	527	ASN	3.5
1	D	328	ASN	3.5
1	B	463	THR	3.5
1	B	283	SER	3.5
1	B	277	GLU	3.4
1	B	530	ILE	3.3
1	C	278	SER	3.1
1	D	547	GLU	3.1
1	B	282	ASP	3.1
1	A	276	LEU	2.9
1	B	346	GLU	2.9
1	D	527	ASN	2.9
1	B	115	MET	2.8
1	B	341	CYS	2.8
1	D	487	VAL	2.8
1	C	546	ALA	2.7
1	A	531	ARG	2.7
1	D	524	THR	2.7
1	D	528	ARG	2.6
1	B	284	LEU	2.6
1	C	462	PRO	2.6
1	B	487	VAL	2.6
1	B	489	LEU	2.5
1	C	466	ILE	2.5
1	D	529	ALA	2.5
1	D	490	ASP	2.5
1	C	464	GLY	2.5
1	D	517	HIS	2.5
1	C	530	ILE	2.5
1	A	545	PHE	2.4
1	D	277	GLU	2.4
1	B	529	ALA	2.4
1	B	329	PHE	2.4
1	D	285	TRP	2.4
1	B	307	GLY	2.4
1	D	465	GLN	2.3
1	B	352	ARG	2.3
1	D	363	PHE	2.3
1	B	526	PRO	2.3
1	D	488	LEU	2.3
1	B	465	GLN	2.2
1	D	115	MET	2.2

Continued on next page...

Continued from previous page...

Mol	Chain	Res	Type	RSRZ
1	A	283	SER	2.2
1	C	463	THR	2.2
1	C	266	TYR	2.2
1	C	184	GLU	2.1
1	A	277	GLU	2.1
1	C	114	THR	2.1
1	C	524	THR	2.1
1	B	547	GLU	2.1
1	D	530	ILE	2.1
1	D	489	LEU	2.0
1	C	491	VAL	2.0

6.2 Non-standard residues in protein, DNA, RNA chains [i](#)

There are no non-standard protein/DNA/RNA residues in this entry.

6.3 Carbohydrates [i](#)

There are no carbohydrates in this entry.

6.4 Ligands [i](#)

In the following table, the Atoms column lists the number of modelled atoms in the group and the number defined in the chemical component dictionary. LLDF column lists the quality of electron density of the group with respect to its neighbouring residues in protein, DNA or RNA chains. The B-factors column lists the minimum, median, 95th percentile and maximum values of B factors of atoms in the group. The column labelled 'Q< 0.9' lists the number of atoms with occupancy less than 0.9.

Mol	Type	Chain	Res	Atoms	RSCC	RSR	LLDF	B-factors(Å ²)	Q<0.9
3	GTP	C	902	32/32	0.76	0.41	10.29	54,71,109,117	0
3	GTP	A	902	32/32	0.73	0.40	8.57	53,80,148,151	0
3	GTP	B	902	32/32	0.82	0.38	7.11	48,71,103,119	0
2	ZN	A	901	1/1	0.99	0.15	0.54	34,34,34,34	0
2	ZN	C	901	1/1	0.98	0.16	0.07	42,42,42,42	0
2	ZN	B	901	1/1	0.99	0.14	-0.64	39,39,39,39	0
2	ZN	D	901	1/1	0.99	0.15	-0.83	39,39,39,39	0

6.5 Other polymers [i](#)

There are no such residues in this entry.