



# Full wwPDB X-ray Structure Validation Report ⓘ

Feb 1, 2016 – 11:54 AM GMT

PDB ID : 3Q8D  
Title : E. coli RecO complex with SSB C-terminus  
Authors : Koroleva, O.; Ryzhikov, M.; Korolev, S.  
Deposited on : 2011-01-06  
Resolution : 2.30 Å(reported)

This is a Full wwPDB X-ray Structure Validation Report for a publicly released PDB entry.  
We welcome your comments at [validation@mail.wwpdb.org](mailto:validation@mail.wwpdb.org)  
A user guide is available at  
<http://wwpdb.org/validation/2016/XrayValidationReportHelp>  
with specific help available everywhere you see the ⓘ symbol.

---

The following versions of software and data (see [references ⓘ](#)) were used in the production of this report:

MolProbity : 4.02b-467  
Mogul : 1.7 (RC4), CSD as536be (2015)  
Xtriage (Phenix) : 1.9-1692  
EDS : rb-20026688  
Percentile statistics : 20151230.v01 (using entries in the PDB archive December 30th 2015)  
Refmac : 5.8.0135  
CCP4 : 6.5.0  
Ideal geometry (proteins) : Engh & Huber (2001)  
Ideal geometry (DNA, RNA) : Parkinson et al. (1996)  
Validation Pipeline (wwPDB-VP) : trunk26865

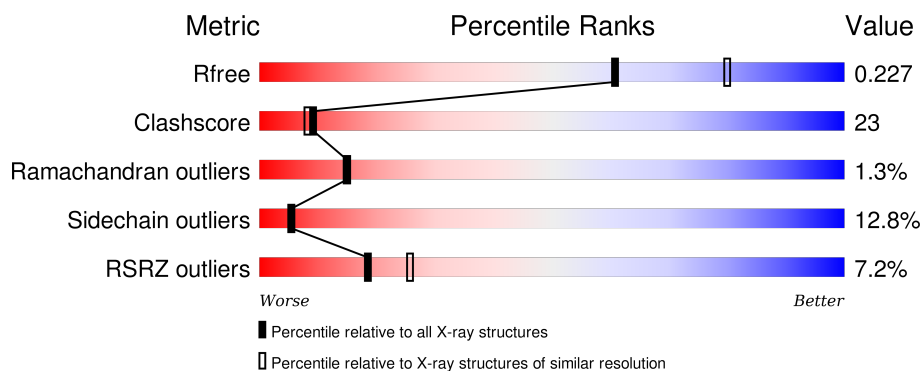
# 1 Overall quality at a glance ⓘ

The following experimental techniques were used to determine the structure:

## *X-RAY DIFFRACTION*

The reported resolution of this entry is 2.30 Å.

Percentile scores (ranging between 0-100) for global validation metrics of the entry are shown in the following graphic. The table shows the number of entries on which the scores are based.



Metric	Whole archive (#Entries)	Similar resolution (#Entries, resolution range(Å))
$R_{free}$	91344	3852 (2.30-2.30)
Clashscore	102246	4452 (2.30-2.30)
Ramachandran outliers	100387	4410 (2.30-2.30)
Sidechain outliers	100360	4409 (2.30-2.30)
RSRZ outliers	91569	3857 (2.30-2.30)

The table below summarises the geometric issues observed across the polymeric chains and their fit to the electron density. The red, orange, yellow and green segments on the lower bar indicate the fraction of residues that contain outliers for  $\geq 3$ , 2, 1 and 0 types of geometric quality criteria. A grey segment represents the fraction of residues that are not modelled. The numeric value for each fraction is indicated below the corresponding segment, with a dot representing fractions  $\leq 5\%$ . The upper red bar (where present) indicates the fraction of residues that have poor fit to the electron density. The numeric value is given above the bar.

Mol	Chain	Length	Quality of chain
1	A	242	<div> <div>8%</div> <div>60%</div> <div>28%</div> <div>7%</div> <div>5%</div> </div>
1	B	242	<div> <div>5%</div> <div>69%</div> <div>21%</div> <div>5%</div> <div>.</div> </div>
2	E	10	<div> <div>20%</div> <div>20%</div> <div>10%</div> <div>70%</div> </div>
2	F	10	<div> <div>10%</div> <div>10%</div> <div>10%</div> <div>70%</div> </div>

The following table lists non-polymeric compounds, carbohydrate monomers and non-standard residues in protein, DNA, RNA chains that are outliers for geometric or electron-density-fit crite-

ria:

Mol	Type	Chain	Res	Chirality	Geometry	Clashes	Electron density
3	MLT	A	700	-	-	-	X
4	GOL	A	800	-	-	X	X

## 2 Entry composition

There are 6 unique types of molecules in this entry. The entry contains 3988 atoms, of which 0 are hydrogens and 0 are deuteriums.

In the tables below, the ZeroOcc column contains the number of atoms modelled with zero occupancy, the AltConf column contains the number of residues with at least one atom in alternate conformation and the Trace column contains the number of residues modelled with at most 2 atoms.

- Molecule 1 is a protein called DNA repair protein recO.

Mol	Chain	Residues	Atoms					ZeroOcc	AltConf	Trace
1	A	231	Total	C	N	O	S	0	0	0
			1828	1170	326	326	6			
1	B	232	Total	C	N	O	S	0	0	0
			1843	1180	328	329	6			

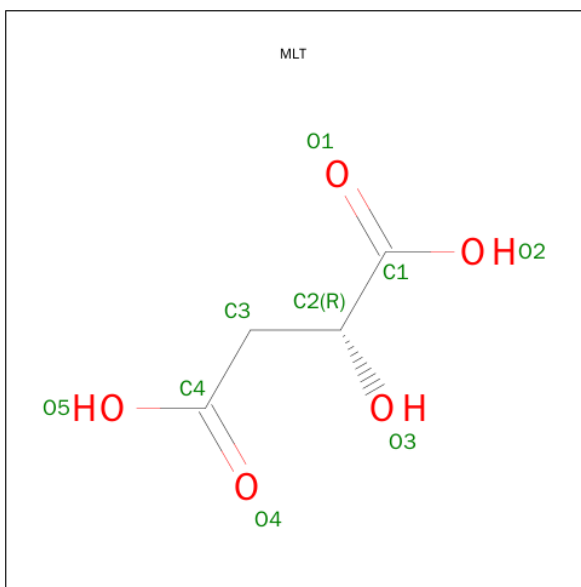
- Molecule 2 is a protein called Single-stranded DNA-binding protein.

Mol	Chain	Residues	Atoms				ZeroOcc	AltConf	Trace
2	E	3	Total	C	N	O	0	0	0
			27	20	3	4			
2	F	3	Total	C	N	O	0	0	0
			27	20	3	4			

There are 2 discrepancies between the modelled and reference sequences:

Chain	Residue	Modelled	Actual	Comment	Reference
E	0	TYR	-	EXPRESSION TAG	UNP D5D6S3
F	0	TYR	-	EXPRESSION TAG	UNP D5D6S3

- Molecule 3 is D-MALATE (three-letter code: MLT) (formula: C<sub>4</sub>H<sub>6</sub>O<sub>5</sub>).



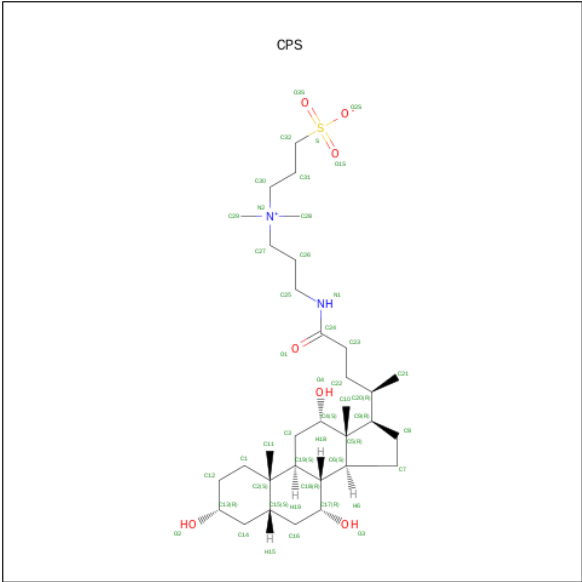
Mol	Chain	Residues	Atoms			ZeroOcc	AltConf
3	A	1	Total	C	O	0	0
			9	4	5		

- Molecule 4 is GLYCEROL (three-letter code: GOL) (formula:  $C_3H_8O_3$ ).



Mol	Chain	Residues	Atoms			ZeroOcc	AltConf
4	A	1	Total	C	O	0	0
			6	3	3		

- Molecule 5 is 3-[(3-CHOLAMIDOPROPYL)DIMETHYLAMMONIO]-1-PROPANESULFO NATE (three-letter code: CPS) (formula:  $C_{32}H_{58}N_2O_7S$ ).



Mol	Chain	Residues	Atoms					ZeroOcc	AltConf
5	B	1	Total	C	N	O	S	0	0
			42	32	2	7	1		

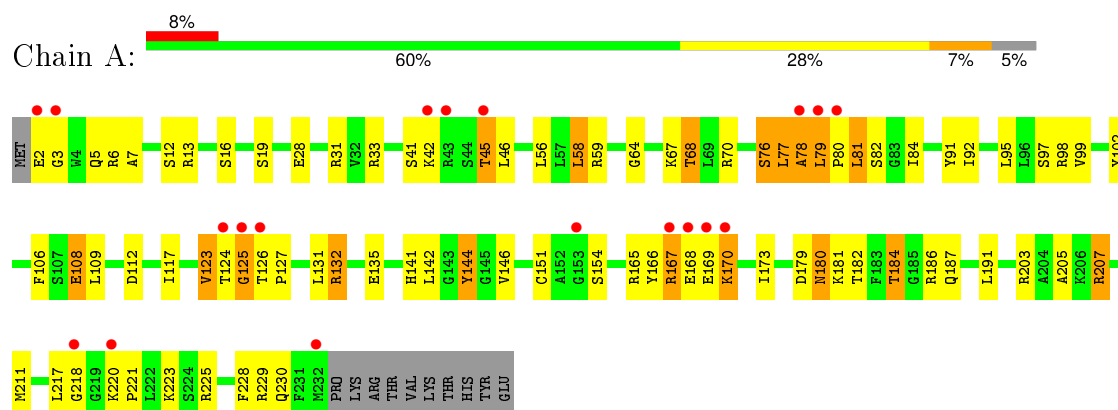
- Molecule 6 is water.

Mol	Chain	Residues	Atoms		ZeroOcc	AltConf
6	A	107	Total	O	0	0
			107	107		
6	B	96	Total	O	0	0
			96	96		
6	E	2	Total	O	0	0
			2	2		
6	F	1	Total	O	0	0
			1	1		

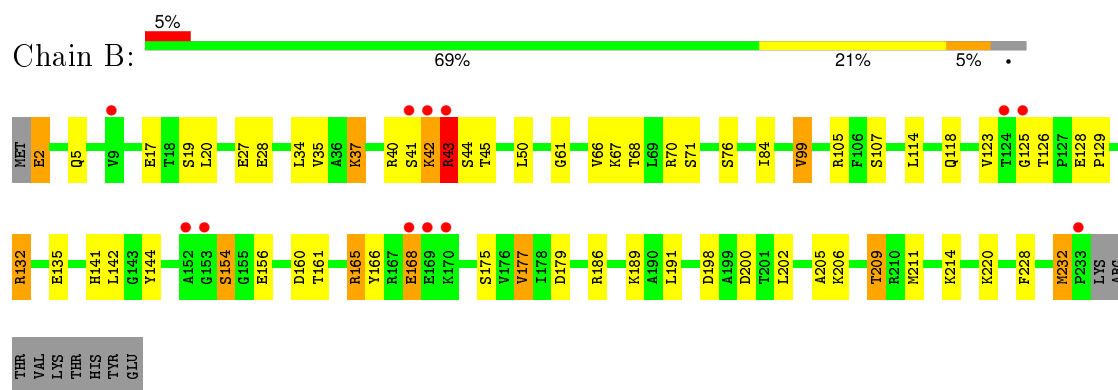
### 3 Residue-property plots [i](#)

These plots are drawn for all protein, RNA and DNA chains in the entry. The first graphic for a chain summarises the proportions of errors displayed in the second graphic. The second graphic shows the sequence view annotated by issues in geometry and electron density. Residues are color-coded according to the number of geometric quality criteria for which they contain at least one outlier: green = 0, yellow = 1, orange = 2 and red = 3 or more. A red dot above a residue indicates a poor fit to the electron density ( $RSRZ > 2$ ). Stretches of 2 or more consecutive residues without any outlier are shown as a green connector. Residues present in the sample, but not in the model, are shown in grey.

- Molecule 1: DNA repair protein recO



- Molecule 1: DNA repair protein recO



- Molecule 2: Single-stranded DNA-binding protein



- Molecule 2: Single-stranded DNA-binding protein







## 4 Data and refinement statistics

Property	Value	Source
Space group	I 2 2 2	Depositor
Cell constants a, b, c, $\alpha$ , $\beta$ , $\gamma$	100.20Å 118.57Å 145.12Å 90.00° 90.00° 90.00°	Depositor
Resolution (Å)	40.00 – 2.30 38.27 – 2.30	Depositor EDS
% Data completeness (in resolution range)	93.9 (40.00-2.30) 92.5 (38.27-2.30)	Depositor EDS
$R_{merge}$	0.06	Depositor
$R_{sym}$	(Not available)	Depositor
$\langle I/\sigma(I) \rangle$ <sup>1</sup>	2.17 (at 2.29Å)	Xtriage
Refinement program	REFMAC 5.5.0109	Depositor
R, $R_{free}$	0.195 , 0.234 0.189 , 0.227	Depositor DCC
$R_{free}$ test set	1867 reflections (5.50%)	DCC
Wilson B-factor (Å <sup>2</sup> )	43.6	Xtriage
Anisotropy	0.170	Xtriage
Bulk solvent $k_{sol}$ (e/Å <sup>3</sup> ), $B_{sol}$ (Å <sup>2</sup> )	0.36 , 55.5	EDS
Estimated twinning fraction	No twinning to report.	Xtriage
L-test for twinning <sup>2</sup>	$\langle  L  \rangle = 0.48$ , $\langle L^2 \rangle = 0.32$	Xtriage
Outliers	0 of 35816 reflections	Xtriage
$F_o, F_c$ correlation	0.96	EDS
Total number of atoms	3988	wwPDB-VP
Average B, all atoms (Å <sup>2</sup> )	47.0	wwPDB-VP

Xtriage's analysis on translational NCS is as follows: *The largest off-origin peak in the Patterson function is 4.15% of the height of the origin peak. No significant pseudotranslation is detected.*

<sup>1</sup>Intensities estimated from amplitudes.

<sup>2</sup>Theoretical values of  $\langle |L| \rangle$ ,  $\langle L^2 \rangle$  for acentric reflections are 0.5, 0.375 respectively for untwinned datasets, and 0.333, 0.2 for perfectly twinned datasets.

## 5 Model quality [i](#)

### 5.1 Standard geometry [i](#)

Bond lengths and bond angles in the following residue types are not validated in this section: GOL, CPS, MLT

The Z score for a bond length (or angle) is the number of standard deviations the observed value is removed from the expected value. A bond length (or angle) with  $|Z| > 5$  is considered an outlier worth inspection. RMSZ is the root-mean-square of all Z scores of the bond lengths (or angles).

Mol	Chain	Bond lengths		Bond angles	
		RMSZ	$\# Z  > 5$	RMSZ	$\# Z  > 5$
1	A	0.35	0/1868	0.51	0/2520
1	B	0.34	0/1884	0.49	0/2541
2	E	0.50	0/28	0.49	0/36
2	F	0.52	0/28	0.50	0/36
All	All	0.35	0/3808	0.50	0/5133

Chiral center outliers are detected by calculating the chiral volume of a chiral center and verifying if the center is modelled as a planar moiety or with the opposite hand. A planarity outlier is detected by checking planarity of atoms in a peptide group, atoms in a mainchain group or atoms of a sidechain that are expected to be planar.

Mol	Chain	#Chirality outliers	#Planarity outliers
1	A	0	4
2	E	0	1
2	F	0	1
All	All	0	6

There are no bond length outliers.

There are no bond angle outliers.

There are no chirality outliers.

All (6) planarity outliers are listed below:

Mol	Chain	Res	Type	Group
1	A	123	VAL	Peptide
1	A	207	ARG	Sidechain
1	A	217	LEU	Peptide
1	A	78	ALA	Peptide
2	E	8	PRO	Peptide
2	F	8	PRO	Peptide

## 5.2 Too-close contacts ⓘ

In the following table, the Non-H and H(model) columns list the number of non-hydrogen atoms and hydrogen atoms in the chain respectively. The H(added) column lists the number of hydrogen atoms added and optimized by MolProbity. The Clashes column lists the number of clashes within the asymmetric unit, whereas Symm-Clashes lists symmetry related clashes.

Mol	Chain	Non-H	H(model)	H(added)	Clashes	Symm-Clashes
1	A	1828	0	1846	86	0
1	B	1843	0	1868	60	0
2	E	27	0	26	12	0
2	F	27	0	26	17	0
3	A	9	0	4	0	0
4	A	6	0	8	7	0
5	B	42	0	58	1	0
6	A	107	0	0	16	0
6	B	96	0	0	11	0
6	E	2	0	0	4	0
6	F	1	0	0	1	0
All	All	3988	0	3836	175	0

The all-atom clashscore is defined as the number of clashes found per 1000 atoms (including hydrogen atoms). The all-atom clashscore for this structure is 23.

All (175) close contacts within the same asymmetric unit are listed below, sorted by their clash magnitude.

Atom-1	Atom-2	Interatomic distance (Å)	Clash overlap (Å)
2:F:8:PRO:HG2	2:F:9:PHE:CB	1.68	1.21
2:F:8:PRO:CG	2:F:9:PHE:HB3	1.70	1.21
1:B:2:GLU:CB	6:B:311:HOH:O	1.92	1.15
1:B:2:GLU:HB3	6:B:311:HOH:O	1.43	1.13
1:A:45:THR:HG22	6:A:329:HOH:O	1.50	1.10
1:A:80:PRO:O	1:A:81:LEU:HD13	1.62	0.99
2:F:9:PHE:CD1	2:F:9:PHE:C	2.31	0.97
2:F:8:PRO:HG2	2:F:9:PHE:HB3	0.95	0.95
2:F:9:PHE:C	2:F:9:PHE:HD1	1.70	0.94
2:E:9:PHE:HB2	6:E:188:HOH:O	1.69	0.92
1:A:45:THR:HA	6:A:256:HOH:O	1.67	0.91
1:A:80:PRO:O	1:A:81:LEU:CD1	2.20	0.90
2:E:9:PHE:CD1	2:E:9:PHE:O	2.26	0.89
1:B:135:GLU:OE1	1:B:209:THR:HG21	1.72	0.89
1:A:2:GLU:CB	6:A:322:HOH:O	2.20	0.88
1:B:41:SER:N	1:B:42:LYS:HA	1.87	0.88

*Continued on next page...*

*Continued from previous page...*

Atom-1	Atom-2	Interatomic distance (Å)	Clash overlap (Å)
1:A:184:THR:HG22	1:A:187:GLN:H	1.40	0.87
1:A:167:ARG:HB2	1:A:170:LYS:HB3	1.61	0.80
2:F:9:PHE:OXT	2:F:9:PHE:CD1	2.34	0.79
1:A:108:GLU:CD	1:A:108:GLU:H	1.90	0.75
1:A:112:ASP:OD2	1:A:141:HIS:HE1	1.69	0.75
1:A:7:ALA:HB3	1:A:58:LEU:HD22	1.69	0.74
1:A:78:ALA:HB1	1:A:80:PRO:HD3	1.68	0.74
1:A:167:ARG:HE	1:A:173:ILE:HG12	1.53	0.74
1:A:80:PRO:O	1:A:81:LEU:HB2	1.86	0.73
1:B:42:LYS:NZ	1:B:42:LYS:HB3	2.04	0.73
2:F:8:PRO:CG	2:F:9:PHE:CB	2.49	0.71
1:B:99:VAL:HG13	1:B:142:LEU:HD21	1.72	0.71
1:B:42:LYS:HZ2	1:B:42:LYS:HB3	1.55	0.71
1:A:124:THR:O	1:A:125:GLY:O	2.07	0.71
1:A:230:GLN:HG3	1:A:230:GLN:O	1.89	0.71
1:B:168:GLU:HB2	6:B:314:HOH:O	1.91	0.71
1:A:166:TYR:HD2	1:A:211:MET:CE	2.03	0.71
1:A:59:ARG:CZ	6:A:304:HOH:O	2.39	0.70
1:A:80:PRO:O	1:A:81:LEU:CB	2.39	0.69
1:B:154:SER:OG	1:B:156:GLU:HB2	1.92	0.69
1:B:41:SER:HB2	1:B:42:LYS:O	1.93	0.68
2:E:9:PHE:CD1	6:E:188:HOH:O	2.47	0.67
1:A:166:TYR:CD2	1:A:211:MET:CE	2.77	0.67
1:B:2:GLU:HB2	6:B:311:HOH:O	1.70	0.67
1:A:16:SER:OG	4:A:800:GOL:O1	2.13	0.67
1:A:68:THR:HG22	6:A:283:HOH:O	1.94	0.67
1:A:19:SER:HB2	4:A:800:GOL:H11	1.77	0.66
2:E:8:PRO:HG2	2:E:9:PHE:H	1.60	0.66
1:A:151:CYS:SG	6:A:330:HOH:O	2.41	0.66
1:A:223:LYS:CB	6:A:311:HOH:O	2.44	0.65
1:A:99:VAL:HG13	1:A:142:LEU:HD21	1.78	0.65
1:A:16:SER:HG	4:A:800:GOL:HO1	1.44	0.65
1:A:182:THR:O	1:A:207:ARG:NH2	2.30	0.65
1:B:166:TYR:CD2	1:B:211:MET:HE3	2.32	0.64
1:B:209:THR:HG22	6:B:263:HOH:O	1.97	0.64
1:A:64:GLY:N	6:A:323:HOH:O	2.14	0.64
1:B:228:PHE:O	1:B:232:MET:HB2	1.99	0.63
1:A:132:ARG:HD3	1:A:135:GLU:OE1	1.98	0.63
1:A:166:TYR:HD2	1:A:211:MET:HE3	1.63	0.63
2:F:8:PRO:HG2	2:F:9:PHE:HB2	1.76	0.62
1:B:5:GLN:HE21	1:B:28:GLU:HB2	1.64	0.62

*Continued on next page...*

*Continued from previous page...*

Atom-1	Atom-2	Interatomic distance (Å)	Clash overlap (Å)
1:B:191:LEU:HD21	1:B:205:ALA:HA	1.80	0.62
1:B:84:ILE:HB	1:B:232:MET:HE1	1.82	0.62
2:F:8:PRO:CD	2:F:9:PHE:HB3	2.28	0.61
1:A:76:SER:HB2	1:A:78:ALA:HB2	1.81	0.61
2:E:7:ILE:N	6:E:192:HOH:O	2.33	0.60
1:A:45:THR:CA	6:A:256:HOH:O	2.37	0.60
2:E:9:PHE:O	2:E:9:PHE:HD1	1.83	0.60
1:A:95:LEU:O	1:A:99:VAL:HB	2.02	0.60
1:B:42:LYS:HG3	1:B:44:SER:H	1.67	0.60
1:B:84:ILE:HB	1:B:232:MET:CE	2.32	0.59
1:A:168:GLU:O	1:A:169:GLU:HB2	2.01	0.59
1:A:7:ALA:CB	1:A:58:LEU:HD22	2.33	0.59
1:B:175:SER:OG	1:B:177:VAL:HG13	2.03	0.59
1:A:59:ARG:NE	6:A:304:HOH:O	2.35	0.59
1:A:77:LEU:HB2	6:A:327:HOH:O	2.03	0.58
2:E:7:ILE:N	2:E:8:PRO:CD	2.66	0.58
1:A:79:LEU:HD12	1:A:79:LEU:C	2.23	0.58
1:B:35:VAL:HG23	1:B:66:VAL:CG1	2.33	0.58
1:A:180:ASN:HD22	1:A:180:ASN:N	2.02	0.57
1:A:16:SER:OG	4:A:800:GOL:C1	2.53	0.57
1:B:209:THR:CG2	6:B:263:HOH:O	2.52	0.57
1:B:42:LYS:HB2	1:B:44:SER:HB2	1.87	0.57
2:E:9:PHE:HD1	6:E:188:HOH:O	1.87	0.56
1:B:41:SER:HB2	1:B:42:LYS:C	2.26	0.56
1:A:167:ARG:HB2	1:A:170:LYS:CB	2.35	0.55
1:A:167:ARG:NE	1:A:173:ILE:HG12	2.21	0.55
1:A:98:ARG:NH2	1:A:221:PRO:O	2.40	0.55
6:A:289:HOH:O	1:B:161:THR:HG23	2.05	0.55
1:B:165:ARG:NH1	1:B:179:ASP:OD2	2.40	0.54
1:A:184:THR:HG22	1:A:187:GLN:N	2.18	0.54
1:A:112:ASP:OD2	1:A:141:HIS:CE1	2.56	0.54
1:A:2:GLU:CB	1:A:3:GLY:HA3	2.38	0.54
1:A:2:GLU:CB	1:A:3:GLY:CA	2.86	0.54
2:F:9:PHE:O	2:F:9:PHE:HD1	1.90	0.53
1:A:165:ARG:NH1	1:A:179:ASP:OD2	2.38	0.53
1:B:198:ASP:OD1	1:B:200:ASP:HB3	2.09	0.53
1:B:160:ASP:OD1	1:B:189:LYS:HE3	2.09	0.52
1:A:78:ALA:CB	1:A:80:PRO:HD3	2.38	0.52
1:B:2:GLU:OE1	1:B:2:GLU:O	2.26	0.52
1:B:42:LYS:HD3	1:B:44:SER:O	2.09	0.52
1:A:5:GLN:NE2	1:A:28:GLU:H	2.08	0.52

*Continued on next page...*

*Continued from previous page...*

Atom-1	Atom-2	Interatomic distance (Å)	Clash overlap (Å)
1:A:16:SER:CB	4:A:800:GOL:H12	2.41	0.51
1:A:184:THR:HG23	1:A:186:ARG:H	1.76	0.51
1:A:167:ARG:HH21	1:A:173:ILE:HD11	1.76	0.50
1:B:99:VAL:HG11	1:B:142:LEU:HD11	1.92	0.50
2:F:8:PRO:HB2	2:F:9:PHE:CA	2.41	0.50
1:B:35:VAL:HG23	1:B:66:VAL:HG12	1.94	0.49
1:A:191:LEU:HD21	1:A:205:ALA:HA	1.94	0.49
1:A:132:ARG:HG3	1:A:205:ALA:HB1	1.94	0.49
1:B:132:ARG:HG3	1:B:205:ALA:HB1	1.95	0.49
1:B:205:ALA:O	1:B:209:THR:HB	2.12	0.49
1:A:166:TYR:CD2	1:A:211:MET:HE3	2.44	0.49
1:A:45:THR:C	6:A:256:HOH:O	2.50	0.49
1:A:59:ARG:CD	6:A:304:HOH:O	2.61	0.49
2:E:8:PRO:CG	2:E:9:PHE:H	2.25	0.48
1:A:180:ASN:HD22	1:A:180:ASN:H	1.60	0.48
5:B:600:CPS:O1S	5:B:600:CPS:H30	2.12	0.48
1:B:114:LEU:O	1:B:118:GLN:HG3	2.14	0.48
2:F:8:PRO:CB	2:F:9:PHE:CB	2.90	0.48
1:A:19:SER:CB	4:A:800:GOL:H11	2.42	0.48
1:B:141:HIS:HE1	6:B:258:HOH:O	1.97	0.48
1:B:40:ARG:C	1:B:42:LYS:HA	2.34	0.47
1:A:16:SER:HB3	4:A:800:GOL:H12	1.96	0.47
1:B:27:GLU:OE2	1:B:107:SER:OG	2.13	0.47
1:B:70:ARG:HD3	6:B:300:HOH:O	2.13	0.47
1:A:5:GLN:HE21	1:A:28:GLU:H	1.61	0.47
1:A:6:ARG:HB3	6:A:341:HOH:O	2.15	0.46
1:B:126:THR:HG23	1:B:129:PRO:CD	2.45	0.46
1:B:34:LEU:HD23	1:B:67:LYS:HB2	1.98	0.46
2:E:8:PRO:CG	2:E:9:PHE:N	2.78	0.46
1:B:166:TYR:HD2	1:B:211:MET:HE3	1.77	0.46
1:B:41:SER:N	1:B:42:LYS:CA	2.68	0.46
1:B:41:SER:HB3	1:B:43:ARG:HG2	1.97	0.46
1:A:84:ILE:HG13	1:A:228:PHE:HE2	1.80	0.46
1:A:167:ARG:CB	1:A:170:LYS:CB	2.94	0.45
1:B:132:ARG:HD3	1:B:132:ARG:HA	1.61	0.45
1:A:12:SER:O	1:A:13:ARG:NH1	2.49	0.45
1:B:76:SER:HB2	6:B:280:HOH:O	2.17	0.45
1:A:144:TYR:CD1	1:A:146:VAL:HG23	2.52	0.45
1:B:161:THR:HG23	6:B:266:HOH:O	2.17	0.44
1:A:2:GLU:CB	1:A:3:GLY:O	2.66	0.44
1:A:108:GLU:N	1:A:108:GLU:CD	2.66	0.44

*Continued on next page...*

*Continued from previous page...*

Atom-1	Atom-2	Interatomic distance (Å)	Clash overlap (Å)
1:A:167:ARG:NH2	1:A:173:ILE:HD11	2.32	0.44
1:A:125:GLY:HA2	1:A:126:THR:HA	1.53	0.44
1:A:203:ARG:HD2	6:A:279:HOH:O	2.18	0.44
2:F:8:PRO:HB2	2:F:9:PHE:HA	2.00	0.44
1:A:132:ARG:CD	1:A:135:GLU:OE1	2.64	0.44
1:A:59:ARG:NH2	1:A:70:ARG:HD3	2.33	0.44
1:A:132:ARG:HA	1:A:132:ARG:HD3	1.56	0.44
1:A:126:THR:OG1	1:A:127:PRO:HD2	2.17	0.44
1:A:106:PHE:HB3	1:A:109:LEU:HB3	1.99	0.44
1:B:42:LYS:C	1:B:43:ARG:HG2	2.37	0.44
1:A:56:LEU:HB3	1:A:58:LEU:HD13	2.00	0.43
1:B:132:ARG:NH2	1:B:206:LYS:HD3	2.33	0.43
1:B:19:SER:OG	1:B:37:LYS:HA	2.19	0.43
1:A:31:ARG:NH1	1:A:97:SER:O	2.50	0.43
1:B:126:THR:HG23	1:B:129:PRO:HD3	2.00	0.43
1:A:225:ARG:HH11	1:A:225:ARG:HG2	1.83	0.43
2:E:9:PHE:O	2:E:9:PHE:CG	2.67	0.43
1:B:125:GLY:N	6:B:331:HOH:O	2.37	0.42
2:F:8:PRO:HB2	2:F:9:PHE:CB	2.49	0.42
1:A:76:SER:C	1:A:78:ALA:N	2.73	0.42
1:B:128:GLU:N	1:B:129:PRO:CD	2.83	0.42
1:A:132:ARG:HH22	2:E:9:PHE:C	2.24	0.41
1:A:186:ARG:HB2	1:A:186:ARG:NH1	2.35	0.41
1:B:35:VAL:HG23	1:B:66:VAL:HG11	2.01	0.41
1:B:166:TYR:CD2	1:B:211:MET:CE	3.01	0.41
1:B:34:LEU:CD2	1:B:67:LYS:HB2	2.50	0.41
1:B:68:THR:O	1:B:70:ARG:NH1	2.54	0.41
1:B:68:THR:HB	1:B:70:ARG:HH12	1.86	0.41
1:A:91:TYR:CD2	1:A:92:ILE:HD13	2.56	0.41
2:F:9:PHE:HB2	6:F:95:HOH:O	2.21	0.40
2:F:8:PRO:CB	2:F:9:PHE:CA	3.00	0.40
1:A:33:ARG:HG3	1:A:102:TYR:CE1	2.56	0.40
1:A:168:GLU:O	1:A:169:GLU:CB	2.69	0.40
1:B:177:VAL:HG22	1:B:177:VAL:O	2.21	0.40
1:B:61:GLY:H	1:B:70:ARG:NH1	2.20	0.40
2:F:9:PHE:OXT	2:F:9:PHE:CG	2.70	0.40

There are no symmetry-related clashes.

## 5.3 Torsion angles

### 5.3.1 Protein backbone

In the following table, the Percentiles column shows the percent Ramachandran outliers of the chain as a percentile score with respect to all X-ray entries followed by that with respect to entries of similar resolution.

The Analysed column shows the number of residues for which the backbone conformation was analysed, and the total number of residues.

Mol	Chain	Analysed	Favoured	Allowed	Outliers	Percentiles	
1	A	229/242 (95%)	214 (93%)	12 (5%)	3 (1%)	15	15
1	B	230/242 (95%)	218 (95%)	11 (5%)	1 (0%)	39	48
2	E	1/10 (10%)	0	0	1 (100%)	0	0
2	F	1/10 (10%)	0	0	1 (100%)	0	0
All	All	461/504 (92%)	432 (94%)	23 (5%)	6 (1%)	15	15

All (6) Ramachandran outliers are listed below:

Mol	Chain	Res	Type
1	A	81	LEU
1	A	125	GLY
2	E	8	PRO
2	F	8	PRO
1	A	218	GLY
1	B	43	ARG

### 5.3.2 Protein sidechains

In the following table, the Percentiles column shows the percent sidechain outliers of the chain as a percentile score with respect to all X-ray entries followed by that with respect to entries of similar resolution.

The Analysed column shows the number of residues for which the sidechain conformation was analysed, and the total number of residues.

Mol	Chain	Analysed	Rotameric	Outliers	Percentiles	
1	A	191/204 (94%)	166 (87%)	25 (13%)	5	5
1	B	194/204 (95%)	170 (88%)	24 (12%)	6	6
2	E	3/10 (30%)	3 (100%)	0	100	100
2	F	3/10 (30%)	2 (67%)	1 (33%)	0	0

*Continued on next page...*



*Continued from previous page...*

Mol	Chain	Analysed	Rotameric	Outliers	Percentiles
All	All	391/428 (91%)	341 (87%)	50 (13%)	<b>5</b> <b>5</b>

All (50) residues with a non-rotameric sidechain are listed below:

Mol	Chain	Res	Type
1	A	41	SER
1	A	42	LYS
1	A	45	THR
1	A	46	LEU
1	A	58	LEU
1	A	67	LYS
1	A	68	THR
1	A	76	SER
1	A	77	LEU
1	A	79	LEU
1	A	82	SER
1	A	108	GLU
1	A	117	ILE
1	A	123	VAL
1	A	131	LEU
1	A	132	ARG
1	A	144	TYR
1	A	154	SER
1	A	167	ARG
1	A	170	LYS
1	A	180	ASN
1	A	181	LYS
1	A	184	THR
1	A	220	LYS
1	A	229	ARG
1	B	2	GLU
1	B	17	GLU
1	B	20	LEU
1	B	37	LYS
1	B	42	LYS
1	B	43	ARG
1	B	45	THR
1	B	50	LEU
1	B	71	SER
1	B	99	VAL
1	B	105	ARG
1	B	123	VAL

*Continued on next page...*

*Continued from previous page...*

Mol	Chain	Res	Type
1	B	132	ARG
1	B	144	TYR
1	B	154	SER
1	B	165	ARG
1	B	168	GLU
1	B	177	VAL
1	B	186	ARG
1	B	202	LEU
1	B	209	THR
1	B	214	LYS
1	B	220	LYS
1	B	232	MET
2	F	9	PHE

Some sidechains can be flipped to improve hydrogen bonding and reduce clashes. All (8) such sidechains are listed below:

Mol	Chain	Res	Type
1	A	5	GLN
1	A	51	GLN
1	A	141	HIS
1	A	150	HIS
1	A	180	ASN
1	B	5	GLN
1	B	150	HIS
1	B	180	ASN

### 5.3.3 RNA ⓘ

There are no RNA molecules in this entry.

## 5.4 Non-standard residues in protein, DNA, RNA chains ⓘ

There are no non-standard protein/DNA/RNA residues in this entry.

## 5.5 Carbohydrates ⓘ

There are no carbohydrates in this entry.

## 5.6 Ligand geometry

3 ligands are modelled in this entry.

In the following table, the Counts columns list the number of bonds (or angles) for which Mogul statistics could be retrieved, the number of bonds (or angles) that are observed in the model and the number of bonds (or angles) that are defined in the chemical component dictionary. The Link column lists molecule types, if any, to which the group is linked. The Z score for a bond length (or angle) is the number of standard deviations the observed value is removed from the expected value. A bond length (or angle) with  $|Z| > 2$  is considered an outlier worth inspection. RMSZ is the root-mean-square of all Z scores of the bond lengths (or angles).

Mol	Type	Chain	Res	Link	Bond lengths			Bond angles		
					Counts	RMSZ	$\# Z  > 2$	Counts	RMSZ	$\# Z  > 2$
3	MLT	A	700	-	1,8,8	0.43	0	2,10,10	0.32	0
4	GOL	A	800	-	5,5,5	0.41	0	5,5,5	0.49	0
5	CPS	B	600	-	44,45,45	0.78	0	67,70,70	0.99	3 (4%)

In the following table, the Chirals column lists the number of chiral outliers, the number of chiral centers analysed, the number of these observed in the model and the number defined in the chemical component dictionary. Similar counts are reported in the Torsion and Rings columns. '-' means no outliers of that kind were identified.

Mol	Type	Chain	Res	Link	Chirals	Torsions	Rings
3	MLT	A	700	-	-	0/2/8/8	0/0/0/0
4	GOL	A	800	-	-	0/4/4/4	0/0/0/0
5	CPS	B	600	-	-	0/25/90/90	0/4/4/4

There are no bond length outliers.

All (3) bond angle outliers are listed below:

Mol	Chain	Res	Type	Atoms	Z	Observed(°)	Ideal(°)
5	B	600	CPS	O4-C4-C5	-2.06	107.78	111.11
5	B	600	CPS	O1S-S-C32	2.01	108.62	106.91
5	B	600	CPS	C16-C17-C18	2.85	114.49	111.47

There are no chirality outliers.

There are no torsion outliers.

There are no ring outliers.

2 monomers are involved in 8 short contacts:

Mol	Chain	Res	Type	Clashes	Symm-Clashes
4	A	800	GOL	7	0

*Continued on next page...*

*Continued from previous page...*

Mol	Chain	Res	Type	Clashes	Symm-Clashes
5	B	600	CPS	1	0

## 5.7 Other polymers [i](#)

There are no such residues in this entry.

## 5.8 Polymer linkage issues [i](#)

There are no chain breaks in this entry.

## 6 Fit of model and data

### 6.1 Protein, DNA and RNA chains

In the following table, the column labelled ‘#RSRZ> 2’ contains the number (and percentage) of RSRZ outliers, followed by percent RSRZ outliers for the chain as percentile scores relative to all X-ray entries and entries of similar resolution. The OWAB column contains the minimum, median, 95<sup>th</sup> percentile and maximum values of the occupancy-weighted average B-factor per residue. The column labelled ‘Q< 0.9’ lists the number of (and percentage) of residues with an average occupancy less than 0.9.

Mol	Chain	Analysed	<RSRZ>	#RSRZ>2	OWAB(Å <sup>2</sup> )	Q<0.9
1	A	231/242 (95%)	0.17	19 (8%) 14 20	22, 43, 76, 94	2 (0%)
1	B	232/242 (95%)	0.19	12 (5%) 31 39	22, 43, 79, 104	0
2	E	3/10 (30%)	2.67	2 (66%) 0 0	80, 80, 90, 94	0
2	F	3/10 (30%)	1.63	1 (33%) 0 0	73, 73, 78, 85	0
All	All	469/504 (93%)	0.21	34 (7%) 18 26	22, 43, 80, 104	2 (0%)

All (34) RSRZ outliers are listed below:

Mol	Chain	Res	Type	RSRZ
1	A	79	LEU	6.6
1	B	124	THR	6.4
1	B	43	ARG	6.3
1	A	43	ARG	6.0
1	B	41	SER	5.9
1	A	80	PRO	5.9
1	A	153	GLY	5.7
1	A	125	GLY	4.9
1	B	152	ALA	4.8
2	E	7	ILE	4.6
1	A	124	THR	4.5
1	B	168	GLU	4.4
2	F	7	ILE	4.4
1	A	169	GLU	4.3
1	A	42	LYS	3.8
1	B	42	LYS	3.5
1	B	170	LYS	3.5
1	A	167	ARG	3.4
1	A	218	GLY	3.3
1	B	153	GLY	3.2
2	E	8	PRO	3.1

*Continued on next page...*

*Continued from previous page...*

Mol	Chain	Res	Type	RSRZ
1	B	233	PRO	2.8
1	A	45	THR	2.8
1	B	169	GLU	2.7
1	A	2	GLU	2.6
1	A	170	LYS	2.5
1	A	220	LYS	2.5
1	B	125	GLY	2.4
1	A	78	ALA	2.4
1	A	3	GLY	2.3
1	B	9	VAL	2.2
1	A	168	GLU	2.2
1	A	232	MET	2.1
1	A	126	THR	2.0

## 6.2 Non-standard residues in protein, DNA, RNA chains [i](#)

There are no non-standard protein/DNA/RNA residues in this entry.

## 6.3 Carbohydrates [i](#)

There are no carbohydrates in this entry.

## 6.4 Ligands [i](#)

In the following table, the Atoms column lists the number of modelled atoms in the group and the number defined in the chemical component dictionary. LLDF column lists the quality of electron density of the group with respect to its neighbouring residues in protein, DNA or RNA chains. The B-factors column lists the minimum, median, 95<sup>th</sup> percentile and maximum values of B factors of atoms in the group. The column labelled 'Q< 0.9' lists the number of atoms with occupancy less than 0.9.

Mol	Type	Chain	Res	Atoms	RSCC	RSR	LLDF	B-factors(Å <sup>2</sup> )	Q<0.9
3	MLT	A	700	9/9	0.79	0.33	8.24	95,98,100,100	0
4	GOL	A	800	6/6	0.85	0.21	4.52	51,57,59,60	0
5	CPS	B	600	42/42	0.98	0.15	0.33	19,29,42,43	0

## 6.5 Other polymers [i](#)

There are no such residues in this entry.