



Full wwPDB X-ray Structure Validation Report ⓘ

Feb 1, 2016 – 11:55 AM GMT

PDB ID : 3QCF
Title : Human receptor protein tyrosine phosphatase gamma, domain 1, in complex with 3-[(3,4-dichlorobenzyl)sulfanyl]thiophene-2-carboxylic acid via co-crystallization
Authors : Sheriff, S.
Deposited on : 2011-01-16
Resolution : 2.50 Å(reported)

This is a Full wwPDB X-ray Structure Validation Report for a publicly released PDB entry.
We welcome your comments at validation@mail.wwpdb.org
A user guide is available at
<http://wwpdb.org/validation/2016/XrayValidationReportHelp>
with specific help available everywhere you see the ⓘ symbol.

The following versions of software and data (see [references ⓘ](#)) were used in the production of this report:

MolProbity : 4.02b-467
Mogul : 1.7 (RC4), CSD as536be (2015)
Xtriage (Phenix) : 1.9-1692
EDS : rb-20026688
Percentile statistics : 20151230.v01 (using entries in the PDB archive December 30th 2015)
Refmac : 5.8.0135
CCP4 : 6.5.0
Ideal geometry (proteins) : Engh & Huber (2001)
Ideal geometry (DNA, RNA) : Parkinson et al. (1996)
Validation Pipeline (wwPDB-VP) : trunk26865

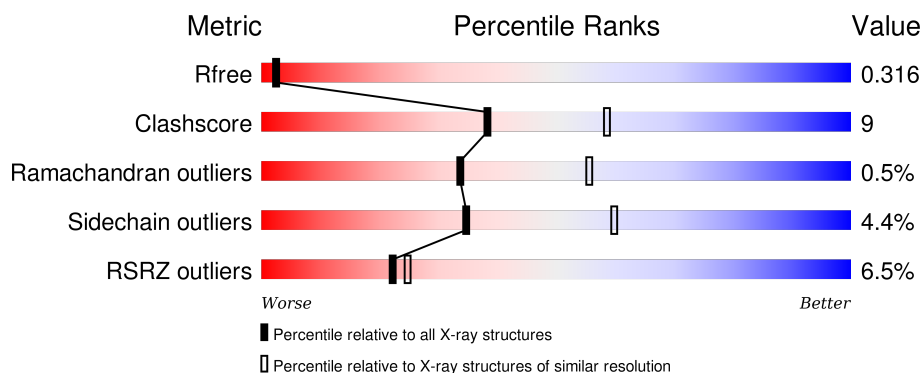
1 Overall quality at a glance

The following experimental techniques were used to determine the structure:

X-RAY DIFFRACTION

The reported resolution of this entry is 2.50 Å.

Percentile scores (ranging between 0-100) for global validation metrics of the entry are shown in the following graphic. The table shows the number of entries on which the scores are based.



Metric	Whole archive (#Entries)	Similar resolution (#Entries, resolution range(Å))
R_{free}	91344	3553 (2.50-2.50)
Clashscore	102246	4242 (2.50-2.50)
Ramachandran outliers	100387	4156 (2.50-2.50)
Sidechain outliers	100360	4158 (2.50-2.50)
RSRZ outliers	91569	3562 (2.50-2.50)

The table below summarises the geometric issues observed across the polymeric chains and their fit to the electron density. The red, orange, yellow and green segments on the lower bar indicate the fraction of residues that contain outliers for ≥ 3 , 2, 1 and 0 types of geometric quality criteria. A grey segment represents the fraction of residues that are not modelled. The numeric value for each fraction is indicated below the corresponding segment, with a dot representing fractions $\leq 5\%$. The upper red bar (where present) indicates the fraction of residues that have poor fit to the electron density. The numeric value is given above the bar.

Mol	Chain	Length	Quality of chain
1	A	310	 6% 74% 15% • 8%
1	B	310	 5% 68% 22% • 8%

2 Entry composition

There are 4 unique types of molecules in this entry. The entry contains 4653 atoms, of which 0 are hydrogens and 0 are deuteriums.

In the tables below, the ZeroOcc column contains the number of atoms modelled with zero occupancy, the AltConf column contains the number of residues with at least one atom in alternate conformation and the Trace column contains the number of residues modelled with at most 2 atoms.

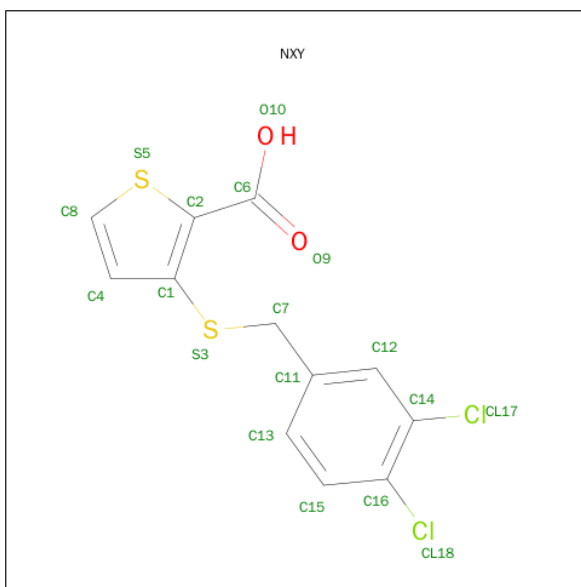
- Molecule 1 is a protein called Receptor-type tyrosine-protein phosphatase gamma.

Mol	Chain	Residues	Atoms					ZeroOcc	AltConf	Trace
1	A	284	Total	C	N	O	S	4	8	0
			2317	1472	408	427	10			
1	B	284	Total	C	N	O	S	4	0	0
			2260	1434	400	416	10			

There are 12 discrepancies between the modelled and reference sequences:

Chain	Residue	Modelled	Actual	Comment	Reference
A	819	GLY	-	EXPRESSION TAG	UNP P23470
A	820	SER	-	EXPRESSION TAG	UNP P23470
A	821	HIS	-	EXPRESSION TAG	UNP P23470
A	822	MET	-	EXPRESSION TAG	UNP P23470
A	823	GLY	-	EXPRESSION TAG	UNP P23470
A	824	SER	-	EXPRESSION TAG	UNP P23470
B	819	GLY	-	EXPRESSION TAG	UNP P23470
B	820	SER	-	EXPRESSION TAG	UNP P23470
B	821	HIS	-	EXPRESSION TAG	UNP P23470
B	822	MET	-	EXPRESSION TAG	UNP P23470
B	823	GLY	-	EXPRESSION TAG	UNP P23470
B	824	SER	-	EXPRESSION TAG	UNP P23470

- Molecule 2 is 3-[(3,4-DICHLOROBENZYL)SULFANYL]THIOPHENE-2-CARBOXYLIC ACID (three-letter code: NXY) (formula: C₁₂H₈Cl₂O₂S₂).



Mol	Chain	Residues	Atoms				ZeroOcc	AltConf
2	A	1	Total	C	Cl	O	S	
			18	12	2	2	2	0
2	B	1	Total	C	Cl	O	S	
			18	12	2	2	2	0

- Molecule 3 is SULFATE ION (three-letter code: SO4) (formula: O₄S).



Mol	Chain	Residues	Atoms		ZeroOcc	AltConf
3	B	1	Total	O S		
			5	4 1	0	0

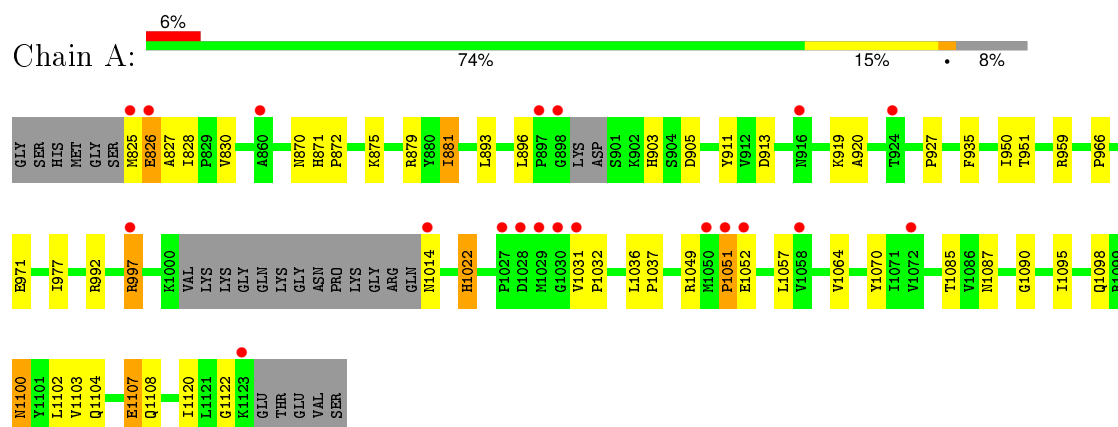
- Molecule 4 is water.

Mol	Chain	Residues	Atoms		ZeroOcc	AltConf
4	A	19	Total 19	O 19	0	0
4	B	16	Total 16	O 16	0	0

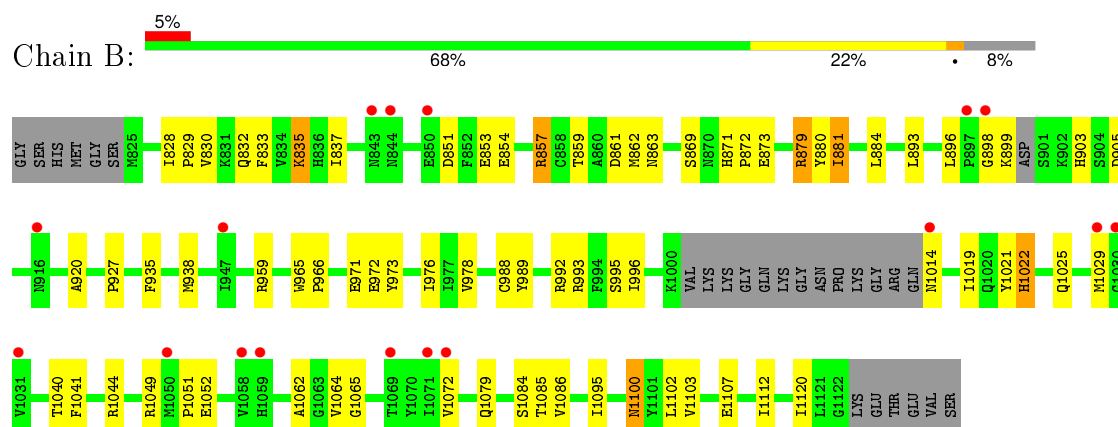
3 Residue-property plots [i](#)

These plots are drawn for all protein, RNA and DNA chains in the entry. The first graphic for a chain summarises the proportions of errors displayed in the second graphic. The second graphic shows the sequence view annotated by issues in geometry and electron density. Residues are color-coded according to the number of geometric quality criteria for which they contain at least one outlier: green = 0, yellow = 1, orange = 2 and red = 3 or more. A red dot above a residue indicates a poor fit to the electron density ($RSRZ > 2$). Stretches of 2 or more consecutive residues without any outlier are shown as a green connector. Residues present in the sample, but not in the model, are shown in grey.

- Molecule 1: Receptor-type tyrosine-protein phosphatase gamma



- Molecule 1: Receptor-type tyrosine-protein phosphatase gamma



4 Data and refinement statistics

Property	Value	Source
Space group	P 21 21 21	Depositor
Cell constants a, b, c, α , β , γ	74.90 Å 82.30 Å 126.80 Å 90.00° 90.00° 90.00°	Depositor
Resolution (Å)	25.38 – 2.50 25.38 – 2.50	Depositor EDS
% Data completeness (in resolution range)	98.3 (25.38-2.50) 98.4 (25.38-2.50)	Depositor EDS
R_{merge}	0.10	Depositor
R_{sym}	(Not available)	Depositor
$\langle I/\sigma(I) \rangle$ ¹	3.70 (at 2.50 Å)	Xtriage
Refinement program	CNX 2005	Depositor
R, R_{free}	0.263 , 0.324 0.262 , 0.316	Depositor DCC
R_{free} test set	679 reflections (2.55%)	DCC
Wilson B-factor (Å ²)	38.2	Xtriage
Anisotropy	0.250	Xtriage
Bulk solvent k_{sol} (e/Å ³), B_{sol} (Å ²)	0.33 , 36.6	EDS
Estimated twinning fraction	No twinning to report.	Xtriage
L-test for twinning ²	$\langle L \rangle = 0.50$, $\langle L^2 \rangle = 0.34$	Xtriage
Outliers	0 of 27337 reflections	Xtriage
F_o, F_c correlation	0.91	EDS
Total number of atoms	4653	wwPDB-VP
Average B, all atoms (Å ²)	33.0	wwPDB-VP

Xtriage's analysis on translational NCS is as follows: *The largest off-origin peak in the Patterson function is 5.66% of the height of the origin peak. No significant pseudotranslation is detected.*

¹Intensities estimated from amplitudes.

²Theoretical values of $\langle |L| \rangle$, $\langle L^2 \rangle$ for acentric reflections are 0.5, 0.375 respectively for untwinned datasets, and 0.333, 0.2 for perfectly twinned datasets.

5 Model quality [i](#)

5.1 Standard geometry [i](#)

Bond lengths and bond angles in the following residue types are not validated in this section: NXY, SO4

The Z score for a bond length (or angle) is the number of standard deviations the observed value is removed from the expected value. A bond length (or angle) with $|Z| > 5$ is considered an outlier worth inspection. RMSZ is the root-mean-square of all Z scores of the bond lengths (or angles).

Mol	Chain	Bond lengths		Bond angles	
		RMSZ	$\# Z > 5$	RMSZ	$\# Z > 5$
1	A	0.35	0/2373	0.51	0/3227
1	B	0.35	0/2312	0.51	0/3140
All	All	0.35	0/4685	0.51	0/6367

Chiral center outliers are detected by calculating the chiral volume of a chiral center and verifying if the center is modelled as a planar moiety or with the opposite hand. A planarity outlier is detected by checking planarity of atoms in a peptide group, atoms in a mainchain group or atoms of a sidechain that are expected to be planar.

Mol	Chain	#Chirality outliers	#Planarity outliers
1	A	0	1

There are no bond length outliers.

There are no bond angle outliers.

There are no chirality outliers.

All (1) planarity outliers are listed below:

Mol	Chain	Res	Type	Group
1	A	1051	PRO	Peptide

5.2 Too-close contacts [i](#)

In the following table, the Non-H and H(model) columns list the number of non-hydrogen atoms and hydrogen atoms in the chain respectively. The H(added) column lists the number of hydrogen atoms added and optimized by MolProbity. The Clashes column lists the number of clashes within the asymmetric unit, whereas Symm-Clashes lists symmetry related clashes.

Mol	Chain	Non-H	H(model)	H(added)	Clashes	Symm-Clashes
1	A	2317	0	2219	37	0
1	B	2260	0	2178	48	0
2	A	18	0	7	3	0
2	B	18	0	7	0	0
3	B	5	0	0	0	0
4	A	19	0	0	0	0
4	B	16	0	0	0	0
All	All	4653	0	4411	82	0

The all-atom clashscore is defined as the number of clashes found per 1000 atoms (including hydrogen atoms). The all-atom clashscore for this structure is 9.

All (82) close contacts within the same asymmetric unit are listed below, sorted by their clash magnitude.

Atom-1	Atom-2	Interatomic distance (Å)	Clash overlap (Å)
1:A:1032[B]:PRO:HG2	2:A:2001[B]:NXY:H7	1.63	0.81
1:A:1107:GLU:HG2	2:A:2001[B]:NXY:S5	2.24	0.77
1:A:1104:GLN:HE22	1:B:863:ASN:HD21	1.33	0.75
1:B:992:ARG:HH12	1:B:1022:HIS:HD2	1.35	0.73
1:A:966:PRO:HB3	1:A:971:GLU:HB2	1.71	0.73
1:A:1104:GLN:HE22	1:B:863:ASN:ND2	1.89	0.70
1:A:830:VAL:HG13	1:A:1120:ILE:HD13	1.76	0.68
1:B:833:PHE:CG	1:B:1086:VAL:HG11	2.31	0.65
1:A:913:ASP:CG	1:A:1098:GLN:HE22	1.99	0.65
1:A:893:LEU:HB2	1:A:905:ASP:HA	1.78	0.65
1:A:825:MET:HG2	1:A:826:GLU:OE1	1.97	0.64
1:B:988:CYS:SG	1:B:1025:GLN:NE2	2.72	0.62
1:B:828:ILE:HD11	1:B:833:PHE:HA	1.83	0.61
1:A:927:PRO:HG3	1:A:935:PHE:CD1	2.37	0.59
1:A:871:HIS:ND1	1:A:872:PRO:HD2	2.18	0.59
1:B:927:PRO:HG3	1:B:935:PHE:CD1	2.38	0.58
1:B:993:ARG:HG3	1:B:1019:ILE:CD1	2.33	0.58
1:A:1036:LEU:HB3	1:A:1037:PRO:HD3	1.85	0.57
1:B:971:GLU:HG2	1:B:973:TYR:CZ	2.40	0.56
1:A:997:ARG:HD2	1:A:1014:ASN:N	2.19	0.56
1:B:976:ILE:N	1:B:976:ILE:HD12	2.20	0.56
1:A:992:ARG:HH12	1:A:1022:HIS:HD2	1.53	0.55
1:A:872:PRO:HA	1:A:875:LYS:HG2	1.89	0.54
1:A:870:ASN:O	1:A:875:LYS:HE3	2.06	0.54
1:B:992:ARG:HH12	1:B:1022:HIS:CD2	2.21	0.54
1:B:995:SER:OG	1:B:1014:ASN:HA	2.09	0.53
1:B:978:VAL:HG22	1:B:996:ILE:HG22	1.91	0.52

Continued on next page...

Continued from previous page...

Atom-1	Atom-2	Interatomic distance (Å)	Clash overlap (Å)
1:B:1100:ASN:HD22	1:B:1100:ASN:N	2.07	0.52
1:B:869:SER:HB3	1:B:884:LEU:HD22	1.93	0.51
1:B:833:PHE:CE2	1:B:837:ILE:HD11	2.46	0.51
1:B:881:ILE:H	1:B:881:ILE:HD13	1.76	0.51
1:B:1040:THR:O	1:B:1044:ARG:HG3	2.12	0.49
1:B:851:ASP:O	1:B:854:GLU:HB3	2.12	0.49
1:A:1031[A]:VAL:HG13	1:A:1107:GLU:HG2	1.94	0.48
1:B:920:ALA:O	1:B:1049:ARG:NH1	2.43	0.48
1:B:828:ILE:HD12	1:B:832:GLN:HG2	1.95	0.48
1:A:826:GLU:HG2	1:A:826:GLU:O	2.15	0.47
1:B:859:THR:O	1:B:862:MET:HB2	2.15	0.46
1:B:971:GLU:HG3	1:B:972:GLU:N	2.30	0.46
1:A:911:TYR:CG	1:A:919:LYS:HD3	2.50	0.46
1:A:903:HIS:C	1:A:905:ASP:H	2.19	0.46
1:B:830:VAL:HG13	1:B:1120:ILE:HD13	1.98	0.45
1:A:881:ILE:HG12	1:A:881:ILE:O	2.12	0.45
1:B:829:PRO:HD2	1:B:832:GLN:NE2	2.31	0.45
1:B:1072:VAL:HG11	1:B:1112:ILE:HD13	1.98	0.45
1:B:989:TYR:OH	1:B:1044:ARG:HD2	2.17	0.45
1:A:951:THR:O	1:A:1022:HIS:HE1	2.00	0.45
1:A:825:MET:SD	1:A:1087:ASN:ND2	2.90	0.44
1:B:833:PHE:CD2	1:B:1086:VAL:HG11	2.52	0.44
1:A:1057:LEU:HD23	1:A:1057:LEU:C	2.38	0.44
1:A:893:LEU:O	1:A:905:ASP:HB2	2.18	0.43
1:B:1021:TYR:HB3	1:B:1041:PHE:CE1	2.52	0.43
1:A:881:ILE:HG22	1:B:861:ASP:O	2.17	0.43
1:A:1087:ASN:HD21	1:A:1090:GLY:HA3	1.83	0.43
1:A:1051:PRO:HA	1:A:1052:GLU:HA	1.55	0.43
1:B:835:LYS:HB2	1:B:835:LYS:NZ	2.33	0.43
1:B:871:HIS:CE1	1:B:873:GLU:HG3	2.53	0.43
1:A:1108:GLN:HE21	2:A:2001[B]:NXY:C6	2.31	0.43
1:B:893:LEU:HD21	1:B:938:MET:HB2	2.01	0.43
1:A:1100:ASN:HD22	1:A:1100:ASN:C	2.18	0.43
1:A:1095:ILE:HD12	1:A:1102:LEU:HD13	2.00	0.42
1:B:965:TRP:HB2	1:B:966:PRO:HD2	2.01	0.42
1:B:880:TYR:CE2	1:B:1062:ALA:HB2	2.55	0.42
1:B:871:HIS:HA	1:B:872:PRO:HD3	1.90	0.42
1:B:881:ILE:N	1:B:881:ILE:HD13	2.35	0.42
1:B:879:ARG:HG2	1:B:880:TYR:CE2	2.55	0.42
1:A:903:HIS:C	1:A:905:ASP:N	2.74	0.41
1:B:976:ILE:CD1	1:B:976:ILE:N	2.83	0.41

Continued on next page...

Continued from previous page...

Atom-1	Atom-2	Interatomic distance (Å)	Clash overlap (Å)
1:A:1064:VAL:O	1:A:1102:LEU:HA	2.20	0.41
1:B:1064:VAL:HG23	1:B:1065:GLY:N	2.35	0.41
1:A:977:ILE:HD12	1:A:997:ARG:NH2	2.35	0.41
1:B:857:ARG:HA	1:B:857:ARG:HD2	1.84	0.41
1:B:871:HIS:ND1	1:B:872:PRO:HD2	2.36	0.41
1:A:827:ALA:HB1	1:A:1085:THR:HB	2.01	0.41
1:B:1051:PRO:HA	1:B:1052:GLU:HA	1.65	0.41
1:A:950:ILE:CD1	1:A:1070:TYR:HB2	2.51	0.41
1:B:1107:GLU:CD	1:B:1107:GLU:H	2.24	0.41
1:B:1079:GLN:HG2	1:B:1085:THR:O	2.21	0.40
1:B:903:HIS:C	1:B:905:ASP:H	2.24	0.40
1:B:898:GLY:O	1:B:899:LYS:CB	2.70	0.40
1:A:920:ALA:O	1:A:1049:ARG:NH1	2.42	0.40
1:B:1095:ILE:HD12	1:B:1102:LEU:HD13	2.03	0.40

There are no symmetry-related clashes.

5.3 Torsion angles [i](#)

5.3.1 Protein backbone [i](#)

In the following table, the Percentiles column shows the percent Ramachandran outliers of the chain as a percentile score with respect to all X-ray entries followed by that with respect to entries of similar resolution.

The Analysed column shows the number of residues for which the backbone conformation was analysed, and the total number of residues.

Mol	Chain	Analysed	Favoured	Allowed	Outliers	Percentiles	
1	A	286/310 (92%)	271 (95%)	13 (4%)	2 (1%)	26	46
1	B	278/310 (90%)	265 (95%)	12 (4%)	1 (0%)	39	61
All	All	564/620 (91%)	536 (95%)	25 (4%)	3 (0%)	34	55

All (3) Ramachandran outliers are listed below:

Mol	Chain	Res	Type
1	A	1103	VAL
1	B	1103	VAL
1	A	1122	GLY

5.3.2 Protein sidechains ⓘ

In the following table, the Percentiles column shows the percent sidechain outliers of the chain as a percentile score with respect to all X-ray entries followed by that with respect to entries of similar resolution.

The Analysed column shows the number of residues for which the sidechain conformation was analysed, and the total number of residues.

Mol	Chain	Analysed	Rotameric	Outliers	Percentiles	
1	A	245/275 (89%)	235 (96%)	10 (4%)	37	63
1	B	240/275 (87%)	229 (95%)	11 (5%)	33	57
All	All	485/550 (88%)	464 (96%)	21 (4%)	35	61

All (21) residues with a non-rotameric sidechain are listed below:

Mol	Chain	Res	Type
1	A	826	GLU
1	A	828	ILE
1	A	879	ARG
1	A	881	ILE
1	A	896	LEU
1	A	959	ARG
1	A	997	ARG
1	A	1022	HIS
1	A	1100	ASN
1	A	1107	GLU
1	B	835	LYS
1	B	853	GLU
1	B	857	ARG
1	B	879	ARG
1	B	881	ILE
1	B	896	LEU
1	B	959	ARG
1	B	1022	HIS
1	B	1029	MET
1	B	1084	SER
1	B	1100	ASN

Some sidechains can be flipped to improve hydrogen bonding and reduce clashes. All (23) such sidechains are listed below:

Mol	Chain	Res	Type
1	A	832	GLN

Continued on next page...

Continued from previous page...

Mol	Chain	Res	Type
1	A	844	ASN
1	A	845	GLN
1	A	888	HIS
1	A	903	HIS
1	A	963	GLN
1	A	969	ASN
1	A	975	ASN
1	A	1022	HIS
1	A	1078	GLN
1	A	1079	GLN
1	A	1087	ASN
1	B	832	GLN
1	B	845	GLN
1	B	863	ASN
1	B	876	HIS
1	B	882	ASN
1	B	963	GLN
1	B	975	ASN
1	B	1022	HIS
1	B	1025	GLN
1	B	1079	GLN
1	B	1100	ASN

5.3.3 RNA [i](#)

There are no RNA molecules in this entry.

5.4 Non-standard residues in protein, DNA, RNA chains [i](#)

There are no non-standard protein/DNA/RNA residues in this entry.

5.5 Carbohydrates [i](#)

There are no carbohydrates in this entry.

5.6 Ligand geometry [i](#)

3 ligands are modelled in this entry.

In the following table, the Counts columns list the number of bonds (or angles) for which Mogul statistics could be retrieved, the number of bonds (or angles) that are observed in the model and

the number of bonds (or angles) that are defined in the chemical component dictionary. The Link column lists molecule types, if any, to which the group is linked. The Z score for a bond length (or angle) is the number of standard deviations the observed value is removed from the expected value. A bond length (or angle) with $|Z| > 2$ is considered an outlier worth inspection. RMSZ is the root-mean-square of all Z scores of the bond lengths (or angles).

Mol	Type	Chain	Res	Link	Bond lengths			Bond angles		
					Counts	RMSZ	# Z > 2	Counts	RMSZ	# Z > 2
2	NXY	A	2001[B]	-	14,19,19	1.97	7 (50%)	15,26,26	3.77	7 (46%)
2	NXY	B	2001	-	14,19,19	1.76	3 (21%)	15,26,26	2.96	5 (33%)
3	SO4	B	2051	-	4,4,4	0.21	0	6,6,6	0.07	0

In the following table, the Chirals column lists the number of chiral outliers, the number of chiral centers analysed, the number of these observed in the model and the number defined in the chemical component dictionary. Similar counts are reported in the Torsion and Rings columns. '-' means no outliers of that kind were identified.

Mol	Type	Chain	Res	Link	Chirals	Torsions	Rings
2	NXY	A	2001[B]	-	-	0/3/9/9	0/2/2/2
2	NXY	B	2001	-	-	0/3/9/9	0/2/2/2
3	SO4	B	2051	-	-	0/0/0/0	0/0/0/0

All (10) bond length outliers are listed below:

Mol	Chain	Res	Type	Atoms	Z	Observed(Å)	Ideal(Å)
2	A	2001[B]	NXY	C1-S3	-3.44	1.72	1.77
2	B	2001	NXY	C1-S3	-2.44	1.73	1.77
2	A	2001[B]	NXY	C15-C13	2.13	1.42	1.38
2	B	2001	NXY	C16-C14	2.19	1.44	1.39
2	A	2001[B]	NXY	C15-C16	2.20	1.43	1.39
2	A	2001[B]	NXY	C12-C11	2.25	1.43	1.39
2	A	2001[B]	NXY	C16-C14	2.40	1.45	1.39
2	A	2001[B]	NXY	C12-C14	2.59	1.42	1.38
2	A	2001[B]	NXY	C13-C11	3.05	1.45	1.38
2	B	2001	NXY	C13-C11	3.17	1.45	1.38

All (12) bond angle outliers are listed below:

Mol	Chain	Res	Type	Atoms	Z	Observed(°)	Ideal(°)
2	A	2001[B]	NXY	C14-C12-C11	-9.10	114.48	120.36
2	B	2001	NXY	C14-C12-C11	-8.86	114.64	120.36
2	A	2001[B]	NXY	C7-S3-C1	-7.51	88.88	102.58
2	B	2001	NXY	C13-C15-C16	-4.19	113.71	119.95
2	A	2001[B]	NXY	C13-C15-C16	-3.22	115.15	119.95

Continued on next page...

Continued from previous page...

Mol	Chain	Res	Type	Atoms	Z	Observed($^{\circ}$)	Ideal($^{\circ}$)
2	B	2001	NXY	C7-C11-C12	-2.96	116.00	120.30
2	A	2001[B]	NXY	C7-C11-C12	-2.21	117.09	120.30
2	A	2001[B]	NXY	C15-C16-C14	2.31	124.55	120.00
2	B	2001	NXY	C15-C16-C14	2.37	124.68	120.00
2	B	2001	NXY	C13-C11-C12	3.64	123.93	118.55
2	A	2001[B]	NXY	C13-C11-C12	4.59	125.35	118.55
2	A	2001[B]	NXY	C8-S5-C2	5.00	97.49	91.50

There are no chirality outliers.

There are no torsion outliers.

There are no ring outliers.

1 monomer is involved in 3 short contacts:

Mol	Chain	Res	Type	Clashes	Symm-Clashes
2	A	2001[B]	NXY	3	0

5.7 Other polymers [i](#)

There are no such residues in this entry.

5.8 Polymer linkage issues [i](#)

There are no chain breaks in this entry.

6 Fit of model and data ⓘ

6.1 Protein, DNA and RNA chains ⓘ

In the following table, the column labelled ‘#RSRZ> 2’ contains the number (and percentage) of RSRZ outliers, followed by percent RSRZ outliers for the chain as percentile scores relative to all X-ray entries and entries of similar resolution. The OWAB column contains the minimum, median, 95th percentile and maximum values of the occupancy-weighted average B-factor per residue. The column labelled ‘Q< 0.9’ lists the number of (and percentage) of residues with an average occupancy less than 0.9.

Mol	Chain	Analysed	<RSRZ>	#RSRZ>2		OWAB(Å ²)	Q<0.9
1	A	284/310 (91%)	0.28	20 (7%)	19 22	18, 31, 52, 64	2 (0%)
1	B	284/310 (91%)	0.29	17 (5%)	25 28	22, 33, 53, 70	3 (1%)
All	All	568/620 (91%)	0.29	37 (6%)	22 25	18, 32, 52, 70	5 (0%)

All (37) RSRZ outliers are listed below:

Mol	Chain	Res	Type	RSRZ
1	B	1014	ASN	6.7
1	A	1014	ASN	5.0
1	A	1028[A]	ASP	4.9
1	B	898	GLY	4.3
1	A	1050	MET	4.0
1	A	1031[A]	VAL	3.9
1	B	1029	MET	3.7
1	A	825	MET	3.7
1	A	1123	LYS	3.6
1	A	897	PRO	3.6
1	B	897	PRO	3.0
1	A	1029[A]	MET	2.9
1	B	916	ASN	2.9
1	A	916	ASN	2.7
1	A	1030[A]	GLY	2.7
1	A	1051	PRO	2.6
1	B	1031	VAL	2.6
1	A	1027[A]	PRO	2.6
1	B	1030	GLY	2.6
1	B	843	ASN	2.5
1	A	826	GLU	2.5
1	B	844	ASN	2.5
1	A	924	THR	2.5
1	B	947	ILE	2.4

Continued on next page...

Continued from previous page...

Mol	Chain	Res	Type	RSRZ
1	B	1058	VAL	2.4
1	A	860	ALA	2.4
1	A	898	GLY	2.4
1	A	1052	GLU	2.3
1	B	1069	THR	2.3
1	B	1072	VAL	2.3
1	A	997	ARG	2.2
1	B	850	GLU	2.1
1	A	1058	VAL	2.1
1	B	1071	ILE	2.1
1	B	1050	MET	2.1
1	B	1059	HIS	2.0
1	A	1072	VAL	2.0

6.2 Non-standard residues in protein, DNA, RNA chains [i](#)

There are no non-standard protein/DNA/RNA residues in this entry.

6.3 Carbohydrates [i](#)

There are no carbohydrates in this entry.

6.4 Ligands [i](#)

In the following table, the Atoms column lists the number of modelled atoms in the group and the number defined in the chemical component dictionary. LLDF column lists the quality of electron density of the group with respect to its neighbouring residues in protein, DNA or RNA chains. The B-factors column lists the minimum, median, 95th percentile and maximum values of B factors of atoms in the group. The column labelled 'Q< 0.9' lists the number of atoms with occupancy less than 0.9.

Mol	Type	Chain	Res	Atoms	RSCC	RSR	LLDF	B-factors(Å ²)	Q<0.9
2	NXY	A	2001[B]	18/18	0.88	0.26	0.75	25,32,34,37	18
2	NXY	B	2001	18/18	0.93	0.14	-0.67	34,41,46,47	0
3	SO4	B	2051	5/5	0.98	0.11	-	53,53,55,55	0

6.5 Other polymers [i](#)

There are no such residues in this entry.