



Full wwPDB X-ray Structure Validation Report ⓘ

Feb 1, 2016 – 07:57 PM GMT

PDB ID : 4QEO
Title : crystal structure of KRYPTONITE in complex with mCHH DNA, H3(1-15) peptide and SAH
Authors : Du, J.; Li, S.; Patel, D.J.
Deposited on : 2014-05-17
Resolution : 2.00 Å(reported)

This is a Full wwPDB X-ray Structure Validation Report for a publicly released PDB entry.
We welcome your comments at validation@mail.wwpdb.org
A user guide is available at
<http://wwpdb.org/validation/2016/XrayValidationReportHelp>
with specific help available everywhere you see the ⓘ symbol.

The following versions of software and data (see [references ⓘ](#)) were used in the production of this report:

MolProbity : 4.02b-467
Mogul : 1.7 (RC4), CSD as536be (2015)
Xtriage (Phenix) : 1.9-1692
EDS : rb-20026688
Percentile statistics : 20151230.v01 (using entries in the PDB archive December 30th 2015)
Refmac : 5.8.0135
CCP4 : 6.5.0
Ideal geometry (proteins) : Engh & Huber (2001)
Ideal geometry (DNA, RNA) : Parkinson et al. (1996)
Validation Pipeline (wwPDB-VP) : trunk26865

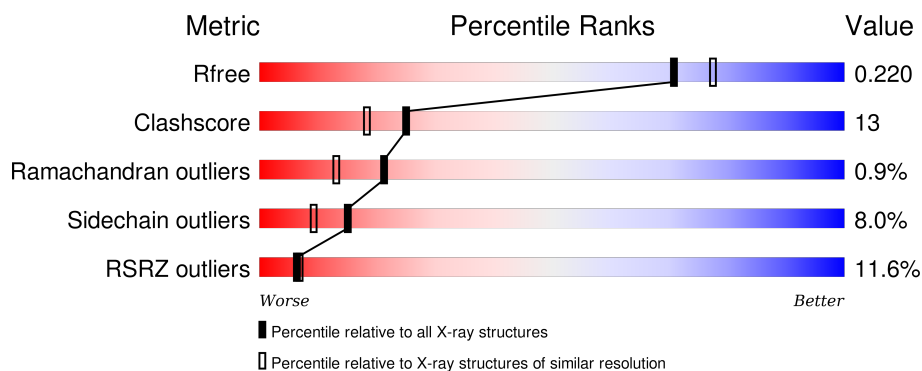
1 Overall quality at a glance

The following experimental techniques were used to determine the structure:

X-RAY DIFFRACTION

The reported resolution of this entry is 2.00 Å.

Percentile scores (ranging between 0-100) for global validation metrics of the entry are shown in the following graphic. The table shows the number of entries on which the scores are based.



Metric	Whole archive (#Entries)	Similar resolution (#Entries, resolution range(Å))
R_{free}	91344	6249 (2.00-2.00)
Clashscore	102246	7340 (2.00-2.00)
Ramachandran outliers	100387	7248 (2.00-2.00)
Sidechain outliers	100360	7247 (2.00-2.00)
RSRZ outliers	91569	6262 (2.00-2.00)

The table below summarises the geometric issues observed across the polymeric chains and their fit to the electron density. The red, orange, yellow and green segments on the lower bar indicate the fraction of residues that contain outliers for ≥ 3 , 2, 1 and 0 types of geometric quality criteria. A grey segment represents the fraction of residues that are not modelled. The numeric value for each fraction is indicated below the corresponding segment, with a dot representing fractions $\leq 5\%$. The upper red bar (where present) indicates the fraction of residues that have poor fit to the electron density. The numeric value is given above the bar.

Mol	Chain	Length	Quality of chain
1	A	533	<div> <div>11%</div> <div> <div>74%</div> <div>12%</div> <div>•</div> <div>11%</div> </div> </div>
2	C	15	<div> <div>40%</div> <div>27%</div> <div>7%</div> <div>27%</div> </div>
3	D	15	<div> <div>20%</div> <div>53%</div> <div>13%</div> <div>13%</div> </div>
4	P	15	<div> <div>13%</div> <div>13%</div> <div>27%</div> <div>7%</div> <div>53%</div> </div>

2 Entry composition

There are 7 unique types of molecules in this entry. The entry contains 4570 atoms, of which 0 are hydrogens and 0 are deuteriums.

In the tables below, the ZeroOcc column contains the number of atoms modelled with zero occupancy, the AltConf column contains the number of residues with at least one atom in alternate conformation and the Trace column contains the number of residues modelled with at most 2 atoms.

- Molecule 1 is a protein called Histone-lysine N-methyltransferase, H3 lysine-9 specific SUVH4.

Mol	Chain	Residues	Atoms					ZeroOcc	AltConf	Trace
1	A	472	Total	C	N	O	S	0	0	0
			3721	2351	652	688	30			

There is a discrepancy between the modelled and reference sequences:

Chain	Residue	Modelled	Actual	Comment	Reference
A	92	SER	-	EXPRESSION TAG	UNP Q8GZB6

- Molecule 2 is a DNA chain called DNA 5'-GGTACT(5CM)ATCAGTAT-3'.

Mol	Chain	Residues	Atoms					ZeroOcc	AltConf	Trace
2	C	11	Total	C	N	O	P	0	0	0
			222	108	40	64	10			

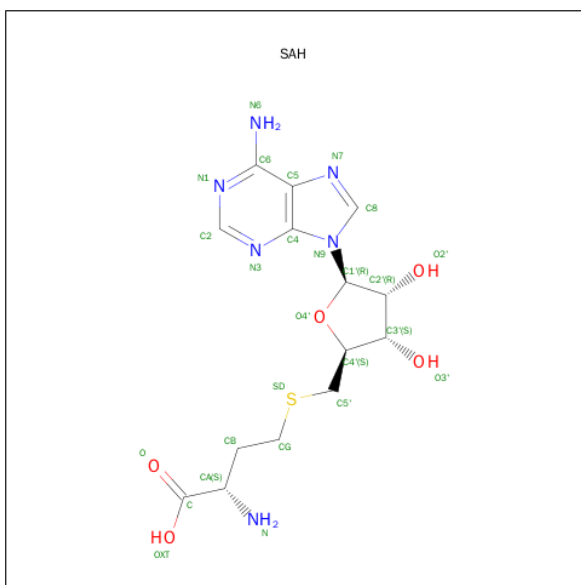
- Molecule 3 is a DNA chain called DNA 5'-ACTGATGAGTACCAT-3'.

Mol	Chain	Residues	Atoms					ZeroOcc	AltConf	Trace
3	D	13	Total	C	N	O	P	0	0	0
			268	128	49	78	13			

- Molecule 4 is a protein called Histone H3.

Mol	Chain	Residues	Atoms				ZeroOcc	AltConf	Trace
4	P	7	Total	C	N	O	0	0	0
			44	26	9	9			

- Molecule 5 is S-ADENOSYL-L-HOMOCYSTEINE (three-letter code: SAH) (formula: C₁₄H₂₀N₆O₅S).



Mol	Chain	Residues	Atoms					ZeroOcc	AltConf
5	A	1	Total	C	N	O	S	0	0
			26	14	6	5	1		

- Molecule 6 is ZINC ION (three-letter code: ZN) (formula: Zn).

Mol	Chain	Residues	Atoms		ZeroOcc	AltConf
6	A	4	Total	Zn	0	0
			4	4		

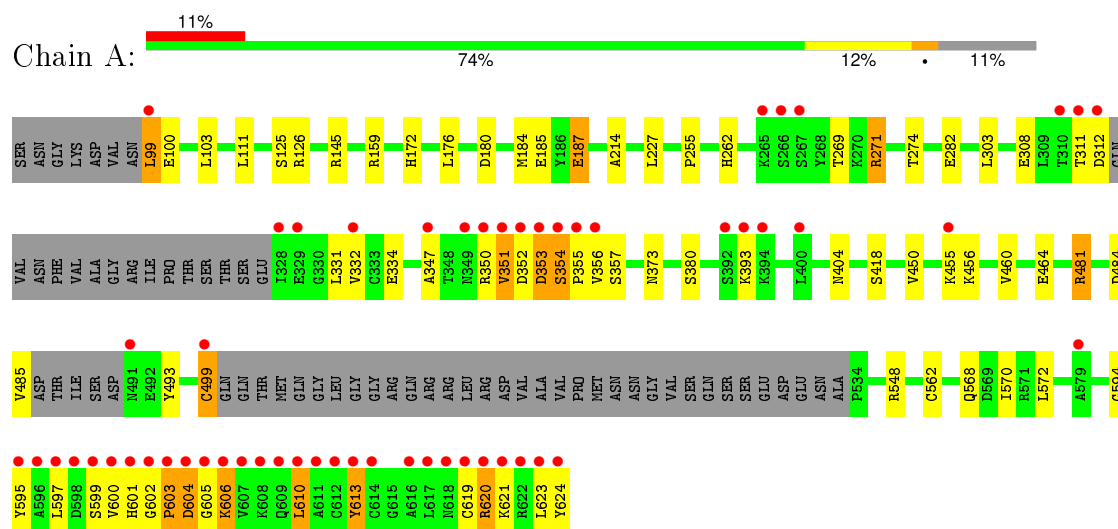
- Molecule 7 is water.

Mol	Chain	Residues	Atoms		ZeroOcc	AltConf
7	A	251	Total	O	0	0
			251	251		
7	C	18	Total	O	0	0
			18	18		
7	D	15	Total	O	0	0
			15	15		
7	P	1	Total	O	0	0
			1	1		

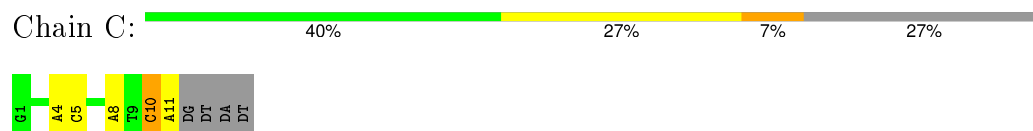
3 Residue-property plots [i](#)

These plots are drawn for all protein, RNA and DNA chains in the entry. The first graphic for a chain summarises the proportions of errors displayed in the second graphic. The second graphic shows the sequence view annotated by issues in geometry and electron density. Residues are color-coded according to the number of geometric quality criteria for which they contain at least one outlier: green = 0, yellow = 1, orange = 2 and red = 3 or more. A red dot above a residue indicates a poor fit to the electron density ($RSRZ > 2$). Stretches of 2 or more consecutive residues without any outlier are shown as a green connector. Residues present in the sample, but not in the model, are shown in grey.

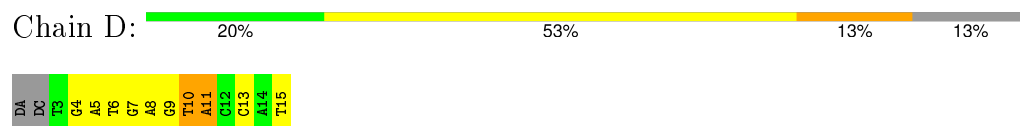
- Molecule 1: Histone-lysine N-methyltransferase, H3 lysine-9 specific SUVH4



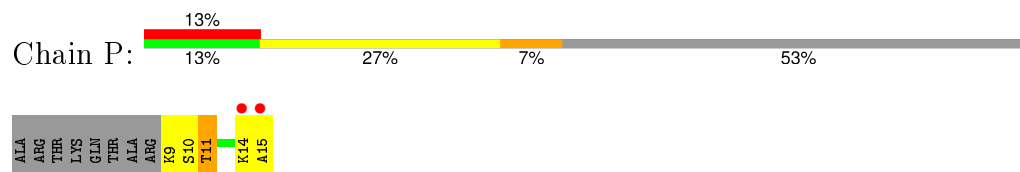
- Molecule 2: DNA 5'-GGTACT(5CM)ATCAGTAT-3'



- Molecule 3: DNA 5'-ACTGATGAGTACCAT-3'



- Molecule 4: Histone H3



4 Data and refinement statistics

Property	Value	Source
Space group	P 21 21 21	Depositor
Cell constants a, b, c, α , β , γ	55.46Å 96.77Å 122.41Å 90.00° 90.00° 90.00°	Depositor
Resolution (Å)	41.10 – 2.00 41.10 – 2.00	Depositor EDS
% Data completeness (in resolution range)	99.8 (41.10-2.00) 99.8 (41.10-2.00)	Depositor EDS
R_{merge}	0.07	Depositor
R_{sym}	0.07	Depositor
$\langle I/\sigma(I) \rangle$ ¹	2.78 (at 2.00Å)	Xtriage
Refinement program	PHENIX (phenix.refine: 1.8.1_1168)	Depositor
R, R_{free}	0.186 , 0.226 0.195 , 0.220	Depositor DCC
R_{free} test set	2272 reflections (5.29%)	DCC
Wilson B-factor (Å ²)	36.4	Xtriage
Anisotropy	0.507	Xtriage
Bulk solvent k_{sol} (e/Å ³), B_{sol} (Å ²)	0.35 , 61.3	EDS
Estimated twinning fraction	No twinning to report.	Xtriage
L-test for twinning ²	$\langle L \rangle = 0.50$, $\langle L^2 \rangle = 0.33$	Xtriage
Outliers	0 of 45214 reflections	Xtriage
F_o, F_c correlation	0.96	EDS
Total number of atoms	4570	wwPDB-VP
Average B, all atoms (Å ²)	51.0	wwPDB-VP

Xtriage's analysis on translational NCS is as follows: *The largest off-origin peak in the Patterson function is 4.18% of the height of the origin peak. No significant pseudotranslation is detected.*

¹Intensities estimated from amplitudes.

²Theoretical values of $\langle |L| \rangle$, $\langle L^2 \rangle$ for acentric reflections are 0.5, 0.375 respectively for untwinned datasets, and 0.333, 0.2 for perfectly twinned datasets.

5 Model quality ⓘ

5.1 Standard geometry ⓘ

Bond lengths and bond angles in the following residue types are not validated in this section: ZN, SAH, 5CM

The Z score for a bond length (or angle) is the number of standard deviations the observed value is removed from the expected value. A bond length (or angle) with $|Z| > 5$ is considered an outlier worth inspection. RMSZ is the root-mean-square of all Z scores of the bond lengths (or angles).

Mol	Chain	Bond lengths		Bond angles	
		RMSZ	$\# Z > 5$	RMSZ	$\# Z > 5$
1	A	0.50	0/3800	0.60	1/5129 (0.0%)
2	C	1.28	2/225 (0.9%)	1.16	2/343 (0.6%)
3	D	1.21	2/300 (0.7%)	1.12	5/461 (1.1%)
4	P	0.57	0/43	1.17	0/54
All	All	0.63	4/4368 (0.1%)	0.70	8/5987 (0.1%)

All (4) bond length outliers are listed below:

Mol	Chain	Res	Type	Atoms	Z	Observed(Å)	Ideal(Å)
3	D	7	DG	O3'-P	-6.88	1.52	1.61
3	D	8	DA	O3'-P	-6.39	1.53	1.61
2	C	5	DC	O3'-P	-5.89	1.54	1.61
2	C	4	DA	O3'-P	-5.58	1.54	1.61

All (8) bond angle outliers are listed below:

Mol	Chain	Res	Type	Atoms	Z	Observed(°)	Ideal(°)
2	C	10	DC	P-O3'-C3'	9.15	130.68	119.70
3	D	10	DT	C1'-O4'-C4'	-5.76	104.33	110.10
2	C	5	DC	P-O3'-C3'	5.59	126.41	119.70
1	A	353	ASP	N-CA-C	-5.53	96.06	111.00
3	D	10	DT	P-O3'-C3'	5.51	126.31	119.70
3	D	7	DG	O5'-P-OP2	-5.40	100.84	105.70
3	D	13	DC	P-O3'-C3'	-5.35	113.28	119.70
3	D	11	DA	OP2-P-O3'	5.26	116.78	105.20

There are no chirality outliers.

There are no planarity outliers.

5.2 Too-close contacts ⓘ

In the following table, the Non-H and H(model) columns list the number of non-hydrogen atoms and hydrogen atoms in the chain respectively. The H(added) column lists the number of hydrogen atoms added and optimized by MolProbity. The Clashes column lists the number of clashes within the asymmetric unit, whereas Symm-Clashes lists symmetry related clashes.

Mol	Chain	Non-H	H(model)	H(added)	Clashes	Symm-Clashes
1	A	3721	0	3669	73	0
2	C	222	0	128	16	0
3	D	268	0	148	16	0
4	P	44	0	48	5	0
5	A	26	0	19	3	0
6	A	4	0	0	0	0
7	A	251	0	0	5	0
7	C	18	0	0	0	0
7	D	15	0	0	3	0
7	P	1	0	0	0	0
All	All	4570	0	4012	105	0

The all-atom clashscore is defined as the number of clashes found per 1000 atoms (including hydrogen atoms). The all-atom clashscore for this structure is 13.

All (105) close contacts within the same asymmetric unit are listed below, sorted by their clash magnitude.

Atom-1	Atom-2	Interatomic distance (Å)	Clash overlap (Å)
1:A:499:CYS:SG	1:A:570:ILE:HG13	1.65	1.35
1:A:456:LYS:HG3	1:A:613:TYR:CE2	1.64	1.31
1:A:351:VAL:HG12	1:A:352:ASP:OD2	1.56	1.06
1:A:456:LYS:CG	1:A:613:TYR:CD2	2.40	1.04
2:C:10:DC:H2"	2:C:11:DA:H5"	1.41	1.00
1:A:456:LYS:HG3	1:A:613:TYR:CD2	1.96	0.98
1:A:456:LYS:CG	1:A:613:TYR:CE2	2.45	0.98
1:A:354:SER:H	1:A:355:PRO:HD3	1.30	0.97
1:A:499:CYS:SG	1:A:570:ILE:CG1	2.53	0.97
1:A:456:LYS:HG3	1:A:613:TYR:HE2	1.14	0.95
2:C:10:DC:C2'	2:C:11:DA:H5"	1.96	0.94
2:C:10:DC:H2"	2:C:11:DA:C5'	1.98	0.93
1:A:354:SER:N	1:A:355:PRO:HD3	1.79	0.91
2:C:11:DA:H5"	2:C:11:DA:C8	2.05	0.91
1:A:456:LYS:CG	1:A:613:TYR:HD2	1.84	0.88
3:D:15:DT:C7	7:D:114:HOH:O	2.21	0.86
3:D:15:DT:H71	7:D:114:HOH:O	1.75	0.86

Continued on next page...

Continued from previous page...

Atom-1	Atom-2	Interatomic distance (Å)	Clash overlap (Å)
1:A:456:LYS:HG2	1:A:613:TYR:HD2	1.41	0.85
1:A:332:VAL:HG12	1:A:357:SER:HB2	1.58	0.84
1:A:601:HIS:HB3	1:A:603:PRO:HB3	1.58	0.83
3:D:5:DA:H2''	3:D:6:DT:O5'	1.76	0.83
2:C:11:DA:H8	2:C:11:DA:C5'	1.92	0.81
1:A:351:VAL:CG1	1:A:352:ASP:OD2	2.30	0.80
2:C:11:DA:C5'	2:C:11:DA:C8	2.64	0.79
1:A:354:SER:N	1:A:355:PRO:CD	2.46	0.79
1:A:353:ASP:O	1:A:354:SER:CB	2.30	0.79
3:D:4:DG:H2''	3:D:5:DA:O5'	1.82	0.77
1:A:499:CYS:HG	1:A:570:ILE:HG13	1.48	0.77
3:D:4:DG:H1'	3:D:5:DA:H5'	1.67	0.77
1:A:613:TYR:O	1:A:613:TYR:CG	2.38	0.76
1:A:269:THR:HG23	7:A:1120:HOH:O	1.85	0.75
2:C:10:DC:H6	2:C:10:DC:H3'	1.55	0.72
3:D:10:DT:H2'	3:D:11:DA:C8	2.26	0.71
3:D:10:DT:H4'	3:D:11:DA:OP1	1.88	0.71
1:A:601:HIS:O	1:A:603:PRO:HG3	1.92	0.70
1:A:499:CYS:HB3	1:A:562:CYS:SG	2.32	0.69
1:A:269:THR:CG2	7:A:1120:HOH:O	2.41	0.66
2:C:10:DC:H2'	2:C:11:DA:H5''	1.77	0.66
1:A:594:GLY:HA3	4:P:11:THR:HG23	1.77	0.65
1:A:353:ASP:O	1:A:354:SER:HB3	1.94	0.65
1:A:604:ASP:OD1	1:A:606:LYS:HB3	1.96	0.64
1:A:456:LYS:CG	1:A:613:TYR:HE2	1.96	0.64
1:A:594:GLY:HA3	4:P:11:THR:CG2	2.31	0.61
1:A:456:LYS:CD	1:A:613:TYR:CE2	2.84	0.60
1:A:262:HIS:O	1:A:271:ARG:HG3	2.02	0.60
1:A:456:LYS:O	5:A:801:SAH:N	2.33	0.59
2:C:10:DC:H3'	2:C:10:DC:C6	2.38	0.57
2:C:11:DA:H8	2:C:11:DA:H5'	1.69	0.57
1:A:619:CYS:C	1:A:621:LYS:H	2.08	0.57
1:A:456:LYS:CD	1:A:613:TYR:CD2	2.87	0.56
1:A:351:VAL:HG12	1:A:352:ASP:CG	2.25	0.56
1:A:602:GLY:N	1:A:603:PRO:HA	2.19	0.56
1:A:456:LYS:HG2	1:A:613:TYR:CD2	2.23	0.56
2:C:10:DC:H2''	2:C:11:DA:O5'	2.06	0.55
3:D:5:DA:C2'	3:D:6:DT:O5'	2.52	0.55
4:P:14:LYS:O	4:P:15:ALA:C	2.46	0.54
3:D:4:DG:C8	3:D:4:DG:H5''	2.43	0.54
1:A:613:TYR:O	1:A:613:TYR:CD1	2.61	0.53

Continued on next page...

Continued from previous page...

Atom-1	Atom-2	Interatomic distance (Å)	Clash overlap (Å)
1:A:354:SER:H	1:A:355:PRO:CD	2.07	0.52
1:A:450:VAL:HG22	1:A:460:VAL:HG22	1.92	0.52
2:C:10:DC:C3'	2:C:10:DC:C6	2.93	0.52
1:A:255:PRO:HB3	1:A:303:LEU:HD11	1.92	0.51
1:A:456:LYS:HD3	1:A:613:TYR:CD2	2.46	0.51
3:D:4:DG:C5'	3:D:4:DG:C8	2.95	0.50
1:A:353:ASP:O	1:A:354:SER:OG	2.30	0.49
1:A:145:ARG:NH1	1:A:185:GLU:OE2	2.45	0.49
1:A:332:VAL:CG1	1:A:357:SER:HB2	2.38	0.49
3:D:9:DG:H2''	3:D:10:DT:OP2	2.11	0.49
1:A:353:ASP:OD2	1:A:353:ASP:O	2.30	0.49
1:A:373:ASN:OD1	1:A:373:ASN:N	2.42	0.49
1:A:613:TYR:CD2	1:A:613:TYR:O	2.66	0.48
1:A:184:MET:O	1:A:187:GLU:HB3	2.12	0.48
1:A:603:PRO:C	1:A:605:GLY:H	2.16	0.48
2:C:10:DC:C2'	2:C:11:DA:C5'	2.71	0.47
1:A:595:TYR:HH	4:P:9:LYS:N	2.12	0.47
1:A:493:TYR:OH	5:A:801:SAH:O	2.25	0.47
1:A:456:LYS:HE2	1:A:613:TYR:CE2	2.50	0.47
1:A:271:ARG:NH2	2:C:8:DA:OP2	2.50	0.45
1:A:499:CYS:SG	1:A:570:ILE:O	2.75	0.45
2:C:10:DC:H2'	2:C:11:DA:C8	2.51	0.45
3:D:15:DT:H72	7:D:114:HOH:O	1.99	0.44
1:A:159:ARG:HG2	1:A:274:THR:HG22	1.99	0.44
3:D:4:DG:H2''	3:D:5:DA:C5'	2.46	0.44
1:A:176:LEU:HD21	1:A:227:LEU:HD11	1.98	0.44
3:D:4:DG:H8	3:D:4:DG:C5'	2.29	0.44
1:A:595:TYR:N	7:A:1051:HOH:O	2.45	0.44
1:A:610:LEU:HB2	1:A:624:TYR:CE1	2.53	0.43
1:A:418:SER:HB3	4:P:14:LYS:HB2	2.02	0.42
5:A:801:SAH:H5'2	5:A:801:SAH:H8	2.01	0.42
1:A:176:LEU:HD12	2:C:8:DA:H5''	2.01	0.42
1:A:619:CYS:O	1:A:621:LYS:N	2.52	0.42
1:A:353:ASP:OD2	1:A:353:ASP:C	2.56	0.42
1:A:347:ALA:HA	1:A:450:VAL:O	2.19	0.42
1:A:481:ARG:HD2	7:A:1041:HOH:O	2.20	0.42
1:A:481:ARG:NH2	1:A:484:ASP:OD2	2.53	0.42
3:D:10:DT:C2'	3:D:11:DA:C8	3.01	0.42
1:A:393:LYS:HE3	1:A:393:LYS:HB3	1.78	0.42
3:D:10:DT:H2'	3:D:11:DA:N7	2.34	0.41
1:A:311:THR:O	1:A:312:ASP:HB2	2.20	0.41

Continued on next page...

Continued from previous page...

Atom-1	Atom-2	Interatomic distance (Å)	Clash overlap (Å)
1:A:456:LYS:HE2	1:A:613:TYR:HE2	1.85	0.41
1:A:172:HIS:CE1	1:A:180:ASP:HB2	2.54	0.41
1:A:602:GLY:N	1:A:603:PRO:CA	2.81	0.41
1:A:227:LEU:HB2	7:A:1064:HOH:O	2.20	0.41
1:A:99:LEU:CD1	1:A:100:GLU:H	2.34	0.41
1:A:125:SER:O	1:A:126:ARG:C	2.59	0.41

There are no symmetry-related clashes.

5.3 Torsion angles [i](#)

5.3.1 Protein backbone [i](#)

In the following table, the Percentiles column shows the percent Ramachandran outliers of the chain as a percentile score with respect to all X-ray entries followed by that with respect to entries of similar resolution.

The Analysed column shows the number of residues for which the backbone conformation was analysed, and the total number of residues.

Mol	Chain	Analysed	Favoured	Allowed	Outliers	Percentiles	
1	A	464/533 (87%)	448 (97%)	12 (3%)	4 (1%)	21	13
4	P	5/15 (33%)	4 (80%)	1 (20%)	0	100	100
All	All	469/548 (86%)	452 (96%)	13 (3%)	4 (1%)	21	13

All (4) Ramachandran outliers are listed below:

Mol	Chain	Res	Type
1	A	354	SER
1	A	620	ARG
1	A	603	PRO
1	A	214	ALA

5.3.2 Protein sidechains [i](#)

In the following table, the Percentiles column shows the percent sidechain outliers of the chain as a percentile score with respect to all X-ray entries followed by that with respect to entries of similar resolution.

The Analysed column shows the number of residues for which the sidechain conformation was

analysed, and the total number of residues.

Mol	Chain	Analysed	Rotameric	Outliers	Percentiles	
1	A	409/461 (89%)	378 (92%)	31 (8%)	16	10
4	P	4/10 (40%)	2 (50%)	2 (50%)	0	0
All	All	413/471 (88%)	380 (92%)	33 (8%)	15	9

All (33) residues with a non-rotameric sidechain are listed below:

Mol	Chain	Res	Type
1	A	99	LEU
1	A	103	LEU
1	A	111	LEU
1	A	187	GLU
1	A	271	ARG
1	A	282	GLU
1	A	308	GLU
1	A	331	LEU
1	A	334	GLU
1	A	350	ARG
1	A	351	VAL
1	A	356	VAL
1	A	380	SER
1	A	404	ASN
1	A	455	LYS
1	A	464	GLU
1	A	481	ARG
1	A	485	VAL
1	A	499	CYS
1	A	548	ARG
1	A	568	GLN
1	A	572	LEU
1	A	597	LEU
1	A	599	SER
1	A	600	VAL
1	A	604	ASP
1	A	606	LYS
1	A	610	LEU
1	A	613	TYR
1	A	620	ARG
1	A	623	LEU
4	P	10	SER
4	P	11	THR

Some sidechains can be flipped to improve hydrogen bonding and reduce clashes. There are no such sidechains identified.

5.3.3 RNA ⓘ

There are no RNA molecules in this entry.

5.4 Non-standard residues in protein, DNA, RNA chains ⓘ

1 non-standard protein/DNA/RNA residue is modelled in this entry.

In the following table, the Counts columns list the number of bonds (or angles) for which Mogul statistics could be retrieved, the number of bonds (or angles) that are observed in the model and the number of bonds (or angles) that are defined in the chemical component dictionary. The Link column lists molecule types, if any, to which the group is linked. The Z score for a bond length (or angle) is the number of standard deviations the observed value is removed from the expected value. A bond length (or angle) with $|Z| > 2$ is considered an outlier worth inspection. RMSZ is the root-mean-square of all Z scores of the bond lengths (or angles).

Mol	Type	Chain	Res	Link	Bond lengths			Bond angles		
					Counts	RMSZ	# Z > 2	Counts	RMSZ	# Z > 2
2	5CM	C	7	2	13,21,22	1.55	3 (23%)	17,30,33	1.64	4 (23%)

In the following table, the Chirals column lists the number of chiral outliers, the number of chiral centers analysed, the number of these observed in the model and the number defined in the chemical component dictionary. Similar counts are reported in the Torsion and Rings columns. '-' means no outliers of that kind were identified.

Mol	Type	Chain	Res	Link	Chirals	Torsions	Rings
2	5CM	C	7	2	-	0/3/21/22	0/2/2/2

All (3) bond length outliers are listed below:

Mol	Chain	Res	Type	Atoms	Z	Observed(Å)	Ideal(Å)
2	C	7	5CM	C4-N3	-2.58	1.31	1.35
2	C	7	5CM	C6-N1	-2.48	1.31	1.35
2	C	7	5CM	C5-C4	3.23	1.46	1.41

All (4) bond angle outliers are listed below:

Mol	Chain	Res	Type	Atoms	Z	Observed(°)	Ideal(°)
2	C	7	5CM	C5-C4-N3	-2.09	117.76	121.27
2	C	7	5CM	O5'-C5'-C4'	2.05	116.64	109.12

Continued on next page...

Continued from previous page...

Mol	Chain	Res	Type	Atoms	Z	Observed(°)	Ideal(°)
2	C	7	5CM	C2'-C1'-N1	3.01	121.47	114.16
2	C	7	5CM	N4-C4-N3	3.78	122.42	116.95

There are no chirality outliers.

There are no torsion outliers.

There are no ring outliers.

No monomer is involved in short contacts.

5.5 Carbohydrates [i](#)

There are no carbohydrates in this entry.

5.6 Ligand geometry [i](#)

Of 5 ligands modelled in this entry, 4 are monoatomic - leaving 1 for Mogul analysis.

In the following table, the Counts columns list the number of bonds (or angles) for which Mogul statistics could be retrieved, the number of bonds (or angles) that are observed in the model and the number of bonds (or angles) that are defined in the chemical component dictionary. The Link column lists molecule types, if any, to which the group is linked. The Z score for a bond length (or angle) is the number of standard deviations the observed value is removed from the expected value. A bond length (or angle) with $|Z| > 2$ is considered an outlier worth inspection. RMSZ is the root-mean-square of all Z scores of the bond lengths (or angles).

Mol	Type	Chain	Res	Link	Bond lengths			Bond angles		
					Counts	RMSZ	# Z > 2	Counts	RMSZ	# Z > 2
5	SAH	A	801	-	20,28,28	1.12	2 (10%)	19,40,40	3.05	3 (15%)

In the following table, the Chirals column lists the number of chiral outliers, the number of chiral centers analysed, the number of these observed in the model and the number defined in the chemical component dictionary. Similar counts are reported in the Torsion and Rings columns. '-' means no outliers of that kind were identified.

Mol	Type	Chain	Res	Link	Chirals	Torsions	Rings
5	SAH	A	801	-	-	0/7/31/31	0/3/3/3

All (2) bond length outliers are listed below:

Mol	Chain	Res	Type	Atoms	Z	Observed(Å)	Ideal(Å)
5	A	801	SAH	C2-N1	2.50	1.38	1.33

Continued on next page...

Continued from previous page...

Mol	Chain	Res	Type	Atoms	Z	Observed(Å)	Ideal(Å)
5	A	801	SAH	C2-N3	3.59	1.38	1.32

All (3) bond angle outliers are listed below:

Mol	Chain	Res	Type	Atoms	Z	Observed(°)	Ideal(°)
5	A	801	SAH	N3-C2-N1	-11.72	119.92	128.89
5	A	801	SAH	C2'-C1'-N9	-4.50	107.42	114.29
5	A	801	SAH	C5'-SD-CG	-2.89	93.73	102.41

There are no chirality outliers.

There are no torsion outliers.

There are no ring outliers.

1 monomer is involved in 3 short contacts:

Mol	Chain	Res	Type	Clashes	Symm-Clashes
5	A	801	SAH	3	0

5.7 Other polymers [i](#)

There are no such residues in this entry.

5.8 Polymer linkage issues [i](#)

There are no chain breaks in this entry.

6 Fit of model and data

6.1 Protein, DNA and RNA chains

In the following table, the column labelled ‘#RSRZ> 2’ contains the number (and percentage) of RSRZ outliers, followed by percent RSRZ outliers for the chain as percentile scores relative to all X-ray entries and entries of similar resolution. The OWAB column contains the minimum, median, 95th percentile and maximum values of the occupancy-weighted average B-factor per residue. The column labelled ‘Q< 0.9’ lists the number of (and percentage) of residues with an average occupancy less than 0.9.

Mol	Chain	Analysed	<RSRZ>	#RSRZ>2	OWAB(Å ²)	Q<0.9
1	A	472/533 (88%)	0.59	56 (11%) 6 6	18, 43, 111, 204	0
2	C	10/15 (66%)	-0.16	0 100 100	32, 50, 82, 115	0
3	D	13/15 (86%)	0.04	0 100 100	39, 67, 94, 111	0
4	P	7/15 (46%)	1.66	2 (28%) 1 1	86, 96, 100, 108	0
All	All	502/578 (86%)	0.57	58 (11%) 6 7	18, 44, 111, 204	0

All (58) RSRZ outliers are listed below:

Mol	Chain	Res	Type	RSRZ
1	A	613	TYR	12.2
1	A	597	LEU	7.8
1	A	618	ASN	7.6
1	A	603	PRO	7.5
1	A	624	TYR	7.1
1	A	610	LEU	7.1
1	A	354	SER	6.6
1	A	356	VAL	6.5
1	A	606	LYS	6.5
1	A	622	ARG	6.4
1	A	600	VAL	6.2
1	A	602	GLY	6.2
1	A	599	SER	6.1
1	A	312	ASP	6.1
1	A	601	HIS	5.9
1	A	607	VAL	5.8
1	A	605	GLY	5.3
1	A	623	LEU	5.2
1	A	311	THR	5.1
1	A	598	ASP	5.0
1	A	596	ALA	4.5

Continued on next page...

Continued from previous page...

Mol	Chain	Res	Type	RSRZ
1	A	604	ASP	4.2
1	A	609	GLN	4.1
1	A	595	TYR	4.0
1	A	355	PRO	4.0
1	A	617	LEU	4.0
1	A	455	LYS	4.0
1	A	400	LEU	3.8
1	A	392	SER	3.8
1	A	621	LYS	3.8
1	A	616	ALA	3.7
1	A	608	LYS	3.6
1	A	353	ASP	3.6
1	A	393	LYS	3.4
1	A	267	SER	3.3
1	A	620	ARG	3.3
4	P	15	ALA	3.1
1	A	328	ILE	2.9
1	A	499	CYS	2.9
4	P	14	LYS	2.9
1	A	310	THR	2.9
1	A	351	VAL	2.8
1	A	612	CYS	2.8
1	A	265	LYS	2.6
1	A	491	ASN	2.6
1	A	611	ALA	2.5
1	A	349	ASN	2.4
1	A	394	LYS	2.4
1	A	352	ASP	2.4
1	A	619	CYS	2.3
1	A	347	ALA	2.3
1	A	614	CYS	2.3
1	A	329	GLU	2.3
1	A	332	VAL	2.3
1	A	579	ALA	2.3
1	A	350	ARG	2.2
1	A	266	SER	2.2
1	A	99	LEU	2.0

6.2 Non-standard residues in protein, DNA, RNA chains ⓘ

In the following table, the Atoms column lists the number of modelled atoms in the group and the number defined in the chemical component dictionary. LLDF column lists the quality of electron

density of the group with respect to its neighbouring residues in protein, DNA or RNA chains. The B-factors column lists the minimum, median, 95th percentile and maximum values of B factors of atoms in the group. The column labelled 'Q< 0.9' lists the number of atoms with occupancy less than 0.9.

Mol	Type	Chain	Res	Atoms	RSCC	RSR	LLDF	B-factors(Å ²)	Q<0.9
2	5CM	C	7	20/21	0.98	0.11	-	20,25,27,28	0

6.3 Carbohydrates [i](#)

There are no carbohydrates in this entry.

6.4 Ligands [i](#)

In the following table, the Atoms column lists the number of modelled atoms in the group and the number defined in the chemical component dictionary. LLDF column lists the quality of electron density of the group with respect to its neighbouring residues in protein, DNA or RNA chains. The B-factors column lists the minimum, median, 95th percentile and maximum values of B factors of atoms in the group. The column labelled 'Q< 0.9' lists the number of atoms with occupancy less than 0.9.

Mol	Type	Chain	Res	Atoms	RSCC	RSR	LLDF	B-factors(Å ²)	Q<0.9
5	SAH	A	801	26/26	0.79	0.27	0.32	59,79,85,86	0
6	ZN	A	803	1/1	0.99	0.08	-0.45	36,36,36,36	0
6	ZN	A	802	1/1	0.99	0.06	-1.13	38,38,38,38	0
6	ZN	A	805	1/1	0.93	0.09	-1.13	62,62,62,62	0
6	ZN	A	804	1/1	0.98	0.04	-2.31	42,42,42,42	0

6.5 Other polymers [i](#)

There are no such residues in this entry.