



wwPDB X-ray Structure Validation Summary Report ⓘ

Jan 31, 2016 – 09:50 PM GMT

PDB ID : 1QSG
Title : CRYSTAL STRUCTURE OF ENOYL REDUCTASE INHIBITION BY TRI-CLOSAN
Authors : Stewart, M.J.; Parikh, S.; Xiao, G.; Tonge, P.J.; Kisker, C.
Deposited on : 1999-06-21
Resolution : 1.75 Å(reported)

This is a wwPDB X-ray Structure Validation Summary Report for a publicly released PDB entry.
We welcome your comments at validation@mail.wwpdb.org
A user guide is available at
<http://wwpdb.org/validation/2016/XrayValidationReportHelp>
with specific help available everywhere you see the ⓘ symbol.

The following versions of software and data (see [references ⓘ](#)) were used in the production of this report:

MolProbity : 4.02b-467
Mogul : 1.7 (RC4), CSD as536be (2015)
Xtriage (Phenix) : **NOT EXECUTED**
EDS : **NOT EXECUTED**
Percentile statistics : 20151230.v01 (using entries in the PDB archive December 30th 2015)
Ideal geometry (proteins) : Engh & Huber (2001)
Ideal geometry (DNA, RNA) : Parkinson et al. (1996)
Validation Pipeline (wwPDB-VP) : trunk26865

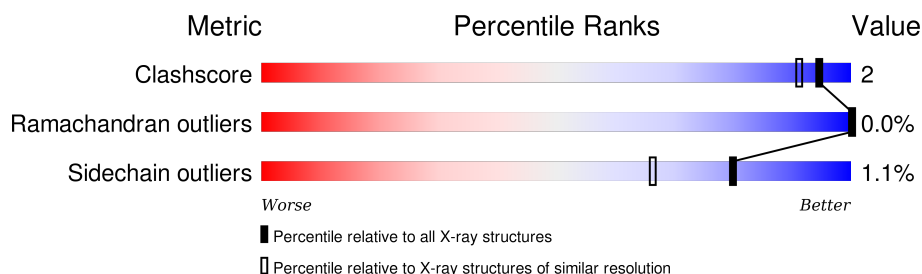
1 Overall quality at a glance

The following experimental techniques were used to determine the structure:

X-RAY DIFFRACTION

The reported resolution of this entry is 1.75 Å.

Percentile scores (ranging between 0-100) for global validation metrics of the entry are shown in the following graphic. The table shows the number of entries on which the scores are based.



Metric	Whole archive (#Entries)	Similar resolution (#Entries, resolution range(Å))
Clashscore	102246	1730 (1.76-1.76)
Ramachandran outliers	100387	1711 (1.76-1.76)
Sidechain outliers	100360	1711 (1.76-1.76)


The table below summarises the geometric issues observed across the polymeric chains and their fit to the electron density. The red, orange, yellow and green segments on the lower bar indicate the fraction of residues that contain outliers for ≥ 3 , 2, 1 and 0 types of geometric quality criteria. A grey segment represents the fraction of residues that are not modelled. The numeric value for each fraction is indicated below the corresponding segment, with a dot representing fractions $\leq 5\%$. The upper red bar (where present) indicates the fraction of residues that have poor fit to the electron density. The numeric value is given above the bar.

Note EDS was not executed.

Mol	Chain	Length	Quality of chain
1	A	265	
1	B	265	
1	C	265	
1	D	265	
1	E	265	
1	F	265	
1	G	265	

Continued on next page...

Continued from previous page...

Mol	Chain	Length	Quality of chain
1	H	265	 92% 5%

The following table lists non-polymeric compounds, carbohydrate monomers and non-standard residues in protein, DNA, RNA chains that are outliers for geometric or electron-density-fit criteria:

Mol	Type	Chain	Res	Chirality	Geometry	Clashes	Electron density
2	GLC	A	1303	X	-	-	-
2	GLC	B	1306	X	-	-	-
2	GLC	C	1309	X	-	-	-
2	GLC	D	1312	X	-	-	-
2	GLC	E	1315	X	-	-	-
2	GLC	F	1318	X	-	-	-
2	GLC	G	1321	X	-	-	-
2	GLC	H	1324	X	-	-	-

2 Entry composition

There are 5 unique types of molecules in this entry. The entry contains 17287 atoms, of which 0 are hydrogens and 0 are deuteriums.

In the tables below, the ZeroOcc column contains the number of atoms modelled with zero occupancy, the AltConf column contains the number of residues with at least one atom in alternate conformation and the Trace column contains the number of residues modelled with at most 2 atoms.

- Molecule 1 is a protein called ENOYL-[ACYL-CARRIER-PROTEIN] REDUCTASE.

Mol	Chain	Residues	Atoms					ZeroOcc	AltConf	Trace
1	A	258	Total	C	N	O	S	0	0	0
			1918	1209	331	365	13			
1	B	258	Total	C	N	O	S	0	0	0
			1918	1209	331	365	13			
1	C	258	Total	C	N	O	S	0	0	0
			1918	1209	331	365	13			
1	D	258	Total	C	N	O	S	0	0	0
			1918	1209	331	365	13			
1	E	258	Total	C	N	O	S	0	0	0
			1918	1209	331	365	13			
1	F	258	Total	C	N	O	S	0	0	0
			1918	1209	331	365	13			
1	G	259	Total	C	N	O	S	0	0	0
			1927	1214	332	368	13			
1	H	258	Total	C	N	O	S	0	0	0
			1918	1209	331	365	13			

There are 24 discrepancies between the modelled and reference sequences:

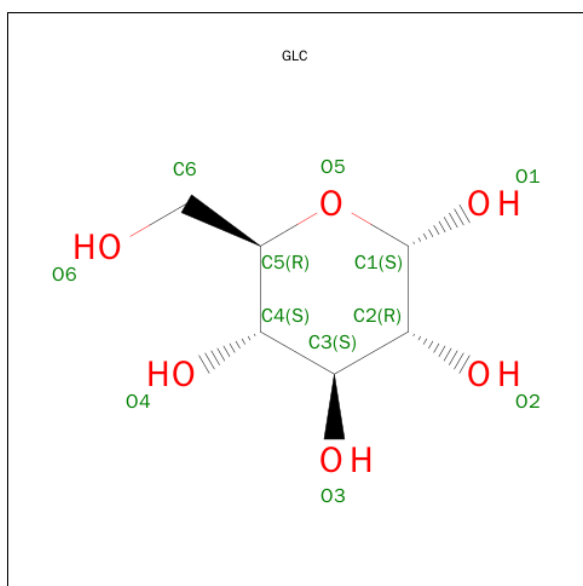
Chain	Residue	Modelled	Actual	Comment	Reference
A	-2	GLY	-	EXPRESSION TAG	UNP P29132
A	-1	SER	-	EXPRESSION TAG	UNP P29132
A	0	HIS	-	EXPRESSION TAG	UNP P29132
B	-2	GLY	-	EXPRESSION TAG	UNP P29132
B	-1	SER	-	EXPRESSION TAG	UNP P29132
B	0	HIS	-	EXPRESSION TAG	UNP P29132
C	-2	GLY	-	EXPRESSION TAG	UNP P29132
C	-1	SER	-	EXPRESSION TAG	UNP P29132
C	0	HIS	-	EXPRESSION TAG	UNP P29132
D	-2	GLY	-	EXPRESSION TAG	UNP P29132
D	-1	SER	-	EXPRESSION TAG	UNP P29132
D	0	HIS	-	EXPRESSION TAG	UNP P29132
E	-2	GLY	-	EXPRESSION TAG	UNP P29132

Continued on next page...

Continued from previous page...

Chain	Residue	Modelled	Actual	Comment	Reference
E	-1	SER	-	EXPRESSION TAG	UNP P29132
E	0	HIS	-	EXPRESSION TAG	UNP P29132
F	-2	GLY	-	EXPRESSION TAG	UNP P29132
F	-1	SER	-	EXPRESSION TAG	UNP P29132
F	0	HIS	-	EXPRESSION TAG	UNP P29132
G	-2	GLY	-	EXPRESSION TAG	UNP P29132
G	-1	SER	-	EXPRESSION TAG	UNP P29132
G	0	HIS	-	EXPRESSION TAG	UNP P29132
H	-2	GLY	-	EXPRESSION TAG	UNP P29132
H	-1	SER	-	EXPRESSION TAG	UNP P29132
H	0	HIS	-	EXPRESSION TAG	UNP P29132

- Molecule 2 is SUGAR (GLUCOSE) (three-letter code: GLC) (formula: $C_6H_{12}O_6$).



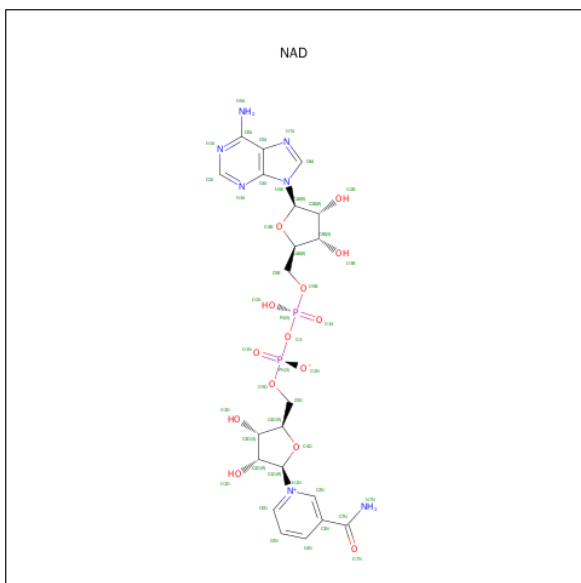
Mol	Chain	Residues	Atoms	ZeroOcc	AltConf
2	A	1	Total C O 12 6 6	0	0
2	B	1	Total C O 12 6 6	0	0
2	C	1	Total C O 12 6 6	0	0
2	D	1	Total C O 12 6 6	0	0
2	E	1	Total C O 12 6 6	0	0
2	F	1	Total C O 12 6 6	0	0

Continued on next page...

Continued from previous page...

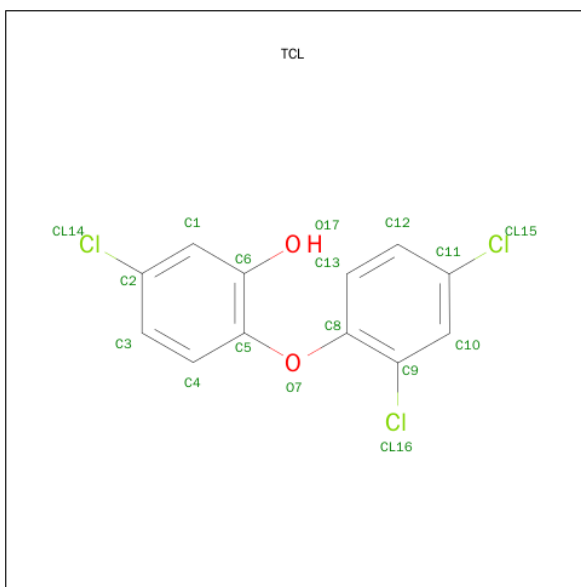
Mol	Chain	Residues	Atoms			ZeroOcc	AltConf
2	G	1	Total	C	O	0	0
			12	6	6		
2	H	1	Total	C	O	0	0
			12	6	6		

- Molecule 3 is NICOTINAMIDE-ADENINE-DINUCLEOTIDE (three-letter code: NAD) (formula: $C_{21}H_{27}N_7O_{14}P_2$).



Mol	Chain	Residues	Atoms					ZeroOcc	AltConf
3	A	1	Total	C	N	O	P	0	0
			44	21	7	14	2		
3	B	1	Total	C	N	O	P	0	0
			44	21	7	14	2		
3	C	1	Total	C	N	O	P	0	0
			44	21	7	14	2		
3	D	1	Total	C	N	O	P	0	0
			44	21	7	14	2		
3	E	1	Total	C	N	O	P	0	0
			44	21	7	14	2		
3	F	1	Total	C	N	O	P	0	0
			44	21	7	14	2		
3	G	1	Total	C	N	O	P	0	0
			44	21	7	14	2		
3	H	1	Total	C	N	O	P	0	0
			44	21	7	14	2		

- Molecule 4 is TRICLOSAN (three-letter code: TCL) (formula: $C_{12}H_7Cl_3O_2$).



Mol	Chain	Residues	Atoms				ZeroOcc	AltConf
4	A	1	Total	C	Cl	O	0	0
			17	12	3	2		
4	B	1	Total	C	Cl	O	0	0
			17	12	3	2		
4	C	1	Total	C	Cl	O	0	0
			17	12	3	2		
4	D	1	Total	C	Cl	O	0	0
			17	12	3	2		
4	E	1	Total	C	Cl	O	0	0
			17	12	3	2		
4	F	1	Total	C	Cl	O	0	0
			17	12	3	2		
4	G	1	Total	C	Cl	O	0	0
			17	12	3	2		
4	H	1	Total	C	Cl	O	0	0
			17	12	3	2		

- Molecule 5 is water.

Mol	Chain	Residues	Atoms		ZeroOcc	AltConf
5	A	214	Total	O	0	0
			214	214		
5	B	165	Total	O	0	0
			165	165		
5	C	177	Total	O	0	0
			177	177		
5	D	180	Total	O	0	0
			180	180		

Continued on next page...

Continued from previous page...


Mol	Chain	Residues	Atoms		ZeroOcc	AltConf
5	E	144	Total 144	O 144	0	0
5	F	132	Total 132	O 132	0	0
5	G	188	Total 188	O 188	0	0
5	H	150	Total 150	O 150	0	0

3 Residue-property plots [i](#)

These plots are drawn for all protein, RNA and DNA chains in the entry. The first graphic for a chain summarises the proportions of errors displayed in the second graphic. The second graphic shows the sequence view annotated by issues in geometry and electron density. Residues are color-coded according to the number of geometric quality criteria for which they contain at least one outlier: green = 0, yellow = 1, orange = 2 and red = 3 or more. A red dot above a residue indicates a poor fit to the electron density ($RSRZ > 2$). Stretches of 2 or more consecutive residues without any outlier are shown as a green connector. Residues present in the sample, but not in the model, are shown in grey.

Note EDS was not executed.

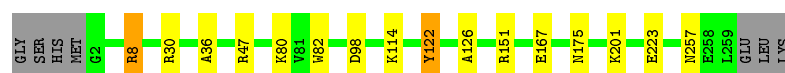
• Molecule 1: ENOYL-[ACYL-CARRIER-PROTEIN] REDUCTASE

Chain A: 



• Molecule 1: ENOYL-[ACYL-CARRIER-PROTEIN] REDUCTASE

Chain B: 



• Molecule 1: ENOYL-[ACYL-CARRIER-PROTEIN] REDUCTASE

Chain C: 




• Molecule 1: ENOYL-[ACYL-CARRIER-PROTEIN] REDUCTASE

Chain D: 




• Molecule 1: ENOYL-[ACYL-CARRIER-PROTEIN] REDUCTASE

Chain E: 



• Molecule 1: ENOYL-[ACYL-CARRIER-PROTEIN] REDUCTASE

Chain F:  88% 8% ..



- Molecule 1: ENOYL-[ACYL-CARRIER-PROTEIN] REDUCTASE

Chain G:  91% 5% ..



- Molecule 1: ENOYL-[ACYL-CARRIER-PROTEIN] REDUCTASE

Chain H:  92% 5% .



4 Data and refinement statistics

Xtriage (Phenix) and EDS were not executed - this section will therefore be incomplete.

Property	Value	Source
Space group	P 1	Depositor
Cell constants a, b, c, α , β , γ	73.73 Å 82.08 Å 84.18 Å 89.54° 87.43° 77.77°	Depositor
Resolution (Å)	20.00 – 1.75	Depositor
% Data completeness (in resolution range)	94.2 (20.00-1.75)	Depositor
R_{merge}	0.04	Depositor
R_{sym}	(Not available)	Depositor
Refinement program	REFMAC	Depositor
R, R_{free}	0.172 , 0.215	Depositor
Estimated twinning fraction	No twinning to report.	Xtriage
Total number of atoms	17287	wwPDB-VP
Average B, all atoms (Å ²)	27.0	wwPDB-VP

5 Model quality [i](#)

5.1 Standard geometry [i](#)

Bond lengths and bond angles in the following residue types are not validated in this section: TCL, GLC, NAD

The Z score for a bond length (or angle) is the number of standard deviations the observed value is removed from the expected value. A bond length (or angle) with $|Z| > 5$ is considered an outlier worth inspection. RMSZ is the root-mean-square of all Z scores of the bond lengths (or angles).

Mol	Chain	Bond lengths		Bond angles	
		RMSZ	$\# Z > 5$	RMSZ	$\# Z > 5$
1	A	0.72	0/1950	1.26	12/2634 (0.5%)
1	B	0.65	0/1950	1.20	10/2634 (0.4%)
1	C	0.66	0/1950	1.23	12/2634 (0.5%)
1	D	0.65	0/1950	1.17	6/2634 (0.2%)
1	E	0.56	0/1950	1.09	4/2634 (0.2%)
1	F	0.57	0/1950	1.21	13/2634 (0.5%)
1	G	0.61	0/1959	1.21	11/2646 (0.4%)
1	H	0.60	0/1950	1.15	9/2634 (0.3%)
All	All	0.63	0/15609	1.19	77/21084 (0.4%)

There are no bond length outliers.

The worst 5 of 77 bond angle outliers are listed below:

Mol	Chain	Res	Type	Atoms	Z	Observed(°)	Ideal(°)
1	G	110	ARG	NE-CZ-NH1	11.10	125.85	120.30
1	D	98	ASP	CB-CG-OD1	11.03	128.23	118.30
1	C	8	ARG	NE-CZ-NH1	10.99	125.80	120.30
1	F	193	ARG	NE-CZ-NH1	10.90	125.75	120.30
1	A	151	ARG	NE-CZ-NH1	10.72	125.66	120.30

There are no chirality outliers.

There are no planarity outliers.

5.2 Too-close contacts [i](#)

In the following table, the Non-H and H(model) columns list the number of non-hydrogen atoms and hydrogen atoms in the chain respectively. The H(added) column lists the number of hydrogen atoms added and optimized by MolProbity. The Clashes column lists the number of clashes within the asymmetric unit, whereas Symm-Clashes lists symmetry related clashes.

Mol	Chain	Non-H	H(model)	H(added)	Clashes	Symm-Clashes
1	A	1918	0	1909	9	0
1	B	1918	0	1909	7	0
1	C	1918	0	1909	4	0
1	D	1918	0	1909	8	0
1	E	1918	0	1909	13	0
1	F	1918	0	1909	9	0
1	G	1927	0	1915	9	0
1	H	1918	0	1909	4	0
2	A	12	0	12	0	0
2	B	12	0	12	0	0
2	C	12	0	12	0	0
2	D	12	0	12	1	0
2	E	12	0	12	0	0
2	F	12	0	12	0	0
2	G	12	0	11	0	0
2	H	12	0	12	0	0
3	A	44	0	26	0	0
3	B	44	0	25	0	0
3	C	44	0	25	0	0
3	D	44	0	26	0	0
3	E	44	0	24	2	0
3	F	44	0	25	0	0
3	G	44	0	25	0	0
3	H	44	0	25	0	0
4	A	17	0	7	0	0
4	B	17	0	7	0	0
4	C	17	0	7	0	0
4	D	17	0	7	0	0
4	E	17	0	7	1	0
4	F	17	0	7	0	0
4	G	17	0	7	0	0
4	H	17	0	7	0	0
5	A	214	0	0	1	0
5	B	165	0	0	2	0
5	C	177	0	0	2	0
5	D	180	0	0	2	0
5	E	144	0	0	1	0
5	F	132	0	0	2	0
5	G	188	0	0	3	0
5	H	150	0	0	1	0
All	All	17287	0	15630	54	0

The all-atom clashscore is defined as the number of clashes found per 1000 atoms (including hydrogen atoms). The all-atom clashscore for this structure is 2.

The worst 5 of 54 close contacts within the same asymmetric unit are listed below, sorted by their clash magnitude.

Atom-1	Atom-2	Interatomic distance (Å)	Clash overlap (Å)
1:E:259:LEU:HD22	1:H:205:LYS:HD3	1.60	0.83
1:E:257:ASN:HD21	1:G:175:ASN:HD21	1.31	0.78
1:B:175:ASN:HD21	1:D:257:ASN:HD21	1.34	0.76
1:E:175:ASN:HD21	1:G:257:ASN:HD21	1.33	0.76
1:G:213:VAL:HG11	1:G:258:GLU:HG3	1.71	0.71

There are no symmetry-related clashes.

5.3 Torsion angles [i](#)

5.3.1 Protein backbone [i](#)

In the following table, the Percentiles column shows the percent Ramachandran outliers of the chain as a percentile score with respect to all X-ray entries followed by that with respect to entries of similar resolution.

The Analysed column shows the number of residues for which the backbone conformation was analysed, and the total number of residues.

Mol	Chain	Analysed	Favoured	Allowed	Outliers	Percentiles	
1	A	256/265 (97%)	250 (98%)	6 (2%)	0	100	100
1	B	256/265 (97%)	249 (97%)	7 (3%)	0	100	100
1	C	256/265 (97%)	250 (98%)	6 (2%)	0	100	100
1	D	256/265 (97%)	250 (98%)	6 (2%)	0	100	100
1	E	256/265 (97%)	249 (97%)	6 (2%)	1 (0%)	39	19
1	F	256/265 (97%)	247 (96%)	9 (4%)	0	100	100
1	G	257/265 (97%)	251 (98%)	6 (2%)	0	100	100
1	H	256/265 (97%)	245 (96%)	11 (4%)	0	100	100
All	All	2049/2120 (97%)	1991 (97%)	57 (3%)	1 (0%)	100	100

All (1) Ramachandran outliers are listed below:

Mol	Chain	Res	Type
1	E	258	GLU

5.3.2 Protein sidechains ⓘ

In the following table, the Percentiles column shows the percent sidechain outliers of the chain as a percentile score with respect to all X-ray entries followed by that with respect to entries of similar resolution.

The Analysed column shows the number of residues for which the sidechain conformation was analysed, and the total number of residues.

Mol	Chain	Analysed	Rotameric	Outliers	Percentiles	
1	A	197/203 (97%)	196 (100%)	1 (0%)	92	87
1	B	197/203 (97%)	195 (99%)	2 (1%)	82	69
1	C	197/203 (97%)	194 (98%)	3 (2%)	72	55
1	D	197/203 (97%)	195 (99%)	2 (1%)	82	69
1	E	197/203 (97%)	196 (100%)	1 (0%)	92	87
1	F	197/203 (97%)	194 (98%)	3 (2%)	72	55
1	G	198/203 (98%)	195 (98%)	3 (2%)	72	55
1	H	197/203 (97%)	195 (99%)	2 (1%)	82	69
All	All	1577/1624 (97%)	1560 (99%)	17 (1%)	80	66

5 of 17 residues with a non-rotameric sidechain are listed below:

Mol	Chain	Res	Type
1	D	114	LYS
1	E	195	LEU
1	G	47	ARG
1	D	62	GLN
1	G	111	GLU

Some sidechains can be flipped to improve hydrogen bonding and reduce clashes. 5 of 16 such sidechains are listed below:

Mol	Chain	Res	Type
1	D	40	GLN
1	D	62	GLN
1	G	257	ASN
1	D	26	GLN
1	H	26	GLN

5.3.3 RNA ⓘ

There are no RNA molecules in this entry.

5.4 Non-standard residues in protein, DNA, RNA chains [i](#)

There are no non-standard protein/DNA/RNA residues in this entry.

5.5 Carbohydrates [i](#)

There are no carbohydrates in this entry.

5.6 Ligand geometry [i](#)

24 ligands are modelled in this entry.

In the following table, the Counts columns list the number of bonds (or angles) for which Mogul statistics could be retrieved, the number of bonds (or angles) that are observed in the model and the number of bonds (or angles) that are defined in the chemical component dictionary. The Link column lists molecule types, if any, to which the group is linked. The Z score for a bond length (or angle) is the number of standard deviations the observed value is removed from the expected value. A bond length (or angle) with $|Z| > 2$ is considered an outlier worth inspection. RMSZ is the root-mean-square of all Z scores of the bond lengths (or angles).

Mol	Type	Chain	Res	Link	Bond lengths			Bond angles		
					Counts	RMSZ	$\# Z > 2$	Counts	RMSZ	$\# Z > 2$
3	NAD	A	1301	-	38,48,48	1.94	10 (26%)	47,73,73	3.14	10 (21%)
4	TCL	A	1302	-	18,18,18	1.10	0	25,25,25	1.11	3 (12%)
2	GLC	A	1303	-	12,12,12	1.12	1 (8%)	17,17,17	3.06	9 (52%)
3	NAD	B	1304	-	38,48,48	1.80	10 (26%)	47,73,73	3.09	12 (25%)
4	TCL	B	1305	-	18,18,18	1.01	1 (5%)	25,25,25	0.99	0
2	GLC	B	1306	-	12,12,12	1.10	1 (8%)	17,17,17	1.69	3 (17%)
3	NAD	C	1307	-	38,48,48	1.91	10 (26%)	47,73,73	2.62	13 (27%)
4	TCL	C	1308	-	18,18,18	1.03	0	25,25,25	1.01	2 (8%)
2	GLC	C	1309	-	12,12,12	1.19	0	17,17,17	1.90	4 (23%)
3	NAD	D	1310	-	38,48,48	1.76	11 (28%)	47,73,73	2.75	12 (25%)
4	TCL	D	1311	-	18,18,18	0.87	0	25,25,25	1.29	3 (12%)
2	GLC	D	1312	-	12,12,12	0.84	1 (8%)	17,17,17	2.27	4 (23%)
3	NAD	E	1313	-	38,48,48	1.92	10 (26%)	47,73,73	3.04	15 (31%)
4	TCL	E	1314	-	18,18,18	0.91	0	25,25,25	0.94	1 (4%)
2	GLC	E	1315	-	12,12,12	1.04	0	17,17,17	2.01	4 (23%)
3	NAD	F	1316	-	38,48,48	1.81	9 (23%)	47,73,73	2.72	13 (27%)
4	TCL	F	1317	-	18,18,18	0.84	0	25,25,25	1.01	0
2	GLC	F	1318	-	12,12,12	0.98	0	17,17,17	2.37	5 (29%)

Mol	Type	Chain	Res	Link	Bond lengths			Bond angles		
					Counts	RMSZ	# Z > 2	Counts	RMSZ	# Z > 2
3	NAD	G	1319	-	38,48,48	2.06	11 (28%)	47,73,73	3.00	11 (23%)
4	TCL	G	1320	-	18,18,18	1.12	0	25,25,25	0.98	0
2	GLC	G	1321	-	12,12,12	0.96	0	17,17,17	2.76	8 (47%)
3	NAD	H	1322	-	38,48,48	1.82	8 (21%)	47,73,73	2.85	14 (29%)
4	TCL	H	1323	-	18,18,18	1.00	0	25,25,25	0.99	1 (4%)
2	GLC	H	1324	-	12,12,12	0.92	0	17,17,17	2.87	7 (41%)

In the following table, the Chirals column lists the number of chiral outliers, the number of chiral centers analysed, the number of these observed in the model and the number defined in the chemical component dictionary. Similar counts are reported in the Torsion and Rings columns. '-' means no outliers of that kind were identified.

Mol	Type	Chain	Res	Link	Chirals	Torsions	Rings
3	NAD	A	1301	-	-	0/22/62/62	0/5/5/5
4	TCL	A	1302	-	-	0/4/4/4	0/2/2/2
2	GLC	A	1303	-	1/1/5/5	0/2/22/22	0/1/1/1
3	NAD	B	1304	-	-	0/22/62/62	0/5/5/5
4	TCL	B	1305	-	-	0/4/4/4	0/2/2/2
2	GLC	B	1306	-	1/1/5/5	0/2/22/22	0/1/1/1
3	NAD	C	1307	-	-	0/22/62/62	0/5/5/5
4	TCL	C	1308	-	-	0/4/4/4	0/2/2/2
2	GLC	C	1309	-	1/1/5/5	0/2/22/22	0/1/1/1
3	NAD	D	1310	-	-	0/22/62/62	0/5/5/5
4	TCL	D	1311	-	-	0/4/4/4	0/2/2/2
2	GLC	D	1312	-	1/1/5/5	0/2/22/22	0/1/1/1
3	NAD	E	1313	-	-	0/22/62/62	0/5/5/5
4	TCL	E	1314	-	-	0/4/4/4	0/2/2/2
2	GLC	E	1315	-	1/1/5/5	0/2/22/22	0/1/1/1
3	NAD	F	1316	-	-	0/22/62/62	0/5/5/5
4	TCL	F	1317	-	-	0/4/4/4	0/2/2/2
2	GLC	F	1318	-	1/1/5/5	0/2/22/22	0/1/1/1
3	NAD	G	1319	-	-	0/22/62/62	0/5/5/5
4	TCL	G	1320	-	-	0/4/4/4	0/2/2/2
2	GLC	G	1321	-	1/1/5/5	0/2/22/22	0/1/1/1
3	NAD	H	1322	-	-	0/22/62/62	0/5/5/5
4	TCL	H	1323	-	-	0/4/4/4	0/2/2/2
2	GLC	H	1324	-	1/1/5/5	0/2/22/22	0/1/1/1

The worst 5 of 83 bond length outliers are listed below:

Mol	Chain	Res	Type	Atoms	Z	Observed(Å)	Ideal(Å)
3	B	1304	NAD	O2B-C2B	-3.41	1.34	1.43
3	E	1313	NAD	O3D-C3D	-3.40	1.34	1.43
3	F	1316	NAD	O2B-C2B	-3.20	1.35	1.43
3	H	1322	NAD	O2B-C2B	-3.05	1.35	1.43
3	C	1307	NAD	O2B-C2B	-2.98	1.35	1.43

The worst 5 of 154 bond angle outliers are listed below:

Mol	Chain	Res	Type	Atoms	Z	Observed(°)	Ideal(°)
3	E	1313	NAD	N3A-C2A-N1A	-9.68	121.48	128.89
3	A	1301	NAD	N3A-C2A-N1A	-9.27	121.80	128.89
3	F	1316	NAD	N3A-C2A-N1A	-8.41	122.45	128.89
3	D	1310	NAD	N3A-C2A-N1A	-8.39	122.47	128.89
3	B	1304	NAD	N3A-C2A-N1A	-8.32	122.53	128.89

5 of 8 chirality outliers are listed below:

Mol	Chain	Res	Type	Atom
2	B	1306	GLC	C1
2	G	1321	GLC	C2
2	F	1318	GLC	C1
2	A	1303	GLC	C2
2	E	1315	GLC	C1

There are no torsion outliers.

There are no ring outliers.

3 monomers are involved in 3 short contacts:

Mol	Chain	Res	Type	Clashes	Symm-Clashes
2	D	1312	GLC	1	0
3	E	1313	NAD	2	0
4	E	1314	TCL	1	0

5.7 Other polymers

There are no such residues in this entry.

5.8 Polymer linkage issues

There are no chain breaks in this entry.

6 Fit of model and data [i](#)

6.1 Protein, DNA and RNA chains [i](#)

EDS was not executed - this section will therefore be empty.

6.2 Non-standard residues in protein, DNA, RNA chains [i](#)

EDS was not executed - this section will therefore be empty.

6.3 Carbohydrates [i](#)

EDS was not executed - this section will therefore be empty.

6.4 Ligands [i](#)

EDS was not executed - this section will therefore be empty.

6.5 Other polymers [i](#)

EDS was not executed - this section will therefore be empty.