



Full wwPDB X-ray Structure Validation Report ⓘ

Feb 1, 2016 – 05:27 AM GMT

PDB ID : 2QS4
Title : Crystal structure of the GluR5 ligand binding core dimer in complex with LY466195 at 1.58 Angstroms resolution
Authors : Alushin, G.M.; Jane, D.E.; Mayer, M.L.
Deposited on : 2007-07-30
Resolution : 1.58 Å(reported)

This is a Full wwPDB X-ray Structure Validation Report for a publicly released PDB entry.
We welcome your comments at validation@mail.wwpdb.org
A user guide is available at
<http://wwpdb.org/validation/2016/XrayValidationReportHelp>
with specific help available everywhere you see the ⓘ symbol.

The following versions of software and data (see [references ⓘ](#)) were used in the production of this report:

MolProbity : 4.02b-467
Mogul : 1.7 (RC4), CSD as536be (2015)
Xtriage (Phenix) : 1.9-1692
EDS : rb-20026688
Percentile statistics : 20151230.v01 (using entries in the PDB archive December 30th 2015)
Refmac : 5.8.0135
CCP4 : 6.5.0
Ideal geometry (proteins) : Engh & Huber (2001)
Ideal geometry (DNA, RNA) : Parkinson et al. (1996)
Validation Pipeline (wwPDB-VP) : trunk26865

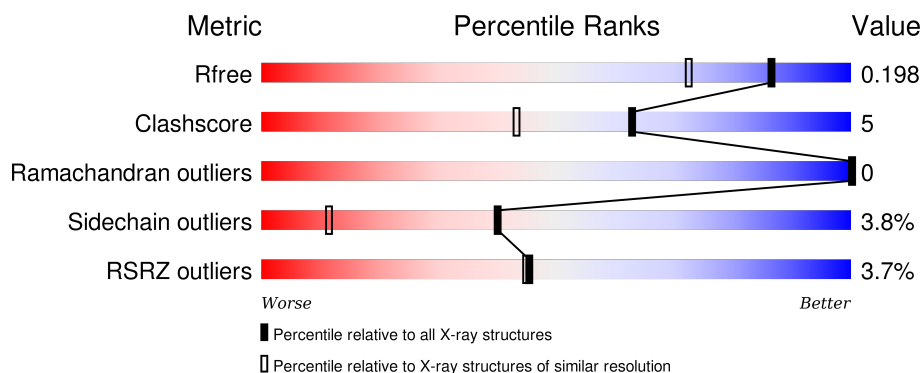
1 Overall quality at a glance ⓘ

The following experimental techniques were used to determine the structure:

X-RAY DIFFRACTION

The reported resolution of this entry is 1.58 Å.

Percentile scores (ranging between 0-100) for global validation metrics of the entry are shown in the following graphic. The table shows the number of entries on which the scores are based.



Metric	Whole archive (#Entries)	Similar resolution (#Entries, resolution range(Å))
R_{free}	91344	3815 (1.60-1.56)
Clashscore	102246	4131 (1.60-1.56)
Ramachandran outliers	100387	4021 (1.60-1.56)
Sidechain outliers	100360	4018 (1.60-1.56)
RSRZ outliers	91569	3823 (1.60-1.56)

The table below summarises the geometric issues observed across the polymeric chains and their fit to the electron density. The red, orange, yellow and green segments on the lower bar indicate the fraction of residues that contain outliers for ≥ 3 , 2, 1 and 0 types of geometric quality criteria. A grey segment represents the fraction of residues that are not modelled. The numeric value for each fraction is indicated below the corresponding segment, with a dot representing fractions $\leq 5\%$. The upper red bar (where present) indicates the fraction of residues that have poor fit to the electron density. The numeric value is given above the bar.

Mol	Chain	Length	Quality of chain
1	A	258	<div> <div>3%</div> <div>86%</div> <div>12%</div> <div>..</div> </div>
1	B	258	<div> <div>3%</div> <div>90%</div> <div>7%</div> <div>.</div> </div>
1	C	258	<div> <div>3%</div> <div>83%</div> <div>13%</div> <div>..</div> </div>
1	D	258	<div> <div>5%</div> <div>83%</div> <div>14%</div> <div>..</div> </div>

The following table lists non-polymeric compounds, carbohydrate monomers and non-standard

residues in protein, DNA, RNA chains that are outliers for geometric or electron-density-fit criteria:

Mol	Type	Chain	Res	Chirality	Geometry	Clashes	Electron density
2	NH4	A	259	-	-	-	X
3	LY5	B	259[A]	-	-	-	X
3	LY5	B	259[B]	-	-	-	X
4	GOL	B	260	-	-	-	X

2 Entry composition

There are 5 unique types of molecules in this entry. The entry contains 9924 atoms, of which 0 are hydrogens and 0 are deuteriums.

In the tables below, the ZeroOcc column contains the number of atoms modelled with zero occupancy, the AltConf column contains the number of residues with at least one atom in alternate conformation and the Trace column contains the number of residues modelled with at most 2 atoms.

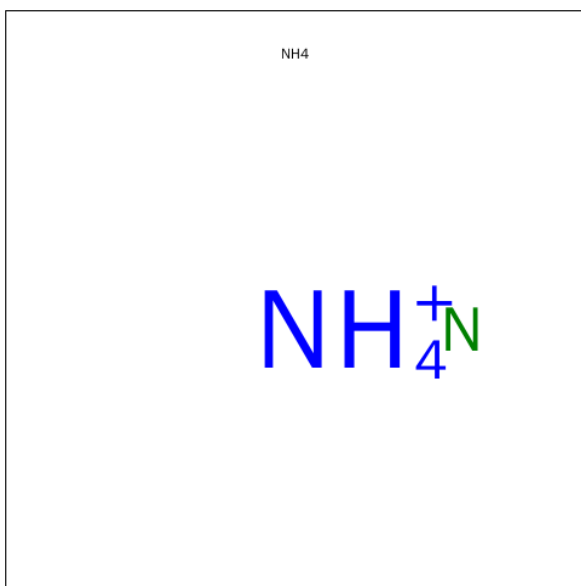
- Molecule 1 is a protein called Glutamate receptor, ionotropic kainate 1.

Mol	Chain	Residues	Atoms					ZeroOcc	AltConf	Trace
1	A	256	Total	C	N	O	S	0	21	0
			2203	1391	366	430	16			
1	B	251	Total	C	N	O	S	0	19	0
			2162	1370	364	414	14			
1	C	251	Total	C	N	O	S	0	16	0
			2134	1350	356	415	13			
1	D	253	Total	C	N	O	S	0	16	0
			2145	1359	359	413	14			

There are 20 discrepancies between the modelled and reference sequences:

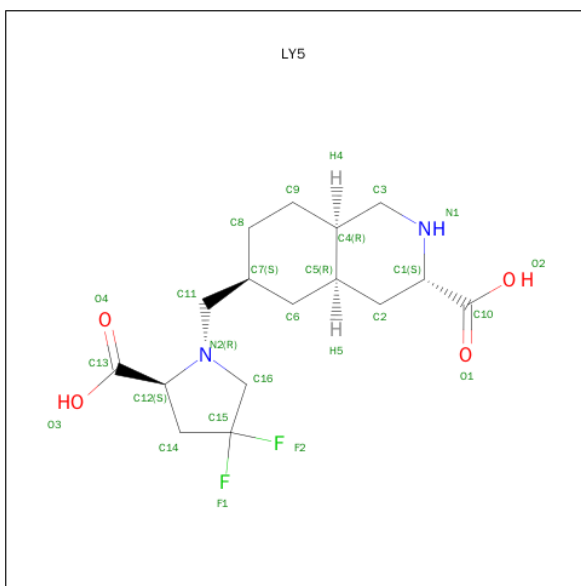
Chain	Residue	Modelled	Actual	Comment	Reference
A	1	GLY	-	EXPRESSION TAG	UNP P22756
A	2	SER	-	EXPRESSION TAG	UNP P22756
A	117	GLY	-	LINKER	UNP P22756
A	118	THR	-	LINKER	UNP P22756
A	258	SER	GLU	ENGINEERED	UNP P22756
B	1	GLY	-	EXPRESSION TAG	UNP P22756
B	2	SER	-	EXPRESSION TAG	UNP P22756
B	117	GLY	-	LINKER	UNP P22756
B	118	THR	-	LINKER	UNP P22756
B	258	SER	GLU	ENGINEERED	UNP P22756
C	1	GLY	-	EXPRESSION TAG	UNP P22756
C	2	SER	-	EXPRESSION TAG	UNP P22756
C	117	GLY	-	LINKER	UNP P22756
C	118	THR	-	LINKER	UNP P22756
C	258	SER	GLU	ENGINEERED	UNP P22756
D	1	GLY	-	EXPRESSION TAG	UNP P22756
D	2	SER	-	EXPRESSION TAG	UNP P22756
D	117	GLY	-	LINKER	UNP P22756
D	118	THR	-	LINKER	UNP P22756
D	258	SER	GLU	ENGINEERED	UNP P22756

- Molecule 2 is AMMONIUM ION (three-letter code: NH4) (formula: H₄N).



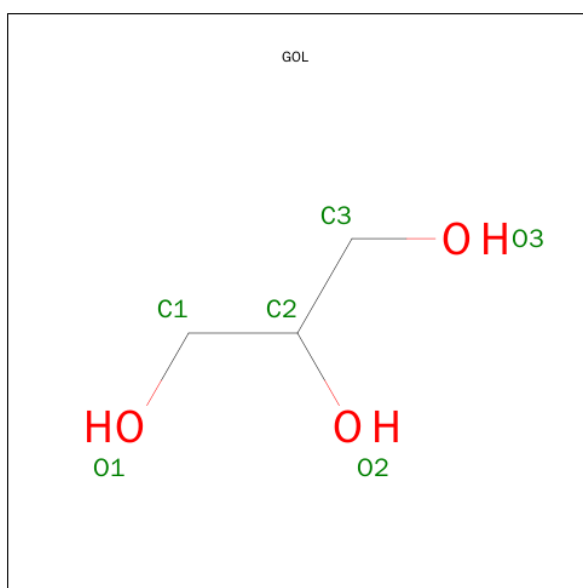
Mol	Chain	Residues	Atoms	ZeroOcc	AltConf
2	A	1	Total N 1 1	0	0
2	D	1	Total N 1 1	0	0

- Molecule 3 is (3S,4AR,6S,8AR)-6-{[(2S)-2-CARBOXY-4,4-DIFLUOROPYRROLIDIN-1-YL]METHYL}DECAHYDROISOQUINOLINE-3-CARBOXYLIC ACID (three-letter code: LY5) (formula: C₁₆H₂₄F₂N₂O₄).



Mol	Chain	Residues	Atoms					ZeroOcc	AltConf
3	A	1	Total	C	F	N	O	0	1
			35	22	4	3	6		
3	B	1	Total	C	F	N	O	0	1
			35	22	4	3	6		
3	C	1	Total	C	F	N	O	0	0
			24	16	2	2	4		
3	D	1	Total	C	F	N	O	0	0
			24	16	2	2	4		

- Molecule 4 is GLYCEROL (three-letter code: GOL) (formula: C₃H₈O₃).



Mol	Chain	Residues	Atoms			ZeroOcc	AltConf
4	B	1	Total	C	O	0	0
			6	3	3		
4	C	1	Total	C	O	0	0
			6	3	3		

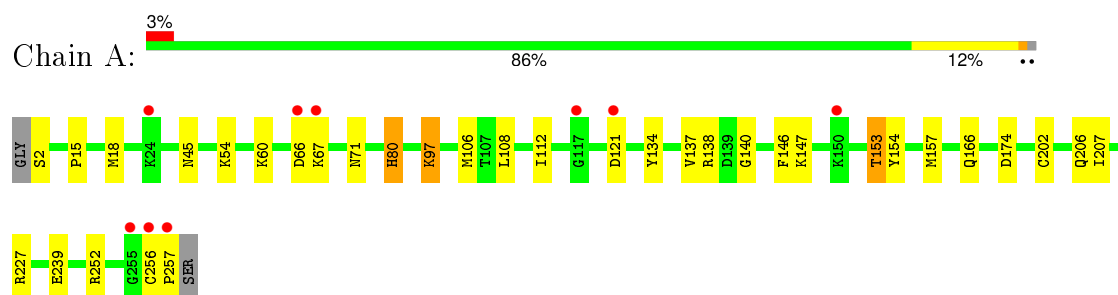
- Molecule 5 is water.

Mol	Chain	Residues	Atoms		ZeroOcc	AltConf
5	A	305	Total	O	0	0
			305	305		
5	B	266	Total	O	0	1
			266	266		
5	C	293	Total	O	0	0
			293	293		
5	D	284	Total	O	0	1
			284	284		

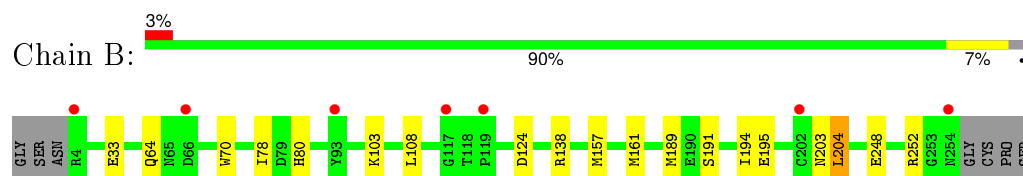
3 Residue-property plots [i](#)

These plots are drawn for all protein, RNA and DNA chains in the entry. The first graphic for a chain summarises the proportions of errors displayed in the second graphic. The second graphic shows the sequence view annotated by issues in geometry and electron density. Residues are color-coded according to the number of geometric quality criteria for which they contain at least one outlier: green = 0, yellow = 1, orange = 2 and red = 3 or more. A red dot above a residue indicates a poor fit to the electron density ($RSRZ > 2$). Stretches of 2 or more consecutive residues without any outlier are shown as a green connector. Residues present in the sample, but not in the model, are shown in grey.

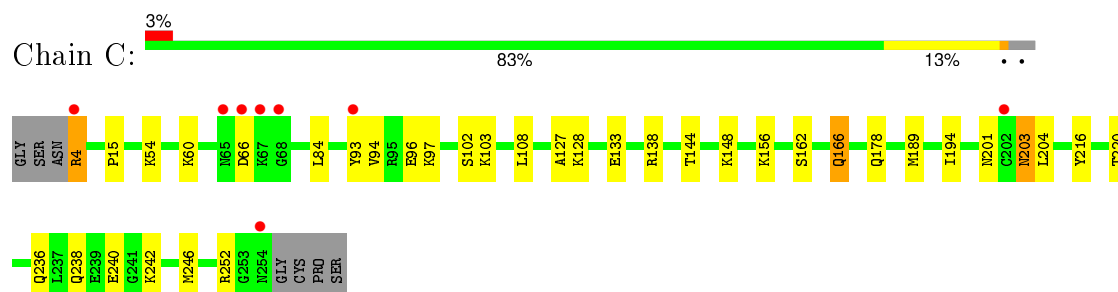
- Molecule 1: Glutamate receptor, ionotropic kainate 1



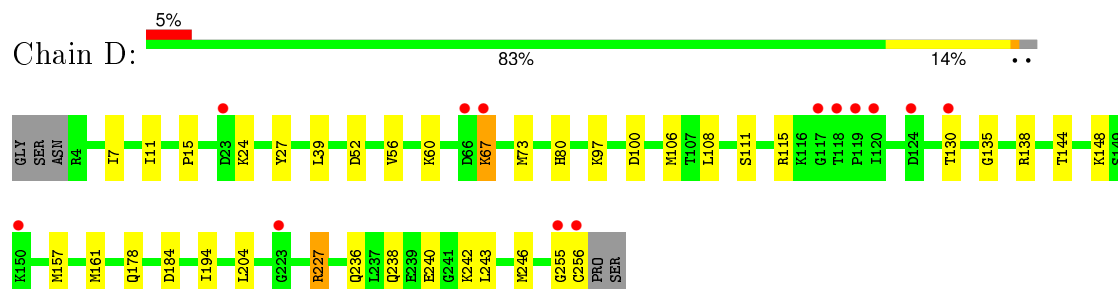
- Molecule 1: Glutamate receptor, ionotropic kainate 1



- Molecule 1: Glutamate receptor, ionotropic kainate 1



- Molecule 1: Glutamate receptor, ionotropic kainate 1



4 Data and refinement statistics

Property	Value	Source
Space group	H 3	Depositor
Cell constants a, b, c, α , β , γ	89.24Å 89.24Å 330.37Å 90.00° 90.00° 120.00°	Depositor
Resolution (Å)	37.64 – 1.58 37.63 – 1.58	Depositor EDS
% Data completeness (in resolution range)	100.0 (37.64-1.58) 100.0 (37.63-1.58)	Depositor EDS
R_{merge}	0.06	Depositor
R_{sym}	(Not available)	Depositor
$\langle I/\sigma(I) \rangle$ ¹	3.01 (at 1.58Å)	Xtriage
Refinement program	REFMAC 5.2.0005	Depositor
R, R_{free}	0.158 , 0.199 0.159 , 0.198	Depositor DCC
R_{free} test set	6690 reflections (5.24%)	DCC
Wilson B-factor (Å ²)	15.2	Xtriage
Anisotropy	0.016	Xtriage
Bulk solvent k_{sol} (e/Å ³), B_{sol} (Å ²)	0.38 , 52.4	EDS
Estimated twinning fraction	0.036 for -h-k,k,-l	Xtriage
L-test for twinning ²	$\langle L \rangle = 0.49$, $\langle L^2 \rangle = 0.32$	Xtriage
Outliers	0 of 134251 reflections	Xtriage
F_o, F_c correlation	0.97	EDS
Total number of atoms	9924	wwPDB-VP
Average B, all atoms (Å ²)	14.0	wwPDB-VP

Xtriage's analysis on translational NCS is as follows: *The analyses of the Patterson function reveals a significant off-origin peak that is 20.38 % of the origin peak, indicating pseudo translational symmetry. The chance of finding a peak of this or larger height randomly in a structure without pseudo translational symmetry is equal to 8.8019e-03. The detected translational NCS is most likely also responsible for the elevated intensity ratio.*

¹ Intensities estimated from amplitudes.

² Theoretical values of $\langle |L| \rangle$, $\langle L^2 \rangle$ for acentric reflections are 0.5, 0.375 respectively for untwinned datasets, and 0.333, 0.2 for perfectly twinned datasets.

5 Model quality [i](#)

5.1 Standard geometry [i](#)

Bond lengths and bond angles in the following residue types are not validated in this section: GOL, LY5, NH4

The Z score for a bond length (or angle) is the number of standard deviations the observed value is removed from the expected value. A bond length (or angle) with $|Z| > 5$ is considered an outlier worth inspection. RMSZ is the root-mean-square of all Z scores of the bond lengths (or angles).

Mol	Chain	Bond lengths		Bond angles	
		RMSZ	$\# Z > 5$	RMSZ	$\# Z > 5$
1	A	0.79	0/2242	0.83	1/3021 (0.0%)
1	B	0.66	0/2200	0.72	1/2961 (0.0%)
1	C	0.66	0/2172	0.77	1/2926 (0.0%)
1	D	0.75	0/2183	0.82	0/2941
All	All	0.72	0/8797	0.79	3/11849 (0.0%)

There are no bond length outliers.

All (3) bond angle outliers are listed below:

Mol	Chain	Res	Type	Atoms	Z	Observed(°)	Ideal(°)
1	A	106	MET	CG-SD-CE	-6.42	89.94	100.20
1	B	204	LEU	CB-CG-CD1	5.36	120.11	111.00
1	C	216	TYR	CB-CG-CD1	-5.17	117.90	121.00

There are no chirality outliers.

There are no planarity outliers.

5.2 Too-close contacts [i](#)

In the following table, the Non-H and H(model) columns list the number of non-hydrogen atoms and hydrogen atoms in the chain respectively. The H(added) column lists the number of hydrogen atoms added and optimized by MolProbity. The Clashes column lists the number of clashes within the asymmetric unit, whereas Symm-Clashes lists symmetry related clashes.

Mol	Chain	Non-H	H(model)	H(added)	Clashes	Symm-Clashes
1	A	2203	0	2179	27	0
1	B	2162	0	2164	14	0
1	C	2134	0	2119	24	1
1	D	2145	0	2137	28	0

Continued on next page...

Continued from previous page...

Mol	Chain	Non-H	H(model)	H(added)	Clashes	Symm-Clashes
2	A	1	0	0	0	0
2	D	1	0	0	0	0
3	A	35	0	16	1	0
3	B	35	0	16	0	0
3	C	24	0	22	0	0
3	D	24	0	22	0	0
4	B	6	0	8	0	0
4	C	6	0	8	0	0
5	A	305	0	0	16	0
5	B	266	0	0	5	0
5	C	293	0	0	12	1
5	D	284	0	0	4	0
All	All	9924	0	8691	93	1

The all-atom clashscore is defined as the number of clashes found per 1000 atoms (including hydrogen atoms). The all-atom clashscore for this structure is 5.

All (93) close contacts within the same asymmetric unit are listed below, sorted by their clash magnitude.

Atom-1	Atom-2	Interatomic distance (Å)	Clash overlap (Å)
1:A:140:GLY:HA3	5:A:517:HOH:O	1.39	1.18
1:C:54:LYS:HE2	5:C:411:HOH:O	1.78	0.82
1:A:252:ARG:HD3	5:A:294:HOH:O	1.81	0.79
1:A:174:ASP:OD2	5:A:448:HOH:O	2.00	0.79
1:C:238:GLN:CD	5:C:369:HOH:O	2.20	0.79
1:C:4:ARG:HD2	1:C:4:ARG:N	1.99	0.76
1:A:206:GLN:OE1	5:A:540:HOH:O	2.04	0.73
1:D:11[B]:ILE:HG12	1:D:56:VAL:HG12	1.69	0.73
3:A:260[B]:LY5:H141	5:A:517:HOH:O	1.89	0.72
1:D:238:GLN:HG2	1:D:243:LEU:HD12	1.71	0.72
1:A:202[B]:CYS:HB3	1:A:256:CYS:SG	2.30	0.70
1:D:11[B]:ILE:HG12	1:D:56:VAL:CG1	2.21	0.70
1:B:189:MET:HG3	1:B:194:ILE:HG13	1.76	0.68
1:B:203[B]:ASN:HD22	1:B:203[B]:ASN:H	1.44	0.66
1:D:97:LYS:HE2	5:D:479:HOH:O	1.97	0.65
1:B:191:SER:O	1:B:195[B]:GLU:HG3	1.96	0.64
1:A:154:TYR:HD2	1:A:157[B]:MET:CE	2.10	0.64
1:A:153:THR:O	1:A:157[A]:MET:HG3	1.98	0.64
1:D:135:GLY:HA2	1:D:161[A]:MET:HG2	1.80	0.64
1:D:157:MET:O	1:D:161[B]:MET:HG3	1.98	0.64
1:D:60:LYS:HE3	5:D:403:HOH:O	1.98	0.62

Continued on next page...

Continued from previous page...

Atom-1	Atom-2	Interatomic distance (Å)	Clash overlap (Å)
1:A:45:ASN:HB3	5:A:523:HOH:O	2.00	0.62
1:B:33:GLU:OE1	5:B:480:HOH:O	2.16	0.61
1:C:102:SER:HA	5:C:310:HOH:O	2.01	0.59
1:C:189:MET:HG3	1:C:194:ILE:HG13	1.83	0.59
1:B:138[B]:ARG:NH1	5:B:394:HOH:O	2.35	0.59
1:C:178[B]:GLN:NE2	5:C:419:HOH:O	2.36	0.58
5:A:526:HOH:O	1:D:178:GLN:HG2	2.02	0.58
1:B:157:MET:O	1:B:161[B]:MET:HG3	2.03	0.58
1:A:15:PRO:HA	1:A:18[A]:MET:SD	2.43	0.57
1:A:80:HIS:HE1	5:A:365:HOH:O	1.87	0.57
1:A:202[B]:CYS:CB	1:A:256:CYS:SG	2.92	0.57
1:D:39:LEU:HB2	1:D:246:MET:HE1	1.86	0.57
1:D:80:HIS:HE1	5:D:432:HOH:O	1.87	0.57
1:A:239[B]:GLU:HG2	1:C:93:TYR:CD1	2.40	0.56
1:B:138[B]:ARG:NH1	5:B:330:HOH:O	2.29	0.56
1:A:138[A]:ARG:HD2	5:A:385:HOH:O	2.05	0.56
1:D:100:ASP:HB3	1:D:227:ARG:HG3	1.87	0.56
1:A:154:TYR:HA	1:A:157[B]:MET:CE	2.36	0.56
1:A:146:PHE:HE2	1:A:157[B]:MET:HE1	1.70	0.56
5:A:459:HOH:O	1:D:138[B]:ARG:CZ	2.53	0.56
1:C:4:ARG:HA	5:C:323:HOH:O	2.07	0.55
1:A:154:TYR:HD2	1:A:157[B]:MET:HE2	1.72	0.55
1:C:178[B]:GLN:CD	5:C:419:HOH:O	2.46	0.54
1:D:106:MET:HG2	5:D:382:HOH:O	2.07	0.54
1:C:94:VAL:HG23	5:C:357:HOH:O	2.08	0.53
1:C:138:ARG:NH1	1:C:166[B]:GLN:OE1	2.44	0.51
1:C:236:GLN:O	1:C:240:GLU:HG2	2.11	0.51
1:C:93:TYR:HA	1:C:96:GLU:OE2	2.11	0.51
1:A:60:LYS:HD3	1:A:71:ASN:ND2	2.26	0.50
1:C:84:LEU:HD23	1:C:220:THR:HG22	1.93	0.49
1:D:240:GLU:HG3	1:D:242:LYS:HG3	1.94	0.49
1:C:242:LYS:O	1:C:246[B]:MET:HG3	2.13	0.49
1:C:60:LYS:HE2	5:C:497:HOH:O	2.13	0.49
1:C:133[B]:GLU:HG3	5:C:481:HOH:O	2.12	0.49
1:B:64:GLN:HG3	1:B:70:TRP:CZ2	2.48	0.49
1:A:137:VAL:HB	5:A:517:HOH:O	2.12	0.48
1:D:11[B]:ILE:HG13	1:D:73:MET:SD	2.53	0.48
1:A:97:LYS:HE2	5:A:446:HOH:O	2.12	0.48
1:A:112:ILE:HB	1:A:207:ILE:HB	1.95	0.48
1:A:54:LYS:NZ	5:A:502:HOH:O	2.46	0.48
1:B:78:ILE:HG12	5:B:290:HOH:O	2.14	0.47

Continued on next page...

Continued from previous page...

Atom-1	Atom-2	Interatomic distance (Å)	Clash overlap (Å)
1:C:96:GLU:OE2	5:C:353:HOH:O	2.19	0.47
1:A:154:TYR:HD2	1:A:157[B]:MET:HE1	1.79	0.47
1:C:162:SER:HA	1:C:166[B]:GLN:HG2	1.98	0.46
1:C:203:ASN:HB3	5:C:438:HOH:O	2.16	0.46
1:D:144:THR:HG22	1:D:148:LYS:HD2	1.97	0.45
1:D:236:GLN:O	1:D:240:GLU:HG2	2.16	0.45
1:A:146:PHE:HE2	1:A:157[B]:MET:CE	2.28	0.45
1:A:257:PRO:HD2	5:A:547:HOH:O	2.16	0.45
1:D:238:GLN:CG	1:D:243:LEU:HD12	2.44	0.45
1:B:64:GLN:HG3	1:B:70:TRP:CE2	2.53	0.44
1:D:135:GLY:HA2	1:D:161[A]:MET:CG	2.46	0.44
1:B:157:MET:O	1:B:161[A]:MET:HG3	2.18	0.44
5:A:459:HOH:O	1:D:138[B]:ARG:NH2	2.51	0.44
1:D:111[B]:SER:OG	1:D:194:ILE:HD12	2.16	0.44
5:A:527:HOH:O	1:D:27:TYR:HE1	1.99	0.44
1:D:11[B]:ILE:HD11	1:D:60:LYS:O	2.17	0.44
1:A:134:TYR:CE1	1:A:157[B]:MET:HG2	2.53	0.43
1:A:97:LYS:HD2	1:A:97:LYS:HA	1.87	0.43
1:C:144:THR:HG22	1:C:148:LYS:HD2	2.01	0.43
1:A:138[A]:ARG:NH1	1:A:166:GLN:OE1	2.52	0.43
1:D:115:ARG:HH21	1:D:184:ASP:CG	2.20	0.43
1:D:11[B]:ILE:HG12	1:D:56:VAL:HG11	1.99	0.43
1:C:138:ARG:HD2	5:C:504:HOH:O	2.20	0.42
1:D:7:ILE:HD13	1:D:52[A]:ASP:HB3	2.01	0.42
1:C:127:ALA:O	1:C:156:LYS:HE2	2.20	0.42
1:D:255:GLY:O	1:D:256:CYS:HB2	2.19	0.42
1:B:103[B]:LYS:HE3	1:B:103[B]:LYS:HB2	1.90	0.42
1:B:103[B]:LYS:NZ	5:B:284:HOH:O	2.53	0.41
1:D:67:LYS:HE3	1:D:67:LYS:HB2	1.98	0.41
1:B:189:MET:CG	1:B:194:ILE:HG13	2.47	0.40
1:C:240:GLU:HG3	1:C:242:LYS:HG3	2.03	0.40

All (1) symmetry-related close contacts are listed below. The label for Atom-2 includes the symmetry operator and encoded unit-cell translations to be applied.

Atom-1	Atom-2	Interatomic distance (Å)	Clash overlap (Å)
1:C:252:ARG:NH2	5:C:472:HOH:O[2_565]	2.14	0.06

5.3 Torsion angles

5.3.1 Protein backbone

In the following table, the Percentiles column shows the percent Ramachandran outliers of the chain as a percentile score with respect to all X-ray entries followed by that with respect to entries of similar resolution.

The Analysed column shows the number of residues for which the backbone conformation was analysed, and the total number of residues.

Mol	Chain	Analysed	Favoured	Allowed	Outliers	Percentiles	
1	A	276/258 (107%)	272 (99%)	4 (1%)	0	100	100
1	B	268/258 (104%)	263 (98%)	5 (2%)	0	100	100
1	C	265/258 (103%)	260 (98%)	5 (2%)	0	100	100
1	D	267/258 (104%)	262 (98%)	5 (2%)	0	100	100
All	All	1076/1032 (104%)	1057 (98%)	19 (2%)	0	100	100

There are no Ramachandran outliers to report.

5.3.2 Protein sidechains

In the following table, the Percentiles column shows the percent sidechain outliers of the chain as a percentile score with respect to all X-ray entries followed by that with respect to entries of similar resolution.

The Analysed column shows the number of residues for which the sidechain conformation was analysed, and the total number of residues.

Mol	Chain	Analysed	Rotameric	Outliers	Percentiles	
1	A	246/225 (109%)	236 (96%)	10 (4%)	37	10
1	B	239/225 (106%)	233 (98%)	6 (2%)	55	24
1	C	236/225 (105%)	223 (94%)	13 (6%)	27	5
1	D	237/225 (105%)	230 (97%)	7 (3%)	48	18
All	All	958/900 (106%)	922 (96%)	36 (4%)	40	11

All (36) residues with a non-rotameric sidechain are listed below:

Mol	Chain	Res	Type
1	A	2	SER
1	A	66	ASP

Continued on next page...

Continued from previous page...

Mol	Chain	Res	Type
1	A	67	LYS
1	A	80	HIS
1	A	97	LYS
1	A	108	LEU
1	A	121	ASP
1	A	147	LYS
1	A	153	THR
1	A	227	ARG
1	B	80	HIS
1	B	108	LEU
1	B	124	ASP
1	B	204	LEU
1	B	248	GLU
1	B	252	ARG
1	C	4	ARG
1	C	15	PRO
1	C	66	ASP
1	C	97	LYS
1	C	103	LYS
1	C	108	LEU
1	C	128	LYS
1	C	166[A]	GLN
1	C	166[B]	GLN
1	C	201[A]	ASN
1	C	201[B]	ASN
1	C	203	ASN
1	C	204	LEU
1	D	15	PRO
1	D	24	LYS
1	D	67	LYS
1	D	108	LEU
1	D	130	THR
1	D	204	LEU
1	D	227	ARG

Some sidechains can be flipped to improve hydrogen bonding and reduce clashes. All (7) such sidechains are listed below:

Mol	Chain	Res	Type
1	A	80	HIS
1	A	206	GLN
1	A	254	ASN
1	C	203	ASN

Continued on next page...

Continued from previous page...

Mol	Chain	Res	Type
1	C	254	ASN
1	D	64	GLN
1	D	80	HIS

5.3.3 RNA ⓘ

There are no RNA molecules in this entry.

5.4 Non-standard residues in protein, DNA, RNA chains ⓘ

There are no non-standard protein/DNA/RNA residues in this entry.

5.5 Carbohydrates ⓘ

There are no carbohydrates in this entry.

5.6 Ligand geometry ⓘ

Of 10 ligands modelled in this entry, 2 are modelled with single atom - leaving 8 for Mogul analysis.

In the following table, the Counts columns list the number of bonds (or angles) for which Mogul statistics could be retrieved, the number of bonds (or angles) that are observed in the model and the number of bonds (or angles) that are defined in the chemical component dictionary. The Link column lists molecule types, if any, to which the group is linked. The Z score for a bond length (or angle) is the number of standard deviations the observed value is removed from the expected value. A bond length (or angle) with $|Z| > 2$ is considered an outlier worth inspection. RMSZ is the root-mean-square of all Z scores of the bond lengths (or angles).

Mol	Type	Chain	Res	Link	Bond lengths			Bond angles		
					Counts	RMSZ	# Z > 2	Counts	RMSZ	# Z > 2
3	LY5	A	260[A]	-	15,26,26	2.02	3 (20%)	21,39,39	1.30	4 (19%)
3	LY5	A	260[B]	-	15,26,26	2.51	3 (20%)	21,39,39	1.12	2 (9%)
3	LY5	B	259[A]	-	15,26,26	1.64	2 (13%)	21,39,39	1.38	3 (14%)
3	LY5	B	259[B]	-	15,26,26	1.52	2 (13%)	21,39,39	1.24	2 (9%)
4	GOL	B	260	-	5,5,5	0.35	0	5,5,5	0.42	0
3	LY5	C	259	-	15,26,26	2.25	2 (13%)	21,39,39	1.37	4 (19%)
4	GOL	C	260	-	5,5,5	0.23	0	5,5,5	0.52	0
3	LY5	D	260	-	15,26,26	2.10	4 (26%)	21,39,39	0.87	1 (4%)

In the following table, the Chirals column lists the number of chiral outliers, the number of chiral centers analysed, the number of these observed in the model and the number defined in the chemical component dictionary. Similar counts are reported in the Torsion and Rings columns. '-' means no outliers of that kind were identified.

Mol	Type	Chain	Res	Link	Chirals	Torsions	Rings
3	LY5	A	260[A]	-	-	0/4/48/48	0/3/3/3
3	LY5	A	260[B]	-	-	0/4/48/48	0/3/3/3
3	LY5	B	259[A]	-	-	0/4/48/48	0/3/3/3
3	LY5	B	259[B]	-	-	0/4/48/48	0/3/3/3
4	GOL	B	260	-	-	0/4/4/4	0/0/0/0
3	LY5	C	259	-	-	0/4/48/48	0/3/3/3
4	GOL	C	260	-	-	0/4/4/4	0/0/0/0
3	LY5	D	260	-	-	0/4/48/48	0/3/3/3

All (16) bond length outliers are listed below:

Mol	Chain	Res	Type	Atoms	Z	Observed(Å)	Ideal(Å)
3	A	260[B]	LY5	F2-C15	-8.21	1.27	1.38
3	C	259	LY5	F2-C15	-6.49	1.30	1.38
3	A	260[A]	LY5	F1-C15	-6.41	1.30	1.38
3	D	260	LY5	F1-C15	-6.04	1.30	1.38
3	C	259	LY5	F1-C15	-4.98	1.31	1.38
3	B	259[A]	LY5	F1-C15	-4.75	1.32	1.38
3	B	259[B]	LY5	F2-C15	-4.43	1.32	1.38
3	A	260[B]	LY5	F1-C15	-3.96	1.33	1.38
3	D	260	LY5	F2-C15	-3.72	1.33	1.38
3	B	259[A]	LY5	F2-C15	-3.49	1.33	1.38
3	A	260[A]	LY5	F2-C15	-3.40	1.33	1.38
3	B	259[B]	LY5	F1-C15	-3.25	1.34	1.38
3	A	260[B]	LY5	C3-N1	2.11	1.50	1.47
3	A	260[A]	LY5	C3-N1	2.11	1.50	1.47
3	D	260	LY5	C2-C1	2.20	1.55	1.53
3	D	260	LY5	C3-N1	2.23	1.50	1.47

All (16) bond angle outliers are listed below:

Mol	Chain	Res	Type	Atoms	Z	Observed(°)	Ideal(°)
3	B	259[A]	LY5	C11-N2-C12	-3.11	104.50	112.88
3	B	259[B]	LY5	C8-C7-C11	-2.70	103.26	111.60
3	A	260[A]	LY5	C8-C7-C11	-2.67	103.37	111.60
3	B	259[A]	LY5	C9-C8-C7	-2.15	108.72	112.47
3	B	259[B]	LY5	C9-C8-C7	-2.15	108.72	112.47
3	A	260[A]	LY5	C11-N2-C12	-2.14	107.12	112.88

Continued on next page...

Continued from previous page...

Mol	Chain	Res	Type	Atoms	Z	Observed(°)	Ideal(°)
3	C	259	LY5	C9-C8-C7	-2.13	108.77	112.47
3	C	259	LY5	C11-N2-C12	-2.09	107.24	112.88
3	A	260[B]	LY5	C9-C8-C7	-2.08	108.85	112.47
3	A	260[A]	LY5	C9-C8-C7	-2.08	108.85	112.47
3	C	259	LY5	C9-C4-C3	-2.07	109.08	111.97
3	B	259[A]	LY5	C7-C11-N2	2.07	117.75	113.23
3	D	260	LY5	C6-C5-C4	2.11	113.98	110.62
3	A	260[B]	LY5	C3-C4-C5	2.67	112.83	107.94
3	A	260[A]	LY5	C3-C4-C5	2.67	112.83	107.94
3	C	259	LY5	C3-C4-C5	2.82	113.12	107.94

There are no chirality outliers.

There are no torsion outliers.

There are no ring outliers.

1 monomer is involved in 1 short contact:

Mol	Chain	Res	Type	Clashes	Symm-Clashes
3	A	260[B]	LY5	1	0

5.7 Other polymers [i](#)

There are no such residues in this entry.

5.8 Polymer linkage issues [i](#)

There are no chain breaks in this entry.

6 Fit of model and data ⓘ

6.1 Protein, DNA and RNA chains ⓘ

In the following table, the column labelled ‘#RSRZ> 2’ contains the number (and percentage) of RSRZ outliers, followed by percent RSRZ outliers for the chain as percentile scores relative to all X-ray entries and entries of similar resolution. The OWAB column contains the minimum, median, 95th percentile and maximum values of the occupancy-weighted average B-factor per residue. The column labelled ‘Q< 0.9’ lists the number of (and percentage) of residues with an average occupancy less than 0.9.

Mol	Chain	Analysed	<RSRZ>	#RSRZ>2			OWAB(Å ²)	Q<0.9
1	A	256/258 (99%)	-0.11	9 (3%)	48	47	2, 8, 18, 38	0
1	B	251/258 (97%)	-0.26	7 (2%)	56	56	5, 13, 21, 27	0
1	C	251/258 (97%)	-0.04	8 (3%)	51	51	7, 14, 23, 33	0
1	D	253/258 (98%)	-0.01	13 (5%)	32	30	3, 10, 21, 35	0
All	All	1011/1032 (97%)	-0.10	37 (3%)	45	45	2, 12, 21, 38	0

All (37) RSRZ outliers are listed below:

Mol	Chain	Res	Type	RSRZ
1	C	66	ASP	7.8
1	C	254	ASN	5.6
1	D	255	GLY	5.4
1	A	66	ASP	5.0
1	A	256	CYS	4.8
1	A	117	GLY	4.4
1	C	67	LYS	4.3
1	D	66	ASP	4.0
1	B	66	ASP	4.0
1	B	254	ASN	3.6
1	D	119	PRO	3.6
1	D	256	CYS	3.4
1	D	23	ASP	3.2
1	A	257	PRO	3.1
1	B	4	ARG	3.1
1	C	93	TYR	3.0
1	A	150	LYS	3.0
1	D	67	LYS	2.9
1	D	130	THR	2.9
1	D	118	THR	2.8
1	B	93	TYR	2.7

Continued on next page...

Continued from previous page...

Mol	Chain	Res	Type	RSRZ
1	B	202	CYS	2.6
1	B	119	PRO	2.6
1	D	150	LYS	2.6
1	D	117	GLY	2.6
1	D	120	ILE	2.6
1	C	4	ARG	2.5
1	C	65	ASN	2.4
1	D	223	GLY	2.4
1	A	67	LYS	2.3
1	D	124	ASP	2.2
1	C	68	GLY	2.1
1	C	202	CYS	2.1
1	A	255	GLY	2.1
1	B	117	GLY	2.1
1	A	24	LYS	2.0
1	A	121	ASP	2.0

6.2 Non-standard residues in protein, DNA, RNA chains [i](#)

There are no non-standard protein/DNA/RNA residues in this entry.

6.3 Carbohydrates [i](#)

There are no carbohydrates in this entry.

6.4 Ligands [i](#)

In the following table, the Atoms column lists the number of modelled atoms in the group and the number defined in the chemical component dictionary. LLDF column lists the quality of electron density of the group with respect to its neighbouring residues in protein, DNA or RNA chains. The B-factors column lists the minimum, median, 95th percentile and maximum values of B factors of atoms in the group. The column labelled 'Q< 0.9' lists the number of atoms with occupancy less than 0.9.

Mol	Type	Chain	Res	Atoms	RSCC	RSR	LLDF	B-factors(Å ²)	Q<0.9
2	NH4	A	259	1/1	0.98	0.13	3.43	17,17,17,17	0
4	GOL	B	260	6/6	0.91	0.12	2.37	23,24,25,27	0
3	LY5	B	259[A]	24/24	0.94	0.09	2.22	11,14,21,24	11
3	LY5	B	259[B]	24/24	0.94	0.09	2.22	11,14,21,23	11
2	NH4	D	259	1/1	0.95	0.11	1.78	25,25,25,25	0

Continued on next page...

Continued from previous page...

Mol	Type	Chain	Res	Atoms	RSCC	RSR	LLDF	B-factors(\AA^2)	Q<0.9
3	LY5	A	260[B]	24/24	0.96	0.10	0.88	7,9,14,18	11
3	LY5	A	260[A]	24/24	0.96	0.10	0.88	7,9,15,21	11
3	LY5	C	259	24/24	0.93	0.09	0.67	12,16,29,33	0
4	GOL	C	260	6/6	0.91	0.11	0.66	25,27,28,32	0
3	LY5	D	260	24/24	0.96	0.07	-0.52	6,9,17,22	0

6.5 Other polymers [i](#)

There are no such residues in this entry.