



wwPDB X-ray Structure Validation Summary Report ⓘ

Feb 1, 2016 – 08:04 PM GMT

PDB ID : 4QT0
Title : Crystal structure of human muscle L-lactate dehydrogenase in complex with inhibitor 1, 3-{[3-CARBAMOYL-7-(2,4-DIMETHOXYPYRIMIDIN-5-YL)QUINOLIN-4-YL]AMINO}BENZOIC ACID
Authors : Kolappan, S.; Craig, L.
Deposited on : 2014-07-06
Resolution : 3.20 Å(reported)

This is a wwPDB X-ray Structure Validation Summary Report for a publicly released PDB entry.
We welcome your comments at validation@mail.wwpdb.org
A user guide is available at
<http://wwpdb.org/validation/2016/XrayValidationReportHelp>
with specific help available everywhere you see the ⓘ symbol.

The following versions of software and data (see [references ⓘ](#)) were used in the production of this report:

MolProbity : 4.02b-467
Mogul : 1.7 (RC4), CSD as536be (2015)
Xtriage (Phenix) : 1.9-1692
EDS : rb-20026688
Percentile statistics : 20151230.v01 (using entries in the PDB archive December 30th 2015)
Refmac : 5.8.0135
CCP4 : 6.5.0
Ideal geometry (proteins) : Engh & Huber (2001)
Ideal geometry (DNA, RNA) : Parkinson et al. (1996)
Validation Pipeline (wwPDB-VP) : trunk26865

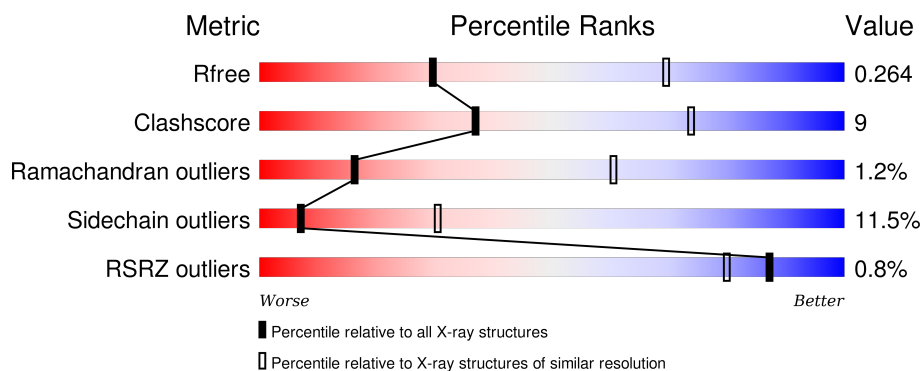
1 Overall quality at a glance

The following experimental techniques were used to determine the structure:

X-RAY DIFFRACTION

The reported resolution of this entry is 3.20 Å.

Percentile scores (ranging between 0-100) for global validation metrics of the entry are shown in the following graphic. The table shows the number of entries on which the scores are based.



Metric	Whole archive (#Entries)	Similar resolution (#Entries, resolution range(Å))
R_{free}	91344	1124 (3.24-3.16)
Clashscore	102246	1024 (3.22-3.18)
Ramachandran outliers	100387	1004 (3.22-3.18)
Sidechain outliers	100360	1003 (3.22-3.18)
RSRZ outliers	91569	1129 (3.24-3.16)

The table below summarises the geometric issues observed across the polymeric chains and their fit to the electron density. The red, orange, yellow and green segments on the lower bar indicate the fraction of residues that contain outliers for ≥ 3 , 2, 1 and 0 types of geometric quality criteria. A grey segment represents the fraction of residues that are not modelled. The numeric value for each fraction is indicated below the corresponding segment, with a dot representing fractions $\leq 5\%$. The upper red bar (where present) indicates the fraction of residues that have poor fit to the electron density. The numeric value is given above the bar.

Mol	Chain	Length	Quality of chain
1	A	337	<div> <div></div> <div>71%24% . .</div> </div>
1	B	337	<div> <div>%</div> <div>70%25% . .</div> </div>
1	C	337	<div> <div></div> <div>69%26% . .</div> </div>
1	D	337	<div> <div>%</div> <div>66%29% . .</div> </div>
1	E	337	<div> <div>%</div> <div>67%26% . .</div> </div>

Continued on next page...

Continued from previous page...

Mol	Chain	Length	Quality of chain
1	F	337	 68% 26% . . .
1	G	337	 72% 21% 5% .
1	H	337	 76% 19% . . .

The following table lists non-polymeric compounds, carbohydrate monomers and non-standard residues in protein, DNA, RNA chains that are outliers for geometric or electron-density-fit criteria:

Mol	Type	Chain	Res	Chirality	Geometry	Clashes	Electron density
2	38Q	A	501	-	-	-	X

2 Entry composition

There are 3 unique types of molecules in this entry. The entry contains 21267 atoms, of which 0 are hydrogens and 0 are deuteriums.

In the tables below, the ZeroOcc column contains the number of atoms modelled with zero occupancy, the AltConf column contains the number of residues with at least one atom in alternate conformation and the Trace column contains the number of residues modelled with at most 2 atoms.

- Molecule 1 is a protein called L-lactate dehydrogenase A chain.

Mol	Chain	Residues	Atoms					ZeroOcc	AltConf	Trace
1	A	332	Total	C	N	O	S	0	8	0
			2640	1685	449	493	13			
1	B	331	Total	C	N	O	S	0	3	0
			2592	1654	443	482	13			
1	C	332	Total	C	N	O	S	0	6	0
			2628	1676	449	490	13			
1	D	332	Total	C	N	O	S	0	8	0
			2646	1686	455	492	13			
1	E	331	Total	C	N	O	S	0	6	0
			2624	1674	449	488	13			
1	F	331	Total	C	N	O	S	0	11	0
			2666	1702	458	493	13			
1	G	331	Total	C	N	O	S	0	4	0
			2604	1659	446	486	13			
1	H	331	Total	C	N	O	S	0	1	0
			2579	1648	440	478	13			

There are 48 discrepancies between the modelled and reference sequences:

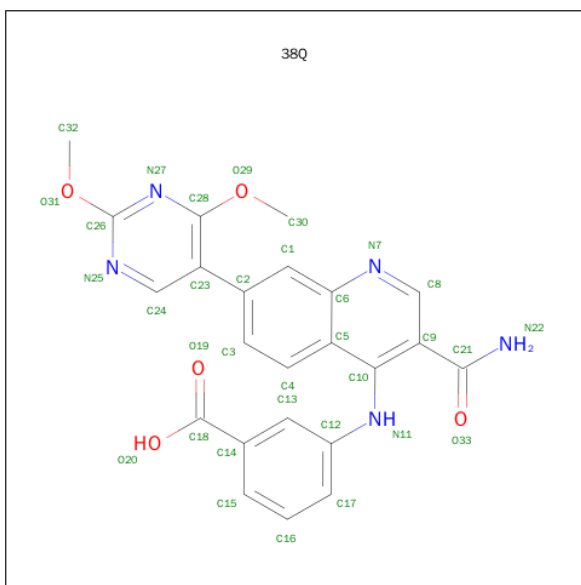
Chain	Residue	Modelled	Actual	Comment	Reference
A	333	HIS	-	EXPRESSION TAG	UNP P00338
A	334	HIS	-	EXPRESSION TAG	UNP P00338
A	335	HIS	-	EXPRESSION TAG	UNP P00338
A	336	HIS	-	EXPRESSION TAG	UNP P00338
A	337	HIS	-	EXPRESSION TAG	UNP P00338
A	338	HIS	-	EXPRESSION TAG	UNP P00338
B	333	HIS	-	EXPRESSION TAG	UNP P00338
B	334	HIS	-	EXPRESSION TAG	UNP P00338
B	335	HIS	-	EXPRESSION TAG	UNP P00338
B	336	HIS	-	EXPRESSION TAG	UNP P00338
B	337	HIS	-	EXPRESSION TAG	UNP P00338
B	338	HIS	-	EXPRESSION TAG	UNP P00338
C	333	HIS	-	EXPRESSION TAG	UNP P00338

Continued on next page...

Continued from previous page...

Chain	Residue	Modelled	Actual	Comment	Reference
C	334	HIS	-	EXPRESSION TAG	UNP P00338
C	335	HIS	-	EXPRESSION TAG	UNP P00338
C	336	HIS	-	EXPRESSION TAG	UNP P00338
C	337	HIS	-	EXPRESSION TAG	UNP P00338
C	338	HIS	-	EXPRESSION TAG	UNP P00338
D	333	HIS	-	EXPRESSION TAG	UNP P00338
D	334	HIS	-	EXPRESSION TAG	UNP P00338
D	335	HIS	-	EXPRESSION TAG	UNP P00338
D	336	HIS	-	EXPRESSION TAG	UNP P00338
D	337	HIS	-	EXPRESSION TAG	UNP P00338
D	338	HIS	-	EXPRESSION TAG	UNP P00338
E	333	HIS	-	EXPRESSION TAG	UNP P00338
E	334	HIS	-	EXPRESSION TAG	UNP P00338
E	335	HIS	-	EXPRESSION TAG	UNP P00338
E	336	HIS	-	EXPRESSION TAG	UNP P00338
E	337	HIS	-	EXPRESSION TAG	UNP P00338
E	338	HIS	-	EXPRESSION TAG	UNP P00338
F	333	HIS	-	EXPRESSION TAG	UNP P00338
F	334	HIS	-	EXPRESSION TAG	UNP P00338
F	335	HIS	-	EXPRESSION TAG	UNP P00338
F	336	HIS	-	EXPRESSION TAG	UNP P00338
F	337	HIS	-	EXPRESSION TAG	UNP P00338
F	338	HIS	-	EXPRESSION TAG	UNP P00338
G	333	HIS	-	EXPRESSION TAG	UNP P00338
G	334	HIS	-	EXPRESSION TAG	UNP P00338
G	335	HIS	-	EXPRESSION TAG	UNP P00338
G	336	HIS	-	EXPRESSION TAG	UNP P00338
G	337	HIS	-	EXPRESSION TAG	UNP P00338
G	338	HIS	-	EXPRESSION TAG	UNP P00338
H	333	HIS	-	EXPRESSION TAG	UNP P00338
H	334	HIS	-	EXPRESSION TAG	UNP P00338
H	335	HIS	-	EXPRESSION TAG	UNP P00338
H	336	HIS	-	EXPRESSION TAG	UNP P00338
H	337	HIS	-	EXPRESSION TAG	UNP P00338
H	338	HIS	-	EXPRESSION TAG	UNP P00338

- Molecule 2 is 3-{[3-CARBAMOYL-7-(2,4-DIMETHOXYPYRIMIDIN-5-YL)QUINOLIN-4-YL]AMINO}BENZOIC ACID (three-letter code: 38Q) (formula: C₂₃H₁₉N₅O₅).



Mol	Chain	Residues	Atoms				ZeroOcc	AltConf
2	A	1	Total	C	N	O	0	0
			33	23	5	5		
2	B	1	Total	C	N	O	0	0
			33	23	5	5		
2	C	1	Total	C	N	O	0	0
			33	23	5	5		
2	D	1	Total	C	N	O	0	0
			33	23	5	5		
2	E	1	Total	C	N	O	0	0
			33	23	5	5		
2	F	1	Total	C	N	O	0	0
			33	23	5	5		
2	G	1	Total	C	N	O	0	0
			33	23	5	5		
2	H	1	Total	C	N	O	0	0
			33	23	5	5		

- Molecule 3 is water.

Mol	Chain	Residues	Atoms		ZeroOcc	AltConf
3	A	2	Total	O	0	0
			2	2		
3	B	1	Total	O	0	0
			1	1		
3	C	5	Total	O	0	0
			5	5		
3	D	6	Total	O	0	0
			6	6		

Continued on next page...

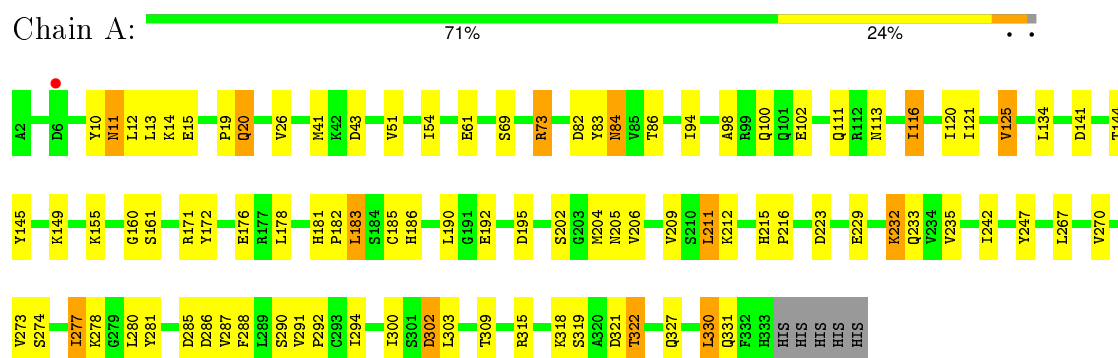
Continued from previous page...

Mol	Chain	Residues	Atoms		ZeroOcc	AltConf
3	E	1	Total 1	O 1	0	0
3	F	2	Total 2	O 2	0	0
3	G	6	Total 6	O 6	0	0
3	H	1	Total 1	O 1	0	0

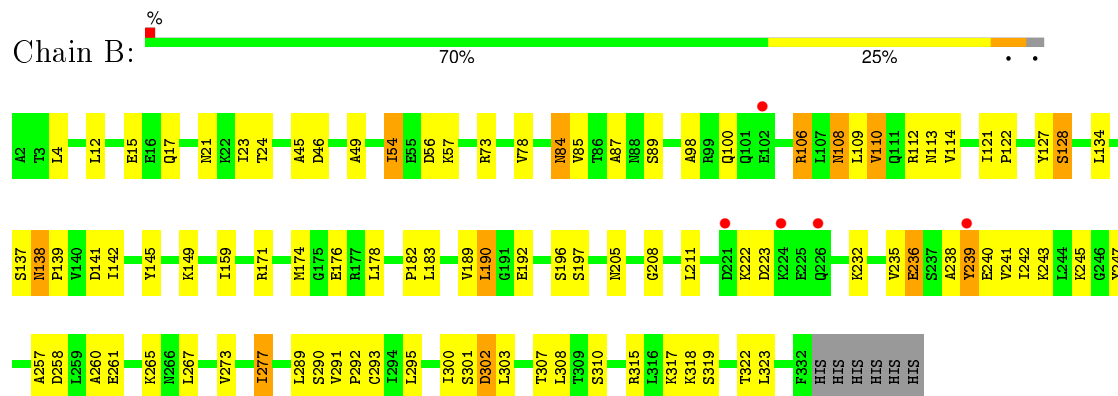
3 Residue-property plots

These plots are drawn for all protein, RNA and DNA chains in the entry. The first graphic for a chain summarises the proportions of errors displayed in the second graphic. The second graphic shows the sequence view annotated by issues in geometry and electron density. Residues are color-coded according to the number of geometric quality criteria for which they contain at least one outlier: green = 0, yellow = 1, orange = 2 and red = 3 or more. A red dot above a residue indicates a poor fit to the electron density ($RSRZ > 2$). Stretches of 2 or more consecutive residues without any outlier are shown as a green connector. Residues present in the sample, but not in the model, are shown in grey.

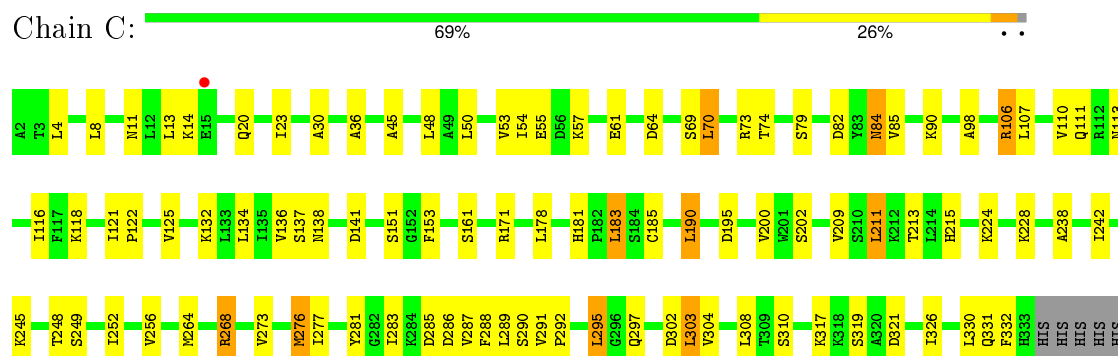
• Molecule 1: L-lactate dehydrogenase A chain



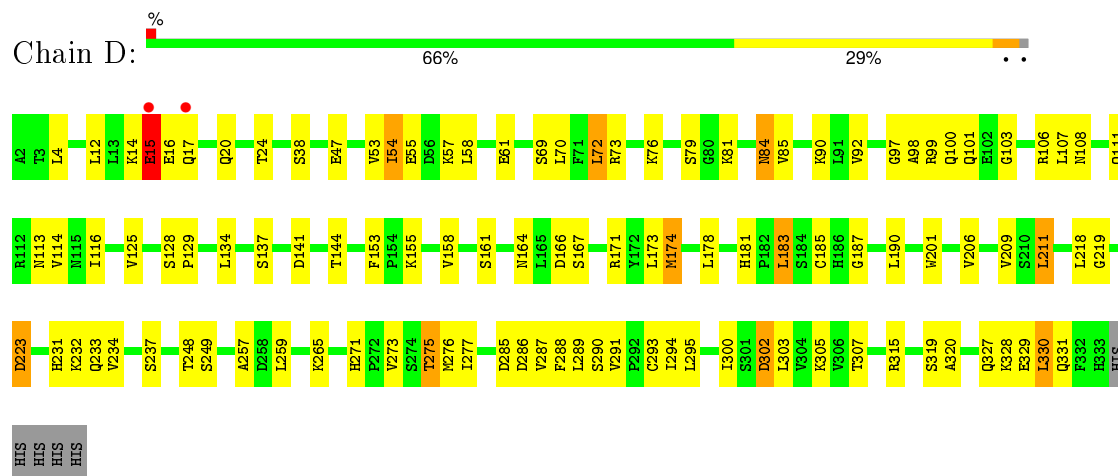
• Molecule 1: L-lactate dehydrogenase A chain



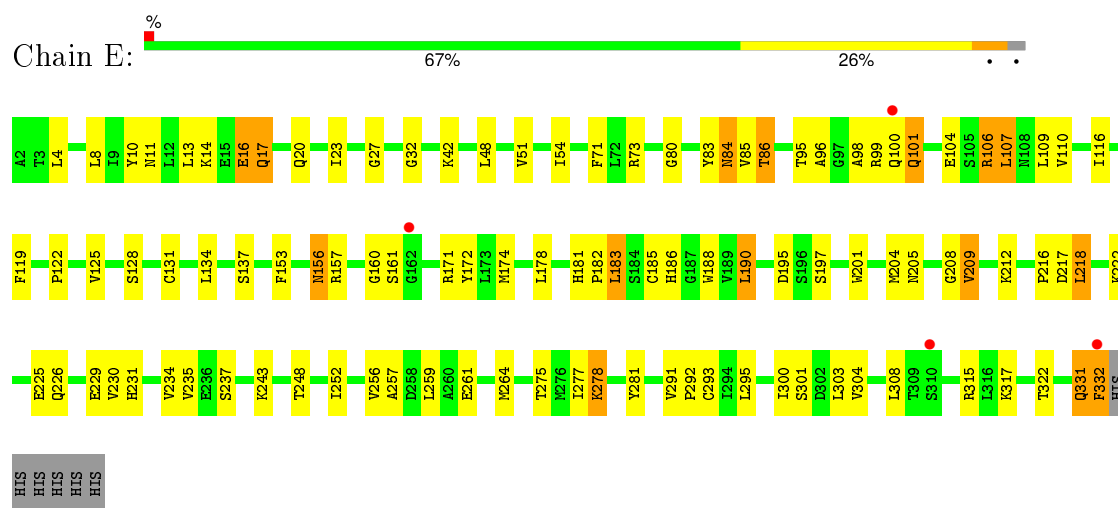
• Molecule 1: L-lactate dehydrogenase A chain



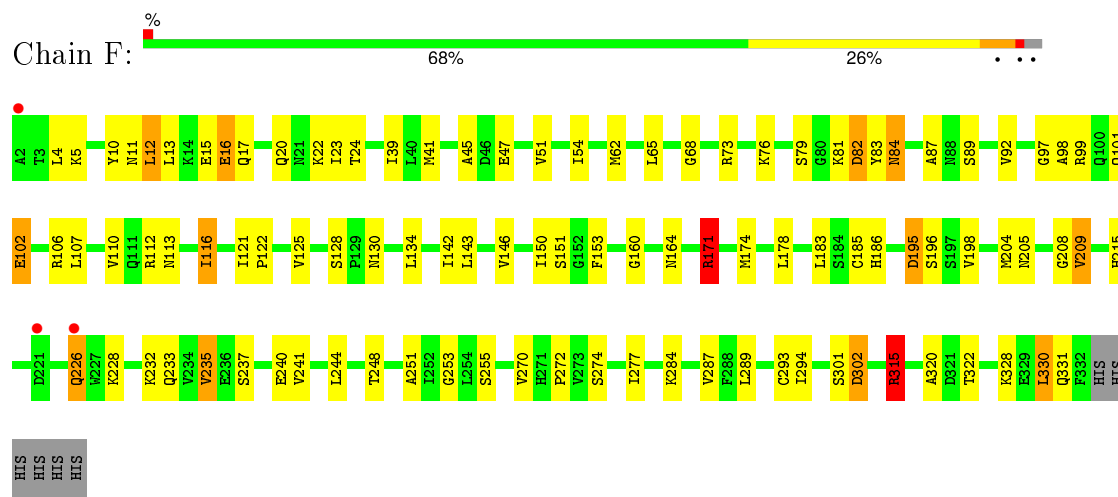
- Molecule 1: L-lactate dehydrogenase A chain



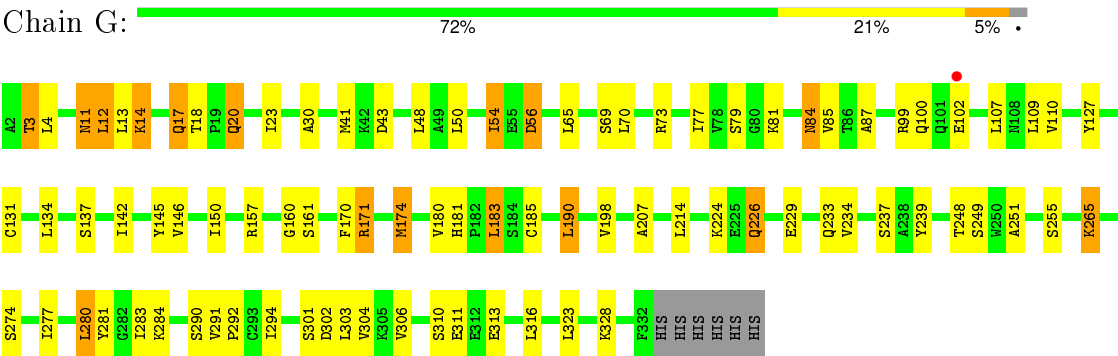
- Molecule 1: L-lactate dehydrogenase A chain



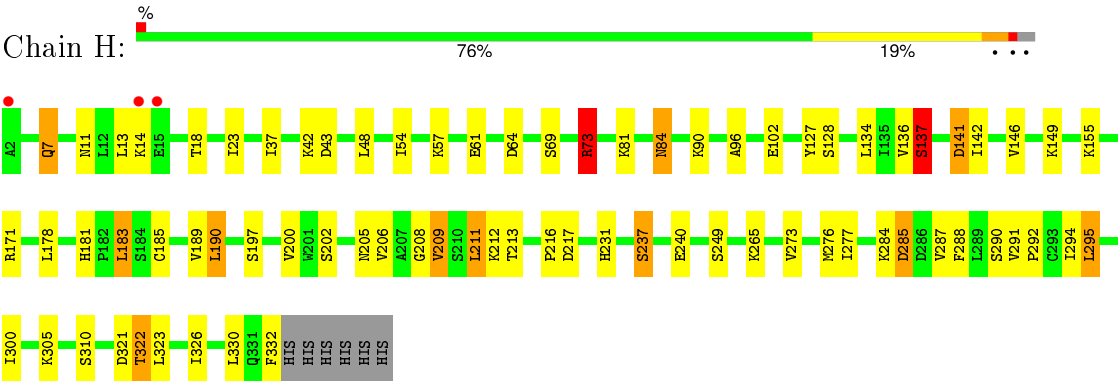
- Molecule 1: L-lactate dehydrogenase A chain



- Molecule 1: L-lactate dehydrogenase A chain



• Molecule 1: L-lactate dehydrogenase A chain



4 Data and refinement statistics

Property	Value	Source
Space group	P 31 2 1	Depositor
Cell constants a, b, c, α , β , γ	147.19Å 147.19Å 334.63Å 90.00° 90.00° 120.00°	Depositor
Resolution (Å)	34.59 – 3.20 34.59 – 3.20	Depositor EDS
% Data completeness (in resolution range)	99.7 (34.59-3.20) 99.8 (34.59-3.20)	Depositor EDS
R_{merge}	(Not available)	Depositor
R_{sym}	0.18	Depositor
$\langle I/\sigma(I) \rangle$ ¹	1.90 (at 3.18Å)	Xtriage
Refinement program	REFMAC 5.7.0029	Depositor
R, R_{free}	0.172 , 0.271 0.172 , 0.264	Depositor DCC
R_{free} test set	3762 reflections (5.69%)	DCC
Wilson B-factor (Å ²)	69.2	Xtriage
Anisotropy	0.348	Xtriage
Bulk solvent k_{sol} (e/Å ³), B_{sol} (Å ²)	0.31 , 43.8	EDS
Estimated twinning fraction	0.026 for -h,-k,l	Xtriage
L-test for twinning ²	$\langle L \rangle = 0.48$, $\langle L^2 \rangle = 0.31$	Xtriage
Outliers	0 of 69867 reflections	Xtriage
F_o, F_c correlation	0.94	EDS
Total number of atoms	21267	wwPDB-VP
Average B, all atoms (Å ²)	72.0	wwPDB-VP

Xtriage's analysis on translational NCS is as follows: *The largest off-origin peak in the Patterson function is 1.50% of the height of the origin peak. No significant pseudotranslation is detected.*

¹Intensities estimated from amplitudes.

²Theoretical values of $\langle |L| \rangle$, $\langle L^2 \rangle$ for acentric reflections are 0.5, 0.375 respectively for untwinned datasets, and 0.333, 0.2 for perfectly twinned datasets.

5 Model quality

5.1 Standard geometry

Bond lengths and bond angles in the following residue types are not validated in this section: 38Q

The Z score for a bond length (or angle) is the number of standard deviations the observed value is removed from the expected value. A bond length (or angle) with $|Z| > 5$ is considered an outlier worth inspection. RMSZ is the root-mean-square of all Z scores of the bond lengths (or angles).

Mol	Chain	Bond lengths		Bond angles	
		RMSZ	# Z >5	RMSZ	# Z >5
1	A	0.71	0/2685	0.91	1/3632 (0.0%)
1	B	0.70	0/2636	0.89	6/3566 (0.2%)
1	C	0.72	0/2673	0.93	4/3616 (0.1%)
1	D	0.68	0/2691	0.87	4/3637 (0.1%)
1	E	0.62	0/2669	0.83	0/3610
1	F	0.68	0/2711	0.90	3/3665 (0.1%)
1	G	0.67	0/2648	0.89	3/3581 (0.1%)
1	H	0.61	0/2624	0.83	2/3550 (0.1%)
All	All	0.68	0/21337	0.88	23/28857 (0.1%)

Chiral center outliers are detected by calculating the chiral volume of a chiral center and verifying if the center is modelled as a planar moiety or with the opposite hand. A planarity outlier is detected by checking planarity of atoms in a peptide group, atoms in a mainchain group or atoms of a sidechain that are expected to be planar.

Mol	Chain	#Chirality outliers	#Planarity outliers
1	D	0	1
1	G	0	2
1	H	0	1
All	All	0	4

There are no bond length outliers.

The worst 5 of 23 bond angle outliers are listed below:

Mol	Chain	Res	Type	Atoms	Z	Observed(°)	Ideal(°)
1	C	82	ASP	CB-CG-OD1	8.01	125.51	118.30
1	C	82	ASP	CB-CG-OD2	-7.30	111.73	118.30
1	D	106	ARG	NE-CZ-NH1	6.13	123.36	120.30
1	G	43	ASP	CB-CG-OD1	5.98	123.68	118.30
1	B	223	ASP	CB-CG-OD1	5.92	123.63	118.30

There are no chirality outliers.

All (4) planarity outliers are listed below:

Mol	Chain	Res	Type	Group
1	D	103	GLY	Peptide
1	G	14	LYS	Peptide
1	G	17	GLN	Peptide
1	H	137	SER	Peptide

5.2 Too-close contacts

In the following table, the Non-H and H(model) columns list the number of non-hydrogen atoms and hydrogen atoms in the chain respectively. The H(added) column lists the number of hydrogen atoms added and optimized by MolProbity. The Clashes column lists the number of clashes within the asymmetric unit, whereas Symm-Clashes lists symmetry related clashes.

Mol	Chain	Non-H	H(model)	H(added)	Clashes	Symm-Clashes
1	A	2640	0	2710	56	0
1	B	2592	0	2673	52	1
1	C	2628	0	2700	57	0
1	D	2646	0	2723	68	0
1	E	2624	0	2699	69	0
1	F	2666	0	2749	53	0
1	G	2604	0	2678	45	1
1	H	2579	0	2661	34	0
2	A	33	0	18	0	0
2	B	33	0	18	0	0
2	C	33	0	18	5	0
2	D	33	0	18	5	0
2	E	33	0	18	5	0
2	F	33	0	18	2	0
2	G	33	0	18	1	0
2	H	33	0	18	2	0
3	A	2	0	0	0	0
3	B	1	0	0	0	0
3	C	5	0	0	0	0
3	D	6	0	0	0	0
3	E	1	0	0	0	0
3	F	2	0	0	1	0
3	G	6	0	0	0	0
3	H	1	0	0	0	0
All	All	21267	0	21737	406	1

The all-atom clashscore is defined as the number of clashes found per 1000 atoms (including

hydrogen atoms). The all-atom clashscore for this structure is 9.

The worst 5 of 406 close contacts within the same asymmetric unit are listed below, sorted by their clash magnitude.

Atom-1	Atom-2	Interatomic distance (Å)	Clash overlap (Å)
1:C:70[A]:LEU:O	1:C:70[A]:LEU:HD13	1.51	1.10
1:E:106[A]:ARG:HH11	1:E:106[A]:ARG:CG	1.66	1.07
1:E:106[A]:ARG:HH11	1:E:106[A]:ARG:HG3	1.21	1.04
1:B:23:ILE:HD12	1:B:45:ALA:HB2	1.49	0.94
1:B:137:SER:OG	1:B:138:ASN:N	2.00	0.92

All (1) symmetry-related close contacts are listed below. The label for Atom-2 includes the symmetry operator and encoded unit-cell translations to be applied.

Atom-1	Atom-2	Interatomic distance (Å)	Clash overlap (Å)
1:B:308:LEU:O	1:G:226:GLN:NE2[5_554]	2.08	0.12

5.3 Torsion angles [i](#)

5.3.1 Protein backbone [i](#)

In the following table, the Percentiles column shows the percent Ramachandran outliers of the chain as a percentile score with respect to all X-ray entries followed by that with respect to entries of similar resolution.

The Analysed column shows the number of residues for which the backbone conformation was analysed, and the total number of residues.

Mol	Chain	Analysed	Favoured	Allowed	Outliers	Percentiles	
1	A	338/337 (100%)	308 (91%)	26 (8%)	4 (1%)	16	60
1	B	332/337 (98%)	301 (91%)	26 (8%)	5 (2%)	13	55
1	C	336/337 (100%)	310 (92%)	25 (7%)	1 (0%)	46	85
1	D	338/337 (100%)	299 (88%)	34 (10%)	5 (2%)	13	55
1	E	335/337 (99%)	295 (88%)	33 (10%)	7 (2%)	9	46
1	F	340/337 (101%)	305 (90%)	33 (10%)	2 (1%)	30	75
1	G	333/337 (99%)	299 (90%)	30 (9%)	4 (1%)	16	60
1	H	330/337 (98%)	300 (91%)	26 (8%)	4 (1%)	16	60
All	All	2682/2696 (100%)	2417 (90%)	233 (9%)	32 (1%)	16	60

5 of 32 Ramachandran outliers are listed below:

Mol	Chain	Res	Type
1	B	138	ASN
1	B	239	TYR
1	C	286	ASP
1	D	15	GLU
1	D	223	ASP

5.3.2 Protein sidechains ⓘ

In the following table, the Percentiles column shows the percent sidechain outliers of the chain as a percentile score with respect to all X-ray entries followed by that with respect to entries of similar resolution.

The Analysed column shows the number of residues for which the sidechain conformation was analysed, and the total number of residues.

Mol	Chain	Analysed	Rotameric	Outliers	Percentiles	
1	A	295/293 (101%)	262 (89%)	33 (11%)	7	32
1	B	290/293 (99%)	263 (91%)	27 (9%)	11	41
1	C	294/293 (100%)	253 (86%)	41 (14%)	4	20
1	D	296/293 (101%)	264 (89%)	32 (11%)	8	33
1	E	293/293 (100%)	259 (88%)	34 (12%)	7	30
1	F	298/293 (102%)	260 (87%)	38 (13%)	5	25
1	G	291/293 (99%)	256 (88%)	35 (12%)	6	28
1	H	288/293 (98%)	253 (88%)	35 (12%)	6	27
All	All	2345/2344 (100%)	2070 (88%)	275 (12%)	7	30

5 of 275 residues with a non-rotameric sidechain are listed below:

Mol	Chain	Res	Type
1	D	271	HIS
1	E	183	LEU
1	H	178	LEU
1	D	302	ASP
1	E	86	THR

Some sidechains can be flipped to improve hydrogen bonding and reduce clashes. 5 of 70 such sidechains are listed below:

Mol	Chain	Res	Type
1	D	164	ASN
1	E	156	ASN
1	H	100	GLN
1	D	205	ASN
1	E	20	GLN

5.3.3 RNA ⓘ

There are no RNA molecules in this entry.

5.4 Non-standard residues in protein, DNA, RNA chains ⓘ

There are no non-standard protein/DNA/RNA residues in this entry.

5.5 Carbohydrates ⓘ

There are no carbohydrates in this entry.

5.6 Ligand geometry ⓘ

8 ligands are modelled in this entry.

In the following table, the Counts columns list the number of bonds (or angles) for which Mogul statistics could be retrieved, the number of bonds (or angles) that are observed in the model and the number of bonds (or angles) that are defined in the chemical component dictionary. The Link column lists molecule types, if any, to which the group is linked. The Z score for a bond length (or angle) is the number of standard deviations the observed value is removed from the expected value. A bond length (or angle) with $|Z| > 2$ is considered an outlier worth inspection. RMSZ is the root-mean-square of all Z scores of the bond lengths (or angles).

Mol	Type	Chain	Res	Link	Bond lengths			Bond angles		
					Counts	RMSZ	$\# Z > 2$	Counts	RMSZ	$\# Z > 2$
2	38Q	A	501	-	33,36,36	1.20	3 (9%)	41,51,51	3.33	19 (46%)
2	38Q	B	501	-	33,36,36	1.34	4 (12%)	41,51,51	2.90	16 (39%)
2	38Q	C	501	-	33,36,36	1.46	4 (12%)	41,51,51	3.02	14 (34%)
2	38Q	D	501	-	33,36,36	1.06	3 (9%)	41,51,51	3.59	19 (46%)
2	38Q	E	501	-	33,36,36	1.42	6 (18%)	41,51,51	3.38	19 (46%)
2	38Q	F	501	-	33,36,36	1.38	5 (15%)	41,51,51	3.08	18 (43%)
2	38Q	G	501	-	33,36,36	1.13	2 (6%)	41,51,51	2.71	11 (26%)
2	38Q	H	501	-	33,36,36	1.21	1 (3%)	41,51,51	3.48	20 (48%)

In the following table, the Chirals column lists the number of chiral outliers, the number of chiral centers analysed, the number of these observed in the model and the number defined in the chemical component dictionary. Similar counts are reported in the Torsion and Rings columns. '-' means no outliers of that kind were identified.

Mol	Type	Chain	Res	Link	Chirals	Torsions	Rings
2	38Q	A	501	-	-	0/16/20/20	0/4/4/4
2	38Q	B	501	-	-	0/16/20/20	0/4/4/4
2	38Q	C	501	-	-	0/16/20/20	0/4/4/4
2	38Q	D	501	-	-	2/16/20/20	0/4/4/4
2	38Q	E	501	-	-	0/16/20/20	0/4/4/4
2	38Q	F	501	-	-	0/16/20/20	0/4/4/4
2	38Q	G	501	-	-	0/16/20/20	0/4/4/4
2	38Q	H	501	-	-	0/16/20/20	0/4/4/4

The worst 5 of 28 bond length outliers are listed below:

Mol	Chain	Res	Type	Atoms	Z	Observed(Å)	Ideal(Å)
2	B	501	38Q	C5-C6	-2.39	1.38	1.42
2	D	501	38Q	C23-C28	-2.39	1.39	1.41
2	A	501	38Q	C12-N11	-2.19	1.36	1.40
2	C	501	38Q	C9-C10	-2.18	1.37	1.41
2	B	501	38Q	C10-C5	-2.11	1.39	1.43

The worst 5 of 136 bond angle outliers are listed below:

Mol	Chain	Res	Type	Atoms	Z	Observed(°)	Ideal(°)
2	H	501	38Q	N25-C26-N27	-13.86	119.49	128.33
2	E	501	38Q	N25-C26-N27	-11.68	120.88	128.33
2	A	501	38Q	N25-C26-N27	-11.50	121.00	128.33
2	D	501	38Q	N25-C26-N27	-11.38	121.07	128.33
2	C	501	38Q	N25-C26-N27	-10.41	121.69	128.33

There are no chirality outliers.

All (2) torsion outliers are listed below:

Mol	Chain	Res	Type	Atoms
2	D	501	38Q	C30-O29-C28-N27
2	D	501	38Q	C30-O29-C28-C23

There are no ring outliers.

6 monomers are involved in 20 short contacts:

Mol	Chain	Res	Type	Clashes	Symm-Clashes
2	C	501	38Q	5	0
2	D	501	38Q	5	0
2	E	501	38Q	5	0
2	F	501	38Q	2	0
2	G	501	38Q	1	0
2	H	501	38Q	2	0

5.7 Other polymers [i](#)

There are no such residues in this entry.

5.8 Polymer linkage issues [i](#)

There are no chain breaks in this entry.

6 Fit of model and data ⓘ

6.1 Protein, DNA and RNA chains ⓘ

In the following table, the column labelled ‘#RSRZ> 2’ contains the number (and percentage) of RSRZ outliers, followed by percent RSRZ outliers for the chain as percentile scores relative to all X-ray entries and entries of similar resolution. The OWAB column contains the minimum, median, 95th percentile and maximum values of the occupancy-weighted average B-factor per residue. The column labelled ‘Q< 0.9’ lists the number of (and percentage) of residues with an average occupancy less than 0.9.

Mol	Chain	Analysed	<RSRZ>	#RSRZ>2	OWAB(Å ²)	Q<0.9
1	A	332/337 (98%)	-0.42	1 (0%) 94 93	43, 61, 90, 135	0
1	B	331/337 (98%)	-0.33	5 (1%) 76 63	42, 72, 106, 144	0
1	C	332/337 (98%)	-0.53	1 (0%) 94 93	40, 60, 95, 126	0
1	D	332/337 (98%)	-0.49	2 (0%) 90 84	42, 62, 103, 153	0
1	E	331/337 (98%)	-0.23	4 (1%) 81 69	56, 84, 118, 135	0
1	F	331/337 (98%)	-0.45	3 (0%) 85 78	43, 63, 109, 135	0
1	G	331/337 (98%)	-0.56	1 (0%) 94 93	45, 63, 98, 119	0
1	H	331/337 (98%)	-0.33	3 (0%) 85 78	52, 77, 108, 143	0
All	All	2651/2696 (98%)	-0.42	20 (0%) 87 80	40, 68, 107, 153	0

The worst 5 of 20 RSRZ outliers are listed below:

Mol	Chain	Res	Type	RSRZ
1	B	239	TYR	3.7
1	B	221	ASP	3.5
1	D	17	GLN	3.4
1	B	226[A]	GLN	3.2
1	H	14	LYS	2.8

6.2 Non-standard residues in protein, DNA, RNA chains ⓘ

There are no non-standard protein/DNA/RNA residues in this entry.

6.3 Carbohydrates ⓘ

There are no carbohydrates in this entry.

6.4 Ligands [i](#)

In the following table, the Atoms column lists the number of modelled atoms in the group and the number defined in the chemical component dictionary. LLDF column lists the quality of electron density of the group with respect to its neighbouring residues in protein, DNA or RNA chains. The B-factors column lists the minimum, median, 95th percentile and maximum values of B factors of atoms in the group. The column labelled 'Q< 0.9' lists the number of atoms with occupancy less than 0.9.

Mol	Type	Chain	Res	Atoms	RSCC	RSR	LLDF	B-factors(Å ²)	Q<0.9
2	38Q	A	501	33/33	0.96	0.31	2.80	53,70,78,94	0
2	38Q	E	501	33/33	0.90	0.31	1.81	78,100,110,112	0
2	38Q	G	501	33/33	0.96	0.25	1.17	43,54,72,80	0
2	38Q	H	501	33/33	0.93	0.32	1.06	70,82,91,94	0
2	38Q	C	501	33/33	0.94	0.26	0.93	45,58,71,76	0
2	38Q	D	501	33/33	0.93	0.23	0.69	43,51,75,86	0
2	38Q	B	501	33/33	0.95	0.25	0.42	48,62,72,80	0
2	38Q	F	501	33/33	0.97	0.18	0.14	43,58,70,78	0

6.5 Other polymers [i](#)

There are no such residues in this entry.