



Full wwPDB X-ray Structure Validation Report ⓘ

Feb 1, 2016 – 12:21 PM GMT

PDB ID : 3QXQ
Title : Structure of the bacterial cellulose synthase subunit Z in complex with cellopentaose
Authors : Zimmer, J.
Deposited on : 2011-03-02
Resolution : 2.20 Å(reported)

This is a Full wwPDB X-ray Structure Validation Report for a publicly released PDB entry.
We welcome your comments at validation@mail.wwpdb.org
A user guide is available at
<http://wwpdb.org/validation/2016/XrayValidationReportHelp>
with specific help available everywhere you see the ⓘ symbol.

The following versions of software and data (see [references ⓘ](#)) were used in the production of this report:

MolProbity : 4.02b-467
Mogul : 1.7 (RC4), CSD as536be (2015)
Xtriage (Phenix) : 1.9-1692
EDS : rb-20026688
Percentile statistics : 20151230.v01 (using entries in the PDB archive December 30th 2015)
Refmac : 5.8.0135
CCP4 : 6.5.0
Ideal geometry (proteins) : Engh & Huber (2001)
Ideal geometry (DNA, RNA) : Parkinson et al. (1996)
Validation Pipeline (wwPDB-VP) : trunk26865

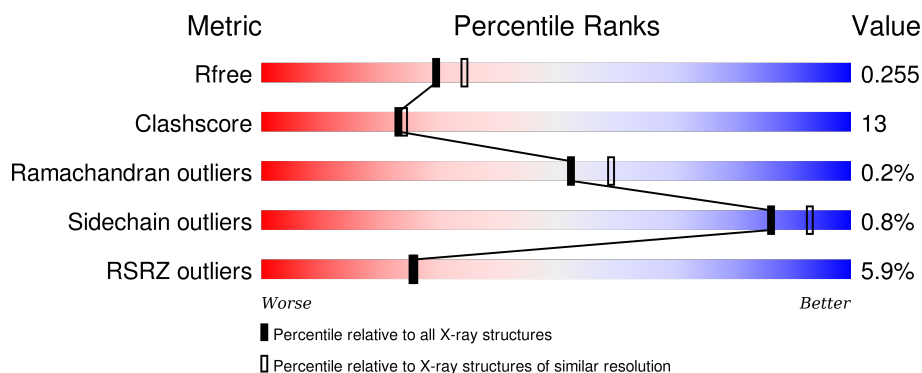
1 Overall quality at a glance

The following experimental techniques were used to determine the structure:

X-RAY DIFFRACTION

The reported resolution of this entry is 2.20 Å.

Percentile scores (ranging between 0-100) for global validation metrics of the entry are shown in the following graphic. The table shows the number of entries on which the scores are based.



Metric	Whole archive (#Entries)	Similar resolution (#Entries, resolution range(Å))
R_{free}	91344	3774 (2.20-2.20)
Clashscore	102246	4477 (2.20-2.20)
Ramachandran outliers	100387	4404 (2.20-2.20)
Sidechain outliers	100360	4405 (2.20-2.20)
RSRZ outliers	91569	3781 (2.20-2.20)

The table below summarises the geometric issues observed across the polymeric chains and their fit to the electron density. The red, orange, yellow and green segments on the lower bar indicate the fraction of residues that contain outliers for ≥ 3 , 2, 1 and 0 types of geometric quality criteria. A grey segment represents the fraction of residues that are not modelled. The numeric value for each fraction is indicated below the corresponding segment, with a dot representing fractions $\leq 5\%$. The upper red bar (where present) indicates the fraction of residues that have poor fit to the electron density. The numeric value is given above the bar.

Mol	Chain	Length	Quality of chain
1	A	355	<div> <div>18%</div> <div>82%</div> <div>13%</div> <div>5%</div> </div>
1	B	355	<div> <div>2%</div> <div>79%</div> <div>16%</div> <div>5%</div> </div>
1	C	355	<div> <div>2%</div> <div>79%</div> <div>17%</div> <div>5%</div> </div>
1	D	355	<div> <div>18%</div> <div>70%</div> <div>24%</div> <div>5%</div> </div>

The following table lists non-polymeric compounds, carbohydrate monomers and non-standard

residues in protein, DNA, RNA chains that are outliers for geometric or electron-density-fit criteria:

Mol	Type	Chain	Res	Chirality	Geometry	Clashes	Electron density
2	CE5	B	2416	-	-	-	X
2	CE5	C	2416	-	-	-	X

2 Entry composition

There are 3 unique types of molecules in this entry. The entry contains 11761 atoms, of which 0 are hydrogens and 0 are deuteriums.

In the tables below, the ZeroOcc column contains the number of atoms modelled with zero occupancy, the AltConf column contains the number of residues with at least one atom in alternate conformation and the Trace column contains the number of residues modelled with at most 2 atoms.

- Molecule 1 is a protein called Endoglucanase.

Mol	Chain	Residues	Atoms					ZeroOcc	AltConf	Trace
1	A	338	Total	C	N	O	S	0	1	0
			2736	1750	476	500	10			
1	B	338	Total	C	N	O	S	0	0	0
			2728	1745	473	500	10			
1	C	338	Total	C	N	O	S	0	0	0
			2728	1745	473	500	10			
1	D	338	Total	C	N	O	S	0	0	0
			2728	1745	473	500	10			

There are 36 discrepancies between the modelled and reference sequences:

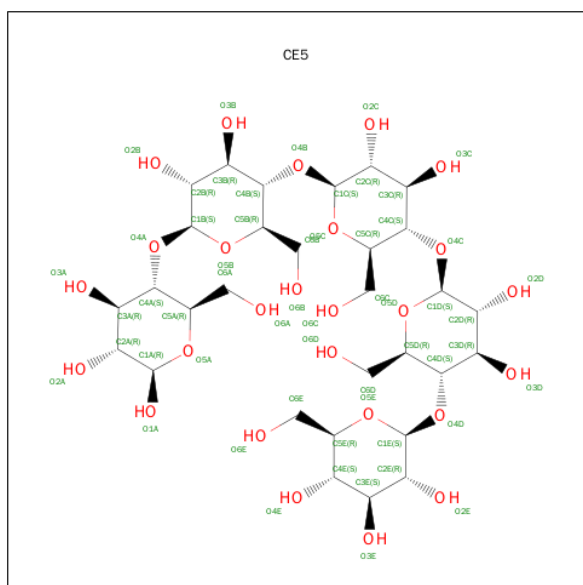
Chain	Residue	Modelled	Actual	Comment	Reference
A	55	GLN	GLU	ENGINEERED MUTATION	UNP P37651
A	369	LEU	-	EXPRESSION TAG	UNP P37651
A	370	GLU	-	EXPRESSION TAG	UNP P37651
A	371	HIS	-	EXPRESSION TAG	UNP P37651
A	372	HIS	-	EXPRESSION TAG	UNP P37651
A	373	HIS	-	EXPRESSION TAG	UNP P37651
A	374	HIS	-	EXPRESSION TAG	UNP P37651
A	375	HIS	-	EXPRESSION TAG	UNP P37651
A	376	HIS	-	EXPRESSION TAG	UNP P37651
B	55	GLN	GLU	ENGINEERED MUTATION	UNP P37651
B	369	LEU	-	EXPRESSION TAG	UNP P37651
B	370	GLU	-	EXPRESSION TAG	UNP P37651
B	371	HIS	-	EXPRESSION TAG	UNP P37651
B	372	HIS	-	EXPRESSION TAG	UNP P37651
B	373	HIS	-	EXPRESSION TAG	UNP P37651
B	374	HIS	-	EXPRESSION TAG	UNP P37651
B	375	HIS	-	EXPRESSION TAG	UNP P37651
B	376	HIS	-	EXPRESSION TAG	UNP P37651
C	55	GLN	GLU	ENGINEERED MUTATION	UNP P37651
C	369	LEU	-	EXPRESSION TAG	UNP P37651
C	370	GLU	-	EXPRESSION TAG	UNP P37651

Continued on next page...

Continued from previous page...

Chain	Residue	Modelled	Actual	Comment	Reference
C	371	HIS	-	EXPRESSION TAG	UNP P37651
C	372	HIS	-	EXPRESSION TAG	UNP P37651
C	373	HIS	-	EXPRESSION TAG	UNP P37651
C	374	HIS	-	EXPRESSION TAG	UNP P37651
C	375	HIS	-	EXPRESSION TAG	UNP P37651
C	376	HIS	-	EXPRESSION TAG	UNP P37651
D	55	GLN	GLU	ENGINEERED MUTATION	UNP P37651
D	369	LEU	-	EXPRESSION TAG	UNP P37651
D	370	GLU	-	EXPRESSION TAG	UNP P37651
D	371	HIS	-	EXPRESSION TAG	UNP P37651
D	372	HIS	-	EXPRESSION TAG	UNP P37651
D	373	HIS	-	EXPRESSION TAG	UNP P37651
D	374	HIS	-	EXPRESSION TAG	UNP P37651
D	375	HIS	-	EXPRESSION TAG	UNP P37651
D	376	HIS	-	EXPRESSION TAG	UNP P37651

- Molecule 2 is SUGAR (CELLOPENTAOSE) (three-letter code: CE5) (formula: $C_{30}H_{52}O_{26}$).

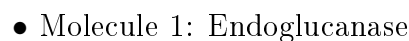
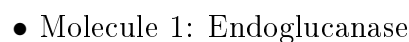
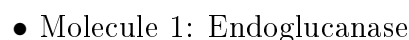


Mol	Chain	Residues	Atoms			ZeroOcc	AltConf
2	A	1	Total	C	O	0	0
			56	30	26		
2	B	1	Total	C	O	0	0
			56	30	26		
2	C	1	Total	C	O	0	0
			56	30	26		
2	D	1	Total	C	O	0	0
			56	30	26		

- Molecule 3 is water.

Mol	Chain	Residues	Atoms		ZeroOcc	AltConf
3	A	195	Total 195	O 195	0	0
3	B	185	Total 185	O 185	0	0
3	C	162	Total 162	O 162	0	0
3	D	75	Total 75	O 75	0	0

- Molecule 1: Endoglucanase





4 Data and refinement statistics

Property	Value	Source
Space group	P 1 21 1	Depositor
Cell constants a, b, c, α , β , γ	90.68 Å 99.61 Å 93.07 Å 90.00° 102.98° 90.00°	Depositor
Resolution (Å)	35.00 – 2.20 43.65 – 2.00	Depositor EDS
% Data completeness (in resolution range)	98.6 (35.00-2.20) 97.8 (43.65-2.00)	Depositor EDS
R_{merge}	(Not available)	Depositor
R_{sym}	(Not available)	Depositor
$\langle I/\sigma(I) \rangle$ ¹	3.82 (at 2.00 Å)	Xtriage
Refinement program	REFMAC 5.5.0109	Depositor
R, R_{free}	0.168 , 0.227 0.209 , 0.255	Depositor DCC
R_{free} test set	4046 reflections (5.28%)	DCC
Wilson B-factor (Å ²)	23.8	Xtriage
Anisotropy	0.908	Xtriage
Bulk solvent k_{sol} (e/Å ³), B_{sol} (Å ²)	0.35 , 34.7	EDS
Estimated twinning fraction	0.018 for l,-k,h	Xtriage
L-test for twinning ²	$\langle L \rangle = 0.49$, $\langle L^2 \rangle = 0.32$	Xtriage
Outliers	0 of 105754 reflections	Xtriage
F_o, F_c correlation	0.94	EDS
Total number of atoms	11761	wwPDB-VP
Average B, all atoms (Å ²)	14.0	wwPDB-VP

Xtriage's analysis on translational NCS is as follows: *The largest off-origin peak in the Patterson function is 5.33% of the height of the origin peak. No significant pseudotranslation is detected.*

¹Intensities estimated from amplitudes.

²Theoretical values of $\langle |L| \rangle$, $\langle L^2 \rangle$ for acentric reflections are 0.5, 0.375 respectively for untwinned datasets, and 0.333, 0.2 for perfectly twinned datasets.

5 Model quality [i](#)

5.1 Standard geometry [i](#)

Bond lengths and bond angles in the following residue types are not validated in this section: CE5

The Z score for a bond length (or angle) is the number of standard deviations the observed value is removed from the expected value. A bond length (or angle) with $|Z| > 5$ is considered an outlier worth inspection. RMSZ is the root-mean-square of all Z scores of the bond lengths (or angles).

Mol	Chain	Bond lengths		Bond angles	
		RMSZ	$\# Z > 5$	RMSZ	$\# Z > 5$
1	A	0.33	0/2819	0.46	0/3825
1	B	0.33	0/2808	0.47	0/3811
1	C	0.30	0/2808	0.44	0/3811
1	D	0.29	0/2808	0.43	0/3811
All	All	0.31	0/11243	0.45	0/15258

There are no bond length outliers.

There are no bond angle outliers.

There are no chirality outliers.

There are no planarity outliers.

5.2 Too-close contacts [i](#)

In the following table, the Non-H and H(model) columns list the number of non-hydrogen atoms and hydrogen atoms in the chain respectively. The H(added) column lists the number of hydrogen atoms added and optimized by MolProbity. The Clashes column lists the number of clashes within the asymmetric unit, whereas Symm-Clashes lists symmetry related clashes.

Mol	Chain	Non-H	H(model)	H(added)	Clashes	Symm-Clashes
1	A	2736	0	2657	56	0
1	B	2728	0	2644	49	0
1	C	2728	0	2644	66	0
1	D	2728	0	2644	113	0
2	A	56	0	52	10	0
2	B	56	0	52	5	0
2	C	56	0	52	14	0
2	D	56	0	52	10	0
3	A	195	0	0	10	0

Continued on next page...

Continued from previous page...

Mol	Chain	Non-H	H(model)	H(added)	Clashes	Symm-Clashes
3	B	185	0	0	5	0
3	C	162	0	0	5	0
3	D	75	0	0	8	0
All	All	11761	0	10797	293	0

The all-atom clashscore is defined as the number of clashes found per 1000 atoms (including hydrogen atoms). The all-atom clashscore for this structure is 13.

All (293) close contacts within the same asymmetric unit are listed below, sorted by their clash magnitude.

Atom-1	Atom-2	Interatomic distance (Å)	Clash overlap (Å)
1:A:311[B]:ARG:HG3	1:B:311:ARG:NH1	1.52	1.24
1:C:103:ASN:HB2	1:C:105:LYS:H	1.01	1.13
1:A:101:LYS:HE3	1:A:107:GLU:HG3	1.17	1.09
2:D:2416:CE5:H6E1	2:D:2416:CE5:H2E	1.37	1.05
1:B:96:TRP:CZ3	2:B:2416:CE5:H6A1	1.93	1.04
1:D:186:THR:HG22	3:D:382:HOH:O	1.58	1.02
1:C:29:GLU:O	1:C:33:LYS:HD3	1.59	1.01
1:A:311[B]:ARG:HG3	1:B:311:ARG:HH11	1.19	0.99
1:A:311[B]:ARG:CG	1:B:311:ARG:HH11	1.76	0.98
1:A:96:TRP:CZ3	2:A:2416:CE5:H6A1	1.99	0.97
1:B:267:ARG:HD3	3:B:829:HOH:O	1.64	0.96
1:B:96:TRP:HZ3	2:B:2416:CE5:H6A1	1.28	0.96
1:D:260:GLN:HG3	1:D:263:ARG:HH21	1.31	0.94
1:D:161:SER:O	1:D:204:THR:HG21	1.66	0.94
1:C:103:ASN:HB2	1:C:105:LYS:N	1.85	0.92
1:D:240:SER:HB3	1:D:285:VAL:HG12	1.53	0.90
2:D:2416:CE5:H1D	2:D:2416:CE5:H6C2	1.52	0.90
1:A:101:LYS:HE3	1:A:107:GLU:CG	2.01	0.89
1:C:81:GLN:HE21	1:C:89:LEU:H	1.21	0.89
1:D:49:ARG:CZ	1:D:51:ILE:HD11	2.04	0.88
2:C:2416:CE5:H1E	2:C:2416:CE5:C6D	2.04	0.88
1:D:162:MET:SD	1:D:204:THR:HG22	2.14	0.87
1:A:59:TYR:HD1	1:A:335:VAL:HG21	1.40	0.87
1:D:42:VAL:H	1:D:57:GLN:HE22	1.22	0.87
1:A:207:ARG:HD2	1:A:211:GLU:OE2	1.74	0.86
1:C:103:ASN:HB3	1:C:105:LYS:HG2	1.58	0.86
2:A:2416:CE5:H6D1	2:A:2416:CE5:H1E	1.54	0.86
1:C:103:ASN:CB	1:C:105:LYS:H	1.85	0.85
1:D:314:GLN:HE21	1:D:318:ARG:HH22	1.26	0.83
1:D:220:ASP:OD1	1:D:241:SER:HB2	1.79	0.82

Continued on next page...

Continued from previous page...

Atom-1	Atom-2	Interatomic distance (Å)	Clash overlap (Å)
1:D:172:GLU:HG2	1:D:173:ASP:H	1.45	0.81
1:D:172:GLU:HG2	1:D:173:ASP:N	1.95	0.81
1:A:311[B]:ARG:CG	1:B:311:ARG:NH1	2.35	0.80
1:D:96:TRP:HZ3	2:D:2416:CE5:H6A1	1.45	0.80
1:A:277:LYS:HG3	3:A:734:HOH:O	1.80	0.80
2:D:2416:CE5:C6A	2:D:2416:CE5:O1A	2.30	0.80
1:B:81:GLN:HE21	1:B:89:LEU:H	1.30	0.79
1:A:263:ARG:HG3	3:A:674:HOH:O	1.82	0.79
2:D:2416:CE5:C6E	2:D:2416:CE5:H2E	2.13	0.79
2:B:2416:CE5:HO6A	2:B:2416:CE5:HO1A	1.31	0.78
1:A:177:ARG:HD2	3:A:499:HOH:O	1.83	0.77
1:A:311[B]:ARG:NE	1:B:311:ARG:HH11	1.83	0.77
1:D:219:PRO:HG2	1:D:222:VAL:CG2	2.14	0.77
1:A:96:TRP:HZ3	2:A:2416:CE5:H6A1	1.46	0.76
1:D:59:TYR:CD1	1:D:335:VAL:HG11	2.20	0.76
1:B:272:ALA:O	1:B:276:GLU:HG3	1.84	0.76
1:C:329:ASP:HB2	3:C:713:HOH:O	1.84	0.75
1:A:207:ARG:CD	1:A:211:GLU:OE2	2.34	0.75
1:C:345:GLN:NE2	1:C:347:ARG:HH21	1.85	0.74
2:B:2416:CE5:O6A	2:B:2416:CE5:O1A	2.05	0.74
1:D:241:SER:OG	1:D:284:LYS:HG2	1.86	0.74
1:A:81:GLN:HE21	1:A:89:LEU:H	1.36	0.74
1:D:49:ARG:NE	1:D:51:ILE:HD11	2.04	0.73
1:D:219:PRO:HG2	1:D:222:VAL:HG22	1.70	0.73
1:A:101:LYS:CE	1:A:107:GLU:HG3	2.10	0.73
1:D:215:LYS:HD2	3:D:728:HOH:O	1.89	0.73
1:D:304:MET:HE2	1:D:304:MET:HA	1.71	0.73
1:B:346:HIS:HD2	1:B:359:ASP:OD2	1.70	0.72
1:A:311[B]:ARG:NH1	1:B:309:GLN:O	2.20	0.72
1:A:59:TYR:HD1	1:A:335:VAL:CG2	2.01	0.72
2:D:2416:CE5:C2E	2:D:2416:CE5:H6E1	2.17	0.71
2:A:2416:CE5:C6D	2:A:2416:CE5:H1E	2.20	0.71
1:A:47:ASP:OD2	1:A:49:ARG:HD3	1.90	0.71
1:D:162:MET:SD	1:D:204:THR:CG2	2.78	0.70
1:D:304:MET:CE	1:D:304:MET:HA	2.22	0.70
1:B:246:ARG:NH1	3:B:680:HOH:O	2.24	0.70
1:D:253:MET:CE	1:D:348:PHE:HE1	2.05	0.69
1:C:103:ASN:N	1:C:104:SER:HA	2.07	0.69
1:D:156:VAL:HG23	1:D:159:LEU:HB2	1.74	0.69
1:C:99:GLY:N	1:C:109:LEU:CD2	2.57	0.68
1:D:234:ALA:O	1:D:235:GLU:HB2	1.93	0.68

Continued on next page...

Continued from previous page...

Atom-1	Atom-2	Interatomic distance (Å)	Clash overlap (Å)
1:A:272:ALA:O	1:A:276:GLU:HG3	1.93	0.68
1:D:96:TRP:CZ3	2:D:2416:CE5:H6A1	2.29	0.67
1:D:172:GLU:CG	1:D:173:ASP:H	2.07	0.67
1:D:253:MET:HE1	1:D:348:PHE:CE1	2.30	0.67
2:C:2416:CE5:H1E	2:C:2416:CE5:O6D	1.96	0.66
1:D:253:MET:CE	1:D:348:PHE:CE1	2.77	0.66
1:C:225:GLU:OE1	1:C:228:LYS:HE2	1.94	0.66
1:D:42:VAL:H	1:D:57:GLN:NE2	1.91	0.66
1:A:206:GLN:OE1	1:A:263:ARG:NH2	2.29	0.65
2:C:2416:CE5:H1E	2:C:2416:CE5:H6D2	1.78	0.65
1:D:219:PRO:HB3	1:D:287:VAL:HG21	1.77	0.65
1:D:59:TYR:CD1	1:D:335:VAL:CG1	2.79	0.65
1:D:219:PRO:CG	1:D:222:VAL:HG22	2.27	0.64
2:C:2416:CE5:H6C2	2:C:2416:CE5:H1D	1.80	0.64
1:C:47:ASP:OD2	1:C:49:ARG:NH1	2.31	0.63
1:D:190:TYR:O	1:D:193:ARG:HG2	1.99	0.63
1:D:249:MET:O	1:D:253:MET:HG3	1.97	0.63
1:D:240:SER:HB3	1:D:285:VAL:CG1	2.27	0.63
1:B:81:GLN:NE2	1:B:89:LEU:H	1.97	0.62
1:C:304:MET:CE	1:C:308:LEU:HD21	2.29	0.62
1:D:51:ILE:HG21	1:D:97:LEU:CD1	2.30	0.62
1:D:172:GLU:CG	1:D:173:ASP:N	2.63	0.62
1:A:311[B]:ARG:CD	1:B:311:ARG:HH11	2.13	0.61
1:C:68:ASN:ND2	1:C:132:TRP:HE1	1.99	0.61
1:C:309:GLN:HA	1:D:311:ARG:NH1	2.15	0.61
1:D:295:LYS:HE2	1:D:320:ARG:NH1	2.16	0.61
1:D:235:GLU:HG2	3:D:819:HOH:O	2.00	0.60
1:A:96:TRP:CE3	2:A:2416:CE5:H6A1	2.36	0.60
1:C:309:GLN:HA	1:D:311:ARG:HH12	1.67	0.60
1:C:103:ASN:HD22	1:C:105:LYS:HB2	1.67	0.60
1:C:309:GLN:CA	1:D:311:ARG:HH12	2.14	0.60
1:C:276:GLU:HG2	1:C:313:ALA:CB	2.32	0.60
1:C:100:LYS:HB2	1:C:106:TRP:CZ3	2.38	0.59
1:C:101:LYS:CE	1:C:107:GLU:OE2	2.50	0.59
1:C:309:GLN:O	1:D:311:ARG:NH1	2.36	0.59
1:B:258:ASP:OD2	1:B:259:PRO:HD2	2.03	0.59
2:D:2416:CE5:H6A2	2:D:2416:CE5:O1A	2.00	0.59
1:A:311[A]:ARG:NE	1:B:314:GLN:HE22	2.00	0.58
1:D:224:TYR:CE2	1:D:229:GLY:HA2	2.38	0.58
1:C:103:ASN:CB	1:C:105:LYS:HG2	2.32	0.58
1:A:59:TYR:CD1	1:A:335:VAL:CG2	2.86	0.58

Continued on next page...

Continued from previous page...

Atom-1	Atom-2	Interatomic distance (Å)	Clash overlap (Å)
1:C:101:LYS:HE3	1:C:107:GLU:OE2	2.03	0.58
2:D:2416:CE5:C1D	2:D:2416:CE5:H6C2	2.31	0.57
1:B:45:PRO:HD3	3:B:788:HOH:O	2.04	0.57
1:D:59:TYR:CE1	1:D:335:VAL:HG11	2.40	0.57
1:D:49:ARG:NH2	1:D:51:ILE:CD1	2.68	0.57
1:B:228:LYS:HE3	3:B:832:HOH:O	2.04	0.57
1:D:253:MET:HE2	1:D:348:PHE:HE1	1.69	0.57
1:B:305:LEU:HB2	1:B:306:PRO:HD3	1.87	0.57
1:A:96:TRP:HZ3	2:A:2416:CE5:C6A	2.15	0.57
1:D:156:VAL:CG2	1:D:159:LEU:HB2	2.35	0.56
2:D:2416:CE5:O1A	2:D:2416:CE5:O6A	2.23	0.56
1:D:217:PHE:CD1	1:D:285:VAL:HG11	2.40	0.56
1:C:309:GLN:C	1:D:311:ARG:HH12	2.08	0.56
1:D:259:PRO:HB2	1:D:260:GLN:OE1	2.06	0.56
1:A:226:LYS:O	1:A:227:ASP:HB2	2.04	0.55
1:D:173:ASP:C	1:D:174:ASN:HD22	2.09	0.55
1:D:51:ILE:CG2	1:D:52:THR:N	2.70	0.55
1:D:28:TRP:CE2	1:D:32:LYS:HD2	2.42	0.55
1:D:240:SER:CB	1:D:285:VAL:HG12	2.32	0.55
1:B:37:SER:OG	1:B:41:ARG:HG2	2.06	0.54
1:C:46:SER:HB3	3:C:716:HOH:O	2.07	0.54
1:C:99:GLY:CA	1:C:109:LEU:HD21	2.38	0.54
1:D:150:ARG:NH1	3:D:435:HOH:O	2.41	0.54
2:C:2416:CE5:C6A	2:C:2416:CE5:O1A	2.55	0.53
1:A:96:TRP:CZ3	2:A:2416:CE5:C6A	2.83	0.53
1:D:49:ARG:NH2	1:D:51:ILE:HD11	2.23	0.53
1:D:253:MET:HE1	1:D:348:PHE:CZ	2.43	0.53
1:D:202:ARG:O	1:D:206:GLN:HG3	2.09	0.53
1:D:80:THR:HG23	1:D:84:LEU:HD12	1.90	0.53
1:C:225:GLU:OE1	1:C:228:LYS:CE	2.56	0.53
1:C:100:LYS:HB2	1:C:106:TRP:CH2	2.44	0.53
1:D:305:LEU:HB2	1:D:306:PRO:HD3	1.92	0.53
1:B:101:LYS:HD2	1:B:107:GLU:CG	2.40	0.52
1:C:32:LYS:HE3	1:C:33:LYS:HZ3	1.75	0.52
2:C:2416:CE5:C1E	2:C:2416:CE5:C6D	2.85	0.52
1:D:314:GLN:HE21	1:D:318:ARG:NH2	2.01	0.52
1:D:59:TYR:HD1	1:D:335:VAL:HG11	1.74	0.52
1:C:305:LEU:HB2	1:C:306:PRO:HD3	1.92	0.52
1:D:240:SER:CB	1:D:285:VAL:CG1	2.88	0.51
1:D:168:VAL:HG12	1:D:169:GLY:N	2.24	0.51
1:A:311[A]:ARG:NH2	3:A:396:HOH:O	2.28	0.51

Continued on next page...

Continued from previous page...

Atom-1	Atom-2	Interatomic distance (Å)	Clash overlap (Å)
1:C:103:ASN:CB	1:C:105:LYS:N	2.59	0.51
2:A:2416:CE5:H6D1	2:A:2416:CE5:C1E	2.32	0.51
1:C:33:LYS:N	1:C:33:LYS:CD	2.74	0.51
1:A:101:LYS:NZ	1:A:107:GLU:OE1	2.29	0.51
1:B:33:LYS:HB2	1:B:33:LYS:NZ	2.26	0.51
1:B:241:SER:OG	1:B:242:TYR:N	2.42	0.51
2:C:2416:CE5:H6A1	2:C:2416:CE5:O3A	2.12	0.50
1:A:311[A]:ARG:HE	1:B:314:GLN:HE22	1.59	0.50
1:B:96:TRP:CE2	2:B:2416:CE5:H5B	2.46	0.50
1:D:260:GLN:CG	1:D:263:ARG:HH21	2.13	0.50
1:D:331:TYR:CZ	1:D:335:VAL:HG21	2.46	0.50
1:C:216:GLY:HA3	1:C:270:PRO:HG2	1.92	0.50
1:A:41:ARG:NH1	1:A:52:THR:OG1	2.42	0.50
1:D:156:VAL:HG23	1:D:156:VAL:O	2.12	0.50
1:D:130:ARG:HD3	3:D:502:HOH:O	2.11	0.49
1:D:295:LYS:HE2	1:D:320:ARG:HH11	1.77	0.49
1:C:32:LYS:HG2	1:C:36:ILE:HD12	1.93	0.49
1:D:260:GLN:NE2	1:D:263:ARG:NH2	2.61	0.49
1:D:51:ILE:CG2	1:D:97:LEU:HD12	2.42	0.49
1:D:269:LYS:HB3	1:D:270:PRO:HD3	1.95	0.49
1:D:253:MET:HE3	1:D:343:TRP:HB2	1.95	0.49
1:D:51:ILE:HG21	1:D:97:LEU:HD12	1.94	0.49
1:D:41:ARG:HB3	1:D:79:TRP:CE2	2.48	0.49
1:C:150:ARG:HD2	3:C:397:HOH:O	2.13	0.49
1:B:53:THR:HA	1:B:96:TRP:O	2.12	0.48
1:B:206:GLN:OE1	1:B:260:GLN:HG2	2.13	0.48
3:A:476:HOH:O	1:B:311:ARG:HD2	2.13	0.48
1:C:68:ASN:HD21	1:C:132:TRP:HE1	1.61	0.48
1:C:33:LYS:N	1:C:33:LYS:HD2	2.28	0.48
1:C:345:GLN:O	1:D:319:GLN:HB2	2.14	0.48
1:C:53:THR:HA	1:C:96:TRP:O	2.14	0.48
1:C:345:GLN:HE22	1:C:347:ARG:HH21	1.58	0.48
1:D:37:SER:OG	1:D:41:ARG:HG2	2.13	0.48
1:D:174:ASN:HD22	1:D:174:ASN:N	2.11	0.47
1:B:116:ASP:HB3	1:B:182:TYR:CG	2.48	0.47
1:C:99:GLY:N	1:C:109:LEU:HD21	2.28	0.47
1:D:226:LYS:O	1:D:227:ASP:HB2	2.13	0.47
1:D:260:GLN:HG3	1:D:263:ARG:NH2	2.13	0.47
1:D:156:VAL:HG21	1:D:159:LEU:HD12	1.97	0.47
1:A:116:ASP:HB3	1:A:182:TYR:CG	2.50	0.47
1:D:219:PRO:CG	1:D:222:VAL:CG2	2.90	0.47

Continued on next page...

Continued from previous page...

Atom-1	Atom-2	Interatomic distance (Å)	Clash overlap (Å)
1:A:207:ARG:HD3	1:A:211:GLU:OE2	2.12	0.47
1:D:260:GLN:N	1:D:260:GLN:OE1	2.49	0.47
1:C:98:TRP:CH2	1:C:106:TRP:HB3	2.50	0.46
1:A:329:ASP:HB2	3:A:564:HOH:O	2.16	0.46
2:C:2416:CE5:H6D1	3:C:737:HOH:O	2.16	0.46
1:C:309:GLN:CA	1:D:311:ARG:NH1	2.75	0.46
1:C:47:ASP:O	1:C:50:LYS:HD2	2.15	0.46
1:B:100:LYS:HB2	1:B:106:TRP:CZ3	2.50	0.46
1:A:238:LEU:HG	1:A:287:VAL:HB	1.98	0.46
1:A:103:ASN:O	1:A:104:SER:CB	2.63	0.46
1:A:259:PRO:O	3:A:674:HOH:O	2.20	0.46
1:B:32:LYS:HG2	1:B:36:ILE:HD12	1.98	0.46
1:A:96:TRP:CE2	2:A:2416:CE5:H5B	2.51	0.45
1:D:156:VAL:HG21	1:D:162:MET:HG3	1.98	0.45
1:D:260:GLN:NE2	1:D:263:ARG:HH22	2.14	0.45
1:C:254:MET:SD	1:C:264:MET:CE	3.05	0.45
1:A:59:TYR:CD1	1:A:335:VAL:HG21	2.32	0.45
1:A:74:ASP:OD1	1:A:137:TYR:OH	2.23	0.45
1:A:32:LYS:HE2	3:A:456:HOH:O	2.14	0.45
1:D:51:ILE:HG22	1:D:52:THR:N	2.31	0.45
1:A:81:GLN:NE2	1:A:89:LEU:H	2.10	0.45
1:B:199:THR:HG21	3:B:685:HOH:O	2.17	0.45
2:A:2416:CE5:O6A	2:A:2416:CE5:O1A	1.91	0.45
1:D:33:LYS:HB2	1:D:33:LYS:NZ	2.32	0.45
1:D:206:GLN:OE1	1:D:260:GLN:HG2	2.18	0.44
1:D:165:PRO:HG2	1:D:170:PHE:CG	2.52	0.44
2:C:2416:CE5:H2E	2:C:2416:CE5:O6E	2.17	0.44
1:D:258:ASP:OD1	1:D:258:ASP:C	2.56	0.44
1:A:345:GLN:NE2	3:A:414:HOH:O	2.50	0.44
1:D:287:VAL:HG13	3:D:392:HOH:O	2.17	0.44
1:D:168:VAL:CG1	1:D:169:GLY:N	2.80	0.44
1:A:311[B]:ARG:NE	1:B:311:ARG:NH1	2.59	0.44
1:C:254:MET:SD	1:C:264:MET:HE3	2.58	0.44
2:C:2416:CE5:O4D	2:C:2416:CE5:C6E	2.65	0.44
1:B:101:LYS:HD2	1:B:107:GLU:HG3	1.98	0.44
1:C:32:LYS:HE3	1:C:33:LYS:NZ	2.32	0.44
1:A:311[A]:ARG:NE	1:B:314:GLN:NE2	2.66	0.44
1:B:253:MET:HG2	1:B:343:TRP:CD1	2.52	0.44
1:D:269:LYS:N	1:D:270:PRO:CD	2.80	0.43
1:C:346:HIS:HE1	3:D:614:HOH:O	2.01	0.43
2:C:2416:CE5:C1E	2:C:2416:CE5:H6D2	2.48	0.43

Continued on next page...

Continued from previous page...

Atom-1	Atom-2	Interatomic distance (Å)	Clash overlap (Å)
1:D:41:ARG:NH2	1:D:50:LYS:O	2.50	0.43
1:A:53:THR:HA	1:A:96:TRP:O	2.18	0.43
1:C:68:ASN:HB2	1:C:360:TRP:CD1	2.54	0.43
1:C:36:ILE:HG12	1:C:42:VAL:HG22	2.01	0.43
1:B:238:LEU:HG	1:B:287:VAL:HB	2.00	0.43
1:C:239:ILE:HA	1:C:287:VAL:HG23	2.00	0.43
1:D:136:ARG:O	1:D:140:ILE:HG13	2.19	0.43
1:B:217:PHE:CG	1:B:285:VAL:HG11	2.53	0.43
1:C:130:ARG:NH2	1:C:131:LEU:HD21	2.33	0.43
1:D:53:THR:HA	1:D:96:TRP:O	2.18	0.43
1:D:100:LYS:HD2	1:D:106:TRP:CZ2	2.54	0.43
1:C:219:PRO:HB3	1:C:287:VAL:HG21	2.00	0.42
1:C:116:ASP:HB3	1:C:182:TYR:CG	2.55	0.42
1:B:311:ARG:HD3	1:B:311:ARG:HA	1.83	0.42
1:B:103:ASN:O	1:B:104:SER:CB	2.68	0.42
1:A:207:ARG:HD2	1:A:211:GLU:CD	2.40	0.42
1:D:276:GLU:HG2	1:D:313:ALA:CB	2.50	0.42
1:C:304:MET:HE3	1:C:308:LEU:CD2	2.50	0.42
1:D:28:TRP:NE1	1:D:32:LYS:HD2	2.34	0.42
1:D:162:MET:SD	1:D:204:THR:HG21	2.60	0.41
1:A:24:THR:O	1:A:26:PRO:HD3	2.20	0.41
1:D:283:GLU:HG2	1:D:284:LYS:HG3	2.02	0.41
1:D:235:GLU:CD	1:D:237:THR:H	2.23	0.41
1:C:276:GLU:HG2	1:C:313:ALA:HB1	2.01	0.41
1:C:272:ALA:O	1:C:276:GLU:HG3	2.19	0.41
1:D:257:SER:HB2	1:D:352:THR:HG22	2.02	0.41
1:D:127:GLU:HA	1:D:127:GLU:OE2	2.21	0.41
1:A:197:PRO:HA	3:A:789:HOH:O	2.19	0.41
1:C:96:TRP:CE2	2:C:2416:CE5:H5B	2.56	0.41
1:D:331:TYR:O	1:D:335:VAL:HG23	2.20	0.41
1:C:304:MET:HE3	1:C:308:LEU:HD21	2.01	0.41
1:C:266:ASN:HB3	3:C:732:HOH:O	2.19	0.41
1:D:174:ASN:N	1:D:174:ASN:ND2	2.69	0.41
1:D:304:MET:CE	1:D:304:MET:CA	2.97	0.41
1:C:346:HIS:O	1:C:346:HIS:CD2	2.74	0.41
1:B:224:TYR:CE1	1:B:229:GLY:HA2	2.55	0.41
1:A:28:TRP:CE2	1:A:32:LYS:HD2	2.56	0.41
1:C:346:HIS:HD2	1:C:359:ASP:OD2	2.04	0.41
1:A:29:GLU:O	1:A:33:LYS:HG3	2.20	0.41
1:A:68:ASN:HB2	1:A:360:TRP:CD1	2.56	0.41
1:C:235:GLU:HG2	1:C:236:LYS:N	2.36	0.41

Continued on next page...

Continued from previous page...

Atom-1	Atom-2	Interatomic distance (Å)	Clash overlap (Å)
1:C:81:GLN:HG2	1:C:89:LEU:HG	2.03	0.41
2:C:2416:CE5:H6C2	2:C:2416:CE5:C1D	2.49	0.41
2:C:2416:CE5:O6A	2:C:2416:CE5:O1A	2.30	0.41
1:D:253:MET:HE2	1:D:348:PHE:CE1	2.52	0.40
1:C:304:MET:HE3	1:C:307:PHE:HD2	1.86	0.40
1:B:202:ARG:HH11	1:B:260:GLN:HE21	1.70	0.40
1:B:149:ALA:O	1:B:153:VAL:HB	2.21	0.40
1:A:59:TYR:CD1	1:A:335:VAL:HG22	2.56	0.40
1:A:345:GLN:NE2	1:A:347:ARG:HH21	2.19	0.40
1:D:98:TRP:CH2	1:D:106:TRP:HB3	2.55	0.40
1:D:38:GLN:HG3	3:D:762:HOH:O	2.22	0.40
1:B:299:GLY:H	1:B:333:ASN:ND2	2.19	0.40
1:B:281:PRO:HD3	1:B:317:GLN:NE2	2.36	0.40
1:B:219:PRO:HB3	1:B:287:VAL:HG21	2.03	0.40
1:B:41:ARG:HB3	1:B:79:TRP:CE2	2.57	0.40
1:B:31:PHE:HB2	1:B:334:TYR:CE2	2.56	0.40
1:D:61:MET:SD	1:D:121:MET:HG2	2.61	0.40

There are no symmetry-related clashes.

5.3 Torsion angles

5.3.1 Protein backbone

In the following table, the Percentiles column shows the percent Ramachandran outliers of the chain as a percentile score with respect to all X-ray entries followed by that with respect to entries of similar resolution.

The Analysed column shows the number of residues for which the backbone conformation was analysed, and the total number of residues.

Mol	Chain	Analysed	Favoured	Allowed	Outliers	Percentiles	
1	A	337/355 (95%)	329 (98%)	8 (2%)	0	100	100
1	B	336/355 (95%)	330 (98%)	6 (2%)	0	100	100
1	C	336/355 (95%)	329 (98%)	7 (2%)	0	100	100
1	D	336/355 (95%)	327 (97%)	6 (2%)	3 (1%)	21	19
All	All	1345/1420 (95%)	1315 (98%)	27 (2%)	3 (0%)	52	59

All (3) Ramachandran outliers are listed below:

Mol	Chain	Res	Type
1	D	234	ALA
1	D	86	GLN
1	D	235	GLU

5.3.2 Protein sidechains ⓘ

In the following table, the Percentiles column shows the percent sidechain outliers of the chain as a percentile score with respect to all X-ray entries followed by that with respect to entries of similar resolution.

The Analysed column shows the number of residues for which the sidechain conformation was analysed, and the total number of residues.

Mol	Chain	Analysed	Rotameric	Outliers	Percentiles	
1	A	284/297 (96%)	281 (99%)	3 (1%)	80	89
1	B	283/297 (95%)	281 (99%)	2 (1%)	88	94
1	C	283/297 (95%)	281 (99%)	2 (1%)	88	94
1	D	283/297 (95%)	281 (99%)	2 (1%)	88	94
All	All	1133/1188 (95%)	1124 (99%)	9 (1%)	86	93

All (9) residues with a non-rotameric sidechain are listed below:

Mol	Chain	Res	Type
1	A	125	LEU
1	A	335	VAL
1	A	338	LEU
1	B	23	CYS
1	B	199	THR
1	C	70	ARG
1	C	202	ARG
1	D	186	THR
1	D	204	THR

Some sidechains can be flipped to improve hydrogen bonding and reduce clashes. All (31) such sidechains are listed below:

Mol	Chain	Res	Type
1	A	75	ASN
1	A	81	GLN
1	A	82	ASN
1	A	317	GLN
1	A	345	GLN

Continued on next page...

Continued from previous page...

Mol	Chain	Res	Type
1	B	30	GLN
1	B	81	GLN
1	B	82	ASN
1	B	260	GLN
1	B	314	GLN
1	B	317	GLN
1	B	319	GLN
1	B	333	ASN
1	B	346	HIS
1	C	68	ASN
1	C	75	ASN
1	C	81	GLN
1	C	103	ASN
1	C	135	GLN
1	C	189	GLN
1	C	206	GLN
1	C	317	GLN
1	C	319	GLN
1	C	341	GLN
1	C	345	GLN
1	C	346	HIS
1	D	57	GLN
1	D	174	ASN
1	D	314	GLN
1	D	317	GLN
1	D	319	GLN

5.3.3 RNA ⓘ

There are no RNA molecules in this entry.

5.4 Non-standard residues in protein, DNA, RNA chains ⓘ

There are no non-standard protein/DNA/RNA residues in this entry.

5.5 Carbohydrates ⓘ

There are no carbohydrates in this entry.

5.6 Ligand geometry

4 ligands are modelled in this entry.

In the following table, the Counts columns list the number of bonds (or angles) for which Mogul statistics could be retrieved, the number of bonds (or angles) that are observed in the model and the number of bonds (or angles) that are defined in the chemical component dictionary. The Link column lists molecule types, if any, to which the group is linked. The Z score for a bond length (or angle) is the number of standard deviations the observed value is removed from the expected value. A bond length (or angle) with $|Z| > 2$ is considered an outlier worth inspection. RMSZ is the root-mean-square of all Z scores of the bond lengths (or angles).

Mol	Type	Chain	Res	Link	Bond lengths			Bond angles		
					Counts	RMSZ	$\# Z > 2$	Counts	RMSZ	$\# Z > 2$
2	CE5	A	2416	-	60,60,60	0.38	0	89,89,89	0.80	2 (2%)
2	CE5	B	2416	-	60,60,60	0.36	0	89,89,89	0.90	4 (4%)
2	CE5	C	2416	-	60,60,60	0.34	0	89,89,89	0.82	2 (2%)
2	CE5	D	2416	-	60,60,60	0.39	0	89,89,89	0.81	3 (3%)

In the following table, the Chirals column lists the number of chiral outliers, the number of chiral centers analysed, the number of these observed in the model and the number defined in the chemical component dictionary. Similar counts are reported in the Torsion and Rings columns. '-' means no outliers of that kind were identified.

Mol	Type	Chain	Res	Link	Chirals	Torsions	Rings
2	CE5	A	2416	-	-	0/26/126/126	0/5/5/5
2	CE5	B	2416	-	-	0/26/126/126	0/5/5/5
2	CE5	C	2416	-	-	0/26/126/126	0/5/5/5
2	CE5	D	2416	-	-	0/26/126/126	0/5/5/5

There are no bond length outliers.

All (11) bond angle outliers are listed below:

Mol	Chain	Res	Type	Atoms	Z	Observed(°)	Ideal(°)
2	D	2416	CE5	C1E-O4D-C4D	-2.90	110.43	118.01
2	D	2416	CE5	C1C-O4B-C4B	-2.37	111.82	118.01
2	C	2416	CE5	C1B-O4A-C4A	-2.30	112.01	118.01
2	B	2416	CE5	C1E-O4D-C4D	-2.26	112.10	118.01
2	B	2416	CE5	C1D-O4C-C4C	-2.09	112.53	118.01
2	C	2416	CE5	C1D-O4C-C4C	-2.06	112.63	118.01
2	D	2416	CE5	C1D-O4C-C4C	-2.01	112.76	118.01
2	B	2416	CE5	O5A-C5A-C4A	2.32	114.65	109.75
2	B	2416	CE5	C3A-C4A-C5A	2.38	116.22	110.84
2	A	2416	CE5	O5A-C5A-C4A	2.43	114.87	109.75

Continued on next page...

Continued from previous page...

Mol	Chain	Res	Type	Atoms	Z	Observed($^{\circ}$)	Ideal($^{\circ}$)
2	A	2416	CE5	C3A-C4A-C5A	2.51	116.51	110.84

There are no chirality outliers.

There are no torsion outliers.

There are no ring outliers.

4 monomers are involved in 39 short contacts:

Mol	Chain	Res	Type	Clashes	Symm-Clashes
2	A	2416	CE5	10	0
2	B	2416	CE5	5	0
2	C	2416	CE5	14	0
2	D	2416	CE5	10	0

5.7 Other polymers [i](#)

There are no such residues in this entry.

5.8 Polymer linkage issues [i](#)

There are no chain breaks in this entry.

6 Fit of model and data ⓘ

6.1 Protein, DNA and RNA chains ⓘ

In the following table, the column labelled ‘#RSRZ> 2’ contains the number (and percentage) of RSRZ outliers, followed by percent RSRZ outliers for the chain as percentile scores relative to all X-ray entries and entries of similar resolution. The OWAB column contains the minimum, median, 95th percentile and maximum values of the occupancy-weighted average B-factor per residue. The column labelled ‘Q< 0.9’ lists the number of (and percentage) of residues with an average occupancy less than 0.9.

Mol	Chain	Analysed	<RSRZ>	#RSRZ>2	OWAB(Å ²)	Q<0.9
1	A	338/355 (95%)	-0.11	5 (1%) 76 75	8, 12, 21, 30	0
1	B	338/355 (95%)	-0.09	6 (1%) 71 70	9, 12, 21, 32	0
1	C	338/355 (95%)	-0.22	6 (1%) 71 70	9, 12, 23, 31	0
1	D	338/355 (95%)	0.76	63 (18%) 2 1	10, 14, 24, 31	0
All	All	1352/1420 (95%)	0.08	80 (5%) 26 25	8, 12, 22, 32	0

All (80) RSRZ outliers are listed below:

Mol	Chain	Res	Type	RSRZ
1	D	171	ALA	6.2
1	D	158	GLY	5.5
1	D	157	PRO	5.1
1	D	154	VAL	5.1
1	D	174	ASN	5.1
1	D	224	TYR	5.0
1	D	176	TRP	4.7
1	D	227	ASP	4.6
1	D	226	LYS	4.6
1	D	156	VAL	4.4
1	C	103	ASN	4.1
1	D	46	SER	4.1
1	D	175	SER	4.0
1	D	48	ALA	3.9
1	D	222	VAL	3.9
1	C	173	ASP	3.8
1	D	155	THR	3.8
1	D	153	VAL	3.6
1	D	172	GLU	3.5
1	D	166	GLY	3.5
1	D	259	PRO	3.4

Continued on next page...

Continued from previous page...

Mol	Chain	Res	Type	RSRZ
1	D	173	ASP	3.4
1	D	170	PHE	3.4
1	D	102	GLU	3.3
1	D	228	LYS	3.3
1	D	257	SER	3.3
1	D	104	SER	3.3
1	D	229	GLY	3.3
1	D	159	LEU	3.2
1	D	101	LYS	3.1
1	D	232	LEU	3.1
1	C	329	ASP	3.1
1	D	162	MET	3.0
1	D	205	ASN	2.9
1	C	102	GLU	2.8
1	D	198	TRP	2.8
1	D	204	THR	2.8
1	D	225	GLU	2.8
1	D	209	LEU	2.7
1	C	23	CYS	2.7
1	D	103	ASN	2.7
1	D	161	SER	2.6
1	C	47	ASP	2.6
1	D	289	THR	2.6
1	D	106	TRP	2.6
1	D	47	ASP	2.6
1	D	234	ALA	2.6
1	D	168	VAL	2.6
1	D	196	ALA	2.5
1	A	303	ALA	2.5
1	B	343	TRP	2.5
1	D	149	ALA	2.5
1	D	105	LYS	2.5
1	A	302	ALA	2.4
1	D	217	PHE	2.4
1	D	100	LYS	2.4
1	D	160	GLY	2.4
1	D	164	LEU	2.4
1	D	178	PHE	2.4
1	D	311	ARG	2.4
1	D	169	GLY	2.3
1	D	214	PRO	2.3
1	D	163	LEU	2.3

Continued on next page...

Continued from previous page...

Mol	Chain	Res	Type	RSRZ
1	B	236	LYS	2.3
1	B	259	PRO	2.3
1	D	223	ARG	2.3
1	D	99	GLY	2.2
1	D	288	ALA	2.2
1	D	267	ARG	2.2
1	D	294	GLY	2.2
1	A	340	GLY	2.1
1	B	342	GLY	2.1
1	D	277	LYS	2.1
1	D	199	THR	2.1
1	D	266	ASN	2.1
1	D	201	LEU	2.1
1	A	342	GLY	2.1
1	B	102	GLU	2.1
1	A	343	TRP	2.1
1	B	348	PHE	2.0

6.2 Non-standard residues in protein, DNA, RNA chains [i](#)

There are no non-standard protein/DNA/RNA residues in this entry.

6.3 Carbohydrates [i](#)

There are no carbohydrates in this entry.

6.4 Ligands [i](#)

In the following table, the Atoms column lists the number of modelled atoms in the group and the number defined in the chemical component dictionary. LLDF column lists the quality of electron density of the group with respect to its neighbouring residues in protein, DNA or RNA chains. The B-factors column lists the minimum, median, 95th percentile and maximum values of B factors of atoms in the group. The column labelled 'Q< 0.9' lists the number of atoms with occupancy less than 0.9.

Mol	Type	Chain	Res	Atoms	RSCC	RSR	LLDF	B-factors(\AA^2)	Q<0.9
2	CE5	C	2416	56/56	0.81	0.21	3.37	31,43,49,53	11
2	CE5	B	2416	56/56	0.84	0.18	2.05	26,41,49,54	0
2	CE5	A	2416	56/56	0.83	0.19	1.63	30,40,50,55	0
2	CE5	D	2416	56/56	0.73	0.22	0.67	39,48,55,58	0

6.5 Other polymers [i](#)

There are no such residues in this entry.