



# wwPDB X-ray Structure Validation Summary Report ⓘ

Feb 1, 2016 – 12:22 PM GMT

PDB ID : 3R4D  
Title : Crystal structure of mouse coronavirus receptor-binding domain complexed with its murine receptor  
Authors : Peng, G.Q.; Sun, D.W.; Rajashankar, K.R.; Qian, Z.H.; Holmes, K.V.; Li, F.  
Deposited on : 2011-03-17  
Resolution : 3.10 Å(reported)

This is a wwPDB X-ray Structure Validation Summary Report for a publicly released PDB entry.  
We welcome your comments at [validation@mail.wwpdb.org](mailto:validation@mail.wwpdb.org)  
A user guide is available at  
<http://wwpdb.org/validation/2016/XrayValidationReportHelp>  
with specific help available everywhere you see the ⓘ symbol.

---

The following versions of software and data (see [references ⓘ](#)) were used in the production of this report:

MolProbity : 4.02b-467  
Mogul : 1.7 (RC4), CSD as536be (2015)  
Xtriage (Phenix) : 1.9-1692  
EDS : rb-20026688  
Percentile statistics : 20151230.v01 (using entries in the PDB archive December 30th 2015)  
Refmac : 5.8.0135  
CCP4 : 6.5.0  
Ideal geometry (proteins) : Engh & Huber (2001)  
Ideal geometry (DNA, RNA) : Parkinson et al. (1996)  
Validation Pipeline (wwPDB-VP) : trunk26865

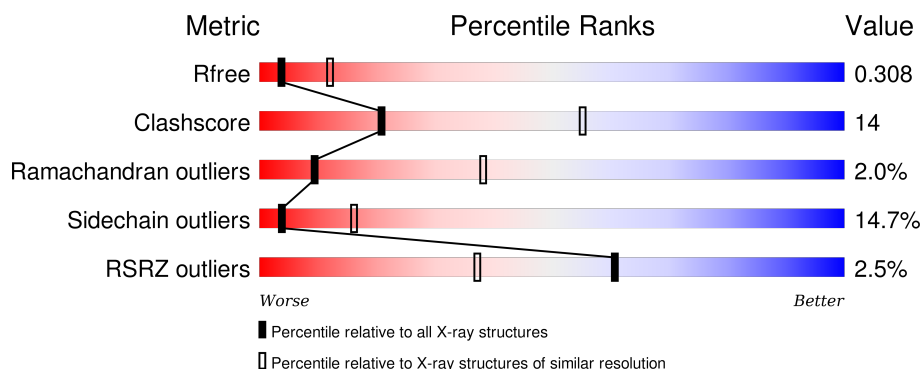
# 1 Overall quality at a glance

The following experimental techniques were used to determine the structure:

## *X-RAY DIFFRACTION*

The reported resolution of this entry is 3.10 Å.

Percentile scores (ranging between 0-100) for global validation metrics of the entry are shown in the following graphic. The table shows the number of entries on which the scores are based.



Metric	Whole archive (#Entries)	Similar resolution (#Entries, resolution range(Å))
$R_{free}$	91344	1114 (3.14-3.06)
Clashscore	102246	1222 (3.14-3.06)
Ramachandran outliers	100387	1174 (3.14-3.06)
Sidechain outliers	100360	1174 (3.14-3.06)
RSRZ outliers	91569	1119 (3.14-3.06)

The table below summarises the geometric issues observed across the polymeric chains and their fit to the electron density. The red, orange, yellow and green segments on the lower bar indicate the fraction of residues that contain outliers for  $\geq 3$ , 2, 1 and 0 types of geometric quality criteria. A grey segment represents the fraction of residues that are not modelled. The numeric value for each fraction is indicated below the corresponding segment, with a dot representing fractions  $\leq 5\%$ . The upper red bar (where present) indicates the fraction of residues that have poor fit to the electron density. The numeric value is given above the bar.

Mol	Chain	Length	Quality of chain
1	A	208	<div> <div>5%</div> <div>61% 27% 5% . .</div> </div>
1	C	208	<div> <div>3%</div> <div>49% 37% 9% . .</div> </div>
2	B	288	<div> <div>%</div> <div>58% 19% . 20%</div> </div>
2	D	288	<div> <div></div> <div>52% 24% . 20%</div> </div>

## 2 Entry composition

There are 5 unique types of molecules in this entry. The entry contains 6982 atoms, of which 0 are hydrogens and 0 are deuteriums.

In the tables below, the ZeroOcc column contains the number of atoms modelled with zero occupancy, the AltConf column contains the number of residues with at least one atom in alternate conformation and the Trace column contains the number of residues modelled with at most 2 atoms.

- Molecule 1 is a protein called CEA-related cell adhesion molecule 1, isoform 1/2S.

Mol	Chain	Residues	Atoms					ZeroOcc	AltConf	Trace
1	A	199	Total	C	N	O	S	0	0	0
			1577	990	272	307	8			
1	C	199	Total	C	N	O	S	0	0	0
			1577	990	272	307	8			

There are 12 discrepancies between the modelled and reference sequences:

Chain	Residue	Modelled	Actual	Comment	Reference
A	203	HIS	-	EXPRESSION TAG	UNP Q3LFS8
A	204	HIS	-	EXPRESSION TAG	UNP Q3LFS8
A	205	HIS	-	EXPRESSION TAG	UNP Q3LFS8
A	206	HIS	-	EXPRESSION TAG	UNP Q3LFS8
A	207	HIS	-	EXPRESSION TAG	UNP Q3LFS8
A	208	HIS	-	EXPRESSION TAG	UNP Q3LFS8
C	203	HIS	-	EXPRESSION TAG	UNP Q3LFS8
C	204	HIS	-	EXPRESSION TAG	UNP Q3LFS8
C	205	HIS	-	EXPRESSION TAG	UNP Q3LFS8
C	206	HIS	-	EXPRESSION TAG	UNP Q3LFS8
C	207	HIS	-	EXPRESSION TAG	UNP Q3LFS8
C	208	HIS	-	EXPRESSION TAG	UNP Q3LFS8

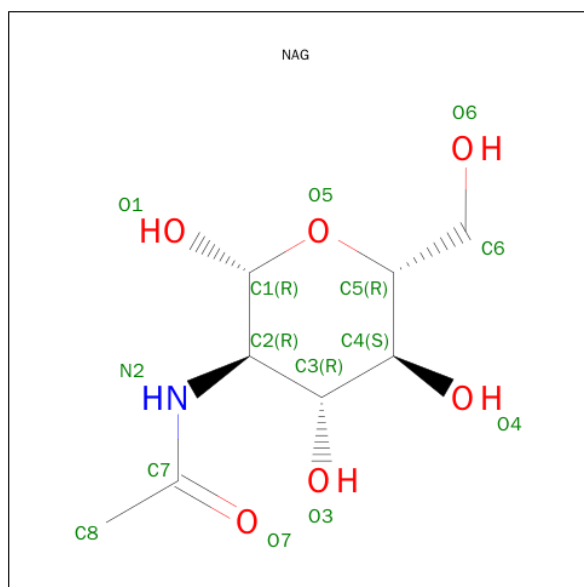
- Molecule 2 is a protein called Spike glycoprotein.

Mol	Chain	Residues	Atoms					ZeroOcc	AltConf	Trace
2	B	229	Total	C	N	O	S	0	0	0
			1810	1189	286	328	7			
2	D	229	Total	C	N	O	S	0	0	0
			1810	1189	286	328	7			

There are 12 discrepancies between the modelled and reference sequences:

Chain	Residue	Modelled	Actual	Comment	Reference
B	297	HIS	-	EXPRESSION TAG	UNP Q9J3E7
B	298	HIS	-	EXPRESSION TAG	UNP Q9J3E7
B	299	HIS	-	EXPRESSION TAG	UNP Q9J3E7
B	300	HIS	-	EXPRESSION TAG	UNP Q9J3E7
B	301	HIS	-	EXPRESSION TAG	UNP Q9J3E7
B	302	HIS	-	EXPRESSION TAG	UNP Q9J3E7
D	297	HIS	-	EXPRESSION TAG	UNP Q9J3E7
D	298	HIS	-	EXPRESSION TAG	UNP Q9J3E7
D	299	HIS	-	EXPRESSION TAG	UNP Q9J3E7
D	300	HIS	-	EXPRESSION TAG	UNP Q9J3E7
D	301	HIS	-	EXPRESSION TAG	UNP Q9J3E7
D	302	HIS	-	EXPRESSION TAG	UNP Q9J3E7

- Molecule 3 is SUGAR (N-ACETYL-D-GLUCOSAMINE) (three-letter code: NAG) (formula:  $C_8H_{15}NO_6$ ).



Mol	Chain	Residues	Atoms				ZeroOcc	AltConf
3	A	1	Total	C	N	O	0	0
			14	8	1	5		
3	A	1	Total	C	N	O	0	0
			14	8	1	5		
3	A	1	Total	C	N	O	0	0
			14	8	1	5		
3	A	1	Total	C	N	O	0	0
			14	8	1	5		
3	B	1	Total	C	N	O	0	0
			14	8	1	5		

*Continued on next page...*

*Continued from previous page...*

Mol	Chain	Residues	Atoms				ZeroOcc	AltConf
3	C	1	Total	C	N	O	0	0
			14	8	1	5		
3	C	1	Total	C	N	O	0	0
			14	8	1	5		
3	D	1	Total	C	N	O	0	0
			14	8	1	5		

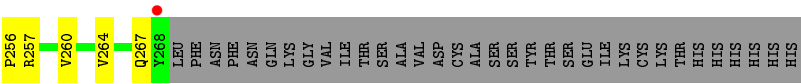
- Molecule 4 is a polymer of unknown type called SUGAR (2-MER).

Mol	Chain	Residues	Atoms				ZeroOcc	AltConf
4	C	2	Total	C	N	O	0	0
			28	16	2	10		

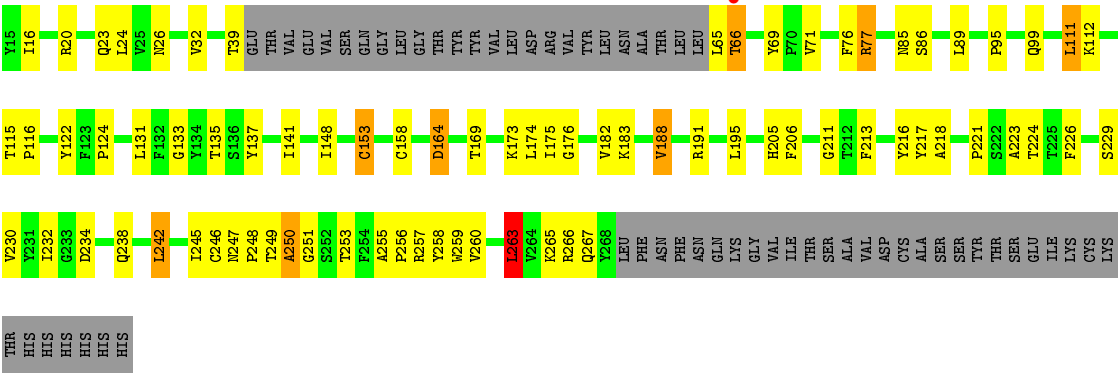
- Molecule 5 is water.

Mol	Chain	Residues	Atoms		ZeroOcc	AltConf
5	A	11	Total	O	0	0
			11	11		
5	B	17	Total	O	0	0
			17	17		
5	C	14	Total	O	0	0
			14	14		
5	D	26	Total	O	0	0
			26	26		





● Molecule 2: Spike glycoprotein



## 4 Data and refinement statistics

Property	Value	Source
Space group	P 61 2 2	Depositor
Cell constants a, b, c, $\alpha$ , $\beta$ , $\gamma$	76.38 Å 76.38 Å 942.09 Å 90.00° 90.00° 120.00°	Depositor
Resolution (Å)	30.00 – 3.10 39.25 – 3.00	Depositor EDS
% Data completeness (in resolution range)	99.2 (30.00-3.10) 92.8 (39.25-3.00)	Depositor EDS
$R_{merge}$	(Not available)	Depositor
$R_{sym}$	0.10	Depositor
$\langle I/\sigma(I) \rangle$ <sup>1</sup>	19.87 (at 3.01 Å)	Xtriage
Refinement program	REFMAC 5.5.0109	Depositor
R, $R_{free}$	0.248 , 0.308 0.246 , 0.308	Depositor DCC
$R_{free}$ test set	1572 reflections (5.42%)	DCC
Wilson B-factor (Å <sup>2</sup> )	35.8	Xtriage
Anisotropy	0.124	Xtriage
Bulk solvent $k_{sol}$ (e/Å <sup>3</sup> ), $B_{sol}$ (Å <sup>2</sup> )	0.31 , 51.2	EDS
Estimated twinning fraction	No twinning to report.	Xtriage
L-test for twinning <sup>2</sup>	$\langle  L  \rangle = 0.50$ , $\langle L^2 \rangle = 0.33$	Xtriage
Outliers	0 of 32646 reflections	Xtriage
$F_o, F_c$ correlation	0.85	EDS
Total number of atoms	6982	wwPDB-VP
Average B, all atoms (Å <sup>2</sup> )	67.0	wwPDB-VP

Xtriage's analysis on translational NCS is as follows: *The largest off-origin peak in the Patterson function is 4.03% of the height of the origin peak. No significant pseudotranslation is detected.*

<sup>1</sup>Intensities estimated from amplitudes.

<sup>2</sup>Theoretical values of  $\langle |L| \rangle$ ,  $\langle L^2 \rangle$  for acentric reflections are 0.5, 0.375 respectively for untwinned datasets, and 0.333, 0.2 for perfectly twinned datasets.



## 5 Model quality

### 5.1 Standard geometry

Bond lengths and bond angles in the following residue types are not validated in this section: NAG

The Z score for a bond length (or angle) is the number of standard deviations the observed value is removed from the expected value. A bond length (or angle) with  $|Z| > 5$  is considered an outlier worth inspection. RMSZ is the root-mean-square of all Z scores of the bond lengths (or angles).

Mol	Chain	Bond lengths		Bond angles	
		RMSZ	$\# Z  > 5$	RMSZ	$\# Z  > 5$
1	A	0.58	0/1604	0.74	0/2182
1	C	0.69	0/1604	0.84	4/2182 (0.2%)
2	B	0.66	0/1870	0.73	0/2560
2	D	0.71	1/1870 (0.1%)	0.79	2/2560 (0.1%)
All	All	0.66	1/6948 (0.0%)	0.77	6/9484 (0.1%)

Chiral center outliers are detected by calculating the chiral volume of a chiral center and verifying if the center is modelled as a planar moiety or with the opposite hand. A planarity outlier is detected by checking planarity of atoms in a peptide group, atoms in a mainchain group or atoms of a sidechain that are expected to be planar.

Mol	Chain	#Chirality outliers	#Planarity outliers
1	A	0	2
2	B	0	1
2	D	0	1
All	All	0	4

All (1) bond length outliers are listed below:

Mol	Chain	Res	Type	Atoms	Z	Observed(Å)	Ideal(Å)
2	D	153	CYS	CB-SG	-5.62	1.72	1.81

The worst 5 of 6 bond angle outliers are listed below:

Mol	Chain	Res	Type	Atoms	Z	Observed(°)	Ideal(°)
1	C	55	ASN	CB-CA-C	-8.61	93.17	110.40
2	D	263	LEU	CA-CB-CG	8.28	134.33	115.30
1	C	150	LEU	CA-CB-CG	7.25	131.98	115.30
2	D	164	ASP	CB-CG-OD1	-6.49	112.45	118.30
1	C	24	LEU	CA-CB-CG	6.32	129.84	115.30

There are no chirality outliers.

All (4) planarity outliers are listed below:

Mol	Chain	Res	Type	Group
1	A	97	ARG	Peptide
1	A	99	GLN	Peptide
2	B	15	TYR	Peptide
2	D	251	GLY	Peptide

## 5.2 Too-close contacts

In the following table, the Non-H and H(model) columns list the number of non-hydrogen atoms and hydrogen atoms in the chain respectively. The H(added) column lists the number of hydrogen atoms added and optimized by MolProbity. The Clashes column lists the number of clashes within the asymmetric unit, whereas Symm-Clashes lists symmetry related clashes.

Mol	Chain	Non-H	H(model)	H(added)	Clashes	Symm-Clashes
1	A	1577	0	1564	62	0
1	C	1577	0	1564	81	0
2	B	1810	0	1745	27	0
2	D	1810	0	1745	33	0
3	A	56	0	52	5	0
3	B	14	0	13	0	0
3	C	28	0	26	0	0
3	D	14	0	13	0	0
4	C	28	0	25	0	0
5	A	11	0	0	1	0
5	B	17	0	0	2	0
5	C	14	0	0	0	0
5	D	26	0	0	0	0
All	All	6982	0	6747	196	0

The all-atom clashscore is defined as the number of clashes found per 1000 atoms (including hydrogen atoms). The all-atom clashscore for this structure is 14.

The worst 5 of 196 close contacts within the same asymmetric unit are listed below, sorted by their clash magnitude.

Atom-1	Atom-2	Interatomic distance (Å)	Clash overlap (Å)
1:C:99:GLN:HA	1:C:100:ALA:HB2	1.31	1.11
1:C:99:GLN:HA	1:C:100:ALA:CB	1.80	1.09
2:B:132:PHE:HB3	2:B:157:ILE:HG21	1.36	1.01
1:C:98:THR:O	1:C:100:ALA:HB2	1.58	1.00

*Continued on next page...*

*Continued from previous page...*

Atom-1	Atom-2	Interatomic distance (Å)	Clash overlap (Å)
1:A:2:VAL:HG12	1:A:97:ARG:HH21	1.28	0.98

There are no symmetry-related clashes.

## 5.3 Torsion angles [i](#)

### 5.3.1 Protein backbone [i](#)

In the following table, the Percentiles column shows the percent Ramachandran outliers of the chain as a percentile score with respect to all X-ray entries followed by that with respect to entries of similar resolution.

The Analysed column shows the number of residues for which the backbone conformation was analysed, and the total number of residues.

Mol	Chain	Analysed	Favoured	Allowed	Outliers	Percentiles	
1	A	197/208 (95%)	175 (89%)	16 (8%)	6 (3%)	5	28
1	C	197/208 (95%)	174 (88%)	20 (10%)	3 (2%)	13	46
2	B	225/288 (78%)	200 (89%)	21 (9%)	4 (2%)	11	42
2	D	225/288 (78%)	204 (91%)	17 (8%)	4 (2%)	11	42
All	All	844/992 (85%)	753 (89%)	74 (9%)	17 (2%)	9	38

5 of 17 Ramachandran outliers are listed below:

Mol	Chain	Res	Type
1	A	99	GLN
2	B	16	ILE
2	B	72	ASP
1	C	100	ALA
1	C	147	SER

### 5.3.2 Protein sidechains [i](#)

In the following table, the Percentiles column shows the percent sidechain outliers of the chain as a percentile score with respect to all X-ray entries followed by that with respect to entries of similar resolution.

The Analysed column shows the number of residues for which the sidechain conformation was analysed, and the total number of residues.

Mol	Chain	Analysed	Rotameric	Outliers	Percentiles	
1	A	180/189 (95%)	154 (86%)	26 (14%)	4	17
1	C	180/189 (95%)	147 (82%)	33 (18%)	2	9
2	B	198/252 (79%)	174 (88%)	24 (12%)	6	24
2	D	198/252 (79%)	170 (86%)	28 (14%)	4	18
All	All	756/882 (86%)	645 (85%)	111 (15%)	4	16

5 of 111 residues with a non-rotameric sidechain are listed below:

Mol	Chain	Res	Type
1	C	2	VAL
1	C	102	VAL
2	D	191	ARG
1	C	4	ILE
1	C	45	ILE

Some sidechains can be flipped to improve hydrogen bonding and reduce clashes. 5 of 24 such sidechains are listed below:

Mol	Chain	Res	Type
2	B	196	ASN
1	C	22	HIS
2	D	247	ASN
2	B	238	GLN
1	C	15	ASN

### 5.3.3 RNA ⓘ

There are no RNA molecules in this entry.

## 5.4 Non-standard residues in protein, DNA, RNA chains ⓘ

There are no non-standard protein/DNA/RNA residues in this entry.

## 5.5 Carbohydrates ⓘ

2 carbohydrates are modelled in this entry.

In the following table, the Counts columns list the number of bonds (or angles) for which Mogul statistics could be retrieved, the number of bonds (or angles) that are observed in the model and the number of bonds (or angles) that are defined in the chemical component dictionary. The Link

column lists molecule types, if any, to which the group is linked. The Z score for a bond length (or angle) is the number of standard deviations the observed value is removed from the expected value. A bond length (or angle) with  $|Z| > 2$  is considered an outlier worth inspection. RMSZ is the root-mean-square of all Z scores of the bond lengths (or angles).

Mol	Type	Chain	Res	Link	Bond lengths			Bond angles		
					Counts	RMSZ	$\# Z  > 2$	Counts	RMSZ	$\# Z  > 2$
4	NAG	C	301	1,4	14,14,15	0.65	0	15,19,21	1.33	2 (13%)
4	NAG	C	302	4	14,14,15	0.44	0	15,19,21	0.80	1 (6%)

In the following table, the Chirals column lists the number of chiral outliers, the number of chiral centers analysed, the number of these observed in the model and the number defined in the chemical component dictionary. Similar counts are reported in the Torsion and Rings columns. '-' means no outliers of that kind were identified.

Mol	Type	Chain	Res	Link	Chirals	Torsions	Rings
4	NAG	C	301	1,4	-	0/6/23/26	0/1/1/1
4	NAG	C	302	4	-	0/6/23/26	0/1/1/1

There are no bond length outliers.

All (3) bond angle outliers are listed below:

Mol	Chain	Res	Type	Atoms	Z	Observed(°)	Ideal(°)
4	C	301	NAG	O3-C3-C2	-3.81	101.56	109.11
4	C	302	NAG	C1-O5-C5	2.06	114.86	112.25
4	C	301	NAG	O4-C4-C3	2.21	115.31	110.34

There are no chirality outliers.

There are no torsion outliers.

There are no ring outliers.

No monomer is involved in short contacts.

## 5.6 Ligand geometry

8 ligands are modelled in this entry.

In the following table, the Counts columns list the number of bonds (or angles) for which Mogul statistics could be retrieved, the number of bonds (or angles) that are observed in the model and the number of bonds (or angles) that are defined in the chemical component dictionary. The Link column lists molecule types, if any, to which the group is linked. The Z score for a bond length (or angle) is the number of standard deviations the observed value is removed from the expected

value. A bond length (or angle) with  $|Z| > 2$  is considered an outlier worth inspection. RMSZ is the root-mean-square of all Z scores of the bond lengths (or angles).

Mol	Type	Chain	Res	Link	Bond lengths			Bond angles		
					Counts	RMSZ	$\# Z  > 2$	Counts	RMSZ	$\# Z  > 2$
3	NAG	A	300	1	14,14,15	0.49	0	15,19,21	1.66	1 (6%)
3	NAG	A	301	1,3	14,14,15	0.56	0	15,19,21	2.48	5 (33%)
3	NAG	A	302	3	14,14,15	1.04	1 (7%)	15,19,21	2.56	3 (20%)
3	NAG	A	304	1	14,14,15	0.70	0	15,19,21	1.11	1 (6%)
3	NAG	B	303	2	14,14,15	0.51	0	15,19,21	1.68	1 (6%)
3	NAG	C	300	1	14,14,15	0.59	0	15,19,21	2.40	4 (26%)
3	NAG	C	304	1	14,14,15	0.58	0	15,19,21	1.20	1 (6%)
3	NAG	D	303	2	14,14,15	0.57	0	15,19,21	1.39	2 (13%)

In the following table, the Chirals column lists the number of chiral outliers, the number of chiral centers analysed, the number of these observed in the model and the number defined in the chemical component dictionary. Similar counts are reported in the Torsion and Rings columns. '-' means no outliers of that kind were identified.

Mol	Type	Chain	Res	Link	Chirals	Torsions	Rings
3	NAG	A	300	1	-	0/6/23/26	0/1/1/1
3	NAG	A	301	1,3	-	0/6/23/26	0/1/1/1
3	NAG	A	302	3	-	0/6/23/26	0/1/1/1
3	NAG	A	304	1	-	0/6/23/26	0/1/1/1
3	NAG	B	303	2	-	0/6/23/26	0/1/1/1
3	NAG	C	300	1	-	0/6/23/26	0/1/1/1
3	NAG	C	304	1	-	0/6/23/26	0/1/1/1
3	NAG	D	303	2	-	0/6/23/26	0/1/1/1

All (1) bond length outliers are listed below:

Mol	Chain	Res	Type	Atoms	Z	Observed(Å)	Ideal(Å)
3	A	302	NAG	O5-C1	-2.38	1.39	1.43

The worst 5 of 18 bond angle outliers are listed below:

Mol	Chain	Res	Type	Atoms	Z	Observed(°)	Ideal(°)
3	A	302	NAG	C1-O5-C5	-7.06	103.28	112.25
3	A	301	NAG	C4-C3-C2	-4.53	104.18	111.23
3	D	303	NAG	O3-C3-C2	-2.21	104.73	109.11
3	C	304	NAG	O7-C7-C8	-2.04	118.32	122.06
3	A	301	NAG	O3-C3-C2	2.34	113.74	109.11

There are no chirality outliers.

There are no torsion outliers.

There are no ring outliers.

2 monomers are involved in 5 short contacts:

Mol	Chain	Res	Type	Clashes	Symm-Clashes
3	A	301	NAG	4	0
3	A	302	NAG	4	0

## 5.7 Other polymers [i](#)

There are no such residues in this entry.

## 5.8 Polymer linkage issues [i](#)

There are no chain breaks in this entry.

## 6 Fit of model and data [i](#)

### 6.1 Protein, DNA and RNA chains [i](#)

In the following table, the column labelled ‘#RSRZ> 2’ contains the number (and percentage) of RSRZ outliers, followed by percent RSRZ outliers for the chain as percentile scores relative to all X-ray entries and entries of similar resolution. The OWAB column contains the minimum, median, 95<sup>th</sup> percentile and maximum values of the occupancy-weighted average B-factor per residue. The column labelled ‘Q< 0.9’ lists the number of (and percentage) of residues with an average occupancy less than 0.9.

Mol	Chain	Analysed	<RSRZ>	#RSRZ>2	OWAB(Å <sup>2</sup> )	Q<0.9
1	A	199/208 (95%)	0.27	11 (5%) 29 12	50, 72, 125, 156	0
1	C	199/208 (95%)	-0.09	7 (3%) 48 23	48, 71, 113, 149	0
2	B	229/288 (79%)	-0.29	2 (0%) 85 72	45, 61, 92, 133	0
2	D	229/288 (79%)	-0.43	1 (0%) 93 85	34, 51, 81, 107	0
All	All	856/992 (86%)	-0.15	21 (2%) 61 37	34, 63, 107, 156	0

The worst 5 of 21 RSRZ outliers are listed below:

Mol	Chain	Res	Type	RSRZ
1	C	122	VAL	4.4
1	A	124	GLU	3.8
1	A	125	LEU	3.7
1	A	123	LYS	3.5
1	A	169	PRO	3.4

### 6.2 Non-standard residues in protein, DNA, RNA chains [i](#)

There are no non-standard protein/DNA/RNA residues in this entry.

### 6.3 Carbohydrates [i](#)

In the following table, the Atoms column lists the number of modelled atoms in the group and the number defined in the chemical component dictionary. LLDF column lists the quality of electron density of the group with respect to its neighbouring residues in protein, DNA or RNA chains. The B-factors column lists the minimum, median, 95<sup>th</sup> percentile and maximum values of B factors of atoms in the group. The column labelled ‘Q< 0.9’ lists the number of atoms with occupancy less than 0.9.



Mol	Type	Chain	Res	Atoms	RSCC	RSR	LLDF	B-factors( $\text{\AA}^2$ )	Q<0.9
4	NAG	C	301	14/15	0.89	0.25	1.28	35,48,52,54	0
4	NAG	C	302	14/15	0.71	0.42	-	253,254,254,254	0

## 6.4 Ligands [i](#)

In the following table, the Atoms column lists the number of modelled atoms in the group and the number defined in the chemical component dictionary. LLDF column lists the quality of electron density of the group with respect to its neighbouring residues in protein, DNA or RNA chains. The B-factors column lists the minimum, median, 95<sup>th</sup> percentile and maximum values of B factors of atoms in the group. The column labelled 'Q< 0.9' lists the number of atoms with occupancy less than 0.9.

Mol	Type	Chain	Res	Atoms	RSCC	RSR	LLDF	B-factors( $\text{\AA}^2$ )	Q<0.9
3	NAG	A	304	14/15	0.86	0.34	1.66	45,61,65,67	0
3	NAG	B	303	14/15	0.90	0.23	0.90	33,49,53,59	0
3	NAG	D	303	14/15	0.92	0.20	0.59	29,43,59,62	0
3	NAG	A	301	14/15	0.89	0.23	0.26	33,49,53,54	0
3	NAG	C	304	14/15	0.92	0.16	-0.81	33,49,53,53	0
3	NAG	C	300	14/15	0.73	0.43	-	53,71,75,75	0
3	NAG	A	300	14/15	0.82	0.31	-	48,65,72,72	0
3	NAG	A	302	14/15	0.56	0.47	-	258,258,258,258	0

## 6.5 Other polymers [i](#)

There are no such residues in this entry.