



# Full wwPDB X-ray Structure Validation Report ⓘ

Feb 1, 2016 – 05:32 AM GMT

PDB ID : 2R5E  
Title : Aedes kynurenine aminotransferase in complex with glutamine  
Authors : Han, Q.; Gao, Y.G.; Robinson, H.; Li, J.  
Deposited on : 2007-09-03  
Resolution : 1.84 Å(reported)

This is a Full wwPDB X-ray Structure Validation Report for a publicly released PDB entry.  
We welcome your comments at [validation@mail.wwpdb.org](mailto:validation@mail.wwpdb.org)  
A user guide is available at  
<http://wwpdb.org/validation/2016/XrayValidationReportHelp>  
with specific help available everywhere you see the ⓘ symbol.

---

The following versions of software and data (see [references ⓘ](#)) were used in the production of this report:

MolProbity : 4.02b-467  
Mogul : 1.7 (RC4), CSD as536be (2015)  
Xtriage (Phenix) : 1.9-1692  
EDS : rb-20026688  
Percentile statistics : 20151230.v01 (using entries in the PDB archive December 30th 2015)  
Refmac : 5.8.0135  
CCP4 : 6.5.0  
Ideal geometry (proteins) : Engh & Huber (2001)  
Ideal geometry (DNA, RNA) : Parkinson et al. (1996)  
Validation Pipeline (wwPDB-VP) : trunk26865

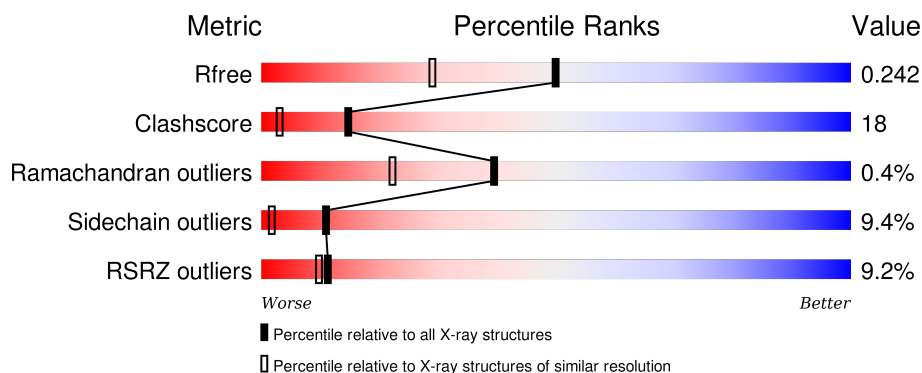
# 1 Overall quality at a glance

The following experimental techniques were used to determine the structure:

## *X-RAY DIFFRACTION*

The reported resolution of this entry is 1.84 Å.

Percentile scores (ranging between 0-100) for global validation metrics of the entry are shown in the following graphic. The table shows the number of entries on which the scores are based.



Metric	Whole archive (#Entries)	Similar resolution (#Entries, resolution range(Å))
$R_{free}$	91344	2634 (1.86-1.82)
Clashscore	102246	2862 (1.86-1.82)
Ramachandran outliers	100387	2831 (1.86-1.82)
Sidechain outliers	100360	2832 (1.86-1.82)
RSRZ outliers	91569	2639 (1.86-1.82)

The table below summarises the geometric issues observed across the polymeric chains and their fit to the electron density. The red, orange, yellow and green segments on the lower bar indicate the fraction of residues that contain outliers for  $\geq 3$ , 2, 1 and 0 types of geometric quality criteria. A grey segment represents the fraction of residues that are not modelled. The numeric value for each fraction is indicated below the corresponding segment, with a dot representing fractions  $\leq 5\%$ . The upper red bar (where present) indicates the fraction of residues that have poor fit to the electron density. The numeric value is given above the bar.

Mol	Chain	Length	Quality of chain
1	A	429	<div> <div>14%</div> <div>66%</div> <div>25%</div> <div>6% ..</div> </div>
1	B	429	<div> <div>3%</div> <div>72%</div> <div>21%</div> <div>..</div> </div>

## 2 Entry composition [i](#)

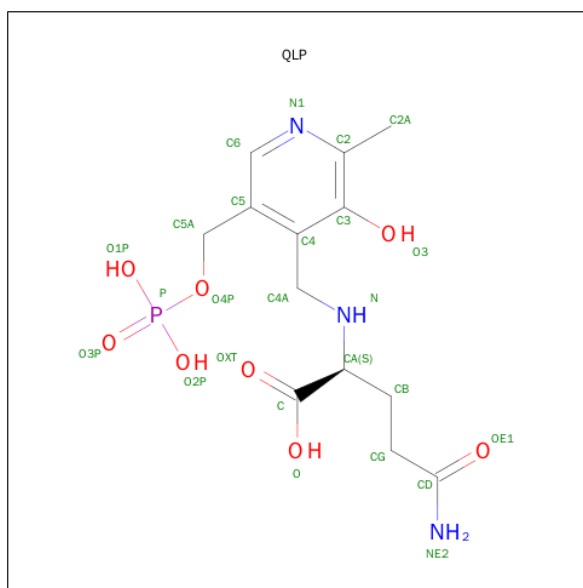
There are 3 unique types of molecules in this entry. The entry contains 7280 atoms, of which 0 are hydrogens and 0 are deuteriums.

In the tables below, the ZeroOcc column contains the number of atoms modelled with zero occupancy, the AltConf column contains the number of residues with at least one atom in alternate conformation and the Trace column contains the number of residues modelled with at most 2 atoms.

- Molecule 1 is a protein called Kynurenine aminotransferase.

Mol	Chain	Residues	Atoms					ZeroOcc	AltConf	Trace
1	A	419	Total	C	N	O	S	0	0	0
			3323	2137	551	615	20			
1	B	419	Total	C	N	O	S	0	0	0
			3323	2137	551	615	20			

- Molecule 2 is N 2 -({3-HYDROXY-2-METHYL-5-[(PHOSPHONOOXY)METHYL]PYRIDIN-4-YL}METHYL)-L-GLUTAMINE (three-letter code: QLP) (formula: C<sub>13</sub>H<sub>20</sub>N<sub>3</sub>O<sub>8</sub>P).

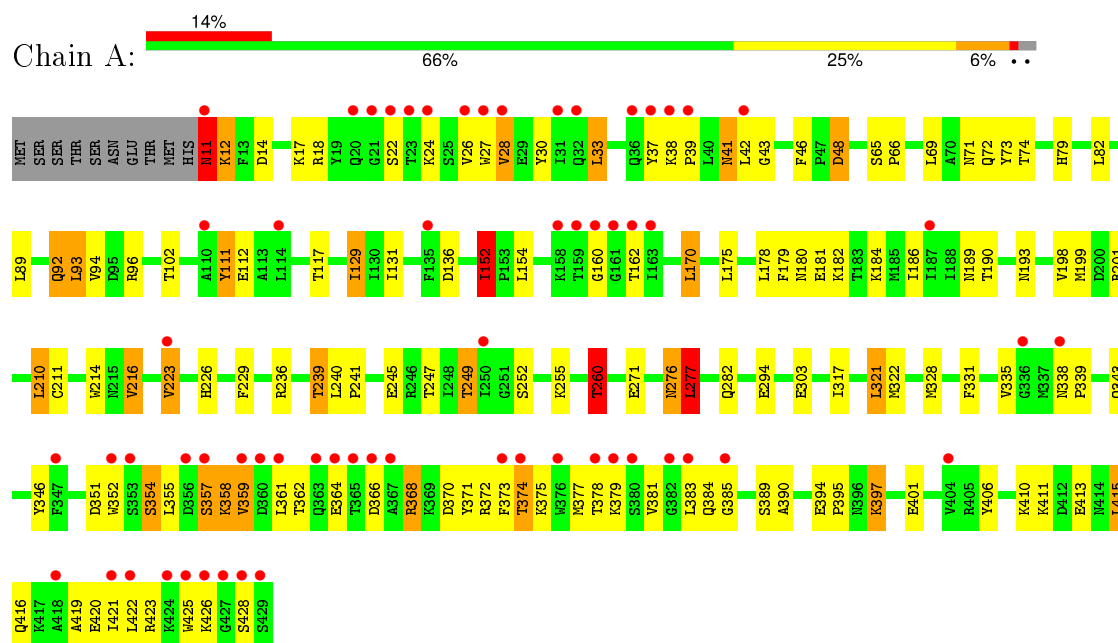


Mol	Chain	Residues	Atoms		ZeroOcc	AltConf
3	A	291	Total 291	O 291	0	0
3	B	293	Total 293	O 293	0	0

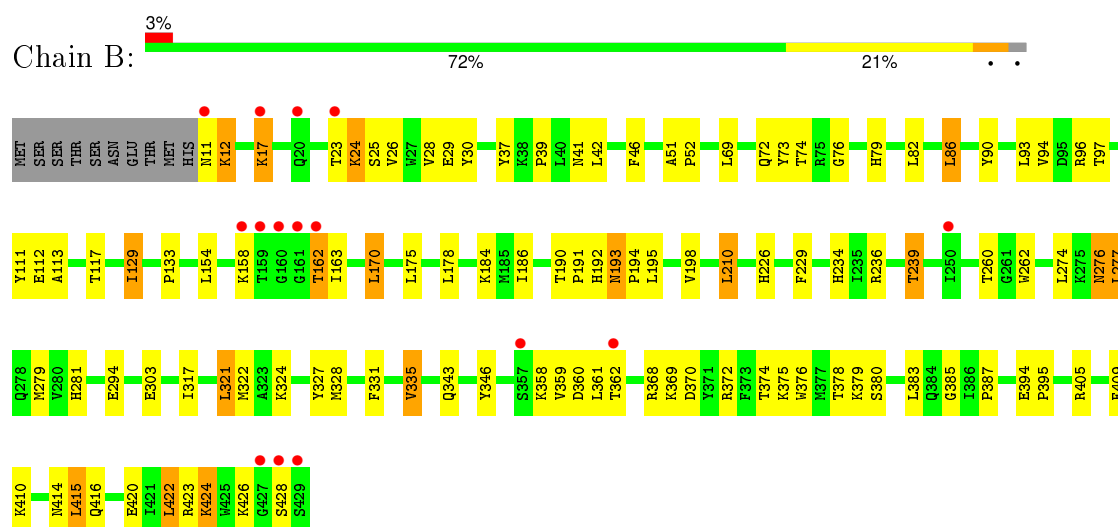
### 3 Residue-property plots [i](#)

These plots are drawn for all protein, RNA and DNA chains in the entry. The first graphic for a chain summarises the proportions of errors displayed in the second graphic. The second graphic shows the sequence view annotated by issues in geometry and electron density. Residues are color-coded according to the number of geometric quality criteria for which they contain at least one outlier: green = 0, yellow = 1, orange = 2 and red = 3 or more. A red dot above a residue indicates a poor fit to the electron density ( $RSRZ > 2$ ). Stretches of 2 or more consecutive residues without any outlier are shown as a green connector. Residues present in the sample, but not in the model, are shown in grey.

#### • Molecule 1: Kynurenine aminotransferase



#### • Molecule 1: Kynurenine aminotransferase



## 4 Data and refinement statistics

Property	Value	Source
Space group	P 21 21 21	Depositor
Cell constants a, b, c, $\alpha$ , $\beta$ , $\gamma$	56.37Å 95.59Å 165.90Å 90.00° 90.00° 90.00°	Depositor
Resolution (Å)	29.75 – 1.84 29.74 – 1.84	Depositor EDS
% Data completeness (in resolution range)	90.2 (29.75-1.84) 90.2 (29.74-1.84)	Depositor EDS
$R_{merge}$	0.08	Depositor
$R_{sym}$	(Not available)	Depositor
$\langle I/\sigma(I) \rangle$ <sup>1</sup>	2.95 (at 1.84Å)	Xtriage
Refinement program	REFMAC 5.2.0005	Depositor
R, $R_{free}$	0.201 , 0.243 0.200 , 0.242	Depositor DCC
$R_{free}$ test set	3546 reflections (5.28%)	DCC
Wilson B-factor (Å <sup>2</sup> )	29.3	Xtriage
Anisotropy	0.075	Xtriage
Bulk solvent $k_{sol}$ (e/Å <sup>3</sup> ), $B_{sol}$ (Å <sup>2</sup> )	0.34 , 49.7	EDS
Estimated twinning fraction	No twinning to report.	Xtriage
L-test for twinning <sup>2</sup>	$\langle  L  \rangle = 0.47$ , $\langle L^2 \rangle = 0.30$	Xtriage
Outliers	0 of 70656 reflections	Xtriage
$F_o, F_c$ correlation	0.95	EDS
Total number of atoms	7280	wwPDB-VP
Average B, all atoms (Å <sup>2</sup> )	32.0	wwPDB-VP

Xtriage's analysis on translational NCS is as follows: *The largest off-origin peak in the Patterson function is 3.85% of the height of the origin peak. No significant pseudotranslation is detected.*

<sup>1</sup>Intensities estimated from amplitudes.

<sup>2</sup>Theoretical values of  $\langle |L| \rangle$ ,  $\langle L^2 \rangle$  for acentric reflections are 0.5, 0.375 respectively for untwinned datasets, and 0.333, 0.2 for perfectly twinned datasets.

## 5 Model quality [i](#)

### 5.1 Standard geometry [i](#)

Bond lengths and bond angles in the following residue types are not validated in this section: QLP

The Z score for a bond length (or angle) is the number of standard deviations the observed value is removed from the expected value. A bond length (or angle) with  $|Z| > 5$  is considered an outlier worth inspection. RMSZ is the root-mean-square of all Z scores of the bond lengths (or angles).

Mol	Chain	Bond lengths		Bond angles	
		RMSZ	$\# Z  > 5$	RMSZ	$\# Z  > 5$
1	A	0.77	1/3411 (0.0%)	0.82	4/4629 (0.1%)
1	B	0.80	0/3411	0.81	3/4629 (0.1%)
All	All	0.79	1/6822 (0.0%)	0.82	7/9258 (0.1%)

Chiral center outliers are detected by calculating the chiral volume of a chiral center and verifying if the center is modelled as a planar moiety or with the opposite hand. A planarity outlier is detected by checking planarity of atoms in a peptide group, atoms in a mainchain group or atoms of a sidechain that are expected to be planar.

Mol	Chain	#Chirality outliers	#Planarity outliers
1	A	0	1
1	B	1	0
All	All	1	1

All (1) bond length outliers are listed below:

Mol	Chain	Res	Type	Atoms	Z	Observed(Å)	Ideal(Å)
1	A	111	TYR	CD2-CE2	-5.00	1.31	1.39

All (7) bond angle outliers are listed below:

Mol	Chain	Res	Type	Atoms	Z	Observed(°)	Ideal(°)
1	A	277	LEU	CA-CB-CG	5.81	128.67	115.30
1	A	48	ASP	CB-CG-OD1	-5.45	113.39	118.30
1	B	277	LEU	CB-CG-CD2	5.36	120.11	111.00
1	B	86	LEU	CA-CB-CG	5.35	127.61	115.30
1	B	210	LEU	CA-CB-CG	5.33	127.55	115.30
1	A	260	THR	CA-CB-CG2	5.25	119.76	112.40
1	A	152	ILE	CB-CA-C	-5.22	101.16	111.60

All (1) chirality outliers are listed below:

Mol	Chain	Res	Type	Atom
1	B	260	THR	CB

All (1) planarity outliers are listed below:

Mol	Chain	Res	Type	Group
1	A	11	ASN	Peptide

## 5.2 Too-close contacts

In the following table, the Non-H and H(model) columns list the number of non-hydrogen atoms and hydrogen atoms in the chain respectively. The H(added) column lists the number of hydrogen atoms added and optimized by MolProbity. The Clashes column lists the number of clashes within the asymmetric unit, whereas Symm-Clashes lists symmetry related clashes.

Mol	Chain	Non-H	H(model)	H(added)	Clashes	Symm-Clashes
1	A	3323	0	3278	158	0
1	B	3323	0	3278	96	0
2	A	25	0	16	1	0
2	B	25	0	16	1	0
3	A	291	0	0	51	0
3	B	293	0	0	19	0
All	All	7280	0	6588	237	0

The all-atom clashscore is defined as the number of clashes found per 1000 atoms (including hydrogen atoms). The all-atom clashscore for this structure is 18.

All (237) close contacts within the same asymmetric unit are listed below, sorted by their clash magnitude.

Atom-1	Atom-2	Interatomic distance (Å)	Clash overlap (Å)
1:A:41:ASN:HA	3:A:705:HOH:O	1.48	1.09
1:A:423:ARG:HG2	1:A:428:SER:HB2	1.37	1.05
1:A:72:GLN:OE1	1:B:260:THR:HG22	1.59	1.02
1:A:373:PHE:HA	3:A:696:HOH:O	1.58	1.00
1:A:92:GLN:HG2	3:A:647:HOH:O	1.61	0.99
1:B:322:MET:HE3	3:B:917:HOH:O	1.64	0.97
1:A:379:LYS:HG3	3:A:698:HOH:O	1.64	0.96
1:A:421:ILE:HG21	3:A:710:HOH:O	1.66	0.95
1:A:385:GLY:HA3	3:A:708:HOH:O	1.66	0.94
1:A:364:GLU:HG2	3:A:660:HOH:O	1.69	0.91

*Continued on next page...*



*Continued from previous page...*

Atom-1	Atom-2	Interatomic distance (Å)	Clash overlap (Å)
1:A:378:THR:OG1	1:A:384:GLN:HB2	1.71	0.89
1:A:201:ARG:HD2	3:A:715:HOH:O	1.72	0.89
1:A:39:PRO:HA	3:A:668:HOH:O	1.72	0.86
1:A:129:ILE:CD1	1:A:152:ILE:HD11	2.05	0.85
1:B:229:PHE:HB3	1:B:322:MET:HE1	1.57	0.85
1:A:420:GLU:HA	3:A:716:HOH:O	1.76	0.83
1:B:112:GLU:OE2	1:B:281:HIS:HD2	1.62	0.83
1:A:359:VAL:HA	3:A:648:HOH:O	1.78	0.83
1:A:71:ASN:HD22	1:B:262:TRP:HE1	1.24	0.82
1:A:22:SER:HB3	3:A:649:HOH:O	1.78	0.82
1:A:371:TYR:O	1:A:375:LYS:HG3	1.81	0.81
3:A:649:HOH:O	1:B:279:MET:SD	2.37	0.80
1:A:73:TYR:H	1:B:260:THR:HG23	1.45	0.79
1:B:322:MET:CE	3:B:917:HOH:O	2.25	0.79
1:A:249:THR:HG23	3:A:494:HOH:O	1.83	0.78
1:A:223:VAL:HG13	1:A:255:LYS:HG3	1.66	0.78
1:A:423:ARG:CG	1:A:428:SER:HB2	2.14	0.78
1:B:113:ALA:O	1:B:117:THR:HG23	1.85	0.77
1:A:362:THR:HB	3:A:699:HOH:O	1.84	0.77
1:A:152:ILE:HG12	1:A:178:LEU:CD2	2.15	0.76
1:A:383:LEU:HB2	3:A:710:HOH:O	1.85	0.75
1:A:152:ILE:HG12	1:A:178:LEU:HD22	1.67	0.75
1:A:357:SER:HB2	1:A:358:LYS:HD3	1.66	0.75
1:A:260:THR:CG2	1:B:73:TYR:H	2.00	0.75
1:A:73:TYR:N	1:B:260:THR:HG23	2.02	0.75
1:B:424:LYS:O	1:B:428:SER:HB2	1.88	0.73
1:A:79:HIS:HE1	1:A:294:GLU:OE1	1.72	0.73
1:A:129:ILE:HD13	1:A:152:ILE:HD11	1.69	0.73
1:A:236:ARG:O	1:A:239:THR:HG22	1.89	0.72
1:A:385:GLY:CA	3:A:708:HOH:O	2.30	0.72
1:A:11:ASN:HD22	1:A:11:ASN:N	1.86	0.72
1:B:79:HIS:HE1	1:B:294:GLU:OE2	1.73	0.71
1:B:226:HIS:HD2	3:B:856:HOH:O	1.73	0.71
1:A:30:TYR:HE1	1:A:374:THR:HG1	1.36	0.71
1:A:42:LEU:HD22	1:A:383:LEU:HD11	1.72	0.70
1:A:30:TYR:HE1	1:A:374:THR:OG1	1.74	0.70
1:A:370:ASP:O	1:A:374:THR:HG22	1.92	0.70
1:B:158:LYS:HE3	1:B:163:ILE:HG22	1.74	0.70
1:A:30:TYR:OH	1:A:374:THR:CG2	2.39	0.69
3:A:649:HOH:O	1:B:279:MET:HB3	1.91	0.69
1:A:30:TYR:OH	1:A:374:THR:HG21	1.92	0.68

*Continued on next page...*

*Continued from previous page...*

Atom-1	Atom-2	Interatomic distance (Å)	Clash overlap (Å)
1:B:420:GLU:OE2	1:B:423:ARG:NH2	2.25	0.68
1:B:335:VAL:HG21	1:B:422:LEU:HB3	1.73	0.68
1:A:423:ARG:HB2	3:A:716:HOH:O	1.94	0.68
1:A:102:THR:HB	1:A:271:GLU:HG3	1.76	0.67
1:A:385:GLY:N	3:A:721:HOH:O	2.28	0.67
1:A:18:ARG:HG3	3:B:881:HOH:O	1.93	0.67
1:B:117:THR:HA	1:B:277:LEU:HD22	1.76	0.67
1:A:71:ASN:ND2	1:B:262:TRP:HE1	1.94	0.66
1:A:368:ARG:HD3	1:A:397:LYS:HD3	1.78	0.66
1:B:193:ASN:HD21	1:B:405:ARG:HH11	1.43	0.65
1:B:360:ASP:OD1	1:B:362:THR:HB	1.96	0.65
1:B:229:PHE:HB3	1:B:322:MET:CE	2.24	0.65
1:A:249:THR:CG2	3:A:494:HOH:O	2.44	0.65
1:A:410:LYS:HB2	1:A:415:LEU:HD13	1.78	0.65
1:A:239:THR:HG23	3:A:589:HOH:O	1.95	0.65
1:A:361:LEU:HA	3:A:660:HOH:O	1.96	0.65
1:B:193:ASN:HD22	1:B:194:PRO:HA	1.61	0.64
1:A:162:THR:HG22	1:A:339:PRO:HG2	1.79	0.64
1:B:359:VAL:HG12	1:B:376:TRP:CZ3	2.33	0.64
1:B:117:THR:HG22	1:B:277:LEU:HD11	1.80	0.64
1:B:239:THR:HG23	3:B:882:HOH:O	1.98	0.63
1:A:413:GLU:HG2	3:A:624:HOH:O	1.98	0.63
1:A:190:THR:HG22	3:A:546:HOH:O	1.97	0.63
1:B:117:THR:HG22	1:B:277:LEU:CD1	2.30	0.62
1:A:260:THR:HG22	1:B:72:GLN:HA	1.81	0.61
1:A:423:ARG:HG2	1:A:428:SER:CB	2.21	0.61
1:B:112:GLU:OE2	1:B:281:HIS:CD2	2.50	0.61
1:B:226:HIS:HE1	3:B:715:HOH:O	1.85	0.60
1:A:162:THR:HG22	1:A:339:PRO:HD2	1.84	0.60
1:B:236:ARG:O	1:B:239:THR:HB	2.00	0.60
1:A:260:THR:HG23	1:B:73:TYR:H	1.65	0.60
1:A:229:PHE:HB3	1:A:322:MET:CE	2.32	0.60
1:A:240:LEU:HB3	1:A:241:PRO:HD2	1.82	0.59
1:A:198:VAL:HG13	1:A:343:GLN:CB	2.32	0.59
1:A:117:THR:HA	1:A:277:LEU:HD22	1.83	0.59
1:B:17:LYS:HB3	1:B:17:LYS:NZ	2.17	0.59
1:B:374:THR:HG21	1:B:387:PRO:HD3	1.84	0.59
1:A:38:LYS:HB3	1:A:38:LYS:NZ	2.18	0.59
1:A:190:THR:CG2	1:A:199:MET:H	2.16	0.59
1:A:184:LYS:HA	1:B:11:ASN:HD21	1.68	0.59
1:A:42:LEU:N	3:A:705:HOH:O	2.36	0.58

*Continued on next page...*

*Continued from previous page...*

Atom-1	Atom-2	Interatomic distance (Å)	Clash overlap (Å)
1:A:226:HIS:HD2	3:A:631:HOH:O	1.85	0.58
1:A:411:LYS:HE3	3:A:673:HOH:O	2.04	0.58
1:B:74:THR:OG1	1:B:79:HIS:HD2	1.87	0.57
1:A:377:MET:HA	1:A:381:VAL:HG12	1.86	0.57
1:A:190:THR:HG21	1:A:199:MET:H	1.70	0.56
1:A:229:PHE:HB3	1:A:322:MET:HE2	1.86	0.56
1:A:384:GLN:C	3:A:721:HOH:O	2.43	0.56
1:B:12:LYS:HD3	3:B:791:HOH:O	2.05	0.56
1:A:198:VAL:HG13	1:A:343:GLN:HB3	1.87	0.56
1:A:381:VAL:HG22	3:A:682:HOH:O	2.05	0.56
1:B:193:ASN:HD22	1:B:194:PRO:CA	2.19	0.56
1:A:184:LYS:HA	1:B:11:ASN:ND2	2.21	0.56
1:A:260:THR:HB	1:B:72:GLN:OE1	2.06	0.55
1:A:12:LYS:HA	1:A:12:LYS:HE3	1.88	0.55
1:B:370:ASP:O	1:B:374:THR:HG22	2.07	0.55
1:B:12:LYS:HG2	3:B:791:HOH:O	2.06	0.55
1:A:383:LEU:CB	3:A:710:HOH:O	2.50	0.54
1:A:226:HIS:HE1	3:A:510:HOH:O	1.89	0.54
1:B:162:THR:HG21	3:B:775:HOH:O	2.05	0.54
1:A:30:TYR:OH	1:A:374:THR:HG23	2.08	0.54
1:B:420:GLU:OE2	1:B:423:ARG:NE	2.41	0.54
1:B:192:HIS:HD2	1:B:195:LEU:H	1.56	0.53
1:B:30:TYR:OH	1:B:374:THR:HG23	2.09	0.53
1:B:129:ILE:HG13	1:B:186:ILE:HG13	1.91	0.52
1:A:94:VAL:HG23	1:A:96:ARG:HG2	1.92	0.52
1:A:48:ASP:HB2	1:A:410:LYS:HA	1.92	0.52
1:A:366:ASP:OD2	1:A:372:ARG:HG2	2.10	0.52
1:A:379:LYS:CG	3:A:698:HOH:O	2.35	0.52
1:B:414:ASN:ND2	3:B:894:HOH:O	2.43	0.52
1:A:26:VAL:HG21	1:A:390:ALA:HB1	1.92	0.52
1:B:234:HIS:HD2	3:B:853:HOH:O	1.93	0.51
1:B:303:GLU:OE1	1:B:303:GLU:HA	2.11	0.51
1:A:373:PHE:HD2	3:A:679:HOH:O	1.93	0.51
1:A:73:TYR:H	1:B:260:THR:CG2	2.17	0.51
1:A:378:THR:CG2	3:A:629:HOH:O	2.58	0.51
3:A:649:HOH:O	1:B:279:MET:CB	2.55	0.51
1:A:28:VAL:HB	3:B:874:HOH:O	2.10	0.51
1:A:260:THR:HG23	1:B:73:TYR:CG	2.45	0.51
1:B:29:GLU:OE2	1:B:375:LYS:NZ	2.42	0.51
1:A:328:MET:HA	1:A:331:PHE:CE2	2.45	0.51
1:A:27:TRP:NE1	1:A:136:ASP:OD2	2.39	0.51

*Continued on next page...*

*Continued from previous page...*

Atom-1	Atom-2	Interatomic distance (Å)	Clash overlap (Å)
1:A:255:LYS:CE	2:A:430:QLP:H4A1	2.40	0.50
1:B:276:ASN:HD22	1:B:276:ASN:N	2.09	0.50
1:A:361:LEU:HD23	1:A:372:ARG:HB2	1.94	0.50
1:B:424:LYS:HB2	3:B:876:HOH:O	2.10	0.50
1:A:74:THR:OG1	1:A:79:HIS:HD2	1.94	0.50
1:A:423:ARG:HB3	1:A:428:SER:O	2.12	0.50
1:A:41:ASN:CA	3:A:705:HOH:O	2.28	0.49
1:A:247:THR:HG22	1:A:249:THR:HG22	1.94	0.49
1:A:378:THR:OG1	1:A:384:GLN:CB	2.52	0.49
1:A:162:THR:HG22	1:A:339:PRO:CG	2.41	0.49
1:A:180:ASN:OD1	1:A:182:LYS:HB2	2.13	0.49
1:B:369:LYS:HG3	1:B:372:ARG:HH12	1.78	0.49
1:A:41:ASN:HD22	1:A:43:GLY:H	1.59	0.49
1:A:131:ILE:HG12	1:A:152:ILE:HD12	1.93	0.49
1:B:424:LYS:O	1:B:428:SER:CB	2.57	0.49
2:B:430:QLP:HA	3:B:855:HOH:O	2.12	0.49
1:A:361:LEU:HG	3:A:696:HOH:O	2.12	0.49
1:B:198:VAL:HG13	1:B:343:GLN:CB	2.43	0.48
1:A:317:ILE:HG12	1:A:321:LEU:HD22	1.94	0.48
1:A:129:ILE:HG13	1:A:186:ILE:HG13	1.95	0.48
1:A:46:PHE:HB3	1:A:260:THR:HG21	1.96	0.48
1:A:198:VAL:HG13	1:A:343:GLN:HB2	1.95	0.48
1:A:282:GLN:HE22	1:B:25:SER:H	1.61	0.48
1:B:133:PRO:O	1:B:192:HIS:CE1	2.66	0.48
1:A:372:ARG:HD3	3:A:565:HOH:O	2.13	0.48
1:B:374:THR:OG1	1:B:385:GLY:O	2.27	0.48
1:A:223:VAL:HG22	1:A:252:SER:CB	2.44	0.47
1:A:245:GLU:HG3	3:A:643:HOH:O	2.14	0.47
1:A:189:ASN:ND2	1:A:193:ASN:H	2.12	0.47
1:A:11:ASN:HD21	1:B:184:LYS:HA	1.80	0.47
1:A:162:THR:HG22	1:A:339:PRO:CD	2.45	0.47
1:A:423:ARG:CB	1:A:428:SER:HB2	2.45	0.47
1:A:11:ASN:ND2	1:A:11:ASN:N	2.58	0.47
1:B:154:LEU:HD23	1:B:170:LEU:HD13	1.96	0.47
1:B:76:GLY:O	1:B:281:HIS:HE1	1.98	0.47
1:B:90:TYR:O	1:B:94:VAL:HG22	2.15	0.46
1:A:154:LEU:HD23	1:A:170:LEU:HD13	1.97	0.46
1:A:358:LYS:HD3	1:A:358:LYS:N	2.30	0.46
1:A:370:ASP:OD2	1:A:389:SER:OG	2.31	0.46
1:A:12:LYS:HG3	1:A:14:ASP:H	1.79	0.46
1:A:41:ASN:ND2	1:A:43:GLY:H	2.13	0.46

*Continued on next page...*

*Continued from previous page...*

Atom-1	Atom-2	Interatomic distance (Å)	Clash overlap (Å)
1:B:12:LYS:HB3	3:B:909:HOH:O	2.15	0.46
1:A:37:TYR:HB2	3:A:629:HOH:O	2.15	0.45
1:A:406:TYR:HE1	3:A:721:HOH:O	1.98	0.45
1:A:260:THR:HG22	1:B:72:GLN:CA	2.46	0.45
1:B:42:LEU:HD22	1:B:383:LEU:HD11	1.98	0.45
1:A:368:ARG:HD3	1:A:397:LYS:CD	2.45	0.45
1:A:419:ALA:HB3	1:A:423:ARG:NH2	2.32	0.45
1:A:354:SER:O	1:A:355:LEU:HD23	2.16	0.45
1:B:23:THR:HG22	3:B:793:HOH:O	2.16	0.45
1:A:37:TYR:HD1	3:A:652:HOH:O	2.00	0.44
1:A:236:ARG:O	1:A:239:THR:CG2	2.63	0.44
1:A:352:TRP:O	1:A:352:TRP:CE3	2.70	0.44
1:A:179:PHE:HB3	1:A:214:TRP:CD1	2.51	0.44
1:B:317:ILE:HG12	1:B:321:LEU:HD22	1.99	0.44
1:A:383:LEU:CD2	1:A:422:LEU:CD1	2.96	0.44
1:B:394:GLU:HB3	1:B:395:PRO:HD3	1.98	0.44
1:A:384:GLN:HA	3:A:697:HOH:O	2.16	0.44
1:A:33:LEU:HD11	1:A:375:LYS:HE2	2.00	0.44
1:B:192:HIS:CD2	1:B:195:LEU:H	2.34	0.44
1:B:51:ALA:HB1	1:B:52:PRO:HD2	1.99	0.44
1:A:416:GLN:O	1:A:420:GLU:HG2	2.17	0.44
1:B:24:LYS:NZ	1:B:24:LYS:H	2.16	0.43
1:A:411:LYS:HE2	3:A:592:HOH:O	2.17	0.43
1:B:198:VAL:HG13	1:B:343:GLN:HB2	2.00	0.43
1:A:355:LEU:HD22	1:A:426:LYS:HD3	2.00	0.43
1:A:89:LEU:HG	1:A:93:LEU:HD22	1.99	0.43
1:B:327:TYR:OH	1:B:416:GLN:HA	2.18	0.43
1:B:190:THR:HA	1:B:191:PRO:C	2.38	0.43
1:B:46:PHE:HB3	1:B:260:THR:HG21	2.00	0.43
1:A:368:ARG:HG3	3:A:675:HOH:O	2.18	0.43
1:B:30:TYR:OH	1:B:374:THR:CG2	2.66	0.43
1:A:276:ASN:N	1:A:276:ASN:HD22	2.17	0.43
1:B:24:LYS:HE3	1:B:24:LYS:HB3	1.76	0.43
1:A:419:ALA:CB	1:A:423:ARG:NH2	2.83	0.42
1:B:376:TRP:O	1:B:380:SER:HB3	2.18	0.42
1:B:162:THR:HG23	3:B:920:HOH:O	2.19	0.42
1:B:420:GLU:OE2	1:B:423:ARG:CZ	2.68	0.42
1:B:193:ASN:HD21	1:B:405:ARG:NH1	2.13	0.42
1:B:94:VAL:HG23	1:B:96:ARG:HG2	2.01	0.42
1:A:239:THR:CG2	3:A:589:HOH:O	2.60	0.42
1:A:394:GLU:HB3	1:A:395:PRO:HD3	2.01	0.42

*Continued on next page...*

Continued from previous page...

Atom-1	Atom-2	Interatomic distance (Å)	Clash overlap (Å)
1:A:260:THR:HG22	1:B:73:TYR:H	1.81	0.42
1:B:324:LYS:HB3	1:B:415:LEU:HD21	2.01	0.42
1:A:411:LYS:CE	3:A:673:HOH:O	2.65	0.41
1:B:234:HIS:CD2	3:B:853:HOH:O	2.70	0.41
1:A:303:GLU:HA	1:A:303:GLU:OE1	2.20	0.41
1:A:181:GLU:HA	3:B:843:HOH:O	2.21	0.41
1:A:154:LEU:CD2	1:A:170:LEU:HD13	2.50	0.41
1:B:410:LYS:HB2	1:B:415:LEU:HD13	2.03	0.41
1:B:129:ILE:HD12	1:B:129:ILE:C	2.41	0.41
1:A:211:CYS:HA	1:A:216:VAL:HG22	2.01	0.41
1:A:338:ASN:HB2	1:A:351:ASP:HB3	2.03	0.41
1:A:37:TYR:HD2	3:A:676:HOH:O	2.04	0.41
1:A:229:PHE:HB3	1:A:322:MET:HE3	2.02	0.41
1:B:37:TYR:CE1	1:B:379:LYS:HG2	2.56	0.40
1:A:381:VAL:HG21	1:A:425:TRP:HB2	2.03	0.40
1:B:39:PRO:HG3	1:B:378:THR:HG23	2.02	0.40
1:A:282:GLN:NE2	1:B:25:SER:H	2.18	0.40
1:A:65:SER:HA	1:A:66:PRO:HD2	1.87	0.40
1:A:223:VAL:HG22	1:A:252:SER:HB2	2.03	0.40
1:A:210:LEU:HD13	3:A:661:HOH:O	2.21	0.40
1:A:401:GLU:HB3	3:A:641:HOH:O	2.22	0.40
1:B:328:MET:HA	1:B:331:PHE:CE2	2.57	0.40

There are no symmetry-related clashes.

## 5.3 Torsion angles [i](#)

### 5.3.1 Protein backbone [i](#)

In the following table, the Percentiles column shows the percent Ramachandran outliers of the chain as a percentile score with respect to all X-ray entries followed by that with respect to entries of similar resolution.

The Analysed column shows the number of residues for which the backbone conformation was analysed, and the total number of residues.

Mol	Chain	Analysed	Favoured	Allowed	Outliers	Percentiles	
1	A	417/429 (97%)	402 (96%)	12 (3%)	3 (1%)	26	10
1	B	417/429 (97%)	407 (98%)	10 (2%)	0	100	100
All	All	834/858 (97%)	809 (97%)	22 (3%)	3 (0%)	39	22

All (3) Ramachandran outliers are listed below:

Mol	Chain	Res	Type
1	A	354	SER
1	A	397	LYS
1	A	160	GLY

### 5.3.2 Protein sidechains ⓘ

In the following table, the Percentiles column shows the percent sidechain outliers of the chain as a percentile score with respect to all X-ray entries followed by that with respect to entries of similar resolution.

The Analysed column shows the number of residues for which the sidechain conformation was analysed, and the total number of residues.

Mol	Chain	Analysed	Rotameric	Outliers	Percentiles	
1	A	357/367 (97%)	323 (90%)	34 (10%)	11	2
1	B	357/367 (97%)	324 (91%)	33 (9%)	11	2
All	All	714/734 (97%)	647 (91%)	67 (9%)	11	2

All (67) residues with a non-rotameric sidechain are listed below:

Mol	Chain	Res	Type
1	A	11	ASN
1	A	12	LYS
1	A	17	LYS
1	A	24	LYS
1	A	28	VAL
1	A	33	LEU
1	A	41	ASN
1	A	69	LEU
1	A	82	LEU
1	A	92	GLN
1	A	93	LEU
1	A	111	TYR
1	A	112	GLU
1	A	129	ILE
1	A	152	ILE
1	A	170	LEU
1	A	175	LEU
1	A	210	LEU
1	A	216	VAL
1	A	223	VAL

*Continued on next page...*

*Continued from previous page...*

Mol	Chain	Res	Type
1	A	239	THR
1	A	249	THR
1	A	260	THR
1	A	276	ASN
1	A	277	LEU
1	A	321	LEU
1	A	335	VAL
1	A	346	TYR
1	A	357	SER
1	A	358	LYS
1	A	359	VAL
1	A	368	ARG
1	A	374	THR
1	A	415	LEU
1	B	12	LYS
1	B	17	LYS
1	B	24	LYS
1	B	26	VAL
1	B	28	VAL
1	B	41	ASN
1	B	69	LEU
1	B	82	LEU
1	B	86	LEU
1	B	93	LEU
1	B	97	THR
1	B	111	TYR
1	B	129	ILE
1	B	162	THR
1	B	170	LEU
1	B	175	LEU
1	B	178	LEU
1	B	193	ASN
1	B	210	LEU
1	B	239	THR
1	B	274	LEU
1	B	276	ASN
1	B	321	LEU
1	B	335	VAL
1	B	346	TYR
1	B	358	LYS
1	B	361	LEU
1	B	368	ARG

*Continued on next page...*



*Continued from previous page...*

Mol	Chain	Res	Type
1	B	409	PHE
1	B	415	LEU
1	B	422	LEU
1	B	424	LYS
1	B	426	LYS

Some sidechains can be flipped to improve hydrogen bonding and reduce clashes. All (27) such sidechains are listed below:

Mol	Chain	Res	Type
1	A	11	ASN
1	A	36	GLN
1	A	41	ASN
1	A	71	ASN
1	A	79	HIS
1	A	84	GLN
1	A	119	GLN
1	A	121	HIS
1	A	189	ASN
1	A	226	HIS
1	A	276	ASN
1	A	278	GLN
1	A	282	GLN
1	B	11	ASN
1	B	36	GLN
1	B	41	ASN
1	B	79	HIS
1	B	84	GLN
1	B	192	HIS
1	B	193	ASN
1	B	226	HIS
1	B	234	HIS
1	B	276	ASN
1	B	278	GLN
1	B	281	HIS
1	B	282	GLN
1	B	414	ASN

### 5.3.3 RNA ⓘ

There are no RNA molecules in this entry.

## 5.4 Non-standard residues in protein, DNA, RNA chains ⓘ

There are no non-standard protein/DNA/RNA residues in this entry.

## 5.5 Carbohydrates ⓘ

There are no carbohydrates in this entry.

## 5.6 Ligand geometry ⓘ

2 ligands are modelled in this entry.

In the following table, the Counts columns list the number of bonds (or angles) for which Mogul statistics could be retrieved, the number of bonds (or angles) that are observed in the model and the number of bonds (or angles) that are defined in the chemical component dictionary. The Link column lists molecule types, if any, to which the group is linked. The Z score for a bond length (or angle) is the number of standard deviations the observed value is removed from the expected value. A bond length (or angle) with  $|Z| > 2$  is considered an outlier worth inspection. RMSZ is the root-mean-square of all Z scores of the bond lengths (or angles).

Mol	Type	Chain	Res	Link	Bond lengths			Bond angles		
					Counts	RMSZ	$\# Z  > 2$	Counts	RMSZ	$\# Z  > 2$
2	QLP	A	430	-	22,25,25	1.01	1 (4%)	26,35,35	1.82	4 (15%)
2	QLP	B	430	-	22,25,25	1.46	2 (9%)	26,35,35	2.27	5 (19%)

In the following table, the Chirals column lists the number of chiral outliers, the number of chiral centers analysed, the number of these observed in the model and the number defined in the chemical component dictionary. Similar counts are reported in the Torsion and Rings columns. '-' means no outliers of that kind were identified.

Mol	Type	Chain	Res	Link	Chirals	Torsions	Rings
2	QLP	A	430	-	-	0/16/20/20	0/1/1/1
2	QLP	B	430	-	-	0/16/20/20	0/1/1/1

All (3) bond length outliers are listed below:

Mol	Chain	Res	Type	Atoms	Z	Observed(Å)	Ideal(Å)
2	B	430	QLP	O3-C3	-4.58	1.26	1.37
2	A	430	QLP	O3-C3	-3.21	1.29	1.37
2	B	430	QLP	C4A-C4	2.73	1.55	1.51

All (9) bond angle outliers are listed below:

Mol	Chain	Res	Type	Atoms	Z	Observed(°)	Ideal(°)
2	B	430	QLP	CG-CB-CA	-3.29	106.29	112.98
2	A	430	QLP	O2P-P-O4P	-3.04	97.81	106.56
2	B	430	QLP	C5-C6-N1	-2.88	118.87	123.86
2	A	430	QLP	O3-C3-C2	2.00	121.14	117.66
2	A	430	QLP	C4A-C4-C5	2.79	122.20	119.71
2	B	430	QLP	C4A-C4-C5	3.03	122.41	119.71
2	B	430	QLP	C6-C5-C4	4.26	121.27	118.09
2	A	430	QLP	C4A-N-CA	6.59	123.89	113.81
2	B	430	QLP	C4A-N-CA	8.45	126.73	113.81

There are no chirality outliers.

There are no torsion outliers.

There are no ring outliers.

2 monomers are involved in 2 short contacts:

Mol	Chain	Res	Type	Clashes	Symm-Clashes
2	A	430	QLP	1	0
2	B	430	QLP	1	0

## 5.7 Other polymers [i](#)

There are no such residues in this entry.

## 5.8 Polymer linkage issues [i](#)

There are no chain breaks in this entry.

## 6 Fit of model and data ⓘ

### 6.1 Protein, DNA and RNA chains ⓘ

In the following table, the column labelled ‘#RSRZ> 2’ contains the number (and percentage) of RSRZ outliers, followed by percent RSRZ outliers for the chain as percentile scores relative to all X-ray entries and entries of similar resolution. The OWAB column contains the minimum, median, 95<sup>th</sup> percentile and maximum values of the occupancy-weighted average B-factor per residue. The column labelled ‘Q< 0.9’ lists the number of (and percentage) of residues with an average occupancy less than 0.9.

Mol	Chain	Analysed	<RSRZ>	#RSRZ>2	OWAB(Å <sup>2</sup> )	Q<0.9
1	A	419/429 (97%)	0.63	62 (14%) 3 2	19, 32, 56, 73	0
1	B	419/429 (97%)	0.16	15 (3%) 46 42	18, 28, 45, 67	0
All	All	838/858 (97%)	0.40	77 (9%) 11 10	18, 29, 52, 73	0

All (77) RSRZ outliers are listed below:

Mol	Chain	Res	Type	RSRZ
1	A	429	SER	10.0
1	A	363	GLN	9.8
1	B	429	SER	7.6
1	A	428	SER	6.9
1	A	422	LEU	6.7
1	B	161	GLY	6.1
1	A	425	TRP	5.8
1	A	356	ASP	5.4
1	B	159	THR	5.2
1	B	428	SER	5.0
1	B	427	GLY	4.9
1	A	365	THR	4.7
1	A	374	THR	4.7
1	A	359	VAL	4.6
1	A	39	PRO	4.5
1	A	11	ASN	4.5
1	A	162	THR	4.3
1	A	159	THR	4.3
1	A	36	GLN	4.2
1	B	160	GLY	4.2
1	A	353	SER	4.2
1	A	364	GLU	4.1
1	A	23	THR	4.0
1	A	427	GLY	4.0

*Continued on next page...*

*Continued from previous page...*

Mol	Chain	Res	Type	RSRZ
1	A	418	ALA	3.9
1	A	352	TRP	3.7
1	A	32	GLN	3.6
1	A	421	ILE	3.6
1	A	424	LYS	3.4
1	A	38	LYS	3.3
1	A	161	GLY	3.2
1	A	21	GLY	3.2
1	A	360	ASP	3.2
1	B	357	SER	3.1
1	A	367	ALA	3.1
1	A	163	ILE	3.1
1	A	383	LEU	3.1
1	B	158	LYS	3.0
1	B	23	THR	3.0
1	A	385	GLY	3.0
1	A	22	SER	3.0
1	A	426	LYS	3.0
1	A	338	ASN	3.0
1	A	31	ILE	2.8
1	A	366	ASP	2.8
1	B	11	ASN	2.8
1	A	160	GLY	2.8
1	A	361	LEU	2.8
1	A	24	LYS	2.7
1	A	376	TRP	2.7
1	A	110	ALA	2.6
1	A	404	VAL	2.5
1	A	250	ILE	2.5
1	A	20	GLN	2.4
1	A	378	THR	2.4
1	A	28	VAL	2.4
1	A	336	GLY	2.4
1	A	27	TRP	2.4
1	A	42	LEU	2.4
1	A	357	SER	2.4
1	A	26	VAL	2.3
1	A	158	LYS	2.3
1	B	20	GLN	2.3
1	B	362	THR	2.3
1	A	382	GLY	2.3
1	A	373	PHE	2.2

*Continued on next page...*

*Continued from previous page...*

Mol	Chain	Res	Type	RSRZ
1	B	162	THR	2.2
1	A	135	PHE	2.2
1	A	114	LEU	2.1
1	A	379	LYS	2.1
1	A	223	VAL	2.1
1	B	17	LYS	2.0
1	A	347	PHE	2.0
1	B	250	ILE	2.0
1	A	37	TYR	2.0
1	A	380	SER	2.0
1	A	187	ILE	2.0

## 6.2 Non-standard residues in protein, DNA, RNA chains [i](#)

There are no non-standard protein/DNA/RNA residues in this entry.

## 6.3 Carbohydrates [i](#)

There are no carbohydrates in this entry.

## 6.4 Ligands [i](#)

In the following table, the Atoms column lists the number of modelled atoms in the group and the number defined in the chemical component dictionary. LLDF column lists the quality of electron density of the group with respect to its neighbouring residues in protein, DNA or RNA chains. The B-factors column lists the minimum, median, 95<sup>th</sup> percentile and maximum values of B factors of atoms in the group. The column labelled 'Q< 0.9' lists the number of atoms with occupancy less than 0.9.

Mol	Type	Chain	Res	Atoms	RSCC	RSR	LLDF	B-factors(Å <sup>2</sup> )	Q<0.9
2	QLP	A	430	25/25	0.96	0.18	0.59	18,26,38,42	1
2	QLP	B	430	25/25	0.97	0.14	0.26	18,23,30,34	0

## 6.5 Other polymers [i](#)

There are no such residues in this entry.