



Full wwPDB X-ray Structure Validation Report ⓘ

Feb 1, 2016 – 08:19 PM GMT

PDB ID : 4R7M
Title : Structure of the m17 leucyl aminopeptidase from malaria complexed with a hydroxamic acid-based inhibitor
Authors : Drinkwater, N.; McGowan, S.
Deposited on : 2014-08-28
Resolution : 2.85 Å(reported)

This is a Full wwPDB X-ray Structure Validation Report for a publicly released PDB entry.
We welcome your comments at validation@mail.wwpdb.org
A user guide is available at
<http://wwpdb.org/validation/2016/XrayValidationReportHelp>
with specific help available everywhere you see the ⓘ symbol.

The following versions of software and data (see [references ⓘ](#)) were used in the production of this report:

MolProbity : 4.02b-467
Mogul : 1.7 (RC4), CSD as536be (2015)
Xtriage (Phenix) : 1.9-1692
EDS : rb-20026688
Percentile statistics : 20151230.v01 (using entries in the PDB archive December 30th 2015)
Refmac : 5.8.0135
CCP4 : 6.5.0
Ideal geometry (proteins) : Engh & Huber (2001)
Ideal geometry (DNA, RNA) : Parkinson et al. (1996)
Validation Pipeline (wwPDB-VP) : trunk26865

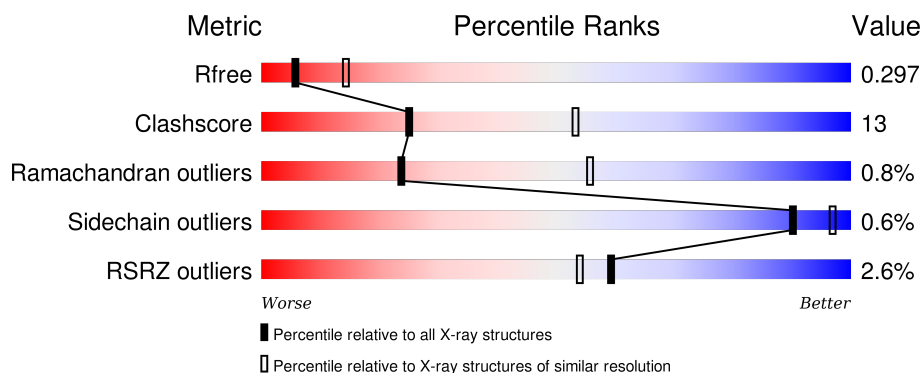
1 Overall quality at a glance

The following experimental techniques were used to determine the structure:

X-RAY DIFFRACTION

The reported resolution of this entry is 2.85 Å.

Percentile scores (ranging between 0-100) for global validation metrics of the entry are shown in the following graphic. The table shows the number of entries on which the scores are based.



Metric	Whole archive (#Entries)	Similar resolution (#Entries, resolution range(Å))
R_{free}	91344	2228 (2.90-2.82)
Clashscore	102246	2499 (2.90-2.82)
Ramachandran outliers	100387	2439 (2.90-2.82)
Sidechain outliers	100360	2442 (2.90-2.82)
RSRZ outliers	91569	2236 (2.90-2.82)

The table below summarises the geometric issues observed across the polymeric chains and their fit to the electron density. The red, orange, yellow and green segments on the lower bar indicate the fraction of residues that contain outliers for ≥ 3 , 2, 1 and 0 types of geometric quality criteria. A grey segment represents the fraction of residues that are not modelled. The numeric value for each fraction is indicated below the corresponding segment, with a dot representing fractions $\leq 5\%$. The upper red bar (where present) indicates the fraction of residues that have poor fit to the electron density. The numeric value is given above the bar.

Mol	Chain	Length	Quality of chain
1	A	528	<div> <div>2%</div> <div>69% 28% .</div> </div>
1	B	528	<div> <div>4%</div> <div>71% 26% .</div> </div>
1	C	528	<div> <div>3%</div> <div>70% 27% ..</div> </div>
1	D	528	<div> <div>2%</div> <div>72% 24% ...</div> </div>
1	E	528	<div> <div>0%</div> <div>71% 25% .</div> </div>

Continued on next page...

Continued from previous page...

Mol	Chain	Length	Quality of chain
1	F	528	
1	G	528	
1	H	528	
1	I	528	
1	J	528	
1	K	528	
1	L	528	

The following table lists non-polymeric compounds, carbohydrate monomers and non-standard residues in protein, DNA, RNA chains that are outliers for geometric or electron-density-fit criteria:

Mol	Type	Chain	Res	Chirality	Geometry	Clashes	Electron density
3	CO3	D	1002	-	-	-	X
4	1PE	C	1006	-	-	X	-
4	1PE	G	1007	-	-	X	-
4	1PE	K	1005	-	-	-	X
6	SO4	B	1004	-	-	X	-
6	SO4	G	1004	-	-	X	-
6	SO4	G	1005	-	-	-	X
6	SO4	L	1004	-	-	X	-

2 Entry composition

There are 8 unique types of molecules in this entry. The entry contains 47476 atoms, of which 6 are hydrogens and 0 are deuteriums.

In the tables below, the ZeroOcc column contains the number of atoms modelled with zero occupancy, the AltConf column contains the number of residues with at least one atom in alternate conformation and the Trace column contains the number of residues modelled with at most 2 atoms.

- Molecule 1 is a protein called M17 leucyl aminopeptidase.

Mol	Chain	Residues	Atoms					ZeroOcc	AltConf	Trace
1	A	516	Total	C	N	O	S	0	0	0
			3948	2538	633	758	19			
1	B	512	Total	C	N	O	S	0	0	0
			3860	2484	625	732	19			
1	C	518	Total	C	N	O	S	0	1	0
			3960	2546	640	755	19			
1	D	514	Total	C	N	O	S	0	0	0
			3935	2534	633	748	20			
1	E	510	Total	C	N	O	S	0	0	0
			3898	2510	625	744	19			
1	F	510	Total	C	N	O	S	0	0	0
			3792	2443	612	718	19			
1	G	513	Total	C	N	O	S	0	0	0
			3943	2535	632	757	19			
1	H	511	Total	C	N	O	S	0	0	0
			3872	2489	625	739	19			
1	I	516	Total	C	N	O	S	0	0	0
			3908	2516	629	744	19			
1	J	511	Total	C	N	O	S	0	0	0
			3898	2511	629	739	19			
1	K	509	Total	C	N	O	S	0	0	0
			3884	2505	623	737	19			
1	L	509	Total	C	N	O	S	0	0	0
			3819	2453	614	733	19			

There are 108 discrepancies between the modelled and reference sequences:

Chain	Residue	Modelled	Actual	Comment	Reference
A	152	GLN	ASN	ENGINEERED MUTATION	UNP Q8IL11
A	515	GLN	ASN	ENGINEERED MUTATION	UNP Q8IL11
A	546	GLN	ASN	ENGINEERED MUTATION	UNP Q8IL11
A	606	HIS	-	EXPRESSION TAG	UNP Q8IL11
A	607	HIS	-	EXPRESSION TAG	UNP Q8IL11

Continued on next page...

Continued from previous page...

Chain	Residue	Modelled	Actual	Comment	Reference
A	608	HIS	-	EXPRESSION TAG	UNP Q8IL11
A	609	HIS	-	EXPRESSION TAG	UNP Q8IL11
A	610	HIS	-	EXPRESSION TAG	UNP Q8IL11
A	611	HIS	-	EXPRESSION TAG	UNP Q8IL11
B	152	GLN	ASN	ENGINEERED MUTATION	UNP Q8IL11
B	515	GLN	ASN	ENGINEERED MUTATION	UNP Q8IL11
B	546	GLN	ASN	ENGINEERED MUTATION	UNP Q8IL11
B	606	HIS	-	EXPRESSION TAG	UNP Q8IL11
B	607	HIS	-	EXPRESSION TAG	UNP Q8IL11
B	608	HIS	-	EXPRESSION TAG	UNP Q8IL11
B	609	HIS	-	EXPRESSION TAG	UNP Q8IL11
B	610	HIS	-	EXPRESSION TAG	UNP Q8IL11
B	611	HIS	-	EXPRESSION TAG	UNP Q8IL11
C	152	GLN	ASN	ENGINEERED MUTATION	UNP Q8IL11
C	515	GLN	ASN	ENGINEERED MUTATION	UNP Q8IL11
C	546	GLN	ASN	ENGINEERED MUTATION	UNP Q8IL11
C	606	HIS	-	EXPRESSION TAG	UNP Q8IL11
C	607	HIS	-	EXPRESSION TAG	UNP Q8IL11
C	608	HIS	-	EXPRESSION TAG	UNP Q8IL11
C	609	HIS	-	EXPRESSION TAG	UNP Q8IL11
C	610	HIS	-	EXPRESSION TAG	UNP Q8IL11
C	611	HIS	-	EXPRESSION TAG	UNP Q8IL11
D	152	GLN	ASN	ENGINEERED MUTATION	UNP Q8IL11
D	515	GLN	ASN	ENGINEERED MUTATION	UNP Q8IL11
D	546	GLN	ASN	ENGINEERED MUTATION	UNP Q8IL11
D	606	HIS	-	EXPRESSION TAG	UNP Q8IL11
D	607	HIS	-	EXPRESSION TAG	UNP Q8IL11
D	608	HIS	-	EXPRESSION TAG	UNP Q8IL11
D	609	HIS	-	EXPRESSION TAG	UNP Q8IL11
D	610	HIS	-	EXPRESSION TAG	UNP Q8IL11
D	611	HIS	-	EXPRESSION TAG	UNP Q8IL11
E	152	GLN	ASN	ENGINEERED MUTATION	UNP Q8IL11
E	515	GLN	ASN	ENGINEERED MUTATION	UNP Q8IL11
E	546	GLN	ASN	ENGINEERED MUTATION	UNP Q8IL11
E	606	HIS	-	EXPRESSION TAG	UNP Q8IL11
E	607	HIS	-	EXPRESSION TAG	UNP Q8IL11
E	608	HIS	-	EXPRESSION TAG	UNP Q8IL11
E	609	HIS	-	EXPRESSION TAG	UNP Q8IL11
E	610	HIS	-	EXPRESSION TAG	UNP Q8IL11
E	611	HIS	-	EXPRESSION TAG	UNP Q8IL11
F	152	GLN	ASN	ENGINEERED MUTATION	UNP Q8IL11
F	515	GLN	ASN	ENGINEERED MUTATION	UNP Q8IL11

Continued on next page...

Continued from previous page...

Chain	Residue	Modelled	Actual	Comment	Reference
F	546	GLN	ASN	ENGINEERED MUTATION	UNP Q8IL11
F	606	HIS	-	EXPRESSION TAG	UNP Q8IL11
F	607	HIS	-	EXPRESSION TAG	UNP Q8IL11
F	608	HIS	-	EXPRESSION TAG	UNP Q8IL11
F	609	HIS	-	EXPRESSION TAG	UNP Q8IL11
F	610	HIS	-	EXPRESSION TAG	UNP Q8IL11
F	611	HIS	-	EXPRESSION TAG	UNP Q8IL11
G	152	GLN	ASN	ENGINEERED MUTATION	UNP Q8IL11
G	515	GLN	ASN	ENGINEERED MUTATION	UNP Q8IL11
G	546	GLN	ASN	ENGINEERED MUTATION	UNP Q8IL11
G	606	HIS	-	EXPRESSION TAG	UNP Q8IL11
G	607	HIS	-	EXPRESSION TAG	UNP Q8IL11
G	608	HIS	-	EXPRESSION TAG	UNP Q8IL11
G	609	HIS	-	EXPRESSION TAG	UNP Q8IL11
G	610	HIS	-	EXPRESSION TAG	UNP Q8IL11
G	611	HIS	-	EXPRESSION TAG	UNP Q8IL11
H	152	GLN	ASN	ENGINEERED MUTATION	UNP Q8IL11
H	515	GLN	ASN	ENGINEERED MUTATION	UNP Q8IL11
H	546	GLN	ASN	ENGINEERED MUTATION	UNP Q8IL11
H	606	HIS	-	EXPRESSION TAG	UNP Q8IL11
H	607	HIS	-	EXPRESSION TAG	UNP Q8IL11
H	608	HIS	-	EXPRESSION TAG	UNP Q8IL11
H	609	HIS	-	EXPRESSION TAG	UNP Q8IL11
H	610	HIS	-	EXPRESSION TAG	UNP Q8IL11
H	611	HIS	-	EXPRESSION TAG	UNP Q8IL11
I	152	GLN	ASN	ENGINEERED MUTATION	UNP Q8IL11
I	515	GLN	ASN	ENGINEERED MUTATION	UNP Q8IL11
I	546	GLN	ASN	ENGINEERED MUTATION	UNP Q8IL11
I	606	HIS	-	EXPRESSION TAG	UNP Q8IL11
I	607	HIS	-	EXPRESSION TAG	UNP Q8IL11
I	608	HIS	-	EXPRESSION TAG	UNP Q8IL11
I	609	HIS	-	EXPRESSION TAG	UNP Q8IL11
I	610	HIS	-	EXPRESSION TAG	UNP Q8IL11
I	611	HIS	-	EXPRESSION TAG	UNP Q8IL11
J	152	GLN	ASN	ENGINEERED MUTATION	UNP Q8IL11
J	515	GLN	ASN	ENGINEERED MUTATION	UNP Q8IL11
J	546	GLN	ASN	ENGINEERED MUTATION	UNP Q8IL11
J	606	HIS	-	EXPRESSION TAG	UNP Q8IL11
J	607	HIS	-	EXPRESSION TAG	UNP Q8IL11
J	608	HIS	-	EXPRESSION TAG	UNP Q8IL11
J	609	HIS	-	EXPRESSION TAG	UNP Q8IL11
J	610	HIS	-	EXPRESSION TAG	UNP Q8IL11

Continued on next page...

Continued from previous page...

Chain	Residue	Modelled	Actual	Comment	Reference
J	611	HIS	-	EXPRESSION TAG	UNP Q8IL11
K	152	GLN	ASN	ENGINEERED MUTATION	UNP Q8IL11
K	515	GLN	ASN	ENGINEERED MUTATION	UNP Q8IL11
K	546	GLN	ASN	ENGINEERED MUTATION	UNP Q8IL11
K	606	HIS	-	EXPRESSION TAG	UNP Q8IL11
K	607	HIS	-	EXPRESSION TAG	UNP Q8IL11
K	608	HIS	-	EXPRESSION TAG	UNP Q8IL11
K	609	HIS	-	EXPRESSION TAG	UNP Q8IL11
K	610	HIS	-	EXPRESSION TAG	UNP Q8IL11
K	611	HIS	-	EXPRESSION TAG	UNP Q8IL11
L	152	GLN	ASN	ENGINEERED MUTATION	UNP Q8IL11
L	515	GLN	ASN	ENGINEERED MUTATION	UNP Q8IL11
L	546	GLN	ASN	ENGINEERED MUTATION	UNP Q8IL11
L	606	HIS	-	EXPRESSION TAG	UNP Q8IL11
L	607	HIS	-	EXPRESSION TAG	UNP Q8IL11
L	608	HIS	-	EXPRESSION TAG	UNP Q8IL11
L	609	HIS	-	EXPRESSION TAG	UNP Q8IL11
L	610	HIS	-	EXPRESSION TAG	UNP Q8IL11
L	611	HIS	-	EXPRESSION TAG	UNP Q8IL11

- Molecule 2 is ZINC ION (three-letter code: ZN) (formula: Zn).

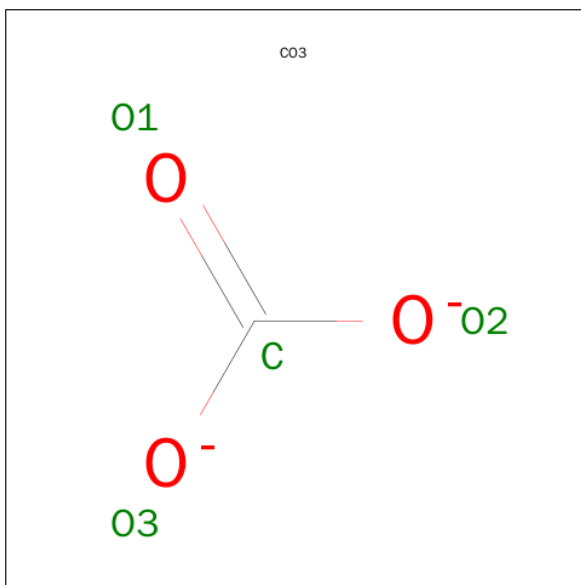
Mol	Chain	Residues	Atoms	ZeroOcc	AltConf
2	G	2	Total Zn 2 2	0	0
2	J	2	Total Zn 2 2	0	0
2	D	2	Total Zn 2 2	0	0
2	K	2	Total Zn 2 2	0	0
2	E	2	Total Zn 2 2	0	0
2	H	2	Total Zn 2 2	0	0
2	B	2	Total Zn 2 2	0	0
2	I	2	Total Zn 2 2	0	0
2	C	2	Total Zn 2 2	0	0
2	A	2	Total Zn 2 2	0	0

Continued on next page...

Continued from previous page...

Mol	Chain	Residues	Atoms		ZeroOcc	AltConf
2	L	2	Total	Zn	0	0
			2	2		
2	F	2	Total	Zn	0	0
			2	2		

- Molecule 3 is CARBONATE ION (three-letter code: CO3) (formula: CO₃).



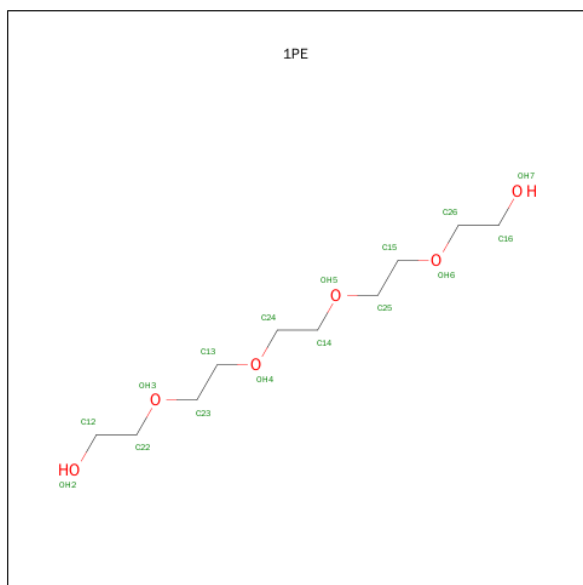
Mol	Chain	Residues	Atoms			ZeroOcc	AltConf
3	A	1	Total	C	O	0	0
			4	1	3		
3	B	1	Total	C	O	0	0
			4	1	3		
3	C	1	Total	C	O	0	0
			4	1	3		
3	D	1	Total	C	O	0	0
			4	1	3		
3	E	1	Total	C	O	0	0
			4	1	3		
3	F	1	Total	C	O	0	0
			4	1	3		
3	G	1	Total	C	O	0	0
			4	1	3		
3	H	1	Total	C	O	0	0
			4	1	3		
3	I	1	Total	C	O	0	0
			4	1	3		

Continued on next page...

Continued from previous page...

Mol	Chain	Residues	Atoms			ZeroOcc	AltConf
3	J	1	Total	C	O	0	0
			4	1	3		
3	K	1	Total	C	O	0	0
			4	1	3		
3	L	1	Total	C	O	0	0
			4	1	3		

- Molecule 4 is PENTAETHYLENE GLYCOL (three-letter code: 1PE) (formula: $C_{10}H_{22}O_6$).



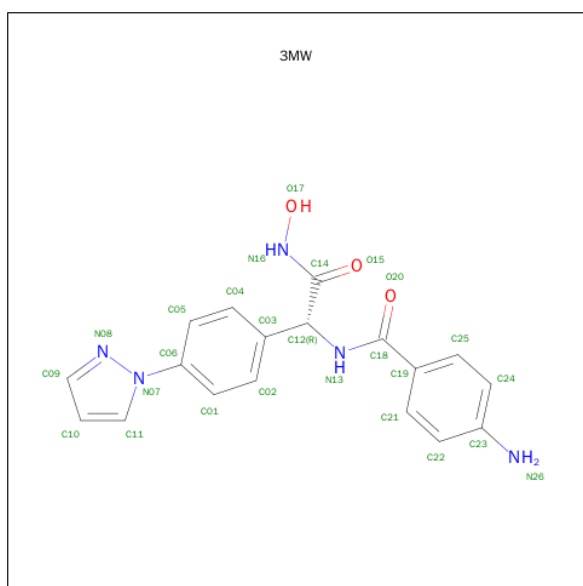
Mol	Chain	Residues	Atoms			ZeroOcc	AltConf
4	A	1	Total	C	O	0	0
			12	8	4		
4	A	1	Total	C	O	0	0
			8	5	3		
4	C	1	Total	C	O	0	0
			9	6	3		
4	C	1	Total	C	O	0	0
			8	5	3		
4	E	1	Total	C	O	0	0
			12	8	4		
4	E	1	Total	C	O	0	0
			6	4	2		
4	F	1	Total	C	O	0	0
			7	5	2		
4	G	1	Total	C	O	0	0
			10	7	3		

Continued on next page...

Continued from previous page...

Mol	Chain	Residues	Atoms			ZeroOcc	AltConf
4	G	1	Total	C	O	0	0
			13	8	5		
4	H	1	Total	C	O	0	0
			10	6	4		
4	K	1	Total	C	O	0	0
			12	8	4		

- Molecule 5 is 4-AMINO-N-[(1R)-2-(HYDROXYAMINO)-2-OXO-1-[4-(1H-PYRAZOL-1-YL)PHENYL]ETHYL]BENZAMIDE (three-letter code: 3MW) (formula: C₁₈H₁₇N₅O₃).



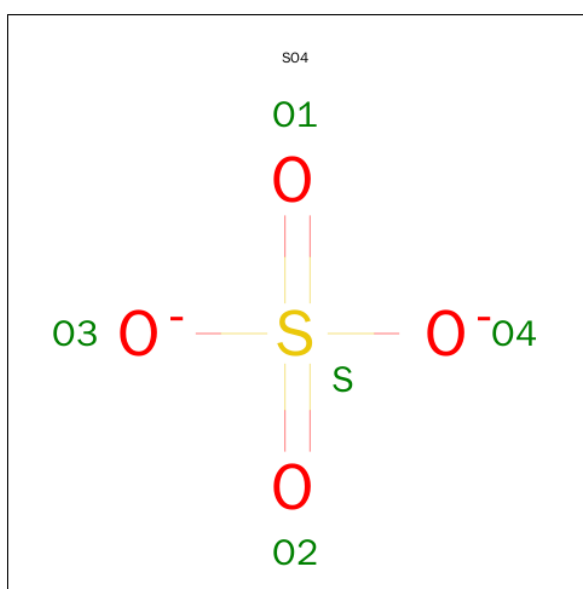
Mol	Chain	Residues	Atoms				ZeroOcc	AltConf
5	A	1	Total	C	N	O	0	0
			26	18	5	3		
5	B	1	Total	C	N	O	0	0
			26	18	5	3		
5	C	1	Total	C	N	O	0	0
			26	18	5	3		
5	D	1	Total	C	N	O	0	0
			26	18	5	3		
5	E	1	Total	C	N	O	0	0
			26	18	5	3		
5	F	1	Total	C	N	O	0	0
			26	18	5	3		
5	G	1	Total	C	N	O	0	0
			26	18	5	3		
5	H	1	Total	C	N	O	0	0
			26	18	5	3		

Continued on next page...

Continued from previous page...

Mol	Chain	Residues	Atoms				ZeroOcc	AltConf
5	I	1	Total	C	N	O	0	0
			26	18	5	3		
5	J	1	Total	C	N	O	0	0
			26	18	5	3		
5	K	1	Total	C	N	O	0	0
			26	18	5	3		
5	L	1	Total	C	N	O	0	0
			26	18	5	3		

- Molecule 6 is SULFATE ION (three-letter code: SO4) (formula: O₄S).



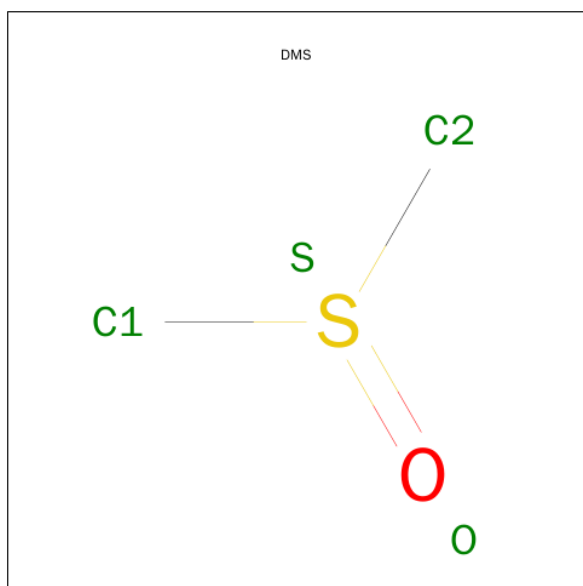
Mol	Chain	Residues	Atoms			ZeroOcc	AltConf
6	B	1	Total	O	S	0	0
			5	4	1		
6	C	1	Total	O	S	0	0
			5	4	1		
6	E	1	Total	O	S	0	0
			5	4	1		
6	G	1	Total	O	S	0	0
			5	4	1		
6	G	1	Total	O	S	0	0
			5	4	1		
6	J	1	Total	O	S	0	0
			5	4	1		
6	K	1	Total	O	S	0	0
			5	4	1		

Continued on next page...

Continued from previous page...

Mol	Chain	Residues	Atoms			ZeroOcc	AltConf
6	L	1	Total	O	S	0	0
			5	4	1		

- Molecule 7 is DIMETHYL SULFOXIDE (three-letter code: DMS) (formula: C₂H₆OS).



Mol	Chain	Residues	Atoms					ZeroOcc	AltConf
7	K	1	Total	C	H	O	S	0	0
			10	2	6	1	1		

- Molecule 8 is water.

Mol	Chain	Residues	Atoms		ZeroOcc	AltConf
8	A	26	Total	O	0	0
			26	26		
8	B	22	Total	O	0	0
			22	22		
8	C	17	Total	O	0	0
			17	17		
8	D	28	Total	O	0	0
			28	28		
8	E	23	Total	O	0	0
			23	23		
8	F	24	Total	O	0	0
			24	24		
8	G	17	Total	O	0	0
			17	17		

Continued on next page...

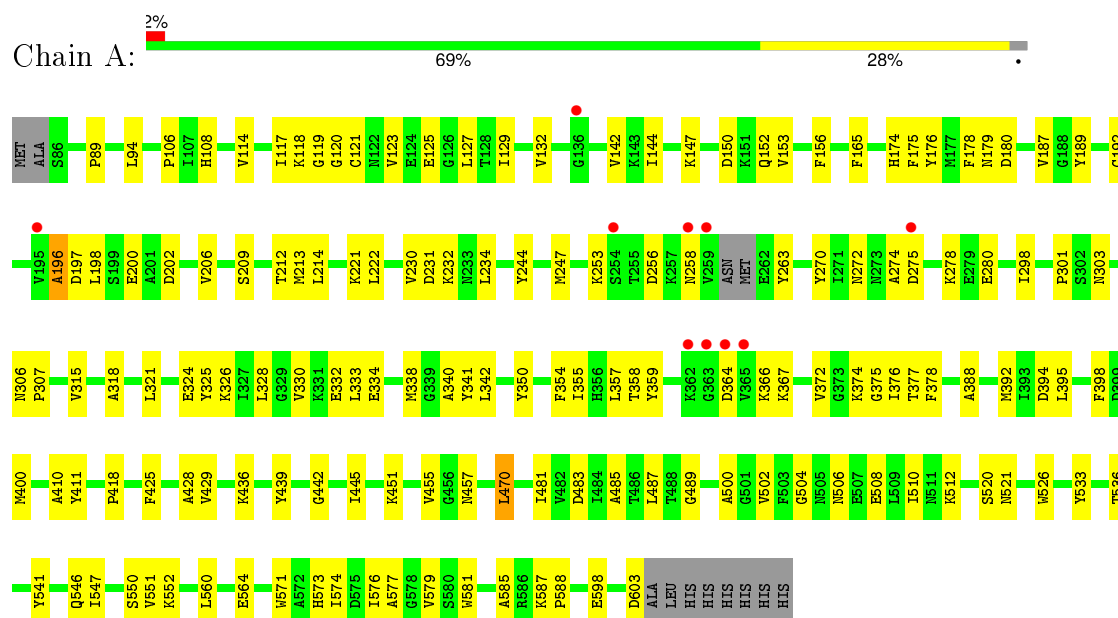
Continued from previous page...

Mol	Chain	Residues	Atoms		ZeroOcc	AltConf
8	H	13	Total 13	O 13	0	0
8	I	11	Total 11	O 11	0	0
8	J	14	Total 14	O 14	0	0
8	K	13	Total 13	O 13	0	0
8	L	10	Total 10	O 10	0	0

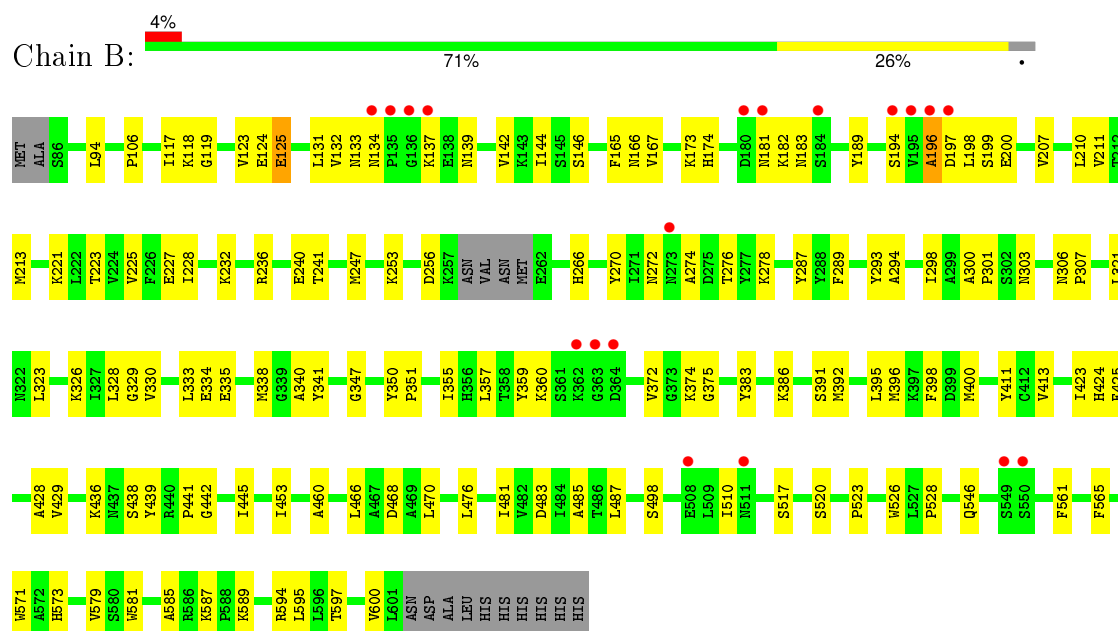
3 Residue-property plots

These plots are drawn for all protein, RNA and DNA chains in the entry. The first graphic for a chain summarises the proportions of errors displayed in the second graphic. The second graphic shows the sequence view annotated by issues in geometry and electron density. Residues are color-coded according to the number of geometric quality criteria for which they contain at least one outlier: green = 0, yellow = 1, orange = 2 and red = 3 or more. A red dot above a residue indicates a poor fit to the electron density ($RSRZ > 2$). Stretches of 2 or more consecutive residues without any outlier are shown as a green connector. Residues present in the sample, but not in the model, are shown in grey.

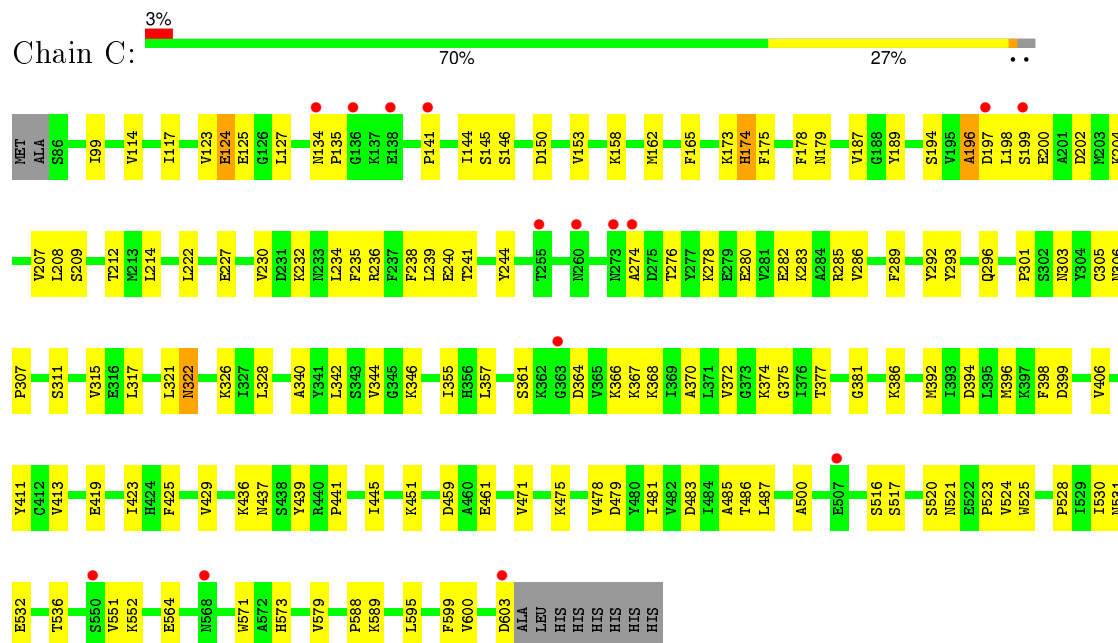
- Molecule 1: M17 leucyl aminopeptidase



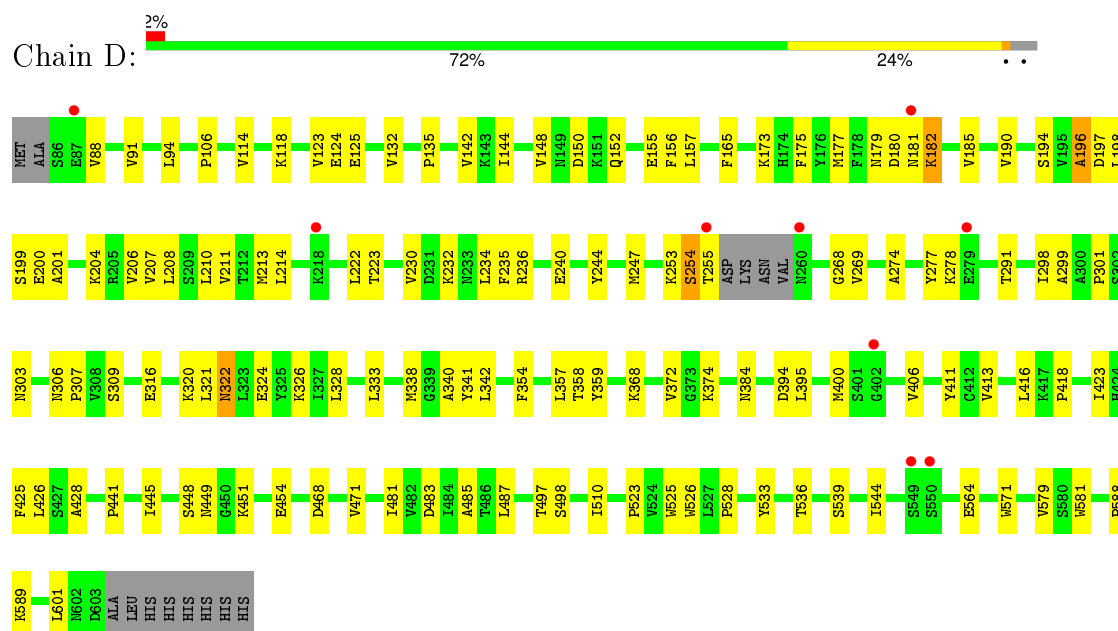
- Molecule 1: M17 leucyl aminopeptidase



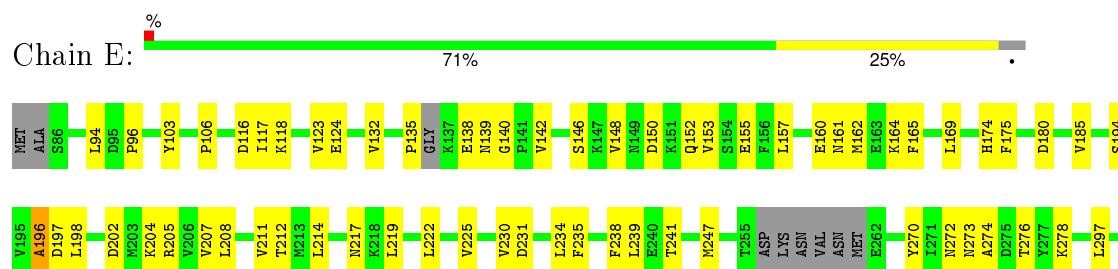
• Molecule 1: M17 leucyl aminopeptidase

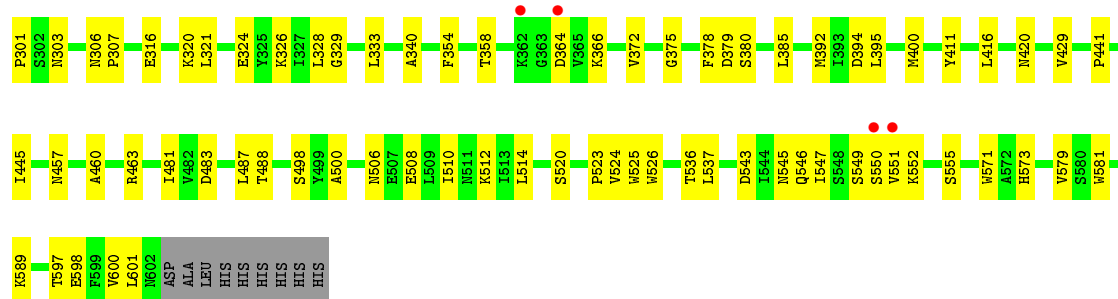


• Molecule 1: M17 leucyl aminopeptidase

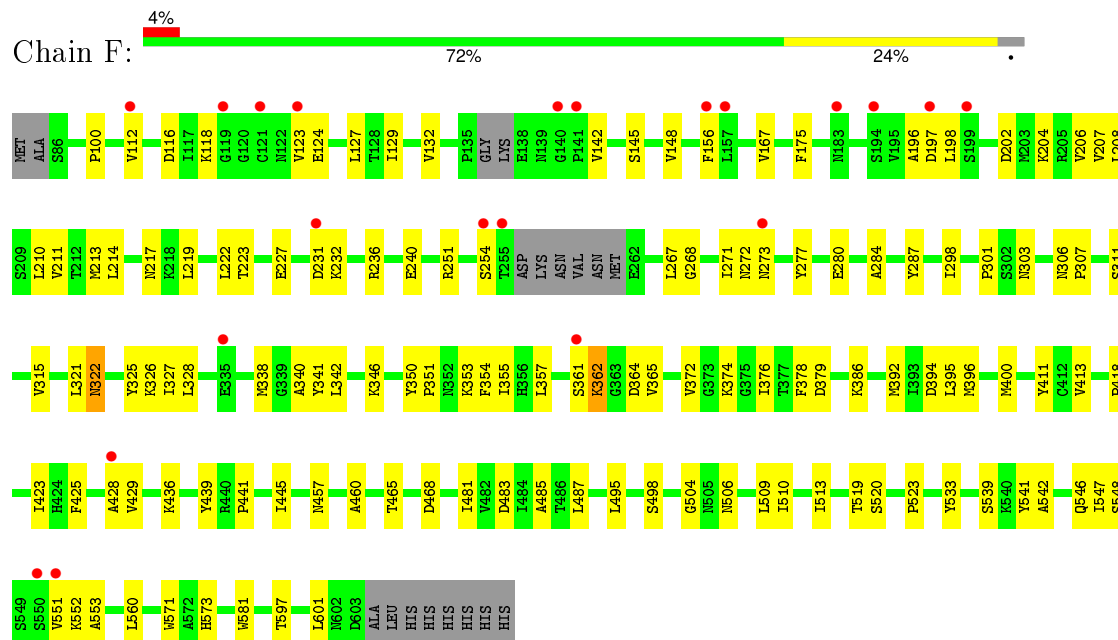


• Molecule 1: M17 leucyl aminopeptidase

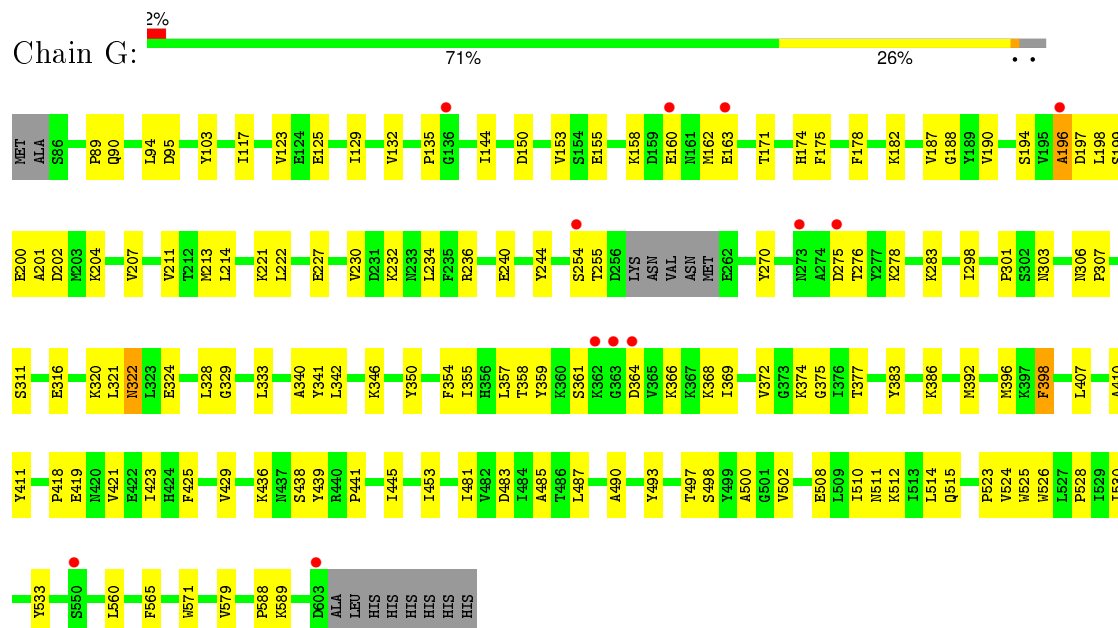




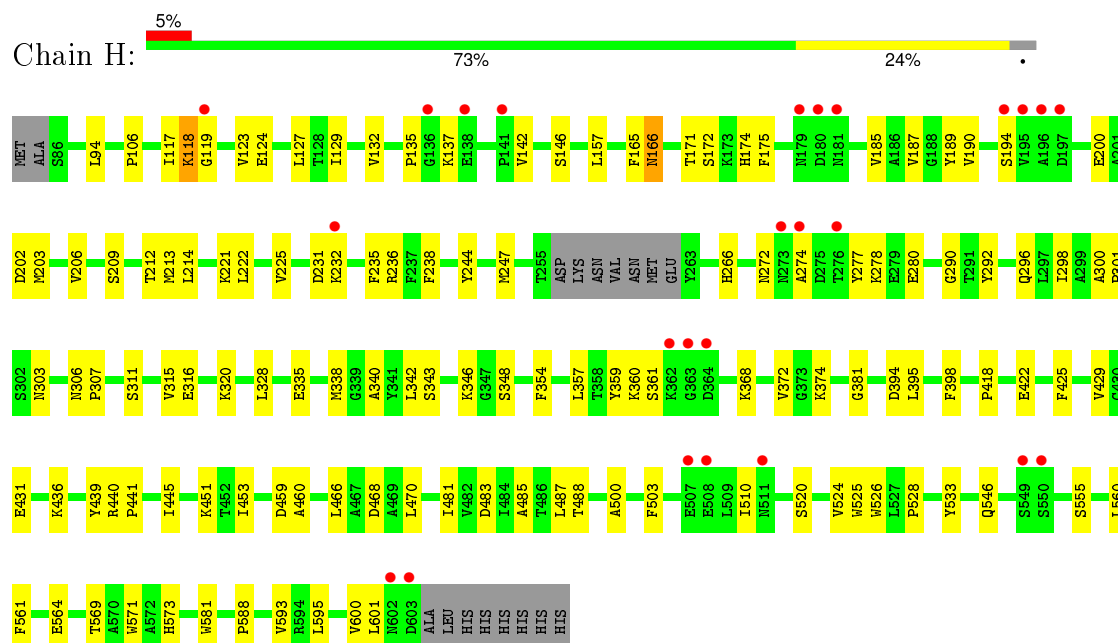
• Molecule 1: M17 leucyl aminopeptidase



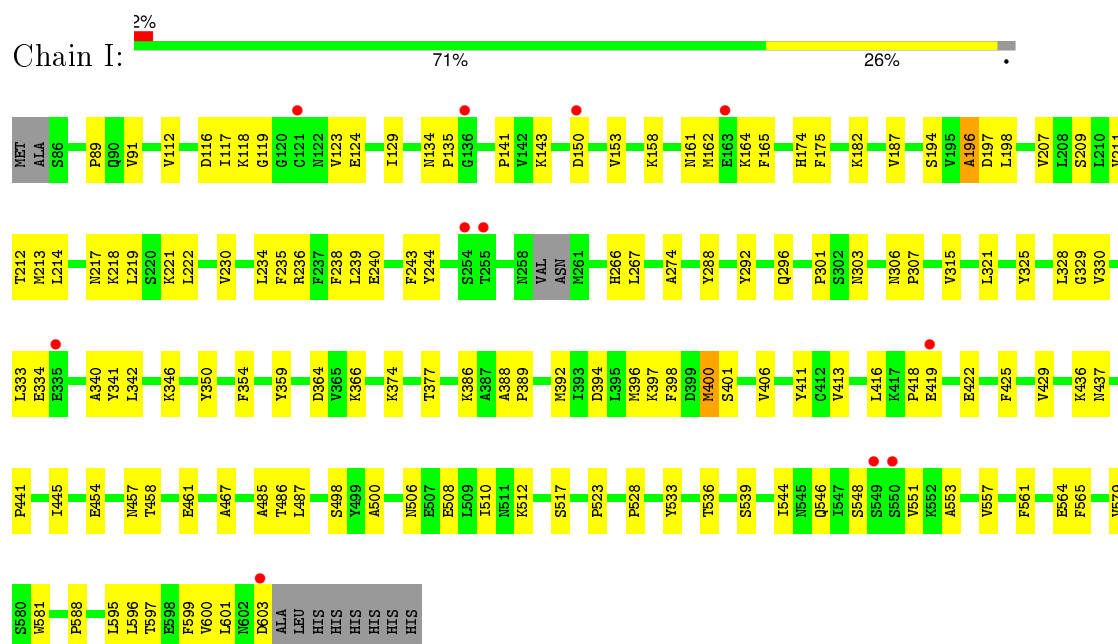
• Molecule 1: M17 leucyl aminopeptidase



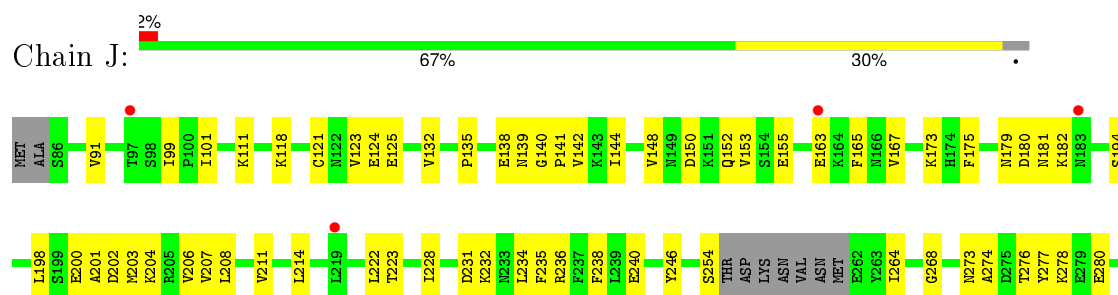
- Molecule 1: M17 leucyl aminopeptidase

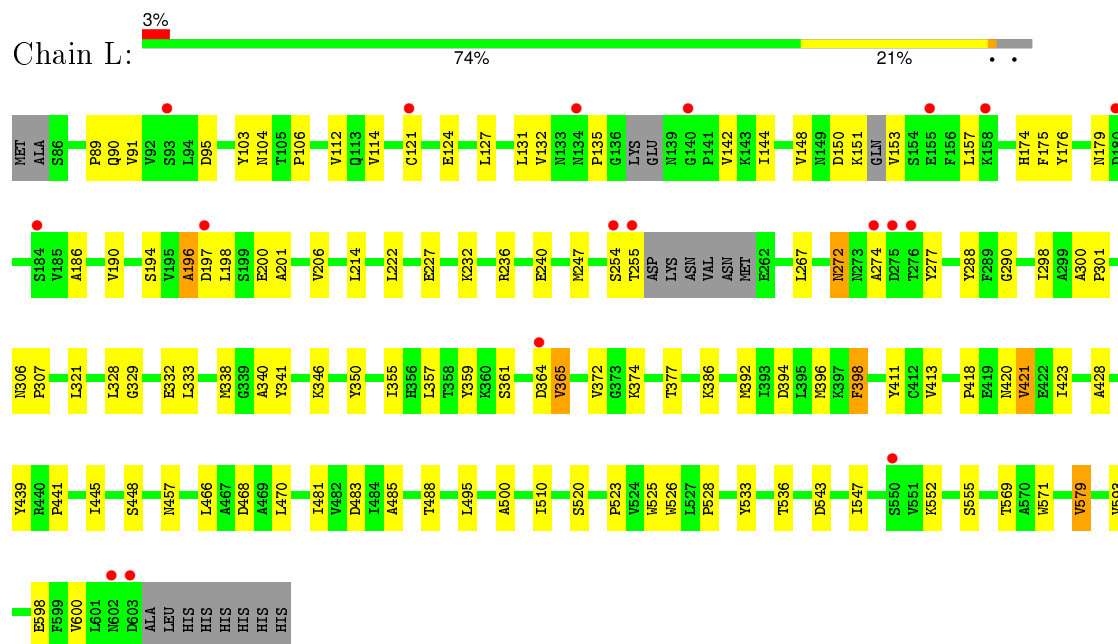


- Molecule 1: M17 leucyl aminopeptidase



- Molecule 1: M17 leucyl aminopeptidase





4 Data and refinement statistics

Property	Value	Source
Space group	P 21 21 21	Depositor
Cell constants a, b, c, α , β , γ	172.56Å 175.59Å 225.48Å 90.00° 90.00° 90.00°	Depositor
Resolution (Å)	36.01 – 2.85 36.01 – 2.85	Depositor EDS
% Data completeness (in resolution range)	90.2 (36.01-2.85) 90.3 (36.01-2.85)	Depositor EDS
R_{merge}	0.23	Depositor
R_{sym}	(Not available)	Depositor
$\langle I/\sigma(I) \rangle$ ¹	1.73 (at 2.85Å)	Xtriage
Refinement program	PHENIX (phenix.refine: 1.8.4_1496)	Depositor
R, R_{free}	0.237 , 0.291 0.252 , 0.297	Depositor DCC
R_{free} test set	7255 reflections (5.30%)	DCC
Wilson B-factor (Å ²)	23.6	Xtriage
Anisotropy	0.904	Xtriage
Bulk solvent k_{sol} (e/Å ³), B_{sol} (Å ²)	0.32 , 32.7	EDS
Estimated twinning fraction	0.000 for k,h,-l	Xtriage
L-test for twinning ²	$\langle L \rangle = 0.43$, $\langle L^2 \rangle = 0.25$	Xtriage
Outliers	1 of 144091 reflections (0.001%)	Xtriage
F_o, F_c correlation	0.89	EDS
Total number of atoms	47476	wwPDB-VP
Average B, all atoms (Å ²)	29.0	wwPDB-VP

Xtriage's analysis on translational NCS is as follows: *The analyses of the Patterson function reveals a significant off-origin peak that is 37.56 % of the origin peak, indicating pseudo translational symmetry. The chance of finding a peak of this or larger height randomly in a structure without pseudo translational symmetry is equal to 4.2130e-04. The detected translational NCS is most likely also responsible for the elevated intensity ratio.*

¹Intensities estimated from amplitudes.

²Theoretical values of $\langle |L| \rangle$, $\langle L^2 \rangle$ for acentric reflections are 0.5, 0.375 respectively for untwinned datasets, and 0.333, 0.2 for perfectly twinned datasets.

5 Model quality

5.1 Standard geometry

Bond lengths and bond angles in the following residue types are not validated in this section: CO3, 3MW, ZN, 1PE, DMS, SO4

The Z score for a bond length (or angle) is the number of standard deviations the observed value is removed from the expected value. A bond length (or angle) with $|Z| > 5$ is considered an outlier worth inspection. RMSZ is the root-mean-square of all Z scores of the bond lengths (or angles).

Mol	Chain	Bond lengths		Bond angles	
		RMSZ	$\# Z > 5$	RMSZ	$\# Z > 5$
1	A	0.23	0/4025	0.42	0/5461
1	B	0.22	0/3935	0.42	0/5348
1	C	0.23	0/4041	0.41	0/5484
1	D	0.23	0/4012	0.42	0/5440
1	E	0.23	0/3974	0.41	0/5392
1	F	0.23	0/3868	0.43	0/5267
1	G	0.23	0/4020	0.41	0/5451
1	H	0.23	0/3947	0.42	0/5362
1	I	0.23	0/3985	0.41	0/5410
1	J	0.22	0/3975	0.41	0/5393
1	K	0.22	0/3960	0.40	0/5372
1	L	0.22	0/3893	0.40	0/5293
All	All	0.23	0/47635	0.41	0/64673

There are no bond length outliers.

There are no bond angle outliers.

There are no chirality outliers.

There are no planarity outliers.

5.2 Too-close contacts

In the following table, the Non-H and H(model) columns list the number of non-hydrogen atoms and hydrogen atoms in the chain respectively. The H(added) column lists the number of hydrogen atoms added and optimized by MolProbity. The Clashes column lists the number of clashes within the asymmetric unit, whereas Symm-Clashes lists symmetry related clashes.

Mol	Chain	Non-H	H(model)	H(added)	Clashes	Symm-Clashes
1	A	3948	0	3861	115	0

Continued on next page...

Continued from previous page...

Mol	Chain	Non-H	H(model)	H(added)	Clashes	Symm-Clashes
1	B	3860	0	3733	92	0
1	C	3960	0	3887	115	1
1	D	3935	0	3867	101	0
1	E	3898	0	3824	102	1
1	F	3792	0	3601	96	0
1	G	3943	0	3877	112	0
1	H	3872	0	3758	102	0
1	I	3908	0	3800	97	0
1	J	3898	0	3822	120	0
1	K	3884	0	3813	99	0
1	L	3819	0	3653	96	0
2	A	2	0	0	0	0
2	B	2	0	0	0	0
2	C	2	0	0	0	0
2	D	2	0	0	0	0
2	E	2	0	0	0	0
2	F	2	0	0	0	0
2	G	2	0	0	0	0
2	H	2	0	0	0	0
2	I	2	0	0	0	0
2	J	2	0	0	0	0
2	K	2	0	0	0	0
2	L	2	0	0	0	0
3	A	4	0	0	1	0
3	B	4	0	0	0	0
3	C	4	0	0	1	0
3	D	4	0	0	0	0
3	E	4	0	0	1	0
3	F	4	0	0	0	0
3	G	4	0	0	0	0
3	H	4	0	0	1	0
3	I	4	0	0	0	0
3	J	4	0	0	0	0
3	K	4	0	0	0	0
3	L	4	0	0	0	0
4	A	20	0	23	4	0
4	C	17	0	18	13	0
4	E	18	0	21	2	0
4	F	7	0	6	0	0
4	G	23	0	27	9	0
4	H	10	0	12	0	0
4	K	12	0	14	0	0

Continued on next page...

Continued from previous page...

Mol	Chain	Non-H	H(model)	H(added)	Clashes	Symm-Clashes
5	A	26	0	16	4	0
5	B	26	0	16	4	0
5	C	26	0	16	3	0
5	D	26	0	16	1	0
5	E	26	0	16	5	0
5	F	26	0	16	6	0
5	G	26	0	16	3	0
5	H	26	0	16	3	0
5	I	26	0	16	3	0
5	J	26	0	16	4	0
5	K	26	0	16	4	0
5	L	26	0	16	3	0
6	B	5	0	0	3	0
6	C	5	0	0	0	0
6	E	5	0	0	1	0
6	G	10	0	0	3	0
6	J	5	0	0	1	0
6	K	5	0	0	0	0
6	L	5	0	0	2	0
7	K	4	6	6	0	0
8	A	26	0	0	2	0
8	B	22	0	0	1	0
8	C	17	0	0	1	0
8	D	28	0	0	0	0
8	E	23	0	0	0	0
8	F	24	0	0	1	0
8	G	17	0	0	0	0
8	H	13	0	0	0	0
8	I	11	0	0	1	0
8	J	14	0	0	0	0
8	K	13	0	0	0	0
8	L	10	0	0	2	0
All	All	47470	6	45815	1181	1

The all-atom clashscore is defined as the number of clashes found per 1000 atoms (including hydrogen atoms). The all-atom clashscore for this structure is 13.

All (1181) close contacts within the same asymmetric unit are listed below, sorted by their clash magnitude.

Atom-1	Atom-2	Interatomic distance (Å)	Clash overlap (Å)
1:J:124:GLU:HG3	1:J:125:GLU:H	1.22	1.03

Continued on next page...

Continued from previous page...

Atom-1	Atom-2	Interatomic distance (Å)	Clash overlap (Å)
1:F:127:LEU:HD21	1:F:213:MET:HE2	1.44	0.97
1:L:423:ILE:HD11	1:L:600:VAL:HG11	1.51	0.90
1:G:357:LEU:HB2	1:G:425:PHE:HB2	1.56	0.87
1:B:340:ALA:HA	1:B:445:ILE:HD12	1.56	0.87
1:G:232:LYS:HE2	1:G:276:THR:HB	1.59	0.85
1:C:124:GLU:HG3	1:C:125:GLU:H	1.41	0.84
1:L:365:VAL:HA	1:L:420:ASN:HA	1.58	0.84
1:I:214:LEU:HD21	1:I:222:LEU:HD22	1.58	0.84
1:E:340:ALA:HA	1:E:445:ILE:HD12	1.60	0.82
1:A:388:ALA:HB3	4:A:1004:1PE:H152	1.61	0.82
1:G:275:ASP:HA	1:G:278:LYS:HG3	1.60	0.81
1:C:340:ALA:HA	1:C:445:ILE:HD12	1.62	0.81
1:J:198:LEU:HD22	1:J:202:ASP:HB3	1.64	0.80
1:L:132:VAL:HG21	1:L:142:VAL:HG13	1.64	0.80
1:C:238:PHE:HD2	1:C:239:LEU:HD12	1.48	0.78
1:J:132:VAL:HG21	1:J:142:VAL:HG13	1.64	0.78
1:F:340:ALA:HA	1:F:445:ILE:HD12	1.66	0.78
1:F:231:ASP:OD1	1:F:232:LYS:N	2.16	0.77
1:E:207:VAL:HG11	1:E:241:THR:HG22	1.66	0.77
1:J:124:GLU:CG	1:J:125:GLU:H	1.98	0.77
1:C:123:VAL:HG21	1:C:153:VAL:HG11	1.66	0.76
1:J:121:CYS:HB2	1:J:148:VAL:HG12	1.67	0.76
1:F:132:VAL:HG21	1:F:142:VAL:HG13	1.67	0.76
1:K:230:VAL:HG12	1:K:234:LEU:HD23	1.67	0.76
1:D:114:VAL:HG12	1:D:274:ALA:HB1	1.66	0.75
1:J:141:PRO:HB3	1:J:163:GLU:HG2	1.68	0.75
1:L:386:LYS:HE3	1:L:396:MET:HG3	1.68	0.75
1:H:340:ALA:HA	1:H:445:ILE:HD12	1.69	0.74
1:E:238:PHE:HD2	1:E:239:LEU:HD12	1.53	0.74
1:A:374:LYS:CE	1:A:376:ILE:HD13	2.18	0.74
1:C:411:TYR:HE1	4:C:1005:1PE:H241	1.53	0.74
1:L:121:CYS:HB2	1:L:148:VAL:HG12	1.70	0.74
1:G:132:VAL:HG11	1:G:144:ILE:HD13	1.69	0.73
1:G:198:LEU:HD11	1:G:202:ASP:CB	2.19	0.73
1:A:129:ILE:HD12	1:A:213:MET:HE1	1.71	0.73
1:D:230:VAL:HG12	1:D:234:LEU:HD23	1.71	0.73
1:E:148:VAL:HG21	1:E:157:LEU:HD12	1.71	0.73
1:G:320:LYS:HE2	4:G:1007:1PE:H132	1.70	0.72
1:E:379:ASP:OD2	5:E:1007:3MW:O17	2.07	0.72
1:A:340:ALA:HA	1:A:445:ILE:HD12	1.70	0.72
1:J:392:MET:CE	5:J:1005:3MW:H1	2.18	0.72

Continued on next page...

Continued from previous page...

Atom-1	Atom-2	Interatomic distance (Å)	Clash overlap (Å)
1:A:214:LEU:HD21	1:A:222:LEU:HD22	1.70	0.72
1:L:190:VAL:HG11	1:L:206:VAL:HG13	1.72	0.72
1:H:335:GLU:OE2	1:H:335:GLU:CG	2.38	0.72
1:F:236:ARG:NH2	1:F:519:THR:O	2.23	0.72
1:F:127:LEU:HD21	1:F:213:MET:CE	2.20	0.71
1:L:196:ALA:O	1:L:198:LEU:HD12	1.89	0.71
1:I:328:LEU:HB2	1:I:354:PHE:HB3	1.70	0.71
1:H:335:GLU:CG	1:H:335:GLU:OE1	2.38	0.71
1:A:374:LYS:HE3	1:A:376:ILE:HD13	1.72	0.71
1:J:452:THR:HG22	1:J:542:ALA:HB1	1.72	0.71
1:J:132:VAL:HG11	1:J:144:ILE:HD13	1.71	0.71
1:I:238:PHE:HD2	1:I:239:LEU:HD12	1.55	0.71
1:D:326:LYS:HE3	1:D:328:LEU:HD11	1.72	0.71
1:J:423:ILE:HD11	1:J:600:VAL:HG11	1.71	0.71
1:L:144:ILE:CD1	1:L:157:LEU:HD22	2.21	0.71
1:D:338:MET:HE2	1:D:468:ASP:HB3	1.72	0.71
1:C:326:LYS:HE3	1:C:328:LEU:HD11	1.72	0.71
1:K:548:SER:OG	1:K:551:VAL:HG12	1.91	0.71
1:L:329:GLY:N	1:L:332:GLU:OE1	2.22	0.71
1:K:340:ALA:HA	1:K:445:ILE:HD12	1.72	0.71
1:D:124:GLU:HG3	1:D:125:GLU:H	1.54	0.71
1:L:392:MET:CE	5:L:1005:3MW:H1	2.21	0.71
1:G:340:ALA:HA	1:G:445:ILE:HD12	1.72	0.70
1:I:487:LEU:O	5:I:1004:3MW:H9	1.91	0.70
1:B:335:GLU:OE2	1:B:335:GLU:CG	2.39	0.70
1:L:413:VAL:HG11	1:L:423:ILE:HD12	1.71	0.70
1:A:231:ASP:OD1	1:A:234:LEU:N	2.19	0.70
1:C:367:LYS:HG3	1:C:603:ASP:OD2	1.91	0.70
1:H:135:PRO:HA	1:H:194:SER:O	1.90	0.70
1:B:335:GLU:OE1	1:B:335:GLU:CG	2.40	0.70
1:E:536:THR:HG21	1:E:551:VAL:HG23	1.75	0.69
1:A:364:ASP:O	1:A:366:LYS:HG3	1.92	0.69
1:G:441:PRO:HB2	1:H:394:ASP:HA	1.74	0.69
1:F:321:LEU:O	1:F:322:ASN:HB2	1.92	0.69
1:K:196:ALA:O	1:K:198:LEU:HD12	1.92	0.69
6:G:1004:SO4:O4	1:I:436:LYS:NZ	2.25	0.69
1:H:231:ASP:OD2	1:H:232:LYS:N	2.25	0.68
1:F:236:ARG:HH22	1:F:520:SER:HA	1.57	0.68
1:D:413:VAL:HG11	1:D:423:ILE:HD12	1.74	0.68
1:L:392:MET:HE1	5:L:1005:3MW:H1	1.73	0.68
1:J:394:ASP:HA	1:L:441:PRO:HB2	1.76	0.68

Continued on next page...

Continued from previous page...

Atom-1	Atom-2	Interatomic distance (Å)	Clash overlap (Å)
1:C:236:ARG:NE	1:C:240:GLU:OE2	2.25	0.67
1:J:138:GLU:O	1:J:140:GLY:N	2.27	0.67
1:G:364:ASP:O	1:G:366:LYS:HG3	1.93	0.67
1:A:114:VAL:HG12	1:A:274:ALA:HB1	1.77	0.67
1:A:129:ILE:CD1	1:A:213:MET:HE1	2.25	0.67
1:I:196:ALA:O	1:I:198:LEU:HD12	1.94	0.67
1:C:423:ILE:HD11	1:C:600:VAL:HG11	1.77	0.67
1:J:321:LEU:HD11	1:J:411:TYR:HA	1.77	0.67
1:J:340:ALA:HA	1:J:445:ILE:HD12	1.77	0.67
1:L:423:ILE:HD11	1:L:600:VAL:CG1	2.23	0.67
1:G:320:LYS:CE	4:G:1007:1PE:H132	2.25	0.67
1:C:321:LEU:O	1:C:322:ASN:HB2	1.95	0.66
1:G:321:LEU:O	1:G:322:ASN:HB2	1.96	0.66
1:B:117:ILE:HD11	1:B:146:SER:OG	1.95	0.66
1:H:368:LYS:HG2	1:H:422:GLU:HB3	1.77	0.66
1:K:374:LYS:CE	1:K:376:ILE:HD13	2.26	0.66
1:J:488:THR:HG21	1:J:555:SER:HA	1.78	0.66
1:B:423:ILE:HD11	1:B:600:VAL:HG11	1.78	0.66
1:J:254:SER:OG	1:L:543:ASP:OD2	2.12	0.66
1:J:341:TYR:CE1	1:J:428:ALA:HB1	2.31	0.66
1:K:150:ASP:OD1	1:K:179:ASN:HB2	1.96	0.66
1:C:178:PHE:HZ	1:E:155:GLU:HG2	1.60	0.66
1:G:198:LEU:HD11	1:G:202:ASP:HB2	1.77	0.65
1:K:232:LYS:HE2	1:K:276:THR:HB	1.78	0.65
1:I:548:SER:OG	1:I:551:VAL:HG12	1.96	0.65
1:A:367:LYS:HG2	1:A:603:ASP:OD2	1.95	0.65
1:C:199:SER:OG	1:C:200:GLU:N	2.27	0.65
1:L:500:ALA:HB2	1:L:579:VAL:HG21	1.77	0.65
1:F:379:ASP:OD2	5:F:1005:3MW:O17	2.14	0.65
1:C:198:LEU:HD11	1:C:202:ASP:HB3	1.78	0.65
1:A:489:GLY:HA3	4:A:1004:1PE:H222	1.77	0.65
1:D:204:LYS:O	1:D:208:LEU:HD13	1.96	0.65
1:D:152:GLN:HG2	1:D:180:ASP:OD1	1.95	0.65
1:J:214:LEU:HD21	1:J:222:LEU:HD22	1.78	0.65
1:I:161:ASN:O	1:I:164:LYS:NZ	2.28	0.65
1:F:116:ASP:HA	1:F:271:ILE:O	1.97	0.65
1:L:488:THR:HG21	1:L:555:SER:HA	1.79	0.65
1:C:150:ASP:OD2	1:C:179:ASN:HB2	1.97	0.65
1:L:423:ILE:CD1	1:L:600:VAL:HG11	2.27	0.65
1:L:338:MET:CE	1:L:468:ASP:HB3	2.26	0.65
1:J:124:GLU:HG3	1:J:125:GLU:N	2.03	0.64

Continued on next page...

Continued from previous page...

Atom-1	Atom-2	Interatomic distance (Å)	Clash overlap (Å)
1:A:230:VAL:HG12	1:A:234:LEU:HD23	1.79	0.64
1:C:530:ILE:HA	4:C:1006:1PE:H232	1.79	0.64
1:K:487:LEU:O	5:K:1006:3MW:H9	1.96	0.64
1:I:533:TYR:O	1:I:536:THR:HG22	1.98	0.64
1:C:531:ASN:H	4:C:1006:1PE:H132	1.62	0.64
1:H:528:PRO:HB3	1:K:525:TRP:CZ3	2.31	0.64
1:B:118:LYS:NZ	1:B:272:ASN:OD1	2.29	0.64
1:H:306:ASN:HB2	1:H:307:PRO:HD2	1.79	0.64
1:I:306:ASN:HB2	1:I:307:PRO:HD2	1.80	0.64
1:D:196:ALA:O	1:D:198:LEU:HD22	1.97	0.64
1:E:306:ASN:HB2	1:E:307:PRO:HD2	1.79	0.64
1:A:108:HIS:NE2	4:A:1005:1PE:H251	2.13	0.64
1:D:544:ILE:HD12	1:D:564:GLU:HG3	1.80	0.64
1:J:392:MET:HE1	5:J:1005:3MW:H1	1.80	0.64
1:H:221:LYS:HD3	1:H:266:HIS:HB2	1.79	0.64
1:C:413:VAL:HG11	1:C:423:ILE:HD12	1.80	0.63
1:B:236:ARG:NE	1:B:240:GLU:OE2	2.22	0.63
1:J:328:LEU:HB2	1:J:354:PHE:HB3	1.79	0.63
1:J:198:LEU:HD12	1:J:228:ILE:HD12	1.80	0.63
1:J:306:ASN:HB2	1:J:307:PRO:HD2	1.81	0.63
1:E:118:LYS:NZ	1:E:272:ASN:OD1	2.32	0.63
1:D:357:LEU:HB2	1:D:425:PHE:HB2	1.80	0.63
1:A:328:LEU:HB2	1:A:354:PHE:HB3	1.81	0.63
1:B:199:SER:OG	1:B:200:GLU:N	2.31	0.63
1:E:488:THR:HG21	1:E:555:SER:HA	1.81	0.63
1:B:306:ASN:HB2	1:B:307:PRO:HD2	1.81	0.63
1:K:214:LEU:HD11	1:K:222:LEU:HD22	1.81	0.62
1:C:531:ASN:H	4:C:1006:1PE:H231	1.65	0.62
1:J:135:PRO:HA	1:J:194:SER:O	2.00	0.62
1:C:207:VAL:HG11	1:C:241:THR:HG22	1.82	0.62
1:I:123:VAL:HG21	1:I:153:VAL:HG11	1.80	0.62
1:K:306:ASN:HB2	1:K:307:PRO:HD2	1.80	0.62
1:D:306:ASN:HB2	1:D:307:PRO:HD2	1.82	0.62
1:C:531:ASN:H	4:C:1006:1PE:C23	2.12	0.62
1:K:392:MET:CE	5:K:1006:3MW:H1	2.30	0.62
1:L:104:ASN:N	6:L:1004:SO4:O4	2.26	0.62
1:L:321:LEU:HD11	1:L:411:TYR:HA	1.80	0.62
1:F:204:LYS:O	1:F:208:LEU:HD13	1.99	0.62
1:B:436:LYS:NZ	6:B:1004:SO4:O4	2.33	0.62
1:J:142:VAL:HG22	1:J:167:VAL:HG12	1.80	0.61
1:E:372:VAL:O	1:E:483:ASP:HA	2.00	0.61

Continued on next page...

Continued from previous page...

Atom-1	Atom-2	Interatomic distance (Å)	Clash overlap (Å)
1:E:392:MET:CE	5:E:1007:3MW:H16	2.30	0.61
1:G:198:LEU:HD11	1:G:202:ASP:HB3	1.81	0.61
1:H:525:TRP:CZ3	1:K:528:PRO:HB3	2.35	0.61
1:C:230:VAL:HG12	1:C:234:LEU:HD23	1.81	0.61
1:G:306:ASN:HB2	1:G:307:PRO:HD2	1.81	0.61
1:J:392:MET:HE3	5:J:1005:3MW:H1	1.82	0.61
1:K:374:LYS:HE3	1:K:376:ILE:HD13	1.83	0.61
1:K:158:LYS:HG2	1:K:160:GLU:OE1	2.00	0.61
1:I:551:VAL:CG1	1:I:557:VAL:HG21	2.30	0.61
1:E:441:PRO:HB2	1:F:394:ASP:HA	1.83	0.61
1:G:214:LEU:HD21	1:G:222:LEU:HD22	1.83	0.61
1:A:306:ASN:HB2	1:A:307:PRO:HD2	1.81	0.61
1:D:340:ALA:HA	1:D:445:ILE:HD12	1.81	0.61
1:C:306:ASN:HB2	1:C:307:PRO:HD2	1.83	0.61
1:G:324:GLU:HB2	1:G:358:THR:HB	1.82	0.61
1:H:117:ILE:CD1	1:H:146:SER:HB3	2.30	0.61
1:F:487:LEU:O	5:F:1005:3MW:H9	2.01	0.61
1:F:413:VAL:HG11	1:F:423:ILE:HD12	1.82	0.61
1:H:328:LEU:HB2	1:H:354:PHE:HB3	1.82	0.61
1:C:411:TYR:CE1	4:C:1005:1PE:H241	2.33	0.60
1:H:137:LYS:O	1:H:194:SER:OG	2.08	0.60
1:A:150:ASP:OD1	1:A:179:ASN:HB2	2.00	0.60
1:A:178:PHE:HZ	1:D:155:GLU:HG2	1.64	0.60
1:J:150:ASP:OD1	1:J:179:ASN:HB2	2.01	0.60
1:H:335:GLU:OE2	1:H:335:GLU:OE1	2.20	0.60
1:B:413:VAL:HG11	1:B:423:ILE:HD12	1.83	0.60
1:H:346:LYS:HE3	1:I:91:VAL:HB	1.84	0.60
1:H:338:MET:CE	1:H:468:ASP:HB3	2.31	0.60
1:C:531:ASN:N	4:C:1006:1PE:H132	2.17	0.60
1:K:372:VAL:O	1:K:483:ASP:HA	2.01	0.60
1:J:423:ILE:HD11	1:J:600:VAL:CG1	2.32	0.60
1:B:335:GLU:OE1	1:B:335:GLU:OE2	2.19	0.60
1:A:315:VAL:HG13	1:A:325:TYR:CE1	2.37	0.60
1:B:498:SER:O	1:B:523:PRO:HG2	2.02	0.60
1:K:160:GLU:OE1	1:K:160:GLU:N	2.34	0.60
1:A:326:LYS:HE2	1:A:328:LEU:HD11	1.83	0.60
1:B:165:PHE:HB3	1:B:189:TYR:OH	2.02	0.60
1:I:551:VAL:HG11	1:I:557:VAL:CG2	2.32	0.59
1:H:106:PRO:HD2	1:H:247:MET:SD	2.42	0.59
1:K:124:GLU:O	1:K:185:VAL:HG12	2.02	0.59
1:G:150:ASP:OD2	1:G:153:VAL:HG23	2.02	0.59

Continued on next page...

Continued from previous page...

Atom-1	Atom-2	Interatomic distance (Å)	Clash overlap (Å)
1:D:94:LEU:HD12	1:F:342:LEU:HD12	1.84	0.59
1:C:214:LEU:HD21	1:C:222:LEU:HD22	1.84	0.59
1:L:306:ASN:HB2	1:L:307:PRO:HD2	1.83	0.59
1:F:548:SER:OG	1:F:551:VAL:HG12	2.03	0.59
1:F:327:ILE:N	1:F:327:ILE:HD12	2.16	0.59
1:A:253:LYS:HB3	1:A:256:ASP:O	2.02	0.59
1:L:151:LYS:O	1:L:153:VAL:N	2.35	0.59
1:C:238:PHE:CD2	1:C:239:LEU:HD12	2.35	0.59
1:J:141:PRO:CB	1:J:163:GLU:HG2	2.32	0.59
1:E:124:GLU:O	1:E:185:VAL:HG12	2.03	0.59
1:D:394:ASP:HA	1:F:441:PRO:HB2	1.84	0.59
1:G:487:LEU:O	5:G:1008:3MW:H9	2.03	0.59
1:I:551:VAL:HG13	1:I:557:VAL:HG21	1.83	0.59
1:A:321:LEU:HD11	1:A:411:TYR:HA	1.85	0.59
1:H:117:ILE:C	1:H:119:GLY:H	2.07	0.58
1:H:175:PHE:N	1:H:187:VAL:O	2.33	0.58
1:E:160:GLU:OE1	1:E:160:GLU:N	2.34	0.58
1:H:460:ALA:O	1:H:546:GLN:NE2	2.35	0.58
1:H:372:VAL:O	1:H:483:ASP:HA	2.04	0.58
1:G:158:LYS:O	1:G:162:MET:HG2	2.03	0.58
1:E:231:ASP:OD1	1:E:234:LEU:N	2.24	0.58
1:H:533:TYR:HB2	1:H:560:LEU:HD11	1.84	0.58
1:C:423:ILE:CD1	1:C:600:VAL:HG11	2.34	0.58
1:I:150:ASP:OD2	1:I:153:VAL:HG23	2.03	0.58
1:I:235:PHE:O	1:I:239:LEU:HD13	2.03	0.58
1:K:392:MET:HE3	5:K:1006:3MW:H1	1.86	0.58
1:D:544:ILE:CD1	1:D:564:GLU:HG3	2.34	0.58
1:F:307:PRO:HA	1:F:429:VAL:HG11	1.85	0.58
1:G:493:TYR:CD2	1:L:552:LYS:HG3	2.38	0.58
1:E:321:LEU:HD11	1:E:411:TYR:HA	1.85	0.58
1:J:152:GLN:HG2	1:J:180:ASP:OD1	2.02	0.58
1:I:551:VAL:HG22	1:I:553:ALA:H	1.68	0.58
1:B:441:PRO:HB2	1:C:394:ASP:HA	1.84	0.58
1:K:321:LEU:HD11	1:K:411:TYR:HA	1.84	0.58
1:C:196:ALA:O	1:C:198:LEU:N	2.37	0.58
1:I:174:HIS:CE1	1:I:213:MET:HG2	2.39	0.58
1:I:341:TYR:OH	1:I:429:VAL:O	2.20	0.58
1:J:364:ASP:O	1:J:366:LYS:HG3	2.04	0.58
1:L:236:ARG:NE	1:L:240:GLU:OE2	2.30	0.58
1:F:307:PRO:HA	1:F:429:VAL:CG1	2.33	0.58
1:A:378:PHE:CZ	1:C:441:PRO:HD2	2.39	0.58

Continued on next page...

Continued from previous page...

Atom-1	Atom-2	Interatomic distance (Å)	Clash overlap (Å)
1:H:307:PRO:HA	1:H:429:VAL:CG1	2.34	0.57
1:D:451:LYS:NZ	1:D:564:GLU:O	2.31	0.57
1:G:236:ARG:NE	1:G:240:GLU:OE2	2.35	0.57
1:F:357:LEU:HB2	1:F:425:PHE:HB2	1.86	0.57
1:F:372:VAL:O	1:F:483:ASP:HA	2.04	0.57
1:D:132:VAL:HG21	1:D:142:VAL:HG13	1.85	0.57
1:I:135:PRO:HA	1:I:194:SER:O	2.05	0.57
1:I:112:VAL:HG22	1:I:267:LEU:HB3	1.86	0.57
1:C:204:LYS:O	1:C:208:LEU:HD13	2.04	0.57
1:I:321:LEU:HD11	1:I:411:TYR:HA	1.85	0.57
1:D:124:GLU:HG3	1:D:125:GLU:N	2.20	0.57
1:H:117:ILE:HD11	1:H:146:SER:HB3	1.85	0.57
1:H:301:PRO:HB2	1:H:303:ASN:OD1	2.05	0.57
1:K:451:LYS:NZ	1:K:564:GLU:O	2.32	0.57
1:F:504:GLY:HA3	1:F:510:ILE:HD11	1.85	0.57
1:E:508:GLU:O	1:E:512:LYS:HG3	2.03	0.57
1:A:176:TYR:CD1	1:D:156:PHE:HD1	2.22	0.57
1:J:357:LEU:HB2	1:J:425:PHE:HB2	1.87	0.57
1:G:201:ALA:HA	1:G:204:LYS:HE2	1.87	0.57
4:C:1006:1PE:H142	1:D:201:ALA:HB2	1.85	0.57
1:K:118:LYS:HE3	1:K:272:ASN:OD1	2.05	0.57
1:L:150:ASP:OD1	1:L:179:ASN:HB2	2.05	0.57
1:K:161:ASN:O	1:K:164:LYS:HG2	2.04	0.57
1:L:364:ASP:N	8:L:1104:HOH:O	2.37	0.56
1:L:421:VAL:HG13	1:L:423:ILE:HG13	1.87	0.56
1:C:199:SER:HB3	1:C:202:ASP:OD2	2.04	0.56
1:E:306:ASN:HB2	1:E:307:PRO:CD	2.35	0.56
1:C:244:TYR:OH	1:C:588:PRO:O	2.23	0.56
1:E:380:SER:O	1:E:385:LEU:HD12	2.05	0.56
1:E:123:VAL:HG21	1:E:153:VAL:HG21	1.87	0.56
1:J:444:ILE:CG2	1:J:452:THR:HG23	2.36	0.56
1:D:199:SER:OG	1:D:200:GLU:N	2.37	0.56
1:G:307:PRO:N	1:G:377:THR:HG21	2.20	0.56
1:G:392:MET:CE	5:G:1008:3MW:H16	2.36	0.56
1:A:392:MET:CE	5:A:1006:3MW:H1	2.35	0.56
1:C:368:LYS:O	1:C:478:VAL:HG13	2.04	0.56
1:K:158:LYS:O	1:K:159:ASP:HB2	2.05	0.56
1:F:142:VAL:HG22	1:F:167:VAL:HG12	1.87	0.56
1:K:551:VAL:HG13	1:K:557:VAL:HG21	1.88	0.56
1:C:531:ASN:H	4:C:1006:1PE:C13	2.19	0.56
1:D:533:TYR:O	1:D:536:THR:HG22	2.05	0.56

Continued on next page...

Continued from previous page...

Atom-1	Atom-2	Interatomic distance (Å)	Clash overlap (Å)
1:G:361:SER:OG	1:G:419:GLU:HA	2.05	0.56
1:K:152:GLN:HG2	1:K:180:ASP:OD2	2.06	0.56
1:I:315:VAL:HG13	1:I:325:TYR:CE1	2.41	0.56
1:L:341:TYR:CE1	1:L:428:ALA:HB1	2.41	0.56
1:B:372:VAL:O	1:B:483:ASP:HA	2.06	0.56
1:L:106:PRO:HD2	1:L:247:MET:SD	2.46	0.56
1:D:338:MET:CE	1:D:468:ASP:HB3	2.34	0.56
1:I:164:LYS:HE2	1:I:165:PHE:CZ	2.40	0.56
1:J:514:LEU:O	1:J:518:LYS:HG2	2.06	0.56
1:F:306:ASN:HB2	1:F:307:PRO:HD2	1.87	0.56
1:G:490:ALA:HA	1:G:493:TYR:HD1	1.71	0.56
1:E:395:LEU:HD11	1:E:581:TRP:CG	2.41	0.56
1:D:418:PRO:HB3	1:D:601:LEU:HD23	1.86	0.56
1:D:253:LYS:O	1:D:254:SER:HB2	2.06	0.56
1:G:199:SER:OG	1:G:200:GLU:N	2.39	0.55
1:C:124:GLU:HG3	1:C:125:GLU:N	2.17	0.55
1:D:372:VAL:HG22	1:D:426:LEU:HD12	1.89	0.55
1:H:202:ASP:O	1:H:206:VAL:HG23	2.06	0.55
1:F:338:MET:HE2	1:F:468:ASP:HB3	1.88	0.55
1:B:392:MET:CE	5:B:1005:3MW:H16	2.37	0.55
1:L:190:VAL:CG1	1:L:206:VAL:HG13	2.37	0.55
1:H:306:ASN:HB2	1:H:307:PRO:CD	2.37	0.55
1:K:274:ALA:O	1:K:278:LYS:HG3	2.07	0.55
1:I:306:ASN:HB2	1:I:307:PRO:CD	2.37	0.55
1:A:321:LEU:CD1	1:A:411:TYR:HA	2.36	0.55
1:L:510:ILE:HD13	1:L:526:TRP:NE1	2.21	0.55
1:I:236:ARG:NE	1:I:240:GLU:OE2	2.32	0.55
1:H:451:LYS:NZ	1:H:564:GLU:O	2.38	0.55
1:C:487:LEU:O	5:C:1007:3MW:H9	2.06	0.55
1:E:123:VAL:HG11	1:E:153:VAL:HG21	1.89	0.55
1:C:135:PRO:HA	1:C:194:SER:O	2.07	0.55
1:J:423:ILE:CD1	1:J:600:VAL:HG11	2.36	0.55
1:E:225:VAL:HG22	1:E:270:TYR:HB2	1.87	0.55
1:J:395:LEU:HD11	1:J:581:TRP:CD2	2.42	0.55
1:K:306:ASN:HB2	1:K:307:PRO:CD	2.36	0.55
1:B:483:ASP:OD1	1:B:573:HIS:ND1	2.34	0.55
1:H:165:PHE:HB3	1:H:189:TYR:OH	2.07	0.55
1:F:392:MET:CE	5:F:1005:3MW:H16	2.37	0.55
1:B:306:ASN:HB2	1:B:307:PRO:CD	2.37	0.55
1:E:274:ALA:O	1:E:278:LYS:HG3	2.07	0.55
1:D:441:PRO:HD2	1:E:378:PHE:CZ	2.42	0.55

Continued on next page...

Continued from previous page...

Atom-1	Atom-2	Interatomic distance (Å)	Clash overlap (Å)
1:H:342:LEU:O	1:H:346:LYS:HG3	2.07	0.54
1:I:218:LYS:H	1:K:164:LYS:HB2	1.72	0.54
1:D:416:LEU:HD13	1:D:601:LEU:HD11	1.89	0.54
1:F:214:LEU:HD21	1:F:222:LEU:HD22	1.89	0.54
1:E:169:LEU:HD11	1:E:205:ARG:HB2	1.88	0.54
1:L:359:TYR:HE2	1:L:418:PRO:HG2	1.72	0.54
1:I:175:PHE:N	1:I:187:VAL:O	2.37	0.54
1:G:306:ASN:HB2	1:G:307:PRO:CD	2.37	0.54
1:A:306:ASN:HB2	1:A:307:PRO:CD	2.37	0.54
1:J:132:VAL:HG21	1:J:142:VAL:CG1	2.36	0.54
1:G:275:ASP:O	1:G:278:LYS:HE2	2.07	0.54
1:H:338:MET:HE3	1:H:468:ASP:HB3	1.89	0.54
1:E:321:LEU:CD1	1:E:411:TYR:HA	2.38	0.54
1:C:517:SER:HA	1:C:595:LEU:HD13	1.89	0.54
1:L:338:MET:HE2	1:L:468:ASP:HB3	1.88	0.54
1:D:148:VAL:HG21	1:D:157:LEU:HD12	1.89	0.54
1:C:175:PHE:N	1:C:187:VAL:O	2.38	0.54
1:F:222:LEU:O	1:F:267:LEU:HD12	2.08	0.54
1:C:372:VAL:O	1:C:483:ASP:HA	2.07	0.54
1:B:124:GLU:O	1:B:125:GLU:HG2	2.07	0.54
1:B:298:ILE:HA	1:B:400:MET:SD	2.47	0.54
1:B:134:ASN:HB3	1:B:167:VAL:HG21	1.90	0.54
1:E:204:LYS:O	1:E:208:LEU:HD13	2.07	0.54
1:I:528:PRO:HB3	1:J:525:TRP:CE3	2.43	0.54
1:B:528:PRO:HB3	1:E:525:TRP:CZ3	2.42	0.54
1:J:181:ASN:O	1:J:182:LYS:HB2	2.08	0.54
1:E:238:PHE:CD2	1:E:239:LEU:HD12	2.39	0.54
1:K:321:LEU:CD1	1:K:411:TYR:HA	2.38	0.54
1:J:488:THR:HA	5:J:1005:3MW:O20	2.08	0.54
1:A:341:TYR:CE1	1:A:428:ALA:HB1	2.42	0.54
1:J:544:ILE:HD12	1:J:564:GLU:HG3	1.90	0.54
1:J:460:ALA:O	1:J:546:GLN:NE2	2.41	0.54
1:H:157:LEU:HD21	1:H:187:VAL:HG11	1.89	0.54
1:J:338:MET:CE	1:J:468:ASP:HB3	2.37	0.54
1:H:374:LYS:HB2	1:H:485:ALA:CB	2.38	0.54
1:I:597:THR:HA	1:I:600:VAL:HG22	1.89	0.54
1:J:204:LYS:O	1:J:208:LEU:HD13	2.08	0.54
1:I:401:SER:HB2	1:I:486:THR:HG23	1.88	0.54
1:B:207:VAL:HG11	1:B:241:THR:HG22	1.89	0.54
1:A:483:ASP:OD1	1:A:573:HIS:ND1	2.34	0.54
1:H:487:LEU:O	5:H:1005:3MW:H9	2.08	0.54

Continued on next page...

Continued from previous page...

Atom-1	Atom-2	Interatomic distance (Å)	Clash overlap (Å)
1:L:338:MET:HE3	1:L:468:ASP:HB3	1.91	0.53
1:E:208:LEU:O	1:E:212:THR:HG23	2.08	0.53
1:J:306:ASN:HB2	1:J:307:PRO:CD	2.39	0.53
3:H:1002:CO3:O2	5:H:1005:3MW:N16	2.42	0.53
1:C:117:ILE:HD11	1:C:146:SER:OG	2.07	0.53
1:H:274:ALA:O	1:H:278:LYS:HG3	2.09	0.53
1:E:132:VAL:HG21	1:E:142:VAL:HG13	1.90	0.53
1:C:451:LYS:NZ	1:C:564:GLU:O	2.33	0.53
1:G:144:ILE:HG23	1:G:227:GLU:OE2	2.07	0.53
1:J:444:ILE:HG23	1:J:452:THR:HG23	1.91	0.53
1:C:198:LEU:HD11	1:C:202:ASP:CB	2.38	0.53
3:C:1002:CO3:O1	5:C:1007:3MW:N16	2.39	0.53
1:B:174:HIS:CE1	1:B:213:MET:HG2	2.44	0.53
1:K:181:ASN:O	1:K:182:LYS:HB2	2.08	0.53
1:J:132:VAL:HG11	1:J:144:ILE:CD1	2.39	0.53
1:A:306:ASN:C	1:A:377:THR:HG21	2.29	0.53
1:G:89:PRO:HG2	1:G:350:TYR:CD2	2.44	0.53
1:I:461:GLU:OE2	5:I:1004:3MW:O17	2.27	0.53
1:L:533:TYR:O	1:L:536:THR:HG22	2.09	0.53
1:A:550:SER:O	1:A:552:LYS:HD3	2.08	0.53
1:G:386:LYS:HE3	1:G:396:MET:HG3	1.89	0.53
1:B:123:VAL:O	1:B:123:VAL:HG12	2.09	0.53
1:B:423:ILE:HD11	1:B:600:VAL:CG1	2.38	0.53
1:F:338:MET:CE	1:F:468:ASP:HB3	2.38	0.53
1:I:217:ASN:OD1	1:I:219:LEU:HG	2.08	0.53
1:A:106:PRO:HD2	1:A:247:MET:SD	2.49	0.53
1:H:123:VAL:HG23	1:H:124:GLU:N	2.24	0.53
1:E:392:MET:HE3	5:E:1007:3MW:H16	1.90	0.53
1:C:209:SER:O	1:C:212:THR:OG1	2.24	0.53
1:E:463:ARG:N	3:E:1002:CO3:O1	2.34	0.53
1:B:321:LEU:HD11	1:B:411:TYR:HA	1.89	0.53
1:I:238:PHE:CD2	1:I:239:LEU:HD12	2.41	0.53
1:B:173:LYS:HB2	1:B:189:TYR:CE1	2.44	0.53
1:H:124:GLU:O	1:H:185:VAL:HG12	2.09	0.53
1:H:481:ILE:HG13	1:H:569:THR:HG21	1.91	0.53
1:E:549:SER:O	1:E:552:LYS:NZ	2.41	0.53
1:J:310:LEU:HD23	1:J:429:VAL:HG11	1.90	0.53
1:F:311:SER:OG	1:F:353:LYS:HB3	2.09	0.53
1:B:132:VAL:HG11	1:B:142:VAL:HG13	1.91	0.53
1:D:301:PRO:HB2	1:D:303:ASN:OD1	2.08	0.53
1:C:361:SER:HB3	1:C:419:GLU:HA	1.90	0.53

Continued on next page...

Continued from previous page...

Atom-1	Atom-2	Interatomic distance (Å)	Clash overlap (Å)
1:D:124:GLU:CG	1:D:125:GLU:H	2.22	0.52
1:B:301:PRO:HB2	1:B:303:ASN:OD1	2.09	0.52
1:K:360:LYS:HE2	1:K:422:GLU:OE1	2.08	0.52
1:F:223:THR:HA	1:F:268:GLY:O	2.09	0.52
1:L:306:ASN:HB2	1:L:307:PRO:CD	2.40	0.52
1:D:207:VAL:O	1:D:211:VAL:HG23	2.09	0.52
1:I:196:ALA:O	1:I:198:LEU:N	2.42	0.52
1:C:306:ASN:HB2	1:C:307:PRO:CD	2.40	0.52
1:C:399:ASP:OD1	1:C:486:THR:OG1	2.24	0.52
1:I:512:LYS:NZ	1:I:603:ASP:OD1	2.21	0.52
1:I:340:ALA:HA	1:I:445:ILE:HD12	1.92	0.52
1:C:423:ILE:HD11	1:C:600:VAL:CG1	2.38	0.52
1:D:306:ASN:HB2	1:D:307:PRO:CD	2.40	0.52
1:C:99:ILE:HD11	1:C:305:CYS:HA	1.91	0.52
1:K:338:MET:CE	1:K:468:ASP:HB3	2.39	0.52
1:B:134:ASN:CB	1:B:167:VAL:HG21	2.40	0.52
1:I:528:PRO:HB3	1:J:525:TRP:CZ3	2.45	0.52
1:F:315:VAL:HG13	1:F:325:TYR:CE1	2.45	0.52
1:B:207:VAL:O	1:B:211:VAL:HG23	2.10	0.52
1:E:395:LEU:HD11	1:E:581:TRP:CD2	2.45	0.52
1:E:217:ASN:HB3	1:E:219:LEU:HG	1.91	0.52
1:B:274:ALA:O	1:B:278:LYS:HG3	2.09	0.52
1:K:508:GLU:O	1:K:512:LYS:HG3	2.10	0.52
1:C:127:LEU:HD13	1:C:174:HIS:NE2	2.24	0.52
1:I:307:PRO:N	1:I:377:THR:HG21	2.24	0.52
1:J:487:LEU:HD22	1:J:573:HIS:CE1	2.45	0.52
1:A:551:VAL:HG22	8:F:1114:HOH:O	2.08	0.52
1:G:103:TYR:CB	4:G:1007:1PE:H131	2.40	0.51
1:C:236:ARG:HD2	1:C:283:LYS:HG2	1.92	0.51
1:K:376:ILE:HD12	1:K:376:ILE:N	2.25	0.51
1:A:123:VAL:HG21	1:A:153:VAL:HG11	1.92	0.51
1:K:386:LYS:HB3	1:K:391:SER:HB3	1.91	0.51
1:J:346:LYS:HE3	1:K:91:VAL:HB	1.91	0.51
1:G:320:LYS:HE3	4:G:1007:1PE:H241	1.92	0.51
1:J:394:ASP:HA	1:L:441:PRO:CB	2.40	0.51
1:H:307:PRO:HA	1:H:429:VAL:HG11	1.91	0.51
1:E:138:GLU:O	1:E:140:GLY:N	2.44	0.51
1:A:376:ILE:N	1:A:376:ILE:HD12	2.25	0.51
1:L:135:PRO:HA	1:L:194:SER:O	2.09	0.51
1:I:359:TYR:HE2	1:I:418:PRO:HG2	1.74	0.51
1:J:508:GLU:O	1:J:512:LYS:HG3	2.10	0.51

Continued on next page...

Continued from previous page...

Atom-1	Atom-2	Interatomic distance (Å)	Clash overlap (Å)
1:L:254:SER:OG	1:L:255:THR:HG23	2.10	0.51
1:A:546:GLN:N	8:A:1126:HOH:O	2.43	0.51
1:B:181:ASN:HD21	1:B:183:ASN:ND2	2.09	0.51
1:J:533:TYR:O	1:J:536:THR:HG22	2.10	0.51
1:D:416:LEU:CD1	1:D:601:LEU:HD11	2.40	0.51
1:G:254:SER:OG	1:G:255:THR:HG23	2.10	0.51
1:K:117:ILE:HD11	1:K:146:SER:OG	2.10	0.51
1:E:550:SER:O	1:E:552:LYS:HD3	2.11	0.51
1:J:374:LYS:HB2	1:J:485:ALA:CB	2.41	0.51
1:I:301:PRO:HB2	1:I:303:ASN:OD1	2.10	0.51
1:F:374:LYS:HB2	1:F:485:ALA:CB	2.41	0.51
1:D:244:TYR:CE1	1:D:291:THR:HG22	2.45	0.51
6:B:1004:SO4:O3	1:C:436:LYS:HG2	2.10	0.51
1:G:236:ARG:HD2	1:G:283:LYS:HG2	1.91	0.51
1:G:421:VAL:CG2	1:G:423:ILE:HD11	2.41	0.51
1:H:290:GLY:C	1:H:593:VAL:HG11	2.32	0.51
1:L:520:SER:HB3	1:L:598:GLU:HG3	1.93	0.51
1:A:451:LYS:NZ	1:A:564:GLU:O	2.40	0.51
1:H:117:ILE:HD12	1:H:225:VAL:HG13	1.92	0.50
1:B:487:LEU:O	5:B:1005:3MW:H9	2.11	0.50
1:A:333:LEU:HD22	1:A:338:MET:SD	2.51	0.50
1:D:91:VAL:HB	1:F:346:LYS:HE3	1.92	0.50
1:D:328:LEU:HB2	1:D:354:PHE:HB3	1.92	0.50
1:D:449:ASN:HD21	1:D:451:LYS:HD2	1.76	0.50
1:H:533:TYR:HB2	1:H:560:LEU:CD1	2.40	0.50
1:D:274:ALA:O	1:D:278:LYS:HG3	2.11	0.50
1:K:543:ASP:OD2	1:L:254:SER:OG	2.24	0.50
1:J:198:LEU:CD1	1:J:228:ILE:HD12	2.42	0.50
1:E:198:LEU:HD22	1:E:202:ASP:HB3	1.93	0.50
1:B:137:LYS:O	1:B:194:SER:HB3	2.12	0.50
1:H:221:LYS:HD3	1:H:266:HIS:CB	2.42	0.50
1:C:230:VAL:CG1	1:C:234:LEU:HD23	2.41	0.50
1:A:520:SER:HB3	1:A:598:GLU:HG3	1.94	0.50
1:H:357:LEU:HB2	1:H:425:PHE:HB2	1.94	0.50
1:B:355:ILE:CG2	1:B:357:LEU:HD13	2.42	0.50
1:A:192:CYS:HB3	1:A:198:LEU:HD11	1.94	0.50
1:L:365:VAL:HG23	8:L:1104:HOH:O	2.11	0.50
1:G:230:VAL:HG12	1:G:234:LEU:HD23	1.92	0.50
1:E:506:ASN:O	1:E:510:ILE:HG13	2.12	0.50
1:A:108:HIS:CD2	4:A:1005:1PE:H251	2.46	0.50
1:K:214:LEU:HD21	1:K:222:LEU:HD22	1.93	0.50

Continued on next page...

Continued from previous page...

Atom-1	Atom-2	Interatomic distance (Å)	Clash overlap (Å)
1:L:321:LEU:CD1	1:L:411:TYR:HA	2.41	0.50
1:I:374:LYS:HB2	1:I:485:ALA:CB	2.41	0.50
1:C:274:ALA:O	1:C:278:LYS:HG3	2.12	0.50
1:F:392:MET:HE1	5:F:1005:3MW:H16	1.94	0.50
1:L:232:LYS:HG2	1:L:277:TYR:CD1	2.46	0.50
1:B:287:TYR:CE1	1:B:597:THR:HG21	2.47	0.50
1:G:320:LYS:CE	4:G:1007:1PE:H241	2.42	0.50
1:D:200:GLU:HG2	1:D:201:ALA:N	2.26	0.50
1:C:386:LYS:HE3	1:C:396:MET:HG3	1.94	0.50
1:C:144:ILE:HG23	1:C:227:GLU:OE2	2.12	0.50
1:G:94:LEU:HD12	1:I:342:LEU:HD12	1.93	0.50
1:I:406:VAL:CG1	1:I:425:PHE:HB3	2.42	0.49
1:J:287:TYR:CE1	1:J:597:THR:HG21	2.47	0.49
1:J:165:PHE:CD2	1:J:173:LYS:HG3	2.47	0.49
1:E:416:LEU:CD1	1:E:601:LEU:HD21	2.42	0.49
1:F:271:ILE:HD13	1:F:277:TYR:CE2	2.47	0.49
1:I:307:PRO:CD	1:I:377:THR:HG21	2.41	0.49
1:C:370:ALA:HB2	1:C:478:VAL:HG21	1.94	0.49
1:G:528:PRO:HD3	1:L:525:TRP:NE1	2.27	0.49
1:J:520:SER:HB3	1:J:598:GLU:HG3	1.94	0.49
1:B:225:VAL:HG22	1:B:270:TYR:HB2	1.95	0.49
1:D:341:TYR:CE1	1:D:428:ALA:HB1	2.46	0.49
1:K:328:LEU:HB2	1:K:354:PHE:HB3	1.95	0.49
1:E:320:LYS:NZ	4:E:1006:1PE:OH6	2.39	0.49
1:B:341:TYR:CE1	1:B:428:ALA:HB1	2.47	0.49
1:E:301:PRO:HB2	1:E:303:ASN:OD1	2.12	0.49
1:K:361:SER:HB2	1:K:421:VAL:H	1.76	0.49
1:A:487:LEU:O	5:A:1006:3MW:H9	2.13	0.49
1:A:372:VAL:O	1:A:483:ASP:HA	2.13	0.49
1:D:150:ASP:OD1	1:D:179:ASN:HB2	2.13	0.49
1:G:383:TYR:HE2	1:G:438:SER:HB2	1.77	0.49
1:B:326:LYS:HE3	1:B:328:LEU:HD11	1.94	0.49
1:L:481:ILE:HG13	1:L:569:THR:HG21	1.95	0.49
1:J:142:VAL:HG22	1:J:167:VAL:CG1	2.43	0.49
1:G:316:GLU:HG3	4:G:1007:1PE:H262	1.94	0.49
1:J:413:VAL:HG11	1:J:423:ILE:HD12	1.93	0.49
1:E:116:ASP:OD2	1:E:118:LYS:NZ	2.45	0.49
1:D:418:PRO:HB3	1:D:601:LEU:CD2	2.43	0.49
1:C:301:PRO:HB2	1:C:303:ASN:OD1	2.12	0.49
1:J:123:VAL:HG21	1:J:153:VAL:HG11	1.95	0.49
1:I:134:ASN:ND2	1:I:141:PRO:HD2	2.28	0.49

Continued on next page...

Continued from previous page...

Atom-1	Atom-2	Interatomic distance (Å)	Clash overlap (Å)
1:C:289:PHE:O	1:C:293:TYR:N	2.36	0.49
1:A:330:VAL:HG23	8:A:1121:HOH:O	2.13	0.49
1:A:175:PHE:N	1:A:187:VAL:O	2.40	0.49
1:D:181:ASN:O	1:D:182:LYS:HB2	2.13	0.49
1:K:158:LYS:HD2	1:K:160:GLU:HB2	1.95	0.49
1:I:548:SER:CB	1:I:551:VAL:HG12	2.43	0.49
1:L:481:ILE:O	1:L:571:TRP:HA	2.12	0.49
1:J:99:ILE:HG12	1:J:305:CYS:HA	1.94	0.49
1:F:306:ASN:HB2	1:F:307:PRO:CD	2.43	0.49
1:H:500:ALA:HB3	1:H:524:VAL:HG22	1.95	0.49
1:H:361:SER:OG	1:H:418:PRO:O	2.21	0.49
1:L:112:VAL:HG22	1:L:267:LEU:HB3	1.94	0.49
1:K:483:ASP:OD2	1:K:573:HIS:ND1	2.40	0.48
1:F:326:LYS:C	1:F:327:ILE:HD12	2.33	0.48
1:I:406:VAL:HG12	1:I:425:PHE:HB3	1.95	0.48
1:E:316:GLU:O	1:E:320:LYS:HG3	2.13	0.48
1:A:504:GLY:HA3	1:A:510:ILE:HD11	1.94	0.48
1:C:406:VAL:CG1	1:C:425:PHE:HB3	2.43	0.48
1:G:328:LEU:HB2	1:G:354:PHE:HB3	1.95	0.48
1:D:210:LEU:HD12	1:D:213:MET:HE3	1.94	0.48
1:D:123:VAL:O	1:D:123:VAL:HG12	2.13	0.48
1:E:235:PHE:O	1:E:239:LEU:HD13	2.12	0.48
1:I:244:TYR:OH	1:I:588:PRO:O	2.27	0.48
1:J:510:ILE:HD13	1:J:526:TRP:NE1	2.28	0.48
1:A:581:TRP:CZ3	1:A:588:PRO:HG3	2.48	0.48
1:J:124:GLU:CG	1:J:125:GLU:N	2.69	0.48
1:H:298:ILE:HG23	1:H:398:PHE:HA	1.96	0.48
1:K:236:ARG:HG3	1:K:284:ALA:HB2	1.95	0.48
1:K:355:ILE:CG2	1:K:357:LEU:HD13	2.43	0.48
1:E:457:ASN:HB2	1:E:547:ILE:HD13	1.94	0.48
1:A:533:TYR:OH	1:F:495:LEU:O	2.21	0.48
1:K:500:ALA:HB2	1:K:579:VAL:HG21	1.95	0.48
1:K:158:LYS:O	1:K:158:LYS:HG2	2.13	0.48
1:A:392:MET:HE1	5:A:1006:3MW:H1	1.95	0.48
1:A:324:GLU:HB2	1:A:358:THR:HB	1.96	0.48
1:K:380:SER:O	1:K:385:LEU:HD12	2.13	0.48
1:A:117:ILE:HB	1:A:272:ASN:OD1	2.13	0.48
1:A:174:HIS:NE2	1:A:213:MET:HG2	2.29	0.48
1:A:307:PRO:N	1:A:377:THR:HG21	2.27	0.48
1:I:467:ALA:HB1	1:I:565:PHE:CE1	2.48	0.48
1:C:530:ILE:HA	4:C:1006:1PE:C23	2.41	0.48

Continued on next page...

Continued from previous page...

Atom-1	Atom-2	Interatomic distance (Å)	Clash overlap (Å)
1:J:232:LYS:HE2	1:J:280:GLU:OE2	2.13	0.48
1:E:230:VAL:HG12	1:E:234:LEU:HD23	1.95	0.48
1:H:127:LEU:HD11	1:H:129:ILE:HD11	1.96	0.48
1:C:282:GLU:O	1:C:286:VAL:HG23	2.14	0.48
1:G:174:HIS:HB3	1:J:175:PHE:CD2	2.48	0.48
1:J:457:ASN:HB2	1:J:547:ILE:HD13	1.96	0.48
1:J:274:ALA:O	1:J:278:LYS:HG3	2.14	0.48
1:F:327:ILE:CG2	1:F:353:LYS:HG3	2.44	0.48
1:G:392:MET:HE3	5:G:1008:3MW:H16	1.96	0.48
1:D:372:VAL:O	1:D:483:ASP:HA	2.14	0.48
1:I:498:SER:O	1:I:523:PRO:HG2	2.14	0.48
1:I:551:VAL:CG1	1:I:557:VAL:CG2	2.91	0.48
1:F:506:ASN:O	1:F:510:ILE:HG12	2.14	0.48
1:B:232:LYS:HE3	1:B:276:THR:O	2.13	0.48
1:E:162:MET:HE1	1:E:165:PHE:HE1	1.79	0.48
1:L:144:ILE:HG23	1:L:227:GLU:OE2	2.14	0.47
1:J:321:LEU:CD1	1:J:411:TYR:HA	2.42	0.47
1:B:423:ILE:CD1	1:B:600:VAL:HG11	2.41	0.47
1:H:525:TRP:CE3	1:K:528:PRO:HB3	2.49	0.47
1:E:123:VAL:HG22	1:E:123:VAL:O	2.14	0.47
1:B:144:ILE:HG23	1:B:227:GLU:OE2	2.13	0.47
1:G:175:PHE:N	1:G:187:VAL:O	2.43	0.47
1:L:374:LYS:HB2	1:L:485:ALA:CB	2.43	0.47
1:F:236:ARG:HD2	1:F:240:GLU:OE2	2.14	0.47
1:K:374:LYS:HB2	1:K:485:ALA:CB	2.44	0.47
1:G:342:LEU:HD12	1:H:94:LEU:HD12	1.97	0.47
1:K:581:TRP:CZ3	1:K:588:PRO:HG3	2.50	0.47
1:B:374:LYS:HB2	1:B:485:ALA:HB2	1.97	0.47
1:D:321:LEU:HD11	1:D:411:TYR:HA	1.96	0.47
1:A:94:LEU:HD12	1:C:342:LEU:HD12	1.95	0.47
1:F:112:VAL:HG22	1:F:267:LEU:HB3	1.96	0.47
1:F:118:LYS:N	1:F:272:ASN:OD1	2.48	0.47
1:C:232:LYS:HE2	1:C:280:GLU:OE2	2.14	0.47
1:A:121:CYS:HA	1:A:270:TYR:CE2	2.50	0.47
1:A:127:LEU:HD21	1:A:129:ILE:HD11	1.96	0.47
1:G:316:GLU:OE2	4:G:1007:1PE:H152	2.14	0.47
1:J:338:MET:HE2	1:J:468:ASP:HB3	1.96	0.47
1:G:129:ILE:CD1	1:G:213:MET:HE1	2.44	0.47
1:K:414:GLY:O	1:K:417:LYS:HE2	2.15	0.47
1:D:328:LEU:HD12	1:D:328:LEU:N	2.29	0.47
6:E:1004:SO4:O4	1:F:436:LYS:HG2	2.14	0.47

Continued on next page...

Continued from previous page...

Atom-1	Atom-2	Interatomic distance (Å)	Clash overlap (Å)
1:J:207:VAL:O	1:J:211:VAL:HG23	2.15	0.47
1:J:451:LYS:HE3	1:J:564:GLU:O	2.15	0.47
1:H:488:THR:HG21	1:H:555:SER:HA	1.96	0.47
1:G:500:ALA:HB3	1:G:524:VAL:HG22	1.97	0.47
1:C:328:LEU:HD12	1:C:328:LEU:N	2.29	0.47
1:G:123:VAL:O	1:G:123:VAL:HG12	2.14	0.47
1:H:374:LYS:HB2	1:H:485:ALA:HB2	1.97	0.47
1:F:386:LYS:HE3	1:F:396:MET:HG3	1.97	0.47
1:K:88:VAL:HG22	1:K:308:VAL:CG1	2.45	0.47
1:C:355:ILE:CG2	1:C:357:LEU:HD13	2.45	0.47
1:D:481:ILE:O	1:D:571:TRP:HA	2.14	0.47
1:K:441:PRO:HB2	1:L:394:ASP:HA	1.96	0.47
1:L:144:ILE:HD12	1:L:157:LEU:HD22	1.95	0.47
1:B:528:PRO:HD3	1:E:525:TRP:CE2	2.50	0.47
1:A:330:VAL:O	1:A:334:GLU:HG3	2.15	0.47
1:J:466:LEU:HA	1:J:469:ALA:HB3	1.97	0.47
1:C:311:SER:O	1:C:315:VAL:HG23	2.15	0.47
1:B:221:LYS:HD3	1:B:266:HIS:HB2	1.97	0.47
5:F:1005:3MW:H10	5:F:1005:3MW:C02	2.28	0.47
1:H:132:VAL:HG21	1:H:142:VAL:HG13	1.97	0.47
1:H:488:THR:HA	5:H:1005:3MW:O20	2.15	0.47
1:D:487:LEU:O	5:D:1004:3MW:H9	2.15	0.47
1:H:214:LEU:HD21	1:H:222:LEU:HD22	1.97	0.47
1:I:517:SER:HA	1:I:595:LEU:HD13	1.96	0.47
1:I:596:LEU:O	1:I:599:PHE:HB3	2.15	0.47
1:F:533:TYR:HB2	1:F:560:LEU:HD11	1.97	0.47
1:F:395:LEU:HD11	1:F:581:TRP:CD2	2.50	0.47
1:F:298:ILE:HA	1:F:400:MET:SD	2.54	0.47
1:D:454:GLU:OE1	1:D:539:SER:OG	2.33	0.47
1:L:386:LYS:HE3	1:L:396:MET:CG	2.42	0.47
4:C:1006:1PE:H141	1:D:200:GLU:OE2	2.15	0.47
1:C:374:LYS:HB2	1:C:485:ALA:CB	2.44	0.47
1:D:374:LYS:HB2	1:D:485:ALA:CB	2.44	0.47
1:B:386:LYS:HB3	1:B:391:SER:HB3	1.96	0.47
1:C:471:VAL:HG12	1:C:475:LYS:HE2	1.97	0.47
1:F:322:ASN:HB3	1:K:160:GLU:OE2	2.15	0.46
1:B:520:SER:CB	1:B:595:LEU:HA	2.46	0.46
1:K:498:SER:O	1:K:523:PRO:HG2	2.14	0.46
1:D:316:GLU:O	1:D:320:LYS:HG3	2.15	0.46
1:D:148:VAL:HG21	1:D:157:LEU:CD1	2.46	0.46
1:L:214:LEU:HD21	1:L:222:LEU:HD22	1.97	0.46

Continued on next page...

Continued from previous page...

Atom-1	Atom-2	Interatomic distance (Å)	Clash overlap (Å)
1:E:117:ILE:HD11	1:E:146:SER:OG	2.15	0.46
1:I:454:GLU:OE1	1:I:539:SER:OG	2.31	0.46
1:L:131:LEU:CD2	1:L:190:VAL:HB	2.45	0.46
1:D:441:PRO:HB2	1:E:394:ASP:HA	1.98	0.46
1:D:190:VAL:HG11	1:D:206:VAL:HG13	1.97	0.46
1:D:135:PRO:HA	1:D:194:SER:O	2.15	0.46
1:A:359:TYR:HE2	1:A:418:PRO:HG2	1.80	0.46
1:F:457:ASN:HB2	1:F:547:ILE:HD13	1.97	0.46
1:C:500:ALA:HB3	1:C:524:VAL:HG22	1.96	0.46
1:D:214:LEU:HD21	1:D:222:LEU:HD22	1.98	0.46
1:L:114:VAL:HG12	1:L:274:ALA:HB1	1.98	0.46
1:B:289:PHE:O	1:B:293:TYR:N	2.37	0.46
1:G:196:ALA:O	1:G:198:LEU:N	2.49	0.46
1:B:240:GLU:OE1	1:B:594:ARG:NH1	2.39	0.46
1:B:181:ASN:ND2	1:B:183:ASN:ND2	2.63	0.46
1:L:372:VAL:O	1:L:483:ASP:HA	2.16	0.46
1:L:290:GLY:C	1:L:593:VAL:HG11	2.36	0.46
1:G:372:VAL:O	1:G:483:ASP:HA	2.16	0.46
1:G:307:PRO:CD	1:G:377:THR:HG21	2.46	0.46
1:H:129:ILE:CD1	1:H:213:MET:HE1	2.46	0.46
1:K:460:ALA:HB3	1:K:546:GLN:NE2	2.31	0.46
1:E:324:GLU:HB2	1:E:358:THR:HB	1.97	0.46
1:H:244:TYR:OH	1:H:588:PRO:O	2.34	0.46
1:A:374:LYS:HE2	1:A:376:ILE:HD13	1.97	0.46
1:E:487:LEU:O	5:E:1007:3MW:H9	2.15	0.46
1:E:441:PRO:HD2	1:F:378:PHE:CZ	2.50	0.46
1:A:244:TYR:OH	1:A:588:PRO:O	2.31	0.46
1:H:395:LEU:HD11	1:H:581:TRP:CD2	2.51	0.46
1:G:329:GLY:O	1:G:333:LEU:HG	2.16	0.46
1:C:134:ASN:ND2	1:C:141:PRO:HD2	2.30	0.46
1:E:207:VAL:HG21	1:E:241:THR:HB	1.97	0.46
1:E:536:THR:HG21	1:E:551:VAL:CG2	2.45	0.46
1:J:329:GLY:O	1:J:333:LEU:HG	2.16	0.46
1:G:528:PRO:HB3	1:L:525:TRP:CZ3	2.50	0.46
1:I:207:VAL:O	1:I:211:VAL:HG23	2.16	0.46
1:G:511:ASN:O	1:G:515:GLN:HB2	2.16	0.46
1:D:498:SER:O	1:D:523:PRO:HG2	2.15	0.46
1:G:178:PHE:HZ	1:J:155:GLU:HG2	1.81	0.46
1:I:416:LEU:HD13	1:I:601:LEU:HD21	1.97	0.46
1:B:442:GLY:O	8:B:1103:HOH:O	2.21	0.46
1:B:460:ALA:HB3	1:B:546:GLN:NE2	2.31	0.46

Continued on next page...

Continued from previous page...

Atom-1	Atom-2	Interatomic distance (Å)	Clash overlap (Å)
1:I:116:ASP:HA	1:I:274:ALA:HB2	1.97	0.46
1:H:209:SER:O	1:H:212:THR:OG1	2.32	0.46
1:G:207:VAL:O	1:G:211:VAL:HG23	2.16	0.46
1:L:90:GLN:NE2	1:L:95:ASP:O	2.45	0.46
1:G:132:VAL:HG11	1:G:144:ILE:CD1	2.41	0.46
1:I:392:MET:CE	5:I:1004:3MW:H1	2.46	0.46
1:A:394:ASP:HA	1:C:441:PRO:HB2	1.96	0.46
1:I:581:TRP:CZ3	1:I:588:PRO:HG3	2.50	0.46
1:A:533:TYR:HB2	1:A:560:LEU:CD1	2.46	0.46
1:D:579:VAL:O	1:D:589:LYS:HD2	2.16	0.46
1:B:424:HIS:CG	1:B:476:LEU:HD13	2.51	0.46
1:C:370:ALA:N	1:C:478:VAL:HG11	2.31	0.46
1:J:200:GLU:HG2	1:J:201:ALA:N	2.30	0.46
1:F:301:PRO:HB2	1:F:303:ASN:OD1	2.15	0.46
1:J:198:LEU:HD22	1:J:202:ASP:CB	2.42	0.45
1:G:320:LYS:HZ1	4:G:1007:1PE:C15	2.29	0.45
1:L:392:MET:HE3	5:L:1005:3MW:H1	1.96	0.45
1:D:359:TYR:CE2	1:D:418:PRO:HD2	2.51	0.45
1:D:299:ALA:HB1	1:F:541:TYR:CZ	2.51	0.45
1:G:525:TRP:CZ3	1:L:528:PRO:HB3	2.51	0.45
1:K:106:PRO:HD2	1:K:247:MET:SD	2.55	0.45
1:B:338:MET:CE	1:B:468:ASP:HB3	2.46	0.45
1:H:510:ILE:HD13	1:H:526:TRP:NE1	2.30	0.45
1:B:383:TYR:HE2	1:B:438:SER:HB2	1.79	0.45
1:J:235:PHE:O	1:J:238:PHE:HB3	2.16	0.45
1:C:200:GLU:OE2	1:C:523:PRO:HD3	2.17	0.45
1:H:451:LYS:HZ3	1:H:564:GLU:HB3	1.80	0.45
1:E:510:ILE:O	1:E:514:LEU:HG	2.17	0.45
1:K:359:TYR:CE2	1:K:418:PRO:HD2	2.52	0.45
1:I:209:SER:O	1:I:212:THR:OG1	2.28	0.45
1:I:230:VAL:HG12	1:I:234:LEU:HD23	1.97	0.45
1:A:232:LYS:HE2	1:A:280:GLU:OE2	2.15	0.45
1:D:235:PHE:CE1	1:D:269:VAL:HG11	2.51	0.45
1:K:453:ILE:HD11	1:K:565:PHE:HZ	1.81	0.45
1:E:498:SER:O	1:E:523:PRO:HG2	2.15	0.45
1:F:100:PRO:O	1:F:251:ARG:NH1	2.36	0.45
1:G:579:VAL:O	1:G:589:LYS:HD2	2.16	0.45
1:E:329:GLY:O	1:E:333:LEU:HG	2.17	0.45
1:J:341:TYR:CZ	1:J:428:ALA:HB1	2.51	0.45
1:A:328:LEU:N	1:A:328:LEU:HD12	2.31	0.45
1:G:129:ILE:HD11	1:G:213:MET:CE	2.47	0.45

Continued on next page...

Continued from previous page...

Atom-1	Atom-2	Interatomic distance (Å)	Clash overlap (Å)
1:G:498:SER:O	1:G:523:PRO:HG2	2.16	0.45
1:H:381:GLY:HA2	1:H:459:ASP:OD1	2.16	0.45
1:G:244:TYR:OH	1:G:588:PRO:O	2.34	0.45
1:K:374:LYS:HE2	1:K:376:ILE:HD13	1.96	0.45
1:H:528:PRO:HD3	1:K:525:TRP:CE2	2.51	0.45
1:I:508:GLU:O	1:I:512:LYS:HG3	2.16	0.45
1:E:460:ALA:O	1:E:546:GLN:NE2	2.49	0.45
1:G:333:LEU:HD13	1:G:341:TYR:CE2	2.52	0.45
1:B:360:LYS:HE3	1:B:360:LYS:HB2	1.74	0.45
1:E:207:VAL:O	1:E:211:VAL:HG23	2.17	0.45
1:D:254:SER:HA	1:D:255:THR:HA	1.56	0.45
1:K:395:LEU:HD11	1:K:581:TRP:CG	2.52	0.45
1:A:120:GLY:HA2	1:A:147:LYS:O	2.17	0.45
1:D:106:PRO:HD2	1:D:247:MET:SD	2.57	0.45
1:G:123:VAL:HG21	1:G:153:VAL:HG11	1.98	0.45
1:B:133:ASN:HB2	1:B:228:ILE:HG22	1.98	0.45
1:F:539:SER:HB3	1:F:542:ALA:O	2.17	0.45
1:A:301:PRO:HB2	1:A:303:ASN:OD1	2.17	0.45
1:G:530:ILE:O	1:G:560:LEU:HD11	2.16	0.45
1:A:152:GLN:HG2	1:A:180:ASP:OD1	2.17	0.45
1:A:275:ASP:HA	1:A:278:LYS:HE2	1.98	0.45
1:E:500:ALA:HB3	1:E:524:VAL:HG22	1.99	0.45
1:B:392:MET:HE3	5:B:1005:3MW:H16	1.98	0.45
1:K:338:MET:HE2	1:K:468:ASP:HB3	1.98	0.45
1:B:357:LEU:HB2	1:B:425:PHE:HB2	1.99	0.45
1:E:510:ILE:HD13	1:E:526:TRP:NE1	2.32	0.45
1:C:114:VAL:HG12	1:C:274:ALA:HB1	1.99	0.45
1:L:361:SER:O	1:L:365:VAL:HG21	2.17	0.45
1:F:236:ARG:HB3	1:F:280:GLU:HB3	1.98	0.45
1:L:338:MET:HA	1:L:448:SER:HB3	1.99	0.45
1:K:392:MET:HE1	5:K:1006:3MW:H1	1.99	0.45
1:J:232:LYS:HA	1:J:277:TYR:CE1	2.52	0.45
1:B:374:LYS:HB2	1:B:485:ALA:CB	2.47	0.45
1:F:341:TYR:CE1	1:F:428:ALA:HB1	2.51	0.45
1:G:117:ILE:HG12	1:G:270:TYR:HB3	1.98	0.45
1:B:466:LEU:O	1:B:470:LEU:HG	2.17	0.45
1:J:441:PRO:HD2	1:K:378:PHE:CZ	2.51	0.45
1:F:142:VAL:HG22	1:F:167:VAL:CG1	2.47	0.45
1:D:406:VAL:CG1	1:D:425:PHE:HB3	2.47	0.45
1:D:333:LEU:HD13	1:D:341:TYR:CE2	2.51	0.45
1:B:510:ILE:HD13	1:B:526:TRP:NE1	2.32	0.45

Continued on next page...

Continued from previous page...

Atom-1	Atom-2	Interatomic distance (Å)	Clash overlap (Å)
1:F:418:PRO:HB3	1:F:601:LEU:HD23	1.99	0.45
1:G:275:ASP:HA	1:G:278:LYS:CG	2.40	0.44
1:A:174:HIS:CD2	1:A:213:MET:HE3	2.52	0.44
1:B:436:LYS:HG2	6:B:1004:SO4:O2	2.17	0.44
1:G:421:VAL:HG21	1:G:423:ILE:HD11	1.99	0.44
1:K:236:ARG:CG	1:K:284:ALA:HB2	2.47	0.44
1:G:90:GLN:NE2	1:G:95:ASP:O	2.44	0.44
1:L:355:ILE:CG2	1:L:357:LEU:HD13	2.48	0.44
1:C:364:ASP:O	1:C:366:LYS:HG3	2.18	0.44
1:I:292:TYR:O	1:I:296:GLN:HG3	2.17	0.44
1:J:369:ILE:O	1:J:423:ILE:HA	2.17	0.44
1:H:528:PRO:HB3	1:K:525:TRP:CE3	2.52	0.44
1:H:221:LYS:CD	1:H:266:HIS:HB2	2.47	0.44
1:A:326:LYS:HE2	1:A:328:LEU:CD1	2.45	0.44
1:A:123:VAL:O	1:A:123:VAL:HG12	2.17	0.44
1:F:361:SER:OG	1:F:362:LYS:N	2.50	0.44
1:H:520:SER:CB	1:H:595:LEU:HA	2.48	0.44
1:F:145:SER:H	1:F:227:GLU:CD	2.19	0.44
1:H:343:SER:HA	1:H:346:LYS:CD	2.47	0.44
1:L:457:ASN:HB2	1:L:547:ILE:HD13	2.00	0.44
1:C:346:LYS:HE2	1:C:437:ASN:O	2.17	0.44
1:E:148:VAL:HG21	1:E:157:LEU:CD1	2.45	0.44
1:G:307:PRO:HA	1:G:429:VAL:HG11	1.99	0.44
1:K:333:LEU:HD22	1:K:338:MET:SD	2.57	0.44
1:E:579:VAL:O	1:E:589:LYS:HD2	2.17	0.44
1:B:481:ILE:O	1:B:571:TRP:HA	2.17	0.44
1:G:320:LYS:HB3	4:G:1006:1PE:C25	2.47	0.44
1:A:315:VAL:HG13	1:A:325:TYR:CZ	2.52	0.44
1:C:99:ILE:CD1	1:C:305:CYS:HA	2.48	0.44
1:A:196:ALA:O	1:A:198:LEU:N	2.50	0.44
1:B:395:LEU:HD11	1:B:581:TRP:CG	2.53	0.44
1:K:168:LYS:HB3	1:K:171:THR:OG1	2.18	0.44
1:F:509:LEU:O	1:F:513:ILE:HG12	2.18	0.44
1:I:330:VAL:O	1:I:334:GLU:HG3	2.16	0.44
1:J:509:LEU:O	1:J:513:ILE:HG12	2.18	0.44
1:K:406:VAL:CG1	1:K:425:PHE:HB3	2.47	0.44
1:F:327:ILE:N	1:F:327:ILE:CD1	2.81	0.44
1:H:300:ALA:HA	1:H:301:PRO:HD3	1.90	0.44
1:G:200:GLU:HG2	1:G:201:ALA:N	2.31	0.44
1:C:478:VAL:CG1	1:C:479:ASP:N	2.81	0.44
1:D:253:LYS:HG2	1:F:541:TYR:O	2.18	0.44

Continued on next page...

Continued from previous page...

Atom-1	Atom-2	Interatomic distance (Å)	Clash overlap (Å)
1:C:293:TYR:CE2	1:C:317:LEU:HD22	2.52	0.44
1:K:359:TYR:HE2	1:K:418:PRO:HG2	1.81	0.44
1:C:173:LYS:HB2	1:C:189:TYR:CE1	2.53	0.44
1:L:300:ALA:HA	1:L:301:PRO:HD3	1.88	0.44
1:F:321:LEU:HD11	1:F:411:TYR:HA	2.00	0.44
1:A:506:ASN:O	1:A:510:ILE:HG12	2.17	0.44
1:E:546:GLN:HG2	1:E:547:ILE:HG23	1.99	0.44
1:H:174:HIS:CE1	1:H:213:MET:HE3	2.52	0.44
1:G:508:GLU:O	1:G:512:LYS:HG3	2.18	0.44
1:C:520:SER:O	1:C:521:ASN:HB2	2.18	0.44
1:E:297:LEU:HB3	1:E:400:MET:HE1	2.00	0.44
1:L:328:LEU:HD12	1:L:328:LEU:N	2.32	0.44
1:A:470:LEU:HA	1:A:470:LEU:HD12	1.82	0.44
1:G:198:LEU:CD1	1:G:202:ASP:HB2	2.46	0.44
1:A:341:TYR:CZ	1:A:428:ALA:HB1	2.53	0.44
1:F:533:TYR:HB2	1:F:560:LEU:CD1	2.48	0.44
1:E:326:LYS:HD2	1:E:328:LEU:HD11	2.00	0.44
1:J:231:ASP:OD1	1:J:234:LEU:N	2.34	0.44
1:J:234:LEU:O	1:J:234:LEU:HD23	2.17	0.44
1:K:213:MET:O	1:K:217:ASN:HB2	2.18	0.44
1:F:217:ASN:HB3	1:F:219:LEU:HG	1.99	0.44
1:B:196:ALA:O	1:B:198:LEU:N	2.51	0.44
1:E:597:THR:HA	1:E:600:VAL:HG22	2.00	0.44
1:J:202:ASP:O	1:J:206:VAL:HG23	2.18	0.44
1:J:452:THR:HG22	1:J:542:ALA:CB	2.44	0.44
1:G:236:ARG:O	1:G:240:GLU:HG3	2.18	0.44
1:D:132:VAL:HG11	1:D:144:ILE:HD13	2.00	0.44
1:K:236:ARG:HB2	1:K:280:GLU:HB3	1.99	0.44
1:B:517:SER:HA	1:B:595:LEU:HD13	1.99	0.44
1:E:537:LEU:HA	1:E:545:ASN:HB2	1.99	0.44
1:F:328:LEU:HB2	1:F:354:PHE:HB3	2.00	0.44
1:B:106:PRO:HD2	1:B:247:MET:SD	2.58	0.44
1:G:125:GLU:HG3	1:G:221:LYS:HD2	2.00	0.44
1:G:311:SER:HA	1:G:355:ILE:HD11	2.00	0.44
1:K:506:ASN:O	1:K:510:ILE:HG13	2.18	0.44
1:A:209:SER:O	1:A:212:THR:OG1	2.31	0.44
1:G:407:LEU:O	1:G:410:ALA:HB3	2.18	0.44
1:C:536:THR:HG21	1:C:551:VAL:HG23	2.00	0.44
1:C:123:VAL:HG12	1:C:123:VAL:O	2.18	0.43
1:E:487:LEU:HD22	1:E:573:HIS:CE1	2.53	0.43
1:K:196:ALA:O	1:K:198:LEU:N	2.51	0.43

Continued on next page...

Continued from previous page...

Atom-1	Atom-2	Interatomic distance (Å)	Clash overlap (Å)
1:C:532:GLU:HB2	4:C:1006:1PE:C24	2.47	0.43
1:L:103:TYR:N	6:L:1004:SO4:O4	2.51	0.43
1:A:150:ASP:HB3	1:A:153:VAL:HB	2.00	0.43
1:I:321:LEU:CD1	1:I:411:TYR:HA	2.47	0.43
1:E:103:TYR:CB	4:E:1006:1PE:H161	2.48	0.43
1:A:165:PHE:HB3	1:A:189:TYR:OH	2.18	0.43
1:K:346:LYS:HE2	1:K:437:ASN:O	2.17	0.43
1:J:375:GLY:O	1:J:429:VAL:HA	2.18	0.43
1:I:359:TYR:O	1:I:422:GLU:HA	2.17	0.43
1:H:441:PRO:HB2	1:I:394:ASP:HA	1.99	0.43
1:A:375:GLY:O	1:A:429:VAL:HA	2.17	0.43
1:I:441:PRO:HG3	1:I:458:THR:HG23	1.99	0.43
1:G:301:PRO:HB2	1:G:303:ASN:OD1	2.19	0.43
1:G:160:GLU:O	1:G:163:GLU:HG2	2.17	0.43
1:B:330:VAL:O	1:B:334:GLU:HG3	2.18	0.43
1:L:298:ILE:HG23	1:L:398:PHE:HA	1.99	0.43
1:E:520:SER:HB3	1:E:598:GLU:HG3	2.00	0.43
1:F:207:VAL:O	1:F:211:VAL:HG23	2.18	0.43
1:I:364:ASP:O	1:I:366:LYS:HG3	2.19	0.43
1:J:273:ASN:OD1	1:J:276:THR:HG23	2.18	0.43
1:I:551:VAL:HG22	1:I:553:ALA:N	2.32	0.43
1:C:478:VAL:HG12	1:C:479:ASP:N	2.32	0.43
1:J:463:ARG:NH1	1:J:546:GLN:O	2.48	0.43
1:A:156:PHE:HE2	1:A:175:PHE:CD2	2.36	0.43
1:J:101:ILE:HG21	1:J:293:TYR:HE1	1.83	0.43
1:G:171:THR:O	1:G:190:VAL:HA	2.18	0.43
1:C:235:PHE:O	1:C:239:LEU:HD13	2.18	0.43
1:G:528:PRO:HD3	1:L:525:TRP:CD1	2.53	0.43
1:A:117:ILE:C	1:A:119:GLY:H	2.22	0.43
1:G:525:TRP:CE2	1:L:528:PRO:HD3	2.54	0.43
1:J:435:SER:OG	6:J:1004:SO4:O2	2.29	0.43
1:G:510:ILE:O	1:G:514:LEU:HG	2.17	0.43
1:L:340:ALA:HA	1:L:445:ILE:HD12	2.00	0.43
1:C:375:GLY:O	1:C:429:VAL:HA	2.19	0.43
1:E:106:PRO:HD2	1:E:247:MET:SD	2.58	0.43
1:F:198:LEU:HD22	1:F:202:ASP:HB3	1.99	0.43
1:B:453:ILE:HD13	1:B:561:PHE:HZ	1.84	0.43
1:E:328:LEU:HB2	1:E:354:PHE:HB3	2.00	0.43
1:H:236:ARG:HD3	1:H:280:GLU:OE1	2.18	0.43
1:J:579:VAL:O	1:J:589:LYS:HD2	2.18	0.43
1:G:374:LYS:HB2	1:G:485:ALA:CB	2.48	0.43

Continued on next page...

Continued from previous page...

Atom-1	Atom-2	Interatomic distance (Å)	Clash overlap (Å)
1:A:125:GLU:HG3	1:A:221:LYS:HD2	2.01	0.43
1:L:200:GLU:HG3	1:L:201:ALA:N	2.32	0.43
1:J:342:LEU:HD12	1:K:94:LEU:HD12	1.99	0.43
1:D:324:GLU:HB2	1:D:358:THR:HB	2.00	0.43
1:H:292:TYR:O	1:H:296:GLN:HG3	2.18	0.43
1:J:223:THR:HA	1:J:268:GLY:O	2.19	0.43
1:C:321:LEU:HD11	1:C:411:TYR:HA	2.01	0.43
1:A:176:TYR:HB3	1:D:177:MET:HB3	2.01	0.43
1:H:440:ARG:HH21	1:I:303:ASN:HA	1.83	0.43
1:F:374:LYS:HB2	1:F:485:ALA:HB1	2.00	0.43
1:E:460:ALA:HB3	1:E:546:GLN:NE2	2.33	0.43
1:F:328:LEU:HD12	1:F:328:LEU:N	2.33	0.43
1:A:355:ILE:CG2	1:A:357:LEU:HD13	2.48	0.43
1:A:132:VAL:HG11	1:A:144:ILE:HD13	2.00	0.43
1:A:508:GLU:O	1:A:512:LYS:HG3	2.19	0.43
1:F:376:ILE:HD11	1:F:465:THR:HG21	2.01	0.43
1:I:143:LYS:NZ	8:I:1110:HOH:O	2.21	0.43
1:F:481:ILE:O	1:F:571:TRP:HA	2.18	0.43
1:D:232:LYS:HA	1:D:277:TYR:CE1	2.54	0.43
1:A:176:TYR:CG	1:D:156:PHE:HD1	2.36	0.43
1:C:573:HIS:NE2	8:C:1106:HOH:O	2.35	0.43
1:H:129:ILE:HD12	1:H:213:MET:HE1	2.00	0.43
1:G:342:LEU:O	1:G:346:LYS:HG3	2.19	0.43
1:D:497:THR:O	1:D:589:LYS:NZ	2.52	0.43
1:E:481:ILE:O	1:E:571:TRP:HA	2.19	0.43
1:D:298:ILE:HA	1:D:400:MET:SD	2.58	0.43
1:F:498:SER:O	1:F:523:PRO:HG2	2.18	0.43
1:I:544:ILE:HD12	1:I:564:GLU:HG3	2.01	0.43
1:E:152:GLN:HG2	1:E:180:ASP:OD2	2.19	0.43
1:A:89:PRO:HG2	1:A:350:TYR:CD2	2.53	0.43
1:I:396:MET:SD	1:I:398:PHE:HE2	2.42	0.43
1:J:91:VAL:HB	1:L:346:LYS:HE3	2.00	0.43
1:C:381:GLY:HA2	1:C:459:ASP:OD1	2.18	0.43
1:E:207:VAL:CG1	1:E:241:THR:HG22	2.42	0.42
1:I:307:PRO:HD3	1:I:377:THR:HG21	2.00	0.42
1:G:155:GLU:O	1:G:158:LYS:HD3	2.19	0.42
1:H:142:VAL:HG21	1:H:189:TYR:CZ	2.54	0.42
1:J:449:ASN:HD21	1:J:451:LYS:HD2	1.84	0.42
1:L:374:LYS:HB2	1:L:485:ALA:HB1	2.00	0.42
1:C:374:LYS:HB2	1:C:485:ALA:HB2	2.01	0.42
1:E:174:HIS:C	1:E:175:PHE:HD1	2.23	0.42

Continued on next page...

Continued from previous page...

Atom-1	Atom-2	Interatomic distance (Å)	Clash overlap (Å)
1:I:117:ILE:C	1:I:119:GLY:H	2.23	0.42
1:K:287:TYR:CE1	1:K:597:THR:HG21	2.54	0.42
1:L:127:LEU:HA	1:L:186:ALA:HB3	2.01	0.42
1:B:375:GLY:O	1:B:429:VAL:HA	2.19	0.42
1:G:436:LYS:NZ	6:G:1004:SO4:O4	2.53	0.42
1:L:307:PRO:N	1:L:377:THR:HG21	2.34	0.42
1:B:300:ALA:HA	1:B:301:PRO:HD3	1.89	0.42
1:E:96:PRO:HG2	1:E:303:ASN:O	2.18	0.42
1:C:292:TYR:O	1:C:296:GLN:HG3	2.19	0.42
1:A:500:ALA:HB2	1:A:579:VAL:HG21	2.01	0.42
1:D:448:SER:OG	1:D:471:VAL:HG11	2.20	0.42
1:K:123:VAL:O	1:K:123:VAL:HG12	2.19	0.42
1:K:114:VAL:HG12	1:K:274:ALA:HB1	2.01	0.42
1:H:487:LEU:HD22	1:H:573:HIS:CE1	2.54	0.42
1:E:135:PRO:HA	1:E:194:SER:O	2.18	0.42
1:C:528:PRO:HB3	1:D:525:TRP:CE3	2.54	0.42
1:L:329:GLY:O	1:L:333:LEU:HG	2.19	0.42
1:D:124:GLU:O	1:D:185:VAL:HG12	2.19	0.42
1:H:328:LEU:N	1:H:328:LEU:HD12	2.33	0.42
1:C:483:ASP:OD1	1:C:573:HIS:ND1	2.43	0.42
1:G:369:ILE:HB	1:G:423:ILE:HD13	2.01	0.42
1:G:383:TYR:CE2	1:G:438:SER:HB2	2.54	0.42
1:D:321:LEU:O	1:D:322:ASN:CB	2.68	0.42
1:C:232:LYS:HE3	1:C:276:THR:O	2.19	0.42
1:C:500:ALA:HB2	1:C:579:VAL:HG21	2.00	0.42
1:C:346:LYS:HB3	1:C:437:ASN:O	2.20	0.42
1:J:500:ALA:HB2	1:J:579:VAL:HG21	2.01	0.42
1:A:457:ASN:HB2	1:A:547:ILE:HD13	2.00	0.42
1:G:533:TYR:OH	1:L:495:LEU:O	2.32	0.42
1:A:481:ILE:O	1:A:571:TRP:HA	2.19	0.42
1:K:158:LYS:O	1:K:159:ASP:CB	2.67	0.42
1:G:321:LEU:HD11	1:G:411:TYR:HA	2.01	0.42
1:C:531:ASN:HB2	4:C:1006:IPE:H132	2.01	0.42
1:G:307:PRO:HA	1:G:429:VAL:CG1	2.50	0.42
1:A:178:PHE:CZ	1:D:155:GLU:HG2	2.50	0.42
1:A:176:TYR:CD1	1:D:156:PHE:CD1	3.06	0.42
1:E:169:LEU:C	1:E:169:LEU:HD13	2.39	0.42
1:I:374:LYS:HB2	1:I:485:ALA:HB1	2.00	0.42
1:D:214:LEU:HD11	1:D:222:LEU:HD22	2.02	0.42
1:B:329:GLY:O	1:B:333:LEU:HG	2.19	0.42
1:I:397:LYS:O	1:I:400:MET:HG2	2.19	0.42

Continued on next page...

Continued from previous page...

Atom-1	Atom-2	Interatomic distance (Å)	Clash overlap (Å)
1:A:574:ILE:HG22	1:A:576:ILE:HG23	2.01	0.42
1:L:196:ALA:O	1:L:198:LEU:N	2.52	0.42
1:H:307:PRO:HA	1:H:429:VAL:HG12	1.99	0.42
1:B:392:MET:HE1	5:B:1005:3MW:H16	2.01	0.42
1:J:374:LYS:HE3	1:J:462:GLY:CA	2.49	0.42
1:H:581:TRP:CZ3	1:H:588:PRO:HG3	2.55	0.42
1:C:344:VAL:CG1	1:C:461:GLU:HB2	2.50	0.42
1:E:273:ASN:OD1	1:E:276:THR:HG23	2.20	0.42
1:J:290:GLY:HA3	1:J:412:CYS:SG	2.59	0.42
1:L:272:ASN:C	1:L:272:ASN:HD22	2.22	0.42
1:F:552:LYS:HA	1:F:552:LYS:HD3	1.79	0.42
1:G:375:GLY:O	1:G:429:VAL:HA	2.18	0.42
1:J:571:TRP:CZ2	1:J:573:HIS:HB2	2.55	0.42
1:B:328:LEU:N	1:B:328:LEU:HD12	2.34	0.42
1:A:410:ALA:HA	1:A:425:PHE:CZ	2.55	0.42
1:I:346:LYS:HB3	1:I:437:ASN:O	2.19	0.42
1:K:341:TYR:CE1	1:K:428:ALA:HB1	2.55	0.42
1:H:118:LYS:HE3	1:H:272:ASN:OD1	2.19	0.42
1:E:392:MET:HE1	5:E:1007:3MW:H16	2.02	0.42
6:G:1004:SO4:O4	1:H:436:LYS:NZ	2.52	0.42
1:C:178:PHE:CZ	1:E:155:GLU:HG2	2.47	0.42
1:F:483:ASP:OD1	1:F:573:HIS:ND1	2.44	0.42
1:E:123:VAL:HG11	1:E:153:VAL:CG2	2.48	0.42
1:A:502:VAL:HG13	1:A:526:TRP:HA	2.01	0.42
1:I:89:PRO:HG2	1:I:350:TYR:CD2	2.55	0.42
1:I:329:GLY:O	1:I:333:LEU:HG	2.19	0.42
1:K:548:SER:CB	1:K:551:VAL:HG12	2.49	0.42
1:B:585:ALA:HB1	1:B:587:LYS:HE2	2.01	0.42
1:I:506:ASN:O	1:I:510:ILE:HG13	2.19	0.42
1:K:301:PRO:HB2	1:K:303:ASN:OD1	2.20	0.42
1:J:316:GLU:O	1:J:320:LYS:HG3	2.20	0.42
1:A:202:ASP:O	1:A:206:VAL:HG23	2.19	0.42
1:E:161:ASN:O	1:E:164:LYS:HG2	2.18	0.42
1:I:551:VAL:HG11	1:I:557:VAL:HG22	2.00	0.42
1:J:406:VAL:CG1	1:J:425:PHE:HB3	2.50	0.42
1:H:142:VAL:HG21	1:H:189:TYR:CE2	2.54	0.42
1:C:579:VAL:O	1:C:589:LYS:HD2	2.19	0.42
1:L:200:GLU:OE2	1:L:523:PRO:HD3	2.20	0.42
1:A:132:VAL:HG21	1:A:142:VAL:HG13	2.01	0.42
1:K:223:THR:HA	1:K:268:GLY:O	2.20	0.42
1:C:481:ILE:O	1:C:571:TRP:HA	2.20	0.42

Continued on next page...

Continued from previous page...

Atom-1	Atom-2	Interatomic distance (Å)	Clash overlap (Å)
1:H:316:GLU:O	1:H:320:LYS:HG3	2.20	0.42
1:F:460:ALA:HB3	1:F:546:GLN:NE2	2.34	0.42
1:H:600:VAL:HG23	1:H:601:LEU:CD1	2.50	0.42
1:D:342:LEU:HD12	1:E:94:LEU:HD12	2.01	0.42
1:H:453:ILE:HD13	1:H:561:PHE:HZ	1.85	0.42
1:L:131:LEU:HD23	1:L:190:VAL:HB	2.01	0.41
1:D:124:GLU:CG	1:D:125:GLU:N	2.83	0.41
1:H:175:PHE:CD1	1:L:176:TYR:HB2	2.55	0.41
1:L:341:TYR:CD1	1:L:428:ALA:HB1	2.55	0.41
1:C:392:MET:CE	5:C:1007:3MW:H16	2.49	0.41
1:A:541:TYR:O	1:B:253:LYS:HG2	2.19	0.41
1:D:88:VAL:HG21	1:D:309:SER:HB3	2.02	0.41
1:C:516:SER:OG	1:C:599:PHE:HA	2.20	0.41
1:J:368:LYS:HG2	1:J:422:GLU:HB3	2.01	0.41
1:G:298:ILE:HG23	1:G:398:PHE:HA	2.02	0.41
1:C:552:LYS:HA	1:C:552:LYS:HD3	1.81	0.41
1:F:123:VAL:O	1:F:123:VAL:HG12	2.20	0.41
1:F:129:ILE:HG13	1:F:210:LEU:CD1	2.50	0.41
1:C:124:GLU:CG	1:C:125:GLU:N	2.81	0.41
1:J:333:LEU:HD13	1:J:341:TYR:CE2	2.55	0.41
1:F:315:VAL:HG22	1:F:327:ILE:CD1	2.50	0.41
1:D:253:LYS:O	1:D:254:SER:CB	2.67	0.41
1:E:416:LEU:HD13	1:E:601:LEU:HD21	2.01	0.41
1:D:395:LEU:HD11	1:D:581:TRP:CG	2.55	0.41
1:D:223:THR:HA	1:D:268:GLY:O	2.20	0.41
1:H:171:THR:O	1:H:190:VAL:HA	2.20	0.41
1:H:235:PHE:CG	1:H:277:TYR:HD2	2.38	0.41
1:J:111:LYS:HD2	1:J:111:LYS:HA	1.86	0.41
1:F:129:ILE:HD11	1:F:213:MET:HE1	2.02	0.41
1:A:341:TYR:CD1	1:A:428:ALA:HB1	2.56	0.41
1:H:481:ILE:O	1:H:571:TRP:HA	2.19	0.41
1:J:374:LYS:HB2	1:J:485:ALA:HB1	2.02	0.41
1:A:436:LYS:HB3	1:B:347:GLY:O	2.19	0.41
1:K:298:ILE:HG23	1:K:398:PHE:HA	2.02	0.41
1:J:498:SER:O	1:J:523:PRO:HG2	2.20	0.41
1:H:338:MET:HE2	1:H:468:ASP:HB3	1.99	0.41
1:F:272:ASN:O	1:F:273:ASN:HB2	2.20	0.41
1:G:368:LYS:N	1:G:368:LYS:HD2	2.35	0.41
1:E:150:ASP:OD2	1:E:153:VAL:HG23	2.20	0.41
1:H:503:PHE:O	1:H:573:HIS:N	2.37	0.41
1:L:222:LEU:O	1:L:267:LEU:HD12	2.21	0.41

Continued on next page...

Continued from previous page...

Atom-1	Atom-2	Interatomic distance (Å)	Clash overlap (Å)
1:D:235:PHE:HE1	1:D:269:VAL:HG11	1.85	0.41
1:I:500:ALA:HB2	1:I:579:VAL:HG21	2.02	0.41
1:A:342:LEU:HD12	1:B:94:LEU:HD12	2.02	0.41
1:A:200:GLU:OE2	1:A:521:ASN:HA	2.20	0.41
1:I:221:LYS:HE3	1:I:266:HIS:CB	2.50	0.41
1:L:89:PRO:HG2	1:L:350:TYR:CD2	2.56	0.41
1:A:585:ALA:HB1	1:A:587:LYS:HE2	2.02	0.41
1:H:200:GLU:HA	1:H:203:MET:HB3	2.01	0.41
1:A:577:ALA:HB1	5:A:1006:3MW:H15	2.02	0.41
1:I:401:SER:HB2	1:I:486:THR:CG2	2.50	0.41
1:A:106:PRO:HG2	1:A:263:TYR:CE1	2.55	0.41
1:H:359:TYR:HE2	1:H:418:PRO:HG2	1.85	0.41
1:C:406:VAL:HG12	1:C:425:PHE:HB3	2.02	0.41
1:B:131:LEU:O	1:B:227:GLU:HB2	2.21	0.41
1:D:374:LYS:HB2	1:D:485:ALA:HB2	2.03	0.41
1:G:497:THR:O	1:G:589:LYS:NZ	2.54	0.41
1:C:165:PHE:HB3	1:C:189:TYR:OH	2.20	0.41
1:K:346:LYS:HE3	1:L:91:VAL:HB	2.02	0.41
1:G:359:TYR:HE2	1:G:418:PRO:HG2	1.85	0.41
1:G:481:ILE:O	1:G:571:TRP:HA	2.20	0.41
1:H:466:LEU:O	1:H:470:LEU:HG	2.20	0.41
1:J:311:SER:HA	1:J:355:ILE:HD11	2.01	0.41
1:B:210:LEU:O	1:B:210:LEU:HD23	2.21	0.41
1:E:123:VAL:CG2	1:E:153:VAL:HG21	2.50	0.41
1:J:338:MET:HE3	1:J:468:ASP:HB3	2.02	0.41
1:B:453:ILE:HD11	1:B:565:PHE:HZ	1.85	0.41
1:I:243:PHE:HB3	1:I:288:TYR:CD1	2.56	0.41
1:F:350:TYR:HA	1:F:351:PRO:HD3	1.89	0.41
1:J:246:TYR:HE2	1:J:264:ILE:HG12	1.86	0.41
1:F:287:TYR:CE1	1:F:597:THR:HG21	2.56	0.41
1:D:165:PHE:CD2	1:D:173:LYS:HG3	2.56	0.41
1:A:332:GLU:N	1:A:332:GLU:OE1	2.48	0.41
1:A:298:ILE:HA	1:A:400:MET:SD	2.60	0.41
1:K:449:ASN:HD21	1:K:451:LYS:HD2	1.84	0.41
1:E:196:ALA:O	1:E:198:LEU:N	2.54	0.41
1:G:187:VAL:HG12	1:G:188:GLY:N	2.36	0.41
1:E:364:ASP:O	1:E:366:LYS:HG3	2.20	0.41
1:E:366:LYS:HG3	1:E:420:ASN:HB3	2.02	0.41
1:F:156:PHE:HZ	1:F:175:PHE:CD2	2.39	0.41
1:I:158:LYS:O	1:I:162:MET:HG2	2.21	0.41
1:B:396:MET:SD	1:B:398:PHE:HE2	2.44	0.41

Continued on next page...

Continued from previous page...

Atom-1	Atom-2	Interatomic distance (Å)	Clash overlap (Å)
1:D:510:ILE:HD13	1:D:526:TRP:NE1	2.35	0.41
1:I:457:ASN:O	1:I:546:GLN:NE2	2.53	0.41
1:F:127:LEU:HD11	1:F:129:ILE:HD11	2.03	0.41
1:K:551:VAL:CG1	1:K:557:VAL:HG21	2.51	0.41
1:K:374:LYS:HB2	1:K:485:ALA:HB2	2.03	0.41
1:F:392:MET:HE3	5:F:1005:3MW:H16	2.01	0.41
1:D:406:VAL:HG12	1:D:425:PHE:HB3	2.03	0.41
1:F:355:ILE:CG2	1:F:357:LEU:HD13	2.50	0.41
1:H:123:VAL:HG23	1:H:124:GLU:H	1.86	0.41
1:J:374:LYS:HB2	1:J:485:ALA:HB2	2.03	0.41
1:I:561:PHE:CE1	1:I:565:PHE:HE1	2.38	0.41
1:G:129:ILE:HD11	1:G:213:MET:HE1	2.02	0.41
1:K:406:VAL:HG12	1:K:425:PHE:HB3	2.01	0.41
1:J:203:MET:HE2	1:J:234:LEU:HD21	2.03	0.41
1:D:581:TRP:CZ3	1:D:588:PRO:HG3	2.56	0.41
1:B:579:VAL:O	1:B:589:LYS:HD2	2.21	0.41
1:L:174:HIS:C	1:L:175:PHE:HD2	2.24	0.41
1:G:135:PRO:HA	1:G:194:SER:O	2.21	0.41
1:K:369:ILE:HB	1:K:423:ILE:CD1	2.51	0.41
1:H:360:LYS:HE3	1:H:360:LYS:HB2	1.71	0.41
1:D:236:ARG:NE	1:D:240:GLU:OE2	2.45	0.41
1:K:90:GLN:NE2	1:K:95:ASP:O	2.44	0.41
1:L:361:SER:HB3	1:L:365:VAL:HG22	2.03	0.41
1:G:275:ASP:CA	1:G:278:LYS:HG3	2.43	0.41
1:F:240:GLU:HG3	1:F:284:ALA:HB1	2.03	0.41
1:D:384:ASN:OD1	1:D:441:PRO:HG3	2.22	0.41
1:A:395:LEU:HD11	1:A:581:TRP:CG	2.56	0.41
1:F:202:ASP:O	1:F:206:VAL:HG23	2.20	0.41
1:I:386:LYS:HE3	1:I:396:MET:SD	2.61	0.41
1:G:502:VAL:CG1	1:G:526:TRP:HA	2.51	0.41
1:F:551:VAL:HG22	1:F:553:ALA:H	1.85	0.40
1:F:315:VAL:HG22	1:F:327:ILE:HD11	2.01	0.40
1:H:172:SER:HA	1:H:189:TYR:O	2.21	0.40
1:B:294:ALA:O	1:B:298:ILE:HG13	2.21	0.40
1:B:223:THR:HG21	1:B:270:TYR:HE1	1.85	0.40
1:J:203:MET:CE	1:J:234:LEU:HD21	2.51	0.40
1:B:139:ASN:O	1:B:166:ASN:HB2	2.21	0.40
1:L:466:LEU:O	1:L:470:LEU:HG	2.21	0.40
1:E:214:LEU:HD21	1:E:222:LEU:HD22	2.03	0.40
1:A:536:THR:HG21	1:A:551:VAL:HG23	2.03	0.40
1:K:342:LEU:O	1:K:346:LYS:HG3	2.21	0.40

Continued on next page...

Continued from previous page...

Atom-1	Atom-2	Interatomic distance (Å)	Clash overlap (Å)
1:H:235:PHE:O	1:H:238:PHE:HB3	2.21	0.40
1:K:174:HIS:C	1:K:175:PHE:HD1	2.25	0.40
1:J:372:VAL:O	1:J:483:ASP:HA	2.21	0.40
1:G:453:ILE:HD11	1:G:565:PHE:HZ	1.87	0.40
1:K:315:VAL:HG13	1:K:325:TYR:CE1	2.56	0.40
1:J:378:PHE:CZ	1:L:441:PRO:HD2	2.57	0.40
1:J:306:ASN:H	1:J:309:SER:HG	1.66	0.40
1:I:413:VAL:HG22	1:I:600:VAL:HG21	2.03	0.40
1:J:207:VAL:O	1:J:211:VAL:N	2.45	0.40
1:A:318:ALA:HB2	1:A:357:LEU:HG	2.03	0.40
1:A:442:GLY:N	1:A:455:VAL:O	2.48	0.40
1:J:236:ARG:NE	1:J:240:GLU:OE2	2.46	0.40
1:I:388:ALA:HA	1:I:389:PRO:HD3	1.95	0.40
1:I:551:VAL:CG2	1:I:553:ALA:HB3	2.52	0.40
1:C:307:PRO:N	1:C:377:THR:HG21	2.37	0.40
1:I:129:ILE:CD1	1:I:213:MET:HE1	2.51	0.40
1:A:487:LEU:HG	3:A:1002:CO3:O3	2.21	0.40
1:G:525:TRP:NE1	1:L:528:PRO:HD3	2.36	0.40
1:C:344:VAL:HG13	1:C:461:GLU:HB2	2.03	0.40
1:K:112:VAL:HG22	1:K:267:LEU:HB3	2.03	0.40
1:E:543:ASP:OD2	1:F:254:SER:HB3	2.21	0.40
1:C:158:LYS:O	1:C:162:MET:HG2	2.21	0.40
1:A:374:LYS:HB2	1:A:485:ALA:CB	2.51	0.40
1:C:282:GLU:CD	1:C:285:ARG:HE	2.25	0.40
1:G:525:TRP:CD1	1:L:528:PRO:HD3	2.57	0.40
1:H:311:SER:O	1:H:315:VAL:HG23	2.21	0.40
1:B:323:LEU:HD22	1:B:359:TYR:HB2	2.03	0.40
1:H:348:SER:OG	1:H:431:GLU:HB3	2.21	0.40
1:B:350:TYR:HA	1:B:351:PRO:HD3	1.90	0.40
1:C:525:TRP:CZ3	1:D:528:PRO:HB3	2.55	0.40
1:E:375:GLY:O	1:E:429:VAL:HA	2.22	0.40
1:H:166:ASN:N	1:H:166:ASN:OD1	2.54	0.40

All (1) symmetry-related close contacts are listed below. The label for Atom-2 includes the symmetry operator and encoded unit-cell translations to be applied.

Atom-1	Atom-2	Interatomic distance (Å)	Clash overlap (Å)
1:C:479:ASP:OD1	1:E:366:LYS:NZ[4_455]	2.17	0.03

5.3 Torsion angles

5.3.1 Protein backbone

In the following table, the Percentiles column shows the percent Ramachandran outliers of the chain as a percentile score with respect to all X-ray entries followed by that with respect to entries of similar resolution.

The Analysed column shows the number of residues for which the backbone conformation was analysed, and the total number of residues.

Mol	Chain	Analysed	Favoured	Allowed	Outliers	Percentiles	
1	A	512/528 (97%)	489 (96%)	19 (4%)	4 (1%)	24	56
1	B	508/528 (96%)	481 (95%)	21 (4%)	6 (1%)	16	44
1	C	517/528 (98%)	498 (96%)	15 (3%)	4 (1%)	24	56
1	D	510/528 (97%)	485 (95%)	19 (4%)	6 (1%)	16	44
1	E	504/528 (96%)	482 (96%)	19 (4%)	3 (1%)	30	63
1	F	504/528 (96%)	479 (95%)	18 (4%)	7 (1%)	14	40
1	G	509/528 (96%)	486 (96%)	19 (4%)	4 (1%)	24	56
1	H	507/528 (96%)	489 (96%)	17 (3%)	1 (0%)	52	82
1	I	512/528 (97%)	491 (96%)	16 (3%)	5 (1%)	19	49
1	J	507/528 (96%)	486 (96%)	18 (4%)	3 (1%)	30	63
1	K	503/528 (95%)	483 (96%)	16 (3%)	4 (1%)	24	56
1	L	501/528 (95%)	481 (96%)	16 (3%)	4 (1%)	24	56
All	All	6094/6336 (96%)	5830 (96%)	213 (4%)	51 (1%)	24	56

All (51) Ramachandran outliers are listed below:

Mol	Chain	Res	Type
1	A	197	ASP
1	A	258	ASN
1	B	125	GLU
1	B	197	ASP
1	C	196	ALA
1	C	197	ASP
1	C	322	ASN
1	D	197	ASP
1	D	322	ASN
1	E	139	ASN
1	E	197	ASP
1	F	197	ASP

Continued on next page...

Continued from previous page...

Mol	Chain	Res	Type
1	F	322	ASN
1	F	364	ASP
1	G	182	LYS
1	G	197	ASP
1	G	322	ASN
1	I	196	ALA
1	I	197	ASP
1	J	139	ASN
1	K	197	ASP
1	L	197	ASP
1	A	196	ALA
1	B	196	ALA
1	D	254	SER
1	E	196	ALA
1	F	196	ALA
1	G	196	ALA
1	K	159	ASP
1	K	196	ALA
1	L	196	ALA
1	L	365	VAL
1	B	256	ASP
1	D	196	ALA
1	F	124	GLU
1	F	362	LYS
1	H	118	LYS
1	A	118	LYS
1	C	124	GLU
1	D	118	LYS
1	D	182	LYS
1	I	118	LYS
1	I	124	GLU
1	J	118	LYS
1	K	124	GLU
1	L	124	GLU
1	B	182	LYS
1	I	182	LYS
1	F	365	VAL
1	B	119	GLY
1	J	365	VAL

5.3.2 Protein sidechains ⓘ

In the following table, the Percentiles column shows the percent sidechain outliers of the chain as a percentile score with respect to all X-ray entries followed by that with respect to entries of similar resolution.

The Analysed column shows the number of residues for which the sidechain conformation was analysed, and the total number of residues.

Mol	Chain	Analysed	Rotameric	Outliers	Percentiles	
1	A	419/455 (92%)	416 (99%)	3 (1%)	88	96
1	B	399/455 (88%)	398 (100%)	1 (0%)	94	98
1	C	421/455 (92%)	417 (99%)	4 (1%)	82	94
1	D	417/455 (92%)	415 (100%)	2 (0%)	92	97
1	E	415/455 (91%)	415 (100%)	0	100	100
1	F	382/455 (84%)	380 (100%)	2 (0%)	92	97
1	G	422/455 (93%)	420 (100%)	2 (0%)	92	97
1	H	405/455 (89%)	403 (100%)	2 (0%)	92	97
1	I	408/455 (90%)	406 (100%)	2 (0%)	92	97
1	J	411/455 (90%)	407 (99%)	4 (1%)	82	94
1	K	411/455 (90%)	410 (100%)	1 (0%)	95	98
1	L	393/455 (86%)	387 (98%)	6 (2%)	72	91
All	All	4903/5460 (90%)	4874 (99%)	29 (1%)	90	97

All (29) residues with a non-rotameric sidechain are listed below:

Mol	Chain	Res	Type
1	A	398	PHE
1	A	439	TYR
1	A	470	LEU
1	B	439	TYR
1	C	145	SER
1	C	174	HIS
1	C	398	PHE
1	C	439	TYR
1	D	175	PHE
1	D	368	LYS
1	F	148	VAL
1	F	439	TYR
1	G	398	PHE
1	G	439	TYR

Continued on next page...

Continued from previous page...

Mol	Chain	Res	Type
1	H	166	ASN
1	H	439	TYR
1	I	400	MET
1	I	419	GLU
1	J	288	TYR
1	J	398	PHE
1	J	439	TYR
1	J	452	THR
1	K	200	GLU
1	L	272	ASN
1	L	288	TYR
1	L	398	PHE
1	L	421	VAL
1	L	439	TYR
1	L	579	VAL

Some sidechains can be flipped to improve hydrogen bonding and reduce clashes. All (3) such sidechains are listed below:

Mol	Chain	Res	Type
1	B	183	ASN
1	B	233	ASN
1	B	521	ASN

5.3.3 RNA [i](#)

There are no RNA molecules in this entry.

5.4 Non-standard residues in protein, DNA, RNA chains [i](#)

There are no non-standard protein/DNA/RNA residues in this entry.

5.5 Carbohydrates [i](#)

There are no carbohydrates in this entry.

5.6 Ligand geometry [i](#)

Of 68 ligands modelled in this entry, 24 are monoatomic - leaving 44 for Mogul analysis.

In the following table, the Counts columns list the number of bonds (or angles) for which Mogul statistics could be retrieved, the number of bonds (or angles) that are observed in the model and the number of bonds (or angles) that are defined in the chemical component dictionary. The Link column lists molecule types, if any, to which the group is linked. The Z score for a bond length (or angle) is the number of standard deviations the observed value is removed from the expected value. A bond length (or angle) with $|Z| > 2$ is considered an outlier worth inspection. RMSZ is the root-mean-square of all Z scores of the bond lengths (or angles).

Mol	Type	Chain	Res	Link	Bond lengths			Bond angles		
					Counts	RMSZ	$\# Z > 2$	Counts	RMSZ	$\# Z > 2$
3	CO3	A	1002	-	0,3,3	0.00	-	0,3,3	0.00	-
4	1PE	A	1004	-	11,11,15	0.46	0	10,10,14	0.35	0
4	1PE	A	1005	-	7,7,15	0.44	0	6,6,14	0.46	0
5	3MW	A	1006	2	26,28,28	2.23	5 (19%)	35,38,38	2.17	7 (20%)
3	CO3	B	1002	-	0,3,3	0.00	-	0,3,3	0.00	-
6	SO4	B	1004	-	4,4,4	0.25	0	6,6,6	0.22	0
5	3MW	B	1005	2	26,28,28	2.22	4 (15%)	35,38,38	2.40	6 (17%)
3	CO3	C	1002	-	0,3,3	0.00	-	0,3,3	0.00	-
6	SO4	C	1004	-	4,4,4	0.22	0	6,6,6	0.09	0
4	1PE	C	1005	-	8,8,15	0.48	0	7,7,14	0.27	0
4	1PE	C	1006	-	7,7,15	0.45	0	6,6,14	0.26	0
5	3MW	C	1007	2	26,28,28	2.28	5 (19%)	35,38,38	2.39	6 (17%)
3	CO3	D	1002	-	0,3,3	0.00	-	0,3,3	0.00	-
5	3MW	D	1004	2	26,28,28	2.20	4 (15%)	35,38,38	2.47	8 (22%)
3	CO3	E	1002	-	0,3,3	0.00	-	0,3,3	0.00	-
6	SO4	E	1004	-	4,4,4	0.22	0	6,6,6	0.09	0
4	1PE	E	1005	-	11,11,15	0.47	0	10,10,14	0.25	0
4	1PE	E	1006	-	5,5,15	0.50	0	4,4,14	0.27	0
5	3MW	E	1007	2	26,28,28	2.20	4 (15%)	35,38,38	2.33	4 (11%)
3	CO3	F	1002	-	0,3,3	0.00	-	0,3,3	0.00	-
4	1PE	F	1004	-	6,6,15	0.47	0	5,5,14	0.26	0
5	3MW	F	1005	2	26,28,28	2.25	5 (19%)	35,38,38	2.48	6 (17%)
3	CO3	G	1002	-	0,3,3	0.00	-	0,3,3	0.00	-
6	SO4	G	1004	-	4,4,4	0.22	0	6,6,6	0.09	0
6	SO4	G	1005	-	4,4,4	0.22	0	6,6,6	0.12	0
4	1PE	G	1006	-	9,9,15	0.47	0	8,8,14	0.25	0
4	1PE	G	1007	-	12,12,15	0.46	0	11,11,14	0.38	0
5	3MW	G	1008	2	26,28,28	2.22	4 (15%)	35,38,38	2.40	8 (22%)
3	CO3	H	1002	-	0,3,3	0.00	-	0,3,3	0.00	-
4	1PE	H	1004	-	9,9,15	0.45	0	8,8,14	0.31	0
5	3MW	H	1005	2	26,28,28	2.15	4 (15%)	35,38,38	2.23	8 (22%)
3	CO3	I	1002	-	0,3,3	0.00	-	0,3,3	0.00	-
5	3MW	I	1004	2	26,28,28	2.28	5 (19%)	35,38,38	2.21	6 (17%)

Mol	Type	Chain	Res	Link	Bond lengths			Bond angles		
					Counts	RMSZ	# Z > 2	Counts	RMSZ	# Z > 2
3	CO3	J	1002	-	0,3,3	0.00	-	0,3,3	0.00	-
6	SO4	J	1004	-	4,4,4	0.26	0	6,6,6	0.07	0
5	3MW	J	1005	2	26,28,28	2.26	5 (19%)	35,38,38	2.09	5 (14%)
3	CO3	K	1002	-	0,3,3	0.00	-	0,3,3	0.00	-
6	SO4	K	1004	-	4,4,4	0.19	0	6,6,6	0.07	0
4	1PE	K	1005	-	11,11,15	0.46	0	10,10,14	0.36	0
5	3MW	K	1006	2	26,28,28	2.19	5 (19%)	35,38,38	2.24	8 (22%)
7	DMS	K	1007	-	3,3,3	0.65	0	3,3,3	0.45	0
3	CO3	L	1002	-	0,3,3	0.00	-	0,3,3	0.00	-
6	SO4	L	1004	-	4,4,4	0.24	0	6,6,6	0.10	0
5	3MW	L	1005	2	26,28,28	2.23	4 (15%)	35,38,38	2.16	7 (20%)

In the following table, the Chirals column lists the number of chiral outliers, the number of chiral centers analysed, the number of these observed in the model and the number defined in the chemical component dictionary. Similar counts are reported in the Torsion and Rings columns. '-' means no outliers of that kind were identified.

Mol	Type	Chain	Res	Link	Chirals	Torsions	Rings
3	CO3	A	1002	-	-	0/0/0/0	0/0/0/0
4	1PE	A	1004	-	-	0/9/9/13	0/0/0/0
4	1PE	A	1005	-	-	0/5/5/13	0/0/0/0
5	3MW	A	1006	2	-	0/22/22/22	0/3/3/3
3	CO3	B	1002	-	-	0/0/0/0	0/0/0/0
6	SO4	B	1004	-	-	0/0/0/0	0/0/0/0
5	3MW	B	1005	2	-	0/22/22/22	0/3/3/3
3	CO3	C	1002	-	-	0/0/0/0	0/0/0/0
6	SO4	C	1004	-	-	0/0/0/0	0/0/0/0
4	1PE	C	1005	-	-	0/6/6/13	0/0/0/0
4	1PE	C	1006	-	-	0/5/5/13	0/0/0/0
5	3MW	C	1007	2	-	0/22/22/22	0/3/3/3
3	CO3	D	1002	-	-	0/0/0/0	0/0/0/0
5	3MW	D	1004	2	-	0/22/22/22	0/3/3/3
3	CO3	E	1002	-	-	0/0/0/0	0/0/0/0
6	SO4	E	1004	-	-	0/0/0/0	0/0/0/0
4	1PE	E	1005	-	-	0/9/9/13	0/0/0/0
4	1PE	E	1006	-	-	0/3/3/13	0/0/0/0
5	3MW	E	1007	2	-	0/22/22/22	0/3/3/3
3	CO3	F	1002	-	-	0/0/0/0	0/0/0/0
4	1PE	F	1004	-	-	0/4/4/13	0/0/0/0
5	3MW	F	1005	2	-	0/22/22/22	0/3/3/3
3	CO3	G	1002	-	-	0/0/0/0	0/0/0/0
6	SO4	G	1004	-	-	0/0/0/0	0/0/0/0

Continued on next page...

Continued from previous page...

Mol	Type	Chain	Res	Link	Chirals	Torsions	Rings
6	SO4	G	1005	-	-	0/0/0/0	0/0/0/0
4	1PE	G	1006	-	-	0/7/7/13	0/0/0/0
4	1PE	G	1007	-	-	0/10/10/13	0/0/0/0
5	3MW	G	1008	2	-	0/22/22/22	0/3/3/3
3	CO3	H	1002	-	-	0/0/0/0	0/0/0/0
4	1PE	H	1004	-	-	0/7/7/13	0/0/0/0
5	3MW	H	1005	2	-	0/22/22/22	0/3/3/3
3	CO3	I	1002	-	-	0/0/0/0	0/0/0/0
5	3MW	I	1004	2	-	0/22/22/22	0/3/3/3
3	CO3	J	1002	-	-	0/0/0/0	0/0/0/0
6	SO4	J	1004	-	-	0/0/0/0	0/0/0/0
5	3MW	J	1005	2	-	0/22/22/22	0/3/3/3
3	CO3	K	1002	-	-	0/0/0/0	0/0/0/0
6	SO4	K	1004	-	-	0/0/0/0	0/0/0/0
4	1PE	K	1005	-	-	0/9/9/13	0/0/0/0
5	3MW	K	1006	2	-	0/22/22/22	0/3/3/3
7	DMS	K	1007	-	-	0/0/0/0	0/0/0/0
3	CO3	L	1002	-	-	0/0/0/0	0/0/0/0
6	SO4	L	1004	-	-	0/0/0/0	0/0/0/0
5	3MW	L	1005	2	-	0/22/22/22	0/3/3/3

All (54) bond length outliers are listed below:

Mol	Chain	Res	Type	Atoms	Z	Observed(Å)	Ideal(Å)
5	J	1005	3MW	C03-C12	-7.63	1.39	1.52
5	L	1005	3MW	C03-C12	-7.60	1.39	1.52
5	I	1004	3MW	C03-C12	-7.52	1.39	1.52
5	G	1008	3MW	C03-C12	-7.51	1.39	1.52
5	B	1005	3MW	C03-C12	-7.42	1.40	1.52
5	E	1007	3MW	C03-C12	-7.39	1.40	1.52
5	D	1004	3MW	C03-C12	-7.34	1.40	1.52
5	A	1006	3MW	C03-C12	-7.34	1.40	1.52
5	K	1006	3MW	C03-C12	-7.32	1.40	1.52
5	C	1007	3MW	C03-C12	-7.32	1.40	1.52
5	H	1005	3MW	C03-C12	-7.11	1.40	1.52
5	F	1005	3MW	C03-C12	-7.07	1.40	1.52
5	J	1005	3MW	C06-N07	-5.43	1.33	1.44
5	F	1005	3MW	C06-N07	-5.41	1.33	1.44
5	L	1005	3MW	C06-N07	-5.40	1.33	1.44
5	D	1004	3MW	C06-N07	-5.38	1.33	1.44
5	A	1006	3MW	C06-N07	-5.35	1.33	1.44
5	E	1007	3MW	C06-N07	-5.33	1.33	1.44

Continued on next page...

Continued from previous page...

Mol	Chain	Res	Type	Atoms	Z	Observed(Å)	Ideal(Å)
5	G	1008	3MW	C06-N07	-5.31	1.33	1.44
5	K	1006	3MW	C06-N07	-5.30	1.33	1.44
5	B	1005	3MW	C06-N07	-5.29	1.33	1.44
5	I	1004	3MW	C06-N07	-5.26	1.33	1.44
5	C	1007	3MW	C06-N07	-5.21	1.33	1.44
5	H	1005	3MW	C06-N07	-5.16	1.33	1.44
5	H	1005	3MW	C19-C18	-5.12	1.39	1.50
5	E	1007	3MW	C19-C18	-5.07	1.39	1.50
5	J	1005	3MW	C19-C18	-5.05	1.39	1.50
5	K	1006	3MW	C19-C18	-5.04	1.39	1.50
5	I	1004	3MW	C19-C18	-5.02	1.39	1.50
5	C	1007	3MW	C19-C18	-5.02	1.39	1.50
5	G	1008	3MW	C19-C18	-5.01	1.39	1.50
5	B	1005	3MW	C19-C18	-4.99	1.39	1.50
5	A	1006	3MW	C19-C18	-4.98	1.39	1.50
5	L	1005	3MW	C19-C18	-4.97	1.39	1.50
5	D	1004	3MW	C19-C18	-4.97	1.39	1.50
5	F	1005	3MW	C19-C18	-4.90	1.39	1.50
5	E	1007	3MW	C11-C10	-2.23	1.32	1.37
5	D	1004	3MW	C11-C10	-2.21	1.32	1.37
5	F	1005	3MW	C11-C10	-2.21	1.32	1.37
5	B	1005	3MW	C11-C10	-2.21	1.32	1.37
5	G	1008	3MW	C11-C10	-2.18	1.32	1.37
5	C	1007	3MW	C11-C10	-2.17	1.33	1.37
5	J	1005	3MW	C11-C10	-2.15	1.33	1.37
5	L	1005	3MW	C11-C10	-2.15	1.33	1.37
5	K	1006	3MW	C11-C10	-2.09	1.33	1.37
5	A	1006	3MW	C11-N07	-2.09	1.33	1.36
5	I	1004	3MW	C11-C10	-2.07	1.33	1.37
5	H	1005	3MW	C11-C10	-2.07	1.33	1.37
5	A	1006	3MW	C11-C10	-2.07	1.33	1.37
5	K	1006	3MW	C11-N07	-2.06	1.33	1.36
5	J	1005	3MW	C11-N07	-2.03	1.33	1.36
5	I	1004	3MW	O17-N16	2.95	1.45	1.39
5	F	1005	3MW	O17-N16	3.28	1.45	1.39
5	C	1007	3MW	O17-N16	3.45	1.46	1.39

All (79) bond angle outliers are listed below:

Mol	Chain	Res	Type	Atoms	Z	Observed(°)	Ideal(°)
5	H	1005	3MW	C11-N07-N08	-3.84	109.29	111.94
5	I	1004	3MW	C11-N07-N08	-3.57	109.48	111.94

Continued on next page...

Continued from previous page...

Mol	Chain	Res	Type	Atoms	Z	Observed(°)	Ideal(°)
5	K	1006	3MW	C11-N07-N08	-3.52	109.51	111.94
5	A	1006	3MW	C11-N07-N08	-3.48	109.54	111.94
5	D	1004	3MW	C02-C03-C12	-3.45	115.05	120.80
5	A	1006	3MW	C02-C03-C12	-3.43	115.10	120.80
5	L	1005	3MW	C11-N07-N08	-3.33	109.64	111.94
5	L	1005	3MW	C02-C03-C12	-3.25	115.39	120.80
5	F	1005	3MW	C02-C03-C12	-3.16	115.54	120.80
5	G	1008	3MW	C11-N07-N08	-3.11	109.80	111.94
5	K	1006	3MW	C02-C03-C12	-3.09	115.66	120.80
5	J	1005	3MW	C11-N07-N08	-3.08	109.81	111.94
5	C	1007	3MW	C11-N07-N08	-3.08	109.81	111.94
5	H	1005	3MW	C02-C03-C12	-3.02	115.77	120.80
5	C	1007	3MW	C02-C03-C12	-3.01	115.79	120.80
5	G	1008	3MW	C02-C03-C12	-2.97	115.85	120.80
5	I	1004	3MW	C02-C03-C12	-2.92	115.94	120.80
5	B	1005	3MW	C02-C03-C12	-2.87	116.02	120.80
5	B	1005	3MW	C11-N07-N08	-2.80	110.01	111.94
5	D	1004	3MW	C11-N07-N08	-2.65	110.12	111.94
5	J	1005	3MW	C02-C03-C12	-2.62	116.45	120.80
5	E	1007	3MW	C11-N07-N08	-2.61	110.14	111.94
5	G	1008	3MW	O17-N16-C14	-2.60	116.18	119.86
5	K	1006	3MW	O17-N16-C14	-2.54	116.27	119.86
5	F	1005	3MW	C11-N07-N08	-2.54	110.19	111.94
5	A	1006	3MW	O17-N16-C14	-2.49	116.34	119.86
5	C	1007	3MW	O17-N16-C14	-2.45	116.40	119.86
5	G	1008	3MW	C05-C04-C03	-2.35	118.79	121.20
5	L	1005	3MW	O17-N16-C14	-2.30	116.62	119.86
5	E	1007	3MW	C02-C03-C12	-2.25	117.06	120.80
5	H	1005	3MW	O17-N16-C14	-2.21	116.74	119.86
5	F	1005	3MW	C05-C04-C03	-2.20	118.94	121.20
5	I	1004	3MW	C19-C18-N13	-2.19	113.03	116.93
5	L	1005	3MW	C05-C04-C03	-2.13	119.01	121.20
5	D	1004	3MW	C05-C04-C03	-2.12	119.03	121.20
5	K	1006	3MW	C19-C18-N13	-2.11	113.17	116.93
5	B	1005	3MW	C12-N13-C18	-2.08	119.14	122.55
5	D	1004	3MW	O17-N16-C14	-2.06	116.95	119.86
5	J	1005	3MW	C05-C04-C03	-2.05	119.10	121.20
5	B	1005	3MW	C05-C04-C03	-2.03	119.11	121.20
5	H	1005	3MW	C05-C04-C03	-2.01	119.13	121.20
5	K	1006	3MW	C05-C04-C03	-2.01	119.14	121.20
5	I	1004	3MW	C12-N13-C18	2.02	125.86	122.55
5	A	1006	3MW	C03-C12-N13	2.05	118.38	112.94

Continued on next page...

Continued from previous page...

Mol	Chain	Res	Type	Atoms	Z	Observed(°)	Ideal(°)
5	G	1008	3MW	C04-C03-C12	2.11	124.31	120.80
5	H	1005	3MW	C03-C12-N13	2.17	118.70	112.94
5	C	1007	3MW	C04-C03-C12	2.18	124.44	120.80
5	L	1005	3MW	C04-C03-C12	2.19	124.45	120.80
5	K	1006	3MW	C04-C03-C12	2.29	124.61	120.80
5	G	1008	3MW	C03-C12-N13	2.29	119.03	112.94
5	F	1005	3MW	C04-C03-C12	2.33	124.68	120.80
5	H	1005	3MW	C04-C03-C12	2.38	124.76	120.80
5	D	1004	3MW	C03-C12-N13	2.39	119.27	112.94
5	A	1006	3MW	C04-C03-C12	2.43	124.85	120.80
5	D	1004	3MW	C04-C03-C12	2.57	125.08	120.80
5	A	1006	3MW	C06-N07-N08	5.31	123.58	118.89
5	J	1005	3MW	C06-N07-N08	5.66	123.88	118.89
5	I	1004	3MW	C06-N07-N08	5.87	124.07	118.89
5	L	1005	3MW	C06-N07-N08	6.06	124.24	118.89
5	K	1006	3MW	C06-N07-N08	6.32	124.47	118.89
5	H	1005	3MW	C06-N07-N08	6.45	124.58	118.89
5	D	1004	3MW	C09-N08-N07	7.99	109.71	103.70
5	C	1007	3MW	C09-N08-N07	8.00	109.72	103.70
5	F	1005	3MW	C09-N08-N07	8.04	109.75	103.70
5	B	1005	3MW	C09-N08-N07	8.11	109.80	103.70
5	K	1006	3MW	C09-N08-N07	8.41	110.03	103.70
5	H	1005	3MW	C09-N08-N07	8.42	110.03	103.70
5	E	1007	3MW	C09-N08-N07	8.43	110.04	103.70
5	G	1008	3MW	C09-N08-N07	8.47	110.07	103.70
5	L	1005	3MW	C09-N08-N07	8.51	110.10	103.70
5	G	1008	3MW	C06-N07-N08	8.58	126.46	118.89
5	A	1006	3MW	C09-N08-N07	8.62	110.18	103.70
5	J	1005	3MW	C09-N08-N07	8.72	110.26	103.70
5	I	1004	3MW	C09-N08-N07	8.78	110.31	103.70
5	E	1007	3MW	C06-N07-N08	8.91	126.75	118.89
5	C	1007	3MW	C06-N07-N08	9.33	127.12	118.89
5	B	1005	3MW	C06-N07-N08	9.42	127.20	118.89
5	D	1004	3MW	C06-N07-N08	9.69	127.44	118.89
5	F	1005	3MW	C06-N07-N08	10.12	127.82	118.89

There are no chirality outliers.

There are no torsion outliers.

There are no ring outliers.

28 monomers are involved in 83 short contacts:

Mol	Chain	Res	Type	Clashes	Symm-Clashes
3	A	1002	CO3	1	0
4	A	1004	1PE	2	0
4	A	1005	1PE	2	0
5	A	1006	3MW	4	0
6	B	1004	SO4	3	0
5	B	1005	3MW	4	0
3	C	1002	CO3	1	0
4	C	1005	1PE	2	0
4	C	1006	1PE	11	0
5	C	1007	3MW	3	0
5	D	1004	3MW	1	0
3	E	1002	CO3	1	0
6	E	1004	SO4	1	0
4	E	1006	1PE	2	0
5	E	1007	3MW	5	0
5	F	1005	3MW	6	0
6	G	1004	SO4	3	0
4	G	1006	1PE	1	0
4	G	1007	1PE	8	0
5	G	1008	3MW	3	0
3	H	1002	CO3	1	0
5	H	1005	3MW	3	0
5	I	1004	3MW	3	0
6	J	1004	SO4	1	0
5	J	1005	3MW	4	0
5	K	1006	3MW	4	0
6	L	1004	SO4	2	0
5	L	1005	3MW	3	0

5.7 Other polymers [i](#)

There are no such residues in this entry.

5.8 Polymer linkage issues [i](#)

There are no chain breaks in this entry.

6 Fit of model and data ⓘ

6.1 Protein, DNA and RNA chains ⓘ

In the following table, the column labelled ‘#RSRZ> 2’ contains the number (and percentage) of RSRZ outliers, followed by percent RSRZ outliers for the chain as percentile scores relative to all X-ray entries and entries of similar resolution. The OWAB column contains the minimum, median, 95th percentile and maximum values of the occupancy-weighted average B-factor per residue. The column labelled ‘Q< 0.9’ lists the number of (and percentage) of residues with an average occupancy less than 0.9.

Mol	Chain	Analysed	<RSRZ>	#RSRZ>2	OWAB(Å ²)	Q<0.9
1	A	516/528 (97%)	-0.09	10 (1%) 70 66	6, 21, 50, 64	0
1	B	512/528 (96%)	0.06	19 (3%) 45 38	8, 26, 56, 71	0
1	C	518/528 (98%)	-0.06	15 (2%) 55 49	9, 23, 51, 73	0
1	D	514/528 (97%)	-0.14	9 (1%) 71 68	11, 23, 49, 77	0
1	E	510/528 (96%)	-0.06	4 (0%) 87 86	14, 24, 46, 69	0
1	F	510/528 (96%)	0.12	21 (4%) 41 34	10, 29, 56, 71	0
1	G	513/528 (97%)	0.06	12 (2%) 64 59	16, 28, 51, 78	0
1	H	511/528 (96%)	0.18	25 (4%) 33 27	14, 29, 63, 86	0
1	I	516/528 (97%)	0.03	11 (2%) 67 62	13, 27, 53, 85	0
1	J	511/528 (96%)	0.05	8 (1%) 74 72	21, 30, 49, 70	0
1	K	509/528 (96%)	0.11	9 (1%) 71 68	18, 29, 49, 68	0
1	L	509/528 (96%)	0.27	18 (3%) 48 40	26, 34, 56, 85	0
All	All	6149/6336 (97%)	0.04	161 (2%) 59 54	6, 28, 53, 86	0

All (161) RSRZ outliers are listed below:

Mol	Chain	Res	Type	RSRZ
1	A	364	ASP	5.1
1	F	255	THR	4.4
1	H	197	ASP	4.4
1	C	550	SER	4.0
1	A	136	GLY	4.0
1	D	260	ASN	3.9
1	H	181	ASN	3.8
1	L	254	SER	3.8
1	L	180	ASP	3.7
1	F	121	CYS	3.7
1	B	136	GLY	3.7

Continued on next page...

Continued from previous page...

Mol	Chain	Res	Type	RSRZ
1	H	180	ASP	3.6
1	A	362	LYS	3.5
1	B	195	VAL	3.5
1	I	549	SER	3.5
1	K	403	CYS	3.5
1	H	196	ALA	3.5
1	K	550	SER	3.5
1	J	603	ASP	3.4
1	J	549	SER	3.4
1	H	274	ALA	3.4
1	J	602	ASN	3.3
1	E	362	LYS	3.2
1	F	197	ASP	3.2
1	H	602	ASN	3.1
1	L	155	GLU	3.1
1	B	135	PRO	3.1
1	H	603	ASP	3.1
1	G	362	LYS	3.0
1	H	195	VAL	3.0
1	J	183	ASN	3.0
1	G	364	ASP	3.0
1	F	361	SER	3.0
1	B	511	ASN	3.0
1	I	550	SER	3.0
1	H	141	PRO	3.0
1	F	141	PRO	2.9
1	D	550	SER	2.9
1	K	197	ASP	2.9
1	I	419	GLU	2.9
1	G	160	GLU	2.9
1	H	363	GLY	2.9
1	H	362	LYS	2.9
1	K	507	GLU	2.9
1	L	550	SER	2.8
1	H	136	GLY	2.8
1	E	364	ASP	2.8
1	K	361	SER	2.8
1	L	121	CYS	2.8
1	G	136	GLY	2.8
1	C	199	SER	2.8
1	K	254	SER	2.8
1	H	232	LYS	2.8

Continued on next page...

Continued from previous page...

Mol	Chain	Res	Type	RSRZ
1	F	551	VAL	2.8
1	C	603	ASP	2.8
1	C	141	PRO	2.7
1	B	549	SER	2.7
1	H	276	THR	2.7
1	A	259	VAL	2.7
1	B	508	GLU	2.7
1	E	550	SER	2.7
1	B	137	LYS	2.7
1	B	550	SER	2.7
1	D	181	ASN	2.7
1	C	255	THR	2.7
1	H	508	GLU	2.6
1	F	273	ASN	2.6
1	H	511	ASN	2.6
1	L	255	THR	2.6
1	G	550	SER	2.6
1	E	551	VAL	2.6
1	K	86	SER	2.6
1	J	219	LEU	2.6
1	C	138	GLU	2.6
1	F	254	SER	2.6
1	B	362	LYS	2.6
1	I	603	ASP	2.6
1	H	119	GLY	2.6
1	H	273	ASN	2.6
1	F	428	ALA	2.5
1	B	180	ASP	2.5
1	L	93	SER	2.5
1	G	603	ASP	2.5
1	C	260	ASN	2.5
1	A	275	ASP	2.5
1	B	194	SER	2.5
1	L	184	SER	2.5
1	F	140	GLY	2.5
1	G	273	ASN	2.5
1	C	197	ASP	2.5
1	B	363	GLY	2.5
1	H	364	ASP	2.5
1	D	402	GLY	2.5
1	I	121	CYS	2.5
1	B	134	ASN	2.4

Continued on next page...

Continued from previous page...

Mol	Chain	Res	Type	RSRZ
1	C	273	ASN	2.4
1	K	420	ASN	2.4
1	B	196	ALA	2.4
1	F	231	ASP	2.4
1	C	568	ASN	2.4
1	F	550	SER	2.4
1	D	255	THR	2.4
1	G	163	GLU	2.4
1	D	218	LYS	2.4
1	A	363	GLY	2.4
1	L	134	ASN	2.4
1	I	150	ASP	2.4
1	C	363	GLY	2.4
1	A	258	ASN	2.4
1	G	254	SER	2.4
1	I	163	GLU	2.3
1	G	363	GLY	2.3
1	A	195	VAL	2.3
1	F	112	VAL	2.3
1	F	194	SER	2.3
1	C	136	GLY	2.3
1	L	276	THR	2.3
1	I	255	THR	2.3
1	K	406	VAL	2.3
1	A	254	SER	2.3
1	F	199	SER	2.3
1	I	136	GLY	2.3
1	H	138	GLU	2.2
1	D	549	SER	2.2
1	I	254	SER	2.2
1	H	549	SER	2.2
1	L	602	ASN	2.2
1	B	273	ASN	2.2
1	H	194	SER	2.2
1	F	157	LEU	2.2
1	J	97	THR	2.2
1	A	365	VAL	2.2
1	L	158	LYS	2.2
1	F	119	GLY	2.2
1	C	134	ASN	2.2
1	D	279	GLU	2.1
1	B	181	ASN	2.1

Continued on next page...

Continued from previous page...

Mol	Chain	Res	Type	RSRZ
1	B	364	ASP	2.1
1	G	196	ALA	2.1
1	B	197	ASP	2.1
1	H	179	ASN	2.1
1	L	603	ASP	2.1
1	H	550	SER	2.1
1	J	551	VAL	2.1
1	I	335	GLU	2.1
1	L	274	ALA	2.1
1	F	156	PHE	2.1
1	G	275	ASP	2.1
1	L	275	ASP	2.1
1	F	335	GLU	2.1
1	D	87	GLU	2.1
1	H	507	GLU	2.1
1	B	184	SER	2.1
1	L	197	ASP	2.0
1	L	364	ASP	2.0
1	F	123	VAL	2.0
1	C	507	GLU	2.0
1	J	163	GLU	2.0
1	C	274	ALA	2.0
1	F	183	ASN	2.0
1	L	140	GLY	2.0

6.2 Non-standard residues in protein, DNA, RNA chains [i](#)

There are no non-standard protein/DNA/RNA residues in this entry.

6.3 Carbohydrates [i](#)

There are no carbohydrates in this entry.

6.4 Ligands [i](#)

In the following table, the Atoms column lists the number of modelled atoms in the group and the number defined in the chemical component dictionary. LLDF column lists the quality of electron density of the group with respect to its neighbouring residues in protein, DNA or RNA chains. The B-factors column lists the minimum, median, 95th percentile and maximum values of B factors of atoms in the group. The column labelled 'Q < 0.9' lists the number of atoms with occupancy less than 0.9.

Mol	Type	Chain	Res	Atoms	RSCC	RSR	LLDF	B-factors(\AA^2)	Q<0.9
4	1PE	K	1005	12/16	0.91	0.30	3.91	31,38,45,49	0
6	SO4	G	1005	5/5	0.96	0.29	2.61	50,51,59,60	0
3	CO3	D	1002	4/4	0.98	0.22	2.34	14,15,15,15	0
4	1PE	F	1004	7/16	0.92	0.35	1.55	25,26,33,33	0
3	CO3	H	1002	4/4	0.96	0.20	1.31	17,18,18,18	0
3	CO3	K	1002	4/4	0.92	0.24	1.29	25,26,26,26	0
3	CO3	J	1002	4/4	0.94	0.22	1.20	25,28,30,36	0
4	1PE	E	1005	12/16	0.94	0.25	1.20	23,24,35,35	0
4	1PE	A	1004	12/16	0.81	0.24	1.14	35,42,50,52	0
4	1PE	C	1005	9/16	0.91	0.23	1.12	13,14,17,23	0
4	1PE	C	1006	8/16	0.95	0.19	0.93	19,25,32,36	0
3	CO3	E	1002	4/4	0.94	0.21	0.76	25,26,29,35	0
3	CO3	L	1002	4/4	0.94	0.25	0.58	29,29,32,39	0
3	CO3	B	1002	4/4	0.97	0.18	0.44	11,11,11,18	0
5	3MW	F	1005	26/26	0.92	0.20	0.41	22,30,38,42	0
4	1PE	G	1007	13/16	0.88	0.23	0.36	29,39,44,44	0
5	3MW	A	1006	26/26	0.94	0.17	0.34	14,25,32,36	0
5	3MW	D	1004	26/26	0.95	0.18	0.29	13,16,32,41	0
5	3MW	C	1007	26/26	0.94	0.17	0.21	11,12,18,24	0
3	CO3	C	1002	4/4	0.96	0.17	0.18	10,10,13,27	0
7	DMS	K	1007	4/4	0.92	0.25	0.16	28,35,48,53	0
5	3MW	J	1005	26/26	0.94	0.19	0.07	23,25,32,35	0
4	1PE	A	1005	8/16	0.94	0.17	-0.01	25,28,33,33	0
5	3MW	I	1004	26/26	0.94	0.17	-0.04	17,19,27,29	0
4	1PE	G	1006	10/16	0.91	0.19	-0.24	32,39,43,44	0
5	3MW	B	1005	26/26	0.95	0.16	-0.25	12,25,33,39	0
3	CO3	I	1002	4/4	0.97	0.17	-0.26	17,18,18,18	0
5	3MW	E	1007	26/26	0.96	0.17	-0.31	13,18,28,53	0
5	3MW	H	1005	26/26	0.95	0.16	-0.33	19,22,32,33	0
6	SO4	B	1004	5/5	0.96	0.16	-0.38	8,12,21,26	0
4	1PE	H	1004	10/16	0.93	0.16	-0.51	17,18,30,32	0
6	SO4	C	1004	5/5	0.92	0.21	-0.61	51,53,59,65	0
5	3MW	L	1005	26/26	0.94	0.17	-0.62	26,27,37,39	0
3	CO3	G	1002	4/4	0.97	0.17	-0.64	22,24,26,28	0
3	CO3	F	1002	4/4	0.98	0.15	-0.73	12,15,16,17	0
5	3MW	G	1008	26/26	0.94	0.16	-0.86	21,23,31,34	0
3	CO3	A	1002	4/4	0.97	0.14	-1.02	7,7,13,18	0
5	3MW	K	1006	26/26	0.95	0.16	-1.28	23,25,28,30	0
2	ZN	I	1001	1/1	0.98	0.14	-1.83	47,47,47,47	0
2	ZN	I	1003	1/1	0.98	0.12	-2.17	38,38,38,38	0
2	ZN	L	1001	1/1	0.99	0.05	-2.40	29,29,29,29	0
2	ZN	J	1001	1/1	0.98	0.06	-2.61	26,26,26,26	0
6	SO4	G	1004	5/5	0.98	0.12	-2.68	16,16,22,26	0

Continued on next page...

Continued from previous page...

Mol	Type	Chain	Res	Atoms	RSCC	RSR	LLDF	B-factors(\AA^2)	Q<0.9
2	ZN	B	1003	1/1	0.98	0.08	-2.69	34,34,34,34	0
2	ZN	E	1003	1/1	0.97	0.04	-2.72	36,36,36,36	0
2	ZN	B	1001	1/1	0.97	0.07	-2.74	15,15,15,15	0
2	ZN	K	1001	1/1	0.99	0.06	-2.76	26,26,26,26	0
2	ZN	J	1003	1/1	0.98	0.06	-2.90	32,32,32,32	0
2	ZN	L	1003	1/1	0.99	0.02	-3.08	29,29,29,29	0
2	ZN	E	1001	1/1	1.00	0.02	-3.10	15,15,15,15	0
6	SO4	E	1004	5/5	0.98	0.09	-3.21	23,23,30,34	0
2	ZN	D	1003	1/1	0.94	0.05	-3.33	41,41,41,41	0
2	ZN	C	1003	1/1	0.99	0.10	-3.55	33,33,33,33	0
2	ZN	D	1001	1/1	0.99	0.04	-3.65	31,31,31,31	0
2	ZN	H	1003	1/1	0.98	0.08	-3.69	40,40,40,40	0
2	ZN	F	1001	1/1	0.99	0.05	-3.76	24,24,24,24	0
2	ZN	F	1003	1/1	0.97	0.04	-4.25	28,28,28,28	0
2	ZN	C	1001	1/1	0.99	0.04	-4.79	18,18,18,18	0
2	ZN	K	1003	1/1	0.99	0.02	-4.88	26,26,26,26	0
6	SO4	J	1004	5/5	0.98	0.10	-4.90	30,30,31,31	0
2	ZN	A	1001	1/1	0.99	0.03	-5.13	27,27,27,27	0
2	ZN	H	1001	1/1	0.98	0.03	-5.48	18,18,18,18	0
2	ZN	A	1003	1/1	0.98	0.05	-5.54	31,31,31,31	0
2	ZN	G	1003	1/1	0.99	0.05	-6.29	27,27,27,27	0
2	ZN	G	1001	1/1	1.00	0.07	-7.03	31,31,31,31	0
4	1PE	E	1006	6/16	0.92	0.28	-	22,28,33,35	0
6	SO4	K	1004	5/5	0.97	0.35	-	49,51,57,59	0
6	SO4	L	1004	5/5	0.94	0.20	-	70,71,73,76	0

6.5 Other polymers [i](#)

There are no such residues in this entry.