



Full wwPDB X-ray Structure Validation Report ⓘ

Feb 1, 2016 – 12:24 PM GMT

PDB ID : 3R8F
Title : Replication initiator DnaA bound to AMPPCP and single-stranded DNA
Authors : Duderstadt, K.E.; Chuang, K.; Berger, J.M.
Deposited on : 2011-03-23
Resolution : 3.37 Å(reported)

This is a Full wwPDB X-ray Structure Validation Report for a publicly released PDB entry.
We welcome your comments at validation@mail.wwpdb.org
A user guide is available at
<http://wwpdb.org/validation/2016/XrayValidationReportHelp>
with specific help available everywhere you see the ⓘ symbol.

The following versions of software and data (see [references ⓘ](#)) were used in the production of this report:

MolProbity : 4.02b-467
Mogul : 1.7 (RC4), CSD as536be (2015)
Xtriage (Phenix) : 1.9-1692
EDS : rb-20026688
Percentile statistics : 20151230.v01 (using entries in the PDB archive December 30th 2015)
Refmac : 5.8.0135
CCP4 : 6.5.0
Ideal geometry (proteins) : Engh & Huber (2001)
Ideal geometry (DNA, RNA) : Parkinson et al. (1996)
Validation Pipeline (wwPDB-VP) : trunk26865

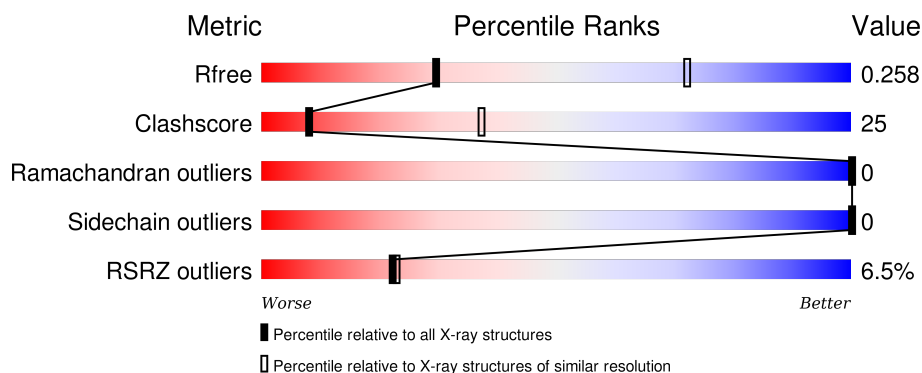
1 Overall quality at a glance

The following experimental techniques were used to determine the structure:

X-RAY DIFFRACTION

The reported resolution of this entry is 3.37 Å.

Percentile scores (ranging between 0-100) for global validation metrics of the entry are shown in the following graphic. The table shows the number of entries on which the scores are based.



Metric	Whole archive (#Entries)	Similar resolution (#Entries, resolution range(Å))
R_{free}	91344	1005 (3.42-3.30)
Clashscore	102246	1076 (3.42-3.30)
Ramachandran outliers	100387	1059 (3.42-3.30)
Sidechain outliers	100360	1058 (3.42-3.30)
RSRZ outliers	91569	1010 (3.42-3.30)

The table below summarises the geometric issues observed across the polymeric chains and their fit to the electron density. The red, orange, yellow and green segments on the lower bar indicate the fraction of residues that contain outliers for ≥ 3 , 2, 1 and 0 types of geometric quality criteria. A grey segment represents the fraction of residues that are not modelled. The numeric value for each fraction is indicated below the corresponding segment, with a dot representing fractions $\leq 5\%$. The upper red bar (where present) indicates the fraction of residues that have poor fit to the electron density. The numeric value is given above the bar.

Mol	Chain	Length	Quality of chain
1	A	324	<div> <div>4%</div> <div>67%</div> <div>32%</div> <div>.</div> </div>
1	B	324	<div> <div>4%</div> <div>65%</div> <div>33%</div> <div>.</div> </div>
1	C	324	<div> <div>10%</div> <div>65%</div> <div>34%</div> <div>.</div> </div>
1	D	324	<div> <div>7%</div> <div>67%</div> <div>31%</div> <div>.</div> </div>
2	E	12	<div> <div>17%</div> <div>92%</div> <div>8%</div> </div>

The following table lists non-polymeric compounds, carbohydrate monomers and non-standard residues in protein, DNA, RNA chains that are outliers for geometric or electron-density-fit criteria:

Mol	Type	Chain	Res	Chirality	Geometry	Clashes	Electron density
4	ACP	A	700	-	-	X	-
4	ACP	B	700	-	-	X	-
4	ACP	C	700	-	-	X	-
4	ACP	D	700	-	-	X	-

2 Entry composition

There are 5 unique types of molecules in this entry. The entry contains 10874 atoms, of which 0 are hydrogens and 0 are deuteriums.

In the tables below, the ZeroOcc column contains the number of atoms modelled with zero occupancy, the AltConf column contains the number of residues with at least one atom in alternate conformation and the Trace column contains the number of residues modelled with at most 2 atoms.

- Molecule 1 is a protein called Chromosomal replication initiator protein dnaA.

Mol	Chain	Residues	Atoms					ZeroOcc	AltConf	Trace
1	A	319	Total	C	N	O	S	0	0	0
			2618	1678	456	477	7			
1	B	319	Total	C	N	O	S	0	0	0
			2618	1678	456	477	7			
1	C	319	Total	C	N	O	S	0	0	0
			2618	1678	456	477	7			
1	D	319	Total	C	N	O	S	0	0	0
			2618	1678	456	477	7			

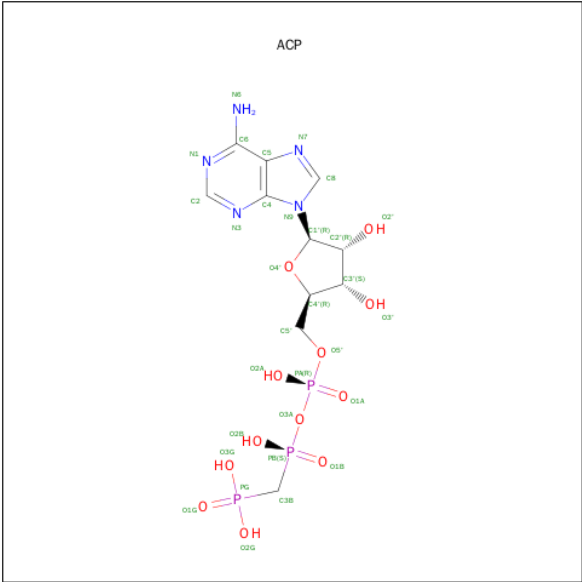
- Molecule 2 is a DNA chain called 5'-D(P*AP*AP*AP*AP*AP*AP*AP*AP*AP*AP*A)-3'.

Mol	Chain	Residues	Atoms					ZeroOcc	AltConf	Trace
2	E	12	Total	C	N	O	P	0	0	0
			252	120	60	60	12			

- Molecule 3 is MAGNESIUM ION (three-letter code: MG) (formula: Mg).

Mol	Chain	Residues	Atoms		ZeroOcc	AltConf
3	B	1	Total	Mg	0	0
			1	1		
3	A	1	Total	Mg	0	0
			1	1		
3	D	1	Total	Mg	0	0
			1	1		
3	C	1	Total	Mg	0	0
			1	1		

- Molecule 4 is PHOSPHOMETHYLPHOSPHONIC ACID ADENYLATE ESTER (three-letter code: ACP) (formula: C₁₁H₁₈N₅O₁₂P₃).



Mol	Chain	Residues	Atoms					ZeroOcc	AltConf
4	A	1	Total	C	N	O	P	0	0
			31	11	5	12	3		
4	B	1	Total	C	N	O	P	0	0
			31	11	5	12	3		
4	C	1	Total	C	N	O	P	0	0
			31	11	5	12	3		
4	D	1	Total	C	N	O	P	0	0
			31	11	5	12	3		

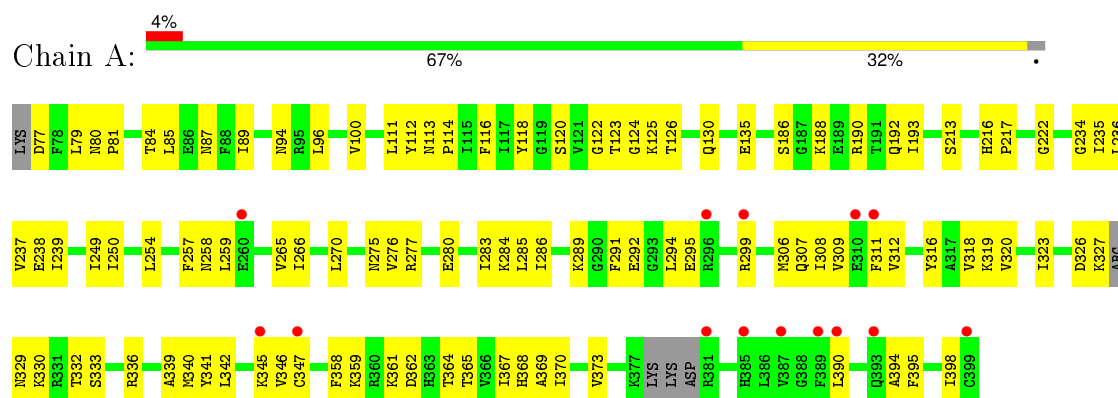
- Molecule 5 is water.

Mol	Chain	Residues	Atoms		ZeroOcc	AltConf
5	A	4	Total	O	0	0
			4	4		
5	B	5	Total	O	0	0
			5	5		
5	C	6	Total	O	0	0
			6	6		
5	D	6	Total	O	0	0
			6	6		
5	E	1	Total	O	0	0
			1	1		

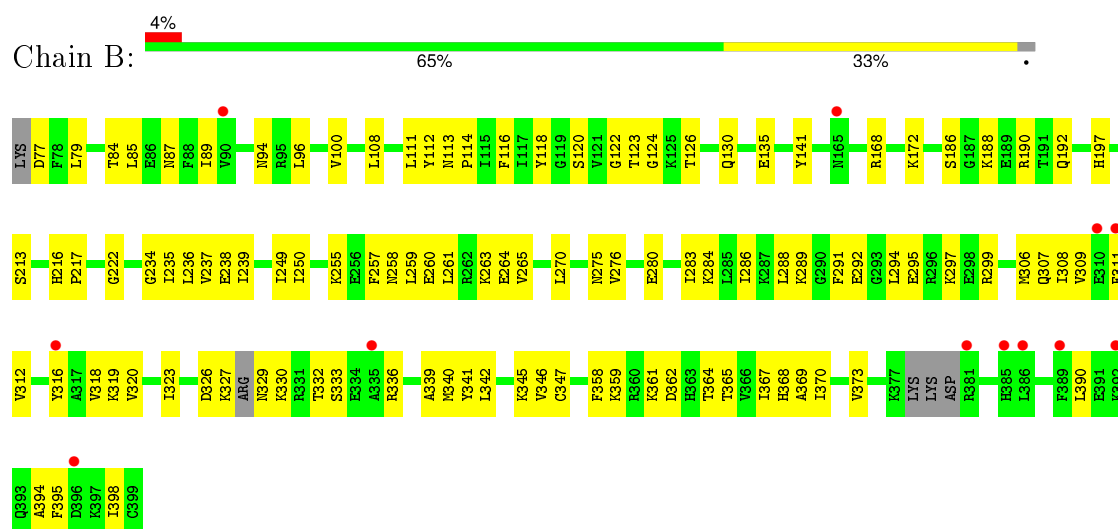
3 Residue-property plots

These plots are drawn for all protein, RNA and DNA chains in the entry. The first graphic for a chain summarises the proportions of errors displayed in the second graphic. The second graphic shows the sequence view annotated by issues in geometry and electron density. Residues are color-coded according to the number of geometric quality criteria for which they contain at least one outlier: green = 0, yellow = 1, orange = 2 and red = 3 or more. A red dot above a residue indicates a poor fit to the electron density ($RSRZ > 2$). Stretches of 2 or more consecutive residues without any outlier are shown as a green connector. Residues present in the sample, but not in the model, are shown in grey.

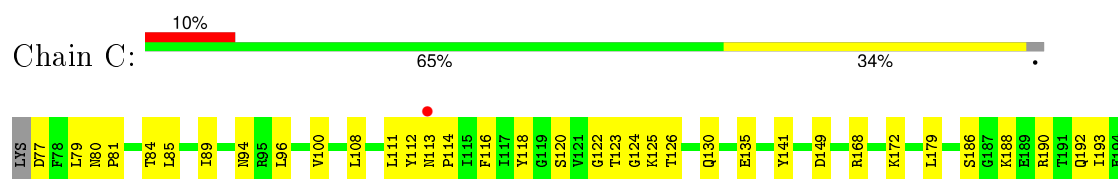
• Molecule 1: Chromosomal replication initiator protein dnaA



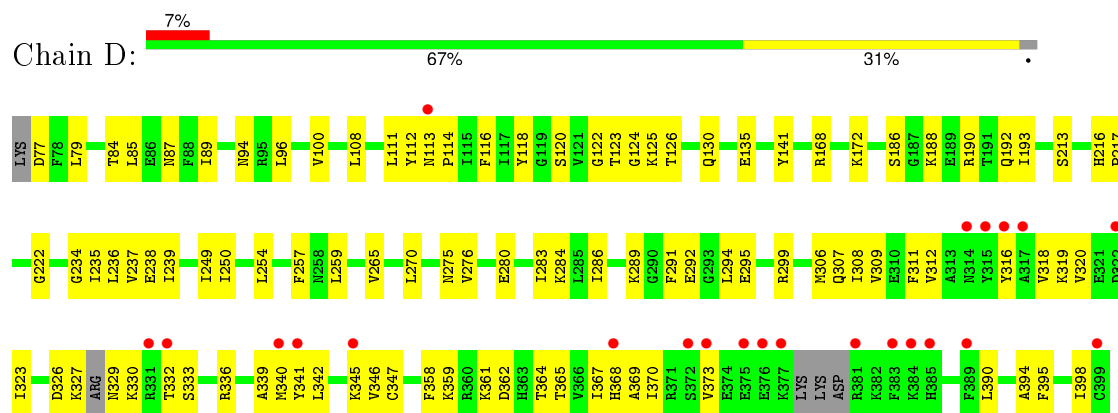
• Molecule 1: Chromosomal replication initiator protein dnaA



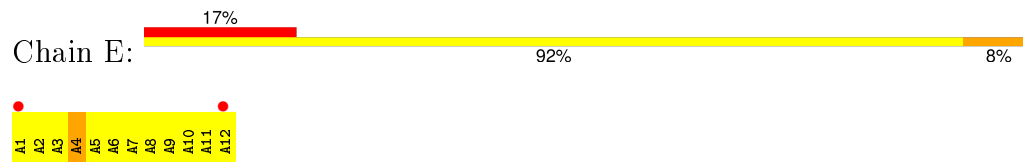
• Molecule 1: Chromosomal replication initiator protein dnaA



- Molecule 1: Chromosomal replication initiator protein dnaA



- Molecule 2: 5'-D(P*AP*AP*AP*AP*AP*AP*AP*AP*AP*AP*A)-3'



4 Data and refinement statistics

Property	Value	Source
Space group	P 21 21 21	Depositor
Cell constants a, b, c, α , β , γ	99.80 Å 114.22 Å 201.27 Å 90.00° 90.00° 90.00°	Depositor
Resolution (Å)	43.49 – 3.37 43.49 – 3.37	Depositor EDS
% Data completeness (in resolution range)	98.5 (43.49-3.37) 98.1 (43.49-3.37)	Depositor EDS
R_{merge}	(Not available)	Depositor
R_{sym}	0.09	Depositor
$\langle I/\sigma(I) \rangle$ ¹	2.06 (at 3.40 Å)	Xtriage
Refinement program	PHENIX (phenix.refine: 1.6.4_486)	Depositor
R, R_{free}	0.249 , 0.268 0.243 , 0.258	Depositor DCC
R_{free} test set	1663 reflections (5.36%)	DCC
Wilson B-factor (Å ²)	85.6	Xtriage
Anisotropy	0.444	Xtriage
Bulk solvent k_{sol} (e/Å ³), B_{sol} (Å ²)	0.30 , 90.7	EDS
Estimated twinning fraction	No twinning to report.	Xtriage
L-test for twinning ²	$\langle L \rangle = 0.49$, $\langle L^2 \rangle = 0.33$	Xtriage
Outliers	0 of 32815 reflections	Xtriage
F_o, F_c correlation	0.91	EDS
Total number of atoms	10874	wwPDB-VP
Average B, all atoms (Å ²)	108.0	wwPDB-VP

Xtriage's analysis on translational NCS is as follows: *The largest off-origin peak in the Patterson function is 4.43% of the height of the origin peak. No significant pseudotranslation is detected.*

¹Intensities estimated from amplitudes.

²Theoretical values of $\langle |L| \rangle$, $\langle L^2 \rangle$ for acentric reflections are 0.5, 0.375 respectively for untwinned datasets, and 0.333, 0.2 for perfectly twinned datasets.

5 Model quality [i](#)

5.1 Standard geometry [i](#)

Bond lengths and bond angles in the following residue types are not validated in this section: MG, ACP

The Z score for a bond length (or angle) is the number of standard deviations the observed value is removed from the expected value. A bond length (or angle) with $|Z| > 5$ is considered an outlier worth inspection. RMSZ is the root-mean-square of all Z scores of the bond lengths (or angles).

Mol	Chain	Bond lengths		Bond angles	
		RMSZ	# Z >5	RMSZ	# Z >5
1	A	0.25	0/2655	0.41	0/3548
1	B	0.24	0/2655	0.39	0/3548
1	C	0.24	0/2655	0.41	0/3548
1	D	0.24	0/2655	0.41	0/3548
2	E	0.45	0/287	0.97	1/440 (0.2%)
All	All	0.25	0/10907	0.43	1/14632 (0.0%)

There are no bond length outliers.

All (1) bond angle outliers are listed below:

Mol	Chain	Res	Type	Atoms	Z	Observed(°)	Ideal(°)
2	E	4	DA	C4'-C3'-C2'	-5.15	98.47	103.10

There are no chirality outliers.

There are no planarity outliers.

5.2 Too-close contacts [i](#)

In the following table, the Non-H and H(model) columns list the number of non-hydrogen atoms and hydrogen atoms in the chain respectively. The H(added) column lists the number of hydrogen atoms added and optimized by MolProbity. The Clashes column lists the number of clashes within the asymmetric unit, whereas Symm-Clashes lists symmetry related clashes.

Mol	Chain	Non-H	H(model)	H(added)	Clashes	Symm-Clashes
1	A	2618	0	2706	125	3
1	B	2618	0	2706	129	3
1	C	2618	0	2706	127	0
1	D	2618	0	2706	134	0
2	E	252	0	133	29	0

Continued on next page...

Continued from previous page...

Mol	Chain	Non-H	H(model)	H(added)	Clashes	Symm-Clashes
3	A	1	0	0	0	0
3	B	1	0	0	0	0
3	C	1	0	0	0	0
3	D	1	0	0	0	0
4	A	31	0	14	13	0
4	B	31	0	14	13	0
4	C	31	0	14	10	0
4	D	31	0	14	13	0
5	A	4	0	0	0	0
5	B	5	0	0	1	0
5	C	6	0	0	0	0
5	D	6	0	0	0	0
5	E	1	0	0	0	0
All	All	10874	0	11013	538	3

The all-atom clashscore is defined as the number of clashes found per 1000 atoms (including hydrogen atoms). The all-atom clashscore for this structure is 25.

All (538) close contacts within the same asymmetric unit are listed below, sorted by their clash magnitude.

Atom-1	Atom-2	Interatomic distance (Å)	Clash overlap (Å)
1:D:254:LEU:HD23	1:D:259:LEU:HD13	1.26	1.15
1:D:254:LEU:HD23	1:D:259:LEU:CD1	1.79	1.11
1:D:254:LEU:HA	1:D:259:LEU:HD12	1.09	1.08
1:B:124:GLY:HA2	4:B:700:ACP:O2A	1.61	1.00
1:D:340:MET:HG3	1:D:358:PHE:HE2	1.26	0.99
1:B:122:GLY:H	4:B:700:ACP:H3B1	1.26	0.98
1:B:124:GLY:CA	4:B:700:ACP:O2A	2.11	0.97
1:B:340:MET:HG3	1:B:358:PHE:HE2	1.26	0.97
1:A:340:MET:HG3	1:A:358:PHE:HE2	1.26	0.96
1:C:340:MET:HG3	1:C:358:PHE:HE2	1.26	0.96
1:D:254:LEU:CD2	1:D:259:LEU:HD13	1.97	0.95
2:E:4:DA:H2''	2:E:5:DA:H5''	1.47	0.94
1:B:340:MET:CG	1:B:358:PHE:CE2	2.52	0.93
1:A:340:MET:CG	1:A:358:PHE:CE2	2.52	0.92
1:C:340:MET:CG	1:C:358:PHE:CE2	2.52	0.92
1:B:188:LYS:O	1:B:192:GLN:HG3	1.69	0.92
1:C:188:LYS:O	1:C:192:GLN:HG3	1.70	0.92
1:D:340:MET:CG	1:D:358:PHE:CE2	2.52	0.92
1:C:111:LEU:CD1	1:C:112:TYR:CD2	2.53	0.92
2:E:7:DA:H2''	2:E:8:DA:H5''	1.52	0.91

Continued on next page...

Continued from previous page...

Atom-1	Atom-2	Interatomic distance (Å)	Clash overlap (Å)
1:B:111:LEU:CD1	1:B:112:TYR:CD2	2.53	0.91
2:E:10:DA:H2"	2:E:11:DA:H5"	1.52	0.91
1:D:111:LEU:CD1	1:D:112:TYR:CD2	2.53	0.91
1:D:188:LYS:O	1:D:192:GLN:HG3	1.70	0.91
1:A:111:LEU:CD1	1:A:112:TYR:CD2	2.53	0.91
1:A:188:LYS:O	1:A:192:GLN:HG3	1.70	0.90
1:A:122:GLY:H	4:A:700:ACP:H3B2	1.36	0.90
1:D:257:PHE:CD1	1:D:283:ILE:HG21	2.07	0.89
1:C:329:ASN:N	1:C:333:SER:HG	1.70	0.89
1:B:340:MET:HG2	1:B:358:PHE:CE2	2.08	0.88
1:C:340:MET:HG2	1:C:358:PHE:CE2	2.08	0.88
1:D:340:MET:HG2	1:D:358:PHE:CE2	2.08	0.88
1:A:340:MET:HG2	1:A:358:PHE:CE2	2.08	0.87
1:D:340:MET:HG3	1:D:358:PHE:CE2	2.10	0.87
1:C:122:GLY:H	4:C:700:ACP:H3B2	1.38	0.86
1:B:340:MET:HG3	1:B:358:PHE:CE2	2.10	0.85
1:D:122:GLY:H	4:D:700:ACP:H3B2	1.41	0.85
1:A:329:ASN:N	1:A:333:SER:HG	1.75	0.84
1:D:394:ALA:O	1:D:398:ILE:HB	1.78	0.84
1:C:394:ALA:O	1:C:398:ILE:HB	1.78	0.83
1:B:394:ALA:O	1:B:398:ILE:HB	1.78	0.83
1:C:340:MET:HG3	1:C:358:PHE:CE2	2.10	0.83
1:D:340:MET:CG	1:D:358:PHE:HE2	1.90	0.83
1:A:340:MET:HG3	1:A:358:PHE:CE2	2.10	0.83
1:B:259:LEU:HD21	1:B:286:ILE:HG21	1.61	0.83
1:B:329:ASN:N	1:B:333:SER:HG	1.77	0.83
1:A:394:ALA:O	1:A:398:ILE:HB	1.78	0.82
1:C:340:MET:CG	1:C:358:PHE:HE2	1.89	0.82
1:B:260:GLU:HG2	1:B:261:LEU:HG	1.61	0.82
1:B:340:MET:CG	1:B:358:PHE:HE2	1.90	0.81
1:B:122:GLY:H	4:B:700:ACP:C3B	1.94	0.81
1:D:329:ASN:N	1:D:333:SER:HG	1.78	0.80
1:D:254:LEU:CA	1:D:259:LEU:HD12	2.03	0.80
2:E:1:DA:H2"	2:E:2:DA:H5"	1.62	0.80
1:A:340:MET:CG	1:A:358:PHE:HE2	1.90	0.78
1:C:329:ASN:O	1:C:330:LYS:HB3	1.82	0.78
1:B:329:ASN:O	1:B:330:LYS:HB3	1.82	0.78
1:A:329:ASN:O	1:A:330:LYS:HB3	1.82	0.77
1:D:257:PHE:CD1	1:D:283:ILE:CG2	2.67	0.77
1:D:329:ASN:O	1:D:330:LYS:HB3	1.82	0.77
1:D:114:PRO:HG2	1:D:234:GLY:HA3	1.67	0.76

Continued on next page...

Continued from previous page...

Atom-1	Atom-2	Interatomic distance (Å)	Clash overlap (Å)
1:C:114:PRO:HG2	1:C:234:GLY:HA3	1.67	0.76
1:C:122:GLY:H	4:C:700:ACP:C3B	1.99	0.75
1:D:257:PHE:HD1	1:D:283:ILE:HG21	1.49	0.75
1:C:361:LYS:O	1:C:362:ASP:HB2	1.87	0.75
1:A:114:PRO:HG2	1:A:234:GLY:HA3	1.67	0.75
1:A:122:GLY:H	4:A:700:ACP:C3B	2.00	0.74
1:A:361:LYS:O	1:A:362:ASP:HB2	1.87	0.74
1:D:361:LYS:O	1:D:362:ASP:HB2	1.87	0.74
1:B:361:LYS:O	1:B:362:ASP:HB2	1.87	0.73
1:D:276:VAL:HG11	4:D:700:ACP:C8	2.18	0.73
1:B:114:PRO:HG2	1:B:234:GLY:HA3	1.67	0.73
1:A:254:LEU:HD23	1:A:259:LEU:HD12	1.70	0.73
1:C:190:ARG:HB3	2:E:5:DA:OP2	1.87	0.73
1:C:276:VAL:HG11	4:C:700:ACP:N9	2.04	0.73
1:D:113:ASN:HB3	1:D:114:PRO:HD3	1.72	0.72
1:B:323:ILE:HG12	1:B:336:ARG:HG2	1.72	0.72
1:D:323:ILE:HG12	1:D:336:ARG:HG2	1.72	0.72
1:A:122:GLY:N	4:A:700:ACP:H3B2	2.04	0.71
1:B:113:ASN:HB3	1:B:114:PRO:HD3	1.72	0.71
1:C:113:ASN:HB3	1:C:114:PRO:HD3	1.72	0.71
1:A:113:ASN:HB3	1:A:114:PRO:HD3	1.72	0.71
1:D:276:VAL:HG11	4:D:700:ACP:N9	2.06	0.71
1:D:122:GLY:H	4:D:700:ACP:C3B	2.04	0.70
1:D:254:LEU:HD23	1:D:259:LEU:HD12	1.69	0.70
1:C:122:GLY:N	4:C:700:ACP:H3B2	2.06	0.70
1:A:323:ILE:HG12	1:A:336:ARG:HG2	1.72	0.70
1:C:323:ILE:HG12	1:C:336:ARG:HG2	1.72	0.70
1:A:111:LEU:HD13	1:A:112:TYR:CD2	2.28	0.69
1:A:276:VAL:HG11	4:A:700:ACP:C8	2.23	0.68
1:D:124:GLY:HA2	4:D:700:ACP:O2A	1.93	0.68
1:B:111:LEU:HD13	1:B:112:TYR:CD2	2.28	0.68
1:D:265:VAL:HG22	1:D:291:PHE:CD1	2.29	0.68
1:B:255:LYS:HA	1:B:260:GLU:OE1	1.94	0.67
1:C:111:LEU:HD13	1:C:112:TYR:CD2	2.28	0.67
1:D:190:ARG:HB3	2:E:2:DA:OP2	1.93	0.67
1:B:111:LEU:HD13	1:B:112:TYR:CE2	2.30	0.66
1:D:111:LEU:HD13	1:D:112:TYR:CD2	2.28	0.66
1:D:340:MET:CE	1:D:358:PHE:HD2	2.08	0.66
1:C:111:LEU:HD13	1:C:112:TYR:CE2	2.30	0.66
1:B:111:LEU:HD12	1:B:112:TYR:CD2	2.30	0.66
1:A:111:LEU:HD13	1:A:112:TYR:CE2	2.30	0.66

Continued on next page...

Continued from previous page...

Atom-1	Atom-2	Interatomic distance (Å)	Clash overlap (Å)
1:C:340:MET:CE	1:C:358:PHE:HD2	2.08	0.66
1:C:111:LEU:HD12	1:C:112:TYR:CD2	2.30	0.66
1:D:250:ILE:HD12	1:D:270:LEU:HD23	1.78	0.66
1:D:111:LEU:HD12	1:D:112:TYR:CD2	2.30	0.66
1:C:394:ALA:HB1	1:C:398:ILE:HD12	1.78	0.66
1:B:216:HIS:CD2	1:B:236:LEU:HD21	2.31	0.66
1:D:216:HIS:CD2	1:D:236:LEU:HD21	2.31	0.66
1:D:254:LEU:CD2	1:D:259:LEU:CD1	2.64	0.66
1:B:340:MET:CE	1:B:358:PHE:HD2	2.08	0.66
1:A:340:MET:CE	1:A:358:PHE:HD2	2.08	0.66
1:D:122:GLY:N	4:D:700:ACP:H3B2	2.10	0.66
1:D:111:LEU:HD13	1:D:112:TYR:CE2	2.30	0.66
1:D:116:PHE:CE1	1:D:217:PRO:HD3	2.31	0.66
1:C:250:ILE:HD12	1:C:270:LEU:HD23	1.78	0.66
1:A:358:PHE:O	1:A:359:LYS:HB2	1.97	0.65
1:A:216:HIS:HD2	1:A:217:PRO:HD2	1.62	0.65
1:A:216:HIS:CD2	1:A:236:LEU:HD21	2.31	0.65
1:B:116:PHE:CE1	1:B:217:PRO:HD3	2.31	0.65
1:D:216:HIS:HD2	1:D:217:PRO:HD2	1.62	0.65
1:A:116:PHE:CE1	1:A:217:PRO:HD3	2.31	0.65
1:C:116:PHE:CE1	1:C:217:PRO:HD3	2.31	0.65
1:D:358:PHE:O	1:D:359:LYS:HB2	1.97	0.65
1:A:250:ILE:HD12	1:A:270:LEU:HD23	1.78	0.65
1:B:394:ALA:HB1	1:B:398:ILE:HD12	1.78	0.65
1:C:216:HIS:HD2	1:C:217:PRO:HD2	1.62	0.65
1:A:394:ALA:HB1	1:A:398:ILE:HD12	1.78	0.64
1:C:216:HIS:CD2	1:C:236:LEU:HD21	2.31	0.64
1:B:358:PHE:O	1:B:359:LYS:HB2	1.97	0.64
1:D:394:ALA:HB1	1:D:398:ILE:HD12	1.78	0.64
1:D:254:LEU:O	1:D:259:LEU:HB2	1.97	0.64
1:C:358:PHE:O	1:C:359:LYS:HB2	1.97	0.64
1:D:125:LYS:N	4:D:700:ACP:O2B	2.30	0.64
1:B:250:ILE:HD12	1:B:270:LEU:HD23	1.78	0.64
1:A:111:LEU:HD12	1:A:112:TYR:CD2	2.30	0.63
1:B:216:HIS:HD2	1:B:217:PRO:HD2	1.62	0.63
1:B:276:VAL:HG11	4:B:700:ACP:C8	2.28	0.63
1:D:113:ASN:HB3	1:D:114:PRO:CD	2.29	0.63
1:A:113:ASN:HB3	1:A:114:PRO:CD	2.29	0.62
1:D:257:PHE:HB2	1:D:259:LEU:HG	1.80	0.62
1:B:276:VAL:HG11	4:B:700:ACP:N9	2.14	0.62
1:C:257:PHE:CD1	1:C:283:ILE:CG2	2.82	0.62

Continued on next page...

Continued from previous page...

Atom-1	Atom-2	Interatomic distance (Å)	Clash overlap (Å)
1:B:341:TYR:HB2	1:B:373:VAL:HG11	1.82	0.62
1:C:113:ASN:HB3	1:C:114:PRO:CD	2.29	0.61
1:C:276:VAL:HG11	4:C:700:ACP:C8	2.30	0.61
1:C:341:TYR:HB2	1:C:373:VAL:HG11	1.82	0.61
1:B:113:ASN:HB3	1:B:114:PRO:CD	2.29	0.61
1:A:265:VAL:HG22	1:A:291:PHE:CD1	2.35	0.61
1:A:340:MET:HE3	1:A:358:PHE:HD2	1.65	0.61
1:A:341:TYR:HB2	1:A:373:VAL:HG11	1.82	0.61
1:B:190:ARG:HB3	2:E:8:DA:OP2	2.00	0.61
1:C:257:PHE:O	1:C:258:ASN:HB2	2.00	0.60
1:D:341:TYR:HB2	1:D:373:VAL:HG11	1.82	0.60
1:C:257:PHE:CE1	1:C:283:ILE:CG2	2.85	0.60
1:B:260:GLU:O	1:B:261:LEU:HB2	2.02	0.59
1:C:318:VAL:CG2	1:C:332:THR:HG22	2.32	0.59
1:B:124:GLY:C	4:B:700:ACP:O2A	2.40	0.59
1:A:318:VAL:CG2	1:A:332:THR:HG22	2.32	0.59
1:D:318:VAL:CG2	1:D:332:THR:HG22	2.32	0.59
1:B:318:VAL:CG2	1:B:332:THR:HG22	2.32	0.59
1:B:340:MET:HE3	1:B:358:PHE:HD2	1.68	0.59
1:A:276:VAL:HG11	4:A:700:ACP:N9	2.18	0.59
2:E:11:DA:H4'	2:E:11:DA:OP1	2.03	0.58
4:B:700:ACP:O2'	5:B:9:HOH:O	2.17	0.58
1:B:111:LEU:CD1	1:B:112:TYR:CE2	2.87	0.58
1:D:309:VAL:HG23	1:D:320:VAL:HG21	1.86	0.58
1:C:309:VAL:HG23	1:C:320:VAL:HG21	1.86	0.58
1:C:111:LEU:CD1	1:C:112:TYR:CE2	2.87	0.58
1:A:111:LEU:CD1	1:A:112:TYR:CE2	2.87	0.58
2:E:5:DA:H4'	2:E:5:DA:OP1	2.04	0.57
1:D:361:LYS:O	1:D:362:ASP:CB	2.52	0.57
1:B:309:VAL:HG23	1:B:320:VAL:HG21	1.86	0.57
1:A:309:VAL:HG23	1:A:320:VAL:HG21	1.86	0.57
1:C:257:PHE:CD1	1:C:283:ILE:HG21	2.39	0.57
1:C:318:VAL:HG12	1:C:319:LYS:N	2.19	0.57
1:B:361:LYS:O	1:B:362:ASP:CB	2.52	0.57
1:A:254:LEU:O	1:A:257:PHE:O	2.23	0.57
1:C:253:LYS:O	1:C:256:GLU:HB2	2.05	0.57
1:B:259:LEU:HD21	1:B:286:ILE:CG2	2.32	0.57
1:C:361:LYS:O	1:C:362:ASP:CB	2.52	0.57
1:B:308:ILE:HG13	1:B:309:VAL:N	2.20	0.57
1:C:308:ILE:HG13	1:C:309:VAL:N	2.20	0.57
1:D:123:THR:HG21	1:D:239:ILE:HB	1.87	0.57

Continued on next page...

Continued from previous page...

Atom-1	Atom-2	Interatomic distance (Å)	Clash overlap (Å)
1:B:123:THR:HG21	1:B:239:ILE:HB	1.87	0.56
1:A:361:LYS:O	1:A:362:ASP:CB	2.52	0.56
1:A:341:TYR:CE2	1:A:345:LYS:HG3	2.40	0.56
1:A:190:ARG:HB3	2:E:11:DA:OP2	2.04	0.56
1:B:341:TYR:CE2	1:B:345:LYS:HG3	2.40	0.56
1:D:318:VAL:HG12	1:D:319:LYS:N	2.19	0.56
1:B:122:GLY:N	4:B:700:ACP:H3B1	2.10	0.56
1:A:308:ILE:HG13	1:A:309:VAL:N	2.20	0.56
1:D:341:TYR:CE2	1:D:345:LYS:HG3	2.41	0.56
1:A:318:VAL:HG12	1:A:319:LYS:N	2.19	0.56
1:C:341:TYR:CE2	1:C:345:LYS:HG3	2.41	0.56
1:D:308:ILE:HG13	1:D:309:VAL:N	2.20	0.56
1:C:257:PHE:CE1	1:C:283:ILE:HG22	2.41	0.56
1:B:318:VAL:HG12	1:B:319:LYS:N	2.19	0.56
1:D:111:LEU:CD1	1:D:112:TYR:CE2	2.87	0.55
1:A:123:THR:HG21	1:A:239:ILE:HB	1.87	0.55
1:C:340:MET:HE3	1:C:358:PHE:HD2	1.71	0.55
1:A:125:LYS:N	4:A:700:ACP:O1B	2.39	0.55
1:D:340:MET:HE3	1:D:358:PHE:HD2	1.72	0.55
1:C:123:THR:HG21	1:C:239:ILE:HB	1.87	0.55
2:E:8:DA:H4'	2:E:8:DA:OP1	2.07	0.54
1:A:87:ASN:O	4:A:700:ACP:H2	2.07	0.54
1:A:265:VAL:HG12	1:A:266:ILE:N	2.22	0.54
1:C:364:THR:O	1:C:367:ILE:HG22	2.08	0.54
1:A:364:THR:O	1:A:367:ILE:HG22	2.08	0.54
1:C:77:ASP:OD2	1:C:79:LEU:HB2	2.08	0.54
1:C:318:VAL:CG1	1:C:319:LYS:N	2.71	0.54
1:D:259:LEU:HD11	1:D:283:ILE:HG23	1.89	0.53
1:B:364:THR:O	1:B:367:ILE:HG22	2.08	0.53
1:B:77:ASP:OD2	1:B:79:LEU:HB2	2.08	0.53
1:A:394:ALA:CB	1:A:398:ILE:HD12	2.38	0.53
1:D:364:THR:O	1:D:367:ILE:HG22	2.08	0.53
1:D:394:ALA:CB	1:D:398:ILE:HD12	2.39	0.53
1:B:318:VAL:CG1	1:B:319:LYS:N	2.71	0.53
1:D:276:VAL:HG21	4:D:700:ACP:N7	2.24	0.53
1:C:394:ALA:CB	1:C:398:ILE:HD12	2.39	0.53
1:A:77:ASP:OD2	1:A:79:LEU:HB2	2.08	0.53
1:C:125:LYS:N	4:C:700:ACP:O2B	2.42	0.53
1:A:318:VAL:CG1	1:A:319:LYS:N	2.71	0.53
1:A:254:LEU:O	1:A:259:LEU:HB2	2.08	0.53
1:D:318:VAL:CG1	1:D:319:LYS:N	2.71	0.53

Continued on next page...

Continued from previous page...

Atom-1	Atom-2	Interatomic distance (Å)	Clash overlap (Å)
1:D:340:MET:HE2	1:D:358:PHE:HD2	1.74	0.53
1:B:394:ALA:CB	1:B:398:ILE:HD12	2.39	0.53
1:A:340:MET:CE	1:A:358:PHE:CD2	2.91	0.52
1:D:124:GLY:CA	4:D:700:ACP:O2A	2.57	0.52
1:C:257:PHE:CE1	1:C:283:ILE:HG21	2.44	0.52
1:C:318:VAL:HG12	1:C:319:LYS:O	2.09	0.52
1:B:318:VAL:HG12	1:B:319:LYS:O	2.09	0.52
1:A:318:VAL:HG12	1:A:319:LYS:O	2.09	0.52
1:A:118:TYR:CZ	1:A:238:GLU:HB2	2.45	0.52
2:E:8:DA:H5"	2:E:8:DA:C8	2.45	0.52
1:A:326:ASP:O	1:A:327:LYS:CB	2.58	0.52
1:D:77:ASP:OD2	1:D:79:LEU:HB2	2.08	0.52
1:D:318:VAL:HG12	1:D:319:LYS:O	2.09	0.52
1:D:118:TYR:CZ	1:D:238:GLU:HB2	2.45	0.52
1:A:277:ARG:NH2	4:A:700:ACP:O1G	2.42	0.52
1:B:329:ASN:O	1:B:330:LYS:CB	2.56	0.52
1:B:260:GLU:O	1:B:261:LEU:CB	2.57	0.52
1:B:118:TYR:CZ	1:B:238:GLU:HB2	2.45	0.52
1:A:307:GLN:NE2	1:A:342:LEU:HB3	2.25	0.52
1:D:362:ASP:O	1:D:364:THR:HG23	2.10	0.52
1:B:326:ASP:O	1:B:327:LYS:CB	2.58	0.52
1:D:326:ASP:O	1:D:327:LYS:CB	2.58	0.52
1:C:362:ASP:O	1:C:364:THR:HG23	2.10	0.52
1:B:318:VAL:HG21	1:B:332:THR:HG22	1.92	0.52
1:D:89:ILE:HG21	1:D:249:ILE:HA	1.92	0.52
1:C:340:MET:CE	1:C:358:PHE:CD2	2.92	0.51
1:C:89:ILE:HG21	1:C:249:ILE:HA	1.92	0.51
1:D:318:VAL:HG21	1:D:332:THR:HG22	1.92	0.51
1:C:118:TYR:CZ	1:C:238:GLU:HB2	2.45	0.51
1:D:307:GLN:NE2	1:D:342:LEU:HB3	2.25	0.51
1:B:362:ASP:O	1:B:364:THR:HG23	2.10	0.51
1:B:307:GLN:NE2	1:B:342:LEU:HB3	2.25	0.51
1:D:340:MET:CE	1:D:358:PHE:CD2	2.92	0.51
1:A:362:ASP:O	1:A:364:THR:HG23	2.10	0.51
1:A:79:LEU:HA	1:A:130:GLN:HE22	1.75	0.51
1:D:340:MET:HE2	1:D:358:PHE:CD2	2.46	0.51
1:C:329:ASN:O	1:C:330:LYS:CB	2.56	0.51
1:C:79:LEU:HA	1:C:130:GLN:HE22	1.75	0.51
1:C:340:MET:HE2	1:C:358:PHE:HD2	1.75	0.51
1:C:307:GLN:NE2	1:C:342:LEU:HB3	2.25	0.51
1:C:318:VAL:HG21	1:C:332:THR:HG22	1.92	0.50

Continued on next page...

Continued from previous page...

Atom-1	Atom-2	Interatomic distance (Å)	Clash overlap (Å)
1:A:89:ILE:HG21	1:A:249:ILE:HA	1.92	0.50
4:C:700:ACP:O3G	4:C:700:ACP:O1B	2.30	0.50
1:B:118:TYR:HA	1:B:213:SER:O	2.12	0.50
1:A:122:GLY:CA	4:A:700:ACP:H3B2	2.42	0.50
1:B:79:LEU:HA	1:B:130:GLN:HE22	1.75	0.50
1:D:79:LEU:HA	1:D:130:GLN:HE22	1.75	0.50
1:B:89:ILE:HG21	1:B:249:ILE:HA	1.92	0.50
1:B:190:ARG:N	2:E:8:DA:OP2	2.45	0.50
1:B:308:ILE:HG22	1:B:339:ALA:HB1	1.94	0.50
1:A:318:VAL:HG21	1:A:332:THR:HG22	1.92	0.50
1:C:118:TYR:HA	1:C:213:SER:O	2.12	0.50
1:C:326:ASP:O	1:C:327:LYS:CB	2.58	0.50
1:A:118:TYR:HA	1:A:213:SER:O	2.12	0.50
1:B:85:LEU:HD12	1:B:135:GLU:HG3	1.94	0.50
1:A:308:ILE:HG22	1:A:339:ALA:HB1	1.94	0.50
2:E:11:DA:C8	2:E:11:DA:H5"	2.47	0.49
1:C:254:LEU:CD2	1:C:259:LEU:HD11	2.42	0.49
1:B:340:MET:CE	1:B:358:PHE:CD2	2.91	0.49
1:C:308:ILE:HG22	1:C:339:ALA:HB1	1.94	0.49
1:C:85:LEU:HD12	1:C:135:GLU:HG3	1.94	0.49
1:C:340:MET:HE2	1:C:358:PHE:CD2	2.48	0.49
1:A:307:GLN:OE1	1:A:398:ILE:HD13	2.13	0.49
1:A:120:SER:O	1:A:123:THR:OG1	2.22	0.49
1:A:295:GLU:O	1:A:299:ARG:HG3	2.13	0.49
1:C:295:GLU:O	1:C:299:ARG:HG3	2.13	0.49
1:D:85:LEU:HD12	1:D:135:GLU:HG3	1.94	0.49
2:E:5:DA:C8	2:E:5:DA:H5"	2.46	0.49
1:D:118:TYR:HA	1:D:213:SER:O	2.12	0.49
1:B:257:PHE:O	1:B:258:ASN:HB2	2.12	0.49
1:D:295:GLU:O	1:D:299:ARG:HG3	2.13	0.49
1:C:122:GLY:CA	4:C:700:ACP:H3B2	2.43	0.49
4:D:700:ACP:O3G	4:D:700:ACP:O1B	2.31	0.49
1:B:188:LYS:HB3	2:E:8:DA:OP1	2.12	0.49
1:A:257:PHE:CD1	1:A:283:ILE:HG21	2.48	0.49
4:B:700:ACP:O1G	4:B:700:ACP:O1B	2.31	0.48
1:D:308:ILE:HG22	1:D:339:ALA:HB1	1.94	0.48
1:B:307:GLN:OE1	1:B:398:ILE:HD13	2.13	0.48
1:D:186:SER:HA	1:D:222:GLY:O	2.14	0.48
1:C:342:LEU:O	1:C:346:VAL:HG12	2.14	0.48
1:D:329:ASN:O	1:D:330:LYS:CB	2.56	0.48
1:B:295:GLU:O	1:B:299:ARG:HG3	2.13	0.48

Continued on next page...

Continued from previous page...

Atom-1	Atom-2	Interatomic distance (Å)	Clash overlap (Å)
1:D:342:LEU:O	1:D:346:VAL:HG12	2.13	0.48
1:C:307:GLN:OE1	1:C:398:ILE:HD13	2.13	0.48
1:A:85:LEU:HD12	1:A:135:GLU:HG3	1.94	0.48
2:E:2:DA:OP1	2:E:2:DA:H4'	2.13	0.48
1:D:257:PHE:HB2	1:D:259:LEU:CG	2.43	0.48
2:E:7:DA:H2''	2:E:8:DA:C8	2.49	0.48
1:B:323:ILE:O	1:B:336:ARG:HD3	2.14	0.48
1:C:265:VAL:HA	1:C:291:PHE:CE1	2.49	0.48
1:A:280:GLU:O	1:A:284:LYS:HG3	2.14	0.48
2:E:11:DA:H8	2:E:11:DA:H5''	1.79	0.47
1:D:307:GLN:OE1	1:D:398:ILE:HD13	2.13	0.47
1:C:280:GLU:O	1:C:284:LYS:HG3	2.14	0.47
1:A:342:LEU:O	1:A:346:VAL:HG12	2.14	0.47
1:D:330:LYS:O	1:D:330:LYS:HG3	2.15	0.47
1:D:323:ILE:O	1:D:336:ARG:HD3	2.14	0.47
1:A:323:ILE:O	1:A:336:ARG:HD3	2.14	0.47
1:C:186:SER:HA	1:C:222:GLY:O	2.14	0.47
1:A:186:SER:HA	1:A:222:GLY:O	2.14	0.47
1:A:330:LYS:O	1:A:330:LYS:HG3	2.15	0.47
1:B:342:LEU:O	1:B:346:VAL:HG12	2.14	0.47
1:C:323:ILE:O	1:C:336:ARG:HD3	2.14	0.47
1:B:123:THR:HG22	1:B:239:ILE:HG21	1.96	0.47
1:B:346:VAL:HG23	1:B:395:PHE:CE1	2.50	0.47
1:D:217:PRO:HG2	1:D:236:LEU:HD11	1.97	0.47
1:B:280:GLU:O	1:B:284:LYS:HG3	2.14	0.47
1:D:286:ILE:HD12	1:D:294:LEU:HD22	1.97	0.47
1:C:330:LYS:O	1:C:330:LYS:HG3	2.15	0.47
1:D:346:VAL:HG23	1:D:395:PHE:CE1	2.50	0.47
1:C:346:VAL:HG23	1:C:395:PHE:CE1	2.50	0.47
1:A:277:ARG:NH1	4:A:700:ACP:O1G	2.47	0.47
1:C:286:ILE:HD12	1:C:294:LEU:HD22	1.97	0.47
1:B:120:SER:O	1:B:123:THR:OG1	2.22	0.47
2:E:8:DA:H2''	2:E:9:DA:O5'	2.15	0.47
1:B:326:ASP:O	1:B:327:LYS:HB3	2.15	0.47
1:D:280:GLU:O	1:D:284:LYS:HG3	2.14	0.47
1:C:265:VAL:HG22	1:C:291:PHE:CD1	2.49	0.47
1:A:286:ILE:HD12	1:A:294:LEU:HD22	1.97	0.47
1:B:87:ASN:O	4:B:700:ACP:H2	2.14	0.46
4:A:700:ACP:O3G	4:A:700:ACP:O2B	2.32	0.46
1:C:123:THR:HG22	1:C:239:ILE:HG21	1.96	0.46
1:A:346:VAL:HG23	1:A:395:PHE:CE1	2.50	0.46

Continued on next page...

Continued from previous page...

Atom-1	Atom-2	Interatomic distance (Å)	Clash overlap (Å)
1:B:330:LYS:HG3	1:B:330:LYS:O	2.15	0.46
1:A:292:GLU:H	1:A:292:GLU:CD	2.19	0.46
2:E:10:DA:H2''	2:E:11:DA:C8	2.51	0.46
1:B:286:ILE:HD12	1:B:294:LEU:HD22	1.97	0.46
1:A:96:LEU:HD23	1:A:100:VAL:HG23	1.98	0.46
1:B:340:MET:HE2	1:B:358:PHE:CD2	2.51	0.46
1:C:111:LEU:HD12	1:C:112:TYR:CG	2.51	0.46
1:D:265:VAL:HA	1:D:291:PHE:CE1	2.51	0.46
1:C:217:PRO:HG2	1:C:236:LEU:HD11	1.97	0.46
1:A:123:THR:HG22	1:A:239:ILE:HG21	1.96	0.46
1:C:123:THR:CG2	1:C:239:ILE:CG2	2.94	0.46
1:A:326:ASP:O	1:A:327:LYS:HB3	2.15	0.46
2:E:5:DA:H2''	2:E:6:DA:O5'	2.14	0.46
1:A:217:PRO:HG2	1:A:236:LEU:HD11	1.97	0.46
1:A:123:THR:CG2	1:A:239:ILE:CG2	2.94	0.46
1:D:326:ASP:O	1:D:327:LYS:HB3	2.15	0.46
1:B:292:GLU:H	1:B:292:GLU:CD	2.19	0.46
1:B:217:PRO:HG2	1:B:236:LEU:HD11	1.97	0.46
1:B:186:SER:HA	1:B:222:GLY:O	2.16	0.46
1:D:111:LEU:HD12	1:D:112:TYR:CG	2.51	0.45
1:C:94:ASN:HB3	1:C:239:ILE:HG23	1.98	0.45
1:D:123:THR:HG22	1:D:239:ILE:HG21	1.96	0.45
1:B:260:GLU:HG2	1:B:261:LEU:CG	2.41	0.45
1:C:292:GLU:H	1:C:292:GLU:CD	2.19	0.45
1:B:96:LEU:HD23	1:B:100:VAL:HG23	1.98	0.45
1:B:111:LEU:HD12	1:B:112:TYR:CG	2.51	0.45
1:D:276:VAL:CG1	4:D:700:ACP:C8	2.90	0.45
1:A:257:PHE:HD1	1:A:283:ILE:HG21	1.81	0.45
1:D:94:ASN:HB3	1:D:239:ILE:HG23	1.98	0.45
1:C:326:ASP:O	1:C:327:LYS:HB3	2.15	0.45
1:A:289:LYS:HE2	1:A:294:LEU:HD12	1.99	0.45
1:B:123:THR:CG2	1:B:239:ILE:CG2	2.94	0.45
1:D:292:GLU:H	1:D:292:GLU:CD	2.19	0.45
1:D:87:ASN:O	4:D:700:ACP:H2	2.17	0.45
1:A:398:ILE:CG2	1:A:398:ILE:O	2.65	0.45
2:E:4:DA:H2''	2:E:5:DA:C8	2.52	0.45
2:E:2:DA:H2''	2:E:3:DA:O5'	2.17	0.45
1:C:289:LYS:HE2	1:C:294:LEU:HD12	1.99	0.45
1:B:250:ILE:CD1	1:B:270:LEU:HD23	2.47	0.45
1:D:123:THR:CG2	1:D:239:ILE:CG2	2.94	0.45
1:A:111:LEU:HD12	1:A:112:TYR:CG	2.51	0.44

Continued on next page...

Continued from previous page...

Atom-1	Atom-2	Interatomic distance (Å)	Clash overlap (Å)
1:B:289:LYS:HE2	1:B:294:LEU:HD12	1.99	0.44
1:B:320:VAL:O	1:B:323:ILE:HG22	2.17	0.44
1:C:96:LEU:HD23	1:C:100:VAL:HG23	1.98	0.44
1:B:340:MET:HE2	1:B:358:PHE:HD2	1.78	0.44
2:E:8:DA:H5"	2:E:8:DA:H8	1.81	0.44
1:A:306:MET:HG3	1:A:309:VAL:HG12	1.99	0.44
1:B:94:ASN:HB3	1:B:239:ILE:HG23	1.98	0.44
1:D:190:ARG:HA	1:D:193:ILE:HD12	1.99	0.44
1:A:250:ILE:CD1	1:A:270:LEU:HD23	2.47	0.44
1:C:259:LEU:C	1:C:259:LEU:HD12	2.38	0.44
1:D:111:LEU:CD1	1:D:112:TYR:CG	3.01	0.44
1:A:216:HIS:HD2	1:A:217:PRO:CD	2.30	0.44
1:D:286:ILE:CD1	1:D:294:LEU:HD22	2.47	0.44
1:D:257:PHE:CD1	1:D:283:ILE:HG22	2.48	0.44
1:C:124:GLY:HA2	4:C:700:ACP:O2A	2.18	0.44
1:D:309:VAL:HG23	1:D:320:VAL:CG2	2.48	0.44
1:C:306:MET:HG3	1:C:309:VAL:HG12	1.99	0.44
1:D:96:LEU:HD23	1:D:100:VAL:HG23	1.98	0.44
1:C:320:VAL:O	1:C:323:ILE:HG22	2.17	0.44
1:C:286:ILE:CD1	1:C:294:LEU:HD22	2.48	0.44
1:C:111:LEU:CD1	1:C:112:TYR:CG	3.01	0.44
1:D:306:MET:HG3	1:D:309:VAL:HG12	1.99	0.44
1:A:84:THR:HG22	1:A:85:LEU:N	2.33	0.44
1:D:398:ILE:CG2	1:D:398:ILE:O	2.65	0.44
1:D:320:VAL:O	1:D:323:ILE:HG22	2.17	0.44
1:A:94:ASN:HB3	1:A:239:ILE:HG23	1.98	0.44
1:A:286:ILE:CD1	1:A:294:LEU:HD22	2.48	0.44
1:C:190:ARG:HA	1:C:193:ILE:HD12	2.00	0.43
1:A:111:LEU:CD1	1:A:112:TYR:CG	3.01	0.43
1:B:398:ILE:CG2	1:B:398:ILE:O	2.65	0.43
1:C:120:SER:O	1:C:123:THR:OG1	2.22	0.43
1:B:84:THR:HG22	1:B:85:LEU:N	2.33	0.43
1:A:311:PHE:CE1	1:A:390:LEU:HD22	2.53	0.43
1:D:254:LEU:O	1:D:259:LEU:CB	2.66	0.43
1:B:286:ILE:CD1	1:B:294:LEU:HD22	2.48	0.43
1:B:306:MET:HG3	1:B:309:VAL:HG12	1.99	0.43
1:C:311:PHE:CE1	1:C:390:LEU:HD22	2.53	0.43
1:D:257:PHE:CE1	1:D:283:ILE:HG21	2.51	0.43
1:A:340:MET:HE2	1:A:358:PHE:HD2	1.81	0.43
1:A:320:VAL:O	1:A:323:ILE:HG22	2.17	0.43
1:D:289:LYS:HE2	1:D:294:LEU:HD12	1.99	0.43

Continued on next page...

Continued from previous page...

Atom-1	Atom-2	Interatomic distance (Å)	Clash overlap (Å)
1:B:365:THR:O	1:B:369:ALA:HB2	2.19	0.43
1:D:122:GLY:O	1:D:275:ASN:HB2	2.19	0.43
1:C:250:ILE:CD1	1:C:270:LEU:HD23	2.47	0.43
1:C:126:THR:O	1:C:130:GLN:HG2	2.19	0.43
1:B:126:THR:O	1:B:130:GLN:HG2	2.19	0.43
1:A:365:THR:O	1:A:369:ALA:HB2	2.18	0.43
1:A:329:ASN:O	1:A:330:LYS:CB	2.56	0.43
2:E:1:DA:H2''	2:E:2:DA:C8	2.53	0.43
1:D:120:SER:O	1:D:123:THR:OG1	2.22	0.43
1:B:122:GLY:O	1:B:275:ASN:HB2	2.19	0.43
1:B:124:GLY:N	4:B:700:ACP:O2A	2.51	0.43
1:C:122:GLY:HA2	4:C:700:ACP:H3B2	2.00	0.43
1:A:126:THR:O	1:A:130:GLN:HG2	2.19	0.43
1:C:84:THR:HG22	1:C:85:LEU:N	2.33	0.43
1:A:122:GLY:O	1:A:275:ASN:HB2	2.19	0.43
1:C:398:ILE:O	1:C:398:ILE:CG2	2.65	0.43
1:D:84:THR:HG22	1:D:85:LEU:N	2.33	0.43
1:A:312:VAL:O	1:A:316:TYR:HB2	2.19	0.43
1:B:311:PHE:CE1	1:B:390:LEU:HD22	2.53	0.43
1:B:197:HIS:CE1	1:C:149:ASP:OD2	2.71	0.43
2:E:11:DA:H2''	2:E:12:DA:O5'	2.19	0.43
1:A:122:GLY:HA2	4:A:700:ACP:H3B2	2.00	0.43
1:C:262:ARG:HB2	1:C:265:VAL:HB	2.01	0.43
1:C:398:ILE:HG22	1:C:398:ILE:O	2.19	0.43
1:C:122:GLY:O	1:C:275:ASN:HB2	2.19	0.42
1:C:346:VAL:HG13	1:C:347:CYS:N	2.34	0.42
1:C:309:VAL:HG23	1:C:320:VAL:CG2	2.48	0.42
1:D:365:THR:O	1:D:369:ALA:HB2	2.18	0.42
1:C:365:THR:O	1:C:369:ALA:HB2	2.19	0.42
1:C:312:VAL:O	1:C:316:TYR:HB2	2.19	0.42
1:D:346:VAL:HG13	1:D:347:CYS:N	2.34	0.42
1:C:367:ILE:HG23	1:C:368:HIS:N	2.34	0.42
1:B:340:MET:HG2	1:B:358:PHE:CD2	2.53	0.42
1:D:370:ILE:O	1:D:373:VAL:HG12	2.20	0.42
1:D:126:THR:O	1:D:130:GLN:HG2	2.19	0.42
1:C:235:ILE:HG22	1:C:237:VAL:HG13	2.02	0.42
1:A:370:ILE:O	1:A:373:VAL:HG12	2.20	0.42
1:D:312:VAL:O	1:D:316:TYR:HB2	2.19	0.42
1:B:346:VAL:HG13	1:B:347:CYS:N	2.34	0.42
1:B:398:ILE:HG22	1:B:398:ILE:O	2.19	0.42
1:A:190:ARG:HA	1:A:193:ILE:HD12	2.00	0.42

Continued on next page...

Continued from previous page...

Atom-1	Atom-2	Interatomic distance (Å)	Clash overlap (Å)
1:D:122:GLY:CA	4:D:700:ACP:H3B2	2.48	0.42
1:D:398:ILE:HG22	1:D:398:ILE:O	2.19	0.42
1:A:398:ILE:O	1:A:398:ILE:HG22	2.19	0.42
1:D:367:ILE:HG23	1:D:368:HIS:N	2.35	0.42
1:A:309:VAL:HG23	1:A:320:VAL:CG2	2.48	0.42
1:C:257:PHE:CD1	1:C:283:ILE:HG22	2.55	0.42
1:A:96:LEU:HD21	1:B:288:LEU:HD23	2.02	0.42
1:B:235:ILE:HG22	1:B:237:VAL:HG13	2.02	0.42
1:B:312:VAL:O	1:B:316:TYR:HB2	2.19	0.42
1:B:346:VAL:HG23	1:B:395:PHE:CD1	2.55	0.42
1:B:394:ALA:CA	1:B:398:ILE:HD12	2.50	0.42
1:D:311:PHE:CE1	1:D:390:LEU:HD22	2.53	0.42
1:D:346:VAL:HG23	1:D:395:PHE:CD1	2.55	0.41
1:C:394:ALA:CA	1:C:398:ILE:HD12	2.50	0.41
1:B:111:LEU:CD1	1:B:112:TYR:CG	3.01	0.41
1:D:216:HIS:HD2	1:D:217:PRO:CD	2.30	0.41
1:A:340:MET:HE2	1:A:358:PHE:CD2	2.54	0.41
1:B:257:PHE:CE1	1:B:283:ILE:HG22	2.55	0.41
1:B:108:LEU:HD22	1:B:141:TYR:CD2	2.56	0.41
1:D:108:LEU:HD22	1:D:141:TYR:CD2	2.56	0.41
1:A:190:ARG:NH1	2:E:9:DA:H4'	2.36	0.41
1:A:346:VAL:HG13	1:A:347:CYS:N	2.34	0.41
1:A:257:PHE:CD1	1:A:283:ILE:CG2	3.04	0.41
1:B:370:ILE:O	1:B:373:VAL:HG12	2.20	0.41
1:C:254:LEU:HD22	1:C:259:LEU:HD11	2.02	0.41
1:C:108:LEU:HD22	1:C:141:TYR:CD2	2.56	0.41
1:D:394:ALA:CA	1:D:398:ILE:HD12	2.50	0.41
1:C:346:VAL:HG23	1:C:395:PHE:CD1	2.55	0.41
1:B:367:ILE:HG23	1:B:368:HIS:N	2.34	0.41
1:B:122:GLY:N	4:B:700:ACP:C3B	2.71	0.41
1:A:340:MET:HG2	1:A:358:PHE:CD2	2.54	0.41
1:A:394:ALA:CA	1:A:398:ILE:HD12	2.50	0.41
1:D:250:ILE:CD1	1:D:270:LEU:HD23	2.47	0.41
1:A:235:ILE:HG22	1:A:237:VAL:HG13	2.02	0.41
1:A:111:LEU:HD12	1:A:111:LEU:C	2.41	0.41
1:A:367:ILE:HG23	1:A:368:HIS:N	2.35	0.41
1:A:96:LEU:HD22	1:A:237:VAL:CG1	2.51	0.41
1:C:96:LEU:HD22	1:C:237:VAL:CG1	2.51	0.41
1:C:111:LEU:HD12	1:C:111:LEU:C	2.41	0.41
1:A:346:VAL:HG23	1:A:395:PHE:CD1	2.55	0.41
1:A:254:LEU:HD23	1:A:259:LEU:CD1	2.46	0.41

Continued on next page...

Continued from previous page...

Atom-1	Atom-2	Interatomic distance (Å)	Clash overlap (Å)
1:C:370:ILE:O	1:C:373:VAL:HG12	2.20	0.41
1:B:96:LEU:HD22	1:B:237:VAL:CG1	2.51	0.41
1:D:235:ILE:HG22	1:D:237:VAL:HG13	2.02	0.41
1:D:168:ARG:O	1:D:172:LYS:HG3	2.21	0.41
1:B:264:GLU:N	1:B:264:GLU:OE1	2.54	0.41
1:D:123:THR:HG22	1:D:239:ILE:CG2	2.51	0.41
1:C:80:ASN:HA	1:C:81:PRO:HD3	1.88	0.41
1:D:257:PHE:HB2	1:D:259:LEU:CD1	2.50	0.40
1:B:309:VAL:HG23	1:B:320:VAL:CG2	2.48	0.40
1:B:265:VAL:HA	1:B:291:PHE:CE1	2.56	0.40
1:B:264:GLU:HG2	1:B:265:VAL:N	2.36	0.40
1:B:111:LEU:HD12	1:B:111:LEU:C	2.42	0.40
1:B:123:THR:HG22	1:B:239:ILE:CG2	2.52	0.40
1:D:111:LEU:HD12	1:D:111:LEU:C	2.41	0.40
1:C:216:HIS:HD2	1:C:217:PRO:CD	2.30	0.40
1:A:238:GLU:OE1	1:B:297:LYS:HE3	2.21	0.40
1:A:285:LEU:HA	1:A:285:LEU:HD12	1.97	0.40
1:A:80:ASN:HA	1:A:81:PRO:HD3	1.88	0.40
1:B:190:ARG:HD3	2:E:7:DA:OP1	2.21	0.40
1:A:124:GLY:HA2	4:A:700:ACP:O1A	2.20	0.40
1:C:123:THR:HG22	1:C:239:ILE:CG2	2.52	0.40
1:D:96:LEU:HD22	1:D:237:VAL:CG1	2.51	0.40
1:B:168:ARG:O	1:B:172:LYS:HG3	2.21	0.40
1:D:323:ILE:HG12	1:D:336:ARG:CG	2.48	0.40
1:C:168:ARG:O	1:C:172:LYS:HG3	2.21	0.40
1:C:179:LEU:HD22	1:C:195:PHE:CE1	2.57	0.40

All (3) symmetry-related close contacts are listed below. The label for Atom-2 includes the symmetry operator and encoded unit-cell translations to be applied.

Atom-1	Atom-2	Interatomic distance (Å)	Clash overlap (Å)
1:A:292:GLU:OE2	1:B:258:ASN:OD1[4_545]	1.78	0.42
1:A:292:GLU:OE1	1:B:260:GLU:OE2[4_545]	2.11	0.09
1:A:258:ASN:OD1	1:B:263:LYS:CB[4_545]	2.14	0.06

5.3 Torsion angles

5.3.1 Protein backbone

In the following table, the Percentiles column shows the percent Ramachandran outliers of the chain as a percentile score with respect to all X-ray entries followed by that with respect to entries of similar resolution.

The Analysed column shows the number of residues for which the backbone conformation was analysed, and the total number of residues.

Mol	Chain	Analysed	Favoured	Allowed	Outliers	Percentiles	
1	A	313/324 (97%)	298 (95%)	15 (5%)	0	100	100
1	B	313/324 (97%)	297 (95%)	16 (5%)	0	100	100
1	C	313/324 (97%)	297 (95%)	16 (5%)	0	100	100
1	D	313/324 (97%)	296 (95%)	17 (5%)	0	100	100
All	All	1252/1296 (97%)	1188 (95%)	64 (5%)	0	100	100

There are no Ramachandran outliers to report.

5.3.2 Protein sidechains

In the following table, the Percentiles column shows the percent sidechain outliers of the chain as a percentile score with respect to all X-ray entries followed by that with respect to entries of similar resolution.

The Analysed column shows the number of residues for which the sidechain conformation was analysed, and the total number of residues.

Mol	Chain	Analysed	Rotameric	Outliers	Percentiles	
1	A	284/289 (98%)	284 (100%)	0	100	100
1	B	284/289 (98%)	284 (100%)	0	100	100
1	C	284/289 (98%)	284 (100%)	0	100	100
1	D	284/289 (98%)	284 (100%)	0	100	100
All	All	1136/1156 (98%)	1136 (100%)	0	100	100

There are no protein residues with a non-rotameric sidechain to report.

Some sidechains can be flipped to improve hydrogen bonding and reduce clashes. All (15) such sidechains are listed below:

Mol	Chain	Res	Type
1	A	130	GLN
1	A	197	HIS
1	A	216	HIS
1	A	218	GLN
1	B	130	GLN
1	B	197	HIS
1	B	216	HIS
1	B	218	GLN
1	C	87	ASN
1	C	130	GLN
1	C	216	HIS
1	C	218	GLN
1	D	130	GLN
1	D	216	HIS
1	D	218	GLN

5.3.3 RNA [i](#)

There are no RNA molecules in this entry.

5.4 Non-standard residues in protein, DNA, RNA chains [i](#)

There are no non-standard protein/DNA/RNA residues in this entry.

5.5 Carbohydrates [i](#)

There are no carbohydrates in this entry.

5.6 Ligand geometry [i](#)

Of 8 ligands modelled in this entry, 4 are monoatomic - leaving 4 for Mogul analysis.

In the following table, the Counts columns list the number of bonds (or angles) for which Mogul statistics could be retrieved, the number of bonds (or angles) that are observed in the model and the number of bonds (or angles) that are defined in the chemical component dictionary. The Link column lists molecule types, if any, to which the group is linked. The Z score for a bond length (or angle) is the number of standard deviations the observed value is removed from the expected value. A bond length (or angle) with $|Z| > 2$ is considered an outlier worth inspection. RMSZ is the root-mean-square of all Z scores of the bond lengths (or angles).

Mol	Type	Chain	Res	Link	Bond lengths			Bond angles		
					Counts	RMSZ	# Z > 2	Counts	RMSZ	# Z > 2
4	ACP	A	700	3	25,33,33	1.56	7 (28%)	31,52,52	2.14	3 (9%)
4	ACP	B	700	3	25,33,33	1.56	6 (24%)	31,52,52	2.12	3 (9%)
4	ACP	C	700	3	25,33,33	1.55	7 (28%)	31,52,52	2.12	3 (9%)
4	ACP	D	700	3	25,33,33	1.55	7 (28%)	31,52,52	2.13	3 (9%)

In the following table, the Chirals column lists the number of chiral outliers, the number of chiral centers analysed, the number of these observed in the model and the number defined in the chemical component dictionary. Similar counts are reported in the Torsion and Rings columns. '-' means no outliers of that kind were identified.

Mol	Type	Chain	Res	Link	Chirals	Torsions	Rings
4	ACP	A	700	3	-	0/15/38/38	0/3/3/3
4	ACP	B	700	3	-	0/15/38/38	0/3/3/3
4	ACP	C	700	3	-	0/15/38/38	0/3/3/3
4	ACP	D	700	3	-	0/15/38/38	0/3/3/3

All (27) bond length outliers are listed below:

Mol	Chain	Res	Type	Atoms	Z	Observed(Å)	Ideal(Å)
4	A	700	ACP	PB-O2B	-2.57	1.50	1.56
4	B	700	ACP	O4'-C4'	-2.56	1.39	1.45
4	D	700	ACP	O4'-C4'	-2.55	1.39	1.45
4	A	700	ACP	O4'-C4'	-2.55	1.39	1.45
4	D	700	ACP	PB-O2B	-2.54	1.50	1.56
4	C	700	ACP	PB-O2B	-2.53	1.50	1.56
4	B	700	ACP	PB-O2B	-2.52	1.50	1.56
4	C	700	ACP	O4'-C4'	-2.52	1.39	1.45
4	A	700	ACP	C2'-C3'	-2.17	1.47	1.53
4	D	700	ACP	C2'-C3'	-2.16	1.47	1.53
4	C	700	ACP	C2'-C3'	-2.16	1.47	1.53
4	B	700	ACP	C2'-C3'	-2.13	1.47	1.53
4	B	700	ACP	O2'-C2'	-2.12	1.37	1.43
4	C	700	ACP	O3'-C3'	-2.10	1.37	1.43
4	B	700	ACP	O3'-C3'	-2.10	1.37	1.43
4	A	700	ACP	O2'-C2'	-2.09	1.37	1.43
4	A	700	ACP	O3'-C3'	-2.09	1.38	1.43
4	D	700	ACP	O2'-C2'	-2.09	1.38	1.43
4	C	700	ACP	O2'-C2'	-2.08	1.38	1.43
4	D	700	ACP	O3'-C3'	-2.05	1.38	1.43
4	A	700	ACP	PG-O3G	-2.03	1.50	1.54
4	C	700	ACP	PG-O3G	-2.01	1.50	1.54

Continued on next page...

Continued from previous page...

Mol	Chain	Res	Type	Atoms	Z	Observed(Å)	Ideal(Å)
4	D	700	ACP	PG-O3G	-2.00	1.50	1.54
4	A	700	ACP	C6-N6	2.70	1.43	1.34
4	C	700	ACP	C6-N6	2.71	1.43	1.34
4	D	700	ACP	C6-N6	2.72	1.43	1.34
4	B	700	ACP	C6-N6	2.74	1.43	1.34

All (12) bond angle outliers are listed below:

Mol	Chain	Res	Type	Atoms	Z	Observed(°)	Ideal(°)
4	A	700	ACP	N3-C2-N1	-9.30	121.78	128.89
4	B	700	ACP	N3-C2-N1	-9.25	121.81	128.89
4	D	700	ACP	N3-C2-N1	-9.23	121.83	128.89
4	C	700	ACP	N3-C2-N1	-9.18	121.86	128.89
4	D	700	ACP	PA-O3A-PB	-4.72	119.47	132.73
4	A	700	ACP	PA-O3A-PB	-4.72	119.48	132.73
4	B	700	ACP	PA-O3A-PB	-4.71	119.49	132.73
4	C	700	ACP	PA-O3A-PB	-4.70	119.53	132.73
4	A	700	ACP	C2'-C1'-N9	-2.92	109.83	114.29
4	D	700	ACP	C2'-C1'-N9	-2.91	109.84	114.29
4	C	700	ACP	C2'-C1'-N9	-2.90	109.86	114.29
4	B	700	ACP	C2'-C1'-N9	-2.90	109.86	114.29

There are no chirality outliers.

There are no torsion outliers.

There are no ring outliers.

4 monomers are involved in 49 short contacts:

Mol	Chain	Res	Type	Clashes	Symm-Clashes
4	A	700	ACP	13	0
4	B	700	ACP	13	0
4	C	700	ACP	10	0
4	D	700	ACP	13	0

5.7 Other polymers ⓘ

There are no such residues in this entry.

5.8 Polymer linkage issues

There are no chain breaks in this entry.

6 Fit of model and data

6.1 Protein, DNA and RNA chains

In the following table, the column labelled ‘#RSRZ> 2’ contains the number (and percentage) of RSRZ outliers, followed by percent RSRZ outliers for the chain as percentile scores relative to all X-ray entries and entries of similar resolution. The OWAB column contains the minimum, median, 95th percentile and maximum values of the occupancy-weighted average B-factor per residue. The column labelled ‘Q< 0.9’ lists the number of (and percentage) of residues with an average occupancy less than 0.9.

Mol	Chain	Analysed	<RSRZ>	#RSRZ>2	OWAB(Å ²)	Q<0.9
1	A	319/324 (98%)	0.14	14 (4%) 38 37	42, 84, 203, 303	0
1	B	319/324 (98%)	0.12	12 (3%) 44 44	41, 89, 189, 391	0
1	C	319/324 (98%)	0.31	33 (10%) 9 9	47, 96, 210, 359	0
1	D	319/324 (98%)	0.22	23 (7%) 18 19	42, 90, 215, 341	0
2	E	12/12 (100%)	1.58	2 (16%) 2 2	101, 125, 183, 202	0
All	All	1288/1308 (98%)	0.21	84 (6%) 22 23	41, 90, 208, 391	0

All (84) RSRZ outliers are listed below:

Mol	Chain	Res	Type	RSRZ
1	C	311	PHE	6.3
1	D	381	ARG	5.3
1	C	375	GLU	4.7
1	A	296	ARG	4.3
1	C	331	ARG	4.1
1	D	368	HIS	4.1
1	C	316	TYR	4.0
1	B	311	PHE	3.9
1	A	389	PHE	3.7
1	C	315	TYR	3.7
1	C	310	GLU	3.7
1	B	335	ALA	3.6
1	D	383	PHE	3.6
1	C	389	PHE	3.5
1	C	345	LYS	3.5
1	C	388	GLY	3.4
1	B	310	GLU	3.3
1	D	322	ASP	3.1
1	A	387	VAL	3.1
1	A	260	GLU	3.1

Continued on next page...

Continued from previous page...

Mol	Chain	Res	Type	RSRZ
1	D	399	CYS	3.0
1	B	385	HIS	3.0
1	C	322	ASP	3.0
1	D	373	VAL	3.0
1	A	310	GLU	3.0
1	C	387	VAL	3.0
1	D	315	TYR	3.0
1	D	385	HIS	2.9
1	D	316	TYR	2.9
1	D	314	ASN	2.9
1	C	312	VAL	2.9
1	D	375	GLU	2.8
1	A	385	HIS	2.8
1	C	376	GLU	2.8
1	A	345	LYS	2.8
1	A	399	CYS	2.7
1	C	384	LYS	2.7
1	B	389	PHE	2.7
1	A	381	ARG	2.7
1	C	391	GLU	2.6
1	C	399	CYS	2.6
1	C	341	TYR	2.6
1	C	338	ILE	2.5
1	C	317	ALA	2.5
1	B	386	LEU	2.5
1	C	291	PHE	2.5
1	D	340	MET	2.5
1	C	368	HIS	2.5
2	E	12	DA	2.5
1	C	321	GLU	2.5
1	D	377	LYS	2.5
1	A	311	PHE	2.5
1	C	319	LYS	2.4
1	A	393	GLN	2.4
1	B	392	LYS	2.4
1	C	390	LEU	2.4
1	D	317	ALA	2.4
1	D	384	LYS	2.4
1	D	331	ARG	2.4
1	B	165	ASN	2.4
1	C	396	ASP	2.4
1	C	372	SER	2.3

Continued on next page...

Continued from previous page...

Mol	Chain	Res	Type	RSRZ
1	B	381	ARG	2.3
1	A	299	ARG	2.3
1	D	376	GLU	2.2
1	C	304	LYS	2.2
1	C	392	LYS	2.2
1	A	390	LEU	2.2
1	C	344	ARG	2.2
1	D	332	THR	2.2
1	D	345	LYS	2.1
1	C	381	ARG	2.1
2	E	1	DA	2.1
1	A	347	CYS	2.1
1	C	398	ILE	2.1
1	B	396	ASP	2.1
1	D	389	PHE	2.1
1	C	318	VAL	2.1
1	B	316	TYR	2.1
1	C	113	ASN	2.0
1	D	372	SER	2.0
1	D	113	ASN	2.0
1	D	341	TYR	2.0
1	B	90	VAL	2.0

6.2 Non-standard residues in protein, DNA, RNA chains [i](#)

There are no non-standard protein/DNA/RNA residues in this entry.

6.3 Carbohydrates [i](#)

There are no carbohydrates in this entry.

6.4 Ligands [i](#)

In the following table, the Atoms column lists the number of modelled atoms in the group and the number defined in the chemical component dictionary. LLDF column lists the quality of electron density of the group with respect to its neighbouring residues in protein, DNA or RNA chains. The B-factors column lists the minimum, median, 95th percentile and maximum values of B factors of atoms in the group. The column labelled 'Q < 0.9' lists the number of atoms with occupancy less than 0.9.

Mol	Type	Chain	Res	Atoms	RSCC	RSR	LLDF	B-factors(\AA^2)	Q<0.9
4	ACP	C	700	31/31	0.93	0.26	1.20	55,69,85,90	0
4	ACP	D	700	31/31	0.95	0.23	0.94	43,73,84,93	0
4	ACP	A	700	31/31	0.95	0.22	0.33	33,66,83,85	0
4	ACP	B	700	31/31	0.92	0.25	0.24	42,68,82,88	0
3	MG	B	401	1/1	0.90	0.54	-	48,48,48,48	0
3	MG	D	401	1/1	0.96	0.28	-	50,50,50,50	0
3	MG	C	401	1/1	0.89	0.45	-	67,67,67,67	0
3	MG	A	401	1/1	0.95	0.33	-	65,65,65,65	0

6.5 Other polymers [i](#)

There are no such residues in this entry.