



Full wwPDB X-ray Structure Validation Report ⓘ

Feb 1, 2016 – 05:33 AM GMT

PDB ID : 2R9J
Title : Ligand recognition in C-lobe: The crystal structure of the complex of lactoferrin C-lobe with nicotinamide at 2.5 Å resolution
Authors : Mir, R.; Vikram, G.; Singh, N.; Kumar, S.; Sinha, M.; Sharma, S.; Kaur, P.; Singh, T.P.
Deposited on : 2007-09-13
Resolution : 2.55 Å(reported)

This is a Full wwPDB X-ray Structure Validation Report for a publicly released PDB entry.
We welcome your comments at validation@mail.wwpdb.org
A user guide is available at
<http://wwpdb.org/validation/2016/XrayValidationReportHelp>
with specific help available everywhere you see the ⓘ symbol.

The following versions of software and data (see [references ⓘ](#)) were used in the production of this report:

MolProbity : 4.02b-467
Mogul : 1.7 (RC4), CSD as536be (2015)
Xtriage (Phenix) : **NOT EXECUTED**
EDS : **NOT EXECUTED**
Percentile statistics : 20151230.v01 (using entries in the PDB archive December 30th 2015)
Ideal geometry (proteins) : Engh & Huber (2001)
Ideal geometry (DNA, RNA) : Parkinson et al. (1996)
Validation Pipeline (wwPDB-VP) : trunk26865

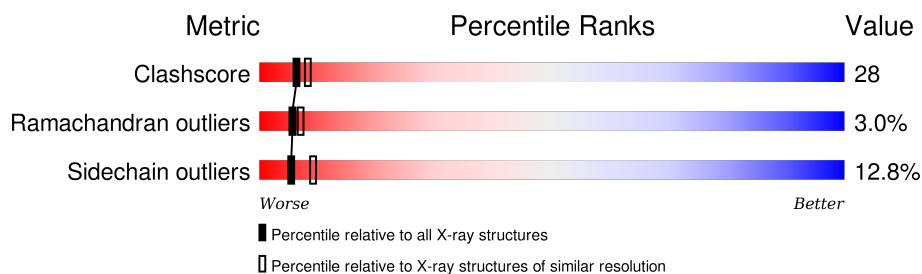
1 Overall quality at a glance

The following experimental techniques were used to determine the structure:

X-RAY DIFFRACTION

The reported resolution of this entry is 2.55 Å.

Percentile scores (ranging between 0-100) for global validation metrics of the entry are shown in the following graphic. The table shows the number of entries on which the scores are based.



Metric	Whole archive (#Entries)	Similar resolution (#Entries, resolution range(Å))
Clashscore	102246	5292 (2.58-2.50)
Ramachandran outliers	100387	5194 (2.58-2.50)
Sidechain outliers	100360	5196 (2.58-2.50)

The table below summarises the geometric issues observed across the polymeric chains and their fit to the electron density. The red, orange, yellow and green segments on the lower bar indicate the fraction of residues that contain outliers for ≥ 3 , 2, 1 and 0 types of geometric quality criteria. A grey segment represents the fraction of residues that are not modelled. The numeric value for each fraction is indicated below the corresponding segment, with a dot representing fractions $\leq 5\%$. The upper red bar (where present) indicates the fraction of residues that have poor fit to the electron density. The numeric value is given above the bar.

Note EDS was not executed.

Mol	Chain	Length	Quality of chain
1	A	345	

The following table lists non-polymeric compounds, carbohydrate monomers and non-standard residues in protein, DNA, RNA chains that are outliers for geometric or electron-density-fit criteria:

Mol	Type	Chain	Res	Chirality	Geometry	Clashes	Electron density
3	NAG	A	3	X	-	-	-
3	NAG	A	5	-	-	X	-

2 Entry composition [i](#)

There are 9 unique types of molecules in this entry. The entry contains 2867 atoms, of which 0 are hydrogens and 0 are deuteriums.

In the tables below, the ZeroOcc column contains the number of atoms modelled with zero occupancy, the AltConf column contains the number of residues with at least one atom in alternate conformation and the Trace column contains the number of residues modelled with at most 2 atoms.

- Molecule 1 is a protein called Lactotransferrin'.

Mol	Chain	Residues	Atoms					ZeroOcc	AltConf	Trace
			Total	C	N	O	S			
1	A	341	2604	1622	454	507	21	0	0	0

There are 2 discrepancies between the modelled and reference sequences:

Chain	Residue	Modelled	Actual	Comment	Reference
A	565	LYS	ASN	SEE REMARK 999	UNP P24627
A	608	GLU	LYS	SEE REMARK 999	UNP P24627

- Molecule 2 is SUGAR (N-ACETYL-D-GLUCOSAMINE) (three-letter code: NAG) (formula: $C_8H_{15}NO_6$).



Mol	Chain	Residues	Atoms				ZeroOcc	AltConf
			Total	C	N	O		
2	A	1	14	8	1	5	0	0

- Molecule 3 is a polymer of unknown type called SUGAR (2-MER).

Mol	Chain	Residues	Atoms				ZeroOcc	AltConf
3	A	2	Total	C	N	O	0	0
			28	16	2	10		
3	A	2	Total	C	N	O	0	0
			28	16	2	10		

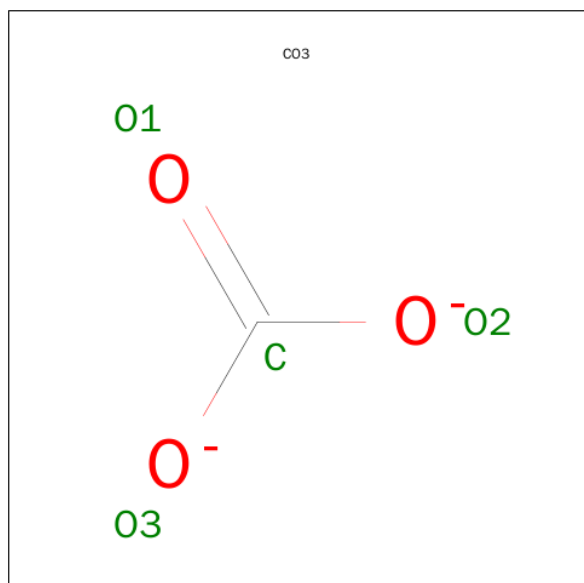
- Molecule 4 is ZINC ION (three-letter code: ZN) (formula: Zn).

Mol	Chain	Residues	Atoms		ZeroOcc	AltConf
4	A	2	Total	Zn	0	0
			2	2		

- Molecule 5 is FE (III) ION (three-letter code: FE) (formula: Fe).

Mol	Chain	Residues	Atoms		ZeroOcc	AltConf
5	A	1	Total	Fe	0	0
			1	1		

- Molecule 6 is CARBONATE ION (three-letter code: CO3) (formula: CO₃).



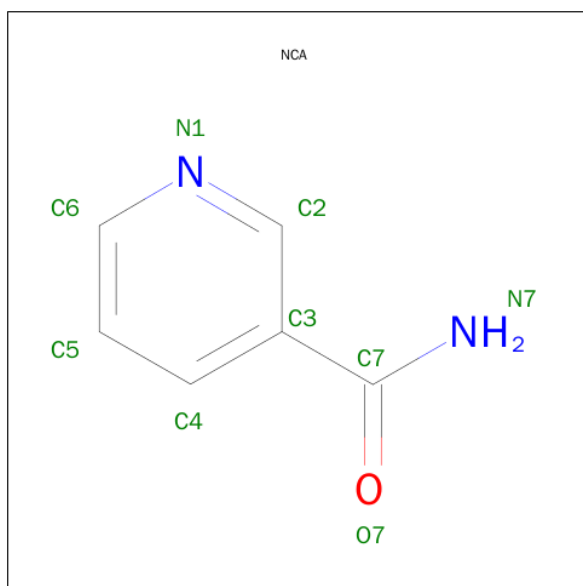
Mol	Chain	Residues	Atoms			ZeroOcc	AltConf
6	A	1	Total	C	O	0	0
			4	1	3		

- Molecule 7 is SULFATE ION (three-letter code: SO4) (formula: O₄S).



Mol	Chain	Residues	Atoms			ZeroOcc	AltConf
7	A	1	Total	O	S	0	0
			5	4	1		

- Molecule 8 is NICOTINAMIDE (three-letter code: NCA) (formula: C₆H₆N₂O).



Mol	Chain	Residues	Atoms				ZeroOcc	AltConf
8	A	1	Total	C	N	O	0	0
			9	6	2	1		

- Molecule 9 is water.

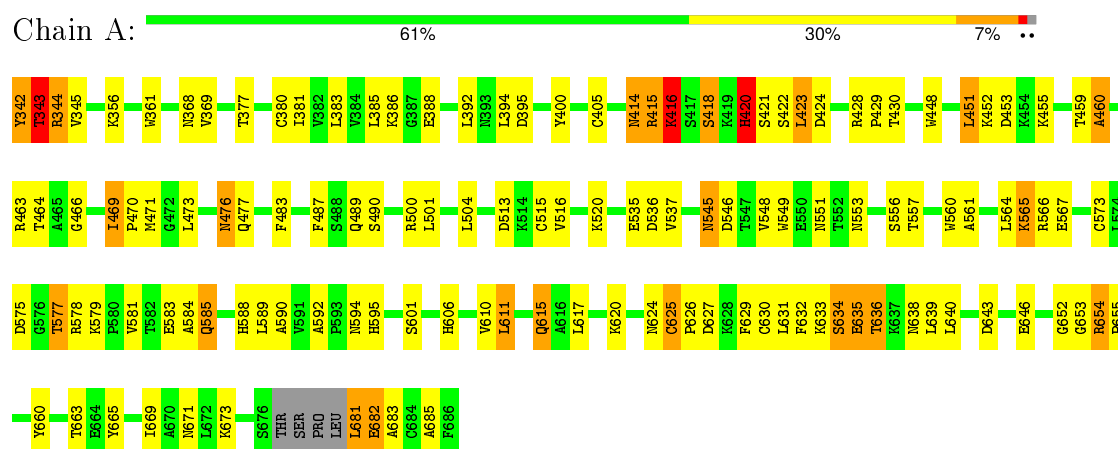
Mol	Chain	Residues	Atoms		ZeroOcc	AltConf
9	A	172	Total 172	O 172	0	0

3 Residue-property plots

These plots are drawn for all protein, RNA and DNA chains in the entry. The first graphic for a chain summarises the proportions of errors displayed in the second graphic. The second graphic shows the sequence view annotated by issues in geometry and electron density. Residues are color-coded according to the number of geometric quality criteria for which they contain at least one outlier: green = 0, yellow = 1, orange = 2 and red = 3 or more. A red dot above a residue indicates a poor fit to the electron density ($RSRZ > 2$). Stretches of 2 or more consecutive residues without any outlier are shown as a green connector. Residues present in the sample, but not in the model, are shown in grey.

Note EDS was not executed.

- Molecule 1: Lactotransferrin'



4 Data and refinement statistics

Xtriage (Phenix) and EDS were not executed - this section will therefore be incomplete.

Property	Value	Source
Space group	P 1 21 1	Depositor
Cell constants a, b, c, α , β , γ	63.33 Å 50.34 Å 65.91 Å 90.00° 107.65° 90.00°	Depositor
Resolution (Å)	20.00 – 2.55	Depositor
% Data completeness (in resolution range)	85.7 (20.00-2.55)	Depositor
R_{merge}	(Not available)	Depositor
R_{sym}	0.15	Depositor
Refinement program	CNS	Depositor
R, R_{free}	0.225 , 0.249	Depositor
Estimated twinning fraction	No twinning to report.	Xtriage
Total number of atoms	2867	wwPDB-VP
Average B, all atoms (Å ²)	35.0	wwPDB-VP

5 Model quality

5.1 Standard geometry

Bond lengths and bond angles in the following residue types are not validated in this section: ZN, NAG, CO3, SO4, NCA, FE

The Z score for a bond length (or angle) is the number of standard deviations the observed value is removed from the expected value. A bond length (or angle) with $|Z| > 5$ is considered an outlier worth inspection. RMSZ is the root-mean-square of all Z scores of the bond lengths (or angles).

Mol	Chain	Bond lengths		Bond angles	
		RMSZ	$\# Z > 5$	RMSZ	$\# Z > 5$
1	A	0.53	1/2652 (0.0%)	0.87	4/3591 (0.1%)

Chiral center outliers are detected by calculating the chiral volume of a chiral center and verifying if the center is modelled as a planar moiety or with the opposite hand. A planarity outlier is detected by checking planarity of atoms in a peptide group, atoms in a mainchain group or atoms of a sidechain that are expected to be planar.

Mol	Chain	#Chirality outliers	#Planarity outliers
1	A	0	1
3	A	1	0
All	All	1	1

All (1) bond length outliers are listed below:

Mol	Chain	Res	Type	Atoms	Z	Observed(Å)	Ideal(Å)
1	A	476	ASN	CB-CG	-5.87	1.37	1.51

All (4) bond angle outliers are listed below:

Mol	Chain	Res	Type	Atoms	Z	Observed(°)	Ideal(°)
1	A	421	SER	N-CA-C	7.01	129.92	111.00
1	A	617	LEU	CA-CB-CG	6.40	130.02	115.30
1	A	343	THR	N-CA-C	5.46	125.75	111.00
1	A	420	HIS	N-CA-C	-5.46	96.27	111.00

All (1) chirality outliers are listed below:

Mol	Chain	Res	Type	Atom
3	A	3	NAG	C1

All (1) planarity outliers are listed below:

Mol	Chain	Res	Type	Group
1	A	660	TYR	Sidechain

5.2 Too-close contacts

In the following table, the Non-H and H(model) columns list the number of non-hydrogen atoms and hydrogen atoms in the chain respectively. The H(added) column lists the number of hydrogen atoms added and optimized by MolProbity. The Clashes column lists the number of clashes within the asymmetric unit, whereas Symm-Clashes lists symmetry related clashes.

Mol	Chain	Non-H	H(model)	H(added)	Clashes	Symm-Clashes
1	A	2604	0	2519	147	0
2	A	14	0	13	0	0
3	A	56	0	50	22	0
4	A	2	0	0	0	0
5	A	1	0	0	0	0
6	A	4	0	0	0	0
7	A	5	0	0	0	0
8	A	9	0	6	0	0
9	A	172	0	0	29	0
All	All	2867	0	2588	147	0

The all-atom clashscore is defined as the number of clashes found per 1000 atoms (including hydrogen atoms). The all-atom clashscore for this structure is 28.

All (147) close contacts within the same asymmetric unit are listed below, sorted by their clash magnitude.

Atom-1	Atom-2	Interatomic distance (Å)	Clash overlap (Å)
1:A:545:ASN:ND2	1:A:545:ASN:C	1.91	1.18
1:A:545:ASN:HD22	1:A:546:ASP:N	1.49	1.11
1:A:535:GLU:HB2	9:A:817:HOH:O	1.60	1.02
1:A:546:ASP:HA	3:A:5:NAG:O5	1.64	0.97
1:A:546:ASP:HB3	3:A:5:NAG:O6	1.64	0.97
1:A:546:ASP:CB	3:A:5:NAG:O6	2.12	0.97
1:A:545:ASN:HD22	1:A:545:ASN:C	1.59	0.95
1:A:549:TRP:HB2	3:A:5:NAG:H62	1.48	0.93
1:A:549:TRP:CD1	3:A:5:NAG:H5	2.03	0.93
1:A:546:ASP:CA	3:A:5:NAG:O6	2.16	0.93
1:A:546:ASP:HA	3:A:5:NAG:C6	1.99	0.92
1:A:584:ALA:HB3	3:A:5:NAG:H82	1.55	0.89

Continued on next page...

Continued from previous page...

Atom-1	Atom-2	Interatomic distance (Å)	Clash overlap (Å)
1:A:546:ASP:HA	3:A:5:NAG:O6	1.74	0.87
1:A:636:THR:HG23	1:A:636:THR:O	1.74	0.87
1:A:545:ASN:ND2	1:A:546:ASP:N	2.17	0.87
1:A:415:ARG:HG3	1:A:416:LYS:H	1.38	0.86
1:A:549:TRP:CG	3:A:5:NAG:H5	2.13	0.84
1:A:549:TRP:HB2	3:A:5:NAG:C6	2.08	0.83
1:A:343:THR:O	1:A:344:ARG:HD3	1.79	0.83
1:A:386:LYS:HB2	9:A:832:HOH:O	1.78	0.83
1:A:343:THR:HA	1:A:606:HIS:NE2	1.94	0.83
1:A:638:ASN:HD22	1:A:643:ASP:H	1.27	0.82
1:A:520:LYS:HB3	9:A:823:HOH:O	1.79	0.82
1:A:453:ASP:HB3	9:A:771:HOH:O	1.80	0.81
1:A:383:LEU:HA	9:A:832:HOH:O	1.80	0.80
1:A:565:LYS:HZ3	1:A:567:GLU:H	1.31	0.79
1:A:638:ASN:ND2	1:A:643:ASP:H	1.82	0.76
1:A:546:ASP:HA	3:A:5:NAG:C5	2.14	0.76
1:A:560:TRP:HB2	9:A:846:HOH:O	1.86	0.76
1:A:473:LEU:HD23	3:A:2:NAG:H82	1.68	0.76
1:A:685:ALA:HB3	9:A:813:HOH:O	1.85	0.75
1:A:681:LEU:O	1:A:682:GLU:HB3	1.87	0.75
1:A:636:THR:CG2	1:A:636:THR:O	2.37	0.73
1:A:625:CYS:HA	1:A:629:PHE:O	1.89	0.73
1:A:546:ASP:HB3	3:A:5:NAG:HO6	1.55	0.71
1:A:415:ARG:CG	1:A:416:LYS:H	2.04	0.70
1:A:473:LEU:CD2	3:A:2:NAG:H82	2.23	0.69
1:A:430:THR:HB	1:A:594:ASN:ND2	2.08	0.68
1:A:415:ARG:HG3	1:A:416:LYS:N	2.07	0.68
1:A:386:LYS:HE3	9:A:832:HOH:O	1.93	0.68
1:A:565:LYS:HZ2	1:A:567:GLU:HB2	1.59	0.68
1:A:565:LYS:HZ3	1:A:567:GLU:N	1.90	0.67
1:A:565:LYS:NZ	1:A:567:GLU:H	1.92	0.66
1:A:343:THR:O	1:A:343:THR:HG23	1.95	0.66
1:A:513:ASP:HB2	9:A:823:HOH:O	1.95	0.66
1:A:575:ASP:OD1	1:A:577:THR:HB	1.95	0.66
1:A:395:ASP:HA	1:A:595:HIS:CD2	2.31	0.66
1:A:546:ASP:CA	3:A:5:NAG:O5	2.43	0.65
1:A:545:ASN:O	1:A:545:ASN:ND2	2.29	0.65
1:A:546:ASP:O	3:A:5:NAG:H62	1.98	0.64
1:A:513:ASP:O	1:A:516:VAL:HG22	1.98	0.64
1:A:459:THR:OG1	1:A:466:GLY:HA3	1.98	0.63
1:A:565:LYS:NZ	1:A:567:GLU:HB2	2.12	0.63

Continued on next page...

Continued from previous page...

Atom-1	Atom-2	Interatomic distance (Å)	Clash overlap (Å)
1:A:626:PRO:HD3	9:A:835:HOH:O	1.98	0.63
1:A:536:ASP:HA	9:A:698:HOH:O	1.99	0.62
1:A:626:PRO:HG2	9:A:860:HOH:O	1.98	0.62
1:A:584:ALA:HB3	3:A:5:NAG:C8	2.29	0.61
1:A:388:GLU:HB2	9:A:832:HOH:O	1.99	0.61
1:A:343:THR:O	1:A:343:THR:CG2	2.47	0.61
1:A:343:THR:N	1:A:606:HIS:NE2	2.49	0.61
1:A:549:TRP:HB3	3:A:6:NAG:H82	1.83	0.61
1:A:632:PHE:HE2	9:A:724:HOH:O	1.84	0.61
1:A:415:ARG:O	1:A:646:GLU:HB2	2.01	0.60
1:A:625:CYS:SG	1:A:626:PRO:N	2.75	0.60
1:A:635:GLU:HG2	9:A:759:HOH:O	2.04	0.58
1:A:343:THR:O	1:A:344:ARG:CD	2.49	0.57
1:A:653:GLY:O	1:A:654:ARG:C	2.41	0.57
1:A:460:ALA:HB3	1:A:463:ARG:HD3	1.86	0.56
1:A:342:TYR:C	1:A:606:HIS:NE2	2.60	0.56
1:A:565:LYS:CE	1:A:567:GLU:H	2.19	0.55
1:A:344:ARG:H	1:A:606:HIS:HE1	1.55	0.55
1:A:343:THR:CA	1:A:606:HIS:NE2	2.67	0.55
1:A:634:SER:C	1:A:635:GLU:HG3	2.26	0.55
1:A:369:VAL:HG23	9:A:791:HOH:O	2.06	0.55
1:A:361:TRP:HB2	1:A:629:PHE:CZ	2.42	0.54
1:A:565:LYS:HE2	1:A:566:ARG:N	2.23	0.53
1:A:414:ASN:HD21	1:A:430:THR:HA	1.73	0.53
1:A:577:THR:HG23	1:A:578:ARG:N	2.22	0.53
1:A:400:TYR:HE2	9:A:852:HOH:O	1.91	0.53
1:A:577:THR:CG2	1:A:578:ARG:N	2.73	0.51
1:A:638:ASN:HD22	1:A:643:ASP:N	2.03	0.51
1:A:464:THR:HG21	1:A:592:ALA:HB1	1.92	0.51
1:A:415:ARG:CG	1:A:416:LYS:N	2.67	0.51
1:A:459:THR:O	1:A:460:ALA:HB2	2.11	0.50
1:A:415:ARG:O	1:A:416:LYS:HB3	2.11	0.50
1:A:537:VAL:HG23	9:A:817:HOH:O	2.11	0.50
1:A:625:CYS:O	1:A:626:PRO:C	2.51	0.49
1:A:551:ASN:HA	1:A:556:SER:HB2	1.95	0.49
1:A:343:THR:HA	1:A:606:HIS:CE1	2.47	0.49
1:A:513:ASP:CB	9:A:823:HOH:O	2.57	0.48
1:A:566:ARG:NH2	3:A:6:NAG:H81	2.28	0.48
1:A:420:HIS:CE1	1:A:429:PRO:HD2	2.48	0.48
1:A:639:LEU:O	1:A:640:LEU:HB2	2.13	0.48
1:A:606:HIS:HB3	9:A:834:HOH:O	2.13	0.47

Continued on next page...

Continued from previous page...

Atom-1	Atom-2	Interatomic distance (Å)	Clash overlap (Å)
1:A:665:TYR:CE2	1:A:669:ILE:HD11	2.50	0.47
1:A:573:CYS:SG	1:A:579:LYS:HD2	2.55	0.47
1:A:590:ALA:HA	9:A:741:HOH:O	2.14	0.47
1:A:625:CYS:SG	1:A:626:PRO:HD3	2.55	0.47
1:A:625:CYS:CB	1:A:626:PRO:CD	2.93	0.46
1:A:682:GLU:HG3	1:A:682:GLU:O	2.16	0.46
1:A:537:VAL:CG2	9:A:817:HOH:O	2.63	0.46
1:A:471:MET:HE1	1:A:487:PHE:HE2	1.80	0.46
1:A:345:VAL:O	1:A:369:VAL:HA	2.16	0.46
1:A:368:ASN:CB	9:A:791:HOH:O	2.64	0.46
1:A:553:ASN:OD1	1:A:565:LYS:HA	2.15	0.46
1:A:585:GLN:HB2	9:A:713:HOH:O	2.16	0.46
1:A:342:TYR:N	1:A:342:TYR:CD1	2.84	0.45
1:A:585:GLN:HG2	9:A:851:HOH:O	2.17	0.45
1:A:342:TYR:N	1:A:342:TYR:HD1	2.14	0.45
1:A:625:CYS:SG	1:A:626:PRO:CD	3.04	0.45
1:A:546:ASP:CA	3:A:5:NAG:C6	2.77	0.45
1:A:448:TRP:HE1	1:A:477:GLN:HE22	1.64	0.45
1:A:625:CYS:C	1:A:630:CYS:SG	2.96	0.45
1:A:565:LYS:HE2	1:A:566:ARG:H	1.81	0.45
1:A:556:SER:O	1:A:557:THR:OG1	2.20	0.44
1:A:669:ILE:O	1:A:673:LYS:HG2	2.17	0.44
1:A:671:ASN:HB3	9:A:753:HOH:O	2.17	0.44
1:A:415:ARG:O	1:A:416:LYS:CB	2.65	0.44
1:A:548:VAL:HG11	1:A:581:VAL:HG11	2.00	0.44
1:A:385:LEU:HD11	1:A:405:CYS:HB3	2.00	0.44
1:A:451:LEU:HA	1:A:451:LEU:HD12	1.76	0.43
1:A:423:LEU:HD22	1:A:428:ARG:HA	1.99	0.43
1:A:589:LEU:O	1:A:590:ALA:HB2	2.19	0.43
1:A:392:LEU:HD11	1:A:394:LEU:HD21	2.01	0.43
1:A:610:VAL:HG21	9:A:798:HOH:O	2.18	0.43
1:A:430:THR:HB	1:A:594:ASN:HD22	1.82	0.42
1:A:490:SER:HB2	1:A:501:LEU:HA	2.00	0.42
1:A:681:LEU:O	1:A:682:GLU:CB	2.62	0.42
1:A:626:PRO:CG	9:A:860:HOH:O	2.59	0.42
1:A:611:LEU:O	1:A:615:GLN:HB3	2.20	0.42
1:A:549:TRP:CD1	3:A:5:NAG:C5	2.90	0.42
1:A:377:THR:O	1:A:381:ILE:HG13	2.19	0.42
1:A:585:GLN:O	1:A:588:HIS:HE1	2.02	0.42
1:A:653:GLY:O	1:A:655:PRO:N	2.53	0.41
1:A:561:ALA:HA	1:A:564:LEU:CD1	2.50	0.41

Continued on next page...

Continued from previous page...

Atom-1	Atom-2	Interatomic distance (Å)	Clash overlap (Å)
1:A:685:ALA:HA	9:A:762:HOH:O	2.20	0.41
1:A:464:THR:HG21	1:A:592:ALA:CB	2.50	0.41
1:A:577:THR:HG23	1:A:578:ARG:H	1.85	0.41
1:A:344:ARG:H	1:A:606:HIS:CE1	2.36	0.41
1:A:452:LYS:O	1:A:453:ASP:HB2	2.21	0.41
1:A:682:GLU:O	1:A:683:ALA:HB2	2.21	0.41
1:A:414:ASN:HD22	1:A:414:ASN:HA	1.52	0.41
1:A:573:CYS:SG	1:A:577:THR:HG22	2.60	0.41
1:A:624:ASN:O	1:A:625:CYS:O	2.38	0.41
1:A:585:GLN:O	1:A:588:HIS:CE1	2.74	0.41
1:A:469:ILE:N	1:A:470:PRO:HD2	2.35	0.41
1:A:455:LYS:HD3	1:A:489:GLN:HE21	1.86	0.40

There are no symmetry-related clashes.

5.3 Torsion angles [i](#)

5.3.1 Protein backbone [i](#)

In the following table, the Percentiles column shows the percent Ramachandran outliers of the chain as a percentile score with respect to all X-ray entries followed by that with respect to entries of similar resolution.

The Analysed column shows the number of residues for which the backbone conformation was analysed, and the total number of residues.

Mol	Chain	Analysed	Favoured	Allowed	Outliers	Percentiles
1	A	337/345 (98%)	306 (91%)	21 (6%)	10 (3%)	5 7

All (10) Ramachandran outliers are listed below:

Mol	Chain	Res	Type
1	A	343	THR
1	A	418	SER
1	A	420	HIS
1	A	625	CYS
1	A	416	LYS
1	A	682	GLU
1	A	460	ALA
1	A	634	SER
1	A	652	GLY

Continued on next page...

Continued from previous page...

Mol	Chain	Res	Type
1	A	654	ARG

5.3.2 Protein sidechains ⓘ

In the following table, the Percentiles column shows the percent sidechain outliers of the chain as a percentile score with respect to all X-ray entries followed by that with respect to entries of similar resolution.

The Analysed column shows the number of residues for which the sidechain conformation was analysed, and the total number of residues.

Mol	Chain	Analysed	Rotameric	Outliers	Percentiles
1	A	282/286 (99%)	246 (87%)	36 (13%)	5 9

All (36) residues with a non-rotameric sidechain are listed below:

Mol	Chain	Res	Type
1	A	342	TYR
1	A	343	THR
1	A	344	ARG
1	A	356	LYS
1	A	380	CYS
1	A	414	ASN
1	A	415	ARG
1	A	416	LYS
1	A	418	SER
1	A	420	HIS
1	A	422	SER
1	A	423	LEU
1	A	424	ASP
1	A	451	LEU
1	A	469	ILE
1	A	476	ASN
1	A	483	PHE
1	A	500	ARG
1	A	504	LEU
1	A	515	CYS
1	A	545	ASN
1	A	565	LYS
1	A	577	THR
1	A	583	GLU
1	A	585	GLN

Continued on next page...

Continued from previous page...

Mol	Chain	Res	Type
1	A	601	SER
1	A	611	LEU
1	A	615	GLN
1	A	620	LYS
1	A	627	ASP
1	A	631	LEU
1	A	633	LYS
1	A	635	GLU
1	A	636	THR
1	A	663	THR
1	A	681	LEU

Some sidechains can be flipped to improve hydrogen bonding and reduce clashes. All (4) such sidechains are listed below:

Mol	Chain	Res	Type
1	A	414	ASN
1	A	420	HIS
1	A	489	GLN
1	A	638	ASN

5.3.3 RNA [i](#)

There are no RNA molecules in this entry.

5.4 Non-standard residues in protein, DNA, RNA chains [i](#)

There are no non-standard protein/DNA/RNA residues in this entry.

5.5 Carbohydrates [i](#)

4 carbohydrates are modelled in this entry.

In the following table, the Counts columns list the number of bonds (or angles) for which Mogul statistics could be retrieved, the number of bonds (or angles) that are observed in the model and the number of bonds (or angles) that are defined in the chemical component dictionary. The Link column lists molecule types, if any, to which the group is linked. The Z score for a bond length (or angle) is the number of standard deviations the observed value is removed from the expected value. A bond length (or angle) with $|Z| > 2$ is considered an outlier worth inspection. RMSZ is the root-mean-square of all Z scores of the bond lengths (or angles).

Mol	Type	Chain	Res	Link	Bond lengths			Bond angles		
					Counts	RMSZ	# Z > 2	Counts	RMSZ	# Z > 2
3	NAG	A	2	1,3	14,14,15	1.67	4 (28%)	15,19,21	1.80	2 (13%)
3	NAG	A	3	3	14,14,15	0.52	0	15,19,21	0.67	0
3	NAG	A	5	1,3	14,14,15	1.87	2 (14%)	15,19,21	2.01	5 (33%)
3	NAG	A	6	3	14,14,15	0.87	1 (7%)	15,19,21	0.88	1 (6%)

In the following table, the Chirals column lists the number of chiral outliers, the number of chiral centers analysed, the number of these observed in the model and the number defined in the chemical component dictionary. Similar counts are reported in the Torsion and Rings columns. '-' means no outliers of that kind were identified.

Mol	Type	Chain	Res	Link	Chirals	Torsions	Rings
3	NAG	A	2	1,3	-	0/6/23/26	0/1/1/1
3	NAG	A	3	3	1/1/5/7	0/6/23/26	0/1/1/1
3	NAG	A	5	1,3	-	0/6/23/26	0/1/1/1
3	NAG	A	6	3	-	0/6/23/26	0/1/1/1

All (7) bond length outliers are listed below:

Mol	Chain	Res	Type	Atoms	Z	Observed(Å)	Ideal(Å)
3	A	5	NAG	C1-C2	-4.87	1.45	1.52
3	A	5	NAG	C3-C2	-3.89	1.43	1.52
3	A	2	NAG	O4-C4	-2.79	1.36	1.43
3	A	2	NAG	C4-C5	-2.78	1.47	1.53
3	A	2	NAG	O5-C1	2.20	1.47	1.43
3	A	6	NAG	C4-C3	2.42	1.58	1.52
3	A	2	NAG	C1-C2	2.80	1.56	1.52

All (8) bond angle outliers are listed below:

Mol	Chain	Res	Type	Atoms	Z	Observed(°)	Ideal(°)
3	A	2	NAG	C4-C3-C2	-5.98	101.93	111.23
3	A	5	NAG	C2-N2-C7	-4.79	116.88	123.04
3	A	5	NAG	O4-C4-C3	-2.98	103.63	110.34
3	A	2	NAG	O4-C4-C5	-2.02	103.89	109.24
3	A	6	NAG	C4-C3-C2	2.09	114.47	111.23
3	A	5	NAG	C3-C4-C5	2.13	113.91	110.20
3	A	5	NAG	C4-C3-C2	2.42	114.98	111.23
3	A	5	NAG	O5-C5-C6	2.42	112.59	107.35

All (1) chirality outliers are listed below:

Mol	Chain	Res	Type	Atom
3	A	3	NAG	C1

There are no torsion outliers.

There are no ring outliers.

3 monomers are involved in 22 short contacts:

Mol	Chain	Res	Type	Clashes	Symm-Clashes
3	A	2	NAG	2	0
3	A	5	NAG	18	0
3	A	6	NAG	2	0

5.6 Ligand geometry [i](#)

Of 7 ligands modelled in this entry, 3 are monoatomic - leaving 4 for Mogul analysis.

In the following table, the Counts columns list the number of bonds (or angles) for which Mogul statistics could be retrieved, the number of bonds (or angles) that are observed in the model and the number of bonds (or angles) that are defined in the chemical component dictionary. The Link column lists molecule types, if any, to which the group is linked. The Z score for a bond length (or angle) is the number of standard deviations the observed value is removed from the expected value. A bond length (or angle) with $|Z| > 2$ is considered an outlier worth inspection. RMSZ is the root-mean-square of all Z scores of the bond lengths (or angles).

Mol	Type	Chain	Res	Link	Bond lengths			Bond angles		
					Counts	RMSZ	$\# Z > 2$	Counts	RMSZ	$\# Z > 2$
2	NAG	A	1	1	14,14,15	0.67	0	15,19,21	0.75	0
6	CO3	A	690	5	0,3,3	0.00	-	0,3,3	0.00	-
7	SO4	A	691	-	4,4,4	1.03	0	6,6,6	0.60	0
8	NCA	A	692	-	9,9,9	1.69	3 (33%)	11,11,11	1.32	1 (9%)

In the following table, the Chirals column lists the number of chiral outliers, the number of chiral centers analysed, the number of these observed in the model and the number defined in the chemical component dictionary. Similar counts are reported in the Torsion and Rings columns. '-' means no outliers of that kind were identified.

Mol	Type	Chain	Res	Link	Chirals	Torsions	Rings
2	NAG	A	1	1	-	0/6/23/26	0/1/1/1
6	CO3	A	690	5	-	0/0/0/0	0/0/0/0
7	SO4	A	691	-	-	0/0/0/0	0/0/0/0
8	NCA	A	692	-	-	0/4/4/4	0/1/1/1

All (3) bond length outliers are listed below:

Mol	Chain	Res	Type	Atoms	Z	Observed(Å)	Ideal(Å)
8	A	692	NCA	C7-N7	2.02	1.37	1.33
8	A	692	NCA	C2-C3	2.80	1.43	1.39
8	A	692	NCA	C4-C3	3.01	1.44	1.39

All (1) bond angle outliers are listed below:

Mol	Chain	Res	Type	Atoms	Z	Observed($^{\circ}$)	Ideal($^{\circ}$)
8	A	692	NCA	C6-N1-C2	2.75	121.91	116.84

There are no chirality outliers.

There are no torsion outliers.

There are no ring outliers.

No monomer is involved in short contacts.

5.7 Other polymers [i](#)

There are no such residues in this entry.

5.8 Polymer linkage issues [i](#)

There are no chain breaks in this entry.

6 Fit of model and data ⓘ

6.1 Protein, DNA and RNA chains ⓘ

EDS was not executed - this section will therefore be empty.

6.2 Non-standard residues in protein, DNA, RNA chains ⓘ

EDS was not executed - this section will therefore be empty.

6.3 Carbohydrates ⓘ

EDS was not executed - this section will therefore be empty.

6.4 Ligands ⓘ

EDS was not executed - this section will therefore be empty.

6.5 Other polymers ⓘ

EDS was not executed - this section will therefore be empty.