



# Full wwPDB X-ray Structure Validation Report ⓘ

Feb 1, 2016 – 05:36 AM GMT

PDB ID : 2REX  
Title : Crystal structure of the effector domain of PLXNB1 bound with Rnd1 GTPase  
Authors : Tong, Y.; Tempel, W.; Shen, L.; Arrowsmith, C.H.; Edwards, A.M.; Sundstrom, M.; Weigelt, J.; Bochkarev, A.; Park, H.; Structural Genomics Consortium (SGC)  
Deposited on : 2007-09-27  
Resolution : 2.30 Å(reported)

This is a Full wwPDB X-ray Structure Validation Report for a publicly released PDB entry.  
We welcome your comments at [validation@mail.wwpdb.org](mailto:validation@mail.wwpdb.org)  
A user guide is available at  
<http://wwpdb.org/validation/2016/XrayValidationReportHelp>  
with specific help available everywhere you see the ⓘ symbol.

---

The following versions of software and data (see [references ⓘ](#)) were used in the production of this report:

MolProbity : 4.02b-467  
Mogul : 1.7 (RC4), CSD as536be (2015)  
Xtriage (Phenix) : 1.9-1692  
EDS : rb-20026688  
Percentile statistics : 20151230.v01 (using entries in the PDB archive December 30th 2015)  
Refmac : 5.8.0135  
CCP4 : 6.5.0  
Ideal geometry (proteins) : Engh & Huber (2001)  
Ideal geometry (DNA, RNA) : Parkinson et al. (1996)  
Validation Pipeline (wwPDB-VP) : trunk26865

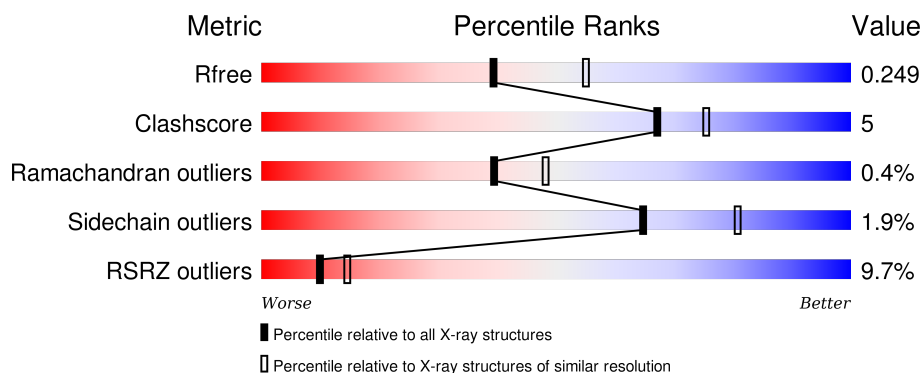
# 1 Overall quality at a glance

The following experimental techniques were used to determine the structure:

## *X-RAY DIFFRACTION*

The reported resolution of this entry is 2.30 Å.

Percentile scores (ranging between 0-100) for global validation metrics of the entry are shown in the following graphic. The table shows the number of entries on which the scores are based.



Metric	Whole archive (#Entries)	Similar resolution (#Entries, resolution range(Å))
$R_{free}$	91344	3852 (2.30-2.30)
Clashscore	102246	4452 (2.30-2.30)
Ramachandran outliers	100387	4410 (2.30-2.30)
Sidechain outliers	100360	4409 (2.30-2.30)
RSRZ outliers	91569	3857 (2.30-2.30)

The table below summarises the geometric issues observed across the polymeric chains and their fit to the electron density. The red, orange, yellow and green segments on the lower bar indicate the fraction of residues that contain outliers for  $\geq 3$ , 2, 1 and 0 types of geometric quality criteria. A grey segment represents the fraction of residues that are not modelled. The numeric value for each fraction is indicated below the corresponding segment, with a dot representing fractions  $\leq 5\%$ . The upper red bar (where present) indicates the fraction of residues that have poor fit to the electron density. The numeric value is given above the bar.

Mol	Chain	Length	Quality of chain
1	A	121	<div> <div>15%</div> <div>79%</div> <div>10%</div> <div>12%</div> </div>
1	C	121	<div> <div>7%</div> <div>83%</div> <div>6%</div> <div>12%</div> </div>
2	B	197	<div> <div>10%</div> <div>77%</div> <div>10%</div> <div>13%</div> </div>
2	D	197	<div> <div>5%</div> <div>79%</div> <div>12%</div> <div>9%</div> </div>

The following table lists non-polymeric compounds, carbohydrate monomers and non-standard

residues in protein, DNA, RNA chains that are outliers for geometric or electron-density-fit criteria:

Mol	Type	Chain	Res	Chirality	Geometry	Clashes	Electron density
6	UNX	A	1	-	-	-	X
6	UNX	A	11	-	-	-	X
6	UNX	B	553	-	-	-	X
6	UNX	B	554	-	-	-	X
6	UNX	B	556	-	-	-	X
6	UNX	B	559	-	-	-	X
6	UNX	B	560	-	-	-	X
6	UNX	C	2	-	-	-	X
6	UNX	C	20	-	-	-	X
6	UNX	C	9	-	-	-	X
6	UNX	D	552	-	-	-	X
6	UNX	D	554	-	-	-	X
6	UNX	D	555	-	-	-	X
6	UNX	D	560	-	-	-	X

## 2 Entry composition

There are 7 unique types of molecules in this entry. The entry contains 4464 atoms, of which 0 are hydrogens and 0 are deuteriums.

In the tables below, the ZeroOcc column contains the number of atoms modelled with zero occupancy, the AltConf column contains the number of residues with at least one atom in alternate conformation and the Trace column contains the number of residues modelled with at most 2 atoms.

- Molecule 1 is a protein called Plexin-B1.

Mol	Chain	Residues	Atoms					ZeroOcc	AltConf	Trace
1	A	107	Total	C	N	O	S	0	0	0
			808	512	139	154	3			
1	C	107	Total	C	N	O	S	0	0	0
			806	511	139	153	3			

There are 2 discrepancies between the modelled and reference sequences:

Chain	Residue	Modelled	Actual	Comment	Reference
A	1742	GLY	-	EXPRESSION TAG	UNP O43157
C	1742	GLY	-	EXPRESSION TAG	UNP O43157

- Molecule 2 is a protein called Rho-related GTP-binding protein Rho6.

Mol	Chain	Residues	Atoms					ZeroOcc	AltConf	Trace
2	B	171	Total	C	N	O	S	0	2	0
			1310	834	209	252	15			
2	D	180	Total	C	N	O	S	0	2	0
			1367	876	217	259	15			

There are 2 discrepancies between the modelled and reference sequences:

Chain	Residue	Modelled	Actual	Comment	Reference
B	4	GLY	-	EXPRESSION TAG	UNP Q92730
D	4	GLY	-	EXPRESSION TAG	UNP Q92730

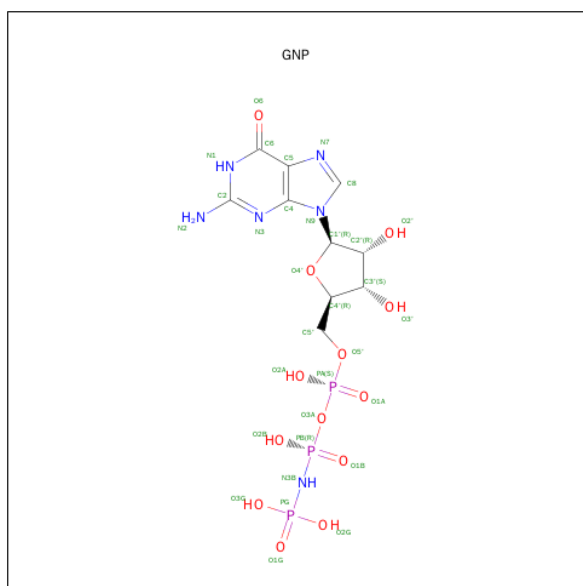
- Molecule 3 is MAGNESIUM ION (three-letter code: MG) (formula: Mg).

Mol	Chain	Residues	Atoms		ZeroOcc	AltConf
3	B	1	Total	Mg	0	0
			1	1		
3	D	1	Total	Mg	0	0
			1	1		

- Molecule 4 is CALCIUM ION (three-letter code: CA) (formula: Ca).

Mol	Chain	Residues	Atoms		ZeroOcc	AltConf
4	B	1	Total	Ca	0	0
			1	1		
4	D	1	Total	Ca	0	0
			1	1		

- Molecule 5 is PHOSPHOAMINOPHOSPHONIC ACID-GUANYLATE ESTER (three-letter code: GNP) (formula:  $C_{10}H_{17}N_6O_{13}P_3$ ).



Mol	Chain	Residues	Atoms					ZeroOcc	AltConf
5	B	1	Total 32	C 10	N 6	O 13	P 3	0	0
5	D	1	Total 32	C 10	N 6	O 13	P 3	0	0

- Molecule 6 is UNKNOWN ATOM OR ION (three-letter code: UNX) (formula: X).

Mol	Chain	Residues	Atoms		ZeroOcc	AltConf
6	B	11	Total	X	0	0
			11	11		
6	A	4	Total	X	0	0
			4	4		
6	D	10	Total	X	0	0
			10	10		
6	C	5	Total	X	0	0
			5	5		

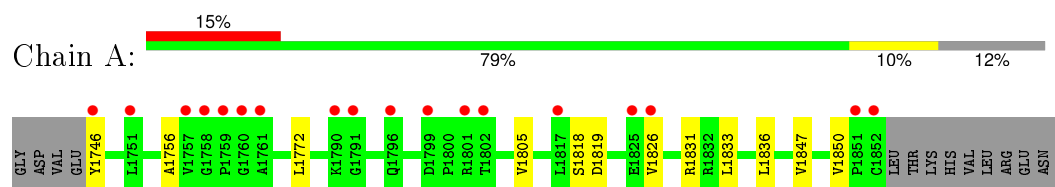
- Molecule 7 is water.

Mol	Chain	Residues	Atoms		ZeroOcc	AltConf
7	A	11	Total 11	O 11	0	0
7	B	24	Total 24	O 24	0	0
7	C	11	Total 11	O 11	0	0
7	D	29	Total 29	O 29	0	0

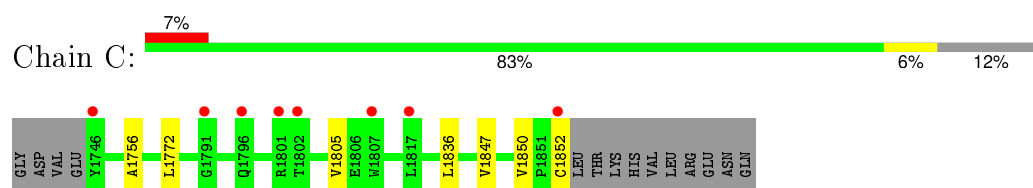
### 3 Residue-property plots [i](#)

These plots are drawn for all protein, RNA and DNA chains in the entry. The first graphic for a chain summarises the proportions of errors displayed in the second graphic. The second graphic shows the sequence view annotated by issues in geometry and electron density. Residues are color-coded according to the number of geometric quality criteria for which they contain at least one outlier: green = 0, yellow = 1, orange = 2 and red = 3 or more. A red dot above a residue indicates a poor fit to the electron density ( $RSRZ > 2$ ). Stretches of 2 or more consecutive residues without any outlier are shown as a green connector. Residues present in the sample, but not in the model, are shown in grey.

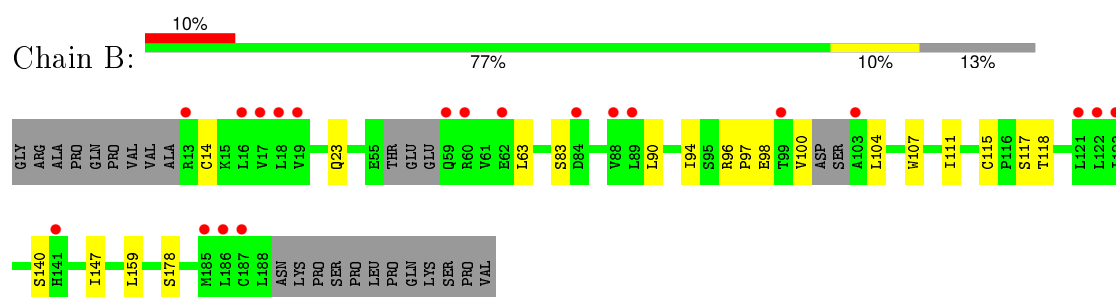
- Molecule 1: Plexin-B1



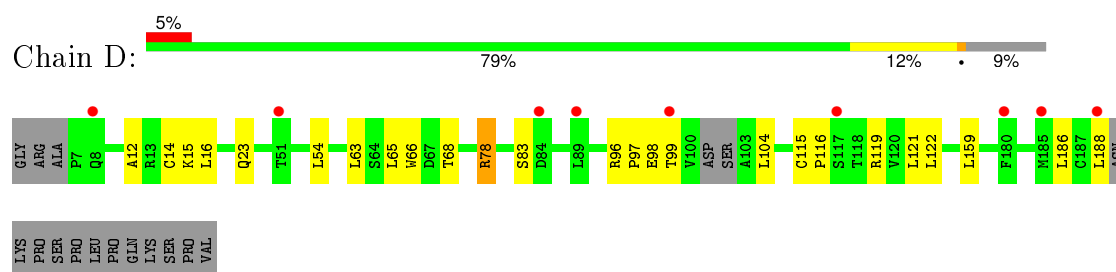
- Molecule 1: Plexin-B1



- Molecule 2: Rho-related GTP-binding protein Rho6



- Molecule 2: Rho-related GTP-binding protein Rho6



## 4 Data and refinement statistics

Property	Value	Source
Space group	C 1 2 1	Depositor
Cell constants a, b, c, $\alpha$ , $\beta$ , $\gamma$	150.14Å 71.65Å 101.89Å 90.00° 128.36° 90.00°	Depositor
Resolution (Å)	20.00 – 2.30 19.97 – 2.30	Depositor EDS
% Data completeness (in resolution range)	97.5 (20.00-2.30) 97.5 (19.97-2.30)	Depositor EDS
$R_{merge}$	0.06	Depositor
$R_{sym}$	(Not available)	Depositor
$\langle I/\sigma(I) \rangle$ <sup>1</sup>	3.48 (at 2.30Å)	Xtriage
Refinement program	REFMAC 5.2.0019	Depositor
R, $R_{free}$	0.215 , 0.248 0.227 , 0.249	Depositor DCC
$R_{free}$ test set	999 reflections (2.79%)	DCC
Wilson B-factor (Å <sup>2</sup> )	37.9	Xtriage
Anisotropy	0.014	Xtriage
Bulk solvent $k_{sol}$ (e/Å <sup>3</sup> ), $B_{sol}$ (Å <sup>2</sup> )	0.40 , 81.8	EDS
Estimated twinning fraction	No twinning to report.	Xtriage
L-test for twinning <sup>2</sup>	$\langle  L  \rangle = 0.50$ , $\langle L^2 \rangle = 0.33$	Xtriage
Outliers	0 of 36863 reflections	Xtriage
$F_o, F_c$ correlation	0.93	EDS
Total number of atoms	4464	wwPDB-VP
Average B, all atoms (Å <sup>2</sup> )	34.0	wwPDB-VP

Xtriage's analysis on translational NCS is as follows: *The largest off-origin peak in the Patterson function is 6.83% of the height of the origin peak. No significant pseudotranslation is detected.*

<sup>1</sup>Intensities estimated from amplitudes.

<sup>2</sup>Theoretical values of  $\langle |L| \rangle$ ,  $\langle L^2 \rangle$  for acentric reflections are 0.5, 0.375 respectively for untwinned datasets, and 0.333, 0.2 for perfectly twinned datasets.



## 5 Model quality [i](#)

### 5.1 Standard geometry [i](#)

Bond lengths and bond angles in the following residue types are not validated in this section: UNX, MG, CA, GNP

The Z score for a bond length (or angle) is the number of standard deviations the observed value is removed from the expected value. A bond length (or angle) with  $|Z| > 5$  is considered an outlier worth inspection. RMSZ is the root-mean-square of all Z scores of the bond lengths (or angles).

Mol	Chain	Bond lengths		Bond angles	
		RMSZ	$\# Z  > 5$	RMSZ	$\# Z  > 5$
1	A	0.70	0/824	0.69	0/1127
1	C	0.77	0/822	0.76	0/1125
2	B	0.78	0/1338	0.71	0/1818
2	D	0.81	0/1398	0.70	1/1903 (0.1%)
All	All	0.77	0/4382	0.71	1/5973 (0.0%)

There are no bond length outliers.

All (1) bond angle outliers are listed below:

Mol	Chain	Res	Type	Atoms	Z	Observed(°)	Ideal(°)
2	D	78	ARG	NE-CZ-NH1	-5.59	117.50	120.30

There are no chirality outliers.

There are no planarity outliers.

### 5.2 Too-close contacts [i](#)

In the following table, the Non-H and H(model) columns list the number of non-hydrogen atoms and hydrogen atoms in the chain respectively. The H(added) column lists the number of hydrogen atoms added and optimized by MolProbity. The Clashes column lists the number of clashes within the asymmetric unit, whereas Symm-Clashes lists symmetry related clashes.

Mol	Chain	Non-H	H(model)	H(added)	Clashes	Symm-Clashes
1	A	808	0	809	5	0
1	C	806	0	804	3	0
2	B	1310	0	1277	17	0
2	D	1367	0	1346	16	0
3	B	1	0	0	0	0
3	D	1	0	0	0	0

*Continued on next page...*

*Continued from previous page...*

Mol	Chain	Non-H	H(model)	H(added)	Clashes	Symm-Clashes
4	B	1	0	0	0	0
4	D	1	0	0	0	0
5	B	32	0	13	1	0
5	D	32	0	12	1	0
6	A	4	0	0	0	0
6	B	11	0	0	0	0
6	C	5	0	0	0	0
6	D	10	0	0	0	0
7	A	11	0	0	0	0
7	B	24	0	0	0	0
7	C	11	0	0	0	0
7	D	29	0	0	0	0
All	All	4464	0	4261	41	0

The all-atom clashscore is defined as the number of clashes found per 1000 atoms (including hydrogen atoms). The all-atom clashscore for this structure is 5.

All (41) close contacts within the same asymmetric unit are listed below, sorted by their clash magnitude.

Atom-1	Atom-2	Interatomic distance (Å)	Clash overlap (Å)
2:B:115:CYS:SG	2:B:118:THR:HG21	2.24	0.77
2:D:104:LEU:HB3	2:D:159:LEU:HD11	1.66	0.76
2:D:23:GLN:H	5:D:500:GNP:HNB3	1.35	0.74
2:D:99:THR:O	2:D:104:LEU:HD13	1.97	0.64
2:B:115:CYS:SG	2:B:118:THR:CG2	2.85	0.64
2:B:90:LEU:HD11	2:B:104:LEU:CD2	2.27	0.63
2:D:54:LEU:HD13	2:D:63:LEU:HD12	1.82	0.62
1:A:1826:VAL:HG22	1:A:1831:ARG:HG2	1.85	0.58
2:B:23:GLN:H	5:B:500:GNP:HNB3	1.50	0.58
2:D:96:ARG:C	2:D:98:GLU:H	2.09	0.56
2:D:96:ARG:O	2:D:98:GLU:N	2.39	0.56
2:B:115:CYS:O	2:B:118:THR:HG22	2.11	0.51
1:C:1805:VAL:HG13	1:C:1847:VAL:CG1	2.40	0.51
2:B:90:LEU:HD11	2:B:104:LEU:HD23	1.91	0.50
2:B:96:ARG:O	2:B:98:GLU:N	2.44	0.50
2:B:96:ARG:C	2:B:98:GLU:H	2.16	0.49
2:B:90:LEU:HD11	2:B:104:LEU:HD22	1.95	0.48
2:B:104:LEU:HB3	2:B:159:LEU:HD11	1.95	0.48
2:D:14[B]:CYS:HB3	2:D:63:LEU:HD23	1.96	0.47
2:B:14[B]:CYS:HB3	2:B:63:LEU:HD23	1.95	0.47
1:A:1819:ASP:HB3	1:A:1833:LEU:HD22	1.97	0.46

*Continued on next page...*

Continued from previous page...

Atom-1	Atom-2	Interatomic distance (Å)	Clash overlap (Å)
2:D:16:LEU:HB2	2:D:65:LEU:HD23	1.98	0.46
2:D:68:THR:HB	2:D:78:ARG:HG3	1.98	0.45
2:B:90:LEU:HG	2:B:104:LEU:HD22	1.98	0.45
1:A:1772:LEU:O	1:A:1836:LEU:HD12	2.16	0.45
2:D:104:LEU:HB3	2:D:159:LEU:CD1	2.42	0.43
2:D:15:LYS:HE3	2:D:66:TRP:CD1	2.54	0.43
2:B:90:LEU:HD13	2:B:107:TRP:HB3	2.01	0.43
1:A:1756:ALA:HB3	1:A:1850:VAL:HG12	2.01	0.42
1:C:1756:ALA:HB3	1:C:1850:VAL:HG12	2.01	0.42
2:B:90:LEU:CG	2:B:104:LEU:HD22	2.50	0.42
1:C:1772:LEU:O	1:C:1836:LEU:HD12	2.20	0.42
1:A:1805:VAL:HG13	1:A:1847:VAL:CG1	2.51	0.41
2:D:121:LEU:HD23	2:D:121:LEU:N	2.36	0.41
2:D:119:ARG:NH2	2:D:186:LEU:O	2.54	0.41
2:B:100:VAL:HG21	2:B:147:ILE:HG13	2.03	0.41
2:D:12:ALA:HB3	2:D:188:LEU:HD11	2.02	0.41
2:D:104:LEU:HD21	2:D:122:LEU:HD11	2.04	0.40
2:B:90:LEU:CD1	2:B:104:LEU:HD22	2.51	0.40
2:D:115:CYS:N	2:D:116:PRO:CD	2.84	0.40
2:B:111:ILE:O	2:B:115:CYS:HB3	2.21	0.40

There are no symmetry-related clashes.

## 5.3 Torsion angles [i](#)

### 5.3.1 Protein backbone [i](#)

In the following table, the Percentiles column shows the percent Ramachandran outliers of the chain as a percentile score with respect to all X-ray entries followed by that with respect to entries of similar resolution.

The Analysed column shows the number of residues for which the backbone conformation was analysed, and the total number of residues.

Mol	Chain	Analysed	Favoured	Allowed	Outliers	Percentiles	
1	A	105/121 (87%)	104 (99%)	1 (1%)	0	100	100
1	C	105/121 (87%)	103 (98%)	2 (2%)	0	100	100
2	B	167/197 (85%)	160 (96%)	6 (4%)	1 (1%)	30	36
2	D	178/197 (90%)	169 (95%)	8 (4%)	1 (1%)	30	36
All	All	555/636 (87%)	536 (97%)	17 (3%)	2 (0%)	39	48

All (2) Ramachandran outliers are listed below:

Mol	Chain	Res	Type
2	D	97	PRO
2	B	97	PRO

### 5.3.2 Protein sidechains ⓘ

In the following table, the Percentiles column shows the percent sidechain outliers of the chain as a percentile score with respect to all X-ray entries followed by that with respect to entries of similar resolution.

The Analysed column shows the number of residues for which the sidechain conformation was analysed, and the total number of residues.

Mol	Chain	Analysed	Rotameric	Outliers	Percentiles	
1	A	87/103 (84%)	85 (98%)	2 (2%)	58	75
1	C	86/103 (84%)	85 (99%)	1 (1%)	78	89
2	B	144/176 (82%)	139 (96%)	5 (4%)	43	58
2	D	149/176 (85%)	148 (99%)	1 (1%)	88	95
All	All	466/558 (84%)	457 (98%)	9 (2%)	65	81

All (9) residues with a non-rotameric sidechain are listed below:

Mol	Chain	Res	Type
1	A	1746	TYR
1	A	1818	SER
2	B	83	SER
2	B	94	ILE
2	B	117	SER
2	B	140	SER
2	B	178	SER
1	C	1852	CYS
2	D	83	SER

Some sidechains can be flipped to improve hydrogen bonding and reduce clashes. There are no such sidechains identified.

### 5.3.3 RNA ⓘ

There are no RNA molecules in this entry.

## 5.4 Non-standard residues in protein, DNA, RNA chains [i](#)

There are no non-standard protein/DNA/RNA residues in this entry.

## 5.5 Carbohydrates [i](#)

There are no carbohydrates in this entry.

## 5.6 Ligand geometry [i](#)

Of 36 ligands modelled in this entry, 30 are unknown and 4 are monoatomic - leaving 2 for Mogul analysis.

In the following table, the Counts columns list the number of bonds (or angles) for which Mogul statistics could be retrieved, the number of bonds (or angles) that are observed in the model and the number of bonds (or angles) that are defined in the chemical component dictionary. The Link column lists molecule types, if any, to which the group is linked. The Z score for a bond length (or angle) is the number of standard deviations the observed value is removed from the expected value. A bond length (or angle) with  $|Z| > 2$  is considered an outlier worth inspection. RMSZ is the root-mean-square of all Z scores of the bond lengths (or angles).

Mol	Type	Chain	Res	Link	Bond lengths			Bond angles		
					Counts	RMSZ	# Z  > 2	Counts	RMSZ	# Z  > 2
5	GNP	B	500	3	28,34,34	1.98	8 (28%)	33,54,54	2.34	6 (18%)
5	GNP	D	500	3	28,34,34	2.04	6 (21%)	33,54,54	2.17	8 (24%)

In the following table, the Chirals column lists the number of chiral outliers, the number of chiral centers analysed, the number of these observed in the model and the number defined in the chemical component dictionary. Similar counts are reported in the Torsion and Rings columns. '-' means no outliers of that kind were identified.

Mol	Type	Chain	Res	Link	Chirals	Torsions	Rings
5	GNP	B	500	3	-	0/12/38/38	0/3/3/3
5	GNP	D	500	3	-	0/12/38/38	0/3/3/3

All (14) bond length outliers are listed below:

Mol	Chain	Res	Type	Atoms	Z	Observed(Å)	Ideal(Å)
5	B	500	GNP	PB-O2B	-4.11	1.45	1.56
5	D	500	GNP	PB-O3A	-3.78	1.54	1.59
5	D	500	GNP	PB-O2B	-3.70	1.46	1.56
5	D	500	GNP	O3'-C3'	-3.63	1.34	1.43
5	B	500	GNP	PG-O2G	-3.18	1.47	1.56

*Continued on next page...*

*Continued from previous page...*

Mol	Chain	Res	Type	Atoms	Z	Observed(Å)	Ideal(Å)
5	D	500	GNP	PG-O3G	-3.04	1.48	1.56
5	B	500	GNP	PB-N3B	-2.89	1.55	1.63
5	B	500	GNP	PB-O3A	-2.08	1.56	1.59
5	B	500	GNP	PA-O2A	-2.07	1.46	1.54
5	B	500	GNP	C8-N7	-2.02	1.30	1.34
5	D	500	GNP	C6-N1	3.94	1.40	1.33
5	B	500	GNP	C6-N1	4.13	1.40	1.33
5	D	500	GNP	PG-O1G	5.29	1.52	1.46
5	B	500	GNP	PG-O1G	5.49	1.52	1.46

All (14) bond angle outliers are listed below:

Mol	Chain	Res	Type	Atoms	Z	Observed(°)	Ideal(°)
5	B	500	GNP	C5-C6-N1	-7.73	113.02	123.59
5	D	500	GNP	C5-C6-N1	-7.64	113.15	123.59
5	B	500	GNP	O1G-PG-N3B	-7.20	100.86	111.90
5	D	500	GNP	O3G-PG-O1G	-3.05	105.39	113.49
5	D	500	GNP	C2'-C1'-N9	-2.79	110.02	114.29
5	B	500	GNP	O3G-PG-O1G	-2.68	106.36	113.49
5	D	500	GNP	C6-C5-C4	-2.18	118.29	120.90
5	D	500	GNP	N3-C2-N1	-2.09	124.27	127.44
5	B	500	GNP	O2A-PA-O3A	2.06	114.43	105.09
5	D	500	GNP	O2A-PA-O3A	2.26	115.34	105.09
5	B	500	GNP	O3G-PG-O2G	2.45	114.85	107.58
5	D	500	GNP	O2B-PB-O1B	3.27	116.82	110.00
5	B	500	GNP	C6-N1-C2	5.19	123.14	115.94
5	D	500	GNP	C6-N1-C2	5.59	123.70	115.94

There are no chirality outliers.

There are no torsion outliers.

There are no ring outliers.

2 monomers are involved in 2 short contacts:

Mol	Chain	Res	Type	Clashes	Symm-Clashes
5	B	500	GNP	1	0
5	D	500	GNP	1	0

## 5.7 Other polymers ⓘ

There are no such residues in this entry.

## 5.8 Polymer linkage issues

There are no chain breaks in this entry.

## 6 Fit of model and data

### 6.1 Protein, DNA and RNA chains

In the following table, the column labelled ‘#RSRZ> 2’ contains the number (and percentage) of RSRZ outliers, followed by percent RSRZ outliers for the chain as percentile scores relative to all X-ray entries and entries of similar resolution. The OWAB column contains the minimum, median, 95<sup>th</sup> percentile and maximum values of the occupancy-weighted average B-factor per residue. The column labelled ‘Q< 0.9’ lists the number of (and percentage) of residues with an average occupancy less than 0.9.

Mol	Chain	Analysed	<RSRZ>	#RSRZ>2	OWAB(Å <sup>2</sup> )	Q<0.9
1	A	107/121 (88%)	0.78	18 (16%) 2 3	28, 35, 41, 47	0
1	C	107/121 (88%)	0.42	8 (7%) 17 24	30, 34, 40, 48	0
2	B	171/197 (86%)	0.68	20 (11%) 6 10	31, 35, 42, 45	0
2	D	180/197 (91%)	0.58	9 (5%) 32 41	29, 34, 44, 46	0
All	All	565/636 (88%)	0.62	55 (9%) 10 14	28, 34, 42, 48	0

All (55) RSRZ outliers are listed below:

Mol	Chain	Res	Type	RSRZ
1	A	1852	CYS	7.3
2	B	13	ARG	5.5
2	B	187[A]	CYS	5.5
2	B	59	GLN	5.4
1	C	1852	CYS	5.3
1	A	1746	TYR	5.2
2	B	89	LEU	4.4
2	B	84	ASP	4.0
1	C	1746	TYR	3.9
1	A	1801	ARG	3.9
1	C	1802	THR	3.6
2	D	89	LEU	3.5
2	D	84	ASP	3.5
1	A	1758	GLY	3.5
2	D	99	THR	3.3
1	A	1761	ALA	3.2
1	A	1796	GLN	3.2
2	B	185	MET	3.0
2	D	8	GLN	2.9
2	D	117	SER	2.9
1	C	1817	LEU	2.9

*Continued on next page...*



*Continued from previous page...*

Mol	Chain	Res	Type	RSRZ
2	D	185	MET	2.9
1	A	1826	VAL	2.8
1	A	1790	LYS	2.8
2	B	88	VAL	2.8
2	B	121	LEU	2.8
1	A	1791	GLY	2.7
1	A	1757	VAL	2.6
1	A	1760	GLY	2.6
2	B	60	ARG	2.6
2	B	99	THR	2.6
2	D	51	THR	2.5
2	B	19	VAL	2.5
1	C	1801	ARG	2.5
1	A	1799	ASP	2.5
1	A	1825	GLU	2.5
1	C	1796	GLN	2.5
2	B	123	ILE	2.5
2	B	62	GLU	2.4
1	C	1807	TRP	2.4
1	A	1751	LEU	2.4
1	A	1817	LEU	2.4
2	B	17	VAL	2.3
1	A	1802	THR	2.3
2	D	180	PHE	2.3
2	D	188	LEU	2.3
1	A	1759	PRO	2.3
2	B	16	LEU	2.3
2	B	103	ALA	2.2
2	B	122	LEU	2.2
1	C	1791	GLY	2.2
2	B	141	HIS	2.1
2	B	18	LEU	2.1
2	B	186	LEU	2.0
1	A	1851	PRO	2.0

## 6.2 Non-standard residues in protein, DNA, RNA chains ⓘ

There are no non-standard protein/DNA/RNA residues in this entry.

## 6.3 Carbohydrates ⓘ

There are no carbohydrates in this entry.

## 6.4 Ligands ⓘ

In the following table, the Atoms column lists the number of modelled atoms in the group and the number defined in the chemical component dictionary. LLDF column lists the quality of electron density of the group with respect to its neighbouring residues in protein, DNA or RNA chains. The B-factors column lists the minimum, median, 95<sup>th</sup> percentile and maximum values of B factors of atoms in the group. The column labelled 'Q< 0.9' lists the number of atoms with occupancy less than 0.9.

Mol	Type	Chain	Res	Atoms	RSCC	RSR	LLDF	B-factors(Å <sup>2</sup> )	Q<0.9
6	UNX	D	554	1/1	0.37	3.53	148.46	2,2,2,2	1
6	UNX	B	560	1/1	0.02	3.09	119.42	13,13,13,13	1
6	UNX	B	553	1/1	0.38	2.09	114.56	2,2,2,2	1
6	UNX	A	11	1/1	0.22	4.60	88.47	2,2,2,2	1
6	UNX	D	555	1/1	0.23	5.13	79.31	2,2,2,2	1
6	UNX	D	560	1/1	-0.34	2.51	74.23	2,2,2,2	1
6	UNX	C	20	1/1	0.24	2.70	70.97	2,2,2,2	1
6	UNX	C	2	1/1	0.29	2.15	65.14	2,2,2,2	1
6	UNX	C	9	1/1	0.35	3.48	59.99	2,2,2,2	1
6	UNX	B	556	1/1	-0.32	1.72	49.18	38,38,38,38	1
6	UNX	B	554	1/1	0.66	2.01	41.09	2,2,2,2	1
6	UNX	A	1	1/1	-0.05	2.18	36.40	2,2,2,2	1
6	UNX	B	559	1/1	-0.15	2.58	35.08	2,2,2,2	1
6	UNX	D	552	1/1	-0.07	2.39	24.11	2,2,2,2	1
3	MG	D	550	1/1	0.91	0.11	-0.80	36,36,36,36	0
5	GNP	B	500	32/32	0.97	0.11	-1.00	29,31,35,39	0
5	GNP	D	500	32/32	0.97	0.10	-1.11	28,31,33,34	0
3	MG	B	550	1/1	0.91	0.07	-1.45	36,36,36,36	0
4	CA	D	551	1/1	0.97	0.03	-3.12	32,32,32,32	0
4	CA	B	551	1/1	0.99	0.03	-3.34	30,30,30,30	0
6	UNX	B	552	1/1	-0.04	3.41	-	2,2,2,2	1
6	UNX	D	553	1/1	0.48	2.67	-	2,2,2,2	1
6	UNX	B	555	1/1	0.35	3.35	-	2,2,2,2	1
6	UNX	A	5	1/1	0.54	4.00	-	2,2,2,2	1
6	UNX	B	562	1/1	0.29	1.29	-	2,2,2,2	1
6	UNX	D	557	1/1	0.76	1.29	-	15,15,15,15	1
6	UNX	D	559	1/1	-0.08	1.92	-	2,2,2,2	1
6	UNX	A	30	1/1	0.30	2.20	-	2,2,2,2	1
6	UNX	C	3	1/1	0.24	2.70	-	2,2,2,2	1
6	UNX	D	556	1/1	0.48	3.36	-	2,2,2,2	1

*Continued on next page...*

*Continued from previous page...*

Mol	Type	Chain	Res	Atoms	RSCC	RSR	LLDF	B-factors( $\text{\AA}^2$ )	Q<0.9
6	UNX	D	558	1/1	0.62	1.84	-	2,2,2,2	1
6	UNX	B	558	1/1	0.71	1.96	-	2,2,2,2	1
6	UNX	D	561	1/1	0.39	1.38	-	2,2,2,2	1
6	UNX	B	557	1/1	0.08	3.50	-	2,2,2,2	1
6	UNX	C	28	1/1	0.32	2.02	-	2,2,2,2	1
6	UNX	B	561	1/1	-0.49	2.36	-	2,2,2,2	1

## 6.5 Other polymers [i](#)

There are no such residues in this entry.