



Full wwPDB X-ray Structure Validation Report ⓘ

Jan 31, 2016 – 09:58 PM GMT

PDB ID : 1RG9
Title : S-Adenosylmethionine synthetase complexed with SAM and PPNP
Authors : Komoto, J.; Yamada, T.; Takata, Y.; Markham, G.D.; Takusagawa, F.
Deposited on : 2003-11-11
Resolution : 2.50 Å(reported)

This is a Full wwPDB X-ray Structure Validation Report for a publicly released PDB entry.
We welcome your comments at validation@mail.wwpdb.org
A user guide is available at
<http://wwpdb.org/validation/2016/XrayValidationReportHelp>
with specific help available everywhere you see the ⓘ symbol.

The following versions of software and data (see [references ⓘ](#)) were used in the production of this report:

MolProbity : 4.02b-467
Mogul : 1.7 (RC4), CSD as536be (2015)
Xtriage (Phenix) : 1.9-1692
EDS : rb-20026688
Percentile statistics : 20151230.v01 (using entries in the PDB archive December 30th 2015)
Refmac : 5.8.0135
CCP4 : 6.5.0
Ideal geometry (proteins) : Engh & Huber (2001)
Ideal geometry (DNA, RNA) : Parkinson et al. (1996)
Validation Pipeline (wwPDB-VP) : trunk26865

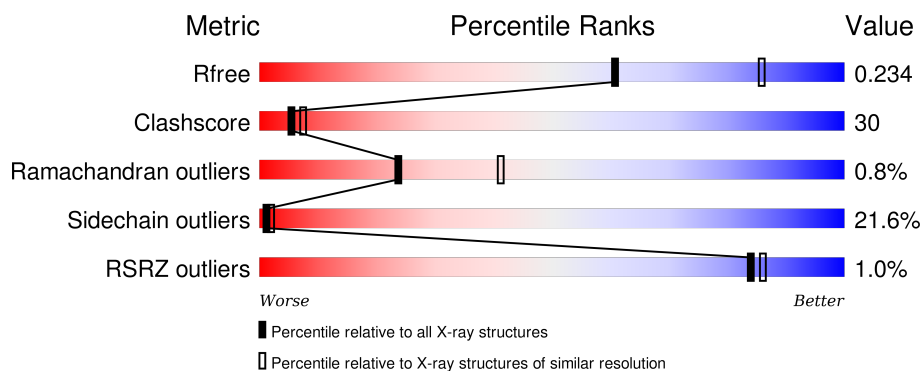
1 Overall quality at a glance

The following experimental techniques were used to determine the structure:

X-RAY DIFFRACTION

The reported resolution of this entry is 2.50 Å.

Percentile scores (ranging between 0-100) for global validation metrics of the entry are shown in the following graphic. The table shows the number of entries on which the scores are based.



Metric	Whole archive (#Entries)	Similar resolution (#Entries, resolution range(Å))
R_{free}	91344	3553 (2.50-2.50)
Clashscore	102246	4242 (2.50-2.50)
Ramachandran outliers	100387	4156 (2.50-2.50)
Sidechain outliers	100360	4158 (2.50-2.50)
RSRZ outliers	91569	3562 (2.50-2.50)

The table below summarises the geometric issues observed across the polymeric chains and their fit to the electron density. The red, orange, yellow and green segments on the lower bar indicate the fraction of residues that contain outliers for ≥ 3 , 2, 1 and 0 types of geometric quality criteria. A grey segment represents the fraction of residues that are not modelled. The numeric value for each fraction is indicated below the corresponding segment, with a dot representing fractions $\leq 5\%$. The upper red bar (where present) indicates the fraction of residues that have poor fit to the electron density. The numeric value is given above the bar.

Mol	Chain	Length	Quality of chain
1	A	383	<div> <div></div> <div>52% 37% 11%</div> </div>
1	B	383	<div> <div></div> <div>50% 39% 11%</div> </div>
1	C	383	<div> <div></div> <div>49% 38% 13%</div> </div>
1	D	383	<div> <div></div> <div>51% 37% 11%</div> </div>

The following table lists non-polymeric compounds, carbohydrate monomers and non-standard residues in protein, DNA, RNA chains that are outliers for geometric or electron-density-fit crite-

ria:

Mol	Type	Chain	Res	Chirality	Geometry	Clashes	Electron density
3	MG	A	388	-	-	-	X
3	MG	B	487	-	-	-	X
3	MG	C	588	-	-	-	X
3	MG	C	687	-	-	-	X
3	MG	D	688	-	-	-	X
5	PPK	A	384	-	-	X	-
5	PPK	B	484	-	-	X	-

2 Entry composition

There are 6 unique types of molecules in this entry. The entry contains 11960 atoms, of which 0 are hydrogens and 0 are deuteriums.

In the tables below, the ZeroOcc column contains the number of atoms modelled with zero occupancy, the AltConf column contains the number of residues with at least one atom in alternate conformation and the Trace column contains the number of residues modelled with at most 2 atoms.

- Molecule 1 is a protein called S-adenosylmethionine synthetase.

Mol	Chain	Residues	Atoms					ZeroOcc	AltConf	Trace
1	A	383	Total	C	N	O	S	0	0	0
			2942	1856	503	570	13			
1	B	383	Total	C	N	O	S	0	0	0
			2942	1856	503	570	13			
1	C	383	Total	C	N	O	S	0	0	0
			2942	1856	503	570	13			
1	D	383	Total	C	N	O	S	0	0	0
			2942	1856	503	570	13			

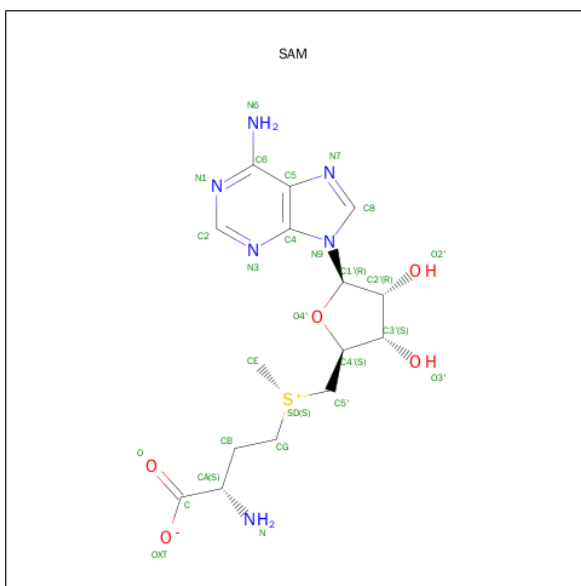
- Molecule 2 is POTASSIUM ION (three-letter code: K) (formula: K).

Mol	Chain	Residues	Atoms		ZeroOcc	AltConf
2	B	1	Total	K	0	0
			1	1		
2	A	1	Total	K	0	0
			1	1		
2	D	1	Total	K	0	0
			1	1		
2	C	1	Total	K	0	0
			1	1		

- Molecule 3 is MAGNESIUM ION (three-letter code: MG) (formula: Mg).

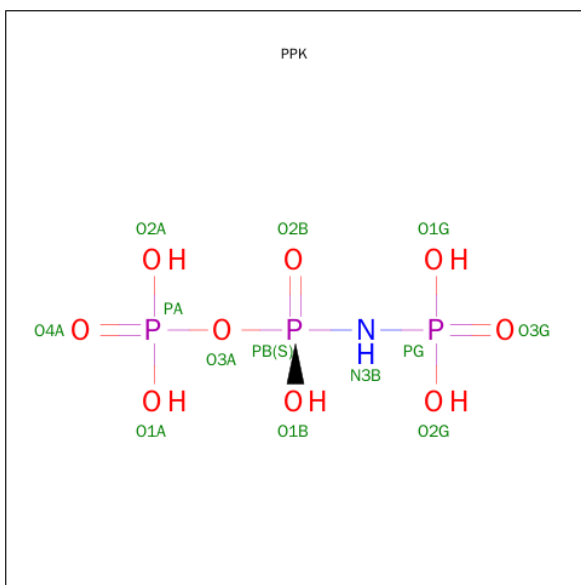
Mol	Chain	Residues	Atoms		ZeroOcc	AltConf
3	B	2	Total	Mg	0	0
			2	2		
3	A	2	Total	Mg	0	0
			2	2		
3	D	2	Total	Mg	0	0
			2	2		
3	C	2	Total	Mg	0	0
			2	2		

- Molecule 4 is S-ADENOSYLMETHIONINE (three-letter code: SAM) (formula: $C_{15}H_{22}N_6O_5S$).



Mol	Chain	Residues	Atoms					ZeroOcc	AltConf
4	A	1	Total	C	N	O	S	0	0
			27	15	6	5	1		
4	B	1	Total	C	N	O	S	0	0
			27	15	6	5	1		
4	C	1	Total	C	N	O	S	0	0
			27	15	6	5	1		
4	C	1	Total	C	N	O	S	0	0
			27	15	6	5	1		

- Molecule 5 is (DIPHOSPHONO)AMINOPHOSPHONIC ACID (three-letter code: PPK) (formula: $H_6NO_9P_3$).



Mol	Chain	Residues	Atoms				ZeroOcc	AltConf
5	A	1	Total	N	O	P	0	0
			13	1	9	3		
5	B	1	Total	N	O	P	0	0
			13	1	9	3		
5	C	1	Total	N	O	P	0	0
			13	1	9	3		
5	D	1	Total	N	O	P	0	0
			13	1	9	3		

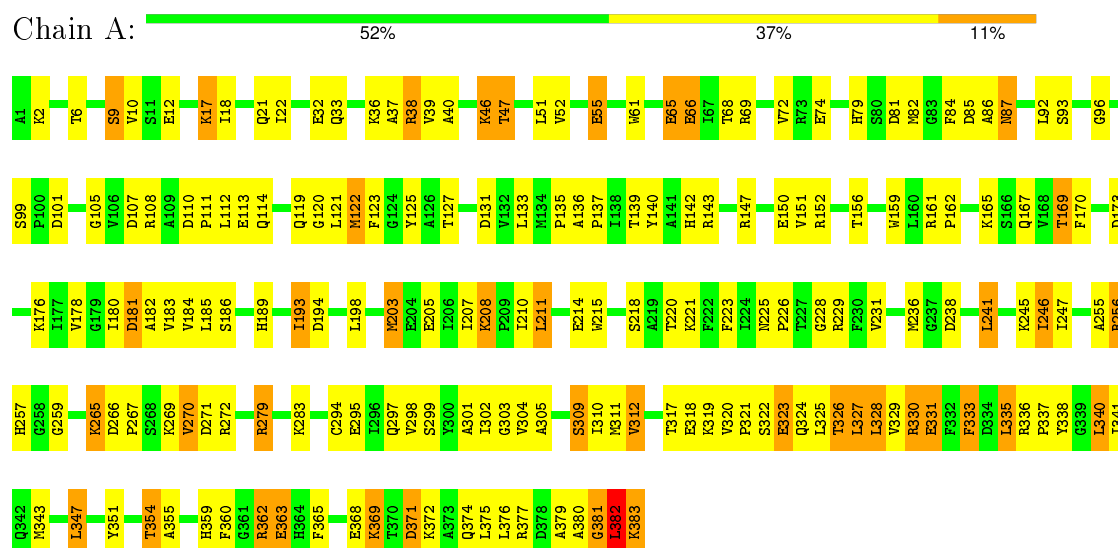
- Molecule 6 is water.

Mol	Chain	Residues	Atoms		ZeroOcc	AltConf
6	A	6	Total	O	0	0
			6	6		
6	B	3	Total	O	0	0
			3	3		
6	C	7	Total	O	0	0
			7	7		
6	D	4	Total	O	0	0
			4	4		

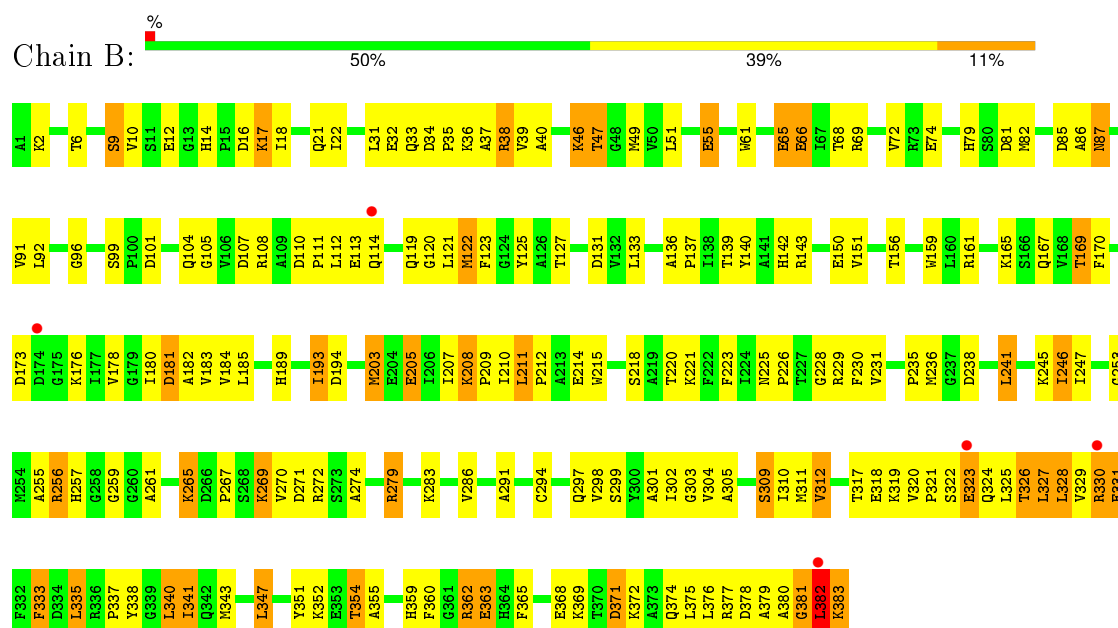
3 Residue-property plots

These plots are drawn for all protein, RNA and DNA chains in the entry. The first graphic for a chain summarises the proportions of errors displayed in the second graphic. The second graphic shows the sequence view annotated by issues in geometry and electron density. Residues are color-coded according to the number of geometric quality criteria for which they contain at least one outlier: green = 0, yellow = 1, orange = 2 and red = 3 or more. A red dot above a residue indicates a poor fit to the electron density ($RSRZ > 2$). Stretches of 2 or more consecutive residues without any outlier are shown as a green connector. Residues present in the sample, but not in the model, are shown in grey.

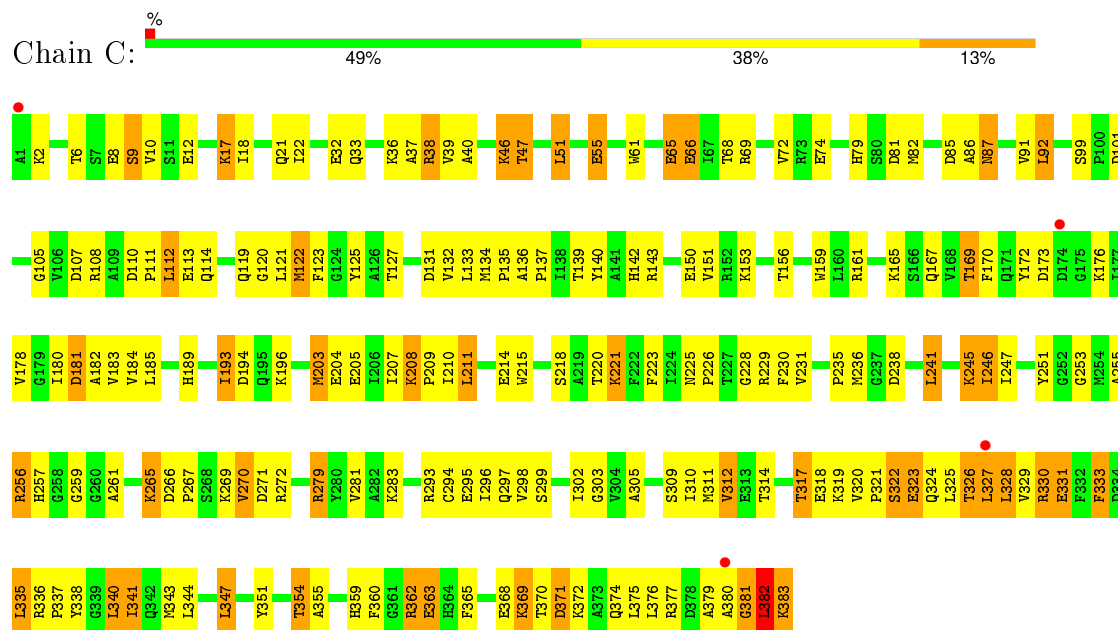
• Molecule 1: S-adenosylmethionine synthetase



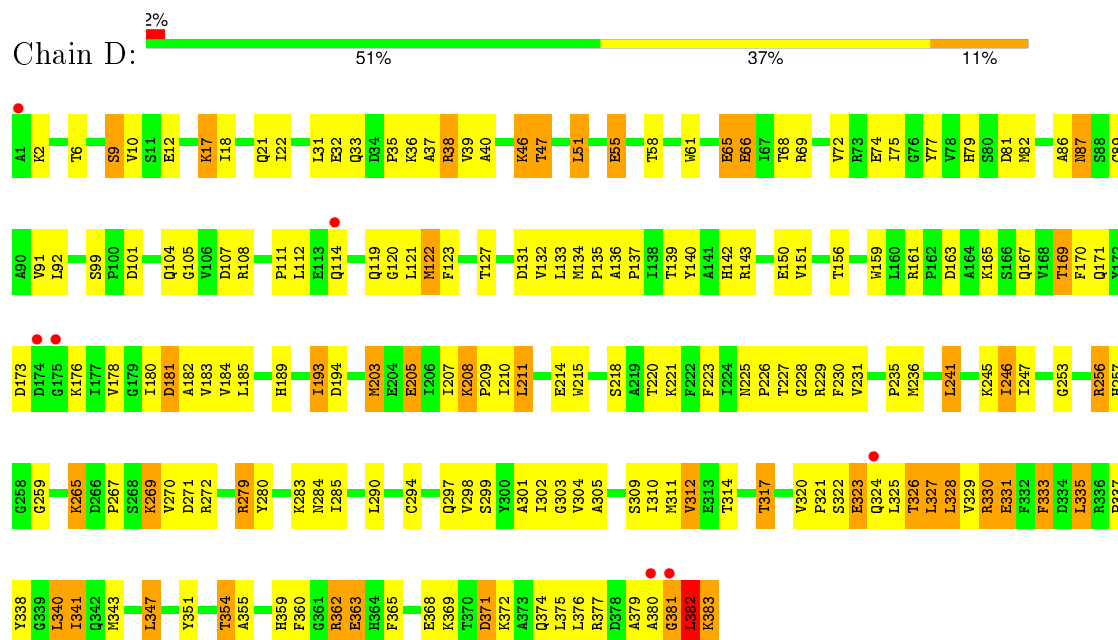
• Molecule 1: S-adenosylmethionine synthetase



● Molecule 1: S-adenosylmethionine synthetase



● Molecule 1: S-adenosylmethionine synthetase



4 Data and refinement statistics

Property	Value	Source
Space group	P 21 21 21	Depositor
Cell constants a, b, c, α , β , γ	225.82Å 69.13Å 118.23Å 90.00° 90.00° 90.00°	Depositor
Resolution (Å)	10.00 – 2.50 10.99 – 2.51	Depositor EDS
% Data completeness (in resolution range)	(Not available) (10.00-2.50) 71.3 (10.99-2.51)	Depositor EDS
R_{merge}	(Not available)	Depositor
R_{sym}	(Not available)	Depositor
$\langle I/\sigma(I) \rangle$ ¹	5.39 (at 2.51Å)	Xtriage
Refinement program	X-PLOR 3.851	Depositor
R, R_{free}	0.211 , 0.241 0.207 , 0.234	Depositor DCC
R_{free} test set	4539 reflections (10.07%)	DCC
Wilson B-factor (Å ²)	26.9	Xtriage
Anisotropy	0.175	Xtriage
Bulk solvent k_{sol} (e/Å ³), B_{sol} (Å ²)	0.18 , 48.0	EDS
Estimated twinning fraction	No twinning to report.	Xtriage
L-test for twinning ²	$\langle L \rangle = 0.49$, $\langle L^2 \rangle = 0.32$	Xtriage
Outliers	1 of 45329 reflections (0.002%)	Xtriage
F_o, F_c correlation	0.93	EDS
Total number of atoms	11960	wwPDB-VP
Average B, all atoms (Å ²)	19.0	wwPDB-VP

Xtriage's analysis on translational NCS is as follows: *The analyses of the Patterson function reveals a significant off-origin peak that is 40.07 % of the origin peak, indicating pseudo translational symmetry. The chance of finding a peak of this or larger height randomly in a structure without pseudo translational symmetry is equal to 2.8888e-04. The detected translational NCS is most likely also responsible for the elevated intensity ratio.*

¹ Intensities estimated from amplitudes.

² Theoretical values of $\langle |L| \rangle$, $\langle L^2 \rangle$ for acentric reflections are 0.5, 0.375 respectively for untwinned datasets, and 0.333, 0.2 for perfectly twinned datasets.

5 Model quality [i](#)

5.1 Standard geometry [i](#)

Bond lengths and bond angles in the following residue types are not validated in this section: PPK, K, MG, SAM

The Z score for a bond length (or angle) is the number of standard deviations the observed value is removed from the expected value. A bond length (or angle) with $|Z| > 5$ is considered an outlier worth inspection. RMSZ is the root-mean-square of all Z scores of the bond lengths (or angles).

Mol	Chain	Bond lengths		Bond angles	
		RMSZ	# Z >5	RMSZ	# Z >5
1	A	0.43	0/3001	0.65	0/4068
1	B	0.41	0/3001	0.64	0/4068
1	C	0.40	0/3001	0.63	0/4068
1	D	0.39	0/3001	0.63	0/4068
All	All	0.41	0/12004	0.64	0/16272

There are no bond length outliers.

There are no bond angle outliers.

There are no chirality outliers.

There are no planarity outliers.

5.2 Too-close contacts [i](#)

In the following table, the Non-H and H(model) columns list the number of non-hydrogen atoms and hydrogen atoms in the chain respectively. The H(added) column lists the number of hydrogen atoms added and optimized by MolProbity. The Clashes column lists the number of clashes within the asymmetric unit, whereas Symm-Clashes lists symmetry related clashes.

Mol	Chain	Non-H	H(model)	H(added)	Clashes	Symm-Clashes
1	A	2942	0	2908	181	0
1	B	2942	0	2908	184	0
1	C	2942	0	2908	197	0
1	D	2942	0	2908	180	0
2	A	1	0	0	0	0
2	B	1	0	0	0	0
2	C	1	0	0	0	0
2	D	1	0	0	0	0
3	A	2	0	0	0	0

Continued on next page...

Continued from previous page...

Mol	Chain	Non-H	H(model)	H(added)	Clashes	Symm-Clashes
3	B	2	0	0	0	0
3	C	2	0	0	0	0
3	D	2	0	0	0	0
4	A	27	0	22	2	0
4	B	27	0	22	2	0
4	C	54	0	44	2	0
5	A	13	0	1	4	0
5	B	13	0	1	4	0
5	C	13	0	1	3	0
5	D	13	0	1	3	0
6	A	6	0	0	0	0
6	B	3	0	0	0	0
6	C	7	0	0	1	0
6	D	4	0	0	1	0
All	All	11960	0	11724	705	0

The all-atom clashscore is defined as the number of clashes found per 1000 atoms (including hydrogen atoms). The all-atom clashscore for this structure is 30.

All (705) close contacts within the same asymmetric unit are listed below, sorted by their clash magnitude.

Atom-1	Atom-2	Interatomic distance (Å)	Clash overlap (Å)
1:C:241:LEU:HD11	1:D:241:LEU:HD11	1.34	1.06
1:A:10:VAL:HG12	1:A:165:LYS:HG2	1.43	0.99
1:B:122:MET:HG2	1:B:298:VAL:HG23	1.46	0.98
1:B:10:VAL:HG12	1:B:165:LYS:HG2	1.45	0.97
1:D:10:VAL:HG12	1:D:165:LYS:HG2	1.47	0.96
1:C:107:ASP:HA	1:C:114:GLN:HE21	1.34	0.93
1:A:241:LEU:HD11	1:B:241:LEU:HD11	1.50	0.92
1:B:267:PRO:HB2	1:B:341:ILE:HD13	1.52	0.92
1:B:72:VAL:HG12	1:B:86:ALA:HB2	1.51	0.92
1:D:72:VAL:HG12	1:D:86:ALA:HB2	1.52	0.92
1:A:122:MET:HG2	1:A:298:VAL:HG23	1.51	0.90
1:D:107:ASP:HA	1:D:114:GLN:HE21	1.36	0.90
1:C:10:VAL:HG12	1:C:165:LYS:HG2	1.53	0.90
1:A:107:ASP:HA	1:A:114:GLN:HE21	1.34	0.89
5:C:584:PPK:H3B	1:D:265:LYS:NZ	1.71	0.88
1:B:107:ASP:HA	1:B:114:GLN:HE21	1.37	0.88
1:D:122:MET:HG2	1:D:298:VAL:HG23	1.56	0.88
1:B:79:HIS:HD2	1:B:81:ASP:H	1.19	0.87
1:B:167:GLN:HB3	1:B:184:VAL:HB	1.56	0.86

Continued on next page...

Continued from previous page...

Atom-1	Atom-2	Interatomic distance (Å)	Clash overlap (Å)
1:B:33:GLN:NE2	1:B:61:TRP:H	1.73	0.86
1:D:267:PRO:HB2	1:D:341:ILE:HD13	1.58	0.86
1:C:267:PRO:HB2	1:C:341:ILE:HD13	1.57	0.85
1:C:122:MET:HG2	1:C:298:VAL:HG23	1.56	0.85
1:A:330:ARG:HH21	1:A:331:GLU:HA	1.40	0.85
1:A:72:VAL:HG12	1:A:86:ALA:HB2	1.57	0.85
1:B:330:ARG:HH21	1:B:331:GLU:HA	1.41	0.85
1:B:33:GLN:HE22	1:B:61:TRP:H	1.20	0.85
1:A:267:PRO:HB2	1:A:341:ILE:HD13	1.59	0.85
1:D:330:ARG:HH21	1:D:331:GLU:HA	1.40	0.84
1:C:330:ARG:HH21	1:C:331:GLU:HA	1.40	0.84
1:C:139:THR:O	1:C:143:ARG:HG3	1.77	0.84
1:A:33:GLN:NE2	1:A:61:TRP:H	1.76	0.84
1:C:79:HIS:HD2	1:C:81:ASP:H	1.22	0.84
1:A:33:GLN:HE22	1:A:61:TRP:H	1.24	0.83
1:C:72:VAL:HG12	1:C:86:ALA:HB2	1.60	0.83
1:A:167:GLN:HB3	1:A:184:VAL:HB	1.58	0.83
1:A:382:LEU:HG	1:A:383:LYS:N	1.92	0.82
1:D:79:HIS:HD2	1:D:81:ASP:H	1.26	0.82
1:C:167:GLN:HB3	1:C:184:VAL:HB	1.62	0.82
1:C:265:LYS:NZ	5:D:684:PPK:H3B	1.78	0.81
1:B:257:HIS:HD2	1:B:259:GLY:H	1.28	0.81
1:C:151:VAL:HG23	1:C:156:THR:HB	1.61	0.81
1:C:257:HIS:HD2	1:C:259:GLY:H	1.28	0.81
1:B:79:HIS:CD2	1:B:81:ASP:H	1.98	0.81
1:D:12:GLU:HB2	1:D:21:GLN:HE22	1.45	0.80
1:D:257:HIS:HD2	1:D:259:GLY:H	1.29	0.80
1:D:167:GLN:HB3	1:D:184:VAL:HB	1.64	0.79
1:B:12:GLU:HB2	1:B:21:GLN:HE22	1.48	0.79
1:C:382:LEU:HG	1:C:383:LYS:N	1.96	0.79
1:D:139:THR:O	1:D:143:ARG:HG3	1.83	0.79
1:A:312:VAL:HG13	1:A:326:THR:HG23	1.64	0.78
1:A:330:ARG:HE	1:A:331:GLU:N	1.80	0.78
1:A:79:HIS:HD2	1:A:81:ASP:H	1.28	0.78
1:C:79:HIS:CD2	1:C:81:ASP:H	2.01	0.78
1:A:257:HIS:HD2	1:A:259:GLY:H	1.30	0.77
1:D:33:GLN:NE2	1:D:61:TRP:H	1.82	0.77
1:B:151:VAL:HG23	1:B:156:THR:HB	1.64	0.77
1:C:351:TYR:O	1:C:354:THR:HG22	1.84	0.77
1:D:382:LEU:HG	1:D:383:LYS:N	1.97	0.77
1:C:12:GLU:HB2	1:C:21:GLN:HE22	1.47	0.77

Continued on next page...

Continued from previous page...

Atom-1	Atom-2	Interatomic distance (Å)	Clash overlap (Å)
1:A:151:VAL:HG23	1:A:156:THR:HB	1.64	0.77
1:B:139:THR:O	1:B:143:ARG:HG3	1.85	0.77
1:B:133:LEU:HD23	1:B:283:LYS:HE2	1.66	0.77
1:D:330:ARG:HE	1:D:331:GLU:N	1.82	0.77
1:D:33:GLN:HE22	1:D:61:TRP:H	1.30	0.76
1:C:330:ARG:HE	1:C:331:GLU:N	1.83	0.76
1:D:22:ILE:HD13	1:D:68:THR:HG23	1.68	0.76
1:C:121:LEU:HD13	1:D:6:THR:O	1.86	0.76
1:B:330:ARG:HE	1:B:331:GLU:N	1.84	0.75
5:C:584:PPK:H3B	1:D:265:LYS:HZ2	1.33	0.75
1:D:79:HIS:CD2	1:D:81:ASP:H	2.04	0.75
1:B:22:ILE:HD13	1:B:68:THR:HG23	1.67	0.75
1:B:312:VAL:HG13	1:B:326:THR:HG23	1.69	0.75
1:A:79:HIS:CD2	1:A:81:ASP:H	2.04	0.75
1:A:139:THR:O	1:A:143:ARG:HG3	1.87	0.75
1:B:347:LEU:HD22	1:B:347:LEU:H	1.50	0.74
1:C:33:GLN:HE22	1:C:61:TRP:H	1.31	0.74
1:C:226:PRO:HB2	1:D:302:ILE:O	1.87	0.74
1:C:312:VAL:HG13	1:C:326:THR:HG23	1.69	0.74
1:A:12:GLU:HB2	1:A:21:GLN:HE22	1.51	0.74
1:D:133:LEU:HD23	1:D:283:LYS:HE2	1.68	0.74
1:C:33:GLN:NE2	1:C:61:TRP:H	1.85	0.73
1:C:241:LEU:HG	1:D:241:LEU:HG	1.70	0.73
1:B:351:TYR:O	1:B:354:THR:HG22	1.89	0.73
1:D:351:TYR:O	1:D:354:THR:HG22	1.89	0.72
1:C:6:THR:O	1:D:121:LEU:HD13	1.88	0.72
1:A:351:TYR:O	1:A:354:THR:HG22	1.88	0.72
1:B:382:LEU:HG	1:B:383:LYS:N	2.02	0.72
1:D:330:ARG:HH21	1:D:331:GLU:CA	2.02	0.72
1:D:320:VAL:HB	1:D:324:GLN:NE2	2.05	0.72
1:C:302:ILE:O	1:D:226:PRO:HB2	1.90	0.72
1:A:22:ILE:HD13	1:A:68:THR:HG23	1.70	0.71
1:C:22:ILE:HD13	1:C:68:THR:HG23	1.72	0.71
1:B:330:ARG:HH21	1:B:331:GLU:CA	2.02	0.71
1:B:17:LYS:O	1:B:21:GLN:HG3	1.89	0.71
1:D:151:VAL:HG23	1:D:156:THR:HB	1.73	0.71
1:C:328:LEU:HD23	1:C:376:LEU:HD22	1.73	0.70
1:A:265:LYS:NZ	5:B:484:PPK:H3B	1.90	0.69
1:C:305:ALA:O	1:C:337:PRO:HD2	1.92	0.69
1:C:133:LEU:HD23	1:C:283:LYS:HE2	1.74	0.69
1:D:337:PRO:HB2	1:D:338:TYR:CD1	2.27	0.69

Continued on next page...

Continued from previous page...

Atom-1	Atom-2	Interatomic distance (Å)	Clash overlap (Å)
1:A:69:ARG:HD3	1:A:86:ALA:O	1.93	0.69
1:C:184:VAL:HG22	1:C:223:PHE:HB2	1.75	0.69
1:C:193:ILE:HG12	1:C:194:ASP:N	2.07	0.69
1:B:6:THR:HG23	1:B:169:THR:HG22	1.74	0.69
1:A:330:ARG:HH21	1:A:331:GLU:CA	2.06	0.68
1:D:312:VAL:HG13	1:D:326:THR:HG23	1.74	0.68
1:B:69:ARG:HD3	1:B:86:ALA:O	1.93	0.68
1:C:330:ARG:HH21	1:C:331:GLU:CA	2.04	0.68
1:D:305:ALA:O	1:D:337:PRO:HD2	1.94	0.68
1:C:257:HIS:CD2	1:C:259:GLY:H	2.12	0.67
1:B:305:ALA:O	1:B:337:PRO:HD2	1.95	0.67
1:A:305:ALA:O	1:A:337:PRO:HD2	1.94	0.67
1:C:328:LEU:HD11	1:C:379:ALA:CB	2.24	0.67
1:C:320:VAL:HB	1:C:324:GLN:NE2	2.10	0.66
1:A:347:LEU:HD22	1:A:347:LEU:H	1.59	0.66
5:C:584:PPK:N3B	1:D:265:LYS:NZ	2.43	0.66
1:B:184:VAL:HG22	1:B:223:PHE:HB2	1.75	0.66
1:D:330:ARG:NH2	1:D:331:GLU:HG3	2.09	0.66
1:D:257:HIS:CD2	1:D:259:GLY:H	2.13	0.66
1:D:328:LEU:HD23	1:D:376:LEU:HD22	1.77	0.66
1:D:298:VAL:HG12	1:D:310:ILE:HG12	1.77	0.66
1:B:257:HIS:CD2	1:B:259:GLY:H	2.11	0.66
1:C:225:ASN:N	1:C:226:PRO:HD3	2.10	0.66
1:B:328:LEU:HD23	1:B:376:LEU:HD22	1.78	0.66
1:D:225:ASN:N	1:D:226:PRO:HD3	2.11	0.65
1:D:184:VAL:HG22	1:D:223:PHE:HB2	1.78	0.65
1:A:17:LYS:O	1:A:21:GLN:HG3	1.96	0.65
1:B:320:VAL:HB	1:B:324:GLN:NE2	2.11	0.65
1:A:133:LEU:HD23	1:A:283:LYS:HE2	1.77	0.65
1:A:184:VAL:HG22	1:A:223:PHE:HB2	1.78	0.65
1:D:46:LYS:HD3	1:D:47:THR:HG23	1.79	0.65
1:B:225:ASN:N	1:B:226:PRO:HD3	2.12	0.65
1:C:17:LYS:O	1:C:21:GLN:HG3	1.96	0.65
1:B:279:ARG:HD3	1:B:368:GLU:OE1	1.96	0.64
1:B:362:ARG:HG3	1:B:365:PHE:CE2	2.31	0.64
1:C:279:ARG:HD3	1:C:368:GLU:OE1	1.97	0.64
1:A:320:VAL:HB	1:A:324:GLN:NE2	2.13	0.64
1:C:241:LEU:HD11	1:D:241:LEU:CD1	2.22	0.64
1:D:328:LEU:HD11	1:D:379:ALA:CB	2.26	0.64
1:D:337:PRO:HB2	1:D:338:TYR:HD1	1.61	0.64
1:A:354:THR:HG23	1:A:359:HIS:CE1	2.33	0.64

Continued on next page...

Continued from previous page...

Atom-1	Atom-2	Interatomic distance (Å)	Clash overlap (Å)
1:C:328:LEU:HD11	1:C:379:ALA:HB1	1.78	0.64
1:C:165:LYS:HE2	1:D:119:GLN:HG2	1.80	0.64
1:A:279:ARG:HD3	1:A:368:GLU:OE1	1.97	0.63
1:D:327:LEU:HA	1:D:330:ARG:HD3	1.80	0.63
1:D:18:ILE:O	1:D:22:ILE:HG13	1.99	0.63
1:B:298:VAL:HG12	1:B:310:ILE:HG12	1.80	0.63
1:B:337:PRO:HB2	1:B:338:TYR:CD1	2.33	0.63
1:C:265:LYS:HZ2	5:D:684:PPK:H3B	1.43	0.63
1:C:337:PRO:HB2	1:C:338:TYR:CD1	2.34	0.63
1:C:181:ASP:O	1:C:220:THR:HA	1.98	0.63
1:C:298:VAL:HG12	1:C:310:ILE:HG12	1.80	0.63
1:B:46:LYS:HD3	1:B:47:THR:HG23	1.80	0.63
1:A:337:PRO:HB2	1:A:338:TYR:CD1	2.33	0.62
1:A:111:PRO:HA	1:A:114:GLN:HG3	1.80	0.62
1:A:6:THR:HG23	1:A:169:THR:HG22	1.81	0.62
1:B:33:GLN:HE22	1:B:61:TRP:N	1.96	0.62
1:D:328:LEU:HD11	1:D:379:ALA:HB1	1.80	0.62
1:D:143:ARG:HB3	1:D:210:ILE:HD12	1.82	0.62
1:A:225:ASN:N	1:A:226:PRO:HD3	2.14	0.62
1:C:327:LEU:HA	1:C:330:ARG:HD3	1.81	0.62
1:D:69:ARG:HD3	1:D:86:ALA:O	1.98	0.62
1:C:151:VAL:CG2	1:C:156:THR:HB	2.28	0.62
1:D:17:LYS:O	1:D:21:GLN:HG3	1.99	0.62
1:A:257:HIS:CD2	1:A:259:GLY:H	2.14	0.62
1:B:354:THR:HG23	1:B:359:HIS:CE1	2.34	0.62
1:A:328:LEU:HD23	1:A:376:LEU:HD22	1.81	0.62
4:A:385:SAM:H4'	5:A:384:PPK:O4A	2.00	0.62
1:B:246:ILE:HG23	1:B:257:HIS:CE1	2.34	0.61
1:A:121:LEU:HD13	1:B:6:THR:O	2.00	0.61
1:A:238:ASP:OD2	4:A:385:SAM:H5'2	1.99	0.61
1:B:111:PRO:HA	1:B:114:GLN:HG3	1.80	0.61
1:B:18:ILE:O	1:B:22:ILE:HG13	2.01	0.61
5:A:384:PPK:H3B	1:B:265:LYS:NZ	1.98	0.61
1:B:347:LEU:N	1:B:347:LEU:HD22	2.16	0.61
1:B:327:LEU:HA	1:B:330:ARG:HD3	1.83	0.61
1:D:363:GLU:HA	1:D:368:GLU:HB3	1.83	0.61
1:A:327:LEU:HA	1:A:330:ARG:HD3	1.83	0.61
1:C:105:GLY:O	1:C:303:GLY:HA2	2.01	0.60
1:B:207:ILE:HG23	1:B:211:LEU:HD22	1.82	0.60
1:A:46:LYS:HD3	1:A:47:THR:HG23	1.82	0.60
1:A:321:PRO:HD2	1:A:324:GLN:NE2	2.17	0.60

Continued on next page...

Continued from previous page...

Atom-1	Atom-2	Interatomic distance (Å)	Clash overlap (Å)
1:D:193:ILE:HG12	1:D:194:ASP:N	2.16	0.60
1:C:38:ARG:N	1:C:38:ARG:HD2	2.16	0.60
1:C:265:LYS:NZ	5:D:684:PPK:N3B	2.49	0.60
1:A:105:GLY:O	1:A:303:GLY:HA2	2.01	0.60
1:C:324:GLN:O	1:C:328:LEU:HB2	2.02	0.59
1:C:207:ILE:HG23	1:C:211:LEU:HD22	1.82	0.59
1:A:143:ARG:HB3	1:A:210:ILE:HD12	1.83	0.59
1:A:193:ILE:HG12	1:A:194:ASP:N	2.17	0.59
1:B:105:GLY:O	1:B:303:GLY:HA2	2.01	0.59
1:B:38:ARG:HD2	1:B:38:ARG:N	2.16	0.59
1:C:253:GLY:O	1:D:256:ARG:HG2	2.02	0.59
1:A:272:ARG:HH21	1:A:354:THR:HG21	1.68	0.59
1:D:333:PHE:HZ	1:D:376:LEU:HD11	1.67	0.59
1:C:38:ARG:NH1	1:C:107:ASP:OD1	2.36	0.59
1:D:279:ARG:HD3	1:D:368:GLU:OE1	2.03	0.58
1:B:193:ILE:HG12	1:B:194:ASP:N	2.17	0.58
1:A:183:VAL:HG11	1:A:207:ILE:HD13	1.85	0.58
1:D:105:GLY:O	1:D:303:GLY:HA2	2.04	0.58
1:D:203:MET:O	1:D:208:LYS:HB2	2.03	0.58
1:B:267:PRO:HB2	1:B:341:ILE:CD1	2.31	0.58
1:B:324:GLN:O	1:B:328:LEU:HB2	2.03	0.58
1:D:38:ARG:N	1:D:38:ARG:HD2	2.18	0.58
1:D:347:LEU:H	1:D:347:LEU:HD22	1.69	0.58
1:C:246:ILE:HG22	1:C:247:ILE:N	2.18	0.58
1:C:362:ARG:HG3	1:C:365:PHE:CE2	2.39	0.58
1:C:183:VAL:HG11	1:C:207:ILE:HD13	1.86	0.58
1:D:135:PRO:O	1:D:139:THR:HG23	2.04	0.58
1:A:328:LEU:HD11	1:A:379:ALA:CB	2.34	0.58
1:B:203:MET:O	1:B:208:LYS:HB2	2.04	0.58
1:A:137:PRO:HA	1:A:170:PHE:CE1	2.39	0.58
1:C:256:ARG:HG2	1:D:253:GLY:O	2.04	0.57
1:D:111:PRO:HA	1:D:114:GLN:HG3	1.86	0.57
1:C:101:ASP:CG	1:D:229:ARG:HG2	2.25	0.57
1:D:9:SER:OG	1:D:142:HIS:ND1	2.37	0.57
1:A:324:GLN:O	1:A:328:LEU:HB2	2.04	0.57
1:D:181:ASP:O	1:D:220:THR:HA	2.04	0.57
1:A:127:THR:O	1:A:133:LEU:HA	2.04	0.57
1:B:238:ASP:OD2	4:B:485:SAM:H5'2	2.04	0.57
1:B:143:ARG:HB3	1:B:210:ILE:HD12	1.86	0.57
1:C:111:PRO:HA	1:C:114:GLN:HG3	1.87	0.57
1:B:159:TRP:CE2	1:B:193:ILE:HD12	2.40	0.56

Continued on next page...

Continued from previous page...

Atom-1	Atom-2	Interatomic distance (Å)	Clash overlap (Å)
1:B:181:ASP:O	1:B:220:THR:HA	2.04	0.56
1:C:347:LEU:HD22	1:C:347:LEU:H	1.70	0.56
1:B:328:LEU:HD11	1:B:379:ALA:CB	2.35	0.56
1:D:246:ILE:HG22	1:D:247:ILE:HG12	1.86	0.56
1:C:143:ARG:HB3	1:C:210:ILE:HD12	1.87	0.56
1:A:302:ILE:O	1:B:226:PRO:HB2	2.06	0.56
1:D:246:ILE:HG22	1:D:247:ILE:N	2.20	0.56
1:D:38:ARG:NH1	1:D:107:ASP:OD1	2.39	0.56
1:C:6:THR:HG23	1:C:169:THR:HG22	1.88	0.56
1:C:69:ARG:HD3	1:C:86:ALA:O	2.06	0.56
1:A:246:ILE:HG23	1:A:257:HIS:CE1	2.41	0.56
1:D:324:GLN:O	1:D:328:LEU:HB2	2.06	0.56
1:B:363:GLU:HA	1:B:368:GLU:HB3	1.88	0.56
1:A:328:LEU:HD11	1:A:379:ALA:HB1	1.87	0.56
1:A:363:GLU:HA	1:A:368:GLU:HB3	1.88	0.56
1:D:323:GLU:HG2	1:D:324:GLN:N	2.19	0.56
1:A:337:PRO:HB2	1:A:338:TYR:HD1	1.71	0.56
1:C:321:PRO:HD2	1:C:324:GLN:NE2	2.21	0.56
1:C:330:ARG:NH2	1:C:331:GLU:HG3	2.21	0.55
1:C:363:GLU:HA	1:C:368:GLU:HB3	1.89	0.55
1:C:203:MET:O	1:C:208:LYS:HB2	2.06	0.55
1:D:362:ARG:HG3	1:D:365:PHE:CE2	2.41	0.55
1:D:371:ASP:OD1	1:D:371:ASP:N	2.37	0.55
1:C:39:VAL:O	1:C:265:LYS:HA	2.06	0.55
1:A:39:VAL:O	1:A:265:LYS:HA	2.06	0.55
1:C:18:ILE:O	1:C:22:ILE:HG13	2.07	0.55
1:B:328:LEU:HD11	1:B:379:ALA:HB1	1.88	0.55
1:B:151:VAL:CG2	1:B:156:THR:HB	2.36	0.55
1:B:127:THR:O	1:B:133:LEU:HA	2.06	0.55
1:A:151:VAL:CG2	1:A:156:THR:HB	2.36	0.55
1:B:272:ARG:HH21	1:B:354:THR:HG21	1.72	0.55
1:B:46:LYS:HD3	1:B:47:THR:H	1.72	0.54
1:D:330:ARG:HH21	1:D:331:GLU:HG3	1.69	0.54
1:B:38:ARG:NH1	1:B:107:ASP:OD1	2.40	0.54
1:D:127:THR:O	1:D:133:LEU:HA	2.06	0.54
1:A:38:ARG:N	1:A:38:ARG:HD2	2.22	0.54
1:C:272:ARG:HH21	1:C:354:THR:HG21	1.72	0.54
1:A:135:PRO:O	1:A:139:THR:HG23	2.06	0.54
1:D:321:PRO:HD2	1:D:324:GLN:NE2	2.22	0.54
1:B:333:PHE:HZ	1:B:376:LEU:HD11	1.73	0.54
1:A:330:ARG:NH2	1:A:331:GLU:HG3	2.23	0.54

Continued on next page...

Continued from previous page...

Atom-1	Atom-2	Interatomic distance (Å)	Clash overlap (Å)
1:D:46:LYS:HD3	1:D:47:THR:H	1.71	0.54
1:A:203:MET:O	1:A:208:LYS:HB2	2.08	0.54
1:B:137:PRO:HA	1:B:170:PHE:CE1	2.43	0.54
1:A:347:LEU:N	1:A:347:LEU:HD22	2.23	0.54
1:B:340:LEU:HA	1:B:343:MET:HB3	1.89	0.54
1:B:337:PRO:HB2	1:B:338:TYR:HD1	1.73	0.54
1:C:151:VAL:HG23	1:C:156:THR:CB	2.33	0.54
1:C:46:LYS:HD3	1:C:47:THR:HG23	1.90	0.54
1:C:337:PRO:HB2	1:C:338:TYR:HD1	1.71	0.54
1:C:51:LEU:HD12	1:D:51:LEU:HD12	1.90	0.54
1:A:38:ARG:NH1	1:A:107:ASP:OD1	2.41	0.53
1:B:114:GLN:HB2	1:B:338:TYR:CD1	2.43	0.53
1:D:9:SER:HG	1:D:142:HIS:HD1	1.53	0.53
1:B:33:GLN:NE2	1:B:61:TRP:N	2.52	0.53
1:D:180:ILE:HG13	1:D:215:TRP:HB3	1.89	0.53
1:A:182:ALA:HB1	1:A:223:PHE:HE2	1.73	0.53
1:C:182:ALA:HB1	1:C:223:PHE:HE2	1.72	0.53
1:D:207:ILE:HG23	1:D:211:LEU:HD22	1.90	0.53
1:A:2:LYS:HG2	1:A:173:ASP:HB2	1.90	0.53
1:A:110:ASP:O	1:A:113:GLU:HG2	2.09	0.53
1:D:6:THR:HG23	1:D:169:THR:HG22	1.91	0.53
1:D:327:LEU:HA	1:D:330:ARG:CD	2.38	0.53
1:A:362:ARG:HG3	1:A:365:PHE:CE2	2.43	0.53
1:A:189:HIS:CE1	1:A:231:VAL:HG22	2.44	0.53
1:C:127:THR:O	1:C:133:LEU:HA	2.08	0.53
1:B:246:ILE:HG22	1:B:247:ILE:N	2.24	0.53
1:D:39:VAL:O	1:D:265:LYS:HA	2.08	0.53
1:B:330:ARG:NH2	1:B:331:GLU:HG3	2.23	0.53
1:A:340:LEU:HA	1:A:343:MET:HB3	1.91	0.53
1:D:338:TYR:CD1	1:D:338:TYR:N	2.76	0.53
1:B:39:VAL:O	1:B:265:LYS:HA	2.09	0.53
1:A:181:ASP:O	1:A:220:THR:HA	2.09	0.53
1:C:333:PHE:HZ	1:C:376:LEU:HD11	1.73	0.53
1:A:323:GLU:HG2	1:A:324:GLN:N	2.23	0.53
1:A:107:ASP:CA	1:A:114:GLN:HE21	2.16	0.52
1:A:61:TRP:CE3	1:C:61:TRP:CE3	2.97	0.52
1:B:159:TRP:CE3	1:B:193:ILE:HG21	2.44	0.52
1:B:301:ALA:O	1:B:304:VAL:HB	2.08	0.52
1:A:267:PRO:HB2	1:A:341:ILE:CD1	2.37	0.52
1:A:18:ILE:O	1:A:22:ILE:HG13	2.09	0.52
1:B:182:ALA:HB1	1:B:223:PHE:HE2	1.74	0.52

Continued on next page...

Continued from previous page...

Atom-1	Atom-2	Interatomic distance (Å)	Clash overlap (Å)
1:A:180:ILE:HG13	1:A:215:TRP:HB3	1.92	0.52
1:D:159:TRP:CE3	1:D:193:ILE:HG21	2.45	0.52
1:B:107:ASP:CA	1:B:114:GLN:HE21	2.17	0.52
1:C:135:PRO:O	1:C:139:THR:HG23	2.10	0.52
1:C:246:ILE:HG23	1:C:257:HIS:CE1	2.44	0.52
1:D:354:THR:HG23	1:D:359:HIS:CE1	2.43	0.52
1:C:371:ASP:OD1	1:C:371:ASP:N	2.41	0.52
1:D:327:LEU:HD12	1:D:330:ARG:HD2	1.92	0.52
1:D:272:ARG:HH21	1:D:354:THR:HG21	1.73	0.52
1:C:123:PHE:CE2	1:C:297:GLN:HB2	2.45	0.52
1:D:183:VAL:HG11	1:D:207:ILE:HD13	1.92	0.52
1:A:123:PHE:CD1	1:A:256:ARG:HB3	2.45	0.51
1:D:151:VAL:CG2	1:D:156:THR:HB	2.39	0.51
1:A:151:VAL:HG23	1:A:156:THR:CB	2.38	0.51
1:C:323:GLU:HG2	1:C:324:GLN:N	2.24	0.51
1:B:17:LYS:HD2	1:B:355:ALA:O	2.09	0.51
1:B:183:VAL:HG11	1:B:207:ILE:HD13	1.93	0.51
1:B:246:ILE:HG22	1:B:247:ILE:HG12	1.92	0.51
1:A:338:TYR:N	1:A:338:TYR:CD1	2.79	0.51
4:B:485:SAM:H4'	5:B:484:PPK:O4A	2.11	0.51
1:C:9:SER:OG	1:C:142:HIS:ND1	2.44	0.51
1:B:323:GLU:HG2	1:B:324:GLN:N	2.26	0.51
1:B:341:ILE:HG21	1:B:347:LEU:HD11	1.93	0.50
1:B:159:TRP:CZ2	1:B:193:ILE:HD12	2.46	0.50
1:C:123:PHE:CD1	1:C:256:ARG:HB3	2.46	0.50
1:B:327:LEU:HA	1:B:330:ARG:CD	2.40	0.50
1:A:120:GLY:O	1:A:299:SER:HA	2.11	0.50
1:C:229:ARG:HB3	1:D:104:GLN:NE2	2.26	0.50
1:C:87:ASN:H	1:C:87:ASN:ND2	2.09	0.50
1:C:136:ALA:HB3	1:C:137:PRO:HD3	1.92	0.50
1:A:298:VAL:HG12	1:A:310:ILE:HG12	1.92	0.50
1:D:327:LEU:CA	1:D:330:ARG:HD3	2.41	0.50
1:B:151:VAL:HG23	1:B:156:THR:CB	2.38	0.50
1:D:123:PHE:CD1	1:D:256:ARG:HB3	2.46	0.50
1:C:318:GLU:O	1:C:319:LYS:HD3	2.11	0.50
1:A:107:ASP:OD2	1:A:114:GLN:NE2	2.45	0.50
1:B:338:TYR:CD1	1:B:338:TYR:N	2.79	0.50
1:A:17:LYS:O	1:A:21:GLN:CG	2.59	0.50
1:C:338:TYR:CD1	1:C:338:TYR:N	2.80	0.50
1:B:327:LEU:CA	1:B:330:ARG:HD3	2.42	0.50
1:C:328:LEU:CD2	1:C:376:LEU:HD22	2.41	0.50

Continued on next page...

Continued from previous page...

Atom-1	Atom-2	Interatomic distance (Å)	Clash overlap (Å)
1:C:40:ALA:HB3	1:C:55:GLU:HG2	1.92	0.50
1:C:107:ASP:CA	1:C:114:GLN:HE21	2.17	0.50
1:C:114:GLN:HB2	1:C:338:TYR:CD1	2.47	0.50
1:D:87:ASN:H	1:D:87:ASN:ND2	2.09	0.50
1:B:72:VAL:CG1	1:B:86:ALA:HB2	2.32	0.50
1:C:33:GLN:HE22	1:C:61:TRP:N	2.06	0.50
1:A:246:ILE:HG22	1:A:247:ILE:N	2.27	0.50
1:C:131:ASP:O	1:C:133:LEU:HD22	2.11	0.50
1:A:241:LEU:HG	1:B:241:LEU:HG	1.94	0.49
1:A:122:MET:CE	1:A:271:ASP:HA	2.42	0.49
1:A:108:ARG:HH11	1:A:108:ARG:HG2	1.77	0.49
1:B:114:GLN:HB3	1:B:338:TYR:CE1	2.47	0.49
1:B:326:THR:O	1:B:330:ARG:HD3	2.13	0.49
1:B:123:PHE:CD1	1:B:256:ARG:HB3	2.47	0.49
1:A:327:LEU:HA	1:A:330:ARG:CD	2.42	0.49
1:A:333:PHE:HZ	1:A:376:LEU:HD11	1.77	0.49
1:B:189:HIS:CE1	1:B:231:VAL:HG22	2.48	0.49
1:A:226:PRO:HB2	1:B:302:ILE:O	2.13	0.49
1:D:107:ASP:CA	1:D:114:GLN:HE21	2.19	0.49
1:D:137:PRO:HA	1:D:170:PHE:CE1	2.47	0.49
1:A:119:GLN:HG2	1:B:165:LYS:HE2	1.94	0.49
1:D:132:VAL:HG23	1:D:134:MET:HB2	1.95	0.49
1:B:87:ASN:H	1:B:87:ASN:ND2	2.09	0.49
1:B:210:ILE:HG22	1:B:211:LEU:HD13	1.93	0.49
1:C:125:TYR:CG	1:C:255:ALA:HB2	2.48	0.49
1:A:371:ASP:N	1:A:371:ASP:OD1	2.43	0.49
1:D:189:HIS:CE1	1:D:231:VAL:HG22	2.47	0.49
1:D:159:TRP:CE2	1:D:193:ILE:HD12	2.48	0.49
1:B:87:ASN:H	1:B:87:ASN:HD22	1.61	0.49
1:A:246:ILE:HG22	1:A:247:ILE:HG12	1.95	0.49
1:B:212:PRO:HG2	1:B:215:TRP:CZ3	2.48	0.49
1:C:122:MET:N	1:C:122:MET:SD	2.85	0.49
1:B:17:LYS:O	1:B:21:GLN:CG	2.60	0.49
1:A:265:LYS:HZ2	5:B:484:PPK:H3B	1.57	0.49
1:C:314:THR:O	1:C:317:THR:HG23	2.13	0.49
1:A:265:LYS:NZ	5:B:484:PPK:N3B	2.59	0.48
1:C:2:LYS:HG2	1:C:173:ASP:HB2	1.94	0.48
1:C:132:VAL:HG23	1:C:134:MET:HB2	1.95	0.48
1:D:122:MET:SD	1:D:122:MET:N	2.86	0.48
1:D:225:ASN:N	1:D:226:PRO:CD	2.75	0.48
1:A:226:PRO:C	1:A:228:GLY:N	2.65	0.48

Continued on next page...

Continued from previous page...

Atom-1	Atom-2	Interatomic distance (Å)	Clash overlap (Å)
1:A:380:ALA:O	1:A:381:GLY:C	2.51	0.48
1:A:125:TYR:HD1	1:A:295:GLU:HG3	1.78	0.48
1:A:207:ILE:HG23	1:A:211:LEU:HD22	1.95	0.48
1:A:125:TYR:CD1	1:A:295:GLU:HG3	2.48	0.48
1:D:205:GLU:O	1:D:209:PRO:HG2	2.13	0.48
1:A:327:LEU:CA	1:A:330:ARG:HD3	2.44	0.48
1:C:180:ILE:HG13	1:C:215:TRP:HB3	1.94	0.48
1:B:371:ASP:OD1	1:B:371:ASP:N	2.45	0.48
1:C:267:PRO:HB2	1:C:341:ILE:CD1	2.37	0.48
1:C:328:LEU:HD11	1:C:379:ALA:HB3	1.94	0.48
1:A:159:TRP:CE2	1:A:193:ILE:HD12	2.49	0.48
1:A:136:ALA:HB3	1:A:137:PRO:HD3	1.95	0.48
1:C:340:LEU:HA	1:C:343:MET:HB3	1.94	0.48
1:B:298:VAL:HA	1:B:309:SER:O	2.14	0.48
1:B:327:LEU:O	1:B:330:ARG:NE	2.46	0.48
1:C:354:THR:HG23	1:C:359:HIS:CE1	2.48	0.48
1:D:131:ASP:O	1:D:133:LEU:HD22	2.14	0.48
1:A:108:ARG:H	1:A:114:GLN:HG2	1.77	0.48
1:B:136:ALA:HB3	1:B:137:PRO:HD3	1.96	0.48
1:A:159:TRP:CE3	1:A:193:ILE:HG21	2.49	0.48
1:A:66:GLU:HA	1:A:66:GLU:OE1	2.14	0.48
1:B:79:HIS:HD2	1:B:81:ASP:N	1.99	0.48
1:C:120:GLY:O	1:C:299:SER:HA	2.13	0.48
1:D:47:THR:HG22	1:D:236:MET:HA	1.95	0.48
1:C:189:HIS:CE1	1:C:231:VAL:HG22	2.49	0.48
1:D:79:HIS:HD2	1:D:81:ASP:N	2.05	0.47
1:D:340:LEU:HA	1:D:343:MET:HB3	1.94	0.47
1:D:173:ASP:HB3	1:D:178:VAL:HG11	1.95	0.47
1:C:327:LEU:CA	1:C:330:ARG:HD3	2.44	0.47
1:D:17:LYS:HD2	1:D:355:ALA:O	2.14	0.47
1:B:335:LEU:HA	1:B:340:LEU:HD23	1.96	0.47
1:C:37:ALA:C	1:C:38:ARG:HD2	2.33	0.47
1:A:327:LEU:HD12	1:A:330:ARG:HD2	1.95	0.47
1:A:114:GLN:HB2	1:A:338:TYR:CD1	2.49	0.47
1:B:9:SER:OG	1:B:142:HIS:ND1	2.47	0.47
1:D:114:GLN:HB2	1:D:338:TYR:CD1	2.49	0.47
1:A:318:GLU:O	1:A:319:LYS:HD3	2.14	0.47
1:C:327:LEU:HD12	1:C:330:ARG:HD2	1.97	0.47
1:A:131:ASP:O	1:A:133:LEU:HD22	2.15	0.47
1:C:229:ARG:HG2	1:D:101:ASP:CG	2.34	0.47
1:C:87:ASN:HD22	1:C:87:ASN:H	1.62	0.47

Continued on next page...

Continued from previous page...

Atom-1	Atom-2	Interatomic distance (Å)	Clash overlap (Å)
1:C:325:LEU:O	1:C:329:VAL:HG23	2.15	0.47
1:C:114:GLN:HB3	1:C:338:TYR:CE1	2.49	0.47
1:B:330:ARG:NE	1:B:331:GLU:N	2.58	0.47
1:C:330:ARG:HH21	1:C:331:GLU:HG3	1.79	0.47
1:B:225:ASN:N	1:B:226:PRO:CD	2.77	0.47
1:A:225:ASN:N	1:A:226:PRO:CD	2.77	0.47
1:A:46:LYS:HD3	1:A:47:THR:H	1.80	0.47
1:C:47:THR:HG22	1:C:236:MET:HA	1.95	0.47
1:A:123:PHE:CE2	1:A:297:GLN:HB2	2.49	0.47
1:A:114:GLN:HB3	1:A:338:TYR:CE1	2.50	0.47
1:C:121:LEU:HA	1:C:299:SER:HA	1.97	0.47
1:D:330:ARG:NE	1:D:331:GLU:N	2.58	0.47
1:C:225:ASN:N	1:C:226:PRO:CD	2.77	0.47
1:D:246:ILE:CG2	1:D:247:ILE:N	2.78	0.46
1:D:335:LEU:HA	1:D:340:LEU:HD23	1.96	0.46
1:A:40:ALA:HB3	1:A:55:GLU:HG2	1.97	0.46
1:B:110:ASP:O	1:B:113:GLU:HG2	2.15	0.46
1:B:325:LEU:O	1:B:329:VAL:HG23	2.14	0.46
1:C:327:LEU:HA	1:C:330:ARG:CD	2.43	0.46
1:D:108:ARG:H	1:D:114:GLN:HG2	1.81	0.46
1:C:330:ARG:NE	1:C:331:GLU:N	2.59	0.46
1:D:279:ARG:HD2	1:D:360:PHE:CG	2.51	0.46
1:C:137:PRO:HA	1:C:170:PHE:CE1	2.50	0.46
1:B:327:LEU:HD12	1:B:330:ARG:HD2	1.96	0.46
1:B:17:LYS:HA	1:B:17:LYS:HD3	1.57	0.46
1:C:382:LEU:O	1:C:383:LYS:OXT	2.33	0.46
1:D:210:ILE:HG22	1:D:211:LEU:HD13	1.97	0.46
1:C:321:PRO:O	1:C:322:SER:C	2.54	0.46
1:A:173:ASP:HB3	1:A:178:VAL:HG11	1.96	0.46
1:C:110:ASP:O	1:C:113:GLU:HG2	2.15	0.46
1:C:122:MET:CE	1:C:271:ASP:HA	2.46	0.46
1:D:120:GLY:O	1:D:299:SER:HA	2.15	0.46
1:A:17:LYS:HD2	1:A:355:ALA:O	2.15	0.46
1:D:327:LEU:O	1:D:330:ARG:NE	2.48	0.46
1:A:193:ILE:HD13	1:A:198:LEU:HB2	1.98	0.46
1:C:108:ARG:H	1:C:114:GLN:HG2	1.81	0.46
1:A:6:THR:O	1:B:121:LEU:HD13	2.16	0.46
1:C:229:ARG:CZ	1:C:231:VAL:HG21	2.46	0.46
1:A:327:LEU:O	1:A:331:GLU:HB2	2.16	0.46
1:D:136:ALA:O	1:D:139:THR:OG1	2.28	0.46
1:B:261:ALA:O	1:B:265:LYS:HE3	2.16	0.46

Continued on next page...

Continued from previous page...

Atom-1	Atom-2	Interatomic distance (Å)	Clash overlap (Å)
1:A:152:ARG:NH1	1:A:162:PRO:HA	2.31	0.46
1:B:169:THR:O	1:B:180:ILE:HG23	2.15	0.46
1:C:293:ARG:HG3	1:C:293:ARG:O	2.15	0.46
1:A:301:ALA:O	1:A:304:VAL:HB	2.16	0.46
1:C:335:LEU:HA	1:C:340:LEU:HD23	1.98	0.45
1:A:335:LEU:HA	1:A:340:LEU:HD23	1.98	0.45
1:B:85:ASP:OD1	1:B:87:ASN:ND2	2.38	0.45
1:B:341:ILE:HG22	1:B:347:LEU:CD2	2.46	0.45
1:A:101:ASP:CG	1:B:229:ARG:HG2	2.37	0.45
1:B:65:GLU:OE1	1:B:69:ARG:NE	2.42	0.45
1:B:2:LYS:HG2	1:B:173:ASP:HB2	1.99	0.45
1:D:325:LEU:O	1:D:329:VAL:HG23	2.16	0.45
1:C:66:GLU:HA	1:C:66:GLU:OE1	2.16	0.45
1:D:326:THR:O	1:D:330:ARG:HD3	2.17	0.45
1:B:378:ASP:OD2	1:B:382:LEU:HD13	2.16	0.45
1:C:159:TRP:CE3	1:C:193:ILE:HG21	2.52	0.45
1:B:122:MET:CE	1:B:271:ASP:HA	2.46	0.45
1:B:107:ASP:OD2	1:B:114:GLN:NE2	2.50	0.45
1:A:330:ARG:C	1:A:330:ARG:NE	2.70	0.45
1:D:327:LEU:HA	1:D:327:LEU:HD12	1.79	0.45
1:D:330:ARG:C	1:D:330:ARG:NE	2.70	0.45
1:A:9:SER:OG	1:A:142:HIS:ND1	2.48	0.45
1:C:173:ASP:HB3	1:C:178:VAL:HG11	1.98	0.45
1:C:343:MET:HG2	1:C:344:LEU:HG	1.98	0.45
1:C:382:LEU:O	1:C:383:LYS:C	2.54	0.45
1:C:12:GLU:OE2	1:C:153:LYS:NZ	2.49	0.45
1:B:351:TYR:O	1:B:352:LYS:C	2.54	0.45
1:C:176:LYS:HA	1:C:176:LYS:HD2	1.63	0.45
1:A:122:MET:HG2	1:A:298:VAL:CG2	2.36	0.45
1:C:246:ILE:HG22	1:C:247:ILE:HG12	1.98	0.45
1:D:328:LEU:HD11	1:D:379:ALA:HB3	1.96	0.45
1:D:123:PHE:CE2	1:D:297:GLN:HB2	2.52	0.45
1:D:2:LYS:HG2	1:D:173:ASP:HB2	1.98	0.45
1:D:280:TYR:O	1:D:284:ASN:HB2	2.17	0.45
1:D:40:ALA:HB3	1:D:55:GLU:HG2	1.98	0.45
1:C:120:GLY:N	1:D:167:GLN:OE1	2.50	0.45
1:B:321:PRO:HD2	1:B:324:GLN:NE2	2.32	0.45
1:C:279:ARG:HD2	1:C:360:PHE:CG	2.52	0.45
1:D:341:ILE:HG22	1:D:347:LEU:HD21	1.97	0.44
1:B:341:ILE:HG22	1:B:347:LEU:HD21	1.98	0.44
1:D:65:GLU:HA	1:D:91:VAL:HG11	1.99	0.44

Continued on next page...

Continued from previous page...

Atom-1	Atom-2	Interatomic distance (Å)	Clash overlap (Å)
1:A:330:ARG:NE	1:A:331:GLU:N	2.58	0.44
1:C:226:PRO:C	1:C:228:GLY:N	2.69	0.44
1:D:31:LEU:HD22	1:D:35:PRO:HA	2.00	0.44
1:D:285:ILE:HG23	1:D:290:LEU:HB2	1.98	0.44
1:D:323:GLU:CG	1:D:324:GLN:N	2.81	0.44
1:B:328:LEU:CD2	1:B:376:LEU:HD22	2.47	0.44
1:A:140:TYR:CE2	1:A:215:TRP:HZ3	2.35	0.44
1:D:87:ASN:H	1:D:87:ASN:HD22	1.65	0.44
1:B:176:LYS:HD2	1:B:176:LYS:HA	1.62	0.44
1:D:176:LYS:HD2	1:D:176:LYS:HA	1.62	0.44
1:C:321:PRO:HD2	1:C:324:GLN:HE21	1.81	0.44
1:B:140:TYR:CE2	1:B:215:TRP:HZ3	2.34	0.44
1:D:362:ARG:HG2	1:D:362:ARG:H	1.66	0.44
1:A:37:ALA:C	1:A:38:ARG:HD2	2.38	0.44
1:C:330:ARG:NE	1:C:330:ARG:C	2.71	0.44
1:C:246:ILE:CG2	1:C:247:ILE:N	2.77	0.44
1:B:382:LEU:O	1:B:383:LYS:C	2.56	0.44
1:D:151:VAL:HG23	1:D:156:THR:CB	2.43	0.44
1:B:279:ARG:HD2	1:B:360:PHE:CG	2.52	0.44
1:C:362:ARG:HG2	1:C:362:ARG:H	1.67	0.44
1:A:176:LYS:HD2	1:A:176:LYS:HA	1.61	0.44
1:A:369:LYS:HA	1:A:369:LYS:CE	2.45	0.44
1:A:325:LEU:O	1:A:329:VAL:HG23	2.16	0.44
1:D:37:ALA:C	1:D:38:ARG:HD2	2.37	0.44
1:B:37:ALA:C	1:B:38:ARG:HD2	2.38	0.44
1:B:136:ALA:O	1:B:139:THR:OG1	2.27	0.44
1:C:159:TRP:CE2	1:C:193:ILE:HD12	2.53	0.44
1:B:31:LEU:HD22	1:B:35:PRO:HA	1.98	0.44
1:A:61:TRP:HE3	1:C:61:TRP:CE3	2.34	0.44
1:A:330:ARG:HE	1:A:330:ARG:C	2.21	0.43
1:C:326:THR:O	1:C:330:ARG:HD3	2.18	0.43
1:C:17:LYS:O	1:C:21:GLN:CG	2.66	0.43
1:B:180:ILE:HG13	1:B:215:TRP:HB3	2.00	0.43
1:C:38:ARG:HA	1:C:266:ASP:OD2	2.19	0.43
1:C:85:ASP:OD1	1:C:87:ASN:ND2	2.34	0.43
1:B:173:ASP:HB3	1:B:178:VAL:HG11	2.00	0.43
1:D:107:ASP:OD2	1:D:114:GLN:NE2	2.50	0.43
1:B:226:PRO:C	1:B:228:GLY:N	2.69	0.43
1:B:65:GLU:HA	1:B:91:VAL:HG11	1.99	0.43
1:D:69:ARG:NH1	1:D:89:CYS:O	2.43	0.43
1:A:226:PRO:C	1:A:228:GLY:H	2.20	0.43

Continued on next page...

Continued from previous page...

Atom-1	Atom-2	Interatomic distance (Å)	Clash overlap (Å)
1:B:66:GLU:HA	1:B:66:GLU:OE1	2.18	0.43
1:C:380:ALA:O	1:C:381:GLY:C	2.56	0.43
1:A:125:TYR:CG	1:A:255:ALA:HB2	2.54	0.43
1:C:33:GLN:NE2	1:C:61:TRP:N	2.62	0.43
1:B:121:LEU:HA	1:B:299:SER:HA	1.99	0.43
1:B:31:LEU:HA	1:B:34:ASP:O	2.19	0.43
1:B:14:HIS:CE1	1:B:16:ASP:HB2	2.54	0.43
1:B:380:ALA:O	1:B:381:GLY:C	2.56	0.43
1:A:87:ASN:H	1:A:87:ASN:ND2	2.15	0.43
1:A:122:MET:HE2	1:A:270:VAL:O	2.18	0.43
1:D:122:MET:CE	1:D:271:ASP:HA	2.49	0.43
1:D:182:ALA:HB1	1:D:223:PHE:HE2	1.81	0.43
1:B:330:ARG:HH21	1:B:331:GLU:HG3	1.82	0.43
1:A:121:LEU:HA	1:A:299:SER:HA	1.99	0.43
1:A:169:THR:O	1:A:180:ILE:HG23	2.18	0.43
1:A:298:VAL:HA	1:A:309:SER:O	2.19	0.43
1:A:382:LEU:O	1:A:383:LYS:OXT	2.36	0.43
1:B:108:ARG:HH11	1:B:108:ARG:HG2	1.84	0.43
1:C:369:LYS:HA	1:C:369:LYS:CE	2.47	0.43
1:A:147:ARG:O	1:A:151:VAL:HG12	2.18	0.43
1:D:347:LEU:N	1:D:347:LEU:HD22	2.32	0.42
1:B:40:ALA:HB3	1:B:55:GLU:HG2	2.01	0.42
1:C:65:GLU:HA	1:C:91:VAL:HG11	2.01	0.42
1:C:119:GLN:HG2	1:D:165:LYS:HE2	1.99	0.42
1:A:38:ARG:HA	1:A:266:ASP:OD2	2.19	0.42
1:A:79:HIS:HD2	1:A:81:ASP:N	2.06	0.42
1:D:226:PRO:C	1:D:228:GLY:N	2.71	0.42
1:B:49:MET:SD	1:C:92:LEU:HD21	2.59	0.42
1:B:347:LEU:H	1:B:347:LEU:CD2	2.24	0.42
1:D:72:VAL:O	1:D:75:ILE:HB	2.20	0.42
1:A:302:ILE:HG23	1:A:302:ILE:O	2.19	0.42
1:A:55:GLU:HA	1:A:96:GLY:O	2.20	0.42
1:C:245:LYS:HA	6:C:731:HOH:O	2.18	0.42
1:D:341:ILE:HG21	1:D:347:LEU:HD11	2.02	0.42
1:C:210:ILE:HG22	1:C:211:LEU:HD13	2.01	0.42
1:B:318:GLU:O	1:B:319:LYS:HD3	2.19	0.42
1:D:314:THR:O	1:D:317:THR:HG23	2.20	0.42
1:B:122:MET:CG	1:B:298:VAL:HG23	2.32	0.42
1:D:17:LYS:HA	1:D:17:LYS:HD3	1.63	0.42
1:C:46:LYS:HE2	1:C:235:PRO:O	2.20	0.42
1:C:221:LYS:NZ	1:C:221:LYS:HB3	2.34	0.42

Continued on next page...

Continued from previous page...

Atom-1	Atom-2	Interatomic distance (Å)	Clash overlap (Å)
1:D:65:GLU:O	1:D:69:ARG:HG3	2.20	0.42
1:A:110:ASP:HA	1:A:111:PRO:HD3	1.90	0.42
1:A:382:LEU:O	1:A:383:LYS:C	2.58	0.42
4:C:585:SAM:C2	1:D:302:ILE:HD13	2.50	0.42
1:C:204:GLU:OE2	1:C:208:LYS:HE2	2.20	0.42
1:A:9:SER:HG	1:A:142:HIS:HD1	1.66	0.42
1:C:330:ARG:CZ	1:C:330:ARG:HB2	2.49	0.42
1:C:8:GLU:HG2	1:D:121:LEU:CD2	2.50	0.42
1:D:382:LEU:O	1:D:383:LYS:C	2.57	0.42
1:D:321:PRO:HD2	1:D:324:GLN:HE21	1.84	0.42
1:A:159:TRP:CZ2	1:A:193:ILE:HD12	2.55	0.42
1:A:165:LYS:HE2	1:B:119:GLN:HG2	2.01	0.42
1:A:65:GLU:OE1	1:A:69:ARG:NE	2.45	0.42
1:A:279:ARG:HD2	1:A:360:PHE:CG	2.54	0.42
1:B:46:LYS:HE2	1:B:235:PRO:O	2.19	0.42
1:B:123:PHE:CE2	1:B:297:GLN:HB2	2.55	0.42
1:B:122:MET:SD	1:B:122:MET:N	2.93	0.42
1:C:337:PRO:O	1:C:340:LEU:HD12	2.19	0.42
1:B:267:PRO:C	1:B:269:LYS:H	2.23	0.42
1:C:121:LEU:C	1:C:122:MET:SD	2.98	0.42
1:D:169:THR:O	1:D:180:ILE:HG23	2.20	0.42
1:C:167:GLN:OE1	1:D:120:GLY:N	2.53	0.42
1:C:336:ARG:O	1:C:337:PRO:C	2.57	0.41
1:A:327:LEU:HA	1:A:327:LEU:HD12	1.79	0.41
1:C:17:LYS:HD3	1:C:17:LYS:HA	1.63	0.41
1:B:133:LEU:HD22	1:B:133:LEU:N	2.34	0.41
1:C:281:VAL:HB	1:C:333:PHE:CE2	2.55	0.41
1:B:323:GLU:CG	1:B:324:GLN:N	2.83	0.41
1:A:47:THR:HG22	1:A:236:MET:HA	2.02	0.41
1:A:256:ARG:HG2	1:B:253:GLY:O	2.20	0.41
1:C:125:TYR:CD1	1:C:295:GLU:HG3	2.55	0.41
1:B:205:GLU:O	1:B:209:PRO:HG2	2.20	0.41
1:C:108:ARG:HG2	1:C:108:ARG:HH11	1.85	0.41
1:D:17:LYS:O	1:D:21:GLN:CG	2.68	0.41
1:B:120:GLY:O	1:B:299:SER:HA	2.20	0.41
1:A:46:LYS:O	1:A:84:PHE:HE1	2.03	0.41
1:A:229:ARG:HG2	1:B:101:ASP:CG	2.41	0.41
1:A:108:ARG:NH1	1:A:108:ARG:HG2	2.34	0.41
1:D:341:ILE:HG22	1:D:347:LEU:CD2	2.50	0.41
1:C:140:TYR:CE2	1:C:215:TRP:HZ3	2.38	0.41
1:C:208:LYS:N	1:C:209:PRO:CD	2.83	0.41

Continued on next page...

Continued from previous page...

Atom-1	Atom-2	Interatomic distance (Å)	Clash overlap (Å)
1:A:52:VAL:O	1:A:93:SER:HA	2.20	0.41
1:C:341:ILE:HG22	1:C:347:LEU:HD21	2.01	0.41
1:D:140:TYR:CE2	1:D:215:TRP:HZ3	2.38	0.41
1:B:330:ARG:C	1:B:330:ARG:NE	2.74	0.41
1:A:226:PRO:O	1:A:228:GLY:N	2.52	0.41
1:B:122:MET:HG3	1:B:274:ALA:CB	2.51	0.41
1:C:122:MET:HE2	1:C:270:VAL:O	2.21	0.41
1:C:323:GLU:CG	1:C:324:GLN:N	2.83	0.41
1:D:46:LYS:HE2	1:D:235:PRO:O	2.21	0.41
1:B:362:ARG:HG2	1:B:362:ARG:H	1.72	0.41
1:A:323:GLU:CG	1:A:324:GLN:N	2.83	0.41
5:A:384:PPK:H3B	1:B:265:LYS:HZ1	1.68	0.41
1:D:77:TYR:OH	1:D:163:ASP:HB2	2.21	0.41
1:C:327:LEU:HA	1:C:327:LEU:HD12	1.85	0.41
1:D:333:PHE:CZ	1:D:376:LEU:HD11	2.51	0.41
1:A:101:ASP:OD1	1:B:229:ARG:HG2	2.20	0.41
1:B:79:HIS:NE2	1:C:79:HIS:NE2	2.68	0.41
1:D:320:VAL:O	1:D:321:PRO:C	2.57	0.41
1:B:47:THR:HG22	1:B:236:MET:HA	2.03	0.41
1:C:101:ASP:HB3	1:D:229:ARG:O	2.21	0.41
1:B:104:GLN:H	1:B:104:GLN:HG2	1.73	0.41
1:A:321:PRO:HD2	1:A:324:GLN:HE21	1.81	0.41
1:A:328:LEU:HD11	1:A:379:ALA:HB3	2.02	0.41
1:C:335:LEU:HA	1:C:335:LEU:HD12	1.90	0.41
1:D:37:ALA:HB1	1:D:58:THR:HB	2.02	0.41
1:B:114:GLN:O	1:B:337:PRO:HG2	2.21	0.41
1:A:326:THR:O	1:A:330:ARG:HD3	2.21	0.41
1:A:330:ARG:HH21	1:A:331:GLU:HG3	1.86	0.41
1:A:72:VAL:CG1	1:A:86:ALA:HB2	2.41	0.41
1:B:327:LEU:HA	1:B:327:LEU:HD12	1.80	0.41
1:D:330:ARG:C	1:D:330:ARG:HE	2.24	0.41
1:D:121:LEU:HA	1:D:299:SER:HA	2.03	0.41
1:C:333:PHE:CZ	1:C:376:LEU:HD11	2.54	0.41
1:A:320:VAL:O	1:A:321:PRO:C	2.58	0.41
1:C:101:ASP:HB2	6:D:916:HOH:O	2.20	0.41
1:D:171:GLN:NE2	1:D:181:ASP:OD2	2.54	0.41
1:A:362:ARG:H	1:A:362:ARG:HG2	1.67	0.41
1:A:85:ASP:OD1	1:A:87:ASN:ND2	2.37	0.41
1:B:125:TYR:CG	1:B:255:ALA:HB2	2.56	0.41
1:B:267:PRO:C	1:B:269:LYS:N	2.73	0.41
1:A:336:ARG:O	1:A:337:PRO:C	2.59	0.41

Continued on next page...

Continued from previous page...

Atom-1	Atom-2	Interatomic distance (Å)	Clash overlap (Å)
1:A:61:TRP:CE3	1:C:61:TRP:HE3	2.39	0.41
1:C:261:ALA:O	1:C:265:LYS:HE3	2.21	0.41
5:A:384:PPK:N3B	1:B:265:LYS:NZ	2.66	0.41
1:D:380:ALA:O	1:D:381:GLY:C	2.58	0.41
1:B:61:TRP:CE3	1:D:61:TRP:CE3	3.09	0.40
1:C:17:LYS:HD2	1:C:355:ALA:O	2.21	0.40
1:D:328:LEU:CD2	1:D:376:LEU:HD22	2.45	0.40
1:B:333:PHE:CZ	1:B:376:LEU:HD11	2.53	0.40
1:A:186:SER:HA	1:A:225:ASN:OD1	2.21	0.40
1:D:9:SER:HG	1:D:142:HIS:CE1	2.38	0.40
1:B:55:GLU:HA	1:B:96:GLY:O	2.22	0.40
1:B:286:VAL:HG22	1:B:291:ALA:O	2.21	0.40
1:D:267:PRO:C	1:D:269:LYS:H	2.24	0.40
1:D:330:ARG:HB2	1:D:330:ARG:CZ	2.51	0.40
1:C:169:THR:O	1:C:180:ILE:HG23	2.21	0.40
1:C:382:LEU:HG	1:C:383:LYS:H	1.81	0.40
1:B:131:ASP:O	1:B:133:LEU:HD22	2.21	0.40
1:D:283:LYS:NZ	1:D:368:GLU:O	2.47	0.40
1:C:46:LYS:HD3	1:C:47:THR:H	1.85	0.40
1:C:238:ASP:OD2	4:C:585:SAM:H5'2	2.22	0.40
1:C:296:ILE:CG2	1:C:297:GLN:N	2.84	0.40
1:C:101:ASP:OD1	1:D:229:ARG:HG2	2.20	0.40
1:A:229:ARG:HG2	1:B:101:ASP:OD1	2.21	0.40
1:C:112:LEU:N	1:C:112:LEU:HD13	2.36	0.40
1:A:122:MET:CG	1:A:298:VAL:HG23	2.36	0.40
1:A:210:ILE:HG22	1:A:211:LEU:HD13	2.03	0.40
1:C:125:TYR:HB3	1:C:251:TYR:CE1	2.57	0.40
1:C:2:LYS:HA	1:C:172:TYR:O	2.22	0.40
1:D:66:GLU:OE1	1:D:66:GLU:HA	2.22	0.40
1:D:301:ALA:O	1:D:304:VAL:HB	2.22	0.40

There are no symmetry-related clashes.

5.3 Torsion angles [i](#)

5.3.1 Protein backbone [i](#)

In the following table, the Percentiles column shows the percent Ramachandran outliers of the chain as a percentile score with respect to all X-ray entries followed by that with respect to entries of similar resolution.

The Analysed column shows the number of residues for which the backbone conformation was analysed, and the total number of residues.

Mol	Chain	Analysed	Favoured	Allowed	Outliers	Percentiles	
1	A	381/383 (100%)	355 (93%)	23 (6%)	3 (1%)	24	41
1	B	381/383 (100%)	355 (93%)	23 (6%)	3 (1%)	24	41
1	C	381/383 (100%)	351 (92%)	27 (7%)	3 (1%)	24	41
1	D	381/383 (100%)	348 (91%)	30 (8%)	3 (1%)	24	41
All	All	1524/1532 (100%)	1409 (92%)	103 (7%)	12 (1%)	24	41

All (12) Ramachandran outliers are listed below:

Mol	Chain	Res	Type
1	A	47	THR
1	B	47	THR
1	C	47	THR
1	D	47	THR
1	A	382	LEU
1	B	382	LEU
1	C	382	LEU
1	D	382	LEU
1	A	381	GLY
1	B	381	GLY
1	C	381	GLY
1	D	381	GLY

5.3.2 Protein sidechains ⓘ

In the following table, the Percentiles column shows the percent sidechain outliers of the chain as a percentile score with respect to all X-ray entries followed by that with respect to entries of similar resolution.

The Analysed column shows the number of residues for which the sidechain conformation was analysed, and the total number of residues.

Mol	Chain	Analysed	Rotameric	Outliers	Percentiles	
1	A	311/311 (100%)	246 (79%)	65 (21%)	1	2
1	B	311/311 (100%)	244 (78%)	67 (22%)	1	2
1	C	311/311 (100%)	242 (78%)	69 (22%)	1	2
1	D	311/311 (100%)	243 (78%)	68 (22%)	1	2
All	All	1244/1244 (100%)	975 (78%)	269 (22%)	1	2

All (269) residues with a non-rotameric sidechain are listed below:

Mol	Chain	Res	Type
1	A	9	SER
1	A	17	LYS
1	A	32	GLU
1	A	36	LYS
1	A	38	ARG
1	A	46	LYS
1	A	51	LEU
1	A	55	GLU
1	A	65	GLU
1	A	66	GLU
1	A	74	GLU
1	A	82	MET
1	A	87	ASN
1	A	92	LEU
1	A	99	SER
1	A	112	LEU
1	A	122	MET
1	A	150	GLU
1	A	161	ARG
1	A	169	THR
1	A	181	ASP
1	A	185	LEU
1	A	193	ILE
1	A	203	MET
1	A	205	GLU
1	A	208	LYS
1	A	211	LEU
1	A	214	GLU
1	A	218	SER
1	A	221	LYS
1	A	241	LEU
1	A	245	LYS
1	A	246	ILE
1	A	256	ARG
1	A	265	LYS
1	A	269	LYS
1	A	270	VAL
1	A	279	ARG
1	A	294	CYS
1	A	309	SER
1	A	311	MET
1	A	312	VAL

Continued on next page...

Continued from previous page...

Mol	Chain	Res	Type
1	A	317	THR
1	A	322	SER
1	A	323	GLU
1	A	326	THR
1	A	327	LEU
1	A	328	LEU
1	A	330	ARG
1	A	331	GLU
1	A	333	PHE
1	A	335	LEU
1	A	340	LEU
1	A	347	LEU
1	A	354	THR
1	A	362	ARG
1	A	363	GLU
1	A	369	LYS
1	A	371	ASP
1	A	372	LYS
1	A	374	GLN
1	A	375	LEU
1	A	377	ARG
1	A	382	LEU
1	A	383	LYS
1	B	9	SER
1	B	17	LYS
1	B	32	GLU
1	B	36	LYS
1	B	38	ARG
1	B	46	LYS
1	B	51	LEU
1	B	55	GLU
1	B	65	GLU
1	B	66	GLU
1	B	74	GLU
1	B	82	MET
1	B	87	ASN
1	B	92	LEU
1	B	99	SER
1	B	112	LEU
1	B	122	MET
1	B	150	GLU
1	B	161	ARG

Continued on next page...

Continued from previous page...

Mol	Chain	Res	Type
1	B	169	THR
1	B	181	ASP
1	B	185	LEU
1	B	193	ILE
1	B	203	MET
1	B	205	GLU
1	B	208	LYS
1	B	211	LEU
1	B	214	GLU
1	B	218	SER
1	B	221	LYS
1	B	230	PHE
1	B	241	LEU
1	B	245	LYS
1	B	246	ILE
1	B	256	ARG
1	B	265	LYS
1	B	269	LYS
1	B	270	VAL
1	B	279	ARG
1	B	294	CYS
1	B	309	SER
1	B	311	MET
1	B	312	VAL
1	B	317	THR
1	B	322	SER
1	B	323	GLU
1	B	326	THR
1	B	327	LEU
1	B	328	LEU
1	B	330	ARG
1	B	331	GLU
1	B	333	PHE
1	B	335	LEU
1	B	340	LEU
1	B	341	ILE
1	B	347	LEU
1	B	354	THR
1	B	362	ARG
1	B	363	GLU
1	B	369	LYS
1	B	371	ASP

Continued on next page...

Continued from previous page...

Mol	Chain	Res	Type
1	B	372	LYS
1	B	374	GLN
1	B	375	LEU
1	B	377	ARG
1	B	382	LEU
1	B	383	LYS
1	C	9	SER
1	C	17	LYS
1	C	32	GLU
1	C	36	LYS
1	C	38	ARG
1	C	46	LYS
1	C	51	LEU
1	C	55	GLU
1	C	65	GLU
1	C	66	GLU
1	C	74	GLU
1	C	82	MET
1	C	87	ASN
1	C	92	LEU
1	C	99	SER
1	C	112	LEU
1	C	122	MET
1	C	150	GLU
1	C	161	ARG
1	C	169	THR
1	C	181	ASP
1	C	185	LEU
1	C	193	ILE
1	C	196	LYS
1	C	203	MET
1	C	205	GLU
1	C	208	LYS
1	C	211	LEU
1	C	214	GLU
1	C	218	SER
1	C	221	LYS
1	C	230	PHE
1	C	241	LEU
1	C	245	LYS
1	C	246	ILE
1	C	256	ARG

Continued on next page...

Continued from previous page...

Mol	Chain	Res	Type
1	C	265	LYS
1	C	269	LYS
1	C	270	VAL
1	C	279	ARG
1	C	294	CYS
1	C	309	SER
1	C	311	MET
1	C	312	VAL
1	C	317	THR
1	C	322	SER
1	C	323	GLU
1	C	326	THR
1	C	327	LEU
1	C	328	LEU
1	C	330	ARG
1	C	331	GLU
1	C	333	PHE
1	C	335	LEU
1	C	340	LEU
1	C	341	ILE
1	C	347	LEU
1	C	354	THR
1	C	362	ARG
1	C	363	GLU
1	C	369	LYS
1	C	370	THR
1	C	371	ASP
1	C	372	LYS
1	C	374	GLN
1	C	375	LEU
1	C	377	ARG
1	C	382	LEU
1	C	383	LYS
1	D	9	SER
1	D	17	LYS
1	D	32	GLU
1	D	36	LYS
1	D	38	ARG
1	D	46	LYS
1	D	51	LEU
1	D	55	GLU
1	D	65	GLU

Continued on next page...

Continued from previous page...

Mol	Chain	Res	Type
1	D	66	GLU
1	D	74	GLU
1	D	82	MET
1	D	87	ASN
1	D	92	LEU
1	D	99	SER
1	D	112	LEU
1	D	122	MET
1	D	150	GLU
1	D	161	ARG
1	D	169	THR
1	D	181	ASP
1	D	185	LEU
1	D	193	ILE
1	D	203	MET
1	D	205	GLU
1	D	208	LYS
1	D	211	LEU
1	D	214	GLU
1	D	218	SER
1	D	221	LYS
1	D	227	THR
1	D	230	PHE
1	D	241	LEU
1	D	245	LYS
1	D	246	ILE
1	D	256	ARG
1	D	265	LYS
1	D	269	LYS
1	D	270	VAL
1	D	279	ARG
1	D	294	CYS
1	D	309	SER
1	D	311	MET
1	D	312	VAL
1	D	317	THR
1	D	322	SER
1	D	323	GLU
1	D	326	THR
1	D	327	LEU
1	D	328	LEU
1	D	330	ARG

Continued on next page...

Continued from previous page...

Mol	Chain	Res	Type
1	D	331	GLU
1	D	333	PHE
1	D	335	LEU
1	D	340	LEU
1	D	341	ILE
1	D	347	LEU
1	D	354	THR
1	D	362	ARG
1	D	363	GLU
1	D	369	LYS
1	D	371	ASP
1	D	372	LYS
1	D	374	GLN
1	D	375	LEU
1	D	377	ARG
1	D	382	LEU
1	D	383	LYS

Some sidechains can be flipped to improve hydrogen bonding and reduce clashes. All (38) such sidechains are listed below:

Mol	Chain	Res	Type
1	A	3	HIS
1	A	21	GLN
1	A	33	GLN
1	A	79	HIS
1	A	114	GLN
1	A	119	GLN
1	A	146	GLN
1	A	257	HIS
1	A	297	GLN
1	A	324	GLN
1	B	21	GLN
1	B	33	GLN
1	B	79	HIS
1	B	114	GLN
1	B	119	GLN
1	B	146	GLN
1	B	257	HIS
1	B	297	GLN
1	B	324	GLN
1	C	3	HIS
1	C	21	GLN

Continued on next page...

Continued from previous page...

Mol	Chain	Res	Type
1	C	33	GLN
1	C	79	HIS
1	C	114	GLN
1	C	119	GLN
1	C	146	GLN
1	C	257	HIS
1	C	324	GLN
1	D	3	HIS
1	D	21	GLN
1	D	33	GLN
1	D	79	HIS
1	D	104	GLN
1	D	114	GLN
1	D	119	GLN
1	D	146	GLN
1	D	257	HIS
1	D	324	GLN

5.3.3 RNA [i](#)

There are no RNA molecules in this entry.

5.4 Non-standard residues in protein, DNA, RNA chains [i](#)

There are no non-standard protein/DNA/RNA residues in this entry.

5.5 Carbohydrates [i](#)

There are no carbohydrates in this entry.

5.6 Ligand geometry [i](#)

Of 20 ligands modelled in this entry, 12 are monoatomic - leaving 8 for Mogul analysis.

In the following table, the Counts columns list the number of bonds (or angles) for which Mogul statistics could be retrieved, the number of bonds (or angles) that are observed in the model and the number of bonds (or angles) that are defined in the chemical component dictionary. The Link column lists molecule types, if any, to which the group is linked. The Z score for a bond length (or angle) is the number of standard deviations the observed value is removed from the expected value. A bond length (or angle) with $|Z| > 2$ is considered an outlier worth inspection. RMSZ is the root-mean-square of all Z scores of the bond lengths (or angles).

Mol	Type	Chain	Res	Link	Bond lengths			Bond angles		
					Counts	RMSZ	# Z > 2	Counts	RMSZ	# Z > 2
5	PPK	A	384	3,2	11,12,12	3.74	4 (36%)	14,20,20	4.09	6 (42%)
4	SAM	A	385	-	21,29,29	1.19	4 (19%)	17,42,42	1.06	2 (11%)
5	PPK	B	484	3,2	11,12,12	3.69	3 (27%)	14,20,20	4.12	7 (50%)
4	SAM	B	485	-	21,29,29	1.08	2 (9%)	17,42,42	1.14	2 (11%)
5	PPK	C	584	3,2	11,12,12	3.73	4 (36%)	14,20,20	4.23	6 (42%)
4	SAM	C	585	-	21,29,29	1.13	2 (9%)	17,42,42	1.04	2 (11%)
4	SAM	C	685	-	21,29,29	1.04	1 (4%)	17,42,42	1.06	2 (11%)
5	PPK	D	684	3,2	11,12,12	3.41	3 (27%)	14,20,20	4.18	6 (42%)

In the following table, the Chirals column lists the number of chiral outliers, the number of chiral centers analysed, the number of these observed in the model and the number defined in the chemical component dictionary. Similar counts are reported in the Torsion and Rings columns. '-' means no outliers of that kind were identified.

Mol	Type	Chain	Res	Link	Chirals	Torsions	Rings
5	PPK	A	384	3,2	-	0/6/12/12	0/0/0/0
4	SAM	A	385	-	-	0/8/33/33	0/3/3/3
5	PPK	B	484	3,2	-	0/6/12/12	0/0/0/0
4	SAM	B	485	-	-	0/8/33/33	0/3/3/3
5	PPK	C	584	3,2	-	0/6/12/12	0/0/0/0
4	SAM	C	585	-	-	0/8/33/33	0/3/3/3
4	SAM	C	685	-	-	0/8/33/33	0/3/3/3
5	PPK	D	684	3,2	-	0/6/12/12	0/0/0/0

All (23) bond length outliers are listed below:

Mol	Chain	Res	Type	Atoms	Z	Observed(Å)	Ideal(Å)
4	B	485	SAM	CG-CB	-2.89	1.48	1.52
4	A	385	SAM	CG-CB	-2.73	1.48	1.52
4	A	385	SAM	C8-N7	-2.01	1.30	1.34
4	B	485	SAM	C2-N3	2.02	1.35	1.32
5	C	584	PPK	PB-O3A	2.15	1.61	1.59
4	A	385	SAM	C4-N3	2.31	1.39	1.35
4	C	585	SAM	C2-N3	2.46	1.36	1.32
4	C	585	SAM	C4-N3	2.46	1.39	1.35
4	A	385	SAM	C2-N3	2.48	1.36	1.32
5	A	384	PPK	PB-O3A	2.60	1.62	1.59
4	C	685	SAM	C2-N3	2.62	1.36	1.32
5	D	684	PPK	PA-O4A	2.81	1.60	1.51
5	C	584	PPK	PA-O4A	2.88	1.60	1.51

Continued on next page...

Continued from previous page...

Mol	Chain	Res	Type	Atoms	Z	Observed(Å)	Ideal(Å)
5	A	384	PPK	PA-O4A	2.93	1.60	1.51
5	B	484	PPK	PA-O4A	3.07	1.61	1.51
5	A	384	PPK	PB-O2B	6.02	1.53	1.46
5	D	684	PPK	PB-O2B	6.28	1.53	1.46
5	B	484	PPK	PB-O2B	6.35	1.53	1.46
5	C	584	PPK	PB-O2B	7.98	1.55	1.46
5	C	584	PPK	PG-O3G	8.59	1.56	1.46
5	D	684	PPK	PG-O3G	8.63	1.56	1.46
5	B	484	PPK	PG-O3G	9.86	1.57	1.46
5	A	384	PPK	PG-O3G	10.08	1.57	1.46

All (33) bond angle outliers are listed below:

Mol	Chain	Res	Type	Atoms	Z	Observed(°)	Ideal(°)
5	C	584	PPK	O3G-PG-N3B	-10.30	96.10	111.90
5	D	684	PPK	O3G-PG-N3B	-9.76	96.92	111.90
5	D	684	PPK	O2G-PG-O3G	-9.54	88.12	113.49
5	B	484	PPK	O2G-PG-O3G	-9.21	89.00	113.49
5	A	384	PPK	O2G-PG-O3G	-9.15	89.16	113.49
5	C	584	PPK	O2G-PG-O3G	-9.10	89.30	113.49
5	A	384	PPK	O3G-PG-N3B	-9.08	97.97	111.90
5	B	484	PPK	O3G-PG-N3B	-9.05	98.02	111.90
5	B	484	PPK	O2B-PB-N3B	-4.90	104.39	111.90
5	A	384	PPK	O2B-PB-N3B	-4.72	104.66	111.90
5	C	584	PPK	O2B-PB-N3B	-4.59	104.86	111.90
5	D	684	PPK	O2B-PB-N3B	-4.16	105.53	111.90
5	A	384	PPK	O1G-PG-O3G	-2.82	106.01	113.49
5	C	584	PPK	O1G-PG-O3G	-2.60	106.57	113.49
5	D	684	PPK	O1G-PG-O3G	-2.56	106.69	113.49
5	B	484	PPK	O1G-PG-O3G	-2.51	106.83	113.49
4	B	485	SAM	C1'-N9-C4	-2.49	123.19	126.94
4	C	685	SAM	C1'-N9-C4	-2.28	123.50	126.94
4	C	585	SAM	C1'-N9-C4	-2.26	123.53	126.94
4	A	385	SAM	C1'-N9-C4	-2.17	123.67	126.94
5	B	484	PPK	PA-O3A-PB	-2.03	125.88	132.67
4	C	585	SAM	O2'-C2'-C3'	2.34	119.44	111.83
4	A	385	SAM	O2'-C2'-C3'	2.36	119.49	111.83
4	B	485	SAM	O2'-C2'-C3'	2.45	119.80	111.83
4	C	685	SAM	O2'-C2'-C3'	2.52	120.03	111.83
5	C	584	PPK	O3A-PB-N3B	3.28	115.46	106.44
5	D	684	PPK	O3A-PB-N3B	3.40	115.80	106.44
5	A	384	PPK	O3A-PB-N3B	3.64	116.46	106.44

Continued on next page...

Continued from previous page...

Mol	Chain	Res	Type	Atoms	Z	Observed(°)	Ideal(°)
5	B	484	PPK	O3A-PB-N3B	3.85	117.03	106.44
5	C	584	PPK	O2G-PG-O1G	4.04	119.56	107.58
5	B	484	PPK	O2G-PG-O1G	4.26	120.21	107.58
5	D	684	PPK	O2G-PG-O1G	4.28	120.27	107.58
5	A	384	PPK	O2G-PG-O1G	4.33	120.41	107.58

There are no chirality outliers.

There are no torsion outliers.

There are no ring outliers.

7 monomers are involved in 18 short contacts:

Mol	Chain	Res	Type	Clashes	Symm-Clashes
5	A	384	PPK	4	0
4	A	385	SAM	2	0
5	B	484	PPK	4	0
4	B	485	SAM	2	0
5	C	584	PPK	3	0
4	C	585	SAM	2	0
5	D	684	PPK	3	0

5.7 Other polymers [i](#)

There are no such residues in this entry.

5.8 Polymer linkage issues [i](#)

There are no chain breaks in this entry.

6 Fit of model and data ⓘ

6.1 Protein, DNA and RNA chains ⓘ

In the following table, the column labelled ‘#RSRZ> 2’ contains the number (and percentage) of RSRZ outliers, followed by percent RSRZ outliers for the chain as percentile scores relative to all X-ray entries and entries of similar resolution. The OWAB column contains the minimum, median, 95th percentile and maximum values of the occupancy-weighted average B-factor per residue. The column labelled ‘Q< 0.9’ lists the number of (and percentage) of residues with an average occupancy less than 0.9.

Mol	Chain	Analysed	<RSRZ>	#RSRZ>2	OWAB(Å ²)	Q<0.9
1	A	383/383 (100%)	-0.81	0 100 100	2, 11, 41, 64	0
1	B	383/383 (100%)	-0.82	5 (1%) 79 82	2, 12, 45, 73	0
1	C	383/383 (100%)	-0.57	4 (1%) 84 86	3, 19, 47, 74	0
1	D	383/383 (100%)	-0.48	7 (1%) 71 75	3, 23, 51, 77	0
All	All	1532/1532 (100%)	-0.67	16 (1%) 84 86	2, 15, 47, 77	0

All (16) RSRZ outliers are listed below:

Mol	Chain	Res	Type	RSRZ
1	D	1	ALA	6.2
1	C	327	LEU	3.6
1	C	1	ALA	3.3
1	D	380	ALA	2.7
1	D	175	GLY	2.6
1	D	381	GLY	2.6
1	D	174	ASP	2.4
1	B	114	GLN	2.3
1	D	324	GLN	2.2
1	C	380	ALA	2.2
1	B	323	GLU	2.1
1	B	330	ARG	2.1
1	B	174	ASP	2.1
1	B	382	LEU	2.1
1	D	114	GLN	2.1
1	C	174	ASP	2.1

6.2 Non-standard residues in protein, DNA, RNA chains ⓘ

There are no non-standard protein/DNA/RNA residues in this entry.

6.3 Carbohydrates ⓘ

There are no carbohydrates in this entry.

6.4 Ligands ⓘ

In the following table, the Atoms column lists the number of modelled atoms in the group and the number defined in the chemical component dictionary. LLDF column lists the quality of electron density of the group with respect to its neighbouring residues in protein, DNA or RNA chains. The B-factors column lists the minimum, median, 95th percentile and maximum values of B factors of atoms in the group. The column labelled 'Q< 0.9' lists the number of atoms with occupancy less than 0.9.

Mol	Type	Chain	Res	Atoms	RSCC	RSR	LLDF	B-factors(Å ²)	Q<0.9
3	MG	C	588	1/1	0.89	0.24	8.15	40,40,40,40	0
3	MG	D	688	1/1	0.93	0.18	7.42	23,23,23,23	0
3	MG	B	487	1/1	0.91	0.19	6.82	27,27,27,27	0
3	MG	C	687	1/1	0.86	0.25	6.16	41,41,41,41	0
3	MG	A	388	1/1	0.88	0.19	5.72	24,24,24,24	0
3	MG	D	587	1/1	0.92	0.16	1.94	17,17,17,17	0
3	MG	A	387	1/1	0.93	0.10	1.80	23,23,23,23	0
3	MG	B	488	1/1	0.96	0.10	0.83	8,8,8,8	0
5	PPK	B	484	13/13	0.98	0.09	0.23	2,8,15,17	0
5	PPK	C	584	13/13	0.97	0.10	0.13	4,19,25,29	0
5	PPK	A	384	13/13	0.98	0.09	-0.10	6,11,18,19	0
4	SAM	B	485	27/27	0.98	0.08	-0.12	2,5,25,30	0
4	SAM	A	385	27/27	0.97	0.09	-0.19	2,12,20,21	0
4	SAM	C	585	27/27	0.97	0.09	-0.22	2,14,19,22	0
4	SAM	C	685	27/27	0.97	0.09	-0.67	7,13,18,19	0
5	PPK	D	684	13/13	0.98	0.07	-1.63	2,9,24,24	0
2	K	B	486	1/1	1.00	0.03	-	2,2,2,2	0
2	K	D	686	1/1	0.93	0.11	-	41,41,41,41	0
2	K	C	586	1/1	0.98	0.05	-	18,18,18,18	0
2	K	A	386	1/1	0.99	0.10	-	4,4,4,4	0

6.5 Other polymers ⓘ

There are no such residues in this entry.