



Full wwPDB X-ray Structure Validation Report ⓘ

Feb 19, 2016 – 07:16 PM GMT

PDB ID : 4RGQ
Title : Crystal structure of the Methanocaldococcus jannaschii G1PDH with NADPH and DHAP
Authors : Carbone, V.; Ronimus, R.S.; Schofield, L.R.; Sutherland-Smith, A.J.
Deposited on : 2014-09-30
Resolution : 2.23 Å(reported)

This is a Full wwPDB X-ray Structure Validation Report for a publicly released PDB entry.
We welcome your comments at validation@mail.wwpdb.org
A user guide is available at
<http://wwpdb.org/validation/2016/XrayValidationReportHelp>
with specific help available everywhere you see the ⓘ symbol.

The following versions of software and data (see [references ⓘ](#)) were used in the production of this report:

MolProbity : 4.02b-467
Mogul : 1.7.1 (RC1), CSD as537be (2016)
Xtriage (Phenix) : 1.9-1692
EDS : rb-20026982
Percentile statistics : 20151230.v01 (using entries in the PDB archive December 30th 2015)
Refmac : 5.8.0135
CCP4 : 6.5.0
Ideal geometry (proteins) : Engh & Huber (2001)
Ideal geometry (DNA, RNA) : Parkinson et al. (1996)
Validation Pipeline (wwPDB-VP) : rb-20026982

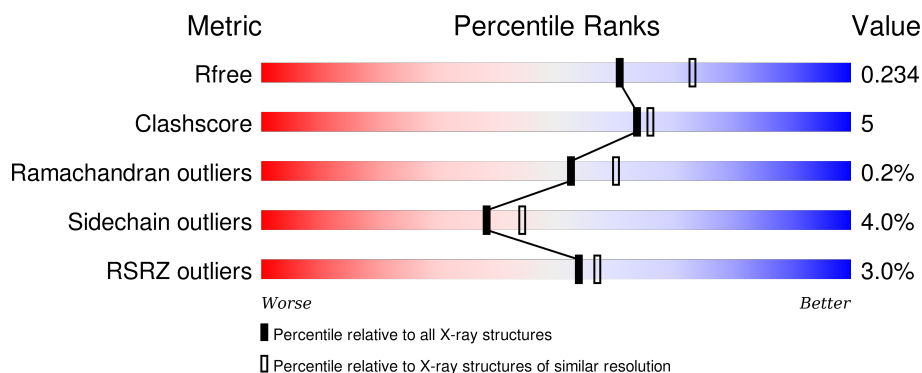
1 Overall quality at a glance

The following experimental techniques were used to determine the structure:

X-RAY DIFFRACTION

The reported resolution of this entry is 2.23 Å.

Percentile scores (ranging between 0-100) for global validation metrics of the entry are shown in the following graphic. The table shows the number of entries on which the scores are based.



Metric	Whole archive (#Entries)	Similar resolution (#Entries, resolution range(Å))
R_{free}	91344	1611 (2.26-2.22)
Clashscore	102246	1764 (2.26-2.22)
Ramachandran outliers	100387	1724 (2.26-2.22)
Sidechain outliers	100360	1724 (2.26-2.22)
RSRZ outliers	91569	1616 (2.26-2.22)

The table below summarises the geometric issues observed across the polymeric chains and their fit to the electron density. The red, orange, yellow and green segments on the lower bar indicate the fraction of residues that contain outliers for ≥ 3 , 2, 1 and 0 types of geometric quality criteria. A grey segment represents the fraction of residues that are not modelled. The numeric value for each fraction is indicated below the corresponding segment, with a dot representing fractions $\leq 5\%$. The upper red bar (where present) indicates the fraction of residues that have poor fit to the electron density. The numeric value is given above the bar.

Mol	Chain	Length	Quality of chain
1	A	368	
1	B	368	
1	C	368	
1	D	368	

The following table lists non-polymeric compounds, carbohydrate monomers and non-standard

residues in protein, DNA, RNA chains that are outliers for geometric or electron-density-fit criteria:

Mol	Type	Chain	Res	Chirality	Geometry	Clashes	Electron density
6	EDO	A	407	-	-	-	X
6	EDO	A	408	-	-	-	X
6	EDO	A	411	-	-	-	X
6	EDO	C	406	-	-	-	X
6	EDO	D	405	-	-	-	X
6	EDO	D	407	-	-	-	X
6	EDO	D	408	-	-	-	X

2 Entry composition

There are 8 unique types of molecules in this entry. The entry contains 11229 atoms, of which 0 are hydrogens and 0 are deuteriums.

In the tables below, the ZeroOcc column contains the number of atoms modelled with zero occupancy, the AltConf column contains the number of residues with at least one atom in alternate conformation and the Trace column contains the number of residues modelled with at most 2 atoms.

- Molecule 1 is a protein called Glycerol-1-phosphate dehydrogenase.

Mol	Chain	Residues	Atoms					ZeroOcc	AltConf	Trace
1	A	332	Total	C	N	O	S	0	0	0
			2596	1660	435	492	9			
1	B	333	Total	C	N	O	S	0	8	0
			2667	1709	444	504	10			
1	C	330	Total	C	N	O	S	0	2	0
			2592	1658	435	490	9			
1	D	331	Total	C	N	O	S	0	2	0
			2593	1658	434	491	10			

There are 132 discrepancies between the modelled and reference sequences:

Chain	Residue	Modelled	Actual	Comment	Reference
A	-32	MET	-	EXPRESSION TAG	UNP Q58122
A	-31	HIS	-	EXPRESSION TAG	UNP Q58122
A	-30	HIS	-	EXPRESSION TAG	UNP Q58122
A	-29	HIS	-	EXPRESSION TAG	UNP Q58122
A	-28	HIS	-	EXPRESSION TAG	UNP Q58122
A	-27	HIS	-	EXPRESSION TAG	UNP Q58122
A	-26	HIS	-	EXPRESSION TAG	UNP Q58122
A	-25	GLY	-	EXPRESSION TAG	UNP Q58122
A	-24	LYS	-	EXPRESSION TAG	UNP Q58122
A	-23	PRO	-	EXPRESSION TAG	UNP Q58122
A	-22	ILE	-	EXPRESSION TAG	UNP Q58122
A	-21	PRO	-	EXPRESSION TAG	UNP Q58122
A	-20	ASN	-	EXPRESSION TAG	UNP Q58122
A	-19	PRO	-	EXPRESSION TAG	UNP Q58122
A	-18	LEU	-	EXPRESSION TAG	UNP Q58122
A	-17	LEU	-	EXPRESSION TAG	UNP Q58122
A	-16	GLY	-	EXPRESSION TAG	UNP Q58122
A	-15	LEU	-	EXPRESSION TAG	UNP Q58122
A	-14	ASP	-	EXPRESSION TAG	UNP Q58122
A	-13	SER	-	EXPRESSION TAG	UNP Q58122
A	-12	THR	-	EXPRESSION TAG	UNP Q58122

Continued on next page...

Continued from previous page...

Chain	Residue	Modelled	Actual	Comment	Reference
A	-11	GLU	-	EXPRESSION TAG	UNP Q58122
A	-10	ASN	-	EXPRESSION TAG	UNP Q58122
A	-9	LEU	-	EXPRESSION TAG	UNP Q58122
A	-8	TYR	-	EXPRESSION TAG	UNP Q58122
A	-7	PHE	-	EXPRESSION TAG	UNP Q58122
A	-6	GLN	-	EXPRESSION TAG	UNP Q58122
A	-5	GLY	-	EXPRESSION TAG	UNP Q58122
A	-4	ILE	-	EXPRESSION TAG	UNP Q58122
A	-3	ASP	-	EXPRESSION TAG	UNP Q58122
A	-2	PRO	-	EXPRESSION TAG	UNP Q58122
A	-1	PHE	-	EXPRESSION TAG	UNP Q58122
A	0	THR	-	EXPRESSION TAG	UNP Q58122
B	-32	MET	-	EXPRESSION TAG	UNP Q58122
B	-31	HIS	-	EXPRESSION TAG	UNP Q58122
B	-30	HIS	-	EXPRESSION TAG	UNP Q58122
B	-29	HIS	-	EXPRESSION TAG	UNP Q58122
B	-28	HIS	-	EXPRESSION TAG	UNP Q58122
B	-27	HIS	-	EXPRESSION TAG	UNP Q58122
B	-26	HIS	-	EXPRESSION TAG	UNP Q58122
B	-25	GLY	-	EXPRESSION TAG	UNP Q58122
B	-24	LYS	-	EXPRESSION TAG	UNP Q58122
B	-23	PRO	-	EXPRESSION TAG	UNP Q58122
B	-22	ILE	-	EXPRESSION TAG	UNP Q58122
B	-21	PRO	-	EXPRESSION TAG	UNP Q58122
B	-20	ASN	-	EXPRESSION TAG	UNP Q58122
B	-19	PRO	-	EXPRESSION TAG	UNP Q58122
B	-18	LEU	-	EXPRESSION TAG	UNP Q58122
B	-17	LEU	-	EXPRESSION TAG	UNP Q58122
B	-16	GLY	-	EXPRESSION TAG	UNP Q58122
B	-15	LEU	-	EXPRESSION TAG	UNP Q58122
B	-14	ASP	-	EXPRESSION TAG	UNP Q58122
B	-13	SER	-	EXPRESSION TAG	UNP Q58122
B	-12	THR	-	EXPRESSION TAG	UNP Q58122
B	-11	GLU	-	EXPRESSION TAG	UNP Q58122
B	-10	ASN	-	EXPRESSION TAG	UNP Q58122
B	-9	LEU	-	EXPRESSION TAG	UNP Q58122
B	-8	TYR	-	EXPRESSION TAG	UNP Q58122
B	-7	PHE	-	EXPRESSION TAG	UNP Q58122
B	-6	GLN	-	EXPRESSION TAG	UNP Q58122
B	-5	GLY	-	EXPRESSION TAG	UNP Q58122
B	-4	ILE	-	EXPRESSION TAG	UNP Q58122
B	-3	ASP	-	EXPRESSION TAG	UNP Q58122

Continued on next page...

Continued from previous page...

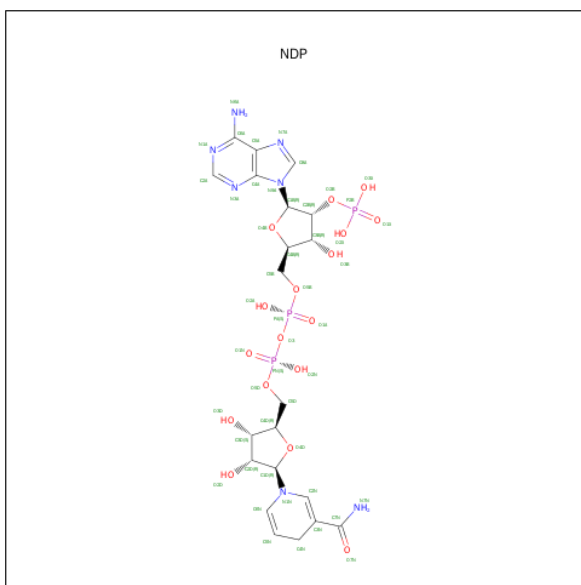
Chain	Residue	Modelled	Actual	Comment	Reference
B	-2	PRO	-	EXPRESSION TAG	UNP Q58122
B	-1	PHE	-	EXPRESSION TAG	UNP Q58122
B	0	THR	-	EXPRESSION TAG	UNP Q58122
C	-32	MET	-	EXPRESSION TAG	UNP Q58122
C	-31	HIS	-	EXPRESSION TAG	UNP Q58122
C	-30	HIS	-	EXPRESSION TAG	UNP Q58122
C	-29	HIS	-	EXPRESSION TAG	UNP Q58122
C	-28	HIS	-	EXPRESSION TAG	UNP Q58122
C	-27	HIS	-	EXPRESSION TAG	UNP Q58122
C	-26	HIS	-	EXPRESSION TAG	UNP Q58122
C	-25	GLY	-	EXPRESSION TAG	UNP Q58122
C	-24	LYS	-	EXPRESSION TAG	UNP Q58122
C	-23	PRO	-	EXPRESSION TAG	UNP Q58122
C	-22	ILE	-	EXPRESSION TAG	UNP Q58122
C	-21	PRO	-	EXPRESSION TAG	UNP Q58122
C	-20	ASN	-	EXPRESSION TAG	UNP Q58122
C	-19	PRO	-	EXPRESSION TAG	UNP Q58122
C	-18	LEU	-	EXPRESSION TAG	UNP Q58122
C	-17	LEU	-	EXPRESSION TAG	UNP Q58122
C	-16	GLY	-	EXPRESSION TAG	UNP Q58122
C	-15	LEU	-	EXPRESSION TAG	UNP Q58122
C	-14	ASP	-	EXPRESSION TAG	UNP Q58122
C	-13	SER	-	EXPRESSION TAG	UNP Q58122
C	-12	THR	-	EXPRESSION TAG	UNP Q58122
C	-11	GLU	-	EXPRESSION TAG	UNP Q58122
C	-10	ASN	-	EXPRESSION TAG	UNP Q58122
C	-9	LEU	-	EXPRESSION TAG	UNP Q58122
C	-8	TYR	-	EXPRESSION TAG	UNP Q58122
C	-7	PHE	-	EXPRESSION TAG	UNP Q58122
C	-6	GLN	-	EXPRESSION TAG	UNP Q58122
C	-5	GLY	-	EXPRESSION TAG	UNP Q58122
C	-4	ILE	-	EXPRESSION TAG	UNP Q58122
C	-3	ASP	-	EXPRESSION TAG	UNP Q58122
C	-2	PRO	-	EXPRESSION TAG	UNP Q58122
C	-1	PHE	-	EXPRESSION TAG	UNP Q58122
C	0	THR	-	EXPRESSION TAG	UNP Q58122
D	-32	MET	-	EXPRESSION TAG	UNP Q58122
D	-31	HIS	-	EXPRESSION TAG	UNP Q58122
D	-30	HIS	-	EXPRESSION TAG	UNP Q58122
D	-29	HIS	-	EXPRESSION TAG	UNP Q58122
D	-28	HIS	-	EXPRESSION TAG	UNP Q58122
D	-27	HIS	-	EXPRESSION TAG	UNP Q58122

Continued on next page...

Continued from previous page...

Chain	Residue	Modelled	Actual	Comment	Reference
D	-26	HIS	-	EXPRESSION TAG	UNP Q58122
D	-25	GLY	-	EXPRESSION TAG	UNP Q58122
D	-24	LYS	-	EXPRESSION TAG	UNP Q58122
D	-23	PRO	-	EXPRESSION TAG	UNP Q58122
D	-22	ILE	-	EXPRESSION TAG	UNP Q58122
D	-21	PRO	-	EXPRESSION TAG	UNP Q58122
D	-20	ASN	-	EXPRESSION TAG	UNP Q58122
D	-19	PRO	-	EXPRESSION TAG	UNP Q58122
D	-18	LEU	-	EXPRESSION TAG	UNP Q58122
D	-17	LEU	-	EXPRESSION TAG	UNP Q58122
D	-16	GLY	-	EXPRESSION TAG	UNP Q58122
D	-15	LEU	-	EXPRESSION TAG	UNP Q58122
D	-14	ASP	-	EXPRESSION TAG	UNP Q58122
D	-13	SER	-	EXPRESSION TAG	UNP Q58122
D	-12	THR	-	EXPRESSION TAG	UNP Q58122
D	-11	GLU	-	EXPRESSION TAG	UNP Q58122
D	-10	ASN	-	EXPRESSION TAG	UNP Q58122
D	-9	LEU	-	EXPRESSION TAG	UNP Q58122
D	-8	TYR	-	EXPRESSION TAG	UNP Q58122
D	-7	PHE	-	EXPRESSION TAG	UNP Q58122
D	-6	GLN	-	EXPRESSION TAG	UNP Q58122
D	-5	GLY	-	EXPRESSION TAG	UNP Q58122
D	-4	ILE	-	EXPRESSION TAG	UNP Q58122
D	-3	ASP	-	EXPRESSION TAG	UNP Q58122
D	-2	PRO	-	EXPRESSION TAG	UNP Q58122
D	-1	PHE	-	EXPRESSION TAG	UNP Q58122
D	0	THR	-	EXPRESSION TAG	UNP Q58122

- Molecule 2 is NADPH DIHYDRO-NICOTINAMIDE-ADENINE-DINUCLEOTIDE PHOSPHATE (three-letter code: NDP) (formula: C₂₁H₃₀N₇O₁₇P₃).



Mol	Chain	Residues	Atoms					ZeroOcc	AltConf
2	A	1	Total	C	N	O	P	0	0
			48	21	7	17	3		
2	B	1	Total	C	N	O	P	0	0
			48	21	7	17	3		
2	C	1	Total	C	N	O	P	0	0
			48	21	7	17	3		
2	D	1	Total	C	N	O	P	0	0
			48	21	7	17	3		

- Molecule 3 is POTASSIUM ION (three-letter code: K) (formula: K).

Mol	Chain	Residues	Atoms		ZeroOcc	AltConf
3	B	1	Total	K	0	0
			1	1		
3	A	1	Total	K	0	0
			1	1		
3	D	1	Total	K	0	0
			1	1		
3	C	1	Total	K	0	0
			1	1		

- Molecule 4 is ZINC ION (three-letter code: ZN) (formula: Zn).

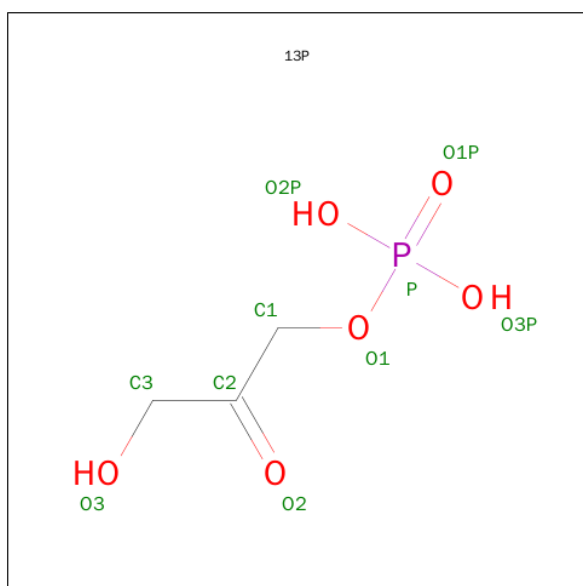
Mol	Chain	Residues	Atoms		ZeroOcc	AltConf
4	B	1	Total	Zn	0	0
			1	1		

Continued on next page...

Continued from previous page...

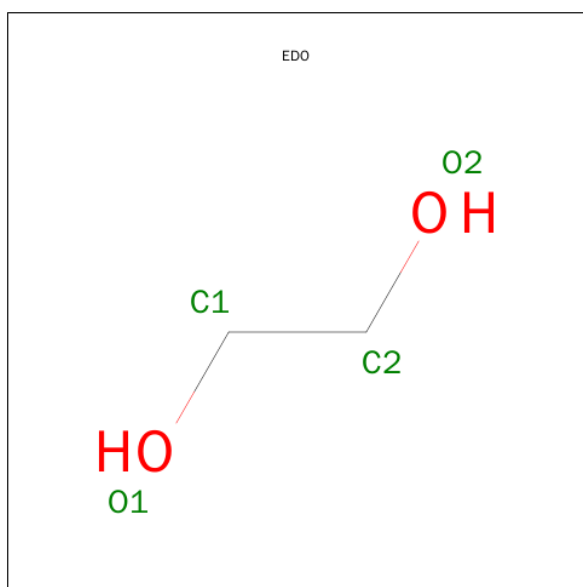
Mol	Chain	Residues	Atoms		ZeroOcc	AltConf
4	A	1	Total	Zn	0	0
			1	1		
4	D	1	Total	Zn	0	0
			1	1		
4	C	1	Total	Zn	0	0
			1	1		

- Molecule 5 is 1,3-DIHYDROXYACETONEPHOSPHATE (three-letter code: 13P) (formula: $C_3H_7O_6P$).



Mol	Chain	Residues	Atoms				ZeroOcc	AltConf
5	A	1	Total	C	O	P	0	0
			10	3	6	1		
5	C	1	Total	C	O	P	0	0
			10	3	6	1		
5	D	1	Total	C	O	P	0	0
			10	3	6	1		

- Molecule 6 is 1,2-ETHANEDIOL (three-letter code: EDO) (formula: $C_2H_6O_2$).



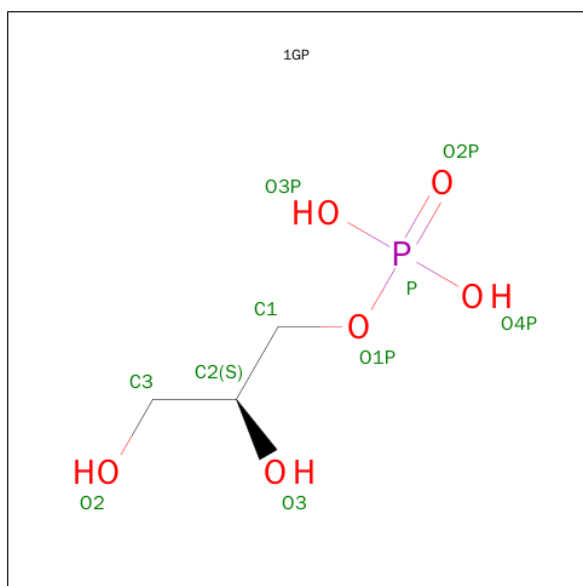
Mol	Chain	Residues	Atoms			ZeroOcc	AltConf
6	A	1	Total	C	O	0	0
			4	2	2		
6	A	1	Total	C	O	0	0
			4	2	2		
6	A	1	Total	C	O	0	0
			4	2	2		
6	A	1	Total	C	O	0	0
			4	2	2		
6	A	1	Total	C	O	0	0
			4	2	2		
6	A	1	Total	C	O	0	0
			4	2	2		
6	A	1	Total	C	O	0	0
			4	2	2		
6	B	1	Total	C	O	0	0
			4	2	2		
6	B	1	Total	C	O	0	0
			4	2	2		
6	B	1	Total	C	O	0	0
			4	2	2		
6	C	1	Total	C	O	0	0
			4	2	2		
6	C	1	Total	C	O	0	0
			4	2	2		

Continued on next page...

Continued from previous page...

Mol	Chain	Residues	Atoms			ZeroOcc	AltConf
6	C	1	Total	C	O	0	0
			4	2	2		
6	D	1	Total	C	O	0	0
			4	2	2		
6	D	1	Total	C	O	0	0
			4	2	2		
6	D	1	Total	C	O	0	0
			4	2	2		
6	D	1	Total	C	O	0	0
			4	2	2		

- Molecule 7 is SN-GLYCEROL-1-PHOSPHATE (three-letter code: 1GP) (formula: $C_3H_9O_6P$).



Mol	Chain	Residues	Atoms				ZeroOcc	AltConf
7	B	1	Total	C	O	P	0	1
			11	3	7	1		

- Molecule 8 is water.

Mol	Chain	Residues	Atoms		ZeroOcc	AltConf
8	A	151	Total	O	0	0
			151	151		
8	B	119	Total	O	0	0
			119	119		
8	C	87	Total	O	0	0
			87	87		

Continued on next page...

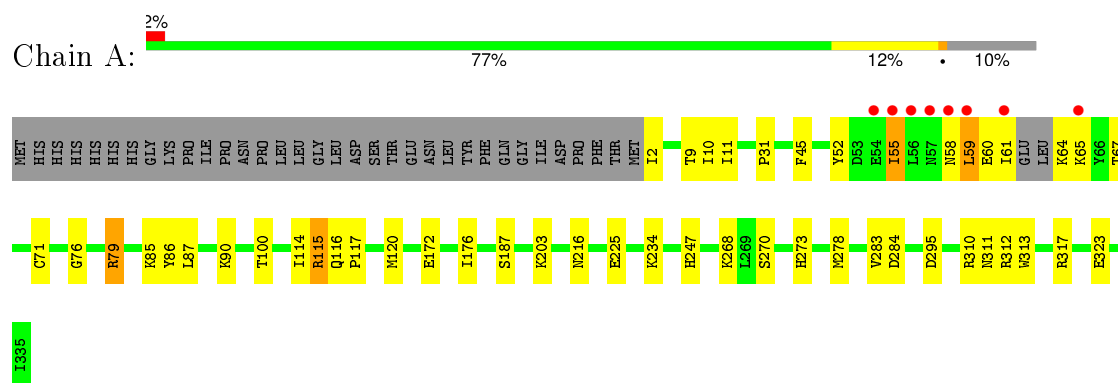
Continued from previous page...

Mol	Chain	Residues	Atoms		ZeroOcc	AltConf
8	D	107	Total	O	0	0
			107	107		

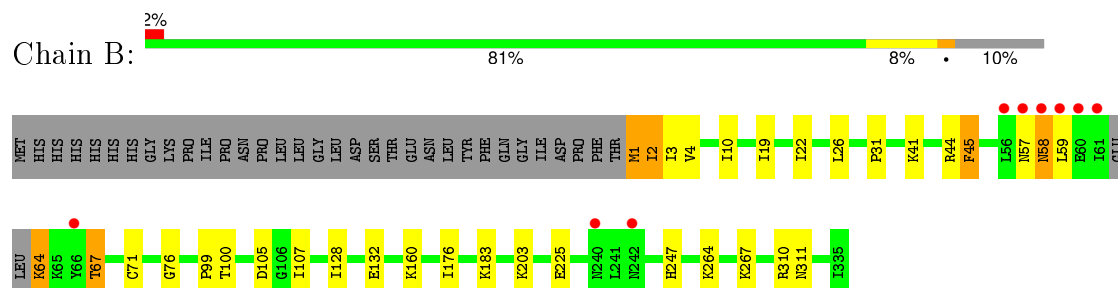
3 Residue-property plots [i](#)

These plots are drawn for all protein, RNA and DNA chains in the entry. The first graphic for a chain summarises the proportions of errors displayed in the second graphic. The second graphic shows the sequence view annotated by issues in geometry and electron density. Residues are color-coded according to the number of geometric quality criteria for which they contain at least one outlier: green = 0, yellow = 1, orange = 2 and red = 3 or more. A red dot above a residue indicates a poor fit to the electron density ($RSRZ > 2$). Stretches of 2 or more consecutive residues without any outlier are shown as a green connector. Residues present in the sample, but not in the model, are shown in grey.

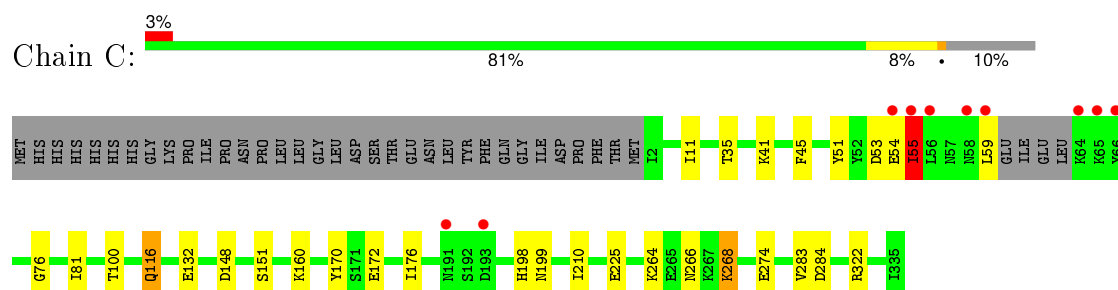
- Molecule 1: Glycerol-1-phosphate dehydrogenase



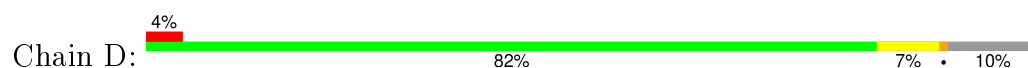
- Molecule 1: Glycerol-1-phosphate dehydrogenase

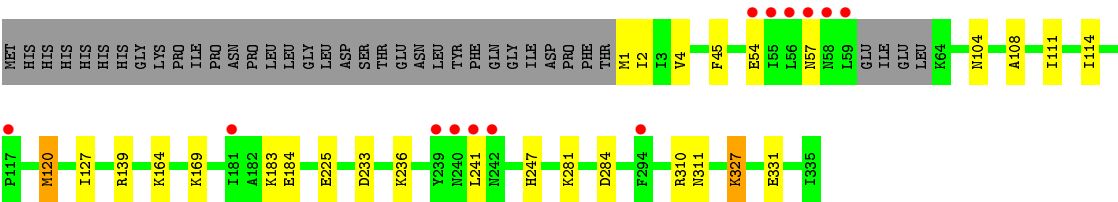


- Molecule 1: Glycerol-1-phosphate dehydrogenase



- Molecule 1: Glycerol-1-phosphate dehydrogenase





4 Data and refinement statistics

Property	Value	Source
Space group	P 1	Depositor
Cell constants a, b, c, α , β , γ	59.38 Å 71.90 Å 101.70 Å 77.52° 79.54° 75.60°	Depositor
Resolution (Å)	46.66 – 2.23 40.18 – 2.23	Depositor EDS
% Data completeness (in resolution range)	97.7 (46.66-2.23) 92.4 (40.18-2.23)	Depositor EDS
R_{merge}	(Not available)	Depositor
R_{sym}	(Not available)	Depositor
$\langle I/\sigma(I) \rangle$ ¹	1.73 (at 2.22 Å)	Xtriage
Refinement program	REFMAC 5.8.0049	Depositor
R, R_{free}	0.182 , 0.229 0.189 , 0.234	Depositor DCC
R_{free} test set	3800 reflections (5.32%)	DCC
Wilson B-factor (Å ²)	31.3	Xtriage
Anisotropy	0.524	Xtriage
Bulk solvent k_{sol} (e/Å ³), B_{sol} (Å ²)	0.33 , 49.4	EDS
Estimated twinning fraction	No twinning to report.	Xtriage
L-test for twinning ²	$\langle L \rangle = 0.49$, $\langle L^2 \rangle = 0.32$	Xtriage
Outliers	0 of 75579 reflections	Xtriage
F_o, F_c correlation	0.96	EDS
Total number of atoms	11229	wwPDB-VP
Average B, all atoms (Å ²)	36.0	wwPDB-VP

Xtriage's analysis on translational NCS is as follows: *The largest off-origin peak in the Patterson function is 4.74% of the height of the origin peak. No significant pseudotranslation is detected.*

¹Intensities estimated from amplitudes.

²Theoretical values of $\langle |L| \rangle$, $\langle L^2 \rangle$ for acentric reflections are 0.5, 0.375 respectively for untwinned datasets, and 0.333, 0.2 for perfectly twinned datasets.

5 Model quality [i](#)

5.1 Standard geometry [i](#)

Bond lengths and bond angles in the following residue types are not validated in this section: ZN, K, EDO, 1GP, 13P, NDP

The Z score for a bond length (or angle) is the number of standard deviations the observed value is removed from the expected value. A bond length (or angle) with $|Z| > 5$ is considered an outlier worth inspection. RMSZ is the root-mean-square of all Z scores of the bond lengths (or angles).

Mol	Chain	Bond lengths		Bond angles	
		RMSZ	$\# Z > 5$	RMSZ	$\# Z > 5$
1	A	0.73	0/2637	0.74	0/3552
1	B	0.71	0/2712	0.78	0/3653
1	C	0.69	0/2636	0.74	0/3551
1	D	0.70	0/2640	0.74	1/3555 (0.0%)
All	All	0.71	0/10625	0.75	1/14311 (0.0%)

There are no bond length outliers.

All (1) bond angle outliers are listed below:

Mol	Chain	Res	Type	Atoms	Z	Observed(°)	Ideal(°)
1	D	57	ASN	CB-CA-C	-5.37	99.67	110.40

There are no chirality outliers.

There are no planarity outliers.

5.2 Too-close contacts [i](#)

In the following table, the Non-H and H(model) columns list the number of non-hydrogen atoms and hydrogen atoms in the chain respectively. The H(added) column lists the number of hydrogen atoms added and optimized by MolProbity. The Clashes column lists the number of clashes within the asymmetric unit, whereas Symm-Clashes lists symmetry related clashes.

Mol	Chain	Non-H	H(model)	H(added)	Clashes	Symm-Clashes
1	A	2596	0	2689	43	0
1	B	2667	0	2765	39	0
1	C	2592	0	2688	16	0
1	D	2593	0	2694	19	0
2	A	48	0	26	2	0
2	B	48	0	26	3	0

Continued on next page...

Continued from previous page...

Mol	Chain	Non-H	H(model)	H(added)	Clashes	Symm-Clashes
2	C	48	0	26	1	0
2	D	48	0	26	4	0
3	A	1	0	0	0	0
3	B	1	0	0	0	0
3	C	1	0	0	0	0
3	D	1	0	0	0	0
4	A	1	0	0	0	0
4	B	1	0	0	0	0
4	C	1	0	0	0	0
4	D	1	0	0	0	0
5	A	10	0	5	0	0
5	C	10	0	5	0	0
5	D	10	0	5	0	0
6	A	32	0	48	6	0
6	B	16	0	24	5	0
6	C	12	0	18	1	0
6	D	16	0	24	1	0
7	B	11	0	5	2	0
8	A	151	0	0	6	0
8	B	119	0	0	1	0
8	C	87	0	0	5	0
8	D	107	0	0	6	0
All	All	11229	0	11074	114	0

The all-atom clashscore is defined as the number of clashes found per 1000 atoms (including hydrogen atoms). The all-atom clashscore for this structure is 5.

All (114) close contacts within the same asymmetric unit are listed below, sorted by their clash magnitude.

Atom-1	Atom-2	Interatomic distance (Å)	Clash overlap (Å)
1:B:64:LYS:HG3	1:B:67:THR:HG21	1.28	1.10
1:B:105:ASP:OD1	7:B:404[A]:1GP:H31	1.55	1.07
1:B:105:ASP:OD1	7:B:404[B]:1GP:H31	1.65	0.96
1:B:64:LYS:HG3	1:B:67:THR:CG2	1.97	0.93
1:A:114:ILE:CD1	1:A:115:ARG:HD3	1.99	0.92
1:A:114:ILE:HD12	1:A:115:ARG:HD3	1.60	0.82
6:A:407:EDO:H21	8:A:611:HOH:O	1.82	0.79
1:D:236:LYS:HA	1:D:241:LEU:HD12	1.65	0.78
1:B:247:HIS:CD2	2:B:401:NDP:H5N	2.18	0.77
1:B:26:LEU:O	6:B:408:EDO:H11	1.85	0.76
1:D:247:HIS:CD2	2:D:401:NDP:H5N	2.20	0.76

Continued on next page...

Continued from previous page...

Atom-1	Atom-2	Interatomic distance (Å)	Clash overlap (Å)
6:C:407:EDO:H22	8:D:597:HOH:O	1.94	0.67
1:A:2:ILE:N	6:A:412:EDO:HO1	1.93	0.66
1:C:116:GLN:NE2	8:C:580:HOH:O	2.29	0.66
1:B:10:ILE:HD12	1:B:22[A]:ILE:HD11	1.77	0.65
1:A:114:ILE:HD11	1:A:115:ARG:HD3	1.79	0.64
1:B:310:ARG:HG2	1:B:311:ASN:N	2.13	0.63
8:C:579:HOH:O	1:D:184:GLU:HB2	1.99	0.62
1:B:57:ASN:ND2	1:B:58:ASN:OD1	2.31	0.62
1:A:114:ILE:HD12	1:A:115:ARG:CD	2.30	0.62
1:B:64:LYS:HA	1:B:67:THR:HG22	1.83	0.60
1:C:274:GLU:HG3	8:C:521:HOH:O	2.02	0.59
6:A:407:EDO:H11	8:A:530:HOH:O	2.02	0.58
1:C:266:ASN:OD1	1:C:268:LYS:HG3	2.03	0.58
1:B:10:ILE:CD1	1:B:22[A]:ILE:HD11	2.33	0.58
1:C:264:LYS:NZ	8:C:583:HOH:O	2.37	0.58
1:B:264:LYS:NZ	6:B:407:EDO:H11	2.20	0.57
1:A:52:TYR:CE1	1:A:79:ARG:HG2	2.40	0.57
1:A:310:ARG:HG2	1:A:311:ASN:N	2.19	0.57
1:D:108:ALA:HB2	1:D:127:ILE:HD12	1.87	0.56
1:C:283:VAL:O	1:C:284:ASP:HB2	2.04	0.56
1:A:116:GLN:HG3	1:A:117:PRO:HA	1.86	0.56
1:D:139:ARG:HG3	8:D:585:HOH:O	2.05	0.56
1:B:64:LYS:O	1:B:67:THR:HG23	2.06	0.56
1:A:114:ILE:HD12	1:A:115:ARG:H	1.70	0.55
1:A:114:ILE:CD1	1:A:115:ARG:CD	2.79	0.55
1:B:264:LYS:HZ1	6:B:407:EDO:H11	1.71	0.55
1:A:203:LYS:HG2	1:B:1:MET:HE2	1.88	0.55
1:A:283:VAL:O	1:A:284:ASP:HB2	2.08	0.54
1:D:236:LYS:HA	1:D:241:LEU:CD1	2.36	0.54
1:A:176:ILE:HD11	1:B:176:ILE:HD11	1.91	0.52
1:B:1:MET:O	1:B:2[B]:ILE:HD13	2.09	0.52
1:A:64:LYS:HB3	8:A:594:HOH:O	2.10	0.52
1:A:10:ILE:HG23	1:B:2[B]:ILE:CD1	2.40	0.52
1:A:55:ILE:HD12	1:A:87:LEU:HD22	1.92	0.52
1:D:236:LYS:HG2	1:D:241:LEU:HD12	1.91	0.52
1:B:99:PRO:HB3	1:B:107[B]:ILE:HD12	1.91	0.52
2:D:401:NDP:H41N	8:D:501:HOH:O	2.09	0.50
1:A:9:THR:HB	1:B:3[B]:ILE:HG12	1.94	0.50
1:B:26:LEU:HB3	6:B:408:EDO:H12	1.94	0.49
1:A:313:TRP:CZ2	1:A:317:ARG:HG2	2.47	0.49
1:D:4:VAL:O	6:D:406:EDO:O2	2.28	0.49

Continued on next page...

Continued from previous page...

Atom-1	Atom-2	Interatomic distance (Å)	Clash overlap (Å)
1:A:59:LEU:HB3	8:A:575:HOH:O	2.12	0.49
1:C:172:GLU:OE1	1:D:183:LYS:HE3	2.13	0.49
1:B:64:LYS:HA	1:B:67:THR:CG2	2.43	0.49
1:A:11:ILE:HD12	1:B:1:MET:HE2	1.95	0.49
1:C:55:ILE:HD12	1:C:55:ILE:O	2.13	0.49
1:B:4:VAL:O	6:B:406:EDO:O2	2.26	0.49
1:A:114:ILE:HD12	1:A:115:ARG:N	2.27	0.48
1:C:11:ILE:O	1:D:1:MET:HB3	2.13	0.48
1:A:278:MET:HG2	8:A:589:HOH:O	2.13	0.48
2:D:401:NDP:H6N	2:D:401:NDP:H52N	1.97	0.47
1:A:323:GLU:H	1:A:323:GLU:CD	2.18	0.47
1:D:310:ARG:NH2	8:D:525:HOH:O	2.28	0.47
1:B:1:MET:C	1:B:2[B]:ILE:HD13	2.35	0.47
1:A:216:ASN:ND2	6:A:405:EDO:H22	2.29	0.47
1:D:327:LYS:HE3	8:D:532:HOH:O	2.13	0.47
1:A:203:LYS:HG2	1:B:1:MET:CE	2.45	0.46
1:A:58:ASN:O	1:A:59:LEU:HB2	2.14	0.46
1:B:203:LYS:NZ	8:B:575:HOH:O	2.48	0.46
1:B:31:PRO:HB3	1:B:71:CYS:SG	2.55	0.46
1:B:41:LYS:O	1:B:44:ARG:HD3	2.15	0.46
1:A:10:ILE:HG12	1:B:2[B]:ILE:HD12	1.98	0.46
1:D:108:ALA:CB	1:D:127:ILE:HD12	2.45	0.45
1:A:247:HIS:CD2	2:A:401:NDP:H5N	2.51	0.45
1:B:22[A]:ILE:HD12	1:B:128:ILE:CD1	2.47	0.45
1:D:236:LYS:CG	1:D:241:LEU:HD12	2.47	0.45
1:D:104:ASN:ND2	2:D:401:NDP:C6N	2.80	0.44
1:A:310:ARG:HD3	1:A:312:ARG:HB2	2.00	0.44
1:A:85:LYS:CG	6:A:406:EDO:H12	2.48	0.44
1:C:160:LYS:HG2	1:C:170:TYR:CZ	2.53	0.44
1:A:59:LEU:O	1:A:60:GLU:C	2.55	0.44
2:A:401:NDP:H51N	8:A:529:HOH:O	2.18	0.44
1:A:31:PRO:HB3	1:A:71:CYS:SG	2.57	0.44
1:D:111:ILE:HD13	1:D:120:MET:HG2	1.99	0.43
1:C:148:ASP:O	1:C:151:SER:HB2	2.18	0.43
1:A:115:ARG:HG2	1:A:115:ARG:O	2.19	0.43
1:C:76:GLY:HA2	1:C:100:THR:OG1	2.18	0.43
1:C:198:HIS:CE1	1:C:199[A]:ASN:ND2	2.86	0.43
1:D:310:ARG:HG2	1:D:311:ASN:N	2.33	0.43
1:B:57:ASN:O	1:B:58:ASN:C	2.57	0.43
1:A:86:TYR:OH	1:A:90:LYS:HD2	2.19	0.43
1:A:86:TYR:CZ	1:A:90:LYS:HD2	2.54	0.42

Continued on next page...

Continued from previous page...

Atom-1	Atom-2	Interatomic distance (Å)	Clash overlap (Å)
1:B:19:ILE:HD12	1:B:45[B]:PHE:CE2	2.55	0.42
1:A:172:GLU:OE2	1:B:183:LYS:HE2	2.20	0.41
1:A:114:ILE:H	1:A:114:ILE:HG13	1.65	0.41
1:D:233:ASP:HA	1:D:236:LYS:HE3	2.02	0.41
1:A:10:ILE:HG23	1:B:2[B]:ILE:HD12	2.00	0.41
1:C:59:LEU:HA	1:C:59:LEU:HD23	1.93	0.41
1:A:59:LEU:O	1:A:61:ILE:N	2.54	0.41
1:A:172:GLU:OE2	1:B:183:LYS:CE	2.68	0.41
1:B:267:LYS:HB2	1:B:267:LYS:HE3	1.85	0.41
1:C:53:ASP:C	1:C:55:ILE:H	2.25	0.41
1:B:76:GLY:HA2	1:B:100:THR:OG1	2.21	0.41
1:A:76:GLY:HA2	1:A:100:THR:OG1	2.20	0.41
1:A:85:LYS:HG2	6:A:406:EDO:H12	2.03	0.41
2:C:401:NDP:O1A	2:C:401:NDP:H51N	2.22	0.40
1:C:41:LYS:HE2	8:C:535:HOH:O	2.20	0.40
1:C:35:THR:O	1:C:51:TYR:HA	2.22	0.40
1:A:116:GLN:CG	1:A:117:PRO:HA	2.50	0.40
1:D:281:LYS:HE2	8:D:606:HOH:O	2.20	0.40

There are no symmetry-related clashes.

5.3 Torsion angles [i](#)

5.3.1 Protein backbone [i](#)

In the following table, the Percentiles column shows the percent Ramachandran outliers of the chain as a percentile score with respect to all X-ray entries followed by that with respect to entries of similar resolution.

The Analysed column shows the number of residues for which the backbone conformation was analysed, and the total number of residues.

Mol	Chain	Analysed	Favoured	Allowed	Outliers	Percentiles	
1	A	328/368 (89%)	319 (97%)	8 (2%)	1 (0%)	46	51
1	B	337/368 (92%)	325 (96%)	12 (4%)	0	100	100
1	C	328/368 (89%)	319 (97%)	7 (2%)	2 (1%)	30	29
1	D	329/368 (89%)	320 (97%)	9 (3%)	0	100	100
All	All	1322/1472 (90%)	1283 (97%)	36 (3%)	3 (0%)	52	60

All (3) Ramachandran outliers are listed below:

Mol	Chain	Res	Type
1	A	59	LEU
1	C	54	GLU
1	C	55	ILE

5.3.2 Protein sidechains ⓘ

In the following table, the Percentiles column shows the percent sidechain outliers of the chain as a percentile score with respect to all X-ray entries followed by that with respect to entries of similar resolution.

The Analysed column shows the number of residues for which the sidechain conformation was analysed, and the total number of residues.

Mol	Chain	Analysed	Rotameric	Outliers	Percentiles	
1	A	285/318 (90%)	271 (95%)	14 (5%)	31	33
1	B	294/318 (92%)	282 (96%)	12 (4%)	37	43
1	C	285/318 (90%)	275 (96%)	10 (4%)	43	51
1	D	286/318 (90%)	275 (96%)	11 (4%)	40	47
All	All	1150/1272 (90%)	1103 (96%)	47 (4%)	38	43

All (47) residues with a non-rotameric sidechain are listed below:

Mol	Chain	Res	Type
1	A	45	PHE
1	A	55	ILE
1	A	65	LYS
1	A	67	THR
1	A	79	ARG
1	A	115	ARG
1	A	120	MET
1	A	187	SER
1	A	225	GLU
1	A	234	LYS
1	A	268	LYS
1	A	270	SER
1	A	273	HIS
1	A	295	ASP
1	B	1	MET
1	B	2[A]	ILE
1	B	2[B]	ILE
1	B	45[A]	PHE
1	B	45[B]	PHE

Continued on next page...

Continued from previous page...

Mol	Chain	Res	Type
1	B	58	ASN
1	B	59	LEU
1	B	64	LYS
1	B	67	THR
1	B	132	GLU
1	B	160	LYS
1	B	225	GLU
1	C	45	PHE
1	C	55	ILE
1	C	81	ILE
1	C	116	GLN
1	C	132	GLU
1	C	176	ILE
1	C	210	ILE
1	C	225	GLU
1	C	268	LYS
1	C	322	ARG
1	D	2	ILE
1	D	45	PHE
1	D	54	GLU
1	D	114	ILE
1	D	120	MET
1	D	164	LYS
1	D	169	LYS
1	D	225	GLU
1	D	284	ASP
1	D	327	LYS
1	D	331	GLU

Some sidechains can be flipped to improve hydrogen bonding and reduce clashes. All (6) such sidechains are listed below:

Mol	Chain	Res	Type
1	A	216	ASN
1	B	57	ASN
1	B	240	ASN
1	B	311	ASN
1	D	116	GLN
1	D	311	ASN

5.3.3 RNA ⓘ

There are no RNA molecules in this entry.

5.4 Non-standard residues in protein, DNA, RNA chains ⓘ

There are no non-standard protein/DNA/RNA residues in this entry.

5.5 Carbohydrates ⓘ

There are no carbohydrates in this entry.

5.6 Ligand geometry ⓘ

Of 36 ligands modelled in this entry, 8 are monoatomic - leaving 28 for Mogul analysis.

In the following table, the Counts columns list the number of bonds (or angles) for which Mogul statistics could be retrieved, the number of bonds (or angles) that are observed in the model and the number of bonds (or angles) that are defined in the chemical component dictionary. The Link column lists molecule types, if any, to which the group is linked. The Z score for a bond length (or angle) is the number of standard deviations the observed value is removed from the expected value. A bond length (or angle) with $|Z| > 2$ is considered an outlier worth inspection. RMSZ is the root-mean-square of all Z scores of the bond lengths (or angles).

Mol	Type	Chain	Res	Link	Bond lengths			Bond angles		
					Counts	RMSZ	$\# Z > 2$	Counts	RMSZ	$\# Z > 2$
2	NDP	A	401	-	44,52,52	1.31	6 (13%)	55,80,80	1.86	9 (16%)
5	13P	A	404	3,4	9,9,9	1.08	1 (11%)	10,12,12	1.38	1 (10%)
6	EDO	A	405	-	3,3,3	0.88	0	2,2,2	0.64	0
6	EDO	A	406	-	3,3,3	0.40	0	2,2,2	0.56	0
6	EDO	A	407	-	3,3,3	0.42	0	2,2,2	0.23	0
6	EDO	A	408	-	3,3,3	0.44	0	2,2,2	0.45	0
6	EDO	A	409	-	3,3,3	0.25	0	2,2,2	0.94	0
6	EDO	A	410	-	3,3,3	0.44	0	2,2,2	0.55	0
6	EDO	A	411	-	3,3,3	0.27	0	2,2,2	0.67	0
6	EDO	A	412	-	3,3,3	0.55	0	2,2,2	0.44	0
2	NDP	B	401	-	44,52,52	1.62	13 (29%)	55,80,80	1.62	6 (10%)
7	1GP	B	404[A]	3	9,9,9	0.83	0	10,12,12	1.88	3 (30%)
7	1GP	B	404[B]	3,4	9,9,9	0.83	0	10,12,12	1.96	4 (40%)
6	EDO	B	405	-	3,3,3	0.49	0	2,2,2	0.26	0
6	EDO	B	406	-	3,3,3	0.76	0	2,2,2	0.73	0
6	EDO	B	407	-	3,3,3	0.43	0	2,2,2	0.66	0

Mol	Type	Chain	Res	Link	Bond lengths			Bond angles		
					Counts	RMSZ	# Z > 2	Counts	RMSZ	# Z > 2
6	EDO	B	408	-	3,3,3	0.35	0	2,2,2	0.31	0
2	NDP	C	401	-	44,52,52	1.11	4 (9%)	55,80,80	1.65	8 (14%)
5	13P	C	404	3,4	9,9,9	0.87	0	10,12,12	1.47	2 (20%)
6	EDO	C	405	-	3,3,3	0.49	0	2,2,2	0.38	0
6	EDO	C	406	-	3,3,3	0.53	0	2,2,2	0.34	0
6	EDO	C	407	-	3,3,3	0.30	0	2,2,2	0.85	0
2	NDP	D	401	-	44,52,52	1.31	4 (9%)	55,80,80	1.57	5 (9%)
5	13P	D	404	3,4	9,9,9	0.50	0	10,12,12	1.59	3 (30%)
6	EDO	D	405	-	3,3,3	0.63	0	2,2,2	0.16	0
6	EDO	D	406	-	3,3,3	0.51	0	2,2,2	0.32	0
6	EDO	D	407	-	3,3,3	0.46	0	2,2,2	0.21	0
6	EDO	D	408	-	3,3,3	0.49	0	2,2,2	0.49	0

In the following table, the Chirals column lists the number of chiral outliers, the number of chiral centers analysed, the number of these observed in the model and the number defined in the chemical component dictionary. Similar counts are reported in the Torsion and Rings columns. '-' means no outliers of that kind were identified.

Mol	Type	Chain	Res	Link	Chirals	Torsions	Rings
2	NDP	A	401	-	-	0/30/77/77	0/5/5/5
5	13P	A	404	3,4	-	0/7/8/8	0/0/0/0
6	EDO	A	405	-	-	0/1/1/1	0/0/0/0
6	EDO	A	406	-	-	0/1/1/1	0/0/0/0
6	EDO	A	407	-	-	0/1/1/1	0/0/0/0
6	EDO	A	408	-	-	0/1/1/1	0/0/0/0
6	EDO	A	409	-	-	0/1/1/1	0/0/0/0
6	EDO	A	410	-	-	0/1/1/1	0/0/0/0
6	EDO	A	411	-	-	0/1/1/1	0/0/0/0
6	EDO	A	412	-	-	0/1/1/1	0/0/0/0
2	NDP	B	401	-	-	0/30/77/77	0/5/5/5
7	1GP	B	404[A]	3	-	0/8/8/8	0/0/0/0
7	1GP	B	404[B]	3,4	-	0/8/8/8	0/0/0/0
6	EDO	B	405	-	-	0/1/1/1	0/0/0/0
6	EDO	B	406	-	-	0/1/1/1	0/0/0/0
6	EDO	B	407	-	-	0/1/1/1	0/0/0/0
6	EDO	B	408	-	-	0/1/1/1	0/0/0/0
2	NDP	C	401	-	-	0/30/77/77	0/5/5/5
5	13P	C	404	3,4	-	0/7/8/8	0/0/0/0
6	EDO	C	405	-	-	0/1/1/1	0/0/0/0
6	EDO	C	406	-	-	0/1/1/1	0/0/0/0
6	EDO	C	407	-	-	0/1/1/1	0/0/0/0
2	NDP	D	401	-	-	0/30/77/77	0/5/5/5

Continued on next page...

Continued from previous page...

Mol	Type	Chain	Res	Link	Chirals	Torsions	Rings
5	13P	D	404	3,4	-	0/7/8/8	0/0/0/0
6	EDO	D	405	-	-	0/1/1/1	0/0/0/0
6	EDO	D	406	-	-	0/1/1/1	0/0/0/0
6	EDO	D	407	-	-	0/1/1/1	0/0/0/0
6	EDO	D	408	-	-	0/1/1/1	0/0/0/0

All (28) bond length outliers are listed below:

Mol	Chain	Res	Type	Atoms	Z	Observed(Å)	Ideal(Å)
2	A	401	NDP	C2N-N1N	-3.40	1.31	1.37
2	D	401	NDP	C2N-N1N	-3.39	1.31	1.37
2	B	401	NDP	P2B-O3X	-3.27	1.43	1.54
2	B	401	NDP	P2B-O2X	-3.12	1.44	1.54
2	B	401	NDP	PA-O2A	-2.98	1.42	1.55
2	B	401	NDP	C2N-N1N	-2.84	1.32	1.37
2	B	401	NDP	P2B-O1X	-2.34	1.43	1.50
2	C	401	NDP	C2N-N1N	-2.31	1.33	1.37
2	B	401	NDP	PA-O1A	-2.28	1.43	1.51
2	A	401	NDP	PA-O2A	-2.23	1.45	1.55
2	B	401	NDP	C5A-N7A	-2.17	1.31	1.39
2	B	401	NDP	O4D-C4D	-2.15	1.40	1.45
2	D	401	NDP	P2B-O3X	-2.14	1.47	1.54
2	B	401	NDP	C2D-C3D	-2.08	1.47	1.53
2	A	401	NDP	C4A-N3A	-2.08	1.32	1.35
2	A	401	NDP	P2B-O2X	-2.06	1.47	1.54
2	B	401	NDP	PN-O2N	-2.06	1.46	1.55
2	C	401	NDP	O4B-C4B	-2.03	1.40	1.45
2	B	401	NDP	C4A-N3A	-2.01	1.32	1.35
2	B	401	NDP	C5A-C4A	2.14	1.45	1.40
2	C	401	NDP	C5A-C4A	2.24	1.45	1.40
5	A	404	13P	O2-C2	2.36	1.25	1.21
2	D	401	NDP	C5A-C4A	2.41	1.45	1.40
2	A	401	NDP	C5A-C4A	2.50	1.46	1.40
2	D	401	NDP	C6N-C5N	2.69	1.38	1.33
2	B	401	NDP	C6N-C5N	2.95	1.38	1.33
2	C	401	NDP	C6N-C5N	3.12	1.39	1.33
2	A	401	NDP	C6N-C5N	3.29	1.39	1.33

All (41) bond angle outliers are listed below:

Mol	Chain	Res	Type	Atoms	Z	Observed(°)	Ideal(°)
2	A	401	NDP	N3A-C2A-N1A	-8.62	122.10	128.87

Continued on next page...

Continued from previous page...

Mol	Chain	Res	Type	Atoms	Z	Observed(°)	Ideal(°)
2	C	401	NDP	N3A-C2A-N1A	-7.79	122.75	128.87
2	D	401	NDP	N3A-C2A-N1A	-6.52	123.75	128.87
2	B	401	NDP	N3A-C2A-N1A	-6.00	124.16	128.87
7	B	404[B]	1GP	O1P-P-O2P	-4.04	96.92	107.08
7	B	404[A]	1GP	O1P-P-O2P	-4.04	96.92	107.08
2	A	401	NDP	C1B-N9A-C4A	-3.95	122.39	126.81
2	B	401	NDP	C1D-N1N-C2N	-3.73	114.37	120.85
2	C	401	NDP	C1B-N9A-C4A	-3.61	122.77	126.81
2	A	401	NDP	C1D-N1N-C2N	-3.57	114.65	120.85
2	D	401	NDP	C1B-N9A-C4A	-3.46	122.94	126.81
2	D	401	NDP	C1D-N1N-C2N	-3.29	115.13	120.85
2	D	401	NDP	O2X-P2B-O2B	-3.01	97.63	106.62
2	C	401	NDP	C3B-C2B-C1B	-2.79	97.29	102.63
2	A	401	NDP	O3B-C3B-C4B	-2.63	103.15	111.01
5	D	404	13P	O3P-P-O1	-2.52	99.37	106.72
2	D	401	NDP	O5D-C5D-C4D	-2.37	100.53	109.09
2	C	401	NDP	O2X-P2B-O2B	-2.30	99.75	106.62
2	B	401	NDP	O4D-C1D-N1N	-2.15	103.99	108.09
2	C	401	NDP	C1D-N1N-C2N	-2.14	117.12	120.85
2	A	401	NDP	O2B-P2B-O1X	-2.13	102.40	107.48
5	A	404	13P	O2P-P-O1	-2.10	100.59	106.72
5	D	404	13P	O1-P-O1P	-2.01	102.02	107.08
5	C	404	13P	O1-P-O1P	-2.01	102.03	107.08
2	C	401	NDP	C2A-N1A-C6A	2.14	122.58	118.77
5	D	404	13P	O3P-P-O2P	2.14	115.31	107.44
7	B	404[B]	1GP	O4P-P-O3P	2.18	115.43	107.44
7	B	404[A]	1GP	O4P-P-O3P	2.18	115.43	107.44
7	B	404[B]	1GP	O3P-P-O2P	2.22	117.86	110.63
7	B	404[A]	1GP	O3P-P-O2P	2.22	117.86	110.63
7	B	404[B]	1GP	O2-C3-C2	2.23	121.30	109.97
2	A	401	NDP	C2B-C3B-C4B	2.29	107.27	101.85
2	C	401	NDP	O2A-PA-O3	2.39	115.52	105.27
5	C	404	13P	O3P-P-O2P	2.50	116.61	107.44
2	B	401	NDP	O3X-P2B-O1X	2.64	119.24	110.63
2	B	401	NDP	C4N-C3N-C7N	2.72	125.58	118.19
2	A	401	NDP	O2A-PA-O3	2.91	117.75	105.27
2	A	401	NDP	C2A-N1A-C6A	2.98	124.08	118.77
2	B	401	NDP	P2B-O2B-C2B	3.03	129.33	121.56
2	A	401	NDP	O3X-P2B-O2X	3.11	118.87	107.44
2	C	401	NDP	O3X-P2B-O2X	3.29	119.51	107.44

There are no chirality outliers.

There are no torsion outliers.

There are no ring outliers.

15 monomers are involved in 25 short contacts:

Mol	Chain	Res	Type	Clashes	Symm-Clashes
2	A	401	NDP	2	0
6	A	405	EDO	1	0
6	A	406	EDO	2	0
6	A	407	EDO	2	0
6	A	412	EDO	1	0
2	B	401	NDP	3	0
7	B	404[A]	1GP	1	0
7	B	404[B]	1GP	1	0
6	B	406	EDO	1	0
6	B	407	EDO	2	0
6	B	408	EDO	2	0
2	C	401	NDP	1	0
6	C	407	EDO	1	0
2	D	401	NDP	4	0
6	D	406	EDO	1	0

5.7 Other polymers [i](#)

There are no such residues in this entry.

5.8 Polymer linkage issues [i](#)

There are no chain breaks in this entry.

6 Fit of model and data

6.1 Protein, DNA and RNA chains

In the following table, the column labelled ‘#RSRZ> 2’ contains the number (and percentage) of RSRZ outliers, followed by percent RSRZ outliers for the chain as percentile scores relative to all X-ray entries and entries of similar resolution. The OWAB column contains the minimum, median, 95th percentile and maximum values of the occupancy-weighted average B-factor per residue. The column labelled ‘Q< 0.9’ lists the number of (and percentage) of residues with an average occupancy less than 0.9.

Mol	Chain	Analysed	<RSRZ>	#RSRZ>2	OWAB(Å ²)	Q<0.9
1	A	332/368 (90%)	-0.05	8 (2%) 62 64	19, 30, 51, 101	21 (6%)
1	B	333/368 (90%)	-0.00	9 (2%) 58 60	19, 30, 54, 90	24 (7%)
1	C	330/368 (89%)	0.05	10 (3%) 54 57	19, 35, 56, 90	26 (7%)
1	D	331/368 (89%)	0.10	13 (3%) 43 45	20, 35, 62, 88	31 (9%)
All	All	1326/1472 (90%)	0.02	40 (3%) 54 57	19, 33, 57, 101	102 (7%)

All (40) RSRZ outliers are listed below:

Mol	Chain	Res	Type	RSRZ
1	B	61	ILE	7.4
1	A	61	ILE	6.2
1	D	57	ASN	5.8
1	B	58	ASN	5.5
1	C	58	ASN	5.1
1	B	57	ASN	4.7
1	B	56	LEU	4.7
1	A	54	GLU	4.6
1	C	66	TYR	3.9
1	C	59	LEU	3.9
1	D	55	ILE	3.8
1	A	57	ASN	3.7
1	B	59	LEU	3.6
1	D	58	ASN	3.5
1	C	65	LYS	3.4
1	A	58	ASN	3.4
1	C	56	LEU	3.4
1	D	242	ASN	3.4
1	D	56	LEU	3.1
1	B	242	ASN	2.9
1	A	65	LYS	2.8

Continued on next page...

Continued from previous page...

Mol	Chain	Res	Type	RSRZ
1	A	55	ILE	2.8
1	C	55	ILE	2.7
1	A	59	LEU	2.6
1	D	241	LEU	2.5
1	C	64	LYS	2.5
1	D	54	GLU	2.4
1	D	59	LEU	2.4
1	D	181	ILE	2.4
1	A	56	LEU	2.4
1	C	191	ASN	2.2
1	B	60	GLU	2.2
1	B	240	ASN	2.2
1	B	66	TYR	2.1
1	D	239	TYR	2.1
1	C	54	GLU	2.1
1	D	294	PHE	2.1
1	C	193	ASP	2.0
1	D	117	PRO	2.0
1	D	240	ASN	2.0

6.2 Non-standard residues in protein, DNA, RNA chains [i](#)

There are no non-standard protein/DNA/RNA residues in this entry.

6.3 Carbohydrates [i](#)

There are no carbohydrates in this entry.

6.4 Ligands [i](#)

In the following table, the Atoms column lists the number of modelled atoms in the group and the number defined in the chemical component dictionary. LLDF column lists the quality of electron density of the group with respect to its neighbouring residues in protein, DNA or RNA chains. The B-factors column lists the minimum, median, 95th percentile and maximum values of B factors of atoms in the group. The column labelled 'Q< 0.9' lists the number of atoms with occupancy less than 0.9.

Mol	Type	Chain	Res	Atoms	RSCC	RSR	LLDF	B-factors(Å ²)	Q<0.9
6	EDO	C	406	4/4	0.84	0.33	18.18	26,26,26,27	4
6	EDO	D	408	4/4	0.84	0.62	9.63	27,27,28,29	4

Continued on next page...

Continued from previous page...

Mol	Type	Chain	Res	Atoms	RSCC	RSR	LLDF	B-factors(Å ²)	Q<0.9
6	EDO	D	407	4/4	0.77	0.29	5.32	25,26,27,29	4
6	EDO	A	408	4/4	0.75	0.20	5.25	55,60,62,63	0
6	EDO	A	411	4/4	0.82	0.23	5.10	24,24,25,25	4
6	EDO	A	407	4/4	0.89	0.24	4.97	36,45,46,49	0
6	EDO	D	405	4/4	0.89	0.18	3.33	42,43,43,48	0
6	EDO	A	410	4/4	0.90	0.18	1.80	29,30,30,30	4
6	EDO	B	408	4/4	0.89	0.15	1.71	24,24,24,24	4
6	EDO	B	405	4/4	0.87	0.21	1.68	48,50,50,51	0
6	EDO	A	406	4/4	0.94	0.19	1.40	35,38,40,41	0
6	EDO	B	407	4/4	0.89	0.15	1.08	25,25,25,26	4
2	NDP	C	401	48/48	0.93	0.15	0.64	33,64,86,87	9
6	EDO	C	405	4/4	0.86	0.15	0.59	43,47,47,49	0
6	EDO	A	405	4/4	0.85	0.16	0.53	36,39,40,44	0
2	NDP	A	401	48/48	0.96	0.14	0.43	29,43,77,81	9
6	EDO	D	406	4/4	0.91	0.17	0.39	33,37,39,42	0
5	13P	D	404	10/10	0.94	0.16	0.25	37,48,50,54	10
7	1GP	B	404[B]	10/10	0.93	0.16	0.17	22,25,26,26	9
7	1GP	B	404[A]	10/10	0.93	0.16	0.17	22,25,26,26	9
5	13P	A	404	10/10	0.95	0.14	-0.02	40,50,54,59	0
2	NDP	B	401	48/48	0.95	0.12	-0.19	34,46,80,86	9
6	EDO	A	412	4/4	0.92	0.11	-0.34	22,23,23,23	0
6	EDO	C	407	4/4	0.94	0.15	-0.40	27,28,29,31	4
2	NDP	D	401	48/48	0.97	0.12	-0.54	36,43,72,76	9
5	13P	C	404	10/10	0.95	0.10	-0.81	41,46,49,52	0
6	EDO	B	406	4/4	0.97	0.12	-1.00	29,30,34,36	0
3	K	D	402	1/1	0.94	0.12	-1.24	43,43,43,43	0
3	K	B	402	1/1	0.98	0.10	-1.76	40,40,40,40	0
3	K	C	402	1/1	0.98	0.07	-2.06	43,43,43,43	0
3	K	A	402	1/1	0.98	0.08	-2.75	40,40,40,40	0
4	ZN	D	403	1/1	0.99	0.03	-6.19	58,58,58,58	0
4	ZN	C	403	1/1	0.99	0.05	-6.76	44,44,44,44	0
6	EDO	A	409	4/4	0.96	0.14	-	28,28,29,32	4
4	ZN	A	403	1/1	0.99	0.03	-	44,44,44,44	0
4	ZN	B	403	1/1	0.98	0.05	-	51,51,51,51	0

6.5 Other polymers ⓘ

There are no such residues in this entry.