



Full wwPDB X-ray Structure Validation Report ⓘ

Feb 1, 2016 – 05:37 AM GMT

PDB ID : 2RHR
Title : P94L actinorhodin ketoreductase mutant, with NADPH and Inhibitor Emodin
Authors : Korman, T.P.; Tsai, S.-C.
Deposited on : 2007-10-09
Resolution : 2.50 Å(reported)

This is a Full wwPDB X-ray Structure Validation Report for a publicly released PDB entry.
We welcome your comments at validation@mail.wwpdb.org
A user guide is available at
<http://wwpdb.org/validation/2016/XrayValidationReportHelp>
with specific help available everywhere you see the ⓘ symbol.

The following versions of software and data (see [references ⓘ](#)) were used in the production of this report:

MolProbity : 4.02b-467
Mogul : 1.7 (RC4), CSD as536be (2015)
Xtriage (Phenix) : 1.9-1692
EDS : rb-20026688
Percentile statistics : 20151230.v01 (using entries in the PDB archive December 30th 2015)
Refmac : 5.8.0135
CCP4 : 6.5.0
Ideal geometry (proteins) : Engh & Huber (2001)
Ideal geometry (DNA, RNA) : Parkinson et al. (1996)
Validation Pipeline (wwPDB-VP) : trunk26865

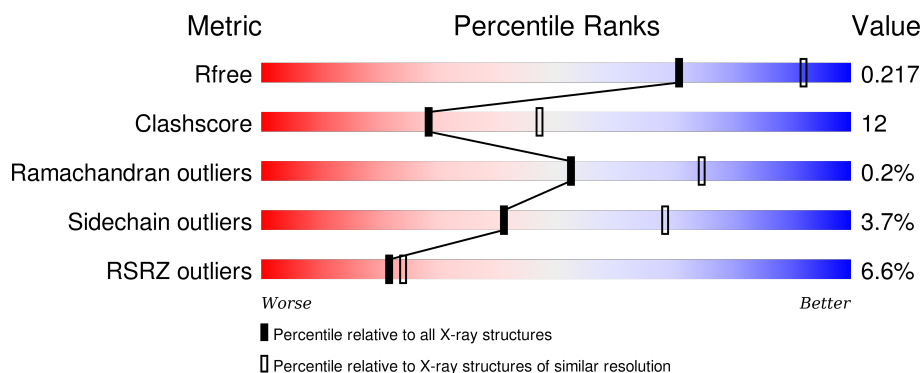
1 Overall quality at a glance

The following experimental techniques were used to determine the structure:

X-RAY DIFFRACTION


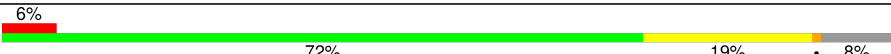
The reported resolution of this entry is 2.50 Å.

Percentile scores (ranging between 0-100) for global validation metrics of the entry are shown in the following graphic. The table shows the number of entries on which the scores are based.



Metric	Whole archive (#Entries)	Similar resolution (#Entries, resolution range(Å))
R_{free}	91344	3553 (2.50-2.50)
Clashscore	102246	4242 (2.50-2.50)
Ramachandran outliers	100387	4156 (2.50-2.50)
Sidechain outliers	100360	4158 (2.50-2.50)
RSRZ outliers	91569	3562 (2.50-2.50)

The table below summarises the geometric issues observed across the polymeric chains and their fit to the electron density. The red, orange, yellow and green segments on the lower bar indicate the fraction of residues that contain outliers for ≥ 3 , 2, 1 and 0 types of geometric quality criteria. A grey segment represents the fraction of residues that are not modelled. The numeric value for each fraction is indicated below the corresponding segment, with a dot representing fractions $\leq 5\%$. The upper red bar (where present) indicates the fraction of residues that have poor fit to the electron density. The numeric value is given above the bar.

Mol	Chain	Length	Quality of chain
1	A	277	 6% 71% 19% • 8%
1	B	277	 6% 72% 19% • 8%

2 Entry composition

There are 4 unique types of molecules in this entry. The entry contains 4046 atoms, of which 0 are hydrogens and 0 are deuteriums.

In the tables below, the ZeroOcc column contains the number of atoms modelled with zero occupancy, the AltConf column contains the number of residues with at least one atom in alternate conformation and the Trace column contains the number of residues modelled with at most 2 atoms.

- Molecule 1 is a protein called Actinorhodin Polyketide Ketoreductase.

Mol	Chain	Residues	Atoms					ZeroOcc	AltConf	Trace
1	B	256	Total	C	N	O	S	0	0	0
			1864	1159	338	359	8			
1	A	256	Total	C	N	O	S	0	0	0
			1877	1173	336	361	7			

There are 34 discrepancies between the modelled and reference sequences:

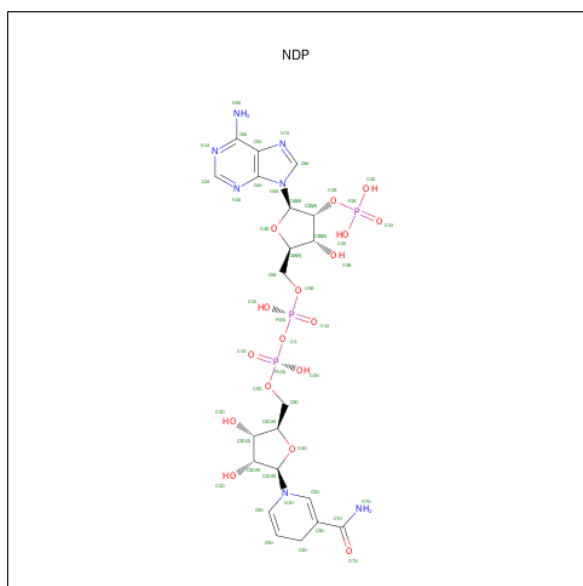
Chain	Residue	Modelled	Actual	Comment	Reference
B	-15	HIS	-	EXPRESSION TAG	UNP P16544
B	-14	HIS	-	EXPRESSION TAG	UNP P16544
B	-13	HIS	-	EXPRESSION TAG	UNP P16544
B	-12	HIS	-	EXPRESSION TAG	UNP P16544
B	-11	HIS	-	EXPRESSION TAG	UNP P16544
B	-10	HIS	-	EXPRESSION TAG	UNP P16544
B	-9	SER	-	EXPRESSION TAG	UNP P16544
B	-8	SER	-	EXPRESSION TAG	UNP P16544
B	-7	GLY	-	EXPRESSION TAG	UNP P16544
B	-6	LEU	-	EXPRESSION TAG	UNP P16544
B	-5	VAL	-	EXPRESSION TAG	UNP P16544
B	-4	PRO	-	EXPRESSION TAG	UNP P16544
B	-3	ARG	-	EXPRESSION TAG	UNP P16544
B	-2	GLY	-	EXPRESSION TAG	UNP P16544
B	-1	SER	-	EXPRESSION TAG	UNP P16544
B	0	HIS	-	EXPRESSION TAG	UNP P16544
B	94	LEU	PRO	ENGINEERED	UNP P16544
A	-15	HIS	-	EXPRESSION TAG	UNP P16544
A	-14	HIS	-	EXPRESSION TAG	UNP P16544
A	-13	HIS	-	EXPRESSION TAG	UNP P16544
A	-12	HIS	-	EXPRESSION TAG	UNP P16544
A	-11	HIS	-	EXPRESSION TAG	UNP P16544
A	-10	HIS	-	EXPRESSION TAG	UNP P16544
A	-9	SER	-	EXPRESSION TAG	UNP P16544
A	-8	SER	-	EXPRESSION TAG	UNP P16544

Continued on next page...

Continued from previous page...

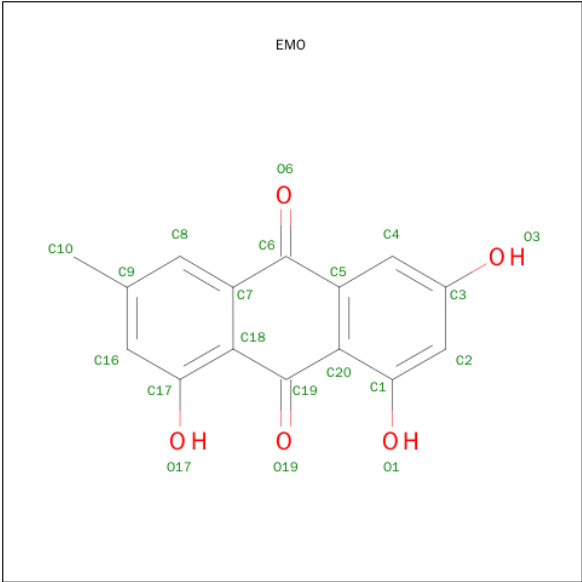
Chain	Residue	Modelled	Actual	Comment	Reference
A	-7	GLY	-	EXPRESSION TAG	UNP P16544
A	-6	LEU	-	EXPRESSION TAG	UNP P16544
A	-5	VAL	-	EXPRESSION TAG	UNP P16544
A	-4	PRO	-	EXPRESSION TAG	UNP P16544
A	-3	ARG	-	EXPRESSION TAG	UNP P16544
A	-2	GLY	-	EXPRESSION TAG	UNP P16544
A	-1	SER	-	EXPRESSION TAG	UNP P16544
A	0	HIS	-	EXPRESSION TAG	UNP P16544
A	94	LEU	PRO	ENGINEERED	UNP P16544

- Molecule 2 is NADPH DIHYDRO-NICOTINAMIDE-ADENINE-DINUCLEOTIDE PHOSPHATE (three-letter code: NDP) (formula: $C_{21}H_{30}N_7O_{17}P_3$).



Mol	Chain	Residues	Atoms					ZeroOcc	AltConf
2	B	1	Total 48	C 21	N 7	O 17	P 3	0	0
2	A	1	Total 48	C 21	N 7	O 17	P 3	0	0

- Molecule 3 is 3-METHYL-1,6,8-TRIHYDROXYANTHRAQUINONE (three-letter code: EMO) (formula: $C_{15}H_{10}O_5$).



Mol	Chain	Residues	Atoms			ZeroOcc	AltConf
3	A	1	Total	C	O	0	0
			20	15	5		
3	A	1	Total	C	O	0	0
			20	15	5		

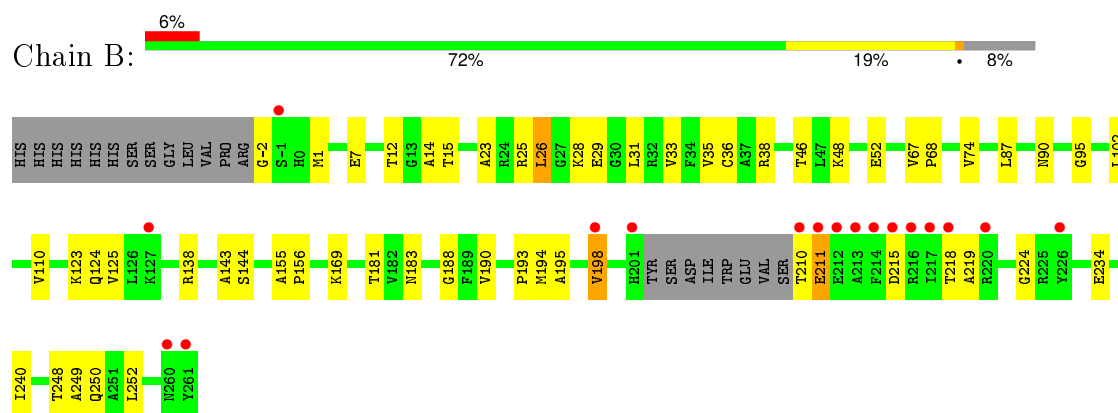
- Molecule 4 is water.

Mol	Chain	Residues	Atoms		ZeroOcc	AltConf
4	B	86	Total	O	0	0
			86	86		
4	A	83	Total	O	0	0
			83	83		

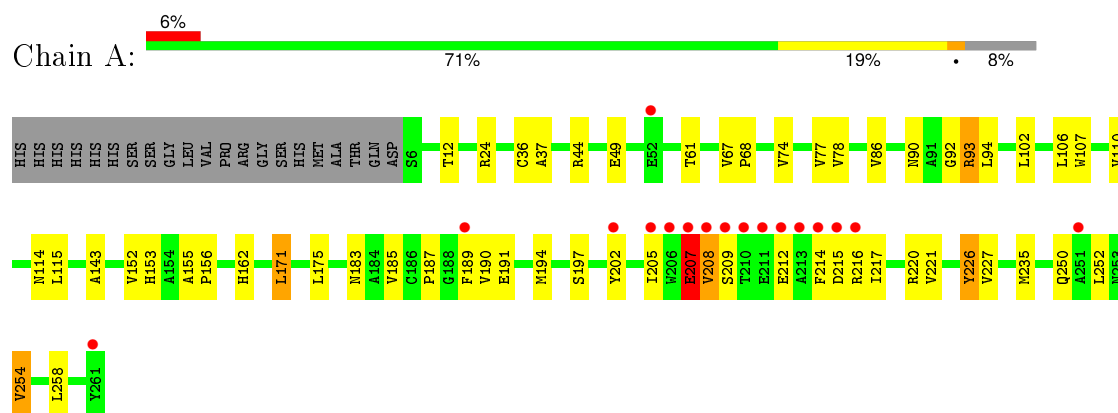
3 Residue-property plots [i](#)

These plots are drawn for all protein, RNA and DNA chains in the entry. The first graphic for a chain summarises the proportions of errors displayed in the second graphic. The second graphic shows the sequence view annotated by issues in geometry and electron density. Residues are color-coded according to the number of geometric quality criteria for which they contain at least one outlier: green = 0, yellow = 1, orange = 2 and red = 3 or more. A red dot above a residue indicates a poor fit to the electron density ($RSRZ > 2$). Stretches of 2 or more consecutive residues without any outlier are shown as a green connector. Residues present in the sample, but not in the model, are shown in grey.

• Molecule 1: Actinorhodin Polyketide Ketoreductase



• Molecule 1: Actinorhodin Polyketide Ketoreductase



4 Data and refinement statistics

Property	Value	Source
Space group	P 32 2 1	Depositor
Cell constants a, b, c, α , β , γ	104.78Å 104.78Å 123.36Å 90.00° 90.00° 120.00°	Depositor
Resolution (Å)	50.00 – 2.50 37.45 – 2.29	Depositor EDS
% Data completeness (in resolution range)	96.5 (50.00-2.50) 93.5 (37.45-2.29)	Depositor EDS
R_{merge}	0.09	Depositor
R_{sym}	(Not available)	Depositor
$\langle I/\sigma(I) \rangle$ ¹	3.41 (at 2.29Å)	Xtriage
Refinement program	CNS	Depositor
R, R_{free}	0.184 , 0.216 0.186 , 0.217	Depositor DCC
R_{free} test set	2643 reflections (9.93%)	DCC
Wilson B-factor (Å ²)	46.4	Xtriage
Anisotropy	0.336	Xtriage
Bulk solvent k_{sol} (e/Å ³), B_{sol} (Å ²)	0.37 , 42.9	EDS
Estimated twinning fraction	0.029 for -h,-k,l	Xtriage
L-test for twinning ²	$\langle L \rangle = 0.49$, $\langle L^2 \rangle = 0.32$	Xtriage
Outliers	0 of 35553 reflections	Xtriage
F_o, F_c correlation	0.96	EDS
Total number of atoms	4046	wwPDB-VP
Average B, all atoms (Å ²)	54.0	wwPDB-VP

Xtriage's analysis on translational NCS is as follows: *The largest off-origin peak in the Patterson function is 3.93% of the height of the origin peak. No significant pseudotranslation is detected.*

¹Intensities estimated from amplitudes.

²Theoretical values of $\langle |L| \rangle$, $\langle L^2 \rangle$ for acentric reflections are 0.5, 0.375 respectively for untwinned datasets, and 0.333, 0.2 for perfectly twinned datasets.

5 Model quality

5.1 Standard geometry

Bond lengths and bond angles in the following residue types are not validated in this section: NDP, EMO

The Z score for a bond length (or angle) is the number of standard deviations the observed value is removed from the expected value. A bond length (or angle) with $|Z| > 5$ is considered an outlier worth inspection. RMSZ is the root-mean-square of all Z scores of the bond lengths (or angles).

Mol	Chain	Bond lengths		Bond angles	
		RMSZ	$\# Z > 5$	RMSZ	$\# Z > 5$
1	A	0.35	0/1902	0.61	0/2582
1	B	0.34	0/1886	0.59	0/2556
All	All	0.35	0/3788	0.60	0/5138

Chiral center outliers are detected by calculating the chiral volume of a chiral center and verifying if the center is modelled as a planar moiety or with the opposite hand. A planarity outlier is detected by checking planarity of atoms in a peptide group, atoms in a mainchain group or atoms of a sidechain that are expected to be planar.

Mol	Chain	#Chirality outliers	#Planarity outliers
1	A	0	3

There are no bond length outliers.

There are no bond angle outliers.

There are no chirality outliers.

All (3) planarity outliers are listed below:

Mol	Chain	Res	Type	Group
1	A	207	GLU	Peptide
1	A	226	TYR	Peptide
1	A	254	VAL	Peptide

5.2 Too-close contacts

In the following table, the Non-H and H(model) columns list the number of non-hydrogen atoms and hydrogen atoms in the chain respectively. The H(added) column lists the number of hydrogen atoms added and optimized by MolProbity. The Clashes column lists the number of clashes within the asymmetric unit, whereas Symm-Clashes lists symmetry related clashes.

Mol	Chain	Non-H	H(model)	H(added)	Clashes	Symm-Clashes
1	A	1877	0	1900	49	0
1	B	1864	0	1891	41	0
2	A	48	0	26	5	0
2	B	48	0	26	6	0
3	A	40	0	16	5	0
4	A	83	0	0	0	0
4	B	86	0	0	1	0
All	All	4046	0	3859	90	0

The all-atom clashscore is defined as the number of clashes found per 1000 atoms (including hydrogen atoms). The all-atom clashscore for this structure is 12.

All (90) close contacts within the same asymmetric unit are listed below, sorted by their clash magnitude.

Atom-1	Atom-2	Interatomic distance (Å)	Clash overlap (Å)
1:B:210:THR:HG23	1:B:211:GLU:HG2	1.56	0.86
1:B:198:VAL:O	1:B:198:VAL:HG22	1.77	0.84
1:A:93:ARG:H	1:A:114:ASN:HD21	1.26	0.82
1:B:194:MET:O	1:B:198:VAL:HG12	1.81	0.81
1:B:195:ALA:HA	1:B:198:VAL:CG1	2.20	0.70
1:B:198:VAL:O	1:B:198:VAL:CG2	2.38	0.70
1:B:183:ASN:HD22	1:B:250:GLN:H	1.40	0.69
1:A:93:ARG:HD2	1:A:110:VAL:HG22	1.76	0.67
1:A:185:VAL:O	1:A:187:PRO:HD3	1.93	0.67
1:A:258:LEU:HD21	3:A:302:EMO:H8	1.78	0.66
1:A:93:ARG:N	1:A:114:ASN:HD21	1.95	0.64
1:A:217:ILE:HG23	3:A:302:EMO:H16	1.79	0.64
1:B:183:ASN:ND2	1:B:250:GLN:H	1.97	0.62
2:A:301:NDP:H41N	3:A:302:EMO:C4	2.30	0.61
1:A:212:GLU:O	1:A:216:ARG:HG3	2.01	0.61
1:A:93:ARG:HD3	1:A:94:LEU:O	2.02	0.59
1:A:202:TYR:HD2	1:A:217:ILE:HD11	1.67	0.59
1:B:-2:GLY:HA2	1:B:1:MET:SD	2.45	0.57
1:B:67:VAL:N	1:B:68:PRO:HD2	2.20	0.56
1:A:24:ARG:NH1	1:A:49:GLU:OE2	2.39	0.55
1:A:252:LEU:N	1:A:252:LEU:HD12	2.21	0.55
1:B:25:ARG:NH1	1:B:29:GLU:OE2	2.39	0.55
1:A:187:PRO:HB2	2:A:301:NDP:C5N	2.37	0.55
1:A:187:PRO:O	2:A:301:NDP:H5N	2.07	0.54
1:B:28:LYS:HB3	1:B:28:LYS:NZ	2.22	0.54
1:B:252:LEU:N	1:B:252:LEU:HD12	2.24	0.53
1:B:190:VAL:O	1:B:195:ALA:HB2	2.08	0.52

Continued on next page...

Continued from previous page...

Atom-1	Atom-2	Interatomic distance (Å)	Clash overlap (Å)
1:A:208:VAL:CG1	1:A:212:GLU:HB3	2.39	0.52
1:B:123:LYS:HE3	1:A:102:LEU:O	2.10	0.51
1:A:208:VAL:HG11	1:A:212:GLU:HB3	1.93	0.51
1:A:107:TRP:CE3	1:A:156:PRO:HB3	2.45	0.51
1:A:74:VAL:O	1:A:77:VAL:HG12	2.11	0.51
1:B:90:ASN:OD1	2:B:301:NDP:H4D	2.12	0.50
1:A:44:ARG:HG3	1:A:44:ARG:HH11	1.76	0.50
1:A:214:PHE:HE2	1:A:226:TYR:CE2	2.30	0.49
1:B:38:ARG:HB2	2:B:301:NDP:O1X	2.11	0.49
1:A:207:GLU:O	1:A:208:VAL:O	2.30	0.49
1:A:183:ASN:HD22	1:A:250:GLN:H	1.61	0.49
1:A:143:ALA:O	2:A:301:NDP:H6N	2.14	0.48
1:A:191:GLU:HB2	1:A:226:TYR:CG	2.48	0.48
1:B:195:ALA:HA	1:B:198:VAL:HG12	1.94	0.48
1:B:87:LEU:HD13	1:B:125:VAL:HG21	1.95	0.48
1:A:217:ILE:O	1:A:220:ARG:HG2	2.15	0.47
1:A:205:ILE:HD13	1:A:205:ILE:HA	1.80	0.47
1:B:12:THR:O	1:B:90:ASN:HB3	2.15	0.46
1:A:44:ARG:NH1	1:A:44:ARG:HG3	2.30	0.46
1:B:138:ARG:HD3	1:B:181:THR:OG1	2.15	0.46
2:A:301:NDP:H41N	3:A:302:EMO:C3	2.46	0.46
1:A:208:VAL:HB	1:A:212:GLU:CB	2.45	0.46
1:B:48:LYS:O	1:B:52:GLU:HG3	2.16	0.46
1:A:190:VAL:HG13	1:A:227:VAL:O	2.15	0.46
1:B:28:LYS:CB	1:B:28:LYS:NZ	2.78	0.46
1:A:189:PHE:CD1	1:A:221:VAL:HG21	2.51	0.46
1:A:155:ALA:N	1:A:156:PRO:HD2	2.31	0.45
1:B:143:ALA:O	2:B:301:NDP:H6N	2.16	0.45
1:B:74:VAL:HG21	1:B:124:GLN:HB3	1.97	0.45
1:A:194:MET:O	1:A:197:SER:HB3	2.17	0.45
1:B:188:GLY:O	2:B:301:NDP:H42N	2.16	0.45
1:B:14:ALA:HB3	1:B:35:VAL:HB	1.99	0.45
1:A:67:VAL:N	1:A:68:PRO:HD2	2.31	0.45
1:A:235:MET:SD	1:A:254:VAL:HG22	2.58	0.44
1:B:155:ALA:N	1:B:156:PRO:HD2	2.33	0.43
1:A:190:VAL:HA	1:A:227:VAL:O	2.18	0.43
1:A:77:VAL:HG13	1:A:78:VAL:N	2.34	0.43
1:B:23:ALA:HB1	1:B:33:VAL:HG11	2.01	0.43
1:B:169:LYS:NZ	1:A:162:HIS:HE1	2.16	0.43
1:A:191:GLU:HB2	1:A:226:TYR:CD2	2.54	0.43
1:A:205:ILE:CG2	1:A:205:ILE:O	2.66	0.43

Continued on next page...

Continued from previous page...

Atom-1	Atom-2	Interatomic distance (Å)	Clash overlap (Å)
1:A:93:ARG:H	1:A:114:ASN:ND2	2.06	0.42
1:B:218:THR:O	1:B:224:GLY:HA2	2.19	0.42
1:B:95:GLY:HA3	1:B:110:VAL:HG21	2.02	0.42
1:B:123:LYS:NZ	4:B:357:HOH:O	2.52	0.42
1:A:12:THR:O	1:A:90:ASN:HB3	2.20	0.42
1:A:258:LEU:CD2	3:A:302:EMO:H8	2.48	0.42
1:A:208:VAL:HB	1:A:212:GLU:HB2	2.02	0.41
1:B:15:THR:HA	1:B:46:THR:OG1	2.20	0.41
1:A:171:LEU:HD22	1:A:175:LEU:HG	2.03	0.41
1:A:92:GLY:HA2	1:A:114:ASN:ND2	2.36	0.41
1:A:189:PHE:CZ	1:A:226:TYR:CE1	3.08	0.41
1:A:152:VAL:O	1:A:153:HIS:HB2	2.20	0.41
1:B:7:GLU:HB2	1:B:31:LEU:HG	2.02	0.41
1:B:195:ALA:O	1:B:198:VAL:HG13	2.21	0.41
1:B:248:THR:O	1:B:249:ALA:HB3	2.20	0.41
1:B:26:LEU:HD11	1:B:240:ILE:HD13	2.03	0.41
1:A:37:ALA:O	1:A:61:THR:HA	2.21	0.41
1:B:144:SER:HB2	2:B:301:NDP:H6N	2.03	0.41
1:A:208:VAL:HB	1:A:212:GLU:HB3	2.04	0.40
1:B:25:ARG:HH21	1:B:234:GLU:CD	2.25	0.40
1:B:193:PRO:HD2	2:B:301:NDP:O2A	2.22	0.40
1:B:215:ASP:O	1:B:219:ALA:HB2	2.21	0.40

There are no symmetry-related clashes.

5.3 Torsion angles [i](#)

5.3.1 Protein backbone [i](#)

In the following table, the Percentiles column shows the percent Ramachandran outliers of the chain as a percentile score with respect to all X-ray entries followed by that with respect to entries of similar resolution.

The Analysed column shows the number of residues for which the backbone conformation was analysed, and the total number of residues.

Mol	Chain	Analysed	Favoured	Allowed	Outliers	Percentiles	
1	A	254/277 (92%)	234 (92%)	19 (8%)	1 (0%)	39	61
1	B	252/277 (91%)	242 (96%)	10 (4%)	0	100	100
All	All	506/554 (91%)	476 (94%)	29 (6%)	1 (0%)	52	75

All (1) Ramachandran outliers are listed below:

Mol	Chain	Res	Type
1	A	208	VAL

5.3.2 Protein sidechains ⓘ

In the following table, the Percentiles column shows the percent sidechain outliers of the chain as a percentile score with respect to all X-ray entries followed by that with respect to entries of similar resolution.

The Analysed column shows the number of residues for which the sidechain conformation was analysed, and the total number of residues.

Mol	Chain	Analysed	Rotameric	Outliers	Percentiles	
1	A	191/209 (91%)	182 (95%)	9 (5%)	32	56
1	B	189/209 (90%)	184 (97%)	5 (3%)	54	81
All	All	380/418 (91%)	366 (96%)	14 (4%)	41	68

All (14) residues with a non-rotameric sidechain are listed below:

Mol	Chain	Res	Type
1	B	26	LEU
1	B	36	CYS
1	B	102	LEU
1	B	198	VAL
1	B	211	GLU
1	A	36	CYS
1	A	86	VAL
1	A	93	ARG
1	A	106	LEU
1	A	115	LEU
1	A	171	LEU
1	A	207	GLU
1	A	209	SER
1	A	215	ASP

Some sidechains can be flipped to improve hydrogen bonding and reduce clashes. All (11) such sidechains are listed below:

Mol	Chain	Res	Type
1	B	89	ASN
1	B	124	GLN

Continued on next page...

Continued from previous page...

Mol	Chain	Res	Type
1	B	162	HIS
1	B	183	ASN
1	B	201	HIS
1	B	228	GLN
1	A	89	ASN
1	A	114	ASN
1	A	162	HIS
1	A	183	ASN
1	A	228	GLN

5.3.3 RNA [i](#)

There are no RNA molecules in this entry.

5.4 Non-standard residues in protein, DNA, RNA chains [i](#)

There are no non-standard protein/DNA/RNA residues in this entry.

5.5 Carbohydrates [i](#)

There are no carbohydrates in this entry.

5.6 Ligand geometry [i](#)

4 ligands are modelled in this entry.

In the following table, the Counts columns list the number of bonds (or angles) for which Mogul statistics could be retrieved, the number of bonds (or angles) that are observed in the model and the number of bonds (or angles) that are defined in the chemical component dictionary. The Link column lists molecule types, if any, to which the group is linked. The Z score for a bond length (or angle) is the number of standard deviations the observed value is removed from the expected value. A bond length (or angle) with $|Z| > 2$ is considered an outlier worth inspection. RMSZ is the root-mean-square of all Z scores of the bond lengths (or angles).

Mol	Type	Chain	Res	Link	Bond lengths			Bond angles		
					Counts	RMSZ	$\# Z > 2$	Counts	RMSZ	$\# Z > 2$
2	NDP	A	301	-	42,52,52	1.30	4 (9%)	55,80,80	1.73	6 (10%)
3	EMO	A	302	-	22,22,22	3.28	12 (54%)	34,34,34	1.16	1 (2%)
3	EMO	A	303	-	22,22,22	3.50	13 (59%)	34,34,34	1.11	2 (5%)
2	NDP	B	301	-	42,52,52	1.30	5 (11%)	55,80,80	1.77	6 (10%)

In the following table, the Chirals column lists the number of chiral outliers, the number of chiral centers analysed, the number of these observed in the model and the number defined in the chemical component dictionary. Similar counts are reported in the Torsion and Rings columns. '-' means no outliers of that kind were identified.

Mol	Type	Chain	Res	Link	Chirals	Torsions	Rings
2	NDP	A	301	-	-	0/30/77/77	0/5/5/5
3	EMO	A	302	-	-	0/0/16/16	0/3/3/3
3	EMO	A	303	-	-	0/0/16/16	0/3/3/3
2	NDP	B	301	-	-	0/30/77/77	0/5/5/5

All (34) bond length outliers are listed below:

Mol	Chain	Res	Type	Atoms	Z	Observed(Å)	Ideal(Å)
2	B	301	NDP	C4N-C5N	-4.38	1.39	1.49
2	A	301	NDP	C4N-C5N	-4.37	1.39	1.49
2	B	301	NDP	C2N-C3N	2.02	1.39	1.34
3	A	302	EMO	C16-C9	2.15	1.42	1.38
3	A	303	EMO	O6-C6	2.23	1.26	1.22
2	B	301	NDP	O4B-C1B	2.33	1.44	1.41
3	A	303	EMO	C16-C9	2.42	1.43	1.38
2	A	301	NDP	O4B-C1B	2.43	1.44	1.41
3	A	302	EMO	C18-C17	2.56	1.46	1.41
3	A	302	EMO	C4-C5	2.66	1.44	1.39
3	A	302	EMO	C2-C3	3.02	1.43	1.39
3	A	303	EMO	C18-C17	3.11	1.46	1.41
2	A	301	NDP	P2B-O1X	3.12	1.61	1.51
2	B	301	NDP	P2B-O1X	3.15	1.61	1.51
2	A	301	NDP	C6N-C5N	3.23	1.39	1.33
2	B	301	NDP	C6N-C5N	3.25	1.39	1.33
3	A	302	EMO	C4-C3	3.25	1.44	1.39
3	A	303	EMO	C2-C3	3.61	1.44	1.39
3	A	303	EMO	C4-C3	3.85	1.45	1.39
3	A	302	EMO	C2-C1	3.95	1.44	1.38
3	A	303	EMO	C4-C5	4.02	1.46	1.39
3	A	302	EMO	C16-C17	4.14	1.44	1.38
3	A	303	EMO	C2-C1	4.47	1.45	1.38
3	A	303	EMO	C16-C17	4.54	1.45	1.38
3	A	302	EMO	C20-C1	4.89	1.50	1.41
3	A	303	EMO	C8-C9	4.90	1.47	1.38
3	A	303	EMO	C20-C1	4.90	1.50	1.41
3	A	302	EMO	C8-C9	4.93	1.47	1.38
3	A	302	EMO	C8-C7	5.45	1.48	1.39
3	A	303	EMO	C8-C7	5.55	1.48	1.39
3	A	303	EMO	C7-C18	6.05	1.50	1.41

Continued on next page...

Continued from previous page...

Mol	Chain	Res	Type	Atoms	Z	Observed(Å)	Ideal(Å)
3	A	302	EMO	C7-C18	6.15	1.50	1.41
3	A	302	EMO	C5-C20	6.23	1.50	1.41
3	A	303	EMO	C5-C20	6.51	1.51	1.41

All (15) bond angle outliers are listed below:

Mol	Chain	Res	Type	Atoms	Z	Observed(°)	Ideal(°)
2	B	301	NDP	N3A-C2A-N1A	-10.08	121.17	128.89
2	A	301	NDP	N3A-C2A-N1A	-9.80	121.39	128.89
2	B	301	NDP	PN-O3-PA	-3.45	123.05	132.73
2	A	301	NDP	PN-O3-PA	-3.32	123.40	132.73
2	A	301	NDP	C3N-C2N-N1N	-2.38	119.72	123.14
2	A	301	NDP	C3B-C2B-C1B	-2.31	98.26	102.73
2	B	301	NDP	C3N-C2N-N1N	-2.31	119.84	123.14
2	A	301	NDP	C4A-C5A-N7A	-2.21	107.45	109.48
2	B	301	NDP	C4A-C5A-N7A	-2.03	107.61	109.48
3	A	303	EMO	C16-C9-C8	2.00	120.64	118.08
3	A	303	EMO	C20-C19-C18	2.06	121.87	118.09
3	A	302	EMO	O1-C1-C20	2.09	125.15	121.10
2	B	301	NDP	O4D-C1D-N1N	2.21	112.73	108.07
2	B	301	NDP	C5N-C4N-C3N	3.09	121.02	112.52
2	A	301	NDP	C5N-C4N-C3N	3.17	121.24	112.52

There are no chirality outliers.

There are no torsion outliers.

There are no ring outliers.

3 monomers are involved in 14 short contacts:

Mol	Chain	Res	Type	Clashes	Symm-Clashes
2	A	301	NDP	5	0
3	A	302	EMO	5	0
2	B	301	NDP	6	0

5.7 Other polymers ⓘ

There are no such residues in this entry.

5.8 Polymer linkage issues

There are no chain breaks in this entry.

6 Fit of model and data ⓘ

6.1 Protein, DNA and RNA chains ⓘ

In the following table, the column labelled ‘#RSRZ> 2’ contains the number (and percentage) of RSRZ outliers, followed by percent RSRZ outliers for the chain as percentile scores relative to all X-ray entries and entries of similar resolution. The OWAB column contains the minimum, median, 95th percentile and maximum values of the occupancy-weighted average B-factor per residue. The column labelled ‘Q< 0.9’ lists the number of (and percentage) of residues with an average occupancy less than 0.9.

Mol	Chain	Analysed	<RSRZ>	#RSRZ>2	OWAB(Å ²)	Q<0.9
1	A	256/277 (92%)	0.12	17 (6%) 22 24	32, 49, 88, 115	0
1	B	256/277 (92%)	0.14	17 (6%) 22 24	32, 51, 90, 123	0
All	All	512/554 (92%)	0.13	34 (6%) 22 24	32, 50, 90, 123	0

All (34) RSRZ outliers are listed below:

Mol	Chain	Res	Type	RSRZ
1	B	210	THR	8.0
1	A	206	TRP	7.1
1	B	211	GLU	5.6
1	B	261	TYR	5.2
1	B	212	GLU	4.8
1	B	213	ALA	4.6
1	B	226	TYR	4.1
1	A	207	GLU	4.0
1	A	213	ALA	3.9
1	B	217	ILE	3.7
1	A	212	GLU	3.7
1	A	209	SER	3.6
1	A	214	PHE	3.6
1	A	205	ILE	3.6
1	A	216	ARG	3.5
1	A	202	TYR	3.4
1	B	201	HIS	3.2
1	A	208	VAL	3.1
1	B	260	ASN	3.1
1	B	214	PHE	2.9
1	A	215	ASP	2.8
1	A	261	TYR	2.8
1	B	215	ASP	2.7
1	B	216	ARG	2.5

Continued on next page...

Continued from previous page...

Mol	Chain	Res	Type	RSRZ
1	A	189	PHE	2.5
1	A	210	THR	2.3
1	B	198	VAL	2.3
1	B	218	THR	2.2
1	B	-1	SER	2.2
1	B	127	LYS	2.2
1	A	251	ALA	2.1
1	A	52	GLU	2.1
1	B	220	ARG	2.0
1	A	211	GLU	2.0

6.2 Non-standard residues in protein, DNA, RNA chains [i](#)

There are no non-standard protein/DNA/RNA residues in this entry.

6.3 Carbohydrates [i](#)

There are no carbohydrates in this entry.

6.4 Ligands [i](#)

In the following table, the Atoms column lists the number of modelled atoms in the group and the number defined in the chemical component dictionary. LLDF column lists the quality of electron density of the group with respect to its neighbouring residues in protein, DNA or RNA chains. The B-factors column lists the minimum, median, 95th percentile and maximum values of B factors of atoms in the group. The column labelled 'Q< 0.9' lists the number of atoms with occupancy less than 0.9.

Mol	Type	Chain	Res	Atoms	RSCC	RSR	LLDF	B-factors(\AA^2)	Q<0.9
3	EMO	A	302	20/20	0.90	0.20	0.11	57,63,67,67	0
2	NDP	A	301	48/48	0.98	0.16	0.08	33,39,43,47	0
3	EMO	A	303	20/20	0.87	0.18	-0.05	65,68,73,75	0
2	NDP	B	301	48/48	0.93	0.11	-0.90	63,69,73,75	0

6.5 Other polymers [i](#)

There are no such residues in this entry.