



wwPDB X-ray Structure Validation Summary Report ⓘ

Feb 1, 2016 – 12:41 PM GMT

PDB ID : 3RHW
Title : C. elegans glutamate-gated chloride channel (GluCl) in complex with Fab and ivermectin
Authors : Hibbs, R.E.; Gouaux, E.
Deposited on : 2011-04-12
Resolution : 3.26 Å(reported)

This is a wwPDB X-ray Structure Validation Summary Report for a publicly released PDB entry.
We welcome your comments at validation@mail.wwpdb.org
A user guide is available at
<http://wwpdb.org/validation/2016/XrayValidationReportHelp>
with specific help available everywhere you see the ⓘ symbol.

The following versions of software and data (see [references ⓘ](#)) were used in the production of this report:

MolProbity : 4.02b-467
Mogul : 1.7 (RC4), CSD as536be (2015)
Xtriage (Phenix) : 1.9-1692
EDS : rb-20026688
Percentile statistics : 20151230.v01 (using entries in the PDB archive December 30th 2015)
Refmac : 5.8.0135
CCP4 : 6.5.0
Ideal geometry (proteins) : Engh & Huber (2001)
Ideal geometry (DNA, RNA) : Parkinson et al. (1996)
Validation Pipeline (wwPDB-VP) : trunk26865

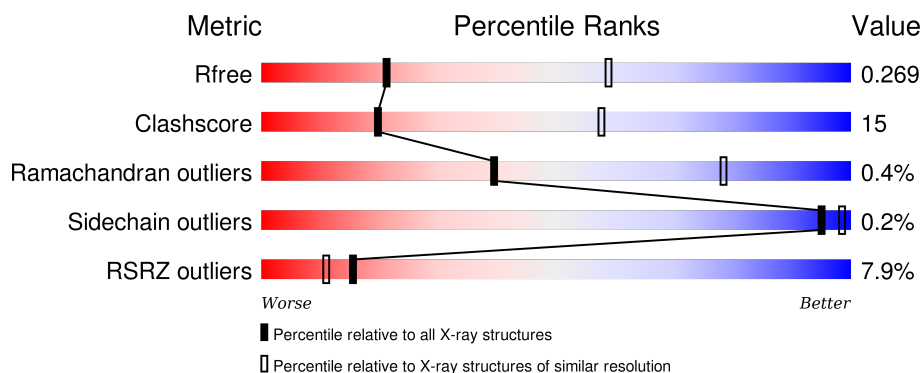
1 Overall quality at a glance

The following experimental techniques were used to determine the structure:

X-RAY DIFFRACTION

The reported resolution of this entry is 3.26 Å.

Percentile scores (ranging between 0-100) for global validation metrics of the entry are shown in the following graphic. The table shows the number of entries on which the scores are based.



Metric	Whole archive (#Entries)	Similar resolution (#Entries, resolution range(Å))
R_{free}	91344	1624 (3.32-3.20)
Clashscore	102246	1806 (3.32-3.20)
Ramachandran outliers	100387	1773 (3.32-3.20)
Sidechain outliers	100360	1771 (3.32-3.20)
RSRZ outliers	91569	1632 (3.32-3.20)

The table below summarises the geometric issues observed across the polymeric chains and their fit to the electron density. The red, orange, yellow and green segments on the lower bar indicate the fraction of residues that contain outliers for ≥ 3 , 2, 1 and 0 types of geometric quality criteria. A grey segment represents the fraction of residues that are not modelled. The numeric value for each fraction is indicated below the corresponding segment, with a dot representing fractions $\leq 5\%$. The upper red bar (where present) indicates the fraction of residues that have poor fit to the electron density. The numeric value is given above the bar.

Mol	Chain	Length	Quality of chain
1	A	347	<div> <div>3%</div> <div>64%</div> <div>33%</div> <div>.</div> </div>
1	B	347	<div> <div>5%</div> <div>64%</div> <div>34%</div> <div>.</div> </div>
1	C	347	<div> <div>5%</div> <div>64%</div> <div>33%</div> <div>.</div> </div>
1	D	347	<div> <div>3%</div> <div>64%</div> <div>34%</div> <div>.</div> </div>
1	E	347	<div> <div>3%</div> <div>64%</div> <div>34%</div> <div>.</div> </div>

Continued on next page...

Continued from previous page...

Mol	Chain	Length	Quality of chain
2	F	221	
2	G	221	
2	H	221	
2	I	221	
2	J	221	
3	K	210	
3	L	210	
3	M	210	
3	N	210	
3	O	210	

The following table lists non-polymeric compounds, carbohydrate monomers and non-standard residues in protein, DNA, RNA chains that are outliers for geometric or electron-density-fit criteria:

Mol	Type	Chain	Res	Chirality	Geometry	Clashes	Electron density
4	NAG	B	400	-	-	-	X
4	NAG	C	400	-	-	-	X
4	NAG	E	400	-	-	-	X
8	OCT	B	351	-	-	-	X
8	OCT	D	350	-	-	-	X

2 Entry composition

There are 9 unique types of molecules in this entry. The entry contains 29197 atoms, of which 0 are hydrogens and 0 are deuteriums.

In the tables below, the ZeroOcc column contains the number of atoms modelled with zero occupancy, the AltConf column contains the number of residues with at least one atom in alternate conformation and the Trace column contains the number of residues modelled with at most 2 atoms.

- Molecule 1 is a protein called Avermectin-sensitive glutamate-gated chloride channel GluCl alpha.

Mol	Chain	Residues	Atoms					ZeroOcc	AltConf	Trace
1	A	340	Total	C	N	O	S	0	0	0
			2716	1768	441	492	15			
1	B	340	Total	C	N	O	S	0	0	0
			2716	1768	441	492	15			
1	C	339	Total	C	N	O	S	0	0	0
			2706	1762	438	491	15			
1	D	340	Total	C	N	O	S	0	0	0
			2716	1768	441	492	15			
1	E	340	Total	C	N	O	S	0	0	0
			2716	1768	441	492	15			

There are 55 discrepancies between the modelled and reference sequences:

Chain	Residue	Modelled	Actual	Comment	Reference
A	303	ALA	-	LINKER	UNP O17793
A	304	GLY	-	LINKER	UNP O17793
A	305	THR	-	LINKER	UNP O17793
A	340	HIS	-	EXPRESSION TAG	UNP O17793
A	341	HIS	-	EXPRESSION TAG	UNP O17793
A	342	HIS	-	EXPRESSION TAG	UNP O17793
A	343	HIS	-	EXPRESSION TAG	UNP O17793
A	344	HIS	-	EXPRESSION TAG	UNP O17793
A	345	HIS	-	EXPRESSION TAG	UNP O17793
A	346	HIS	-	EXPRESSION TAG	UNP O17793
A	347	HIS	-	EXPRESSION TAG	UNP O17793
B	303	ALA	-	LINKER	UNP O17793
B	304	GLY	-	LINKER	UNP O17793
B	305	THR	-	LINKER	UNP O17793
B	340	HIS	-	EXPRESSION TAG	UNP O17793
B	341	HIS	-	EXPRESSION TAG	UNP O17793
B	342	HIS	-	EXPRESSION TAG	UNP O17793
B	343	HIS	-	EXPRESSION TAG	UNP O17793

Continued on next page...

Continued from previous page...

Chain	Residue	Modelled	Actual	Comment	Reference
B	344	HIS	-	EXPRESSION TAG	UNP O17793
B	345	HIS	-	EXPRESSION TAG	UNP O17793
B	346	HIS	-	EXPRESSION TAG	UNP O17793
B	347	HIS	-	EXPRESSION TAG	UNP O17793
C	303	ALA	-	LINKER	UNP O17793
C	304	GLY	-	LINKER	UNP O17793
C	305	THR	-	LINKER	UNP O17793
C	340	HIS	-	EXPRESSION TAG	UNP O17793
C	341	HIS	-	EXPRESSION TAG	UNP O17793
C	342	HIS	-	EXPRESSION TAG	UNP O17793
C	343	HIS	-	EXPRESSION TAG	UNP O17793
C	344	HIS	-	EXPRESSION TAG	UNP O17793
C	345	HIS	-	EXPRESSION TAG	UNP O17793
C	346	HIS	-	EXPRESSION TAG	UNP O17793
C	347	HIS	-	EXPRESSION TAG	UNP O17793
D	303	ALA	-	LINKER	UNP O17793
D	304	GLY	-	LINKER	UNP O17793
D	305	THR	-	LINKER	UNP O17793
D	340	HIS	-	EXPRESSION TAG	UNP O17793
D	341	HIS	-	EXPRESSION TAG	UNP O17793
D	342	HIS	-	EXPRESSION TAG	UNP O17793
D	343	HIS	-	EXPRESSION TAG	UNP O17793
D	344	HIS	-	EXPRESSION TAG	UNP O17793
D	345	HIS	-	EXPRESSION TAG	UNP O17793
D	346	HIS	-	EXPRESSION TAG	UNP O17793
D	347	HIS	-	EXPRESSION TAG	UNP O17793
E	303	ALA	-	LINKER	UNP O17793
E	304	GLY	-	LINKER	UNP O17793
E	305	THR	-	LINKER	UNP O17793
E	340	HIS	-	EXPRESSION TAG	UNP O17793
E	341	HIS	-	EXPRESSION TAG	UNP O17793
E	342	HIS	-	EXPRESSION TAG	UNP O17793
E	343	HIS	-	EXPRESSION TAG	UNP O17793
E	344	HIS	-	EXPRESSION TAG	UNP O17793
E	345	HIS	-	EXPRESSION TAG	UNP O17793
E	346	HIS	-	EXPRESSION TAG	UNP O17793
E	347	HIS	-	EXPRESSION TAG	UNP O17793

- Molecule 2 is a protein called Mouse monoclonal Fab fragment, heavy chain.

Mol	Chain	Residues	Atoms					ZeroOcc	AltConf	Trace
2	F	191	Total	C	N	O	S	0	0	0
			1478	942	240	289	7			

Continued on next page...

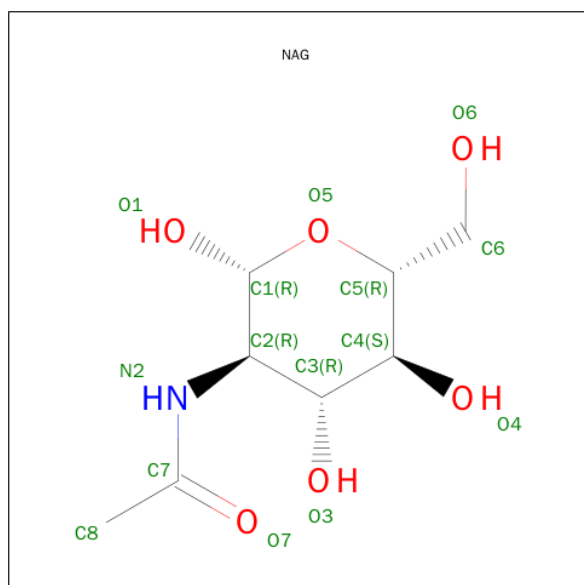
Continued from previous page...

Mol	Chain	Residues	Atoms					ZeroOcc	AltConf	Trace
2	G	200	Total	C	N	O	S	0	0	0
			1529	973	248	301	7			
2	H	221	Total	C	N	O	S	0	0	0
			1683	1067	273	335	8			
2	I	199	Total	C	N	O	S	0	0	0
			1525	969	247	301	8			
2	J	215	Total	C	N	O	S	0	0	0
			1639	1043	265	324	7			

- Molecule 3 is a protein called Mouse monoclonal Fab fragment, light chain.

Mol	Chain	Residues	Atoms					ZeroOcc	AltConf	Trace
3	K	199	Total	C	N	O	S	0	0	0
			1496	941	246	303	6			
3	L	210	Total	C	N	O	S	0	0	0
			1591	999	266	320	6			
3	M	210	Total	C	N	O	S	0	0	0
			1584	996	263	319	6			
3	N	158	Total	C	N	O	S	0	0	0
			1165	736	192	233	4			
3	O	195	Total	C	N	O	S	0	0	0
			1470	927	243	294	6			

- Molecule 4 is SUGAR (N-ACETYL-D-GLUCOSAMINE) (three-letter code: NAG) (formula: $C_8H_{15}NO_6$).

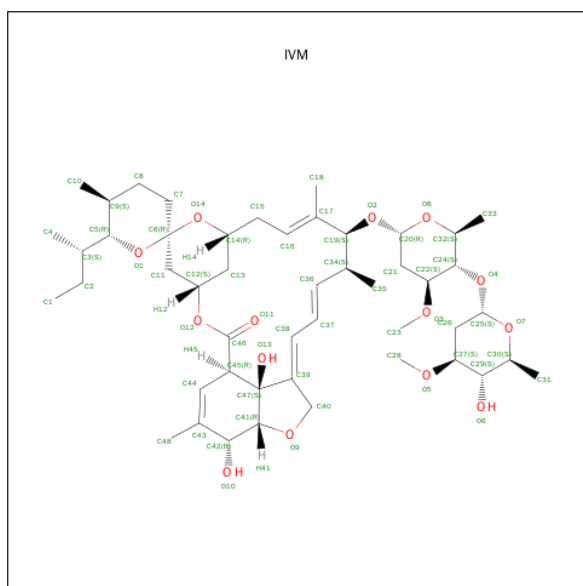


Mol	Chain	Residues	Atoms				ZeroOcc	AltConf
4	B	1	Total	C	N	O	0	0
			14	8	1	5		
4	C	1	Total	C	N	O	0	0
			14	8	1	5		
4	E	1	Total	C	N	O	0	0
			14	8	1	5		

- Molecule 5 is CHLORIDE ION (three-letter code: CL) (formula: Cl).

Mol	Chain	Residues	Atoms		ZeroOcc	AltConf
5	C	1	Total	Cl	0	0
			1	1		

- Molecule 6 is (2AE,4E,5'S,6S,6'R,7S,8E,11R,13R,15S,17AR,20R,20AR,20BS)-6'-[(2S)-BUTAN-2-YL]-20,20B-DIHYDROXY-5',6,8,19-TETRAMETHYL-17-OXO-3',4',5',6,6',10,11,14,15,17,17A,20,20A,20B-TETRADECAHYDRO-2H,7H-SPIRO[11,15-METHANOFURO[4,3,2-PQ][2,6]BENZODIOXACYCLOCTADECINE-13,2'-PYRAN]-7-YL 2,6-DIDEOXY-4-O-(2,6-DIDEOXY-3-O-METHYL-ALPHA-L-ARABINO-HEXOPYRANOSYL)-3-O-METHYL-ALPHA-L-ARABINO-HEXOPYRANOSIDE (three-letter code: IVM) (formula: C₄₈H₇₄O₁₄).



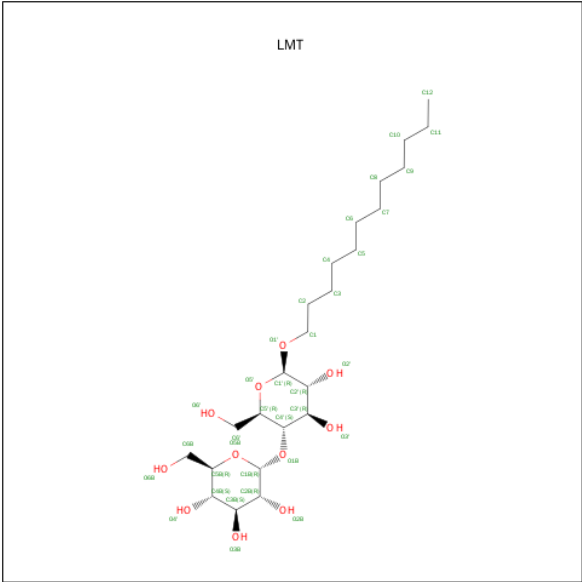
Mol	Chain	Residues	Atoms			ZeroOcc	AltConf
6	B	1	Total	C	O	0	0
			62	48	14		
6	B	1	Total	C	O	0	0
			62	48	14		
6	D	1	Total	C	O	0	0
			62	48	14		

Continued on next page...

Continued from previous page...

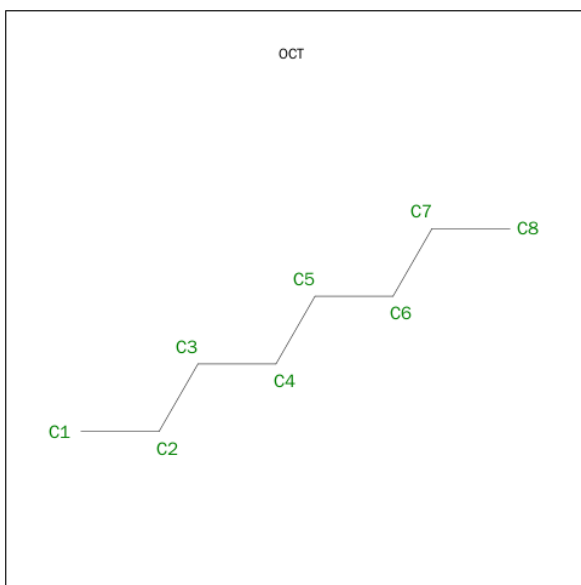
Mol	Chain	Residues	Atoms			ZeroOcc	AltConf
6	D	1	Total	C	O	0	0
			62	48	14		
6	A	1	Total	C	O	0	0
			62	48	14		

- Molecule 7 is DODECYL-BETA-D-MALTOSE (three-letter code: LMT) (formula: C₂₄H₄₆O₁₁).



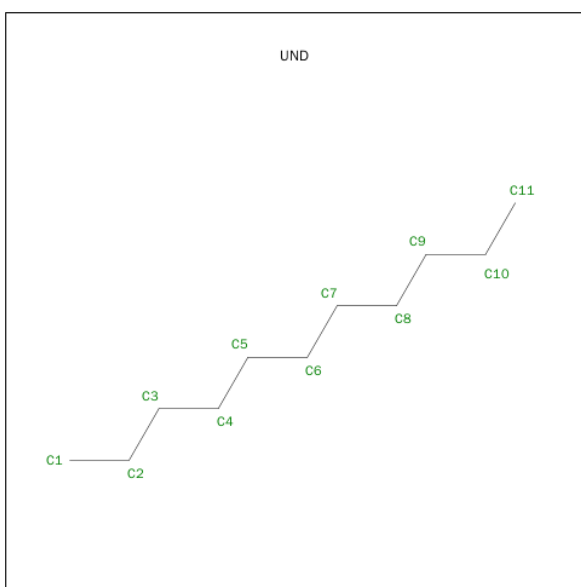
Mol	Chain	Residues	Atoms			ZeroOcc	AltConf
7	A	1	Total	C	O	0	0
			26	15	11		
7	B	1	Total	C	O	0	0
			26	15	11		
7	A	1	Total	C	O	0	0
			27	16	11		

- Molecule 8 is N-OCTANE (three-letter code: OCT) (formula: C₈H₁₈).



Mol	Chain	Residues	Atoms	ZeroOcc	AltConf
8	D	1	Total C 8 8	0	0
8	E	1	Total C 8 8	0	0
8	B	1	Total C 8 8	0	0

- Molecule 9 is UNDECANE (three-letter code: UND) (formula: $C_{11}H_{24}$).

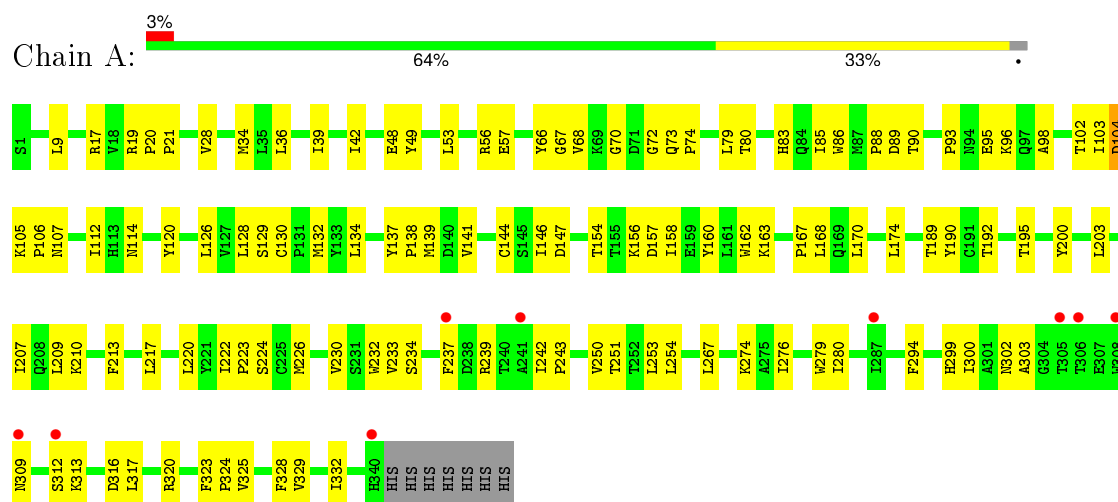


Mol	Chain	Residues	Atoms	ZeroOcc	AltConf
9	B	1	Total C 11 11	0	0

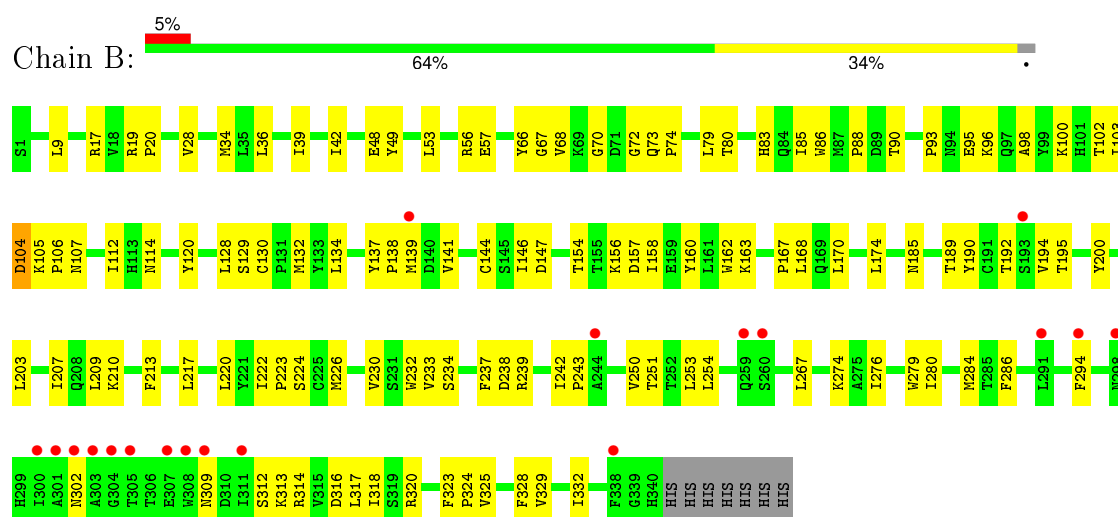
3 Residue-property plots

These plots are drawn for all protein, RNA and DNA chains in the entry. The first graphic for a chain summarises the proportions of errors displayed in the second graphic. The second graphic shows the sequence view annotated by issues in geometry and electron density. Residues are color-coded according to the number of geometric quality criteria for which they contain at least one outlier: green = 0, yellow = 1, orange = 2 and red = 3 or more. A red dot above a residue indicates a poor fit to the electron density ($\text{RSRZ} > 2$). Stretches of 2 or more consecutive residues without any outlier are shown as a green connector. Residues present in the sample, but not in the model, are shown in grey.

- Molecule 1: Avermectin-sensitive glutamate-gated chloride channel GluCl alpha

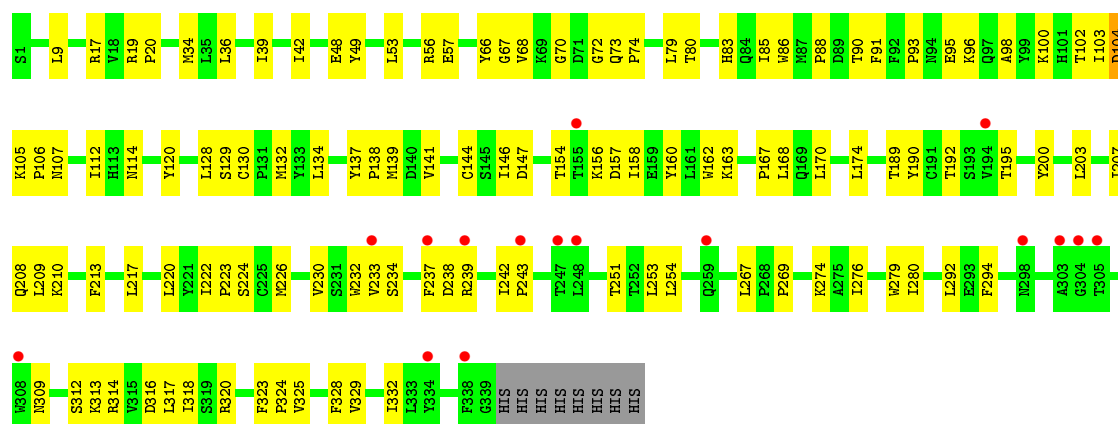


- Molecule 1: Avermectin-sensitive glutamate-gated chloride channel GluCl alpha

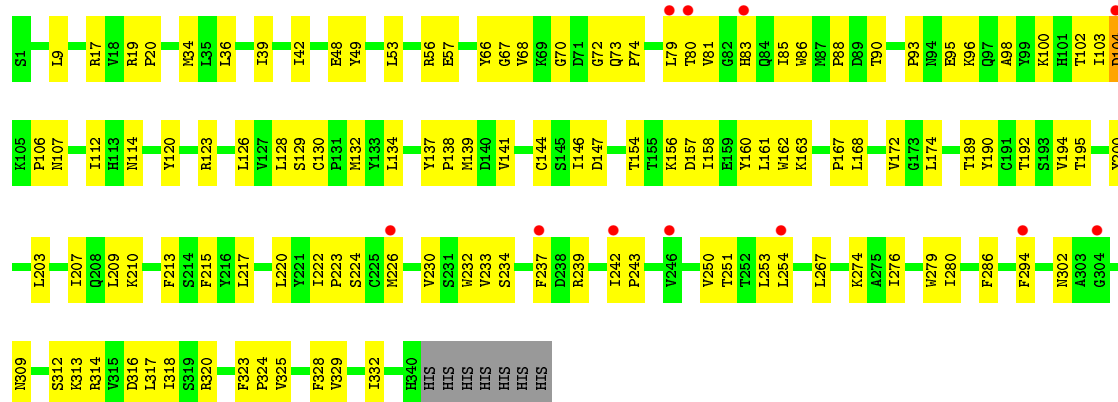


- Molecule 1: Avermectin-sensitive glutamate-gated chloride channel GluCl alpha

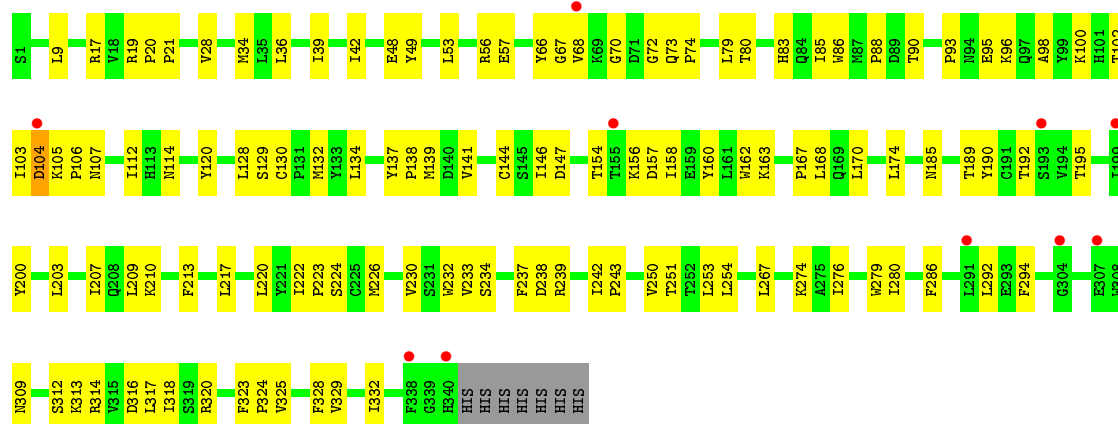




- Molecule 1: Avermectin-sensitive glutamate-gated chloride channel GluCl alpha

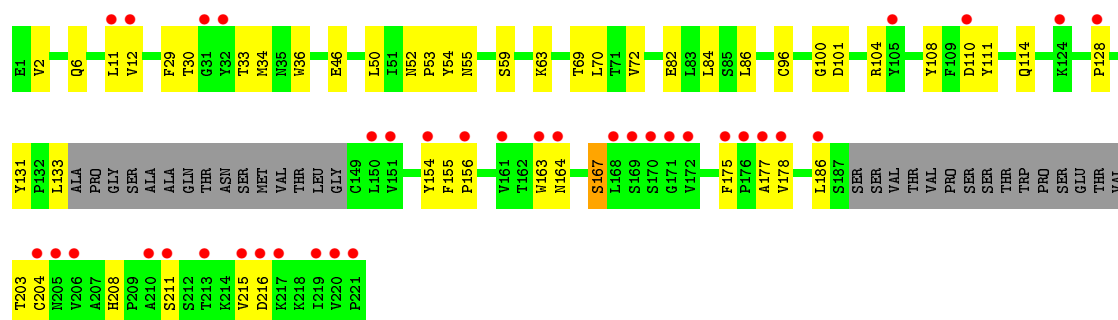


- Molecule 1: Avermectin-sensitive glutamate-gated chloride channel GluCl alpha

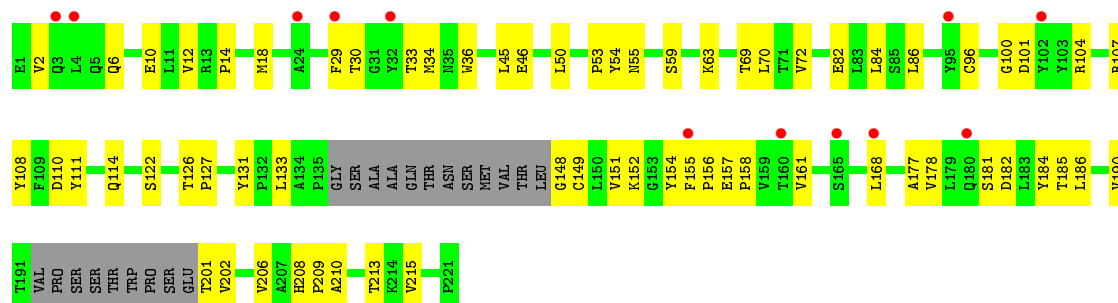


- Molecule 2: Mouse monoclonal Fab fragment, heavy chain

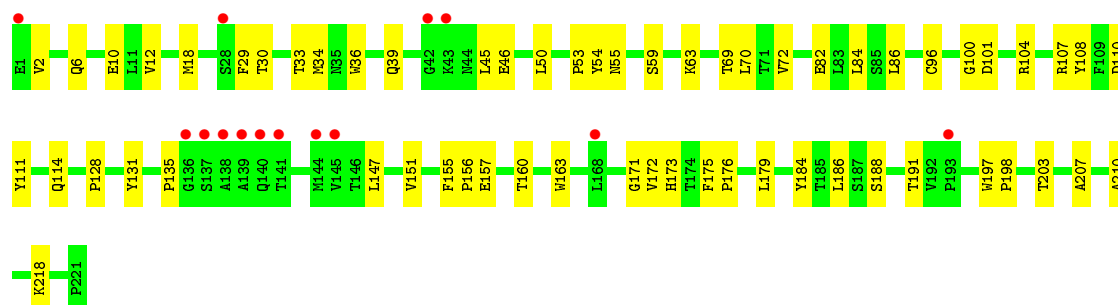




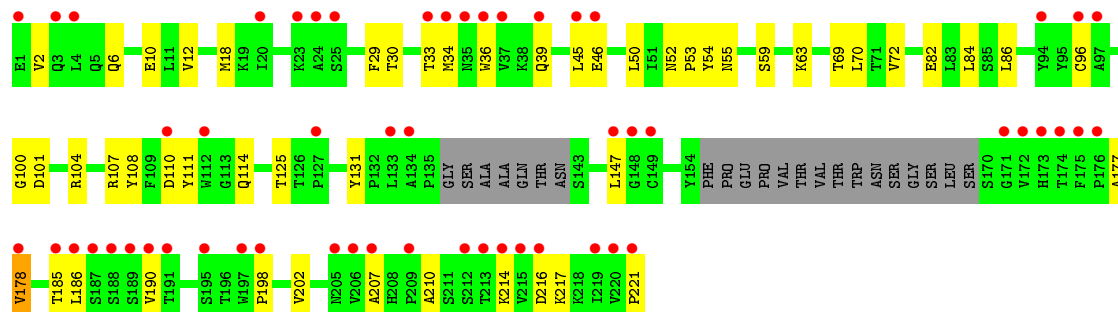
- Molecule 2: Mouse monoclonal Fab fragment, heavy chain



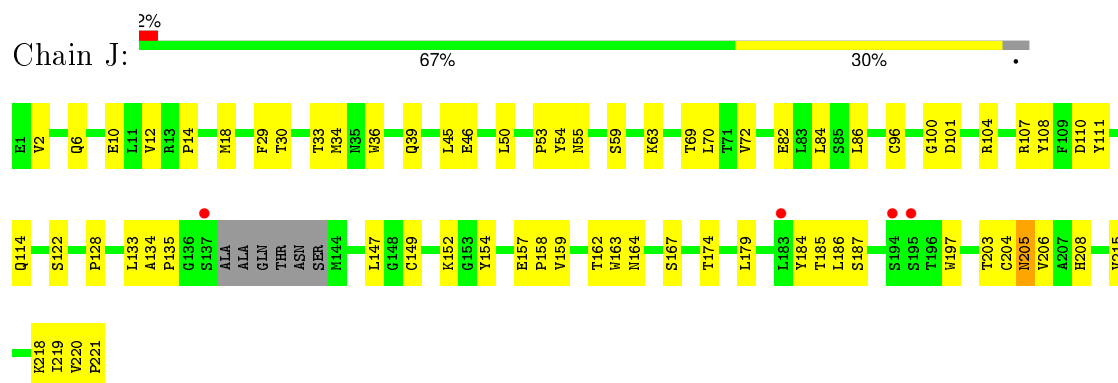
- Molecule 2: Mouse monoclonal Fab fragment, heavy chain



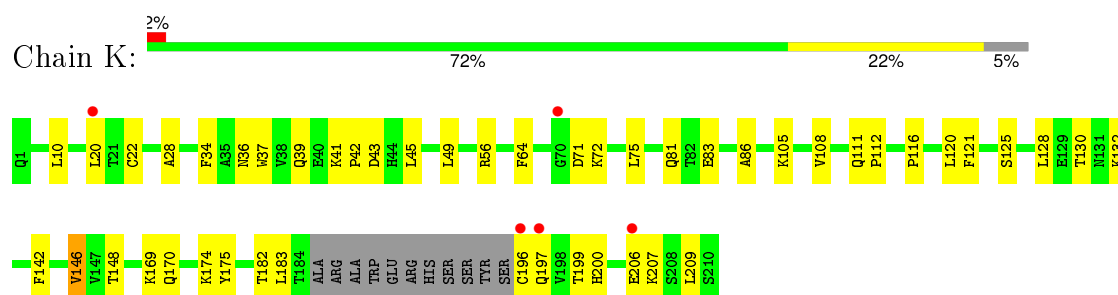
- Molecule 2: Mouse monoclonal Fab fragment, heavy chain



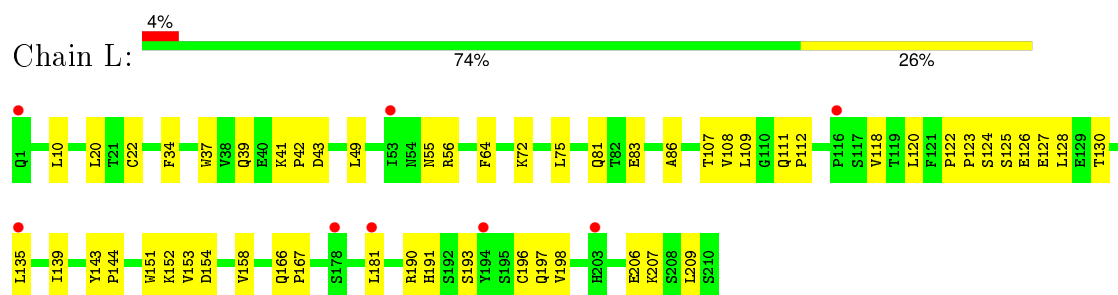
- Molecule 2: Mouse monoclonal Fab fragment, heavy chain



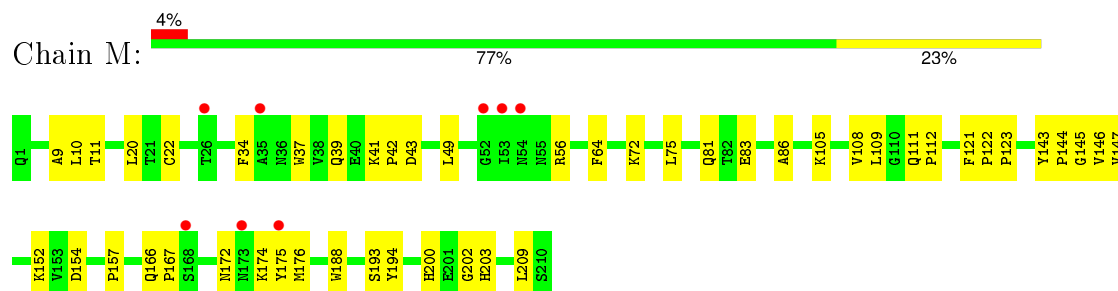
- Molecule 3: Mouse monoclonal Fab fragment, light chain



- Molecule 3: Mouse monoclonal Fab fragment, light chain

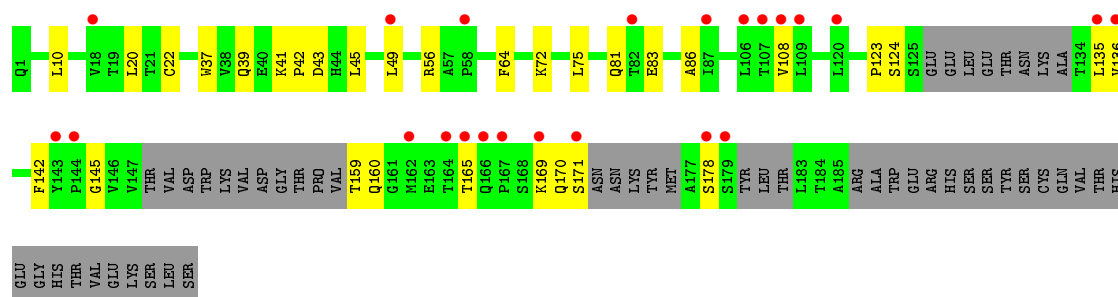


- Molecule 3: Mouse monoclonal Fab fragment, light chain

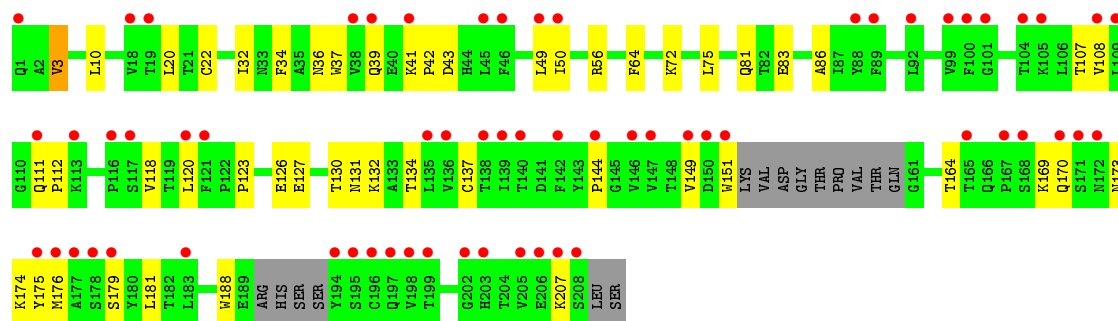


- Molecule 3: Mouse monoclonal Fab fragment, light chain





- Molecule 3: Mouse monoclonal Fab fragment, light chain



4 Data and refinement statistics

Property	Value	Source
Space group	P 43 21 2	Depositor
Cell constants a, b, c, α , β , γ	154.85Å 154.85Å 574.61Å 90.00° 90.00° 90.00°	Depositor
Resolution (Å)	109.50 – 3.26 109.50 – 3.26	Depositor EDS
% Data completeness (in resolution range)	93.7 (109.50-3.26) 99.7 (109.50-3.26)	Depositor EDS
R_{merge}	0.14	Depositor
R_{sym}	(Not available)	Depositor
$\langle I/\sigma(I) \rangle$ ¹	1.45 (at 3.26Å)	Xtriage
Refinement program	PHENIX (phenix.refine: 1.7_650)	Depositor
R, R_{free}	0.239 , 0.270 0.241 , 0.269	Depositor DCC
R_{free} test set	5474 reflections (5.25%)	DCC
Wilson B-factor (Å ²)	86.7	Xtriage
Anisotropy	0.050	Xtriage
Bulk solvent k_{sol} (e/Å ³), B_{sol} (Å ²)	0.31 , 63.6	EDS
Estimated twinning fraction	No twinning to report.	Xtriage
L-test for twinning ²	$\langle L \rangle = 0.47$, $\langle L^2 \rangle = 0.30$	Xtriage
Outliers	0 of 109728 reflections	Xtriage
F_o, F_c correlation	0.87	EDS
Total number of atoms	29197	wwPDB-VP
Average B, all atoms (Å ²)	87.0	wwPDB-VP

Xtriage's analysis on translational NCS is as follows: *The largest off-origin peak in the Patterson function is 1.63% of the height of the origin peak. No significant pseudotranslation is detected.*

¹Intensities estimated from amplitudes.

²Theoretical values of $\langle |L| \rangle$, $\langle L^2 \rangle$ for acentric reflections are 0.5, 0.375 respectively for untwinned datasets, and 0.333, 0.2 for perfectly twinned datasets.

5 Model quality [i](#)

5.1 Standard geometry [i](#)

Bond lengths and bond angles in the following residue types are not validated in this section: NAG, CL, IVM, LMT, UND, OCT

The Z score for a bond length (or angle) is the number of standard deviations the observed value is removed from the expected value. A bond length (or angle) with $|Z| > 5$ is considered an outlier worth inspection. RMSZ is the root-mean-square of all Z scores of the bond lengths (or angles).

Mol	Chain	Bond lengths		Bond angles	
		RMSZ	# Z >5	RMSZ	# Z >5
1	A	0.26	0/2789	0.42	0/3809
1	B	0.26	0/2789	0.42	0/3809
1	C	0.25	0/2778	0.42	0/3794
1	D	0.25	0/2789	0.42	0/3809
1	E	0.26	0/2789	0.42	0/3809
2	F	0.23	0/1517	0.41	0/2062
2	G	0.24	0/1569	0.44	0/2138
2	H	0.25	0/1729	0.43	0/2360
2	I	0.24	0/1564	0.42	0/2128
2	J	0.24	0/1684	0.43	0/2299
3	K	0.24	0/1529	0.43	0/2089
3	L	0.25	0/1629	0.45	0/2226
3	M	0.24	0/1622	0.43	0/2219
3	N	0.24	0/1188	0.44	0/1621
3	O	0.32	1/1504 (0.1%)	0.47	1/2056 (0.0%)
All	All	0.25	1/29469 (0.0%)	0.43	1/40228 (0.0%)

All (1) bond length outliers are listed below:

Mol	Chain	Res	Type	Atoms	Z	Observed(Å)	Ideal(Å)
3	O	3	VAL	CB-CG2	8.11	1.69	1.52

All (1) bond angle outliers are listed below:

Mol	Chain	Res	Type	Atoms	Z	Observed(°)	Ideal(°)
3	O	3	VAL	CG1-CB-CG2	7.33	122.63	110.90

There are no chirality outliers.

There are no planarity outliers.

5.2 Too-close contacts ⓘ

In the following table, the Non-H and H(model) columns list the number of non-hydrogen atoms and hydrogen atoms in the chain respectively. The H(added) column lists the number of hydrogen atoms added and optimized by MolProbity. The Clashes column lists the number of clashes within the asymmetric unit, whereas Symm-Clashes lists symmetry related clashes.

Mol	Chain	Non-H	H(model)	H(added)	Clashes	Symm-Clashes
1	A	2716	0	2709	109	0
1	B	2716	0	2708	109	0
1	C	2706	0	2701	109	0
1	D	2716	0	2709	109	0
1	E	2716	0	2708	105	0
2	F	1478	0	1432	39	0
2	G	1529	0	1478	49	0
2	H	1683	0	1632	46	0
2	I	1525	0	1485	42	0
2	J	1639	0	1588	48	0
3	K	1496	0	1458	34	0
3	L	1591	0	1542	38	0
3	M	1584	0	1531	33	0
3	N	1165	0	1142	22	0
3	O	1470	0	1412	41	0
4	B	14	0	13	1	0
4	C	14	0	13	1	0
4	E	14	0	13	1	0
5	C	1	0	0	0	0
6	A	62	0	74	1	0
6	B	124	0	148	3	0
6	D	124	0	148	5	0
7	A	53	0	52	12	0
7	B	26	0	25	4	0
8	B	8	0	18	2	0
8	D	8	0	18	2	0
8	E	8	0	18	2	0
9	B	11	0	24	0	0
All	All	29197	0	28799	861	0

The all-atom clashscore is defined as the number of clashes found per 1000 atoms (including hydrogen atoms). The all-atom clashscore for this structure is 15.

The worst 5 of 861 close contacts within the same asymmetric unit are listed below, sorted by their clash magnitude.

Atom-1	Atom-2	Interatomic distance (Å)	Clash overlap (Å)
1:A:90:THR:HG22	1:A:160:TYR:OH	1.62	1.00
1:D:90:THR:HG22	1:D:160:TYR:OH	1.63	0.99
2:F:208:HIS:HD2	2:F:211:SER:H	1.10	0.98
1:B:90:THR:HG22	1:B:160:TYR:OH	1.63	0.98
1:E:90:THR:HG22	1:E:160:TYR:OH	1.65	0.96

There are no symmetry-related clashes.

5.3 Torsion angles [i](#)

5.3.1 Protein backbone [i](#)

In the following table, the Percentiles column shows the percent Ramachandran outliers of the chain as a percentile score with respect to all X-ray entries followed by that with respect to entries of similar resolution.

The Analysed column shows the number of residues for which the backbone conformation was analysed, and the total number of residues.

Mol	Chain	Analysed	Favoured	Allowed	Outliers	Percentiles	
1	A	338/347 (97%)	321 (95%)	16 (5%)	1 (0%)	46	83
1	B	338/347 (97%)	320 (95%)	17 (5%)	1 (0%)	46	83
1	C	337/347 (97%)	320 (95%)	16 (5%)	1 (0%)	46	83
1	D	338/347 (97%)	321 (95%)	16 (5%)	1 (0%)	46	83
1	E	338/347 (97%)	322 (95%)	15 (4%)	1 (0%)	46	83
2	F	185/221 (84%)	171 (92%)	12 (6%)	2 (1%)	17	60
2	G	194/221 (88%)	176 (91%)	18 (9%)	0	100	100
2	H	219/221 (99%)	202 (92%)	17 (8%)	0	100	100
2	I	193/221 (87%)	181 (94%)	10 (5%)	2 (1%)	19	62
2	J	211/221 (96%)	199 (94%)	12 (6%)	0	100	100
3	K	195/210 (93%)	173 (89%)	21 (11%)	1 (0%)	34	75
3	L	208/210 (99%)	186 (89%)	20 (10%)	2 (1%)	19	62
3	M	208/210 (99%)	189 (91%)	19 (9%)	0	100	100
3	N	148/210 (70%)	131 (88%)	16 (11%)	1 (1%)	26	70
3	O	189/210 (90%)	166 (88%)	23 (12%)	0	100	100
All	All	3639/3890 (94%)	3378 (93%)	248 (7%)	13 (0%)	39	78

5 of 13 Ramachandran outliers are listed below:

Mol	Chain	Res	Type
2	I	190	VAL
1	A	68	VAL
1	B	68	VAL
1	C	68	VAL
1	D	68	VAL

5.3.2 Protein sidechains ⓘ

In the following table, the Percentiles column shows the percent sidechain outliers of the chain as a percentile score with respect to all X-ray entries followed by that with respect to entries of similar resolution.

The Analysed column shows the number of residues for which the sidechain conformation was analysed, and the total number of residues.

Mol	Chain	Analysed	Rotameric	Outliers	Percentiles	
1	A	307/316 (97%)	306 (100%)	1 (0%)	94	98
1	B	307/316 (97%)	306 (100%)	1 (0%)	94	98
1	C	306/316 (97%)	305 (100%)	1 (0%)	94	98
1	D	307/316 (97%)	306 (100%)	1 (0%)	94	98
1	E	307/316 (97%)	306 (100%)	1 (0%)	94	98
2	F	165/190 (87%)	165 (100%)	0	100	100
2	G	171/190 (90%)	170 (99%)	1 (1%)	90	96
2	H	190/190 (100%)	190 (100%)	0	100	100
2	I	172/190 (90%)	172 (100%)	0	100	100
2	J	185/190 (97%)	184 (100%)	1 (0%)	92	96
3	K	169/178 (95%)	169 (100%)	0	100	100
3	L	178/178 (100%)	178 (100%)	0	100	100
3	M	177/178 (99%)	177 (100%)	0	100	100
3	N	130/178 (73%)	130 (100%)	0	100	100
3	O	162/178 (91%)	161 (99%)	1 (1%)	90	96
All	All	3233/3420 (94%)	3225 (100%)	8 (0%)	95	98

5 of 8 residues with a non-rotameric sidechain are listed below:

Mol	Chain	Res	Type
1	D	104	ASP
3	O	3	VAL
2	G	45	LEU
1	C	104	ASP
1	E	104	ASP

Some sidechains can be flipped to improve hydrogen bonding and reduce clashes. 5 of 31 such sidechains are listed below:

Mol	Chain	Res	Type
2	F	208	HIS
2	G	180	GLN
3	N	166	GLN
2	G	5	GLN
2	H	5	GLN

5.3.3 RNA [i](#)

There are no RNA molecules in this entry.

5.4 Non-standard residues in protein, DNA, RNA chains [i](#)

There are no non-standard protein/DNA/RNA residues in this entry.

5.5 Carbohydrates [i](#)

There are no carbohydrates in this entry.

5.6 Ligand geometry [i](#)

Of 16 ligands modelled in this entry, 1 is monoatomic - leaving 15 for Mogul analysis.

In the following table, the Counts columns list the number of bonds (or angles) for which Mogul statistics could be retrieved, the number of bonds (or angles) that are observed in the model and the number of bonds (or angles) that are defined in the chemical component dictionary. The Link column lists molecule types, if any, to which the group is linked. The Z score for a bond length (or angle) is the number of standard deviations the observed value is removed from the expected value. A bond length (or angle) with $|Z| > 2$ is considered an outlier worth inspection. RMSZ is the root-mean-square of all Z scores of the bond lengths (or angles).

Mol	Type	Chain	Res	Link	Bond lengths			Bond angles		
					Counts	RMSZ	# Z > 2	Counts	RMSZ	# Z > 2
6	IVM	A	348	-	63,68,68	0.78	1 (1%)	72,102,102	1.60	12 (16%)
7	LMT	A	349	-	27,27,36	1.54	6 (22%)	38,38,47	2.08	13 (34%)
7	LMT	A	350	-	28,28,36	1.48	4 (14%)	39,39,47	1.32	6 (15%)
6	IVM	B	348	-	63,68,68	0.78	1 (1%)	72,102,102	1.58	13 (18%)
6	IVM	B	349	-	63,68,68	0.79	1 (1%)	72,102,102	1.59	12 (16%)
7	LMT	B	350	-	27,27,36	1.50	4 (14%)	38,38,47	1.52	8 (21%)
8	OCT	B	351	-	7,7,7	0.13	0	6,6,6	0.44	0
9	UND	B	352	-	10,10,10	0.41	0	9,9,9	0.43	0
4	NAG	B	400	1	14,14,15	0.55	0	15,19,21	1.83	2 (13%)
4	NAG	C	400	1	14,14,15	0.61	0	15,19,21	1.67	1 (6%)
6	IVM	D	348	-	63,68,68	0.78	1 (1%)	72,102,102	1.60	13 (18%)
6	IVM	D	349	-	63,68,68	0.78	1 (1%)	72,102,102	1.59	12 (16%)
8	OCT	D	350	-	7,7,7	0.17	0	6,6,6	0.36	0
8	OCT	E	348	-	7,7,7	0.14	0	6,6,6	0.47	0
4	NAG	E	400	1	14,14,15	1.42	1 (7%)	15,19,21	1.57	3 (20%)

In the following table, the Chirals column lists the number of chiral outliers, the number of chiral centers analysed, the number of these observed in the model and the number defined in the chemical component dictionary. Similar counts are reported in the Torsion and Rings columns. '-' means no outliers of that kind were identified.

Mol	Type	Chain	Res	Link	Chirals	Torsions	Rings
6	IVM	A	348	-	-	0/43/141/141	0/5/7/7
7	LMT	A	349	-	-	0/12/52/61	0/2/2/2
7	LMT	A	350	-	-	0/13/53/61	0/2/2/2
6	IVM	B	348	-	-	0/43/141/141	0/5/7/7
6	IVM	B	349	-	-	0/43/141/141	0/5/7/7
7	LMT	B	350	-	-	0/12/52/61	0/2/2/2
8	OCT	B	351	-	-	0/5/5/5	0/0/0/0
9	UND	B	352	-	-	0/8/8/8	0/0/0/0
4	NAG	B	400	1	-	0/6/23/26	0/1/1/1
4	NAG	C	400	1	-	0/6/23/26	0/1/1/1
6	IVM	D	348	-	-	0/43/141/141	0/5/7/7
6	IVM	D	349	-	-	0/43/141/141	0/5/7/7
8	OCT	D	350	-	-	0/5/5/5	0/0/0/0
8	OCT	E	348	-	-	0/5/5/5	0/0/0/0
4	NAG	E	400	1	-	0/6/23/26	0/1/1/1

The worst 5 of 20 bond length outliers are listed below:

Mol	Chain	Res	Type	Atoms	Z	Observed(Å)	Ideal(Å)
7	A	349	LMT	C3'-C4'	-3.98	1.41	1.52
7	A	350	LMT	C3'-C4'	-3.92	1.41	1.52
7	B	350	LMT	C3'-C4'	-3.85	1.41	1.52
7	B	350	LMT	C4B-C3B	-3.69	1.42	1.52
7	A	350	LMT	C4B-C3B	-3.62	1.42	1.52

The worst 5 of 95 bond angle outliers are listed below:

Mol	Chain	Res	Type	Atoms	Z	Observed(°)	Ideal(°)
6	D	348	IVM	C13-C14-C15	-4.84	106.60	113.57
6	B	349	IVM	C13-C14-C15	-4.80	106.66	113.57
6	D	349	IVM	C13-C14-C15	-4.60	106.95	113.57
6	A	348	IVM	C13-C14-C15	-4.60	106.95	113.57
6	B	348	IVM	C13-C14-C15	-4.41	107.22	113.57

There are no chirality outliers.

There are no torsion outliers.

There are no ring outliers.

13 monomers are involved in 32 short contacts:

Mol	Chain	Res	Type	Clashes	Symm-Clashes
6	A	348	IVM	1	0
7	A	349	LMT	12	0
6	B	348	IVM	1	0
6	B	349	IVM	2	0
7	B	350	LMT	4	0
8	B	351	OCT	2	0
4	B	400	NAG	1	0
4	C	400	NAG	1	0
6	D	348	IVM	2	0
6	D	349	IVM	3	0
8	D	350	OCT	2	0
8	E	348	OCT	2	0
4	E	400	NAG	1	0

5.7 Other polymers ⓘ

There are no such residues in this entry.

5.8 Polymer linkage issues ⓘ

There are no chain breaks in this entry.

6 Fit of model and data

6.1 Protein, DNA and RNA chains

In the following table, the column labelled ‘#RSRZ> 2’ contains the number (and percentage) of RSRZ outliers, followed by percent RSRZ outliers for the chain as percentile scores relative to all X-ray entries and entries of similar resolution. The OWAB column contains the minimum, median, 95th percentile and maximum values of the occupancy-weighted average B-factor per residue. The column labelled ‘Q< 0.9’ lists the number of (and percentage) of residues with an average occupancy less than 0.9.

Mol	Chain	Analysed	<RSRZ>	#RSRZ>2	OWAB(Å ²)	Q<0.9
1	A	340/347 (97%)	0.41	9 (2%) 59 50	35, 64, 128, 174	0
1	B	340/347 (97%)	0.48	19 (5%) 28 20	39, 66, 119, 196	0
1	C	339/347 (97%)	0.51	16 (4%) 35 27	44, 72, 144, 238	0
1	D	340/347 (97%)	0.45	11 (3%) 51 42	42, 73, 142, 215	0
1	E	340/347 (97%)	0.41	10 (2%) 55 46	38, 70, 138, 207	0
2	F	191/221 (86%)	1.10	37 (19%) 1 1	49, 102, 161, 181	0
2	G	200/221 (90%)	0.60	12 (6%) 25 18	52, 94, 146, 181	0
2	H	221/221 (100%)	0.56	14 (6%) 23 17	40, 77, 131, 280	0
2	I	199/221 (90%)	1.34	55 (27%) 1 1	56, 106, 170, 206	0
2	J	215/221 (97%)	0.39	4 (1%) 70 60	47, 80, 150, 240	0
3	K	199/210 (94%)	0.35	5 (2%) 61 51	61, 102, 149, 201	0
3	L	210/210 (100%)	0.45	8 (3%) 44 34	43, 74, 119, 157	0
3	M	210/210 (100%)	0.44	8 (3%) 44 34	46, 82, 126, 150	0
3	N	158/210 (75%)	0.86	23 (14%) 3 2	60, 106, 170, 198	0
3	O	195/210 (92%)	1.50	62 (31%) 1 1	61, 109, 160, 189	0
All	All	3697/3890 (95%)	0.61	293 (7%) 15 11	35, 80, 150, 280	0

The worst 5 of 293 RSRZ outliers are listed below:

Mol	Chain	Res	Type	RSRZ
2	I	188	SER	9.2
1	B	302	ASN	8.8
2	H	136	GLY	8.2
2	I	189	SER	7.5
3	O	208	SER	7.4

6.2 Non-standard residues in protein, DNA, RNA chains [i](#)

There are no non-standard protein/DNA/RNA residues in this entry.

6.3 Carbohydrates [i](#)

There are no carbohydrates in this entry.

6.4 Ligands [i](#)

In the following table, the Atoms column lists the number of modelled atoms in the group and the number defined in the chemical component dictionary. LLDF column lists the quality of electron density of the group with respect to its neighbouring residues in protein, DNA or RNA chains. The B-factors column lists the minimum, median, 95th percentile and maximum values of B factors of atoms in the group. The column labelled 'Q< 0.9' lists the number of atoms with occupancy less than 0.9.

Mol	Type	Chain	Res	Atoms	RSCC	RSR	LLDF	B-factors(Å ²)	Q<0.9
4	NAG	B	400	14/15	0.79	0.39	9.90	132,137,140,142	0
8	OCT	B	351	8/8	0.86	0.56	9.72	68,68,68,68	0
4	NAG	E	400	14/15	0.69	0.41	6.36	162,166,169,171	0
4	NAG	C	400	14/15	0.72	0.45	3.64	119,123,126,128	0
8	OCT	D	350	8/8	0.82	0.40	2.40	61,61,61,61	0
6	IVM	B	348	62/62	0.94	0.34	1.22	47,63,89,106	0
7	LMT	A	350	27/35	0.56	0.33	0.99	149,149,149,149	0
6	IVM	B	349	62/62	0.94	0.36	0.95	55,70,97,114	0
6	IVM	D	348	62/62	0.93	0.35	0.85	57,75,99,115	0
6	IVM	A	348	62/62	0.94	0.32	0.72	56,70,97,114	0
6	IVM	D	349	62/62	0.93	0.33	0.58	52,68,94,111	0
9	UND	B	352	11/11	0.72	0.25	0.55	63,63,63,63	0
7	LMT	A	349	26/35	0.85	0.31	0.01	110,110,110,110	0
7	LMT	B	350	26/35	0.73	0.35	-	166,166,166,166	0
8	OCT	E	348	8/8	0.82	0.44	-	74,74,74,74	0
5	CL	C	348	1/1	0.95	0.20	-	83,83,83,83	0

6.5 Other polymers [i](#)

There are no such residues in this entry.