



# Full wwPDB X-ray Structure Validation Report ⓘ

Feb 1, 2016 – 05:39 AM GMT

PDB ID : 2RJH  
Title : Crystal structure of biosynthetic alaine racemase in D-cycloserine-bound form from Escherichia coli  
Authors : Wu, D.; Hu, T.; Zhang, L.; Jiang, H.; Shen, X.  
Deposited on : 2007-10-15  
Resolution : 2.40 Å(reported)

This is a Full wwPDB X-ray Structure Validation Report for a publicly released PDB entry.  
We welcome your comments at [validation@mail.wwpdb.org](mailto:validation@mail.wwpdb.org)  
A user guide is available at  
<http://wwpdb.org/validation/2016/XrayValidationReportHelp>  
with specific help available everywhere you see the ⓘ symbol.

---

The following versions of software and data (see [references ⓘ](#)) were used in the production of this report:

MolProbity : 4.02b-467  
Mogul : 1.7 (RC4), CSD as536be (2015)  
Xtriage (Phenix) : 1.9-1692  
EDS : rb-20026688  
Percentile statistics : 20151230.v01 (using entries in the PDB archive December 30th 2015)  
Refmac : 5.8.0135  
CCP4 : 6.5.0  
Ideal geometry (proteins) : Engh & Huber (2001)  
Ideal geometry (DNA, RNA) : Parkinson et al. (1996)  
Validation Pipeline (wwPDB-VP) : trunk26865

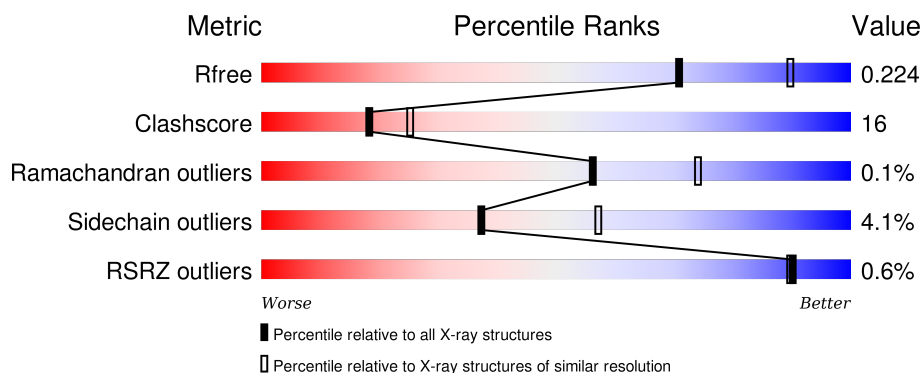
# 1 Overall quality at a glance

The following experimental techniques were used to determine the structure:

## *X-RAY DIFFRACTION*

The reported resolution of this entry is 2.40 Å.

Percentile scores (ranging between 0-100) for global validation metrics of the entry are shown in the following graphic. The table shows the number of entries on which the scores are based.



Metric	Whole archive (#Entries)	Similar resolution (#Entries, resolution range(Å))
$R_{free}$	91344	2919 (2.40-2.40)
Clashscore	102246	3407 (2.40-2.40)
Ramachandran outliers	100387	3351 (2.40-2.40)
Sidechain outliers	100360	3352 (2.40-2.40)
RSRZ outliers	91569	2928 (2.40-2.40)

The table below summarises the geometric issues observed across the polymeric chains and their fit to the electron density. The red, orange, yellow and green segments on the lower bar indicate the fraction of residues that contain outliers for  $\geq 3$ , 2, 1 and 0 types of geometric quality criteria. A grey segment represents the fraction of residues that are not modelled. The numeric value for each fraction is indicated below the corresponding segment, with a dot representing fractions  $\leq 5\%$ . The upper red bar (where present) indicates the fraction of residues that have poor fit to the electron density. The numeric value is given above the bar.

Mol	Chain	Length	Quality of chain
1	A	379	<div> <div></div> <div>71% 21% • 5%</div> </div>
1	B	379	<div> <div></div> <div>73% 20% • 5%</div> </div>
1	C	379	<div> <div>%</div> <div>66% 25% • 7%</div> </div>
1	D	379	<div> <div>%</div> <div>62% 30% • 6%</div> </div>

The following table lists non-polymeric compounds, carbohydrate monomers and non-standard

residues in protein, DNA, RNA chains that are outliers for geometric or electron-density-fit criteria:

Mol	Type	Chain	Res	Chirality	Geometry	Clashes	Electron density
2	SO4	A	360	-	X	-	-
3	DCS	A	362	X	-	-	-
3	DCS	B	362	X	-	-	-
3	DCS	C	362	X	-	-	-
3	DCS	D	360	X	-	X	-

## 2 Entry composition

There are 4 unique types of molecules in this entry. The entry contains 11633 atoms, of which 0 are hydrogens and 0 are deuteriums.

In the tables below, the ZeroOcc column contains the number of atoms modelled with zero occupancy, the AltConf column contains the number of residues with at least one atom in alternate conformation and the Trace column contains the number of residues modelled with at most 2 atoms.

- Molecule 1 is a protein called Alanine racemase.

Mol	Chain	Residues	Atoms					ZeroOcc	AltConf	Trace
1	A	359	Total	C	N	O	S	0	0	0
			2754	1734	498	507	15			
1	B	359	Total	C	N	O	S	0	0	0
			2754	1734	498	507	15			
1	C	353	Total	C	N	O	S	0	0	0
			2704	1704	488	498	14			
1	D	357	Total	C	N	O	S	0	0	0
			2737	1724	495	504	14			

There are 80 discrepancies between the modelled and reference sequences:

Chain	Residue	Modelled	Actual	Comment	Reference
A	-19	MET	-	EXPRESSION TAG	UNP P0A6B4
A	-18	GLY	-	EXPRESSION TAG	UNP P0A6B4
A	-17	SER	-	EXPRESSION TAG	UNP P0A6B4
A	-16	SER	-	EXPRESSION TAG	UNP P0A6B4
A	-15	HIS	-	EXPRESSION TAG	UNP P0A6B4
A	-14	HIS	-	EXPRESSION TAG	UNP P0A6B4
A	-13	HIS	-	EXPRESSION TAG	UNP P0A6B4
A	-12	HIS	-	EXPRESSION TAG	UNP P0A6B4
A	-11	HIS	-	EXPRESSION TAG	UNP P0A6B4
A	-10	HIS	-	EXPRESSION TAG	UNP P0A6B4
A	-9	SER	-	EXPRESSION TAG	UNP P0A6B4
A	-8	SER	-	EXPRESSION TAG	UNP P0A6B4
A	-7	GLY	-	EXPRESSION TAG	UNP P0A6B4
A	-6	LEU	-	EXPRESSION TAG	UNP P0A6B4
A	-5	VAL	-	EXPRESSION TAG	UNP P0A6B4
A	-4	PRO	-	EXPRESSION TAG	UNP P0A6B4
A	-3	ARG	-	EXPRESSION TAG	UNP P0A6B4
A	-2	GLY	-	EXPRESSION TAG	UNP P0A6B4
A	-1	SER	-	EXPRESSION TAG	UNP P0A6B4
A	0	HIS	-	EXPRESSION TAG	UNP P0A6B4
B	-19	MET	-	EXPRESSION TAG	UNP P0A6B4

*Continued on next page...*

*Continued from previous page...*

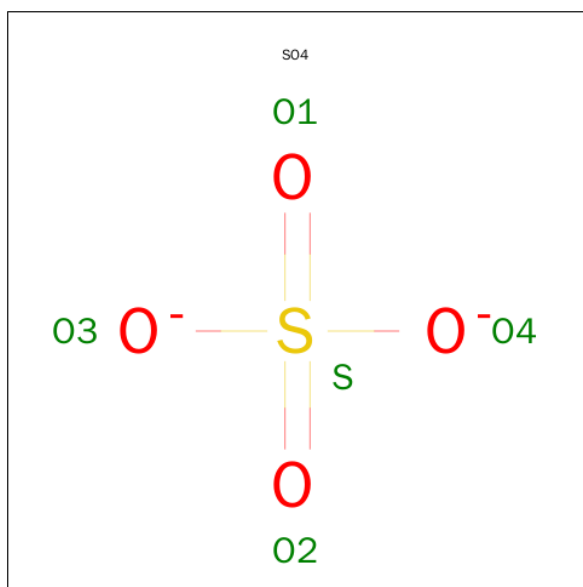
Chain	Residue	Modelled	Actual	Comment	Reference
B	-18	GLY	-	EXPRESSION TAG	UNP P0A6B4
B	-17	SER	-	EXPRESSION TAG	UNP P0A6B4
B	-16	SER	-	EXPRESSION TAG	UNP P0A6B4
B	-15	HIS	-	EXPRESSION TAG	UNP P0A6B4
B	-14	HIS	-	EXPRESSION TAG	UNP P0A6B4
B	-13	HIS	-	EXPRESSION TAG	UNP P0A6B4
B	-12	HIS	-	EXPRESSION TAG	UNP P0A6B4
B	-11	HIS	-	EXPRESSION TAG	UNP P0A6B4
B	-10	HIS	-	EXPRESSION TAG	UNP P0A6B4
B	-9	SER	-	EXPRESSION TAG	UNP P0A6B4
B	-8	SER	-	EXPRESSION TAG	UNP P0A6B4
B	-7	GLY	-	EXPRESSION TAG	UNP P0A6B4
B	-6	LEU	-	EXPRESSION TAG	UNP P0A6B4
B	-5	VAL	-	EXPRESSION TAG	UNP P0A6B4
B	-4	PRO	-	EXPRESSION TAG	UNP P0A6B4
B	-3	ARG	-	EXPRESSION TAG	UNP P0A6B4
B	-2	GLY	-	EXPRESSION TAG	UNP P0A6B4
B	-1	SER	-	EXPRESSION TAG	UNP P0A6B4
B	0	HIS	-	EXPRESSION TAG	UNP P0A6B4
C	-19	MET	-	EXPRESSION TAG	UNP P0A6B4
C	-18	GLY	-	EXPRESSION TAG	UNP P0A6B4
C	-17	SER	-	EXPRESSION TAG	UNP P0A6B4
C	-16	SER	-	EXPRESSION TAG	UNP P0A6B4
C	-15	HIS	-	EXPRESSION TAG	UNP P0A6B4
C	-14	HIS	-	EXPRESSION TAG	UNP P0A6B4
C	-13	HIS	-	EXPRESSION TAG	UNP P0A6B4
C	-12	HIS	-	EXPRESSION TAG	UNP P0A6B4
C	-11	HIS	-	EXPRESSION TAG	UNP P0A6B4
C	-10	HIS	-	EXPRESSION TAG	UNP P0A6B4
C	-9	SER	-	EXPRESSION TAG	UNP P0A6B4
C	-8	SER	-	EXPRESSION TAG	UNP P0A6B4
C	-7	GLY	-	EXPRESSION TAG	UNP P0A6B4
C	-6	LEU	-	EXPRESSION TAG	UNP P0A6B4
C	-5	VAL	-	EXPRESSION TAG	UNP P0A6B4
C	-4	PRO	-	EXPRESSION TAG	UNP P0A6B4
C	-3	ARG	-	EXPRESSION TAG	UNP P0A6B4
C	-2	GLY	-	EXPRESSION TAG	UNP P0A6B4
C	-1	SER	-	EXPRESSION TAG	UNP P0A6B4
C	0	HIS	-	EXPRESSION TAG	UNP P0A6B4
D	-19	MET	-	EXPRESSION TAG	UNP P0A6B4
D	-18	GLY	-	EXPRESSION TAG	UNP P0A6B4
D	-17	SER	-	EXPRESSION TAG	UNP P0A6B4

*Continued on next page...*

Continued from previous page...

Chain	Residue	Modelled	Actual	Comment	Reference
D	-16	SER	-	EXPRESSION TAG	UNP P0A6B4
D	-15	HIS	-	EXPRESSION TAG	UNP P0A6B4
D	-14	HIS	-	EXPRESSION TAG	UNP P0A6B4
D	-13	HIS	-	EXPRESSION TAG	UNP P0A6B4
D	-12	HIS	-	EXPRESSION TAG	UNP P0A6B4
D	-11	HIS	-	EXPRESSION TAG	UNP P0A6B4
D	-10	HIS	-	EXPRESSION TAG	UNP P0A6B4
D	-9	SER	-	EXPRESSION TAG	UNP P0A6B4
D	-8	SER	-	EXPRESSION TAG	UNP P0A6B4
D	-7	GLY	-	EXPRESSION TAG	UNP P0A6B4
D	-6	LEU	-	EXPRESSION TAG	UNP P0A6B4
D	-5	VAL	-	EXPRESSION TAG	UNP P0A6B4
D	-4	PRO	-	EXPRESSION TAG	UNP P0A6B4
D	-3	ARG	-	EXPRESSION TAG	UNP P0A6B4
D	-2	GLY	-	EXPRESSION TAG	UNP P0A6B4
D	-1	SER	-	EXPRESSION TAG	UNP P0A6B4
D	0	HIS	-	EXPRESSION TAG	UNP P0A6B4

- Molecule 2 is SULFATE ION (three-letter code: SO<sub>4</sub>) (formula: O<sub>4</sub>S).



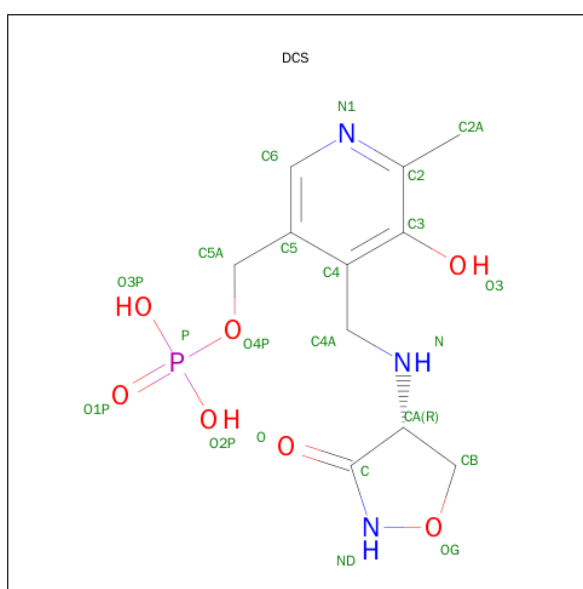
Mol	Chain	Residues	Atoms			ZeroOcc	AltConf
2	A	1	Total	O	S	0	0
			5	4	1		
2	A	1	Total	O	S	0	0
			5	4	1		
2	B	1	Total	O	S	0	0
			5	4	1		

Continued on next page...

Continued from previous page...

Mol	Chain	Residues	Atoms			ZeroOcc	AltConf
2	B	1	Total 5	O 4	S 1	0	0
2	C	1	Total 5	O 4	S 1	0	0
2	C	1	Total 5	O 4	S 1	0	0

- Molecule 3 is D-[3-HYDROXY-2-METHYL-5-PHOSPHONOXYMETHYL-PYRIDIN-4-YLMETHYL]-N,O-CYCLOSERYLAMIDE (three-letter code: DCS) (formula:  $C_{11}H_{16}N_3O_7P$ ).



Mol	Chain	Residues	Atoms					ZeroOcc	AltConf
3	A	1	Total 22	C 11	N 3	O 7	P 1	0	0
3	B	1	Total 22	C 11	N 3	O 7	P 1	0	0
3	C	1	Total 22	C 11	N 3	O 7	P 1	0	0
3	D	1	Total 22	C 11	N 3	O 7	P 1	0	0

- Molecule 4 is water.

Mol	Chain	Residues	Atoms	ZeroOcc	AltConf
4	A	185	Total O 185 185	0	0

*Continued on next page...*

*Continued from previous page...*

Mol	Chain	Residues	Atoms		ZeroOcc	AltConf
4	B	190	Total 190	O 190	0	0
4	C	83	Total 83	O 83	0	0
4	D	108	Total 108	O 108	0	0

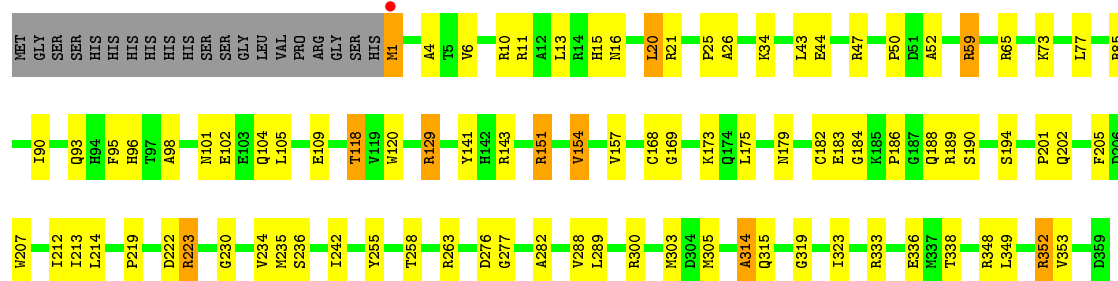


### 3 Residue-property plots

These plots are drawn for all protein, RNA and DNA chains in the entry. The first graphic for a chain summarises the proportions of errors displayed in the second graphic. The second graphic shows the sequence view annotated by issues in geometry and electron density. Residues are color-coded according to the number of geometric quality criteria for which they contain at least one outlier: green = 0, yellow = 1, orange = 2 and red = 3 or more. A red dot above a residue indicates a poor fit to the electron density ( $RSRZ > 2$ ). Stretches of 2 or more consecutive residues without any outlier are shown as a green connector. Residues present in the sample, but not in the model, are shown in grey.

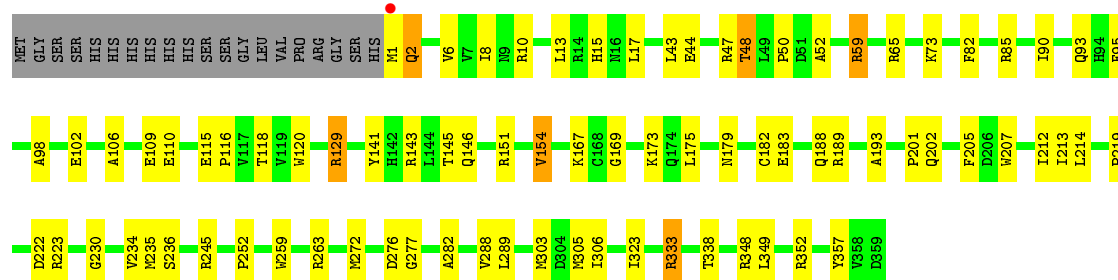
#### • Molecule 1: Alanine racemase

Chain A: 



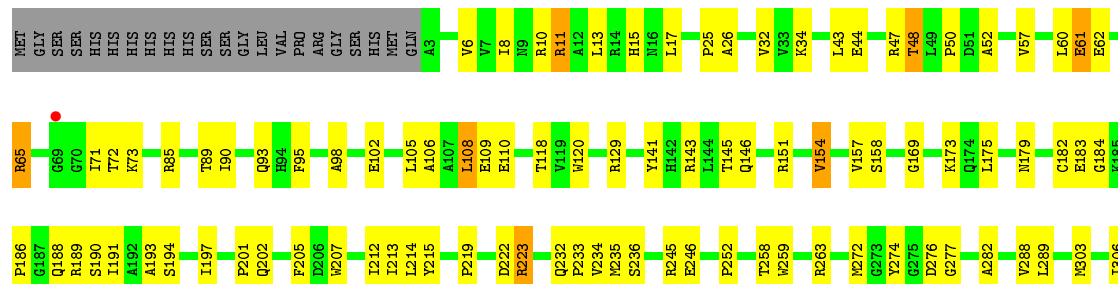
#### • Molecule 1: Alanine racemase

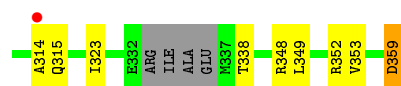
Chain B: 



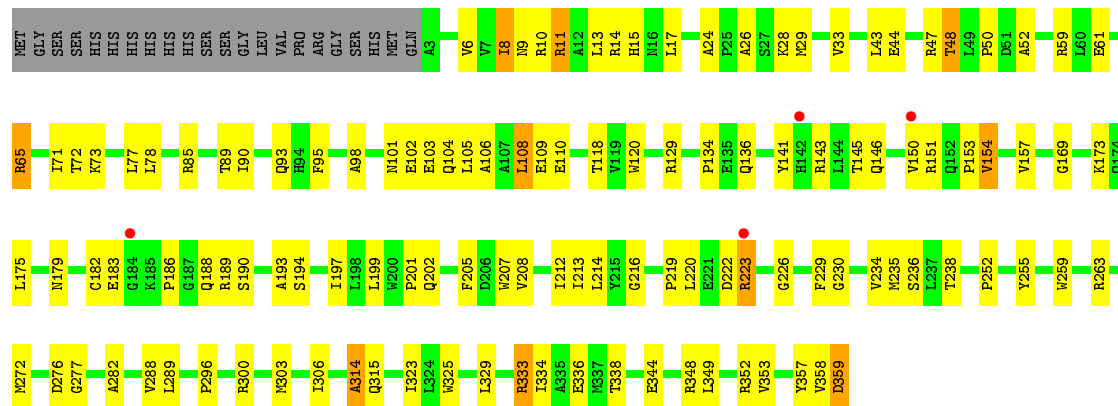
#### • Molecule 1: Alanine racemase

Chain C: 





● Molecule 1: Alanine racemase



## 4 Data and refinement statistics

Property	Value	Source
Space group	P 6	Depositor
Cell constants a, b, c, $\alpha$ , $\beta$ , $\gamma$	147.71Å 147.71Å 163.72Å 90.00° 90.00° 120.00°	Depositor
Resolution (Å)	15.00 – 2.40 37.82 – 2.40	Depositor EDS
% Data completeness (in resolution range)	99.9 (15.00-2.40) 99.9 (37.82-2.40)	Depositor EDS
$R_{merge}$	0.12	Depositor
$R_{sym}$	0.12	Depositor
$\langle I/\sigma(I) \rangle$ <sup>1</sup>	3.71 (at 2.39Å)	Xtriage
Refinement program	CNS	Depositor
R, $R_{free}$	0.199 , 0.228 0.194 , 0.224	Depositor DCC
$R_{free}$ test set	7605 reflections (10.70%)	DCC
Wilson B-factor (Å <sup>2</sup> )	15.9	Xtriage
Anisotropy	0.403	Xtriage
Bulk solvent $k_{sol}$ (e/Å <sup>3</sup> ), $B_{sol}$ (Å <sup>2</sup> )	0.36 , 14.4	EDS
Estimated twinning fraction	0.487 for h,-h-k,-l	Xtriage
L-test for twinning <sup>2</sup>	$\langle  L  \rangle = 0.49$ , $\langle L^2 \rangle = 0.32$	Xtriage
Outliers	4 of 78992 reflections (0.005%)	Xtriage
$F_o, F_c$ correlation	0.92	EDS
Total number of atoms	11633	wwPDB-VP
Average B, all atoms (Å <sup>2</sup> )	20.0	wwPDB-VP

Xtriage's analysis on translational NCS is as follows: *The largest off-origin peak in the Patterson function is 3.86% of the height of the origin peak. No significant pseudotranslation is detected.*

<sup>1</sup>Intensities estimated from amplitudes.

<sup>2</sup>Theoretical values of  $\langle |L| \rangle$ ,  $\langle L^2 \rangle$  for acentric reflections are 0.5, 0.375 respectively for untwinned datasets, and 0.333, 0.2 for perfectly twinned datasets.

## 5 Model quality

### 5.1 Standard geometry

Bond lengths and bond angles in the following residue types are not validated in this section: KCX, DCS, SO4

The Z score for a bond length (or angle) is the number of standard deviations the observed value is removed from the expected value. A bond length (or angle) with  $|Z| > 5$  is considered an outlier worth inspection. RMSZ is the root-mean-square of all Z scores of the bond lengths (or angles).

Mol	Chain	Bond lengths		Bond angles	
		RMSZ	# $ Z  > 5$	RMSZ	# $ Z  > 5$
1	A	0.63	2/2799 (0.1%)	1.08	17/3800 (0.4%)
1	B	0.59	1/2799 (0.0%)	0.98	13/3800 (0.3%)
1	C	0.47	0/2748	1.17	18/3731 (0.5%)
1	D	0.45	1/2782 (0.0%)	0.97	19/3778 (0.5%)
All	All	0.54	4/11128 (0.0%)	1.06	67/15109 (0.4%)

Chiral center outliers are detected by calculating the chiral volume of a chiral center and verifying if the center is modelled as a planar moiety or with the opposite hand. A planarity outlier is detected by checking planarity of atoms in a peptide group, atoms in a mainchain group or atoms of a sidechain that are expected to be planar.

Mol	Chain	#Chirality outliers	#Planarity outliers
1	D	0	1

All (4) bond length outliers are listed below:

Mol	Chain	Res	Type	Atoms	Z	Observed(Å)	Ideal(Å)
1	A	59	ARG	CZ-NH2	-5.58	1.25	1.33
1	B	357	TYR	CD2-CE2	-5.25	1.31	1.39
1	A	118	THR	CB-CG2	-5.20	1.35	1.52
1	D	359	ASP	CB-CG	-5.05	1.41	1.51

All (67) bond angle outliers are listed below:

Mol	Chain	Res	Type	Atoms	Z	Observed(°)	Ideal(°)
1	C	151	ARG	NE-CZ-NH2	-21.11	109.74	120.30
1	C	151	ARG	NE-CZ-NH1	21.03	130.81	120.30
1	C	223	ARG	NE-CZ-NH2	-20.88	109.86	120.30
1	C	223	ARG	NE-CZ-NH1	20.67	130.63	120.30
1	A	333	ARG	NE-CZ-NH1	-19.53	110.53	120.30

*Continued on next page...*

*Continued from previous page...*

Mol	Chain	Res	Type	Atoms	Z	Observed(°)	Ideal(°)
1	B	85	ARG	NE-CZ-NH1	-18.34	111.13	120.30
1	A	333	ARG	NE-CZ-NH2	18.26	129.43	120.30
1	B	85	ARG	NE-CZ-NH2	17.24	128.92	120.30
1	D	11	ARG	NE-CZ-NH2	-15.69	112.45	120.30
1	A	65	ARG	NE-CZ-NH1	-15.32	112.64	120.30
1	D	11	ARG	NE-CZ-NH1	15.16	127.88	120.30
1	C	11	ARG	NE-CZ-NH1	-14.64	112.98	120.30
1	D	65	ARG	NE-CZ-NH1	-14.55	113.02	120.30
1	A	65	ARG	NE-CZ-NH2	14.22	127.41	120.30
1	C	65	ARG	NE-CZ-NH1	14.14	127.37	120.30
1	D	65	ARG	NE-CZ-NH2	14.04	127.32	120.30
1	C	65	ARG	NE-CZ-NH2	-13.88	113.36	120.30
1	C	11	ARG	NE-CZ-NH2	13.83	127.22	120.30
1	B	65	ARG	NE-CZ-NH1	13.75	127.17	120.30
1	A	129	ARG	NE-CZ-NH1	-13.48	113.56	120.30
1	B	65	ARG	NE-CZ-NH2	-13.46	113.57	120.30
1	A	11	ARG	NE-CZ-NH1	-13.30	113.65	120.30
1	C	129	ARG	NE-CZ-NH2	-12.79	113.91	120.30
1	A	11	ARG	NE-CZ-NH2	12.60	126.60	120.30
1	B	129	ARG	NE-CZ-NH1	-12.43	114.08	120.30
1	A	129	ARG	NE-CZ-NH2	11.57	126.08	120.30
1	C	129	ARG	NE-CZ-NH1	11.53	126.06	120.30
1	B	129	ARG	NE-CZ-NH2	11.49	126.05	120.30
1	D	129	ARG	NE-CZ-NH2	-11.07	114.77	120.30
1	C	151	ARG	CD-NE-CZ	10.97	138.96	123.60
1	D	129	ARG	NE-CZ-NH1	10.32	125.46	120.30
1	C	223	ARG	CD-NE-CZ	10.25	137.96	123.60
1	A	333	ARG	CD-NE-CZ	8.58	135.62	123.60
1	B	151	ARG	NE-CZ-NH1	-8.47	116.06	120.30
1	D	11	ARG	CD-NE-CZ	8.16	135.02	123.60
1	D	151	ARG	NE-CZ-NH1	-8.01	116.30	120.30
1	B	151	ARG	NE-CZ-NH2	7.93	124.27	120.30
1	D	65	ARG	CD-NE-CZ	7.91	134.67	123.60
1	A	65	ARG	CD-NE-CZ	7.88	134.64	123.60
1	B	85	ARG	CD-NE-CZ	7.69	134.37	123.60
1	B	65	ARG	CD-NE-CZ	7.49	134.09	123.60
1	D	151	ARG	NE-CZ-NH2	7.44	124.02	120.30
1	A	11	ARG	CD-NE-CZ	7.33	133.86	123.60
1	C	65	ARG	CD-NE-CZ	7.32	133.85	123.60
1	C	11	ARG	CD-NE-CZ	7.26	133.76	123.60
1	B	333	ARG	NE-CZ-NH2	-7.23	116.69	120.30
1	D	333	ARG	NE-CZ-NH2	-6.76	116.92	120.30

*Continued on next page...*

*Continued from previous page...*

Mol	Chain	Res	Type	Atoms	Z	Observed(°)	Ideal(°)
1	A	223	ARG	NE-CZ-NH2	6.76	123.68	120.30
1	D	223	ARG	NE-CZ-NH1	-6.72	116.94	120.30
1	B	333	ARG	NE-CZ-NH1	6.69	123.65	120.30
1	D	223	ARG	NE-CZ-NH2	6.61	123.60	120.30
1	B	59	ARG	NE-CZ-NH1	6.55	123.58	120.30
1	D	333	ARG	NE-CZ-NH1	6.32	123.46	120.30
1	C	85	ARG	NE-CZ-NH2	-6.17	117.22	120.30
1	A	85	ARG	NE-CZ-NH2	-5.89	117.36	120.30
1	D	85	ARG	NE-CZ-NH2	-5.87	117.36	120.30
1	A	59	ARG	NE-CZ-NH1	5.87	123.23	120.30
1	A	223	ARG	NE-CZ-NH1	-5.82	117.39	120.30
1	C	108	LEU	CB-CG-CD2	-5.82	101.11	111.00
1	C	85	ARG	NE-CZ-NH1	5.74	123.17	120.30
1	D	85	ARG	NE-CZ-NH1	5.63	123.11	120.30
1	D	108	LEU	CB-CG-CD2	-5.31	101.98	111.00
1	A	85	ARG	NE-CZ-NH1	5.20	122.90	120.30
1	D	129	ARG	CD-NE-CZ	5.08	130.71	123.60
1	A	314	ALA	N-CA-C	5.07	124.70	111.00
1	D	314	ALA	N-CA-C	5.07	124.70	111.00
1	C	129	ARG	CD-NE-CZ	5.01	130.62	123.60

There are no chirality outliers.

All (1) planarity outliers are listed below:

Mol	Chain	Res	Type	Group
1	D	358	VAL	Mainchain

## 5.2 Too-close contacts ⓘ

In the following table, the Non-H and H(model) columns list the number of non-hydrogen atoms and hydrogen atoms in the chain respectively. The H(added) column lists the number of hydrogen atoms added and optimized by MolProbity. The Clashes column lists the number of clashes within the asymmetric unit, whereas Symm-Clashes lists symmetry related clashes.

Mol	Chain	Non-H	H(model)	H(added)	Clashes	Symm-Clashes
1	A	2754	0	2759	79	0
1	B	2754	0	2759	65	0
1	C	2704	0	2704	91	0
1	D	2737	0	2739	115	0
2	A	10	0	0	0	0
2	B	10	0	0	0	0

*Continued on next page...*

*Continued from previous page...*

Mol	Chain	Non-H	H(model)	H(added)	Clashes	Symm-Clashes
2	C	10	0	0	0	0
3	A	22	0	13	3	0
3	B	22	0	13	6	0
3	C	22	0	13	5	0
3	D	22	0	13	7	0
4	A	185	0	0	11	0
4	B	190	0	0	3	0
4	C	83	0	0	11	0
4	D	108	0	0	27	0
All	All	11633	0	11013	345	0

The all-atom clashscore is defined as the number of clashes found per 1000 atoms (including hydrogen atoms). The all-atom clashscore for this structure is 16.

All (345) close contacts within the same asymmetric unit are listed below, sorted by their clash magnitude.

Atom-1	Atom-2	Interatomic distance (Å)	Clash overlap (Å)
3:B:362:DCS:O3P	3:B:362:DCS:P	1.15	1.54
1:C:6:VAL:HG23	1:C:353:VAL:HG11	1.42	1.01
3:B:362:DCS:O4P	3:B:362:DCS:O3P	1.78	1.00
1:C:52:ALA:O	1:C:73:LYS:HD3	1.61	1.00
1:C:222:ASP:OD2	4:C:498:HOH:O	1.79	0.99
1:A:52:ALA:O	1:A:73:LYS:HD3	1.62	0.98
1:D:6:VAL:HG23	1:D:353:VAL:HG11	1.45	0.97
1:C:11:ARG:NH1	1:C:359:ASP:O	1.97	0.97
1:B:52:ALA:O	1:B:73:LYS:HD3	1.64	0.96
1:D:52:ALA:O	1:D:73:LYS:HD3	1.65	0.95
3:D:360:DCS:H5A1	3:D:360:DCS:N	1.82	0.94
1:D:134:PRO:HG2	4:D:449:HOH:O	1.69	0.93
4:C:437:HOH:O	1:D:348:ARG:HB2	1.69	0.91
1:A:73:LYS:HB2	1:A:73:LYS:HZ2	1.36	0.89
1:D:44:GLU:O	1:D:48:THR:HG23	1.73	0.88
1:C:44:GLU:O	1:C:48:THR:HG23	1.73	0.88
1:D:78:LEU:HD22	3:D:360:DCS:H2A3	1.55	0.88
1:B:44:GLU:O	1:B:48:THR:HG23	1.75	0.86
3:C:362:DCS:HND	1:D:303:MET:H	1.22	0.86
3:B:362:DCS:O3P	3:B:362:DCS:O2P	1.92	0.86
1:C:73:LYS:HB2	1:C:73:LYS:NZ	1.90	0.85
1:D:73:LYS:NZ	1:D:73:LYS:HB2	1.90	0.85
1:C:222:ASP:O	1:C:223:ARG:HG2	1.76	0.85
1:A:73:LYS:HB2	1:A:73:LYS:NZ	1.91	0.84

*Continued on next page...*

*Continued from previous page...*

Atom-1	Atom-2	Interatomic distance (Å)	Clash overlap (Å)
1:D:229:PHE:HZ	4:D:459:HOH:O	1.60	0.83
1:B:73:LYS:HB2	1:B:73:LYS:NZ	1.92	0.83
1:D:229:PHE:CZ	4:D:459:HOH:O	2.32	0.82
1:A:151:ARG:HH21	1:A:151:ARG:HG2	1.44	0.82
1:D:24:ALA:HB3	4:D:439:HOH:O	1.82	0.80
3:A:362:DCS:HND	1:B:303:MET:H	1.31	0.78
1:A:73:LYS:NZ	4:A:458:HOH:O	2.16	0.78
1:C:215:TYR:HE1	4:C:451:HOH:O	1.67	0.77
1:A:276:ASP:OD1	1:A:352:ARG:HD3	1.84	0.76
1:A:189:ARG:HH11	1:A:189:ARG:HB2	1.52	0.75
1:A:258:THR:HG21	4:A:405:HOH:O	1.86	0.74
1:D:189:ARG:HH11	1:D:189:ARG:HB2	1.53	0.74
1:B:189:ARG:HB2	1:B:189:ARG:HH11	1.53	0.73
3:D:360:DCS:H5A1	3:D:360:DCS:HN	1.50	0.73
1:C:145:THR:HG22	1:C:146:GLN:HE21	1.55	0.72
1:C:258:THR:HB	4:C:475:HOH:O	1.90	0.72
1:C:189:ARG:HH11	1:C:189:ARG:HB2	1.55	0.72
1:B:145:THR:HG22	1:B:146:GLN:HE21	1.55	0.72
1:D:220:LEU:HD21	4:D:386:HOH:O	1.89	0.71
1:A:1:MET:SD	1:B:82:PHE:HB3	2.30	0.71
1:A:168:CYS:O	4:A:516:HOH:O	2.10	0.70
3:B:362:DCS:O3P	3:B:362:DCS:C5A	2.40	0.69
1:D:145:THR:HG22	1:D:146:GLN:HE21	1.57	0.68
1:C:105:LEU:O	1:C:109:GLU:HG3	1.93	0.68
1:C:6:VAL:HG23	1:C:353:VAL:CG1	2.21	0.67
1:D:220:LEU:HD12	4:D:459:HOH:O	1.95	0.67
1:A:282:ALA:HA	1:A:338:THR:HG22	1.77	0.67
1:D:6:VAL:HG23	1:D:353:VAL:CG1	2.23	0.67
1:A:21:ARG:NH2	4:A:434:HOH:O	2.28	0.66
1:B:145:THR:HG22	1:B:146:GLN:NE2	2.11	0.66
1:A:47:ARG:NH1	4:A:382:HOH:O	2.28	0.66
1:C:145:THR:HG22	1:C:146:GLN:NE2	2.10	0.66
1:C:212:ILE:HG21	1:C:219:PRO:HB3	1.78	0.65
1:C:90:ILE:HG23	1:C:95:PHE:HB2	1.76	0.65
4:C:437:HOH:O	1:D:344:GLU:HG3	1.96	0.65
1:C:73:LYS:HZ3	1:C:73:LYS:HB2	1.61	0.65
3:D:360:DCS:N	3:D:360:DCS:C5A	2.57	0.65
1:D:145:THR:HG22	1:D:146:GLN:NE2	2.12	0.65
1:C:282:ALA:HA	1:C:338:THR:HG22	1.79	0.65
1:C:303:MET:H	3:D:360:DCS:HND	1.45	0.65
1:A:151:ARG:NH2	1:A:151:ARG:HG2	2.08	0.65

*Continued on next page...*



*Continued from previous page...*

Atom-1	Atom-2	Interatomic distance (Å)	Clash overlap (Å)
1:A:1:MET:N	1:B:82:PHE:HB2	2.11	0.64
1:D:282:ALA:HA	1:D:338:THR:HG22	1.80	0.64
1:D:296:PRO:HB3	4:D:463:HOH:O	1.96	0.64
1:C:274:TYR:HB2	4:C:437:HOH:O	1.96	0.64
1:D:90:ILE:HG23	1:D:95:PHE:HB2	1.78	0.64
1:B:276:ASP:OD1	1:B:352:ARG:HD3	1.98	0.64
1:A:25:PRO:HG3	1:C:184:GLY:O	1.97	0.64
1:C:65:ARG:NH2	4:C:496:HOH:O	2.27	0.63
1:D:212:ILE:HG21	1:D:219:PRO:HB3	1.79	0.63
1:A:90:ILE:HG23	1:A:95:PHE:HB2	1.80	0.63
1:C:246:GLU:HG2	4:C:430:HOH:O	1.98	0.63
1:D:73:LYS:HZ3	1:D:73:LYS:HB2	1.61	0.63
1:C:276:ASP:OD1	1:C:352:ARG:HD3	1.98	0.63
1:A:186:PRO:HB3	1:C:25:PRO:HB2	1.80	0.63
1:D:208:VAL:HG11	4:D:440:HOH:O	1.99	0.63
3:D:360:DCS:HA	4:D:437:HOH:O	1.98	0.63
1:D:230:GLY:HA2	4:D:389:HOH:O	1.98	0.62
1:C:233:PRO:HB3	4:C:439:HOH:O	2.00	0.62
1:B:282:ALA:HA	1:B:338:THR:HG22	1.82	0.62
1:D:276:ASP:OD1	1:D:352:ARG:HD3	2.00	0.62
1:B:90:ILE:HG23	1:B:95:PHE:HB2	1.81	0.61
1:D:105:LEU:O	1:D:109:GLU:HG3	2.00	0.61
1:A:212:ILE:HG21	1:A:219:PRO:HB3	1.82	0.61
1:A:186:PRO:HA	1:C:26:ALA:HB2	1.82	0.61
1:D:43:LEU:HD21	1:D:47:ARG:NH2	2.15	0.61
1:A:21:ARG:NE	4:A:434:HOH:O	2.33	0.61
1:B:212:ILE:HG21	1:B:219:PRO:HB3	1.83	0.60
1:C:50:PRO:O	1:C:73:LYS:HE2	2.01	0.60
1:A:21:ARG:CZ	4:A:434:HOH:O	2.49	0.60
1:A:50:PRO:O	1:A:73:LYS:HE2	2.02	0.60
1:A:43:LEU:HD21	1:A:47:ARG:NH2	2.17	0.60
1:B:73:LYS:HB2	1:B:73:LYS:HZ3	1.66	0.60
1:D:8:ILE:HG12	1:D:9:ASN:N	2.17	0.60
3:D:360:DCS:HN	3:D:360:DCS:C5A	2.13	0.59
1:B:102:GLU:OE2	1:B:143:ARG:NH2	2.34	0.59
1:D:50:PRO:O	1:D:73:LYS:HE2	2.02	0.59
1:D:188:GLN:HE21	1:D:207:TRP:HE1	1.50	0.59
1:D:102:GLU:OE2	1:D:143:ARG:NH2	2.35	0.59
1:B:73:LYS:HB2	1:B:73:LYS:HZ2	1.67	0.59
1:D:8:ILE:HG12	1:D:234:VAL:CG1	2.32	0.59
1:C:352:ARG:HD3	1:D:59:ARG:NH2	2.17	0.59

*Continued on next page...*

*Continued from previous page...*

Atom-1	Atom-2	Interatomic distance (Å)	Clash overlap (Å)
1:A:188:GLN:HE21	1:A:207:TRP:HE1	1.48	0.59
1:A:26:ALA:HB2	1:C:186:PRO:HA	1.85	0.58
1:B:222:ASP:O	1:B:223:ARG:HB2	2.02	0.58
1:B:50:PRO:O	1:B:73:LYS:HE2	2.03	0.58
1:B:188:GLN:HE21	1:B:207:TRP:HE1	1.48	0.58
1:A:189:ARG:HB2	1:A:189:ARG:NH1	2.17	0.58
1:B:43:LEU:HD21	1:B:47:ARG:NH2	2.18	0.58
1:C:43:LEU:HD21	1:C:47:ARG:NH2	2.18	0.58
1:D:136:GLN:HB3	4:D:373:HOH:O	2.03	0.58
1:C:188:GLN:HE21	1:C:207:TRP:HE1	1.49	0.58
1:A:1:MET:CE	1:A:242:ILE:HG22	2.33	0.58
1:A:77:LEU:HB3	4:A:369:HOH:O	2.03	0.58
1:A:222:ASP:O	1:A:223:ARG:CG	2.52	0.57
1:C:15:HIS:CD2	1:C:232:GLN:HG3	2.40	0.57
1:D:201:PRO:HG2	1:D:202:GLN:HE21	1.68	0.57
1:B:189:ARG:HB2	1:B:189:ARG:NH1	2.19	0.56
1:D:189:ARG:NH1	1:D:189:ARG:HB2	2.18	0.56
1:C:102:GLU:OE2	1:C:143:ARG:NH2	2.38	0.56
1:D:179:ASN:O	1:D:183:GLU:HG3	2.06	0.56
1:D:103:GLU:HG2	4:D:448:HOH:O	2.05	0.56
1:C:189:ARG:NH1	1:C:189:ARG:HB2	2.20	0.56
1:C:222:ASP:C	1:C:223:ARG:HG2	2.26	0.56
1:C:61:GLU:HG2	1:C:62:GLU:N	2.20	0.55
1:C:169:GLY:O	1:C:173:LYS:HG3	2.07	0.55
1:D:222:ASP:O	1:D:223:ARG:CG	2.54	0.55
1:A:1:MET:HE1	1:A:242:ILE:HG22	1.87	0.55
1:C:212:ILE:HG23	1:C:213:ILE:N	2.22	0.55
1:D:8:ILE:CG1	1:D:234:VAL:CG1	2.84	0.55
1:B:15:HIS:HD2	4:B:647:HOH:O	1.88	0.55
1:D:329:LEU:HG	1:D:334:ILE:HD11	1.87	0.55
1:B:179:ASN:O	1:B:183:GLU:HG3	2.05	0.55
1:D:24:ALA:HB2	4:D:440:HOH:O	2.06	0.55
1:C:222:ASP:O	1:C:223:ARG:CG	2.51	0.54
1:D:13:LEU:HD13	1:D:234:VAL:HG21	1.89	0.54
1:D:26:ALA:HA	4:D:444:HOH:O	2.07	0.54
1:C:314:ALA:O	1:C:315:GLN:HB2	2.08	0.54
1:D:212:ILE:HG23	1:D:213:ILE:N	2.23	0.54
1:C:179:ASN:O	1:C:183:GLU:HG3	2.07	0.54
1:D:73:LYS:HZ2	1:D:73:LYS:HB2	1.69	0.54
1:D:108:LEU:HD21	1:D:150:VAL:CG2	2.37	0.54
1:A:102:GLU:OE2	1:A:143:ARG:NH2	2.37	0.54

*Continued on next page...*

*Continued from previous page...*

Atom-1	Atom-2	Interatomic distance (Å)	Clash overlap (Å)
1:C:73:LYS:HZ2	1:C:73:LYS:HB2	1.70	0.53
1:C:245:ARG:HD2	4:D:410:HOH:O	2.07	0.53
1:C:235:MET:HG2	1:C:236:SER:N	2.23	0.53
1:D:169:GLY:O	1:D:173:LYS:HG3	2.07	0.53
1:D:199:LEU:HG	4:D:386:HOH:O	2.08	0.53
1:C:13:LEU:HD13	1:C:234:VAL:HG21	1.90	0.53
1:C:6:VAL:HG13	1:C:235:MET:HG3	1.91	0.53
1:B:193:ALA:HB1	3:B:362:DCS:H5A2	1.90	0.53
1:D:8:ILE:HG23	1:D:357:TYR:CE1	2.44	0.53
1:A:179:ASN:O	1:A:183:GLU:HG3	2.08	0.53
1:A:235:MET:HG2	1:A:236:SER:N	2.24	0.53
1:A:98:ALA:HA	1:A:120:TRP:O	2.08	0.52
1:A:303:MET:H	3:B:362:DCS:HND	1.56	0.52
1:B:13:LEU:HD13	1:B:234:VAL:HG21	1.91	0.52
1:C:93:GLN:HE21	1:C:93:GLN:HA	1.75	0.52
1:D:106:ALA:O	1:D:110:GLU:HG2	2.10	0.52
1:A:13:LEU:HD13	1:A:234:VAL:HG21	1.91	0.52
1:A:129:ARG:HD3	1:B:305:MET:SD	2.49	0.52
1:B:245:ARG:HD2	4:B:547:HOH:O	2.09	0.52
1:A:212:ILE:HG23	1:A:213:ILE:N	2.25	0.51
1:B:169:GLY:O	1:B:173:LYS:HG3	2.10	0.51
1:D:220:LEU:HA	4:D:400:HOH:O	2.09	0.51
1:A:314:ALA:O	1:A:315:GLN:HB2	2.10	0.51
1:D:235:MET:HG2	1:D:236:SER:N	2.25	0.51
1:A:182:CYS:HB3	1:A:189:ARG:HD3	1.92	0.51
1:B:189:ARG:CB	1:B:189:ARG:HH11	2.23	0.51
1:B:1:MET:HG3	1:B:2:GLN:N	2.26	0.51
1:B:98:ALA:HA	1:B:120:TRP:O	2.10	0.51
1:D:43:LEU:HD12	1:D:71:ILE:HD13	1.93	0.51
1:B:235:MET:HG2	1:B:236:SER:N	2.25	0.51
1:A:348:ARG:HG2	1:B:348:ARG:HG2	1.93	0.51
1:D:189:ARG:HH11	1:D:189:ARG:CB	2.23	0.51
1:A:25:PRO:HB2	1:C:186:PRO:HB3	1.91	0.51
1:A:6:VAL:HG13	1:A:235:MET:HG3	1.93	0.51
1:D:28:LYS:HE3	4:D:406:HOH:O	2.11	0.51
1:C:109:GLU:OE2	1:C:143:ARG:HD2	2.11	0.50
1:B:201:PRO:HG2	1:B:202:GLN:HE21	1.75	0.50
1:D:6:VAL:HG13	1:D:235:MET:HG3	1.92	0.50
1:C:43:LEU:HD12	1:C:71:ILE:HD13	1.93	0.50
1:B:182:CYS:HB3	1:B:189:ARG:HD3	1.93	0.50
1:D:93:GLN:HA	1:D:93:GLN:HE21	1.76	0.50

*Continued on next page...*

*Continued from previous page...*

Atom-1	Atom-2	Interatomic distance (Å)	Clash overlap (Å)
1:D:10:ARG:HE	1:D:48:THR:HG22	1.76	0.50
1:A:151:ARG:CG	1:A:151:ARG:HH21	2.21	0.50
1:C:43:LEU:CD1	1:C:71:ILE:HD13	2.42	0.50
1:A:169:GLY:O	1:A:173:LYS:HG3	2.12	0.50
1:B:10:ARG:HH21	1:B:48:THR:HG22	1.77	0.50
1:B:212:ILE:HG23	1:B:213:ILE:N	2.27	0.50
1:A:258:THR:HB	4:A:417:HOH:O	2.10	0.50
1:B:102:GLU:CD	1:B:143:ARG:HH22	2.16	0.49
1:C:98:ALA:HA	1:C:120:TRP:O	2.11	0.49
1:D:182:CYS:HB3	1:D:189:ARG:HD3	1.94	0.49
1:C:182:CYS:HB3	1:C:189:ARG:HD3	1.94	0.49
1:D:8:ILE:HG23	1:D:357:TYR:CD1	2.47	0.49
1:D:8:ILE:HG12	1:D:234:VAL:HG13	1.93	0.49
1:B:6:VAL:HG13	1:B:235:MET:HG3	1.94	0.49
1:D:238:THR:HB	4:D:376:HOH:O	2.12	0.49
1:C:289:LEU:HB2	1:C:323:ILE:HB	1.95	0.49
1:C:348:ARG:HG2	1:D:348:ARG:HG2	1.93	0.49
1:C:276:ASP:OD1	1:C:352:ARG:CD	2.60	0.49
1:B:93:GLN:HE21	1:B:93:GLN:HA	1.77	0.49
1:C:141:TYR:CE2	1:C:154:VAL:HG22	2.46	0.49
1:D:314:ALA:O	1:D:315:GLN:HB2	2.11	0.49
1:D:325:TRP:HB3	1:D:334:ILE:HD13	1.95	0.49
1:C:201:PRO:HG2	1:C:202:GLN:HE21	1.75	0.49
1:D:186:PRO:HG2	4:D:425:HOH:O	2.13	0.49
1:D:61:GLU:O	1:D:65:ARG:HG3	2.12	0.48
1:D:43:LEU:CD1	1:D:71:ILE:HD13	2.43	0.48
1:A:222:ASP:O	1:A:223:ARG:HG3	2.13	0.48
1:D:73:LYS:HE3	4:D:428:HOH:O	2.13	0.48
1:D:276:ASP:OD1	1:D:352:ARG:CD	2.61	0.48
1:A:305:MET:SD	1:B:129:ARG:HD3	2.53	0.48
1:D:29:MET:HE1	1:D:208:VAL:HG21	1.96	0.48
1:A:201:PRO:HG2	1:A:202:GLN:HE21	1.77	0.48
1:A:129:ARG:NH1	3:A:362:DCS:O	2.46	0.48
1:D:141:TYR:CE2	1:D:154:VAL:HG22	2.49	0.48
1:C:10:ARG:HE	1:C:48:THR:HG22	1.79	0.48
1:D:29:MET:HE1	4:D:439:HOH:O	2.14	0.48
1:D:109:GLU:OE2	1:D:143:ARG:HD2	2.14	0.48
1:D:43:LEU:HD21	1:D:47:ARG:HH21	1.78	0.48
1:C:102:GLU:CD	1:C:143:ARG:HH22	2.17	0.47
1:D:102:GLU:CD	1:D:143:ARG:HH22	2.16	0.47
1:A:105:LEU:O	1:A:109:GLU:HG3	2.13	0.47

*Continued on next page...*

*Continued from previous page...*

Atom-1	Atom-2	Interatomic distance (Å)	Clash overlap (Å)
1:B:141:TYR:CE2	1:B:154:VAL:HG22	2.49	0.47
1:C:32:VAL:O	4:C:451:HOH:O	2.20	0.47
1:A:1:MET:HG3	1:A:319:GLY:HA2	1.95	0.47
1:D:222:ASP:O	1:D:223:ARG:HG3	2.15	0.47
1:B:289:LEU:HB2	1:B:323:ILE:HB	1.96	0.47
1:D:98:ALA:HA	1:D:120:TRP:O	2.14	0.47
1:C:10:ARG:HE	1:C:48:THR:CG2	2.27	0.47
1:A:1:MET:N	1:B:82:PHE:CB	2.76	0.47
1:A:102:GLU:CD	1:A:143:ARG:HH22	2.18	0.47
1:A:96:HIS:ND1	4:A:365:HOH:O	2.33	0.47
1:D:10:ARG:HE	1:D:48:THR:CG2	2.27	0.47
1:B:276:ASP:OD1	1:B:352:ARG:CD	2.61	0.47
1:D:8:ILE:CG1	1:D:234:VAL:HG12	2.44	0.47
1:D:223:ARG:NH1	1:D:336:GLU:OE1	2.48	0.47
1:A:15:HIS:HE1	1:A:230:GLY:O	1.97	0.47
1:D:272:MET:O	1:D:306:ILE:HG13	2.15	0.47
1:C:10:ARG:HH21	1:C:48:THR:HG22	1.80	0.46
1:C:193:ALA:O	1:C:197:ILE:HG13	2.15	0.46
1:A:10:ARG:NH2	1:A:44:GLU:OE1	2.40	0.46
1:A:141:TYR:CE2	1:A:154:VAL:HG22	2.49	0.46
1:D:15:HIS:HE1	1:D:230:GLY:O	1.98	0.46
1:D:11:ARG:NH1	1:D:359:ASP:O	2.48	0.46
1:B:15:HIS:HE1	1:B:230:GLY:O	1.97	0.46
1:A:222:ASP:O	1:A:223:ARG:HG2	2.15	0.46
1:A:1:MET:H1	1:B:82:PHE:HB2	1.78	0.46
1:B:109:GLU:OE2	1:B:143:ARG:HD2	2.14	0.46
1:C:43:LEU:HD21	1:C:47:ARG:HH21	1.80	0.46
1:D:277:GLY:HA3	1:D:349:LEU:HA	1.98	0.46
1:D:289:LEU:HB2	1:D:323:ILE:HB	1.98	0.46
1:A:189:ARG:HH11	1:A:189:ARG:CB	2.23	0.46
1:C:189:ARG:NH1	1:C:205:PHE:CD2	2.84	0.46
1:C:93:GLN:HA	1:C:93:GLN:NE2	2.31	0.46
1:C:277:GLY:HA3	1:C:349:LEU:HA	1.98	0.46
1:A:93:GLN:HE21	1:A:93:GLN:HA	1.80	0.46
1:B:115:GLU:HB2	1:B:116:PRO:HD2	1.98	0.46
1:B:277:GLY:HA3	1:B:349:LEU:HA	1.99	0.45
1:C:189:ARG:HH11	1:C:189:ARG:CB	2.25	0.45
1:D:193:ALA:O	1:D:197:ILE:HG13	2.17	0.45
1:A:184:GLY:O	1:C:25:PRO:HG3	2.15	0.45
1:D:157:VAL:HA	1:D:190:SER:O	2.17	0.45
1:A:277:GLY:HA3	1:A:349:LEU:HA	1.99	0.45

*Continued on next page...*

*Continued from previous page...*

Atom-1	Atom-2	Interatomic distance (Å)	Clash overlap (Å)
1:A:189:ARG:NH1	1:A:205:PHE:CD2	2.85	0.45
1:D:101:ASN:OD1	1:D:104:GLN:HG3	2.17	0.45
1:D:153:PRO:HB2	4:D:425:HOH:O	2.17	0.45
1:A:300:ARG:NH1	4:A:477:HOH:O	2.49	0.45
1:A:43:LEU:HD21	1:A:47:ARG:HH21	1.81	0.45
1:C:276:ASP:OD1	1:D:59:ARG:NH2	2.49	0.44
1:D:29:MET:CE	4:D:439:HOH:O	2.65	0.44
1:D:8:ILE:HG13	1:D:234:VAL:CG1	2.47	0.44
1:D:10:ARG:HH21	1:D:48:THR:HG22	1.81	0.44
1:B:93:GLN:HA	1:B:93:GLN:NE2	2.32	0.44
1:A:101:ASN:OD1	1:A:104:GLN:HG3	2.18	0.44
1:D:93:GLN:HA	1:D:93:GLN:NE2	2.31	0.44
1:B:189:ARG:NH1	1:B:205:PHE:CD2	2.85	0.44
1:D:189:ARG:NH1	1:D:205:PHE:CD2	2.86	0.44
1:C:93:GLN:HE21	1:C:93:GLN:CA	2.31	0.44
1:A:16:ASN:O	1:A:20:LEU:HD22	2.18	0.44
1:C:108:LEU:HA	1:C:108:LEU:HD23	1.49	0.44
1:A:289:LEU:HB2	1:A:323:ILE:HB	2.00	0.44
1:B:10:ARG:HE	1:B:48:THR:HG22	1.82	0.43
1:A:34:LYS:HZ1	3:A:362:DCS:HB1	1.83	0.43
1:D:325:TRP:HB3	1:D:334:ILE:CD1	2.48	0.43
1:C:141:TYR:CE2	1:C:154:VAL:CG2	3.01	0.43
1:C:272:MET:O	1:C:306:ILE:HG13	2.18	0.43
1:D:194:SER:OG	1:D:213:ILE:HG22	2.18	0.43
3:C:362:DCS:C4A	3:C:362:DCS:O4P	2.67	0.43
1:C:252:PRO:HA	1:C:259:TRP:O	2.18	0.43
1:D:216:GLY:O	1:D:226:GLY:HA3	2.19	0.43
1:D:255:TYR:HB2	1:D:300:ARG:HD2	2.01	0.43
1:D:222:ASP:O	1:D:223:ARG:HG2	2.19	0.43
1:A:223:ARG:NH1	1:A:336:GLU:OE1	2.52	0.43
1:C:8:ILE:HG23	1:C:234:VAL:HG12	2.01	0.43
1:D:252:PRO:HA	1:D:259:TRP:O	2.18	0.43
1:B:115:GLU:HG2	4:B:564:HOH:O	2.18	0.43
3:C:362:DCS:O3	3:C:362:DCS:N	2.52	0.42
1:B:10:ARG:HE	1:B:48:THR:CG2	2.32	0.42
1:A:194:SER:OG	1:A:213:ILE:HG22	2.19	0.42
1:C:212:ILE:CG2	1:C:219:PRO:HB3	2.48	0.42
1:B:93:GLN:HE21	1:B:93:GLN:CA	2.31	0.42
1:A:93:GLN:NE2	1:A:93:GLN:HA	2.35	0.42
1:D:29:MET:HE1	1:D:208:VAL:CG2	2.50	0.42
1:B:8:ILE:HG23	1:B:234:VAL:HG12	2.01	0.42

*Continued on next page...*

*Continued from previous page...*

Atom-1	Atom-2	Interatomic distance (Å)	Clash overlap (Å)
1:A:255:TYR:HB2	1:A:300:ARG:HD2	2.02	0.42
1:B:106:ALA:O	1:B:110:GLU:HG2	2.19	0.42
1:C:193:ALA:HB1	3:C:362:DCS:H5A2	2.02	0.41
1:B:43:LEU:HD21	1:B:47:ARG:HH21	1.84	0.41
1:B:43:LEU:O	1:B:47:ARG:HG3	2.19	0.41
1:D:93:GLN:CA	1:D:93:GLN:HE21	2.32	0.41
1:C:10:ARG:NH2	1:C:44:GLU:OE1	2.40	0.41
3:C:362:DCS:HA	1:D:255:TYR:OH	2.20	0.41
1:A:353:VAL:HG23	1:A:353:VAL:O	2.20	0.41
1:B:252:PRO:HA	1:B:259:TRP:O	2.20	0.41
1:C:233:PRO:CG	4:C:439:HOH:O	2.69	0.41
1:B:272:MET:O	1:B:306:ILE:HG13	2.20	0.41
1:B:175:LEU:HA	1:B:175:LEU:HD23	1.94	0.41
1:C:106:ALA:O	1:C:110:GLU:HG2	2.21	0.41
1:D:10:ARG:NH2	1:D:44:GLU:OE1	2.41	0.41
1:C:194:SER:OG	1:C:213:ILE:HG22	2.21	0.41
1:D:77:LEU:HB3	4:D:372:HOH:O	2.21	0.41
1:D:33:VAL:HG21	4:D:392:HOH:O	2.20	0.41
1:C:157:VAL:HA	1:C:190:SER:O	2.21	0.41
1:C:158:SER:HB3	1:C:191:ILE:HG13	2.03	0.41
1:C:212:ILE:CG2	1:C:213:ILE:N	2.84	0.40
1:C:61:GLU:O	1:C:65:ARG:HG3	2.20	0.40
1:B:212:ILE:CG2	1:B:219:PRO:HB3	2.49	0.40
1:A:157:VAL:HA	1:A:190:SER:O	2.21	0.40
1:C:34:LYS:HB3	1:C:57:VAL:HA	2.03	0.40
1:D:212:ILE:CG2	1:D:219:PRO:HB3	2.48	0.40
1:D:8:ILE:C	1:D:8:ILE:HD13	2.41	0.40
1:D:14:ARG:HD2	4:D:403:HOH:O	2.20	0.40
1:B:44:GLU:O	1:B:48:THR:CG2	2.59	0.40
1:A:212:ILE:CG2	1:A:219:PRO:HB3	2.49	0.40
1:C:43:LEU:O	1:C:47:ARG:HG3	2.21	0.40
1:D:212:ILE:CG2	1:D:213:ILE:N	2.85	0.40
1:C:232:GLN:HA	1:C:233:PRO:HD3	1.86	0.40
1:D:43:LEU:O	1:D:47:ARG:HG3	2.22	0.40

There are no symmetry-related clashes.

## 5.3 Torsion angles

### 5.3.1 Protein backbone

In the following table, the Percentiles column shows the percent Ramachandran outliers of the chain as a percentile score with respect to all X-ray entries followed by that with respect to entries of similar resolution.

The Analysed column shows the number of residues for which the backbone conformation was analysed, and the total number of residues.

Mol	Chain	Analysed	Favoured	Allowed	Outliers	Percentiles	
1	A	356/379 (94%)	341 (96%)	14 (4%)	1 (0%)	46	63
1	B	356/379 (94%)	342 (96%)	14 (4%)	0	100	100
1	C	348/379 (92%)	333 (96%)	15 (4%)	0	100	100
1	D	354/379 (93%)	340 (96%)	14 (4%)	0	100	100
All	All	1414/1516 (93%)	1356 (96%)	57 (4%)	1 (0%)	56	74

All (1) Ramachandran outliers are listed below:

Mol	Chain	Res	Type
1	A	4	ALA

### 5.3.2 Protein sidechains

In the following table, the Percentiles column shows the percent sidechain outliers of the chain as a percentile score with respect to all X-ray entries followed by that with respect to entries of similar resolution.

The Analysed column shows the number of residues for which the sidechain conformation was analysed, and the total number of residues.

Mol	Chain	Analysed	Rotameric	Outliers	Percentiles	
1	A	286/303 (94%)	275 (96%)	11 (4%)	40	60
1	B	286/303 (94%)	275 (96%)	11 (4%)	40	60
1	C	281/303 (93%)	268 (95%)	13 (5%)	33	51
1	D	284/303 (94%)	272 (96%)	12 (4%)	36	56
All	All	1137/1212 (94%)	1090 (96%)	47 (4%)	37	57

All (47) residues with a non-rotameric sidechain are listed below:



Mol	Chain	Res	Type
1	A	1	MET
1	A	20	LEU
1	A	59	ARG
1	A	118	THR
1	A	151	ARG
1	A	154	VAL
1	A	175	LEU
1	A	214	LEU
1	A	263	ARG
1	A	288	VAL
1	A	352	ARG
1	B	2	GLN
1	B	17	LEU
1	B	48	THR
1	B	59	ARG
1	B	118	THR
1	B	154	VAL
1	B	167	LYS
1	B	214	LEU
1	B	263	ARG
1	B	288	VAL
1	B	333	ARG
1	C	17	LEU
1	C	48	THR
1	C	60	LEU
1	C	61	GLU
1	C	72	THR
1	C	89	THR
1	C	118	THR
1	C	154	VAL
1	C	175	LEU
1	C	214	LEU
1	C	263	ARG
1	C	288	VAL
1	C	359	ASP
1	D	8	ILE
1	D	17	LEU
1	D	48	THR
1	D	72	THR
1	D	89	THR
1	D	118	THR
1	D	154	VAL
1	D	175	LEU

*Continued on next page...*

*Continued from previous page...*

Mol	Chain	Res	Type
1	D	214	LEU
1	D	263	ARG
1	D	288	VAL
1	D	333	ARG

Some sidechains can be flipped to improve hydrogen bonding and reduce clashes. All (27) such sidechains are listed below:

Mol	Chain	Res	Type
1	A	2	GLN
1	A	15	HIS
1	A	93	GLN
1	A	100	HIS
1	A	188	GLN
1	A	202	GLN
1	B	15	HIS
1	B	93	GLN
1	B	100	HIS
1	B	142	HIS
1	B	146	GLN
1	B	152	GLN
1	B	188	GLN
1	B	202	GLN
1	C	93	GLN
1	C	100	HIS
1	C	146	GLN
1	C	152	GLN
1	C	188	GLN
1	C	202	GLN
1	D	15	HIS
1	D	93	GLN
1	D	100	HIS
1	D	146	GLN
1	D	152	GLN
1	D	188	GLN
1	D	202	GLN

### 5.3.3 RNA ⓘ

There are no RNA molecules in this entry.

## 5.4 Non-standard residues in protein, DNA, RNA chains ⓘ

4 non-standard protein/DNA/RNA residues are modelled in this entry.

In the following table, the Counts columns list the number of bonds (or angles) for which Mogul statistics could be retrieved, the number of bonds (or angles) that are observed in the model and the number of bonds (or angles) that are defined in the chemical component dictionary. The Link column lists molecule types, if any, to which the group is linked. The Z score for a bond length (or angle) is the number of standard deviations the observed value is removed from the expected value. A bond length (or angle) with  $|Z| > 2$  is considered an outlier worth inspection. RMSZ is the root-mean-square of all Z scores of the bond lengths (or angles).

Mol	Type	Chain	Res	Link	Bond lengths			Bond angles		
					Counts	RMSZ	$\# Z  > 2$	Counts	RMSZ	$\# Z  > 2$
1	KCX	A	122	1	7,11,12	0.54	0	7,12,14	1.45	2 (28%)
1	KCX	B	122	1	7,11,12	0.75	0	7,12,14	1.05	0
1	KCX	C	122	1	7,11,12	0.49	0	7,12,14	1.42	2 (28%)
1	KCX	D	122	1	7,11,12	0.52	0	7,12,14	1.41	1 (14%)

In the following table, the Chirals column lists the number of chiral outliers, the number of chiral centers analysed, the number of these observed in the model and the number defined in the chemical component dictionary. Similar counts are reported in the Torsion and Rings columns. '-' means no outliers of that kind were identified.

Mol	Type	Chain	Res	Link	Chirals	Torsions	Rings
1	KCX	A	122	1	-	0/6/10/12	0/0/0/0
1	KCX	B	122	1	-	0/6/10/12	0/0/0/0
1	KCX	C	122	1	-	0/6/10/12	0/0/0/0
1	KCX	D	122	1	-	0/6/10/12	0/0/0/0

There are no bond length outliers.

All (5) bond angle outliers are listed below:

Mol	Chain	Res	Type	Atoms	Z	Observed(°)	Ideal(°)
1	A	122	KCX	CE-NZ-CX	-2.14	121.06	123.49
1	C	122	KCX	CE-NZ-CX	-2.10	121.12	123.49
1	C	122	KCX	CD-CE-NZ	2.38	117.90	111.46
1	A	122	KCX	CD-CE-NZ	2.47	118.15	111.46
1	D	122	KCX	CD-CE-NZ	2.63	118.59	111.46

There are no chirality outliers.

There are no torsion outliers.

There are no ring outliers.

No monomer is involved in short contacts.

## 5.5 Carbohydrates [i](#)

There are no carbohydrates in this entry.

## 5.6 Ligand geometry [i](#)

10 ligands are modelled in this entry.

In the following table, the Counts columns list the number of bonds (or angles) for which Mogul statistics could be retrieved, the number of bonds (or angles) that are observed in the model and the number of bonds (or angles) that are defined in the chemical component dictionary. The Link column lists molecule types, if any, to which the group is linked. The Z score for a bond length (or angle) is the number of standard deviations the observed value is removed from the expected value. A bond length (or angle) with  $|Z| > 2$  is considered an outlier worth inspection. RMSZ is the root-mean-square of all Z scores of the bond lengths (or angles).

Mol	Type	Chain	Res	Link	Bond lengths			Bond angles		
					Counts	RMSZ	$\# Z  > 2$	Counts	RMSZ	$\# Z  > 2$
2	SO4	A	360	-	4,4,4	2.45	4 (100%)	6,6,6	0.94	1 (16%)
2	SO4	A	361	-	4,4,4	1.28	0	6,6,6	0.51	0
3	DCS	A	362	-	23,23,23	4.23	14 (60%)	24,33,33	2.78	12 (50%)
2	SO4	B	360	-	4,4,4	2.04	1 (25%)	6,6,6	0.45	0
2	SO4	B	361	-	4,4,4	1.84	1 (25%)	6,6,6	0.43	0
3	DCS	B	362	-	23,23,23	5.15	15 (65%)	24,33,33	3.21	13 (54%)
2	SO4	C	360	-	4,4,4	2.12	3 (75%)	6,6,6	0.84	0
2	SO4	C	361	-	4,4,4	1.52	0	6,6,6	0.62	0
3	DCS	C	362	-	23,23,23	0.96	0	24,33,33	1.33	2 (8%)
3	DCS	D	360	-	23,23,23	0.98	1 (4%)	24,33,33	1.47	4 (16%)

In the following table, the Chirals column lists the number of chiral outliers, the number of chiral centers analysed, the number of these observed in the model and the number defined in the chemical component dictionary. Similar counts are reported in the Torsion and Rings columns. '-' means no outliers of that kind were identified.

Mol	Type	Chain	Res	Link	Chirals	Torsions	Rings
2	SO4	A	360	-	-	0/0/0/0	0/0/0/0
2	SO4	A	361	-	-	0/0/0/0	0/0/0/0
3	DCS	A	362	-	1/1/3/5	0/10/21/21	0/2/2/2
2	SO4	B	360	-	-	0/0/0/0	0/0/0/0
2	SO4	B	361	-	-	0/0/0/0	0/0/0/0

*Continued on next page...*

*Continued from previous page...*

Mol	Type	Chain	Res	Link	Chirals	Torsions	Rings
3	DCS	B	362	-	1/1/3/5	0/10/21/21	0/2/2/2
2	SO4	C	360	-	-	0/0/0/0	0/0/0/0
2	SO4	C	361	-	-	0/0/0/0	0/0/0/0
3	DCS	C	362	-	1/1/3/5	0/10/21/21	0/2/2/2
3	DCS	D	360	-	1/1/3/5	0/10/21/21	0/2/2/2

All (39) bond length outliers are listed below:

Mol	Chain	Res	Type	Atoms	Z	Observed(Å)	Ideal(Å)
3	B	362	DCS	CA-C	-12.73	1.43	1.52
3	B	362	DCS	P-O3P	-10.86	1.15	1.54
3	B	362	DCS	P-O4P	-9.26	1.29	1.60
3	A	362	DCS	OG-ND	-7.95	1.28	1.45
3	A	362	DCS	C3-C2	-7.62	1.35	1.40
3	A	362	DCS	P-O4P	-7.59	1.34	1.60
3	A	362	DCS	P-O2P	-7.55	1.27	1.54
3	B	362	DCS	P-O2P	-7.33	1.28	1.54
3	B	362	DCS	OG-ND	-6.86	1.30	1.45
3	A	362	DCS	P-O3P	-5.86	1.33	1.54
3	A	362	DCS	C-ND	-5.75	1.27	1.34
3	B	362	DCS	C3-C2	-5.20	1.37	1.40
3	A	362	DCS	P-O1P	-5.10	1.34	1.51
3	A	362	DCS	CA-C	-4.85	1.49	1.52
3	B	362	DCS	P-O1P	-4.58	1.36	1.51
3	B	362	DCS	C4A-C4	-4.35	1.46	1.51
3	A	362	DCS	OG-CB	-4.28	1.36	1.44
3	B	362	DCS	C-ND	-4.20	1.29	1.34
3	B	362	DCS	OG-CB	-3.64	1.37	1.44
3	B	362	DCS	C6-N1	-3.58	1.26	1.34
3	A	362	DCS	C6-N1	-2.87	1.28	1.34
2	A	360	SO4	O2-S	-2.70	1.37	1.47
3	B	362	DCS	CA-N	-2.61	1.43	1.47
3	A	362	DCS	O3-C3	-2.61	1.30	1.37
2	A	360	SO4	O1-S	-2.59	1.38	1.47
2	B	360	SO4	O2-S	-2.53	1.38	1.47
3	A	362	DCS	CB-CA	-2.52	1.47	1.54
3	B	362	DCS	O3-C3	-2.33	1.31	1.37
2	C	360	SO4	O2-S	-2.33	1.39	1.47
2	A	360	SO4	O4-S	-2.28	1.39	1.47
3	A	362	DCS	C3-C4	-2.22	1.36	1.40
3	A	362	DCS	O-C	-2.22	1.19	1.23
3	B	362	DCS	CB-CA	-2.21	1.48	1.54

*Continued on next page...*

*Continued from previous page...*

Mol	Chain	Res	Type	Atoms	Z	Observed(Å)	Ideal(Å)
2	A	360	SO4	O3-S	-2.20	1.39	1.47
2	B	361	SO4	O2-S	-2.19	1.39	1.47
3	B	362	DCS	O4P-C5A	-2.18	1.35	1.44
2	C	360	SO4	O1-S	-2.15	1.39	1.47
3	D	360	DCS	C3-C2	-2.10	1.39	1.40
2	C	360	SO4	O3-S	-2.10	1.39	1.47

All (32) bond angle outliers are listed below:

Mol	Chain	Res	Type	Atoms	Z	Observed(°)	Ideal(°)
3	B	362	DCS	C4A-N-CA	-9.27	99.63	113.81
3	A	362	DCS	C4A-N-CA	-7.70	102.04	113.81
3	A	362	DCS	C2A-C2-C3	-6.03	113.76	121.04
3	C	362	DCS	C4A-N-CA	-4.51	106.91	113.81
3	B	362	DCS	O3P-P-O4P	-4.48	93.66	106.56
3	B	362	DCS	C2A-C2-C3	-3.85	116.40	121.04
3	B	362	DCS	C5A-C5-C6	-3.84	112.02	119.28
3	D	360	DCS	C4A-N-CA	-3.71	108.14	113.81
3	A	362	DCS	O-C-ND	-2.80	121.98	125.49
3	B	362	DCS	C3-C4-C5	-2.64	116.03	118.82
3	A	362	DCS	C3-C4-C5	-2.63	116.04	118.82
3	B	362	DCS	CB-CA-C	-2.45	99.07	104.69
3	A	362	DCS	O3P-P-O4P	-2.18	100.28	106.56
3	B	362	DCS	O2P-P-O4P	-2.15	100.37	106.56
3	A	362	DCS	CB-CA-C	-2.08	99.93	104.69
3	A	362	DCS	C4A-C4-C5	-2.05	117.88	119.71
3	D	360	DCS	O4P-C5A-C5	2.01	112.32	108.99
2	A	360	SO4	O4-S-O3	2.03	117.25	108.98
3	A	362	DCS	O3-C3-C4	2.06	124.27	118.11
3	B	362	DCS	O3-C3-C4	2.16	124.54	118.11
3	C	362	DCS	O4P-P-O1P	2.38	113.20	107.14
3	B	362	DCS	O-C-ND	2.47	128.59	125.49
3	B	362	DCS	O2P-P-O1P	2.52	118.70	110.58
3	A	362	DCS	C2A-C2-N1	2.69	123.92	117.95
3	A	362	DCS	C6-C5-C4	2.73	120.13	118.09
3	D	360	DCS	C4A-C4-C5	2.98	122.37	119.71
3	D	360	DCS	O4P-P-O1P	3.03	114.84	107.14
3	A	362	DCS	O4P-C5A-C5	3.42	114.65	108.99
3	B	362	DCS	C5A-C5-C4	3.67	128.96	121.89
3	B	362	DCS	O4P-C5A-C5	3.67	115.07	108.99
3	A	362	DCS	O2P-P-O1P	3.78	122.74	110.58
3	B	362	DCS	O4P-P-O1P	5.90	122.16	107.14

All (4) chirality outliers are listed below:

Mol	Chain	Res	Type	Atom
3	C	362	DCS	CA
3	D	360	DCS	CA
3	B	362	DCS	CA
3	A	362	DCS	CA

There are no torsion outliers.

There are no ring outliers.

4 monomers are involved in 21 short contacts:

Mol	Chain	Res	Type	Clashes	Symm-Clashes
3	A	362	DCS	3	0
3	B	362	DCS	6	0
3	C	362	DCS	5	0
3	D	360	DCS	7	0

## 5.7 Other polymers [i](#)

There are no such residues in this entry.

## 5.8 Polymer linkage issues [i](#)

There are no chain breaks in this entry.

## 6 Fit of model and data

### 6.1 Protein, DNA and RNA chains

In the following table, the column labelled ‘#RSRZ> 2’ contains the number (and percentage) of RSRZ outliers, followed by percent RSRZ outliers for the chain as percentile scores relative to all X-ray entries and entries of similar resolution. The OWAB column contains the minimum, median, 95<sup>th</sup> percentile and maximum values of the occupancy-weighted average B-factor per residue. The column labelled ‘Q< 0.9’ lists the number of (and percentage) of residues with an average occupancy less than 0.9.

Mol	Chain	Analysed	<RSRZ>	#RSRZ>2	OWAB(Å <sup>2</sup> )	Q<0.9
1	A	358/379 (94%)	-0.61	1 (0%) 94 94	2, 10, 24, 43	0
1	B	358/379 (94%)	-0.58	1 (0%) 94 94	2, 11, 26, 53	0
1	C	352/379 (92%)	-0.10	2 (0%) 90 90	13, 27, 41, 52	0
1	D	356/379 (93%)	0.07	4 (1%) 82 82	11, 30, 47, 53	0
All	All	1424/1516 (93%)	-0.31	8 (0%) 90 90	2, 20, 41, 53	0

All (8) RSRZ outliers are listed below:

Mol	Chain	Res	Type	RSRZ
1	D	142	HIS	3.5
1	D	223	ARG	2.7
1	D	150	VAL	2.5
1	A	1	MET	2.5
1	B	1	MET	2.5
1	D	184	GLY	2.4
1	C	69	GLY	2.3
1	C	314	ALA	2.0

### 6.2 Non-standard residues in protein, DNA, RNA chains

In the following table, the Atoms column lists the number of modelled atoms in the group and the number defined in the chemical component dictionary. LLDF column lists the quality of electron density of the group with respect to its neighbouring residues in protein, DNA or RNA chains. The B-factors column lists the minimum, median, 95<sup>th</sup> percentile and maximum values of B factors of atoms in the group. The column labelled ‘Q< 0.9’ lists the number of atoms with occupancy less than 0.9.

Mol	Type	Chain	Res	Atoms	RSCC	RSR	LLDF	B-factors(Å <sup>2</sup> )	Q<0.9
1	KCX	B	122	12/13	0.96	0.14	-	8,10,14,16	0
1	KCX	A	122	12/13	0.96	0.13	-	12,16,21,21	0

*Continued on next page...*



*Continued from previous page...*

Mol	Type	Chain	Res	Atoms	RSCC	RSR	LLDF	B-factors( $\text{\AA}^2$ )	Q<0.9
1	KCX	D	122	12/13	0.88	0.17	-	28,31,38,38	0
1	KCX	C	122	12/13	0.95	0.10	-	17,23,28,28	0

### 6.3 Carbohydrates [i](#)

There are no carbohydrates in this entry.

### 6.4 Ligands [i](#)

In the following table, the Atoms column lists the number of modelled atoms in the group and the number defined in the chemical component dictionary. LLDF column lists the quality of electron density of the group with respect to its neighbouring residues in protein, DNA or RNA chains. The B-factors column lists the minimum, median, 95<sup>th</sup> percentile and maximum values of B factors of atoms in the group. The column labelled 'Q< 0.9' lists the number of atoms with occupancy less than 0.9.

Mol	Type	Chain	Res	Atoms	RSCC	RSR	LLDF	B-factors( $\text{\AA}^2$ )	Q<0.9
3	DCS	D	360	22/22	0.95	0.16	1.00	20,28,31,31	0
3	DCS	B	362	22/22	0.97	0.11	0.32	9,13,16,16	0
3	DCS	A	362	22/22	0.98	0.11	0.18	6,15,18,19	0
2	SO4	A	360	5/5	0.98	0.12	0.14	53,53,54,55	0
2	SO4	B	360	5/5	0.98	0.14	0.02	56,56,58,58	0
3	DCS	C	362	22/22	0.95	0.13	-0.04	24,29,31,31	0
2	SO4	C	360	5/5	0.95	0.22	-	63,64,64,65	0
2	SO4	C	361	5/5	0.96	0.13	-	69,69,70,70	0
2	SO4	A	361	5/5	0.92	0.20	-	83,83,84,84	0
2	SO4	B	361	5/5	0.95	0.20	-	73,74,74,75	0

### 6.5 Other polymers [i](#)

There are no such residues in this entry.