



Full wwPDB X-ray Structure Validation Report ⓘ

Feb 1, 2016 – 05:38 AM GMT

PDB ID : 2RJR
Title : Substrate mimic bound to SgTAM
Authors : Montavon, T.J.; Christianson, C.V.; Bruner, S.D.
Deposited on : 2007-10-15
Resolution : 2.10 Å(reported)

This is a Full wwPDB X-ray Structure Validation Report for a publicly released PDB entry.
We welcome your comments at validation@mail.wwpdb.org
A user guide is available at
<http://wwpdb.org/validation/2016/XrayValidationReportHelp>
with specific help available everywhere you see the ⓘ symbol.

The following versions of software and data (see [references ⓘ](#)) were used in the production of this report:

MolProbity : 4.02b-467
Mogul : 1.7 (RC4), CSD as536be (2015)
Xtriage (Phenix) : 1.9-1692
EDS : rb-20026688
Percentile statistics : 20151230.v01 (using entries in the PDB archive December 30th 2015)
Refmac : 5.8.0135
CCP4 : 6.5.0
Ideal geometry (proteins) : Engh & Huber (2001)
Ideal geometry (DNA, RNA) : Parkinson et al. (1996)
Validation Pipeline (wwPDB-VP) : trunk26865

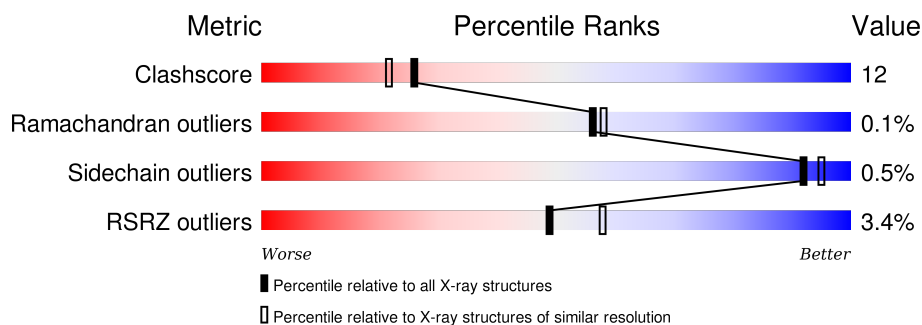
1 Overall quality at a glance

The following experimental techniques were used to determine the structure:

X-RAY DIFFRACTION

The reported resolution of this entry is 2.10 Å.

Percentile scores (ranging between 0-100) for global validation metrics of the entry are shown in the following graphic. The table shows the number of entries on which the scores are based.



Metric	Whole archive (#Entries)	Similar resolution (#Entries, resolution range(Å))
Clashscore	102246	4460 (2.10-2.10)
Ramachandran outliers	100387	4413 (2.10-2.10)
Sidechain outliers	100360	4414 (2.10-2.10)
RSRZ outliers	91569	3948 (2.10-2.10)

The table below summarises the geometric issues observed across the polymeric chains and their fit to the electron density. The red, orange, yellow and green segments on the lower bar indicate the fraction of residues that contain outliers for ≥ 3 , 2, 1 and 0 types of geometric quality criteria. A grey segment represents the fraction of residues that are not modelled. The numeric value for each fraction is indicated below the corresponding segment, with a dot representing fractions $\leq 5\%$. The upper red bar (where present) indicates the fraction of residues that have poor fit to the electron density. The numeric value is given above the bar.

Mol	Chain	Length	Quality of chain
1	A	537	<div> <div>3%</div> <div>74%</div> <div>24%</div> <div>.</div> </div>
1	B	537	<div> <div>4%</div> <div>80%</div> <div>17%</div> <div>..</div> </div>

The following table lists non-polymeric compounds, carbohydrate monomers and non-standard residues in protein, DNA, RNA chains that are outliers for geometric or electron-density-fit criteria:

Mol	Type	Chain	Res	Chirality	Geometry	Clashes	Electron density
2	295	A	1001	-	-	-	X

2 Entry composition [i](#)

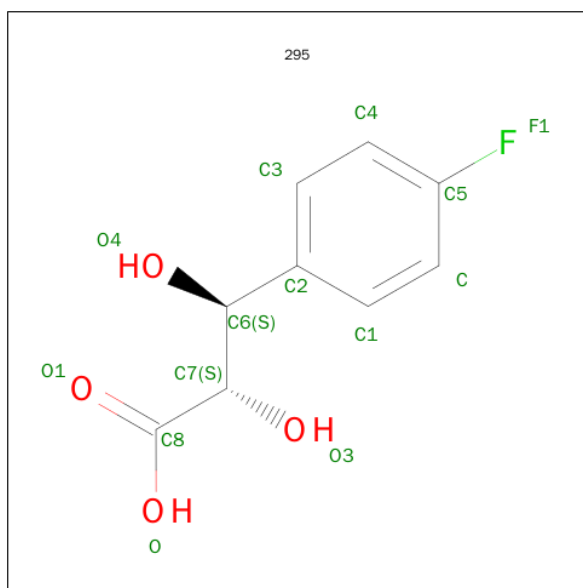
There are 3 unique types of molecules in this entry. The entry contains 8501 atoms, of which 0 are hydrogens and 0 are deuteriums.

In the tables below, the ZeroOcc column contains the number of atoms modelled with zero occupancy, the AltConf column contains the number of residues with at least one atom in alternate conformation and the Trace column contains the number of residues modelled with at most 2 atoms.

- Molecule 1 is a protein called Tyrosine aminomutase.

Mol	Chain	Residues	Atoms					ZeroOcc	AltConf	Trace
1	A	526	Total	C	N	O	S	0	0	0
			4007	2503	727	769	8			
1	B	526	Total	C	N	O	S	0	0	0
			4007	2503	727	769	8			

- Molecule 2 is (2S,3S)-3-(4-FLUOROPHENYL)-2,3-DIHYDROXYPROPANOIC ACID (three-letter code: 295) (formula: C₉H₉FO₄).



Mol	Chain	Residues	Atoms				ZeroOcc	AltConf
2	A	1	Total	C	F	O	0	0
			14	9	1	4		

- Molecule 3 is water.

Mol	Chain	Residues	Atoms		ZeroOcc	AltConf
3	A	236	Total	O	0	0
			236	236		

Continued on next page...

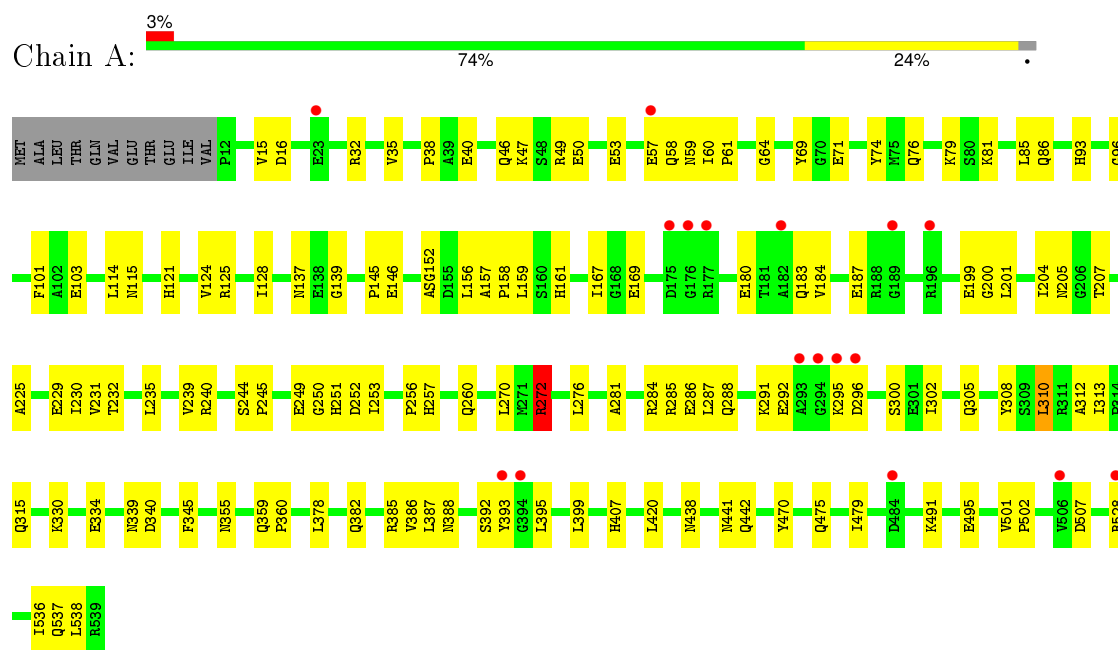
Continued from previous page...

Mol	Chain	Residues	Atoms		ZeroOcc	AltConf
3	B	237	Total	O	0	0
			237	237		

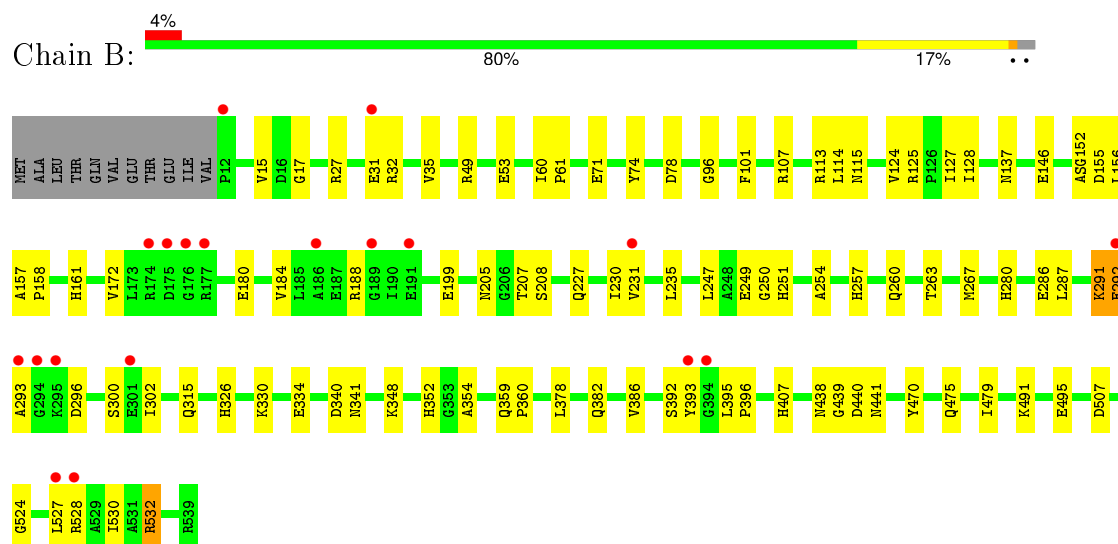
3 Residue-property plots [i](#)

These plots are drawn for all protein, RNA and DNA chains in the entry. The first graphic for a chain summarises the proportions of errors displayed in the second graphic. The second graphic shows the sequence view annotated by issues in geometry and electron density. Residues are color-coded according to the number of geometric quality criteria for which they contain at least one outlier: green = 0, yellow = 1, orange = 2 and red = 3 or more. A red dot above a residue indicates a poor fit to the electron density ($RSRZ > 2$). Stretches of 2 or more consecutive residues without any outlier are shown as a green connector. Residues present in the sample, but not in the model, are shown in grey.

• Molecule 1: Tyrosine aminomutase



• Molecule 1: Tyrosine aminomutase



4 Data and refinement statistics

Property	Value	Source
Space group	P 21 21 2	Depositor
Cell constants a, b, c, α , β , γ	92.25Å 145.65Å 75.11Å 90.00° 90.00° 90.00°	Depositor
Resolution (Å)	25.00 – 2.10 24.55 – 2.10	Depositor EDS
% Data completeness (in resolution range)	95.5 (25.00-2.10) 95.4 (24.55-2.10)	Depositor EDS
R_{merge}	0.17	Depositor
R_{sym}	(Not available)	Depositor
$\langle I/\sigma(I) \rangle$ ¹	7.33 (at 2.10Å)	Xtriage
Refinement program	CNS	Depositor
R, R_{free}	0.173 , 0.212 0.174 , (Not available)	Depositor DCC
R_{free} test set	No test flags present.	DCC
Wilson B-factor (Å ²)	21.1	Xtriage
Anisotropy	0.333	Xtriage
Bulk solvent k_{sol} (e/Å ³), B_{sol} (Å ²)	0.44 , 56.0	EDS
Estimated twinning fraction	No twinning to report.	Xtriage
L-test for twinning ²	$\langle L \rangle = 0.48$, $\langle L^2 \rangle = 0.32$	Xtriage
Outliers	0 of 59031 reflections	Xtriage
F_o, F_c correlation	0.95	EDS
Total number of atoms	8501	wwPDB-VP
Average B, all atoms (Å ²)	25.0	wwPDB-VP

Xtriage's analysis on translational NCS is as follows: *The analyses of the Patterson function reveals a significant off-origin peak that is 20.64 % of the origin peak, indicating pseudo translational symmetry. The chance of finding a peak of this or larger height randomly in a structure without pseudo translational symmetry is equal to 8.3260e-03. The detected translational NCS is most likely also responsible for the elevated intensity ratio.*

¹Intensities estimated from amplitudes.

²Theoretical values of $\langle |L| \rangle$, $\langle L^2 \rangle$ for acentric reflections are 0.5, 0.375 respectively for untwinned datasets, and 0.333, 0.2 for perfectly twinned datasets.

5 Model quality

5.1 Standard geometry

Bond lengths and bond angles in the following residue types are not validated in this section: 295, MDO

The Z score for a bond length (or angle) is the number of standard deviations the observed value is removed from the expected value. A bond length (or angle) with $|Z| > 5$ is considered an outlier worth inspection. RMSZ is the root-mean-square of all Z scores of the bond lengths (or angles).

Mol	Chain	Bond lengths		Bond angles	
		RMSZ	$\# Z > 5$	RMSZ	$\# Z > 5$
1	A	0.43	5/4053 (0.1%)	0.58	2/5490 (0.0%)
1	B	0.51	8/4053 (0.2%)	0.58	1/5490 (0.0%)
All	All	0.47	13/8106 (0.2%)	0.58	3/10980 (0.0%)

Chiral center outliers are detected by calculating the chiral volume of a chiral center and verifying if the center is modelled as a planar moiety or with the opposite hand. A planarity outlier is detected by checking planarity of atoms in a peptide group, atoms in a mainchain group or atoms of a sidechain that are expected to be planar.

Mol	Chain	#Chirality outliers	#Planarity outliers
1	A	1	0

All (13) bond length outliers are listed below:

Mol	Chain	Res	Type	Atoms	Z	Observed(Å)	Ideal(Å)
1	B	292	GLU	CD-OE2	-11.42	1.13	1.25
1	B	292	GLU	CD-OE1	-10.07	1.14	1.25
1	B	292	GLU	CG-CD	-7.79	1.40	1.51
1	B	291	LYS	CE-NZ	-6.14	1.33	1.49
1	A	388	ASN	C-O	-5.97	1.12	1.23
1	B	292	GLU	CB-CG	-5.65	1.41	1.52
1	A	272	ARG	CB-CG	-5.56	1.37	1.52
1	B	180	GLU	CB-CG	-5.55	1.41	1.52
1	A	272	ARG	C-O	-5.49	1.12	1.23
1	A	47	LYS	CD-CE	-5.45	1.37	1.51
1	A	47	LYS	C-O	-5.38	1.13	1.23
1	B	532	ARG	C-O	-5.36	1.13	1.23
1	B	532	ARG	CB-CG	-5.07	1.38	1.52

All (3) bond angle outliers are listed below:

Mol	Chain	Res	Type	Atoms	Z	Observed(°)	Ideal(°)
1	B	293	ALA	N-CA-C	6.81	129.39	111.00
1	A	272	ARG	NE-CZ-NH2	6.03	123.32	120.30
1	A	310	LEU	CB-CG-CD2	5.28	119.98	111.00

All (1) chirality outliers are listed below:

Mol	Chain	Res	Type	Atom
1	A	537	GLN	CA

There are no planarity outliers.

5.2 Too-close contacts ⓘ

In the following table, the Non-H and H(model) columns list the number of non-hydrogen atoms and hydrogen atoms in the chain respectively. The H(added) column lists the number of hydrogen atoms added and optimized by MolProbity. The Clashes column lists the number of clashes within the asymmetric unit, whereas Symm-Clashes lists symmetry related clashes.

Mol	Chain	Non-H	H(model)	H(added)	Clashes	Symm-Clashes
1	A	4007	0	4033	127	0
1	B	4007	0	4034	92	0
2	A	14	0	7	4	0
3	A	236	0	0	11	0
3	B	237	0	0	3	0
All	All	8501	0	8074	199	0

The all-atom clashscore is defined as the number of clashes found per 1000 atoms (including hydrogen atoms). The all-atom clashscore for this structure is 12.

All (199) close contacts within the same asymmetric unit are listed below, sorted by their clash magnitude.

Atom-1	Atom-2	Interatomic distance (Å)	Clash overlap (Å)
1:A:272:ARG:HG3	1:A:272:ARG:HH11	1.03	1.15
1:A:537:GLN:HG3	1:A:538:LEU:N	1.45	1.14
1:B:235:LEU:HD11	1:B:386:VAL:HG11	1.30	1.06
1:A:32:ARG:HH12	1:A:139:GLY:HA2	1.19	1.05
1:A:537:GLN:HG3	1:A:538:LEU:H	1.01	1.01
1:A:536:ILE:O	1:A:537:GLN:HB2	1.62	0.99
1:A:272:ARG:HG3	1:A:272:ARG:NH1	1.71	0.97
1:A:537:GLN:CG	1:A:538:LEU:H	1.77	0.96
1:A:35:VAL:H	1:A:137:ASN:HD21	1.17	0.93

Continued on next page...

Continued from previous page...

Atom-1	Atom-2	Interatomic distance (Å)	Clash overlap (Å)
1:A:272:ARG:CG	1:A:272:ARG:HH11	1.80	0.93
1:A:284:ARG:HD2	1:B:60:ILE:HD12	1.55	0.89
1:A:284:ARG:HG2	1:A:288:GLN:HE21	1.38	0.86
1:B:172:VAL:HG21	1:B:184:VAL:HG21	1.61	0.82
1:B:35:VAL:H	1:B:137:ASN:HD21	1.28	0.80
1:A:305:GLN:HE22	1:B:341:ASN:HD21	1.30	0.79
1:B:96:GLY:H	1:B:161:HIS:HE1	1.29	0.79
1:A:312:ALA:HB2	1:B:354:ALA:CB	2.14	0.77
1:A:32:ARG:NH1	1:A:139:GLY:HA2	1.97	0.76
1:B:227:GLN:CG	1:B:527:LEU:HG	2.15	0.76
1:B:172:VAL:CG2	1:B:184:VAL:HG21	2.16	0.76
1:A:125:ARG:HD3	1:A:199:GLU:OE2	1.87	0.75
1:A:536:ILE:O	1:A:537:GLN:CB	2.34	0.74
1:A:96:GLY:H	1:A:161:HIS:HE1	1.33	0.73
1:B:235:LEU:HD11	1:B:386:VAL:CG1	2.13	0.73
1:B:71:GLU:H	1:B:438:ASN:HD21	1.35	0.73
1:A:58:GLN:HB2	1:A:60:ILE:HG13	1.71	0.72
1:B:286:GLU:HG2	1:B:302:ILE:HD13	1.72	0.72
1:A:491:LYS:O	1:A:495:GLU:HG2	1.89	0.72
1:A:251:HIS:HD2	1:A:260:GLN:HE21	1.37	0.71
1:B:17:GLY:H	1:B:115:ASN:ND2	1.88	0.71
1:A:407:HIS:HD2	1:A:507:ASP:H	1.41	0.69
1:A:284:ARG:HD2	1:B:60:ILE:CD1	2.23	0.68
1:A:537:GLN:CG	1:A:538:LEU:N	2.30	0.68
1:A:71:GLU:H	1:A:438:ASN:HD21	1.41	0.68
1:A:284:ARG:HG2	1:A:288:GLN:NE2	2.07	0.68
1:B:158:PRO:HG3	3:B:685:HOH:O	1.94	0.67
1:B:491:LYS:O	1:B:495:GLU:HG3	1.94	0.67
1:B:251:HIS:HD2	1:B:260:GLN:HE21	1.40	0.66
1:A:40:GLU:HG3	3:A:1225:HOH:O	1.95	0.66
1:B:407:HIS:HD2	1:B:507:ASP:H	1.44	0.66
1:A:528:ARG:HH11	1:A:528:ARG:HG3	1.61	0.66
1:B:528:ARG:NH2	3:B:626:HOH:O	2.29	0.66
1:B:49:ARG:O	1:B:53:GLU:HG3	1.96	0.66
1:B:227:GLN:HG2	1:B:527:LEU:HG	1.79	0.65
1:A:167:ILE:HG13	1:A:169:GLU:HG3	1.78	0.65
1:A:251:HIS:CD2	1:A:260:GLN:HE21	2.15	0.64
1:B:15:VAL:HG11	1:B:114:LEU:HG	1.80	0.64
1:A:355:ASN:HD22	1:B:315:GLN:HE21	1.46	0.64
1:A:69:TYR:CE1	1:A:85:LEU:HD11	2.33	0.64
1:B:287:LEU:HD13	1:B:302:ILE:HB	1.80	0.64

Continued on next page...

Continued from previous page...

Atom-1	Atom-2	Interatomic distance (Å)	Clash overlap (Å)
1:B:207:THR:OG1	1:B:334:GLU:OE2	2.13	0.63
1:A:305:GLN:HE21	1:B:352:HIS:HB3	1.63	0.62
1:A:60:ILE:HG23	1:A:61:PRO:HD2	1.81	0.62
1:B:286:GLU:HG2	1:B:302:ILE:CD1	2.29	0.62
1:A:355:ASN:ND2	1:B:315:GLN:HE21	1.98	0.62
1:A:281:ALA:O	1:A:285:ARG:HG3	1.99	0.61
1:A:158:PRO:HG3	3:A:1019:HOH:O	1.99	0.61
1:B:15:VAL:HG13	1:B:115:ASN:HD22	1.67	0.60
1:A:378:LEU:O	1:A:382:GLN:HG3	2.02	0.60
1:A:207:THR:H	1:A:339:ASN:HD22	1.47	0.60
1:B:124:VAL:CG2	1:B:128:ILE:HG13	2.31	0.60
1:A:475:GLN:HE21	1:A:479:ILE:HD11	1.66	0.59
1:B:251:HIS:CD2	1:B:260:GLN:HE21	2.20	0.59
1:A:93:HIS:NE2	2:A:1001:295:H4	2.17	0.59
1:A:295:LYS:HA	3:A:1121:HOH:O	2.03	0.58
1:A:296:ASP:HA	1:B:78:ASP:HB2	1.85	0.58
1:A:69:TYR:HE1	1:A:85:LEU:CD1	2.17	0.58
1:A:292:GLU:HB2	1:A:295:LYS:CE	2.34	0.58
1:A:287:LEU:HD13	1:A:302:ILE:HB	1.86	0.58
1:B:71:GLU:H	1:B:438:ASN:ND2	2.02	0.58
1:A:292:GLU:HB2	1:A:295:LYS:HE2	1.86	0.57
1:B:396:PRO:HG3	1:B:479:ILE:HG21	1.86	0.57
1:A:312:ALA:HA	1:A:315:GLN:OE1	2.04	0.57
1:B:184:VAL:O	1:B:188:ARG:HG3	2.04	0.56
2:A:1001:295:O	2:A:1001:295:O4	2.23	0.56
3:A:1178:HOH:O	1:B:280:HIS:HE1	1.87	0.56
1:A:312:ALA:HB2	1:B:354:ALA:HB1	1.86	0.55
1:B:330:LYS:HE2	1:B:330:LYS:HA	1.87	0.55
1:A:308:TYR:OH	1:B:152:MDO:HB21	2.07	0.55
1:B:231:VAL:HB	1:B:470:TYR:CE1	2.42	0.55
1:B:524:GLY:O	1:B:528:ARG:HG3	2.07	0.54
1:A:74:TYR:HB2	1:B:300:SER:O	2.07	0.54
1:A:239:VAL:CG2	1:A:393:TYR:HB3	2.38	0.54
1:A:159:LEU:HB3	1:A:204:ILE:HA	1.90	0.53
1:A:32:ARG:HH21	1:A:103:GLU:CD	2.11	0.53
1:A:313:ILE:N	1:A:313:ILE:HD12	2.24	0.53
1:A:96:GLY:H	1:A:161:HIS:CE1	2.21	0.52
1:A:121:HIS:HE1	3:A:1118:HOH:O	1.92	0.52
1:A:205:ASN:O	1:A:340:ASP:HA	2.09	0.52
1:A:287:LEU:HD23	1:B:61:PRO:HB3	1.91	0.52
1:B:230:ILE:CD1	1:B:527:LEU:HD23	2.40	0.52

Continued on next page...

Continued from previous page...

Atom-1	Atom-2	Interatomic distance (Å)	Clash overlap (Å)
1:B:17:GLY:H	1:B:115:ASN:HD21	1.54	0.51
1:A:232:THR:HG21	1:A:313:ILE:HG12	1.92	0.51
1:B:96:GLY:H	1:B:161:HIS:CE1	2.17	0.51
1:B:155:ASP:O	1:B:158:PRO:HD2	2.09	0.51
1:A:157:ALA:HB3	1:A:158:PRO:HD3	1.92	0.51
1:A:235:LEU:O	1:A:235:LEU:HD23	2.11	0.51
1:B:230:ILE:HG12	1:B:530:ILE:HD12	1.94	0.50
1:A:71:GLU:H	1:A:438:ASN:ND2	2.07	0.50
1:A:334:GLU:OE1	1:B:257:HIS:HE1	1.94	0.50
1:B:230:ILE:HD12	1:B:527:LEU:HD23	1.93	0.50
1:A:528:ARG:NH1	1:A:528:ARG:HG3	2.26	0.50
1:A:86:GLN:HE21	1:A:200:GLY:H	1.60	0.50
1:B:439:GLY:O	1:B:440:ASP:HB2	2.11	0.50
1:A:291:LYS:NZ	3:A:1217:HOH:O	2.43	0.50
1:A:60:ILE:CG2	1:A:61:PRO:HD2	2.41	0.50
1:A:96:GLY:HA3	1:A:145:PRO:HG2	1.93	0.49
1:B:124:VAL:HG23	1:B:199:GLU:HG2	1.94	0.49
1:A:183:GLN:O	1:A:187:GLU:HB2	2.12	0.49
1:A:53:GLU:O	1:A:57:GLU:HG2	2.13	0.49
1:A:407:HIS:CD2	1:A:507:ASP:H	2.27	0.49
1:B:152:MDO:O	1:B:156:LEU:N	2.39	0.49
1:B:475:GLN:HE21	1:B:479:ILE:HD11	1.78	0.49
1:A:101:PHE:CE2	1:A:146:GLU:HG2	2.48	0.49
1:B:230:ILE:HG12	1:B:530:ILE:CD1	2.43	0.49
1:A:239:VAL:O	1:A:239:VAL:HG22	2.12	0.49
1:A:235:LEU:C	1:A:235:LEU:HD23	2.33	0.49
1:B:113:ARG:HD2	1:B:208:SER:OG	2.13	0.48
1:A:300:SER:O	1:B:74:TYR:HB2	2.13	0.48
1:A:286:GLU:HG2	1:A:302:ILE:HD13	1.95	0.48
1:B:101:PHE:CE2	1:B:146:GLU:HG2	2.49	0.48
1:A:93:HIS:HE2	2:A:1001:295:C5	2.28	0.47
1:A:15:VAL:HG11	1:A:114:LEU:HG	1.97	0.47
1:A:81:LYS:HZ2	1:B:296:ASP:HB3	1.79	0.47
1:A:124:VAL:CG1	1:A:128:ILE:HG13	2.45	0.47
1:A:330:LYS:HE2	1:A:330:LYS:HA	1.96	0.47
1:B:124:VAL:HG22	1:B:128:ILE:HG13	1.96	0.47
1:B:359:GLN:N	1:B:360:PRO:HD2	2.29	0.47
1:B:292:GLU:OE1	1:B:292:GLU:N	2.48	0.46
1:A:85:LEU:O	1:A:85:LEU:HD12	2.15	0.46
1:B:392:SER:HB2	1:B:395:LEU:HB2	1.97	0.46
1:A:225:ALA:O	1:A:229:GLU:HG3	2.15	0.46

Continued on next page...

Continued from previous page...

Atom-1	Atom-2	Interatomic distance (Å)	Clash overlap (Å)
1:B:396:PRO:CG	1:B:479:ILE:HG21	2.45	0.46
1:B:157:ALA:HB3	1:B:158:PRO:HD3	1.98	0.46
1:B:263:THR:O	1:B:267:MET:HG2	2.16	0.45
1:A:239:VAL:HG23	1:A:393:TYR:HB3	1.97	0.45
1:A:81:LYS:NZ	1:B:296:ASP:HB3	2.31	0.45
1:A:76:GLN:HB3	1:B:291:LYS:HE3	1.99	0.45
1:A:310:LEU:HA	1:A:313:ILE:HD11	1.99	0.45
1:A:59:ASN:ND2	1:A:79:LYS:HG2	2.31	0.45
3:A:1136:HOH:O	1:B:348:LYS:HE3	2.16	0.45
1:B:205:ASN:HD21	1:B:341:ASN:HB3	1.80	0.45
1:A:257:HIS:HD2	1:B:330:LYS:NZ	2.14	0.45
1:A:231:VAL:HB	1:A:470:TYR:CE1	2.52	0.45
1:A:288:GLN:HG3	1:B:61:PRO:CD	2.46	0.45
1:A:239:VAL:HG22	1:A:393:TYR:HB3	1.99	0.45
1:B:249:GLU:HG2	1:B:250:GLY:N	2.32	0.45
1:B:247:LEU:HD23	3:B:584:HOH:O	2.16	0.44
1:B:227:GLN:CG	1:B:527:LEU:CG	2.92	0.44
1:B:407:HIS:CD2	1:B:507:ASP:H	2.30	0.44
1:B:205:ASN:O	1:B:340:ASP:HA	2.17	0.44
1:B:32:ARG:HD2	1:B:107:ARG:NE	2.33	0.44
1:B:230:ILE:CD1	1:B:530:ILE:HD12	2.47	0.44
1:A:93:HIS:NE2	2:A:1001:295:C4	2.80	0.44
1:A:313:ILE:H	1:A:313:ILE:HD12	1.81	0.44
1:A:244:SER:HB3	1:A:245:PRO:HD3	1.99	0.44
1:A:330:LYS:NZ	1:B:257:HIS:HD2	2.15	0.44
1:A:46:GLN:O	1:A:50:GLU:HG3	2.17	0.44
1:A:249:GLU:HB3	3:A:1136:HOH:O	2.17	0.44
1:A:15:VAL:HG23	1:A:35:VAL:HG13	1.99	0.44
1:B:438:ASN:HD22	1:B:441:ASN:HB3	1.83	0.44
1:A:86:GLN:HE21	1:A:200:GLY:N	2.16	0.44
1:B:392:SER:O	1:B:393:TYR:HB2	2.17	0.44
1:A:64:GLY:HA3	1:A:201:LEU:HD22	2.00	0.44
1:B:227:GLN:HG3	1:B:527:LEU:HG	1.99	0.44
1:A:152:MDO:O	1:A:156:LEU:N	2.49	0.44
1:A:32:ARG:HH12	1:A:139:GLY:CA	2.09	0.43
1:B:125:ARG:HB3	1:B:127:ILE:HG22	2.00	0.43
1:A:442:GLN:HE21	1:A:442:GLN:HB3	1.57	0.43
1:A:101:PHE:CZ	1:A:146:GLU:HG2	2.54	0.43
1:A:180:GLU:O	1:A:184:VAL:HG23	2.19	0.43
1:B:15:VAL:CG1	1:B:115:ASN:HD22	2.31	0.42
1:B:15:VAL:CG2	1:B:35:VAL:HG13	2.50	0.42

Continued on next page...

Continued from previous page...

Atom-1	Atom-2	Interatomic distance (Å)	Clash overlap (Å)
1:A:285:ARG:NH1	3:A:1114:HOH:O	2.52	0.42
1:A:249:GLU:HG2	1:A:250:GLY:N	2.34	0.42
1:A:287:LEU:O	1:A:291:LYS:HG3	2.19	0.42
1:A:249:GLU:O	1:A:253:ILE:HB	2.20	0.42
1:B:15:VAL:HG23	1:B:35:VAL:HG13	2.01	0.42
1:A:49:ARG:NE	1:A:125:ARG:HG3	2.33	0.42
1:A:386:VAL:HG13	1:A:387:LEU:HD23	2.00	0.42
1:A:32:ARG:HD2	3:A:1113:HOH:O	2.18	0.42
1:A:501:VAL:HA	1:A:502:PRO:HD3	1.84	0.42
1:A:438:ASN:HD22	1:A:441:ASN:HB3	1.85	0.42
1:A:16:ASP:HB3	1:A:38:PRO:HG3	2.01	0.42
1:A:392:SER:HB2	1:A:395:LEU:HD12	2.02	0.41
1:A:230:ILE:HA	1:A:270:LEU:HD13	2.02	0.41
1:A:125:ARG:HD3	1:A:199:GLU:CD	2.41	0.41
3:A:1020:HOH:O	1:B:326:HIS:HE1	2.03	0.41
1:A:359:GLN:N	1:A:360:PRO:HD2	2.36	0.41
1:A:420:LEU:HA	1:A:420:LEU:HD23	1.83	0.41
1:A:399:LEU:O	1:A:479:ILE:HD11	2.21	0.41
1:B:125:ARG:CB	1:B:127:ILE:HG22	2.50	0.41
1:A:69:TYR:CE1	1:A:85:LEU:CD1	2.95	0.41
1:A:69:TYR:HE1	1:A:85:LEU:HD12	1.85	0.41
1:A:345:PHE:HZ	1:B:254:ALA:HB2	1.86	0.41
1:B:27:ARG:O	1:B:31:GLU:HB3	2.21	0.41
1:A:240:ARG:HH11	1:A:276:LEU:HD23	1.86	0.41
1:B:378:LEU:O	1:B:382:GLN:HG3	2.21	0.41
1:A:15:VAL:CG1	1:A:115:ASN:HA	2.51	0.40

There are no symmetry-related clashes.

5.3 Torsion angles [i](#)

5.3.1 Protein backbone [i](#)

In the following table, the Percentiles column shows the percent Ramachandran outliers of the chain as a percentile score with respect to all X-ray entries followed by that with respect to entries of similar resolution.

The Analysed column shows the number of residues for which the backbone conformation was analysed, and the total number of residues.

Mol	Chain	Analysed	Favoured	Allowed	Outliers	Percentiles	
1	A	523/537 (97%)	503 (96%)	19 (4%)	1 (0%)	52	53
1	B	523/537 (97%)	502 (96%)	21 (4%)	0	100	100
All	All	1046/1074 (97%)	1005 (96%)	40 (4%)	1 (0%)	56	58

All (1) Ramachandran outliers are listed below:

Mol	Chain	Res	Type
1	A	256	PRO

5.3.2 Protein sidechains ⓘ

In the following table, the Percentiles column shows the percent sidechain outliers of the chain as a percentile score with respect to all X-ray entries followed by that with respect to entries of similar resolution.

The Analysed column shows the number of residues for which the sidechain conformation was analysed, and the total number of residues.

Mol	Chain	Analysed	Rotameric	Outliers	Percentiles	
1	A	415/425 (98%)	412 (99%)	3 (1%)	88	92
1	B	415/425 (98%)	414 (100%)	1 (0%)	95	97
All	All	830/850 (98%)	826 (100%)	4 (0%)	92	95

All (4) residues with a non-rotameric sidechain are listed below:

Mol	Chain	Res	Type
1	A	252	ASP
1	A	272	ARG
1	A	385	ARG
1	B	532	ARG

Some sidechains can be flipped to improve hydrogen bonding and reduce clashes. All (31) such sidechains are listed below:

Mol	Chain	Res	Type
1	A	46	GLN
1	A	86	GLN
1	A	121	HIS
1	A	134	GLN
1	A	137	ASN
1	A	161	HIS

Continued on next page...

Continued from previous page...

Mol	Chain	Res	Type
1	A	227	GLN
1	A	251	HIS
1	A	257	HIS
1	A	288	GLN
1	A	305	GLN
1	A	326	HIS
1	A	339	ASN
1	A	355	ASN
1	A	407	HIS
1	A	438	ASN
1	A	442	GLN
1	B	115	ASN
1	B	121	HIS
1	B	137	ASN
1	B	161	HIS
1	B	183	GLN
1	B	205	ASN
1	B	227	GLN
1	B	251	HIS
1	B	257	HIS
1	B	280	HIS
1	B	326	HIS
1	B	407	HIS
1	B	438	ASN
1	B	442	GLN

5.3.3 RNA ⓘ

There are no RNA molecules in this entry.

5.4 Non-standard residues in protein, DNA, RNA chains ⓘ

2 non-standard protein/DNA/RNA residues are modelled in this entry.

In the following table, the Counts columns list the number of bonds (or angles) for which Mogul statistics could be retrieved, the number of bonds (or angles) that are observed in the model and the number of bonds (or angles) that are defined in the chemical component dictionary. The Link column lists molecule types, if any, to which the group is linked. The Z score for a bond length (or angle) is the number of standard deviations the observed value is removed from the expected value. A bond length (or angle) with $|Z| > 2$ is considered an outlier worth inspection. RMSZ is the root-mean-square of all Z scores of the bond lengths (or angles).

Mol	Type	Chain	Res	Link	Bond lengths			Bond angles		
					Counts	RMSZ	# Z > 2	Counts	RMSZ	# Z > 2
1	MDO	A	152	1,2	11,13,14	2.45	4 (36%)	13,18,20	2.65	2 (15%)
1	MDO	B	152	1	11,13,14	2.45	4 (36%)	13,18,20	2.86	2 (15%)

In the following table, the Chirals column lists the number of chiral outliers, the number of chiral centers analysed, the number of these observed in the model and the number defined in the chemical component dictionary. Similar counts are reported in the Torsion and Rings columns. '-' means no outliers of that kind were identified.

Mol	Type	Chain	Res	Link	Chirals	Torsions	Rings
1	MDO	A	152	1,2	-	0/4/23/24	0/1/1/1
1	MDO	B	152	1	-	0/4/23/24	0/1/1/1

All (8) bond length outliers are listed below:

Mol	Chain	Res	Type	Atoms	Z	Observed(Å)	Ideal(Å)
1	B	152	MDO	C2-N3	-3.10	1.33	1.39
1	A	152	MDO	C2-N3	-3.07	1.33	1.39
1	A	152	MDO	CA2-N2	-2.47	1.33	1.39
1	B	152	MDO	CA2-N2	-2.46	1.33	1.39
1	A	152	MDO	C1-N3	-2.15	1.33	1.37
1	B	152	MDO	C1-N3	-2.14	1.33	1.37
1	B	152	MDO	O2-C2	6.29	1.36	1.23
1	A	152	MDO	O2-C2	6.32	1.36	1.23

All (4) bond angle outliers are listed below:

Mol	Chain	Res	Type	Atoms	Z	Observed(°)	Ideal(°)
1	B	152	MDO	O2-C2-CA2	-7.86	126.70	130.95
1	A	152	MDO	O2-C2-CA2	-7.04	127.14	130.95
1	A	152	MDO	CA2-C2-N3	5.69	106.36	103.39
1	B	152	MDO	CA2-C2-N3	5.95	106.50	103.39

There are no chirality outliers.

There are no torsion outliers.

There are no ring outliers.

2 monomers are involved in 3 short contacts:

Mol	Chain	Res	Type	Clashes	Symm-Clashes
1	A	152	MDO	1	0
1	B	152	MDO	2	0

5.5 Carbohydrates

There are no carbohydrates in this entry.

5.6 Ligand geometry

1 ligand is modelled in this entry.

In the following table, the Counts columns list the number of bonds (or angles) for which Mogul statistics could be retrieved, the number of bonds (or angles) that are observed in the model and the number of bonds (or angles) that are defined in the chemical component dictionary. The Link column lists molecule types, if any, to which the group is linked. The Z score for a bond length (or angle) is the number of standard deviations the observed value is removed from the expected value. A bond length (or angle) with $|Z| > 2$ is considered an outlier worth inspection. RMSZ is the root-mean-square of all Z scores of the bond lengths (or angles).

Mol	Type	Chain	Res	Link	Bond lengths			Bond angles		
					Counts	RMSZ	$\# Z > 2$	Counts	RMSZ	$\# Z > 2$
2	295	A	1001	1	11,14,14	1.94	2 (18%)	16,19,19	1.22	1 (6%)

In the following table, the Chirals column lists the number of chiral outliers, the number of chiral centers analysed, the number of these observed in the model and the number defined in the chemical component dictionary. Similar counts are reported in the Torsion and Rings columns. '-' means no outliers of that kind were identified.

Mol	Type	Chain	Res	Link	Chirals	Torsions	Rings
2	295	A	1001	1	-	0/8/12/12	0/1/1/1

All (2) bond length outliers are listed below:

Mol	Chain	Res	Type	Atoms	Z	Observed(Å)	Ideal(Å)
2	A	1001	295	F1-C5	-2.64	1.30	1.36
2	A	1001	295	O4-C6	5.23	1.53	1.42

All (1) bond angle outliers are listed below:

Mol	Chain	Res	Type	Atoms	Z	Observed(°)	Ideal(°)
2	A	1001	295	C4-C5-C	-2.54	119.21	122.87

There are no chirality outliers.

There are no torsion outliers.

There are no ring outliers.

1 monomer is involved in 4 short contacts:

Mol	Chain	Res	Type	Clashes	Symm-Clashes
2	A	1001	295	4	0

5.7 Other polymers [i](#)

There are no such residues in this entry.

5.8 Polymer linkage issues [i](#)

There are no chain breaks in this entry.

6 Fit of model and data ⓘ

6.1 Protein, DNA and RNA chains ⓘ

In the following table, the column labelled ‘#RSRZ> 2’ contains the number (and percentage) of RSRZ outliers, followed by percent RSRZ outliers for the chain as percentile scores relative to all X-ray entries and entries of similar resolution. The OWAB column contains the minimum, median, 95th percentile and maximum values of the occupancy-weighted average B-factor per residue. The column labelled ‘Q< 0.9’ lists the number of (and percentage) of residues with an average occupancy less than 0.9.

Mol	Chain	Analysed	<RSRZ>	#RSRZ>2		OWAB(Å ²)	Q<0.9
1	A	525/537 (97%)	-0.08	17 (3%)	51 60	12, 23, 40, 55	0
1	B	525/537 (97%)	-0.15	19 (3%)	46 55	11, 21, 41, 59	0
All	All	1050/1074 (97%)	-0.12	36 (3%)	49 58	11, 22, 41, 59	0

All (36) RSRZ outliers are listed below:

Mol	Chain	Res	Type	RSRZ
1	A	175	ASP	4.7
1	B	294	GLY	4.7
1	A	176	GLY	4.1
1	B	393	TYR	4.0
1	B	186	ALA	3.9
1	A	189	GLY	3.9
1	A	177	ARG	3.8
1	B	177	ARG	3.7
1	B	528	ARG	3.6
1	B	394	GLY	3.6
1	B	293	ALA	3.4
1	A	295	LYS	3.2
1	A	196	ARG	3.1
1	B	295	LYS	3.1
1	B	175	ASP	3.0
1	B	31	GLU	3.0
1	A	294	GLY	2.9
1	B	176	GLY	2.8
1	B	174	ARG	2.8
1	B	527	LEU	2.7
1	A	506	VAL	2.7
1	B	301	GLU	2.6
1	A	393	TYR	2.5
1	A	57	GLU	2.4

Continued on next page...

Continued from previous page...

Mol	Chain	Res	Type	RSRZ
1	A	528	ARG	2.4
1	B	191	GLU	2.3
1	A	484	ASP	2.3
1	A	296	ASP	2.3
1	A	293	ALA	2.2
1	A	23	GLU	2.2
1	B	292	GLU	2.1
1	B	231	VAL	2.1
1	A	394	GLY	2.1
1	B	189	GLY	2.1
1	A	182	ALA	2.0
1	B	12	PRO	2.0

6.2 Non-standard residues in protein, DNA, RNA chains ⓘ

In the following table, the Atoms column lists the number of modelled atoms in the group and the number defined in the chemical component dictionary. LLDF column lists the quality of electron density of the group with respect to its neighbouring residues in protein, DNA or RNA chains. The B-factors column lists the minimum, median, 95th percentile and maximum values of B factors of atoms in the group. The column labelled 'Q< 0.9' lists the number of atoms with occupancy less than 0.9.

Mol	Type	Chain	Res	Atoms	RSCC	RSR	LLDF	B-factors(Å ²)	Q<0.9
1	MDO	A	152	13/14	0.92	0.12	-	20,23,28,29	0
1	MDO	B	152	13/14	0.81	0.16	-	19,23,27,29	0

6.3 Carbohydrates ⓘ

There are no carbohydrates in this entry.

6.4 Ligands ⓘ

In the following table, the Atoms column lists the number of modelled atoms in the group and the number defined in the chemical component dictionary. LLDF column lists the quality of electron density of the group with respect to its neighbouring residues in protein, DNA or RNA chains. The B-factors column lists the minimum, median, 95th percentile and maximum values of B factors of atoms in the group. The column labelled 'Q< 0.9' lists the number of atoms with occupancy less than 0.9.

Mol	Type	Chain	Res	Atoms	RSCC	RSR	LLDF	B-factors(Å ²)	Q<0.9
2	295	A	1001	14/14	0.43	0.62	22.30	42,44,46,46	0

6.5 Other polymers

There are no such residues in this entry.