



Full wwPDB X-ray Structure Validation Report ⓘ

Jan 31, 2016 – 09:59 PM GMT

PDB ID : 1RKY
Title : PPLO + Xe
Authors : Guss, J.M.; Duff, A.P.
Deposited on : 2003-11-24
Resolution : 1.68 Å(reported)

This is a Full wwPDB X-ray Structure Validation Report for a publicly released PDB entry.
We welcome your comments at validation@mail.wwpdb.org
A user guide is available at
<http://wwpdb.org/validation/2016/XrayValidationReportHelp>
with specific help available everywhere you see the ⓘ symbol.

The following versions of software and data (see [references ⓘ](#)) were used in the production of this report:

MolProbity : 4.02b-467
Mogul : 1.7 (RC4), CSD as536be (2015)
Xtriage (Phenix) : 1.9-1692
EDS : rb-20026688
Percentile statistics : 20151230.v01 (using entries in the PDB archive December 30th 2015)
Refmac : 5.8.0135
CCP4 : 6.5.0
Ideal geometry (proteins) : Engh & Huber (2001)
Ideal geometry (DNA, RNA) : Parkinson et al. (1996)
Validation Pipeline (wwPDB-VP) : trunk26865

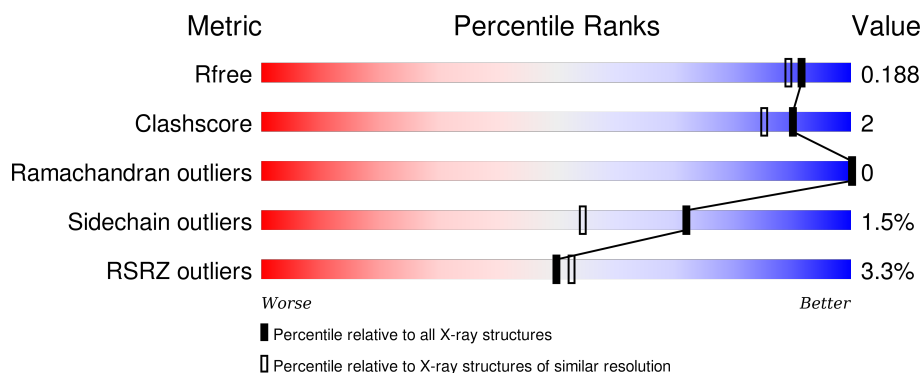
1 Overall quality at a glance

The following experimental techniques were used to determine the structure:

X-RAY DIFFRACTION

The reported resolution of this entry is 1.68 Å.

Percentile scores (ranging between 0-100) for global validation metrics of the entry are shown in the following graphic. The table shows the number of entries on which the scores are based.



Metric	Whole archive (#Entries)	Similar resolution (#Entries, resolution range(Å))
R_{free}	91344	4802 (1.70-1.66)
Clashscore	102246	5317 (1.70-1.66)
Ramachandran outliers	100387	5225 (1.70-1.66)
Sidechain outliers	100360	5224 (1.70-1.66)
RSRZ outliers	91569	4813 (1.70-1.66)

The table below summarises the geometric issues observed across the polymeric chains and their fit to the electron density. The red, orange, yellow and green segments on the lower bar indicate the fraction of residues that contain outliers for ≥ 3 , 2, 1 and 0 types of geometric quality criteria. A grey segment represents the fraction of residues that are not modelled. The numeric value for each fraction is indicated below the corresponding segment, with a dot representing fractions $\leq 5\%$. The upper red bar (where present) indicates the fraction of residues that have poor fit to the electron density. The numeric value is given above the bar.

Mol	Chain	Length	Quality of chain
1	A	747	<div> <div>3%</div> <div>91%</div> <div>7% ..</div> </div>

The following table lists non-polymeric compounds, carbohydrate monomers and non-standard residues in protein, DNA, RNA chains that are outliers for geometric or electron-density-fit criteria:

Mol	Type	Chain	Res	Chirality	Geometry	Clashes	Electron density
2	NAG	A	1081[A]	-	-	-	X

Continued on next page...

Continued from previous page...

Mol	Type	Chain	Res	Chirality	Geometry	Clashes	Electron density
2	NAG	A	1081[B]	-	-	-	X
9	XE	A	901	-	-	X	-
9	XE	A	907	-	-	X	-

2 Entry composition

There are 10 unique types of molecules in this entry. The entry contains 6853 atoms, of which 0 are hydrogens and 0 are deuteriums.

In the tables below, the ZeroOcc column contains the number of atoms modelled with zero occupancy, the AltConf column contains the number of residues with at least one atom in alternate conformation and the Trace column contains the number of residues modelled with at most 2 atoms.

- Molecule 1 is a protein called lysyl oxidase.

Mol	Chain	Residues	Atoms					ZeroOcc	AltConf	Trace
1	A	735	Total	C	N	O	S	2	49	0
			6087	3861	974	1236	16			

There are 10 discrepancies between the modelled and reference sequences:

Chain	Residue	Modelled	Actual	Comment	Reference
A	314	VAL	ILE	CONFLICT	GB 13936870
A	338	ASP	GLU	CONFLICT	GB 13936870
A	417	SER	ALA	CONFLICT	GB 13936870
A	478	TPQ	TYR	MODIFIED RESIDUE	GB 13936870
A	549	GLN	LYS	CONFLICT	GB 13936870
A	577	PHE	LEU	CONFLICT	GB 13936870
A	579	ASN	LYS	CONFLICT	GB 13936870
A	650	THR	GLU	CONFLICT	GB 13936870
A	758	VAL	LEU	CONFLICT	GB 13936870
A	761	ALA	PRO	CONFLICT	GB 13936870

- Molecule 2 is SUGAR (N-ACETYL-D-GLUCOSAMINE) (three-letter code: NAG) (formula: C₈H₁₅NO₆).



Mol	Chain	Residues	Atoms				ZeroOcc	AltConf
2	A	1	Total	C	N	O	0	1
			28	16	2	10		
2	A	1	Total	C	N	O	0	0
			14	8	1	5		
2	A	1	Total	C	N	O	0	0
			14	8	1	5		
2	A	1	Total	C	N	O	0	0
			14	8	1	5		

- Molecule 3 is a polymer of unknown type called SUGAR (3-MER).

Mol	Chain	Residues	Atoms				ZeroOcc	AltConf
3	A	3	Total	C	N	O	0	0
			39	22	2	15		

- Molecule 4 is COPPER (II) ION (three-letter code: CU) (formula: Cu).

Mol	Chain	Residues	Atoms		ZeroOcc	AltConf
4	A	1	Total	Cu	0	0
			1	1		

- Molecule 5 is CALCIUM ION (three-letter code: CA) (formula: Ca).

Mol	Chain	Residues	Atoms		ZeroOcc	AltConf
5	A	2	Total	Ca	0	0
			2	2		

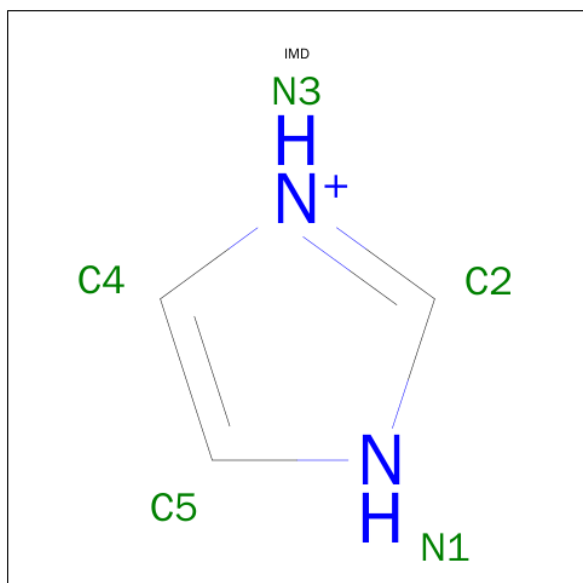
- Molecule 6 is MAGNESIUM ION (three-letter code: MG) (formula: Mg).

Mol	Chain	Residues	Atoms		ZeroOcc	AltConf
6	A	3	Total	Mg	0	0
			3	3		

- Molecule 7 is CHLORIDE ION (three-letter code: CL) (formula: Cl).

Mol	Chain	Residues	Atoms		ZeroOcc	AltConf
7	A	6	Total	Cl	0	0
			6	6		

- Molecule 8 is IMIDAZOLE (three-letter code: IMD) (formula: C₃H₅N₂).



Mol	Chain	Residues	Atoms			ZeroOcc	AltConf
8	A	1	Total	C	N	0	0
			5	3	2		

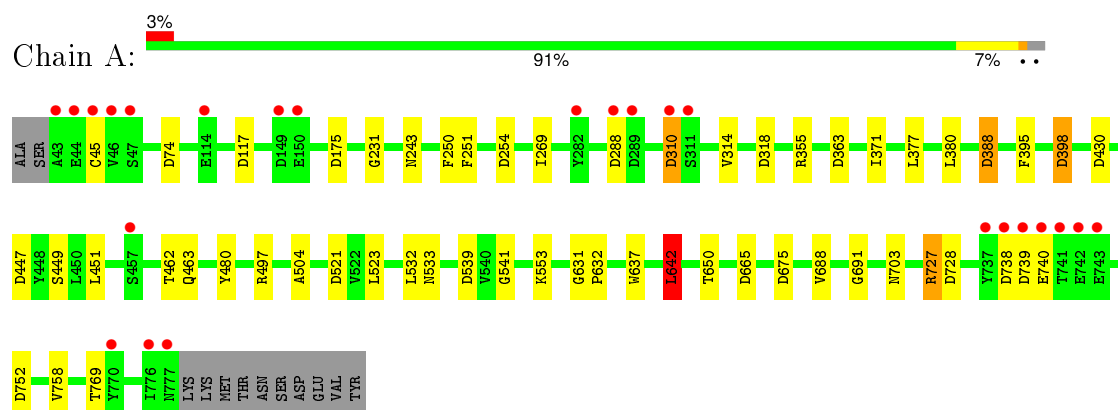
- Molecule 9 is XENON (three-letter code: XE) (formula: Xe).

Mol	Chain	Residues	Atoms		ZeroOcc	AltConf
9	A	8	Total	Xe	0	0
			8	8		

- Molecule 10 is water.

Mol	Chain	Residues	Atoms		ZeroOcc	AltConf
10	A	632	Total 632	O 632	0	0

- Molecule 1: lysyl oxidase



4 Data and refinement statistics

Property	Value	Source
Space group	C 1 2 1	Depositor
Cell constants a, b, c, α , β , γ	140.14Å 66.70Å 108.62Å 90.00° 119.24° 90.00°	Depositor
Resolution (Å)	31.47 – 1.68 31.59 – 1.68	Depositor EDS
% Data completeness (in resolution range)	87.7 (31.47-1.68) 87.7 (31.59-1.68)	Depositor EDS
R_{merge}	0.09	Depositor
R_{sym}	(Not available)	Depositor
$\langle I/\sigma(I) \rangle$ ¹	1.63 (at 1.68Å)	Xtriage
Refinement program	REFMAC 5.1.24	Depositor
R, R_{free}	0.151 , 0.182 0.161 , 0.188	Depositor DCC
R_{free} test set	1705 reflections (1.99%)	DCC
Wilson B-factor (Å ²)	23.9	Xtriage
Anisotropy	0.076	Xtriage
Bulk solvent k_{sol} (e/Å ³), B_{sol} (Å ²)	0.35 , 47.4	EDS
Estimated twinning fraction	No twinning to report.	Xtriage
L-test for twinning ²	$\langle L \rangle = 0.50$, $\langle L^2 \rangle = 0.33$	Xtriage
Outliers	0 of 182513 reflections	Xtriage
F_o, F_c correlation	0.97	EDS
Total number of atoms	6853	wwPDB-VP
Average B, all atoms (Å ²)	33.0	wwPDB-VP

Xtriage's analysis on translational NCS is as follows: *The largest off-origin peak in the Patterson function is 4.72% of the height of the origin peak. No significant pseudotranslation is detected.*

¹Intensities estimated from amplitudes.

²Theoretical values of $\langle |L| \rangle$, $\langle L^2 \rangle$ for acentric reflections are 0.5, 0.375 respectively for untwinned datasets, and 0.333, 0.2 for perfectly twinned datasets.

5 Model quality

5.1 Standard geometry

Bond lengths and bond angles in the following residue types are not validated in this section: MG, BMA, NAG, CL, CA, XE, TPQ, CU, IMD

The Z score for a bond length (or angle) is the number of standard deviations the observed value is removed from the expected value. A bond length (or angle) with $|Z| > 5$ is considered an outlier worth inspection. RMSZ is the root-mean-square of all Z scores of the bond lengths (or angles).

Mol	Chain	Bond lengths		Bond angles	
		RMSZ	$\# Z > 5$	RMSZ	$\# Z > 5$
1	A	0.59	0/6412	0.83	22/8732 (0.3%)

There are no bond length outliers.

All (22) bond angle outliers are listed below:

Mol	Chain	Res	Type	Atoms	Z	Observed(°)	Ideal(°)
1	A	642	LEU	CA-CB-CG	7.82	133.29	115.30
1	A	288	ASP	CB-CG-OD2	6.56	124.20	118.30
1	A	521[A]	ASP	CB-CG-OD2	6.43	124.09	118.30
1	A	521[B]	ASP	CB-CG-OD2	6.43	124.09	118.30
1	A	430	ASP	CB-CG-OD2	6.29	123.96	118.30
1	A	310	ASP	CB-CG-OD2	6.21	123.89	118.30
1	A	539	ASP	CB-CG-OD1	6.18	123.86	118.30
1	A	175	ASP	CB-CG-OD2	6.13	123.81	118.30
1	A	254	ASP	CB-CG-OD2	5.88	123.59	118.30
1	A	665	ASP	CB-CG-OD2	5.87	123.58	118.30
1	A	675	ASP	CB-CG-OD2	5.76	123.49	118.30
1	A	388	ASP	CB-CG-OD2	5.69	123.42	118.30
1	A	398	ASP	CB-CG-OD2	5.63	123.36	118.30
1	A	727	ARG	NE-CZ-NH1	5.60	123.10	120.30
1	A	497	ARG	NE-CZ-NH1	5.46	123.03	120.30
1	A	363	ASP	CB-CG-OD2	5.38	123.14	118.30
1	A	447	ASP	CB-CG-OD2	5.36	123.12	118.30
1	A	728	ASP	CB-CG-OD2	5.31	123.08	118.30
1	A	738	ASP	CB-CG-OD2	5.20	122.98	118.30
1	A	752	ASP	CB-CG-OD2	5.18	122.96	118.30
1	A	117	ASP	CB-CG-OD2	5.16	122.94	118.30
1	A	74	ASP	CB-CG-OD2	5.01	122.81	118.30

There are no chirality outliers.

There are no planarity outliers.

5.2 Too-close contacts

In the following table, the Non-H and H(model) columns list the number of non-hydrogen atoms and hydrogen atoms in the chain respectively. The H(added) column lists the number of hydrogen atoms added and optimized by MolProbity. The Clashes column lists the number of clashes within the asymmetric unit, whereas Symm-Clashes lists symmetry related clashes.

Mol	Chain	Non-H	H(model)	H(added)	Clashes	Symm-Clashes
1	A	6087	0	5599	28	0
2	A	70	0	65	0	0
3	A	39	0	34	0	0
4	A	1	0	0	0	0
5	A	2	0	0	0	0
6	A	3	0	0	0	0
7	A	6	0	0	0	0
8	A	5	0	5	0	0
9	A	8	0	0	9	0
10	A	632	0	0	4	0
All	All	6853	0	5703	28	0

The all-atom clashscore is defined as the number of clashes found per 1000 atoms (including hydrogen atoms). The all-atom clashscore for this structure is 2.

All (28) close contacts within the same asymmetric unit are listed below, sorted by their clash magnitude.

Atom-1	Atom-2	Interatomic distance (Å)	Clash overlap (Å)
1:A:371[A]:ILE:HD12	9:A:901:XE:XE	1.76	1.63
1:A:532:LEU:CD1	9:A:907:XE:XE	2.31	1.56
1:A:371[A]:ILE:CD1	9:A:901:XE:XE	2.30	1.56
1:A:371[A]:ILE:HD11	9:A:901:XE:XE	2.07	1.23
1:A:532:LEU:HD11	9:A:907:XE:XE	2.12	1.19
1:A:532:LEU:HD13	9:A:907:XE:XE	2.09	1.16
1:A:541[A]:GLY:O	10:A:2627:HOH:O	1.66	1.11
1:A:532:LEU:HD12	9:A:907:XE:XE	2.35	1.05
1:A:463:GLN:NE2	10:A:2438:HOH:O	2.31	0.63
1:A:691:GLY:HA2	9:A:907:XE:XE	2.76	0.63
1:A:45:CYS:SG	1:A:758:VAL:HG13	2.39	0.62
1:A:553:LYS:HG2	10:A:2625:HOH:O	2.01	0.61
1:A:380[B]:LEU:HD21	1:A:480:TYR:CZ	2.38	0.58
1:A:380[B]:LEU:HD12	1:A:532:LEU:CD2	2.38	0.53

Continued on next page...

Continued from previous page...

Atom-1	Atom-2	Interatomic distance (Å)	Clash overlap (Å)
1:A:377:LEU:HD21	1:A:380[A]:LEU:HD11	1.92	0.52
1:A:451:LEU:HD12	1:A:451:LEU:C	2.31	0.51
1:A:380[B]:LEU:HD22	1:A:398:ASP:OD2	2.11	0.49
1:A:532:LEU:HD11	9:A:908:XE:XE	2.93	0.47
1:A:650:THR:HG23	10:A:2620:HOH:O	2.17	0.44
1:A:631:GLY:N	1:A:632:PRO:HD3	2.34	0.43
1:A:642:LEU:HD22	1:A:688:VAL:HG22	2.01	0.43
1:A:314:VAL:HG13	1:A:318:ASP:HB3	2.01	0.43
1:A:727:ARG:HA	1:A:727:ARG:CZ	2.49	0.42
1:A:231:GLY:HA3	1:A:251:PHE:CE1	2.54	0.42
1:A:504:ALA:CB	1:A:523:LEU:HD11	2.49	0.42
1:A:449[B]:SER:HB3	1:A:462:THR:O	2.20	0.41
1:A:533:ASN:HB2	1:A:637:TRP:CE3	2.56	0.40
1:A:250:PHE:HB2	1:A:269:ILE:HB	2.03	0.40

There are no symmetry-related clashes.

5.3 Torsion angles [i](#)

5.3.1 Protein backbone [i](#)

In the following table, the Percentiles column shows the percent Ramachandran outliers of the chain as a percentile score with respect to all X-ray entries followed by that with respect to entries of similar resolution.

The Analysed column shows the number of residues for which the backbone conformation was analysed, and the total number of residues.

Mol	Chain	Analysed	Favoured	Allowed	Outliers	Percentiles	
1	A	776/747 (104%)	754 (97%)	22 (3%)	0	100	100

There are no Ramachandran outliers to report.

5.3.2 Protein sidechains [i](#)

In the following table, the Percentiles column shows the percent sidechain outliers of the chain as a percentile score with respect to all X-ray entries followed by that with respect to entries of similar resolution.

The Analysed column shows the number of residues for which the sidechain conformation was analysed, and the total number of residues.

Mol	Chain	Analysed	Rotameric	Outliers	Percentiles
1	A	686/658 (104%)	675 (98%)	11 (2%)	70 52

All (11) residues with a non-rotameric sidechain are listed below:

Mol	Chain	Res	Type
1	A	243[A]	ASN
1	A	243[B]	ASN
1	A	310	ASP
1	A	355	ARG
1	A	388	ASP
1	A	395	PHE
1	A	642	LEU
1	A	703	ASN
1	A	739	ASP
1	A	740	GLU
1	A	769	THR

Some sidechains can be flipped to improve hydrogen bonding and reduce clashes. All (2) such sidechains are listed below:

Mol	Chain	Res	Type
1	A	173	HIS
1	A	608	ASN

5.3.3 RNA ⓘ

There are no RNA molecules in this entry.

5.4 Non-standard residues in protein, DNA, RNA chains ⓘ

1 non-standard protein/DNA/RNA residue is modelled in this entry.

In the following table, the Counts columns list the number of bonds (or angles) for which Mogul statistics could be retrieved, the number of bonds (or angles) that are observed in the model and the number of bonds (or angles) that are defined in the chemical component dictionary. The Link column lists molecule types, if any, to which the group is linked. The Z score for a bond length (or angle) is the number of standard deviations the observed value is removed from the expected value. A bond length (or angle) with $|Z| > 2$ is considered an outlier worth inspection. RMSZ is the root-mean-square of all Z scores of the bond lengths (or angles).

Mol	Type	Chain	Res	Link	Bond lengths			Bond angles		
					Counts	RMSZ	# Z > 2	Counts	RMSZ	# Z > 2
1	TPQ	A	478	1,4	13,14,15	1.69	3 (23%)	15,19,21	1.87	4 (26%)

In the following table, the Chirals column lists the number of chiral outliers, the number of chiral centers analysed, the number of these observed in the model and the number defined in the chemical component dictionary. Similar counts are reported in the Torsion and Rings columns. '-' means no outliers of that kind were identified.

Mol	Type	Chain	Res	Link	Chirals	Torsions	Rings
1	TPQ	A	478	1,4	-	0/4/22/24	0/1/1/1

All (3) bond length outliers are listed below:

Mol	Chain	Res	Type	Atoms	Z	Observed(Å)	Ideal(Å)
1	A	478	TPQ	O4-C4	-3.33	1.25	1.34
1	A	478	TPQ	C6-C1	2.25	1.40	1.34
1	A	478	TPQ	C3-C4	3.16	1.40	1.35

All (4) bond angle outliers are listed below:

Mol	Chain	Res	Type	Atoms	Z	Observed(°)	Ideal(°)
1	A	478	TPQ	CA-CB-C1	-4.70	104.21	113.63
1	A	478	TPQ	O-C-CA	-2.04	120.16	125.49
1	A	478	TPQ	C3-C2-C1	2.76	120.36	118.30
1	A	478	TPQ	CB-C1-C2	2.79	122.69	118.33

There are no chirality outliers.

There are no torsion outliers.

There are no ring outliers.

No monomer is involved in short contacts.

5.5 Carbohydrates ⓘ

3 carbohydrates are modelled in this entry.

In the following table, the Counts columns list the number of bonds (or angles) for which Mogul statistics could be retrieved, the number of bonds (or angles) that are observed in the model and the number of bonds (or angles) that are defined in the chemical component dictionary. The Link column lists molecule types, if any, to which the group is linked. The Z score for a bond length (or angle) is the number of standard deviations the observed value is removed from the expected value. A bond length (or angle) with $|Z| > 2$ is considered an outlier worth inspection. RMSZ is the root-mean-square of all Z scores of the bond lengths (or angles).

Mol	Type	Chain	Res	Link	Bond lengths			Bond angles		
					Counts	RMSZ	$\# Z > 2$	Counts	RMSZ	$\# Z > 2$
3	NAG	A	1104	1,3	14,14,15	0.67	0	15,19,21	0.74	0

Mol	Type	Chain	Res	Link	Bond lengths			Bond angles		
					Counts	RMSZ	# Z > 2	Counts	RMSZ	# Z > 2
3	NAG	A	1105	3	14,14,15	0.49	0	15,19,21	0.87	0
3	BMA	A	1106	3	11,11,12	0.54	0	14,15,17	0.68	0

In the following table, the Chirals column lists the number of chiral outliers, the number of chiral centers analysed, the number of these observed in the model and the number defined in the chemical component dictionary. Similar counts are reported in the Torsion and Rings columns. '-' means no outliers of that kind were identified.

Mol	Type	Chain	Res	Link	Chirals	Torsions	Rings
3	NAG	A	1104	1,3	-	0/6/23/26	0/1/1/1
3	NAG	A	1105	3	-	0/6/23/26	0/1/1/1
3	BMA	A	1106	3	-	0/2/19/22	0/1/1/1

There are no bond length outliers.

There are no bond angle outliers.

There are no chirality outliers.

There are no torsion outliers.

There are no ring outliers.

No monomer is involved in short contacts.

5.6 Ligand geometry

Of 26 ligands modelled in this entry, 20 are monoatomic - leaving 6 for Mogul analysis.

In the following table, the Counts columns list the number of bonds (or angles) for which Mogul statistics could be retrieved, the number of bonds (or angles) that are observed in the model and the number of bonds (or angles) that are defined in the chemical component dictionary. The Link column lists molecule types, if any, to which the group is linked. The Z score for a bond length (or angle) is the number of standard deviations the observed value is removed from the expected value. A bond length (or angle) with $|Z| > 2$ is considered an outlier worth inspection. RMSZ is the root-mean-square of all Z scores of the bond lengths (or angles).

Mol	Type	Chain	Res	Link	Bond lengths			Bond angles		
					Counts	RMSZ	# Z > 2	Counts	RMSZ	# Z > 2
2	NAG	A	1081[A]	1	14,14,15	0.46	0	15,19,21	0.90	1 (6%)
2	NAG	A	1081[B]	1	14,14,15	0.53	0	15,19,21	0.82	1 (6%)
2	NAG	A	1191	1	14,14,15	0.36	0	15,19,21	1.06	1 (6%)
2	NAG	A	1309	1	14,14,15	0.63	0	15,19,21	0.78	0
2	NAG	A	1434	1	14,14,15	0.58	0	15,19,21	0.65	0
8	IMD	A	821	-	3,5,5	0.61	0	4,5,5	0.71	0

In the following table, the Chirals column lists the number of chiral outliers, the number of chiral centers analysed, the number of these observed in the model and the number defined in the chemical component dictionary. Similar counts are reported in the Torsion and Rings columns. '-' means no outliers of that kind were identified.

Mol	Type	Chain	Res	Link	Chirals	Torsions	Rings
2	NAG	A	1081[A]	1	-	0/6/23/26	0/1/1/1
2	NAG	A	1081[B]	1	-	0/6/23/26	0/1/1/1
2	NAG	A	1191	1	-	0/6/23/26	0/1/1/1
2	NAG	A	1309	1	-	0/6/23/26	0/1/1/1
2	NAG	A	1434	1	-	0/6/23/26	0/1/1/1
8	IMD	A	821	-	-	0/0/0/0	0/1/1/1

There are no bond length outliers.

All (3) bond angle outliers are listed below:

Mol	Chain	Res	Type	Atoms	Z	Observed(°)	Ideal(°)
2	A	1191	NAG	C1-O5-C5	2.02	114.81	112.25
2	A	1081[B]	NAG	C1-O5-C5	2.06	114.86	112.25
2	A	1081[A]	NAG	C1-O5-C5	2.12	114.93	112.25

There are no chirality outliers.

There are no torsion outliers.

There are no ring outliers.

No monomer is involved in short contacts.

5.7 Other polymers [i](#)

There are no such residues in this entry.

5.8 Polymer linkage issues [i](#)

There are no chain breaks in this entry.

6 Fit of model and data ⓘ

6.1 Protein, DNA and RNA chains ⓘ

In the following table, the column labelled ‘#RSRZ> 2’ contains the number (and percentage) of RSRZ outliers, followed by percent RSRZ outliers for the chain as percentile scores relative to all X-ray entries and entries of similar resolution. The OWAB column contains the minimum, median, 95th percentile and maximum values of the occupancy-weighted average B-factor per residue. The column labelled ‘Q< 0.9’ lists the number of (and percentage) of residues with an average occupancy less than 0.9.

Mol	Chain	Analysed	<RSRZ>	#RSRZ>2	OWAB(Å ²)	Q<0.9
1	A	734/747 (98%)	-0.07	24 (3%) 50 52	21, 30, 52, 105	7 (0%)

All (24) RSRZ outliers are listed below:

Mol	Chain	Res	Type	RSRZ
1	A	739	ASP	6.4
1	A	740	GLU	6.3
1	A	776[A]	ILE	6.1
1	A	47	SER	4.5
1	A	737	TYR	4.5
1	A	310	ASP	4.2
1	A	741	THR	4.1
1	A	43	ALA	4.0
1	A	742	GLU	3.7
1	A	149	ASP	3.6
1	A	777[A]	ASN	3.4
1	A	46	VAL	3.3
1	A	44	GLU	3.2
1	A	738	ASP	3.0
1	A	311	SER	2.9
1	A	770[A]	TYR	2.8
1	A	743	GLU	2.7
1	A	45	CYS	2.6
1	A	288	ASP	2.6
1	A	114	GLU	2.6
1	A	289	ASP	2.3
1	A	150	GLU	2.1
1	A	457[A]	SER	2.1
1	A	282	TYR	2.0

6.2 Non-standard residues in protein, DNA, RNA chains [i](#)

In the following table, the Atoms column lists the number of modelled atoms in the group and the number defined in the chemical component dictionary. LLDF column lists the quality of electron density of the group with respect to its neighbouring residues in protein, DNA or RNA chains. The B-factors column lists the minimum, median, 95th percentile and maximum values of B factors of atoms in the group. The column labelled 'Q< 0.9' lists the number of atoms with occupancy less than 0.9.

Mol	Type	Chain	Res	Atoms	RSCC	RSR	LLDF	B-factors(Å ²)	Q<0.9
1	TPQ	A	478	14/15	0.93	0.16	-	25,40,73,108	9

6.3 Carbohydrates [i](#)

In the following table, the Atoms column lists the number of modelled atoms in the group and the number defined in the chemical component dictionary. LLDF column lists the quality of electron density of the group with respect to its neighbouring residues in protein, DNA or RNA chains. The B-factors column lists the minimum, median, 95th percentile and maximum values of B factors of atoms in the group. The column labelled 'Q< 0.9' lists the number of atoms with occupancy less than 0.9.

Mol	Type	Chain	Res	Atoms	RSCC	RSR	LLDF	B-factors(Å ²)	Q<0.9
3	NAG	A	1104	14/15	0.93	0.09	0.21	31,48,62,63	0
3	BMA	A	1106	11/12	0.86	0.28	-	70,85,97,105	0
3	NAG	A	1105	14/15	0.83	0.16	-	39,52,78,88	0

6.4 Ligands [i](#)

In the following table, the Atoms column lists the number of modelled atoms in the group and the number defined in the chemical component dictionary. LLDF column lists the quality of electron density of the group with respect to its neighbouring residues in protein, DNA or RNA chains. The B-factors column lists the minimum, median, 95th percentile and maximum values of B factors of atoms in the group. The column labelled 'Q< 0.9' lists the number of atoms with occupancy less than 0.9.

Mol	Type	Chain	Res	Atoms	RSCC	RSR	LLDF	B-factors(Å ²)	Q<0.9
2	NAG	A	1081[B]	14/15	0.67	0.27	3.74	30,35,50,57	14
2	NAG	A	1081[A]	14/15	0.67	0.27	3.13	35,56,70,80	14
9	XE	A	907	1/1	0.95	0.10	1.26	39,39,39,39	1
9	XE	A	908	1/1	0.96	0.09	1.02	39,39,39,39	1
7	CL	A	813	1/1	0.98	0.11	0.34	43,43,43,43	0
9	XE	A	905	1/1	0.98	0.06	-0.94	38,38,38,38	1
5	CA	A	802	1/1	1.00	0.06	-1.02	23,23,23,23	0
9	XE	A	902	1/1	0.97	0.06	-1.09	41,41,41,41	1

Continued on next page...

Continued from previous page...

Mol	Type	Chain	Res	Atoms	RSCC	RSR	LLDF	B-factors(\AA^2)	Q<0.9
9	XE	A	906	1/1	0.94	0.06	-1.51	43,43,43,43	1
7	CL	A	811	1/1	0.98	0.05	-1.53	40,40,40,40	0
9	XE	A	904	1/1	0.99	0.05	-1.97	38,38,38,38	1
9	XE	A	901	1/1	0.99	0.05	-2.89	27,27,27,27	1
9	XE	A	903	1/1	0.99	0.04	-3.20	34,34,34,34	1
5	CA	A	803	1/1	0.99	0.04	-3.75	25,25,25,25	0
2	NAG	A	1434	14/15	0.88	0.22	-	44,60,78,89	0
2	NAG	A	1191	14/15	0.90	0.27	-	39,53,71,75	0
6	MG	A	806	1/1	0.78	0.08	-	59,59,59,59	1
6	MG	A	804	1/1	0.98	0.04	-	31,31,31,31	0
8	IMD	A	821	5/5	0.83	0.16	-	38,44,48,60	5
7	CL	A	814	1/1	0.95	0.08	-	48,48,48,48	1
7	CL	A	815	1/1	0.98	0.12	-	46,46,46,46	1
7	CL	A	812	1/1	1.00	0.08	-	41,41,41,41	0
7	CL	A	816	1/1	0.99	0.22	-	49,49,49,49	1
6	MG	A	805	1/1	0.95	0.06	-	37,37,37,37	1
2	NAG	A	1309	14/15	0.65	0.36	-	66,86,102,103	0
4	CU	A	801	1/1	0.99	0.03	-	32,32,32,32	0

6.5 Other polymers [i](#)

There are no such residues in this entry.