



Full wwPDB X-ray Structure Validation Report ⓘ

Feb 1, 2016 – 12:38 PM GMT

PDB ID : 3RM8
Title : AMCase in complex with Compound 2
Authors : Olland, A.
Deposited on : 2011-04-20
Resolution : 1.80 Å(reported)

This is a Full wwPDB X-ray Structure Validation Report for a publicly released PDB entry.
We welcome your comments at validation@mail.wwpdb.org
A user guide is available at
<http://wwpdb.org/validation/2016/XrayValidationReportHelp>
with specific help available everywhere you see the ⓘ symbol.

The following versions of software and data (see [references ⓘ](#)) were used in the production of this report:

MolProbity : 4.02b-467
Mogul : 1.7 (RC4), CSD as536be (2015)
Xtriage (Phenix) : 1.9-1692
EDS : rb-20026688
Percentile statistics : 20151230.v01 (using entries in the PDB archive December 30th 2015)
Refmac : 5.8.0135
CCP4 : 6.5.0
Ideal geometry (proteins) : Engh & Huber (2001)
Ideal geometry (DNA, RNA) : Parkinson et al. (1996)
Validation Pipeline (wwPDB-VP) : trunk26865

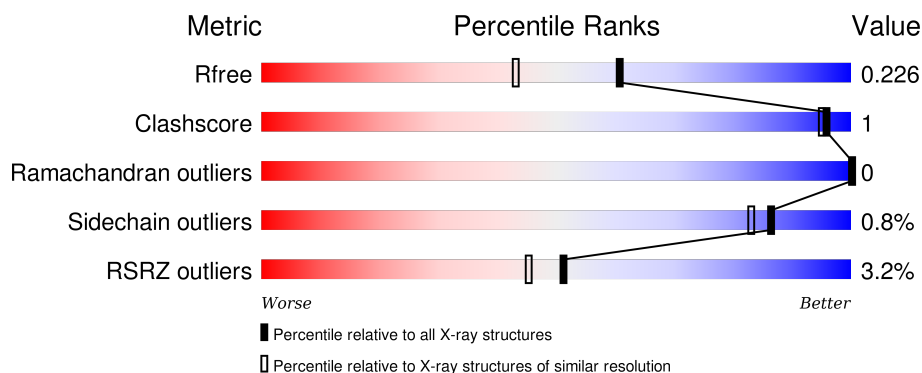
1 Overall quality at a glance

The following experimental techniques were used to determine the structure:

X-RAY DIFFRACTION


The reported resolution of this entry is 1.80 Å.

Percentile scores (ranging between 0-100) for global validation metrics of the entry are shown in the following graphic. The table shows the number of entries on which the scores are based.



Metric	Whole archive (#Entries)	Similar resolution (#Entries, resolution range(Å))
R_{free}	91344	4533 (1.80-1.80)
Clashscore	102246	5383 (1.80-1.80)
Ramachandran outliers	100387	5320 (1.80-1.80)
Sidechain outliers	100360	5319 (1.80-1.80)
RSRZ outliers	91569	4547 (1.80-1.80)

The table below summarises the geometric issues observed across the polymeric chains and their fit to the electron density. The red, orange, yellow and green segments on the lower bar indicate the fraction of residues that contain outliers for ≥ 3 , 2, 1 and 0 types of geometric quality criteria. A grey segment represents the fraction of residues that are not modelled. The numeric value for each fraction is indicated below the corresponding segment, with a dot representing fractions $\leq 5\%$. The upper red bar (where present) indicates the fraction of residues that have poor fit to the electron density. The numeric value is given above the bar.

Mol	Chain	Length	Quality of chain
1	A	395	 3% 92% • • 5%
1	B	395	 3% 90% • • 6%

2 Entry composition

There are 3 unique types of molecules in this entry. The entry contains 6436 atoms, of which 0 are hydrogens and 0 are deuteriums.

In the tables below, the ZeroOcc column contains the number of atoms modelled with zero occupancy, the AltConf column contains the number of residues with at least one atom in alternate conformation and the Trace column contains the number of residues modelled with at most 2 atoms.

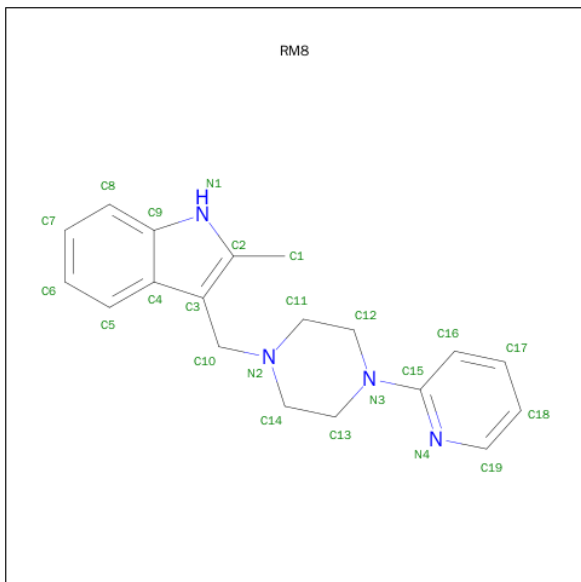
- Molecule 1 is a protein called Acidic mammalian chitinase.

Mol	Chain	Residues	Atoms					ZeroOcc	AltConf	Trace
1	A	377	Total	C	N	O	S	0	1	0
			2987	1927	485	560	15			
1	B	373	Total	C	N	O	S	0	1	0
			2963	1912	481	555	15			

There are 24 discrepancies between the modelled and reference sequences:

Chain	Residue	Modelled	Actual	Comment	Reference
A	45	ASP	ASN	variant	UNP Q9BZP6
A	47	ASN	ASP	variant	UNP Q9BZP6
A	61	MET	ARG	variant	UNP Q9BZP6
A	339	VAL	ILE	variant	UNP Q9BZP6
A	409	GLY	-	EXPRESSION TAG	UNP Q9BZP6
A	410	SER	-	EXPRESSION TAG	UNP Q9BZP6
A	411	HIS	-	EXPRESSION TAG	UNP Q9BZP6
A	412	HIS	-	EXPRESSION TAG	UNP Q9BZP6
A	413	HIS	-	EXPRESSION TAG	UNP Q9BZP6
A	414	HIS	-	EXPRESSION TAG	UNP Q9BZP6
A	415	HIS	-	EXPRESSION TAG	UNP Q9BZP6
A	416	HIS	-	EXPRESSION TAG	UNP Q9BZP6
B	45	ASP	ASN	variant	UNP Q9BZP6
B	47	ASN	ASP	variant	UNP Q9BZP6
B	61	MET	ARG	variant	UNP Q9BZP6
B	339	VAL	ILE	variant	UNP Q9BZP6
B	409	GLY	-	EXPRESSION TAG	UNP Q9BZP6
B	410	SER	-	EXPRESSION TAG	UNP Q9BZP6
B	411	HIS	-	EXPRESSION TAG	UNP Q9BZP6
B	412	HIS	-	EXPRESSION TAG	UNP Q9BZP6
B	413	HIS	-	EXPRESSION TAG	UNP Q9BZP6
B	414	HIS	-	EXPRESSION TAG	UNP Q9BZP6
B	415	HIS	-	EXPRESSION TAG	UNP Q9BZP6
B	416	HIS	-	EXPRESSION TAG	UNP Q9BZP6

- Molecule 2 is 2-METHYL-3-{[4-(PYRIDIN-2-YL)PIPERAZIN-1-YL]METHYL}-1H-INDOLE (three-letter code: RM8) (formula: C₁₉H₂₂N₄).

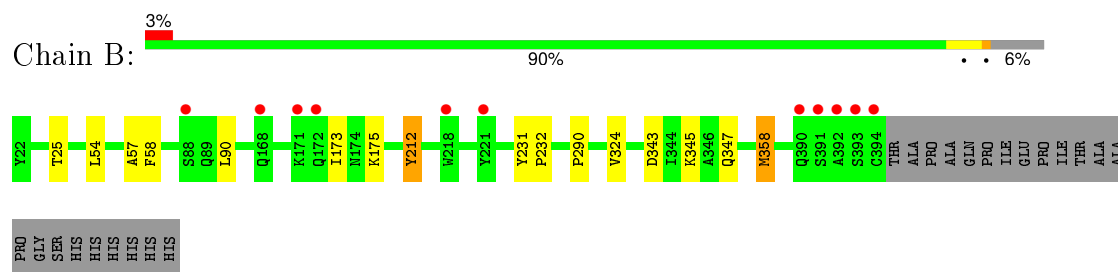
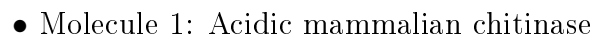


Mol	Chain	Residues	Atoms			ZeroOcc	AltConf
2	A	1	Total	C	N	0	0
			23	19	4		
2	B	1	Total	C	N	0	0
			23	19	4		

- Molecule 3 is water.

Mol	Chain	Residues	Atoms		ZeroOcc	AltConf
3	A	205	Total	O	0	0
			205	205		
3	B	235	Total	O	0	0
			235	235		

- Molecule 1: Acidic mammalian chitinase



4 Data and refinement statistics

Property	Value	Source
Space group	P 21 21 21	Depositor
Cell constants a, b, c, α , β , γ	63.68Å 89.25Å 125.80Å 90.00° 90.00° 90.00°	Depositor
Resolution (Å)	30.00 – 1.80 29.17 – 1.80	Depositor EDS
% Data completeness (in resolution range)	93.5 (30.00-1.80) 93.5 (29.17-1.80)	Depositor EDS
R_{merge}	(Not available)	Depositor
R_{sym}	(Not available)	Depositor
$\langle I/\sigma(I) \rangle$ ¹	2.34 (at 1.80Å)	Xtriage
Refinement program	REFMAC 5.2.0019	Depositor
R, R_{free}	0.199 , 0.224 0.200 , 0.226	Depositor DCC
R_{free} test set	3153 reflections (5.29%)	DCC
Wilson B-factor (Å ²)	18.4	Xtriage
Anisotropy	0.044	Xtriage
Bulk solvent k_{sol} (e/Å ³), B_{sol} (Å ²)	0.37 , 36.0	EDS
Estimated twinning fraction	No twinning to report.	Xtriage
L-test for twinning ²	$\langle L \rangle = 0.51$, $\langle L^2 \rangle = 0.35$	Xtriage
Outliers	1 of 62704 reflections (0.002%)	Xtriage
F_o, F_c correlation	0.95	EDS
Total number of atoms	6436	wwPDB-VP
Average B, all atoms (Å ²)	17.0	wwPDB-VP

Xtriage's analysis on translational NCS is as follows: *The largest off-origin peak in the Patterson function is 9.64% of the height of the origin peak. No significant pseudotranslation is detected.*

¹Intensities estimated from amplitudes.

²Theoretical values of $\langle |L| \rangle$, $\langle L^2 \rangle$ for acentric reflections are 0.5, 0.375 respectively for untwinned datasets, and 0.333, 0.2 for perfectly twinned datasets.

5 Model quality

5.1 Standard geometry

Bond lengths and bond angles in the following residue types are not validated in this section: RM8

The Z score for a bond length (or angle) is the number of standard deviations the observed value is removed from the expected value. A bond length (or angle) with $|Z| > 5$ is considered an outlier worth inspection. RMSZ is the root-mean-square of all Z scores of the bond lengths (or angles).

Mol	Chain	Bond lengths		Bond angles	
		RMSZ	# Z >5	RMSZ	# Z >5
1	A	0.38	0/3083	0.50	0/4203
1	B	0.38	0/3058	0.50	0/4167
All	All	0.38	0/6141	0.50	0/8370

There are no bond length outliers.

There are no bond angle outliers.

There are no chirality outliers.

There are no planarity outliers.

5.2 Too-close contacts

In the following table, the Non-H and H(model) columns list the number of non-hydrogen atoms and hydrogen atoms in the chain respectively. The H(added) column lists the number of hydrogen atoms added and optimized by MolProbity. The Clashes column lists the number of clashes within the asymmetric unit, whereas Symm-Clashes lists symmetry related clashes.

Mol	Chain	Non-H	H(model)	H(added)	Clashes	Symm-Clashes
1	A	2987	0	2835	9	0
1	B	2963	0	2811	9	0
2	A	23	0	22	1	0
2	B	23	0	22	1	0
3	A	205	0	0	1	0
3	B	235	0	0	1	0
All	All	6436	0	5690	17	0

The all-atom clashscore is defined as the number of clashes found per 1000 atoms (including hydrogen atoms). The all-atom clashscore for this structure is 1.

All (17) close contacts within the same asymmetric unit are listed below, sorted by their clash

magnitude.

Atom-1	Atom-2	Interatomic distance (Å)	Clash overlap (Å)
1:A:385:LYS:HA	1:A:390:GLN:HG2	1.82	0.62
1:B:173:ILE:HD12	1:B:175:LYS:HD2	1.94	0.49
1:B:54:LEU:HG	1:B:90:LEU:HD11	1.95	0.49
1:A:270:ASN:OD1	1:A:299:GLY:HA2	2.13	0.48
1:A:376:LYS:HD3	3:A:626:HOH:O	2.12	0.48
1:B:25:THR:O	1:B:358:MET:HA	2.15	0.47
1:A:57:ALA:HA	1:A:58:PHE:HA	1.73	0.47
1:B:231:TYR:CG	1:B:232:PRO:HD2	2.49	0.46
1:A:25:THR:O	1:A:358:MET:HA	2.16	0.46
1:B:343:ASP:O	1:B:347:GLN:HG2	2.15	0.46
1:B:345:LYS:HG3	3:B:633:HOH:O	2.16	0.45
1:B:57:ALA:HA	1:B:58:PHE:HA	1.74	0.44
1:A:216:GLY:HA3	1:A:218:TRP:CZ3	2.54	0.42
1:A:71:TRP:CD2	1:B:290:PRO:HA	2.55	0.41
1:B:212:TYR:CE1	2:B:417:RM8:H12A	2.55	0.41
1:A:140:GLU:HA	1:A:141:TYR:CD2	2.55	0.41
1:A:212:TYR:CE1	2:A:417:RM8:H12A	2.56	0.40

There are no symmetry-related clashes.

5.3 Torsion angles ⓘ

5.3.1 Protein backbone ⓘ

In the following table, the Percentiles column shows the percent Ramachandran outliers of the chain as a percentile score with respect to all X-ray entries followed by that with respect to entries of similar resolution.

The Analysed column shows the number of residues for which the backbone conformation was analysed, and the total number of residues.

Mol	Chain	Analysed	Favoured	Allowed	Outliers	Percentiles	
1	A	376/395 (95%)	370 (98%)	6 (2%)	0	100	100
1	B	372/395 (94%)	367 (99%)	5 (1%)	0	100	100
All	All	748/790 (95%)	737 (98%)	11 (2%)	0	100	100

There are no Ramachandran outliers to report.

5.3.2 Protein sidechains [i](#)

In the following table, the Percentiles column shows the percent sidechain outliers of the chain as a percentile score with respect to all X-ray entries followed by that with respect to entries of similar resolution.

The Analysed column shows the number of residues for which the sidechain conformation was analysed, and the total number of residues.

Mol	Chain	Analysed	Rotameric	Outliers	Percentiles	
1	A	313/327 (96%)	311 (99%)	2 (1%)	90	88
1	B	311/327 (95%)	308 (99%)	3 (1%)	82	77
All	All	624/654 (95%)	619 (99%)	5 (1%)	86	83

All (5) residues with a non-rotameric sidechain are listed below:

Mol	Chain	Res	Type
1	A	212	TYR
1	A	358	MET
1	B	212	TYR
1	B	324	VAL
1	B	358	MET

Some sidechains can be flipped to improve hydrogen bonding and reduce clashes. There are no such sidechains identified.

5.3.3 RNA [i](#)

There are no RNA molecules in this entry.

5.4 Non-standard residues in protein, DNA, RNA chains [i](#)

There are no non-standard protein/DNA/RNA residues in this entry.

5.5 Carbohydrates [i](#)

There are no carbohydrates in this entry.

5.6 Ligand geometry [i](#)

2 ligands are modelled in this entry.

In the following table, the Counts columns list the number of bonds (or angles) for which Mogul statistics could be retrieved, the number of bonds (or angles) that are observed in the model and the number of bonds (or angles) that are defined in the chemical component dictionary. The Link column lists molecule types, if any, to which the group is linked. The Z score for a bond length (or angle) is the number of standard deviations the observed value is removed from the expected value. A bond length (or angle) with $|Z| > 2$ is considered an outlier worth inspection. RMSZ is the root-mean-square of all Z scores of the bond lengths (or angles).

Mol	Type	Chain	Res	Link	Bond lengths			Bond angles		
					Counts	RMSZ	# $ Z > 2$	Counts	RMSZ	# $ Z > 2$
2	RM8	A	417	-	24,26,26	1.27	3 (12%)	29,36,36	1.18	4 (13%)
2	RM8	B	417	-	24,26,26	1.25	2 (8%)	29,36,36	1.20	4 (13%)

In the following table, the Chirals column lists the number of chiral outliers, the number of chiral centers analysed, the number of these observed in the model and the number defined in the chemical component dictionary. Similar counts are reported in the Torsion and Rings columns. '-' means no outliers of that kind were identified.

Mol	Type	Chain	Res	Link	Chirals	Torsions	Rings
2	RM8	A	417	-	-	0/6/18/18	0/4/4/4
2	RM8	B	417	-	-	0/6/18/18	0/4/4/4

All (5) bond length outliers are listed below:

Mol	Chain	Res	Type	Atoms	Z	Observed(Å)	Ideal(Å)
2	A	417	RM8	C10-C3	-2.16	1.49	1.51
2	B	417	RM8	C15-N3	2.00	1.41	1.37
2	A	417	RM8	C11-N2	2.02	1.52	1.46
2	B	417	RM8	C10-N2	2.67	1.52	1.47
2	A	417	RM8	C10-N2	2.67	1.52	1.47

All (8) bond angle outliers are listed below:

Mol	Chain	Res	Type	Atoms	Z	Observed(°)	Ideal(°)
2	B	417	RM8	C16-C15-N4	-2.39	118.76	123.17
2	A	417	RM8	C16-C15-N4	-2.37	118.81	123.17
2	B	417	RM8	C19-N4-C15	2.18	119.75	116.92
2	A	417	RM8	C19-N4-C15	2.27	119.87	116.92
2	A	417	RM8	N4-C15-N3	2.28	120.25	116.96
2	B	417	RM8	C13-N3-C12	2.44	116.71	111.59
2	A	417	RM8	C13-N3-C12	2.47	116.77	111.59
2	B	417	RM8	N4-C15-N3	2.58	120.68	116.96

There are no chirality outliers.

There are no torsion outliers.

There are no ring outliers.

2 monomers are involved in 2 short contacts:

Mol	Chain	Res	Type	Clashes	Symm-Clashes
2	A	417	RM8	1	0
2	B	417	RM8	1	0

5.7 Other polymers [i](#)

There are no such residues in this entry.

5.8 Polymer linkage issues [i](#)

There are no chain breaks in this entry.

6 Fit of model and data ⓘ

6.1 Protein, DNA and RNA chains ⓘ

In the following table, the column labelled ‘#RSRZ> 2’ contains the number (and percentage) of RSRZ outliers, followed by percent RSRZ outliers for the chain as percentile scores relative to all X-ray entries and entries of similar resolution. The OWAB column contains the minimum, median, 95th percentile and maximum values of the occupancy-weighted average B-factor per residue. The column labelled ‘Q< 0.9’ lists the number of (and percentage) of residues with an average occupancy less than 0.9.

Mol	Chain	Analysed	<RSRZ>	#RSRZ>2	OWAB(Å ²)	Q<0.9
1	A	377/395 (95%)	-0.05	13 (3%) 49 43	11, 16, 25, 38	0
1	B	373/395 (94%)	-0.04	11 (2%) 55 49	11, 16, 27, 39	0
All	All	750/790 (94%)	-0.05	24 (3%) 51 45	11, 16, 26, 39	0

All (24) RSRZ outliers are listed below:

Mol	Chain	Res	Type	RSRZ
1	B	391	SER	7.9
1	A	398	ALA	7.4
1	B	393	SER	6.1
1	B	390	GLN	5.7
1	B	392	ALA	5.2
1	A	221	TYR	3.3
1	A	393	SER	3.3
1	A	391	SER	3.2
1	A	396	ALA	3.2
1	B	221	TYR	3.1
1	A	277	SER	3.0
1	B	172	GLN	3.0
1	A	390	GLN	2.9
1	A	392	ALA	2.9
1	B	394	CYS	2.9
1	B	168	GLN	2.6
1	B	171	LYS	2.4
1	A	397	PRO	2.4
1	A	172	GLN	2.4
1	A	218	TRP	2.4
1	A	395	THR	2.3
1	A	394	CYS	2.3
1	B	88	SER	2.2
1	B	218	TRP	2.1

6.2 Non-standard residues in protein, DNA, RNA chains [i](#)

There are no non-standard protein/DNA/RNA residues in this entry.

6.3 Carbohydrates [i](#)

There are no carbohydrates in this entry.

6.4 Ligands [i](#)

In the following table, the Atoms column lists the number of modelled atoms in the group and the number defined in the chemical component dictionary. LLDF column lists the quality of electron density of the group with respect to its neighbouring residues in protein, DNA or RNA chains. The B-factors column lists the minimum, median, 95th percentile and maximum values of B factors of atoms in the group. The column labelled 'Q< 0.9' lists the number of atoms with occupancy less than 0.9.

Mol	Type	Chain	Res	Atoms	RSCC	RSR	LLDF	B-factors(\AA^2)	Q<0.9
2	RM8	A	417	23/23	0.95	0.12	1.00	13,15,16,16	0
2	RM8	B	417	23/23	0.94	0.12	0.85	13,15,18,20	0

6.5 Other polymers [i](#)

There are no such residues in this entry.