



Full wwPDB X-ray Structure Validation Report ⓘ

Jan 31, 2016 – 10:00 PM GMT

PDB ID : 1RO8
Title : Structural analysis of the sialyltransferase CstII from *Campylobacter jejuni* in complex with a substrate analogue, cytidine-5'-monophosphate
Authors : Chiu, C.P.; Watts, A.G.; Lairson, L.L.; Gilbert, M.; Lim, D.; Wakarchuk, W.W.; Withers, S.G.; Strynadka, N.C.
Deposited on : 2003-12-01
Resolution : 2.05 Å(reported)

This is a Full wwPDB X-ray Structure Validation Report for a publicly released PDB entry.
We welcome your comments at validation@mail.wwpdb.org
A user guide is available at
<http://wwpdb.org/validation/2016/XrayValidationReportHelp>
with specific help available everywhere you see the ⓘ symbol.

The following versions of software and data (see [references ⓘ](#)) were used in the production of this report:

MolProbity : 4.02b-467
Mogul : 1.7 (RC4), CSD as536be (2015)
Xtriage (Phenix) : 1.9-1692
EDS : rb-20026688
Percentile statistics : 20151230.v01 (using entries in the PDB archive December 30th 2015)
Refmac : 5.8.0135
CCP4 : 6.5.0
Ideal geometry (proteins) : Engh & Huber (2001)
Ideal geometry (DNA, RNA) : Parkinson et al. (1996)
Validation Pipeline (wwPDB-VP) : trunk26865

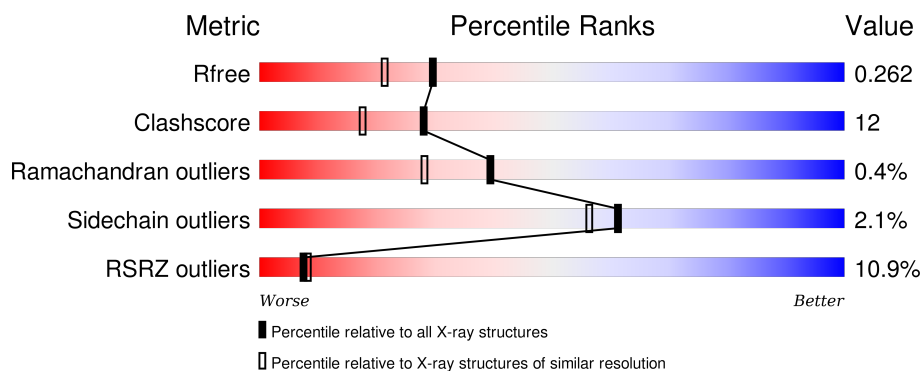
1 Overall quality at a glance

The following experimental techniques were used to determine the structure:

X-RAY DIFFRACTION

The reported resolution of this entry is 2.05 Å.

Percentile scores (ranging between 0-100) for global validation metrics of the entry are shown in the following graphic. The table shows the number of entries on which the scores are based.



Metric	Whole archive (#Entries)	Similar resolution (#Entries, resolution range(Å))
R_{free}	91344	1192 (2.04-2.04)
Clashscore	102246	1269 (2.04-2.04)
Ramachandran outliers	100387	1258 (2.04-2.04)
Sidechain outliers	100360	1258 (2.04-2.04)
RSRZ outliers	91569	1194 (2.04-2.04)

The table below summarises the geometric issues observed across the polymeric chains and their fit to the electron density. The red, orange, yellow and green segments on the lower bar indicate the fraction of residues that contain outliers for ≥ 3 , 2, 1 and 0 types of geometric quality criteria. A grey segment represents the fraction of residues that are not modelled. The numeric value for each fraction is indicated below the corresponding segment, with a dot representing fractions $\leq 5\%$. The upper red bar (where present) indicates the fraction of residues that have poor fit to the electron density. The numeric value is given above the bar.

Mol	Chain	Length	Quality of chain
1	A	262	
1	B	262	

2 Entry composition

There are 3 unique types of molecules in this entry. The entry contains 4050 atoms, of which 0 are hydrogens and 0 are deuteriums.

In the tables below, the ZeroOcc column contains the number of atoms modelled with zero occupancy, the AltConf column contains the number of residues with at least one atom in alternate conformation and the Trace column contains the number of residues modelled with at most 2 atoms.

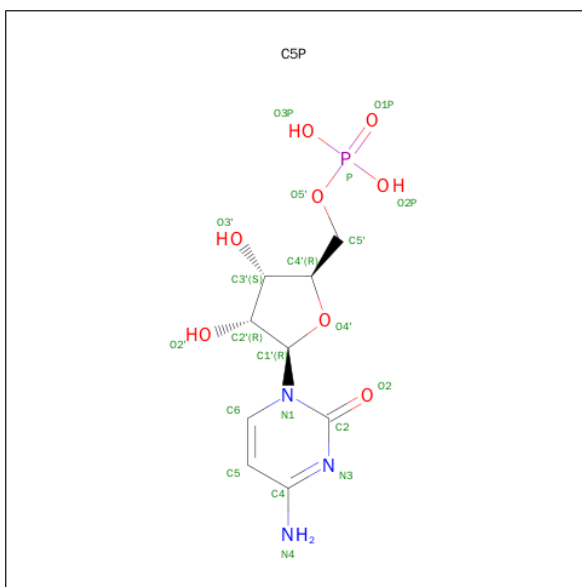
- Molecule 1 is a protein called alpha-2,3/8-sialyltransferase.

Mol	Chain	Residues	Atoms						ZeroOcc	AltConf	Trace
1	A	248	Total	C	N	O	S	Se	0	0	0
			2066	1353	326	378	6	3			
1	B	224	Total	C	N	O	S	Se	0	0	0
			1878	1236	291	342	6	3			

There are 16 discrepancies between the modelled and reference sequences:

Chain	Residue	Modelled	Actual	Comment	Reference
A	-3	GLY	-	CLONING ARTIFACT	UNP Q9LAK3
A	-2	SER	-	CLONING ARTIFACT	UNP Q9LAK3
A	-1	HIS	-	CLONING ARTIFACT	UNP Q9LAK3
A	1	MSE	MET	MODIFIED RESIDUE	UNP Q9LAK3
A	53	SER	ILE	ENGINEERED	UNP Q9LAK3
A	77	MSE	MET	MODIFIED RESIDUE	UNP Q9LAK3
A	136	MSE	MET	MODIFIED RESIDUE	UNP Q9LAK3
A	222	GLY	GLU	ENGINEERED	UNP Q9LAK3
B	-3	GLY	-	CLONING ARTIFACT	UNP Q9LAK3
B	-2	SER	-	CLONING ARTIFACT	UNP Q9LAK3
B	-1	HIS	-	CLONING ARTIFACT	UNP Q9LAK3
B	1	MSE	MET	MODIFIED RESIDUE	UNP Q9LAK3
B	53	SER	ILE	ENGINEERED	UNP Q9LAK3
B	77	MSE	MET	MODIFIED RESIDUE	UNP Q9LAK3
B	136	MSE	MET	MODIFIED RESIDUE	UNP Q9LAK3
B	222	GLY	GLU	ENGINEERED	UNP Q9LAK3

- Molecule 2 is CYTIDINE-5'-MONOPHOSPHATE (three-letter code: C5P) (formula: $C_9H_{14}N_3O_8P$).



Mol	Chain	Residues	Atoms					ZeroOcc	AltConf
2	B	1	Total	C	N	O	P	0	0
			21	9	3	8	1		
2	A	1	Total	C	N	O	P	0	0
			21	9	3	8	1		

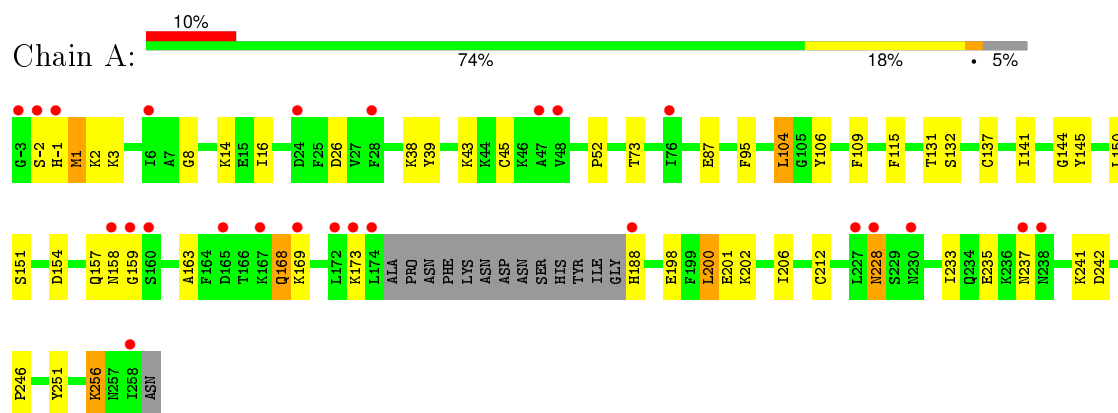
- Molecule 3 is water.

Mol	Chain	Residues	Atoms		ZeroOcc	AltConf
3	A	37	Total	O	0	0
			37	37		
3	B	27	Total	O	0	0
			27	27		

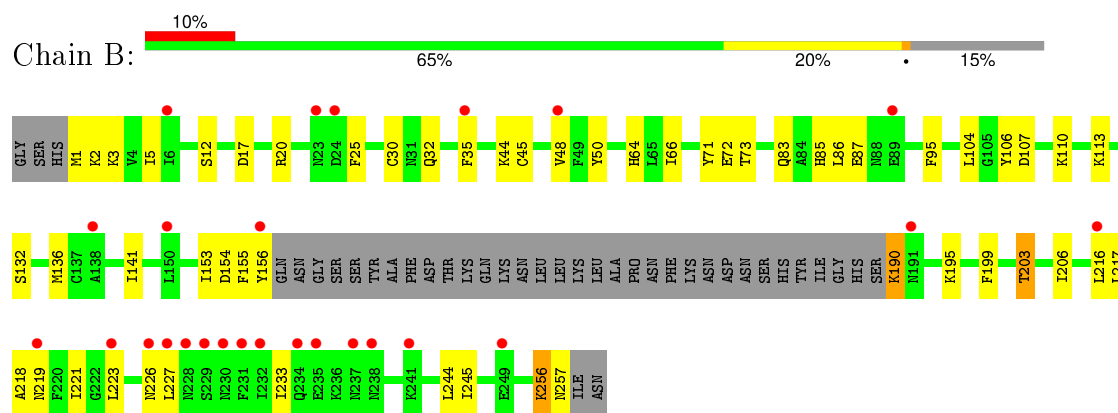
3 Residue-property plots [i](#)

These plots are drawn for all protein, RNA and DNA chains in the entry. The first graphic for a chain summarises the proportions of errors displayed in the second graphic. The second graphic shows the sequence view annotated by issues in geometry and electron density. Residues are color-coded according to the number of geometric quality criteria for which they contain at least one outlier: green = 0, yellow = 1, orange = 2 and red = 3 or more. A red dot above a residue indicates a poor fit to the electron density ($RSRZ > 2$). Stretches of 2 or more consecutive residues without any outlier are shown as a green connector. Residues present in the sample, but not in the model, are shown in grey.

- Molecule 1: alpha-2,3/8-sialyltransferase



- Molecule 1: alpha-2,3/8-sialyltransferase



4 Data and refinement statistics

Property	Value	Source
Space group	P 4	Depositor
Cell constants a, b, c, α , β , γ	115.43Å 115.43Å 41.06Å 90.00° 90.00° 90.00°	Depositor
Resolution (Å)	28.95 – 2.05 28.95 – 2.05	Depositor EDS
% Data completeness (in resolution range)	91.0 (28.95-2.05) 93.5 (28.95-2.05)	Depositor EDS
R_{merge}	(Not available)	Depositor
R_{sym}	0.06	Depositor
$\langle I/\sigma(I) \rangle$ ¹	7.32 (at 2.04Å)	Xtriage
Refinement program	CNS 1.1	Depositor
R, R_{free}	0.220 , 0.262 0.228 , 0.262	Depositor DCC
R_{free} test set	1550 reflections (4.81%)	DCC
Wilson B-factor (Å ²)	25.6	Xtriage
Anisotropy	1.145	Xtriage
Bulk solvent k_{sol} (e/Å ³), B_{sol} (Å ²)	0.38 , 49.4	EDS
Estimated twinning fraction	0.031 for h,-k,-l	Xtriage
L-test for twinning ²	$\langle L \rangle = 0.48$, $\langle L^2 \rangle = 0.31$	Xtriage
Outliers	0 of 60900 reflections	Xtriage
F_o, F_c correlation	0.94	EDS
Total number of atoms	4050	wwPDB-VP
Average B, all atoms (Å ²)	40.0	wwPDB-VP

Xtriage's analysis on translational NCS is as follows: *The largest off-origin peak in the Patterson function is 5.88% of the height of the origin peak. No significant pseudotranslation is detected.*

¹Intensities estimated from amplitudes.

²Theoretical values of $\langle |L| \rangle$, $\langle L^2 \rangle$ for acentric reflections are 0.5, 0.375 respectively for untwinned datasets, and 0.333, 0.2 for perfectly twinned datasets.

5 Model quality [i](#)

5.1 Standard geometry [i](#)

Bond lengths and bond angles in the following residue types are not validated in this section: C5P

The Z score for a bond length (or angle) is the number of standard deviations the observed value is removed from the expected value. A bond length (or angle) with $|Z| > 5$ is considered an outlier worth inspection. RMSZ is the root-mean-square of all Z scores of the bond lengths (or angles).

Mol	Chain	Bond lengths		Bond angles	
		RMSZ	$\# Z > 5$	RMSZ	$\# Z > 5$
1	A	0.37	0/2119	0.55	1/2850 (0.0%)
1	B	0.36	0/1928	0.54	0/2596
All	All	0.37	0/4047	0.55	1/5446 (0.0%)

There are no bond length outliers.

All (1) bond angle outliers are listed below:

Mol	Chain	Res	Type	Atoms	Z	Observed(°)	Ideal(°)
1	A	8	GLY	N-CA-C	-5.02	100.56	113.10

There are no chirality outliers.

There are no planarity outliers.

5.2 Too-close contacts [i](#)

In the following table, the Non-H and H(model) columns list the number of non-hydrogen atoms and hydrogen atoms in the chain respectively. The H(added) column lists the number of hydrogen atoms added and optimized by MolProbity. The Clashes column lists the number of clashes within the asymmetric unit, whereas Symm-Clashes lists symmetry related clashes.

Mol	Chain	Non-H	H(model)	H(added)	Clashes	Symm-Clashes
1	A	2066	0	2007	41	0
1	B	1878	0	1822	53	0
2	A	21	0	11	3	0
2	B	21	0	11	2	0
3	A	37	0	0	0	0
3	B	27	0	0	0	0
All	All	4050	0	3851	92	0

The all-atom clashscore is defined as the number of clashes found per 1000 atoms (including hydrogen atoms). The all-atom clashscore for this structure is 12.

All (92) close contacts within the same asymmetric unit are listed below, sorted by their clash magnitude.

Atom-1	Atom-2	Interatomic distance (Å)	Clash overlap (Å)
1:B:141:ILE:HD11	1:B:206:ILE:HD13	1.28	1.14
1:B:1:MSE:HG3	1:B:2:LYS:H	1.32	0.93
1:B:256:LYS:H	1:B:256:LYS:HD2	1.35	0.92
1:B:216:LEU:HD12	1:B:219:ASN:HD22	1.40	0.86
1:B:2:LYS:HG2	1:B:3:LYS:H	1.44	0.82
1:A:16:ILE:HD11	1:A:151:SER:HB2	1.61	0.82
1:A:256:LYS:HD2	1:A:256:LYS:H	1.44	0.81
1:A:198:GLU:HG2	1:A:202:LYS:HE2	1.66	0.77
1:B:217:LEU:HD11	1:B:221:ILE:HD12	1.74	0.68
1:A:168:GLN:HG2	1:A:241:LYS:O	1.94	0.67
1:B:256:LYS:O	1:B:257:ASN:HB2	1.94	0.67
1:A:16:ILE:HD13	1:A:212:CYS:SG	2.34	0.67
1:A:52:PRO:HG2	1:A:87:GLU:HG2	1.76	0.67
1:B:218:ALA:HB1	1:B:223:LEU:HD11	1.78	0.64
1:A:14:LYS:HD2	1:A:163:ALA:O	1.97	0.64
1:B:190:LYS:HA	1:B:190:LYS:HE2	1.79	0.63
1:B:2:LYS:HG2	1:B:3:LYS:N	2.12	0.62
1:B:233:ILE:N	1:B:233:ILE:HD12	2.15	0.62
1:A:14:LYS:HG3	1:A:163:ALA:HB1	1.83	0.60
1:A:141:ILE:HD12	1:A:200:LEU:HG	1.84	0.59
1:A:2:LYS:HD3	1:A:26:ASP:OD2	2.03	0.58
1:A:-1:HIS:O	1:A:1:MSE:HB3	2.03	0.57
1:B:199:PHE:O	1:B:203:THR:HG23	2.05	0.57
1:B:141:ILE:CD1	1:B:206:ILE:HG21	2.35	0.56
1:B:1:MSE:HG3	1:B:2:LYS:N	2.12	0.56
1:B:256:LYS:CD	1:B:256:LYS:H	2.15	0.56
1:A:246:PRO:HG2	1:A:251:TYR:CE2	2.41	0.55
1:B:32:GLN:HB3	1:B:35:PHE:CD1	2.42	0.54
1:B:245:ILE:N	1:B:245:ILE:HD12	2.22	0.54
1:A:228:ASN:HD22	1:B:64:HIS:CE1	2.26	0.54
1:B:44:LYS:HG3	1:B:72:GLU:CG	2.38	0.53
1:A:228:ASN:OD1	1:B:244:LEU:HD22	2.10	0.52
1:A:16:ILE:HD11	1:A:151:SER:CB	2.37	0.52
1:B:141:ILE:HG12	1:B:206:ILE:HG21	1.91	0.51
1:B:107:ASP:HA	1:B:110:LYS:HE2	1.92	0.51
1:A:95:PHE:CG	1:A:104:LEU:HD13	2.45	0.51
1:A:115:PHE:CD1	1:A:200:LEU:HD13	2.45	0.51

Continued on next page...

Continued from previous page...

Atom-1	Atom-2	Interatomic distance (Å)	Clash overlap (Å)
1:B:44:LYS:HG3	1:B:72:GLU:CD	2.31	0.51
1:B:48:VAL:HG11	1:B:50:TYR:CZ	2.46	0.51
1:B:48:VAL:HG11	1:B:50:TYR:OH	2.12	0.50
1:A:-2:SER:HB2	1:A:145:TYR:CZ	2.47	0.50
1:A:169:LYS:O	1:A:173:LYS:HG3	2.12	0.50
1:A:157:GLN:O	1:A:158:ASN:HB2	2.11	0.49
1:B:216:LEU:HD12	1:B:219:ASN:ND2	2.20	0.48
1:A:233:ILE:HD12	1:A:233:ILE:N	2.28	0.48
1:A:228:ASN:HD21	1:B:244:LEU:HD21	1.78	0.48
1:B:156:TYR:HA	2:B:1001:C5P:N4	2.29	0.48
1:B:45:CYS:O	1:B:73:THR:HA	2.14	0.48
1:A:137:CYS:O	1:A:141:ILE:HG13	2.13	0.47
1:B:66:ILE:CD1	1:B:72:GLU:HA	2.45	0.47
1:B:199:PHE:O	1:B:203:THR:CG2	2.62	0.47
1:B:226:ASN:C	1:B:227:LEU:HD22	2.35	0.46
1:A:131:THR:HG22	1:A:188:HIS:CD2	2.51	0.46
1:A:168:GLN:HB3	1:A:242:ASP:OD2	2.16	0.46
1:B:95:PHE:CG	1:B:104:LEU:HD13	2.51	0.45
1:A:132:SER:HB2	2:A:2001:C5P:O3'	2.16	0.45
1:A:206:ILE:C	1:A:206:ILE:HD12	2.37	0.45
1:B:2:LYS:CG	1:B:3:LYS:H	2.21	0.45
1:B:256:LYS:HD2	1:B:256:LYS:N	2.17	0.45
1:A:-1:HIS:HA	1:A:144:GLY:O	2.17	0.45
1:B:30:CYS:HB3	1:B:136:MSE:SE	2.67	0.44
1:A:39:TYR:CE1	1:A:43:LYS:HE2	2.53	0.44
2:A:2001:C5P:H5'1	2:A:2001:C5P:H6	1.99	0.44
1:B:17:ASP:HB3	1:B:20:ARG:HD2	2.00	0.43
1:B:132:SER:HB2	2:B:1001:C5P:O3'	2.19	0.43
1:B:2:LYS:CG	1:B:3:LYS:N	2.81	0.43
1:B:48:VAL:CG1	1:B:50:TYR:CZ	3.02	0.43
1:B:12:SER:HB3	1:B:154:ASP:OD2	2.19	0.43
1:B:66:ILE:HD13	1:B:71:TYR:O	2.19	0.43
1:A:16:ILE:CD1	1:A:151:SER:HB2	2.41	0.43
1:A:137:CYS:SG	1:A:150:LEU:HD21	2.58	0.43
1:A:154:ASP:H	2:A:2001:C5P:C2	2.31	0.42
1:A:-1:HIS:ND1	1:A:1:MSE:N	2.67	0.42
1:B:44:LYS:HG3	1:B:72:GLU:HG2	2.02	0.42
1:B:104:LEU:HD12	1:B:104:LEU:HA	1.90	0.42
1:B:153:ILE:HB	1:B:217:LEU:HD22	2.02	0.42
1:A:95:PHE:CD2	1:A:104:LEU:HD13	2.55	0.41
1:B:195:LYS:HA	1:B:195:LYS:HD3	1.80	0.41

Continued on next page...

Continued from previous page...

Atom-1	Atom-2	Interatomic distance (Å)	Clash overlap (Å)
1:B:5:ILE:HD13	1:B:25:PHE:HB2	2.02	0.41
1:B:233:ILE:CD1	1:B:233:ILE:N	2.82	0.41
1:B:83:GLN:O	1:B:87:GLU:HG2	2.21	0.41
1:B:113:LYS:HB2	1:B:113:LYS:HE3	1.78	0.41
1:A:2:LYS:HG2	1:A:3:LYS:N	2.35	0.41
1:B:141:ILE:CG1	1:B:206:ILE:HG21	2.50	0.41
1:A:106:TYR:HA	1:A:109:PHE:HB3	2.02	0.41
1:A:158:ASN:O	1:A:159:GLY:C	2.59	0.41
1:B:85:HIS:CE1	1:B:86:LEU:HG	2.56	0.41
1:B:106:TYR:O	1:B:110:LYS:HG2	2.22	0.40
1:A:201:GLU:HG3	1:A:206:ILE:O	2.22	0.40
1:A:-2:SER:HB2	1:A:145:TYR:OH	2.21	0.40
1:A:45:CYS:O	1:A:73:THR:HA	2.21	0.40
1:A:38:LYS:HG2	1:A:235:GLU:HA	2.04	0.40

There are no symmetry-related clashes.

5.3 Torsion angles ⓘ

5.3.1 Protein backbone ⓘ

In the following table, the Percentiles column shows the percent Ramachandran outliers of the chain as a percentile score with respect to all X-ray entries followed by that with respect to entries of similar resolution.

The Analysed column shows the number of residues for which the backbone conformation was analysed, and the total number of residues.

Mol	Chain	Analysed	Favoured	Allowed	Outliers	Percentiles	
1	A	244/262 (93%)	233 (96%)	10 (4%)	1 (0%)	39	28
1	B	220/262 (84%)	211 (96%)	8 (4%)	1 (0%)	34	22
All	All	464/524 (88%)	444 (96%)	18 (4%)	2 (0%)	39	28

All (2) Ramachandran outliers are listed below:

Mol	Chain	Res	Type
1	A	228	ASN
1	B	155	PHE

5.3.2 Protein sidechains ⓘ

In the following table, the Percentiles column shows the percent sidechain outliers of the chain as a percentile score with respect to all X-ray entries followed by that with respect to entries of similar resolution.

The Analysed column shows the number of residues for which the sidechain conformation was analysed, and the total number of residues.

Mol	Chain	Analysed	Rotameric	Outliers	Percentiles	
1	A	224/233 (96%)	218 (97%)	6 (3%)	52	45
1	B	203/233 (87%)	200 (98%)	3 (2%)	72	70
All	All	427/466 (92%)	418 (98%)	9 (2%)	61	56

All (9) residues with a non-rotameric sidechain are listed below:

Mol	Chain	Res	Type
1	A	1	MSE
1	A	104	LEU
1	A	168	GLN
1	A	200	LEU
1	A	237	ASN
1	A	256	LYS
1	B	190	LYS
1	B	203	THR
1	B	256	LYS

Some sidechains can be flipped to improve hydrogen bonding and reduce clashes. All (20) such sidechains are listed below:

Mol	Chain	Res	Type
1	A	9	ASN
1	A	31	ASN
1	A	64	HIS
1	A	67	GLN
1	A	83	GLN
1	A	111	GLN
1	A	188	HIS
1	A	191	ASN
1	A	214	ASN
1	A	228	ASN
1	A	234	GLN
1	B	31	ASN
1	B	32	GLN

Continued on next page...

Continued from previous page...

Mol	Chain	Res	Type
1	B	69	GLN
1	B	85	HIS
1	B	111	GLN
1	B	127	ASN
1	B	128	GLN
1	B	191	ASN
1	B	219	ASN

5.3.3 RNA ⓘ

There are no RNA molecules in this entry.

5.4 Non-standard residues in protein, DNA, RNA chains ⓘ

There are no non-standard protein/DNA/RNA residues in this entry.

5.5 Carbohydrates ⓘ

There are no carbohydrates in this entry.

5.6 Ligand geometry ⓘ

2 ligands are modelled in this entry.

In the following table, the Counts columns list the number of bonds (or angles) for which Mogul statistics could be retrieved, the number of bonds (or angles) that are observed in the model and the number of bonds (or angles) that are defined in the chemical component dictionary. The Link column lists molecule types, if any, to which the group is linked. The Z score for a bond length (or angle) is the number of standard deviations the observed value is removed from the expected value. A bond length (or angle) with $|Z| > 2$ is considered an outlier worth inspection. RMSZ is the root-mean-square of all Z scores of the bond lengths (or angles).

Mol	Type	Chain	Res	Link	Bond lengths			Bond angles		
					Counts	RMSZ	$\# Z > 2$	Counts	RMSZ	$\# Z > 2$
2	C5P	A	2001	-	17,22,22	3.53	3 (17%)	22,33,33	2.68	9 (40%)
2	C5P	B	1001	-	17,22,22	3.64	5 (29%)	22,33,33	2.67	10 (45%)

In the following table, the Chirals column lists the number of chiral outliers, the number of chiral centers analysed, the number of these observed in the model and the number defined in the chemical component dictionary. Similar counts are reported in the Torsion and Rings columns. '-' means

no outliers of that kind were identified.

Mol	Type	Chain	Res	Link	Chirals	Torsions	Rings
2	C5P	A	2001	-	-	0/6/26/26	0/2/2/2
2	C5P	B	1001	-	-	0/6/26/26	0/2/2/2

All (8) bond length outliers are listed below:

Mol	Chain	Res	Type	Atoms	Z	Observed(Å)	Ideal(Å)
2	B	1001	C5P	P-O5'	-4.01	1.46	1.60
2	A	2001	C5P	P-O5'	-3.88	1.47	1.60
2	B	1001	C5P	O4'-C4'	-2.09	1.40	1.45
2	B	1001	C5P	O4'-C1'	2.66	1.44	1.41
2	A	2001	C5P	C4-N3	3.62	1.42	1.35
2	B	1001	C5P	C4-N3	3.71	1.42	1.35
2	A	2001	C5P	C6-N1	13.01	1.54	1.35
2	B	1001	C5P	C6-N1	13.25	1.54	1.35

All (19) bond angle outliers are listed below:

Mol	Chain	Res	Type	Atoms	Z	Observed(°)	Ideal(°)
2	B	1001	C5P	C6-N1-C2	-5.26	112.76	121.28
2	A	2001	C5P	C6-N1-C2	-5.00	113.18	121.28
2	B	1001	C5P	O4'-C1'-N1	-3.82	100.04	108.08
2	A	2001	C5P	O4'-C1'-N1	-3.26	101.20	108.08
2	A	2001	C5P	C5-C4-N3	-2.92	118.12	121.80
2	B	1001	C5P	C5-C4-N3	-2.91	118.13	121.80
2	A	2001	C5P	O2P-P-O5'	-2.77	98.58	106.56
2	B	1001	C5P	O5'-P-O1P	-2.37	101.10	107.14
2	A	2001	C5P	O4'-C4'-C5'	-2.32	101.01	109.32
2	B	1001	C5P	O4'-C4'-C5'	-2.16	101.58	109.32
2	B	1001	C5P	O2P-P-O5'	-2.05	100.65	106.56
2	B	1001	C5P	N4-C4-N3	2.22	120.54	116.50
2	A	2001	C5P	N4-C4-N3	2.42	120.92	116.50
2	B	1001	C5P	O3P-P-O5'	4.55	119.66	106.56
2	A	2001	C5P	O3P-P-O5'	4.73	120.19	106.56
2	B	1001	C5P	O5'-C5'-C4'	4.86	127.04	109.12
2	A	2001	C5P	O5'-C5'-C4'	5.19	128.25	109.12
2	A	2001	C5P	C2-N3-C4	5.48	123.35	115.61
2	B	1001	C5P	C2-N3-C4	5.70	123.65	115.61

There are no chirality outliers.

There are no torsion outliers.

There are no ring outliers.

2 monomers are involved in 5 short contacts:

Mol	Chain	Res	Type	Clashes	Symm-Clashes
2	A	2001	C5P	3	0
2	B	1001	C5P	2	0

5.7 Other polymers [i](#)

There are no such residues in this entry.

5.8 Polymer linkage issues [i](#)

There are no chain breaks in this entry.

6 Fit of model and data ⓘ

6.1 Protein, DNA and RNA chains ⓘ

In the following table, the column labelled ‘#RSRZ> 2’ contains the number (and percentage) of RSRZ outliers, followed by percent RSRZ outliers for the chain as percentile scores relative to all X-ray entries and entries of similar resolution. The OWAB column contains the minimum, median, 95th percentile and maximum values of the occupancy-weighted average B-factor per residue. The column labelled ‘Q< 0.9’ lists the number of (and percentage) of residues with an average occupancy less than 0.9.

Mol	Chain	Analysed	<RSRZ>	#RSRZ>2	OWAB(Å ²)	Q<0.9
1	A	245/262 (93%)	0.69	25 (10%) 9 10	24, 36, 62, 85	0
1	B	221/262 (84%)	0.86	26 (11%) 6 6	26, 38, 61, 70	0
All	All	466/524 (88%)	0.77	51 (10%) 7 8	24, 37, 62, 85	0

All (51) RSRZ outliers are listed below:

Mol	Chain	Res	Type	RSRZ
1	A	158	ASN	6.7
1	A	160	SER	5.9
1	A	159	GLY	5.6
1	B	238	ASN	5.0
1	B	156	TYR	4.8
1	B	227	LEU	4.6
1	B	216	LEU	4.4
1	B	23	ASN	4.4
1	B	230	ASN	4.4
1	A	227	LEU	4.4
1	A	-1	HIS	4.4
1	B	229	SER	4.4
1	B	228	ASN	4.3
1	B	235	GLU	4.1
1	A	188	HIS	4.0
1	A	167	LYS	3.8
1	B	219	ASN	3.7
1	A	-2	SER	3.6
1	A	237	ASN	3.6
1	B	24	ASP	3.5
1	A	238	ASN	3.4
1	A	174	LEU	3.2
1	A	172	LEU	3.2
1	B	35	PHE	3.1

Continued on next page...

Continued from previous page...

Mol	Chain	Res	Type	RSRZ
1	B	249	GLU	3.1
1	B	226	ASN	3.0
1	A	48	VAL	3.0
1	B	237	ASN	3.0
1	A	230	ASN	3.0
1	B	232	ILE	2.9
1	B	234	GLN	2.8
1	B	48	VAL	2.8
1	A	24	ASP	2.8
1	B	89	GLU	2.7
1	A	228	ASN	2.7
1	A	165	ASP	2.7
1	A	76	ILE	2.6
1	B	191	ASN	2.6
1	A	47	ALA	2.5
1	B	138	ALA	2.5
1	A	258	ILE	2.5
1	A	-3	GLY	2.4
1	B	223	LEU	2.4
1	B	6	ILE	2.3
1	B	241	LYS	2.2
1	A	169	LYS	2.2
1	B	150	LEU	2.1
1	B	231	PHE	2.1
1	A	28	PHE	2.1
1	A	6	ILE	2.1
1	A	173	LYS	2.0

6.2 Non-standard residues in protein, DNA, RNA chains [i](#)

There are no non-standard protein/DNA/RNA residues in this entry.

6.3 Carbohydrates [i](#)

There are no carbohydrates in this entry.

6.4 Ligands [i](#)

In the following table, the Atoms column lists the number of modelled atoms in the group and the number defined in the chemical component dictionary. LLDF column lists the quality of electron density of the group with respect to its neighbouring residues in protein, DNA or RNA chains.

The B-factors column lists the minimum, median, 95th percentile and maximum values of B factors of atoms in the group. The column labelled 'Q< 0.9' lists the number of atoms with occupancy less than 0.9.

Mol	Type	Chain	Res	Atoms	RSCC	RSR	LLDF	B-factors(\AA^2)	Q<0.9
2	C5P	A	2001	21/21	0.93	0.14	-0.13	30,35,37,41	0
2	C5P	B	1001	21/21	0.84	0.16	-0.29	46,51,57,58	0

6.5 Other polymers [i](#)

There are no such residues in this entry.