



Full wwPDB X-ray Structure Validation Report ⓘ

Jan 31, 2016 – 10:01 PM GMT

PDB ID : 1RS7
Title : Rat neuronal NOS heme domain with D-phenylalanine-D-nitroarginine amide bound
Authors : Flinspach, M.; Li, H.; Jamal, J.; Yang, W.; Huang, H.; Silverman, R.B.; Poulos, T.L.
Deposited on : 2003-12-09
Resolution : 1.95 Å(reported)

This is a Full wwPDB X-ray Structure Validation Report for a publicly released PDB entry.
We welcome your comments at validation@mail.wwpdb.org
A user guide is available at
<http://wwpdb.org/validation/2016/XrayValidationReportHelp>
with specific help available everywhere you see the ⓘ symbol.

The following versions of software and data (see [references ⓘ](#)) were used in the production of this report:

MolProbity : 4.02b-467
Mogul : 1.7 (RC4), CSD as536be (2015)
Xtriage (Phenix) : 1.9-1692
EDS : rb-20026688
Percentile statistics : 20151230.v01 (using entries in the PDB archive December 30th 2015)
Refmac : 5.8.0135
CCP4 : 6.5.0
Ideal geometry (proteins) : Engh & Huber (2001)
Ideal geometry (DNA, RNA) : Parkinson et al. (1996)
Validation Pipeline (wwPDB-VP) : trunk26865

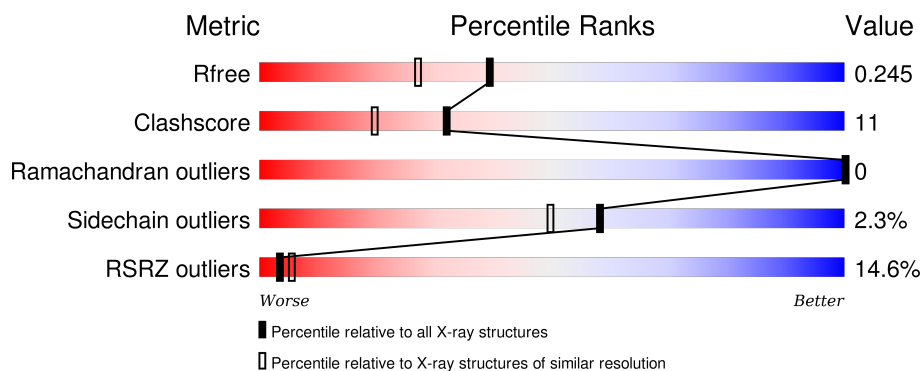
1 Overall quality at a glance

The following experimental techniques were used to determine the structure:

X-RAY DIFFRACTION

The reported resolution of this entry is 1.95 Å.

Percentile scores (ranging between 0-100) for global validation metrics of the entry are shown in the following graphic. The table shows the number of entries on which the scores are based.



Metric	Whole archive (#Entries)	Similar resolution (#Entries, resolution range(Å))
R_{free}	91344	1833 (1.96-1.96)
Clashscore	102246	1953 (1.96-1.96)
Ramachandran outliers	100387	1936 (1.96-1.96)
Sidechain outliers	100360	1936 (1.96-1.96)
RSRZ outliers	91569	1835 (1.96-1.96)

The table below summarises the geometric issues observed across the polymeric chains and their fit to the electron density. The red, orange, yellow and green segments on the lower bar indicate the fraction of residues that contain outliers for ≥ 3 , 2, 1 and 0 types of geometric quality criteria. A grey segment represents the fraction of residues that are not modelled. The numeric value for each fraction is indicated below the corresponding segment, with a dot representing fractions $\leq 5\%$. The upper red bar (where present) indicates the fraction of residues that have poor fit to the electron density. The numeric value is given above the bar.

Mol	Chain	Length	Quality of chain
1	A	421	
1	B	421	

The following table lists non-polymeric compounds, carbohydrate monomers and non-standard residues in protein, DNA, RNA chains that are outliers for geometric or electron-density-fit criteria:

Mol	Type	Chain	Res	Chirality	Geometry	Clashes	Electron density
7	D7P	A	797	-	-	-	X
7	D7P	B	798	-	-	-	X

2 Entry composition [i](#)

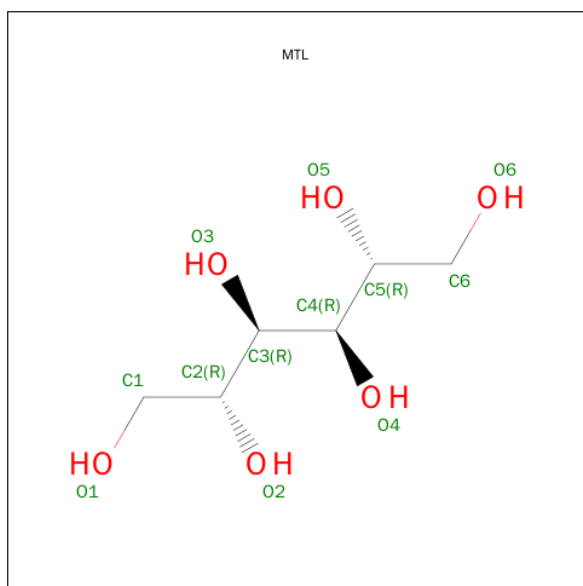
There are 8 unique types of molecules in this entry. The entry contains 7408 atoms, of which 0 are hydrogens and 0 are deuteriums.

In the tables below, the ZeroOcc column contains the number of atoms modelled with zero occupancy, the AltConf column contains the number of residues with at least one atom in alternate conformation and the Trace column contains the number of residues modelled with at most 2 atoms.

- Molecule 1 is a protein called Nitric-oxide synthase, brain.

Mol	Chain	Residues	Atoms					ZeroOcc	AltConf	Trace
1	A	407	Total	C	N	O	S	0	0	0
			3313	2121	566	605	21			
1	B	410	Total	C	N	O	S	0	0	0
			3341	2138	573	609	21			

- Molecule 2 is D-MANNITOL (three-letter code: MTL) (formula: C₆H₁₄O₆).



Mol	Chain	Residues	Atoms			ZeroOcc	AltConf
2	B	1	Total	C	O	0	0
			12	6	6		

- Molecule 3 is ACETATE ION (three-letter code: ACT) (formula: C₂H₃O₂).

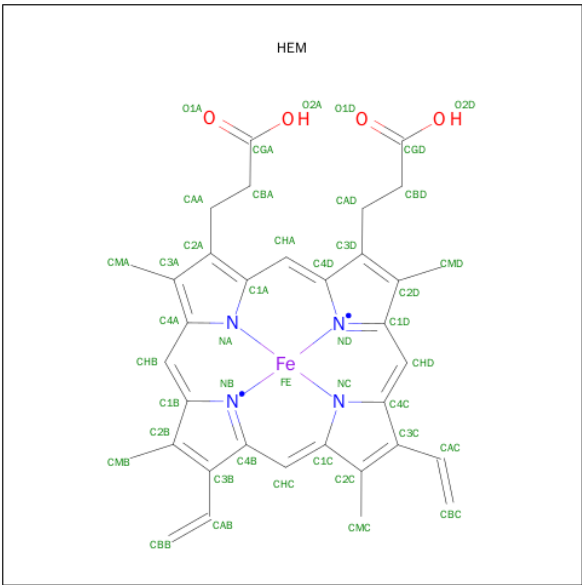


Mol	Chain	Residues	Atoms			ZeroOcc	AltConf
3	A	1	Total	C	O	0	0
			4	2	2		
3	B	1	Total	C	O	0	0
			4	2	2		

- Molecule 4 is ZINC ION (three-letter code: ZN) (formula: Zn).

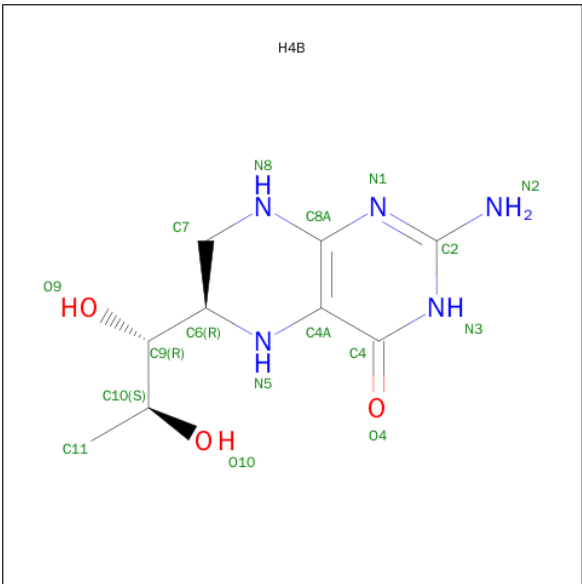
Mol	Chain	Residues	Atoms		ZeroOcc	AltConf
4	A	1	Total	Zn	0	0
			1	1		

- Molecule 5 is PROTOPORPHYRIN IX CONTAINING FE (three-letter code: HEM) (formula: C₃₄H₃₂FeN₄O₄).



Mol	Chain	Residues	Atoms					ZeroOcc	AltConf
5	A	1	Total	C	Fe	N	O	0	0
			43	34	1	4	4		
5	B	1	Total	C	Fe	N	O	0	0
			43	34	1	4	4		

- Molecule 6 is 5,6,7,8-TETRAHYDROBIOPTERIN (three-letter code: H4B) (formula: $C_9H_{15}N_5O_3$).



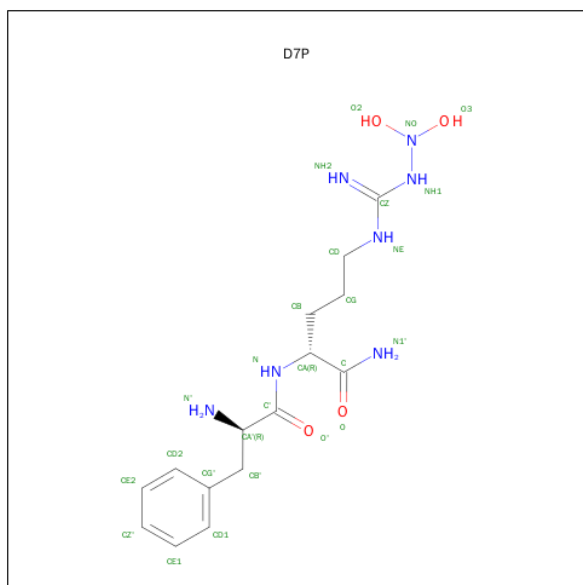
Mol	Chain	Residues	Atoms				ZeroOcc	AltConf
6	A	1	Total	C	N	O	0	0
			17	9	5	3		

Continued on next page...

Continued from previous page...

Mol	Chain	Residues	Atoms				ZeroOcc	AltConf
6	B	1	Total	C	N	O	0	0
			17	9	5	3		

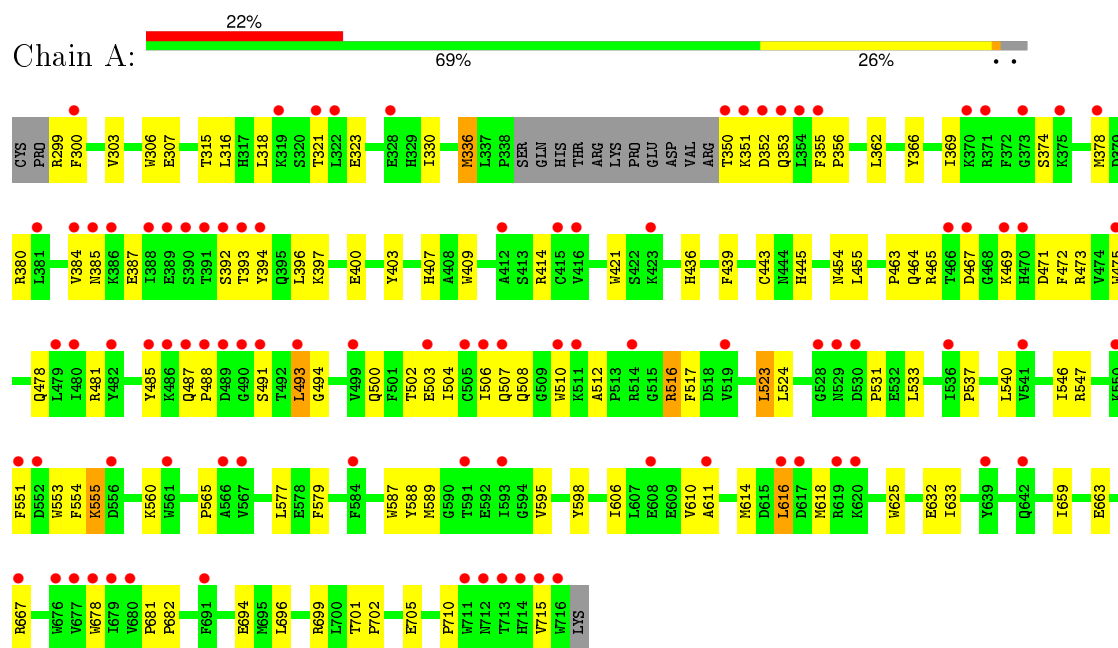
- Molecule 7 is D-PHENYLALANYL-N 5 -[(2,2-DIHYDROXYHYDRAZINO)(IMINO)METHYL]-D-ORNITHINAMIDE (three-letter code: D7P) (formula: C₁₅H₂₅N₇O₄).



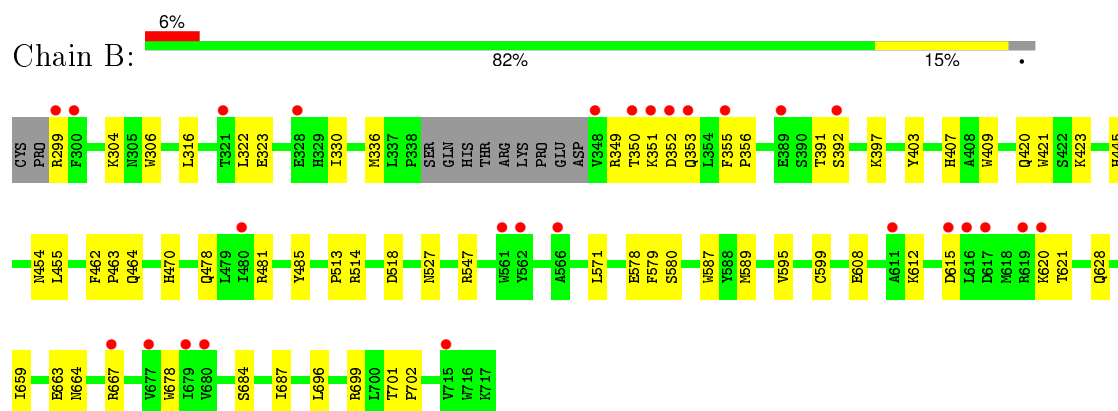
3 Residue-property plots [i](#)

These plots are drawn for all protein, RNA and DNA chains in the entry. The first graphic for a chain summarises the proportions of errors displayed in the second graphic. The second graphic shows the sequence view annotated by issues in geometry and electron density. Residues are color-coded according to the number of geometric quality criteria for which they contain at least one outlier: green = 0, yellow = 1, orange = 2 and red = 3 or more. A red dot above a residue indicates a poor fit to the electron density ($RSRZ > 2$). Stretches of 2 or more consecutive residues without any outlier are shown as a green connector. Residues present in the sample, but not in the model, are shown in grey.

- Molecule 1: Nitric-oxide synthase, brain



- Molecule 1: Nitric-oxide synthase, brain



4 Data and refinement statistics

Property	Value	Source
Space group	P 21 21 21	Depositor
Cell constants a, b, c, α , β , γ	52.09Å 110.91Å 165.03Å 90.00° 90.00° 90.00°	Depositor
Resolution (Å)	39.06 – 1.95 39.05 – 1.95	Depositor EDS
% Data completeness (in resolution range)	91.2 (39.06-1.95) 91.3 (39.05-1.95)	Depositor EDS
R_{merge}	0.04	Depositor
R_{sym}	0.04	Depositor
$\langle I/\sigma(I) \rangle$ ¹	4.50 (at 1.95Å)	Xtriage
Refinement program	CNS 1.1	Depositor
R, R_{free}	0.216 , 0.251 0.214 , 0.245	Depositor DCC
R_{free} test set	3221 reflections (5.28%)	DCC
Wilson B-factor (Å ²)	26.7	Xtriage
Anisotropy	0.670	Xtriage
Bulk solvent k_{sol} (e/Å ³), B_{sol} (Å ²)	0.38 , 52.0	EDS
Estimated twinning fraction	No twinning to report.	Xtriage
L-test for twinning ²	$\langle L \rangle = 0.49$, $\langle L^2 \rangle = 0.33$	Xtriage
Outliers	1 of 64184 reflections (0.002%)	Xtriage
F_o, F_c correlation	0.94	EDS
Total number of atoms	7408	wwPDB-VP
Average B, all atoms (Å ²)	35.0	wwPDB-VP

Xtriage's analysis on translational NCS is as follows: *The largest off-origin peak in the Patterson function is 3.94% of the height of the origin peak. No significant pseudotranslation is detected.*

¹Intensities estimated from amplitudes.

²Theoretical values of $\langle |L| \rangle$, $\langle L^2 \rangle$ for acentric reflections are 0.5, 0.375 respectively for untwinned datasets, and 0.333, 0.2 for perfectly twinned datasets.

5 Model quality [i](#)

5.1 Standard geometry [i](#)

Bond lengths and bond angles in the following residue types are not validated in this section: D7P, H4B, ZN, MTL, ACT, HEM

The Z score for a bond length (or angle) is the number of standard deviations the observed value is removed from the expected value. A bond length (or angle) with $|Z| > 5$ is considered an outlier worth inspection. RMSZ is the root-mean-square of all Z scores of the bond lengths (or angles).

Mol	Chain	Bond lengths		Bond angles	
		RMSZ	$\# Z > 5$	RMSZ	$\# Z > 5$
1	A	0.48	0/3406	0.66	1/4621 (0.0%)
1	B	0.52	0/3434	0.68	1/4656 (0.0%)
All	All	0.50	0/6840	0.67	2/9277 (0.0%)

There are no bond length outliers.

All (2) bond angle outliers are listed below:

Mol	Chain	Res	Type	Atoms	Z	Observed(°)	Ideal(°)
1	B	589	MET	N-CA-C	-5.37	96.50	111.00
1	A	589	MET	N-CA-C	-5.13	97.14	111.00

There are no chirality outliers.

There are no planarity outliers.

5.2 Too-close contacts [i](#)

In the following table, the Non-H and H(model) columns list the number of non-hydrogen atoms and hydrogen atoms in the chain respectively. The H(added) column lists the number of hydrogen atoms added and optimized by MolProbity. The Clashes column lists the number of clashes within the asymmetric unit, whereas Symm-Clashes lists symmetry related clashes.

Mol	Chain	Non-H	H(model)	H(added)	Clashes	Symm-Clashes
1	A	3313	0	3221	99	0
1	B	3341	0	3256	50	0
2	B	12	0	14	0	0
3	A	4	0	3	1	0
3	B	4	0	3	1	0
4	A	1	0	0	0	0
5	A	43	0	30	1	0

Continued on next page...

Continued from previous page...

Mol	Chain	Non-H	H(model)	H(added)	Clashes	Symm-Clashes
5	B	43	0	30	1	0
6	A	17	0	15	1	0
6	B	17	0	15	1	0
7	A	26	0	24	0	0
7	B	26	0	24	0	0
8	A	257	0	0	10	0
8	B	304	0	0	8	0
All	All	7408	0	6635	143	0

The all-atom clashscore is defined as the number of clashes found per 1000 atoms (including hydrogen atoms). The all-atom clashscore for this structure is 11.

All (143) close contacts within the same asymmetric unit are listed below, sorted by their clash magnitude.

Atom-1	Atom-2	Interatomic distance (Å)	Clash overlap (Å)
1:A:523:LEU:HD22	1:A:531:PRO:HB2	1.50	0.94
1:B:699:ARG:HG2	8:B:1175:HOH:O	1.73	0.88
1:A:396:LEU:CD2	1:A:577:LEU:HD12	2.10	0.81
1:A:611:ALA:HB1	1:A:616:LEU:HD11	1.65	0.77
1:A:595:VAL:HG11	1:A:682:PRO:HB2	1.67	0.76
1:A:667:ARG:HD3	8:A:1155:HOH:O	1.87	0.74
1:A:350:THR:HG22	1:A:352:ASP:H	1.52	0.74
1:B:350:THR:HG22	1:B:352:ASP:H	1.53	0.73
1:A:321:THR:HG21	8:A:1014:HOH:O	1.89	0.73
1:B:351:LYS:HE2	1:B:392:SER:OG	1.89	0.72
1:A:336:MET:HG3	1:B:306:TRP:NE1	2.05	0.71
1:A:502:THR:O	1:A:506:ILE:HG12	1.93	0.69
1:A:504:ILE:HA	1:A:507:GLN:HG2	1.76	0.67
1:A:350:THR:HB	1:A:353:GLN:HG3	1.77	0.67
1:A:306:TRP:NE1	1:B:336:MET:HG3	2.13	0.64
1:B:391:THR:O	1:B:392:SER:HB2	1.98	0.63
1:A:659:ILE:O	1:A:663:GLU:HG3	1.99	0.62
1:A:396:LEU:HD23	1:A:577:LEU:HD12	1.81	0.61
1:B:455:LEU:HD12	1:B:587:TRP:HB3	1.83	0.61
1:B:336:MET:HE3	8:B:878:HOH:O	2.00	0.61
1:B:664:ASN:O	1:B:667:ARG:HG2	2.00	0.61
1:B:323:GLU:O	1:B:699:ARG:HD3	2.01	0.60
1:A:396:LEU:HD21	1:A:577:LEU:HD12	1.84	0.59
1:A:478:GLN:HB2	1:A:481:ARG:HG3	1.85	0.58
1:A:350:THR:HB	1:A:353:GLN:CG	2.34	0.57
1:A:551:PHE:HB3	1:A:553:TRP:NE1	2.19	0.57

Continued on next page...

Continued from previous page...

Atom-1	Atom-2	Interatomic distance (Å)	Clash overlap (Å)
1:B:513:PRO:HG2	1:B:518:ASP:CG	2.23	0.57
1:A:350:THR:HG22	1:A:352:ASP:N	2.19	0.57
1:A:500:GLN:NE2	8:A:1116:HOH:O	2.38	0.56
1:B:659:ILE:O	1:B:663:GLU:HG3	2.05	0.56
1:A:374:SER:O	1:A:378:MET:HG2	2.06	0.56
1:A:467:ASP:OD1	1:A:469:LYS:HB2	2.06	0.55
1:A:611:ALA:CB	1:A:616:LEU:HD11	2.36	0.55
1:A:473:ARG:NH2	1:A:710:PRO:HD3	2.21	0.55
1:B:478:GLN:HB2	1:B:481:ARG:HG3	1.88	0.55
1:A:616:LEU:HD13	1:A:625:TRP:HB2	1.88	0.55
1:A:611:ALA:HB1	1:A:616:LEU:CD1	2.36	0.55
1:A:504:ILE:HA	1:A:507:GLN:CG	2.36	0.54
1:A:715:VAL:HG22	8:A:1142:HOH:O	2.08	0.53
1:A:299:ARG:HG3	1:A:318:LEU:HD21	1.90	0.53
1:A:436:HIS:HB2	8:A:994:HOH:O	2.08	0.53
1:A:351:LYS:HE2	1:A:392:SER:HA	1.90	0.53
1:A:560:LYS:NZ	8:A:1129:HOH:O	2.41	0.53
1:B:455:LEU:HD12	1:B:587:TRP:CB	2.39	0.53
3:A:860:ACT:H1	5:A:750:HEM:HMB2	1.90	0.52
1:B:684:SER:HB3	1:B:687:ILE:HD11	1.91	0.52
1:B:608:GLU:HG3	8:B:1052:HOH:O	2.09	0.52
1:A:551:PHE:HB3	1:A:553:TRP:CE2	2.45	0.52
1:A:396:LEU:HD12	1:A:400:GLU:HB3	1.92	0.52
1:A:614:MET:CE	1:A:632:GLU:HG3	2.41	0.51
1:A:614:MET:HE3	1:A:632:GLU:HG3	1.91	0.51
1:B:684:SER:HB3	1:B:687:ILE:CG1	2.41	0.51
1:A:351:LYS:HE2	1:A:392:SER:CB	2.41	0.50
1:A:464:GLN:HB3	1:A:579:PHE:CE2	2.47	0.50
1:A:565:PRO:HB3	1:A:588:TYR:CZ	2.47	0.50
1:A:504:ILE:O	1:A:508:GLN:HB2	2.11	0.50
1:A:475:TRP:HB2	1:A:523:LEU:HB3	1.93	0.50
1:A:715:VAL:HG23	1:A:715:VAL:O	2.12	0.49
1:A:516:ARG:HG2	1:A:517:PHE:CE1	2.48	0.49
1:B:571:LEU:HD11	1:B:578:GLU:HB3	1.95	0.49
1:A:439:PHE:CZ	1:A:443:CYS:SG	3.06	0.49
1:A:300:PHE:CD2	1:A:315:THR:HG22	2.48	0.49
1:A:696:LEU:HB3	1:B:330:ILE:HD11	1.93	0.49
1:A:504:ILE:CA	1:A:507:GLN:HG2	2.42	0.49
1:A:362:LEU:HD11	1:A:384:VAL:HG21	1.95	0.48
1:A:351:LYS:HE2	1:A:392:SER:CA	2.44	0.48
1:A:546:ILE:HG12	1:A:560:LYS:HA	1.95	0.48

Continued on next page...

Continued from previous page...

Atom-1	Atom-2	Interatomic distance (Å)	Clash overlap (Å)
1:B:355:PHE:N	1:B:356:PRO:HD2	2.27	0.48
1:A:523:LEU:HG	1:A:533:LEU:HD23	1.94	0.48
1:B:621:THR:HG22	8:B:1035:HOH:O	2.13	0.48
1:B:403:TYR:CE1	1:B:407:HIS:CE1	3.01	0.48
1:A:524:LEU:O	1:A:531:PRO:HA	2.14	0.48
1:B:350:THR:O	1:B:353:GLN:HG2	2.14	0.48
1:A:560:LYS:NZ	8:A:1128:HOH:O	2.47	0.47
1:A:307:GLU:HG3	8:B:965:HOH:O	2.14	0.47
1:A:506:ILE:HD11	1:A:512:ALA:HB2	1.96	0.47
1:A:503:GLU:O	1:A:507:GLN:HG2	2.14	0.47
1:B:595:VAL:O	1:B:599:CYS:HB2	2.14	0.47
1:A:491:SER:HB2	8:A:1045:HOH:O	2.14	0.47
1:A:465:ARG:NE	1:A:471:ASP:OD2	2.47	0.47
1:A:355:PHE:N	1:A:356:PRO:HD2	2.30	0.47
1:A:300:PHE:HD2	1:A:315:THR:HG22	1.80	0.47
1:A:523:LEU:HG	1:A:533:LEU:CD2	2.45	0.47
1:A:336:MET:HG3	1:B:306:TRP:CD1	2.50	0.47
1:B:612:LYS:O	1:B:615:ASP:N	2.42	0.46
1:B:684:SER:HB3	1:B:687:ILE:HG12	1.97	0.46
1:B:304:LYS:NZ	8:B:1072:HOH:O	2.46	0.46
1:A:387:GLU:OE2	1:A:394:TYR:HA	2.15	0.46
1:B:391:THR:O	1:B:392:SER:CB	2.63	0.46
1:A:555:LYS:HB3	1:A:555:LYS:HZ1	1.81	0.46
1:B:336:MET:HE1	1:B:678:TRP:CZ2	2.51	0.45
1:A:403:TYR:CE1	1:A:407:HIS:CE1	3.04	0.45
1:B:620:LYS:NZ	8:B:1163:HOH:O	2.48	0.45
1:A:523:LEU:CD2	1:A:531:PRO:HB2	2.33	0.45
1:A:350:THR:HB	1:A:353:GLN:OE1	2.16	0.45
1:B:409:TRP:CE3	1:B:421:TRP:HA	2.51	0.45
1:A:306:TRP:CD1	1:B:336:MET:HG3	2.52	0.45
1:A:366:TYR:HA	1:A:369:ILE:HG12	1.99	0.44
1:A:681:PRO:HA	1:A:682:PRO:HD3	1.77	0.44
1:A:350:THR:HG23	8:A:1078:HOH:O	2.17	0.44
1:A:330:ILE:HD11	1:B:696:LEU:HB3	1.98	0.44
1:A:396:LEU:HD12	1:A:400:GLU:CB	2.47	0.44
1:A:598:TYR:O	1:A:606:ILE:HG12	2.18	0.44
1:B:445:HIS:CD2	1:B:445:HIS:C	2.91	0.43
1:B:684:SER:HB3	1:B:687:ILE:CD1	2.48	0.43
1:B:420:GLN:HG2	3:B:861:ACT:H2	2.01	0.43
1:B:678:TRP:HA	6:B:761:H4B:N1	2.33	0.43
1:A:699:ARG:HH21	1:A:705:GLU:CD	2.22	0.43

Continued on next page...

Continued from previous page...

Atom-1	Atom-2	Interatomic distance (Å)	Clash overlap (Å)
1:A:618:MET:HA	1:A:625:TRP:CD1	2.54	0.43
1:A:299:ARG:HG3	1:A:318:LEU:CD2	2.48	0.43
1:A:455:LEU:HD12	1:A:587:TRP:HB3	2.00	0.43
1:A:493:LEU:HD23	1:A:494:GLY:N	2.33	0.43
1:B:485:TYR:CE1	1:B:514:ARG:HA	2.53	0.43
1:B:464:GLN:HB3	1:B:579:PHE:CE2	2.54	0.43
1:B:608:GLU:O	1:B:612:LYS:HG3	2.19	0.43
1:A:487:GLN:HB3	1:A:488:PRO:CD	2.49	0.43
1:A:487:GLN:HB3	1:A:488:PRO:HD2	2.01	0.42
1:A:610:VAL:HG21	1:A:633:ILE:HD11	2.02	0.42
1:B:701:THR:HA	1:B:702:PRO:C	2.40	0.42
1:A:409:TRP:CE3	1:A:421:TRP:HA	2.54	0.42
1:A:463:PRO:HB2	1:A:472:PHE:CE1	2.55	0.42
1:A:414:ARG:HD3	1:A:678:TRP:CD2	2.55	0.42
1:A:682:PRO:HG3	8:A:902:HOH:O	2.19	0.41
1:A:546:ILE:HG22	1:A:554:PHE:HE2	1.85	0.41
1:B:462:PHE:HB3	1:B:463:PRO:CD	2.50	0.41
1:B:322:LEU:HD13	1:B:699:ARG:NH2	2.36	0.41
1:B:571:LEU:HD13	1:B:580:SER:HA	2.03	0.41
1:A:393:THR:OG1	1:A:394:TYR:N	2.52	0.41
1:B:397:LYS:HD3	8:B:1043:HOH:O	2.19	0.41
1:A:537:PRO:HB2	1:A:540:LEU:HG	2.03	0.41
5:B:750:HEM:HBC2	5:B:750:HEM:CMC	2.50	0.41
1:A:510:TRP:HB2	1:A:533:LEU:HD13	2.02	0.41
1:B:351:LYS:HE2	1:B:392:SER:HG	1.84	0.41
1:A:323:GLU:O	1:A:699:ARG:HD3	2.21	0.41
1:A:678:TRP:HA	6:A:760:H4B:N1	2.35	0.41
1:A:523:LEU:HD22	1:A:531:PRO:CB	2.36	0.40
1:A:306:TRP:CE2	1:B:336:MET:HG3	2.55	0.40
1:A:701:THR:HA	1:A:702:PRO:C	2.42	0.40
1:A:380:ARG:NH1	1:A:397:LYS:HE2	2.37	0.40
1:B:470:HIS:HB3	1:B:527:ASN:ND2	2.37	0.40
1:A:445:HIS:C	1:A:445:HIS:CD2	2.95	0.40
1:A:632:GLU:OE2	1:B:628:GLN:NE2	2.53	0.40
1:A:303:VAL:CG1	1:A:694:GLU:O	2.70	0.40

There are no symmetry-related clashes.

5.3 Torsion angles

5.3.1 Protein backbone

In the following table, the Percentiles column shows the percent Ramachandran outliers of the chain as a percentile score with respect to all X-ray entries followed by that with respect to entries of similar resolution.

The Analysed column shows the number of residues for which the backbone conformation was analysed, and the total number of residues.

Mol	Chain	Analysed	Favoured	Allowed	Outliers	Percentiles	
1	A	403/421 (96%)	383 (95%)	20 (5%)	0	100	100
1	B	406/421 (96%)	394 (97%)	12 (3%)	0	100	100
All	All	809/842 (96%)	777 (96%)	32 (4%)	0	100	100

There are no Ramachandran outliers to report.

5.3.2 Protein sidechains

In the following table, the Percentiles column shows the percent sidechain outliers of the chain as a percentile score with respect to all X-ray entries followed by that with respect to entries of similar resolution.

The Analysed column shows the number of residues for which the sidechain conformation was analysed, and the total number of residues.

Mol	Chain	Analysed	Rotameric	Outliers	Percentiles	
1	A	363/377 (96%)	352 (97%)	11 (3%)	48	36
1	B	366/377 (97%)	360 (98%)	6 (2%)	70	66
All	All	729/754 (97%)	712 (98%)	17 (2%)	58	50

All (17) residues with a non-rotameric sidechain are listed below:

Mol	Chain	Res	Type
1	A	316	LEU
1	A	336	MET
1	A	385	ASN
1	A	454	ASN
1	A	485	TYR
1	A	493	LEU
1	A	516	ARG
1	A	523	LEU

Continued on next page...

Continued from previous page...

Mol	Chain	Res	Type
1	A	547	ARG
1	A	555	LYS
1	A	616	LEU
1	B	299	ARG
1	B	316	LEU
1	B	349	ARG
1	B	423	LYS
1	B	454	ASN
1	B	547	ARG

Some sidechains can be flipped to improve hydrogen bonding and reduce clashes. All (11) such sidechains are listed below:

Mol	Chain	Res	Type
1	A	385	ASN
1	A	454	ASN
1	A	500	GLN
1	A	697	ASN
1	A	712	ASN
1	B	364	GLN
1	B	454	ASN
1	B	527	ASN
1	B	535	GLN
1	B	664	ASN
1	B	697	ASN

5.3.3 RNA ⓘ

There are no RNA molecules in this entry.

5.4 Non-standard residues in protein, DNA, RNA chains ⓘ

There are no non-standard protein/DNA/RNA residues in this entry.

5.5 Carbohydrates ⓘ

There are no carbohydrates in this entry.

5.6 Ligand geometry

Of 10 ligands modelled in this entry, 1 is monoatomic - leaving 9 for Mogul analysis.

In the following table, the Counts columns list the number of bonds (or angles) for which Mogul statistics could be retrieved, the number of bonds (or angles) that are observed in the model and the number of bonds (or angles) that are defined in the chemical component dictionary. The Link column lists molecule types, if any, to which the group is linked. The Z score for a bond length (or angle) is the number of standard deviations the observed value is removed from the expected value. A bond length (or angle) with $|Z| > 2$ is considered an outlier worth inspection. RMSZ is the root-mean-square of all Z scores of the bond lengths (or angles).

Mol	Type	Chain	Res	Link	Bond lengths			Bond angles		
					Counts	RMSZ	$\# Z > 2$	Counts	RMSZ	$\# Z > 2$
5	HEM	A	750	1	30,50,50	2.81	12 (40%)	24,82,82	2.42	10 (41%)
6	H4B	A	760	-	13,18,18	2.52	3 (23%)	11,26,26	4.05	7 (63%)
7	D7P	A	797	-	20,26,26	1.19	1 (5%)	25,33,33	1.19	4 (16%)
3	ACT	A	860	-	1,3,3	2.41	1 (100%)	0,3,3	0.00	-
5	HEM	B	750	1	30,50,50	2.78	9 (30%)	24,82,82	2.14	9 (37%)
6	H4B	B	761	-	13,18,18	2.83	6 (46%)	11,26,26	4.13	7 (63%)
7	D7P	B	798	-	20,26,26	1.22	3 (15%)	25,33,33	1.30	4 (16%)
3	ACT	B	861	-	1,3,3	2.46	1 (100%)	0,3,3	0.00	-
2	MTL	B	871	-	11,11,11	1.02	0	14,14,14	0.88	0

In the following table, the Chirals column lists the number of chiral outliers, the number of chiral centers analysed, the number of these observed in the model and the number defined in the chemical component dictionary. Similar counts are reported in the Torsion and Rings columns. '-' means no outliers of that kind were identified.

Mol	Type	Chain	Res	Link	Chirals	Torsions	Rings
5	HEM	A	750	1	-	0/10/54/54	0/0/8/8
6	H4B	A	760	-	-	0/8/17/17	0/2/2/2
7	D7P	A	797	-	-	0/21/27/27	0/1/1/1
3	ACT	A	860	-	-	0/0/0/0	0/0/0/0
5	HEM	B	750	1	-	0/10/54/54	0/0/8/8
6	H4B	B	761	-	-	0/8/17/17	0/2/2/2
7	D7P	B	798	-	-	0/21/27/27	0/1/1/1
3	ACT	B	861	-	-	0/0/0/0	0/0/0/0
2	MTL	B	871	-	-	0/16/16/16	0/0/0/0

All (36) bond length outliers are listed below:

Mol	Chain	Res	Type	Atoms	Z	Observed(Å)	Ideal(Å)
5	A	750	HEM	C3D-C4D	-6.60	1.43	1.51
5	B	750	HEM	C3D-C4D	-6.38	1.43	1.51
5	A	750	HEM	C3B-C4B	-6.13	1.46	1.51
5	B	750	HEM	C3B-CAB	-6.01	1.40	1.51
5	B	750	HEM	C2D-C3D	-5.87	1.36	1.54
5	A	750	HEM	C3B-CAB	-5.74	1.40	1.51
5	A	750	HEM	C2D-C3D	-5.28	1.38	1.54
5	B	750	HEM	C3B-C4B	-5.06	1.47	1.51
5	B	750	HEM	C2C-C1C	-4.61	1.43	1.52
5	A	750	HEM	C2C-C1C	-4.57	1.43	1.52
5	B	750	HEM	C3C-CAC	-4.47	1.42	1.51
5	A	750	HEM	C3C-CAC	-4.46	1.43	1.51
5	A	750	HEM	C2B-C1B	-2.24	1.44	1.51
5	A	750	HEM	C2D-C1D	-2.20	1.44	1.51
6	B	761	H4B	C2-N3	2.06	1.39	1.35
7	B	798	D7P	CZ'-CE1	2.09	1.43	1.38
7	B	798	D7P	CA-N	2.09	1.50	1.45
5	A	750	HEM	CHD-C4C	2.31	1.41	1.36
7	B	798	D7P	CD2-CG'	2.32	1.43	1.38
3	A	860	ACT	CH3-C	2.41	1.52	1.48
5	B	750	HEM	CMD-C2D	2.41	1.58	1.53
3	B	861	ACT	CH3-C	2.46	1.52	1.48
7	A	797	D7P	CA-N	2.48	1.51	1.45
5	A	750	HEM	CMA-C3A	2.49	1.56	1.51
6	B	761	H4B	C7-N8	2.52	1.49	1.46
6	B	761	H4B	C8A-N1	2.61	1.39	1.34
5	A	750	HEM	C1C-NC	2.63	1.39	1.36
5	B	750	HEM	CAA-C2A	3.21	1.57	1.52
5	A	750	HEM	C4C-NC	3.41	1.40	1.36
5	B	750	HEM	C4C-NC	4.11	1.41	1.36
6	A	760	H4B	C6-N5	4.12	1.54	1.45
6	B	761	H4B	C4A-N5	4.72	1.48	1.38
6	A	760	H4B	C4A-N5	4.87	1.49	1.38
6	B	761	H4B	C6-N5	5.53	1.56	1.45
6	A	760	H4B	C4-N3	5.59	1.43	1.33
6	B	761	H4B	C4-N3	5.75	1.43	1.33

All (41) bond angle outliers are listed below:

Mol	Chain	Res	Type	Atoms	Z	Observed(°)	Ideal(°)
6	B	761	H4B	N3-C2-N1	-5.02	117.30	125.53
6	A	760	H4B	N3-C2-N1	-5.01	117.32	125.53
7	B	798	D7P	O-C-N1'	-3.59	117.76	123.08

Continued on next page...

Continued from previous page...

Mol	Chain	Res	Type	Atoms	Z	Observed(°)	Ideal(°)
5	A	750	HEM	CBA-CAA-C2A	-3.59	106.10	112.53
7	A	797	D7P	O-C-N1'	-3.39	118.05	123.08
5	A	750	HEM	CBD-CAD-C3D	-3.05	104.67	113.55
7	B	798	D7P	CB-CA-N	-2.94	105.28	110.87
5	B	750	HEM	CBA-CAA-C2A	-2.58	107.90	112.53
7	A	797	D7P	CB-CA-N	-2.54	106.03	110.87
5	B	750	HEM	CMA-C3A-C4A	-2.46	124.29	128.36
7	A	797	D7P	CA-C-N1'	2.01	119.84	116.60
7	B	798	D7P	CB'-CA'-C'	2.02	112.28	108.33
5	B	750	HEM	C3B-C4B-CHC	2.04	126.03	123.16
7	A	797	D7P	CB'-CA'-C'	2.08	112.40	108.33
6	B	761	H4B	C8A-C4A-N5	2.11	121.51	118.85
6	A	760	H4B	N2-C2-N3	2.23	120.89	117.20
7	B	798	D7P	CA-C-N1'	2.46	120.56	116.60
5	B	750	HEM	C2D-C3D-C4D	2.48	105.70	101.50
5	A	750	HEM	C3B-CAB-CBB	2.62	128.47	124.46
5	A	750	HEM	CMD-C2D-C3D	2.68	126.19	114.35
6	A	760	H4B	N2-C2-N1	2.78	121.80	117.20
5	B	750	HEM	CMD-C2D-C3D	2.81	126.78	114.35
5	B	750	HEM	CMB-C2B-C3B	2.82	123.56	116.53
6	B	761	H4B	N2-C2-N1	3.31	122.68	117.20
5	A	750	HEM	CAD-C3D-C4D	3.38	124.38	112.47
6	B	761	H4B	C2-N1-C8A	3.38	122.15	114.54
5	A	750	HEM	C3B-C4B-CHC	3.39	127.94	123.16
6	A	760	H4B	C4A-C8A-N8	3.47	122.52	118.43
5	A	750	HEM	CMB-C2B-C3B	3.54	125.36	116.53
5	A	750	HEM	C2D-C3D-C4D	3.57	107.55	101.50
6	B	761	H4B	C4A-C8A-N8	3.59	122.66	118.43
6	A	760	H4B	C2-N1-C8A	3.83	123.14	114.54
5	B	750	HEM	CAD-C3D-C4D	3.86	126.10	112.47
5	A	750	HEM	CMC-C2C-C3C	3.98	126.46	116.53
5	B	750	HEM	CMC-C2C-C3C	4.38	127.46	116.53
5	B	750	HEM	CAD-C3D-C2D	4.87	127.22	113.22
5	A	750	HEM	CAD-C3D-C2D	5.15	128.02	113.22
6	A	760	H4B	C4-N3-C2	6.18	124.52	115.94
6	B	761	H4B	C4-N3-C2	6.70	125.25	115.94
6	A	760	H4B	C4-C4A-C8A	8.58	122.33	114.56
6	B	761	H4B	C4-C4A-C8A	8.59	122.34	114.56

There are no chirality outliers.

There are no torsion outliers.

There are no ring outliers.

6 monomers are involved in 5 short contacts:

Mol	Chain	Res	Type	Clashes	Symm-Clashes
5	A	750	HEM	1	0
6	A	760	H4B	1	0
3	A	860	ACT	1	0
5	B	750	HEM	1	0
6	B	761	H4B	1	0
3	B	861	ACT	1	0

5.7 Other polymers [i](#)

There are no such residues in this entry.

5.8 Polymer linkage issues [i](#)

There are no chain breaks in this entry.

6 Fit of model and data ⓘ

6.1 Protein, DNA and RNA chains ⓘ

In the following table, the column labelled ‘#RSRZ> 2’ contains the number (and percentage) of RSRZ outliers, followed by percent RSRZ outliers for the chain as percentile scores relative to all X-ray entries and entries of similar resolution. The OWAB column contains the minimum, median, 95th percentile and maximum values of the occupancy-weighted average B-factor per residue. The column labelled ‘Q< 0.9’ lists the number of (and percentage) of residues with an average occupancy less than 0.9.

Mol	Chain	Analysed	<RSRZ>	#RSRZ>2	OWAB(Å ²)	Q<0.9
1	A	407/421 (96%)	1.30	92 (22%) 1 1	18, 38, 61, 75	0
1	B	410/421 (97%)	0.60	27 (6%) 22 31	18, 29, 51, 65	0
All	All	817/842 (97%)	0.95	119 (14%) 3 5	18, 32, 58, 75	0

All (119) RSRZ outliers are listed below:

Mol	Chain	Res	Type	RSRZ
1	A	355	PHE	9.0
1	B	300	PHE	7.4
1	A	715	VAL	7.2
1	A	490	GLY	6.6
1	A	491	SER	6.1
1	A	488	PRO	6.1
1	A	716	TRP	6.0
1	A	489	ASP	6.0
1	A	390	SER	5.4
1	A	351	LYS	5.4
1	A	470	HIS	5.3
1	A	388	ILE	5.1
1	B	348	VAL	5.1
1	A	392	SER	5.1
1	B	350	THR	5.0
1	A	391	THR	4.8
1	B	619	ARG	4.8
1	A	352	ASP	4.5
1	A	713	THR	4.5
1	A	389	GLU	4.4
1	B	611	ALA	4.4
1	A	381	LEU	4.4
1	A	506	ILE	4.3
1	A	551	PHE	4.3

Continued on next page...

Continued from previous page...

Mol	Chain	Res	Type	RSRZ
1	B	299	ARG	4.2
1	B	351	LYS	4.2
1	A	714	HIS	4.1
1	A	486	LYS	4.0
1	A	385	ASN	4.0
1	A	393	THR	3.9
1	A	386	LYS	3.9
1	A	350	THR	3.9
1	A	619	ARG	3.8
1	B	355	PHE	3.8
1	A	373	GLY	3.7
1	B	667	ARG	3.7
1	A	616	LEU	3.7
1	A	552	ASP	3.6
1	A	328	GLU	3.6
1	A	479	LEU	3.5
1	A	354	LEU	3.5
1	B	321	THR	3.4
1	A	507	GLN	3.4
1	B	392	SER	3.4
1	A	480	ILE	3.3
1	A	639	TYR	3.3
1	A	541	VAL	3.3
1	B	616	LEU	3.3
1	A	487	GLN	3.3
1	A	469	LYS	3.2
1	A	499	VAL	3.2
1	A	503	GLU	3.2
1	A	617	ASP	3.2
1	B	677	VAL	3.2
1	A	519	VAL	3.1
1	A	300	PHE	3.1
1	A	676	TRP	3.1
1	A	678	TRP	3.1
1	B	620	LYS	3.1
1	A	467	ASP	3.0
1	B	353	GLN	3.0
1	A	611	ALA	3.0
1	B	679	ILE	3.0
1	A	466	THR	2.9
1	A	321	THR	2.9
1	A	528	GLY	2.9

Continued on next page...

Continued from previous page...

Mol	Chain	Res	Type	RSRZ
1	A	679	ILE	2.9
1	A	561	TRP	2.9
1	A	567	VAL	2.9
1	A	677	VAL	2.9
1	A	712	ASN	2.8
1	A	511	LYS	2.8
1	A	584	PHE	2.7
1	B	352	ASP	2.7
1	B	615	ASP	2.7
1	A	514	ARG	2.7
1	A	416	VAL	2.6
1	A	593	ILE	2.6
1	A	536	ILE	2.6
1	B	480	ILE	2.6
1	A	378	MET	2.6
1	A	680	VAL	2.6
1	A	667	ARG	2.5
1	B	617	ASP	2.5
1	A	556	ASP	2.5
1	A	485	TYR	2.5
1	B	328	GLU	2.5
1	A	620	LYS	2.4
1	B	715	VAL	2.4
1	A	384	VAL	2.4
1	A	510	TRP	2.4
1	A	530	ASP	2.4
1	A	550	LYS	2.3
1	A	529	ASN	2.3
1	B	680	VAL	2.3
1	A	608	GLU	2.3
1	A	370	LYS	2.3
1	B	566	ALA	2.2
1	A	375	LYS	2.2
1	A	691	PHE	2.2
1	B	389	GLU	2.2
1	A	493	LEU	2.2
1	A	482	TYR	2.2
1	A	642	GLN	2.2
1	A	711	TRP	2.1
1	A	505	CYS	2.1
1	A	371	ARG	2.1
1	A	591	THR	2.1

Continued on next page...

Continued from previous page...

Mol	Chain	Res	Type	RSRZ
1	B	562	TYR	2.1
1	A	353	GLN	2.1
1	A	415	CYS	2.1
1	A	322	LEU	2.1
1	A	423	LYS	2.1
1	A	394	TYR	2.1
1	A	566	ALA	2.0
1	B	561	TRP	2.0
1	A	319	LYS	2.0
1	A	475	TRP	2.0
1	A	412	ALA	2.0

6.2 Non-standard residues in protein, DNA, RNA chains [i](#)

There are no non-standard protein/DNA/RNA residues in this entry.

6.3 Carbohydrates [i](#)

There are no carbohydrates in this entry.

6.4 Ligands [i](#)

In the following table, the Atoms column lists the number of modelled atoms in the group and the number defined in the chemical component dictionary. LLDF column lists the quality of electron density of the group with respect to its neighbouring residues in protein, DNA or RNA chains. The B-factors column lists the minimum, median, 95th percentile and maximum values of B factors of atoms in the group. The column labelled 'Q< 0.9' lists the number of atoms with occupancy less than 0.9.

Mol	Type	Chain	Res	Atoms	RSCC	RSR	LLDF	B-factors(Å ²)	Q<0.9
7	D7P	B	798	26/26	0.92	0.22	2.17	30,32,35,35	0
7	D7P	A	797	26/26	0.88	0.25	2.13	31,35,39,40	0
2	MTL	B	871	12/12	0.90	0.14	1.68	29,32,34,34	0
3	ACT	A	860	4/4	0.89	0.15	0.73	54,54,54,54	0
6	H4B	A	760	17/17	0.96	0.18	0.59	19,21,24,24	0
5	HEM	B	750	43/43	0.98	0.15	0.33	17,18,21,21	0
6	H4B	B	761	17/17	0.97	0.18	0.26	16,18,21,21	0
5	HEM	A	750	43/43	0.97	0.17	0.20	19,20,21,22	0
3	ACT	B	861	4/4	0.95	0.10	-0.88	40,40,40,40	0
4	ZN	A	900	1/1	1.00	0.07	-3.05	31,31,31,31	0

6.5 Other polymers [i](#)

There are no such residues in this entry.