



Full wwPDB X-ray Structure Validation Report ⓘ

Aug 2, 2016 – 09:48 AM EDT

PDB ID : 4RZV
Title : Crystal structure of the BRAF (R509H) kinase domain monomer bound to Vemurafenib
Authors : Wu, Y.; Gavathiotis, E.
Deposited on : 2014-12-24
Resolution : 2.99 Å(reported)

This is a Full wwPDB X-ray Structure Validation Report for a publicly released PDB entry.

We welcome your comments at validation@mail.wwpdb.org

A user guide is available at

<http://wwpdb.org/validation/2016/XrayValidationReportHelp>

with specific help available everywhere you see the ⓘ symbol.

The following versions of software and data (see [references ⓘ](#)) were used in the production of this report:

MolProbity : 4.02b-467
Mogul : 1.7.1 (RC1), CSD as537be (2016)
Xtriage (Phenix) : 1.9-1692
EDS : rb-20027939
Percentile statistics : 20151230.v01 (using entries in the PDB archive December 30th 2015)
Refmac : 5.8.0135
CCP4 : 6.5.0
Ideal geometry (proteins) : Engh & Huber (2001)
Ideal geometry (DNA, RNA) : Parkinson et al. (1996)
Validation Pipeline (wwPDB-VP) : rb-20027939

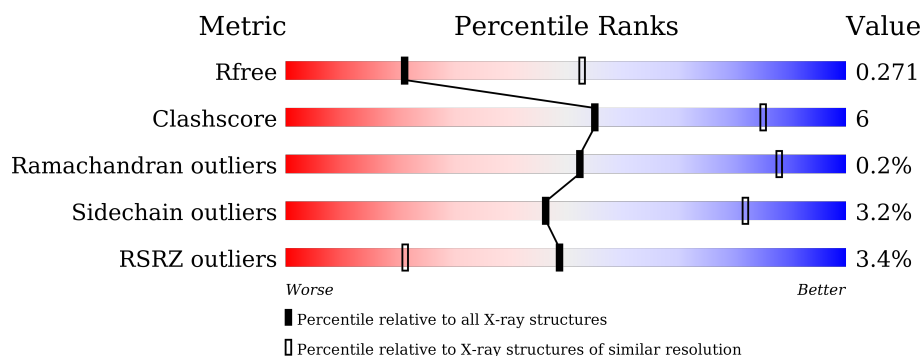
1 Overall quality at a glance

The following experimental techniques were used to determine the structure:

X-RAY DIFFRACTION

The reported resolution of this entry is 2.99 Å.

Percentile scores (ranging between 0-100) for global validation metrics of the entry are shown in the following graphic. The table shows the number of entries on which the scores are based.



Metric	Whole archive (#Entries)	Similar resolution (#Entries, resolution range(Å))
R_{free}	91344	1578 (3.00-3.00)
Clashscore	102246	1912 (3.00-3.00)
Ramachandran outliers	100387	1853 (3.00-3.00)
Sidechain outliers	100360	1856 (3.00-3.00)
RSRZ outliers	91569	1592 (3.00-3.00)

The table below summarises the geometric issues observed across the polymeric chains and their fit to the electron density. The red, orange, yellow and green segments on the lower bar indicate the fraction of residues that contain outliers for ≥ 3 , 2, 1 and 0 types of geometric quality criteria. A grey segment represents the fraction of residues that are not modelled. The numeric value for each fraction is indicated below the corresponding segment, with a dot representing fractions $\leq 5\%$. The upper red bar (where present) indicates the fraction of residues that have poor fit to the electron density. The numeric value is given above the bar.

Mol	Chain	Length	Quality of chain
1	A	281	<div> <div>3%</div> <div> <div></div> <div>78%</div> <div>14%</div> <div>• 7%</div> </div> </div>
1	B	281	<div> <div>4%</div> <div> <div></div> <div>78%</div> <div>17%</div> <div>• •</div> </div> </div>

2 Entry composition

There are 2 unique types of molecules in this entry. The entry contains 4318 atoms, of which 0 are hydrogens and 0 are deuteriums.

In the tables below, the ZeroOcc column contains the number of atoms modelled with zero occupancy, the AltConf column contains the number of residues with at least one atom in alternate conformation and the Trace column contains the number of residues modelled with at most 2 atoms.

- Molecule 1 is a protein called Serine/threonine-protein kinase B-raf.

Mol	Chain	Residues	Atoms					ZeroOcc	AltConf	Trace
1	A	261	Total	C	N	O	S	0	0	0
			2082	1321	369	379	13			
1	B	271	Total	C	N	O	S	0	0	0
			2170	1377	387	393	13			

There are 34 discrepancies between the modelled and reference sequences:

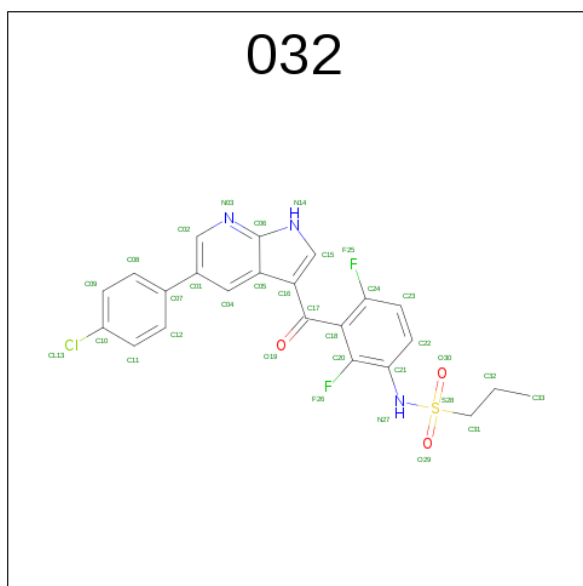
Chain	Residue	Modelled	Actual	Comment	Reference
A	509	HIS	ARG	ENGINEERED MUTATION	UNP P15056
A	543	ALA	ILE	ENGINEERED MUTATION	UNP P15056
A	544	SER	ILE	ENGINEERED MUTATION	UNP P15056
A	551	LYS	ILE	ENGINEERED MUTATION	UNP P15056
A	562	ARG	GLN	ENGINEERED MUTATION	UNP P15056
A	588	ASN	LEU	ENGINEERED MUTATION	UNP P15056
A	630	SER	LYS	ENGINEERED MUTATION	UNP P15056
A	667	GLU	PHE	ENGINEERED MUTATION	UNP P15056
A	673	SER	TYR	ENGINEERED MUTATION	UNP P15056
A	688	ARG	ALA	ENGINEERED MUTATION	UNP P15056
A	706	SER	LEU	ENGINEERED MUTATION	UNP P15056
A	709	ARG	GLN	ENGINEERED MUTATION	UNP P15056
A	713	GLU	SER	ENGINEERED MUTATION	UNP P15056
A	716	GLU	LEU	ENGINEERED MUTATION	UNP P15056
A	720	GLU	SER	ENGINEERED MUTATION	UNP P15056
A	722	SER	PRO	ENGINEERED MUTATION	UNP P15056
A	723	GLY	LYS	ENGINEERED MUTATION	UNP P15056
B	509	HIS	ARG	ENGINEERED MUTATION	UNP P15056
B	543	ALA	ILE	ENGINEERED MUTATION	UNP P15056
B	544	SER	ILE	ENGINEERED MUTATION	UNP P15056
B	551	LYS	ILE	ENGINEERED MUTATION	UNP P15056
B	562	ARG	GLN	ENGINEERED MUTATION	UNP P15056
B	588	ASN	LEU	ENGINEERED MUTATION	UNP P15056
B	630	SER	LYS	ENGINEERED MUTATION	UNP P15056
B	667	GLU	PHE	ENGINEERED MUTATION	UNP P15056

Continued on next page...

Continued from previous page...

Chain	Residue	Modelled	Actual	Comment	Reference
B	673	SER	TYR	ENGINEERED MUTATION	UNP P15056
B	688	ARG	ALA	ENGINEERED MUTATION	UNP P15056
B	706	SER	LEU	ENGINEERED MUTATION	UNP P15056
B	709	ARG	GLN	ENGINEERED MUTATION	UNP P15056
B	713	GLU	SER	ENGINEERED MUTATION	UNP P15056
B	716	GLU	LEU	ENGINEERED MUTATION	UNP P15056
B	720	GLU	SER	ENGINEERED MUTATION	UNP P15056
B	722	SER	PRO	ENGINEERED MUTATION	UNP P15056
B	723	GLY	LYS	ENGINEERED MUTATION	UNP P15056

- Molecule 2 is N-(3-{[5-(4-CHLOROPHENYL)-1H-PYRROLO[2,3-B]PYRIDIN-3-YL]CARBONYL}-2,4-DIFLUOROPHENYL)PROPANE-1-SULFONAMIDE (three-letter code: 032) (formula: C₂₃H₁₈ClF₂N₃O₃S).

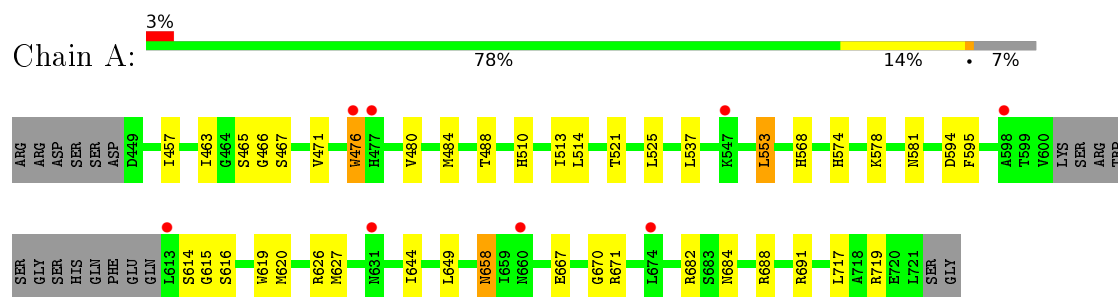


Mol	Chain	Residues	Atoms							ZeroOcc	AltConf
			Total	C	Cl	F	N	O	S		
2	A	1	33	23	1	2	3	3	1	0	0
2	B	1	33	23	1	2	3	3	1	0	0

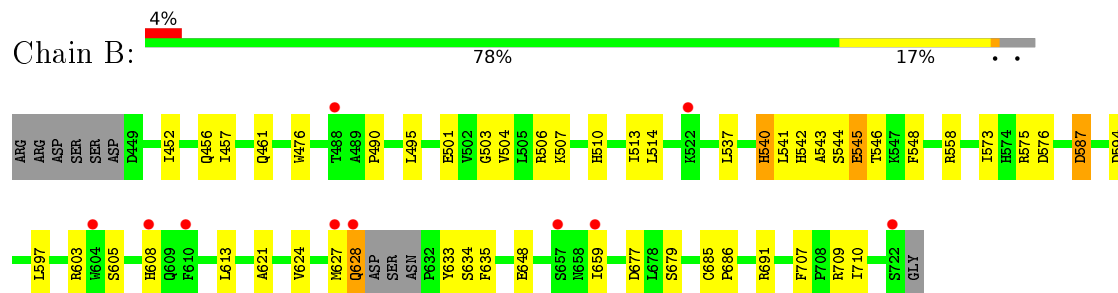
3 Residue-property plots

These plots are drawn for all protein, RNA and DNA chains in the entry. The first graphic for a chain summarises the proportions of errors displayed in the second graphic. The second graphic shows the sequence view annotated by issues in geometry and electron density. Residues are color-coded according to the number of geometric quality criteria for which they contain at least one outlier: green = 0, yellow = 1, orange = 2 and red = 3 or more. A red dot above a residue indicates a poor fit to the electron density ($\text{RSRZ} > 2$). Stretches of 2 or more consecutive residues without any outlier are shown as a green connector. Residues present in the sample, but not in the model, are shown in grey.

- Molecule 1: Serine/threonine-protein kinase B-raf



- Molecule 1: Serine/threonine-protein kinase B-raf



4 Data and refinement statistics

Property	Value	Source
Space group	I 2 2 2	Depositor
Cell constants a, b, c, α , β , γ	64.97Å 71.70Å 243.28Å 90.00° 90.00° 90.00°	Depositor
Resolution (Å)	44.77 – 2.99 44.77 – 2.99	Depositor EDS
% Data completeness (in resolution range)	82.9 (44.77-2.99) 83.0 (44.77-2.99)	Depositor EDS
R_{merge}	0.16	Depositor
R_{sym}	(Not available)	Depositor
$\langle I/\sigma(I) \rangle$ ¹	3.70 (at 3.01Å)	Xtriage
Refinement program	PHENIX (phenix.refine: dev_1760)	Depositor
R, R_{free}	0.204 , 0.267 0.210 , 0.271	Depositor DCC
R_{free} test set	470 reflections (4.76%)	DCC
Wilson B-factor (Å ²)	57.8	Xtriage
Anisotropy	0.167	Xtriage
Bulk solvent k_{sol} (e/Å ³), B_{sol} (Å ²)	0.33 , 39.7	EDS
L-test for twinning ²	$\langle L \rangle = 0.49$, $\langle L^2 \rangle = 0.32$	Xtriage
Estimated twinning fraction	No twinning to report.	Xtriage
F_o, F_c correlation	0.92	EDS
Total number of atoms	4318	wwPDB-VP
Average B, all atoms (Å ²)	55.0	wwPDB-VP

Xtriage's analysis on translational NCS is as follows: *The largest off-origin peak in the Patterson function is 4.65% of the height of the origin peak. No significant pseudotranslation is detected.*

¹Intensities estimated from amplitudes.

²Theoretical values of $\langle |L| \rangle$, $\langle L^2 \rangle$ for acentric reflections are 0.5, 0.333 respectively for untwinned datasets, and 0.375, 0.2 for perfectly twinned datasets.

5 Model quality

5.1 Standard geometry

Bond lengths and bond angles in the following residue types are not validated in this section: 032

The Z score for a bond length (or angle) is the number of standard deviations the observed value is removed from the expected value. A bond length (or angle) with $|Z| > 5$ is considered an outlier worth inspection. RMSZ is the root-mean-square of all Z scores of the bond lengths (or angles).

Mol	Chain	Bond lengths		Bond angles	
		RMSZ	$\# Z > 5$	RMSZ	$\# Z > 5$
1	A	0.26	0/2125	0.41	0/2865
1	B	0.22	0/2217	0.40	0/2986
All	All	0.24	0/4342	0.41	0/5851

There are no bond length outliers.

There are no bond angle outliers.

There are no chirality outliers.

There are no planarity outliers.

5.2 Too-close contacts

In the following table, the Non-H and H(model) columns list the number of non-hydrogen atoms and hydrogen atoms in the chain respectively. The H(added) column lists the number of hydrogen atoms added and optimized by MolProbity. The Clashes column lists the number of clashes within the asymmetric unit, whereas Symm-Clashes lists symmetry related clashes.

Mol	Chain	Non-H	H(model)	H(added)	Clashes	Symm-Clashes
1	A	2082	0	2100	24	0
1	B	2170	0	2183	32	0
2	A	33	0	18	2	0
2	B	33	0	18	3	0
All	All	4318	0	4319	54	0

The all-atom clashscore is defined as the number of clashes found per 1000 atoms (including hydrogen atoms). The all-atom clashscore for this structure is 6.

All (54) close contacts within the same asymmetric unit are listed below, sorted by their clash magnitude.

Atom-1	Atom-2	Interatomic distance (Å)	Clash overlap (Å)
1:A:594:ASP:H	2:A:801:032:HN27	1.23	0.83
1:B:594:ASP:H	2:B:801:032:HN27	1.33	0.74
1:B:452:ILE:HG23	1:B:456:GLN:HE21	1.61	0.64
1:A:537:LEU:HD21	1:A:649:LEU:HD21	1.81	0.62
1:B:627:MET:O	1:B:628:GLN:HB2	2.00	0.60
1:A:514:LEU:HD21	2:A:801:032:H15	1.85	0.58
1:A:682:ARG:HH21	1:A:684:ASN:HD21	1.52	0.58
1:A:658:ASN:OD1	1:A:658:ASN:N	2.37	0.57
1:B:501:GLU:HG2	1:B:597:LEU:HA	1.87	0.57
1:B:514:LEU:HD21	2:B:801:032:C15	2.37	0.54
1:B:544:SER:C	1:B:545:GLU:HG2	2.27	0.54
1:B:576:ASP:OD2	1:B:613:LEU:HD21	2.07	0.54
1:A:463:ILE:HB	1:A:471:VAL:HG23	1.89	0.53
1:B:621:ALA:HB3	1:B:624:VAL:HG23	1.90	0.53
1:A:626:ARG:NH1	1:A:670:GLY:O	2.43	0.51
1:B:514:LEU:HD21	2:B:801:032:H15	1.93	0.51
1:B:605:SER:HB3	1:B:608:HIS:CG	2.46	0.50
1:B:510:HIS:HB3	1:B:513:ILE:HG12	1.93	0.50
1:A:521:THR:HA	1:A:525:LEU:HD23	1.93	0.49
1:B:504:VAL:HA	1:B:507:LYS:HE3	1.96	0.48
1:A:578:LYS:NZ	1:A:581:ASN:OD1	2.47	0.47
1:A:465:SER:HA	1:A:466:GLY:HA3	1.57	0.47
1:B:587:ASP:N	1:B:587:ASP:OD1	2.48	0.47
1:B:634:SER:OG	1:B:635:PHE:N	2.48	0.47
1:A:667:GLU:O	1:A:671:ARG:HB2	2.16	0.46
1:A:620:MET:HB3	1:A:620:MET:HE2	1.84	0.46
1:B:457:ILE:HG12	1:B:476:TRP:HB2	1.97	0.45
1:B:501:GLU:HG2	1:B:597:LEU:HD23	1.98	0.45
1:A:614:SER:HA	1:A:615:GLY:HA2	1.52	0.45
1:B:490:PRO:HG2	1:B:495:LEU:HD12	1.98	0.45
1:B:537:LEU:O	1:B:541:LEU:HB2	2.18	0.44
1:A:616:SER:HB3	1:A:619:TRP:CZ3	2.52	0.44
1:A:619:TRP:HA	1:A:644:ILE:HG13	1.99	0.44
1:B:627:MET:HB3	1:B:628:GLN:H	1.48	0.44
1:A:626:ARG:HB2	1:A:627:MET:HA	2.00	0.44
1:A:688:ARG:HB3	1:A:717:LEU:HD13	2.01	0.43
1:B:542:HIS:NE2	1:B:648:GLU:OE1	2.39	0.43
1:B:503:GLY:HA2	1:B:506:ARG:HE	1.84	0.42
1:B:707:PHE:HA	1:B:710:ILE:HB	2.01	0.42
1:B:540:HIS:O	1:B:546:THR:OG1	2.30	0.42
1:A:553:LEU:HD12	1:A:649:LEU:HD22	2.01	0.42
1:B:573:ILE:HG22	1:B:575:ARG:HG3	2.01	0.42

Continued on next page...

Continued from previous page...

Atom-1	Atom-2	Interatomic distance (Å)	Clash overlap (Å)
1:B:613:LEU:HA	1:B:613:LEU:HD23	1.91	0.42
1:A:476:TRP:HE1	1:A:480:VAL:HG11	1.84	0.42
1:B:546:THR:O	1:B:548:PHE:N	2.47	0.41
1:B:677:ASP:OD2	1:B:679:SER:HB2	2.20	0.41
1:B:575:ARG:HG2	1:B:633:TYR:CD1	2.56	0.41
1:B:543:ALA:HB3	1:B:546:THR:HG21	2.03	0.41
1:A:568:HIS:O	1:B:558:ARG:NH1	2.45	0.41
1:A:574:HIS:CD2	1:A:595:PHE:HB3	2.55	0.41
1:A:719:ARG:NH1	1:B:507:LYS:HB2	2.36	0.41
1:A:510:HIS:HB3	1:A:513:ILE:HB	2.04	0.40
1:B:685:CYS:HA	1:B:686:PRO:HD3	1.93	0.40
1:A:467:SER:HB3	1:A:594:ASP:OD1	2.21	0.40

There are no symmetry-related clashes.

5.3 Torsion angles ⓘ

5.3.1 Protein backbone ⓘ

In the following table, the Percentiles column shows the percent Ramachandran outliers of the chain as a percentile score with respect to all X-ray entries followed by that with respect to entries of similar resolution.

The Analysed column shows the number of residues for which the backbone conformation was analysed, and the total number of residues.

Mol	Chain	Analysed	Favoured	Allowed	Outliers	Percentiles	
1	A	257/281 (92%)	245 (95%)	12 (5%)	0	100	100
1	B	267/281 (95%)	255 (96%)	11 (4%)	1 (0%)	39	80
All	All	524/562 (93%)	500 (95%)	23 (4%)	1 (0%)	52	88

All (1) Ramachandran outliers are listed below:

Mol	Chain	Res	Type
1	B	545	GLU

5.3.2 Protein sidechains ⓘ

In the following table, the Percentiles column shows the percent sidechain outliers of the chain as a percentile score with respect to all X-ray entries followed by that with respect to entries of similar resolution.

The Analysed column shows the number of residues for which the sidechain conformation was analysed, and the total number of residues.

Mol	Chain	Analysed	Rotameric	Outliers	Percentiles	
1	A	229/247 (93%)	222 (97%)	7 (3%)	47	83
1	B	238/247 (96%)	230 (97%)	8 (3%)	44	81
All	All	467/494 (94%)	452 (97%)	15 (3%)	46	82

All (15) residues with a non-rotameric sidechain are listed below:

Mol	Chain	Res	Type
1	A	457	ILE
1	A	476	TRP
1	A	484	MET
1	A	488	THR
1	A	553	LEU
1	A	658	ASN
1	A	691	ARG
1	B	461	GLN
1	B	540	HIS
1	B	587	ASP
1	B	603	ARG
1	B	628	GLN
1	B	659	ILE
1	B	691	ARG
1	B	709	ARG

Some sidechains can be flipped to improve hydrogen bonding and reduce clashes. All (1) such sidechains are listed below:

Mol	Chain	Res	Type
1	B	456	GLN

5.3.3 RNA ⓘ

There are no RNA molecules in this entry.

5.4 Non-standard residues in protein, DNA, RNA chains [i](#)

There are no non-standard protein/DNA/RNA residues in this entry.

5.5 Carbohydrates [i](#)

There are no carbohydrates in this entry.

5.6 Ligand geometry [i](#)

2 ligands are modelled in this entry.

In the following table, the Counts columns list the number of bonds (or angles) for which Mogul statistics could be retrieved, the number of bonds (or angles) that are observed in the model and the number of bonds (or angles) that are defined in the chemical component dictionary. The Link column lists molecule types, if any, to which the group is linked. The Z score for a bond length (or angle) is the number of standard deviations the observed value is removed from the expected value. A bond length (or angle) with $|Z| > 2$ is considered an outlier worth inspection. RMSZ is the root-mean-square of all Z scores of the bond lengths (or angles).

Mol	Type	Chain	Res	Link	Bond lengths			Bond angles		
					Counts	RMSZ	$\# Z > 2$	Counts	RMSZ	$\# Z > 2$
2	032	A	801	-	34,36,36	2.09	11 (32%)	39,53,53	3.49	9 (23%)
2	032	B	801	-	34,36,36	2.22	11 (32%)	39,53,53	3.49	10 (25%)

In the following table, the Chirals column lists the number of chiral outliers, the number of chiral centers analysed, the number of these observed in the model and the number defined in the chemical component dictionary. Similar counts are reported in the Torsion and Rings columns. '-' means no outliers of that kind were identified.

Mol	Type	Chain	Res	Link	Chirals	Torsions	Rings
2	032	A	801	-	-	0/17/21/21	0/4/4/4
2	032	B	801	-	-	0/17/21/21	0/4/4/4

All (22) bond length outliers are listed below:

Mol	Chain	Res	Type	Atoms	Z	Observed(Å)	Ideal(Å)
2	B	801	032	C16-C05	-8.83	1.35	1.42
2	A	801	032	C16-C05	-8.10	1.36	1.42
2	B	801	032	C07-C01	-3.94	1.38	1.49
2	A	801	032	C07-C01	-3.80	1.39	1.49
2	B	801	032	C04-C05	-2.63	1.37	1.42
2	B	801	032	C05-C06	-2.35	1.36	1.43

Continued on next page...

Continued from previous page...

Mol	Chain	Res	Type	Atoms	Z	Observed(Å)	Ideal(Å)
2	A	801	032	C04-C05	-2.29	1.37	1.42
2	A	801	032	C05-C06	-2.22	1.37	1.43
2	B	801	032	O19-C17	-2.18	1.18	1.22
2	A	801	032	O19-C17	-2.12	1.18	1.22
2	A	801	032	O29-S28	2.11	1.46	1.43
2	B	801	032	O30-S28	2.20	1.46	1.43
2	B	801	032	O29-S28	2.21	1.46	1.43
2	A	801	032	O30-S28	2.22	1.47	1.43
2	A	801	032	C02-N03	2.46	1.36	1.31
2	B	801	032	C06-N14	2.48	1.38	1.35
2	A	801	032	C06-N14	2.49	1.38	1.35
2	B	801	032	C02-N03	2.58	1.36	1.31
2	B	801	032	C16-C17	2.76	1.53	1.50
2	A	801	032	C16-C17	2.87	1.53	1.50
2	A	801	032	S28-N27	3.42	1.71	1.62
2	B	801	032	S28-N27	3.56	1.71	1.62

All (19) bond angle outliers are listed below:

Mol	Chain	Res	Type	Atoms	Z	Observed(°)	Ideal(°)
2	B	801	032	O30-S28-O29	-10.26	101.44	119.31
2	A	801	032	O30-S28-O29	-10.17	101.60	119.31
2	A	801	032	F25-C24-C23	-7.46	101.48	118.46
2	B	801	032	F25-C24-C23	-7.36	101.70	118.46
2	A	801	032	C02-C01-C07	-6.16	110.61	121.89
2	B	801	032	C01-C02-N03	-5.49	119.75	125.49
2	B	801	032	C02-C01-C07	-5.34	112.10	121.89
2	A	801	032	C01-C02-N03	-5.06	120.19	125.49
2	B	801	032	C08-C07-C01	-3.20	116.05	121.40
2	B	801	032	O30-S28-C31	2.13	111.80	107.94
2	A	801	032	C04-C01-C02	2.22	119.73	115.94
2	A	801	032	O30-S28-C31	2.22	111.98	107.94
2	B	801	032	C04-C01-C02	2.48	120.18	115.94
2	B	801	032	C04-C01-C07	3.26	127.72	121.14
2	A	801	032	C04-C01-C07	4.22	129.66	121.14
2	A	801	032	C24-C18-C20	5.65	119.87	115.27
2	B	801	032	C24-C18-C20	5.89	120.07	115.27
2	B	801	032	F25-C24-C18	12.52	138.33	118.13
2	A	801	032	F25-C24-C18	12.57	138.41	118.13

There are no chirality outliers.

There are no torsion outliers.

There are no ring outliers.

2 monomers are involved in 5 short contacts:

Mol	Chain	Res	Type	Clashes	Symm-Clashes
2	A	801	032	2	0
2	B	801	032	3	0

5.7 Other polymers [i](#)

There are no such residues in this entry.

5.8 Polymer linkage issues [i](#)

There are no chain breaks in this entry.

6 Fit of model and data [i](#)

6.1 Protein, DNA and RNA chains [i](#)

In the following table, the column labelled ‘#RSRZ> 2’ contains the number (and percentage) of RSRZ outliers, followed by percent RSRZ outliers for the chain as percentile scores relative to all X-ray entries and entries of similar resolution. The OWAB column contains the minimum, median, 95th percentile and maximum values of the occupancy-weighted average B-factor per residue. The column labelled ‘Q< 0.9’ lists the number of (and percentage) of residues with an average occupancy less than 0.9.

Mol	Chain	Analysed	<RSRZ>	#RSRZ>2	OWAB(Å ²)	Q<0.9
1	A	261/281 (92%)	0.25	8 (3%) 52 24	28, 50, 83, 104	0
1	B	271/281 (96%)	0.15	10 (3%) 45 19	30, 54, 87, 135	0
All	All	532/562 (94%)	0.20	18 (3%) 49 21	28, 52, 87, 135	0

All (18) RSRZ outliers are listed below:

Mol	Chain	Res	Type	RSRZ
1	B	608	HIS	3.3
1	B	522	LYS	3.2
1	B	604	TRP	3.0
1	B	722	SER	3.0
1	A	476	TRP	2.8
1	B	488	THR	2.8
1	B	659	ILE	2.8
1	A	547	LYS	2.7
1	A	613	LEU	2.7
1	A	660	ASN	2.6
1	A	477	HIS	2.4
1	A	631	ASN	2.4
1	B	628	GLN	2.3
1	A	674	LEU	2.3
1	B	627	MET	2.3
1	B	657	SER	2.2
1	B	610	PHE	2.2
1	A	598	ALA	2.1

6.2 Non-standard residues in protein, DNA, RNA chains [i](#)

There are no non-standard protein/DNA/RNA residues in this entry.

6.3 Carbohydrates [i](#)

There are no carbohydrates in this entry.

6.4 Ligands [i](#)

In the following table, the Atoms column lists the number of modelled atoms in the group and the number defined in the chemical component dictionary. LLDF column lists the quality of electron density of the group with respect to its neighbouring residues in protein, DNA or RNA chains. The B-factors column lists the minimum, median, 95th percentile and maximum values of B factors of atoms in the group. The column labelled 'Q< 0.9' lists the number of atoms with occupancy less than 0.9.

Mol	Type	Chain	Res	Atoms	RSCC	RSR	LLDF	B-factors(\AA^2)	Q<0.9
2	032	A	801	33/33	0.97	0.17	-0.44	21,35,45,78	0
2	032	B	801	33/33	0.96	0.18	-0.45	23,42,52,90	0

6.5 Other polymers [i](#)

There are no such residues in this entry.