



Full wwPDB X-ray Structure Validation Report ⓘ

Apr 11, 2016 – 05:36 PM EDT

PDB ID : 3S1F
Title : Asp169Glu mutant of maize cytokinin oxidase/dehydrogenase complexed with N6-isopentenyladenine
Authors : Kopecny, D.; Briozzo, P.; Morera, S.
Deposited on : 2011-05-15
Resolution : 2.00 Å(reported)

This is a Full wwPDB X-ray Structure Validation Report for a publicly released PDB entry.
We welcome your comments at validation@mail.wwpdb.org
A user guide is available at
<http://wwpdb.org/validation/2016/XrayValidationReportHelp>
with specific help available everywhere you see the ⓘ symbol.

The following versions of software and data (see [references ⓘ](#)) were used in the production of this report:

MolProbity : 4.02b-467
Mogul : 1.7.1 (RC1), CSD as537be (2016)
Xtriage (Phenix) : 1.9-1692
EDS : rb-20027107
Percentile statistics : 20151230.v01 (using entries in the PDB archive December 30th 2015)
Refmac : 5.8.0135
CCP4 : 6.5.0
Ideal geometry (proteins) : Engh & Huber (2001)
Ideal geometry (DNA, RNA) : Parkinson et al. (1996)
Validation Pipeline (wwPDB-VP) : rb-20027107

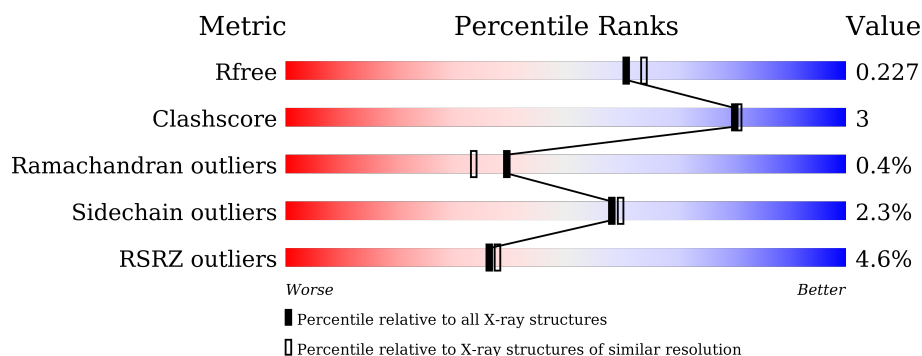
1 Overall quality at a glance

The following experimental techniques were used to determine the structure:

X-RAY DIFFRACTION

The reported resolution of this entry is 2.00 Å.

Percentile scores (ranging between 0-100) for global validation metrics of the entry are shown in the following graphic. The table shows the number of entries on which the scores are based.



Metric	Whole archive (#Entries)	Similar resolution (#Entries, resolution range(Å))
R_{free}	91344	6249 (2.00-2.00)
Clashscore	102246	7340 (2.00-2.00)
Ramachandran outliers	100387	7248 (2.00-2.00)
Sidechain outliers	100360	7247 (2.00-2.00)
RSRZ outliers	91569	6262 (2.00-2.00)

The table below summarises the geometric issues observed across the polymeric chains and their fit to the electron density. The red, orange, yellow and green segments on the lower bar indicate the fraction of residues that contain outliers for ≥ 3 , 2, 1 and 0 types of geometric quality criteria. A grey segment represents the fraction of residues that are not modelled. The numeric value for each fraction is indicated below the corresponding segment, with a dot representing fractions $\leq 5\%$. The upper red bar (where present) indicates the fraction of residues that have poor fit to the electron density. The numeric value is given above the bar.

Mol	Chain	Length	Quality of chain
1	A	516	

The following table lists non-polymeric compounds, carbohydrate monomers and non-standard residues in protein, DNA, RNA chains that are outliers for geometric or electron-density-fit criteria:

Mol	Type	Chain	Res	Chirality	Geometry	Clashes	Electron density
4	NAG	A	603	-	-	-	X
7	GOL	A	538	-	-	X	-

Continued on next page...

Continued from previous page...

Mol	Type	Chain	Res	Chirality	Geometry	Clashes	Electron density
7	GOL	A	539	-	-	-	X
7	GOL	A	541	-	-	-	X
7	GOL	A	543	-	-	-	X
7	GOL	A	544	-	-	X	X
7	GOL	A	545	-	-	-	X

2 Entry composition [i](#)

There are 8 unique types of molecules in this entry. The entry contains 4302 atoms, of which 0 are hydrogens and 0 are deuteriums.

In the tables below, the ZeroOcc column contains the number of atoms modelled with zero occupancy, the AltConf column contains the number of residues with at least one atom in alternate conformation and the Trace column contains the number of residues modelled with at most 2 atoms.

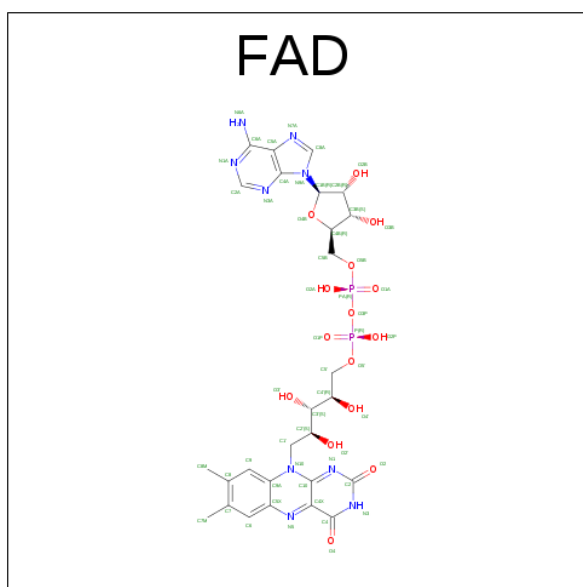
- Molecule 1 is a protein called Cytokinin dehydrogenase 1.

Mol	Chain	Residues	Atoms					ZeroOcc	AltConf	Trace
1	A	498	Total	C	N	O	S	0	2	0
			3803	2416	667	708	12			

There are 4 discrepancies between the modelled and reference sequences:

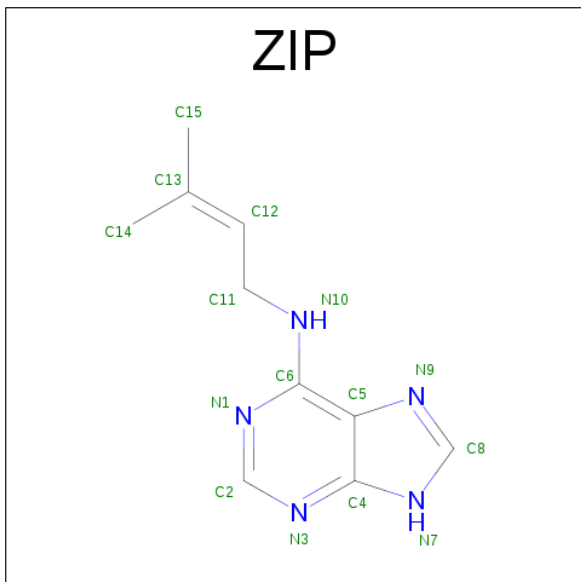
Chain	Residue	Modelled	Actual	Comment	Reference
A	79	ALA	GLY	SEE REMARK 999	UNP Q9T0N8
A	168	THR	ASN	SEE REMARK 999	UNP Q9T0N8
A	169	GLU	ASP	ENGINEERED MUTATION	UNP Q9T0N8
A	254	LEU	PHE	SEE REMARK 999	UNP Q9T0N8

- Molecule 2 is FLAVIN-ADENINE DINUCLEOTIDE (three-letter code: FAD) (formula: $C_{27}H_{33}N_9O_{15}P_2$).



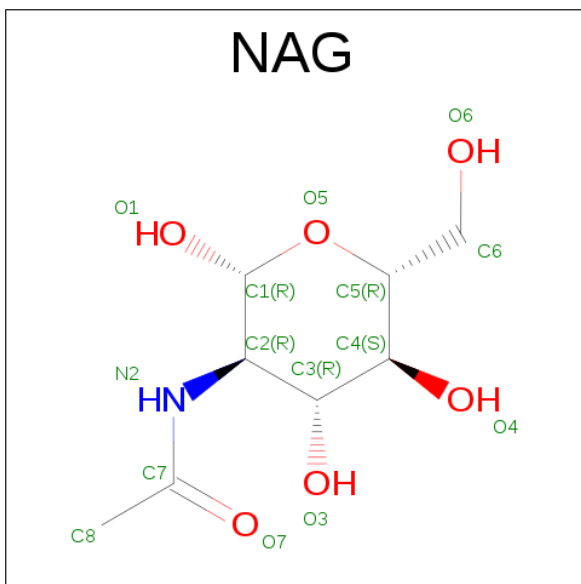
Mol	Chain	Residues	Atoms					ZeroOcc	AltConf
2	A	1	Total	C	N	O	P	0	0
			53	27	9	15	2		

- Molecule 3 is N-(3-METHYLBUT-2-EN-1-YL)-9H-PURIN-6-AMINE (three-letter code: ZIP) (formula: $C_{10}H_{13}N_5$).



Mol	Chain	Residues	Atoms			ZeroOcc	AltConf
3	A	1	Total	C	N	0	0
			15	10	5		

- Molecule 4 is SUGAR (N-ACETYL-D-GLUCOSAMINE) (three-letter code: NAG) (formula: $C_8H_{15}NO_6$).



Mol	Chain	Residues	Atoms				ZeroOcc	AltConf
4	A	1	Total	C	N	O	0	0
			14	8	1	5		

Continued on next page...

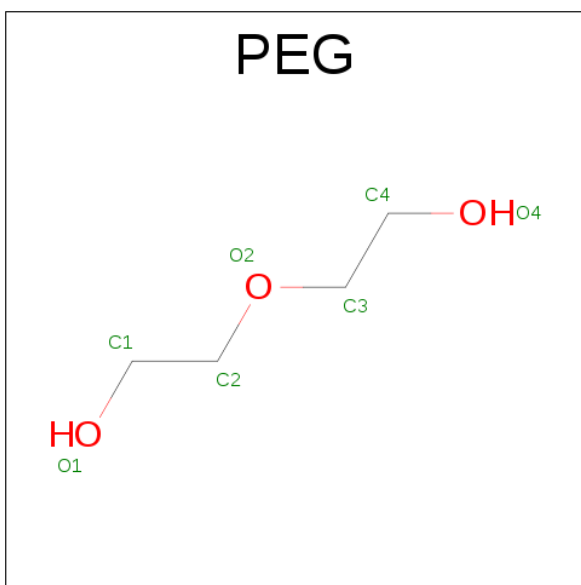
Continued from previous page...

Mol	Chain	Residues	Atoms				ZeroOcc	AltConf
4	A	1	Total	C	N	O	0	0
			14	8	1	5		
4	A	1	Total	C	N	O	0	0
			14	8	1	5		

- Molecule 5 is a polymer of unknown type called SUGAR (2-MER).

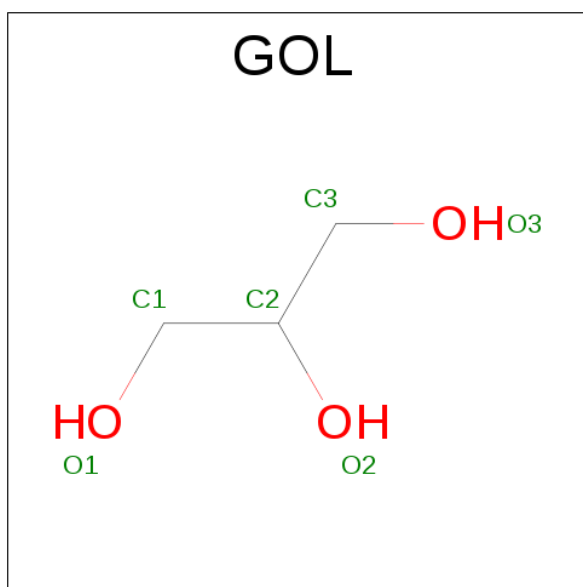
Mol	Chain	Residues	Atoms				ZeroOcc	AltConf
5	A	2	Total	C	N	O	0	0
			28	16	2	10		

- Molecule 6 is DI(HYDROXYETHYL)ETHER (three-letter code: PEG) (formula: C₄H₁₀O₃).



Mol	Chain	Residues	Atoms			ZeroOcc	AltConf
6	A	1	Total	C	O	0	0
			7	4	3		

- Molecule 7 is GLYCEROL (three-letter code: GOL) (formula: C₃H₈O₃).



Mol	Chain	Residues	Atoms			ZeroOcc	AltConf
7	A	1	Total	C	O	0	0
			6	3	3		
7	A	1	Total	C	O	0	0
			6	3	3		
7	A	1	Total	C	O	0	0
			6	3	3		
7	A	1	Total	C	O	0	0
			6	3	3		
7	A	1	Total	C	O	0	0
			6	3	3		
7	A	1	Total	C	O	0	0
			6	3	3		
7	A	1	Total	C	O	0	0
			6	3	3		

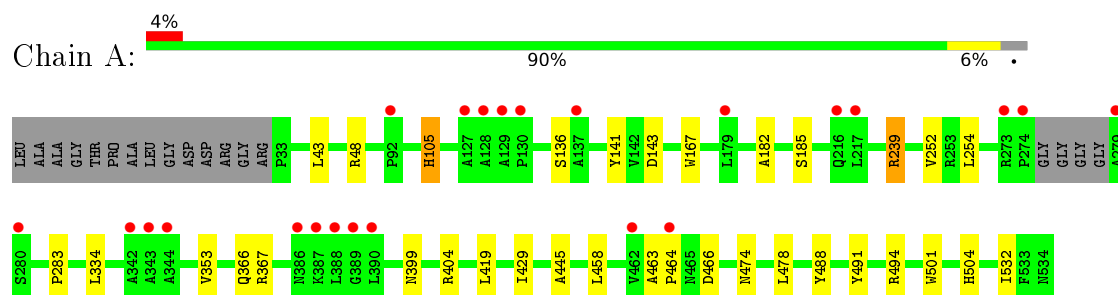
- Molecule 8 is water.

Mol	Chain	Residues	Atoms		ZeroOcc	AltConf
8	A	306	Total	O	0	0
			306	306		

3 Residue-property plots [i](#)

These plots are drawn for all protein, RNA and DNA chains in the entry. The first graphic for a chain summarises the proportions of errors displayed in the second graphic. The second graphic shows the sequence view annotated by issues in geometry and electron density. Residues are color-coded according to the number of geometric quality criteria for which they contain at least one outlier: green = 0, yellow = 1, orange = 2 and red = 3 or more. A red dot above a residue indicates a poor fit to the electron density ($\text{RSRZ} > 2$). Stretches of 2 or more consecutive residues without any outlier are shown as a green connector. Residues present in the sample, but not in the model, are shown in grey.

• Molecule 1: Cytokinin dehydrogenase 1



4 Data and refinement statistics

Property	Value	Source
Space group	C 1 2 1	Depositor
Cell constants a, b, c, α , β , γ	250.17Å 50.67Å 51.21Å 90.00° 94.02° 90.00°	Depositor
Resolution (Å)	31.19 – 2.00 29.89 – 2.00	Depositor EDS
% Data completeness (in resolution range)	(Not available) (31.19-2.00) 99.1 (29.89-2.00)	Depositor EDS
R_{merge}	0.06	Depositor
R_{sym}	(Not available)	Depositor
$\langle I/\sigma(I) \rangle$ ¹	3.03 (at 2.00Å)	Xtriage
Refinement program	BUSTER 2.8.0	Depositor
R, R_{free}	0.178 , 0.218 0.183 , 0.227	Depositor DCC
R_{free} test set	2178 reflections (5.31%)	DCC
Wilson B-factor (Å ²)	24.1	Xtriage
Anisotropy	0.088	Xtriage
Bulk solvent k_{sol} (e/Å ³), B_{sol} (Å ²)	0.38 , 54.5	EDS
Estimated twinning fraction	No twinning to report.	Xtriage
L-test for twinning ²	$\langle L \rangle = 0.47$, $\langle L^2 \rangle = 0.30$	Xtriage
Outliers	0 of 43220 reflections	Xtriage
F_o, F_c correlation	0.95	EDS
Total number of atoms	4302	wwPDB-VP
Average B, all atoms (Å ²)	29.0	wwPDB-VP

Xtriage's analysis on translational NCS is as follows: *The largest off-origin peak in the Patterson function is 5.96% of the height of the origin peak. No significant pseudotranslation is detected.*

¹Intensities estimated from amplitudes.

²Theoretical values of $\langle |L| \rangle$, $\langle L^2 \rangle$ for acentric reflections are 0.5, 0.375 respectively for untwinned datasets, and 0.333, 0.2 for perfectly twinned datasets.

5 Model quality [i](#)

5.1 Standard geometry [i](#)

Bond lengths and bond angles in the following residue types are not validated in this section: GOL, PEG, NAG, ZIP, FAD

The Z score for a bond length (or angle) is the number of standard deviations the observed value is removed from the expected value. A bond length (or angle) with $|Z| > 5$ is considered an outlier worth inspection. RMSZ is the root-mean-square of all Z scores of the bond lengths (or angles).

Mol	Chain	Bond lengths		Bond angles	
		RMSZ	$\# Z > 5$	RMSZ	$\# Z > 5$
1	A	0.50	0/3906	0.64	0/5321

There are no bond length outliers.

There are no bond angle outliers.

There are no chirality outliers.

There are no planarity outliers.

5.2 Too-close contacts [i](#)

In the following table, the Non-H and H(model) columns list the number of non-hydrogen atoms and hydrogen atoms in the chain respectively. The H(added) column lists the number of hydrogen atoms added and optimized by MolProbity. The Clashes column lists the number of clashes within the asymmetric unit, whereas Symm-Clashes lists symmetry related clashes.

Mol	Chain	Non-H	H(model)	H(added)	Clashes	Symm-Clashes
1	A	3803	0	3728	22	0
2	A	53	0	30	2	0
3	A	15	0	13	3	0
4	A	42	0	39	0	0
5	A	28	0	25	0	0
6	A	7	0	10	0	0
7	A	48	0	64	13	0
8	A	306	0	0	3	0
All	All	4302	0	3909	27	0

The all-atom clashscore is defined as the number of clashes found per 1000 atoms (including hydrogen atoms). The all-atom clashscore for this structure is 3.

All (27) close contacts within the same asymmetric unit are listed below, sorted by their clash

magnitude.

Atom-1	Atom-2	Interatomic distance (Å)	Clash overlap (Å)
7:A:538:GOL:H12	8:A:750:HOH:O	1.75	0.87
1:A:429:ILE:HG12	7:A:544:GOL:H2	1.66	0.75
1:A:105:HIS:HE1	2:A:535:FAD:HM71	1.64	0.63
1:A:474:ASN:HB3	7:A:539:GOL:H11	1.81	0.62
1:A:105:HIS:CE1	2:A:535:FAD:HM71	2.37	0.59
1:A:252:VAL:HG12	1:A:366:GLN:HG2	1.85	0.58
1:A:283:PRO:HG2	1:A:353:VAL:HG21	1.84	0.57
7:A:544:GOL:H32	7:A:545:GOL:H32	1.85	0.57
1:A:458:LEU:HD11	3:A:536:ZIP:H112	1.90	0.53
1:A:504:HIS:HE1	7:A:538:GOL:O2	1.91	0.52
1:A:48:ARG:HH11	7:A:542:GOL:H31	1.74	0.52
1:A:136:SER:HB3	1:A:141:TYR:CE1	2.45	0.51
1:A:463:ALA:HB3	1:A:466:ASP:HB2	1.92	0.50
1:A:504:HIS:CE1	7:A:538:GOL:H11	2.47	0.50
1:A:141:TYR:CD1	1:A:239:ARG:HD2	2.48	0.48
1:A:141:TYR:CE1	1:A:239:ARG:HD2	2.49	0.48
1:A:504:HIS:HD2	8:A:997:HOH:O	1.96	0.47
7:A:538:GOL:H31	8:A:750:HOH:O	2.13	0.47
1:A:167:TRP:O	1:A:185:SER:HB2	2.16	0.45
3:A:536:ZIP:H8	7:A:544:GOL:H31	1.99	0.44
1:A:445:ALA:H	7:A:538:GOL:C2	2.31	0.44
1:A:501:TRP:CE2	1:A:532:ILE:HG12	2.52	0.44
1:A:488:TYR:O	7:A:541:GOL:H32	2.18	0.43
1:A:478:LEU:HD11	7:A:539:GOL:H12	1.99	0.43
1:A:143:ASP:OD1	1:A:239:ARG:HD3	2.18	0.42
1:A:399:ASN:HB2	1:A:491:TYR:O	2.19	0.42
3:A:536:ZIP:C8	7:A:544:GOL:H31	2.51	0.40

There are no symmetry-related clashes.

5.3 Torsion angles ⓘ

5.3.1 Protein backbone ⓘ

In the following table, the Percentiles column shows the percent Ramachandran outliers of the chain as a percentile score with respect to all X-ray entries followed by that with respect to entries of similar resolution.

The Analysed column shows the number of residues for which the backbone conformation was analysed, and the total number of residues.

Mol	Chain	Analysed	Favoured	Allowed	Outliers	Percentiles	
1	A	496/516 (96%)	485 (98%)	9 (2%)	2 (0%)	39	33

All (2) Ramachandran outliers are listed below:

Mol	Chain	Res	Type
1	A	182	ALA
1	A	464	PRO

5.3.2 Protein sidechains ⓘ

In the following table, the Percentiles column shows the percent sidechain outliers of the chain as a percentile score with respect to all X-ray entries followed by that with respect to entries of similar resolution.

The Analysed column shows the number of residues for which the sidechain conformation was analysed, and the total number of residues.

Mol	Chain	Analysed	Rotameric	Outliers	Percentiles	
1	A	389/395 (98%)	379 (97%)	10 (3%)	54	54

All (10) residues with a non-rotameric sidechain are listed below:

Mol	Chain	Res	Type
1	A	43	LEU
1	A	105	HIS
1	A	239	ARG
1	A	254	LEU
1	A	334	LEU
1	A	367[A]	ARG
1	A	367[B]	ARG
1	A	404	ARG
1	A	419	LEU
1	A	494	ARG

Some sidechains can be flipped to improve hydrogen bonding and reduce clashes. All (2) such sidechains are listed below:

Mol	Chain	Res	Type
1	A	495	HIS
1	A	504	HIS

5.3.3 RNA ⓘ

There are no RNA molecules in this entry.

5.4 Non-standard residues in protein, DNA, RNA chains ⓘ

There are no non-standard protein/DNA/RNA residues in this entry.

5.5 Carbohydrates ⓘ

2 carbohydrates are modelled in this entry.

In the following table, the Counts columns list the number of bonds (or angles) for which Mogul statistics could be retrieved, the number of bonds (or angles) that are observed in the model and the number of bonds (or angles) that are defined in the chemical component dictionary. The Link column lists molecule types, if any, to which the group is linked. The Z score for a bond length (or angle) is the number of standard deviations the observed value is removed from the expected value. A bond length (or angle) with $|Z| > 2$ is considered an outlier worth inspection. RMSZ is the root-mean-square of all Z scores of the bond lengths (or angles).

Mol	Type	Chain	Res	Link	Bond lengths			Bond angles		
					Counts	RMSZ	# Z > 2	Counts	RMSZ	# Z > 2
5	NAG	A	604	1,5	14,14,15	1.43	2 (14%)	15,19,21	1.21	1 (6%)
5	NAG	A	605	5	14,14,15	1.42	1 (7%)	15,19,21	1.14	1 (6%)

In the following table, the Chirals column lists the number of chiral outliers, the number of chiral centers analysed, the number of these observed in the model and the number defined in the chemical component dictionary. Similar counts are reported in the Torsion and Rings columns. '-' means no outliers of that kind were identified.

Mol	Type	Chain	Res	Link	Chirals	Torsions	Rings
5	NAG	A	604	1,5	-	0/6/23/26	0/1/1/1
5	NAG	A	605	5	-	0/6/23/26	0/1/1/1

All (3) bond length outliers are listed below:

Mol	Chain	Res	Type	Atoms	Z	Observed(Å)	Ideal(Å)
5	A	604	NAG	C1-C2	2.06	1.55	1.52
5	A	604	NAG	O5-C1	2.42	1.47	1.43
5	A	605	NAG	C1-C2	3.88	1.58	1.52

All (2) bond angle outliers are listed below:

Mol	Chain	Res	Type	Atoms	Z	Observed(°)	Ideal(°)
5	A	604	NAG	C3-C4-C5	2.38	114.47	110.23
5	A	605	NAG	C1-O5-C5	3.11	116.71	112.14

There are no chirality outliers.

There are no torsion outliers.

There are no ring outliers.

No monomer is involved in short contacts.

5.6 Ligand geometry

14 ligands are modelled in this entry.

In the following table, the Counts columns list the number of bonds (or angles) for which Mogul statistics could be retrieved, the number of bonds (or angles) that are observed in the model and the number of bonds (or angles) that are defined in the chemical component dictionary. The Link column lists molecule types, if any, to which the group is linked. The Z score for a bond length (or angle) is the number of standard deviations the observed value is removed from the expected value. A bond length (or angle) with $|Z| > 2$ is considered an outlier worth inspection. RMSZ is the root-mean-square of all Z scores of the bond lengths (or angles).

Mol	Type	Chain	Res	Link	Bond lengths			Bond angles		
					Counts	RMSZ	$\# Z > 2$	Counts	RMSZ	$\# Z > 2$
2	FAD	A	535	1	52,58,58	2.02	11 (21%)	52,89,89	2.51	14 (26%)
3	ZIP	A	536	-	12,16,16	3.17	8 (66%)	10,21,21	4.94	5 (50%)
6	PEG	A	537	-	6,6,6	0.31	0	5,5,5	0.41	0
7	GOL	A	538	-	5,5,5	1.22	1 (20%)	5,5,5	1.51	1 (20%)
7	GOL	A	539	-	5,5,5	0.43	0	5,5,5	0.78	0
7	GOL	A	540	-	5,5,5	0.79	0	5,5,5	0.72	0
7	GOL	A	541	-	5,5,5	0.58	0	5,5,5	1.01	0
7	GOL	A	542	-	5,5,5	0.24	0	5,5,5	0.42	0
7	GOL	A	543	-	5,5,5	0.67	0	5,5,5	0.68	0
7	GOL	A	544	-	5,5,5	0.43	0	5,5,5	0.80	0
7	GOL	A	545	-	5,5,5	0.51	0	5,5,5	0.57	0
4	NAG	A	602	1	14,14,15	1.22	1 (7%)	15,19,21	1.07	1 (6%)
4	NAG	A	603	1	14,14,15	1.34	1 (7%)	15,19,21	1.01	1 (6%)
4	NAG	A	606	1	14,14,15	1.54	2 (14%)	15,19,21	0.96	1 (6%)

In the following table, the Chirals column lists the number of chiral outliers, the number of chiral centers analysed, the number of these observed in the model and the number defined in the chemical component dictionary. Similar counts are reported in the Torsion and Rings columns. '-' means no outliers of that kind were identified.

Mol	Type	Chain	Res	Link	Chirals	Torsions	Rings
2	FAD	A	535	1	-	0/30/50/50	0/6/6/6
3	ZIP	A	536	-	-	0/6/6/6	0/2/2/2
6	PEG	A	537	-	-	0/4/4/4	0/0/0/0
7	GOL	A	538	-	-	0/4/4/4	0/0/0/0
7	GOL	A	539	-	-	0/4/4/4	0/0/0/0
7	GOL	A	540	-	-	0/4/4/4	0/0/0/0
7	GOL	A	541	-	-	0/4/4/4	0/0/0/0
7	GOL	A	542	-	-	0/4/4/4	0/0/0/0
7	GOL	A	543	-	-	0/4/4/4	0/0/0/0
7	GOL	A	544	-	-	0/4/4/4	0/0/0/0
7	GOL	A	545	-	-	0/4/4/4	0/0/0/0
4	NAG	A	602	1	-	0/6/23/26	0/1/1/1
4	NAG	A	603	1	-	0/6/23/26	0/1/1/1
4	NAG	A	606	1	-	0/6/23/26	0/1/1/1

All (24) bond length outliers are listed below:

Mol	Chain	Res	Type	Atoms	Z	Observed(Å)	Ideal(Å)
3	A	536	ZIP	C11-N10	-7.71	1.32	1.45
3	A	536	ZIP	C4-N7	-4.16	1.29	1.35
3	A	536	ZIP	C4-N3	-3.23	1.31	1.37
2	A	535	FAD	C8M-C8	-2.70	1.45	1.51
3	A	536	ZIP	C5-N9	-2.49	1.30	1.39
3	A	536	ZIP	C2-N1	-2.48	1.29	1.33
3	A	536	ZIP	C2-N3	-2.43	1.27	1.32
2	A	535	FAD	C8A-N7A	-2.29	1.30	1.34
2	A	535	FAD	P-O2P	-2.22	1.45	1.55
3	A	536	ZIP	C5-C4	-2.06	1.35	1.40
7	A	538	GOL	O2-C2	-2.03	1.37	1.43
3	A	536	ZIP	C12-C13	2.14	1.38	1.32
4	A	606	NAG	C3-C2	2.16	1.57	1.52
2	A	535	FAD	C2B-C3B	2.47	1.60	1.53
4	A	603	NAG	C1-C2	2.59	1.56	1.52
2	A	535	FAD	O4B-C1B	2.61	1.45	1.41
4	A	602	NAG	C1-C2	2.73	1.56	1.52
2	A	535	FAD	C4-N3	3.58	1.39	1.33
4	A	606	NAG	C1-C2	3.67	1.57	1.52
2	A	535	FAD	C5X-N5	4.09	1.41	1.35
2	A	535	FAD	C4-C4X	4.33	1.50	1.41
2	A	535	FAD	C9A-N10	4.40	1.45	1.38
2	A	535	FAD	C2A-N3A	4.60	1.40	1.32
2	A	535	FAD	C4X-C10	7.22	1.54	1.40

All (23) bond angle outliers are listed below:

Mol	Chain	Res	Type	Atoms	Z	Observed(°)	Ideal(°)
3	A	536	ZIP	N3-C2-N1	-10.21	120.85	128.87
2	A	535	FAD	C4X-C10-N10	-5.80	116.30	120.52
2	A	535	FAD	C4X-C4-N3	-5.77	115.98	123.52
2	A	535	FAD	C4-C4X-C10	-5.59	116.36	119.94
2	A	535	FAD	N3-C2-N1	-4.39	120.30	127.69
4	A	602	NAG	O3-C3-C2	-2.66	103.69	109.37
4	A	603	NAG	C2-N2-C7	-2.46	119.91	123.11
2	A	535	FAD	C1'-C2'-C3'	-2.41	102.93	109.82
3	A	536	ZIP	C5-C4-N7	-2.22	107.18	111.12
2	A	535	FAD	C8M-C8-C9	-2.17	114.19	120.33
2	A	535	FAD	C6-C7-C8	-2.12	115.83	119.97
2	A	535	FAD	N3A-C2A-N1A	-2.05	127.26	128.87
3	A	536	ZIP	N10-C6-N1	2.02	121.96	119.06
7	A	538	GOL	C3-C2-C1	2.14	120.08	111.06
2	A	535	FAD	C4B-O4B-C1B	2.15	111.92	109.64
4	A	606	NAG	C4-C3-C2	2.21	114.77	111.34
2	A	535	FAD	C6-C5X-C9A	2.50	121.87	119.11
2	A	535	FAD	C9-C8-C7	2.91	125.66	119.97
2	A	535	FAD	O2P-P-O3P	2.93	117.83	105.27
2	A	535	FAD	C5X-C9A-N10	3.65	120.31	117.58
3	A	536	ZIP	C12-C11-N10	3.85	125.76	112.89
3	A	536	ZIP	C2-N1-C6	10.67	124.14	116.47
2	A	535	FAD	C4-N3-C2	11.24	124.54	115.16

There are no chirality outliers.

There are no torsion outliers.

There are no ring outliers.

8 monomers are involved in 16 short contacts:

Mol	Chain	Res	Type	Clashes	Symm-Clashes
2	A	535	FAD	2	0
3	A	536	ZIP	3	0
7	A	538	GOL	5	0
7	A	539	GOL	2	0
7	A	541	GOL	1	0
7	A	542	GOL	1	0
7	A	544	GOL	4	0
7	A	545	GOL	1	0

5.7 Other polymers

There are no such residues in this entry.

5.8 Polymer linkage issues

There are no chain breaks in this entry.

6 Fit of model and data ⓘ

6.1 Protein, DNA and RNA chains ⓘ

In the following table, the column labelled ‘#RSRZ> 2’ contains the number (and percentage) of RSRZ outliers, followed by percent RSRZ outliers for the chain as percentile scores relative to all X-ray entries and entries of similar resolution. The OWAB column contains the minimum, median, 95th percentile and maximum values of the occupancy-weighted average B-factor per residue. The column labelled ‘Q< 0.9’ lists the number of (and percentage) of residues with an average occupancy less than 0.9.

Mol	Chain	Analysed	<RSRZ>	#RSRZ>2		OWAB(Å ²)	Q<0.9
1	A	498/516 (96%)	-0.04	23 (4%)	36 38	13, 26, 47, 68	2 (0%)

All (23) RSRZ outliers are listed below:

Mol	Chain	Res	Type	RSRZ
1	A	129	ALA	9.3
1	A	464	PRO	8.4
1	A	128	ALA	8.3
1	A	279	ALA	7.7
1	A	274	PRO	7.1
1	A	127	ALA	5.1
1	A	462	VAL	4.0
1	A	388	LEU	3.8
1	A	389	GLY	3.4
1	A	217	LEU	3.3
1	A	344	ALA	3.1
1	A	390	LEU	3.0
1	A	216	GLN	2.9
1	A	273	ARG	2.8
1	A	280	SER	2.7
1	A	387	LYS	2.7
1	A	342	ALA	2.6
1	A	92	PRO	2.6
1	A	130	PRO	2.6
1	A	343	ALA	2.5
1	A	386	ASN	2.2
1	A	179	LEU	2.1
1	A	137	ALA	2.0

6.2 Non-standard residues in protein, DNA, RNA chains ⓘ

There are no non-standard protein/DNA/RNA residues in this entry.

6.3 Carbohydrates ⓘ

In the following table, the Atoms column lists the number of modelled atoms in the group and the number defined in the chemical component dictionary. LLDF column lists the quality of electron density of the group with respect to its neighbouring residues in protein, DNA or RNA chains. The B-factors column lists the minimum, median, 95th percentile and maximum values of B factors of atoms in the group. The column labelled 'Q< 0.9' lists the number of atoms with occupancy less than 0.9.

Mol	Type	Chain	Res	Atoms	RSCC	RSR	LLDF	B-factors(Å ²)	Q<0.9
5	NAG	A	605	14/15	0.86	0.32	-	66,70,73,73	0
5	NAG	A	604	14/15	0.88	0.17	-	43,47,50,50	0

6.4 Ligands ⓘ

In the following table, the Atoms column lists the number of modelled atoms in the group and the number defined in the chemical component dictionary. LLDF column lists the quality of electron density of the group with respect to its neighbouring residues in protein, DNA or RNA chains. The B-factors column lists the minimum, median, 95th percentile and maximum values of B factors of atoms in the group. The column labelled 'Q< 0.9' lists the number of atoms with occupancy less than 0.9.

Mol	Type	Chain	Res	Atoms	RSCC	RSR	LLDF	B-factors(Å ²)	Q<0.9
7	GOL	A	543	6/6	0.53	0.42	7.70	55,56,56,57	0
7	GOL	A	541	6/6	0.69	0.24	4.04	58,59,59,60	0
7	GOL	A	545	6/6	0.77	0.25	3.28	71,72,72,72	0
7	GOL	A	544	6/6	0.87	0.22	3.20	39,41,42,43	0
7	GOL	A	539	6/6	0.86	0.14	2.45	52,53,54,55	0
4	NAG	A	603	14/15	0.85	0.26	2.05	45,49,51,52	0
6	PEG	A	537	7/7	0.76	0.14	1.61	49,50,53,55	0
4	NAG	A	602	14/15	0.87	0.19	1.49	37,41,44,44	0
7	GOL	A	538	6/6	0.92	0.19	1.20	18,25,25,26	0
7	GOL	A	540	6/6	0.69	0.19	1.13	45,46,47,48	0
3	ZIP	A	536	15/15	0.90	0.13	0.02	27,29,30,31	0
2	FAD	A	535	53/53	0.98	0.13	-0.36	15,17,20,20	0
4	NAG	A	606	14/15	0.78	0.25	-	52,56,58,58	0
7	GOL	A	542	6/6	0.59	0.26	-	72,73,73,74	0

6.5 Other polymers

There are no such residues in this entry.