



Full wwPDB X-ray Structure Validation Report ⓘ

Jan 31, 2016 – 10:08 PM GMT

PDB ID : 1SA5
Title : Rat protein farnesyltransferase complexed with FPP and BMS-214662
Authors : Reid, T.S.; Beese, L.S.
Deposited on : 2004-02-06
Resolution : 2.60 Å(reported)

This is a Full wwPDB X-ray Structure Validation Report for a publicly released PDB entry.
We welcome your comments at validation@mail.wwpdb.org
A user guide is available at
<http://wwpdb.org/validation/2016/XrayValidationReportHelp>
with specific help available everywhere you see the ⓘ symbol.

The following versions of software and data (see [references ⓘ](#)) were used in the production of this report:

MolProbity : 4.02b-467
Mogul : 1.7 (RC4), CSD as536be (2015)
Xtriage (Phenix) : 1.9-1692
EDS : rb-20026688
Percentile statistics : 20151230.v01 (using entries in the PDB archive December 30th 2015)
Refmac : 5.8.0135
CCP4 : 6.5.0
Ideal geometry (proteins) : Engh & Huber (2001)
Ideal geometry (DNA, RNA) : Parkinson et al. (1996)
Validation Pipeline (wwPDB-VP) : trunk26865

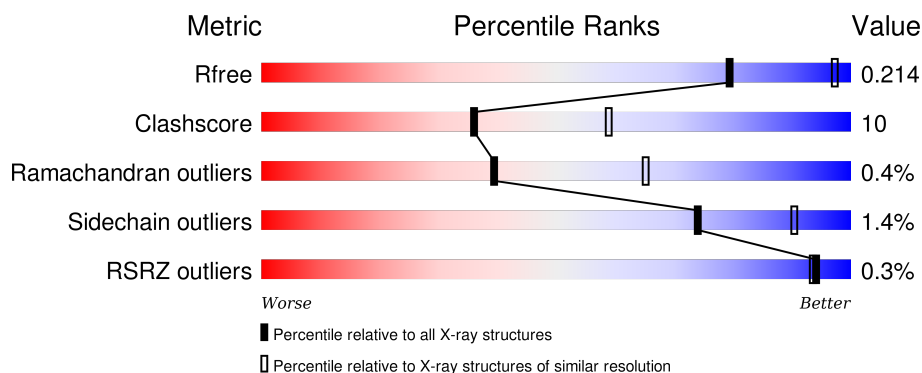
1 Overall quality at a glance

The following experimental techniques were used to determine the structure:

X-RAY DIFFRACTION



The reported resolution of this entry is 2.60 Å.

Percentile scores (ranging between 0-100) for global validation metrics of the entry are shown in the following graphic. The table shows the number of entries on which the scores are based.



Metric	Whole archive (#Entries)	Similar resolution (#Entries, resolution range(Å))
R_{free}	91344	2328 (2.60-2.60)
Clashscore	102246	2679 (2.60-2.60)
Ramachandran outliers	100387	2635 (2.60-2.60)
Sidechain outliers	100360	2635 (2.60-2.60)
RSRZ outliers	91569	2334 (2.60-2.60)

The table below summarises the geometric issues observed across the polymeric chains and their fit to the electron density. The red, orange, yellow and green segments on the lower bar indicate the fraction of residues that contain outliers for ≥ 3 , 2, 1 and 0 types of geometric quality criteria. A grey segment represents the fraction of residues that are not modelled. The numeric value for each fraction is indicated below the corresponding segment, with a dot representing fractions $\leq 5\%$. The upper red bar (where present) indicates the fraction of residues that have poor fit to the electron density. The numeric value is given above the bar.

Mol	Chain	Length	Quality of chain
1	A	377	 68% 16% 14%
2	B	437	 73% 20% 7%

The following table lists non-polymeric compounds, carbohydrate monomers and non-standard residues in protein, DNA, RNA chains that are outliers for geometric or electron-density-fit criteria:

Mol	Type	Chain	Res	Chirality	Geometry	Clashes	Electron density
4	FPP	B	439	-	-	-	X

2 Entry composition [i](#)

There are 7 unique types of molecules in this entry. The entry contains 6291 atoms, of which 0 are hydrogens and 0 are deuteriums.

In the tables below, the ZeroOcc column contains the number of atoms modelled with zero occupancy, the AltConf column contains the number of residues with at least one atom in alternate conformation and the Trace column contains the number of residues modelled with at most 2 atoms.

- Molecule 1 is a protein called Protein farnesyltransferase/geranylgeranyltransferase type I alpha subunit.

Mol	Chain	Residues	Atoms					ZeroOcc	AltConf	Trace
1	A	323	Total	C	N	O	S	0	0	0
			2745	1746	481	513	5			

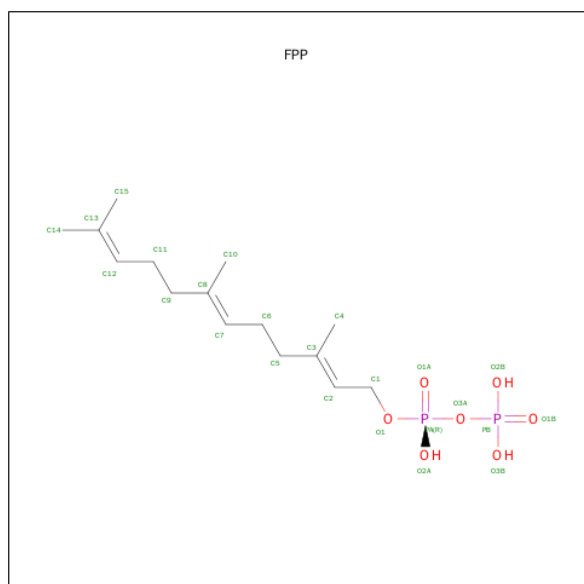
- Molecule 2 is a protein called Protein farnesyltransferase beta subunit.

Mol	Chain	Residues	Atoms					ZeroOcc	AltConf	Trace
2	B	407	Total	C	N	O	S	0	0	0
			3203	2050	550	580	23			

- Molecule 3 is ZINC ION (three-letter code: ZN) (formula: Zn).

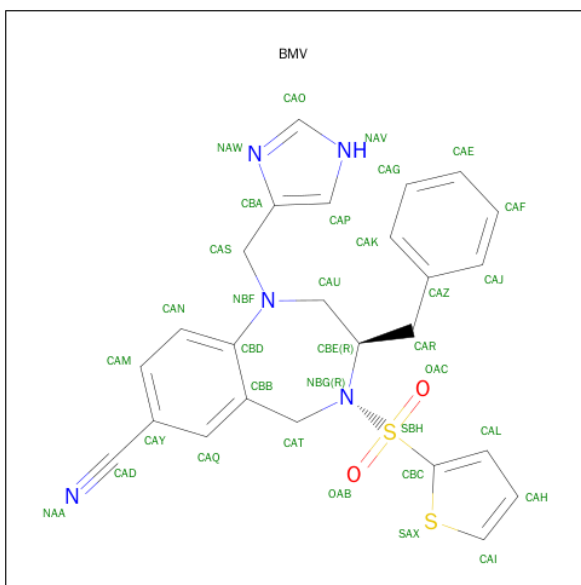
Mol	Chain	Residues	Atoms		ZeroOcc	AltConf
3	B	1	Total	Zn	0	0
			1	1		

- Molecule 4 is FARNESYL DIPHOSPHATE (three-letter code: FPP) (formula: C₁₅H₂₈O₇P₂).



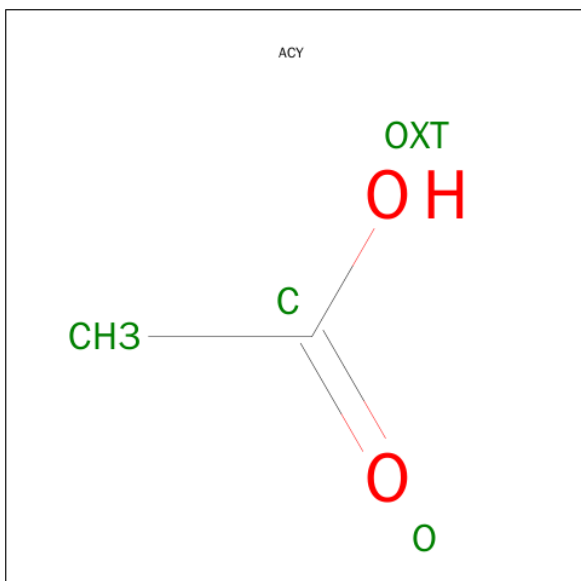
Mol	Chain	Residues	Atoms				ZeroOcc	AltConf
4	B	1	Total	C	O	P	0	0
			24	15	7	2		

- Molecule 5 is 3-BENZYL-1-(1H-IMIDAZOL-4-YLMETHYL)-4-(THIEN-2-YLSULFONYL)-2,3,4,5-TETRAHYDRO-1H-1,4-BENZODIAZEPINE-7-CARBONITRILE (three-letter code: BMV) (formula: $C_{25}H_{23}N_5O_2S_2$).



Mol	Chain	Residues	Atoms					ZeroOcc	AltConf
5	B	1	Total	C	N	O	S	0	0
			34	25	5	2	2		

- Molecule 6 is ACETIC ACID (three-letter code: ACY) (formula: $C_2H_4O_2$).



Mol	Chain	Residues	Atoms			ZeroOcc	AltConf
6	B	1	Total	C	O	0	0
			4	2	2		

- Molecule 7 is water.

Mol	Chain	Residues	Atoms		ZeroOcc	AltConf
7	A	147	Total	O	0	0
			147	147		
7	B	133	Total	O	0	0
			133	133		

4 Data and refinement statistics

Property	Value	Source
Space group	P 61	Depositor
Cell constants a, b, c, α , β , γ	170.47 Å 170.47 Å 69.03 Å 90.00° 90.00° 120.00°	Depositor
Resolution (Å)	49.21 – 2.60 49.21 – 2.60	Depositor EDS
% Data completeness (in resolution range)	98.7 (49.21-2.60) 98.7 (49.21-2.60)	Depositor EDS
R_{merge}	(Not available)	Depositor
R_{sym}	0.11	Depositor
$\langle I/\sigma(I) \rangle$ ¹	3.92 (at 2.61 Å)	Xtriage
Refinement program	CNS 1.0	Depositor
R, R_{free}	0.188 , 0.225 0.197 , 0.214	Depositor DCC
R_{free} test set	1844 reflections (5.26%)	DCC
Wilson B-factor (Å ²)	24.0	Xtriage
Anisotropy	0.202	Xtriage
Bulk solvent k_{sol} (e/Å ³), B_{sol} (Å ²)	0.37 , 31.4	EDS
Estimated twinning fraction	0.064 for h,-h-k,-l	Xtriage
L-test for twinning ²	$\langle L \rangle = 0.43$, $\langle L^2 \rangle = 0.26$	Xtriage
Outliers	0 of 35094 reflections	Xtriage
F_o, F_c correlation	0.93	EDS
Total number of atoms	6291	wwPDB-VP
Average B, all atoms (Å ²)	33.0	wwPDB-VP

Xtriage's analysis on translational NCS is as follows: *The largest off-origin peak in the Patterson function is 3.34% of the height of the origin peak. No significant pseudotranslation is detected.*

¹Intensities estimated from amplitudes.

²Theoretical values of $\langle |L| \rangle$, $\langle L^2 \rangle$ for acentric reflections are 0.5, 0.375 respectively for untwinned datasets, and 0.333, 0.2 for perfectly twinned datasets.

5 Model quality [i](#)

5.1 Standard geometry [i](#)

Bond lengths and bond angles in the following residue types are not validated in this section: ACY, BMV, ZN, FPP

The Z score for a bond length (or angle) is the number of standard deviations the observed value is removed from the expected value. A bond length (or angle) with $|Z| > 5$ is considered an outlier worth inspection. RMSZ is the root-mean-square of all Z scores of the bond lengths (or angles).

Mol	Chain	Bond lengths		Bond angles	
		RMSZ	# Z >5	RMSZ	# Z >5
1	A	0.34	0/2812	0.55	0/3817
2	B	0.36	0/3292	0.59	1/4473 (0.0%)
All	All	0.35	0/6104	0.57	1/8290 (0.0%)

There are no bond length outliers.

All (1) bond angle outliers are listed below:

Mol	Chain	Res	Type	Atoms	Z	Observed(°)	Ideal(°)
2	B	308	LEU	CA-CB-CG	-6.20	101.04	115.30

There are no chirality outliers.

There are no planarity outliers.

5.2 Too-close contacts [i](#)

In the following table, the Non-H and H(model) columns list the number of non-hydrogen atoms and hydrogen atoms in the chain respectively. The H(added) column lists the number of hydrogen atoms added and optimized by MolProbity. The Clashes column lists the number of clashes within the asymmetric unit, whereas Symm-Clashes lists symmetry related clashes.

Mol	Chain	Non-H	H(model)	H(added)	Clashes	Symm-Clashes
1	A	2745	0	2666	48	0
2	B	3203	0	3130	67	0
3	B	1	0	0	0	0
4	B	24	0	25	3	0
5	B	34	0	22	1	0
6	B	4	0	3	0	0
7	A	147	0	0	4	0
7	B	133	0	0	4	0

Continued on next page...

Continued from previous page...

Mol	Chain	Non-H	H(model)	H(added)	Clashes	Symm-Clashes
All	All	6291	0	5846	114	0

The all-atom clashscore is defined as the number of clashes found per 1000 atoms (including hydrogen atoms). The all-atom clashscore for this structure is 10.

All (114) close contacts within the same asymmetric unit are listed below, sorted by their clash magnitude.

Atom-1	Atom-2	Interatomic distance (Å)	Clash overlap (Å)
2:B:325:MET:SD	2:B:381:MET:HG3	2.24	0.78
2:B:414:HIS:O	2:B:417:GLN:HG2	1.87	0.74
2:B:192:LEU:HD23	2:B:199:VAL:HG23	1.70	0.73
1:A:77:PRO:HG3	1:A:102:TYR:CZ	2.25	0.71
2:B:308:LEU:HD13	2:B:330:PHE:HB3	1.74	0.69
1:A:374:PRO:HB2	1:A:377:VAL:HG23	1.74	0.68
2:B:380:ALA:HB3	2:B:381:MET:HE3	1.76	0.68
2:B:192:LEU:HD23	2:B:199:VAL:CG2	2.25	0.67
2:B:239:ILE:HB	2:B:252:THR:HA	1.79	0.65
1:A:294:ASN:O	1:A:298:GLN:HG3	1.97	0.65
2:B:308:LEU:CD1	2:B:330:PHE:HB3	2.28	0.64
1:A:357:ARG:HG3	1:A:357:ARG:HH11	1.62	0.63
2:B:86:LEU:HD21	2:B:122:VAL:HG11	1.79	0.63
2:B:68:VAL:HG13	7:B:496:HOH:O	1.98	0.63
1:A:370:GLU:HA	1:A:373:ILE:HD12	1.81	0.62
2:B:297:ASP:HB3	2:B:300:TYR:CD1	2.36	0.61
2:B:73:LEU:HD12	2:B:344:GLN:OE1	2.04	0.57
1:A:252:ASP:OD2	1:A:255:VAL:HG23	2.03	0.57
1:A:102:TYR:O	1:A:106:VAL:HG22	2.03	0.57
1:A:152:MET:O	1:A:156:ILE:HG23	2.05	0.57
1:A:156:ILE:HG22	1:A:172:ARG:HH12	1.69	0.57
1:A:97:ARG:HD3	7:A:489:HOH:O	2.04	0.56
2:B:121:ILE:O	2:B:124:THR:HG22	2.06	0.55
2:B:48:GLN:O	2:B:52:GLU:HG3	2.06	0.55
2:B:301:SER:O	2:B:305:ALA:HB3	2.08	0.54
2:B:201:VAL:HG11	2:B:251:TYR:HB3	1.89	0.54
2:B:149:HIS:ND1	2:B:152:PRO:HD2	2.24	0.53
2:B:370:LEU:O	2:B:374:GLN:HG3	2.09	0.52
1:A:311:LEU:HD23	1:A:311:LEU:O	2.08	0.52
2:B:17:PRO:HB3	2:B:19:TRP:NE1	2.25	0.52
2:B:27:ARG:HB3	2:B:29:GLU:OE1	2.10	0.52
2:B:306:GLY:O	2:B:309:PRO:HD2	2.11	0.51
1:A:148:LEU:HB2	1:A:179:LEU:HD21	1.92	0.51

Continued on next page...

Continued from previous page...

Atom-1	Atom-2	Interatomic distance (Å)	Clash overlap (Å)
1:A:152:MET:O	1:A:156:ILE:CG2	2.60	0.50
2:B:30:HIS:HE1	7:B:479:HOH:O	1.94	0.49
2:B:335:LEU:HD23	2:B:373:ALA:HB2	1.94	0.49
2:B:202:ARG:HD2	4:B:439:FPP:H142	1.95	0.49
2:B:38:ASP:O	2:B:40:VAL:HG23	2.13	0.49
1:A:342:GLU:HA	1:A:342:GLU:OE1	2.13	0.49
2:B:143:GLY:HA3	2:B:146:GLN:NE2	2.28	0.48
1:A:263:THR:HG21	1:A:280:LEU:HB2	1.95	0.48
1:A:312:ILE:HB	1:A:344:LEU:HD21	1.95	0.48
2:B:423:PHE:N	2:B:423:PHE:CD2	2.81	0.48
2:B:98:ALA:O	2:B:142:GLY:HA3	2.14	0.48
7:A:462:HOH:O	4:B:439:FPP:H12A	2.13	0.48
1:A:357:ARG:NH1	1:A:357:ARG:HG3	2.29	0.47
1:A:311:LEU:HD23	1:A:311:LEU:C	2.34	0.47
2:B:420:VAL:O	2:B:421:PRO:C	2.52	0.47
1:A:291:ARG:HB2	7:A:488:HOH:O	2.14	0.47
2:B:86:LEU:HB2	2:B:107:ILE:HG21	1.98	0.46
2:B:162:ILE:O	2:B:407:LYS:HE2	2.15	0.46
2:B:100:ARG:HD3	7:B:467:HOH:O	2.15	0.46
2:B:381:MET:O	2:B:382:LEU:HD23	2.15	0.46
1:A:182:PRO:HG3	1:A:213:PHE:CD2	2.50	0.45
1:A:96:PHE:HA	1:A:126:LEU:HD13	1.97	0.45
2:B:306:GLY:C	2:B:309:PRO:HD2	2.37	0.45
2:B:257:ALA:O	2:B:261:ILE:HG13	2.17	0.45
1:A:241:HIS:HA	1:A:250:TYR:OH	2.16	0.45
1:A:219:GLU:OE1	1:A:219:GLU:HA	2.17	0.45
1:A:103:PHE:O	1:A:106:VAL:HG23	2.16	0.45
2:B:62:TYR:CD2	2:B:69:PRO:HA	2.51	0.45
1:A:97:ARG:HG3	1:A:97:ARG:HH11	1.82	0.45
1:A:58:LEU:HB2	7:A:483:HOH:O	2.16	0.45
2:B:253:PHE:HA	2:B:307:LEU:HD21	1.98	0.45
1:A:303:GLN:N	1:A:304:PRO:CD	2.79	0.45
2:B:62:TYR:CG	2:B:69:PRO:HG3	2.52	0.45
2:B:276:TRP:O	2:B:280:ARG:HG2	2.17	0.45
1:A:77:PRO:HG3	1:A:102:TYR:CE1	2.51	0.45
1:A:173:ARG:O	1:A:177:GLU:HG3	2.16	0.44
1:A:355:TYR:O	1:A:358:TYR:HB3	2.18	0.44
1:A:231:VAL:HG22	1:A:231:VAL:O	2.16	0.44
2:B:380:ALA:HB3	2:B:381:MET:CE	2.46	0.44
2:B:75:ARG:NH2	2:B:393:VAL:O	2.51	0.44
2:B:151:ALA:HB3	2:B:152:PRO:CD	2.48	0.44

Continued on next page...

Continued from previous page...

Atom-1	Atom-2	Interatomic distance (Å)	Clash overlap (Å)
2:B:336:GLN:HG2	2:B:370:LEU:HD12	1.98	0.44
2:B:422:GLY:O	2:B:423:PHE:HB2	2.17	0.44
2:B:328:TRP:CZ2	2:B:376:PHE:HA	2.53	0.44
1:A:66:TYR:CE2	1:A:119:LEU:HD13	2.53	0.44
1:A:87:VAL:O	1:A:88:VAL:C	2.56	0.43
1:A:223:VAL:HG13	1:A:236:VAL:CG1	2.48	0.43
2:B:361:TYR:CE2	5:B:440:BMV:HAP	2.53	0.43
2:B:174:ARG:HD2	2:B:415:PHE:CE2	2.53	0.43
2:B:336:GLN:HG2	2:B:370:LEU:CD1	2.48	0.43
1:A:265:GLU:O	1:A:269:LEU:HD13	2.18	0.43
2:B:308:LEU:HD13	2:B:330:PHE:HD2	1.83	0.43
1:A:281:LYS:HE3	2:B:275:GLN:OE1	2.19	0.43
2:B:308:LEU:HD13	2:B:330:PHE:CD2	2.54	0.43
1:A:374:PRO:HD2	1:A:377:VAL:HG21	2.00	0.43
1:A:185:GLU:O	1:A:189:ILE:HG13	2.19	0.43
2:B:149:HIS:HB3	2:B:152:PRO:CG	2.50	0.42
2:B:390:PRO:HG2	2:B:391:GLU:OE2	2.19	0.42
2:B:127:CYS:O	2:B:131:GLU:HG3	2.18	0.42
1:A:208:TRP:NE1	1:A:212:GLU:HG3	2.33	0.42
1:A:347:GLU:OE2	1:A:348:LYS:HE3	2.19	0.42
2:B:398:HIS:CE1	2:B:400:VAL:HB	2.55	0.42
2:B:70:ARG:HA	7:B:513:HOH:O	2.19	0.42
2:B:174:ARG:HD2	2:B:415:PHE:CD2	2.55	0.42
2:B:248:HIS:CE1	4:B:439:FPP:H51	2.55	0.42
2:B:281:GLN:HB2	2:B:288:PHE:CE2	2.54	0.42
2:B:62:TYR:CB	2:B:69:PRO:HG3	2.49	0.42
2:B:300:TYR:C	2:B:302:PHE:N	2.73	0.42
1:A:96:PHE:CE1	2:B:94:GLU:HB3	2.55	0.42
1:A:227:LEU:HG	1:A:236:VAL:CG1	2.50	0.41
1:A:227:LEU:HG	1:A:236:VAL:HG11	2.01	0.41
2:B:78:HIS:ND1	2:B:349:GLY:N	2.63	0.41
2:B:68:VAL:HA	2:B:69:PRO:HD3	1.94	0.41
2:B:423:PHE:N	2:B:423:PHE:HD2	2.18	0.41
2:B:201:VAL:HG12	2:B:251:TYR:CD2	2.56	0.41
1:A:303:GLN:O	1:A:307:SER:HB2	2.21	0.41
2:B:259:LEU:HD12	2:B:268:LEU:HD11	2.03	0.41
1:A:112:ARG:HA	1:A:140:LEU:CD2	2.51	0.41
1:A:334:LEU:CD2	1:A:338:LEU:HG	2.51	0.41
1:A:142:ARG:HH21	1:A:142:ARG:HG3	1.85	0.41
1:A:55:PHE:N	1:A:55:PHE:CD1	2.88	0.40

There are no symmetry-related clashes.

5.3 Torsion angles

5.3.1 Protein backbone

In the following table, the Percentiles column shows the percent Ramachandran outliers of the chain as a percentile score with respect to all X-ray entries followed by that with respect to entries of similar resolution.

The Analysed column shows the number of residues for which the backbone conformation was analysed, and the total number of residues.

Mol	Chain	Analysed	Favoured	Allowed	Outliers	Percentiles	
1	A	321/377 (85%)	298 (93%)	21 (6%)	2 (1%)	30	56
2	B	405/437 (93%)	390 (96%)	14 (4%)	1 (0%)	52	77
All	All	726/814 (89%)	688 (95%)	35 (5%)	3 (0%)	39	65

All (3) Ramachandran outliers are listed below:

Mol	Chain	Res	Type
1	A	217	ASP
2	B	421	PRO
1	A	326	GLN

5.3.2 Protein sidechains

In the following table, the Percentiles column shows the percent sidechain outliers of the chain as a percentile score with respect to all X-ray entries followed by that with respect to entries of similar resolution.

The Analysed column shows the number of residues for which the sidechain conformation was analysed, and the total number of residues.

Mol	Chain	Analysed	Rotameric	Outliers	Percentiles	
1	A	301/338 (89%)	295 (98%)	6 (2%)	63	85
2	B	344/371 (93%)	341 (99%)	3 (1%)	84	95
All	All	645/709 (91%)	636 (99%)	9 (1%)	74	90

All (9) residues with a non-rotameric sidechain are listed below:

Mol	Chain	Res	Type
1	A	55	PHE
1	A	106	VAL
1	A	156	ILE

Continued on next page...

Continued from previous page...

Mol	Chain	Res	Type
1	A	257	GLU
1	A	326	GLN
1	A	334	LEU
2	B	68	VAL
2	B	351	LEU
2	B	421	PRO

Some sidechains can be flipped to improve hydrogen bonding and reduce clashes. All (6) such sidechains are listed below:

Mol	Chain	Res	Type
1	A	278	ASN
2	B	170	ASN
2	B	293	ASN
2	B	383	HIS
2	B	410	GLN
2	B	417	GLN

5.3.3 RNA [i](#)

There are no RNA molecules in this entry.

5.4 Non-standard residues in protein, DNA, RNA chains [i](#)

There are no non-standard protein/DNA/RNA residues in this entry.

5.5 Carbohydrates [i](#)

There are no carbohydrates in this entry.

5.6 Ligand geometry [i](#)

Of 4 ligands modelled in this entry, 1 is monoatomic - leaving 3 for Mogul analysis.

In the following table, the Counts columns list the number of bonds (or angles) for which Mogul statistics could be retrieved, the number of bonds (or angles) that are observed in the model and the number of bonds (or angles) that are defined in the chemical component dictionary. The Link column lists molecule types, if any, to which the group is linked. The Z score for a bond length (or angle) is the number of standard deviations the observed value is removed from the expected value. A bond length (or angle) with $|Z| > 2$ is considered an outlier worth inspection. RMSZ is the root-mean-square of all Z scores of the bond lengths (or angles).

Mol	Type	Chain	Res	Link	Bond lengths			Bond angles		
					Counts	RMSZ	# Z > 2	Counts	RMSZ	# Z > 2
4	FPP	B	439	-	21,23,23	0.77	1 (4%)	27,31,31	0.81	0
5	BMV	B	440	3	31,38,38	1.78	3 (9%)	34,54,54	2.18	7 (20%)
6	ACY	B	441	-	1,3,3	2.51	1 (100%)	0,3,3	0.00	-

In the following table, the Chirals column lists the number of chiral outliers, the number of chiral centers analysed, the number of these observed in the model and the number defined in the chemical component dictionary. Similar counts are reported in the Torsion and Rings columns. '-' means no outliers of that kind were identified.

Mol	Type	Chain	Res	Link	Chirals	Torsions	Rings
4	FPP	B	439	-	-	0/25/25/25	0/0/0/0
5	BMV	B	440	3	-	0/16/38/38	0/4/5/5
6	ACY	B	441	-	-	0/0/0/0	0/0/0/0

All (5) bond length outliers are listed below:

Mol	Chain	Res	Type	Atoms	Z	Observed(Å)	Ideal(Å)
5	B	440	BMV	CBD-NBF	-5.24	1.33	1.43
4	B	439	FPP	C2-C3	2.23	1.37	1.33
6	B	441	ACY	CH3-C	2.51	1.52	1.48
5	B	440	BMV	OAB-SBH	5.39	1.50	1.43
5	B	440	BMV	OAC-SBH	5.46	1.50	1.43

All (7) bond angle outliers are listed below:

Mol	Chain	Res	Type	Atoms	Z	Observed(°)	Ideal(°)
5	B	440	BMV	OAC-SBH-OAB	-6.82	107.71	119.47
5	B	440	BMV	CAH-CAI-SAX	-5.66	106.96	113.23
5	B	440	BMV	CAT-CBB-CAQ	-5.44	112.03	119.28
5	B	440	BMV	CAR-CBE-NBG	-4.18	106.62	112.87
5	B	440	BMV	CAN-CBD-NBF	-2.08	114.65	118.23
5	B	440	BMV	CAQ-CBB-CBD	2.54	121.00	118.93
5	B	440	BMV	CAT-CBB-CBD	2.91	126.96	122.44

There are no chirality outliers.

There are no torsion outliers.

There are no ring outliers.

2 monomers are involved in 4 short contacts:

Mol	Chain	Res	Type	Clashes	Symm-Clashes
4	B	439	FPP	3	0
5	B	440	BMV	1	0

5.7 Other polymers [i](#)

There are no such residues in this entry.

5.8 Polymer linkage issues [i](#)

There are no chain breaks in this entry.

6 Fit of model and data [i](#)

6.1 Protein, DNA and RNA chains [i](#)

In the following table, the column labelled ‘#RSRZ> 2’ contains the number (and percentage) of RSRZ outliers, followed by percent RSRZ outliers for the chain as percentile scores relative to all X-ray entries and entries of similar resolution. The OWAB column contains the minimum, median, 95th percentile and maximum values of the occupancy-weighted average B-factor per residue. The column labelled ‘Q< 0.9’ lists the number of (and percentage) of residues with an average occupancy less than 0.9.

Mol	Chain	Analysed	<RSRZ>	#RSRZ>2	OWAB(Å ²)	Q<0.9
1	A	323/377 (85%)	-0.27	1 (0%) 94 93	14, 33, 67, 85	0
2	B	407/437 (93%)	-0.36	1 (0%) 95 95	16, 29, 52, 78	0
All	All	730/814 (89%)	-0.32	2 (0%) 94 93	14, 31, 58, 85	0

All (2) RSRZ outliers are listed below:

Mol	Chain	Res	Type	RSRZ
1	A	375	ALA	4.0
2	B	64	PHE	2.3

6.2 Non-standard residues in protein, DNA, RNA chains [i](#)

There are no non-standard protein/DNA/RNA residues in this entry.

6.3 Carbohydrates [i](#)

There are no carbohydrates in this entry.

6.4 Ligands [i](#)

In the following table, the Atoms column lists the number of modelled atoms in the group and the number defined in the chemical component dictionary. LLDF column lists the quality of electron density of the group with respect to its neighbouring residues in protein, DNA or RNA chains. The B-factors column lists the minimum, median, 95th percentile and maximum values of B factors of atoms in the group. The column labelled ‘Q< 0.9’ lists the number of atoms with occupancy less than 0.9.

Mol	Type	Chain	Res	Atoms	RSCC	RSR	LLDF	B-factors(Å ²)	Q<0.9
4	FPP	B	439	24/24	0.97	0.20	6.02	13,35,41,43	0

Continued on next page...

Continued from previous page...

Mol	Type	Chain	Res	Atoms	RSCC	RSR	LLDF	B-factors(\AA^2)	Q<0.9
6	ACY	B	441	4/4	0.99	0.16	0.17	25,26,27,28	0
5	BMV	B	440	34/34	0.97	0.14	0.15	16,24,41,42	0
3	ZN	B	438	1/1	1.00	0.15	-	22,22,22,22	0

6.5 Other polymers [i](#)

There are no such residues in this entry.