



Full wwPDB X-ray Structure Validation Report ⓘ

Feb 1, 2016 – 12:57 PM GMT

PDB ID : 3SAJ
Title : Crystal Structure of glutamate receptor GluA1 Amino Terminal Domain
Authors : Jin, R.; Zong, Y.; Yao, G.; Gu, S.
Deposited on : 2011-06-02
Resolution : 2.50 Å(reported)

This is a Full wwPDB X-ray Structure Validation Report for a publicly released PDB entry.
We welcome your comments at validation@mail.wwpdb.org
A user guide is available at
<http://wwpdb.org/validation/2016/XrayValidationReportHelp>
with specific help available everywhere you see the ⓘ symbol.

The following versions of software and data (see [references ⓘ](#)) were used in the production of this report:

MolProbity : 4.02b-467
Mogul : 1.7 (RC4), CSD as536be (2015)
Xtriage (Phenix) : 1.9-1692
EDS : rb-20026688
Percentile statistics : 20151230.v01 (using entries in the PDB archive December 30th 2015)
Refmac : 5.8.0135
CCP4 : 6.5.0
Ideal geometry (proteins) : Engh & Huber (2001)
Ideal geometry (DNA, RNA) : Parkinson et al. (1996)
Validation Pipeline (wwPDB-VP) : trunk26865

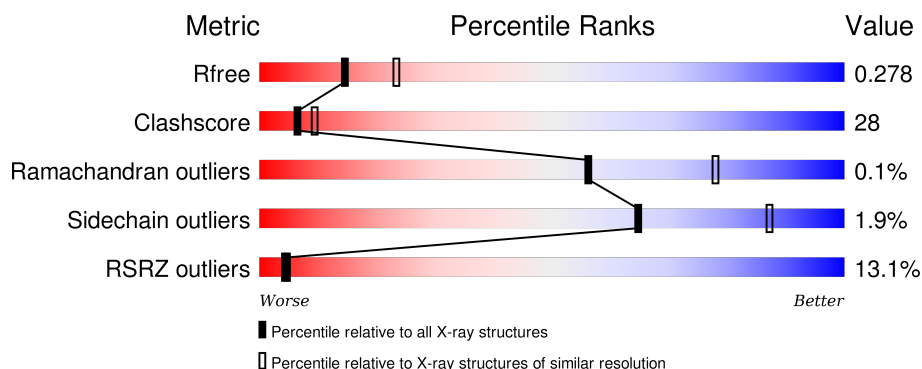
1 Overall quality at a glance

The following experimental techniques were used to determine the structure:

X-RAY DIFFRACTION

The reported resolution of this entry is 2.50 Å.

Percentile scores (ranging between 0-100) for global validation metrics of the entry are shown in the following graphic. The table shows the number of entries on which the scores are based.



Metric	Whole archive (#Entries)	Similar resolution (#Entries, resolution range(Å))
R_{free}	91344	3553 (2.50-2.50)
Clashscore	102246	4242 (2.50-2.50)
Ramachandran outliers	100387	4156 (2.50-2.50)
Sidechain outliers	100360	4158 (2.50-2.50)
RSRZ outliers	91569	3562 (2.50-2.50)

The table below summarises the geometric issues observed across the polymeric chains and their fit to the electron density. The red, orange, yellow and green segments on the lower bar indicate the fraction of residues that contain outliers for ≥ 3 , 2, 1 and 0 types of geometric quality criteria. A grey segment represents the fraction of residues that are not modelled. The numeric value for each fraction is indicated below the corresponding segment, with a dot representing fractions $\leq 5\%$. The upper red bar (where present) indicates the fraction of residues that have poor fit to the electron density. The numeric value is given above the bar.

Mol	Chain	Length	Quality of chain
1	A	384	<div> <div>11%</div> <div>65%</div> <div>30%</div> <div>• •</div> </div>
1	B	384	<div> <div>12%</div> <div>61%</div> <div>33%</div> <div>• 5%</div> </div>
1	C	384	<div> <div>15%</div> <div>58%</div> <div>37%</div> <div>• •</div> </div>
1	D	384	<div> <div>12%</div> <div>61%</div> <div>32%</div> <div>• •</div> </div>

The following table lists non-polymeric compounds, carbohydrate monomers and non-standard residues in protein, DNA, RNA chains that are outliers for geometric or electron-density-fit crite-

ria:

Mol	Type	Chain	Res	Chirality	Geometry	Clashes	Electron density
3	NAG	C	600	-	-	-	X
4	NAG	A	900	-	-	-	X
4	NAG	D	900	-	-	-	X
5	NAG	C	800	-	-	-	X
5	MAN	C	805	-	-	-	X

2 Entry composition

There are 6 unique types of molecules in this entry. The entry contains 12534 atoms, of which 0 are hydrogens and 0 are deuteriums.

In the tables below, the ZeroOcc column contains the number of atoms modelled with zero occupancy, the AltConf column contains the number of residues with at least one atom in alternate conformation and the Trace column contains the number of residues modelled with at most 2 atoms.

- Molecule 1 is a protein called Glutamate receptor 1.

Mol	Chain	Residues	Atoms					ZeroOcc	AltConf	Trace
1	A	369	Total	C	N	O	S	0	1	0
			2987	1899	525	550	13			
1	B	366	Total	C	N	O	S	0	0	0
			2959	1882	518	546	13			
1	C	372	Total	C	N	O	S	0	0	0
			3016	1918	530	555	13			
1	D	367	Total	C	N	O	S	0	0	0
			2963	1884	519	547	13			

There are 52 discrepancies between the modelled and reference sequences:

Chain	Residue	Modelled	Actual	Comment	Reference
A	-3	ILE	-	EXPRESSION TAG	UNP P19490
A	-2	GLU	-	EXPRESSION TAG	UNP P19490
A	-1	GLU	-	EXPRESSION TAG	UNP P19490
A	0	ARG	-	EXPRESSION TAG	UNP P19490
A	1	GLY	-	EXPRESSION TAG	UNP P19490
A	2	ALA	-	EXPRESSION TAG	UNP P19490
A	3	MET	-	EXPRESSION TAG	UNP P19490
A	375	LEU	-	EXPRESSION TAG	UNP P19490
A	376	GLU	-	EXPRESSION TAG	UNP P19490
A	377	VAL	-	EXPRESSION TAG	UNP P19490
A	378	LEU	-	EXPRESSION TAG	UNP P19490
A	379	PHE	-	EXPRESSION TAG	UNP P19490
A	380	GLN	-	EXPRESSION TAG	UNP P19490
B	-3	ILE	-	EXPRESSION TAG	UNP P19490
B	-2	GLU	-	EXPRESSION TAG	UNP P19490
B	-1	GLU	-	EXPRESSION TAG	UNP P19490
B	0	ARG	-	EXPRESSION TAG	UNP P19490
B	1	GLY	-	EXPRESSION TAG	UNP P19490
B	2	ALA	-	EXPRESSION TAG	UNP P19490
B	3	MET	-	EXPRESSION TAG	UNP P19490
B	375	LEU	-	EXPRESSION TAG	UNP P19490

Continued on next page...

Continued from previous page...

Chain	Residue	Modelled	Actual	Comment	Reference
B	376	GLU	-	EXPRESSION TAG	UNP P19490
B	377	VAL	-	EXPRESSION TAG	UNP P19490
B	378	LEU	-	EXPRESSION TAG	UNP P19490
B	379	PHE	-	EXPRESSION TAG	UNP P19490
B	380	GLN	-	EXPRESSION TAG	UNP P19490
C	-3	ILE	-	EXPRESSION TAG	UNP P19490
C	-2	GLU	-	EXPRESSION TAG	UNP P19490
C	-1	GLU	-	EXPRESSION TAG	UNP P19490
C	0	ARG	-	EXPRESSION TAG	UNP P19490
C	1	GLY	-	EXPRESSION TAG	UNP P19490
C	2	ALA	-	EXPRESSION TAG	UNP P19490
C	3	MET	-	EXPRESSION TAG	UNP P19490
C	375	LEU	-	EXPRESSION TAG	UNP P19490
C	376	GLU	-	EXPRESSION TAG	UNP P19490
C	377	VAL	-	EXPRESSION TAG	UNP P19490
C	378	LEU	-	EXPRESSION TAG	UNP P19490
C	379	PHE	-	EXPRESSION TAG	UNP P19490
C	380	GLN	-	EXPRESSION TAG	UNP P19490
D	-3	ILE	-	EXPRESSION TAG	UNP P19490
D	-2	GLU	-	EXPRESSION TAG	UNP P19490
D	-1	GLU	-	EXPRESSION TAG	UNP P19490
D	0	ARG	-	EXPRESSION TAG	UNP P19490
D	1	GLY	-	EXPRESSION TAG	UNP P19490
D	2	ALA	-	EXPRESSION TAG	UNP P19490
D	3	MET	-	EXPRESSION TAG	UNP P19490
D	375	LEU	-	EXPRESSION TAG	UNP P19490
D	376	GLU	-	EXPRESSION TAG	UNP P19490
D	377	VAL	-	EXPRESSION TAG	UNP P19490
D	378	LEU	-	EXPRESSION TAG	UNP P19490
D	379	PHE	-	EXPRESSION TAG	UNP P19490
D	380	GLN	-	EXPRESSION TAG	UNP P19490

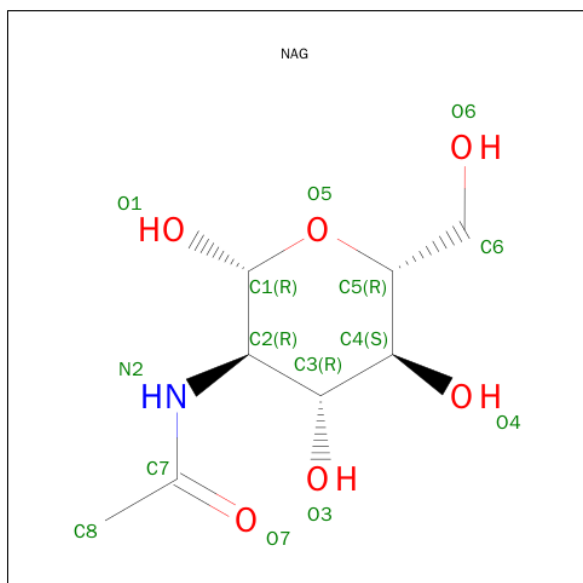
- Molecule 2 is a polymer of unknown type called SUGAR (3-MER).

Mol	Chain	Residues	Atoms				ZeroOcc	AltConf
2	A	3	Total	C	N	O	0	0
			39	22	2	15		
2	B	3	Total	C	N	O	0	0
			39	22	2	15		
2	D	3	Total	C	N	O	0	0
			39	22	2	15		

- Molecule 3 is a polymer of unknown type called SUGAR (2-MER).

Mol	Chain	Residues	Atoms				ZeroOcc	AltConf
3	A	2	Total	C	N	O	0	0
			28	16	2	10		
3	A	2	Total	C	N	O	0	0
			28	16	2	10		
3	B	2	Total	C	N	O	0	0
			28	16	2	10		
3	B	2	Total	C	N	O	0	0
			28	16	2	10		
3	C	2	Total	C	N	O	0	0
			28	16	2	10		
3	C	2	Total	C	N	O	0	0
			28	16	2	10		
3	D	2	Total	C	N	O	0	0
			28	16	2	10		
3	D	2	Total	C	N	O	0	0
			28	16	2	10		

- Molecule 4 is SUGAR (N-ACETYL-D-GLUCOSAMINE) (three-letter code: NAG) (formula: $C_8H_{15}NO_6$).



Mol	Chain	Residues	Atoms				ZeroOcc	AltConf
4	A	1	Total	C	N	O	0	0
			14	8	1	5		
4	B	1	Total	C	N	O	0	0
			14	8	1	5		

Continued on next page...

Continued from previous page...

Mol	Chain	Residues	Atoms				ZeroOcc	AltConf
4	D	1	Total	C	N	O	0	0
			14	8	1	5		

- Molecule 5 is a polymer of unknown type called SUGAR (7-MER).

Mol	Chain	Residues	Atoms				ZeroOcc	AltConf
5	C	7	Total	C	N	O	0	0
			83	46	2	35		

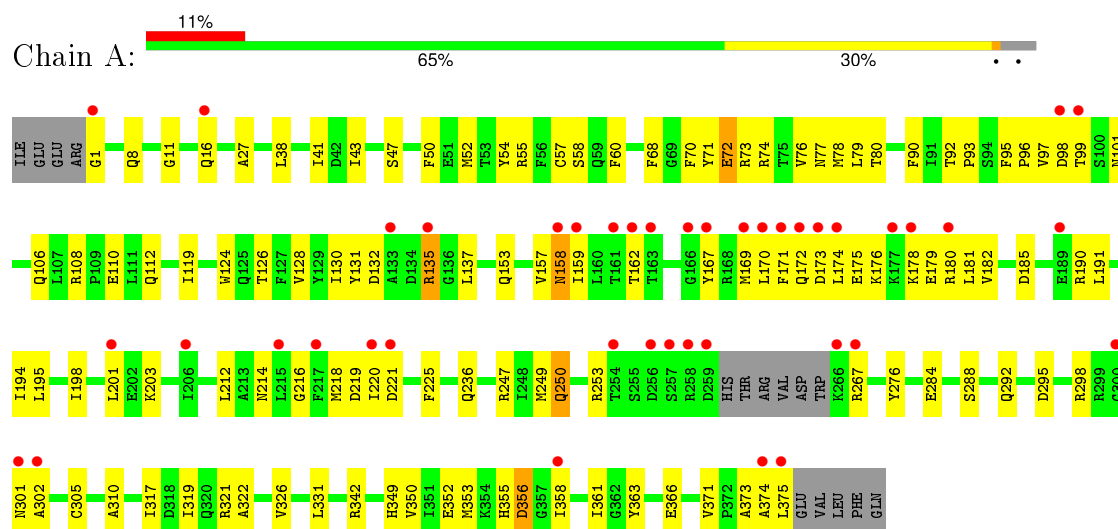
- Molecule 6 is water.

Mol	Chain	Residues	Atoms		ZeroOcc	AltConf
6	A	49	Total	O	0	0
			49	49		
6	B	29	Total	O	0	0
			29	29		
6	C	41	Total	O	0	0
			41	41		
6	D	24	Total	O	0	0
			24	24		

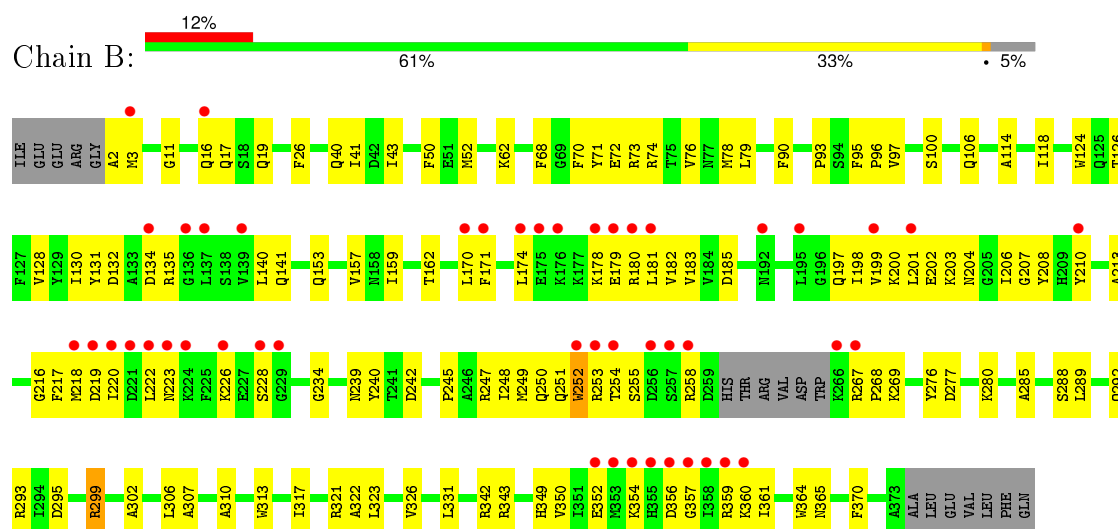
3 Residue-property plots

These plots are drawn for all protein, RNA and DNA chains in the entry. The first graphic for a chain summarises the proportions of errors displayed in the second graphic. The second graphic shows the sequence view annotated by issues in geometry and electron density. Residues are color-coded according to the number of geometric quality criteria for which they contain at least one outlier: green = 0, yellow = 1, orange = 2 and red = 3 or more. A red dot above a residue indicates a poor fit to the electron density ($RSRZ > 2$). Stretches of 2 or more consecutive residues without any outlier are shown as a green connector. Residues present in the sample, but not in the model, are shown in grey.

• Molecule 1: Glutamate receptor 1

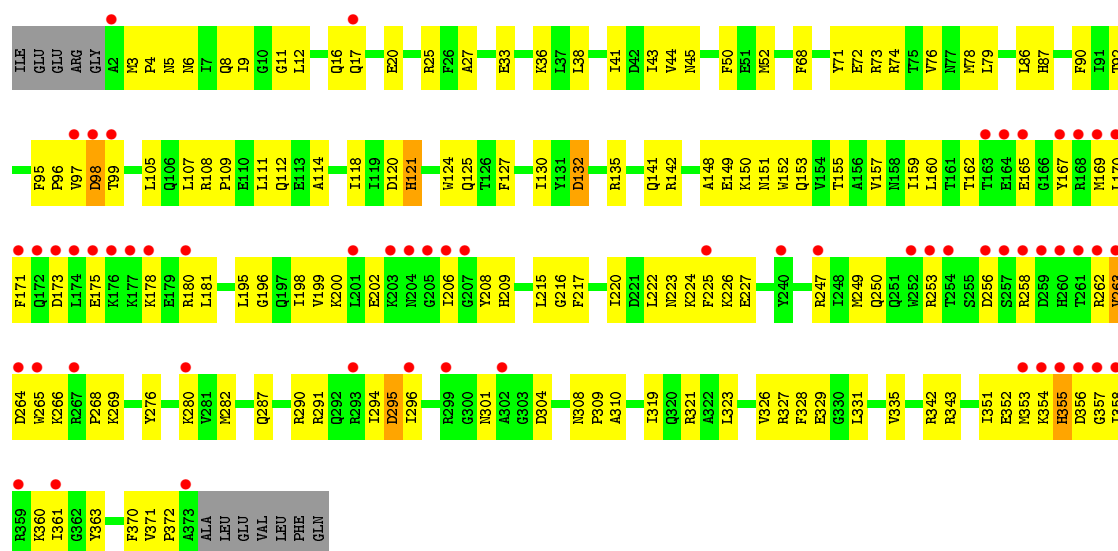


• Molecule 1: Glutamate receptor 1

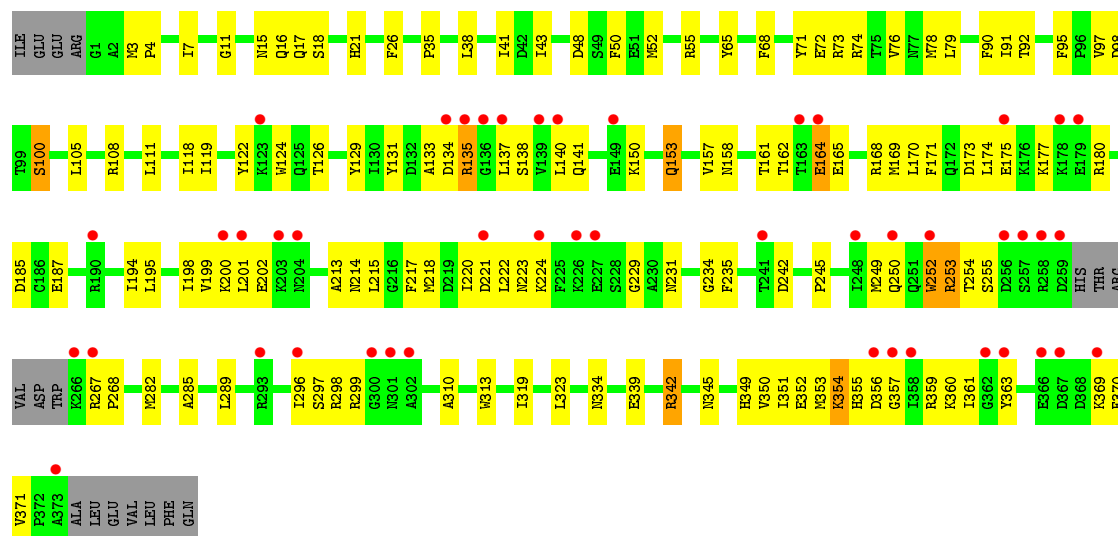


• Molecule 1: Glutamate receptor 1





• Molecule 1: Glutamate receptor 1



4 Data and refinement statistics

Property	Value	Source
Space group	P 21 21 21	Depositor
Cell constants a, b, c, α , β , γ	92.59Å 94.42Å 186.37Å 90.00° 90.00° 90.00°	Depositor
Resolution (Å)	93.18 – 2.50 41.46 – 2.50	Depositor EDS
% Data completeness (in resolution range)	99.2 (93.18-2.50) 99.3 (41.46-2.50)	Depositor EDS
R_{merge}	0.07	Depositor
R_{sym}	0.07	Depositor
$\langle I/\sigma(I) \rangle$ ¹	3.66 (at 2.51Å)	Xtriage
Refinement program	REFMAC 5.5.0109	Depositor
R, R_{free}	0.218 , 0.286 0.234 , 0.278	Depositor DCC
R_{free} test set	2894 reflections (5.35%)	DCC
Wilson B-factor (Å ²)	45.1	Xtriage
Anisotropy	0.553	Xtriage
Bulk solvent k_{sol} (e/Å ³), B_{sol} (Å ²)	0.32 , 51.7	EDS
Estimated twinning fraction	0.018 for k,h,-l	Xtriage
L-test for twinning ²	$\langle L \rangle = 0.48$, $\langle L^2 \rangle = 0.31$	Xtriage
Outliers	0 of 57162 reflections	Xtriage
F_o, F_c correlation	0.92	EDS
Total number of atoms	12534	wwPDB-VP
Average B, all atoms (Å ²)	70.0	wwPDB-VP

Xtriage's analysis on translational NCS is as follows: *The largest off-origin peak in the Patterson function is 5.92% of the height of the origin peak. No significant pseudotranslation is detected.*

¹Intensities estimated from amplitudes.

²Theoretical values of $\langle |L| \rangle$, $\langle L^2 \rangle$ for acentric reflections are 0.5, 0.375 respectively for untwinned datasets, and 0.333, 0.2 for perfectly twinned datasets.

5 Model quality [i](#)

5.1 Standard geometry [i](#)

Bond lengths and bond angles in the following residue types are not validated in this section: BMA, NAG, MAN

The Z score for a bond length (or angle) is the number of standard deviations the observed value is removed from the expected value. A bond length (or angle) with $|Z| > 5$ is considered an outlier worth inspection. RMSZ is the root-mean-square of all Z scores of the bond lengths (or angles).

Mol	Chain	Bond lengths		Bond angles	
		RMSZ	$\# Z > 5$	RMSZ	$\# Z > 5$
1	A	0.56	0/3049	0.66	1/4122 (0.0%)
1	B	0.50	0/3021	0.66	1/4085 (0.0%)
1	C	0.51	1/3082 (0.0%)	0.65	1/4171 (0.0%)
1	D	0.48	0/3025	0.65	2/4090 (0.0%)
All	All	0.52	1/12177 (0.0%)	0.65	5/16468 (0.0%)

Chiral center outliers are detected by calculating the chiral volume of a chiral center and verifying if the center is modelled as a planar moiety or with the opposite hand. A planarity outlier is detected by checking planarity of atoms in a peptide group, atoms in a mainchain group or atoms of a sidechain that are expected to be planar.

Mol	Chain	#Chirality outliers	#Planarity outliers
1	D	0	1

All (1) bond length outliers are listed below:

Mol	Chain	Res	Type	Atoms	Z	Observed(Å)	Ideal(Å)
1	C	268	PRO	N-CD	5.01	1.54	1.47

All (5) bond angle outliers are listed below:

Mol	Chain	Res	Type	Atoms	Z	Observed(°)	Ideal(°)
1	C	294	ILE	N-CA-C	-5.44	96.32	111.00
1	D	342	ARG	NE-CZ-NH2	-5.38	117.61	120.30
1	A	158	ASN	N-CA-C	-5.34	96.58	111.00
1	D	100	SER	N-CA-C	-5.34	96.59	111.00
1	B	343	ARG	NE-CZ-NH2	-5.33	117.64	120.30

There are no chirality outliers.

All (1) planarity outliers are listed below:

Mol	Chain	Res	Type	Group
1	D	299	ARG	Sidechain

5.2 Too-close contacts ⓘ

In the following table, the Non-H and H(model) columns list the number of non-hydrogen atoms and hydrogen atoms in the chain respectively. The H(added) column lists the number of hydrogen atoms added and optimized by MolProbity. The Clashes column lists the number of clashes within the asymmetric unit, whereas Symm-Clashes lists symmetry related clashes.

Mol	Chain	Non-H	H(model)	H(added)	Clashes	Symm-Clashes
1	A	2987	0	2956	162	0
1	B	2959	0	2920	173	0
1	C	3016	0	2973	193	0
1	D	2963	0	2925	160	0
2	A	39	0	34	2	0
2	B	39	0	34	2	0
2	D	39	0	34	2	0
3	A	56	0	50	1	0
3	B	56	0	50	1	0
3	C	56	0	50	3	0
3	D	56	0	50	4	0
4	A	14	0	13	1	0
4	B	14	0	13	1	0
4	D	14	0	13	4	0
5	C	83	0	70	1	0
6	A	49	0	0	3	0
6	B	29	0	0	3	0
6	C	41	0	0	4	0
6	D	24	0	0	1	0
All	All	12534	0	12185	675	0

The all-atom clashscore is defined as the number of clashes found per 1000 atoms (including hydrogen atoms). The all-atom clashscore for this structure is 28.

All (675) close contacts within the same asymmetric unit are listed below, sorted by their clash magnitude.

Atom-1	Atom-2	Interatomic distance (Å)	Clash overlap (Å)
1:D:73:ARG:HB2	1:D:134:ASP:O	1.25	1.29
1:C:352:GLU:HB2	1:C:361:ILE:CD1	1.65	1.25
1:D:26:PHE:CZ	1:D:252:TRP:HB3	1.72	1.23
1:C:11:GLY:HA3	1:C:41:ILE:HG22	1.23	1.17

Continued on next page...

Continued from previous page...

Atom-1	Atom-2	Interatomic distance (Å)	Clash overlap (Å)
1:D:133:ALA:HB2	1:D:158:ASN:HD21	1.09	1.17
1:A:126:THR:HG22	1:A:153:GLN:HB2	1.22	1.17
1:C:226:LYS:HG2	1:C:356:ASP:OD1	1.44	1.16
1:C:352:GLU:CB	1:C:361:ILE:HD11	1.74	1.15
1:D:3:MET:HG2	1:D:4:PRO:CD	1.77	1.15
1:B:197:GLN:O	1:B:201:LEU:HG	1.47	1.15
1:B:203:LYS:HD2	1:B:208:TYR:CZ	1.81	1.15
1:B:349:HIS:HD2	1:B:360:LYS:HE2	1.11	1.14
1:C:44:VAL:HG11	1:C:52:MET:HE1	1.29	1.14
1:B:203:LYS:HD2	1:B:208:TYR:CE2	1.84	1.12
1:D:133:ALA:HB2	1:D:158:ASN:ND2	1.65	1.10
1:D:11:GLY:HA3	1:D:41:ILE:HG22	1.24	1.10
1:A:128:VAL:HG21	1:A:180:ARG:HH21	0.98	1.10
1:B:349:HIS:CD2	1:B:360:LYS:HE2	1.86	1.10
1:B:255:SER:HA	1:B:258:ARG:HD2	1.27	1.09
1:A:249:MET:O	1:A:253:ARG:HG2	1.53	1.07
1:B:76:VAL:HG21	1:B:97:VAL:HG11	1.34	1.06
1:A:174:LEU:HG	1:A:174:LEU:O	1.56	1.06
1:A:16:GLN:HB2	1:A:43:ILE:HD11	1.39	1.04
1:A:374:ALA:O	1:A:375:LEU:HD13	1.56	1.04
1:B:203:LYS:CD	1:B:208:TYR:CE2	2.41	1.04
1:B:216:GLY:O	1:B:219:ASP:HB2	1.56	1.03
1:D:3:MET:CG	1:D:4:PRO:HD2	1.89	1.03
1:C:353:MET:HE2	1:C:358:ILE:HD11	1.40	1.03
1:B:252:TRP:HA	1:B:255:SER:HB3	1.41	1.02
1:D:3:MET:HG2	1:D:4:PRO:HD2	1.02	1.01
1:D:133:ALA:CB	1:D:158:ASN:HD21	1.73	1.01
1:D:71:TYR:CD1	1:D:76:VAL:HG12	1.94	1.01
1:A:126:THR:CG2	1:A:153:GLN:HB2	1.91	1.00
1:B:249:MET:HB3	1:B:253:ARG:NH1	1.74	1.00
1:D:126:THR:HG22	1:D:153:GLN:HB3	1.44	1.00
1:B:132:ASP:HB2	6:B:406:HOH:O	1.61	0.99
1:C:96:PRO:HD3	1:C:108:ARG:HD2	1.41	0.99
1:C:9:ILE:HD12	1:C:282:MET:HE2	1.44	0.98
1:A:135:ARG:HH11	1:A:135:ARG:CG	1.76	0.98
1:B:349:HIS:CD2	1:B:360:LYS:CE	2.46	0.98
1:C:352:GLU:HB2	1:C:361:ILE:HD11	1.00	0.97
1:C:3:MET:SD	1:C:296:ILE:HD11	2.04	0.97
1:D:353:MET:HA	1:D:357:GLY:O	1.64	0.97
1:C:263:VAL:HG12	1:C:264:ASP:H	1.29	0.97
1:A:135:ARG:HG3	1:A:135:ARG:HH11	1.30	0.97

Continued on next page...

Continued from previous page...

Atom-1	Atom-2	Interatomic distance (Å)	Clash overlap (Å)
1:D:91:ILE:HD13	1:D:282:MET:HE3	1.43	0.96
1:C:352:GLU:OE2	1:C:354:LYS:HE3	1.64	0.95
1:A:128:VAL:HG21	1:A:180:ARG:NH2	1.80	0.95
1:C:353:MET:HE2	1:C:358:ILE:CD1	1.97	0.95
1:B:249:MET:CB	1:B:253:ARG:NH1	2.30	0.95
1:B:170:LEU:O	1:B:174:LEU:HG	1.66	0.95
1:C:199:VAL:O	1:C:202:GLU:HG2	1.67	0.94
1:B:157:VAL:HG13	1:B:162:THR:HG21	1.49	0.94
1:D:71:TYR:CE1	1:D:76:VAL:HG12	2.02	0.94
1:B:174:LEU:CD2	1:B:180:ARG:HD3	1.98	0.94
1:C:44:VAL:HG21	1:C:52:MET:HE3	1.46	0.94
1:A:131:TYR:CZ	1:A:158:ASN:HB2	2.03	0.93
1:B:349:HIS:HD2	1:B:360:LYS:CE	1.82	0.93
1:D:126:THR:HG22	1:D:153:GLN:CB	1.98	0.93
1:D:26:PHE:CE1	1:D:252:TRP:HB3	2.04	0.93
1:A:159:ILE:HD12	1:A:167:TYR:OH	1.70	0.92
1:B:174:LEU:HD23	1:B:180:ARG:HD3	1.52	0.91
1:B:203:LYS:HD2	1:B:208:TYR:OH	1.68	0.91
1:C:165:GLU:O	1:C:169:MET:HG2	1.68	0.91
1:A:374:ALA:O	1:A:375:LEU:CD1	2.19	0.90
1:B:26:PHE:CE1	1:B:252:TRP:HB3	2.06	0.90
1:D:91:ILE:HD13	1:D:282:MET:CE	2.01	0.90
1:D:3:MET:CG	1:D:4:PRO:CD	2.47	0.89
1:A:1:GLY:N	1:A:295:ASP:HB2	1.87	0.89
1:A:190:ARG:HG2	1:A:194:ILE:HD12	1.54	0.88
1:A:57:CYS:HG	1:A:305:CYS:HG	1.01	0.88
1:C:181:LEU:HD23	1:C:209:HIS:HB2	1.55	0.88
1:D:135:ARG:HG3	1:D:135:ARG:HH11	1.35	0.88
1:A:169:MET:SD	1:A:169:MET:O	2.32	0.88
1:A:99:THR:HG22	1:A:99:THR:O	1.71	0.88
1:C:130:ILE:HD11	1:C:167:TYR:HE1	1.39	0.88
1:A:170:LEU:HD12	1:A:180:ARG:HH22	1.39	0.87
1:C:353:MET:CE	1:C:358:ILE:CD1	2.51	0.87
1:B:350:VAL:O	1:B:361:ILE:HG22	1.73	0.87
1:A:170:LEU:CD1	1:A:180:ARG:HH22	1.88	0.87
1:B:106:GLN:NE2	1:B:342:ARG:HD3	1.90	0.86
1:B:216:GLY:HA3	1:B:219:ASP:OD2	1.75	0.86
1:A:175:GLU:O	1:A:176:LYS:HB2	1.75	0.85
1:D:135:ARG:CG	1:D:135:ARG:HH11	1.90	0.85
1:A:131:TYR:O	1:A:158:ASN:HA	1.76	0.85
1:A:353:MET:HB2	1:A:358:ILE:HG22	1.59	0.85

Continued on next page...

Continued from previous page...

Atom-1	Atom-2	Interatomic distance (Å)	Clash overlap (Å)
1:C:99:THR:HG22	1:C:99:THR:O	1.77	0.84
1:B:204:ASN:O	1:B:228:SER:HB3	1.78	0.84
1:A:195:LEU:HD23	1:A:225:PHE:CE2	2.12	0.84
1:C:181:LEU:CD2	1:C:209:HIS:HB2	2.07	0.84
1:D:95:PHE:CD2	1:D:135:ARG:HB2	2.11	0.84
1:B:239:ASN:HB3	1:B:242:ASP:OD2	1.77	0.84
1:B:249:MET:HB2	1:B:253:ARG:HH12	1.41	0.84
1:A:220:ILE:HG22	1:A:221:ASP:N	1.93	0.83
1:A:363:TYR:CZ	1:A:371:VAL:HG21	2.13	0.83
1:A:159:ILE:HG23	1:A:167:TYR:OH	1.77	0.83
1:A:352:GLU:OE1	1:A:361:ILE:HG21	1.79	0.83
1:A:11:GLY:HA2	1:A:68:PHE:O	1.80	0.82
1:D:65:TYR:HE1	1:D:296:ILE:HG22	1.43	0.82
1:C:217:PHE:O	1:C:220:ILE:HG12	1.79	0.82
1:A:97:VAL:HG12	1:A:98:ASP:N	1.95	0.82
1:C:263:VAL:HG12	1:C:264:ASP:N	1.95	0.81
1:A:236:GLN:OE1	1:A:267:ARG:NH2	2.13	0.81
1:C:124:TRP:CD1	1:C:181:LEU:HD13	2.16	0.81
1:B:249:MET:CB	1:B:253:ARG:HH12	1.92	0.80
1:D:296:ILE:HD13	1:D:319:ILE:HD11	1.63	0.80
1:C:226:LYS:CG	1:C:356:ASP:OD1	2.29	0.80
1:C:223:ASN:O	1:C:227:GLU:HG3	1.81	0.80
1:B:128:VAL:HG21	1:B:174:LEU:HD21	1.64	0.80
1:B:203:LYS:CD	1:B:208:TYR:HE2	1.95	0.80
1:D:11:GLY:CA	1:D:41:ILE:HG22	2.09	0.80
1:A:71:TYR:CE2	1:A:92:THR:HG21	2.17	0.80
1:B:285:ALA:CB	1:B:323:LEU:HD23	2.12	0.79
1:C:124:TRP:CG	1:C:181:LEU:HD13	2.16	0.79
1:C:352:GLU:CG	1:C:361:ILE:HD11	2.12	0.79
1:A:374:ALA:O	1:A:375:LEU:HB2	1.82	0.79
1:D:363:TYR:CZ	1:D:371:VAL:HG21	2.18	0.79
1:B:40:GLN:OE1	1:B:62:LYS:HD3	1.82	0.79
1:A:191:LEU:HD21	1:A:212:LEU:HD13	1.64	0.79
1:D:73:ARG:CB	1:D:134:ASP:O	2.20	0.78
1:C:171:PHE:CD1	1:C:180:ARG:HD3	2.19	0.78
1:C:121:HIS:C	1:C:121:HIS:ND1	2.36	0.78
1:A:135:ARG:NH1	1:A:135:ARG:HG3	1.97	0.78
1:B:124:TRP:CZ2	1:B:181:LEU:HB3	2.19	0.78
1:D:26:PHE:CE2	1:D:252:TRP:HB3	2.19	0.78
1:B:203:LYS:HD3	1:B:208:TYR:CE2	2.18	0.78
1:C:71:TYR:HD2	1:C:90:PHE:HE2	1.30	0.77

Continued on next page...

Continued from previous page...

Atom-1	Atom-2	Interatomic distance (Å)	Clash overlap (Å)
1:A:220:ILE:HG22	1:A:221:ASP:H	1.45	0.77
1:D:133:ALA:HB2	1:D:158:ASN:CG	2.04	0.77
1:C:72:GLU:HG2	1:C:73:ARG:H	1.48	0.77
1:C:372:PRO:HB2	6:C:408:HOH:O	1.83	0.77
1:C:363:TYR:CZ	1:C:371:VAL:HG21	2.20	0.77
1:A:342:ARG:HH11	1:A:342:ARG:HG3	1.50	0.76
1:B:220:ILE:O	1:B:220:ILE:HG22	1.84	0.76
1:C:132:ASP:OD1	1:C:159:ILE:HD11	1.85	0.76
1:A:50:PHE:CE2	1:C:310:ALA:HB2	2.21	0.76
1:B:285:ALA:HB2	1:B:323:LEU:HD23	1.66	0.76
1:A:220:ILE:CG2	1:A:221:ASP:H	1.99	0.76
1:C:44:VAL:HG11	1:C:52:MET:CE	2.13	0.75
1:D:296:ILE:CD1	1:D:319:ILE:HD11	2.16	0.75
1:A:126:THR:HG22	1:A:153:GLN:CB	2.09	0.75
1:B:203:LYS:HD3	1:B:208:TYR:HE2	1.51	0.75
1:C:71:TYR:HD2	1:C:90:PHE:CE2	2.04	0.75
1:B:50:PHE:CE2	1:D:310:ALA:HB2	2.22	0.75
1:A:172:GLN:OE1	1:C:151:ASN:HB2	1.87	0.75
1:B:247:ARG:O	1:B:251:GLN:HG3	1.87	0.75
1:D:71:TYR:HD2	1:D:90:PHE:HE2	1.35	0.75
1:B:249:MET:HB3	1:B:253:ARG:HH11	1.51	0.75
4:A:900:NAG:O6	6:A:417:HOH:O	2.04	0.75
1:B:131:TYR:OH	1:D:141:GLN:NE2	2.20	0.74
1:D:360:LYS:HD2	4:D:900:NAG:O3	1.87	0.74
1:C:71:TYR:CD2	1:C:90:PHE:HE2	2.04	0.74
1:B:220:ILE:O	1:B:220:ILE:CG2	2.36	0.74
1:C:178:LYS:O	1:C:206:ILE:HG13	1.86	0.74
1:C:155:THR:OG1	1:C:170:LEU:HD21	1.88	0.74
1:C:44:VAL:CG2	1:C:52:MET:HE3	2.18	0.74
1:D:11:GLY:HA3	1:D:41:ILE:CG2	2.10	0.73
1:A:373:ALA:O	1:A:375:LEU:HD12	1.88	0.73
1:A:71:TYR:HE2	1:A:92:THR:HG21	1.51	0.73
1:C:352:GLU:HB2	1:C:361:ILE:CG1	2.17	0.73
1:B:302:ALA:HB3	1:C:5:ASN:HB3	1.70	0.73
1:D:135:ARG:NH1	1:D:185:ASP:OD2	2.20	0.73
1:A:170:LEU:CD1	1:A:180:ARG:NH2	2.51	0.73
1:A:1:GLY:H3	1:A:295:ASP:HB2	1.51	0.73
1:C:44:VAL:CG1	1:C:52:MET:HE1	2.14	0.73
1:A:352:GLU:HB2	1:A:361:ILE:HD13	1.71	0.73
1:C:124:TRP:HZ2	1:C:209:HIS:HB3	1.53	0.73
1:C:4:PRO:HD2	1:C:296:ILE:CD1	2.19	0.72

Continued on next page...

Continued from previous page...

Atom-1	Atom-2	Interatomic distance (Å)	Clash overlap (Å)
1:D:218:MET:O	1:D:267:ARG:NH2	2.22	0.72
1:C:11:GLY:CA	1:C:41:ILE:HG22	2.13	0.72
1:C:199:VAL:HA	1:C:202:GLU:OE2	1.88	0.72
1:A:71:TYR:HD2	1:A:90:PHE:HE2	1.37	0.72
1:C:353:MET:HE3	1:C:358:ILE:HD12	1.72	0.72
1:D:65:TYR:HE1	1:D:296:ILE:CG2	2.03	0.72
1:B:141:GLN:NE2	1:D:131:TYR:OH	2.22	0.72
1:B:248:ILE:HG21	1:B:331:LEU:HD21	1.72	0.72
1:B:242:ASP:HB2	1:B:245:PRO:HG2	1.70	0.71
1:C:71:TYR:CE2	1:C:92:THR:HG21	2.25	0.71
1:C:353:MET:CE	1:C:358:ILE:HD12	2.20	0.71
1:C:124:TRP:CZ2	1:C:181:LEU:HD22	2.26	0.71
1:B:217:PHE:CD1	1:B:234:GLY:HA3	2.25	0.71
1:D:168:ARG:HD2	1:D:201:LEU:HD11	1.72	0.71
1:B:130:ILE:HG22	1:B:159:ILE:HD11	1.71	0.71
1:A:1:GLY:H2	1:A:295:ASP:HB2	1.56	0.71
1:D:71:TYR:CD2	1:D:90:PHE:HE2	2.09	0.70
1:D:352:GLU:OE2	3:D:700:NAG:C1	2.39	0.70
1:A:130:ILE:CG2	1:A:159:ILE:HD11	2.20	0.70
1:D:285:ALA:HB2	1:D:323:LEU:HD23	1.72	0.70
1:C:124:TRP:CE2	1:C:181:LEU:HD22	2.26	0.70
1:B:171:PHE:CD1	1:B:174:LEU:HD12	2.26	0.70
1:C:52:MET:HB3	1:C:78:MET:HE1	1.73	0.69
1:A:171:PHE:CZ	1:A:203:LYS:HE2	2.27	0.69
1:C:124:TRP:CZ3	1:C:181:LEU:HB3	2.27	0.69
1:C:130:ILE:HD11	1:C:167:TYR:CE1	2.26	0.69
1:A:310:ALA:HB2	1:C:50:PHE:CE2	2.28	0.69
1:B:70:PHE:CE1	1:B:93:PRO:HG2	2.27	0.69
1:D:71:TYR:HD2	1:D:90:PHE:CE2	2.11	0.68
1:B:354:LYS:O	1:B:357:GLY:N	2.26	0.68
1:A:124:TRP:CG	1:A:181:LEU:HD13	2.27	0.68
1:B:174:LEU:HD22	1:B:180:ARG:HD3	1.74	0.68
1:A:97:VAL:HG12	1:A:98:ASP:H	1.57	0.68
1:B:307:ALA:HB2	1:C:38:LEU:HD12	1.75	0.68
1:C:263:VAL:CG1	1:C:264:ASP:H	2.05	0.68
1:D:105:LEU:CD1	1:D:323:LEU:HB3	2.24	0.68
1:C:253:ARG:NH2	1:C:266:LYS:O	2.27	0.68
1:B:52:MET:CE	1:B:79:LEU:HD11	2.23	0.68
1:A:374:ALA:O	1:A:375:LEU:CB	2.42	0.68
1:A:95:PHE:CD2	1:A:135:ARG:O	2.47	0.67
1:B:11:GLY:HA3	1:B:41:ILE:HG22	1.76	0.67

Continued on next page...

Continued from previous page...

Atom-1	Atom-2	Interatomic distance (Å)	Clash overlap (Å)
1:A:167:TYR:HB2	1:A:201:LEU:HD13	1.75	0.67
1:D:164:GLU:CD	1:D:164:GLU:H	1.96	0.67
1:C:8:GLN:HG3	1:C:38:LEU:HD23	1.76	0.67
1:A:11:GLY:HA3	1:A:41:ILE:HG22	1.77	0.67
1:D:126:THR:HG22	1:D:153:GLN:HB2	1.77	0.67
1:B:26:PHE:CZ	1:B:252:TRP:HB3	2.29	0.66
1:B:179:GLU:HB2	1:B:207:GLY:O	1.95	0.66
1:C:352:GLU:OE2	1:C:354:LYS:CE	2.42	0.66
1:C:11:GLY:HA2	1:C:68:PHE:O	1.95	0.66
1:A:52:MET:HB2	1:A:78:MET:HE1	1.77	0.66
1:A:80:THR:O	1:A:101:ASN:ND2	2.27	0.66
1:B:299:ARG:HD2	1:B:313:TRP:CE2	2.30	0.66
1:B:130:ILE:CG2	1:B:159:ILE:HD11	2.26	0.66
1:C:124:TRP:CH2	1:C:181:LEU:HB3	2.31	0.66
1:C:4:PRO:HD2	1:C:296:ILE:HD12	1.78	0.66
1:C:74:ARG:NH1	3:C:601:NAG:O7	2.28	0.66
1:A:363:TYR:CZ	1:A:371:VAL:CG2	2.79	0.66
1:D:165:GLU:O	1:D:169:MET:HG2	1.95	0.65
1:B:321:ARG:HG2	1:C:258:ARG:NE	2.11	0.65
1:C:175:GLU:OE2	1:C:178:LYS:NZ	2.27	0.65
1:C:180:ARG:NE	1:C:206:ILE:HD13	2.12	0.65
1:D:289:LEU:HD13	1:D:296:ILE:HD11	1.78	0.65
3:C:600:NAG:H81	1:D:17:GLN:HE22	1.61	0.65
1:A:130:ILE:HG23	1:A:159:ILE:HD11	1.78	0.65
1:D:72:GLU:OE2	1:D:74:ARG:HD3	1.97	0.64
1:C:180:ARG:CD	1:C:206:ILE:HD13	2.28	0.64
1:B:310:ALA:HB2	1:D:50:PHE:CE2	2.32	0.64
1:A:130:ILE:HG23	1:A:159:ILE:CG1	2.27	0.64
1:B:254:THR:O	1:B:258:ARG:HG3	1.97	0.64
1:A:374:ALA:C	1:A:375:LEU:CD1	2.65	0.64
1:A:130:ILE:HG23	1:A:159:ILE:HG12	1.78	0.64
1:C:71:TYR:HE2	1:C:92:THR:HG21	1.61	0.64
1:D:71:TYR:CD1	1:D:76:VAL:CG1	2.78	0.64
1:A:71:TYR:CB	1:A:79:LEU:HD12	2.28	0.64
1:C:44:VAL:HG21	1:C:52:MET:CE	2.26	0.64
1:A:97:VAL:CG1	1:A:98:ASP:N	2.60	0.64
1:B:216:GLY:O	1:B:219:ASP:CB	2.42	0.64
1:D:135:ARG:NH1	1:D:135:ARG:HG3	2.08	0.64
1:A:52:MET:CB	1:A:78:MET:HE1	2.28	0.64
1:B:74:ARG:HH21	2:B:601:NAG:H83	1.63	0.63
1:C:353:MET:HE3	1:C:358:ILE:CD1	2.26	0.63

Continued on next page...

Continued from previous page...

Atom-1	Atom-2	Interatomic distance (Å)	Clash overlap (Å)
1:A:130:ILE:HG23	1:A:159:ILE:CD1	2.28	0.63
1:A:95:PHE:CE2	1:A:135:ARG:O	2.51	0.63
1:A:74:ARG:NH1	2:A:601:NAG:H83	2.13	0.63
1:B:132:ASP:OD1	1:B:135:ARG:NH2	2.32	0.63
1:B:72:GLU:CD	1:B:73:ARG:N	2.51	0.63
1:B:52:MET:CB	1:B:78:MET:HE2	2.29	0.63
1:C:178:LYS:O	1:C:206:ILE:CG1	2.46	0.63
1:D:133:ALA:HB2	1:D:158:ASN:OD1	1.99	0.63
1:A:159:ILE:CD1	1:A:167:TYR:OH	2.44	0.63
1:A:97:VAL:CG1	1:A:98:ASP:H	2.11	0.63
1:C:351:ILE:CD1	1:C:360:LYS:HG3	2.29	0.63
1:D:73:ARG:HD3	1:D:137:LEU:HD23	1.81	0.62
1:D:352:GLU:OE2	3:D:700:NAG:N2	2.30	0.62
1:D:15:ASN:O	1:D:21:HIS:NE2	2.31	0.62
1:B:157:VAL:CG1	1:B:162:THR:HG21	2.25	0.62
1:C:301:ASN:O	1:C:304:ASP:HB2	2.00	0.62
1:D:52:MET:HB3	1:D:78:MET:CE	2.28	0.62
1:C:363:TYR:CZ	1:C:371:VAL:CG2	2.83	0.62
1:A:124:TRP:CD1	1:A:181:LEU:HD13	2.34	0.62
1:C:226:LYS:HE2	1:C:356:ASP:CG	2.20	0.62
1:B:52:MET:HB3	1:B:78:MET:HE2	1.82	0.62
1:A:135:ARG:HH21	1:A:214:ASN:HB2	1.64	0.62
1:A:71:TYR:HB3	1:A:79:LEU:CD1	2.30	0.62
1:B:307:ALA:HB2	1:C:38:LEU:CD1	2.30	0.62
1:A:131:TYR:CE1	1:A:158:ASN:HB2	2.34	0.62
3:C:600:NAG:H81	1:D:17:GLN:NE2	2.15	0.62
1:A:249:MET:O	1:A:253:ARG:CG	2.42	0.62
1:C:199:VAL:O	1:C:202:GLU:CG	2.45	0.62
1:A:170:LEU:HD12	1:A:180:ARG:NH2	2.12	0.62
1:B:354:LYS:HB2	3:B:700:NAG:O7	2.00	0.61
1:B:40:GLN:HE22	1:B:62:LYS:HE2	1.63	0.61
1:C:196:GLY:O	1:C:200:LYS:HE3	2.00	0.61
1:B:248:ILE:CG2	1:B:331:LEU:HD21	2.31	0.61
1:A:170:LEU:HD13	1:A:180:ARG:NH2	2.14	0.61
1:A:353:MET:CB	1:A:358:ILE:HG22	2.29	0.61
1:C:16:GLN:HG3	1:C:43:ILE:HD11	1.82	0.61
1:D:249:MET:HE2	1:D:268:PRO:CD	2.31	0.61
1:B:52:MET:HB3	1:B:78:MET:CE	2.31	0.60
1:A:72:GLU:HG2	1:A:73:ARG:H	1.65	0.60
1:C:52:MET:HA	1:C:52:MET:CE	2.30	0.60
1:B:106:GLN:HE21	1:B:342:ARG:HD3	1.65	0.60

Continued on next page...

Continued from previous page...

Atom-1	Atom-2	Interatomic distance (Å)	Clash overlap (Å)
1:B:239:ASN:HB3	1:B:242:ASP:CG	2.20	0.60
1:B:197:GLN:O	1:B:201:LEU:CG	2.37	0.60
1:D:371:VAL:O	1:D:371:VAL:CG2	2.48	0.60
1:C:352:GLU:CD	1:C:361:ILE:HD11	2.22	0.59
1:B:95:PHE:CD1	1:B:96:PRO:HD2	2.37	0.59
1:C:52:MET:HE2	1:C:52:MET:HA	1.82	0.59
1:C:72:GLU:HG2	1:C:73:ARG:N	2.17	0.59
1:D:11:GLY:HA2	1:D:68:PHE:O	2.02	0.59
1:D:65:TYR:CE1	1:D:296:ILE:CG2	2.84	0.59
1:C:206:ILE:HG23	1:C:208:TYR:CE1	2.37	0.59
1:C:195:LEU:HB3	1:C:225:PHE:CZ	2.36	0.59
1:A:132:ASP:C	1:A:132:ASP:OD1	2.40	0.59
1:B:71:TYR:HD2	1:B:90:PHE:HE2	1.50	0.59
1:A:191:LEU:HD23	1:A:220:ILE:HG13	1.85	0.59
1:C:76:VAL:HG21	1:C:97:VAL:HG11	1.84	0.59
1:D:352:GLU:HB2	1:D:361:ILE:HD11	1.84	0.59
1:D:111:LEU:HD13	1:D:215:LEU:HD21	1.83	0.59
1:B:124:TRP:CD1	1:B:181:LEU:HD13	2.37	0.59
1:A:288:SER:O	1:A:292:GLN:HB2	2.03	0.59
1:B:114:ALA:O	1:B:118:ILE:HG12	2.03	0.59
1:C:124:TRP:CE3	1:C:181:LEU:HB3	2.38	0.59
1:A:52:MET:CE	1:A:79:LEU:HD11	2.33	0.59
1:C:157:VAL:HG13	1:C:162:THR:OG1	2.03	0.59
1:C:52:MET:HB3	1:C:78:MET:CE	2.32	0.58
1:B:72:GLU:CD	1:B:73:ARG:H	2.06	0.58
1:A:52:MET:HB2	1:A:78:MET:CE	2.33	0.58
1:C:249:MET:CE	1:C:331:LEU:HD11	2.33	0.58
1:A:157:VAL:HG13	1:A:162:THR:HG21	1.85	0.58
1:C:159:ILE:HG13	1:C:160:LEU:HG	1.84	0.58
1:B:128:VAL:CG2	1:B:174:LEU:HD21	2.33	0.58
1:D:16:GLN:HG3	1:D:43:ILE:CD1	2.33	0.58
1:A:247:ARG:O	1:A:250:GLN:HB3	2.03	0.58
1:B:242:ASP:OD1	4:B:900:NAG:O5	2.22	0.58
1:A:342:ARG:NH1	1:A:342:ARG:HG3	2.16	0.58
1:C:111:LEU:HD21	1:C:215:LEU:HG	1.86	0.58
1:C:6:ASN:HD22	1:C:36:LYS:HB3	1.69	0.58
1:A:110:GLU:CD	1:A:112:GLN:HE22	2.08	0.57
1:C:263:VAL:O	1:C:264:ASP:HB2	2.04	0.57
1:A:374:ALA:C	1:A:375:LEU:HD12	2.24	0.57
1:C:223:ASN:O	1:C:227:GLU:CG	2.52	0.57
1:D:16:GLN:HA	1:D:43:ILE:HD11	1.85	0.57

Continued on next page...

Continued from previous page...

Atom-1	Atom-2	Interatomic distance (Å)	Clash overlap (Å)
1:A:96:PRO:HD3	1:A:108:ARG:HD2	1.86	0.57
1:B:17:GLN:HG3	1:B:17:GLN:O	2.04	0.57
1:B:200:LYS:C	1:B:202:GLU:H	2.04	0.57
1:C:25:ARG:NH2	1:C:262:ARG:NH1	2.52	0.57
1:C:11:GLY:HA3	1:C:41:ILE:CG2	2.15	0.57
1:C:180:ARG:HG3	1:C:206:ILE:HD11	1.87	0.57
1:D:129:TYR:CE2	1:D:131:TYR:HB3	2.40	0.56
1:D:252:TRP:HA	1:D:255:SER:HB2	1.87	0.56
1:A:157:VAL:CG1	1:A:162:THR:HG21	2.35	0.56
1:C:17:GLN:NE2	2:D:600:NAG:H81	2.20	0.56
1:C:71:TYR:HB3	1:C:79:LEU:CD1	2.35	0.56
1:B:199:VAL:HG12	1:B:204:ASN:HD22	1.70	0.56
1:C:352:GLU:CD	1:C:354:LYS:HE3	2.25	0.56
1:A:363:TYR:CE2	1:A:371:VAL:CG2	2.88	0.56
1:A:218:MET:HG2	1:A:236:GLN:NE2	2.21	0.56
1:C:321:ARG:CZ	6:C:411:HOH:O	2.53	0.56
1:C:112:GLN:HG3	1:C:142:ARG:HG2	1.88	0.56
1:A:71:TYR:HD2	1:A:90:PHE:CE2	2.21	0.55
1:B:302:ALA:CB	1:C:5:ASN:HB3	2.35	0.55
1:B:171:PHE:CD2	1:B:201:LEU:HD13	2.41	0.55
1:C:124:TRP:CD2	1:C:181:LEU:HD13	2.41	0.55
1:A:52:MET:CB	1:A:78:MET:CE	2.85	0.55
1:D:194:ILE:HG22	1:D:198:ILE:HD12	1.89	0.55
1:B:217:PHE:C	1:B:219:ASP:H	2.09	0.55
1:D:363:TYR:CZ	1:D:371:VAL:CG2	2.90	0.55
1:C:180:ARG:NE	1:C:206:ILE:CD1	2.69	0.55
1:D:249:MET:HE2	1:D:268:PRO:HD2	1.88	0.55
1:B:95:PHE:CD2	1:B:134:ASP:HB3	2.41	0.55
1:A:220:ILE:CG2	1:A:221:ASP:N	2.56	0.55
1:D:351:ILE:HD11	4:D:900:NAG:H81	1.87	0.55
1:B:17:GLN:O	1:B:17:GLN:CG	2.55	0.55
1:A:178:LYS:C	1:A:179:GLU:HG2	2.26	0.55
1:B:131:TYR:CZ	1:B:140:LEU:HD22	2.42	0.55
1:B:40:GLN:OE1	1:B:62:LYS:CD	2.54	0.55
1:D:285:ALA:CB	1:D:323:LEU:HD23	2.36	0.55
1:B:306:LEU:O	6:B:391:HOH:O	2.18	0.55
1:C:16:GLN:HG3	1:C:43:ILE:CD1	2.37	0.55
1:B:293:ARG:HA	6:B:402:HOH:O	2.06	0.54
1:D:249:MET:CE	1:D:268:PRO:CD	2.85	0.54
1:C:321:ARG:NH2	6:C:411:HOH:O	2.39	0.54
1:B:52:MET:HE1	1:B:79:LEU:HD11	1.88	0.54

Continued on next page...

Continued from previous page...

Atom-1	Atom-2	Interatomic distance (Å)	Clash overlap (Å)
1:D:71:TYR:CE1	1:D:76:VAL:CG1	2.86	0.54
1:A:71:TYR:HB3	1:A:79:LEU:HD12	1.90	0.54
1:C:98:ASP:HA	1:C:342:ARG:NH2	2.23	0.54
1:B:350:VAL:C	1:B:361:ILE:HG22	2.27	0.54
1:B:130:ILE:CG2	1:B:159:ILE:CD1	2.85	0.54
1:B:277:ASP:OD1	1:B:280:LYS:NZ	2.40	0.53
1:D:71:TYR:CE2	1:D:92:THR:HG21	2.43	0.53
1:B:185:ASP:HA	1:B:213:ALA:HB3	1.90	0.53
1:C:52:MET:CB	1:C:78:MET:CE	2.86	0.53
3:A:700:NAG:H61	3:A:701:NAG:C7	2.38	0.53
1:A:99:THR:CG2	1:A:99:THR:O	2.45	0.53
1:A:71:TYR:HB2	1:A:79:LEU:HD12	1.88	0.53
1:A:27:ALA:HB2	1:A:276:TYR:CD1	2.43	0.53
1:A:135:ARG:HG2	1:A:135:ARG:HH11	1.69	0.53
1:B:124:TRP:CE2	1:B:181:LEU:HB3	2.43	0.53
1:C:99:THR:CG2	1:C:99:THR:O	2.50	0.53
1:B:19:GLN:OE1	1:B:269:LYS:HE3	2.09	0.53
1:D:371:VAL:O	1:D:371:VAL:HG23	2.09	0.53
1:B:74:ARG:NH2	2:B:601:NAG:H83	2.23	0.53
1:A:363:TYR:CE2	1:A:371:VAL:HG21	2.43	0.52
1:D:174:LEU:HD23	1:D:177:LYS:NZ	2.24	0.52
1:A:322:ALA:O	6:A:409:HOH:O	2.19	0.52
1:B:349:HIS:CD2	1:B:360:LYS:HE3	2.42	0.52
1:B:252:TRP:HD1	1:B:252:TRP:H	1.57	0.52
1:D:195:LEU:HD11	1:D:220:ILE:CG2	2.39	0.52
1:B:288:SER:O	1:B:292:GLN:HG3	2.09	0.52
1:D:361:ILE:CG2	1:D:370:PHE:HZ	2.22	0.52
1:D:214:ASN:O	1:D:235:PHE:HB2	2.10	0.52
1:B:179:GLU:HG3	1:B:207:GLY:HA3	1.92	0.52
1:D:98:ASP:O	1:D:342:ARG:NH2	2.43	0.52
1:A:153:GLN:OE1	1:C:153:GLN:HG3	2.10	0.52
1:D:185:ASP:HA	1:D:213:ALA:HB3	1.92	0.52
1:C:125:GLN:O	1:C:152:TRP:HA	2.10	0.52
1:B:52:MET:HE3	1:B:79:LEU:HD11	1.90	0.51
1:C:114:ALA:O	1:C:118:ILE:HG12	2.10	0.51
1:A:153:GLN:OE1	1:C:153:GLN:CG	2.58	0.51
1:B:171:PHE:HA	1:B:174:LEU:HD12	1.91	0.51
1:D:16:GLN:HG3	1:D:43:ILE:HD11	1.91	0.51
1:C:256:ASP:HB3	1:C:265:TRP:NE1	2.24	0.51
1:D:3:MET:CG	1:D:4:PRO:HD3	2.39	0.51
1:C:253:ARG:HH22	1:C:266:LYS:C	2.13	0.51

Continued on next page...

Continued from previous page...

Atom-1	Atom-2	Interatomic distance (Å)	Clash overlap (Å)
1:B:201:LEU:O	1:B:203:LYS:HG2	2.10	0.51
1:C:124:TRP:CZ2	1:C:209:HIS:HB3	2.41	0.51
1:B:364:TRP:HD1	1:B:370:PHE:HB2	1.76	0.51
1:D:126:THR:CG2	1:D:153:GLN:HB3	2.31	0.51
1:C:124:TRP:CZ2	1:C:181:LEU:HB3	2.45	0.51
1:A:47:SER:OG	1:A:72:GLU:OE1	2.25	0.51
1:C:95:PHE:CE1	1:C:135:ARG:NH2	2.79	0.51
1:B:249:MET:HB2	1:B:253:ARG:NH1	2.07	0.51
1:C:249:MET:HE2	1:C:331:LEU:HD11	1.92	0.51
1:C:295:ASP:O	1:C:296:ILE:HG23	2.11	0.51
1:D:72:GLU:O	1:D:76:VAL:HG13	2.11	0.50
1:D:52:MET:CB	1:D:78:MET:CE	2.88	0.50
1:D:352:GLU:HB2	1:D:361:ILE:CD1	2.41	0.50
1:B:204:ASN:O	1:B:204:ASN:OD1	2.30	0.50
1:B:16:GLN:HA	1:B:43:ILE:CD1	2.41	0.50
1:A:236:GLN:HB3	1:A:349:HIS:HB2	1.93	0.50
1:B:40:GLN:NE2	1:B:62:LYS:HE2	2.27	0.50
1:D:252:TRP:HA	1:D:255:SER:CB	2.41	0.50
1:A:128:VAL:HB	1:A:182:VAL:HG22	1.93	0.50
1:A:169:MET:SD	1:A:169:MET:C	2.89	0.50
1:D:79:LEU:HD23	1:D:90:PHE:CE2	2.46	0.50
1:B:200:LYS:C	1:B:202:GLU:N	2.64	0.50
1:B:255:SER:O	1:B:258:ARG:HB2	2.11	0.50
1:A:71:TYR:CD1	1:A:71:TYR:O	2.65	0.50
1:D:363:TYR:CE2	1:D:371:VAL:HG21	2.47	0.50
1:D:352:GLU:OE2	3:D:700:NAG:C2	2.60	0.50
1:A:132:ASP:OD1	1:A:132:ASP:O	2.30	0.50
1:B:97:VAL:CG2	1:B:100:SER:HB3	2.41	0.49
1:D:296:ILE:HG22	1:D:297:SER:N	2.26	0.49
1:D:108:ARG:NH1	1:D:187:GLU:OE2	2.39	0.49
1:C:226:LYS:HE2	1:C:356:ASP:OD1	2.12	0.49
1:B:240:TYR:HD1	1:B:249:MET:HE2	1.78	0.49
1:D:352:GLU:O	1:D:357:GLY:O	2.30	0.49
1:A:218:MET:CG	1:A:236:GLN:NE2	2.76	0.49
1:D:171:PHE:O	1:D:175:GLU:HG2	2.12	0.49
1:C:296:ILE:HG21	1:C:319:ILE:HD11	1.93	0.49
1:B:239:ASN:CB	1:B:242:ASP:OD2	2.53	0.49
1:D:168:ARG:HA	1:D:201:LEU:HD21	1.94	0.49
1:D:105:LEU:HD13	1:D:323:LEU:HB3	1.95	0.49
1:B:276:TYR:CE2	1:B:280:LYS:HD2	2.47	0.49
1:D:356:ASP:OD1	1:D:356:ASP:O	2.30	0.49

Continued on next page...

Continued from previous page...

Atom-1	Atom-2	Interatomic distance (Å)	Clash overlap (Å)
1:C:121:HIS:CD2	1:C:370:PHE:CE2	2.99	0.49
1:B:130:ILE:HG22	1:B:159:ILE:CD1	2.40	0.49
1:B:72:GLU:CG	1:B:73:ARG:H	2.25	0.49
1:A:131:TYR:HA	1:A:185:ASP:O	2.13	0.49
1:D:361:ILE:HG22	1:D:370:PHE:HZ	1.75	0.49
1:D:52:MET:HB3	1:D:78:MET:HE1	1.94	0.49
1:D:242:ASP:HB3	1:D:245:PRO:HG2	1.93	0.49
1:D:224:LYS:NZ	6:D:387:HOH:O	2.41	0.49
1:B:317:ILE:HG13	1:B:317:ILE:O	2.12	0.49
1:D:91:ILE:HD13	1:D:282:MET:HE2	1.89	0.49
1:B:199:VAL:O	1:B:202:GLU:HA	2.13	0.49
1:C:180:ARG:HD2	1:C:206:ILE:HD13	1.94	0.49
1:C:121:HIS:CD2	1:C:370:PHE:HE2	2.31	0.48
1:B:124:TRP:CH2	1:B:181:LEU:HB3	2.47	0.48
1:C:72:GLU:CG	1:C:73:ARG:N	2.76	0.48
1:A:130:ILE:CG2	1:A:159:ILE:CG1	2.91	0.48
1:A:52:MET:HE3	1:A:79:LEU:HD11	1.94	0.48
1:B:97:VAL:HG23	1:B:100:SER:HB3	1.95	0.48
1:D:65:TYR:CE1	1:D:296:ILE:HG22	2.34	0.48
1:C:3:MET:HE2	1:C:290:ARG:HA	1.95	0.48
1:C:181:LEU:HD22	1:C:209:HIS:HB2	1.90	0.48
1:B:106:GLN:HE22	1:B:342:ARG:HD3	1.74	0.48
1:B:199:VAL:O	1:B:202:GLU:N	2.46	0.48
1:C:16:GLN:HA	1:C:43:ILE:HD11	1.94	0.48
1:B:182:VAL:HG12	1:B:183:VAL:N	2.29	0.48
1:A:353:MET:HA	1:A:358:ILE:HA	1.95	0.48
1:C:157:VAL:CG1	1:C:162:THR:OG1	2.62	0.48
1:D:334:ASN:ND2	1:D:345:ASN:HB3	2.29	0.48
1:D:137:LEU:C	1:D:137:LEU:HD12	2.34	0.48
1:B:240:TYR:CE1	1:B:249:MET:HE3	2.48	0.48
1:A:135:ARG:NH1	1:A:135:ARG:CG	2.48	0.48
1:C:216:GLY:O	1:C:220:ILE:HG23	2.13	0.48
1:B:365:ASN:OD1	1:B:365:ASN:C	2.52	0.48
1:C:107:LEU:O	1:C:343:ARG:NH1	2.45	0.48
1:D:229:GLY:O	1:D:354:LYS:HE3	2.14	0.48
1:C:6:ASN:ND2	1:C:36:LYS:HB3	2.28	0.48
1:B:11:GLY:HA2	1:B:68:PHE:O	2.13	0.48
1:C:363:TYR:CE2	1:C:371:VAL:CG2	2.97	0.47
1:D:349:HIS:HB2	4:D:900:NAG:H82	1.95	0.47
1:A:124:TRP:CE2	1:A:181:LEU:HB3	2.49	0.47
1:B:135:ARG:NE	1:B:185:ASP:OD1	2.47	0.47

Continued on next page...

Continued from previous page...

Atom-1	Atom-2	Interatomic distance (Å)	Clash overlap (Å)
1:A:47:SER:CB	1:A:72:GLU:OE1	2.62	0.47
1:B:354:LYS:O	1:B:357:GLY:CA	2.62	0.47
1:D:194:ILE:HG22	1:D:198:ILE:CD1	2.44	0.47
1:B:226:LYS:HD3	1:B:356:ASP:OD1	2.15	0.47
1:B:106:GLN:NE2	1:B:342:ARG:CD	2.70	0.47
1:C:171:PHE:CE1	1:C:180:ARG:HB3	2.49	0.47
1:B:52:MET:HB2	1:B:78:MET:HE2	1.96	0.47
1:A:301:ASN:OD1	1:A:302:ALA:N	2.47	0.47
1:A:159:ILE:HD12	1:A:167:TYR:CZ	2.47	0.47
1:C:124:TRP:CD2	1:C:181:LEU:HB3	2.49	0.47
1:C:195:LEU:O	1:C:198:ILE:HG22	2.14	0.47
1:D:122:TYR:HB3	3:D:701:NAG:H81	1.96	0.47
1:D:289:LEU:HD13	1:D:296:ILE:CD1	2.44	0.47
1:A:119:ILE:HG23	1:A:124:TRP:HB2	1.97	0.47
1:C:263:VAL:CG1	1:C:264:ASP:N	2.67	0.47
1:A:190:ARG:HG2	1:A:194:ILE:CD1	2.36	0.47
1:C:105:LEU:HD21	1:C:323:LEU:HB3	1.95	0.47
1:D:199:VAL:HG23	1:D:200:LYS:N	2.29	0.47
1:C:124:TRP:CE2	1:C:181:LEU:HB3	2.50	0.47
1:D:105:LEU:CD1	1:D:323:LEU:CB	2.93	0.47
1:D:48:ASP:O	1:D:52:MET:HG2	2.14	0.47
1:D:119:ILE:HG23	1:D:124:TRP:HB2	1.97	0.47
1:D:199:VAL:HA	1:D:202:GLU:HG2	1.97	0.47
1:A:355:HIS:O	1:A:356:ASP:HB2	2.15	0.47
1:C:12:LEU:HD22	1:C:52:MET:CE	2.45	0.47
1:B:78:MET:SD	1:B:78:MET:C	2.93	0.47
1:A:54:TYR:O	1:A:58:SER:HB2	2.15	0.47
1:A:78:MET:C	1:A:78:MET:SD	2.93	0.46
1:C:304:ASP:OD2	6:C:406:HOH:O	2.20	0.46
1:C:149:GLU:HG3	1:C:150:LYS:HG3	1.97	0.46
1:B:26:PHE:CD1	1:B:252:TRP:HB3	2.47	0.46
1:D:354:LYS:O	1:D:357:GLY:N	2.49	0.46
1:C:280:LYS:HE3	1:C:328:PHE:HE1	1.80	0.46
1:C:287:GLN:O	1:C:291:ARG:HG2	2.15	0.46
1:A:8:GLN:HE21	1:A:38:LEU:HD23	1.79	0.46
1:B:126:THR:HG22	1:B:153:GLN:HB2	1.97	0.46
1:D:158:ASN:HB3	1:D:161:THR:HG22	1.96	0.46
1:C:86:LEU:O	1:C:87:HIS:HB2	2.16	0.46
1:C:20:GLU:OE1	1:C:20:GLU:N	2.34	0.46
1:A:130:ILE:HG21	1:A:159:ILE:HD11	1.94	0.46
1:A:76:VAL:HG13	1:A:77:ASN:N	2.31	0.46

Continued on next page...

Continued from previous page...

Atom-1	Atom-2	Interatomic distance (Å)	Clash overlap (Å)
1:C:171:PHE:C	1:C:173:ASP:N	2.66	0.46
1:C:108:ARG:HA	1:C:109:PRO:HD3	1.81	0.46
1:D:231:ASN:HA	1:D:354:LYS:HG3	1.98	0.46
1:D:108:ARG:HH12	1:D:187:GLU:CD	2.19	0.46
1:D:296:ILE:CG2	1:D:297:SER:N	2.79	0.46
1:C:105:LEU:CD2	1:C:323:LEU:HB3	2.45	0.46
1:D:250:GLN:O	1:D:254:THR:HG23	2.16	0.46
1:D:55:ARG:HD3	1:D:55:ARG:HA	1.75	0.46
1:B:70:PHE:HE1	1:B:93:PRO:HG2	1.77	0.45
1:C:280:LYS:HE3	1:C:328:PHE:CE1	2.51	0.45
1:B:206:ILE:HG13	1:B:206:ILE:H	1.57	0.45
1:C:222:LEU:HD22	1:C:353:MET:HE1	1.97	0.45
1:C:71:TYR:CD2	1:C:90:PHE:CE2	2.88	0.45
1:C:276:TYR:CE2	1:C:280:LYS:CD	2.98	0.45
1:D:129:TYR:CD2	1:D:140:LEU:HD13	2.51	0.45
1:B:72:GLU:CG	1:B:73:ARG:N	2.80	0.45
1:B:267:ARG:HA	1:B:268:PRO:HD3	1.77	0.45
1:B:222:LEU:O	1:B:223:ASN:OD1	2.34	0.45
1:A:130:ILE:CG2	1:A:159:ILE:CD1	2.91	0.45
1:B:354:LYS:HE2	1:B:359:ARG:HH12	1.82	0.45
1:C:352:GLU:OE1	1:C:361:ILE:CD1	2.65	0.45
1:D:361:ILE:HG22	1:D:370:PHE:CZ	2.52	0.45
1:B:71:TYR:CD2	1:B:90:PHE:HE2	2.32	0.45
1:D:26:PHE:CE2	1:D:252:TRP:CB	2.98	0.44
1:B:239:ASN:ND2	1:B:242:ASP:OD1	2.50	0.44
1:A:219:ASP:OD1	1:A:267:ARG:NH1	2.50	0.44
1:A:52:MET:HB3	1:A:78:MET:CE	2.47	0.44
1:D:71:TYR:CD2	1:D:90:PHE:CE2	2.94	0.44
1:B:174:LEU:HD23	1:B:180:ARG:CD	2.37	0.44
1:D:26:PHE:CZ	1:D:252:TRP:CB	2.68	0.44
1:D:135:ARG:NH1	1:D:135:ARG:CG	2.61	0.44
1:A:366:GLU:OE2	6:A:398:HOH:O	2.21	0.44
1:A:319:ILE:HD12	1:A:319:ILE:N	2.32	0.44
1:A:60:PHE:O	1:A:298:ARG:NH2	2.50	0.44
1:B:249:MET:O	1:B:253:ARG:HG3	2.18	0.44
1:C:25:ARG:NH2	1:C:262:ARG:HH12	2.14	0.44
1:A:169:MET:CE	1:C:148:ALA:O	2.65	0.44
1:D:157:VAL:HG13	1:D:162:THR:HG21	2.00	0.44
1:C:121:HIS:HD2	1:C:370:PHE:CE2	2.35	0.44
1:D:97:VAL:CG2	1:D:100:SER:HB3	2.47	0.44
1:A:373:ALA:O	1:A:375:LEU:CD1	2.62	0.43

Continued on next page...

Continued from previous page...

Atom-1	Atom-2	Interatomic distance (Å)	Clash overlap (Å)
1:C:124:TRP:HZ2	1:C:209:HIS:CB	2.28	0.43
1:A:70:PHE:CE1	1:A:93:PRO:HG2	2.53	0.43
1:B:250:GLN:CA	1:B:253:ARG:NH2	2.82	0.43
1:B:352:GLU:OE1	1:B:361:ILE:HD13	2.19	0.43
1:B:78:MET:CE	1:B:79:LEU:HG	2.49	0.43
1:B:71:TYR:HD2	1:B:90:PHE:CE2	2.31	0.43
1:D:369:LYS:HA	1:D:369:LYS:HD3	1.75	0.43
1:A:55:ARG:HA	1:A:55:ARG:HD3	1.81	0.43
1:C:353:MET:HA	1:C:357:GLY:O	2.17	0.43
1:C:3:MET:HG3	1:C:4:PRO:O	2.18	0.43
1:D:195:LEU:HD11	1:D:220:ILE:HG23	2.00	0.43
1:C:200:LYS:H	1:C:200:LYS:HG3	1.66	0.43
5:C:802:BMA:H4	5:C:803:MAN:H2	2.00	0.43
1:B:322:ALA:O	1:B:326:VAL:HG23	2.19	0.43
1:D:16:GLN:HA	1:D:43:ILE:CD1	2.48	0.43
1:C:352:GLU:OE1	1:C:361:ILE:HG12	2.18	0.43
1:C:276:TYR:CE2	1:C:280:LYS:HD2	2.54	0.43
1:D:71:TYR:HE2	1:D:92:THR:HG21	1.83	0.43
1:A:76:VAL:HG21	1:A:97:VAL:HG21	2.00	0.43
1:D:349:HIS:CB	4:D:900:NAG:H82	2.49	0.43
1:C:20:GLU:OE2	1:C:269:LYS:NZ	2.51	0.43
1:D:339:GLU:H	1:D:339:GLU:CD	2.22	0.43
1:C:226:LYS:HE3	1:C:356:ASP:C	2.39	0.43
1:C:352:GLU:HB2	1:C:361:ILE:HG13	2.01	0.43
1:A:371:VAL:O	1:A:371:VAL:HG23	2.19	0.43
1:C:224:LYS:NZ	1:C:225:PHE:CE1	2.83	0.42
1:B:16:GLN:HA	1:B:43:ILE:HD11	2.01	0.42
1:D:7:ILE:HG12	1:D:35:PRO:HB2	2.01	0.42
1:A:216:GLY:O	1:A:220:ILE:HG12	2.19	0.42
1:C:355:HIS:HB2	1:C:356:ASP:H	1.68	0.42
1:D:222:LEU:HD13	1:D:353:MET:HE1	2.02	0.42
1:A:194:ILE:O	1:A:198:ILE:HG12	2.20	0.42
1:A:175:GLU:O	1:A:176:LYS:CB	2.51	0.42
1:D:218:MET:C	1:D:267:ARG:HH22	2.23	0.42
1:C:17:GLN:HE22	2:D:600:NAG:C8	2.32	0.42
1:D:180:ARG:HD2	1:D:180:ARG:N	2.34	0.42
1:A:135:ARG:NH2	1:A:185:ASP:OD1	2.52	0.42
1:C:327:ARG:HA	1:C:335:VAL:O	2.20	0.42
1:C:247:ARG:O	1:C:250:GLN:HB2	2.20	0.42
1:D:249:MET:O	1:D:253:ARG:HB2	2.19	0.42
1:A:191:LEU:HD23	1:A:220:ILE:CG1	2.47	0.42

Continued on next page...

Continued from previous page...

Atom-1	Atom-2	Interatomic distance (Å)	Clash overlap (Å)
1:D:26:PHE:CE2	1:D:252:TRP:CG	3.07	0.42
1:D:363:TYR:CE2	1:D:371:VAL:CG2	3.02	0.42
1:B:128:VAL:HB	1:B:182:VAL:HG13	2.02	0.42
1:B:131:TYR:HD1	1:B:132:ASP:O	2.02	0.42
1:D:137:LEU:HD12	1:D:138:SER:N	2.34	0.42
1:A:137:LEU:HD11	1:C:141:GLN:OE1	2.19	0.42
1:C:96:PRO:CD	1:C:108:ARG:HD2	2.30	0.42
1:B:2:ALA:O	1:B:295:ASP:HA	2.20	0.42
1:A:135:ARG:HG3	1:A:135:ARG:O	2.19	0.41
1:D:18:SER:OG	1:D:21:HIS:HD2	2.03	0.41
1:C:25:ARG:CZ	1:C:262:ARG:HH12	2.33	0.41
1:C:12:LEU:HD22	1:C:52:MET:HE2	2.02	0.41
1:B:178:LYS:HB3	1:B:179:GLU:H	1.61	0.41
1:C:27:ALA:HB2	1:C:276:TYR:CD1	2.55	0.41
1:B:171:PHE:CG	1:B:174:LEU:HD12	2.56	0.41
1:D:65:TYR:CE1	1:D:296:ILE:HG21	2.54	0.41
1:A:71:TYR:CD2	1:A:90:PHE:HE2	2.27	0.41
1:D:122:TYR:OH	1:D:361:ILE:HD13	2.20	0.41
1:C:124:TRP:CE2	1:C:181:LEU:HD13	2.55	0.41
1:D:298:ARG:HD2	1:D:313:TRP:CE2	2.55	0.41
1:D:221:ASP:OD2	1:D:223:ASN:ND2	2.53	0.41
1:B:208:TYR:HB3	1:B:210:TYR:CE2	2.55	0.41
1:B:11:GLY:HA3	1:B:41:ILE:CG2	2.48	0.41
1:A:284:GLU:HB3	1:A:326:VAL:HG22	2.03	0.41
1:C:121:HIS:O	1:C:121:HIS:ND1	2.53	0.41
1:D:217:PHE:CD1	1:D:234:GLY:HA3	2.55	0.41
1:C:308:ASN:HA	1:C:309:PRO:HA	1.81	0.41
1:B:350:VAL:HB	1:B:361:ILE:CG2	2.49	0.41
1:D:319:ILE:N	1:D:319:ILE:HD12	2.36	0.41
1:C:132:ASP:HB3	1:C:135:ARG:HG2	2.03	0.41
1:D:26:PHE:CE1	1:D:252:TRP:CB	2.90	0.41
1:B:217:PHE:C	1:B:219:ASP:N	2.74	0.41
1:B:350:VAL:HB	1:B:361:ILE:HG23	2.02	0.41
1:B:106:GLN:HE22	1:B:342:ARG:CD	2.32	0.41
1:A:195:LEU:CD2	1:A:225:PHE:CE2	2.94	0.41
1:A:350:VAL:HG23	1:A:363:TYR:HA	2.01	0.41
1:A:47:SER:HB3	1:A:72:GLU:OE1	2.21	0.41
1:B:3:MET:CE	1:B:289:LEU:HB3	2.51	0.41
1:B:276:TYR:O	1:B:280:LYS:HD3	2.21	0.41
1:A:124:TRP:CZ2	1:A:181:LEU:HB3	2.56	0.40
1:A:74:ARG:NH1	2:A:601:NAG:C8	2.82	0.40

Continued on next page...

Continued from previous page...

Atom-1	Atom-2	Interatomic distance (Å)	Clash overlap (Å)
1:A:317:ILE:O	1:A:321:ARG:HG3	2.21	0.40
1:A:171:PHE:HA	1:A:174:LEU:HB3	2.01	0.40
1:C:33:GLU:HB2	1:C:287:GLN:NE2	2.35	0.40
1:B:198:ILE:O	1:B:201:LEU:HB2	2.22	0.40
1:C:44:VAL:HG22	1:C:45:ASN:N	2.36	0.40
1:B:240:TYR:CD1	1:B:249:MET:CE	3.05	0.40
1:D:352:GLU:OE1	1:D:359:ARG:NH2	2.54	0.40
1:C:121:HIS:HD2	1:C:370:PHE:HE2	1.68	0.40
1:D:170:LEU:C	1:D:170:LEU:HD12	2.41	0.40
1:D:354:LYS:O	1:D:355:HIS:C	2.59	0.40
1:A:73:ARG:O	1:A:76:VAL:HG12	2.21	0.40
1:C:171:PHE:C	1:C:173:ASP:H	2.24	0.40
1:A:173:ASP:OD2	1:A:173:ASP:N	2.54	0.40
1:D:118:ILE:HD11	1:D:350:VAL:HG21	2.03	0.40
1:C:127:PHE:HB2	1:C:181:LEU:O	2.21	0.40

There are no symmetry-related clashes.

5.3 Torsion angles [i](#)

5.3.1 Protein backbone [i](#)

In the following table, the Percentiles column shows the percent Ramachandran outliers of the chain as a percentile score with respect to all X-ray entries followed by that with respect to entries of similar resolution.

The Analysed column shows the number of residues for which the backbone conformation was analysed, and the total number of residues.

Mol	Chain	Analysed	Favoured	Allowed	Outliers	Percentiles	
1	A	366/384 (95%)	354 (97%)	12 (3%)	0	100	100
1	B	362/384 (94%)	341 (94%)	20 (6%)	1 (0%)	46	68
1	C	370/384 (96%)	350 (95%)	19 (5%)	1 (0%)	46	68
1	D	363/384 (94%)	342 (94%)	21 (6%)	0	100	100
All	All	1461/1536 (95%)	1387 (95%)	72 (5%)	2 (0%)	56	78

All (2) Ramachandran outliers are listed below:

Mol	Chain	Res	Type
1	B	218	MET
1	C	263	VAL

5.3.2 Protein sidechains ⓘ

In the following table, the Percentiles column shows the percent sidechain outliers of the chain as a percentile score with respect to all X-ray entries followed by that with respect to entries of similar resolution.

The Analysed column shows the number of residues for which the sidechain conformation was analysed, and the total number of residues.

Mol	Chain	Analysed	Rotameric	Outliers	Percentiles	
1	A	322/336 (96%)	316 (98%)	6 (2%)	65	87
1	B	320/336 (95%)	318 (99%)	2 (1%)	90	97
1	C	326/336 (97%)	318 (98%)	8 (2%)	55	82
1	D	320/336 (95%)	311 (97%)	9 (3%)	51	78
All	All	1288/1344 (96%)	1263 (98%)	25 (2%)	65	87

All (25) residues with a non-rotameric sidechain are listed below:

Mol	Chain	Res	Type
1	A	72	GLU
1	A	106	GLN
1	A	135	ARG
1	A	250	GLN
1	A	331	LEU
1	A	356	ASP
1	B	252	TRP
1	B	299	ARG
1	C	98	ASP
1	C	120	ASP
1	C	121	HIS
1	C	132	ASP
1	C	295	ASP
1	C	326	VAL
1	C	329	GLU
1	C	355	HIS
1	D	38	LEU
1	D	135	ARG
1	D	150	LYS
1	D	153	GLN

Continued on next page...

Continued from previous page...

Mol	Chain	Res	Type
1	D	164	GLU
1	D	173	ASP
1	D	252	TRP
1	D	253	ARG
1	D	354	LYS

Some sidechains can be flipped to improve hydrogen bonding and reduce clashes. All (11) such sidechains are listed below:

Mol	Chain	Res	Type
1	A	17	GLN
1	B	141	GLN
1	B	197	GLN
1	B	204	ASN
1	B	349	HIS
1	B	355	HIS
1	C	6	ASN
1	C	17	GLN
1	C	355	HIS
1	D	17	GLN
1	D	141	GLN

5.3.3 RNA [i](#)

There are no RNA molecules in this entry.

5.4 Non-standard residues in protein, DNA, RNA chains [i](#)

There are no non-standard protein/DNA/RNA residues in this entry.

5.5 Carbohydrates [i](#)

32 carbohydrates are modelled in this entry.

In the following table, the Counts columns list the number of bonds (or angles) for which Mogul statistics could be retrieved, the number of bonds (or angles) that are observed in the model and the number of bonds (or angles) that are defined in the chemical component dictionary. The Link column lists molecule types, if any, to which the group is linked. The Z score for a bond length (or angle) is the number of standard deviations the observed value is removed from the expected value. A bond length (or angle) with $|Z| > 2$ is considered an outlier worth inspection. RMSZ is the root-mean-square of all Z scores of the bond lengths (or angles).

Mol	Type	Chain	Res	Link	Bond lengths			Bond angles		
					Counts	RMSZ	# Z > 2	Counts	RMSZ	# Z > 2
2	NAG	A	600	1,2	14,14,15	0.80	0	15,19,21	1.26	1 (6%)
2	NAG	A	601	2	14,14,15	0.48	0	15,19,21	2.45	2 (13%)
2	BMA	A	602	2	11,11,12	0.52	0	14,15,17	1.60	3 (21%)
3	NAG	A	700	1,3	14,14,15	0.61	0	15,19,21	0.71	0
3	NAG	A	701	3	14,14,15	0.60	0	15,19,21	2.27	6 (40%)
3	NAG	A	800	1,3	14,14,15	0.72	0	15,19,21	0.90	0
3	NAG	A	801	3	14,14,15	0.59	0	15,19,21	1.08	2 (13%)
2	NAG	B	600	1,2	14,14,15	0.47	0	15,19,21	1.24	2 (13%)
2	NAG	B	601	2	14,14,15	0.48	0	15,19,21	1.26	2 (13%)
2	BMA	B	602	2	11,11,12	0.57	0	14,15,17	1.33	2 (14%)
3	NAG	B	700	1,3	14,14,15	0.62	0	15,19,21	2.38	5 (33%)
3	NAG	B	701	3	14,14,15	0.55	0	15,19,21	1.01	1 (6%)
3	NAG	B	800	1,3	14,14,15	0.65	0	15,19,21	1.18	1 (6%)
3	NAG	B	801	3	14,14,15	0.39	0	15,19,21	2.00	2 (13%)
3	NAG	C	600	1,3	14,14,15	0.68	0	15,19,21	1.33	2 (13%)
3	NAG	C	601	3	14,14,15	0.54	0	15,19,21	1.22	2 (13%)
3	NAG	C	700	1,3	14,14,15	0.59	0	15,19,21	1.04	1 (6%)
3	NAG	C	701	3	14,14,15	0.54	0	15,19,21	1.45	2 (13%)
5	NAG	C	800	1,5	14,14,15	0.62	0	15,19,21	1.33	2 (13%)
5	NAG	C	801	5	14,14,15	0.66	0	15,19,21	1.05	0
5	BMA	C	802	5	11,11,12	0.49	0	14,15,17	1.08	1 (7%)
5	MAN	C	803	5	11,11,12	0.71	0	14,15,17	2.07	4 (28%)
5	MAN	C	804	5	11,11,12	0.78	0	14,15,17	1.68	4 (28%)
5	MAN	C	805	5	11,11,12	0.59	0	14,15,17	1.05	2 (14%)
5	MAN	C	806	5	11,11,12	0.59	0	14,15,17	1.21	2 (14%)
2	NAG	D	600	1,2	14,14,15	0.65	0	15,19,21	1.81	3 (20%)
2	NAG	D	601	2	14,14,15	0.66	0	15,19,21	1.55	5 (33%)
2	BMA	D	602	2	11,11,12	0.58	0	14,15,17	1.49	3 (21%)
3	NAG	D	700	1,3	14,14,15	1.46	1 (7%)	15,19,21	0.99	0
3	NAG	D	701	3	14,14,15	0.76	0	15,19,21	2.08	4 (26%)
3	NAG	D	800	1,3	14,14,15	1.44	1 (7%)	15,19,21	1.18	1 (6%)
3	NAG	D	801	3	14,14,15	0.59	0	15,19,21	1.08	1 (6%)

In the following table, the Chirals column lists the number of chiral outliers, the number of chiral centers analysed, the number of these observed in the model and the number defined in the chemical component dictionary. Similar counts are reported in the Torsion and Rings columns. '-' means

no outliers of that kind were identified.

Mol	Type	Chain	Res	Link	Chirals	Torsions	Rings
2	NAG	A	600	1,2	-	0/6/23/26	0/1/1/1
2	NAG	A	601	2	-	0/6/23/26	0/1/1/1
2	BMA	A	602	2	-	0/2/19/22	0/1/1/1
3	NAG	A	700	1,3	-	0/6/23/26	0/1/1/1
3	NAG	A	701	3	-	0/6/23/26	0/1/1/1
3	NAG	A	800	1,3	-	0/6/23/26	0/1/1/1
3	NAG	A	801	3	-	0/6/23/26	0/1/1/1
2	NAG	B	600	1,2	-	0/6/23/26	0/1/1/1
2	NAG	B	601	2	-	0/6/23/26	0/1/1/1
2	BMA	B	602	2	-	0/2/19/22	0/1/1/1
3	NAG	B	700	1,3	-	0/6/23/26	0/1/1/1
3	NAG	B	701	3	-	0/6/23/26	0/1/1/1
3	NAG	B	800	1,3	-	0/6/23/26	0/1/1/1
3	NAG	B	801	3	-	0/6/23/26	0/1/1/1
3	NAG	C	600	1,3	-	0/6/23/26	0/1/1/1
3	NAG	C	601	3	-	0/6/23/26	0/1/1/1
3	NAG	C	700	1,3	-	0/6/23/26	0/1/1/1
3	NAG	C	701	3	-	0/6/23/26	0/1/1/1
5	NAG	C	800	1,5	-	0/6/23/26	0/1/1/1
5	NAG	C	801	5	-	0/6/23/26	0/1/1/1
5	BMA	C	802	5	-	0/2/19/22	0/1/1/1
5	MAN	C	803	5	-	0/2/19/22	0/1/1/1
5	MAN	C	804	5	-	0/2/19/22	0/1/1/1
5	MAN	C	805	5	-	0/2/19/22	0/1/1/1
5	MAN	C	806	5	-	0/2/19/22	0/1/1/1
2	NAG	D	600	1,2	-	0/6/23/26	0/1/1/1
2	NAG	D	601	2	-	0/6/23/26	0/1/1/1
2	BMA	D	602	2	-	0/2/19/22	0/1/1/1
3	NAG	D	700	1,3	-	0/6/23/26	0/1/1/1
3	NAG	D	701	3	-	0/6/23/26	0/1/1/1
3	NAG	D	800	1,3	-	0/6/23/26	0/1/1/1
3	NAG	D	801	3	-	0/6/23/26	0/1/1/1

All (2) bond length outliers are listed below:

Mol	Chain	Res	Type	Atoms	Z	Observed(Å)	Ideal(Å)
3	D	700	NAG	O5-C1	-5.24	1.35	1.43
3	D	800	NAG	O5-C1	-5.13	1.35	1.43

All (68) bond angle outliers are listed below:

Mol	Chain	Res	Type	Atoms	Z	Observed(°)	Ideal(°)
3	A	701	NAG	C3-C4-C5	-4.12	103.02	110.20
2	D	600	NAG	O4-C4-C5	-4.06	98.47	109.24
2	D	600	NAG	C6-C5-C4	-3.53	104.30	113.02
3	C	600	NAG	C3-C4-C5	-3.22	104.58	110.20
3	B	700	NAG	O7-C7-C8	-3.01	116.54	122.06
2	D	602	BMA	O2-C2-C1	-2.94	103.31	109.21
2	A	601	NAG	C4-C3-C2	-2.88	106.75	111.23
3	A	701	NAG	C4-C3-C2	-2.85	106.80	111.23
3	B	801	NAG	C4-C3-C2	-2.69	107.05	111.23
3	D	800	NAG	C1-O5-C5	-2.47	109.12	112.25
3	B	701	NAG	O7-C7-C8	-2.40	117.66	122.06
5	C	806	MAN	O5-C1-C2	-2.34	107.06	110.86
2	D	601	NAG	C2-N2-C7	-2.22	120.18	123.04
5	C	800	NAG	O4-C4-C3	-2.22	105.34	110.34
2	D	601	NAG	O4-C4-C3	-2.22	105.34	110.34
3	D	701	NAG	C1-O5-C5	-2.15	109.52	112.25
2	D	601	NAG	O3-C3-C4	-2.13	105.55	110.34
3	C	700	NAG	C3-C4-C5	-2.07	106.58	110.20
3	C	601	NAG	O7-C7-C8	-2.05	118.30	122.06
3	C	601	NAG	C2-N2-C7	-2.04	120.42	123.04
2	D	602	BMA	O3-C3-C4	-2.02	105.78	110.34
2	B	601	NAG	O7-C7-C8	-2.01	118.37	122.06
2	D	601	NAG	O7-C7-C8	-2.01	118.38	122.06
2	B	600	NAG	C4-C3-C2	2.02	114.38	111.23
5	C	800	NAG	C4-C3-C2	2.02	114.38	111.23
3	B	700	NAG	O3-C3-C4	2.09	115.04	110.34
3	B	800	NAG	C2-N2-C7	2.09	125.72	123.04
3	A	701	NAG	O5-C5-C6	2.09	111.88	107.35
3	A	801	NAG	O5-C5-C6	2.10	111.89	107.35
2	D	602	BMA	C1-C2-C3	2.12	112.04	109.54
5	C	805	MAN	C1-C2-C3	2.16	112.09	109.54
3	C	701	NAG	C2-N2-C7	2.17	125.82	123.04
2	A	602	BMA	O5-C1-C2	2.17	114.38	110.86
3	D	801	NAG	C2-N2-C7	2.18	125.84	123.04
2	A	602	BMA	C1-O5-C5	2.20	115.03	112.25
5	C	805	MAN	C1-O5-C5	2.20	115.04	112.25
3	A	801	NAG	C4-C3-C2	2.25	114.73	111.23
5	C	802	BMA	C1-O5-C5	2.26	115.11	112.25
5	C	804	MAN	C1-O5-C5	2.27	115.13	112.25
2	D	601	NAG	O3-C3-C2	2.36	113.79	109.11
2	B	602	BMA	C3-C4-C5	2.44	114.45	110.20
5	C	806	MAN	C3-C4-C5	2.56	114.67	110.20
2	B	601	NAG	C8-C7-N2	2.60	121.08	116.11

Continued on next page...

Continued from previous page...

Mol	Chain	Res	Type	Atoms	Z	Observed(°)	Ideal(°)
5	C	803	MAN	C1-C2-C3	2.65	112.68	109.54
2	B	600	NAG	O5-C5-C6	2.68	113.16	107.35
3	A	701	NAG	O4-C4-C5	2.76	116.55	109.24
3	D	701	NAG	O7-C7-N2	2.78	127.54	121.86
3	C	600	NAG	O5-C5-C6	2.82	113.44	107.35
3	B	700	NAG	C2-N2-C7	2.99	126.88	123.04
5	C	804	MAN	C3-C4-C5	3.05	115.52	110.20
5	C	804	MAN	C1-C2-C3	3.15	113.27	109.54
2	B	602	BMA	C2-C3-C4	3.17	116.42	111.04
3	A	701	NAG	O3-C3-C2	3.23	115.51	109.11
5	C	804	MAN	C2-C3-C4	3.25	116.56	111.04
5	C	803	MAN	C2-C3-C4	3.29	116.63	111.04
5	C	803	MAN	C1-O5-C5	3.41	116.58	112.25
2	D	600	NAG	C1-O5-C5	3.49	116.68	112.25
2	A	600	NAG	C4-C3-C2	3.61	116.84	111.23
3	C	701	NAG	C1-O5-C5	3.77	117.03	112.25
3	D	701	NAG	C4-C3-C2	3.95	117.37	111.23
3	B	700	NAG	C4-C3-C2	3.97	117.40	111.23
2	A	602	BMA	C1-C2-C3	4.32	114.65	109.54
3	A	701	NAG	C1-O5-C5	4.57	118.05	112.25
3	D	701	NAG	C2-N2-C7	4.70	129.07	123.04
5	C	803	MAN	C3-C4-C5	4.94	118.80	110.20
3	B	700	NAG	C1-O5-C5	6.09	119.98	112.25
3	B	801	NAG	C1-O5-C5	6.70	120.75	112.25
2	A	601	NAG	C1-O5-C5	8.72	123.31	112.25

There are no chirality outliers.

There are no torsion outliers.

There are no ring outliers.

12 monomers are involved in 16 short contacts:

Mol	Chain	Res	Type	Clashes	Symm-Clashes
2	A	601	NAG	2	0
3	A	700	NAG	1	0
3	A	701	NAG	1	0
2	B	601	NAG	2	0
3	B	700	NAG	1	0
3	C	600	NAG	2	0
3	C	601	NAG	1	0
5	C	802	BMA	1	0
5	C	803	MAN	1	0

Continued on next page...

Continued from previous page...

Mol	Chain	Res	Type	Clashes	Symm-Clashes
2	D	600	NAG	2	0
3	D	700	NAG	3	0
3	D	701	NAG	1	0

5.6 Ligand geometry [i](#)

3 ligands are modelled in this entry.

In the following table, the Counts columns list the number of bonds (or angles) for which Mogul statistics could be retrieved, the number of bonds (or angles) that are observed in the model and the number of bonds (or angles) that are defined in the chemical component dictionary. The Link column lists molecule types, if any, to which the group is linked. The Z score for a bond length (or angle) is the number of standard deviations the observed value is removed from the expected value. A bond length (or angle) with $|Z| > 2$ is considered an outlier worth inspection. RMSZ is the root-mean-square of all Z scores of the bond lengths (or angles).

Mol	Type	Chain	Res	Link	Bond lengths			Bond angles		
					Counts	RMSZ	$\# Z > 2$	Counts	RMSZ	$\# Z > 2$
4	NAG	A	900	1	14,14,15	0.69	0	15,19,21	1.81	3 (20%)
4	NAG	B	900	1	14,14,15	0.45	0	15,19,21	1.26	2 (13%)
4	NAG	D	900	1	14,14,15	1.17	1 (7%)	15,19,21	2.93	9 (60%)

In the following table, the Chirals column lists the number of chiral outliers, the number of chiral centers analysed, the number of these observed in the model and the number defined in the chemical component dictionary. Similar counts are reported in the Torsion and Rings columns. '-' means no outliers of that kind were identified.

Mol	Type	Chain	Res	Link	Chirals	Torsions	Rings
4	NAG	A	900	1	-	0/6/23/26	0/1/1/1
4	NAG	B	900	1	-	0/6/23/26	0/1/1/1
4	NAG	D	900	1	-	0/6/23/26	0/1/1/1

All (1) bond length outliers are listed below:

Mol	Chain	Res	Type	Atoms	Z	Observed(Å)	Ideal(Å)
4	D	900	NAG	O5-C5	4.14	1.52	1.43

All (14) bond angle outliers are listed below:

Mol	Chain	Res	Type	Atoms	Z	Observed(°)	Ideal(°)
4	A	900	NAG	C1-O5-C5	-4.46	106.58	112.25

Continued on next page...

Continued from previous page...

Mol	Chain	Res	Type	Atoms	Z	Observed(°)	Ideal(°)
4	D	900	NAG	O5-C5-C6	-4.43	97.76	107.35
4	D	900	NAG	O4-C4-C5	-2.92	101.49	109.24
4	D	900	NAG	O4-C4-C3	-2.47	104.77	110.34
4	B	900	NAG	C4-C3-C2	-2.23	107.76	111.23
4	D	900	NAG	C4-C3-C2	-2.22	107.77	111.23
4	D	900	NAG	C6-C5-C4	-2.03	108.02	113.02
4	B	900	NAG	O4-C4-C5	2.04	114.65	109.24
4	D	900	NAG	C3-C2-N2	2.11	115.61	110.56
4	A	900	NAG	C3-C2-N2	2.11	115.61	110.56
4	D	900	NAG	O7-C7-N2	2.19	126.33	121.86
4	D	900	NAG	C1-O5-C5	2.28	115.14	112.25
4	A	900	NAG	C3-C4-C5	2.44	114.45	110.20
4	D	900	NAG	C2-N2-C7	8.09	133.43	123.04

There are no chirality outliers.

There are no torsion outliers.

There are no ring outliers.

3 monomers are involved in 6 short contacts:

Mol	Chain	Res	Type	Clashes	Symm-Clashes
4	A	900	NAG	1	0
4	B	900	NAG	1	0
4	D	900	NAG	4	0

5.7 Other polymers [i](#)

There are no such residues in this entry.

5.8 Polymer linkage issues [i](#)

There are no chain breaks in this entry.

6 Fit of model and data

6.1 Protein, DNA and RNA chains

In the following table, the column labelled ‘#RSRZ> 2’ contains the number (and percentage) of RSRZ outliers, followed by percent RSRZ outliers for the chain as percentile scores relative to all X-ray entries and entries of similar resolution. The OWAB column contains the minimum, median, 95th percentile and maximum values of the occupancy-weighted average B-factor per residue. The column labelled ‘Q< 0.9’ lists the number of (and percentage) of residues with an average occupancy less than 0.9.

Mol	Chain	Analysed	<RSRZ>	#RSRZ>2	OWAB(Å ²)	Q<0.9
1	A	369/384 (96%)	0.63	42 (11%) 7 6	28, 54, 130, 203	0
1	B	366/384 (95%)	0.79	47 (12%) 5 5	29, 68, 114, 159	0
1	C	372/384 (96%)	0.99	58 (15%) 3 2	29, 63, 133, 199	0
1	D	367/384 (95%)	0.67	46 (12%) 5 5	30, 67, 103, 124	0
All	All	1474/1536 (95%)	0.77	193 (13%) 5 4	28, 62, 119, 203	0

All (193) RSRZ outliers are listed below:

Mol	Chain	Res	Type	RSRZ
1	C	263	VAL	19.2
1	A	172	GLN	11.2
1	C	265	TRP	10.5
1	C	176	LYS	9.5
1	C	178	LYS	8.7
1	C	177	LYS	8.4
1	A	163	THR	8.2
1	C	264	ASP	7.8
1	C	172	GLN	7.8
1	B	357	GLY	7.7
1	B	220	ILE	7.6
1	B	354	LYS	7.4
1	C	173	ASP	7.3
1	A	375	LEU	7.3
1	B	353	MET	7.1
1	C	261	THR	7.1
1	B	223	ASN	6.7
1	A	167	TYR	6.4
1	C	203	LYS	5.9
1	B	180	ARG	5.8
1	D	258	ARG	5.7

Continued on next page...

Continued from previous page...

Mol	Chain	Res	Type	RSRZ
1	C	174	LEU	5.7
1	C	302	ALA	5.6
1	D	363	TYR	5.4
1	A	180	ARG	5.3
1	B	256	ASP	5.2
1	A	99	THR	5.2
1	C	168	ARG	5.1
1	A	258	ARG	5.1
1	C	164	GLU	5.1
1	C	204	ASN	5.0
1	B	253	ARG	5.0
1	A	171	PHE	5.0
1	B	174	LEU	4.9
1	B	221	ASP	4.9
1	D	259	ASP	4.9
1	C	169	MET	4.8
1	C	206	ILE	4.8
1	B	355	HIS	4.7
1	C	262	ARG	4.6
1	C	205	GLY	4.6
1	B	218	MET	4.6
1	C	180	ARG	4.5
1	C	359	ARG	4.5
1	A	170	LEU	4.5
1	D	267	ARG	4.4
1	B	175	GLU	4.4
1	A	159	ILE	4.4
1	C	258	ARG	4.4
1	D	257	SER	4.4
1	B	360	LYS	4.3
1	C	355	HIS	4.3
1	A	98	ASP	4.3
1	C	170	LEU	4.3
1	D	301	ASN	4.3
1	A	178	LYS	4.2
1	A	259	ASP	4.2
1	B	201	LEU	4.2
1	D	204	ASN	4.1
1	B	179	GLU	4.1
1	B	222	LEU	4.1
1	C	373	ALA	4.1
1	A	169	MET	4.0

Continued on next page...

Continued from previous page...

Mol	Chain	Res	Type	RSRZ
1	B	226	LYS	4.0
1	C	356	ASP	4.0
1	D	358	ILE	4.0
1	A	173	ASP	3.9
1	B	176	LYS	3.9
1	A	301	ASN	3.9
1	C	175	GLU	3.9
1	A	257	SER	3.8
1	C	167	TYR	3.8
1	D	252	TRP	3.8
1	A	177	LYS	3.8
1	C	259	ASP	3.7
1	A	374	ALA	3.7
1	B	266	LYS	3.7
1	C	256	ASP	3.7
1	B	359	ARG	3.6
1	B	356	ASP	3.6
1	C	260	HIS	3.6
1	A	189	GLU	3.6
1	D	135	ARG	3.4
1	C	99	THR	3.4
1	D	367	ASP	3.4
1	A	300	GLY	3.4
1	D	175	GLU	3.4
1	D	137	LEU	3.3
1	B	171	PHE	3.3
1	D	221	ASP	3.3
1	B	178	LYS	3.3
1	C	2	ALA	3.3
1	A	217	PHE	3.3
1	B	358	ILE	3.3
1	C	97	VAL	3.3
1	A	358	ILE	3.2
1	B	139	VAL	3.2
1	D	266	LYS	3.2
1	A	1	GLY	3.2
1	B	229	GLY	3.2
1	D	241	THR	3.2
1	D	226	LYS	3.2
1	A	161	THR	3.1
1	D	134	ASP	3.1
1	D	140	LEU	3.1

Continued on next page...

Continued from previous page...

Mol	Chain	Res	Type	RSRZ
1	D	164	GLU	3.1
1	D	362	GLY	3.1
1	A	266	LYS	3.0
1	B	228	SER	3.0
1	D	163	THR	3.0
1	D	227	GLU	3.0
1	D	357	GLY	3.0
1	C	98	ASP	2.9
1	A	220	ILE	2.9
1	C	163	THR	2.9
1	C	252	TRP	2.9
1	A	166	GLY	2.9
1	D	149	GLU	2.9
1	B	252	TRP	2.9
1	B	137	LEU	2.8
1	D	302	ALA	2.8
1	C	17	GLN	2.8
1	A	162	THR	2.8
1	D	373	ALA	2.8
1	D	224	LYS	2.8
1	A	302	ALA	2.8
1	B	134	ASP	2.8
1	D	201	LEU	2.7
1	D	369	LYS	2.7
1	B	199	VAL	2.7
1	C	357	GLY	2.7
1	B	195	LEU	2.7
1	A	256	ASP	2.7
1	D	250	GLN	2.7
1	C	361	ILE	2.7
1	C	201	LEU	2.7
1	C	353	MET	2.7
1	D	256	ASP	2.6
1	A	254	THR	2.6
1	C	254	THR	2.6
1	B	254	THR	2.6
1	A	158	ASN	2.6
1	D	123	LYS	2.6
1	C	240	TYR	2.5
1	D	178	LYS	2.5
1	D	179	GLU	2.5
1	D	200	LYS	2.5

Continued on next page...

Continued from previous page...

Mol	Chain	Res	Type	RSRZ
1	C	293	ARG	2.5
1	D	296	ILE	2.5
1	B	192	ASN	2.5
1	D	203	LYS	2.5
1	A	16	GLN	2.5
1	B	352	GLU	2.5
1	C	354	LYS	2.4
1	D	139	VAL	2.4
1	B	3	MET	2.4
1	B	210	TYR	2.4
1	C	225	PHE	2.4
1	B	136	GLY	2.3
1	B	224	LYS	2.3
1	C	207	GLY	2.3
1	D	190	ARG	2.3
1	C	247	ARG	2.3
1	B	170	LEU	2.3
1	C	165	GLU	2.2
1	C	280	LYS	2.2
1	A	215	LEU	2.2
1	C	257	SER	2.2
1	B	267	ARG	2.2
1	C	267	ARG	2.2
1	C	358	ILE	2.2
1	A	267	ARG	2.1
1	C	253	ARG	2.1
1	B	219	ASP	2.1
1	B	258	ARG	2.1
1	C	171	PHE	2.1
1	B	257	SER	2.1
1	A	133	ALA	2.1
1	A	221	ASP	2.1
1	D	356	ASP	2.1
1	A	206	ILE	2.1
1	C	299	ARG	2.1
1	D	136	GLY	2.1
1	D	248	ILE	2.1
1	A	174	LEU	2.1
1	A	201	LEU	2.1
1	B	181	LEU	2.1
1	D	300	GLY	2.0
1	B	16	GLN	2.0

Continued on next page...

Continued from previous page...

Mol	Chain	Res	Type	RSRZ
1	D	366	GLU	2.0
1	A	135	ARG	2.0
1	C	296	ILE	2.0
1	D	293	ARG	2.0

6.2 Non-standard residues in protein, DNA, RNA chains [i](#)

There are no non-standard protein/DNA/RNA residues in this entry.

6.3 Carbohydrates [i](#)

In the following table, the Atoms column lists the number of modelled atoms in the group and the number defined in the chemical component dictionary. LLDF column lists the quality of electron density of the group with respect to its neighbouring residues in protein, DNA or RNA chains. The B-factors column lists the minimum, median, 95th percentile and maximum values of B factors of atoms in the group. The column labelled 'Q< 0.9' lists the number of atoms with occupancy less than 0.9.

Mol	Type	Chain	Res	Atoms	RSCC	RSR	LLDF	B-factors(Å ²)	Q<0.9
5	MAN	C	805	11/12	0.48	0.62	5.32	224,224,225,225	0
3	NAG	C	600	14/15	0.82	0.33	2.83	122,135,144,146	0
5	NAG	C	800	14/15	0.86	0.27	2.74	127,133,139,143	0
3	NAG	D	700	14/15	0.78	0.31	1.67	150,160,163,167	0
2	NAG	B	600	14/15	0.83	0.27	1.50	130,140,144,154	0
2	NAG	D	600	14/15	0.87	0.29	1.26	109,119,125,127	0
2	NAG	A	600	14/15	0.83	0.23	0.95	125,139,144,151	0
3	NAG	C	700	14/15	0.60	0.30	0.80	144,150,157,159	0
3	NAG	A	700	14/15	0.74	0.23	0.78	129,137,145,150	0
3	NAG	A	800	14/15	0.89	0.23	0.22	129,137,145,153	0
3	NAG	C	701	14/15	0.79	0.35	-0.01	162,164,165,166	0
3	NAG	A	801	14/15	0.82	0.22	-	162,166,168,169	0
5	NAG	C	801	14/15	0.74	0.23	-	148,152,156,166	0
2	BMA	D	602	11/12	0.85	0.17	-	136,138,140,142	0
3	NAG	A	701	14/15	0.64	0.30	-	155,158,160,160	0
3	NAG	D	701	14/15	0.51	0.42	-	160,173,175,176	0
3	NAG	B	801	14/15	0.77	0.17	-	168,172,174,174	0
3	NAG	D	800	14/15	0.85	0.16	-	146,155,160,168	0
2	BMA	B	602	11/12	0.60	0.32	-	184,186,187,188	0
2	BMA	A	602	11/12	0.55	0.33	-	180,183,184,184	0
5	MAN	C	804	11/12	0.57	0.65	-	220,222,223,223	0
5	BMA	C	802	11/12	0.77	0.21	-	175,181,192,200	0

Continued on next page...

Continued from previous page...

Mol	Type	Chain	Res	Atoms	RSCC	RSR	LLDF	B-factors(\AA^2)	Q<0.9
5	MAN	C	806	11/12	0.76	0.21	-	185,186,187,187	0
3	NAG	B	800	14/15	0.84	0.20	-	139,150,154,161	0
3	NAG	B	701	14/15	0.62	0.48	-	102,175,193,194	0
2	NAG	A	601	14/15	0.64	0.29	-	161,166,171,177	0
2	NAG	B	601	14/15	0.79	0.23	-	163,167,174,179	0
5	MAN	C	803	11/12	0.34	0.31	-	206,210,211,216	0
2	NAG	D	601	14/15	0.84	0.24	-	123,126,132,132	0
3	NAG	D	801	14/15	0.73	0.26	-	175,180,184,184	0
3	NAG	C	601	14/15	0.84	0.25	-	152,156,160,161	0
3	NAG	B	700	14/15	0.71	0.39	-	129,143,158,168	0

6.4 Ligands [i](#)

In the following table, the Atoms column lists the number of modelled atoms in the group and the number defined in the chemical component dictionary. LLDF column lists the quality of electron density of the group with respect to its neighbouring residues in protein, DNA or RNA chains. The B-factors column lists the minimum, median, 95th percentile and maximum values of B factors of atoms in the group. The column labelled 'Q< 0.9' lists the number of atoms with occupancy less than 0.9.

Mol	Type	Chain	Res	Atoms	RSCC	RSR	LLDF	B-factors(\AA^2)	Q<0.9
4	NAG	D	900	14/15	0.70	0.47	3.45	159,166,173,173	0
4	NAG	A	900	14/15	0.80	0.25	2.36	152,159,164,164	0
4	NAG	B	900	14/15	0.80	0.29	-0.14	156,165,172,172	0

6.5 Other polymers [i](#)

There are no such residues in this entry.