



Full wwPDB X-ray Structure Validation Report ⓘ

Feb 1, 2016 – 01:04 PM GMT

PDB ID : 3SSN
Title : MycE Methyltransferase from the Mycinamycin Biosynthetic Pathway in Complex with Mg, SAH, and Mycinamycin VI
Authors : Akey, D.L.; Smith, J.L.
Deposited on : 2011-07-08
Resolution : 2.39 Å(reported)

This is a Full wwPDB X-ray Structure Validation Report for a publicly released PDB entry.
We welcome your comments at validation@mail.wwpdb.org
A user guide is available at
<http://wwpdb.org/validation/2016/XrayValidationReportHelp>
with specific help available everywhere you see the ⓘ symbol.

The following versions of software and data (see [references ⓘ](#)) were used in the production of this report:

MolProbity : 4.02b-467
Mogul : 1.7 (RC4), CSD as536be (2015)
Xtriage (Phenix) : 1.9-1692
EDS : rb-20026688
Percentile statistics : 20151230.v01 (using entries in the PDB archive December 30th 2015)
Refmac : 5.8.0135
CCP4 : 6.5.0
Ideal geometry (proteins) : Engh & Huber (2001)
Ideal geometry (DNA, RNA) : Parkinson et al. (1996)
Validation Pipeline (wwPDB-VP) : trunk26865

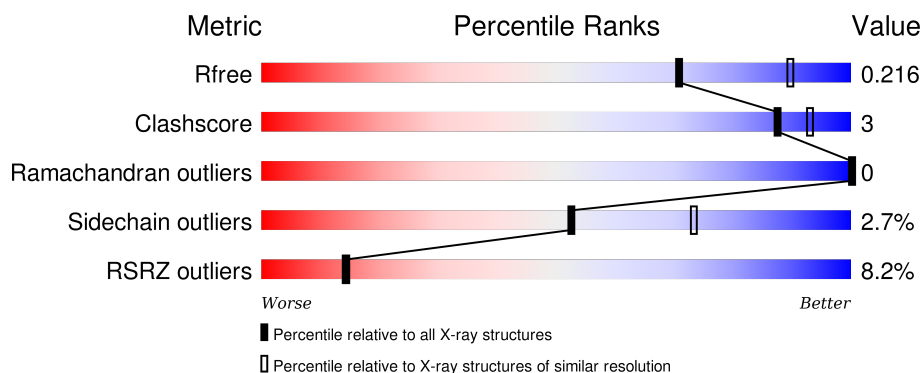
1 Overall quality at a glance

The following experimental techniques were used to determine the structure:

X-RAY DIFFRACTION

The reported resolution of this entry is 2.39 Å.

Percentile scores (ranging between 0-100) for global validation metrics of the entry are shown in the following graphic. The table shows the number of entries on which the scores are based.



Metric	Whole archive (#Entries)	Similar resolution (#Entries, resolution range(Å))
R_{free}	91344	2919 (2.40-2.40)
Clashscore	102246	3407 (2.40-2.40)
Ramachandran outliers	100387	3351 (2.40-2.40)
Sidechain outliers	100360	3352 (2.40-2.40)
RSRZ outliers	91569	2928 (2.40-2.40)

The table below summarises the geometric issues observed across the polymeric chains and their fit to the electron density. The red, orange, yellow and green segments on the lower bar indicate the fraction of residues that contain outliers for ≥ 3 , 2, 1 and 0 types of geometric quality criteria. A grey segment represents the fraction of residues that are not modelled. The numeric value for each fraction is indicated below the corresponding segment, with a dot representing fractions $\leq 5\%$. The upper red bar (where present) indicates the fraction of residues that have poor fit to the electron density. The numeric value is given above the bar.

Mol	Chain	Length	Quality of chain
1	A	419	<div> <div>6%</div> <div>81% 10% 8%</div> </div>
1	B	419	<div> <div>8%</div> <div>78% 5% 16%</div> </div>
1	C	419	<div> <div>6%</div> <div>81% 5% 13%</div> </div>
1	D	419	<div> <div>10%</div> <div>87% 7% 6%</div> </div>

The following table lists non-polymeric compounds, carbohydrate monomers and non-standard

residues in protein, DNA, RNA chains that are outliers for geometric or electron-density-fit criteria:

Mol	Type	Chain	Res	Chirality	Geometry	Clashes	Electron density
2	MG	D	501	-	-	-	X
4	MVI	A	701	-	-	-	X
5	DMS	A	400	-	-	-	X
6	GOL	D	400	-	-	-	X

2 Entry composition

There are 7 unique types of molecules in this entry. The entry contains 12616 atoms, of which 0 are hydrogens and 0 are deuteriums.

In the tables below, the ZeroOcc column contains the number of atoms modelled with zero occupancy, the AltConf column contains the number of residues with at least one atom in alternate conformation and the Trace column contains the number of residues modelled with at most 2 atoms.

- Molecule 1 is a protein called Methyltransferase.

Mol	Chain	Residues	Atoms					ZeroOcc	AltConf	Trace
1	A	386	Total	C	N	O	S	0	0	0
			3077	1955	543	571	8			
1	B	350	Total	C	N	O	S	0	0	0
			2774	1748	496	524	6			
1	C	366	Total	C	N	O	S	0	0	0
			2924	1860	518	538	8			
1	D	393	Total	C	N	O	S	0	0	0
			3126	1982	554	582	8			

There are 80 discrepancies between the modelled and reference sequences:

Chain	Residue	Modelled	Actual	Comment	Reference
A	-19	MET	-	EXPRESSION TAG	UNP Q83WF2
A	-18	GLY	-	EXPRESSION TAG	UNP Q83WF2
A	-17	SER	-	EXPRESSION TAG	UNP Q83WF2
A	-16	SER	-	EXPRESSION TAG	UNP Q83WF2
A	-15	HIS	-	EXPRESSION TAG	UNP Q83WF2
A	-14	HIS	-	EXPRESSION TAG	UNP Q83WF2
A	-13	HIS	-	EXPRESSION TAG	UNP Q83WF2
A	-12	HIS	-	EXPRESSION TAG	UNP Q83WF2
A	-11	HIS	-	EXPRESSION TAG	UNP Q83WF2
A	-10	HIS	-	EXPRESSION TAG	UNP Q83WF2
A	-9	SER	-	EXPRESSION TAG	UNP Q83WF2
A	-8	SER	-	EXPRESSION TAG	UNP Q83WF2
A	-7	GLY	-	EXPRESSION TAG	UNP Q83WF2
A	-6	LEU	-	EXPRESSION TAG	UNP Q83WF2
A	-5	VAL	-	EXPRESSION TAG	UNP Q83WF2
A	-4	PRO	-	EXPRESSION TAG	UNP Q83WF2
A	-3	ARG	-	EXPRESSION TAG	UNP Q83WF2
A	-2	GLY	-	EXPRESSION TAG	UNP Q83WF2
A	-1	SER	-	EXPRESSION TAG	UNP Q83WF2
A	0	HIS	-	EXPRESSION TAG	UNP Q83WF2
B	-19	MET	-	EXPRESSION TAG	UNP Q83WF2

Continued on next page...

Continued from previous page...

Chain	Residue	Modelled	Actual	Comment	Reference
B	-18	GLY	-	EXPRESSION TAG	UNP Q83WF2
B	-17	SER	-	EXPRESSION TAG	UNP Q83WF2
B	-16	SER	-	EXPRESSION TAG	UNP Q83WF2
B	-15	HIS	-	EXPRESSION TAG	UNP Q83WF2
B	-14	HIS	-	EXPRESSION TAG	UNP Q83WF2
B	-13	HIS	-	EXPRESSION TAG	UNP Q83WF2
B	-12	HIS	-	EXPRESSION TAG	UNP Q83WF2
B	-11	HIS	-	EXPRESSION TAG	UNP Q83WF2
B	-10	HIS	-	EXPRESSION TAG	UNP Q83WF2
B	-9	SER	-	EXPRESSION TAG	UNP Q83WF2
B	-8	SER	-	EXPRESSION TAG	UNP Q83WF2
B	-7	GLY	-	EXPRESSION TAG	UNP Q83WF2
B	-6	LEU	-	EXPRESSION TAG	UNP Q83WF2
B	-5	VAL	-	EXPRESSION TAG	UNP Q83WF2
B	-4	PRO	-	EXPRESSION TAG	UNP Q83WF2
B	-3	ARG	-	EXPRESSION TAG	UNP Q83WF2
B	-2	GLY	-	EXPRESSION TAG	UNP Q83WF2
B	-1	SER	-	EXPRESSION TAG	UNP Q83WF2
B	0	HIS	-	EXPRESSION TAG	UNP Q83WF2
C	-19	MET	-	EXPRESSION TAG	UNP Q83WF2
C	-18	GLY	-	EXPRESSION TAG	UNP Q83WF2
C	-17	SER	-	EXPRESSION TAG	UNP Q83WF2
C	-16	SER	-	EXPRESSION TAG	UNP Q83WF2
C	-15	HIS	-	EXPRESSION TAG	UNP Q83WF2
C	-14	HIS	-	EXPRESSION TAG	UNP Q83WF2
C	-13	HIS	-	EXPRESSION TAG	UNP Q83WF2
C	-12	HIS	-	EXPRESSION TAG	UNP Q83WF2
C	-11	HIS	-	EXPRESSION TAG	UNP Q83WF2
C	-10	HIS	-	EXPRESSION TAG	UNP Q83WF2
C	-9	SER	-	EXPRESSION TAG	UNP Q83WF2
C	-8	SER	-	EXPRESSION TAG	UNP Q83WF2
C	-7	GLY	-	EXPRESSION TAG	UNP Q83WF2
C	-6	LEU	-	EXPRESSION TAG	UNP Q83WF2
C	-5	VAL	-	EXPRESSION TAG	UNP Q83WF2
C	-4	PRO	-	EXPRESSION TAG	UNP Q83WF2
C	-3	ARG	-	EXPRESSION TAG	UNP Q83WF2
C	-2	GLY	-	EXPRESSION TAG	UNP Q83WF2
C	-1	SER	-	EXPRESSION TAG	UNP Q83WF2
C	0	HIS	-	EXPRESSION TAG	UNP Q83WF2
D	-19	MET	-	EXPRESSION TAG	UNP Q83WF2
D	-18	GLY	-	EXPRESSION TAG	UNP Q83WF2
D	-17	SER	-	EXPRESSION TAG	UNP Q83WF2

Continued on next page...

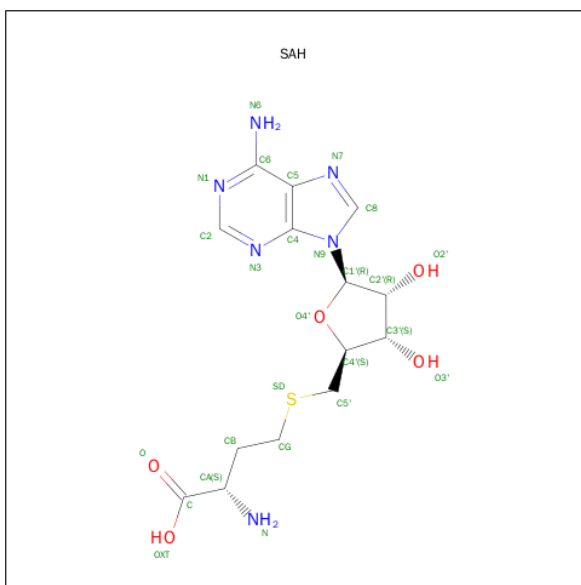
Continued from previous page...

Chain	Residue	Modelled	Actual	Comment	Reference
D	-16	SER	-	EXPRESSION TAG	UNP Q83WF2
D	-15	HIS	-	EXPRESSION TAG	UNP Q83WF2
D	-14	HIS	-	EXPRESSION TAG	UNP Q83WF2
D	-13	HIS	-	EXPRESSION TAG	UNP Q83WF2
D	-12	HIS	-	EXPRESSION TAG	UNP Q83WF2
D	-11	HIS	-	EXPRESSION TAG	UNP Q83WF2
D	-10	HIS	-	EXPRESSION TAG	UNP Q83WF2
D	-9	SER	-	EXPRESSION TAG	UNP Q83WF2
D	-8	SER	-	EXPRESSION TAG	UNP Q83WF2
D	-7	GLY	-	EXPRESSION TAG	UNP Q83WF2
D	-6	LEU	-	EXPRESSION TAG	UNP Q83WF2
D	-5	VAL	-	EXPRESSION TAG	UNP Q83WF2
D	-4	PRO	-	EXPRESSION TAG	UNP Q83WF2
D	-3	ARG	-	EXPRESSION TAG	UNP Q83WF2
D	-2	GLY	-	EXPRESSION TAG	UNP Q83WF2
D	-1	SER	-	EXPRESSION TAG	UNP Q83WF2
D	0	HIS	-	EXPRESSION TAG	UNP Q83WF2

- Molecule 2 is MAGNESIUM ION (three-letter code: MG) (formula: Mg).

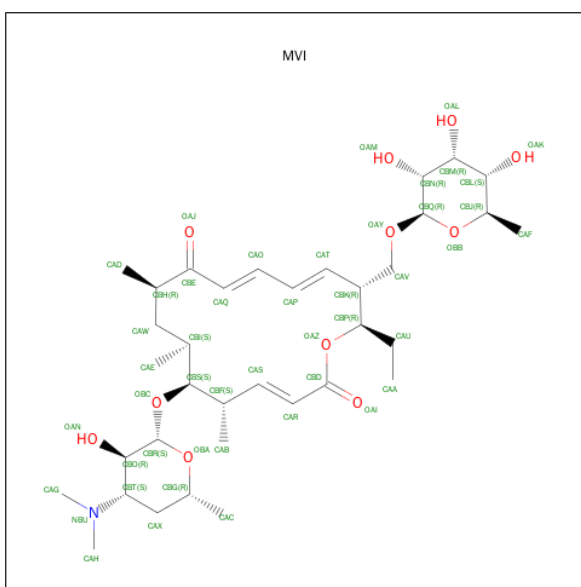
Mol	Chain	Residues	Atoms	ZeroOcc	AltConf
2	A	1	Total Mg 1 1	0	0
2	D	1	Total Mg 1 1	0	0
2	C	1	Total Mg 1 1	0	0

- Molecule 3 is S-ADENOSYL-L-HOMOCYSTEINE (three-letter code: SAH) (formula: C₁₄H₂₀N₆O₅S).



Mol	Chain	Residues	Atoms					ZeroOcc	AltConf
3	A	1	Total 26	C 14	N 6	O 5	S 1	0	0
3	C	1	Total 26	C 14	N 6	O 5	S 1	0	0
3	D	1	Total 26	C 14	N 6	O 5	S 1	0	0

- Molecule 4 is MYCINAMICIN VI (three-letter code: MVI) (formula: $C_{35}H_{57}NO_{11}$).



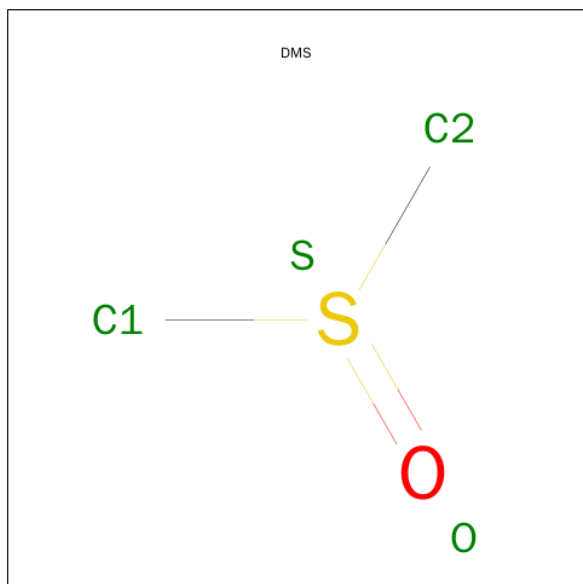
Mol	Chain	Residues	Atoms				ZeroOcc	AltConf
4	A	1	Total	C	N	O	0	0
			47	35	1	11		

Continued on next page...

Continued from previous page...

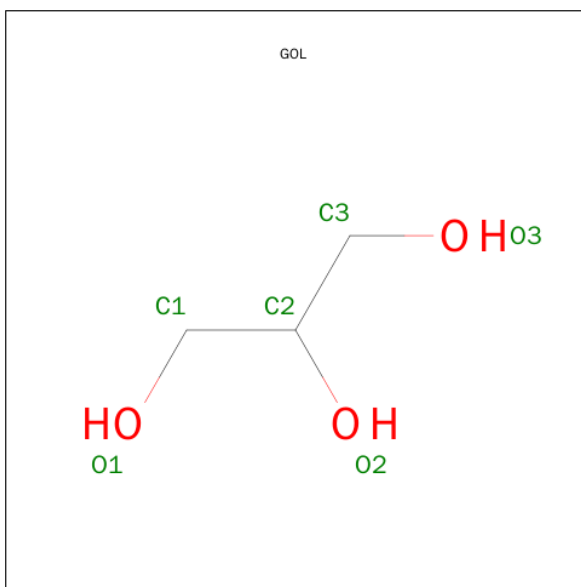
Mol	Chain	Residues	Atoms				ZeroOcc	AltConf
4	C	1	Total	C	N	O	0	0
			47	35	1	11		

- Molecule 5 is DIMETHYL SULFOXIDE (three-letter code: DMS) (formula: C_2H_6OS).



Mol	Chain	Residues	Atoms				ZeroOcc	AltConf
5	A	1	Total	C	O	S	0	0
			4	2	1	1		
5	A	1	Total	C	O	S	0	0
			4	2	1	1		
5	C	1	Total	C	O	S	0	0
			4	2	1	1		

- Molecule 6 is GLYCEROL (three-letter code: GOL) (formula: $C_3H_8O_3$).



Mol	Chain	Residues	Atoms			ZeroOcc	AltConf
6	D	1	Total	C	O	0	0
			6	3	3		

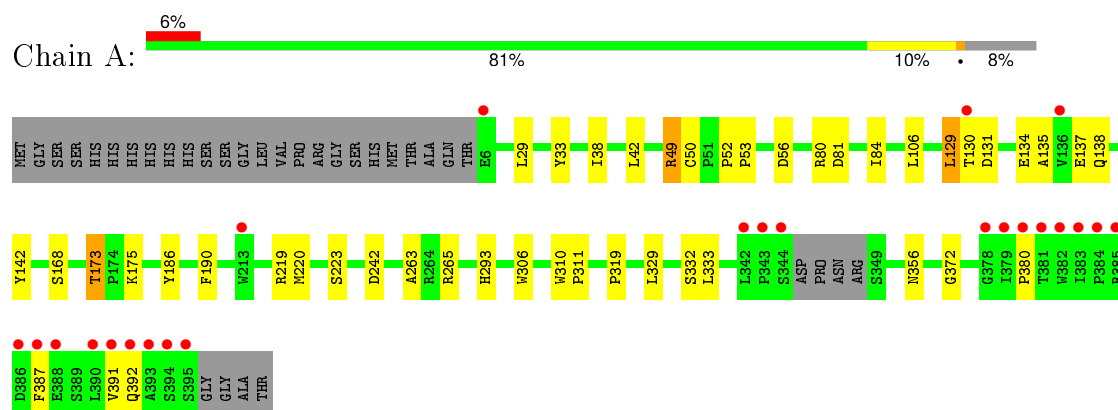
- Molecule 7 is water.

Mol	Chain	Residues	Atoms		ZeroOcc	AltConf
7	A	166	Total	O	0	0
			166	166		
7	B	109	Total	O	0	0
			109	109		
7	C	130	Total	O	0	0
			130	130		
7	D	117	Total	O	0	0
			117	117		

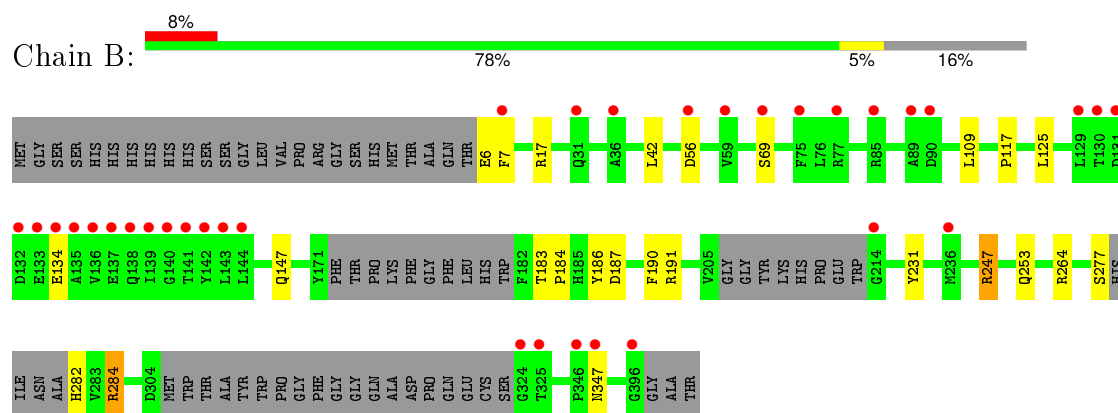
3 Residue-property plots

These plots are drawn for all protein, RNA and DNA chains in the entry. The first graphic for a chain summarises the proportions of errors displayed in the second graphic. The second graphic shows the sequence view annotated by issues in geometry and electron density. Residues are color-coded according to the number of geometric quality criteria for which they contain at least one outlier: green = 0, yellow = 1, orange = 2 and red = 3 or more. A red dot above a residue indicates a poor fit to the electron density ($RSRZ > 2$). Stretches of 2 or more consecutive residues without any outlier are shown as a green connector. Residues present in the sample, but not in the model, are shown in grey.

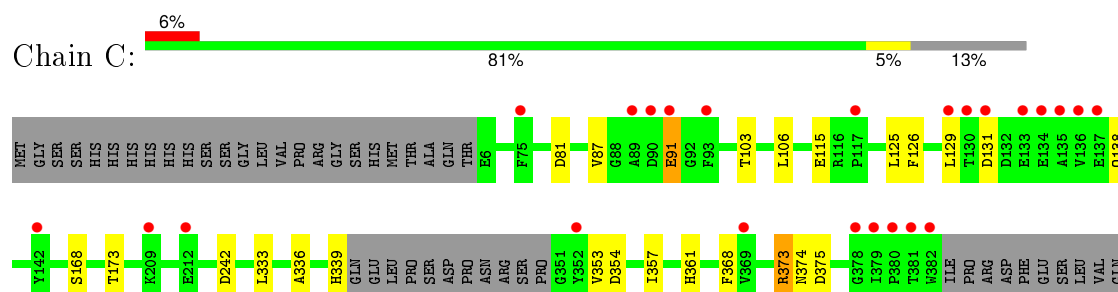
• Molecule 1: Methyltransferase



• Molecule 1: Methyltransferase

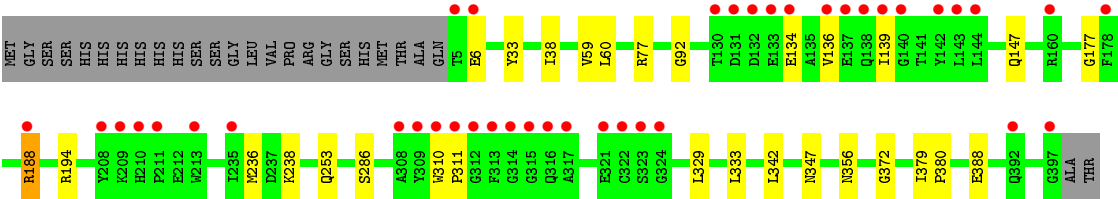
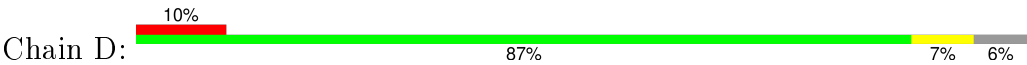


• Molecule 1: Methyltransferase



ALA
SER
SER
GLY
GLY
ALA
THR

● Molecule 1: Methyltransferase



4 Data and refinement statistics

Property	Value	Source
Space group	P 1 21 1	Depositor
Cell constants a, b, c, α , β , γ	73.11Å 142.11Å 83.86Å 90.00° 105.61° 90.00°	Depositor
Resolution (Å)	46.70 – 2.39 46.71 – 2.39	Depositor EDS
% Data completeness (in resolution range)	98.7 (46.70-2.39) 98.7 (46.71-2.39)	Depositor EDS
R_{merge}	0.08	Depositor
R_{sym}	(Not available)	Depositor
$\langle I/\sigma(I) \rangle$ ¹	2.29 (at 2.39Å)	Xtriage
Refinement program	REFMAC 5.5.0102	Depositor
R, R_{free}	0.165 , 0.218 0.164 , 0.216	Depositor DCC
R_{free} test set	3265 reflections (5.36%)	DCC
Wilson B-factor (Å ²)	42.1	Xtriage
Anisotropy	0.219	Xtriage
Bulk solvent k_{sol} (e/Å ³), B_{sol} (Å ²)	0.35 , 46.2	EDS
Estimated twinning fraction	No twinning to report.	Xtriage
L-test for twinning ²	$\langle L \rangle = 0.50$, $\langle L^2 \rangle = 0.34$	Xtriage
Outliers	0 of 64194 reflections	Xtriage
F_o, F_c correlation	0.96	EDS
Total number of atoms	12616	wwPDB-VP
Average B, all atoms (Å ²)	50.0	wwPDB-VP

Xtriage's analysis on translational NCS is as follows: *The largest off-origin peak in the Patterson function is 4.19% of the height of the origin peak. No significant pseudotranslation is detected.*

¹Intensities estimated from amplitudes.

²Theoretical values of $\langle |L| \rangle$, $\langle L^2 \rangle$ for acentric reflections are 0.5, 0.375 respectively for untwinned datasets, and 0.333, 0.2 for perfectly twinned datasets.

5 Model quality [i](#)

5.1 Standard geometry [i](#)

Bond lengths and bond angles in the following residue types are not validated in this section: GOL, MG, SAH, DMS, MVI

The Z score for a bond length (or angle) is the number of standard deviations the observed value is removed from the expected value. A bond length (or angle) with $|Z| > 5$ is considered an outlier worth inspection. RMSZ is the root-mean-square of all Z scores of the bond lengths (or angles).

Mol	Chain	Bond lengths		Bond angles	
		RMSZ	$\# Z > 5$	RMSZ	$\# Z > 5$
1	A	0.45	0/3159	0.56	0/4287
1	B	0.41	0/2833	0.55	0/3835
1	C	0.44	0/3002	0.55	0/4072
1	D	0.43	0/3210	0.55	0/4358
All	All	0.43	0/12204	0.55	0/16552

There are no bond length outliers.

There are no bond angle outliers.

There are no chirality outliers.

There are no planarity outliers.

5.2 Too-close contacts [i](#)

In the following table, the Non-H and H(model) columns list the number of non-hydrogen atoms and hydrogen atoms in the chain respectively. The H(added) column lists the number of hydrogen atoms added and optimized by MolProbity. The Clashes column lists the number of clashes within the asymmetric unit, whereas Symm-Clashes lists symmetry related clashes.

Mol	Chain	Non-H	H(model)	H(added)	Clashes	Symm-Clashes
1	A	3077	0	2969	27	0
1	B	2774	0	2704	12	0
1	C	2924	0	2822	11	0
1	D	3126	0	3013	17	0
2	A	1	0	0	0	0
2	C	1	0	0	0	0
2	D	1	0	0	0	0
3	A	26	0	19	0	0
3	C	26	0	19	0	0

Continued on next page...

Continued from previous page...

Mol	Chain	Non-H	H(model)	H(added)	Clashes	Symm-Clashes
3	D	26	0	19	0	0
4	A	47	0	56	1	0
4	C	47	0	56	0	0
5	A	8	0	12	1	0
5	C	4	0	6	0	0
6	D	6	0	8	1	0
7	A	166	0	0	2	0
7	B	109	0	0	1	0
7	C	130	0	0	0	0
7	D	117	0	0	2	0
All	All	12616	0	11703	61	0

The all-atom clashscore is defined as the number of clashes found per 1000 atoms (including hydrogen atoms). The all-atom clashscore for this structure is 3.

All (61) close contacts within the same asymmetric unit are listed below, sorted by their clash magnitude.

Atom-1	Atom-2	Interatomic distance (Å)	Clash overlap (Å)
1:A:173:THR:HG21	1:A:220:MET:HE3	1.59	0.84
1:A:319:PRO:HG3	1:D:342:LEU:HD21	1.80	0.64
1:A:219:ARG:HD2	7:A:462:HOH:O	1.97	0.64
1:B:231:TYR:HD2	1:B:247:ARG:HG2	1.65	0.61
1:A:173:THR:HG21	1:A:220:MET:CE	2.31	0.60
1:D:33:TYR:HB2	1:D:38:ILE:HD11	1.84	0.60
1:C:125:LEU:HD11	1:D:380:PRO:HG3	1.84	0.60
1:A:49:ARG:HG2	5:A:401:DMS:S	2.44	0.56
1:A:129:LEU:HD23	1:A:135:ALA:HA	1.87	0.56
1:B:147:GLN:HG3	1:D:177:GLY:HA3	1.88	0.54
1:D:6:GLU:HB2	7:D:481:HOH:O	2.09	0.52
1:A:50:CYS:HB3	1:A:84:ILE:HD12	1.91	0.52
1:D:77:ARG:HD2	6:D:400:GOL:H31	1.93	0.51
1:C:333:LEU:HD22	1:C:357:ILE:HD12	1.93	0.51
1:B:264:ARG:NH2	7:B:459:HOH:O	2.44	0.50
1:C:353:VAL:HG13	1:C:357:ILE:HD11	1.94	0.50
1:A:265:ARG:HD2	7:A:521:HOH:O	2.12	0.50
1:C:361:HIS:HB2	1:C:368:PHE:HB2	1.93	0.50
1:A:33:TYR:HB2	1:A:38:ILE:HD11	1.94	0.49
1:C:103:THR:HA	1:C:106:LEU:HD12	1.95	0.48
1:B:186:TYR:O	1:B:190:PHE:HB2	2.14	0.47
1:A:173:THR:CG2	1:A:220:MET:CE	2.92	0.47
1:A:173:THR:OG1	1:A:175:LYS:HG2	2.14	0.47

Continued on next page...

Continued from previous page...

Atom-1	Atom-2	Interatomic distance (Å)	Clash overlap (Å)
1:C:373:ARG:NH2	1:C:375:ASP:OD1	2.47	0.47
1:B:117:PRO:HG3	1:D:188:ARG:CZ	2.45	0.46
1:A:80:ARG:O	1:A:81:ASP:HB2	2.15	0.46
1:B:183:THR:N	1:B:184:PRO:CD	2.77	0.46
1:D:253:GLN:HG3	1:D:286:SER:OG	2.16	0.46
1:D:236:MET:HB2	1:D:238:LYS:HE2	1.98	0.46
1:C:126:PHE:HB3	1:C:129:LEU:HD22	1.98	0.45
1:D:388:GLU:H	1:D:388:GLU:CD	2.20	0.45
1:C:87:VAL:HB	1:C:91:GLU:HG3	1.98	0.45
1:A:387:PHE:O	1:A:391:VAL:HG23	2.16	0.45
1:A:310:TRP:HA	1:A:311:PRO:HD3	1.86	0.45
1:D:329:LEU:O	1:D:333:LEU:HG	2.16	0.44
1:C:336:ALA:HB1	1:C:354:ASP:HA	1.99	0.44
1:A:134:GLU:O	1:A:137:GLU:HG2	2.18	0.44
1:D:136:VAL:HA	1:D:139:ILE:HD12	2.00	0.44
1:D:60:LEU:HD13	1:D:92:GLY:HA3	2.01	0.43
1:A:29:LEU:HD23	1:A:29:LEU:C	2.40	0.42
1:A:306:TRP:CD2	1:D:379:ILE:HG13	2.55	0.42
1:D:310:TRP:HA	1:D:311:PRO:HD3	1.84	0.42
1:A:80:ARG:NH1	1:C:81:ASP:OD2	2.50	0.42
1:D:194:ARG:HD3	7:D:439:HOH:O	2.19	0.42
1:B:6:GLU:HG3	1:B:7:PHE:CD1	2.55	0.42
1:A:50:CYS:CB	1:A:84:ILE:HD12	2.49	0.41
1:A:138:GLN:HG3	1:A:142:TYR:HD2	1.84	0.41
1:D:356:ASN:HA	1:D:372:GLY:O	2.20	0.41
1:A:186:TYR:O	1:A:190:PHE:HB2	2.20	0.41
4:A:701:MVI:CAP	4:A:701:MVI:CBD	2.99	0.41
1:A:329:LEU:O	1:A:333:LEU:HG	2.21	0.41
1:B:231:TYR:CD2	1:B:247:ARG:HG2	2.50	0.41
1:A:42:LEU:HD21	1:A:106:LEU:HD23	2.02	0.41
1:B:284:ARG:H	1:B:284:ARG:HG2	1.73	0.41
1:A:380:PRO:HB3	1:B:125:LEU:HD11	2.03	0.41
1:A:52:PRO:HA	1:A:53:PRO:HD3	1.77	0.41
1:C:339:HIS:CE1	1:C:374:ASN:ND2	2.89	0.40
1:B:187:ASP:OD1	1:B:191:ARG:HD3	2.21	0.40
1:A:263:ALA:HB1	1:A:293:HIS:CG	2.57	0.40
1:A:356:ASN:HA	1:A:372:GLY:O	2.22	0.40
1:B:42:LEU:HD22	1:B:109:LEU:HD12	2.04	0.40

There are no symmetry-related clashes.

5.3 Torsion angles

5.3.1 Protein backbone

In the following table, the Percentiles column shows the percent Ramachandran outliers of the chain as a percentile score with respect to all X-ray entries followed by that with respect to entries of similar resolution.

The Analysed column shows the number of residues for which the backbone conformation was analysed, and the total number of residues.

Mol	Chain	Analysed	Favoured	Allowed	Outliers	Percentiles	
1	A	382/419 (91%)	372 (97%)	10 (3%)	0	100	100
1	B	340/419 (81%)	330 (97%)	10 (3%)	0	100	100
1	C	362/419 (86%)	353 (98%)	9 (2%)	0	100	100
1	D	391/419 (93%)	378 (97%)	13 (3%)	0	100	100
All	All	1475/1676 (88%)	1433 (97%)	42 (3%)	0	100	100

There are no Ramachandran outliers to report.

5.3.2 Protein sidechains

In the following table, the Percentiles column shows the percent sidechain outliers of the chain as a percentile score with respect to all X-ray entries followed by that with respect to entries of similar resolution.

The Analysed column shows the number of residues for which the sidechain conformation was analysed, and the total number of residues.

Mol	Chain	Analysed	Rotameric	Outliers	Percentiles	
1	A	327/353 (93%)	316 (97%)	11 (3%)	44	65
1	B	299/353 (85%)	289 (97%)	10 (3%)	45	66
1	C	308/353 (87%)	300 (97%)	8 (3%)	54	74
1	D	332/353 (94%)	327 (98%)	5 (2%)	72	87
All	All	1266/1412 (90%)	1232 (97%)	34 (3%)	52	73

All (34) residues with a non-rotameric sidechain are listed below:

Mol	Chain	Res	Type
1	A	49	ARG
1	A	56	ASP

Continued on next page...

Continued from previous page...

Mol	Chain	Res	Type
1	A	129	LEU
1	A	130	THR
1	A	131	ASP
1	A	168	SER
1	A	173	THR
1	A	223	SER
1	A	242	ASP
1	A	332	SER
1	A	392	GLN
1	B	17	ARG
1	B	56	ASP
1	B	69	SER
1	B	134	GLU
1	B	247	ARG
1	B	253	GLN
1	B	277	SER
1	B	282	HIS
1	B	284	ARG
1	B	347	ASN
1	C	91	GLU
1	C	115	GLU
1	C	131	ASP
1	C	138	GLN
1	C	168	SER
1	C	173	THR
1	C	242	ASP
1	C	373	ARG
1	D	59	VAL
1	D	134	GLU
1	D	147	GLN
1	D	188	ARG
1	D	347	ASN

Some sidechains can be flipped to improve hydrogen bonding and reduce clashes. All (3) such sidechains are listed below:

Mol	Chain	Res	Type
1	B	282	HIS
1	C	339	HIS
1	D	74	HIS

5.3.3 RNA ⓘ

There are no RNA molecules in this entry.

5.4 Non-standard residues in protein, DNA, RNA chains ⓘ

There are no non-standard protein/DNA/RNA residues in this entry.

5.5 Carbohydrates ⓘ

There are no carbohydrates in this entry.

5.6 Ligand geometry ⓘ

Of 12 ligands modelled in this entry, 3 are monoatomic - leaving 9 for Mogul analysis.

In the following table, the Counts columns list the number of bonds (or angles) for which Mogul statistics could be retrieved, the number of bonds (or angles) that are observed in the model and the number of bonds (or angles) that are defined in the chemical component dictionary. The Link column lists molecule types, if any, to which the group is linked. The Z score for a bond length (or angle) is the number of standard deviations the observed value is removed from the expected value. A bond length (or angle) with $|Z| > 2$ is considered an outlier worth inspection. RMSZ is the root-mean-square of all Z scores of the bond lengths (or angles).

Mol	Type	Chain	Res	Link	Bond lengths			Bond angles		
					Counts	RMSZ	# $ Z > 2$	Counts	RMSZ	# $ Z > 2$
5	DMS	A	400	-	3,3,3	2.61	1 (33%)	3,3,3	0.41	0
5	DMS	A	401	-	3,3,3	2.63	1 (33%)	3,3,3	0.59	0
3	SAH	A	601	-	20,28,28	1.08	2 (10%)	19,40,40	2.24	4 (21%)
4	MVI	A	701	2	48,49,49	1.27	3 (6%)	56,69,69	1.31	6 (10%)
5	DMS	C	400	-	3,3,3	2.59	1 (33%)	3,3,3	0.51	0
3	SAH	C	601	-	20,28,28	1.14	2 (10%)	19,40,40	1.91	3 (15%)
4	MVI	C	701	2	48,49,49	1.29	3 (6%)	56,69,69	1.28	7 (12%)
6	GOL	D	400	-	5,5,5	0.37	0	5,5,5	0.27	0
3	SAH	D	601	-	20,28,28	1.18	2 (10%)	19,40,40	2.05	3 (15%)

In the following table, the Chirals column lists the number of chiral outliers, the number of chiral centers analysed, the number of these observed in the model and the number defined in the chemical component dictionary. Similar counts are reported in the Torsion and Rings columns. '-' means no outliers of that kind were identified.

Mol	Type	Chain	Res	Link	Chirals	Torsions	Rings
5	DMS	A	400	-	-	0/0/0/0	0/0/0/0
5	DMS	A	401	-	-	0/0/0/0	0/0/0/0
3	SAH	A	601	-	-	0/7/31/31	0/3/3/3
4	MVI	A	701	2	-	0/51/87/87	0/2/3/3
5	DMS	C	400	-	-	0/0/0/0	0/0/0/0
3	SAH	C	601	-	-	0/7/31/31	0/3/3/3
4	MVI	C	701	2	-	0/51/87/87	0/2/3/3
6	GOL	D	400	-	-	0/4/4/4	0/0/0/0
3	SAH	D	601	-	-	0/7/31/31	0/3/3/3

All (15) bond length outliers are listed below:

Mol	Chain	Res	Type	Atoms	Z	Observed(Å)	Ideal(Å)
4	A	701	MVI	CAR-CBD	-3.43	1.40	1.48
4	C	701	MVI	CAR-CBD	-3.42	1.40	1.48
3	D	601	SAH	C5'-SD	-2.16	1.76	1.81
3	A	601	SAH	C5'-SD	-2.08	1.77	1.81
3	C	601	SAH	C5'-SD	-2.01	1.77	1.81
4	A	701	MVI	CAX-CBG	2.01	1.55	1.51
4	C	701	MVI	OAY-CBQ	2.44	1.44	1.40
4	A	701	MVI	CAR-CAS	2.78	1.39	1.32
3	A	601	SAH	C5-C4	2.91	1.47	1.40
4	C	701	MVI	CAR-CAS	3.00	1.40	1.32
3	C	601	SAH	C5-C4	3.18	1.47	1.40
3	D	601	SAH	C5-C4	3.48	1.48	1.40
5	C	400	DMS	O-S	4.35	1.80	1.50
5	A	400	DMS	O-S	4.40	1.80	1.50
5	A	401	DMS	O-S	4.40	1.80	1.50

All (23) bond angle outliers are listed below:

Mol	Chain	Res	Type	Atoms	Z	Observed(°)	Ideal(°)
3	A	601	SAH	N3-C2-N1	-7.68	123.01	128.89
3	D	601	SAH	N3-C2-N1	-7.13	123.44	128.89
3	C	601	SAH	N3-C2-N1	-6.50	123.91	128.89
4	A	701	MVI	CAP-CAO-CAQ	-3.81	116.19	124.66
3	A	601	SAH	C4-C5-N7	-3.40	106.35	109.48
4	C	701	MVI	CAP-CAO-CAQ	-3.37	117.18	124.66
3	C	601	SAH	C4-C5-N7	-3.33	106.42	109.48
3	D	601	SAH	C4-C5-N7	-2.94	106.78	109.48
3	A	601	SAH	CB-CG-SD	-2.80	108.18	113.57
4	C	701	MVI	CBK-CAT-CAP	-2.64	119.36	125.35
3	A	601	SAH	C1'-N9-C4	-2.48	123.19	126.94

Continued on next page...

Continued from previous page...

Mol	Chain	Res	Type	Atoms	Z	Observed(°)	Ideal(°)
4	A	701	MVI	OAY-CBQ-CBN	-2.38	105.04	108.04
3	C	601	SAH	CB-CG-SD	-2.21	109.32	113.57
3	D	601	SAH	CB-CG-SD	-2.09	109.53	113.57
4	A	701	MVI	OBA-CBG-CAC	2.12	111.25	106.78
4	A	701	MVI	CBQ-OB-BCBJ	2.29	117.55	113.64
4	C	701	MVI	OAZ-CBD-CAR	2.43	117.45	111.42
4	C	701	MVI	CBM-CBL-CBJ	2.46	113.87	109.72
4	A	701	MVI	OAZ-CBD-CAR	2.87	118.53	111.42
4	C	701	MVI	CBQ-OB-BCBJ	3.02	118.79	113.64
4	C	701	MVI	OB-BCBJ-CAF	3.26	113.76	106.64
4	C	701	MVI	OB-BCBJ-CBL	3.83	116.17	109.53
4	A	701	MVI	OB-BCBJ-CAF	3.95	115.28	106.64

There are no chirality outliers.

There are no torsion outliers.

There are no ring outliers.

3 monomers are involved in 3 short contacts:

Mol	Chain	Res	Type	Clashes	Symm-Clashes
5	A	401	DMS	1	0
4	A	701	MVI	1	0
6	D	400	GOL	1	0

5.7 Other polymers [i](#)

There are no such residues in this entry.

5.8 Polymer linkage issues [i](#)

There are no chain breaks in this entry.

6 Fit of model and data ⓘ

6.1 Protein, DNA and RNA chains ⓘ

In the following table, the column labelled ‘#RSRZ> 2’ contains the number (and percentage) of RSRZ outliers, followed by percent RSRZ outliers for the chain as percentile scores relative to all X-ray entries and entries of similar resolution. The OWAB column contains the minimum, median, 95th percentile and maximum values of the occupancy-weighted average B-factor per residue. The column labelled ‘Q< 0.9’ lists the number of (and percentage) of residues with an average occupancy less than 0.9.

Mol	Chain	Analysed	<RSRZ>	#RSRZ>2	OWAB(Å ²)	Q<0.9
1	A	386/419 (92%)	0.34	24 (6%) 24 25	25, 41, 86, 123	0
1	B	350/419 (83%)	0.53	34 (9%) 10 9	24, 50, 100, 176	0
1	C	366/419 (87%)	0.42	24 (6%) 22 22	26, 45, 79, 141	0
1	D	393/419 (93%)	0.49	40 (10%) 9 8	27, 48, 98, 119	0
All	All	1495/1676 (89%)	0.44	122 (8%) 14 14	24, 45, 93, 176	0

All (122) RSRZ outliers are listed below:

Mol	Chain	Res	Type	RSRZ
1	C	381	THR	8.5
1	B	130	THR	7.5
1	C	380	PRO	6.4
1	D	311	PRO	6.4
1	C	382	TRP	6.0
1	D	317	ALA	6.0
1	A	344	SER	5.9
1	C	379	ILE	5.8
1	B	133	GLU	5.7
1	B	137	GLU	5.6
1	A	382	TRP	5.5
1	A	392	GLN	5.3
1	B	134	GLU	5.1
1	B	346	PRO	5.0
1	D	136	VAL	4.9
1	A	381	THR	4.8
1	B	139	ILE	4.8
1	B	324	GLY	4.7
1	C	130	THR	4.7
1	B	347	ASN	4.5
1	B	138	GLN	4.5

Continued on next page...

Continued from previous page...

Mol	Chain	Res	Type	RSRZ
1	B	143	LEU	4.3
1	A	343	PRO	4.2
1	A	387	PHE	4.2
1	A	385	ARG	4.1
1	D	316	GLN	4.1
1	D	178	PHE	4.1
1	A	380	PRO	4.1
1	D	310	TRP	4.1
1	B	136	VAL	4.0
1	A	394	SER	4.0
1	B	140	GLY	4.0
1	D	322	CYS	3.9
1	D	139	ILE	3.9
1	D	131	ASP	3.8
1	A	391	VAL	3.7
1	D	211	PRO	3.7
1	A	388	GLU	3.6
1	C	212	GLU	3.6
1	D	134	GLU	3.6
1	C	209	LYS	3.5
1	B	325	THR	3.5
1	D	324	GLY	3.4
1	C	129	LEU	3.3
1	A	130	THR	3.3
1	A	384	PRO	3.3
1	B	131	ASP	3.2
1	A	383	ILE	3.2
1	A	386	ASP	3.2
1	C	133	GLU	3.2
1	D	312	GLY	3.1
1	B	141	THR	3.1
1	D	5	THR	3.1
1	B	56	ASP	3.1
1	B	132	ASP	3.1
1	B	129	LEU	3.1
1	D	143	LEU	3.1
1	D	132	ASP	3.0
1	D	133	GLU	3.0
1	B	142	TYR	3.0
1	D	313	PHE	2.9
1	B	214	GLY	2.9
1	C	134	GLU	2.9

Continued on next page...

Continued from previous page...

Mol	Chain	Res	Type	RSRZ
1	B	144	LEU	2.9
1	D	323	SER	2.8
1	D	209	LYS	2.8
1	D	137	GLU	2.8
1	A	379	ILE	2.8
1	B	396	GLY	2.8
1	D	308	ALA	2.8
1	D	6	GLU	2.8
1	B	77	ARG	2.7
1	B	236	MET	2.7
1	D	392	GLN	2.7
1	C	137	GLU	2.7
1	C	93	PHE	2.7
1	B	7	PHE	2.7
1	B	135	ALA	2.7
1	D	397	GLY	2.7
1	C	131	ASP	2.7
1	A	390	LEU	2.6
1	A	342	LEU	2.6
1	B	75	PHE	2.5
1	D	309	TYR	2.5
1	B	36	ALA	2.5
1	D	144	LEU	2.5
1	C	135	ALA	2.4
1	C	89	ALA	2.4
1	C	142	TYR	2.4
1	D	142	TYR	2.4
1	A	378	GLY	2.4
1	C	378	GLY	2.4
1	C	136	VAL	2.4
1	A	393	ALA	2.4
1	D	321	GLU	2.3
1	D	235	ILE	2.3
1	B	90	ASP	2.3
1	B	69	SER	2.3
1	B	59	VAL	2.3
1	D	315	GLY	2.3
1	A	6	GLU	2.3
1	C	369	VAL	2.3
1	D	210	HIS	2.2
1	C	75	PHE	2.2
1	B	89	ALA	2.2

Continued on next page...

Continued from previous page...

Mol	Chain	Res	Type	RSRZ
1	D	138	GLN	2.2
1	D	314	GLY	2.2
1	D	130	THR	2.2
1	D	140	GLY	2.1
1	C	117	PRO	2.1
1	A	395	SER	2.1
1	D	160	ARG	2.1
1	B	85	ARG	2.1
1	C	352	TYR	2.1
1	A	213	TRP	2.1
1	C	91	GLU	2.1
1	A	136	VAL	2.1
1	B	31	GLN	2.1
1	D	213	TRP	2.0
1	C	90	ASP	2.0
1	D	208	TYR	2.0
1	D	188	ARG	2.0

6.2 Non-standard residues in protein, DNA, RNA chains [i](#)

There are no non-standard protein/DNA/RNA residues in this entry.

6.3 Carbohydrates [i](#)

There are no carbohydrates in this entry.

6.4 Ligands [i](#)

In the following table, the Atoms column lists the number of modelled atoms in the group and the number defined in the chemical component dictionary. LLDF column lists the quality of electron density of the group with respect to its neighbouring residues in protein, DNA or RNA chains. The B-factors column lists the minimum, median, 95th percentile and maximum values of B factors of atoms in the group. The column labelled 'Q< 0.9' lists the number of atoms with occupancy less than 0.9.

Mol	Type	Chain	Res	Atoms	RSCC	RSR	LLDF	B-factors(Å ²)	Q<0.9
5	DMS	A	400	4/4	0.96	0.36	3.43	74,74,74,75	0
6	GOL	D	400	6/6	0.90	0.26	2.61	78,78,78,80	0
2	MG	D	501	1/1	0.92	0.26	2.54	84,84,84,84	0
4	MVI	A	701	47/47	0.94	0.21	2.08	54,63,65,66	0

Continued on next page...

Continued from previous page...

Mol	Type	Chain	Res	Atoms	RSCC	RSR	LLDF	B-factors(\AA^2)	Q<0.9
4	MVI	C	701	47/47	0.89	0.20	1.32	63,66,68,69	0
3	SAH	D	601	26/26	0.92	0.21	0.76	65,67,70,71	0
5	DMS	C	400	4/4	0.96	0.18	0.25	71,72,72,73	0
3	SAH	C	601	26/26	0.96	0.13	-0.11	48,50,52,53	0
3	SAH	A	601	26/26	0.97	0.11	-0.55	36,37,42,43	0
5	DMS	A	401	4/4	0.97	0.13	-0.90	66,66,67,67	0
2	MG	C	501	1/1	0.96	0.06	-2.20	60,60,60,60	0
2	MG	A	501	1/1	0.99	0.10	-	47,47,47,47	0

6.5 Other polymers [i](#)

There are no such residues in this entry.