



Full wwPDB X-ray Structure Validation Report ⓘ

Jan 31, 2016 – 10:18 PM GMT

PDB ID : 1SZU
Title : The structure of gamma-aminobutyrate aminotransferase mutant: V241A
Authors : Liu, W.; Peterson, P.E.; Langston, J.A.; Jin, X.; Zhou, X.; Fisher, A.J.; Toney, M.D.
Deposited on : 2004-04-06
Resolution : 2.52 Å(reported)

This is a Full wwPDB X-ray Structure Validation Report for a publicly released PDB entry.
We welcome your comments at validation@mail.wwpdb.org
A user guide is available at
<http://wwpdb.org/validation/2016/XrayValidationReportHelp>
with specific help available everywhere you see the ⓘ symbol.

The following versions of software and data (see [references ⓘ](#)) were used in the production of this report:

MolProbity : 4.02b-467
Mogul : 1.7 (RC4), CSD as536be (2015)
Xtriage (Phenix) : 1.9-1692
EDS : rb-20026688
Percentile statistics : 20151230.v01 (using entries in the PDB archive December 30th 2015)
Refmac : 5.8.0135
CCP4 : 6.5.0
Ideal geometry (proteins) : Engh & Huber (2001)
Ideal geometry (DNA, RNA) : Parkinson et al. (1996)
Validation Pipeline (wwPDB-VP) : trunk26865

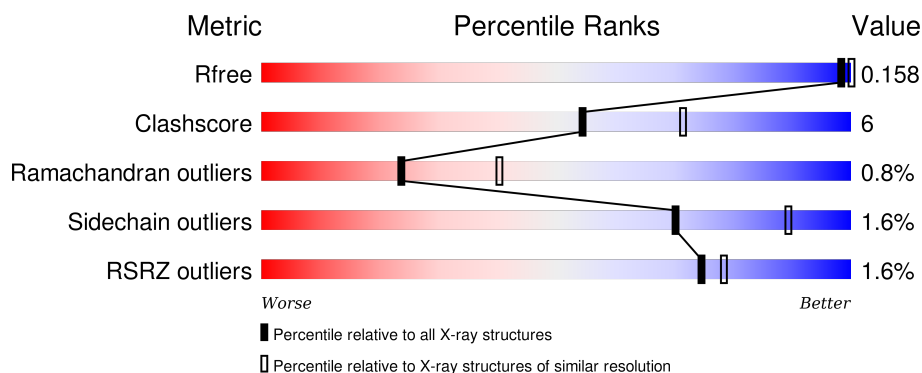
1 Overall quality at a glance ⓘ

The following experimental techniques were used to determine the structure:

X-RAY DIFFRACTION

The reported resolution of this entry is 2.52 Å.

Percentile scores (ranging between 0-100) for global validation metrics of the entry are shown in the following graphic. The table shows the number of entries on which the scores are based.



Metric	Whole archive (#Entries)	Similar resolution (#Entries, resolution range(Å))
R_{free}	91344	4241 (2.54-2.50)
Clashscore	102246	4968 (2.54-2.50)
Ramachandran outliers	100387	4873 (2.54-2.50)
Sidechain outliers	100360	4875 (2.54-2.50)
RSRZ outliers	91569	4253 (2.54-2.50)

The table below summarises the geometric issues observed across the polymeric chains and their fit to the electron density. The red, orange, yellow and green segments on the lower bar indicate the fraction of residues that contain outliers for ≥ 3 , 2, 1 and 0 types of geometric quality criteria. A grey segment represents the fraction of residues that are not modelled. The numeric value for each fraction is indicated below the corresponding segment, with a dot representing fractions $\leq 5\%$. The upper red bar (where present) indicates the fraction of residues that have poor fit to the electron density. The numeric value is given above the bar.

Mol	Chain	Length	Quality of chain
1	A	426	<div> <div>2%</div> <div>88%</div> <div>12%</div> </div>
1	B	426	<div> <div>%</div> <div>87%</div> <div>12%</div> <div>.</div> </div>
1	C	426	<div> <div>2%</div> <div>80%</div> <div>19%</div> <div>.</div> </div>
1	D	426	<div> <div>%</div> <div>85%</div> <div>14%</div> <div>.</div> </div>

The following table lists non-polymeric compounds, carbohydrate monomers and non-standard

residues in protein, DNA, RNA chains that are outliers for geometric or electron-density-fit criteria:

Mol	Type	Chain	Res	Chirality	Geometry	Clashes	Electron density
3	EDO	A	1023	-	-	-	X
3	EDO	A	1033	-	-	-	X
3	EDO	B	1022	-	-	-	X
3	EDO	B	1024	-	-	-	X
3	EDO	C	1034	-	-	-	X
3	EDO	D	1025	-	-	X	-
3	EDO	D	1026	-	-	-	X
3	EDO	D	1027	-	-	-	X
3	EDO	D	1032	-	-	-	X

2 Entry composition

There are 6 unique types of molecules in this entry. The entry contains 14042 atoms, of which 0 are hydrogens and 0 are deuteriums.

In the tables below, the ZeroOcc column contains the number of atoms modelled with zero occupancy, the AltConf column contains the number of residues with at least one atom in alternate conformation and the Trace column contains the number of residues modelled with at most 2 atoms.

- Molecule 1 is a protein called 4-aminobutyrate aminotransferase.

Mol	Chain	Residues	Atoms					ZeroOcc	AltConf	Trace
1	A	425	Total	C	N	O	S	0	1	0
			3213	2030	563	602	18			
1	B	425	Total	C	N	O	S	0	1	0
			3213	2030	563	602	18			
1	C	425	Total	C	N	O	S	0	1	0
			3213	2030	563	602	18			
1	D	425	Total	C	N	O	S	0	1	0
			3213	2030	563	602	18			

There are 4 discrepancies between the modelled and reference sequences:

Chain	Residue	Modelled	Actual	Comment	Reference
A	241	ALA	VAL	ENGINEERED	UNP P22256
B	241	ALA	VAL	ENGINEERED	UNP P22256
C	241	ALA	VAL	ENGINEERED	UNP P22256
D	241	ALA	VAL	ENGINEERED	UNP P22256

- Molecule 2 is SULFATE ION (three-letter code: SO4) (formula: O₄S).



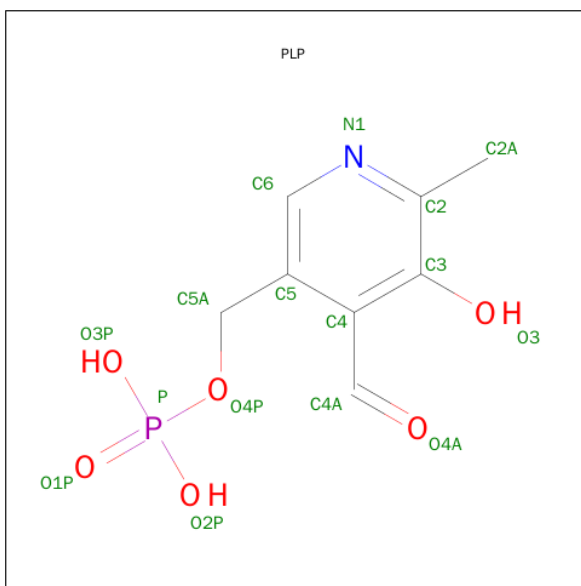
Mol	Chain	Residues	Atoms			ZeroOcc	AltConf
2	A	1	Total	O	S	0	0
			5	4	1		
2	B	1	Total	O	S	0	0
			5	4	1		
2	B	1	Total	O	S	0	0
			5	4	1		
2	C	1	Total	O	S	0	0
			5	4	1		
2	D	1	Total	O	S	0	0
			5	4	1		
2	D	1	Total	O	S	0	0
			5	4	1		
2	A	1	Total	O	S	0	0
			5	4	1		
2	B	1	Total	O	S	0	0
			5	4	1		
2	B	1	Total	O	S	0	0
			5	4	1		
2	C	1	Total	O	S	0	0
			5	4	1		
2	C	1	Total	O	S	0	0
			5	4	1		

- Molecule 3 is 1,2-ETHANEDIOL (three-letter code: EDO) (formula: C₂H₆O₂).



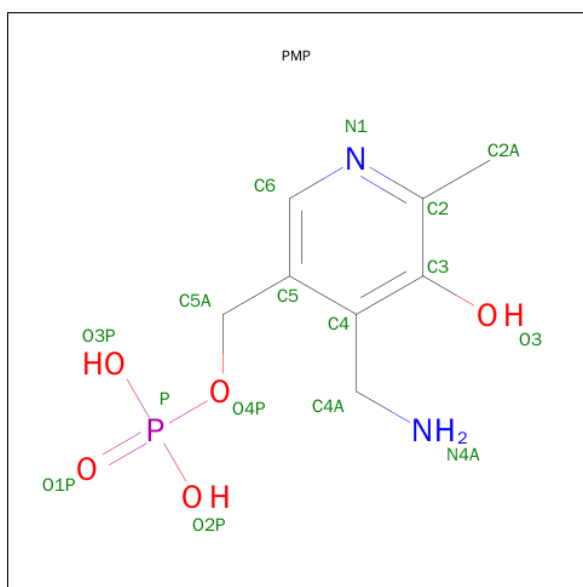
Mol	Chain	Residues	Atoms			ZeroOcc	AltConf
3	B	1	Total	C	O	0	0
			4	2	2		
3	B	1	Total	C	O	0	0
			4	2	2		
3	A	1	Total	C	O	0	0
			4	2	2		
3	B	1	Total	C	O	0	0
			4	2	2		
3	D	1	Total	C	O	0	0
			4	2	2		
3	D	1	Total	C	O	0	0
			4	2	2		
3	D	1	Total	C	O	0	0
			4	2	2		
3	A	1	Total	C	O	0	0
			4	2	2		
3	C	1	Total	C	O	0	0
			4	2	2		
3	A	1	Total	C	O	0	0
			4	2	2		
3	C	1	Total	C	O	0	0
			4	2	2		
3	D	1	Total	C	O	0	0
			4	2	2		
3	A	1	Total	C	O	0	0
			4	2	2		
3	C	1	Total	C	O	0	0
			4	2	2		

- Molecule 4 is PYRIDOXAL-5'-PHOSPHATE (three-letter code: PLP) (formula: $C_8H_{10}NO_6P$).



Mol	Chain	Residues	Atoms					ZeroOcc	AltConf
4	A	1	Total	C	N	O	P	0	1
			15	8	1	5	1		
4	B	1	Total	C	N	O	P	0	1
			15	8	1	5	1		
4	C	1	Total	C	N	O	P	0	1
			15	8	1	5	1		
4	D	1	Total	C	N	O	P	0	1
			15	8	1	5	1		

- Molecule 5 is 4'-DEOXY-4'-AMINOPYRIDOXAL-5'-PHOSPHATE (three-letter code: PMP) (formula: $C_8H_{13}N_2O_5P$).



Mol	Chain	Residues	Atoms					ZeroOcc	AltConf
5	A	1	Total	C	N	O	P	0	1
			16	8	2	5	1		
5	B	1	Total	C	N	O	P	0	1
			16	8	2	5	1		
5	C	1	Total	C	N	O	P	0	1
			16	8	2	5	1		
5	D	1	Total	C	N	O	P	0	1
			16	8	2	5	1		

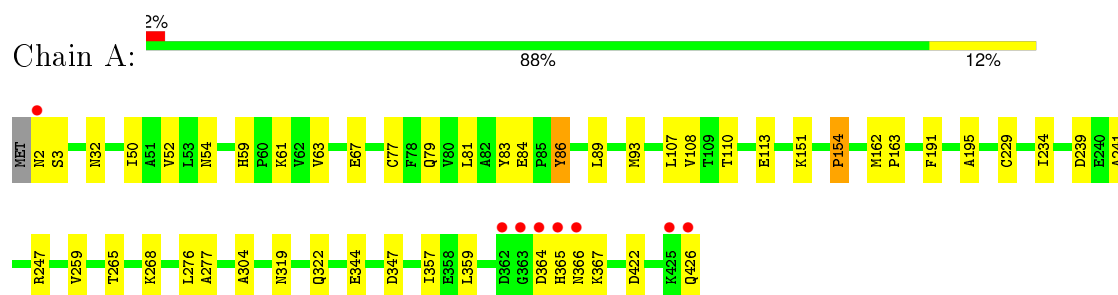
- Molecule 6 is water.

Mol	Chain	Residues	Atoms		ZeroOcc	AltConf
6	A	249	Total	O	0	0
			249	249		
6	B	253	Total	O	0	0
			253	253		
6	C	211	Total	O	0	0
			211	211		
6	D	242	Total	O	0	0
			242	242		

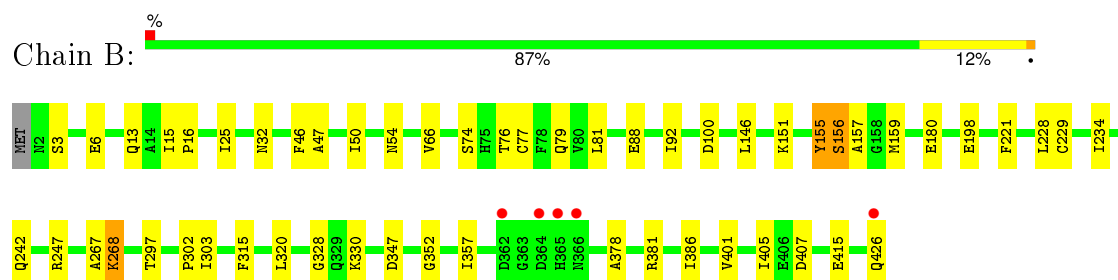
3 Residue-property plots [i](#)

These plots are drawn for all protein, RNA and DNA chains in the entry. The first graphic for a chain summarises the proportions of errors displayed in the second graphic. The second graphic shows the sequence view annotated by issues in geometry and electron density. Residues are color-coded according to the number of geometric quality criteria for which they contain at least one outlier: green = 0, yellow = 1, orange = 2 and red = 3 or more. A red dot above a residue indicates a poor fit to the electron density ($RSRZ > 2$). Stretches of 2 or more consecutive residues without any outlier are shown as a green connector. Residues present in the sample, but not in the model, are shown in grey.

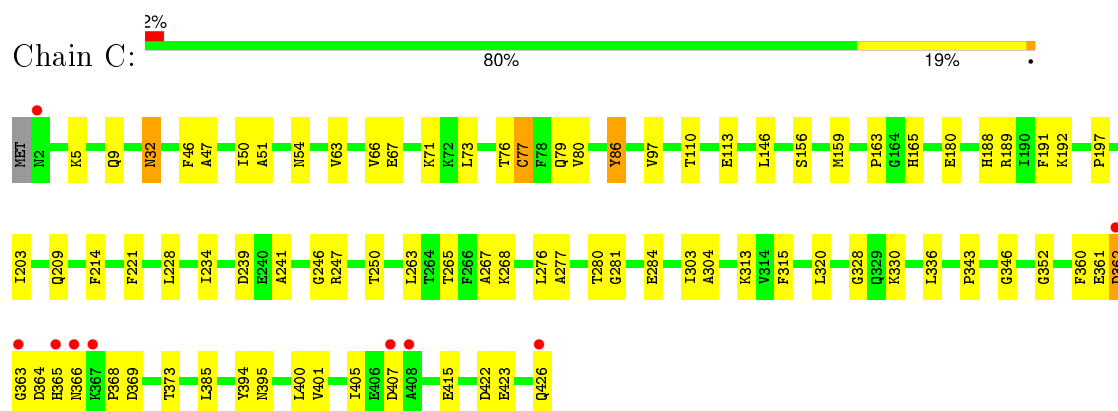
- Molecule 1: 4-aminobutyrate aminotransferase



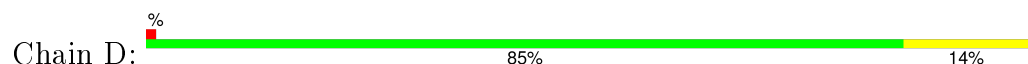
- Molecule 1: 4-aminobutyrate aminotransferase

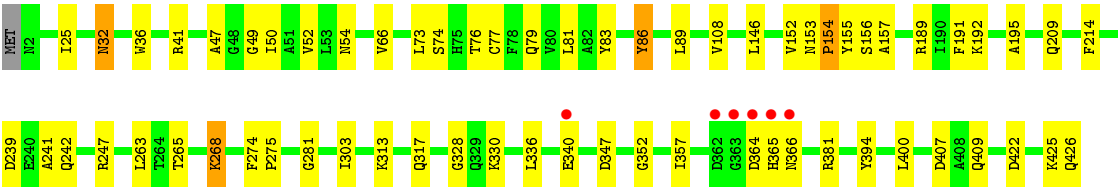


- Molecule 1: 4-aminobutyrate aminotransferase



- Molecule 1: 4-aminobutyrate aminotransferase





4 Data and refinement statistics

Property	Value	Source
Space group	P 32 2 1	Depositor
Cell constants a, b, c, α , β , γ	108.20Å 108.20Å 301.66Å 90.00° 90.00° 120.00°	Depositor
Resolution (Å)	30.00 – 2.52 29.83 – 2.52	Depositor EDS
% Data completeness (in resolution range)	(Not available) (30.00-2.52) 98.4 (29.83-2.52)	Depositor EDS
R_{merge}	(Not available)	Depositor
R_{sym}	(Not available)	Depositor
$\langle I/\sigma(I) \rangle$ ¹	9.03 (at 2.51Å)	Xtriage
Refinement program	CNS 1.0	Depositor
R, R_{free}	0.154 , 0.202 0.158 , 0.158	Depositor DCC
R_{free} test set	3485 reflections (5.06%)	DCC
Wilson B-factor (Å ²)	24.5	Xtriage
Anisotropy	0.543	Xtriage
Bulk solvent k_{sol} (e/Å ³), B_{sol} (Å ²)	0.35 , 56.0	EDS
Estimated twinning fraction	0.017 for -h,-k,l	Xtriage
L-test for twinning ²	$\langle L \rangle = 0.50$, $\langle L^2 \rangle = 0.33$	Xtriage
Outliers	0 of 68806 reflections	Xtriage
F_o, F_c correlation	0.96	EDS
Total number of atoms	14042	wwPDB-VP
Average B, all atoms (Å ²)	26.0	wwPDB-VP

Xtriage's analysis on translational NCS is as follows: *The largest off-origin peak in the Patterson function is 3.54% of the height of the origin peak. No significant pseudotranslation is detected.*

¹Intensities estimated from amplitudes.

²Theoretical values of $\langle |L| \rangle$, $\langle L^2 \rangle$ for acentric reflections are 0.5, 0.375 respectively for untwinned datasets, and 0.333, 0.2 for perfectly twinned datasets.

5 Model quality [i](#)

5.1 Standard geometry [i](#)

Bond lengths and bond angles in the following residue types are not validated in this section: PLP, PMP, EDO, SO4

The Z score for a bond length (or angle) is the number of standard deviations the observed value is removed from the expected value. A bond length (or angle) with $|Z| > 5$ is considered an outlier worth inspection. RMSZ is the root-mean-square of all Z scores of the bond lengths (or angles).

Mol	Chain	Bond lengths		Bond angles	
		RMSZ	# Z >5	RMSZ	# Z >5
1	A	0.46	0/3272	0.67	0/4427
1	B	0.48	0/3272	0.66	0/4427
1	C	0.44	0/3272	0.65	0/4427
1	D	0.47	0/3272	0.66	0/4427
All	All	0.46	0/13088	0.66	0/17708

There are no bond length outliers.

There are no bond angle outliers.

There are no chirality outliers.

There are no planarity outliers.

5.2 Too-close contacts [i](#)

In the following table, the Non-H and H(model) columns list the number of non-hydrogen atoms and hydrogen atoms in the chain respectively. The H(added) column lists the number of hydrogen atoms added and optimized by MolProbity. The Clashes column lists the number of clashes within the asymmetric unit, whereas Symm-Clashes lists symmetry related clashes.

Mol	Chain	Non-H	H(model)	H(added)	Clashes	Symm-Clashes
1	A	3213	0	3227	30	0
1	B	3213	0	3227	37	0
1	C	3213	0	3227	54	0
1	D	3213	0	3226	48	0
2	A	10	0	0	1	0
2	B	20	0	0	0	0
2	C	15	0	0	0	0
2	D	10	0	0	0	0
3	A	16	0	24	4	0

Continued on next page...

Continued from previous page...

Mol	Chain	Non-H	H(model)	H(added)	Clashes	Symm-Clashes
3	B	12	0	18	6	0
3	C	12	0	18	4	0
3	D	16	0	24	7	0
4	A	15	0	7	0	0
4	B	15	0	7	0	0
4	C	15	0	7	0	0
4	D	15	0	7	0	0
5	A	16	0	10	1	0
5	B	16	0	10	1	0
5	C	16	0	10	1	0
5	D	16	0	10	1	0
6	A	249	0	0	2	0
6	B	253	0	0	6	0
6	C	211	0	0	7	0
6	D	242	0	0	6	0
All	All	14042	0	13059	168	0

The all-atom clashscore is defined as the number of clashes found per 1000 atoms (including hydrogen atoms). The all-atom clashscore for this structure is 6.

All (168) close contacts within the same asymmetric unit are listed below, sorted by their clash magnitude.

Atom-1	Atom-2	Interatomic distance (Å)	Clash overlap (Å)
1:D:25:ILE:HD11	1:D:381:ARG:HD3	1.54	0.89
1:B:151:LYS:HE2	1:D:192:LYS:HZ1	1.35	0.88
1:B:25:ILE:HD11	1:B:381:ARG:HD3	1.58	0.85
1:B:151:LYS:HE2	1:D:192:LYS:NZ	1.93	0.84
1:C:63:VAL:O	1:C:67:GLU:HG3	1.87	0.74
1:D:157:ALA:HA	6:D:1712:HOH:O	1.90	0.71
5:C:1568[B]:PMP:N4A	6:C:1774:HOH:O	2.19	0.70
1:B:401:VAL:HG21	1:B:405:ILE:HD12	1.73	0.70
3:A:1028:EDO:H11	1:B:81:LEU:HD12	1.75	0.67
3:A:1023:EDO:H22	1:C:165:HIS:H	1.59	0.67
1:C:54:ASN:ND2	1:C:247:ARG:HH11	1.95	0.65
1:B:54:ASN:ND2	1:B:247:ARG:HH11	1.96	0.63
1:B:426:GLN:N	1:B:426:GLN:OE1	2.31	0.63
5:D:1569[B]:PMP:H4A1	6:D:1811:HOH:O	1.97	0.62
1:A:54:ASN:ND2	1:A:247:ARG:HH11	1.97	0.62
1:D:336:LEU:O	1:D:340:GLU:HG3	1.98	0.62
1:B:151:LYS:HG3	1:D:192:LYS:HZ2	1.62	0.62
1:D:313:LYS:HB3	1:D:317:GLN:HE21	1.65	0.62

Continued on next page...

Continued from previous page...

Atom-1	Atom-2	Interatomic distance (Å)	Clash overlap (Å)
1:D:47:ALA:HB3	3:D:1025:EDO:O1	2.01	0.60
1:A:2:ASN:N	6:A:1750:HOH:O	2.36	0.59
1:B:198:GLU:HG3	6:B:1795:HOH:O	2.02	0.59
1:C:263:LEU:HD23	1:C:281:GLY:HA3	1.86	0.58
1:C:76:THR:HB	3:D:1025:EDO:H22	1.87	0.57
1:B:13:GLN:HG3	6:B:1752:HOH:O	2.04	0.57
1:A:63:VAL:O	1:A:67:GLU:HG3	2.05	0.56
1:C:156:SER:HA	1:C:159:MET:CE	2.36	0.56
1:B:79:GLN:HG3	6:B:1628:HOH:O	2.06	0.55
1:B:426:GLN:HG2	1:B:426:GLN:O	2.06	0.55
1:D:66:VAL:HG13	1:D:303:ILE:HG23	1.87	0.55
1:A:422:ASP:O	1:A:426:GLN:HG3	2.06	0.55
1:D:79:GLN:HG3	6:D:1609:HOH:O	2.06	0.55
1:B:88:GLU:O	1:B:92:ILE:HG12	2.06	0.54
1:B:315:PHE:CD2	1:B:320:LEU:HB2	2.42	0.54
1:C:401:VAL:HG21	1:C:405:ILE:HD12	1.89	0.54
1:C:146:LEU:HD13	1:C:156:SER:HB3	1.89	0.53
1:D:54:ASN:ND2	1:D:247:ARG:HH11	2.06	0.53
1:C:239:ASP:HA	1:C:265:THR:OG1	2.09	0.53
1:B:74:SER:O	1:B:302:PRO:HD2	2.09	0.53
1:D:73:LEU:HD12	1:D:73:LEU:C	2.29	0.53
1:D:191:PHE:HA	1:D:195:ALA:O	2.09	0.52
1:B:47:ALA:HB3	3:B:1021:EDO:O2	2.08	0.52
1:C:110:THR:OG1	1:C:113:GLU:HG3	2.08	0.52
1:D:242:GLN:HB2	1:D:268[B]:LYS:HE3	1.91	0.52
1:C:79:GLN:HB2	3:C:1034:EDO:H11	1.92	0.52
1:A:229:CYS:HB3	1:A:234:ILE:O	2.10	0.51
1:A:344:GLU:H	1:A:344:GLU:CD	2.14	0.51
1:C:180:GLU:HG2	1:C:221:PHE:HB2	1.92	0.51
1:D:49:GLY:H	3:D:1025:EDO:H12	1.75	0.51
1:B:15:ILE:HG23	1:B:16:PRO:HD2	1.92	0.51
1:D:49:GLY:HA2	3:D:1025:EDO:H12	1.92	0.51
1:C:343:PRO:HA	6:C:1709:HOH:O	2.11	0.50
1:A:319:ASN:ND2	1:A:322:GLN:HB3	2.26	0.50
1:C:5:LYS:O	1:C:9:GLN:HG3	2.11	0.50
1:B:330:LYS:NZ	1:B:407:ASP:OD1	2.45	0.50
1:D:422:ASP:O	1:D:426:GLN:HG3	2.12	0.50
1:D:422:ASP:O	1:D:425:LYS:HG2	2.12	0.50
1:A:191:PHE:HA	1:A:195:ALA:O	2.12	0.49
1:C:76:THR:O	1:C:77:CYS:HB3	2.12	0.49
1:D:241:ALA:O	1:D:268[B]:LYS:HD2	2.12	0.49

Continued on next page...

Continued from previous page...

Atom-1	Atom-2	Interatomic distance (Å)	Clash overlap (Å)
1:D:192:LYS:HD2	6:D:1686:HOH:O	2.10	0.49
1:C:241:ALA:HB2	6:C:1772:HOH:O	2.13	0.49
1:D:242:GLN:HA	1:D:268[B]:LYS:HD2	1.95	0.49
1:C:228:LEU:HD23	1:C:228:LEU:C	2.33	0.49
1:C:366:ASN:O	1:C:368:PRO:HD3	2.12	0.49
1:D:214:PHE:HZ	1:D:400:LEU:HD21	1.78	0.48
1:C:330:LYS:NZ	1:C:407:ASP:OD1	2.47	0.48
1:B:76:THR:O	1:B:77:CYS:HB3	2.13	0.48
1:A:151:LYS:NZ	2:A:1007:SO4:O1	2.47	0.48
1:C:66:VAL:HG13	1:C:303:ILE:HG23	1.95	0.47
1:C:76:THR:O	1:D:49:GLY:HA2	2.14	0.47
1:D:146:LEU:CD2	1:D:155:TYR:HB3	2.44	0.47
1:C:246:GLY:HA2	1:C:250:THR:O	2.14	0.47
1:C:276:LEU:HG	1:C:277:ALA:N	2.27	0.47
1:C:328:GLY:HA3	1:C:352:GLY:O	2.15	0.47
1:D:364:ASP:OD2	1:D:366:ASN:HB2	2.15	0.47
1:A:154:PRO:HB2	6:A:1807:HOH:O	2.15	0.47
1:C:315:PHE:CD2	1:C:320:LEU:HB2	2.50	0.46
1:A:59:HIS:HE1	1:A:61:LYS:HG2	1.80	0.46
1:C:51:ALA:HB2	1:C:400:LEU:HD22	1.98	0.46
1:B:229:CYS:HB3	1:B:234:ILE:O	2.14	0.46
1:D:330:LYS:NZ	1:D:407:ASP:OD1	2.49	0.46
5:B:1567[B]:PMP:H4A1	6:B:1817:HOH:O	2.15	0.46
1:B:66:VAL:HG13	1:B:303:ILE:HG23	1.96	0.46
1:D:73:LEU:O	1:D:73:LEU:HD12	2.16	0.46
1:B:381:ARG:NE	3:B:1022:EDO:O2	2.32	0.46
1:A:108:VAL:HG23	1:A:277:ALA:HB3	1.98	0.46
1:D:239:ASP:HA	1:D:265:THR:OG1	2.15	0.46
1:C:80:VAL:HG11	3:D:1025:EDO:H11	1.98	0.46
1:C:362:ASP:C	1:C:364:ASP:H	2.20	0.46
1:A:276:LEU:HB2	1:A:304:ALA:HB1	1.96	0.45
1:A:268[B]:LYS:HZ3	5:A:1566[B]:PMP:H4A2	1.81	0.45
1:C:189:ARG:HD2	6:C:1698:HOH:O	2.16	0.45
1:A:77:CYS:SG	1:A:79:GLN:HG2	2.57	0.45
1:B:156:SER:O	1:B:159:MET:HB2	2.17	0.45
1:C:422:ASP:O	1:C:426:GLN:HG3	2.16	0.45
1:B:328:GLY:HA3	1:B:352:GLY:O	2.17	0.45
1:C:73:LEU:C	1:C:73:LEU:HD12	2.36	0.45
1:C:361:GLU:N	1:C:369:ASP:HB2	2.31	0.45
1:C:97:VAL:HG21	1:C:280:THR:HB	1.98	0.44
1:D:263:LEU:HD23	1:D:281:GLY:HA3	1.99	0.44

Continued on next page...

Continued from previous page...

Atom-1	Atom-2	Interatomic distance (Å)	Clash overlap (Å)
1:C:373:THR:OG1	1:C:395:ASN:HA	2.18	0.44
1:C:313:LYS:HE3	6:C:1667:HOH:O	2.18	0.44
1:D:76:THR:O	1:D:77:CYS:HB3	2.18	0.44
1:A:364:ASP:OD2	1:A:367:LYS:HG3	2.18	0.44
3:A:1023:EDO:H22	1:C:165:HIS:N	2.29	0.43
1:A:162:MET:HB3	1:A:163:PRO:HD2	1.99	0.43
1:B:242:GLN:HA	1:B:268[B]:LYS:HD2	1.99	0.43
1:D:32:ASN:C	1:D:32:ASN:HD22	2.22	0.43
1:D:347:ASP:O	1:D:357:ILE:HA	2.19	0.43
1:A:52:VAL:HG21	1:B:297:THR:CG2	2.48	0.43
1:C:46:PHE:CG	1:C:385:LEU:HD11	2.54	0.43
1:D:313:LYS:HB3	1:D:317:GLN:NE2	2.33	0.43
1:D:189:ARG:HG2	6:D:1651:HOH:O	2.17	0.43
1:D:274:PHE:HA	1:D:275:PRO:HD3	1.91	0.43
1:C:346:GLY:HA3	1:C:360:PHE:HD1	1.83	0.43
3:C:1034:EDO:H21	6:C:1775:HOH:O	2.17	0.43
1:A:364:ASP:O	1:A:366:ASN:N	2.48	0.43
1:A:110:THR:OG1	1:A:113:GLU:HG3	2.19	0.43
1:B:3:SER:HB3	1:B:6:GLU:HB3	2.01	0.43
1:C:203:ILE:HG13	1:C:234:ILE:HG21	2.01	0.43
1:C:209:GLN:O	1:C:214:PHE:HA	2.19	0.42
1:A:84:GLU:HG3	6:B:1784:HOH:O	2.18	0.42
1:D:152:VAL:HG13	1:D:156:SER:HB2	2.01	0.42
1:C:336:LEU:HA	1:C:336:LEU:HD23	1.90	0.42
3:A:1028:EDO:C1	1:B:81:LEU:HD12	2.47	0.42
1:B:381:ARG:HE	3:B:1022:EDO:HO2	1.60	0.42
1:D:49:GLY:N	3:D:1025:EDO:H12	2.35	0.42
1:C:156:SER:HA	1:C:159:MET:HE1	2.02	0.42
1:B:157:ALA:HA	6:D:1603:HOH:O	2.18	0.42
1:D:153:ASN:HA	1:D:154:PRO:HA	1.89	0.42
1:C:423:GLU:HA	1:C:426:GLN:HG3	2.02	0.42
1:C:71:LYS:HA	6:C:1707:HOH:O	2.19	0.42
1:C:188:HIS:O	1:C:192:LYS:HG2	2.20	0.42
3:C:1029:EDO:H22	1:D:81:LEU:HD12	2.02	0.41
1:B:378:ALA:HA	3:B:1022:EDO:H22	2.02	0.41
1:B:100:ASP:OD1	1:B:100:ASP:C	2.59	0.41
1:A:347:ASP:O	1:A:357:ILE:HA	2.20	0.41
1:D:83:TYR:CE1	1:D:86:TYR:HB2	2.56	0.41
1:A:344:GLU:O	1:A:359:LEU:HA	2.21	0.41
1:D:74:SER:HA	1:D:303:ILE:CD1	2.50	0.41
1:C:32:ASN:HD22	1:C:32:ASN:C	2.24	0.41

Continued on next page...

Continued from previous page...

Atom-1	Atom-2	Interatomic distance (Å)	Clash overlap (Å)
1:A:89:LEU:O	1:A:93:MET:HG2	2.21	0.41
1:C:361:GLU:O	1:C:362:ASP:HB2	2.21	0.41
1:C:47:ALA:HB3	3:C:1029:EDO:O1	2.21	0.41
1:B:180:GLU:HG2	1:B:221:PHE:HB2	2.02	0.41
1:B:146:LEU:CD2	1:B:155:TYR:HB3	2.50	0.41
1:C:191:PHE:CG	1:C:197:PRO:HG3	2.55	0.41
1:D:52:VAL:O	1:D:52:VAL:HG12	2.21	0.41
1:B:347:ASP:O	1:B:357:ILE:HA	2.21	0.41
1:A:83:TYR:CE1	1:A:86:TYR:HB2	2.56	0.41
1:A:81:LEU:HD22	3:B:1021:EDO:C1	2.50	0.41
1:C:241:ALA:O	1:C:268[B]:LYS:HD2	2.21	0.41
1:D:209:GLN:O	1:D:214:PHE:HA	2.21	0.41
1:C:284:GLU:CD	1:C:284:GLU:H	2.24	0.41
1:D:328:GLY:HA3	1:D:352:GLY:O	2.21	0.41
6:B:1643:HOH:O	1:D:192:LYS:HE3	2.20	0.40
1:A:241:ALA:O	1:A:268[B]:LYS:HD2	2.20	0.40
1:C:364:ASP:O	1:C:366:ASN:N	2.54	0.40
1:C:276:LEU:HB2	1:C:304:ALA:HB1	2.03	0.40
1:B:228:LEU:C	1:B:228:LEU:HD23	2.41	0.40
1:D:49:GLY:CA	3:D:1025:EDO:H12	2.50	0.40
1:A:86:TYR:CG	1:A:107:LEU:HD12	2.56	0.40
1:C:86:TYR:C	1:C:86:TYR:CD2	2.95	0.40
1:D:36:TRP:HA	1:D:41:ARG:O	2.21	0.40
1:A:239:ASP:HA	1:A:265:THR:OG1	2.22	0.40
1:A:81:LEU:HD22	3:B:1021:EDO:H12	2.03	0.40
1:D:425:LYS:O	1:D:426:GLN:OXT	2.40	0.40
1:B:46:PHE:HB2	1:B:386:ILE:O	2.21	0.40

There are no symmetry-related clashes.

5.3 Torsion angles [i](#)

5.3.1 Protein backbone [i](#)

In the following table, the Percentiles column shows the percent Ramachandran outliers of the chain as a percentile score with respect to all X-ray entries followed by that with respect to entries of similar resolution.

The Analysed column shows the number of residues for which the backbone conformation was analysed, and the total number of residues.

Mol	Chain	Analysed	Favoured	Allowed	Outliers	Percentiles	
1	A	424/426 (100%)	402 (95%)	20 (5%)	2 (0%)	34	55
1	B	424/426 (100%)	401 (95%)	18 (4%)	5 (1%)	16	28
1	C	424/426 (100%)	395 (93%)	24 (6%)	5 (1%)	16	28
1	D	424/426 (100%)	401 (95%)	19 (4%)	4 (1%)	21	37
All	All	1696/1704 (100%)	1599 (94%)	81 (5%)	16 (1%)	24	37

All (16) Ramachandran outliers are listed below:

Mol	Chain	Res	Type
1	A	365	HIS
1	B	155	TYR
1	C	365	HIS
1	B	267	ALA
1	B	268[A]	LYS
1	B	268[B]	LYS
1	C	77	CYS
1	C	267	ALA
1	D	268[A]	LYS
1	D	268[B]	LYS
1	C	363	GLY
1	D	50	ILE
1	C	50	ILE
1	A	50	ILE
1	B	50	ILE
1	D	108	VAL

5.3.2 Protein sidechains ⓘ

In the following table, the Percentiles column shows the percent sidechain outliers of the chain as a percentile score with respect to all X-ray entries followed by that with respect to entries of similar resolution.

The Analysed column shows the number of residues for which the sidechain conformation was analysed, and the total number of residues.

Mol	Chain	Analysed	Rotameric	Outliers	Percentiles	
1	A	329/329 (100%)	324 (98%)	5 (2%)	72	90
1	B	329/329 (100%)	326 (99%)	3 (1%)	84	95
1	C	329/329 (100%)	323 (98%)	6 (2%)	66	87
1	D	329/329 (100%)	322 (98%)	7 (2%)	61	84

Continued on next page...

Continued from previous page...

Mol	Chain	Analysed	Rotameric	Outliers	Percentiles	
All	All	1316/1316 (100%)	1295 (98%)	21 (2%)	70	89

All (21) residues with a non-rotameric sidechain are listed below:

Mol	Chain	Res	Type
1	A	3	SER
1	A	32	ASN
1	A	86	TYR
1	A	154	PRO
1	A	259	VAL
1	B	32	ASN
1	B	156	SER
1	B	415	GLU
1	C	32	ASN
1	C	86	TYR
1	C	163	PRO
1	C	362	ASP
1	C	394	TYR
1	C	415	GLU
1	D	32	ASN
1	D	86	TYR
1	D	89	LEU
1	D	154	PRO
1	D	365	HIS
1	D	394	TYR
1	D	409	GLN

Some sidechains can be flipped to improve hydrogen bonding and reduce clashes. All (27) such sidechains are listed below:

Mol	Chain	Res	Type
1	A	32	ASN
1	A	54	ASN
1	A	188	HIS
1	A	209	GLN
1	A	322	GLN
1	B	32	ASN
1	B	54	ASN
1	B	95	GLN
1	B	165	HIS
1	B	176	HIS
1	B	209	GLN

Continued on next page...

Continued from previous page...

Mol	Chain	Res	Type
1	B	317	GLN
1	B	319	ASN
1	B	322	GLN
1	B	366	ASN
1	C	32	ASN
1	C	54	ASN
1	C	176	HIS
1	C	209	GLN
1	C	322	GLN
1	D	32	ASN
1	D	54	ASN
1	D	176	HIS
1	D	209	GLN
1	D	317	GLN
1	D	319	ASN
1	D	426	GLN

5.3.3 RNA [i](#)

There are no RNA molecules in this entry.

5.4 Non-standard residues in protein, DNA, RNA chains [i](#)

There are no non-standard protein/DNA/RNA residues in this entry.

5.5 Carbohydrates [i](#)

There are no carbohydrates in this entry.

5.6 Ligand geometry [i](#)

33 ligands are modelled in this entry.

In the following table, the Counts columns list the number of bonds (or angles) for which Mogul statistics could be retrieved, the number of bonds (or angles) that are observed in the model and the number of bonds (or angles) that are defined in the chemical component dictionary. The Link column lists molecule types, if any, to which the group is linked. The Z score for a bond length (or angle) is the number of standard deviations the observed value is removed from the expected value. A bond length (or angle) with $|Z| > 2$ is considered an outlier worth inspection. RMSZ is the root-mean-square of all Z scores of the bond lengths (or angles).

Mol	Type	Chain	Res	Link	Bond lengths			Bond angles		
					Counts	RMSZ	# Z > 2	Counts	RMSZ	# Z > 2
2	SO4	A	1001	-	4,4,4	3.39	2 (50%)	6,6,6	0.87	0
2	SO4	A	1007	-	4,4,4	3.40	2 (50%)	6,6,6	0.82	0
3	EDO	A	1023	-	3,3,3	0.45	0	2,2,2	0.64	0
3	EDO	A	1028	-	3,3,3	0.52	0	2,2,2	0.44	0
3	EDO	A	1030	-	3,3,3	0.57	0	2,2,2	0.41	0
3	EDO	A	1033	-	3,3,3	0.49	0	2,2,2	0.61	0
4	PLP	A	1466[A]	1	15,15,16	2.93	9 (60%)	21,22,23	2.47	8 (38%)
5	PMP	A	1566[B]	-	16,16,16	5.92	4 (25%)	20,23,23	1.67	2 (10%)
2	SO4	B	1002	-	4,4,4	3.41	2 (50%)	6,6,6	0.86	0
2	SO4	B	1003	-	4,4,4	3.33	2 (50%)	6,6,6	0.94	0
2	SO4	B	1008	-	4,4,4	3.43	2 (50%)	6,6,6	0.89	0
2	SO4	B	1009	-	4,4,4	3.35	2 (50%)	6,6,6	0.90	0
3	EDO	B	1021	-	3,3,3	0.51	0	2,2,2	0.47	0
3	EDO	B	1022	-	3,3,3	0.53	0	2,2,2	0.53	0
3	EDO	B	1024	-	3,3,3	0.64	0	2,2,2	0.49	0
4	PLP	B	1467[A]	1	15,15,16	2.98	8 (53%)	21,22,23	2.26	8 (38%)
5	PMP	B	1567[B]	-	16,16,16	5.82	4 (25%)	20,23,23	1.67	3 (15%)
2	SO4	C	1004	-	4,4,4	3.47	2 (50%)	6,6,6	0.87	0
2	SO4	C	1010	-	4,4,4	3.40	2 (50%)	6,6,6	0.91	0
2	SO4	C	1011	-	4,4,4	3.45	2 (50%)	6,6,6	0.88	0
3	EDO	C	1029	-	3,3,3	0.45	0	2,2,2	0.50	0
3	EDO	C	1031	-	3,3,3	0.65	0	2,2,2	0.40	0
3	EDO	C	1034	-	3,3,3	0.62	0	2,2,2	0.43	0
4	PLP	C	1468[A]	1	15,15,16	3.14	9 (60%)	21,22,23	2.12	6 (28%)
5	PMP	C	1568[B]	-	16,16,16	5.96	4 (25%)	20,23,23	1.59	1 (5%)
2	SO4	D	1005	-	4,4,4	3.41	2 (50%)	6,6,6	0.88	0
2	SO4	D	1006	-	4,4,4	3.38	2 (50%)	6,6,6	0.90	0
3	EDO	D	1025	-	3,3,3	0.45	0	2,2,2	0.58	0
3	EDO	D	1026	-	3,3,3	0.68	0	2,2,2	0.41	0
3	EDO	D	1027	-	3,3,3	0.49	0	2,2,2	0.48	0
3	EDO	D	1032	-	3,3,3	0.62	0	2,2,2	0.44	0
4	PLP	D	1469[A]	1	15,15,16	3.25	8 (53%)	21,22,23	2.38	8 (38%)
5	PMP	D	1569[B]	-	16,16,16	5.91	4 (25%)	20,23,23	1.61	2 (10%)

In the following table, the Chirals column lists the number of chiral outliers, the number of chiral centers analysed, the number of these observed in the model and the number defined in the chemical component dictionary. Similar counts are reported in the Torsion and Rings columns. '-' means no outliers of that kind were identified.

Mol	Type	Chain	Res	Link	Chirals	Torsions	Rings
2	SO4	A	1001	-	-	0/0/0/0	0/0/0/0
2	SO4	A	1007	-	-	0/0/0/0	0/0/0/0
3	EDO	A	1023	-	-	0/1/1/1	0/0/0/0
3	EDO	A	1028	-	-	0/1/1/1	0/0/0/0
3	EDO	A	1030	-	-	0/1/1/1	0/0/0/0
3	EDO	A	1033	-	-	0/1/1/1	0/0/0/0
4	PLP	A	1466[A]	1	-	0/6/6/8	0/1/1/1
5	PMP	A	1566[B]	-	-	0/8/8/8	0/1/1/1
2	SO4	B	1002	-	-	0/0/0/0	0/0/0/0
2	SO4	B	1003	-	-	0/0/0/0	0/0/0/0
2	SO4	B	1008	-	-	0/0/0/0	0/0/0/0
2	SO4	B	1009	-	-	0/0/0/0	0/0/0/0
3	EDO	B	1021	-	-	0/1/1/1	0/0/0/0
3	EDO	B	1022	-	-	0/1/1/1	0/0/0/0
3	EDO	B	1024	-	-	0/1/1/1	0/0/0/0
4	PLP	B	1467[A]	1	-	0/6/6/8	0/1/1/1
5	PMP	B	1567[B]	-	-	0/8/8/8	0/1/1/1
2	SO4	C	1004	-	-	0/0/0/0	0/0/0/0
2	SO4	C	1010	-	-	0/0/0/0	0/0/0/0
2	SO4	C	1011	-	-	0/0/0/0	0/0/0/0
3	EDO	C	1029	-	-	0/1/1/1	0/0/0/0
3	EDO	C	1031	-	-	0/1/1/1	0/0/0/0
3	EDO	C	1034	-	-	0/1/1/1	0/0/0/0
4	PLP	C	1468[A]	1	-	0/6/6/8	0/1/1/1
5	PMP	C	1568[B]	-	-	0/8/8/8	0/1/1/1
2	SO4	D	1005	-	-	0/0/0/0	0/0/0/0
2	SO4	D	1006	-	-	0/0/0/0	0/0/0/0
3	EDO	D	1025	-	-	0/1/1/1	0/0/0/0
3	EDO	D	1026	-	-	0/1/1/1	0/0/0/0
3	EDO	D	1027	-	-	0/1/1/1	0/0/0/0
3	EDO	D	1032	-	-	0/1/1/1	0/0/0/0
4	PLP	D	1469[A]	1	-	0/6/6/8	0/1/1/1
5	PMP	D	1569[B]	-	-	0/8/8/8	0/1/1/1

All (72) bond length outliers are listed below:

Mol	Chain	Res	Type	Atoms	Z	Observed(Å)	Ideal(Å)
2	B	1008	SO4	O3-S	-4.97	1.29	1.47
2	C	1011	SO4	O3-S	-4.95	1.29	1.47
2	A	1007	SO4	O3-S	-4.89	1.29	1.47
2	B	1002	SO4	O3-S	-4.86	1.29	1.47
2	C	1010	SO4	O3-S	-4.83	1.30	1.47
2	D	1006	SO4	O3-S	-4.79	1.30	1.47

Continued on next page...

Continued from previous page...

Mol	Chain	Res	Type	Atoms	Z	Observed(Å)	Ideal(Å)
2	C	1004	SO4	O3-S	-4.78	1.30	1.47
2	B	1009	SO4	O3-S	-4.78	1.30	1.47
2	D	1005	SO4	O3-S	-4.78	1.30	1.47
2	B	1003	SO4	O3-S	-4.73	1.30	1.47
2	A	1001	SO4	O3-S	-4.70	1.30	1.47
4	C	1468[A]	PLP	P-O4P	-3.19	1.49	1.60
4	A	1466[A]	PLP	P-O4P	-2.74	1.51	1.60
4	B	1467[A]	PLP	P-O4P	-2.53	1.51	1.60
4	D	1469[A]	PLP	P-O4P	-2.30	1.52	1.60
4	C	1468[A]	PLP	C4A-C4	-2.17	1.47	1.51
4	A	1466[A]	PLP	C4A-C4	-2.06	1.47	1.51
4	C	1468[A]	PLP	P-O2P	2.13	1.62	1.54
4	B	1467[A]	PLP	P-O3P	2.28	1.62	1.54
4	A	1466[A]	PLP	P-O3P	2.29	1.62	1.54
4	A	1466[A]	PLP	P-O2P	2.31	1.63	1.54
4	C	1468[A]	PLP	P-O3P	2.37	1.63	1.54
4	D	1469[A]	PLP	P-O3P	2.41	1.63	1.54
4	C	1468[A]	PLP	C6-N1	2.69	1.40	1.34
4	B	1467[A]	PLP	C6-N1	2.94	1.40	1.34
4	A	1466[A]	PLP	C6-C5	2.96	1.44	1.37
4	B	1467[A]	PLP	C6-C5	3.03	1.44	1.37
4	D	1469[A]	PLP	C6-N1	3.03	1.41	1.34
4	A	1466[A]	PLP	C6-N1	3.05	1.41	1.34
4	B	1467[A]	PLP	P-O2P	3.07	1.65	1.54
4	D	1469[A]	PLP	P-O2P	3.09	1.65	1.54
4	D	1469[A]	PLP	C6-C5	3.19	1.44	1.37
4	C	1468[A]	PLP	C6-C5	3.37	1.45	1.37
5	A	1566[B]	PMP	C2-N1	3.73	1.42	1.34
5	D	1569[B]	PMP	C2-N1	3.76	1.42	1.34
5	B	1567[B]	PMP	C2-N1	3.76	1.42	1.34
4	A	1466[A]	PLP	C2-N1	3.82	1.42	1.34
5	C	1568[B]	PMP	C2-N1	3.86	1.42	1.34
4	C	1468[A]	PLP	C2-N1	3.89	1.42	1.34
4	B	1467[A]	PLP	C2-N1	4.10	1.42	1.34
4	D	1469[A]	PLP	C2-N1	4.18	1.43	1.34
4	C	1468[A]	PLP	P-O1P	4.32	1.65	1.51
4	A	1466[A]	PLP	P-O1P	4.36	1.65	1.51
2	A	1007	SO4	O1-S	4.58	1.62	1.47
2	B	1009	SO4	O1-S	4.63	1.63	1.47
2	B	1003	SO4	O1-S	4.64	1.63	1.47
2	B	1008	SO4	O1-S	4.65	1.63	1.47
2	B	1002	SO4	O1-S	4.68	1.63	1.47

Continued on next page...

Continued from previous page...

Mol	Chain	Res	Type	Atoms	Z	Observed(Å)	Ideal(Å)
2	C	1011	SO4	O1-S	4.70	1.63	1.47
2	C	1010	SO4	O1-S	4.72	1.63	1.47
2	D	1006	SO4	O1-S	4.72	1.63	1.47
2	D	1005	SO4	O1-S	4.75	1.63	1.47
2	A	1001	SO4	O1-S	4.82	1.63	1.47
5	C	1568[B]	PMP	C6-N1	4.83	1.44	1.34
4	B	1467[A]	PLP	P-O1P	4.84	1.67	1.51
5	A	1566[B]	PMP	C6-N1	4.88	1.44	1.34
5	B	1567[B]	PMP	C6-N1	4.91	1.45	1.34
2	C	1004	SO4	O1-S	4.95	1.64	1.47
5	D	1569[B]	PMP	C6-N1	5.00	1.45	1.34
4	D	1469[A]	PLP	P-O1P	5.68	1.69	1.51
4	B	1467[A]	PLP	C3-C2	6.88	1.45	1.40
4	A	1466[A]	PLP	C3-C2	7.28	1.45	1.40
4	D	1469[A]	PLP	C3-C2	7.96	1.46	1.40
4	C	1468[A]	PLP	C3-C2	8.27	1.46	1.40
5	A	1566[B]	PMP	C5-C4	14.18	1.60	1.40
5	C	1568[B]	PMP	C5-C4	14.19	1.60	1.40
5	B	1567[B]	PMP	C5-C4	14.21	1.60	1.40
5	D	1569[B]	PMP	C5-C4	14.60	1.61	1.40
5	B	1567[B]	PMP	C3-C2	17.02	1.52	1.40
5	D	1569[B]	PMP	C3-C2	17.12	1.52	1.40
5	A	1566[B]	PMP	C3-C2	17.50	1.52	1.40
5	C	1568[B]	PMP	C3-C2	17.71	1.53	1.40

All (38) bond angle outliers are listed below:

Mol	Chain	Res	Type	Atoms	Z	Observed(°)	Ideal(°)
4	A	1466[A]	PLP	C4A-C4-C3	-5.58	110.26	120.36
4	D	1469[A]	PLP	C4A-C4-C3	-5.48	110.44	120.36
4	C	1468[A]	PLP	C4A-C4-C3	-5.02	111.27	120.36
4	B	1467[A]	PLP	C4A-C4-C3	-4.83	111.62	120.36
4	A	1466[A]	PLP	C5A-C5-C6	-3.88	111.95	119.28
4	D	1469[A]	PLP	C5-C6-N1	-3.86	117.16	123.86
4	B	1467[A]	PLP	C5-C6-N1	-3.55	117.69	123.86
4	C	1468[A]	PLP	C5-C6-N1	-3.50	117.78	123.86
4	A	1466[A]	PLP	C5-C6-N1	-3.46	117.85	123.86
4	B	1467[A]	PLP	C5A-C5-C6	-3.32	113.01	119.28
4	D	1469[A]	PLP	C5A-C5-C6	-3.23	113.17	119.28
4	C	1468[A]	PLP	C5A-C5-C6	-2.98	113.64	119.28
4	C	1468[A]	PLP	C3-C2-N1	-2.46	117.22	120.61
4	D	1469[A]	PLP	C3-C2-N1	-2.45	117.22	120.61

Continued on next page...

Continued from previous page...

Mol	Chain	Res	Type	Atoms	Z	Observed(°)	Ideal(°)
4	B	1467[A]	PLP	C3-C2-N1	-2.32	117.40	120.61
4	A	1466[A]	PLP	C3-C2-N1	-2.23	117.53	120.61
5	B	1567[B]	PMP	O4P-P-O1P	-2.10	101.79	107.14
4	B	1467[A]	PLP	C6-N1-C2	2.20	123.77	119.28
4	C	1468[A]	PLP	C6-N1-C2	2.23	123.83	119.28
4	D	1469[A]	PLP	C6-N1-C2	2.35	124.08	119.28
4	A	1466[A]	PLP	C4A-C4-C5	2.44	123.43	120.88
5	A	1566[B]	PMP	O4P-C5A-C5	2.49	113.11	108.99
4	B	1467[A]	PLP	O4P-C5A-C5	2.49	113.12	108.99
4	B	1467[A]	PLP	C5A-C5-C4	2.55	125.03	121.65
4	A	1466[A]	PLP	O4P-C5A-C5	2.57	113.24	108.99
5	D	1569[B]	PMP	O4P-C5A-C5	2.73	113.51	108.99
5	B	1567[B]	PMP	O4P-C5A-C5	2.80	113.61	108.99
4	D	1469[A]	PLP	C5A-C5-C4	2.91	125.51	121.65
4	D	1469[A]	PLP	C4A-C4-C5	3.11	124.12	120.88
4	A	1466[A]	PLP	C3-C4-C5	4.13	123.29	118.78
4	D	1469[A]	PLP	C3-C4-C5	4.23	123.40	118.78
4	B	1467[A]	PLP	C3-C4-C5	4.31	123.49	118.78
4	A	1466[A]	PLP	C5A-C5-C4	4.38	127.46	121.65
4	C	1468[A]	PLP	C3-C4-C5	4.40	123.58	118.78
5	D	1569[B]	PMP	C2A-C2-C3	4.54	126.52	121.04
5	B	1567[B]	PMP	C2A-C2-C3	4.61	126.59	121.04
5	C	1568[B]	PMP	C2A-C2-C3	4.63	126.63	121.04
5	A	1566[B]	PMP	C2A-C2-C3	4.85	126.89	121.04

There are no chirality outliers.

There are no torsion outliers.

There are no ring outliers.

12 monomers are involved in 26 short contacts:

Mol	Chain	Res	Type	Clashes	Symm-Clashes
2	A	1007	SO4	1	0
3	A	1023	EDO	2	0
3	A	1028	EDO	2	0
5	A	1566[B]	PMP	1	0
3	B	1021	EDO	3	0
3	B	1022	EDO	3	0
5	B	1567[B]	PMP	1	0
3	C	1029	EDO	2	0
3	C	1034	EDO	2	0
5	C	1568[B]	PMP	1	0

Continued on next page...

Continued from previous page...

Mol	Chain	Res	Type	Clashes	Symm-Clashes
3	D	1025	EDO	7	0
5	D	1569[B]	PMP	1	0

5.7 Other polymers [i](#)

There are no such residues in this entry.

5.8 Polymer linkage issues [i](#)

There are no chain breaks in this entry.

6 Fit of model and data ⓘ

6.1 Protein, DNA and RNA chains ⓘ

In the following table, the column labelled ‘#RSRZ> 2’ contains the number (and percentage) of RSRZ outliers, followed by percent RSRZ outliers for the chain as percentile scores relative to all X-ray entries and entries of similar resolution. The OWAB column contains the minimum, median, 95th percentile and maximum values of the occupancy-weighted average B-factor per residue. The column labelled ‘Q< 0.9’ lists the number of (and percentage) of residues with an average occupancy less than 0.9.

Mol	Chain	Analysed	<RSRZ>	#RSRZ>2	OWAB(Å ²)	Q<0.9
1	A	425/426 (99%)	-0.57	8 (1%) 70 74	12, 22, 40, 72	0
1	B	425/426 (99%)	-0.62	5 (1%) 81 84	12, 21, 42, 73	0
1	C	425/426 (99%)	-0.41	9 (2%) 67 71	13, 27, 51, 72	0
1	D	425/426 (99%)	-0.63	6 (1%) 78 81	10, 22, 41, 72	0
All	All	1700/1704 (99%)	-0.56	28 (1%) 74 78	10, 23, 44, 73	0

All (28) RSRZ outliers are listed below:

Mol	Chain	Res	Type	RSRZ
1	B	426	GLN	4.9
1	D	362	ASP	4.7
1	A	426	GLN	4.1
1	B	362	ASP	3.9
1	C	362	ASP	3.8
1	C	363	GLY	3.4
1	D	363	GLY	3.3
1	C	2	ASN	3.2
1	D	366	ASN	3.2
1	A	362	ASP	3.0
1	D	365	HIS	2.9
1	A	365	HIS	2.8
1	A	363	GLY	2.8
1	C	408	ALA	2.7
1	B	365	HIS	2.6
1	C	426	GLN	2.6
1	A	364	ASP	2.6
1	C	367	LYS	2.5
1	B	366	ASN	2.5
1	C	365	HIS	2.4
1	A	366	ASN	2.4

Continued on next page...

Continued from previous page...

Mol	Chain	Res	Type	RSRZ
1	D	364	ASP	2.4
1	A	425	LYS	2.4
1	C	366	ASN	2.3
1	B	364	ASP	2.2
1	C	407	ASP	2.1
1	D	340	GLU	2.1
1	A	2	ASN	2.0

6.2 Non-standard residues in protein, DNA, RNA chains [i](#)

There are no non-standard protein/DNA/RNA residues in this entry.

6.3 Carbohydrates [i](#)

There are no carbohydrates in this entry.

6.4 Ligands [i](#)

In the following table, the Atoms column lists the number of modelled atoms in the group and the number defined in the chemical component dictionary. LLDF column lists the quality of electron density of the group with respect to its neighbouring residues in protein, DNA or RNA chains. The B-factors column lists the minimum, median, 95th percentile and maximum values of B factors of atoms in the group. The column labelled 'Q< 0.9' lists the number of atoms with occupancy less than 0.9.

Mol	Type	Chain	Res	Atoms	RSCC	RSR	LLDF	B-factors(Å ²)	Q<0.9
3	EDO	B	1024	4/4	0.88	0.31	9.02	32,36,37,41	0
3	EDO	C	1034	4/4	0.93	0.21	7.15	40,46,48,52	0
3	EDO	A	1023	4/4	0.94	0.28	6.93	32,33,33,34	0
3	EDO	D	1027	4/4	0.95	0.19	6.32	36,40,43,46	0
3	EDO	D	1032	4/4	0.93	0.25	4.91	29,31,34,34	0
3	EDO	D	1026	4/4	0.93	0.15	3.87	39,41,43,44	0
3	EDO	B	1022	4/4	0.87	0.19	3.68	31,35,38,42	0
3	EDO	A	1033	4/4	0.87	0.22	3.46	46,47,49,50	0
3	EDO	B	1021	4/4	0.98	0.17	1.43	30,35,38,41	0
3	EDO	A	1030	4/4	0.96	0.14	1.42	28,33,35,37	0
5	PMP	B	1567[B]	16/16	0.94	0.14	0.86	28,31,36,38	16
3	EDO	D	1025	4/4	0.96	0.14	0.78	32,32,33,34	0
5	PMP	D	1569[B]	16/16	0.94	0.14	0.76	29,34,41,45	16
4	PLP	B	1467[A]	15/16	0.94	0.14	0.71	23,26,31,32	15

Continued on next page...

Continued from previous page...

Mol	Type	Chain	Res	Atoms	RSCC	RSR	LLDF	B-factors(\AA^2)	Q<0.9
3	EDO	C	1031	4/4	0.96	0.12	0.66	27,29,30,31	0
3	EDO	C	1029	4/4	0.97	0.18	0.62	36,37,38,39	0
5	PMP	A	1566[B]	16/16	0.96	0.14	0.54	28,31,33,34	16
4	PLP	A	1466[A]	15/16	0.97	0.13	0.33	25,28,31,33	15
5	PMP	C	1568[B]	16/16	0.96	0.14	0.14	30,33,37,38	16
4	PLP	D	1469[A]	15/16	0.96	0.11	-0.20	17,21,27,31	15
4	PLP	C	1468[A]	15/16	0.96	0.12	-0.28	29,32,36,37	15
3	EDO	A	1028	4/4	0.98	0.11	-0.56	33,33,35,38	0
2	SO4	B	1009	5/5	0.94	0.22	-	88,88,89,89	0
2	SO4	C	1010	5/5	0.91	0.19	-	86,86,87,87	0
2	SO4	B	1008	5/5	0.94	0.24	-	88,88,89,89	0
2	SO4	A	1007	5/5	0.96	0.19	-	63,64,64,65	0
2	SO4	C	1004	5/5	0.84	0.22	-	91,92,93,93	0
2	SO4	D	1006	5/5	0.84	0.23	-	101,101,101,102	0
2	SO4	C	1011	5/5	0.87	0.30	-	109,110,110,110	0
2	SO4	B	1002	5/5	0.93	0.21	-	99,99,99,100	0
2	SO4	B	1003	5/5	0.86	0.25	-	95,95,96,97	0
2	SO4	A	1001	5/5	0.94	0.22	-	93,94,95,95	0
2	SO4	D	1005	5/5	0.83	0.20	-	93,94,95,95	0

6.5 Other polymers

There are no such residues in this entry.