



Full wwPDB X-ray Structure Validation Report ⓘ

Feb 1, 2016 – 01:09 PM GMT

PDB ID : 3T34
Title : Arabidopsis thaliana dynamin-related protein 1A (AtDRP1A) in prefission state
Authors : Yan, L.M.; Ma, Y.Y.; Sun, Y.N.; Lou, Z.Y.
Deposited on : 2011-07-24
Resolution : 2.40 Å(reported)

This is a Full wwPDB X-ray Structure Validation Report for a publicly released PDB entry.
We welcome your comments at validation@mail.wwpdb.org
A user guide is available at
<http://wwpdb.org/validation/2016/XrayValidationReportHelp>
with specific help available everywhere you see the ⓘ symbol.

The following versions of software and data (see [references ⓘ](#)) were used in the production of this report:

MolProbity : 4.02b-467
Mogul : 1.7 (RC4), CSD as536be (2015)
Xtriage (Phenix) : 1.9-1692
EDS : rb-20026688
Percentile statistics : 20151230.v01 (using entries in the PDB archive December 30th 2015)
Refmac : 5.8.0135
CCP4 : 6.5.0
Ideal geometry (proteins) : Engh & Huber (2001)
Ideal geometry (DNA, RNA) : Parkinson et al. (1996)
Validation Pipeline (wwPDB-VP) : trunk26865

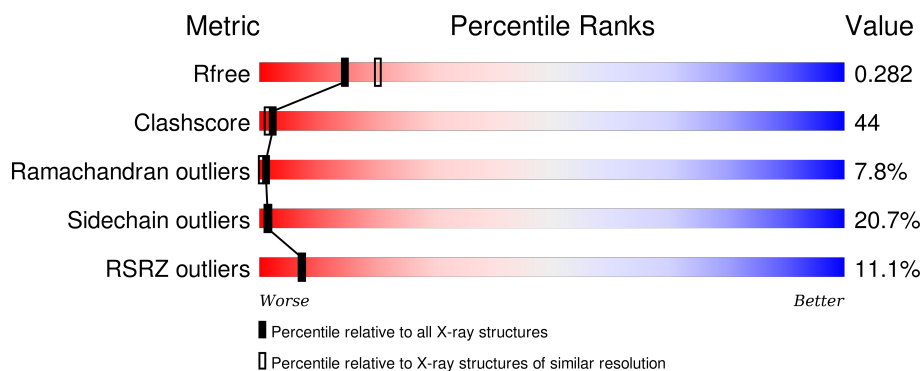
1 Overall quality at a glance

The following experimental techniques were used to determine the structure:

X-RAY DIFFRACTION

The reported resolution of this entry is 2.40 Å.

Percentile scores (ranging between 0-100) for global validation metrics of the entry are shown in the following graphic. The table shows the number of entries on which the scores are based.



Metric	Whole archive (#Entries)	Similar resolution (#Entries, resolution range(Å))
R_{free}	91344	2919 (2.40-2.40)
Clashscore	102246	3407 (2.40-2.40)
Ramachandran outliers	100387	3351 (2.40-2.40)
Sidechain outliers	100360	3352 (2.40-2.40)
RSRZ outliers	91569	2928 (2.40-2.40)

The table below summarises the geometric issues observed across the polymeric chains and their fit to the electron density. The red, orange, yellow and green segments on the lower bar indicate the fraction of residues that contain outliers for ≥ 3 , 2, 1 and 0 types of geometric quality criteria. A grey segment represents the fraction of residues that are not modelled. The numeric value for each fraction is indicated below the corresponding segment, with a dot representing fractions $\leq 5\%$. The upper red bar (where present) indicates the fraction of residues that have poor fit to the electron density. The numeric value is given above the bar.

Mol	Chain	Length	Quality of chain
1	A	360	
1	B	360	

The following table lists non-polymeric compounds, carbohydrate monomers and non-standard residues in protein, DNA, RNA chains that are outliers for geometric or electron-density-fit criteria:

Mol	Type	Chain	Res	Chirality	Geometry	Clashes	Electron density
3	ALF	A	1001	-	-	X	-
3	ALF	B	1001	-	-	X	-
4	MG	A	1002	-	-	-	X

2 Entry composition [i](#)

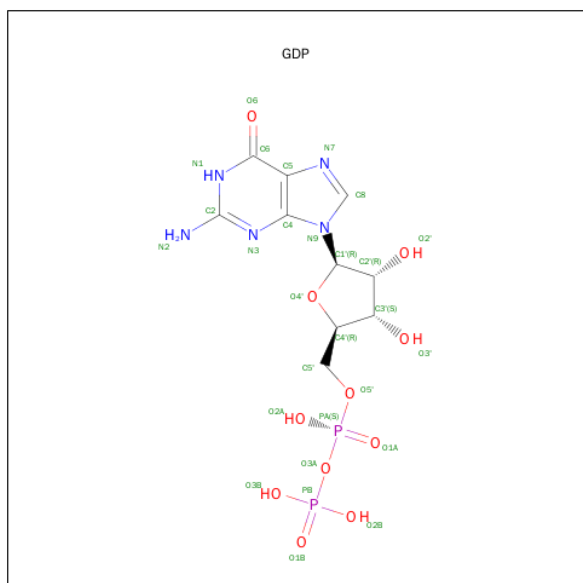
There are 6 unique types of molecules in this entry. The entry contains 5705 atoms, of which 0 are hydrogens and 0 are deuteriums.

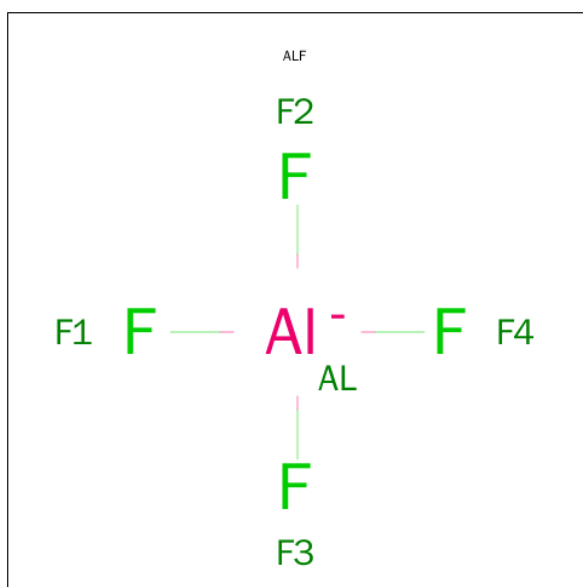
In the tables below, the ZeroOcc column contains the number of atoms modelled with zero occupancy, the AltConf column contains the number of residues with at least one atom in alternate conformation and the Trace column contains the number of residues modelled with at most 2 atoms.

- Molecule 1 is a protein called Dynamin-related protein 1A, LINKER, Dynamin-related protein 1A.

Mol	Chain	Residues	Atoms					ZeroOcc	AltConf	Trace
1	A	335	Total	C	N	O	S	0	0	0
			2607	1627	467	505	8			
1	B	341	Total	C	N	O	S	0	0	0
			2655	1662	474	510	9			

- Molecule 2 is GUANOSINE-5'-DIPHOSPHATE (three-letter code: GDP) (formula: $C_{10}H_{15}N_5O_{11}P_2$).





Mol	Chain	Residues	Atoms			ZeroOcc	AltConf
3	A	1	Total	Al	F	0	0
			5	1	4		
3	B	1	Total	Al	F	0	0
			5	1	4		

- Molecule 4 is MAGNESIUM ION (three-letter code: MG) (formula: Mg).

Mol	Chain	Residues	Atoms		ZeroOcc	AltConf
4	B	1	Total	Mg	0	0
			1	1		
4	A	1	Total	Mg	0	0
			1	1		

- Molecule 5 is SODIUM ION (three-letter code: NA) (formula: Na).

Mol	Chain	Residues	Atoms		ZeroOcc	AltConf
5	B	1	Total	Na	0	0
			1	1		
5	A	1	Total	Na	0	0
			1	1		

- Molecule 6 is water.

Mol	Chain	Residues	Atoms		ZeroOcc	AltConf
6	A	178	Total	O	0	0
			178	178		

Continued on next page...

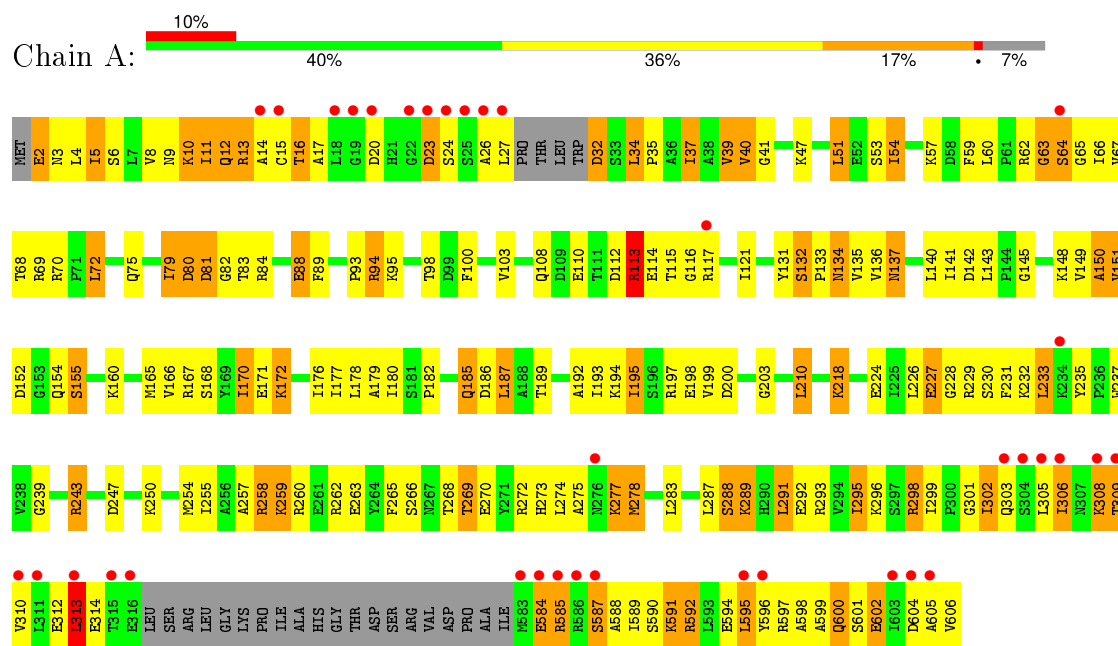
Continued from previous page...

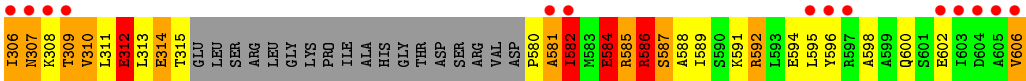
Mol	Chain	Residues	Atoms		ZeroOcc	AltConf
6	B	195	Total 195	O 195	0	0

3 Residue-property plots

These plots are drawn for all protein, RNA and DNA chains in the entry. The first graphic for a chain summarises the proportions of errors displayed in the second graphic. The second graphic shows the sequence view annotated by issues in geometry and electron density. Residues are color-coded according to the number of geometric quality criteria for which they contain at least one outlier: green = 0, yellow = 1, orange = 2 and red = 3 or more. A red dot above a residue indicates a poor fit to the electron density ($RSRZ > 2$). Stretches of 2 or more consecutive residues without any outlier are shown as a green connector. Residues present in the sample, but not in the model, are shown in grey.

- Molecule 1: Dynamin-related protein 1A, LINKER, Dynamin-related protein 1A





4 Data and refinement statistics

Property	Value	Source
Space group	P 1 21 1	Depositor
Cell constants a, b, c, α , β , γ	53.47Å 86.41Å 88.48Å 90.00° 90.55° 90.00°	Depositor
Resolution (Å)	40.31 – 2.40 40.31 – 2.40	Depositor EDS
% Data completeness (in resolution range)	99.2 (40.31-2.40) 94.7 (40.31-2.40)	Depositor EDS
R_{merge}	(Not available)	Depositor
R_{sym}	(Not available)	Depositor
$\langle I/\sigma(I) \rangle$ ¹	6.67 (at 2.39Å)	Xtriage
Refinement program	PHENIX (phenix.refine: 1.7.1_743)	Depositor
R, R_{free}	0.236 , 0.284 0.251 , 0.282	Depositor DCC
R_{free} test set	1475 reflections (4.96%)	DCC
Wilson B-factor (Å ²)	50.7	Xtriage
Anisotropy	0.369	Xtriage
Bulk solvent k_{sol} (e/Å ³), B_{sol} (Å ²)	0.28 , 67.5	EDS
Estimated twinning fraction	0.000 for -h,l,k 0.009 for -h,-l,-k 0.032 for h,-k,-l	Xtriage
L-test for twinning ²	$\langle L \rangle = 0.49$, $\langle L^2 \rangle = 0.33$	Xtriage
Outliers	0 of 31196 reflections	Xtriage
F_o, F_c correlation	0.93	EDS
Total number of atoms	5705	wwPDB-VP
Average B, all atoms (Å ²)	65.0	wwPDB-VP

Xtriage's analysis on translational NCS is as follows: *The largest off-origin peak in the Patterson function is 5.05% of the height of the origin peak. No significant pseudotranslation is detected.*

¹Intensities estimated from amplitudes.

²Theoretical values of $\langle |L| \rangle$, $\langle L^2 \rangle$ for acentric reflections are 0.5, 0.375 respectively for untwinned datasets, and 0.333, 0.2 for perfectly twinned datasets.

5 Model quality [i](#)

5.1 Standard geometry [i](#)

Bond lengths and bond angles in the following residue types are not validated in this section: GDP, ALF, MG, NA

The Z score for a bond length (or angle) is the number of standard deviations the observed value is removed from the expected value. A bond length (or angle) with $|Z| > 5$ is considered an outlier worth inspection. RMSZ is the root-mean-square of all Z scores of the bond lengths (or angles).

Mol	Chain	Bond lengths		Bond angles	
		RMSZ	$\# Z > 5$	RMSZ	$\# Z > 5$
1	A	0.49	0/2638	0.71	0/3554
1	B	0.49	0/2689	0.68	1/3625 (0.0%)
All	All	0.49	0/5327	0.69	1/7179 (0.0%)

Chiral center outliers are detected by calculating the chiral volume of a chiral center and verifying if the center is modelled as a planar moiety or with the opposite hand. A planarity outlier is detected by checking planarity of atoms in a peptide group, atoms in a mainchain group or atoms of a sidechain that are expected to be planar.

Mol	Chain	#Chirality outliers	#Planarity outliers
1	A	0	2
1	B	0	2
All	All	0	4

There are no bond length outliers.

All (1) bond angle outliers are listed below:

Mol	Chain	Res	Type	Atoms	Z	Observed(°)	Ideal(°)
1	B	63	GLY	N-CA-C	-7.32	94.81	113.10

There are no chirality outliers.

All (4) planarity outliers are listed below:

Mol	Chain	Res	Type	Group
1	A	268	THR	Peptide
1	A	63	GLY	Peptide
1	B	299	ILE	Peptide
1	B	63	GLY	Peptide

5.2 Too-close contacts ⓘ

In the following table, the Non-H and H(model) columns list the number of non-hydrogen atoms and hydrogen atoms in the chain respectively. The H(added) column lists the number of hydrogen atoms added and optimized by MolProbity. The Clashes column lists the number of clashes within the asymmetric unit, whereas Symm-Clashes lists symmetry related clashes.

Mol	Chain	Non-H	H(model)	H(added)	Clashes	Symm-Clashes
1	A	2607	0	2678	218	0
1	B	2655	0	2737	259	0
2	A	28	0	12	2	0
2	B	28	0	12	3	0
3	A	5	0	0	2	0
3	B	5	0	0	3	0
4	A	1	0	0	0	0
4	B	1	0	0	0	0
5	A	1	0	0	0	0
5	B	1	0	0	0	0
6	A	178	0	0	32	0
6	B	195	0	0	42	0
All	All	5705	0	5439	473	0

The all-atom clashscore is defined as the number of clashes found per 1000 atoms (including hydrogen atoms). The all-atom clashscore for this structure is 44.

All (473) close contacts within the same asymmetric unit are listed below, sorted by their clash magnitude.

Atom-1	Atom-2	Interatomic distance (Å)	Clash overlap (Å)
1:B:111:THR:O	1:B:115:THR:HG23	1.43	1.16
1:A:151:VAL:HG22	1:A:152:ASP:H	1.07	1.13
1:A:243:ARG:NH2	1:A:254:MET:SD	2.21	1.12
1:A:57:LYS:HB2	6:A:1085:HOH:O	1.54	1.02
1:B:585:ARG:O	1:B:587:SER:N	1.93	1.02
1:B:302:ILE:O	1:B:303:GLN:NE2	1.92	1.00
1:A:2:GLU:N	1:A:3:ASN:HB2	1.76	1.00
1:A:12:GLN:HG2	1:A:13:ARG:H	1.23	1.00
1:B:170:ILE:HG23	1:B:199:VAL:HG21	1.43	0.99
1:A:2:GLU:OE2	6:A:1034:HOH:O	1.81	0.98
1:A:312:GLU:O	1:A:584:GLU:OE1	1.81	0.98
1:A:197:ARG:HH21	1:A:231:PHE:HE1	1.08	0.96
1:A:8:VAL:HG11	1:A:295:ILE:HD11	1.45	0.95
1:B:231:PHE:HB2	6:B:338:HOH:O	1.64	0.95
1:A:116:GLY:HA3	6:A:1076:HOH:O	1.66	0.94

Continued on next page...

Continued from previous page...

Atom-1	Atom-2	Interatomic distance (Å)	Clash overlap (Å)
1:A:114:GLU:HB2	6:A:1074:HOH:O	1.69	0.93
1:B:582:ILE:N	1:B:584:GLU:OE2	2.06	0.89
1:B:76:LEU:HA	6:B:1038:HOH:O	1.73	0.89
1:A:585:ARG:NH1	1:A:587:SER:OG	2.07	0.88
1:A:151:VAL:HG22	1:A:152:ASP:N	1.87	0.87
1:B:76:LEU:HD23	1:B:76:LEU:H	1.37	0.87
1:B:285:LYS:NZ	1:B:286:MET:HG2	1.89	0.86
1:B:12:GLN:O	1:B:14:ALA:N	2.10	0.84
1:A:277:LYS:O	1:A:278:MET:HG3	1.76	0.84
1:B:585:ARG:HG2	1:B:589:ILE:HD11	1.57	0.84
1:B:216:MET:N	6:B:1028:HOH:O	2.09	0.84
1:A:291:LEU:H	1:A:291:LEU:HD22	1.42	0.83
1:B:585:ARG:NH2	6:B:1035:HOH:O	2.12	0.83
1:A:82:GLY:O	1:A:84:ARG:N	2.10	0.83
1:B:581:ALA:C	1:B:582:ILE:HG13	1.99	0.82
1:A:303:GLN:NE2	6:A:1120:HOH:O	2.12	0.81
1:B:17:ALA:O	1:B:19:GLY:N	2.14	0.80
1:B:285:LYS:HZ1	1:B:286:MET:HG2	1.46	0.80
1:A:16:THR:HG22	1:A:595:LEU:HD22	1.62	0.80
1:A:170:ILE:HG23	1:A:199:VAL:HG21	1.64	0.79
1:B:247:ASP:HB3	1:B:252:VAL:CG2	2.12	0.79
1:A:203:GLY:O	6:A:337:HOH:O	2.00	0.78
1:B:61:PRO:HB3	1:B:108:GLN:HE21	1.47	0.78
1:A:278:MET:HB2	6:A:1124:HOH:O	1.82	0.78
1:B:85:GLU:OE2	1:B:132:SER:OG	2.01	0.78
1:B:15:CYS:HA	1:B:595:LEU:HD22	1.64	0.77
1:A:227:GLU:OE2	1:A:273:HIS:NE2	2.16	0.77
1:B:270:GLU:N	1:B:270:GLU:OE2	2.16	0.77
1:A:64:SER:HB2	1:A:65:GLY:HA3	1.67	0.76
1:A:64:SER:CB	1:A:65:GLY:HA3	2.15	0.76
1:B:586:ARG:HG3	1:B:587:SER:N	1.97	0.76
1:B:591:LYS:HB2	1:B:591:LYS:NZ	2.01	0.75
1:A:41:GLY:HA2	1:A:192:ALA:HB2	1.69	0.75
1:B:45:SER:HB2	1:B:182:PRO:HD3	1.66	0.74
1:A:110:GLU:O	6:A:1074:HOH:O	2.06	0.74
1:B:155:SER:N	6:B:1112:HOH:O	2.13	0.74
1:B:47:LYS:HG2	1:B:180:ILE:HD12	1.67	0.74
1:B:264:TYR:O	1:B:268:THR:HG23	1.87	0.74
1:A:151:VAL:CG2	1:A:152:ASP:H	1.91	0.74
1:B:247:ASP:HB3	1:B:252:VAL:HG22	1.70	0.74
1:A:63:GLY:O	2:A:1000:GDP:H5"	1.88	0.74

Continued on next page...

Continued from previous page...

Atom-1	Atom-2	Interatomic distance (Å)	Clash overlap (Å)
1:A:197:ARG:NH2	1:A:231:PHE:HE1	1.86	0.73
1:B:19:GLY:O	1:B:21:HIS:N	2.19	0.73
1:A:79:ILE:O	1:A:81:ASP:N	2.23	0.72
1:B:143:LEU:O	6:B:1006:HOH:O	2.06	0.72
1:B:296:LYS:HE2	1:B:606:VAL:HG23	1.71	0.72
1:A:254:MET:HG2	6:A:1064:HOH:O	1.89	0.72
1:A:239:GLY:H	1:A:278:MET:HG2	1.53	0.72
1:A:12:GLN:HG2	1:A:13:ARG:N	2.00	0.71
1:A:596:TYR:O	1:A:600:GLN:HB2	1.89	0.71
1:A:2:GLU:N	1:A:3:ASN:CB	2.51	0.71
1:B:142:ASP:OD1	6:B:1006:HOH:O	2.09	0.71
1:B:187:LEU:HD23	6:B:338:HOH:O	1.90	0.71
1:B:591:LYS:HB2	1:B:591:LYS:HZ2	1.56	0.70
1:B:185:GLN:HG2	1:B:186:ASP:N	2.06	0.70
1:B:30:LEU:O	1:B:33:SER:N	2.19	0.70
1:A:584:GLU:O	6:A:1083:HOH:O	2.09	0.69
1:B:62:ARG:NH1	6:B:1070:HOH:O	2.21	0.69
1:A:151:VAL:O	1:A:154:GLN:HG2	1.92	0.69
1:A:193:ILE:HG22	1:B:149:VAL:HG11	1.74	0.68
1:B:154:GLN:HA	6:B:1112:HOH:O	1.93	0.68
1:A:5:ILE:O	1:A:9:ASN:ND2	2.25	0.68
1:B:44:SER:N	3:B:1001:ALF:F3	2.17	0.68
1:A:182:PRO:HG2	1:A:185:GLN:CG	2.23	0.68
1:A:10:LYS:HA	1:A:14:ALA:HB3	1.76	0.68
1:B:6:SER:O	1:B:10:LYS:HB2	1.94	0.68
1:B:309:THR:O	1:B:313:LEU:N	2.22	0.67
1:B:34:LEU:H	1:B:35:PRO:HD3	1.58	0.67
1:A:299:ILE:C	1:A:301:GLY:H	1.98	0.67
1:A:2:GLU:N	1:A:2:GLU:OE1	2.27	0.67
1:B:292:GLU:O	1:B:295:ILE:HG13	1.94	0.67
1:B:95:LYS:HD2	1:B:97:PHE:CZ	2.30	0.67
1:B:151:VAL:HG22	1:B:152:ASP:N	2.10	0.66
1:B:32:ASP:HA	1:B:35:PRO:HD3	1.77	0.66
1:B:259:LYS:HE3	1:B:259:LYS:HA	1.76	0.66
1:A:88:GLU:OE1	6:A:1022:HOH:O	2.12	0.66
1:A:115:THR:HA	6:A:1029:HOH:O	1.96	0.66
1:B:185:GLN:HG3	1:B:189:THR:OG1	1.95	0.66
1:A:288:SER:O	1:A:291:LEU:CD2	2.44	0.66
1:B:15:CYS:SG	1:B:598:ALA:HB3	2.35	0.65
1:B:243:ARG:CD	1:B:252:VAL:HG23	2.27	0.65
1:A:11:ILE:HD13	1:A:602:GLU:HB3	1.78	0.65

Continued on next page...

Continued from previous page...

Atom-1	Atom-2	Interatomic distance (Å)	Clash overlap (Å)
1:A:149:VAL:O	1:A:150:ALA:CB	2.46	0.64
1:A:197:ARG:NH2	1:A:231:PHE:CE1	2.64	0.64
1:A:165:MET:O	1:A:168:SER:OG	2.15	0.64
1:B:584:GLU:HA	6:B:1061:HOH:O	1.98	0.64
1:B:32:ASP:C	1:B:35:PRO:HD3	2.18	0.64
1:B:34:LEU:H	1:B:35:PRO:CD	2.10	0.63
1:A:148:LYS:HE2	1:B:148:LYS:HE2	1.80	0.63
1:A:16:THR:HG22	1:A:595:LEU:HA	1.80	0.63
1:B:32:ASP:HB2	1:B:298:ARG:NH1	2.14	0.63
1:B:310:VAL:O	1:B:314:GLU:HB2	1.98	0.63
1:A:254:MET:CG	6:A:1064:HOH:O	2.46	0.62
1:A:108:GLN:HG3	6:A:1131:HOH:O	2.00	0.62
1:B:264:TYR:OH	6:B:1078:HOH:O	2.13	0.62
1:B:265:PHE:CE2	1:B:278:MET:HE3	2.35	0.62
1:A:148:LYS:NZ	6:B:1098:HOH:O	2.26	0.62
1:B:581:ALA:O	1:B:582:ILE:HG13	1.99	0.62
1:A:291:LEU:HD22	1:A:291:LEU:N	2.10	0.62
1:B:285:LYS:HD3	1:B:286:MET:N	2.15	0.62
1:A:39:VAL:HG12	1:A:180:ILE:HD11	1.81	0.62
1:A:8:VAL:CG1	1:A:295:ILE:HD11	2.26	0.62
1:A:288:SER:HA	1:A:291:LEU:HD21	1.82	0.62
1:A:10:LYS:O	1:A:12:GLN:N	2.32	0.62
1:B:155:SER:OG	1:B:156:ASP:N	2.32	0.62
1:A:182:PRO:HG2	1:A:185:GLN:HG2	1.82	0.62
1:B:77:GLN:HG3	1:B:131:TYR:CE1	2.35	0.61
1:A:259:LYS:HA	1:A:259:LYS:HE3	1.82	0.61
1:B:76:LEU:HD23	1:B:138:LEU:O	2.00	0.61
1:B:17:ALA:C	1:B:19:GLY:H	2.01	0.61
1:B:46:GLY:HA2	2:B:1000:GDP:O3A	2.00	0.61
1:A:258:ARG:HH11	1:A:258:ARG:HB2	1.66	0.61
1:A:195:ILE:HA	1:A:198:GLU:CG	2.31	0.61
1:B:76:LEU:HD23	1:B:76:LEU:N	2.14	0.61
1:B:308:LYS:O	1:B:309:THR:OG1	2.14	0.61
1:B:306:ILE:HG12	1:B:596:TYR:OH	2.01	0.61
1:A:291:LEU:HD23	1:A:292:GLU:N	2.16	0.61
1:B:170:ILE:CG2	1:B:199:VAL:HG11	2.31	0.61
1:B:308:LYS:HG2	1:B:592:ARG:NH1	2.15	0.60
1:A:312:GLU:O	1:A:584:GLU:CD	2.39	0.60
1:B:149:VAL:O	1:B:150:ALA:CB	2.49	0.60
1:A:69:ARG:NH1	1:A:115:THR:OG1	2.34	0.60
1:A:591:LYS:O	1:A:595:LEU:HD23	2.01	0.60

Continued on next page...

Continued from previous page...

Atom-1	Atom-2	Interatomic distance (Å)	Clash overlap (Å)
1:B:19:GLY:HA3	1:B:595:LEU:HD11	1.84	0.60
1:B:591:LYS:O	1:B:595:LEU:HG	2.02	0.60
1:A:598:ALA:C	1:A:600:GLN:H	2.04	0.60
1:B:305:LEU:O	1:B:308:LYS:N	2.35	0.59
1:A:16:THR:CG2	1:A:595:LEU:HA	2.32	0.59
1:B:285:LYS:HZ3	1:B:286:MET:HG2	1.66	0.59
1:A:296:LYS:O	1:A:299:ILE:HG12	2.01	0.59
1:B:61:PRO:HG2	6:B:1053:HOH:O	2.01	0.59
1:A:308:LYS:O	1:A:310:VAL:N	2.35	0.59
1:B:292:GLU:HA	1:B:295:ILE:HD11	1.84	0.59
1:A:151:VAL:CG2	1:A:152:ASP:N	2.59	0.59
1:A:293:ARG:CG	1:A:606:VAL:HG11	2.32	0.59
1:A:121:ILE:O	1:A:121:ILE:HD12	2.02	0.58
1:B:308:LYS:HG2	1:B:592:ARG:CZ	2.32	0.58
1:B:31:TRP:O	1:B:34:LEU:N	2.37	0.58
1:A:37:ILE:CD1	1:A:287:LEU:HD13	2.34	0.58
1:A:598:ALA:HB2	6:A:1024:HOH:O	2.03	0.58
1:A:296:LYS:NZ	1:A:605:ALA:HB3	2.19	0.58
1:B:187:LEU:HD22	1:B:225:ILE:HD13	1.84	0.58
1:A:32:ASP:N	6:A:1109:HOH:O	2.37	0.58
1:B:272:ARG:NE	6:B:1010:HOH:O	2.31	0.58
1:A:229:ARG:O	1:A:232:LYS:HE3	2.04	0.57
1:A:189:THR:O	1:B:148:LYS:NZ	2.34	0.57
1:A:54:ILE:HD11	1:A:283:LEU:HD23	1.86	0.57
1:A:299:ILE:O	1:A:301:GLY:N	2.37	0.57
1:A:195:ILE:HA	1:A:198:GLU:HG2	1.86	0.57
1:A:239:GLY:H	1:A:278:MET:CG	2.18	0.57
1:A:598:ALA:O	1:A:600:GLN:N	2.32	0.57
1:B:114:GLU:OE1	1:B:122:SER:CB	2.53	0.57
1:B:250:LYS:NZ	6:B:1113:HOH:O	2.37	0.57
1:B:285:LYS:HE2	1:B:286:MET:HA	1.87	0.57
1:B:187:LEU:HD22	1:B:225:ILE:CD1	2.35	0.57
1:A:259:LYS:HZ1	1:A:262:ARG:CZ	2.16	0.57
1:A:67:VAL:N	3:A:1001:ALF:F1	2.21	0.57
1:B:178:LEU:O	1:B:180:ILE:HG13	2.05	0.56
1:B:296:LYS:HD3	1:B:606:VAL:HG23	1.87	0.56
1:B:84:ARG:NH2	1:B:96:LYS:NZ	2.52	0.56
1:A:292:GLU:O	1:A:295:ILE:HD13	2.06	0.56
1:B:247:ASP:HB3	1:B:252:VAL:HG21	1.85	0.56
1:B:243:ARG:HD3	1:B:252:VAL:HG23	1.88	0.56
1:B:63:GLY:O	2:B:1000:GDP:H5"	2.05	0.56

Continued on next page...

Continued from previous page...

Atom-1	Atom-2	Interatomic distance (Å)	Clash overlap (Å)
1:B:34:LEU:N	1:B:35:PRO:CD	2.69	0.56
1:B:126:ILE:N	6:B:1060:HOH:O	2.37	0.56
1:A:239:GLY:N	1:A:278:MET:HG2	2.19	0.56
1:A:167:ARG:NH2	1:A:198:GLU:HB3	2.21	0.56
1:B:114:GLU:OE1	1:B:124:VAL:HG23	2.06	0.56
1:A:8:VAL:O	1:A:12:GLN:OE1	2.25	0.55
1:B:32:ASP:HB2	1:B:298:ARG:CZ	2.36	0.55
1:B:263:GLU:O	1:B:267:ASN:HB2	2.06	0.55
1:A:13:ARG:NH2	6:A:1036:HOH:O	2.40	0.55
1:A:277:LYS:HB2	1:A:277:LYS:NZ	2.21	0.55
1:A:309:THR:HG22	1:A:592:ARG:HG2	1.88	0.55
1:A:259:LYS:HA	1:A:259:LYS:CE	2.37	0.55
1:B:12:GLN:C	1:B:14:ALA:N	2.58	0.55
1:A:296:LYS:HZ2	1:A:606:VAL:HG23	1.72	0.55
1:B:149:VAL:O	1:B:150:ALA:HB2	2.07	0.55
1:B:39:VAL:HB	1:B:180:ILE:HD12	1.89	0.55
1:A:193:ILE:O	1:A:197:ARG:HG2	2.07	0.54
1:B:32:ASP:CA	1:B:35:PRO:HD3	2.36	0.54
1:A:151:VAL:HG22	6:B:1077:HOH:O	2.07	0.54
1:A:60:LEU:HD21	1:A:72:LEU:HD22	1.90	0.54
1:B:136:VAL:HG23	6:B:371:HOH:O	2.06	0.54
1:B:20:ASP:C	1:B:22:GLY:H	2.11	0.54
1:B:591:LYS:CB	1:B:591:LYS:NZ	2.70	0.54
1:B:310:VAL:HG12	1:B:314:GLU:OE1	2.07	0.54
1:A:143:LEU:HD13	1:A:166:VAL:HG13	1.90	0.54
1:B:83:THR:HA	1:B:133:PRO:HG3	1.90	0.54
1:A:287:LEU:O	1:A:291:LEU:HD22	2.08	0.53
1:B:79:ILE:HD12	1:B:82:GLY:O	2.08	0.53
1:A:81:ASP:HA	1:A:133:PRO:HB3	1.91	0.53
1:B:16:THR:OG1	1:B:17:ALA:N	2.41	0.53
1:B:39:VAL:HB	1:B:180:ILE:CD1	2.39	0.53
1:A:588:ALA:O	1:A:592:ARG:HD2	2.09	0.53
1:A:178:LEU:O	1:A:180:ILE:HD12	2.08	0.53
1:B:598:ALA:HB2	6:B:1092:HOH:O	2.08	0.53
1:B:292:GLU:HB3	1:B:606:VAL:HG21	1.91	0.53
1:A:296:LYS:NZ	1:A:606:VAL:HG23	2.24	0.53
1:B:82:GLY:O	1:B:84:ARG:N	2.42	0.53
1:A:51:LEU:HD12	1:A:142:ASP:HB2	1.90	0.53
1:B:20:ASP:OD1	1:B:305:LEU:HD23	2.08	0.52
1:A:299:ILE:C	1:A:301:GLY:N	2.62	0.52
1:B:89:PHE:HB3	1:B:91:HIS:CD2	2.43	0.52

Continued on next page...

Continued from previous page...

Atom-1	Atom-2	Interatomic distance (Å)	Clash overlap (Å)
1:A:218:LYS:NZ	6:A:394:HOH:O	2.40	0.52
1:B:312:GLU:HA	1:B:315:THR:OG1	2.08	0.52
1:B:202:SER:O	1:B:234:LYS:HE3	2.09	0.52
1:A:149:VAL:O	1:A:150:ALA:HB2	2.09	0.52
1:B:299:ILE:C	1:B:301:GLY:H	2.11	0.52
1:A:167:ARG:HH21	1:A:198:GLU:HB3	1.72	0.52
1:A:233:LEU:HD22	1:A:237:TRP:NE1	2.24	0.52
1:B:591:LYS:HA	1:B:594:GLU:CG	2.40	0.52
1:B:11:ILE:HG22	1:B:602:GLU:OE2	2.10	0.52
1:A:291:LEU:HD23	1:A:292:GLU:H	1.75	0.52
1:A:115:THR:OG1	1:A:116:GLY:N	2.42	0.52
1:B:585:ARG:N	6:B:610:HOH:O	2.43	0.52
1:B:62:ARG:HA	1:B:67:VAL:HG21	1.92	0.52
1:B:303:GLN:H	1:B:305:LEU:H	1.58	0.51
1:A:66:ILE:O	1:A:66:ILE:HG23	2.09	0.51
1:A:11:ILE:HG21	1:A:602:GLU:HG2	1.92	0.51
1:A:278:MET:CE	6:A:1124:HOH:O	2.58	0.51
1:A:291:LEU:CD2	1:A:291:LEU:N	2.73	0.51
1:B:157:SER:O	1:B:160:LYS:N	2.43	0.51
1:A:47:LYS:HE3	1:A:145:GLY:HA2	1.93	0.51
1:A:296:LYS:HZ2	1:A:605:ALA:HB3	1.75	0.51
1:B:89:PHE:CE2	1:B:128:LEU:HD13	2.45	0.51
1:B:589:ILE:HG13	6:B:1103:HOH:O	2.09	0.51
1:B:129:SER:HA	6:B:1038:HOH:O	2.11	0.51
1:A:16:THR:OG1	1:A:598:ALA:CB	2.59	0.51
1:B:289:LYS:HG3	1:B:606:VAL:HG11	1.93	0.51
1:B:269:THR:O	6:B:1047:HOH:O	2.19	0.51
1:A:82:GLY:C	1:A:84:ARG:N	2.64	0.51
1:B:154:GLN:O	1:B:155:SER:O	2.29	0.51
1:B:70:ARG:NE	1:B:124:VAL:O	2.33	0.51
1:B:295:ILE:C	1:B:297:SER:N	2.65	0.50
1:A:64:SER:HA	6:A:335:HOH:O	2.10	0.50
1:B:295:ILE:O	1:B:297:SER:N	2.45	0.50
1:B:95:LYS:HD2	1:B:97:PHE:CE1	2.45	0.50
1:A:259:LYS:NZ	1:A:262:ARG:CZ	2.74	0.50
1:B:69:ARG:HD2	1:B:120:ALA:O	2.12	0.50
1:B:47:LYS:HA	1:B:180:ILE:HD13	1.94	0.50
1:A:310:VAL:C	1:A:312:GLU:H	2.15	0.50
1:B:61:PRO:HG2	6:B:1036:HOH:O	2.12	0.50
1:B:79:ILE:HG13	1:B:133:PRO:CA	2.42	0.50
1:A:121:ILE:C	1:A:121:ILE:HD12	2.32	0.50

Continued on next page...

Continued from previous page...

Atom-1	Atom-2	Interatomic distance (Å)	Clash overlap (Å)
1:B:84:ARG:NH2	1:B:96:LYS:HZ2	2.09	0.50
1:A:266:SER:O	1:A:272:ARG:NH1	2.45	0.50
1:A:37:ILE:HD12	1:A:287:LEU:HD13	1.94	0.50
1:B:582:ILE:HD12	6:B:1034:HOH:O	2.12	0.49
1:B:151:VAL:CG2	1:B:152:ASP:N	2.76	0.49
1:B:591:LYS:HA	1:B:594:GLU:HG3	1.93	0.49
1:B:591:LYS:O	1:B:594:GLU:HG3	2.13	0.49
1:A:80:ASP:O	1:A:81:ASP:C	2.51	0.49
1:A:598:ALA:HA	1:A:601:SER:OG	2.12	0.49
1:B:37:ILE:HB	1:B:140:LEU:CD2	2.43	0.49
1:B:585:ARG:HA	6:B:610:HOH:O	2.12	0.49
1:A:11:ILE:O	1:A:11:ILE:CG2	2.60	0.49
1:A:82:GLY:O	1:A:84:ARG:HG2	2.13	0.49
1:B:79:ILE:H	1:B:133:PRO:HA	1.77	0.49
1:A:298:ARG:NH1	6:A:1106:HOH:O	2.44	0.49
1:B:34:LEU:O	1:B:35:PRO:C	2.51	0.49
1:B:97:PHE:HB3	6:B:1069:HOH:O	2.12	0.49
1:B:251:ASN:HA	6:B:1107:HOH:O	2.12	0.49
1:A:243:ARG:HD3	1:A:257:ALA:HB2	1.95	0.49
1:B:585:ARG:HG3	6:B:1103:HOH:O	2.13	0.48
1:A:93:PRO:O	1:A:94:ARG:HB2	2.11	0.48
1:B:585:ARG:CG	6:B:1103:HOH:O	2.62	0.48
1:B:58:ASP:HB3	1:B:104:ARG:HH21	1.78	0.48
1:A:592:ARG:O	1:A:596:TYR:HD2	1.97	0.48
1:B:95:LYS:C	1:B:95:LYS:HD3	2.33	0.48
1:A:293:ARG:HG2	1:A:606:VAL:HG11	1.95	0.48
1:A:39:VAL:HG12	1:A:180:ILE:CD1	2.44	0.48
1:B:1:MET:HG3	1:B:288:SER:HB3	1.95	0.48
1:B:312:GLU:HG2	1:B:312:GLU:O	2.12	0.48
1:B:8:VAL:O	1:B:12:GLN:HG3	2.13	0.48
1:B:295:ILE:C	1:B:297:SER:H	2.17	0.48
1:B:306:ILE:O	1:B:309:THR:HB	2.14	0.48
1:A:182:PRO:HG2	1:A:185:GLN:HG3	1.96	0.48
1:A:224:GLU:HG3	1:A:229:ARG:HD2	1.96	0.47
1:A:16:THR:HG21	1:A:594:GLU:O	2.14	0.47
1:B:152:ASP:CG	1:B:153:GLY:H	2.16	0.47
1:B:90:LEU:HB3	1:B:127:HIS:HB2	1.96	0.47
1:B:305:LEU:O	1:B:307:ASN:N	2.47	0.47
1:A:259:LYS:HZ1	1:A:262:ARG:NH1	2.13	0.47
1:A:94:ARG:C	6:A:334:HOH:O	2.51	0.47
1:A:275:ALA:C	1:A:277:LYS:H	2.17	0.47

Continued on next page...

Continued from previous page...

Atom-1	Atom-2	Interatomic distance (Å)	Clash overlap (Å)
1:B:132:SER:C	1:B:134:ASN:H	2.17	0.47
1:B:265:PHE:CE2	1:B:278:MET:CE	2.98	0.47
1:B:296:LYS:CE	1:B:606:VAL:HG23	2.42	0.47
1:A:98:THR:HG22	1:A:98:THR:O	2.14	0.47
1:B:302:ILE:HG12	1:B:302:ILE:O	2.15	0.47
1:A:289:LYS:HE2	1:A:293:ARG:HH21	1.78	0.47
1:B:118:SER:C	1:B:119:LYS:HD3	2.36	0.47
1:A:24:SER:O	1:A:24:SER:OG	2.27	0.47
1:A:10:LYS:HD3	1:A:10:LYS:N	2.30	0.47
1:A:47:LYS:NZ	2:A:1000:GDP:O2B	2.38	0.47
1:A:68:THR:HB	3:A:1001:ALF:F4	2.05	0.47
1:B:11:ILE:O	1:B:11:ILE:HG22	2.15	0.47
1:B:178:LEU:HD12	1:B:207:PHE:HB2	1.97	0.47
1:A:309:THR:O	1:A:313:LEU:HD23	2.15	0.47
1:B:5:ILE:O	1:B:9:ASN:HB3	2.14	0.47
1:B:592:ARG:HG3	1:B:595:LEU:HD12	1.95	0.46
1:A:295:ILE:O	1:A:298:ARG:HB2	2.15	0.46
1:B:47:LYS:NZ	3:B:1001:ALF:F2	2.31	0.46
1:A:288:SER:O	1:A:291:LEU:HD22	2.14	0.46
1:A:170:ILE:HG13	1:A:177:ILE:HG12	1.98	0.46
1:B:74:LEU:HG	1:B:74:LEU:O	2.15	0.46
1:A:132:SER:HB3	1:A:135:VAL:HG22	1.98	0.46
1:B:307:ASN:O	1:B:311:LEU:HB2	2.15	0.46
1:B:302:ILE:CD1	1:B:600:GLN:HE22	2.29	0.46
1:B:32:ASP:HB3	1:B:294:VAL:CG1	2.45	0.46
1:B:218:LYS:HA	1:B:218:LYS:HD3	1.60	0.46
1:A:278:MET:HE2	6:A:1124:HOH:O	2.16	0.46
1:A:94:ARG:HD2	1:A:94:ARG:HA	1.72	0.46
1:B:66:ILE:HG13	1:B:119:LYS:HD2	1.98	0.46
1:B:34:LEU:HA	6:B:339:HOH:O	2.15	0.46
1:A:187:LEU:HA	1:A:187:LEU:HD12	1.67	0.46
1:B:172:LYS:HA	1:B:173:PRO:HD3	1.78	0.46
1:B:302:ILE:CD1	1:B:600:GLN:NE2	2.78	0.46
1:A:305:LEU:O	1:A:309:THR:HG23	2.15	0.46
1:A:265:PHE:CD1	6:A:1124:HOH:O	2.69	0.45
1:B:32:ASP:HB2	1:B:298:ARG:NH2	2.31	0.45
1:B:1:MET:HG3	1:B:288:SER:CB	2.46	0.45
1:A:79:ILE:CD1	1:A:131:TYR:HB3	2.46	0.45
1:B:15:CYS:O	1:B:16:THR:C	2.53	0.45
1:B:242:ASN:HB2	2:B:1000:GDP:N7	2.32	0.45
1:B:239:GLY:HA3	1:B:278:MET:CE	2.46	0.45

Continued on next page...

Continued from previous page...

Atom-1	Atom-2	Interatomic distance (Å)	Clash overlap (Å)
1:B:584:GLU:O	1:B:585:ARG:C	2.55	0.45
1:B:13:ARG:O	1:B:17:ALA:HB3	2.16	0.45
1:A:298:ARG:CZ	6:A:1106:HOH:O	2.65	0.45
1:B:10:LYS:C	1:B:12:GLN:N	2.69	0.45
1:B:295:ILE:O	1:B:298:ARG:N	2.47	0.45
1:B:226:LEU:HD13	1:B:278:MET:CE	2.46	0.45
1:B:54:ILE:HD12	1:B:284:ALA:HB2	1.98	0.45
1:B:588:ALA:HA	1:B:591:LYS:HZ2	1.81	0.45
1:B:47:LYS:HG2	1:B:180:ILE:CD1	2.41	0.45
1:A:10:LYS:C	1:A:12:GLN:N	2.70	0.45
1:B:39:VAL:HG21	1:B:47:LYS:HB3	1.98	0.45
1:B:292:GLU:CB	1:B:606:VAL:HG21	2.46	0.45
1:B:259:LYS:HE3	1:B:259:LYS:CA	2.44	0.45
1:A:227:GLU:O	1:A:229:ARG:N	2.49	0.45
1:B:39:VAL:CG2	1:B:47:LYS:HB3	2.46	0.45
1:A:23:ASP:O	1:A:24:SER:HB3	2.17	0.45
1:B:30:LEU:O	1:B:31:TRP:C	2.54	0.45
1:B:81:ASP:O	1:B:83:THR:N	2.49	0.45
1:B:586:ARG:HG3	1:B:587:SER:H	1.76	0.45
1:A:95:LYS:N	6:A:334:HOH:O	2.50	0.45
1:B:31:TRP:O	1:B:34:LEU:HB2	2.17	0.44
1:A:98:THR:CG2	1:A:98:THR:O	2.65	0.44
1:B:130:ILE:N	6:B:1038:HOH:O	2.05	0.44
1:B:70:ARG:NH1	1:B:114:GLU:HG2	2.32	0.44
1:B:580:PRO:HD3	6:B:1046:HOH:O	2.17	0.44
1:B:86:TYR:CZ	1:B:131:TYR:CD2	3.05	0.44
1:A:194:LYS:O	1:A:198:GLU:HG2	2.17	0.44
1:A:195:ILE:O	1:A:198:GLU:HB2	2.18	0.44
1:A:151:VAL:HG21	1:B:231:PHE:CD2	2.53	0.44
1:A:594:GLU:O	1:A:597:ARG:HB3	2.18	0.44
1:A:598:ALA:C	1:A:600:GLN:N	2.71	0.44
1:B:43:GLN:O	1:B:44:SER:HB2	2.16	0.44
1:A:306:ILE:HG13	1:A:596:TYR:OH	2.18	0.44
1:B:1:MET:HG2	1:B:2:GLU:N	2.33	0.44
1:A:34:LEU:HD12	1:A:34:LEU:HA	1.72	0.43
1:A:140:LEU:C	1:A:141:ILE:HG13	2.38	0.43
1:A:64:SER:CB	1:A:65:GLY:CA	2.91	0.43
1:A:235:TYR:HB2	6:A:1033:HOH:O	2.17	0.43
1:A:585:ARG:NH1	1:A:587:SER:HG	2.12	0.43
1:A:588:ALA:C	1:A:590:SER:H	2.21	0.43
1:B:74:LEU:HD23	1:B:140:LEU:HB2	2.00	0.43

Continued on next page...

Continued from previous page...

Atom-1	Atom-2	Interatomic distance (Å)	Clash overlap (Å)
1:B:105:LYS:NZ	6:B:612:HOH:O	2.43	0.43
1:B:97:PHE:HD2	6:B:1083:HOH:O	2.01	0.43
1:B:239:GLY:HA3	1:B:278:MET:HE3	2.00	0.43
1:B:113:ARG:O	1:B:113:ARG:HG2	2.18	0.43
1:A:227:GLU:CG	1:A:274:LEU:HD11	2.49	0.43
1:B:86:TYR:CE2	1:B:131:TYR:HB2	2.54	0.43
1:B:60:LEU:HD23	1:B:107:ILE:CD1	2.49	0.43
1:B:158:ILE:HA	1:B:161:ASP:HB2	2.01	0.43
1:A:154:GLN:O	1:A:155:SER:O	2.36	0.42
1:A:278:MET:HE3	6:A:1124:HOH:O	2.18	0.42
1:B:296:LYS:CD	1:B:606:VAL:HG23	2.49	0.42
1:A:243:ARG:HB2	1:A:247:ASP:CB	2.49	0.42
1:A:57:LYS:HD2	6:A:1085:HOH:O	2.19	0.42
1:A:11:ILE:HG22	1:A:12:GLN:NE2	2.33	0.42
1:A:134:ASN:OD1	1:A:134:ASN:N	2.51	0.42
1:A:89:PHE:CZ	1:A:103:VAL:HG13	2.54	0.42
1:A:60:LEU:CD2	1:A:72:LEU:HD22	2.48	0.42
1:A:40:VAL:HG22	1:A:179:ALA:HA	2.01	0.42
1:B:32:ASP:HB3	1:B:294:VAL:HG11	2.01	0.42
1:B:66:ILE:HG12	1:B:66:ILE:H	1.36	0.42
1:B:172:LYS:O	1:B:172:LYS:HG3	2.20	0.42
1:B:25:SER:O	1:B:26:ALA:HB2	2.19	0.42
1:B:119:LYS:HA	1:B:119:LYS:HD2	1.74	0.42
1:A:136:VAL:HG12	1:A:137:ASN:N	2.35	0.42
1:B:15:CYS:HG	1:B:598:ALA:HB3	1.85	0.42
1:A:224:GLU:O	1:A:229:ARG:HB2	2.19	0.42
1:A:170:ILE:HA	1:A:170:ILE:HD12	1.71	0.42
1:B:32:ASP:HB2	1:B:298:ARG:HH12	1.85	0.42
1:B:140:LEU:C	1:B:141:ILE:HG13	2.39	0.42
1:B:233:LEU:HD22	1:B:237:TRP:NE1	2.34	0.42
1:B:309:THR:O	1:B:312:GLU:N	2.53	0.42
1:A:287:LEU:HA	1:A:287:LEU:HD23	1.80	0.42
1:A:70:ARG:NH1	1:A:110:GLU:HG3	2.35	0.42
1:A:35:PRO:HG2	1:A:176:ILE:CD1	2.50	0.42
1:B:172:LYS:HB3	6:B:1039:HOH:O	2.19	0.42
1:B:13:ARG:C	1:B:15:CYS:H	2.24	0.41
1:A:137:ASN:ND2	6:A:1038:HOH:O	2.53	0.41
1:B:54:ILE:HA	1:B:54:ILE:HD12	1.73	0.41
1:B:585:ARG:CA	6:B:1103:HOH:O	2.68	0.41
1:A:3:ASN:ND2	6:A:1044:HOH:O	2.34	0.41
1:A:10:LYS:C	1:A:12:GLN:H	2.23	0.41

Continued on next page...

Continued from previous page...

Atom-1	Atom-2	Interatomic distance (Å)	Clash overlap (Å)
1:B:296:LYS:O	1:B:299:ILE:HG12	2.20	0.41
1:B:84:ARG:NH2	1:B:86:TYR:CE2	2.88	0.41
1:A:171:GLU:O	1:A:172:LYS:C	2.58	0.41
1:A:226:LEU:HD22	1:A:278:MET:SD	2.60	0.41
1:B:95:LYS:HD3	1:B:96:LYS:N	2.35	0.41
1:A:302:ILE:HG23	1:A:302:ILE:O	2.19	0.41
1:A:312:GLU:O	1:A:314:GLU:N	2.53	0.41
1:B:216:MET:HB2	6:B:1028:HOH:O	2.21	0.41
1:B:32:ASP:C	1:B:298:ARG:HH22	2.24	0.41
1:B:32:ASP:C	1:B:35:PRO:CD	2.89	0.41
1:B:152:ASP:CG	1:B:153:GLY:N	2.74	0.41
1:B:1:MET:O	1:B:2:GLU:C	2.59	0.41
1:B:286:MET:HG3	6:B:1009:HOH:O	2.20	0.41
1:B:585:ARG:O	1:B:586:ARG:C	2.56	0.41
1:B:67:VAL:HG23	1:B:68:THR:N	2.36	0.41
1:B:296:LYS:HB2	1:B:296:LYS:HE3	1.71	0.41
1:B:11:ILE:O	1:B:602:GLU:OE2	2.39	0.41
1:B:594:GLU:HG3	1:B:594:GLU:H	1.73	0.41
1:A:226:LEU:C	1:A:228:GLY:H	2.23	0.41
1:B:121:ILE:H	1:B:121:ILE:HG13	1.69	0.41
1:A:150:ALA:O	1:A:151:VAL:HB	2.21	0.41
1:B:17:ALA:C	1:B:19:GLY:N	2.68	0.41
1:B:20:ASP:C	1:B:22:GLY:N	2.74	0.41
1:A:6:SER:HB2	1:A:10:LYS:HE2	2.02	0.41
1:B:243:ARG:HD2	1:B:252:VAL:HG23	2.03	0.41
1:A:210:LEU:HA	1:A:210:LEU:HD23	1.85	0.41
1:A:26:ALA:HA	1:A:27:LEU:HA	1.74	0.41
1:A:59:PHE:HB3	1:A:100:PHE:HB3	2.03	0.41
1:A:12:GLN:HB2	1:A:17:ALA:HB2	2.03	0.41
1:B:70:ARG:O	6:B:1095:HOH:O	2.22	0.40
1:B:52:GLU:HG3	1:B:254:MET:CE	2.51	0.40
1:A:149:VAL:HG12	1:A:150:ALA:O	2.21	0.40
1:B:285:LYS:CE	1:B:286:MET:HA	2.51	0.40
1:A:228:GLY:O	1:A:232:LYS:HG3	2.21	0.40
1:B:67:VAL:HG23	1:B:68:THR:H	1.86	0.40
1:A:16:THR:O	1:A:595:LEU:HD13	2.21	0.40
1:B:67:VAL:HG22	3:B:1001:ALF:F1	2.11	0.40
1:A:180:ILE:N	1:A:180:ILE:HD12	2.36	0.40
1:A:259:LYS:NZ	1:A:262:ARG:NH1	2.69	0.40
1:A:167:ARG:HD2	6:A:1068:HOH:O	2.20	0.40
1:B:114:GLU:OE1	1:B:122:SER:HB2	2.20	0.40

Continued on next page...

Continued from previous page...

Atom-1	Atom-2	Interatomic distance (Å)	Clash overlap (Å)
1:B:585:ARG:HB3	1:B:586:ARG:H	1.50	0.40
1:A:591:LYS:O	1:A:594:GLU:N	2.55	0.40
1:A:200:ASP:O	1:A:203:GLY:N	2.39	0.40
1:B:7:LEU:HD22	1:B:7:LEU:HA	1.98	0.40
1:B:21:HIS:HB3	6:B:1044:HOH:O	2.20	0.40
1:B:63:GLY:HA3	1:B:67:VAL:HG11	2.04	0.40
1:A:112:ASP:O	1:A:113:ARG:C	2.59	0.40

There are no symmetry-related clashes.

5.3 Torsion angles [i](#)

5.3.1 Protein backbone [i](#)

In the following table, the Percentiles column shows the percent Ramachandran outliers of the chain as a percentile score with respect to all X-ray entries followed by that with respect to entries of similar resolution.

The Analysed column shows the number of residues for which the backbone conformation was analysed, and the total number of residues.

Mol	Chain	Analysed	Favoured	Allowed	Outliers	Percentiles	
1	A	329/360 (91%)	268 (82%)	42 (13%)	19 (6%)	2	1
1	B	335/360 (93%)	263 (78%)	39 (12%)	33 (10%)	1	0
All	All	664/720 (92%)	531 (80%)	81 (12%)	52 (8%)	1	0

All (52) Ramachandran outliers are listed below:

Mol	Chain	Res	Type
1	A	64	SER
1	A	80	ASP
1	A	83	THR
1	A	150	ALA
1	A	151	VAL
1	A	155	SER
1	A	230	SER
1	A	269	THR
1	A	308	LYS
1	A	309	THR
1	A	584	GLU

Continued on next page...

Continued from previous page...

Mol	Chain	Res	Type
1	B	2	GLU
1	B	3	ASN
1	B	20	ASP
1	B	31	TRP
1	B	83	THR
1	B	150	ALA
1	B	155	SER
1	B	303	GLN
1	B	309	THR
1	B	582	ILE
1	B	585	ARG
1	B	586	ARG
1	A	11	ILE
1	A	81	ASP
1	A	113	ARG
1	A	313	LEU
1	A	589	ILE
1	A	599	ALA
1	B	15	CYS
1	B	18	LEU
1	B	35	PRO
1	B	81	ASP
1	B	296	LYS
1	B	306	ILE
1	B	581	ALA
1	A	227	GLU
1	B	13	ARG
1	B	17	ALA
1	B	19	GLY
1	B	26	ALA
1	B	312	GLU
1	B	32	ASP
1	B	34	LEU
1	B	64	SER
1	A	600	GLN
1	B	21	HIS
1	B	275	ALA
1	B	299	ILE
1	B	584	GLU
1	B	8	VAL
1	B	158	ILE

5.3.2 Protein sidechains ⓘ

In the following table, the Percentiles column shows the percent sidechain outliers of the chain as a percentile score with respect to all X-ray entries followed by that with respect to entries of similar resolution.

The Analysed column shows the number of residues for which the sidechain conformation was analysed, and the total number of residues.

Mol	Chain	Analysed	Rotameric	Outliers	Percentiles	
1	A	292/313 (93%)	227 (78%)	65 (22%)	1	1
1	B	297/313 (95%)	240 (81%)	57 (19%)	2	2
All	All	589/626 (94%)	467 (79%)	122 (21%)	1	1

All (122) residues with a non-rotameric sidechain are listed below:

Mol	Chain	Res	Type
1	A	2	GLU
1	A	4	LEU
1	A	5	ILE
1	A	10	LYS
1	A	12	GLN
1	A	13	ARG
1	A	15	CYS
1	A	16	THR
1	A	20	ASP
1	A	23	ASP
1	A	32	ASP
1	A	34	LEU
1	A	37	ILE
1	A	39	VAL
1	A	40	VAL
1	A	51	LEU
1	A	53	SER
1	A	54	ILE
1	A	62	ARG
1	A	72	LEU
1	A	75	GLN
1	A	79	ILE
1	A	88	GLU
1	A	94	ARG
1	A	113	ARG
1	A	117	ARG
1	A	132	SER

Continued on next page...

Continued from previous page...

Mol	Chain	Res	Type
1	A	134	ASN
1	A	137	ASN
1	A	160	LYS
1	A	170	ILE
1	A	172	LYS
1	A	185	GLN
1	A	186	ASP
1	A	187	LEU
1	A	195	ILE
1	A	210	LEU
1	A	218	LYS
1	A	233	LEU
1	A	243	ARG
1	A	250	LYS
1	A	255	ILE
1	A	258	ARG
1	A	259	LYS
1	A	260	ARG
1	A	263	GLU
1	A	269	THR
1	A	270	GLU
1	A	277	LYS
1	A	278	MET
1	A	288	SER
1	A	289	LYS
1	A	291	LEU
1	A	295	ILE
1	A	298	ARG
1	A	302	ILE
1	A	306	ILE
1	A	313	LEU
1	A	585	ARG
1	A	587	SER
1	A	591	LYS
1	A	592	ARG
1	A	595	LEU
1	A	602	GLU
1	A	604	ASP
1	B	2	GLU
1	B	5	ILE
1	B	7	LEU
1	B	13	ARG

Continued on next page...

Continued from previous page...

Mol	Chain	Res	Type
1	B	15	CYS
1	B	21	HIS
1	B	27	LEU
1	B	30	LEU
1	B	34	LEU
1	B	44	SER
1	B	51	LEU
1	B	54	ILE
1	B	64	SER
1	B	66	ILE
1	B	74	LEU
1	B	76	LEU
1	B	79	ILE
1	B	80	ASP
1	B	81	ASP
1	B	84	ARG
1	B	92	LEU
1	B	114	GLU
1	B	124	VAL
1	B	136	VAL
1	B	138	LEU
1	B	149	VAL
1	B	160	LYS
1	B	170	ILE
1	B	178	LEU
1	B	185	GLN
1	B	186	ASP
1	B	187	LEU
1	B	195	ILE
1	B	218	LYS
1	B	232	LYS
1	B	233	LEU
1	B	250	LYS
1	B	258	ARG
1	B	259	LYS
1	B	260	ARG
1	B	268	THR
1	B	286	MET
1	B	291	LEU
1	B	295	ILE
1	B	296	LYS
1	B	298	ARG

Continued on next page...

Continued from previous page...

Mol	Chain	Res	Type
1	B	303	GLN
1	B	307	ASN
1	B	310	VAL
1	B	312	GLU
1	B	314	GLU
1	B	582	ILE
1	B	584	GLU
1	B	586	ARG
1	B	587	SER
1	B	592	ARG
1	B	606	VAL

Some sidechains can be flipped to improve hydrogen bonding and reduce clashes. All (5) such sidechains are listed below:

Mol	Chain	Res	Type
1	A	12	GLN
1	B	91	HIS
1	B	108	GLN
1	B	303	GLN
1	B	600	GLN

5.3.3 RNA [i](#)

There are no RNA molecules in this entry.

5.4 Non-standard residues in protein, DNA, RNA chains [i](#)

There are no non-standard protein/DNA/RNA residues in this entry.

5.5 Carbohydrates [i](#)

There are no carbohydrates in this entry.

5.6 Ligand geometry [i](#)

Of 8 ligands modelled in this entry, 4 are monoatomic - leaving 4 for Mogul analysis.

In the following table, the Counts columns list the number of bonds (or angles) for which Mogul statistics could be retrieved, the number of bonds (or angles) that are observed in the model and

the number of bonds (or angles) that are defined in the chemical component dictionary. The Link column lists molecule types, if any, to which the group is linked. The Z score for a bond length (or angle) is the number of standard deviations the observed value is removed from the expected value. A bond length (or angle) with $|Z| > 2$ is considered an outlier worth inspection. RMSZ is the root-mean-square of all Z scores of the bond lengths (or angles).

Mol	Type	Chain	Res	Link	Bond lengths			Bond angles		
					Counts	RMSZ	# Z > 2	Counts	RMSZ	# Z > 2
2	GDP	A	1000	5,4	23,30,30	1.12	3 (13%)	30,47,47	1.87	8 (26%)
3	ALF	A	1001	-	0,4,4	0.00	-	0,6,6	0.00	-
2	GDP	B	1000	5,4	23,30,30	1.10	2 (8%)	30,47,47	1.83	5 (16%)
3	ALF	B	1001	-	0,4,4	0.00	-	0,6,6	0.00	-

In the following table, the Chirals column lists the number of chiral outliers, the number of chiral centers analysed, the number of these observed in the model and the number defined in the chemical component dictionary. Similar counts are reported in the Torsion and Rings columns. '-' means no outliers of that kind were identified.

Mol	Type	Chain	Res	Link	Chirals	Torsions	Rings
2	GDP	A	1000	5,4	-	0/12/32/32	0/3/3/3
3	ALF	A	1001	-	-	0/0/0/0	0/0/0/0
2	GDP	B	1000	5,4	-	0/12/32/32	0/3/3/3
3	ALF	B	1001	-	-	0/0/0/0	0/0/0/0

All (5) bond length outliers are listed below:

Mol	Chain	Res	Type	Atoms	Z	Observed(Å)	Ideal(Å)
2	A	1000	GDP	O4'-C1'	2.01	1.43	1.41
2	B	1000	GDP	C5-C4	2.81	1.46	1.40
2	A	1000	GDP	C5-C4	3.07	1.47	1.40
2	A	1000	GDP	C6-C5	3.13	1.47	1.41
2	B	1000	GDP	C6-C5	3.16	1.47	1.41

All (13) bond angle outliers are listed below:

Mol	Chain	Res	Type	Atoms	Z	Observed(°)	Ideal(°)
2	B	1000	GDP	C5-C6-N1	-4.85	116.96	123.59
2	A	1000	GDP	C5-C6-N1	-4.77	117.07	123.59
2	B	1000	GDP	PA-O3A-PB	-4.05	119.10	132.67
2	B	1000	GDP	C4-C5-N7	-3.37	106.38	109.48
2	A	1000	GDP	C4-C5-N7	-3.20	106.53	109.48
2	A	1000	GDP	N3-C2-N1	-2.93	122.98	127.44
2	B	1000	GDP	N3-C2-N1	-2.74	123.27	127.44
2	A	1000	GDP	C6-C5-C4	-2.43	117.99	120.90

Continued on next page...

Continued from previous page...

Mol	Chain	Res	Type	Atoms	Z	Observed(°)	Ideal(°)
2	A	1000	GDP	O3A-PA-O5'	-2.35	96.71	102.94
2	A	1000	GDP	O3B-PB-O3A	2.59	116.83	105.09
2	A	1000	GDP	C2'-C1'-N9	3.03	118.91	114.29
2	B	1000	GDP	C6-N1-C2	4.49	122.17	115.94
2	A	1000	GDP	C6-N1-C2	4.67	122.42	115.94

There are no chirality outliers.

There are no torsion outliers.

There are no ring outliers.

4 monomers are involved in 10 short contacts:

Mol	Chain	Res	Type	Clashes	Symm-Clashes
2	A	1000	GDP	2	0
3	A	1001	ALF	2	0
2	B	1000	GDP	3	0
3	B	1001	ALF	3	0

5.7 Other polymers [i](#)

There are no such residues in this entry.

5.8 Polymer linkage issues [i](#)

There are no chain breaks in this entry.

6 Fit of model and data ⓘ

6.1 Protein, DNA and RNA chains ⓘ

In the following table, the column labelled ‘#RSRZ> 2’ contains the number (and percentage) of RSRZ outliers, followed by percent RSRZ outliers for the chain as percentile scores relative to all X-ray entries and entries of similar resolution. The OWAB column contains the minimum, median, 95th percentile and maximum values of the occupancy-weighted average B-factor per residue. The column labelled ‘Q< 0.9’ lists the number of (and percentage) of residues with an average occupancy less than 0.9.

Mol	Chain	Analysed	<RSRZ>	#RSRZ>2	OWAB(Å ²)	Q<0.9
1	A	335/360 (93%)	0.51	36 (10%) 8 8	36, 59, 104, 147	0
1	B	341/360 (94%)	0.68	39 (11%) 7 7	34, 62, 104, 130	0
All	All	676/720 (93%)	0.60	75 (11%) 7 7	34, 60, 105, 147	0

All (75) RSRZ outliers are listed below:

Mol	Chain	Res	Type	RSRZ
1	A	27	LEU	11.0
1	B	603	ILE	9.9
1	B	605	ALA	7.8
1	A	24	SER	7.6
1	B	26	ALA	7.1
1	B	27	LEU	7.1
1	A	117	ARG	6.9
1	A	23	ASP	6.9
1	A	310	VAL	5.9
1	A	313	LEU	5.9
1	B	29	THR	5.9
1	B	31	TRP	5.7
1	B	30	LEU	5.7
1	B	581	ALA	5.6
1	B	604	ASP	5.6
1	A	583	MET	5.4
1	A	22	GLY	5.3
1	A	584	GLU	5.2
1	A	604	ASP	4.9
1	A	316	GLU	4.9
1	B	606	VAL	4.7
1	A	14	ALA	4.6
1	A	25	SER	4.5
1	B	83	THR	4.4

Continued on next page...

Continued from previous page...

Mol	Chain	Res	Type	RSRZ
1	A	311	LEU	4.2
1	A	603	ILE	4.0
1	B	25	SER	3.8
1	B	602	GLU	3.8
1	B	34	LEU	3.7
1	B	22	GLY	3.7
1	B	307	ASN	3.6
1	B	24	SER	3.5
1	B	276	ASN	3.5
1	B	308	LYS	3.4
1	A	305	LEU	3.3
1	A	26	ALA	3.2
1	B	78	LYS	3.2
1	B	299	ILE	3.2
1	A	303	GLN	3.1
1	A	315	THR	3.1
1	A	586	ARG	3.1
1	B	596	TYR	3.0
1	B	309	THR	2.9
1	A	587	SER	2.8
1	A	309	THR	2.8
1	B	32	ASP	2.7
1	A	595	LEU	2.7
1	B	595	LEU	2.7
1	B	582	ILE	2.6
1	B	23	ASP	2.6
1	B	117	ARG	2.6
1	A	304	SER	2.6
1	B	208	GLY	2.5
1	A	596	TYR	2.5
1	A	15	CYS	2.4
1	A	605	ALA	2.4
1	A	308	LYS	2.4
1	A	276	ASN	2.3
1	B	182	PRO	2.3
1	A	19	GLY	2.3
1	B	45	SER	2.3
1	B	180	ILE	2.3
1	B	305	LEU	2.3
1	A	18	LEU	2.2
1	B	17	ALA	2.2
1	A	585	ARG	2.2

Continued on next page...

Continued from previous page...

Mol	Chain	Res	Type	RSRZ
1	A	234	LYS	2.2
1	A	20	ASP	2.2
1	B	15	CYS	2.2
1	A	306	ILE	2.1
1	B	306	ILE	2.1
1	A	64	SER	2.1
1	B	597	ARG	2.0
1	B	222	ALA	2.0
1	B	178	LEU	2.0

6.2 Non-standard residues in protein, DNA, RNA chains [i](#)

There are no non-standard protein/DNA/RNA residues in this entry.

6.3 Carbohydrates [i](#)

There are no carbohydrates in this entry.

6.4 Ligands [i](#)

In the following table, the Atoms column lists the number of modelled atoms in the group and the number defined in the chemical component dictionary. LLDF column lists the quality of electron density of the group with respect to its neighbouring residues in protein, DNA or RNA chains. The B-factors column lists the minimum, median, 95th percentile and maximum values of B factors of atoms in the group. The column labelled 'Q < 0.9' lists the number of atoms with occupancy less than 0.9.

Mol	Type	Chain	Res	Atoms	RSCC	RSR	LLDF	B-factors(Å ²)	Q<0.9
4	MG	A	1002	1/1	0.95	0.25	2.38	39,39,39,39	0
5	NA	A	1003	1/1	0.89	0.25	0.93	45,45,45,45	0
5	NA	B	1003	1/1	0.95	0.22	0.52	42,42,42,42	0
2	GDP	B	1000	28/28	0.98	0.18	-0.25	34,39,46,49	0
2	GDP	A	1000	28/28	0.97	0.17	-0.39	32,38,41,42	0
3	ALF	A	1001	5/5	0.98	0.18	-0.83	32,35,46,53	0
3	ALF	B	1001	5/5	0.97	0.17	-0.94	46,46,49,60	0
4	MG	B	1002	1/1	0.96	0.33	-	50,50,50,50	0

6.5 Other polymers [i](#)

There are no such residues in this entry.