



Full wwPDB X-ray Structure Validation Report ⓘ

Oct 18, 2016 – 01:28 AM EDT

PDB ID : 5T4E
Title : Human DPP4 in complex with ligand 19a
Authors : Scapin, G.
Deposited on : 2016-08-29
Resolution : 1.77 Å(reported)

This is a Full wwPDB X-ray Structure Validation Report for a publicly released PDB entry.

We welcome your comments at validation@mail.wwpdb.org

A user guide is available at

<http://wwpdb.org/validation/2016/XrayValidationReportHelp>

with specific help available everywhere you see the ⓘ symbol.

The following versions of software and data (see [references ⓘ](#)) were used in the production of this report:

MolProbity : 4.02b-467
Mogul : 1.7.1 (RC1), CSD as537be (2016)
Xtriage (Phenix) : 1.9-1692
EDS : rb-20027939
Percentile statistics : 20151230.v01 (using entries in the PDB archive December 30th 2015)
Refmac : 5.8.0135
CCP4 : 6.5.0
Ideal geometry (proteins) : Engh & Huber (2001)
Ideal geometry (DNA, RNA) : Parkinson et al. (1996)
Validation Pipeline (wwPDB-VP) : rb-20027939

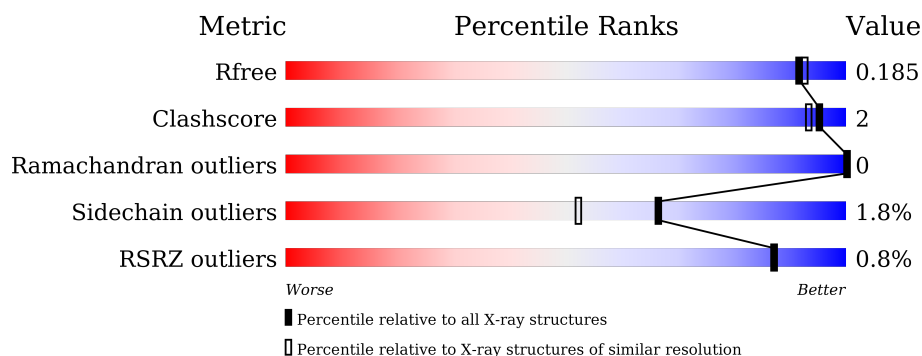
1 Overall quality at a glance

The following experimental techniques were used to determine the structure:

X-RAY DIFFRACTION

The reported resolution of this entry is 1.77 Å.

Percentile scores (ranging between 0-100) for global validation metrics of the entry are shown in the following graphic. The table shows the number of entries on which the scores are based.



Metric	Whole archive (#Entries)	Similar resolution (#Entries, resolution range(Å))
R_{free}	91344	6655 (1.80-1.76)
Clashscore	102246	7658 (1.80-1.76)
Ramachandran outliers	100387	7570 (1.80-1.76)
Sidechain outliers	100360	7569 (1.80-1.76)
RSRZ outliers	91569	6671 (1.80-1.76)

The table below summarises the geometric issues observed across the polymeric chains and their fit to the electron density. The red, orange, yellow and green segments on the lower bar indicate the fraction of residues that contain outliers for ≥ 3 , 2, 1 and 0 types of geometric quality criteria. A grey segment represents the fraction of residues that are not modelled. The numeric value for each fraction is indicated below the corresponding segment, with a dot representing fractions $\leq 5\%$. The upper red bar (where present) indicates the fraction of residues that have poor fit to the electron density. The numeric value is given above the bar.

Mol	Chain	Length	Quality of chain
1	A	728	<div> <div style="width: 100%; height: 10px; background: linear-gradient(to right, red 1%, orange 1%, yellow 1%, green 98%);"></div> <div style="display: flex; justify-content: space-between; width: 98%; margin-top: 2px;"> % 94% 6% </div> </div>
1	B	728	<div> <div style="width: 100%; height: 10px; background: linear-gradient(to right, red 1%, orange 1%, yellow 1%, green 98%);"></div> <div style="display: flex; justify-content: space-between; width: 98%; margin-top: 2px;"> % 96% . </div> </div>

The following table lists non-polymeric compounds, carbohydrate monomers and non-standard residues in protein, DNA, RNA chains that are outliers for geometric or electron-density-fit criteria:

Mol	Type	Chain	Res	Chirality	Geometry	Clashes	Electron density
2	NAG	A	804	-	-	-	X
2	NAG	A	805	-	-	-	X
2	NAG	A	808	-	-	-	X
2	NAG	B	801	-	-	-	X
2	NAG	B	805	-	-	-	X
2	NAG	B	810	-	-	-	X
3	75L	B	811	-	-	-	X

2 Entry composition [i](#)

There are 5 unique types of molecules in this entry. The entry contains 14454 atoms, of which 0 are hydrogens and 0 are deuteriums.

In the tables below, the ZeroOcc column contains the number of atoms modelled with zero occupancy, the AltConf column contains the number of residues with at least one atom in alternate conformation and the Trace column contains the number of residues modelled with at most 2 atoms.

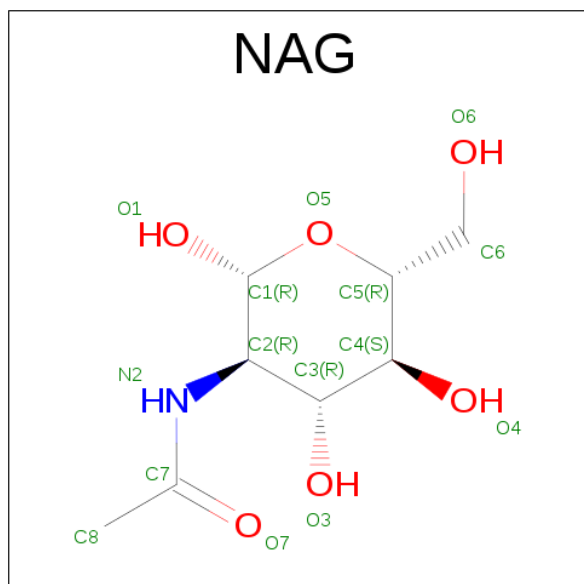
- Molecule 1 is a protein called Dipeptidyl peptidase 4.

Mol	Chain	Residues	Atoms					ZeroOcc	AltConf	Trace
1	A	728	Total	C	N	O	S	0	11	0
			6012	3860	988	1138	26			
1	B	728	Total	C	N	O	S	0	6	0
			5992	3848	985	1132	27			

There are 2 discrepancies between the modelled and reference sequences:

Chain	Residue	Modelled	Actual	Comment	Reference
A	39	THR	-	expression tag	UNP P27487
B	39	THR	-	expression tag	UNP P27487

- Molecule 2 is N-ACETYL-D-GLUCOSAMINE (three-letter code: NAG) (formula: C₈H₁₅NO₆).



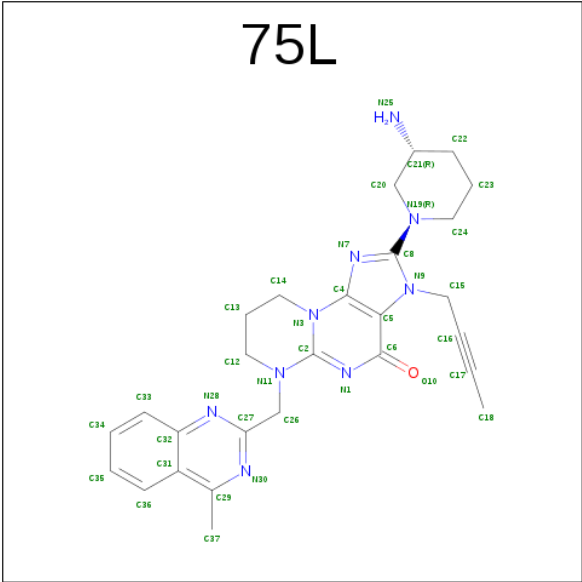
Mol	Chain	Residues	Atoms				ZeroOcc	AltConf
2	A	1	Total	C	N	O	0	0
			14	8	1	5		

Continued on next page...

Continued from previous page...

Mol	Chain	Residues	Atoms				ZeroOcc	AltConf
2	A	1	Total	C	N	O	0	0
			14	8	1	5		
2	A	1	Total	C	N	O	0	0
			14	8	1	5		
2	A	1	Total	C	N	O	0	0
			14	8	1	5		
2	A	1	Total	C	N	O	0	0
			14	8	1	5		
2	A	1	Total	C	N	O	0	0
			14	8	1	5		
2	A	1	Total	C	N	O	0	0
			14	8	1	5		
2	A	1	Total	C	N	O	0	0
			14	8	1	5		
2	B	1	Total	C	N	O	0	0
			14	8	1	5		
2	B	1	Total	C	N	O	0	0
			14	8	1	5		
2	B	1	Total	C	N	O	0	0
			14	8	1	5		
2	B	1	Total	C	N	O	0	0
			14	8	1	5		
2	B	1	Total	C	N	O	0	0
			14	8	1	5		
2	B	1	Total	C	N	O	0	0
			14	8	1	5		
2	B	1	Total	C	N	O	0	0
			14	8	1	5		
2	B	1	Total	C	N	O	0	0
			14	8	1	5		

- Molecule 3 is 2-[(3R)-3-aminopiperidin-1-yl]-3-(but-2-yn-1-yl)-6-[(4-methylquinazolin-2-yl)methyl]-6,7,8,9-tetrahydropyrimido[2,1-b]purin-4(3H)-one (three-letter code: 75L) (formula: C₂₇H₃₁N₉O).



Mol	Chain	Residues	Atoms				ZeroOcc	AltConf
3	A	1	Total	C	N	O	0	0
			37	27	9	1		
3	B	1	Total	C	N	O	0	0
			37	27	9	1		

- Molecule 4 is SODIUM ION (three-letter code: NA) (formula: Na).

Mol	Chain	Residues	Atoms		ZeroOcc	AltConf
4	A	1	Total	Na	0	0
			1	1		

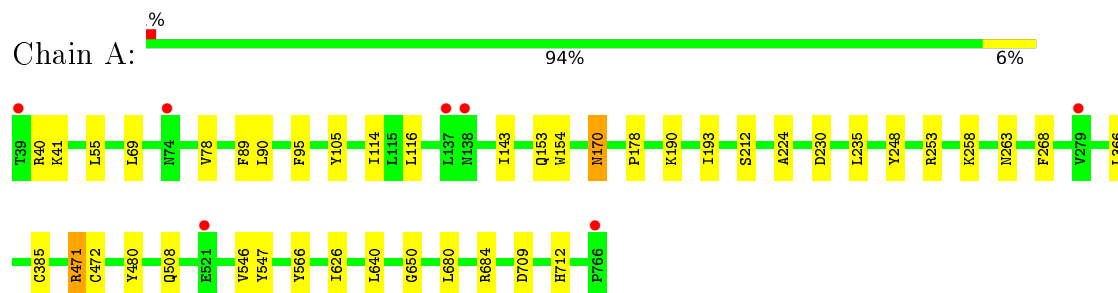
- Molecule 5 is water.

Mol	Chain	Residues	Atoms		ZeroOcc	AltConf
5	A	1094	Total	O	0	0
			1094	1094		
5	B	1015	Total	O	0	0
			1015	1015		

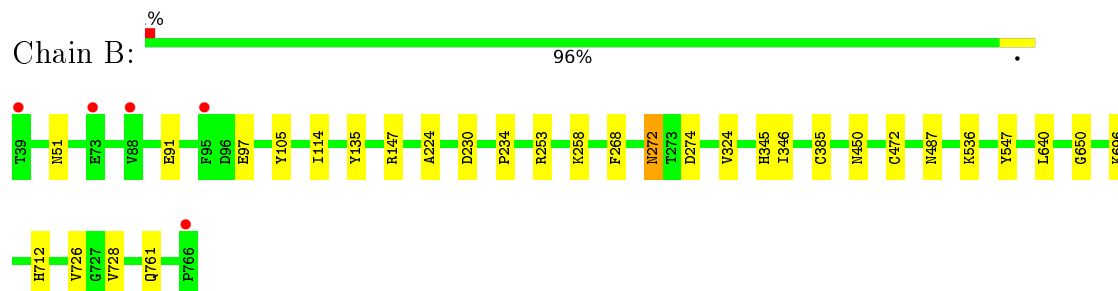
3 Residue-property plots [i](#)

These plots are drawn for all protein, RNA and DNA chains in the entry. The first graphic for a chain summarises the proportions of errors displayed in the second graphic. The second graphic shows the sequence view annotated by issues in geometry and electron density. Residues are color-coded according to the number of geometric quality criteria for which they contain at least one outlier: green = 0, yellow = 1, orange = 2 and red = 3 or more. A red dot above a residue indicates a poor fit to the electron density ($\text{RSRZ} > 2$). Stretches of 2 or more consecutive residues without any outlier are shown as a green connector. Residues present in the sample, but not in the model, are shown in grey.

- Molecule 1: Dipeptidyl peptidase 4



- Molecule 1: Dipeptidyl peptidase 4



4 Data and refinement statistics

Property	Value	Source
Space group	P 21 21 21	Depositor
Cell constants a, b, c, α , β , γ	118.29Å 125.90Å 137.22Å 90.00° 90.00° 90.00°	Depositor
Resolution (Å)	92.77 – 1.77 92.77 – 1.76	Depositor EDS
% Data completeness (in resolution range)	99.3 (92.77-1.77) 99.9 (92.77-1.76)	Depositor EDS
R_{merge}	(Not available)	Depositor
R_{sym}	0.05	Depositor
$\langle I/\sigma(I) \rangle$ ¹	3.16 (at 1.76Å)	Xtriage
Refinement program	BUSTER 2.9.4	Depositor
R, R_{free}	0.154 , 0.182 0.158 , 0.185	Depositor DCC
R_{free} test set	10006 reflections (5.30%)	DCC
Wilson B-factor (Å ²)	21.0	Xtriage
Anisotropy	0.378	Xtriage
Bulk solvent k_{sol} (e/Å ³), B_{sol} (Å ²)	0.33 , 51.2	EDS
L-test for twinning ²	$\langle L \rangle = 0.48$, $\langle L^2 \rangle = 0.31$	Xtriage
Estimated twinning fraction	No twinning to report.	Xtriage
F_o, F_c correlation	0.96	EDS
Total number of atoms	14454	wwPDB-VP
Average B, all atoms (Å ²)	27.0	wwPDB-VP

Xtriage's analysis on translational NCS is as follows: *The largest off-origin peak in the Patterson function is 2.89% of the height of the origin peak. No significant pseudotranslation is detected.*

¹Intensities estimated from amplitudes.

²Theoretical values of $\langle |L| \rangle$, $\langle L^2 \rangle$ for acentric reflections are 0.5, 0.333 respectively for untwinned datasets, and 0.375, 0.2 for perfectly twinned datasets.

5 Model quality

5.1 Standard geometry

Bond lengths and bond angles in the following residue types are not validated in this section: NA, NAG, 75L

The Z score for a bond length (or angle) is the number of standard deviations the observed value is removed from the expected value. A bond length (or angle) with $|Z| > 5$ is considered an outlier worth inspection. RMSZ is the root-mean-square of all Z scores of the bond lengths (or angles).

Mol	Chain	Bond lengths		Bond angles	
		RMSZ	# Z >5	RMSZ	# Z >5
1	A	0.52	0/6224	0.63	0/8464
1	B	0.50	0/6184	0.63	0/8410
All	All	0.51	0/12408	0.63	0/16874

There are no bond length outliers.

There are no bond angle outliers.

There are no chirality outliers.

There are no planarity outliers.

5.2 Too-close contacts

In the following table, the Non-H and H(model) columns list the number of non-hydrogen atoms and hydrogen atoms in the chain respectively. The H(added) column lists the number of hydrogen atoms added and optimized by MolProbity. The Clashes column lists the number of clashes within the asymmetric unit, whereas Symm-Clashes lists symmetry related clashes.

Mol	Chain	Non-H	H(model)	H(added)	Clashes	Symm-Clashes
1	A	6012	0	5735	22	0
1	B	5992	0	5725	17	0
2	A	126	0	114	2	0
2	B	140	0	126	1	0
3	A	37	0	0	0	0
3	B	37	0	0	0	0
4	A	1	0	0	0	0
5	A	1094	0	0	1	0
5	B	1015	0	0	2	0
All	All	14454	0	11700	39	0

The all-atom clashscore is defined as the number of clashes found per 1000 atoms (including

hydrogen atoms). The all-atom clashscore for this structure is 2.

All (39) close contacts within the same asymmetric unit are listed below, sorted by their clash magnitude.

Atom-1	Atom-2	Interatomic distance (Å)	Clash overlap (Å)
1:B:258:LYS:HZ1	1:B:712:HIS:HD2	1.07	0.92
1:A:253:ARG:HH21	1:B:253:ARG:HH21	1.28	0.82
1:A:78:VAL:HG23	1:A:89:PHE:HB2	1.70	0.72
1:B:258:LYS:HZ1	1:B:712:HIS:CD2	2.00	0.66
1:A:105:TYR:HB2	1:A:114:ILE:HD11	1.77	0.65
1:B:696:LYS:HG3	1:B:728:VAL:HG22	1.79	0.64
1:B:114:ILE:HG23	1:B:135:TYR:HB3	1.80	0.63
2:A:808:NAG:H61	2:A:809:NAG:H61	1.80	0.62
1:A:258:LYS:NZ	1:A:712:HIS:HD2	1.99	0.61
1:A:471[A]:ARG:HG3	1:A:480:TYR:CE2	2.36	0.60
1:A:153:GLN:HE22	1:A:170:ASN:ND2	2.00	0.59
1:B:640:LEU:HD11	1:B:650:GLY:HA3	1.87	0.56
1:B:726:VAL:HG23	1:B:728:VAL:HG23	1.88	0.55
1:A:69:LEU:HD23	1:A:78:VAL:HG22	1.87	0.55
1:B:272:ASN:C	1:B:272:ASN:HD22	2.09	0.55
1:A:258:LYS:HZ3	1:A:712:HIS:HD2	1.56	0.52
1:A:143:ILE:HD13	1:A:178:PRO:HB2	1.91	0.52
1:A:69:LEU:CD2	1:A:78:VAL:HG22	2.41	0.51
1:B:147:ARG:HE	2:B:803:NAG:H83	1.75	0.50
1:B:105:TYR:HB2	1:B:114:ILE:HD11	1.95	0.49
1:A:224:ALA:HB1	1:A:268:PHE:CZ	2.48	0.49
1:B:345:HIS:HD2	5:B:1055:HOH:O	1.98	0.47
1:A:154:TRP:CE2	1:A:212[A]:SER:HB3	2.50	0.46
1:A:640:LEU:HD11	1:A:650:GLY:HA3	1.98	0.45
1:A:258:LYS:HZ3	1:A:712:HIS:CD2	2.35	0.45
1:A:90:LEU:HD21	1:A:95:PHE:HE2	1.81	0.45
1:A:680:LEU:HD11	1:A:684:ARG:CZ	2.48	0.43
1:B:324:VAL:HG22	1:B:346:ILE:HD13	2.00	0.43
1:A:190:LYS:HG2	1:A:193[A]:ILE:HD12	1.99	0.43
1:B:761:GLN:NE2	5:B:908:HOH:O	2.52	0.42
1:A:709:ASP:O	1:A:712:HIS:HE1	2.03	0.42
2:A:802:NAG:H4	2:A:803:NAG:H2	1.77	0.42
1:B:272:ASN:HD21	1:B:274:ASP:HB2	1.85	0.42
1:A:248:TYR:CZ	1:B:234:PRO:HB2	2.56	0.41
1:A:471[A]:ARG:NH2	5:A:903:HOH:O	2.49	0.41
1:B:258:LYS:NZ	1:B:712:HIS:HD2	1.95	0.41
1:A:40:ARG:HG3	1:A:508:GLN:HG3	2.01	0.41
1:B:224:ALA:HB1	1:B:268:PHE:CZ	2.56	0.41

Continued on next page...

Continued from previous page...

Atom-1	Atom-2	Interatomic distance (Å)	Clash overlap (Å)
1:A:546[B]:VAL:HG21	1:A:626:ILE:HD11	2.02	0.40

There are no symmetry-related clashes.

5.3 Torsion angles [i](#)

5.3.1 Protein backbone [i](#)

In the following table, the Percentiles column shows the percent Ramachandran outliers of the chain as a percentile score with respect to all X-ray entries followed by that with respect to entries of similar resolution.

The Analysed column shows the number of residues for which the backbone conformation was analysed, and the total number of residues.

Mol	Chain	Analysed	Favoured	Allowed	Outliers	Percentiles	
1	A	737/728 (101%)	712 (97%)	25 (3%)	0	100	100
1	B	732/728 (100%)	711 (97%)	21 (3%)	0	100	100
All	All	1469/1456 (101%)	1423 (97%)	46 (3%)	0	100	100

There are no Ramachandran outliers to report.

5.3.2 Protein sidechains [i](#)

In the following table, the Percentiles column shows the percent sidechain outliers of the chain as a percentile score with respect to all X-ray entries followed by that with respect to entries of similar resolution.

The Analysed column shows the number of residues for which the sidechain conformation was analysed, and the total number of residues.

Mol	Chain	Analysed	Rotameric	Outliers	Percentiles	
1	A	664/653 (102%)	650 (98%)	14 (2%)	61	44
1	B	659/653 (101%)	648 (98%)	11 (2%)	68	54
All	All	1323/1306 (101%)	1298 (98%)	25 (2%)	66	49

All (25) residues with a non-rotameric sidechain are listed below:

Mol	Chain	Res	Type
1	A	41	LYS
1	A	55	LEU
1	A	116	LEU
1	A	170	ASN
1	A	230	ASP
1	A	235	LEU
1	A	263	ASN
1	A	366	LEU
1	A	385	CYS
1	A	471[A]	ARG
1	A	471[B]	ARG
1	A	472	CYS
1	A	547	TYR
1	A	566	TYR
1	B	51	ASN
1	B	91	GLU
1	B	97	GLU
1	B	230	ASP
1	B	272	ASN
1	B	385	CYS
1	B	450	ASN
1	B	472	CYS
1	B	487	ASN
1	B	536	LYS
1	B	547	TYR

Some sidechains can be flipped to improve hydrogen bonding and reduce clashes. All (16) such sidechains are listed below:

Mol	Chain	Res	Type
1	A	138	ASN
1	A	169	ASN
1	A	170	ASN
1	A	263	ASN
1	A	435	GLN
1	A	572	ASN
1	A	694	ASN
1	A	712	HIS
1	B	169	ASN
1	B	272	ASN
1	B	345	HIS
1	B	450	ASN
1	B	487	ASN
1	B	572	ASN

Continued on next page...

Continued from previous page...

Mol	Chain	Res	Type
1	B	694	ASN
1	B	712	HIS

5.3.3 RNA ⓘ

There are no RNA molecules in this entry.

5.4 Non-standard residues in protein, DNA, RNA chains ⓘ

There are no non-standard protein/DNA/RNA residues in this entry.

5.5 Carbohydrates ⓘ

There are no carbohydrates in this entry.

5.6 Ligand geometry ⓘ

Of 22 ligands modelled in this entry, 1 is monoatomic - leaving 21 for Mogul analysis.

In the following table, the Counts columns list the number of bonds (or angles) for which Mogul statistics could be retrieved, the number of bonds (or angles) that are observed in the model and the number of bonds (or angles) that are defined in the chemical component dictionary. The Link column lists molecule types, if any, to which the group is linked. The Z score for a bond length (or angle) is the number of standard deviations the observed value is removed from the expected value. A bond length (or angle) with $|Z| > 2$ is considered an outlier worth inspection. RMSZ is the root-mean-square of all Z scores of the bond lengths (or angles).

Mol	Type	Chain	Res	Link	Bond lengths			Bond angles		
					Counts	RMSZ	# $ Z > 2$	Counts	RMSZ	# $ Z > 2$
2	NAG	A	801	1	14,14,15	1.06	1 (7%)	15,19,21	1.44	2 (13%)
2	NAG	A	802	1,2	14,14,15	1.27	2 (14%)	15,19,21	1.56	2 (13%)
2	NAG	A	803	2	14,14,15	1.41	1 (7%)	15,19,21	2.52	7 (46%)
2	NAG	A	804	1,2	14,14,15	1.74	2 (14%)	15,19,21	1.16	2 (13%)
2	NAG	A	805	2	14,14,15	1.23	2 (14%)	15,19,21	1.62	3 (20%)
2	NAG	A	806	1	14,14,15	0.94	1 (7%)	15,19,21	1.48	1 (6%)
2	NAG	A	807	1	14,14,15	1.51	2 (14%)	15,19,21	0.99	1 (6%)
2	NAG	A	808	1,2	14,14,15	1.52	1 (7%)	15,19,21	1.15	1 (6%)
2	NAG	A	809	2	14,14,15	1.28	1 (7%)	15,19,21	1.38	4 (26%)

Mol	Type	Chain	Res	Link	Bond lengths			Bond angles		
					Counts	RMSZ	# Z > 2	Counts	RMSZ	# Z > 2
3	75L	A	810	-	31,42,42	1.55	3 (9%)	34,61,61	1.75	5 (14%)
2	NAG	B	801	1,2	14,14,15	0.86	1 (7%)	15,19,21	1.19	2 (13%)
2	NAG	B	802	2	14,14,15	1.86	3 (21%)	15,19,21	2.13	3 (20%)
2	NAG	B	803	1	14,14,15	1.36	2 (14%)	15,19,21	0.93	1 (6%)
2	NAG	B	804	1,2	14,14,15	1.60	2 (14%)	15,19,21	1.15	0
2	NAG	B	805	2	14,14,15	1.23	1 (7%)	15,19,21	1.72	6 (40%)
2	NAG	B	806	1,2	14,14,15	1.32	2 (14%)	15,19,21	1.31	3 (20%)
2	NAG	B	807	2	14,14,15	1.42	2 (14%)	15,19,21	0.88	0
2	NAG	B	808	1,2	14,14,15	1.13	1 (7%)	15,19,21	1.14	1 (6%)
2	NAG	B	809	2	14,14,15	1.65	4 (28%)	15,19,21	1.76	3 (20%)
2	NAG	B	810	1	14,14,15	1.39	3 (21%)	15,19,21	0.90	1 (6%)
3	75L	B	811	-	31,42,42	1.90	8 (25%)	34,61,61	2.25	12 (35%)

In the following table, the Chirals column lists the number of chiral outliers, the number of chiral centers analysed, the number of these observed in the model and the number defined in the chemical component dictionary. Similar counts are reported in the Torsion and Rings columns. '-' means no outliers of that kind were identified.

Mol	Type	Chain	Res	Link	Chirals	Torsions	Rings
2	NAG	A	801	1	-	0/6/23/26	0/1/1/1
2	NAG	A	802	1,2	-	0/6/23/26	0/1/1/1
2	NAG	A	803	2	-	0/6/23/26	0/1/1/1
2	NAG	A	804	1,2	-	0/6/23/26	0/1/1/1
2	NAG	A	805	2	-	0/6/23/26	0/1/1/1
2	NAG	A	806	1	-	0/6/23/26	0/1/1/1
2	NAG	A	807	1	-	0/6/23/26	0/1/1/1
2	NAG	A	808	1,2	-	0/6/23/26	0/1/1/1
2	NAG	A	809	2	-	0/6/23/26	0/1/1/1
3	75L	A	810	-	-	0/6/32/32	0/5/6/6
2	NAG	B	801	1,2	-	0/6/23/26	0/1/1/1
2	NAG	B	802	2	-	0/6/23/26	0/1/1/1
2	NAG	B	803	1	-	0/6/23/26	0/1/1/1
2	NAG	B	804	1,2	-	0/6/23/26	0/1/1/1
2	NAG	B	805	2	-	0/6/23/26	0/1/1/1
2	NAG	B	806	1,2	-	0/6/23/26	0/1/1/1
2	NAG	B	807	2	-	0/6/23/26	0/1/1/1
2	NAG	B	808	1,2	-	0/6/23/26	0/1/1/1
2	NAG	B	809	2	-	0/6/23/26	0/1/1/1
2	NAG	B	810	1	-	0/6/23/26	0/1/1/1
3	75L	B	811	-	-	0/6/32/32	0/5/6/6

All (45) bond length outliers are listed below:

Mol	Chain	Res	Type	Atoms	Z	Observed(Å)	Ideal(Å)
3	B	811	75L	C20-C21	2.01	1.55	1.52
2	B	807	NAG	C3-C2	2.01	1.57	1.52
2	A	806	NAG	C3-C2	2.02	1.57	1.52
2	A	801	NAG	C1-C2	2.02	1.55	1.52
2	A	805	NAG	C3-C2	2.04	1.57	1.52
2	B	801	NAG	C1-C2	2.05	1.55	1.52
2	B	806	NAG	C4-C5	2.07	1.57	1.53
2	B	803	NAG	C3-C2	2.07	1.57	1.52
3	B	811	75L	C20-N19	2.09	1.51	1.46
2	A	802	NAG	C4-C5	2.12	1.57	1.53
3	A	810	75L	C34-C33	2.12	1.41	1.36
2	B	804	NAG	C4-C5	2.13	1.57	1.53
2	B	810	NAG	C4-C5	2.14	1.57	1.53
2	A	807	NAG	C3-C2	2.15	1.57	1.52
2	B	810	NAG	C4-C3	2.15	1.58	1.52
3	A	810	75L	C23-C24	2.20	1.59	1.51
2	B	809	NAG	C3-C2	2.23	1.57	1.52
2	B	808	NAG	C1-C2	2.30	1.55	1.52
3	B	811	75L	C34-C33	2.31	1.41	1.36
2	B	810	NAG	C3-C2	2.32	1.57	1.52
2	A	804	NAG	C4-C5	2.49	1.58	1.53
3	B	811	75L	C6-C5	2.51	1.46	1.41
2	A	805	NAG	C1-C2	2.52	1.56	1.52
2	B	809	NAG	C2-N2	2.54	1.50	1.46
2	B	809	NAG	C4-C3	2.56	1.59	1.52
2	A	809	NAG	C1-C2	2.59	1.56	1.52
2	B	809	NAG	C1-C2	2.60	1.56	1.52
2	B	802	NAG	C2-N2	2.67	1.51	1.46
2	B	802	NAG	C3-C2	2.68	1.58	1.52
2	B	803	NAG	C1-C2	2.72	1.56	1.52
3	B	811	75L	C24-N19	2.80	1.51	1.46
3	B	811	75L	C6-N1	2.84	1.38	1.33
2	A	802	NAG	C1-C2	3.09	1.56	1.52
2	B	806	NAG	C1-C2	3.16	1.57	1.52
2	B	805	NAG	C1-C2	3.17	1.57	1.52
2	A	803	NAG	C1-C2	3.73	1.57	1.52
2	B	807	NAG	C1-C2	3.74	1.57	1.52
2	A	808	NAG	C1-C2	4.15	1.58	1.52
2	A	807	NAG	C1-C2	4.17	1.58	1.52
3	A	810	75L	C4-N7	4.22	1.37	1.33
3	B	811	75L	C26-N11	4.34	1.52	1.46
2	B	804	NAG	C1-C2	4.47	1.58	1.52

Continued on next page...

Continued from previous page...

Mol	Chain	Res	Type	Atoms	Z	Observed(Å)	Ideal(Å)
2	B	802	NAG	C1-C2	4.92	1.59	1.52
2	A	804	NAG	C1-C2	5.27	1.59	1.52
3	B	811	75L	C27-N30	5.37	1.41	1.33

All (60) bond angle outliers are listed below:

Mol	Chain	Res	Type	Atoms	Z	Observed(°)	Ideal(°)
3	B	811	75L	C5-C6-N1	-6.91	114.48	123.52
3	A	810	75L	C5-C6-N1	-6.45	115.08	123.52
2	A	806	NAG	O4-C4-C3	-4.91	99.29	110.36
3	B	811	75L	C24-N19-C8	-4.55	114.40	121.76
2	A	802	NAG	O4-C4-C3	-4.25	100.78	110.36
3	B	811	75L	C23-C22-C21	-3.35	107.34	111.97
3	A	810	75L	C20-N19-C8	-3.32	116.37	121.76
3	A	810	75L	C26-C27-N28	-3.08	111.87	116.95
3	B	811	75L	C26-C27-N28	-2.74	112.43	116.95
3	A	810	75L	C24-N19-C8	-2.71	117.37	121.76
3	B	811	75L	C20-N19-C8	-2.64	117.48	121.76
3	B	811	75L	N28-C27-N30	-2.53	122.74	126.13
2	B	806	NAG	O4-C4-C3	-2.53	104.65	110.36
2	B	801	NAG	O4-C4-C3	-2.53	104.66	110.36
2	A	801	NAG	O4-C4-C3	-2.52	104.68	110.36
2	A	804	NAG	O4-C4-C3	-2.36	105.03	110.36
2	A	808	NAG	C1-O5-C5	-2.35	108.69	112.14
2	B	808	NAG	C2-N2-C7	-2.30	120.11	123.11
2	B	806	NAG	C8-C7-N2	-2.29	111.70	116.10
2	A	803	NAG	C8-C7-N2	-2.28	111.72	116.10
3	B	811	75L	C37-C29-C31	-2.28	117.93	122.18
2	B	805	NAG	C8-C7-N2	-2.16	111.96	116.10
2	A	805	NAG	C8-C7-N2	-2.14	112.00	116.10
2	B	805	NAG	O4-C4-C5	-2.09	103.71	109.23
2	B	802	NAG	O7-C7-N2	2.01	125.93	121.84
2	B	805	NAG	C4-C3-C2	2.06	114.53	111.34
2	A	807	NAG	O5-C5-C6	2.08	111.79	107.34
3	B	811	75L	C13-C14-N3	2.08	111.93	109.33
2	A	801	NAG	C4-C3-C2	2.09	114.58	111.34
2	A	809	NAG	O5-C5-C6	2.09	111.82	107.34
2	A	803	NAG	O7-C7-N2	2.10	126.12	121.84
2	B	809	NAG	C3-C4-C5	2.10	113.97	110.23
2	A	809	NAG	O5-C5-C4	2.17	113.72	110.13
2	B	810	NAG	C1-O5-C5	2.23	115.42	112.14
2	B	803	NAG	C1-O5-C5	2.27	115.48	112.14

Continued on next page...

Continued from previous page...

Mol	Chain	Res	Type	Atoms	Z	Observed(°)	Ideal(°)
3	B	811	75L	C13-C12-N11	2.29	115.34	111.03
2	A	803	NAG	C4-C3-C2	2.29	114.89	111.34
2	B	805	NAG	C1-O5-C5	2.30	115.52	112.14
2	A	804	NAG	O3-C3-C4	2.35	115.65	110.36
2	B	806	NAG	O7-C7-C8	2.41	126.51	122.07
3	B	811	75L	C36-C31-C29	2.51	125.51	123.15
2	B	809	NAG	O5-C5-C6	2.57	112.84	107.34
2	A	803	NAG	C3-C4-C5	2.61	114.88	110.23
2	B	805	NAG	O5-C5-C4	2.63	114.49	110.13
2	A	809	NAG	C1-O5-C5	2.71	116.12	112.14
2	A	809	NAG	C2-N2-C7	2.73	126.65	123.11
2	B	801	NAG	C4-C3-C2	2.77	115.63	111.34
2	A	802	NAG	C4-C3-C2	2.79	115.67	111.34
2	A	805	NAG	C2-N2-C7	2.90	126.87	123.11
3	A	810	75L	C26-C27-N30	3.05	121.97	116.95
2	B	805	NAG	C2-N2-C7	3.06	127.09	123.11
2	A	803	NAG	O5-C5-C4	3.07	115.21	110.13
2	A	805	NAG	C1-O5-C5	3.57	117.40	112.14
2	B	809	NAG	C2-N2-C7	3.80	128.05	123.11
3	B	811	75L	C27-N28-C32	3.82	119.97	115.86
3	B	811	75L	C26-C27-N30	4.78	124.82	116.95
2	B	802	NAG	C4-C3-C2	4.84	118.85	111.34
2	A	803	NAG	C2-N2-C7	5.34	130.05	123.11
2	A	803	NAG	C1-O5-C5	5.45	120.15	112.14
2	B	802	NAG	C2-N2-C7	5.81	130.66	123.11

There are no chirality outliers.

There are no torsion outliers.

There are no ring outliers.

5 monomers are involved in 3 short contacts:

Mol	Chain	Res	Type	Clashes	Symm-Clashes
2	A	802	NAG	1	0
2	A	803	NAG	1	0
2	A	808	NAG	1	0
2	A	809	NAG	1	0
2	B	803	NAG	1	0

5.7 Other polymers ⓘ

There are no such residues in this entry.

5.8 Polymer linkage issues

There are no chain breaks in this entry.

6 Fit of model and data [i](#)

6.1 Protein, DNA and RNA chains [i](#)

In the following table, the column labelled ‘#RSRZ> 2’ contains the number (and percentage) of RSRZ outliers, followed by percent RSRZ outliers for the chain as percentile scores relative to all X-ray entries and entries of similar resolution. The OWAB column contains the minimum, median, 95th percentile and maximum values of the occupancy-weighted average B-factor per residue. The column labelled ‘Q< 0.9’ lists the number of (and percentage) of residues with an average occupancy less than 0.9.

Mol	Chain	Analysed	<RSRZ>	#RSRZ>2	OWAB(Å ²)	Q<0.9
1	A	728/728 (100%)	-0.16	7 (0%) 84 84	14, 22, 47, 68	0
1	B	728/728 (100%)	-0.18	5 (0%) 89 89	14, 23, 47, 74	0
All	All	1456/1456 (100%)	-0.17	12 (0%) 87 87	14, 22, 47, 74	0

All (12) RSRZ outliers are listed below:

Mol	Chain	Res	Type	RSRZ
1	A	39	THR	7.1
1	B	39	THR	4.9
1	B	766	PRO	4.4
1	A	138	ASN	3.0
1	A	137	LEU	2.9
1	B	95	PHE	2.7
1	A	279	VAL	2.3
1	A	766	PRO	2.3
1	B	73	GLU	2.2
1	A	74	ASN	2.1
1	A	521	GLU	2.1
1	B	88	VAL	2.0

6.2 Non-standard residues in protein, DNA, RNA chains [i](#)

There are no non-standard protein/DNA/RNA residues in this entry.

6.3 Carbohydrates [i](#)

There are no carbohydrates in this entry.

6.4 Ligands ⓘ

In the following table, the Atoms column lists the number of modelled atoms in the group and the number defined in the chemical component dictionary. LLDF column lists the quality of electron density of the group with respect to its neighbouring residues in protein, DNA or RNA chains. The B-factors column lists the minimum, median, 95th percentile and maximum values of B factors of atoms in the group. The column labelled 'Q< 0.9' lists the number of atoms with occupancy less than 0.9.

Mol	Type	Chain	Res	Atoms	RSCC	RSR	LLDF	B-factors(Å ²)	Q<0.9
2	NAG	A	808	14/15	0.88	0.18	8.44	38,42,45,46	0
2	NAG	A	804	14/15	0.89	0.15	6.82	34,38,41,42	0
2	NAG	B	810	14/15	0.83	0.19	4.68	36,40,43,43	0
3	75L	B	811	37/37	0.95	0.11	3.42	17,22,45,46	0
2	NAG	A	805	14/15	0.75	0.15	2.61	53,57,60,60	0
2	NAG	B	801	14/15	0.83	0.11	2.13	50,54,57,57	0
2	NAG	B	805	14/15	0.85	0.13	2.05	48,52,55,55	0
2	NAG	B	808	14/15	0.90	0.10	1.90	28,31,35,36	0
2	NAG	B	804	14/15	0.93	0.09	1.86	33,36,39,41	0
3	75L	A	810	37/37	0.95	0.10	1.62	15,21,38,40	0
2	NAG	A	801	14/15	0.89	0.12	1.23	45,49,53,53	0
2	NAG	A	806	14/15	0.92	0.09	0.72	30,34,37,37	0
4	NA	A	811	1/1	0.99	0.09	0.08	21,21,21,21	0
2	NAG	B	806	14/15	0.94	0.09	-0.06	24,28,32,33	0
2	NAG	A	802	14/15	0.82	0.20	-	55,59,62,62	0
2	NAG	B	802	14/15	0.37	0.22	-	76,80,82,82	0
2	NAG	A	807	14/15	0.82	0.12	-	40,44,47,47	0
2	NAG	B	807	14/15	0.88	0.12	-	46,50,52,53	0
2	NAG	B	809	14/15	0.71	0.23	-	53,57,59,59	0
2	NAG	A	809	14/15	0.59	0.32	-	71,75,78,78	0
2	NAG	A	803	14/15	0.56	0.46	-	80,84,86,87	0
2	NAG	B	803	14/15	0.72	0.20	-	65,69,72,72	0

6.5 Other polymers ⓘ

There are no such residues in this entry.