



wwPDB X-ray Structure Validation Summary Report ⓘ

Jan 31, 2016 – 10:21 PM GMT

PDB ID : 1T8E
Title : T7 DNA Polymerase Ternary Complex with dCTP at the Insertion Site.
Authors : Briebe, L.G.; Eichman, B.F.; Kokoska, R.J.; Doubie, S.; Kunkel, T.A.; Ellenberger, T.
Deposited on : 2004-05-12
Resolution : 2.54 Å(reported)

This is a wwPDB X-ray Structure Validation Summary Report for a publicly released PDB entry.
We welcome your comments at validation@mail.wwpdb.org
A user guide is available at
<http://wwpdb.org/validation/2016/XrayValidationReportHelp>
with specific help available everywhere you see the ⓘ symbol.

The following versions of software and data (see [references ⓘ](#)) were used in the production of this report:

MolProbity : 4.02b-467
Mogul : 1.7 (RC4), CSD as536be (2015)
Xtriage (Phenix) : 1.9-1692
EDS : rb-20026688
Percentile statistics : 20151230.v01 (using entries in the PDB archive December 30th 2015)
Refmac : 5.8.0135
CCP4 : 6.5.0
Ideal geometry (proteins) : Engh & Huber (2001)
Ideal geometry (DNA, RNA) : Parkinson et al. (1996)
Validation Pipeline (wwPDB-VP) : trunk26865

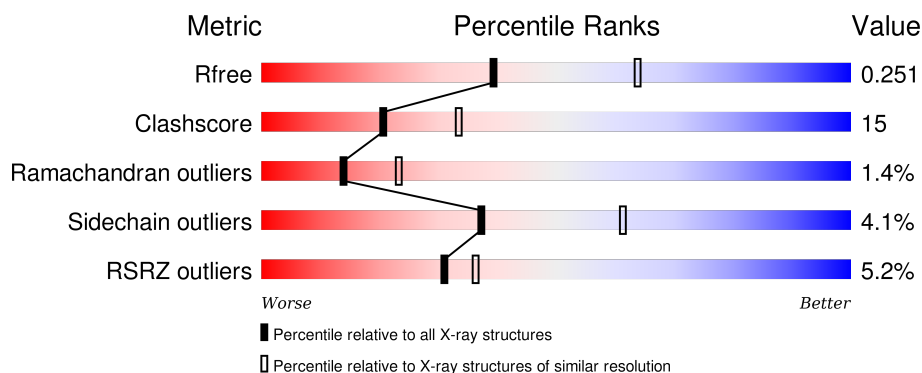
1 Overall quality at a glance

The following experimental techniques were used to determine the structure:

X-RAY DIFFRACTION

The reported resolution of this entry is 2.54 Å.

Percentile scores (ranging between 0-100) for global validation metrics of the entry are shown in the following graphic. The table shows the number of entries on which the scores are based.



Metric	Whole archive (#Entries)	Similar resolution (#Entries, resolution range(Å))
R_{free}	91344	4549 (2.58-2.50)
Clashscore	102246	5292 (2.58-2.50)
Ramachandran outliers	100387	5194 (2.58-2.50)
Sidechain outliers	100360	5196 (2.58-2.50)
RSRZ outliers	91569	4561 (2.58-2.50)

The table below summarises the geometric issues observed across the polymeric chains and their fit to the electron density. The red, orange, yellow and green segments on the lower bar indicate the fraction of residues that contain outliers for ≥ 3 , 2, 1 and 0 types of geometric quality criteria. A grey segment represents the fraction of residues that are not modelled. The numeric value for each fraction is indicated below the corresponding segment, with a dot representing fractions $\leq 5\%$. The upper red bar (where present) indicates the fraction of residues that have poor fit to the electron density. The numeric value is given above the bar.

Mol	Chain	Length	Quality of chain
1	C	22	<div> <div>23%</div> <div> <div>32%</div> <div>59%</div> <div>9%</div> </div> </div>
2	D	26	<div> <div>23%</div> <div> <div>54%</div> <div>35%</div> <div>8%</div> </div> </div>
3	A	698	<div> <div>4%</div> <div> <div>73%</div> <div>25%</div> </div> </div>
4	B	108	<div> <div>2%</div> <div> <div>56%</div> <div>37%</div> <div>6%</div> </div> </div>

The following table lists non-polymeric compounds, carbohydrate monomers and non-standard

residues in protein, DNA, RNA chains that are outliers for geometric or electron-density-fit criteria:

Mol	Type	Chain	Res	Chirality	Geometry	Clashes	Electron density
5	MG	A	4003	-	-	-	X
9	PG4	A	4009	-	-	-	X

2 Entry composition

There are 10 unique types of molecules in this entry. The entry contains 7741 atoms, of which 0 are hydrogens and 0 are deuteriums.

In the tables below, the ZeroOcc column contains the number of atoms modelled with zero occupancy, the AltConf column contains the number of residues with at least one atom in alternate conformation and the Trace column contains the number of residues modelled with at most 2 atoms.

- Molecule 1 is a DNA chain called 5'-D(P*CP*GP*AP*AP*AP*AP*CP*GP*AP*CP*GP*GP*CP*CP*AP*GP*TP*GP*CP*CP*AP*(2DT))-3'.

Mol	Chain	Residues	Atoms					ZeroOcc	AltConf	Trace
1	C	22	Total	C	N	O	P	0	0	0
			451	213	90	126	22			

- Molecule 2 is a DNA chain called 25-MER.

Mol	Chain	Residues	Atoms					ZeroOcc	AltConf	Trace
2	D	25	Total	C	N	O	P	0	0	0
			514	244	89	156	25			

- Molecule 3 is a protein called DNA polymerase.

Mol	Chain	Residues	Atoms					ZeroOcc	AltConf	Trace
3	A	698	Total	C	N	O	S	0	0	0
			5537	3522	963	1028	24			

There are 6 discrepancies between the modelled and reference sequences:

Chain	Residue	Modelled	Actual	Comment	Reference
A	?	-	LYS	DELETION	UNP P00581
A	?	-	ARG	DELETION	UNP P00581
A	?	-	PHE	DELETION	UNP P00581
A	?	-	GLY	DELETION	UNP P00581
A	?	-	SER	DELETION	UNP P00581
A	?	-	HIS	DELETION	UNP P00581

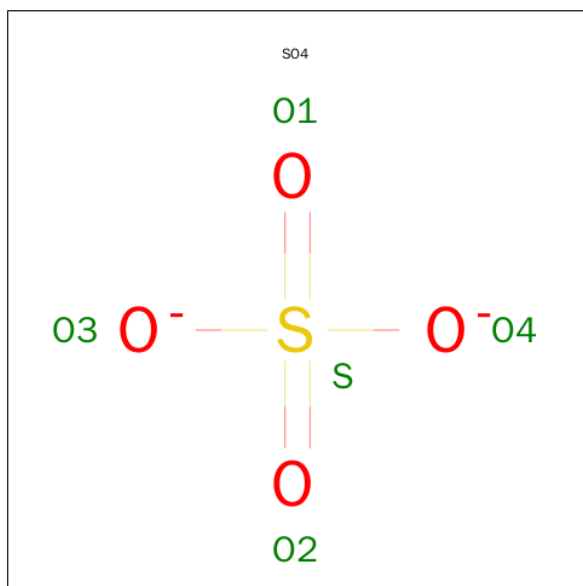
- Molecule 4 is a protein called thioredoxin 1.

Mol	Chain	Residues	Atoms					ZeroOcc	AltConf	Trace
4	B	106	Total	C	N	O	S	0	0	0
			798	514	128	153	3			

- Molecule 5 is MAGNESIUM ION (three-letter code: MG) (formula: Mg).

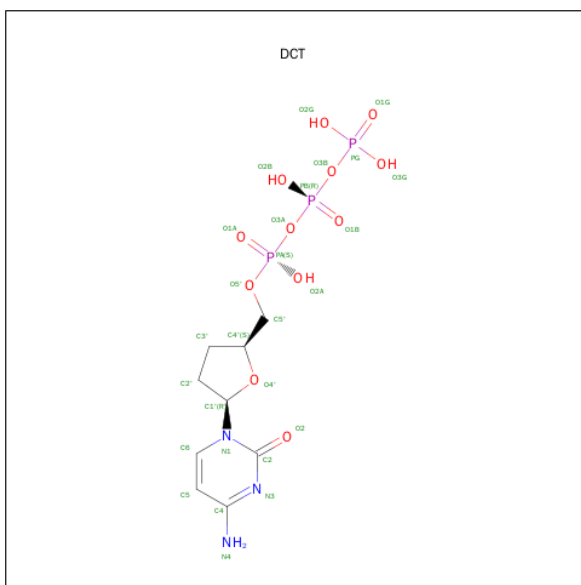
Mol	Chain	Residues	Atoms		ZeroOcc	AltConf
5	A	3	Total	Mg	0	0
			3	3		

- Molecule 6 is SULFATE ION (three-letter code: SO4) (formula: O₄S).



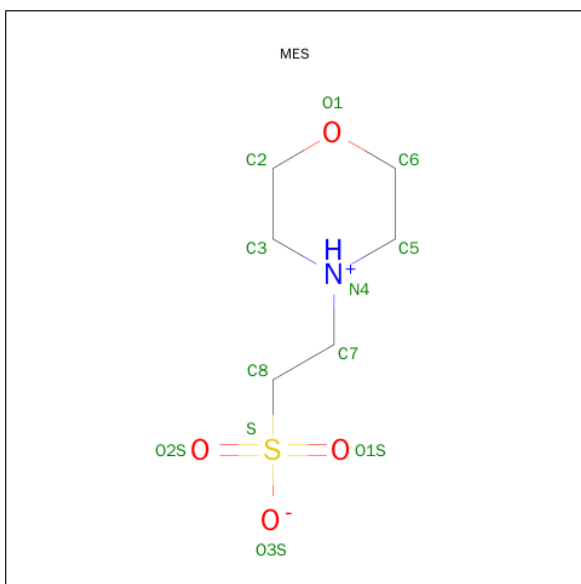
Mol	Chain	Residues	Atoms			ZeroOcc	AltConf
6	A	1	Total	O	S	0	0
			5	4	1		

- Molecule 7 is 2',3'-DIDEOXYCYTIDINE 5'-TRIPHOSPHATE (three-letter code: DCT) (formula: C₉H₁₆N₃O₁₂P₃).



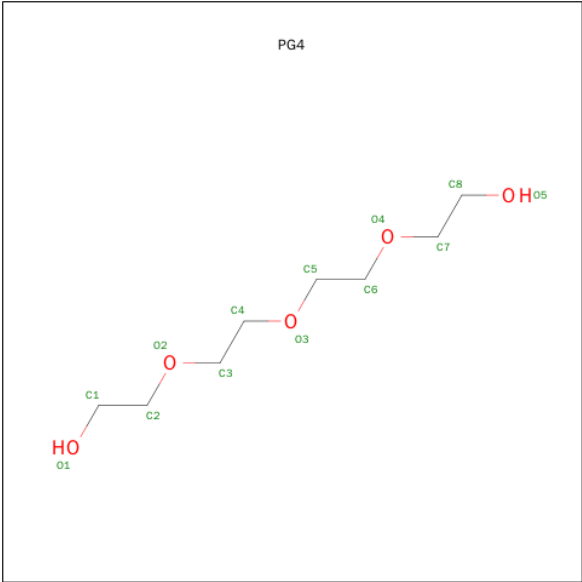
Mol	Chain	Residues	Atoms					ZeroOcc	AltConf
7	A	1	Total	C	N	O	P	0	0
			27	9	3	12	3		

- Molecule 8 is 2-(N-MORPHOLINO)-ETHANESULFONIC ACID (three-letter code: MES) (formula: $C_6H_{13}NO_4S$).



Mol	Chain	Residues	Atoms					ZeroOcc	AltConf
8	A	1	Total	C	N	O	S	0	0
			12	6	1	4	1		

- Molecule 9 is TETRAETHYLENE GLYCOL (three-letter code: PG4) (formula: $C_8H_{18}O_5$).

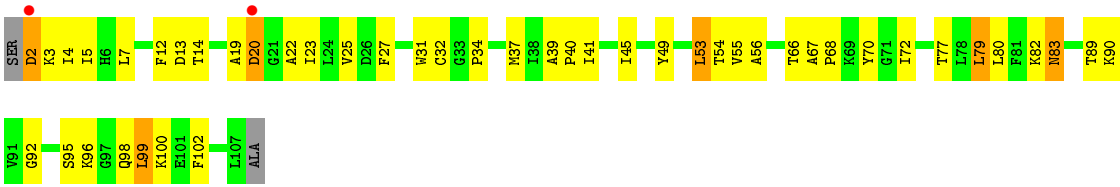


Mol	Chain	Residues	Atoms			ZeroOcc	AltConf
9	A	1	Total	C	O	0	0
			13	8	5		

- Molecule 10 is water.

Mol	Chain	Residues	Atoms		ZeroOcc	AltConf
10	A	319	Total	O	0	0
			319	319		
10	B	19	Total	O	0	0
			19	19		
10	C	16	Total	O	0	0
			16	16		
10	D	27	Total	O	0	0
			27	27		

● Molecule 4: thioredoxin 1



4 Data and refinement statistics

Property	Value	Source
Space group	P 2 ₁ 2 ₁ 2	Depositor
Cell constants a, b, c, α , β , γ	106.28Å 218.12Å 52.13Å 90.00° 90.00° 90.00°	Depositor
Resolution (Å)	28.71 – 2.54 28.71 – 2.54	Depositor EDS
% Data completeness (in resolution range)	95.0 (28.71-2.54) 94.8 (28.71-2.54)	Depositor EDS
R_{merge}	(Not available)	Depositor
R_{sym}	(Not available)	Depositor
$\langle I/\sigma(I) \rangle$ ¹	2.38 (at 2.54Å)	Xtriage
Refinement program	CNS 1.1	Depositor
R, R_{free}	0.220 , 0.255 0.216 , 0.251	Depositor DCC
R_{free} test set	1922 reflections (4.93%)	DCC
Wilson B-factor (Å ²)	34.3	Xtriage
Anisotropy	0.080	Xtriage
Bulk solvent k_{sol} (e/Å ³), B_{sol} (Å ²)	0.32 , 45.9	EDS
Estimated twinning fraction	No twinning to report.	Xtriage
L-test for twinning ²	$\langle L \rangle = 0.49$, $\langle L^2 \rangle = 0.32$	Xtriage
Outliers	0 of 38983 reflections	Xtriage
F_o, F_c correlation	0.93	EDS
Total number of atoms	7741	wwPDB-VP
Average B, all atoms (Å ²)	39.0	wwPDB-VP

Xtriage's analysis on translational NCS is as follows: *The largest off-origin peak in the Patterson function is 3.35% of the height of the origin peak. No significant pseudotranslation is detected.*

¹Intensities estimated from amplitudes.

²Theoretical values of $\langle |L| \rangle$, $\langle L^2 \rangle$ for acentric reflections are 0.5, 0.375 respectively for untwinned datasets, and 0.333, 0.2 for perfectly twinned datasets.

5 Model quality

5.1 Standard geometry

Bond lengths and bond angles in the following residue types are not validated in this section: 2DT, MG, PG4, SO4, MES, DCT

The Z score for a bond length (or angle) is the number of standard deviations the observed value is removed from the expected value. A bond length (or angle) with $|Z| > 5$ is considered an outlier worth inspection. RMSZ is the root-mean-square of all Z scores of the bond lengths (or angles).

Mol	Chain	Bond lengths		Bond angles	
		RMSZ	# Z >5	RMSZ	# Z >5
1	C	0.41	0/486	0.82	0/747
2	D	0.49	0/574	0.87	1/885 (0.1%)
3	A	0.35	0/5674	0.58	0/7683
4	B	0.34	0/813	0.58	0/1106
All	All	0.37	0/7547	0.63	1/10421 (0.0%)

Chiral center outliers are detected by calculating the chiral volume of a chiral center and verifying if the center is modelled as a planar moiety or with the opposite hand. A planarity outlier is detected by checking planarity of atoms in a peptide group, atoms in a mainchain group or atoms of a sidechain that are expected to be planar.

Mol	Chain	#Chirality outliers	#Planarity outliers
1	C	0	2
2	D	0	3
All	All	0	5

There are no bond length outliers.

All (1) bond angle outliers are listed below:

Mol	Chain	Res	Type	Atoms	Z	Observed(°)	Ideal(°)
2	D	2002	DT	N1-C1'-C2'	6.20	124.38	112.60

There are no chirality outliers.

All (5) planarity outliers are listed below:

Mol	Chain	Res	Type	Group
1	C	1020	DC	Sidechain
1	C	1021	DA	Sidechain
2	D	2002	DT	Sidechain

Continued on next page...

Continued from previous page...

Mol	Chain	Res	Type	Group
2	D	2005	DA	Sidechain
2	D	2007	DG	Sidechain

5.2 Too-close contacts

In the following table, the Non-H and H(model) columns list the number of non-hydrogen atoms and hydrogen atoms in the chain respectively. The H(added) column lists the number of hydrogen atoms added and optimized by MolProbity. The Clashes column lists the number of clashes within the asymmetric unit, whereas Symm-Clashes lists symmetry related clashes.

Mol	Chain	Non-H	H(model)	H(added)	Clashes	Symm-Clashes
1	C	451	0	245	24	0
2	D	514	0	284	7	0
3	A	5537	0	5399	154	0
4	B	798	0	794	32	0
5	A	3	0	0	0	0
6	A	5	0	0	1	0
7	A	27	0	12	3	0
8	A	12	0	13	0	0
9	A	13	0	18	1	0
10	A	319	0	0	11	0
10	B	19	0	0	1	0
10	C	16	0	0	0	0
10	D	27	0	0	0	0
All	All	7741	0	6765	204	0

The all-atom clashscore is defined as the number of clashes found per 1000 atoms (including hydrogen atoms). The all-atom clashscore for this structure is 15.

The worst 5 of 204 close contacts within the same asymmetric unit are listed below, sorted by their clash magnitude.

Atom-1	Atom-2	Interatomic distance (Å)	Clash overlap (Å)
3:A:392:ILE:HG12	10:A:4163:HOH:O	1.66	0.95
3:A:318:ARG:O	3:A:319:GLU:HB2	1.71	0.90
1:C:1020:DC:H6	1:C:1020:DC:H5'	1.39	0.85
4:B:41:ILE:O	4:B:45:ILE:HG12	1.82	0.79
3:A:599:ARG:HD3	3:A:620:LEU:HD11	1.62	0.79

There are no symmetry-related clashes.

5.3 Torsion angles [i](#)

5.3.1 Protein backbone [i](#)

In the following table, the Percentiles column shows the percent Ramachandran outliers of the chain as a percentile score with respect to all X-ray entries followed by that with respect to entries of similar resolution.

The Analysed column shows the number of residues for which the backbone conformation was analysed, and the total number of residues.

Mol	Chain	Analysed	Favoured	Allowed	Outliers	Percentiles	
3	A	696/698 (100%)	651 (94%)	36 (5%)	9 (1%)	15	25
4	B	104/108 (96%)	94 (90%)	8 (8%)	2 (2%)	10	15
All	All	800/806 (99%)	745 (93%)	44 (6%)	11 (1%)	14	23

5 of 11 Ramachandran outliers are listed below:

Mol	Chain	Res	Type
3	A	156	ASP
3	A	319	GLU
3	A	318	ARG
3	A	580	VAL
4	B	83	ASN

5.3.2 Protein sidechains [i](#)

In the following table, the Percentiles column shows the percent sidechain outliers of the chain as a percentile score with respect to all X-ray entries followed by that with respect to entries of similar resolution.

The Analysed column shows the number of residues for which the sidechain conformation was analysed, and the total number of residues.

Mol	Chain	Analysed	Rotameric	Outliers	Percentiles	
3	A	571/579 (99%)	552 (97%)	19 (3%)	45	71
4	B	83/87 (95%)	75 (90%)	8 (10%)	10	18
All	All	654/666 (98%)	627 (96%)	27 (4%)	37	61

5 of 27 residues with a non-rotameric sidechain are listed below:

Mol	Chain	Res	Type
3	A	432	HIS

Continued on next page...

Continued from previous page...

Mol	Chain	Res	Type
3	A	557	GLU
4	B	80	LEU
3	A	536	LYS
3	A	181	LEU

Some sidechains can be flipped to improve hydrogen bonding and reduce clashes. 5 of 10 such sidechains are listed below:

Mol	Chain	Res	Type
3	A	306	GLN
3	A	343	GLN
3	A	450	GLN
3	A	303	ASN
3	A	347	GLN

5.3.3 RNA ⓘ

There are no RNA molecules in this entry.

5.4 Non-standard residues in protein, DNA, RNA chains ⓘ

1 non-standard protein/DNA/RNA residue is modelled in this entry.

In the following table, the Counts columns list the number of bonds (or angles) for which Mogul statistics could be retrieved, the number of bonds (or angles) that are observed in the model and the number of bonds (or angles) that are defined in the chemical component dictionary. The Link column lists molecule types, if any, to which the group is linked. The Z score for a bond length (or angle) is the number of standard deviations the observed value is removed from the expected value. A bond length (or angle) with $|Z| > 2$ is considered an outlier worth inspection. RMSZ is the root-mean-square of all Z scores of the bond lengths (or angles).

Mol	Type	Chain	Res	Link	Bond lengths			Bond angles		
					Counts	RMSZ	$\# Z > 2$	Counts	RMSZ	$\# Z > 2$
1	2DT	C	1022	1,2	11,20,21	1.35	2 (18%)	12,28,31	5.01	3 (25%)

In the following table, the Chirals column lists the number of chiral outliers, the number of chiral centers analysed, the number of these observed in the model and the number defined in the chemical component dictionary. Similar counts are reported in the Torsion and Rings columns. '-' means no outliers of that kind were identified.

Mol	Type	Chain	Res	Link	Chirals	Torsions	Rings
1	2DT	C	1022	1,2	-	0/3/18/19	0/2/2/2

All (2) bond length outliers are listed below:

Mol	Chain	Res	Type	Atoms	Z	Observed(Å)	Ideal(Å)
1	C	1022	2DT	C4-N3	2.72	1.38	1.33
1	C	1022	2DT	C6-N1	2.95	1.39	1.35

All (3) bond angle outliers are listed below:

Mol	Chain	Res	Type	Atoms	Z	Observed(°)	Ideal(°)
1	C	1022	2DT	C5-C4-N3	-9.13	114.98	125.14
1	C	1022	2DT	C5M-C5-C6	2.27	123.18	118.62
1	C	1022	2DT	C4-N3-C2	14.37	127.67	115.25

There are no chirality outliers.

There are no torsion outliers.

There are no ring outliers.

1 monomer is involved in 1 short contact:

Mol	Chain	Res	Type	Clashes	Symm-Clashes
1	C	1022	2DT	1	0

5.5 Carbohydrates [i](#)

There are no carbohydrates in this entry.

5.6 Ligand geometry [i](#)

Of 7 ligands modelled in this entry, 3 are monoatomic - leaving 4 for Mogul analysis.

In the following table, the Counts columns list the number of bonds (or angles) for which Mogul statistics could be retrieved, the number of bonds (or angles) that are observed in the model and the number of bonds (or angles) that are defined in the chemical component dictionary. The Link column lists molecule types, if any, to which the group is linked. The Z score for a bond length (or angle) is the number of standard deviations the observed value is removed from the expected value. A bond length (or angle) with $|Z| > 2$ is considered an outlier worth inspection. RMSZ is the root-mean-square of all Z scores of the bond lengths (or angles).

Mol	Type	Chain	Res	Link	Bond lengths			Bond angles		
					Counts	RMSZ	$\# Z > 2$	Counts	RMSZ	$\# Z > 2$
7	DCT	A	1023	5	20,28,28	0.93	0	29,43,43	1.48	5 (17%)
8	MES	A	4008	-	11,12,12	0.91	0	14,16,16	0.97	1 (7%)
9	PG4	A	4009	-	12,12,12	1.03	1 (8%)	11,11,11	2.02	4 (36%)

Mol	Type	Chain	Res	Link	Bond lengths			Bond angles		
					Counts	RMSZ	# Z > 2	Counts	RMSZ	# Z > 2
6	SO4	A	999	-	4,4,4	1.36	0	6,6,6	0.20	0

In the following table, the Chirals column lists the number of chiral outliers, the number of chiral centers analysed, the number of these observed in the model and the number defined in the chemical component dictionary. Similar counts are reported in the Torsion and Rings columns. '-' means no outliers of that kind were identified.

Mol	Type	Chain	Res	Link	Chirals	Torsions	Rings
7	DCT	A	1023	5	-	0/18/31/31	0/2/2/2
8	MES	A	4008	-	-	0/6/14/14	0/1/1/1
9	PG4	A	4009	-	-	0/10/10/10	0/0/0/0
6	SO4	A	999	-	-	0/0/0/0	0/0/0/0

All (1) bond length outliers are listed below:

Mol	Chain	Res	Type	Atoms	Z	Observed(Å)	Ideal(Å)
9	A	4009	PG4	C4-C3	2.11	1.59	1.48

The worst 5 of 10 bond angle outliers are listed below:

Mol	Chain	Res	Type	Atoms	Z	Observed(°)	Ideal(°)
9	A	4009	PG4	C3-O2-C2	-4.16	95.44	113.31
7	A	1023	DCT	O3A-PA-O5'	-3.85	92.73	102.94
9	A	4009	PG4	C5-O3-C4	-2.97	100.55	113.31
8	A	4008	MES	O1S-S-C8	-2.85	104.47	106.91
9	A	4009	PG4	O2-C2-C1	-2.63	98.31	110.43

There are no chirality outliers.

There are no torsion outliers.

There are no ring outliers.

3 monomers are involved in 5 short contacts:

Mol	Chain	Res	Type	Clashes	Symm-Clashes
7	A	1023	DCT	3	0
9	A	4009	PG4	1	0
6	A	999	SO4	1	0

5.7 Other polymers ⓘ

There are no such residues in this entry.

5.8 Polymer linkage issues ⓘ

There are no chain breaks in this entry.

6 Fit of model and data [i](#)

6.1 Protein, DNA and RNA chains [i](#)

In the following table, the column labelled ‘#RSRZ> 2’ contains the number (and percentage) of RSRZ outliers, followed by percent RSRZ outliers for the chain as percentile scores relative to all X-ray entries and entries of similar resolution. The OWAB column contains the minimum, median, 95th percentile and maximum values of the occupancy-weighted average B-factor per residue. The column labelled ‘Q< 0.9’ lists the number of (and percentage) of residues with an average occupancy less than 0.9.

Mol	Chain	Analysed	<RSRZ>	#RSRZ>2	OWAB(Å ²)	Q<0.9
1	C	21/22 (95%)	1.16	5 (23%) 1 1	25, 83, 98, 100	0
2	D	25/26 (96%)	0.96	6 (24%) 1 1	19, 56, 100, 100	0
3	A	698/698 (100%)	-0.02	31 (4%) 38 44	13, 28, 68, 86	0
4	B	106/108 (98%)	0.17	2 (1%) 70 74	24, 47, 69, 73	0
All	All	850/854 (99%)	0.06	44 (5%) 31 36	13, 31, 74, 100	0

The worst 5 of 44 RSRZ outliers are listed below:

Mol	Chain	Res	Type	RSRZ
3	A	582	GLY	7.4
3	A	580	VAL	5.1
3	A	317	THR	4.5
3	A	303	ASN	4.4
3	A	358	ASP	4.3

6.2 Non-standard residues in protein, DNA, RNA chains [i](#)

In the following table, the Atoms column lists the number of modelled atoms in the group and the number defined in the chemical component dictionary. LLDF column lists the quality of electron density of the group with respect to its neighbouring residues in protein, DNA or RNA chains. The B-factors column lists the minimum, median, 95th percentile and maximum values of B factors of atoms in the group. The column labelled ‘Q< 0.9’ lists the number of atoms with occupancy less than 0.9.

Mol	Type	Chain	Res	Atoms	RSCC	RSR	LLDF	B-factors(Å ²)	Q<0.9
1	2DT	C	1022	19/20	0.98	0.12	-	19,22,26,27	0

6.3 Carbohydrates [i](#)

There are no carbohydrates in this entry.

6.4 Ligands [i](#)

In the following table, the Atoms column lists the number of modelled atoms in the group and the number defined in the chemical component dictionary. LLDF column lists the quality of electron density of the group with respect to its neighbouring residues in protein, DNA or RNA chains. The B-factors column lists the minimum, median, 95th percentile and maximum values of B factors of atoms in the group. The column labelled 'Q< 0.9' lists the number of atoms with occupancy less than 0.9.

Mol	Type	Chain	Res	Atoms	RSCC	RSR	LLDF	B-factors(\AA^2)	Q<0.9
9	PG4	A	4009	13/13	0.83	0.31	7.91	56,59,63,64	0
5	MG	A	4003	1/1	0.94	0.24	2.51	22,22,22,22	0
6	SO4	A	999	5/5	0.98	0.13	-0.02	43,44,45,46	0
8	MES	A	4008	12/12	0.97	0.13	-0.35	40,42,46,46	0
7	DCT	A	1023	27/27	0.98	0.12	-0.72	17,22,26,26	0
5	MG	A	4001	1/1	0.97	0.11	-2.40	16,16,16,16	0
5	MG	A	4002	1/1	0.88	0.11	-	31,31,31,31	0

6.5 Other polymers [i](#)

There are no such residues in this entry.