



Full wwPDB X-ray Structure Validation Report ⓘ

Feb 1, 2016 – 01:15 PM GMT

PDB ID : 3TE2
Title : Crystal structure of HSC K16S
Authors : Czyzewski, B.K.; Wang, D-N.
Deposited on : 2011-08-11
Resolution : 2.30 Å(reported)

This is a Full wwPDB X-ray Structure Validation Report for a publicly released PDB entry.
We welcome your comments at validation@mail.wwpdb.org
A user guide is available at
<http://wwpdb.org/validation/2016/XrayValidationReportHelp>
with specific help available everywhere you see the ⓘ symbol.

The following versions of software and data (see [references ⓘ](#)) were used in the production of this report:

MolProbity : 4.02b-467
Mogul : 1.7 (RC4), CSD as536be (2015)
Xtriage (Phenix) : 1.9-1692
EDS : rb-20026688
Percentile statistics : 20151230.v01 (using entries in the PDB archive December 30th 2015)
Refmac : 5.8.0135
CCP4 : 6.5.0
Ideal geometry (proteins) : Engh & Huber (2001)
Ideal geometry (DNA, RNA) : Parkinson et al. (1996)
Validation Pipeline (wwPDB-VP) : trunk26865

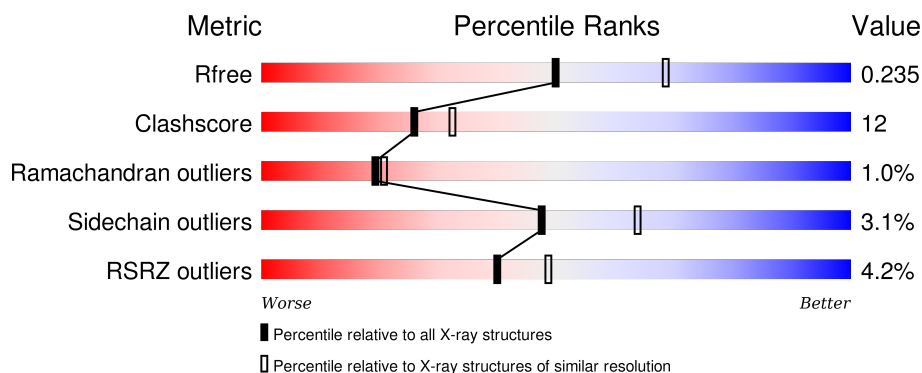
1 Overall quality at a glance

The following experimental techniques were used to determine the structure:

X-RAY DIFFRACTION

The reported resolution of this entry is 2.30 Å.

Percentile scores (ranging between 0-100) for global validation metrics of the entry are shown in the following graphic. The table shows the number of entries on which the scores are based.



Metric	Whole archive (#Entries)	Similar resolution (#Entries, resolution range(Å))
R_{free}	91344	3852 (2.30-2.30)
Clashscore	102246	4452 (2.30-2.30)
Ramachandran outliers	100387	4410 (2.30-2.30)
Sidechain outliers	100360	4409 (2.30-2.30)
RSRZ outliers	91569	3857 (2.30-2.30)

The table below summarises the geometric issues observed across the polymeric chains and their fit to the electron density. The red, orange, yellow and green segments on the lower bar indicate the fraction of residues that contain outliers for ≥ 3 , 2, 1 and 0 types of geometric quality criteria. A grey segment represents the fraction of residues that are not modelled. The numeric value for each fraction is indicated below the corresponding segment, with a dot representing fractions $\leq 5\%$. The upper red bar (where present) indicates the fraction of residues that have poor fit to the electron density. The numeric value is given above the bar.

Mol	Chain	Length	Quality of chain
1	A	268	<div> <div>4%</div> <div> <div></div> <div>81%</div> <div>13%</div> <div>• •</div> </div> </div>
1	B	268	<div> <div>3%</div> <div> <div></div> <div>81%</div> <div>12%</div> <div>• •</div> </div> </div>
1	C	268	<div> <div>10%</div> <div> <div></div> <div>72%</div> <div>22%</div> <div>• • •</div> </div> </div>
1	D	268	<div> <div>2%</div> <div> <div></div> <div>79%</div> <div>15%</div> <div>• •</div> </div> </div>
1	E	268	<div> <div>2%</div> <div> <div></div> <div>79%</div> <div>15%</div> <div>• •</div> </div> </div>

The following table lists non-polymeric compounds, carbohydrate monomers and non-standard residues in protein, DNA, RNA chains that are outliers for geometric or electron-density-fit criteria:

Mol	Type	Chain	Res	Chirality	Geometry	Clashes	Electron density
2	PG4	A	266	-	-	-	X
2	PG4	E	268	-	-	-	X
3	BOG	A	267	-	-	-	X
3	BOG	A	268	-	-	-	X
3	BOG	B	267	-	-	-	X
3	BOG	B	268	-	-	-	X
3	BOG	B	269	-	-	-	X
3	BOG	D	267	-	-	-	X
3	BOG	E	267	-	-	-	X

2 Entry composition

There are 4 unique types of molecules in this entry. The entry contains 10369 atoms, of which 286 are hydrogens and 0 are deuteriums.

In the tables below, the ZeroOcc column contains the number of atoms modelled with zero occupancy, the AltConf column contains the number of residues with at least one atom in alternate conformation and the Trace column contains the number of residues modelled with at most 2 atoms.

- Molecule 1 is a protein called formate/nitrite transporter.

Mol	Chain	Residues	Atoms					ZeroOcc	AltConf	Trace
1	A	257	Total	C	N	O	S	0	0	0
			1894	1241	298	341	14			
1	B	257	Total	C	N	O	S	0	0	0
			1898	1244	299	341	14			
1	C	266	Total	C	N	O	S	0	0	0
			1966	1287	310	355	14			
1	D	257	Total	C	N	O	S	0	0	0
			1898	1244	299	341	14			
1	E	256	Total	C	N	O	S	0	0	0
			1887	1238	295	340	14			

There are 60 discrepancies between the modelled and reference sequences:

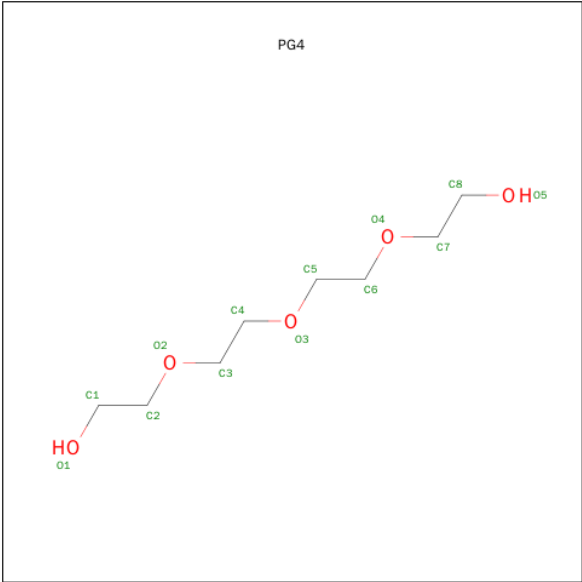
Chain	Residue	Modelled	Actual	Comment	Reference
A	-2	MET	-	EXPRESSION TAG	UNP Q186B7
A	-1	GLY	-	EXPRESSION TAG	UNP Q186B7
A	0	ARG	-	EXPRESSION TAG	UNP Q186B7
A	1	ALA	-	EXPRESSION TAG	UNP Q186B7
A	16	SER	LYS	ENGINEERED MUTATION	UNP Q186B7
A	259	ALA	-	EXPRESSION TAG	UNP Q186B7
A	260	ALA	-	EXPRESSION TAG	UNP Q186B7
A	261	ALA	-	EXPRESSION TAG	UNP Q186B7
A	262	GLU	-	EXPRESSION TAG	UNP Q186B7
A	263	ASN	-	EXPRESSION TAG	UNP Q186B7
A	264	LEU	-	EXPRESSION TAG	UNP Q186B7
A	265	TYR	-	EXPRESSION TAG	UNP Q186B7
B	-2	MET	-	EXPRESSION TAG	UNP Q186B7
B	-1	GLY	-	EXPRESSION TAG	UNP Q186B7
B	0	ARG	-	EXPRESSION TAG	UNP Q186B7
B	1	ALA	-	EXPRESSION TAG	UNP Q186B7
B	16	SER	LYS	ENGINEERED MUTATION	UNP Q186B7
B	259	ALA	-	EXPRESSION TAG	UNP Q186B7
B	260	ALA	-	EXPRESSION TAG	UNP Q186B7

Continued on next page...

Continued from previous page...

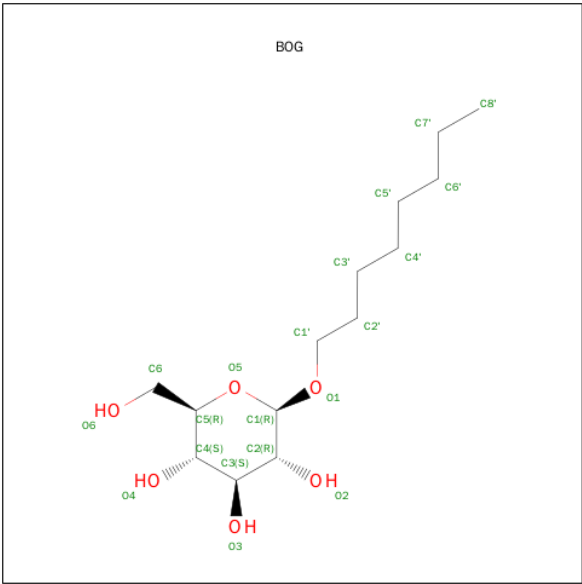
Chain	Residue	Modelled	Actual	Comment	Reference
B	261	ALA	-	EXPRESSION TAG	UNP Q186B7
B	262	GLU	-	EXPRESSION TAG	UNP Q186B7
B	263	ASN	-	EXPRESSION TAG	UNP Q186B7
B	264	LEU	-	EXPRESSION TAG	UNP Q186B7
B	265	TYR	-	EXPRESSION TAG	UNP Q186B7
C	-2	MET	-	EXPRESSION TAG	UNP Q186B7
C	-1	GLY	-	EXPRESSION TAG	UNP Q186B7
C	0	ARG	-	EXPRESSION TAG	UNP Q186B7
C	1	ALA	-	EXPRESSION TAG	UNP Q186B7
C	16	SER	LYS	ENGINEERED MUTATION	UNP Q186B7
C	259	ALA	-	EXPRESSION TAG	UNP Q186B7
C	260	ALA	-	EXPRESSION TAG	UNP Q186B7
C	261	ALA	-	EXPRESSION TAG	UNP Q186B7
C	262	GLU	-	EXPRESSION TAG	UNP Q186B7
C	263	ASN	-	EXPRESSION TAG	UNP Q186B7
C	264	LEU	-	EXPRESSION TAG	UNP Q186B7
C	265	TYR	-	EXPRESSION TAG	UNP Q186B7
D	-2	MET	-	EXPRESSION TAG	UNP Q186B7
D	-1	GLY	-	EXPRESSION TAG	UNP Q186B7
D	0	ARG	-	EXPRESSION TAG	UNP Q186B7
D	1	ALA	-	EXPRESSION TAG	UNP Q186B7
D	16	SER	LYS	ENGINEERED MUTATION	UNP Q186B7
D	259	ALA	-	EXPRESSION TAG	UNP Q186B7
D	260	ALA	-	EXPRESSION TAG	UNP Q186B7
D	261	ALA	-	EXPRESSION TAG	UNP Q186B7
D	262	GLU	-	EXPRESSION TAG	UNP Q186B7
D	263	ASN	-	EXPRESSION TAG	UNP Q186B7
D	264	LEU	-	EXPRESSION TAG	UNP Q186B7
D	265	TYR	-	EXPRESSION TAG	UNP Q186B7
E	-2	MET	-	EXPRESSION TAG	UNP Q186B7
E	-1	GLY	-	EXPRESSION TAG	UNP Q186B7
E	0	ARG	-	EXPRESSION TAG	UNP Q186B7
E	1	ALA	-	EXPRESSION TAG	UNP Q186B7
E	16	SER	LYS	ENGINEERED MUTATION	UNP Q186B7
E	259	ALA	-	EXPRESSION TAG	UNP Q186B7
E	260	ALA	-	EXPRESSION TAG	UNP Q186B7
E	261	ALA	-	EXPRESSION TAG	UNP Q186B7
E	262	GLU	-	EXPRESSION TAG	UNP Q186B7
E	263	ASN	-	EXPRESSION TAG	UNP Q186B7
E	264	LEU	-	EXPRESSION TAG	UNP Q186B7
E	265	TYR	-	EXPRESSION TAG	UNP Q186B7

- Molecule 2 is TETRAETHYLENE GLYCOL (three-letter code: PG4) (formula: C₈H₁₈O₅).



Mol	Chain	Residues	Atoms				ZeroOcc	AltConf
2	A	1	Total	C	H	O	0	0
			31	8	18	5		
2	B	1	Total	C	H	O	0	0
			31	8	18	5		
2	C	1	Total	C	H	O	0	0
			31	8	18	5		
2	D	1	Total	C	H	O	0	0
			31	8	18	5		
2	E	1	Total	C	H	O	0	0
			31	8	18	5		

- Molecule 3 is SUGAR (B-OCTYLGLUCOSIDE) (three-letter code: BOG) (formula: C₁₄H₂₈O₆).



Mol	Chain	Residues	Atoms				ZeroOcc	AltConf
3	A	1	Total	C	H	O	0	0
			48	14	28	6		
3	A	1	Total	C	H	O	0	0
			48	14	28	6		
3	B	1	Total	C	H	O	0	0
			48	14	28	6		
3	B	1	Total	C	H	O	0	0
			48	14	28	6		
3	B	1	Total	C	H	O	0	0
			48	14	28	6		
3	D	1	Total	C	H	O	0	0
			48	14	28	6		
3	E	1	Total	C	H	O	0	0
			48	14	28	6		

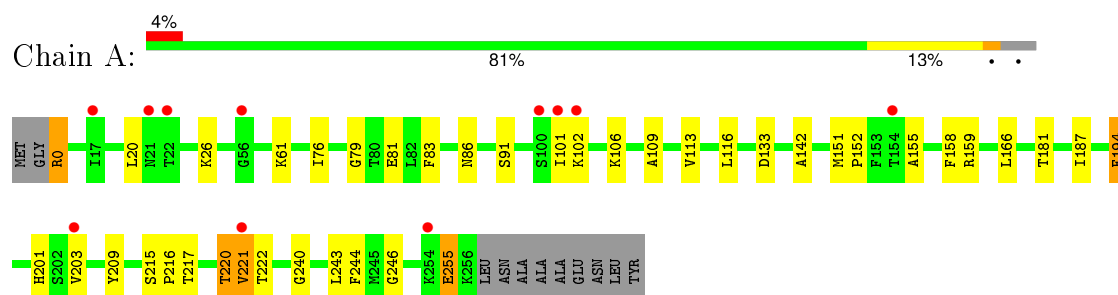
- Molecule 4 is water.

Mol	Chain	Residues	Atoms		ZeroOcc	AltConf
4	A	77	Total	O	0	0
			77	77		
4	B	78	Total	O	0	0
			78	78		
4	C	38	Total	O	0	0
			38	38		
4	D	72	Total	O	0	0
			72	72		
4	E	70	Total	O	0	0
			70	70		

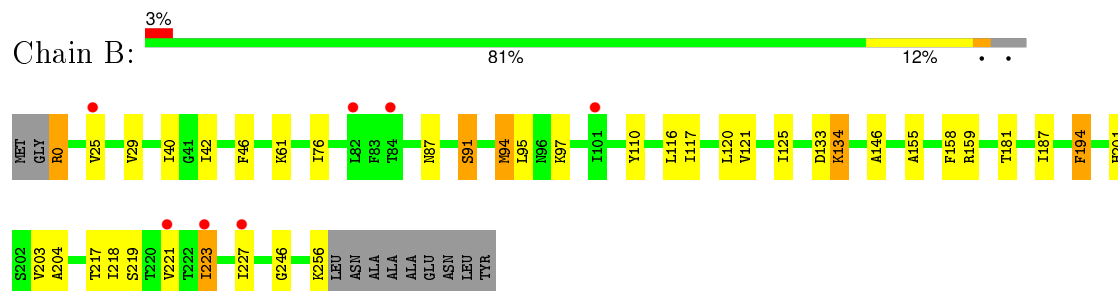
3 Residue-property plots [i](#)

These plots are drawn for all protein, RNA and DNA chains in the entry. The first graphic for a chain summarises the proportions of errors displayed in the second graphic. The second graphic shows the sequence view annotated by issues in geometry and electron density. Residues are color-coded according to the number of geometric quality criteria for which they contain at least one outlier: green = 0, yellow = 1, orange = 2 and red = 3 or more. A red dot above a residue indicates a poor fit to the electron density ($RSRZ > 2$). Stretches of 2 or more consecutive residues without any outlier are shown as a green connector. Residues present in the sample, but not in the model, are shown in grey.

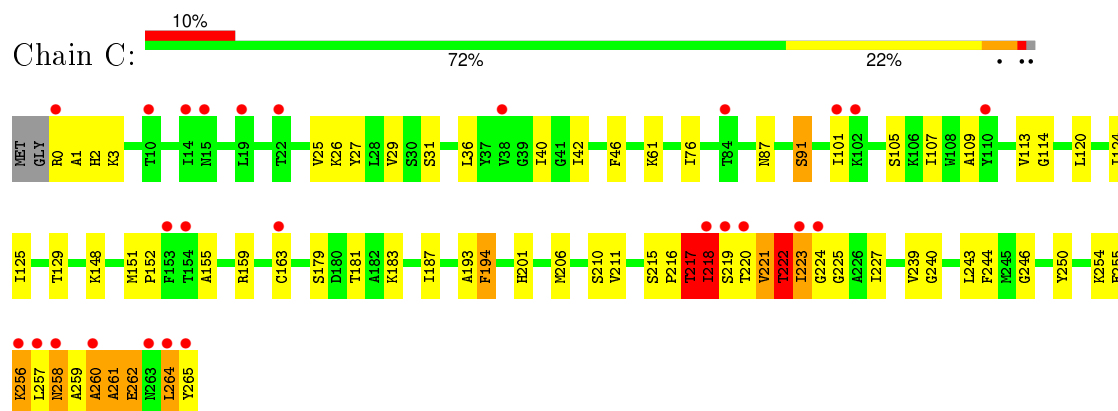
- Molecule 1: formate/nitrite transporter



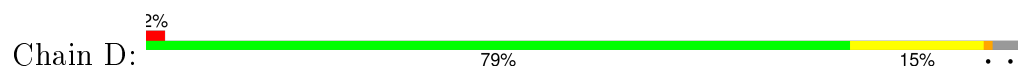
- Molecule 1: formate/nitrite transporter

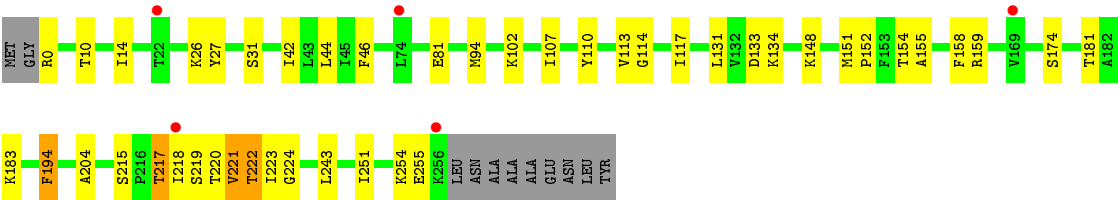


- Molecule 1: formate/nitrite transporter

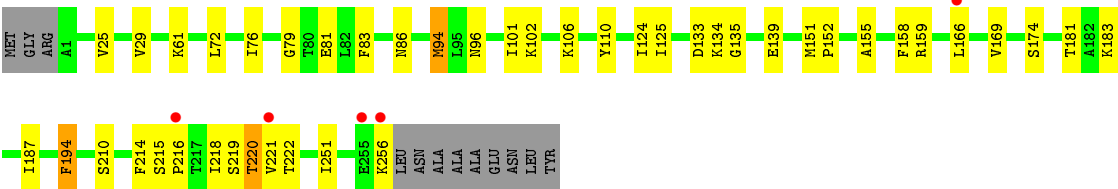
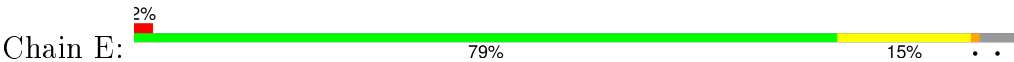


- Molecule 1: formate/nitrite transporter





• Molecule 1: formate/nitrite transporter



4 Data and refinement statistics

Property	Value	Source
Space group	P 21 21 21	Depositor
Cell constants a, b, c, α , β , γ	98.69Å 118.70Å 150.67Å 90.00° 90.00° 90.00°	Depositor
Resolution (Å)	32.14 – 2.30 32.14 – 2.30	Depositor EDS
% Data completeness (in resolution range)	99.8 (32.14-2.30) 93.4 (32.14-2.30)	Depositor EDS
R_{merge}	0.13	Depositor
R_{sym}	(Not available)	Depositor
$\langle I/\sigma(I) \rangle$ ¹	3.10 (at 2.29Å)	Xtriage
Refinement program	PHENIX (PHENIX.REFINE: 1.7.1_743)	Depositor
R, R_{free}	0.185 , 0.230 0.202 , 0.235	Depositor DCC
R_{free} test set	3972 reflections (5.65%)	DCC
Wilson B-factor (Å ²)	33.2	Xtriage
Anisotropy	0.277	Xtriage
Bulk solvent k_{sol} (e/Å ³), B_{sol} (Å ²)	0.33 , 57.4	EDS
Estimated twinning fraction	No twinning to report.	Xtriage
L-test for twinning ²	$\langle L \rangle = 0.46$, $\langle L^2 \rangle = 0.29$	Xtriage
Outliers	0 of 79267 reflections	Xtriage
F_o, F_c correlation	0.94	EDS
Total number of atoms	10369	wwPDB-VP
Average B, all atoms (Å ²)	41.0	wwPDB-VP

Xtriage's analysis on translational NCS is as follows: *The largest off-origin peak in the Patterson function is 4.16% of the height of the origin peak. No significant pseudotranslation is detected.*

¹Intensities estimated from amplitudes.

²Theoretical values of $\langle |L| \rangle$, $\langle L^2 \rangle$ for acentric reflections are 0.5, 0.375 respectively for untwinned datasets, and 0.333, 0.2 for perfectly twinned datasets.

5 Model quality [i](#)

5.1 Standard geometry [i](#)

Bond lengths and bond angles in the following residue types are not validated in this section: PG4, BOG

The Z score for a bond length (or angle) is the number of standard deviations the observed value is removed from the expected value. A bond length (or angle) with $|Z| > 5$ is considered an outlier worth inspection. RMSZ is the root-mean-square of all Z scores of the bond lengths (or angles).

Mol	Chain	Bond lengths		Bond angles	
		RMSZ	$\# Z > 5$	RMSZ	$\# Z > 5$
1	A	0.28	0/1926	0.42	0/2612
1	B	0.27	0/1930	0.41	0/2616
1	C	0.26	0/1999	0.41	0/2711
1	D	0.28	0/1930	0.41	0/2616
1	E	0.27	0/1919	0.41	0/2602
All	All	0.27	0/9704	0.41	0/13157

There are no bond length outliers.

There are no bond angle outliers.

There are no chirality outliers.

There are no planarity outliers.

5.2 Too-close contacts [i](#)

In the following table, the Non-H and H(model) columns list the number of non-hydrogen atoms and hydrogen atoms in the chain respectively. The H(added) column lists the number of hydrogen atoms added and optimized by MolProbity. The Clashes column lists the number of clashes within the asymmetric unit, whereas Symm-Clashes lists symmetry related clashes.

Mol	Chain	Non-H	H(model)	H(added)	Clashes	Symm-Clashes
1	A	1894	0	1988	33	0
1	B	1898	0	1999	39	0
1	C	1966	0	2063	101	0
1	D	1898	0	1999	43	0
1	E	1887	0	1986	45	0
2	A	13	18	17	1	0
2	B	13	18	17	4	0
2	C	13	18	17	6	0

Continued on next page...

Continued from previous page...

Mol	Chain	Non-H	H(model)	H(added)	Clashes	Symm-Clashes
2	D	13	18	17	1	0
2	E	13	18	17	2	0
3	A	40	56	56	4	0
3	B	60	84	84	12	0
3	D	20	28	28	1	0
3	E	20	28	28	8	0
4	A	77	0	0	2	0
4	B	78	0	0	5	0
4	C	38	0	0	4	0
4	D	72	0	0	5	0
4	E	70	0	0	4	0
All	All	10083	286	10316	249	0

The all-atom clashscore is defined as the number of clashes found per 1000 atoms (including hydrogen atoms). The all-atom clashscore for this structure is 12.

All (249) close contacts within the same asymmetric unit are listed below, sorted by their clash magnitude.

Atom-1	Atom-2	Interatomic distance (Å)	Clash overlap (Å)
1:C:258:ASN:HA	1:C:260:ALA:N	1.51	1.25
1:C:258:ASN:CA	1:C:260:ALA:H	1.59	1.14
1:C:258:ASN:N	1:C:259:ALA:HB3	1.60	1.14
1:C:0:ARG:CB	1:C:1:ALA:HA	1.82	1.10
3:B:269:BOG:H2'2	1:D:181:THR:HG21	1.31	1.06
1:C:256:LYS:CG	1:C:264:LEU:HG	1.86	1.04
1:C:256:LYS:HG2	1:C:264:LEU:CG	1.87	1.04
1:C:223:ILE:HG23	1:C:227:ILE:CD1	1.88	1.03
1:C:0:ARG:HB3	1:C:1:ALA:CA	1.87	1.02
1:C:223:ILE:CG2	1:C:227:ILE:HD11	1.90	1.01
1:C:258:ASN:H	1:C:259:ALA:CB	1.75	1.00
1:C:223:ILE:HG23	1:C:227:ILE:HD11	0.98	0.98
1:C:227:ILE:HD12	1:C:227:ILE:H	1.27	0.97
1:C:256:LYS:HG2	1:C:264:LEU:HG	0.98	0.96
1:C:258:ASN:H	1:C:259:ALA:HB3	0.80	0.93
1:C:0:ARG:HB3	1:C:1:ALA:HA	0.94	0.89
1:D:220:THR:O	1:D:220:THR:HG23	1.72	0.89
1:C:264:LEU:O	1:C:265:TYR:HB3	1.74	0.88
1:C:256:LYS:NZ	1:C:264:LEU:HD21	1.87	0.87
1:C:256:LYS:HD3	1:C:264:LEU:HD11	1.56	0.87
3:B:269:BOG:C2'	1:D:181:THR:HG21	2.07	0.84
1:B:133:ASP:O	1:B:217:THR:HG21	1.78	0.84

Continued on next page...

Continued from previous page...

Atom-1	Atom-2	Interatomic distance (Å)	Clash overlap (Å)
1:B:97:LYS:NZ	4:B:334:HOH:O	2.12	0.81
1:D:215:SER:OG	1:D:217:THR:HG22	1.81	0.81
1:C:262:GLU:OE1	4:C:296:HOH:O	1.99	0.80
1:C:218:ILE:HG13	1:C:219:SER:N	1.94	0.80
1:C:259:ALA:C	1:C:261:ALA:H	1.85	0.80
1:C:227:ILE:HD12	1:C:227:ILE:N	1.98	0.79
1:B:76:ILE:HG13	1:B:187:ILE:HD11	1.62	0.79
1:C:227:ILE:CD1	1:C:227:ILE:H	1.97	0.78
1:B:0:ARG:NH2	1:E:81:GLU:OE2	2.16	0.78
1:A:255:GLU:O	1:A:255:GLU:HG2	1.80	0.77
1:C:258:ASN:HA	1:C:260:ALA:H	0.67	0.77
1:B:61:LYS:HD3	2:B:266:PG4:H21	1.67	0.76
3:B:269:BOG:H2'1	1:C:181:THR:HG21	1.69	0.75
1:B:155:ALA:O	1:B:159:ARG:HG3	1.87	0.74
1:C:221:VAL:O	1:C:222:THR:HB	1.86	0.73
1:D:217:THR:O	4:D:348:HOH:O	2.07	0.73
1:C:258:ASN:O	4:C:296:HOH:O	2.06	0.73
1:D:217:THR:HG23	1:D:217:THR:O	1.89	0.71
1:E:220:THR:HG23	1:E:220:THR:O	1.90	0.71
1:B:218:ILE:O	4:B:344:HOH:O	2.09	0.70
3:B:269:BOG:O2	4:B:346:HOH:O	2.05	0.70
1:D:151:MET:HG3	1:D:152:PRO:HD2	1.72	0.70
1:A:81:GLU:OE2	4:A:304:HOH:O	2.09	0.70
1:C:76:ILE:HG13	1:C:187:ILE:HD11	1.74	0.69
1:E:76:ILE:HG13	1:E:187:ILE:HD11	1.73	0.69
1:D:221:VAL:O	4:D:280:HOH:O	2.11	0.68
1:C:256:LYS:O	1:C:259:ALA:HB2	1.93	0.67
3:B:269:BOG:H3'2	1:E:181:THR:HG21	1.76	0.67
1:C:256:LYS:CE	1:C:264:LEU:HD21	2.24	0.67
1:C:101:ILE:HD12	1:C:101:ILE:H	1.59	0.67
1:D:220:THR:CG2	1:D:220:THR:O	2.44	0.65
1:C:257:LEU:O	1:C:258:ASN:CB	2.45	0.65
1:D:81:GLU:OE2	4:D:325:HOH:O	2.15	0.64
1:C:0:ARG:HG2	1:C:2:HIS:H	1.63	0.64
1:D:133:ASP:O	1:D:134:LYS:HG2	1.98	0.64
1:E:151:MET:HG3	1:E:152:PRO:HD2	1.77	0.64
1:C:101:ILE:HD12	1:C:101:ILE:N	2.13	0.63
1:C:61:LYS:HD3	2:C:266:PG4:H72	1.80	0.63
1:A:101:ILE:H	1:A:101:ILE:HD12	1.63	0.63
1:E:256:LYS:NZ	1:E:256:LYS:HB2	2.14	0.63
1:A:142:ALA:O	1:A:220:THR:HG21	1.99	0.62

Continued on next page...

Continued from previous page...

Atom-1	Atom-2	Interatomic distance (Å)	Clash overlap (Å)
1:C:219:SER:O	1:C:221:VAL:HG23	1.98	0.62
1:B:181:THR:HG21	3:B:269:BOG:H3'1	1.82	0.62
1:C:217:THR:C	1:C:218:ILE:HG23	2.19	0.62
1:A:116:LEU:HD11	3:A:268:BOG:H8'2	1.82	0.61
1:C:259:ALA:C	1:C:261:ALA:N	2.53	0.61
1:D:221:VAL:O	1:D:222:THR:OG1	2.14	0.61
1:C:151:MET:HG3	1:C:152:PRO:HD2	1.82	0.61
1:E:106:LYS:NZ	3:E:267:BOG:H61	2.16	0.60
1:C:148:LYS:HZ1	2:C:266:PG4:H32	1.65	0.60
1:A:155:ALA:O	1:A:159:ARG:HG3	2.01	0.60
1:E:110:TYR:CZ	3:E:267:BOG:H3'1	2.37	0.60
1:C:256:LYS:HZ2	1:C:264:LEU:HD21	1.67	0.60
1:C:148:LYS:NZ	2:C:266:PG4:H32	2.17	0.59
1:D:0:ARG:O	4:D:316:HOH:O	2.16	0.59
1:E:155:ALA:O	1:E:159:ARG:HG3	2.03	0.59
1:B:158:PHE:HD1	1:E:125:ILE:HG23	1.66	0.59
1:C:250:TYR:CE1	1:C:254:LYS:HD3	2.37	0.59
1:C:109:ALA:O	1:C:113:VAL:HG23	2.03	0.59
1:A:151:MET:HG3	1:A:152:PRO:HD2	1.85	0.58
1:A:133:ASP:O	1:A:217:THR:HG21	2.03	0.58
1:B:42:ILE:HD11	1:B:204:ALA:HB1	1.85	0.58
1:D:217:THR:CG2	1:D:217:THR:O	2.52	0.58
1:B:194:PHE:CD1	1:B:194:PHE:C	2.77	0.58
1:E:106:LYS:NZ	3:E:267:BOG:C6	2.67	0.58
1:C:3:LYS:NZ	4:C:310:HOH:O	2.38	0.57
1:E:106:LYS:HZ3	3:E:267:BOG:C6	2.16	0.57
1:D:194:PHE:CD1	1:D:194:PHE:C	2.78	0.57
1:A:0:ARG:NH2	1:A:0:ARG:O	2.37	0.57
1:C:221:VAL:O	1:C:222:THR:CB	2.52	0.57
1:E:61:LYS:CE	2:E:268:PG4:H22	2.35	0.57
1:C:258:ASN:N	1:C:259:ALA:CB	2.50	0.56
1:A:158:PHE:HD1	1:B:125:ILE:HG23	1.71	0.56
1:C:223:ILE:CG2	1:C:227:ILE:CD1	2.68	0.56
2:C:266:PG4:O5	4:C:303:HOH:O	2.18	0.56
1:D:0:ARG:H1	1:D:0:ARG:HD3	1.71	0.56
1:B:61:LYS:HD3	2:B:266:PG4:C2	2.36	0.56
1:E:194:PHE:CD1	1:E:194:PHE:C	2.80	0.55
1:B:87:ASN:O	1:B:91:SER:HB3	2.05	0.55
1:A:209:TYR:HE1	1:A:221:VAL:HG21	1.71	0.55
1:E:216:PRO:HD2	4:E:334:HOH:O	2.06	0.55
1:B:116:LEU:HD11	3:B:267:BOG:H8'3	1.88	0.55

Continued on next page...

Continued from previous page...

Atom-1	Atom-2	Interatomic distance (Å)	Clash overlap (Å)
1:A:79:GLY:O	1:D:0:ARG:HD2	2.07	0.55
1:E:216:PRO:HB2	4:E:302:HOH:O	2.06	0.55
1:E:94:MET:SD	1:E:101:ILE:HG13	2.48	0.54
1:B:223:ILE:HG22	1:B:227:ILE:CD1	2.38	0.54
1:B:61:LYS:CD	2:B:266:PG4:H21	2.36	0.54
1:E:215:SER:HB2	4:E:334:HOH:O	2.07	0.54
1:E:219:SER:OG	1:E:221:VAL:HG23	2.08	0.53
1:C:222:THR:HG23	1:C:224:GLY:H	1.74	0.53
1:C:222:THR:HG23	1:C:224:GLY:N	2.22	0.53
1:C:255:GLU:HG2	1:C:255:GLU:O	2.08	0.53
1:C:148:LYS:HZ1	2:C:266:PG4:H21	1.73	0.53
1:A:26:LYS:HE2	1:D:251:ILE:O	2.09	0.53
1:B:76:ILE:HG13	1:B:187:ILE:CD1	2.36	0.52
1:C:194:PHE:C	1:C:194:PHE:CD1	2.82	0.52
1:B:117:ILE:O	1:B:121:VAL:HG23	2.09	0.52
1:B:181:THR:HG21	3:B:269:BOG:C3'	2.38	0.52
1:E:106:LYS:CE	3:E:267:BOG:H61	2.39	0.52
1:C:0:ARG:CB	1:C:1:ALA:CA	2.64	0.52
1:D:131:LEU:O	4:D:287:HOH:O	2.19	0.52
1:E:96:ASN:ND2	4:E:328:HOH:O	2.41	0.52
1:C:264:LEU:O	1:C:265:TYR:CB	2.51	0.51
1:C:101:ILE:H	1:C:101:ILE:CD1	2.21	0.51
1:A:181:THR:HG21	3:B:269:BOG:H1'1	1.92	0.51
1:E:220:THR:CG2	1:E:220:THR:O	2.58	0.51
1:A:116:LEU:CD1	3:A:268:BOG:C8'	2.89	0.51
1:C:256:LYS:HZ3	1:C:264:LEU:HD21	1.74	0.51
1:E:106:LYS:HE2	3:E:267:BOG:H61	1.92	0.51
1:B:133:ASP:O	1:B:134:LYS:HD3	2.11	0.51
1:A:194:PHE:C	1:A:194:PHE:CD1	2.84	0.50
1:D:133:ASP:O	1:D:134:LYS:CG	2.58	0.50
1:D:221:VAL:O	1:D:222:THR:CB	2.59	0.50
1:D:148:LYS:HE3	2:D:266:PG4:H81	1.94	0.50
1:C:264:LEU:HD11	1:D:26:LYS:CE	2.42	0.50
1:C:0:ARG:NH2	1:C:3:LYS:HB3	2.27	0.49
1:D:219:SER:OG	1:D:220:THR:N	2.45	0.49
1:E:218:ILE:HD12	1:E:218:ILE:N	2.26	0.49
1:C:40:ILE:HG21	1:E:166:LEU:HD21	1.93	0.49
1:E:256:LYS:HB2	1:E:256:LYS:HZ2	1.76	0.49
1:B:219:SER:HA	4:B:294:HOH:O	2.11	0.49
1:E:124:ILE:HG13	1:E:214:PHE:CE2	2.47	0.49
1:B:120:LEU:HD21	3:B:267:BOG:H6'1	1.94	0.49

Continued on next page...

Continued from previous page...

Atom-1	Atom-2	Interatomic distance (Å)	Clash overlap (Å)
1:C:222:THR:HG22	1:C:225:GLY:H	1.78	0.49
1:A:76:ILE:HG13	1:A:187:ILE:HD11	1.95	0.48
1:C:211:VAL:O	1:C:215:SER:HB2	2.12	0.48
1:E:221:VAL:O	1:E:222:THR:OG1	2.20	0.48
1:B:91:SER:OG	1:B:246:GLY:HA3	2.13	0.48
1:C:125:ILE:HG23	1:E:158:PHE:HD1	1.79	0.48
1:C:256:LYS:CE	1:C:264:LEU:CD2	2.92	0.48
1:C:258:ASN:CA	1:C:260:ALA:N	2.39	0.48
1:A:255:GLU:O	1:A:255:GLU:CG	2.59	0.48
1:A:116:LEU:HD11	3:A:268:BOG:C8'	2.42	0.48
1:D:174:SER:HA	1:D:183:LYS:HG2	1.96	0.48
1:C:256:LYS:HD3	1:C:264:LEU:CD1	2.36	0.47
1:C:193:ALA:HA	1:D:44:LEU:HD13	1.96	0.47
1:B:223:ILE:HG22	1:B:227:ILE:HD12	1.97	0.47
1:C:257:LEU:O	1:C:258:ASN:HB3	2.13	0.47
1:B:0:ARG:HG3	1:E:79:GLY:O	2.14	0.47
1:E:106:LYS:HZ3	3:E:267:BOG:H61	1.75	0.47
1:E:174:SER:HA	1:E:183:LYS:HG2	1.97	0.47
1:C:91:SER:OG	1:C:246:GLY:HA3	2.15	0.47
1:A:20:LEU:HD21	1:A:106:LYS:HG2	1.97	0.47
1:D:151:MET:HG3	1:D:152:PRO:CD	2.42	0.47
1:B:146:ALA:HA	1:B:221:VAL:HG12	1.96	0.46
1:B:25:VAL:O	1:B:29:VAL:HG23	2.15	0.46
1:C:206:MET:O	1:C:210:SER:HB2	2.15	0.46
3:B:267:BOG:H61	4:B:340:HOH:O	2.15	0.46
1:E:72:LEU:O	1:E:76:ILE:HG12	2.16	0.45
1:A:61:LYS:HD3	2:A:266:PG4:H21	1.98	0.45
1:D:134:LYS:HD3	1:D:217:THR:OG1	2.16	0.45
1:D:42:ILE:HD11	1:D:204:ALA:HB1	1.99	0.45
1:D:27:TYR:OH	1:D:107:ILE:HG23	2.15	0.45
1:D:10:THR:O	1:D:14:ILE:HG13	2.17	0.45
1:C:256:LYS:CG	1:C:264:LEU:CD1	2.95	0.45
1:D:221:VAL:O	1:D:222:THR:HG23	2.16	0.45
1:C:31:SER:HB2	1:C:114:GLY:HA3	1.98	0.45
1:D:255:GLU:HA	1:D:255:GLU:OE1	2.16	0.45
1:C:256:LYS:HG2	1:C:264:LEU:CD1	2.43	0.45
1:C:217:THR:C	1:C:218:ILE:CG2	2.85	0.45
1:A:217:THR:O	1:A:217:THR:HG22	2.16	0.45
1:E:166:LEU:O	1:E:169:VAL:HG12	2.16	0.45
1:C:179:SER:O	1:C:183:LYS:HG3	2.16	0.45
1:A:101:ILE:N	1:A:101:ILE:HD12	2.29	0.45

Continued on next page...

Continued from previous page...

Atom-1	Atom-2	Interatomic distance (Å)	Clash overlap (Å)
1:C:256:LYS:CD	1:C:264:LEU:HG	2.45	0.45
1:D:155:ALA:O	1:D:159:ARG:HG3	2.17	0.45
1:A:0:ARG:NH2	4:A:320:HOH:O	2.36	0.44
1:B:94:MET:HE2	1:B:95:LEU:N	2.32	0.44
1:A:166:LEU:HD21	1:B:40:ILE:HG21	1.99	0.44
1:C:25:VAL:O	1:C:29:VAL:HG23	2.16	0.44
1:A:116:LEU:CD1	3:A:268:BOG:H8'2	2.47	0.44
1:C:163:CYS:SG	1:C:201:HIS:HB2	2.57	0.44
1:C:31:SER:CB	1:C:114:GLY:HA3	2.47	0.44
1:C:240:GLY:O	1:C:244:PHE:HB2	2.18	0.44
1:D:254:LYS:HD2	1:D:255:GLU:N	2.32	0.44
1:C:264:LEU:HD11	1:D:26:LYS:HE2	1.99	0.44
1:E:135:GLY:O	1:E:139:GLU:HG3	2.18	0.43
1:A:83:PHE:O	1:A:86:ASN:HB2	2.18	0.43
1:C:155:ALA:O	1:C:159:ARG:HG3	2.18	0.43
1:B:158:PHE:CD1	1:E:125:ILE:HG23	2.52	0.43
1:C:87:ASN:O	1:C:91:SER:HB3	2.18	0.43
1:A:215:SER:HA	1:A:216:PRO:HD3	1.91	0.43
1:C:42:ILE:O	1:C:46:PHE:HB2	2.19	0.43
1:A:109:ALA:O	1:A:113:VAL:HG23	2.18	0.43
1:E:83:PHE:O	1:E:86:ASN:HB2	2.18	0.43
1:C:26:LYS:HE2	1:E:251:ILE:O	2.18	0.43
1:C:250:TYR:OH	1:C:254:LYS:HE2	2.19	0.43
1:D:42:ILE:O	1:D:46:PHE:HB2	2.19	0.43
1:A:201:HIS:CE1	1:A:203:VAL:HB	2.53	0.43
1:E:210:SER:O	1:E:214:PHE:HB2	2.19	0.43
1:D:31:SER:CB	1:D:114:GLY:HA3	2.49	0.42
1:B:61:LYS:CE	2:B:266:PG4:H21	2.49	0.42
1:C:256:LYS:HE2	1:C:264:LEU:CD2	2.50	0.42
1:B:223:ILE:HG22	1:B:227:ILE:HD11	2.01	0.42
1:C:217:THR:O	1:C:218:ILE:HG23	2.19	0.42
1:C:129:THR:HB	1:E:159:ARG:HG2	2.00	0.42
1:B:256:LYS:HE2	1:B:256:LYS:HB3	1.86	0.42
1:C:27:TYR:OH	1:C:107:ILE:HG23	2.20	0.42
1:C:36:LEU:HD23	1:C:36:LEU:O	2.19	0.42
1:C:239:VAL:O	1:C:243:LEU:HB3	2.20	0.42
1:A:240:GLY:O	1:A:244:PHE:HB2	2.19	0.41
1:E:61:LYS:HD3	2:E:268:PG4:H22	2.01	0.41
1:C:256:LYS:CD	1:C:264:LEU:CG	2.98	0.41
1:D:0:ARG:N	1:D:0:ARG:HD3	2.33	0.41
1:D:110:TYR:CE1	3:D:267:BOG:H2'1	2.54	0.41

Continued on next page...

Continued from previous page...

Atom-1	Atom-2	Interatomic distance (Å)	Clash overlap (Å)
1:E:219:SER:OG	1:E:220:THR:N	2.53	0.41
1:C:222:THR:CG2	1:C:225:GLY:H	2.33	0.41
1:E:133:ASP:O	1:E:134:LYS:HD3	2.20	0.41
1:C:256:LYS:O	1:C:259:ALA:CB	2.67	0.41
1:B:94:MET:C	1:B:94:MET:CE	2.89	0.41
1:A:91:SER:OG	1:A:246:GLY:HA3	2.20	0.41
1:C:120:LEU:O	1:C:124:ILE:HG13	2.21	0.41
1:C:61:LYS:CD	2:C:266:PG4:H72	2.50	0.41
1:E:110:TYR:CE1	3:E:267:BOG:H3'1	2.56	0.41
1:A:133:ASP:O	1:A:217:THR:CG2	2.67	0.41
1:C:258:ASN:OD1	1:C:260:ALA:HB3	2.21	0.41
1:C:3:LYS:HD2	1:C:3:LYS:O	2.20	0.41
1:B:42:ILE:O	1:B:46:PHE:HB2	2.21	0.41
1:C:36:LEU:C	1:C:36:LEU:HD23	2.41	0.41
1:B:146:ALA:HA	1:B:221:VAL:CG1	2.50	0.40
1:B:201:HIS:CE1	1:B:203:VAL:HB	2.56	0.40
1:D:154:THR:HG23	1:D:158:PHE:HE2	1.86	0.40
1:C:0:ARG:CG	1:C:2:HIS:H	2.32	0.40
1:E:25:VAL:O	1:E:29:VAL:HG23	2.21	0.40
1:B:110:TYR:CE1	3:B:268:BOG:H3'1	2.57	0.40
1:D:113:VAL:O	1:D:117:ILE:HG13	2.21	0.40
1:D:223:ILE:HG23	1:D:224:GLY:N	2.37	0.40

There are no symmetry-related clashes.

5.3 Torsion angles ⓘ

5.3.1 Protein backbone ⓘ

In the following table, the Percentiles column shows the percent Ramachandran outliers of the chain as a percentile score with respect to all X-ray entries followed by that with respect to entries of similar resolution.

The Analysed column shows the number of residues for which the backbone conformation was analysed, and the total number of residues.

Mol	Chain	Analysed	Favoured	Allowed	Outliers	Percentiles	
1	A	255/268 (95%)	246 (96%)	8 (3%)	1 (0%)	39	48
1	B	255/268 (95%)	253 (99%)	2 (1%)	0	100	100
1	C	264/268 (98%)	248 (94%)	7 (3%)	9 (3%)	5	2

Continued on next page...

Continued from previous page...

Mol	Chain	Analysed	Favoured	Allowed	Outliers	Percentiles	
1	D	255/268 (95%)	246 (96%)	6 (2%)	3 (1%)	16	16
1	E	254/268 (95%)	251 (99%)	3 (1%)	0	100	100
All	All	1283/1340 (96%)	1244 (97%)	26 (2%)	13 (1%)	19	21

All (13) Ramachandran outliers are listed below:

Mol	Chain	Res	Type
1	C	218	ILE
1	C	222	THR
1	C	258	ASN
1	C	217	THR
1	C	260	ALA
1	C	261	ALA
1	C	216	PRO
1	C	264	LEU
1	D	217	THR
1	D	222	THR
1	A	222	THR
1	C	221	VAL
1	D	218	ILE

5.3.2 Protein sidechains ⓘ

In the following table, the Percentiles column shows the percent sidechain outliers of the chain as a percentile score with respect to all X-ray entries followed by that with respect to entries of similar resolution.

The Analysed column shows the number of residues for which the sidechain conformation was analysed, and the total number of residues.

Mol	Chain	Analysed	Rotameric	Outliers	Percentiles	
1	A	206/214 (96%)	199 (97%)	7 (3%)	44	59
1	B	207/214 (97%)	201 (97%)	6 (3%)	50	66
1	C	213/214 (100%)	203 (95%)	10 (5%)	32	43
1	D	207/214 (97%)	202 (98%)	5 (2%)	57	74
1	E	206/214 (96%)	202 (98%)	4 (2%)	65	81
All	All	1039/1070 (97%)	1007 (97%)	32 (3%)	47	64

All (32) residues with a non-rotameric sidechain are listed below:

Mol	Chain	Res	Type
1	A	0	ARG
1	A	102	LYS
1	A	194	PHE
1	A	220	THR
1	A	221	VAL
1	A	243	LEU
1	A	255	GLU
1	B	0	ARG
1	B	91	SER
1	B	94	MET
1	B	134	LYS
1	B	194	PHE
1	B	223	ILE
1	C	91	SER
1	C	105	SER
1	C	194	PHE
1	C	217	THR
1	C	218	ILE
1	C	220	THR
1	C	222	THR
1	C	223	ILE
1	C	256	LYS
1	C	262	GLU
1	D	94	MET
1	D	102	LYS
1	D	194	PHE
1	D	221	VAL
1	D	243	LEU
1	E	94	MET
1	E	102	LYS
1	E	194	PHE
1	E	220	THR

Some sidechains can be flipped to improve hydrogen bonding and reduce clashes. All (1) such sidechains are listed below:

Mol	Chain	Res	Type
1	C	2	HIS

5.3.3 RNA ⓘ

There are no RNA molecules in this entry.

5.4 Non-standard residues in protein, DNA, RNA chains [i](#)

There are no non-standard protein/DNA/RNA residues in this entry.

5.5 Carbohydrates [i](#)

There are no carbohydrates in this entry.

5.6 Ligand geometry [i](#)

12 ligands are modelled in this entry.

In the following table, the Counts columns list the number of bonds (or angles) for which Mogul statistics could be retrieved, the number of bonds (or angles) that are observed in the model and the number of bonds (or angles) that are defined in the chemical component dictionary. The Link column lists molecule types, if any, to which the group is linked. The Z score for a bond length (or angle) is the number of standard deviations the observed value is removed from the expected value. A bond length (or angle) with $|Z| > 2$ is considered an outlier worth inspection. RMSZ is the root-mean-square of all Z scores of the bond lengths (or angles).

Mol	Type	Chain	Res	Link	Bond lengths			Bond angles		
					Counts	RMSZ	$\# Z > 2$	Counts	RMSZ	$\# Z > 2$
2	PG4	A	266	-	12,12,12	1.06	0	11,11,11	1.03	1 (9%)
3	BOG	A	267	-	20,20,20	0.45	0	25,25,25	0.62	0
3	BOG	A	268	-	20,20,20	0.45	0	25,25,25	0.65	0
2	PG4	B	266	-	12,12,12	1.04	0	11,11,11	0.84	0
3	BOG	B	267	-	20,20,20	0.45	0	25,25,25	0.65	0
3	BOG	B	268	-	20,20,20	0.45	0	25,25,25	0.60	0
3	BOG	B	269	-	20,20,20	0.44	0	25,25,25	0.64	0
2	PG4	C	266	-	12,12,12	1.05	0	11,11,11	0.94	1 (9%)
2	PG4	D	266	-	12,12,12	1.07	0	11,11,11	0.98	1 (9%)
3	BOG	D	267	-	20,20,20	0.44	0	25,25,25	0.62	0
3	BOG	E	267	-	20,20,20	0.44	0	25,25,25	0.64	0
2	PG4	E	268	-	12,12,12	1.07	0	11,11,11	1.04	1 (9%)

In the following table, the Chirals column lists the number of chiral outliers, the number of chiral centers analysed, the number of these observed in the model and the number defined in the chemical component dictionary. Similar counts are reported in the Torsion and Rings columns. '-' means no outliers of that kind were identified.

Mol	Type	Chain	Res	Link	Chirals	Torsions	Rings
2	PG4	A	266	-	-	0/10/10/10	0/0/0/0
3	BOG	A	267	-	-	0/11/31/31	0/1/1/1

Continued on next page...

Continued from previous page...

Mol	Type	Chain	Res	Link	Chirals	Torsions	Rings
3	BOG	A	268	-	-	0/11/31/31	0/1/1/1
2	PG4	B	266	-	-	0/10/10/10	0/0/0/0
3	BOG	B	267	-	-	0/11/31/31	0/1/1/1
3	BOG	B	268	-	-	0/11/31/31	0/1/1/1
3	BOG	B	269	-	-	0/11/31/31	0/1/1/1
2	PG4	C	266	-	-	0/10/10/10	0/0/0/0
2	PG4	D	266	-	-	0/10/10/10	0/0/0/0
3	BOG	D	267	-	-	0/11/31/31	0/1/1/1
3	BOG	E	267	-	-	0/11/31/31	0/1/1/1
2	PG4	E	268	-	-	0/10/10/10	0/0/0/0

There are no bond length outliers.

All (4) bond angle outliers are listed below:

Mol	Chain	Res	Type	Atoms	Z	Observed(°)	Ideal(°)
2	E	268	PG4	C5-O3-C4	2.03	122.04	113.31
2	D	266	PG4	C7-O4-C6	2.07	122.19	113.31
2	A	266	PG4	C7-O4-C6	2.18	122.69	113.31
2	C	266	PG4	C5-O3-C4	2.25	122.99	113.31

There are no chirality outliers.

There are no torsion outliers.

There are no ring outliers.

11 monomers are involved in 39 short contacts:

Mol	Chain	Res	Type	Clashes	Symm-Clashes
2	A	266	PG4	1	0
3	A	268	BOG	4	0
2	B	266	PG4	4	0
3	B	267	BOG	3	0
3	B	268	BOG	1	0
3	B	269	BOG	8	0
2	C	266	PG4	6	0
2	D	266	PG4	1	0
3	D	267	BOG	1	0
3	E	267	BOG	8	0
2	E	268	PG4	2	0

5.7 Other polymers

There are no such residues in this entry.

5.8 Polymer linkage issues

There are no chain breaks in this entry.

6 Fit of model and data

6.1 Protein, DNA and RNA chains

In the following table, the column labelled ‘#RSRZ> 2’ contains the number (and percentage) of RSRZ outliers, followed by percent RSRZ outliers for the chain as percentile scores relative to all X-ray entries and entries of similar resolution. The OWAB column contains the minimum, median, 95th percentile and maximum values of the occupancy-weighted average B-factor per residue. The column labelled ‘Q< 0.9’ lists the number of (and percentage) of residues with an average occupancy less than 0.9.

Mol	Chain	Analysed	<RSRZ>	#RSRZ>2	OWAB(Å ²)	Q<0.9
1	A	257/268 (95%)	-0.08	11 (4%) 39 48	21, 36, 61, 111	0
1	B	257/268 (95%)	-0.01	7 (2%) 58 67	20, 36, 59, 91	0
1	C	266/268 (99%)	0.45	26 (9%) 10 14	24, 50, 84, 140	0
1	D	257/268 (95%)	-0.08	5 (1%) 70 76	20, 38, 66, 104	0
1	E	256/268 (95%)	-0.09	5 (1%) 68 75	22, 38, 62, 103	0
All	All	1293/1340 (96%)	0.04	54 (4%) 40 49	20, 39, 71, 140	0

All (54) RSRZ outliers are listed below:

Mol	Chain	Res	Type	RSRZ
1	D	218	ILE	5.6
1	C	265	TYR	5.2
1	C	219	SER	4.3
1	A	102	LYS	4.2
1	C	257	LEU	3.9
1	C	264	LEU	3.9
1	C	224	GLY	3.9
1	C	218	ILE	3.8
1	B	227	ILE	3.8
1	B	25	VAL	3.7
1	C	220	THR	3.7
1	C	263	ASN	3.6
1	E	216	PRO	3.6
1	A	22	THR	3.5
1	C	258	ASN	3.3
1	B	223	ILE	3.3
1	C	260	ALA	3.2
1	C	153	PHE	3.1
1	C	223	ILE	3.0
1	C	22	THR	3.0

Continued on next page...

Continued from previous page...

Mol	Chain	Res	Type	RSRZ
1	A	101	ILE	2.8
1	E	255	GLU	2.8
1	C	256	LYS	2.7
1	C	154	THR	2.7
1	C	19	LEU	2.7
1	C	38	VAL	2.7
1	C	10	THR	2.6
1	E	256	LYS	2.6
1	D	256	LYS	2.6
1	A	254	LYS	2.5
1	A	56	GLY	2.5
1	C	84	THR	2.5
1	C	163	CYS	2.5
1	A	17	ILE	2.4
1	A	154	THR	2.4
1	C	101	ILE	2.4
1	C	14	ILE	2.4
1	E	166	LEU	2.3
1	A	100	SER	2.3
1	B	221	VAL	2.3
1	C	15	ASN	2.3
1	D	169	VAL	2.2
1	D	22	THR	2.2
1	C	102	LYS	2.2
1	B	82	LEU	2.2
1	B	101	ILE	2.1
1	A	21	ASN	2.1
1	D	74	LEU	2.1
1	C	110	TYR	2.1
1	B	84	THR	2.1
1	E	221	VAL	2.1
1	A	221	VAL	2.1
1	C	0	ARG	2.0
1	A	203	VAL	2.0

6.2 Non-standard residues in protein, DNA, RNA chains ⓘ

There are no non-standard protein/DNA/RNA residues in this entry.

6.3 Carbohydrates [i](#)

There are no carbohydrates in this entry.

6.4 Ligands [i](#)

In the following table, the Atoms column lists the number of modelled atoms in the group and the number defined in the chemical component dictionary. LLDF column lists the quality of electron density of the group with respect to its neighbouring residues in protein, DNA or RNA chains. The B-factors column lists the minimum, median, 95th percentile and maximum values of B factors of atoms in the group. The column labelled 'Q< 0.9' lists the number of atoms with occupancy less than 0.9.

Mol	Type	Chain	Res	Atoms	RSCC	RSR	LLDF	B-factors(\AA^2)	Q<0.9
3	BOG	A	268	20/20	0.73	0.57	16.15	10,10,10,10	0
3	BOG	B	269	20/20	0.61	0.52	12.50	10,10,10,10	0
3	BOG	D	267	20/20	0.69	0.67	10.16	10,10,10,10	0
3	BOG	E	267	20/20	0.69	0.56	8.45	10,10,10,10	0
3	BOG	B	267	20/20	0.66	0.65	7.75	10,10,10,10	0
3	BOG	B	268	20/20	0.80	0.58	7.33	10,10,10,10	0
3	BOG	A	267	20/20	0.84	0.59	3.38	10,10,10,10	0
2	PG4	E	268	13/13	0.81	0.23	3.08	50,68,100,110	0
2	PG4	A	266	13/13	0.88	0.17	2.23	32,49,126,127	0
2	PG4	B	266	13/13	0.85	0.18	1.91	41,52,135,139	0
2	PG4	C	266	13/13	0.82	0.20	1.15	40,69,96,102	0
2	PG4	D	266	13/13	0.86	0.15	0.68	31,57,87,96	0

6.5 Other polymers [i](#)

There are no such residues in this entry.