



Full wwPDB X-ray Structure Validation Report ⓘ

Jan 31, 2016 – 10:24 PM GMT

PDB ID : 1THA
Title : MECHANISM OF MOLECULAR RECOGNITION. STRUCTURAL ASPECTS OF 3,3'-DIODO-L-THYRONINE BINDING TO HUMAN SERUM TRANSTHYRETIN
Authors : Wojtczak, A.; Luft, J.; Cody, V.
Deposited on : 1991-11-21
Resolution : 2.00 Å(reported)

This is a Full wwPDB X-ray Structure Validation Report for a publicly released PDB entry.
We welcome your comments at validation@mail.wwpdb.org
A user guide is available at
<http://wwpdb.org/validation/2016/XrayValidationReportHelp>
with specific help available everywhere you see the ⓘ symbol.

The following versions of software and data (see [references ⓘ](#)) were used in the production of this report:

MolProbity : 4.02b-467
Mogul : 1.7 (RC4), CSD as536be (2015)
Xtriage (Phenix) : **NOT EXECUTED**
EDS : **NOT EXECUTED**
Percentile statistics : 20151230.v01 (using entries in the PDB archive December 30th 2015)
Ideal geometry (proteins) : Engh & Huber (2001)
Ideal geometry (DNA, RNA) : Parkinson et al. (1996)
Validation Pipeline (wwPDB-VP) : trunk26865

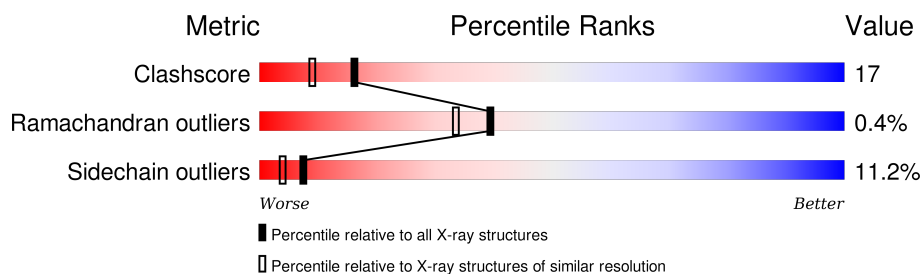
1 Overall quality at a glance

The following experimental techniques were used to determine the structure:

X-RAY DIFFRACTION

The reported resolution of this entry is 2.00 Å.

Percentile scores (ranging between 0-100) for global validation metrics of the entry are shown in the following graphic. The table shows the number of entries on which the scores are based.



Metric	Whole archive (#Entries)	Similar resolution (#Entries, resolution range(Å))
Clashscore	102246	7340 (2.00-2.00)
Ramachandran outliers	100387	7248 (2.00-2.00)
Sidechain outliers	100360	7247 (2.00-2.00)

The table below summarises the geometric issues observed across the polymeric chains and their fit to the electron density. The red, orange, yellow and green segments on the lower bar indicate the fraction of residues that contain outliers for ≥ 3 , 2, 1 and 0 types of geometric quality criteria. A grey segment represents the fraction of residues that are not modelled. The numeric value for each fraction is indicated below the corresponding segment, with a dot representing fractions $\leq 5\%$. The upper red bar (where present) indicates the fraction of residues that have poor fit to the electron density. The numeric value is given above the bar.

Note EDS was not executed.

Mol	Chain	Length	Quality of chain
1	A	127	
1	B	127	

2 Entry composition [i](#)

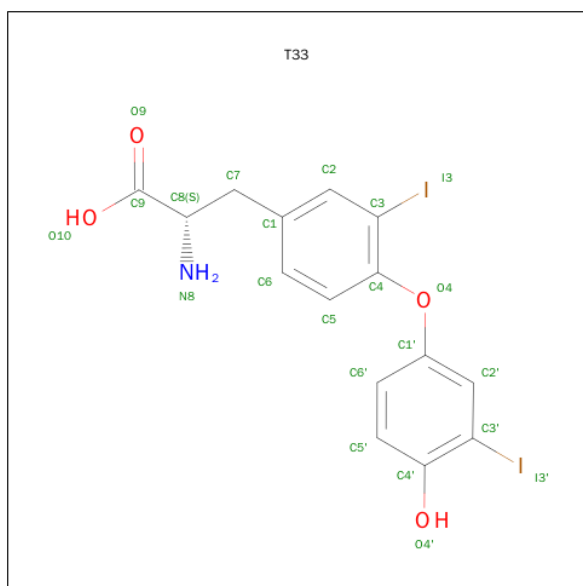
There are 3 unique types of molecules in this entry. The entry contains 1970 atoms, of which 0 are hydrogens and 0 are deuteriums.

In the tables below, the ZeroOcc column contains the number of atoms modelled with zero occupancy, the AltConf column contains the number of residues with at least one atom in alternate conformation and the Trace column contains the number of residues modelled with at most 2 atoms.

- Molecule 1 is a protein called TRANSTHYRETIN.

Mol	Chain	Residues	Atoms					ZeroOcc	AltConf	Trace
1	A	118	Total	C	N	O	S	0	3	0
			925	589	155	178	3			
1	B	116	Total	C	N	O	S	0	2	0
			903	577	148	175	3			

- Molecule 2 is 3,3'-DEIODO-THYROXINE (three-letter code: T33) (formula: $C_{15}H_{13}I_2NO_4$).



Mol	Chain	Residues	Atoms					ZeroOcc	AltConf
2	A	1	Total	C	I	N	O	0	0
			22	15	2	1	4		
2	B	1	Total	C	I	N	O	0	0
			22	15	2	1	4		

- Molecule 3 is water.

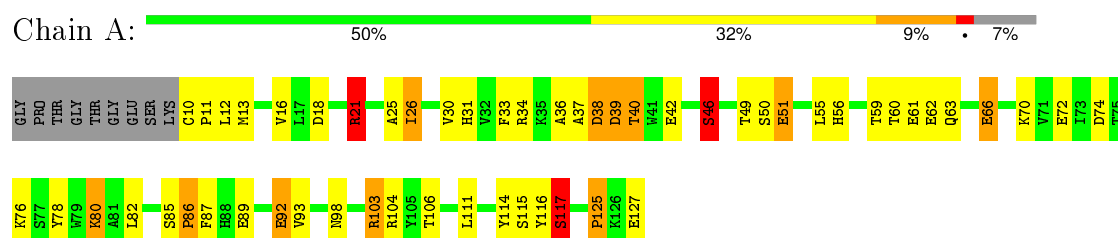
Mol	Chain	Residues	Atoms		ZeroOcc	AltConf
3	A	50	Total 50	O 50	0	0
3	B	48	Total 48	O 48	0	0

3 Residue-property plots

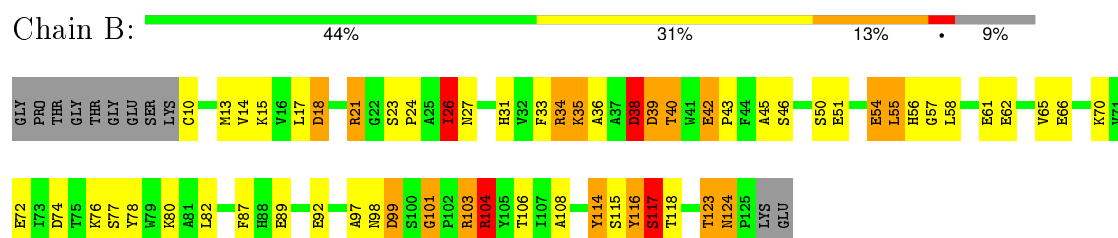
These plots are drawn for all protein, RNA and DNA chains in the entry. The first graphic for a chain summarises the proportions of errors displayed in the second graphic. The second graphic shows the sequence view annotated by issues in geometry and electron density. Residues are color-coded according to the number of geometric quality criteria for which they contain at least one outlier: green = 0, yellow = 1, orange = 2 and red = 3 or more. A red dot above a residue indicates a poor fit to the electron density ($RSRZ > 2$). Stretches of 2 or more consecutive residues without any outlier are shown as a green connector. Residues present in the sample, but not in the model, are shown in grey.

Note EDS was not executed.

• Molecule 1: TRANSTHYRETIN



• Molecule 1: TRANSTHYRETIN



4 Data and refinement statistics

Xtriage (Phenix) and EDS were not executed - this section will therefore be incomplete.

Property	Value	Source
Space group	P 21 21 2	Depositor
Cell constants a, b, c, α , β , γ	43.93Å 86.65Å 65.64Å 90.00° 90.00° 90.00°	Depositor
Resolution (Å)	8.00 – 2.00	Depositor
% Data completeness (in resolution range)	(Not available) (8.00-2.00)	Depositor
R_{merge}	(Not available)	Depositor
R_{sym}	(Not available)	Depositor
Refinement program	CORELS, PROLSQ	Depositor
R, R_{free}	0.185 , (Not available)	Depositor
Estimated twinning fraction	No twinning to report.	Xtriage
Total number of atoms	1970	wwPDB-VP
Average B, all atoms (Å ²)	23.0	wwPDB-VP

5 Model quality ⓘ

5.1 Standard geometry ⓘ

Bond lengths and bond angles in the following residue types are not validated in this section: T33

The Z score for a bond length (or angle) is the number of standard deviations the observed value is removed from the expected value. A bond length (or angle) with $|Z| > 5$ is considered an outlier worth inspection. RMSZ is the root-mean-square of all Z scores of the bond lengths (or angles).

Mol	Chain	Bond lengths		Bond angles	
		RMSZ	$\# Z > 5$	RMSZ	$\# Z > 5$
1	A	1.24	3/966 (0.3%)	2.41	61/1315 (4.6%)
1	B	1.13	1/937 (0.1%)	4.78	49/1278 (3.8%)
All	All	1.19	4/1903 (0.2%)	3.77	110/2593 (4.2%)

All (4) bond length outliers are listed below:

Mol	Chain	Res	Type	Atoms	Z	Observed(Å)	Ideal(Å)
1	A	46	SER	CA-CB	6.24	1.62	1.52
1	A	117	SER	CB-OG	-6.16	1.34	1.42
1	A	89	GLU	CD-OE1	-5.45	1.19	1.25
1	B	89	GLU	CD-OE1	-5.38	1.19	1.25

All (110) bond angle outliers are listed below:

Mol	Chain	Res	Type	Atoms	Z	Observed(°)	Ideal(°)
1	B	62[A]	GLU	OE1-CD-OE2	-102.75	0.00	123.30
1	B	62[B]	GLU	OE1-CD-OE2	-102.75	0.00	123.30
1	B	21	ARG	CD-NE-CZ	26.92	161.28	123.60
1	B	104	ARG	NE-CZ-NH2	-16.69	111.96	120.30
1	B	104	ARG	NE-CZ-NH1	16.59	128.60	120.30
1	B	116	TYR	CB-CG-CD2	13.66	129.19	121.00
1	A	74	ASP	CB-CG-OD1	13.27	130.24	118.30
1	A	74	ASP	CB-CG-OD2	-12.35	107.18	118.30
1	B	61	GLU	CA-CB-CG	11.78	139.32	113.40
1	B	21	ARG	NE-CZ-NH2	11.72	126.16	120.30
1	B	116	TYR	CB-CG-CD1	-11.72	113.97	121.00
1	A	34[A]	ARG	NE-CZ-NH1	10.84	125.72	120.30
1	A	34[B]	ARG	NE-CZ-NH1	10.84	125.72	120.30
1	A	21	ARG	NE-CZ-NH2	10.70	125.65	120.30
1	A	72	GLU	OE1-CD-OE2	9.99	135.29	123.30

Continued on next page...

Continued from previous page...

Mol	Chain	Res	Type	Atoms	Z	Observed(°)	Ideal(°)
1	A	78	TYR	CB-CG-CD1	-9.96	115.02	121.00
1	B	34	ARG	NE-CZ-NH1	9.96	125.28	120.30
1	B	103	ARG	NE-CZ-NH2	-9.64	115.48	120.30
1	A	103	ARG	CD-NE-CZ	-9.36	110.50	123.60
1	A	92	GLU	CA-CB-CG	9.23	133.72	113.40
1	A	66	GLU	CA-CB-CG	9.16	133.54	113.40
1	B	72	GLU	OE1-CD-OE2	9.04	134.14	123.30
1	B	72	GLU	CG-CD-OE2	-9.03	100.24	118.30
1	A	39	ASP	CB-CG-OD2	-8.93	110.27	118.30
1	A	117	SER	CB-CA-C	8.80	126.83	110.10
1	B	74	ASP	CB-CG-OD1	8.53	125.98	118.30
1	A	116	TYR	CB-CG-CD2	-8.49	115.91	121.00
1	A	18	ASP	CB-CG-OD2	-8.46	110.68	118.30
1	B	104	ARG	N-CA-CB	8.21	125.38	110.60
1	A	104	ARG	CD-NE-CZ	-8.09	112.28	123.60
1	B	117	SER	CB-CA-C	8.08	125.45	110.10
1	B	46	SER	N-CA-CB	-7.99	98.51	110.50
1	A	66	GLU	CG-CD-OE2	-7.88	102.53	118.30
1	B	115	SER	N-CA-CB	-7.34	99.49	110.50
1	A	116	TYR	CB-CG-CD1	7.29	125.37	121.00
1	B	21	ARG	NH1-CZ-NH2	-7.22	111.45	119.40
1	A	111	LEU	O-C-N	7.22	134.25	122.70
1	B	57	GLY	O-C-N	7.21	134.24	122.70
1	A	18	ASP	CB-CG-OD1	7.19	124.77	118.30
1	A	55	LEU	C-N-CA	7.18	139.66	121.70
1	B	97	ALA	C-N-CA	7.11	139.46	121.70
1	A	50	SER	CA-C-O	7.10	135.01	120.10
1	A	46	SER	CA-CB-OG	-6.92	92.51	111.20
1	A	33	PHE	CB-CG-CD1	-6.89	115.97	120.80
1	B	103	ARG	O-C-N	-6.64	112.07	122.70
1	A	78	TYR	CB-CG-CD2	6.63	124.98	121.00
1	B	38	ASP	CB-CG-OD2	-6.63	112.33	118.30
1	A	87	PHE	CG-CD1-CE1	6.60	128.06	120.80
1	B	45	ALA	CB-CA-C	6.58	119.97	110.10
1	A	38	ASP	CB-CG-OD2	-6.58	112.38	118.30
1	A	62	GLU	CG-CD-OE1	6.57	131.44	118.30
1	A	55	LEU	CB-CG-CD2	-6.54	99.89	111.00
1	B	101	GLY	N-CA-C	-6.46	96.96	113.10
1	A	114	TYR	CA-CB-CG	-6.42	101.21	113.40
1	B	97	ALA	CB-CA-C	6.25	119.47	110.10
1	A	39	ASP	N-CA-CB	-6.21	99.42	110.60
1	B	124	ASN	N-CA-CB	6.12	121.62	110.60

Continued on next page...

Continued from previous page...

Mol	Chain	Res	Type	Atoms	Z	Observed(°)	Ideal(°)
1	A	16	VAL	CA-CB-CG2	6.02	119.94	110.90
1	B	103	ARG	N-CA-C	6.01	127.24	111.00
1	A	72	GLU	CG-CD-OE2	-5.98	106.34	118.30
1	A	21	ARG	CB-CA-C	-5.98	98.45	110.40
1	A	82	LEU	CA-CB-CG	5.96	129.01	115.30
1	B	18	ASP	CB-CG-OD1	5.95	123.66	118.30
1	A	33	PHE	CB-CG-CD2	5.89	124.92	120.80
1	B	65	VAL	CA-CB-CG1	5.86	119.69	110.90
1	B	89	GLU	OE1-CD-OE2	-5.85	116.28	123.30
1	B	34	ARG	NH1-CZ-NH2	-5.82	113.00	119.40
1	B	114	TYR	CB-CG-CD2	5.82	124.49	121.00
1	A	93	VAL	CG1-CB-CG2	-5.79	101.63	110.90
1	B	26	ILE	CB-CA-C	5.79	123.19	111.60
1	B	65	VAL	O-C-N	-5.76	113.48	122.70
1	B	118	THR	O-C-N	5.76	131.92	122.70
1	B	38	ASP	CB-CG-OD1	5.66	123.40	118.30
1	A	56	HIS	CB-CA-C	-5.65	99.10	110.40
1	A	86	PRO	O-C-N	-5.65	113.66	122.70
1	A	66	GLU	CG-CD-OE1	5.62	129.53	118.30
1	A	72	GLU	CB-CA-C	-5.58	99.23	110.40
1	B	74	ASP	CB-CG-OD2	-5.56	113.29	118.30
1	A	72	GLU	CB-CG-CD	-5.56	99.18	114.20
1	A	92	GLU	CG-CD-OE1	5.56	129.42	118.30
1	A	85	SER	N-CA-CB	-5.55	102.17	110.50
1	A	98	ASN	O-C-N	5.55	131.58	122.70
1	B	106	THR	N-CA-CB	5.48	120.71	110.30
1	A	61	GLU	OE1-CD-OE2	5.45	129.83	123.30
1	B	99	ASP	CB-CG-OD1	5.38	123.15	118.30
1	A	127	GLU	CG-CD-OE1	5.36	129.02	118.30
1	A	87	PHE	CD1-CE1-CZ	-5.32	113.71	120.10
1	A	26	ILE	CA-CB-CG1	-5.30	100.93	111.00
1	A	13[A]	MET	CB-CA-C	5.26	120.92	110.40
1	A	13[B]	MET	CB-CA-C	5.26	120.92	110.40
1	A	30	VAL	CA-CB-CG2	5.26	118.79	110.90
1	B	54	GLU	OE1-CD-OE2	5.24	129.59	123.30
1	A	12	LEU	CA-C-O	-5.23	109.11	120.10
1	B	46	SER	CA-CB-OG	5.23	125.33	111.20
1	A	25	ALA	CB-CA-C	5.20	117.90	110.10
1	A	92	GLU	CG-CD-OE2	-5.17	107.96	118.30
1	B	114	TYR	CB-CG-CD1	-5.14	117.92	121.00
1	B	40	THR	N-CA-CB	5.12	120.03	110.30
1	A	18	ASP	N-CA-CB	-5.10	101.41	110.60

Continued on next page...

Continued from previous page...

Mol	Chain	Res	Type	Atoms	Z	Observed(°)	Ideal(°)
1	B	106	THR	CA-CB-CG2	5.10	119.54	112.40
1	A	49	THR	CA-C-O	5.08	130.76	120.10
1	A	40	THR	CA-CB-CG2	5.07	119.50	112.40
1	B	51	GLU	CB-CA-C	-5.06	100.29	110.40
1	B	104	ARG	CB-CA-C	-5.04	100.31	110.40
1	A	13[A]	MET	CG-SD-CE	-5.04	92.14	100.20
1	A	13[B]	MET	CG-SD-CE	-5.04	92.14	100.20
1	A	31	HIS	O-C-N	5.03	130.75	122.70
1	A	125	PRO	CA-C-N	-5.03	106.14	117.20
1	B	18	ASP	CB-CG-OD2	-5.00	113.80	118.30
1	B	77	SER	O-C-N	5.00	130.70	122.70

There are no chirality outliers.

There are no planarity outliers.

5.2 Too-close contacts ⓘ

In the following table, the Non-H and H(model) columns list the number of non-hydrogen atoms and hydrogen atoms in the chain respectively. The H(added) column lists the number of hydrogen atoms added and optimized by MolProbity. The Clashes column lists the number of clashes within the asymmetric unit, whereas Symm-Clashes lists symmetry related clashes.

Mol	Chain	Non-H	H(model)	H(added)	Clashes	Symm-Clashes
1	A	925	0	899	21	0
1	B	903	0	878	42	0
2	A	22	0	12	0	0
2	B	22	0	11	2	0
3	A	50	0	0	3	0
3	B	48	0	0	4	0
All	All	1970	0	1800	62	0

The all-atom clashscore is defined as the number of clashes found per 1000 atoms (including hydrogen atoms). The all-atom clashscore for this structure is 17.

All (62) close contacts within the same asymmetric unit are listed below, sorted by their clash magnitude.

Atom-1	Atom-2	Interatomic distance (Å)	Clash overlap (Å)
1:B:103:ARG:HD3	1:B:124:ASN:HB3	1.19	1.16
1:B:103:ARG:CD	1:B:124:ASN:HB3	1.87	1.05
1:A:117:SER:HB2	1:B:117:SER:HB2	1.55	0.87

Continued on next page...

Continued from previous page...

Atom-1	Atom-2	Interatomic distance (Å)	Clash overlap (Å)
1:A:21:ARG:HH11	1:A:21:ARG:HG2	1.41	0.85
1:B:13[B]:MET:HE1	1:B:54:GLU:HG2	1.57	0.85
1:B:13[B]:MET:CE	1:B:54:GLU:HG2	2.06	0.84
1:B:92:GLU:HB2	3:B:154:HOH:O	1.83	0.79
1:B:116:TYR:OH	3:B:134:HOH:O	1.99	0.78
1:A:21:ARG:NH1	1:A:21:ARG:HG2	1.99	0.76
1:A:106:THR:HG23	3:A:137:HOH:O	1.85	0.76
1:A:36:ALA:HB3	1:A:40:THR:HG22	1.69	0.72
1:B:26:ILE:C	1:B:26:ILE:HD13	2.09	0.71
1:A:38:ASP:O	1:A:39:ASP:HB3	1.90	0.71
1:B:103:ARG:HD3	1:B:124:ASN:CB	2.11	0.71
1:B:103:ARG:O	1:B:104:ARG:HD3	1.91	0.71
1:B:38:ASP:O	1:B:39:ASP:HB2	1.92	0.69
1:B:21:ARG:NH1	1:B:78:TYR:OH	2.26	0.68
1:A:70:LYS:HD2	1:A:92:GLU:HG3	1.76	0.67
1:B:18:ASP:OD2	1:B:21:ARG:NH1	2.29	0.66
1:B:103:ARG:HG3	1:B:104:ARG:H	1.58	0.65
1:B:36:ALA:HB2	1:B:42:GLU:HG2	1.79	0.65
1:B:104:ARG:HB2	1:B:123:THR:O	1.97	0.64
1:B:13[B]:MET:HG2	1:B:14:VAL:N	2.12	0.64
1:B:26:ILE:O	1:B:26:ILE:HD13	1.98	0.63
1:B:103:ARG:HG3	1:B:104:ARG:N	2.12	0.63
1:B:103:ARG:NE	1:B:124:ASN:HB3	2.13	0.62
1:B:117:SER:OG	2:B:130:T33:I3'	2.86	0.61
1:B:15:LYS:HE2	1:B:17:LEU:HD21	1.84	0.60
1:B:13[B]:MET:CE	1:B:54:GLU:CG	2.81	0.56
1:B:104:ARG:HH11	1:B:104:ARG:HG3	1.71	0.56
1:B:98:ASN:O	1:B:101:GLY:O	2.24	0.56
1:B:26:ILE:HB	1:B:50:SER:O	2.06	0.55
1:B:35:LYS:HD2	1:B:40:THR:O	2.10	0.52
1:B:13[B]:MET:HG2	1:B:14:VAL:H	1.75	0.52
1:A:66:GLU:HG2	3:A:175:HOH:O	2.10	0.51
1:A:26:ILE:HD13	1:A:51:GLU:HA	1.93	0.51
1:B:55:LEU:HD13	1:B:58:LEU:HD21	1.93	0.50
1:B:33:PHE:HB2	1:B:70:LYS:HB3	1.92	0.50
1:B:80:LYS:HA	3:B:177:HOH:O	2.11	0.50
1:B:26:ILE:HG23	1:B:26:ILE:HD12	1.60	0.48
1:B:23:SER:HB2	1:B:24:PRO:HD2	1.96	0.47
1:B:42:GLU:HA	1:B:43:PRO:HD3	1.74	0.47
1:A:70:LYS:CD	1:A:92:GLU:HG3	2.44	0.47
1:B:66:GLU:OE2	1:B:98:ASN:OD1	2.32	0.47

Continued on next page...

Continued from previous page...

Atom-1	Atom-2	Interatomic distance (Å)	Clash overlap (Å)
1:A:60:THR:OG1	1:A:63[B]:GLN:HG3	2.14	0.47
1:B:13[B]:MET:HE2	1:B:54:GLU:HB3	1.97	0.46
1:A:11:PRO:HG2	1:A:59:THR:HG23	1.97	0.46
1:A:39:ASP:O	1:A:39:ASP:CG	2.54	0.46
1:B:35:LYS:HD2	1:B:35:LYS:HA	1.75	0.45
1:A:46:SER:HB2	3:A:156:HOH:O	2.17	0.43
1:A:103:ARG:HD3	1:A:103:ARG:HH11	1.56	0.43
1:A:76:LYS:O	1:A:80:LYS:HG2	2.19	0.43
1:A:21:ARG:NH1	1:A:21:ARG:CG	2.71	0.43
1:A:36:ALA:HB2	1:A:42:GLU:CD	2.38	0.43
1:A:38:ASP:OD1	1:A:38:ASP:N	2.50	0.42
1:B:34:ARG:NH2	1:B:66:GLU:O	2.53	0.42
1:B:108:ALA:HB1	2:B:130:T33:C6	2.50	0.42
1:B:38:ASP:O	1:B:39:ASP:CB	2.62	0.42
1:A:103:ARG:HA	1:A:125:PRO:HD3	2.02	0.41
1:A:37:ALA:C	1:A:39:ASP:H	2.23	0.41
1:B:87:PHE:HB2	1:B:114:TYR:CD2	2.56	0.41
1:B:31:HIS:CE1	3:B:155:HOH:O	2.75	0.40

There are no symmetry-related clashes.

5.3 Torsion angles [i](#)

5.3.1 Protein backbone [i](#)

In the following table, the Percentiles column shows the percent Ramachandran outliers of the chain as a percentile score with respect to all X-ray entries followed by that with respect to entries of similar resolution.

The Analysed column shows the number of residues for which the backbone conformation was analysed, and the total number of residues.

Mol	Chain	Analysed	Favoured	Allowed	Outliers	Percentiles	
1	A	119/127 (94%)	117 (98%)	2 (2%)	0	100	100
1	B	116/127 (91%)	107 (92%)	8 (7%)	1 (1%)	21	13
All	All	235/254 (92%)	224 (95%)	10 (4%)	1 (0%)	39	33

All (1) Ramachandran outliers are listed below:

Mol	Chain	Res	Type
1	B	99	ASP

5.3.2 Protein sidechains ⓘ

In the following table, the Percentiles column shows the percent sidechain outliers of the chain as a percentile score with respect to all X-ray entries followed by that with respect to entries of similar resolution.

The Analysed column shows the number of residues for which the sidechain conformation was analysed, and the total number of residues.

Mol	Chain	Analysed	Rotameric	Outliers	Percentiles	
1	A	102/105 (97%)	94 (92%)	8 (8%)	16	10
1	B	99/105 (94%)	85 (86%)	14 (14%)	4	2
All	All	201/210 (96%)	179 (89%)	22 (11%)	7	4

All (22) residues with a non-rotameric sidechain are listed below:

Mol	Chain	Res	Type
1	A	10	CYS
1	A	21	ARG
1	A	46	SER
1	A	51	GLU
1	A	80	LYS
1	A	86	PRO
1	A	115	SER
1	A	117	SER
1	B	10	CYS
1	B	26	ILE
1	B	27	ASN
1	B	35	LYS
1	B	38	ASP
1	B	39	ASP
1	B	42	GLU
1	B	55	LEU
1	B	56	HIS
1	B	76	LYS
1	B	82	LEU
1	B	104	ARG
1	B	117	SER
1	B	123	THR

Some sidechains can be flipped to improve hydrogen bonding and reduce clashes. All (1) such sidechains are listed below:

Mol	Chain	Res	Type
1	B	56	HIS

5.3.3 RNA [i](#)

There are no RNA molecules in this entry.

5.4 Non-standard residues in protein, DNA, RNA chains [i](#)

There are no non-standard protein/DNA/RNA residues in this entry.

5.5 Carbohydrates [i](#)

There are no carbohydrates in this entry.

5.6 Ligand geometry [i](#)

2 ligands are modelled in this entry.

In the following table, the Counts columns list the number of bonds (or angles) for which Mogul statistics could be retrieved, the number of bonds (or angles) that are observed in the model and the number of bonds (or angles) that are defined in the chemical component dictionary. The Link column lists molecule types, if any, to which the group is linked. The Z score for a bond length (or angle) is the number of standard deviations the observed value is removed from the expected value. A bond length (or angle) with $|Z| > 2$ is considered an outlier worth inspection. RMSZ is the root-mean-square of all Z scores of the bond lengths (or angles).

Mol	Type	Chain	Res	Link	Bond lengths			Bond angles		
					Counts	RMSZ	# $ Z > 2$	Counts	RMSZ	# $ Z > 2$
2	T33	A	130	-	20,23,23	2.03	5 (25%)	23,32,32	4.59	17 (73%)
2	T33	B	130	-	20,23,23	1.26	3 (15%)	23,32,32	2.77	14 (60%)

In the following table, the Chirals column lists the number of chiral outliers, the number of chiral centers analysed, the number of these observed in the model and the number defined in the chemical component dictionary. Similar counts are reported in the Torsion and Rings columns. '-' means no outliers of that kind were identified.

Mol	Type	Chain	Res	Link	Chirals	Torsions	Rings
2	T33	A	130	-	-	0/8/12/12	0/2/2/2

Continued on next page...

Continued from previous page...

Mol	Type	Chain	Res	Link	Chirals	Torsions	Rings
2	T33	B	130	-	-	0/8/12/12	0/2/2/2

All (8) bond length outliers are listed below:

Mol	Chain	Res	Type	Atoms	Z	Observed(Å)	Ideal(Å)
2	B	130	T33	O4-C1'	2.18	1.44	1.39
2	A	130	T33	C4-C3	2.34	1.43	1.39
2	A	130	T33	C5'-C4'	2.49	1.44	1.39
2	B	130	T33	C4-C3	2.64	1.44	1.39
2	A	130	T33	O4-C1'	2.87	1.45	1.39
2	B	130	T33	C6'-C1'	3.12	1.44	1.38
2	A	130	T33	C3'-I3'	4.14	2.20	2.10
2	A	130	T33	C6'-C1'	5.37	1.49	1.38

All (31) bond angle outliers are listed below:

Mol	Chain	Res	Type	Atoms	Z	Observed(°)	Ideal(°)
2	A	130	T33	C5'-C6'-C1'	-11.93	104.72	119.74
2	B	130	T33	C5'-C6'-C1'	-6.07	112.10	119.74
2	A	130	T33	O4-C1'-C2'	-4.15	106.45	119.04
2	A	130	T33	C6-C1-C2	-3.75	112.99	118.55
2	A	130	T33	C5-C4-C3	-3.00	114.78	120.75
2	B	130	T33	C6-C1-C2	-2.98	114.13	118.55
2	B	130	T33	O4-C1'-C2'	-2.50	111.46	119.04
2	A	130	T33	O4'-C4'-C3'	-2.41	115.38	119.16
2	B	130	T33	O4'-C4'-C3'	-2.34	115.48	119.16
2	B	130	T33	C5-C4-C3	-2.34	116.10	120.75
2	A	130	T33	C7-C1-C2	-2.29	115.95	120.36
2	A	130	T33	C5-C6-C1	2.21	124.06	121.04
2	A	130	T33	C1'-C2'-C3'	2.21	125.26	118.96
2	B	130	T33	C5-C6-C1	2.52	124.49	121.04
2	B	130	T33	C7-C1-C6	2.67	126.50	120.90
2	B	130	T33	C6'-C5'-C4'	2.70	123.26	120.49
2	B	130	T33	C1-C7-C8	2.82	120.87	114.34
2	B	130	T33	C6'-C1'-C2'	3.01	124.79	120.56
2	B	130	T33	C4'-C3'-I3'	3.48	124.22	119.74
2	A	130	T33	C4-O4-C1'	3.54	127.02	117.77
2	A	130	T33	O4-C4-C5	3.74	130.46	120.82
2	B	130	T33	C5'-C4'-C3'	3.77	122.81	119.37
2	B	130	T33	O4-C4-C5	3.86	130.78	120.82
2	A	130	T33	C4'-C3'-I3'	4.24	125.20	119.74
2	A	130	T33	C2'-C3'-I3'	4.36	126.87	118.60

Continued on next page...

Continued from previous page...

Mol	Chain	Res	Type	Atoms	Z	Observed($^{\circ}$)	Ideal($^{\circ}$)
2	B	130	T33	C4-O4-C1'	4.78	130.27	117.77
2	A	130	T33	C7-C1-C6	4.81	130.97	120.90
2	A	130	T33	C6'-C1'-C2'	5.86	128.80	120.56
2	A	130	T33	C6'-C5'-C4'	6.60	127.26	120.49
2	A	130	T33	C1-C7-C8	7.05	130.64	114.34
2	A	130	T33	C5'-C4'-C3'	7.33	126.06	119.37

There are no chirality outliers.

There are no torsion outliers.

There are no ring outliers.

1 monomer is involved in 2 short contacts:

Mol	Chain	Res	Type	Clashes	Symm-Clashes
2	B	130	T33	2	0

5.7 Other polymers [i](#)

There are no such residues in this entry.

5.8 Polymer linkage issues [i](#)

There are no chain breaks in this entry.

6 Fit of model and data [i](#)

6.1 Protein, DNA and RNA chains [i](#)

EDS was not executed - this section will therefore be empty.

6.2 Non-standard residues in protein, DNA, RNA chains [i](#)

EDS was not executed - this section will therefore be empty.

6.3 Carbohydrates [i](#)

EDS was not executed - this section will therefore be empty.

6.4 Ligands [i](#)

EDS was not executed - this section will therefore be empty.

6.5 Other polymers [i](#)

EDS was not executed - this section will therefore be empty.