



# wwPDB X-ray Structure Validation Summary Report ⓘ

Nov 1, 2016 – 02:48 AM EDT

PDB ID : 5THW  
Title : Crystal structure of Amidase, hydantoinase/carbamoylase family from Burkholderia multivorans  
Authors : Seattle Structural Genomics Center for Infectious Disease (SSGCID)  
Deposited on : 2016-09-30  
Resolution : 2.50 Å(reported)

This is a wwPDB X-ray Structure Validation Summary Report for a publicly released PDB entry.

We welcome your comments at [validation@mail.wwpdb.org](mailto:validation@mail.wwpdb.org)

A user guide is available at

<http://wwpdb.org/validation/2016/XrayValidationReportHelp>

with specific help available everywhere you see the ⓘ symbol.

---

The following versions of software and data (see [references ⓘ](#)) were used in the production of this report:

MolProbity	:	4.02b-467
Mogul	:	1.7.1 (RC1), CSD as537be (2016)
Xtriage (Phenix)	:	1.9-1692
EDS	:	rb-20028320
Percentile statistics	:	20151230.v01 (using entries in the PDB archive December 30th 2015)
Refmac	:	5.8.0135
CCP4	:	6.5.0
Ideal geometry (proteins)	:	Engh & Huber (2001)
Ideal geometry (DNA, RNA)	:	Parkinson et al. (1996)
Validation Pipeline (wwPDB-VP)	:	rb-20028320

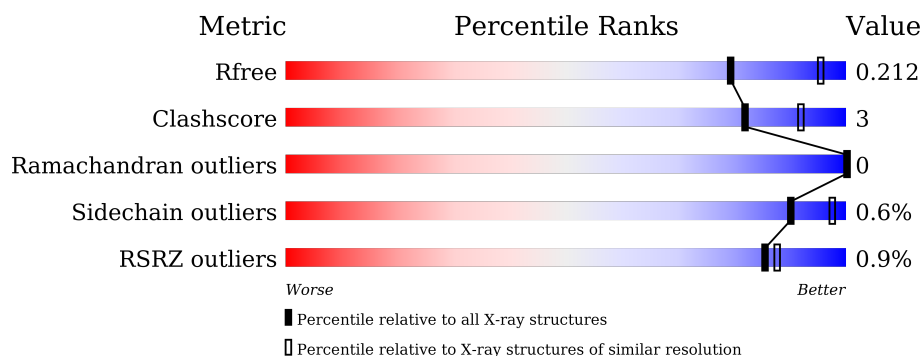
# 1 Overall quality at a glance ⓘ

The following experimental techniques were used to determine the structure:

## *X-RAY DIFFRACTION*

The reported resolution of this entry is 2.50 Å.

Percentile scores (ranging between 0-100) for global validation metrics of the entry are shown in the following graphic. The table shows the number of entries on which the scores are based.



Metric	Whole archive (#Entries)	Similar resolution (#Entries, resolution range(Å))
$R_{free}$	91344	3553 (2.50-2.50)
Clashscore	102246	4242 (2.50-2.50)
Ramachandran outliers	100387	4156 (2.50-2.50)
Sidechain outliers	100360	4158 (2.50-2.50)
RSRZ outliers	91569	3562 (2.50-2.50)

The table below summarises the geometric issues observed across the polymeric chains and their fit to the electron density. The red, orange, yellow and green segments on the lower bar indicate the fraction of residues that contain outliers for  $\geq 3$ , 2, 1 and 0 types of geometric quality criteria. A grey segment represents the fraction of residues that are not modelled. The numeric value for each fraction is indicated below the corresponding segment, with a dot representing fractions  $\leq 5\%$ . The upper red bar (where present) indicates the fraction of residues that have poor fit to the electron density. The numeric value is given above the bar.

Mol	Chain	Length	Quality of chain
1	A	434	<div> <div> <div></div> <div>88%</div> <div>7%</div> <div>5%</div> </div> <div> <div></div> <div>2%</div> </div> </div>
1	B	434	<div> <div> <div></div> <div>87%</div> <div>8%</div> <div>5%</div> </div> <div> <div></div> <div>2%</div> </div> </div>
1	C	434	<div> <div> <div></div> <div>90%</div> <div>•</div> <div>5%</div> </div> </div>
1	D	434	<div> <div> <div></div> <div>84%</div> <div>10%</div> <div>•</div> <div>5%</div> </div> </div>

The following table lists non-polymeric compounds, carbohydrate monomers and non-standard residues in protein, DNA, RNA chains that are outliers for geometric or electron-density-fit crite-

ria:

Mol	Type	Chain	Res	Chirality	Geometry	Clashes	Electron density
4	EDO	B	502	-	-	-	X
4	EDO	D	502	-	-	-	X

## 2 Entry composition

There are 5 unique types of molecules in this entry. The entry contains 12929 atoms, of which 0 are hydrogens and 0 are deuteriums.

In the tables below, the ZeroOcc column contains the number of atoms modelled with zero occupancy, the AltConf column contains the number of residues with at least one atom in alternate conformation and the Trace column contains the number of residues modelled with at most 2 atoms.

- Molecule 1 is a protein called Deacylase.

Mol	Chain	Residues	Atoms					ZeroOcc	AltConf	Trace
1	A	412	Total	C	N	O	S	0	2	0
			3092	1943	549	581	19			
1	B	412	Total	C	N	O	S	0	5	0
			3105	1947	561	578	19			
1	C	412	Total	C	N	O	S	0	2	0
			3097	1944	555	579	19			
1	D	411	Total	C	N	O	S	0	1	0
			3078	1932	549	578	19			

There are 32 discrepancies between the modelled and reference sequences:

Chain	Residue	Modelled	Actual	Comment	Reference
A	-7	MET	-	initiating methionine	UNP A0A0H3KRF1
A	-6	ALA	-	expression tag	UNP A0A0H3KRF1
A	-5	HIS	-	expression tag	UNP A0A0H3KRF1
A	-4	HIS	-	expression tag	UNP A0A0H3KRF1
A	-3	HIS	-	expression tag	UNP A0A0H3KRF1
A	-2	HIS	-	expression tag	UNP A0A0H3KRF1
A	-1	HIS	-	expression tag	UNP A0A0H3KRF1
A	0	HIS	-	expression tag	UNP A0A0H3KRF1
B	-7	MET	-	initiating methionine	UNP A0A0H3KRF1
B	-6	ALA	-	expression tag	UNP A0A0H3KRF1
B	-5	HIS	-	expression tag	UNP A0A0H3KRF1
B	-4	HIS	-	expression tag	UNP A0A0H3KRF1
B	-3	HIS	-	expression tag	UNP A0A0H3KRF1
B	-2	HIS	-	expression tag	UNP A0A0H3KRF1
B	-1	HIS	-	expression tag	UNP A0A0H3KRF1
B	0	HIS	-	expression tag	UNP A0A0H3KRF1
C	-7	MET	-	initiating methionine	UNP A0A0H3KRF1
C	-6	ALA	-	expression tag	UNP A0A0H3KRF1
C	-5	HIS	-	expression tag	UNP A0A0H3KRF1
C	-4	HIS	-	expression tag	UNP A0A0H3KRF1
C	-3	HIS	-	expression tag	UNP A0A0H3KRF1

*Continued on next page...*

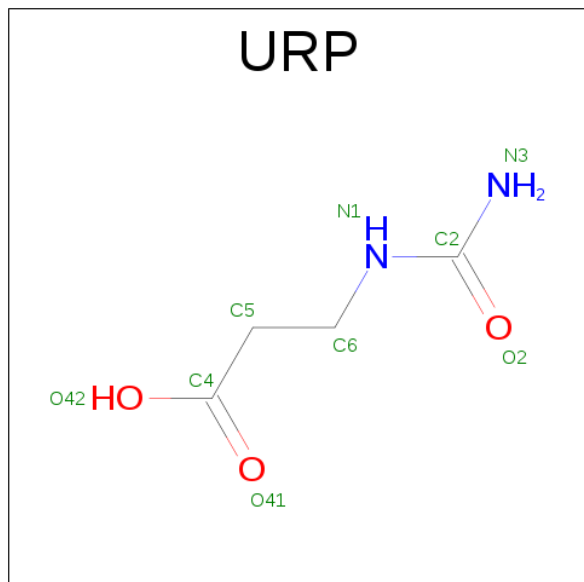
Continued from previous page...

Chain	Residue	Modelled	Actual	Comment	Reference
C	-2	HIS	-	expression tag	UNP A0A0H3KRF1
C	-1	HIS	-	expression tag	UNP A0A0H3KRF1
C	0	HIS	-	expression tag	UNP A0A0H3KRF1
D	-7	MET	-	initiating methionine	UNP A0A0H3KRF1
D	-6	ALA	-	expression tag	UNP A0A0H3KRF1
D	-5	HIS	-	expression tag	UNP A0A0H3KRF1
D	-4	HIS	-	expression tag	UNP A0A0H3KRF1
D	-3	HIS	-	expression tag	UNP A0A0H3KRF1
D	-2	HIS	-	expression tag	UNP A0A0H3KRF1
D	-1	HIS	-	expression tag	UNP A0A0H3KRF1
D	0	HIS	-	expression tag	UNP A0A0H3KRF1

- Molecule 2 is ZINC ION (three-letter code: ZN) (formula: Zn).

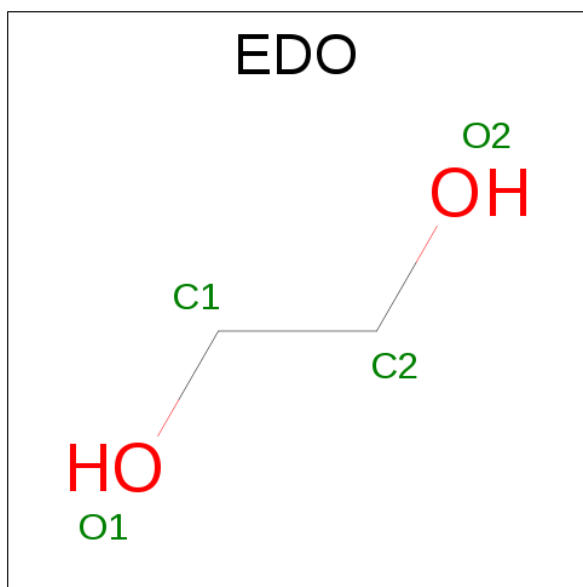
Mol	Chain	Residues	Atoms	ZeroOcc	AltConf
2	B	1	Total Zn 1 1	0	0
2	A	2	Total Zn 2 2	0	0
2	D	1	Total Zn 1 1	0	0
2	C	2	Total Zn 2 2	0	0

- Molecule 3 is N-(AMINOCARBONYL)-BETA-ALANINE (three-letter code: URP) (formula: C<sub>4</sub>H<sub>8</sub>N<sub>2</sub>O<sub>3</sub>).



Mol	Chain	Residues	Atoms				ZeroOcc	AltConf
3	A	1	Total	C	N	O	0	0
			9	4	2	3		
3	C	1	Total	C	N	O	0	0
			9	4	2	3		

- Molecule 4 is 1,2-ETHANEDIOL (three-letter code: EDO) (formula: C<sub>2</sub>H<sub>6</sub>O<sub>2</sub>).



Mol	Chain	Residues	Atoms			ZeroOcc	AltConf
4	B	1	Total	C	O	0	0
			4	2	2		
4	D	1	Total	C	O	0	0
			4	2	2		

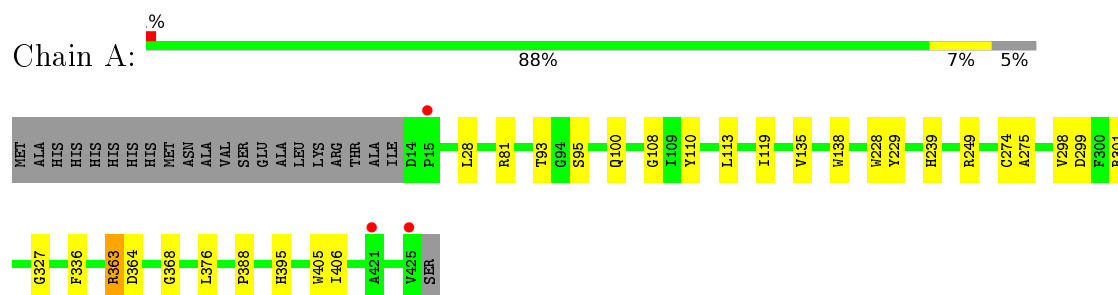
- Molecule 5 is water.

Mol	Chain	Residues	Atoms		ZeroOcc	AltConf
5	A	117	Total	O	0	0
			117	117		
5	B	161	Total	O	0	2
			163	163		
5	C	104	Total	O	0	0
			104	104		
5	D	141	Total	O	0	0
			141	141		

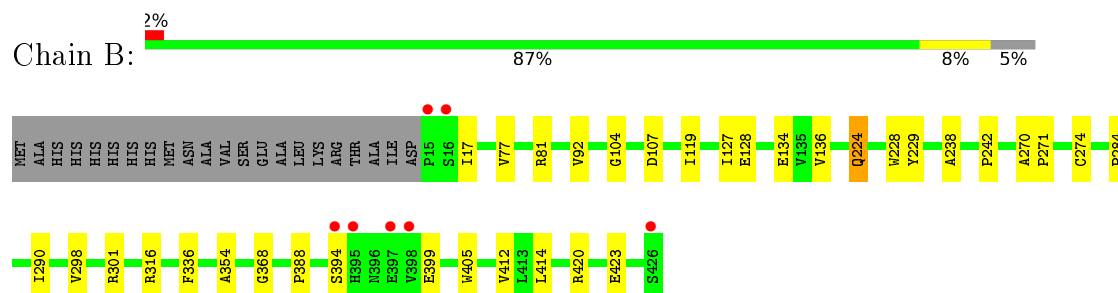
### 3 Residue-property plots [i](#)

These plots are drawn for all protein, RNA and DNA chains in the entry. The first graphic for a chain summarises the proportions of errors displayed in the second graphic. The second graphic shows the sequence view annotated by issues in geometry and electron density. Residues are color-coded according to the number of geometric quality criteria for which they contain at least one outlier: green = 0, yellow = 1, orange = 2 and red = 3 or more. A red dot above a residue indicates a poor fit to the electron density ( $RSRZ > 2$ ). Stretches of 2 or more consecutive residues without any outlier are shown as a green connector. Residues present in the sample, but not in the model, are shown in grey.

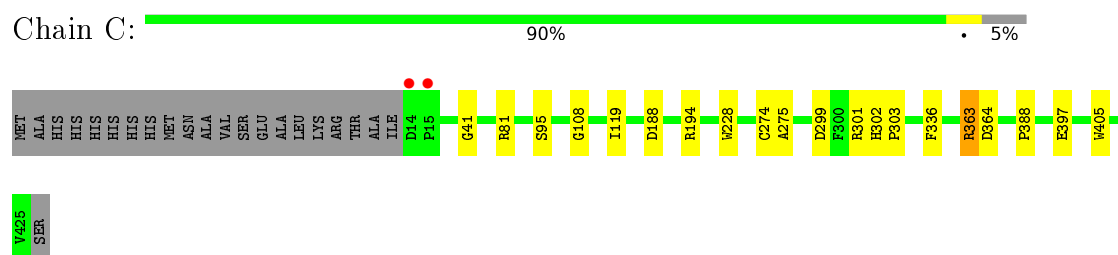
#### • Molecule 1: Deacylase



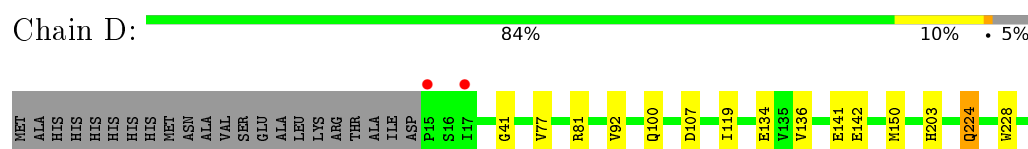
#### • Molecule 1: Deacylase



#### • Molecule 1: Deacylase



#### • Molecule 1: Deacylase



P242	P243	P244	I245	P246	I247
I252	H269	A270	P271	C274	Y294
R301	E329	T330	A331	Q334	T335
F336	Y337	Q349	R352	G368	F386
I387	P388	S394	H395	I396	E397
I398	E399	I405	I425	SER	



## 4 Data and refinement statistics

Property	Value	Source
Space group	P 1 21 1	Depositor
Cell constants a, b, c, $\alpha$ , $\beta$ , $\gamma$	86.46Å 88.51Å 126.44Å 90.00° 90.21° 90.00°	Depositor
Resolution (Å)	39.39 – 2.50 44.26 – 2.50	Depositor EDS
% Data completeness (in resolution range)	98.7 (39.39-2.50) 98.7 (44.26-2.50)	Depositor EDS
$R_{merge}$	0.08	Depositor
$R_{sym}$	(Not available)	Depositor
$\langle I/\sigma(I) \rangle$ <sup>1</sup>	2.93 (at 2.51Å)	Xtriage
Refinement program	PHENIX	Depositor
R, $R_{free}$	0.155 , 0.212 0.153 , 0.212	Depositor DCC
$R_{free}$ test set	2084 reflections (3.19%)	DCC
Wilson B-factor (Å <sup>2</sup> )	37.3	Xtriage
Anisotropy	0.618	Xtriage
Bulk solvent $k_{sol}$ (e/Å <sup>3</sup> ), $B_{sol}$ (Å <sup>2</sup> )	0.31 , 40.0	EDS
L-test for twinning <sup>2</sup>	$\langle  L  \rangle = 0.45$ , $\langle L^2 \rangle = 0.28$	Xtriage
Estimated twinning fraction	0.028 for -k,-h,-l 0.027 for k,h,-l 0.098 for h,-k,-l	Xtriage
$F_o, F_c$ correlation	0.95	EDS
Total number of atoms	12929	wwPDB-VP
Average B, all atoms (Å <sup>2</sup> )	45.0	wwPDB-VP

Xtriage's analysis on translational NCS is as follows: *The largest off-origin peak in the Patterson function is 3.69% of the height of the origin peak. No significant pseudotranslation is detected.*

<sup>1</sup> Intensities estimated from amplitudes.

<sup>2</sup> Theoretical values of  $\langle |L| \rangle$ ,  $\langle L^2 \rangle$  for acentric reflections are 0.5, 0.333 respectively for untwinned datasets, and 0.375, 0.2 for perfectly twinned datasets.

## 5 Model quality [i](#)

### 5.1 Standard geometry [i](#)

Bond lengths and bond angles in the following residue types are not validated in this section: ZN, URP, EDO

The Z score for a bond length (or angle) is the number of standard deviations the observed value is removed from the expected value. A bond length (or angle) with  $|Z| > 5$  is considered an outlier worth inspection. RMSZ is the root-mean-square of all Z scores of the bond lengths (or angles).

Mol	Chain	Bond lengths		Bond angles	
		RMSZ	$\# Z  > 5$	RMSZ	$\# Z  > 5$
1	A	0.30	0/3166	0.50	0/4310
1	B	0.32	0/3187	0.53	0/4334
1	C	0.31	0/3171	0.51	0/4315
1	D	0.31	0/3148	0.52	0/4286
All	All	0.31	0/12672	0.52	0/17245

There are no bond length outliers.

There are no bond angle outliers.

There are no chirality outliers.

There are no planarity outliers.

### 5.2 Too-close contacts [i](#)

In the following table, the Non-H and H(model) columns list the number of non-hydrogen atoms and hydrogen atoms in the chain respectively. The H(added) column lists the number of hydrogen atoms added and optimized by MolProbity. The Clashes column lists the number of clashes within the asymmetric unit, whereas Symm-Clashes lists symmetry related clashes.

Mol	Chain	Non-H	H(model)	H(added)	Clashes	Symm-Clashes
1	A	3092	0	3003	18	0
1	B	3105	0	3017	24	0
1	C	3097	0	3012	11	0
1	D	3078	0	2984	28	0
2	A	2	0	0	0	0
2	B	1	0	0	0	0
2	C	2	0	0	0	0
2	D	1	0	0	0	0
3	A	9	0	7	0	0

*Continued on next page...*

*Continued from previous page...*

Mol	Chain	Non-H	H(model)	H(added)	Clashes	Symm-Clashes
3	C	9	0	7	0	0
4	B	4	0	6	1	0
4	D	4	0	6	0	0
5	A	117	0	0	0	0
5	B	163	0	0	2	0
5	C	104	0	0	0	0
5	D	141	0	0	2	0
All	All	12929	0	12042	79	0

The all-atom clashscore is defined as the number of clashes found per 1000 atoms (including hydrogen atoms). The all-atom clashscore for this structure is 3.

The worst 5 of 79 close contacts within the same asymmetric unit are listed below, sorted by their clash magnitude.

Atom-1	Atom-2	Interatomic distance (Å)	Clash overlap (Å)
1:B:224:GLN:HG2	1:B:301:ARG:HB3	1.76	0.68
1:D:107:ASP:OD2	5:D:601:HOH:O	2.11	0.67
1:A:274:CYS:HB2	1:A:301:ARG:HB2	1.78	0.66
1:B:107:ASP:OD2	5:B:601:HOH:O	2.14	0.65
1:D:394:SER:HA	1:D:399:GLU:HG3	1.79	0.64

There are no symmetry-related clashes.

## 5.3 Torsion angles [i](#)

### 5.3.1 Protein backbone [i](#)

In the following table, the Percentiles column shows the percent Ramachandran outliers of the chain as a percentile score with respect to all X-ray entries followed by that with respect to entries of similar resolution.

The Analysed column shows the number of residues for which the backbone conformation was analysed, and the total number of residues.

Mol	Chain	Analysed	Favoured	Allowed	Outliers	Percentiles	
1	A	412/434 (95%)	407 (99%)	5 (1%)	0	100	100
1	B	415/434 (96%)	408 (98%)	7 (2%)	0	100	100
1	C	412/434 (95%)	408 (99%)	4 (1%)	0	100	100
1	D	410/434 (94%)	405 (99%)	5 (1%)	0	100	100

*Continued on next page...*

*Continued from previous page...*

Mol	Chain	Analysed	Favoured	Allowed	Outliers	Percentiles	
All	All	1649/1736 (95%)	1628 (99%)	21 (1%)	0	100	100

There are no Ramachandran outliers to report.

### 5.3.2 Protein sidechains ⓘ

In the following table, the Percentiles column shows the percent sidechain outliers of the chain as a percentile score with respect to all X-ray entries followed by that with respect to entries of similar resolution.

The Analysed column shows the number of residues for which the sidechain conformation was analysed, and the total number of residues.

Mol	Chain	Analysed	Rotameric	Outliers	Percentiles	
1	A	315/339 (93%)	314 (100%)	1 (0%)	94	99
1	B	313/339 (92%)	311 (99%)	2 (1%)	90	97
1	C	315/339 (93%)	313 (99%)	2 (1%)	90	97
1	D	312/339 (92%)	309 (99%)	3 (1%)	82	95
All	All	1255/1356 (93%)	1247 (99%)	8 (1%)	90	97

5 of 8 residues with a non-rotameric sidechain are listed below:

Mol	Chain	Res	Type
1	C	194	ARG
1	D	398	VAL
1	D	224	GLN
1	B	224	GLN
1	C	363	ARG

Some sidechains can be flipped to improve hydrogen bonding and reduce clashes. All (3) such sidechains are listed below:

Mol	Chain	Res	Type
1	B	224	GLN
1	B	349	GLN
1	D	224	GLN

### 5.3.3 RNA ⓘ

There are no RNA molecules in this entry.

## 5.4 Non-standard residues in protein, DNA, RNA chains ⓘ

There are no non-standard protein/DNA/RNA residues in this entry.

## 5.5 Carbohydrates ⓘ

There are no carbohydrates in this entry.

## 5.6 Ligand geometry ⓘ

Of 10 ligands modelled in this entry, 6 are monoatomic - leaving 4 for Mogul analysis.

In the following table, the Counts columns list the number of bonds (or angles) for which Mogul statistics could be retrieved, the number of bonds (or angles) that are observed in the model and the number of bonds (or angles) that are defined in the chemical component dictionary. The Link column lists molecule types, if any, to which the group is linked. The Z score for a bond length (or angle) is the number of standard deviations the observed value is removed from the expected value. A bond length (or angle) with  $|Z| > 2$  is considered an outlier worth inspection. RMSZ is the root-mean-square of all Z scores of the bond lengths (or angles).

Mol	Type	Chain	Res	Link	Bond lengths			Bond angles		
					Counts	RMSZ	$\# Z  > 2$	Counts	RMSZ	$\# Z  > 2$
3	URP	A	503	2	5,8,8	0.83	0	6,9,9	1.16	0
4	EDO	B	502	-	3,3,3	0.48	0	2,2,2	0.28	0
3	URP	C	503	2	5,8,8	0.67	0	6,9,9	1.19	0
4	EDO	D	502	-	3,3,3	0.40	0	2,2,2	0.58	0

In the following table, the Chirals column lists the number of chiral outliers, the number of chiral centers analysed, the number of these observed in the model and the number defined in the chemical component dictionary. Similar counts are reported in the Torsion and Rings columns. '-' means no outliers of that kind were identified.

Mol	Type	Chain	Res	Link	Chirals	Torsions	Rings
3	URP	A	503	2	-	2/4/6/6	0/0/0/0
4	EDO	B	502	-	-	0/1/1/1	0/0/0/0
3	URP	C	503	2	-	2/4/6/6	0/0/0/0
4	EDO	D	502	-	-	0/1/1/1	0/0/0/0

There are no bond length outliers.

There are no bond angle outliers.

There are no chirality outliers.

All (4) torsion outliers are listed below:

Mol	Chain	Res	Type	Atoms
3	A	503	URP	O2-C2-N1-C6
3	A	503	URP	N3-C2-N1-C6
3	C	503	URP	O2-C2-N1-C6
3	C	503	URP	N3-C2-N1-C6

There are no ring outliers.

1 monomer is involved in 1 short contact:

Mol	Chain	Res	Type	Clashes	Symm-Clashes
4	B	502	EDO	1	0

## 5.7 Other polymers [i](#)

There are no such residues in this entry.

## 5.8 Polymer linkage issues [i](#)

There are no chain breaks in this entry.

## 6 Fit of model and data [i](#)

### 6.1 Protein, DNA and RNA chains [i](#)

In the following table, the column labelled ‘#RSRZ> 2’ contains the number (and percentage) of RSRZ outliers, followed by percent RSRZ outliers for the chain as percentile scores relative to all X-ray entries and entries of similar resolution. The OWAB column contains the minimum, median, 95<sup>th</sup> percentile and maximum values of the occupancy-weighted average B-factor per residue. The column labelled ‘Q< 0.9’ lists the number of (and percentage) of residues with an average occupancy less than 0.9.

Mol	Chain	Analysed	<RSRZ>	#RSRZ>2	OWAB(Å <sup>2</sup> )	Q<0.9
1	A	412/434 (94%)	-0.32	3 (0%) 89 90	28, 46, 77, 117	0
1	B	412/434 (94%)	-0.31	7 (1%) 73 76	25, 36, 60, 112	0
1	C	412/434 (94%)	-0.25	2 (0%) 91 92	27, 48, 76, 131	0
1	D	411/434 (94%)	-0.21	2 (0%) 91 92	26, 40, 66, 107	0
All	All	1647/1736 (94%)	-0.27	14 (0%) 85 88	25, 42, 73, 131	0

The worst 5 of 14 RSRZ outliers are listed below:

Mol	Chain	Res	Type	RSRZ
1	C	15	PRO	4.7
1	B	426	SER	4.3
1	D	15	PRO	3.9
1	B	15	PRO	3.6
1	D	17	ILE	3.5

### 6.2 Non-standard residues in protein, DNA, RNA chains [i](#)

There are no non-standard protein/DNA/RNA residues in this entry.

### 6.3 Carbohydrates [i](#)

There are no carbohydrates in this entry.

### 6.4 Ligands [i](#)

In the following table, the Atoms column lists the number of modelled atoms in the group and the number defined in the chemical component dictionary. LLDF column lists the quality of electron density of the group with respect to its neighbouring residues in protein, DNA or RNA chains. The B-factors column lists the minimum, median, 95<sup>th</sup> percentile and maximum values of B factors

of atoms in the group. The column labelled 'Q< 0.9' lists the number of atoms with occupancy less than 0.9.

Mol	Type	Chain	Res	Atoms	RSCC	RSR	LLDF	B-factors( $\text{\AA}^2$ )	Q<0.9
4	EDO	D	502	4/4	0.97	0.15	2.92	27,32,37,46	0
4	EDO	B	502	4/4	0.97	0.16	2.75	37,38,42,44	0
2	ZN	A	502	1/1	1.00	0.14	1.62	35,35,35,35	1
2	ZN	C	502	1/1	1.00	0.15	1.53	23,23,23,23	1
3	URP	C	503	9/9	0.97	0.16	1.39	44,48,53,53	0
3	URP	A	503	9/9	0.98	0.14	0.39	42,47,53,61	0
2	ZN	C	501	1/1	0.95	0.13	-0.06	61,61,61,61	1
2	ZN	B	501	1/1	0.99	0.09	-2.41	55,55,55,55	0
2	ZN	A	501	1/1	0.99	0.10	-2.57	56,56,56,56	1
2	ZN	D	501	1/1	0.99	0.10	-4.01	57,57,57,57	0

## 6.5 Other polymers [i](#)

There are no such residues in this entry.