



Full wwPDB X-ray Structure Validation Report ⓘ

Feb 1, 2016 – 01:20 PM GMT

PDB ID : 3TN0
Title : Structure of mouse Va14Vb8.2NKT TCR-mouse CD1d-a-C-Galactosylceramide complex
Authors : Patel, O.; Rossjohn, J.
Deposited on : 2011-09-01
Resolution : 3.20 Å(reported)

This is a Full wwPDB X-ray Structure Validation Report for a publicly released PDB entry.
We welcome your comments at validation@mail.wwpdb.org
A user guide is available at
<http://wwpdb.org/validation/2016/XrayValidationReportHelp>
with specific help available everywhere you see the ⓘ symbol.

The following versions of software and data (see [references ⓘ](#)) were used in the production of this report:

MolProbity : 4.02b-467
Mogul : 1.7 (RC4), CSD as536be (2015)
Xtriage (Phenix) : 1.9-1692
EDS : rb-20026688
Percentile statistics : 20151230.v01 (using entries in the PDB archive December 30th 2015)
Refmac : 5.8.0135
CCP4 : 6.5.0
Ideal geometry (proteins) : Engh & Huber (2001)
Ideal geometry (DNA, RNA) : Parkinson et al. (1996)
Validation Pipeline (wwPDB-VP) : trunk26865

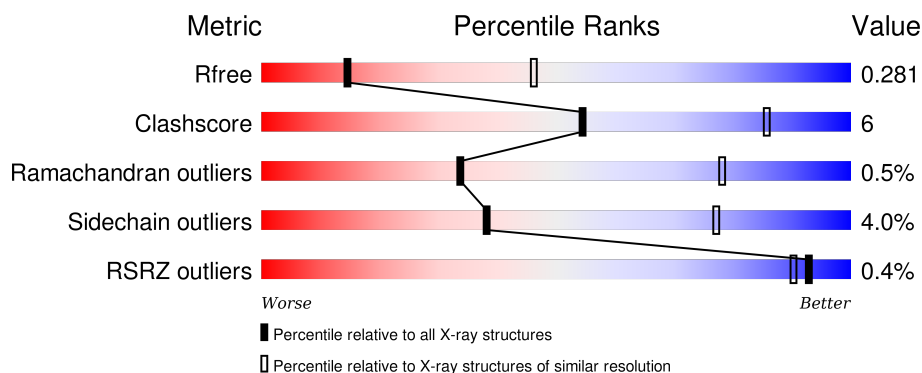
1 Overall quality at a glance

The following experimental techniques were used to determine the structure:

X-RAY DIFFRACTION

The reported resolution of this entry is 3.20 Å.

Percentile scores (ranging between 0-100) for global validation metrics of the entry are shown in the following graphic. The table shows the number of entries on which the scores are based.



Metric	Whole archive (#Entries)	Similar resolution (#Entries, resolution range(Å))
R_{free}	91344	1124 (3.24-3.16)
Clashscore	102246	1024 (3.22-3.18)
Ramachandran outliers	100387	1004 (3.22-3.18)
Sidechain outliers	100360	1003 (3.22-3.18)
RSRZ outliers	91569	1129 (3.24-3.16)

The table below summarises the geometric issues observed across the polymeric chains and their fit to the electron density. The red, orange, yellow and green segments on the lower bar indicate the fraction of residues that contain outliers for ≥ 3 , 2, 1 and 0 types of geometric quality criteria. A grey segment represents the fraction of residues that are not modelled. The numeric value for each fraction is indicated below the corresponding segment, with a dot representing fractions $\leq 5\%$. The upper red bar (where present) indicates the fraction of residues that have poor fit to the electron density. The numeric value is given above the bar.

Mol	Chain	Length	Quality of chain
1	A	302	 78% 18% . .
2	B	99	 82% 16% . .
3	C	207	 80% 17% .
4	D	244	 82% 14% . .

2 Entry composition

There are 7 unique types of molecules in this entry. The entry contains 6587 atoms, of which 0 are hydrogens and 0 are deuteriums.

In the tables below, the ZeroOcc column contains the number of atoms modelled with zero occupancy, the AltConf column contains the number of residues with at least one atom in alternate conformation and the Trace column contains the number of residues modelled with at most 2 atoms.

- Molecule 1 is a protein called Antigen-presenting glycoprotein CD1d1.

Mol	Chain	Residues	Atoms					ZeroOcc	AltConf	Trace
1	A	293	Total	C	N	O	S	0	0	0
			2300	1466	404	416	14			

There are 24 discrepancies between the modelled and reference sequences:

Chain	Residue	Modelled	Actual	Comment	Reference
A	201	HIS	ASP	SEE REMARK 999	UNP P11609
A	280	GLY	-	EXPRESSION TAG	UNP P11609
A	281	SER	-	EXPRESSION TAG	UNP P11609
A	282	LEU	-	EXPRESSION TAG	UNP P11609
A	283	HIS	-	EXPRESSION TAG	UNP P11609
A	284	HIS	-	EXPRESSION TAG	UNP P11609
A	285	ILE	-	EXPRESSION TAG	UNP P11609
A	286	LEU	-	EXPRESSION TAG	UNP P11609
A	287	ASP	-	EXPRESSION TAG	UNP P11609
A	288	ALA	-	EXPRESSION TAG	UNP P11609
A	289	GLN	-	EXPRESSION TAG	UNP P11609
A	290	LYS	-	EXPRESSION TAG	UNP P11609
A	291	MET	-	EXPRESSION TAG	UNP P11609
A	292	VAL	-	EXPRESSION TAG	UNP P11609
A	293	TRP	-	EXPRESSION TAG	UNP P11609
A	294	ASN	-	EXPRESSION TAG	UNP P11609
A	295	HIS	-	EXPRESSION TAG	UNP P11609
A	296	ARG	-	EXPRESSION TAG	UNP P11609
A	297	HIS	-	EXPRESSION TAG	UNP P11609
A	298	HIS	-	EXPRESSION TAG	UNP P11609
A	299	HIS	-	EXPRESSION TAG	UNP P11609
A	300	HIS	-	EXPRESSION TAG	UNP P11609
A	301	HIS	-	EXPRESSION TAG	UNP P11609
A	302	HIS	-	EXPRESSION TAG	UNP P11609

- Molecule 2 is a protein called Beta-2 microglobulin.

Mol	Chain	Residues	Atoms					ZeroOcc	AltConf	Trace
2	B	98	Total	C	N	O	S	0	0	0
			794	507	134	146	7			

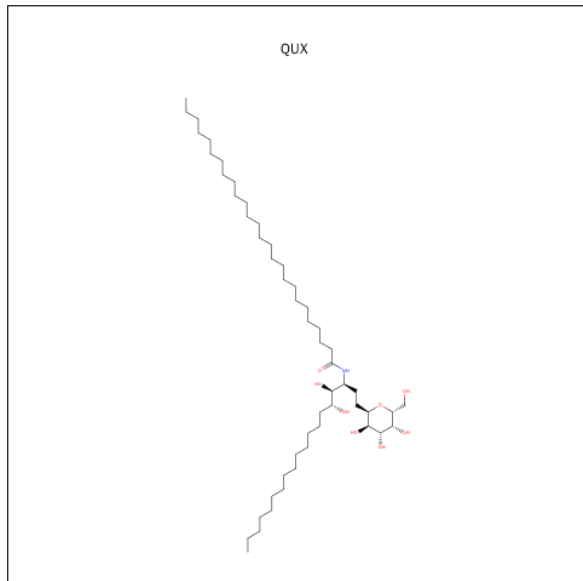
- Molecule 3 is a protein called mouse NKT Valpha14 (MOUSE VARIABLE DOMAIN, HUMAN CONSTANT DOMAIN).

Mol	Chain	Residues	Atoms					ZeroOcc	AltConf	Trace
3	C	203	Total	C	N	O	S	0	0	0
			1536	953	257	319	7			

- Molecule 4 is a protein called mouse NKT Vbeta8.2 (MOUSE VARIABLE DOMAIN, HUMAN CONSTANT DOMAIN).

Mol	Chain	Residues	Atoms					ZeroOcc	AltConf	Trace
4	D	235	Total	C	N	O	S	0	0	0
			1841	1157	325	353	6			

- Molecule 5 is N-[(3S,4S,5R)-4,5-DIHYDROXY-1-[(2R,3R,4R,5R,6R)-3,4,5-TRIHYDROXY-6-(HYDROXYMETHYL)OXAN-2-YL]NONADECAN-3-YL]HEXACOSANAMIDE (three-letter code: QUX) (formula: C₅₁H₁₀₁NO₈).

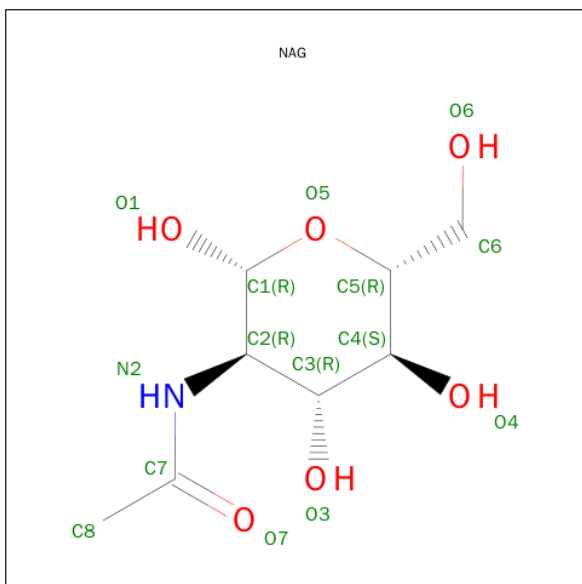


Mol	Chain	Residues	Atoms				ZeroOcc	AltConf
5	A	1	Total	C	N	O	13	0
			60	51	1	8		

- Molecule 6 is a polymer of unknown type called SUGAR (2-MER).

Mol	Chain	Residues	Atoms				ZeroOcc	AltConf
6	A	2	Total	C	N	O	0	0
			28	16	2	10		

- Molecule 7 is SUGAR (N-ACETYL-D-GLUCOSAMINE) (three-letter code: NAG) (formula: $C_8H_{15}NO_6$).

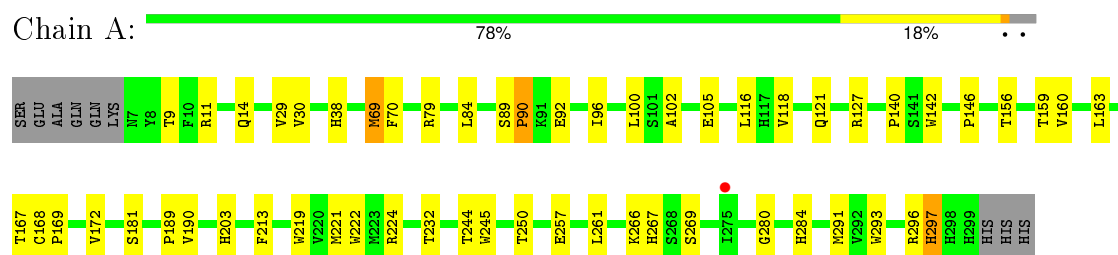


Mol	Chain	Residues	Atoms				ZeroOcc	AltConf
7	A	1	Total	C	N	O	0	0
			14	8	1	5		
7	A	1	Total	C	N	O	0	0
			14	8	1	5		

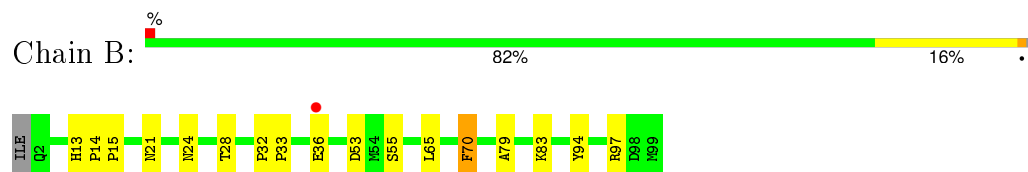
3 Residue-property plots [i](#)

These plots are drawn for all protein, RNA and DNA chains in the entry. The first graphic for a chain summarises the proportions of errors displayed in the second graphic. The second graphic shows the sequence view annotated by issues in geometry and electron density. Residues are color-coded according to the number of geometric quality criteria for which they contain at least one outlier: green = 0, yellow = 1, orange = 2 and red = 3 or more. A red dot above a residue indicates a poor fit to the electron density ($RSRZ > 2$). Stretches of 2 or more consecutive residues without any outlier are shown as a green connector. Residues present in the sample, but not in the model, are shown in grey.

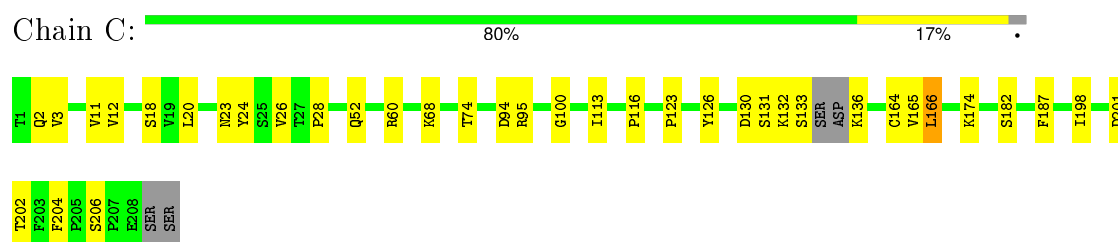
- Molecule 1: Antigen-presenting glycoprotein CD1d1



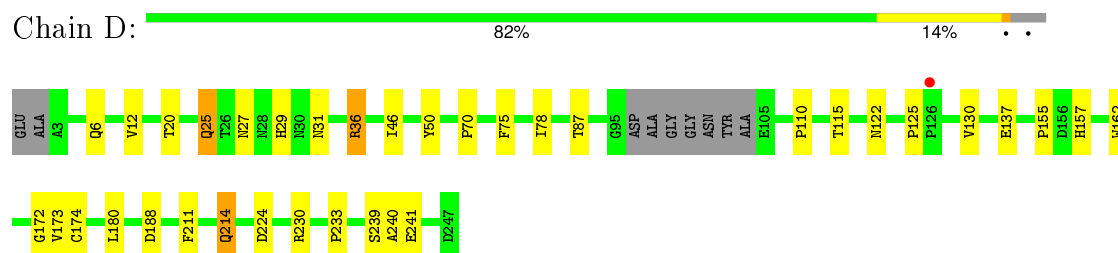
- Molecule 2: Beta-2 microglobulin



- Molecule 3: mouse NKT Valpha14 (MOUSE VARIABLE DOMAIN, HUMAN CONSTANT DOMAIN)



- Molecule 4: mouse NKT Vbeta8.2 (MOUSE VARIABLE DOMAIN, HUMAN CONSTANT DOMAIN)



4 Data and refinement statistics

Property	Value	Source
Space group	P 21 21 21	Depositor
Cell constants a, b, c, α , β , γ	59.17Å 86.37Å 236.40Å 90.00° 90.00° 90.00°	Depositor
Resolution (Å)	48.77 – 3.20 48.77 – 3.20	Depositor EDS
% Data completeness (in resolution range)	99.5 (48.77-3.20) 99.6 (48.77-3.20)	Depositor EDS
R_{merge}	0.27	Depositor
R_{sym}	(Not available)	Depositor
$\langle I/\sigma(I) \rangle$ ¹	2.28 (at 3.19Å)	Xtriage
Refinement program	REFMAC 5.5.0109	Depositor
R, R_{free}	0.225 , 0.289 0.222 , 0.281	Depositor DCC
R_{free} test set	1054 reflections (5.37%)	DCC
Wilson B-factor (Å ²)	70.7	Xtriage
Anisotropy	0.759	Xtriage
Bulk solvent k_{sol} (e/Å ³), B_{sol} (Å ²)	0.27 , 27.0	EDS
Estimated twinning fraction	No twinning to report.	Xtriage
L-test for twinning ²	$\langle L \rangle = 0.44$, $\langle L^2 \rangle = 0.26$	Xtriage
Outliers	1 of 20723 reflections (0.005%)	Xtriage
F_o, F_c correlation	0.91	EDS
Total number of atoms	6587	wwPDB-VP
Average B, all atoms (Å ²)	81.0	wwPDB-VP

Xtriage's analysis on translational NCS is as follows: *The largest off-origin peak in the Patterson function is 3.86% of the height of the origin peak. No significant pseudotranslation is detected.*

¹Intensities estimated from amplitudes.

²Theoretical values of $\langle |L| \rangle$, $\langle L^2 \rangle$ for acentric reflections are 0.5, 0.375 respectively for untwinned datasets, and 0.333, 0.2 for perfectly twinned datasets.

5 Model quality

5.1 Standard geometry

Bond lengths and bond angles in the following residue types are not validated in this section: QUX, NAG

The Z score for a bond length (or angle) is the number of standard deviations the observed value is removed from the expected value. A bond length (or angle) with $|Z| > 5$ is considered an outlier worth inspection. RMSZ is the root-mean-square of all Z scores of the bond lengths (or angles).

Mol	Chain	Bond lengths		Bond angles	
		RMSZ	$\# Z > 5$	RMSZ	$\# Z > 5$
1	A	0.34	0/2373	0.51	0/3238
2	B	0.37	0/820	0.53	0/1117
3	C	0.35	0/1564	0.53	0/2132
4	D	0.35	0/1891	0.51	0/2577
All	All	0.35	0/6648	0.52	0/9064

There are no bond length outliers.

There are no bond angle outliers.

There are no chirality outliers.

There are no planarity outliers.

5.2 Too-close contacts

In the following table, the Non-H and H(model) columns list the number of non-hydrogen atoms and hydrogen atoms in the chain respectively. The H(added) column lists the number of hydrogen atoms added and optimized by MolProbity. The Clashes column lists the number of clashes within the asymmetric unit, whereas Symm-Clashes lists symmetry related clashes.

Mol	Chain	Non-H	H(model)	H(added)	Clashes	Symm-Clashes
1	A	2300	0	2123	34	0
2	B	794	0	748	13	0
3	C	1536	0	1433	23	0
4	D	1841	0	1728	19	0
5	A	60	0	101	2	0
6	A	28	0	25	0	0
7	A	28	0	26	0	0
All	All	6587	0	6184	81	0

The all-atom clashscore is defined as the number of clashes found per 1000 atoms (including

hydrogen atoms). The all-atom clashscore for this structure is 6.

All (81) close contacts within the same asymmetric unit are listed below, sorted by their clash magnitude.

Atom-1	Atom-2	Interatomic distance (Å)	Clash overlap (Å)
2:B:13:HIS:HB2	2:B:21:ASN:HD21	1.40	0.84
1:A:30:VAL:HB	1:A:38:HIS:HB2	1.67	0.76
1:A:168:CYS:HB3	1:A:169:PRO:HD3	1.69	0.74
1:A:224:ARG:HG3	1:A:261:LEU:HD23	1.71	0.72
3:C:12:VAL:HG11	3:C:18:SER:HB3	1.71	0.71
1:A:280:GLY:H	1:A:284:HIS:CD2	2.09	0.71
4:D:25:GLN:HG2	4:D:27:ASN:H	1.57	0.70
1:A:189:PRO:HB3	1:A:213:PHE:HB3	1.73	0.69
4:D:25:GLN:HE22	4:D:29:HIS:H	1.41	0.68
3:C:3:VAL:HG12	3:C:24:TYR:CB	2.25	0.66
1:A:156:THR:HG23	5:A:303:QUX:HBIA	1.78	0.66
1:A:280:GLY:H	1:A:284:HIS:HD2	1.44	0.63
1:A:102:ALA:HB2	1:A:116:LEU:HG	1.82	0.62
3:C:3:VAL:HG12	3:C:24:TYR:HB3	1.82	0.62
3:C:95:ARG:HH21	3:C:95:ARG:HG2	1.65	0.62
1:A:267:HIS:ND1	1:A:269:SER:HB2	2.16	0.61
2:B:36:GLU:HB2	2:B:83:LYS:HB3	1.84	0.59
3:C:11:VAL:HG12	3:C:113:ILE:HB	1.85	0.58
1:A:291:MET:HB3	2:B:15:PRO:O	2.04	0.57
1:A:89:SER:CB	1:A:90:PRO:HD3	2.34	0.57
1:A:100:LEU:HG	1:A:118:VAL:HG22	1.87	0.56
3:C:95:ARG:CG	3:C:95:ARG:HH21	2.17	0.56
3:C:28:PRO:HD2	3:C:94:ASP:HB2	1.88	0.56
1:A:69:MET:HG3	1:A:70:PHE:N	2.21	0.55
1:A:140:PRO:HB2	1:A:142:TRP:CD1	2.42	0.53
1:A:163:LEU:HA	1:A:167:THR:HB	1.89	0.53
3:C:2:GLN:HE21	3:C:26:VAL:HG22	1.73	0.53
3:C:52:GLN:HA	3:C:68:LYS:HB2	1.91	0.52
3:C:3:VAL:HG12	3:C:24:TYR:HB2	1.91	0.52
2:B:79:ALA:HB2	2:B:94:TYR:CD2	2.44	0.52
4:D:20:THR:HG22	4:D:78:ILE:HD12	1.91	0.52
4:D:130:VAL:HG23	4:D:240:ALA:HB3	1.92	0.51
2:B:32:PRO:HB2	2:B:33:PRO:HD2	1.91	0.51
4:D:87:THR:HG23	4:D:115:THR:HA	1.91	0.51
1:A:79:ARG:HH22	3:C:100:GLY:HA2	1.75	0.51
4:D:155:PRO:HG2	4:D:157:HIS:HD2	1.76	0.50
4:D:214:GLN:HA	4:D:239:SER:CB	2.43	0.49
1:A:224:ARG:HG3	1:A:261:LEU:CD2	2.41	0.48

Continued on next page...

Continued from previous page...

Atom-1	Atom-2	Interatomic distance (Å)	Clash overlap (Å)
4:D:162:TRP:CD1	4:D:173:VAL:HG13	2.48	0.48
4:D:125:PRO:HD3	4:D:233:PRO:HB3	1.94	0.48
1:A:9:THR:HG23	1:A:105:GLU:HG2	1.94	0.48
3:C:95:ARG:CG	3:C:95:ARG:NH2	2.77	0.48
4:D:214:GLN:HA	4:D:239:SER:HB2	1.95	0.47
2:B:13:HIS:HB2	2:B:21:ASN:ND2	2.19	0.47
2:B:14:PRO:HA	2:B:15:PRO:HD3	1.75	0.47
3:C:123:PRO:HB2	3:C:202:THR:HA	1.96	0.47
1:A:168:CYS:O	1:A:172:VAL:HG23	2.14	0.47
1:A:293:TRP:HB3	2:B:97:ARG:NH2	2.30	0.47
1:A:14:GLN:HB3	1:A:100:LEU:HB2	1.98	0.46
1:A:224:ARG:NH2	1:A:257:GLU:O	2.48	0.46
4:D:31:ASN:HB3	4:D:50:TYR:HA	1.97	0.46
1:A:293:TRP:HB3	2:B:97:ARG:HH22	1.81	0.46
3:C:133:SER:O	3:C:136:LYS:N	2.49	0.46
3:C:166:LEU:HB3	4:D:174:CYS:HB2	1.98	0.46
1:A:296:ARG:HA	1:A:297:HIS:HA	1.78	0.46
1:A:84:LEU:HD22	1:A:146:PRO:HB3	1.98	0.46
1:A:29:VAL:HG21	2:B:55:SER:OG	2.15	0.45
2:B:32:PRO:CB	2:B:33:PRO:HD2	2.46	0.45
1:A:160:VAL:HG22	5:A:303:QUX:HBMA	1.97	0.45
3:C:24:TYR:HD1	3:C:26:VAL:H	1.64	0.45
4:D:211:PHE:O	4:D:241:GLU:HB2	2.16	0.45
1:A:222:TRP:HD1	1:A:232:THR:HG23	1.83	0.44
3:C:182:SER:HB3	3:C:187:PHE:CG	2.53	0.44
1:A:280:GLY:N	1:A:284:HIS:HD2	2.15	0.44
3:C:130:ASP:OD1	3:C:131:SER:N	2.50	0.44
4:D:6:GLN:HG2	4:D:110:PRO:HD2	2.01	0.43
3:C:116:PRO:HD3	3:C:165:VAL:HG21	2.00	0.43
1:A:221:MET:HA	1:A:232:THR:HG21	2.01	0.43
1:A:102:ALA:CB	1:A:116:LEU:HG	2.47	0.42
3:C:20:LEU:O	3:C:74:THR:HA	2.20	0.42
4:D:12:VAL:HG12	4:D:115:THR:HB	2.01	0.42
3:C:126:TYR:CE2	4:D:137:GLU:HG3	2.55	0.42
3:C:198:ILE:HD12	3:C:204:PHE:HZ	1.85	0.42
1:A:96:ILE:HA	1:A:121:GLN:NE2	2.35	0.41
1:A:219:TRP:HB3	1:A:266:LYS:HB2	2.02	0.41
4:D:36:ARG:HB3	4:D:46:ILE:HD11	2.02	0.41
1:A:244:THR:HB	1:A:245:TRP:H	1.69	0.41
4:D:25:GLN:NE2	4:D:29:HIS:H	2.13	0.41
2:B:24:ASN:HB3	2:B:65:LEU:HD11	2.01	0.41

Continued on next page...

Continued from previous page...

Atom-1	Atom-2	Interatomic distance (Å)	Clash overlap (Å)
3:C:166:LEU:HD13	4:D:172:GLY:HA2	2.03	0.41
2:B:21:ASN:HB3	2:B:70:PHE:CE1	2.57	0.40

There are no symmetry-related clashes.

5.3 Torsion angles [i](#)

5.3.1 Protein backbone [i](#)

In the following table, the Percentiles column shows the percent Ramachandran outliers of the chain as a percentile score with respect to all X-ray entries followed by that with respect to entries of similar resolution.

The Analysed column shows the number of residues for which the backbone conformation was analysed, and the total number of residues.

Mol	Chain	Analysed	Favoured	Allowed	Outliers	Percentiles	
1	A	291/302 (96%)	274 (94%)	15 (5%)	2 (1%)	26	72
2	B	96/99 (97%)	91 (95%)	5 (5%)	0	100	100
3	C	199/207 (96%)	182 (92%)	16 (8%)	1 (0%)	34	78
4	D	231/244 (95%)	216 (94%)	14 (6%)	1 (0%)	39	80
All	All	817/852 (96%)	763 (93%)	50 (6%)	4 (0%)	34	78

All (4) Ramachandran outliers are listed below:

Mol	Chain	Res	Type
4	D	70	PRO
3	C	201	ASP
1	A	92	GLU
1	A	90	PRO

5.3.2 Protein sidechains [i](#)

In the following table, the Percentiles column shows the percent sidechain outliers of the chain as a percentile score with respect to all X-ray entries followed by that with respect to entries of similar resolution.

The Analysed column shows the number of residues for which the sidechain conformation was analysed, and the total number of residues.

Mol	Chain	Analysed	Rotameric	Outliers	Percentiles	
1	A	237/264 (90%)	228 (96%)	9 (4%)	40	78
2	B	88/93 (95%)	85 (97%)	3 (3%)	44	80
3	C	173/186 (93%)	166 (96%)	7 (4%)	38	77
4	D	197/206 (96%)	188 (95%)	9 (5%)	33	74
All	All	695/749 (93%)	667 (96%)	28 (4%)	38	77

All (28) residues with a non-rotameric sidechain are listed below:

Mol	Chain	Res	Type
1	A	11	ARG
1	A	69	MET
1	A	127	ARG
1	A	159	THR
1	A	181	SER
1	A	190	VAL
1	A	203	HIS
1	A	250	THR
1	A	297	HIS
2	B	28	THR
2	B	53	ASP
2	B	70	PHE
3	C	23	ASN
3	C	60	ARG
3	C	132	LYS
3	C	164	CYS
3	C	166	LEU
3	C	174	LYS
3	C	206	SER
4	D	25	GLN
4	D	36	ARG
4	D	75	PHE
4	D	122	ASN
4	D	180	LEU
4	D	188	ASP
4	D	214	GLN
4	D	224	ASP
4	D	230	ARG

Some sidechains can be flipped to improve hydrogen bonding and reduce clashes. All (12) such sidechains are listed below:

Mol	Chain	Res	Type
1	A	240	ASN
1	A	284	HIS
1	A	297	HIS
2	B	21	ASN
2	B	42	ASN
3	C	2	GLN
3	C	30	ASN
3	C	152	GLN
4	D	10	ASN
4	D	25	GLN
4	D	72	GLN
4	D	140	HIS

5.3.3 RNA ⓘ

There are no RNA molecules in this entry.

5.4 Non-standard residues in protein, DNA, RNA chains ⓘ

There are no non-standard protein/DNA/RNA residues in this entry.

5.5 Carbohydrates ⓘ

2 carbohydrates are modelled in this entry.

In the following table, the Counts columns list the number of bonds (or angles) for which Mogul statistics could be retrieved, the number of bonds (or angles) that are observed in the model and the number of bonds (or angles) that are defined in the chemical component dictionary. The Link column lists molecule types, if any, to which the group is linked. The Z score for a bond length (or angle) is the number of standard deviations the observed value is removed from the expected value. A bond length (or angle) with $|Z| > 2$ is considered an outlier worth inspection. RMSZ is the root-mean-square of all Z scores of the bond lengths (or angles).

Mol	Type	Chain	Res	Link	Bond lengths			Bond angles		
					Counts	RMSZ	$\# Z > 2$	Counts	RMSZ	$\# Z > 2$
6	NAG	A	305	1,6	14,14,15	0.50	0	15,19,21	0.86	1 (6%)
6	NAG	A	306	6	14,14,15	0.44	0	15,19,21	1.16	1 (6%)

In the following table, the Chirals column lists the number of chiral outliers, the number of chiral centers analysed, the number of these observed in the model and the number defined in the chemical component dictionary. Similar counts are reported in the Torsion and Rings columns. '-' means no outliers of that kind were identified.

Mol	Type	Chain	Res	Link	Chirals	Torsions	Rings
6	NAG	A	305	1,6	-	0/6/23/26	0/1/1/1
6	NAG	A	306	6	-	0/6/23/26	0/1/1/1

There are no bond length outliers.

All (2) bond angle outliers are listed below:

Mol	Chain	Res	Type	Atoms	Z	Observed(°)	Ideal(°)
6	A	305	NAG	C4-C3-C2	2.04	114.39	111.23
6	A	306	NAG	C1-O5-C5	3.42	116.59	112.25

There are no chirality outliers.

There are no torsion outliers.

There are no ring outliers.

No monomer is involved in short contacts.

5.6 Ligand geometry

3 ligands are modelled in this entry.

In the following table, the Counts columns list the number of bonds (or angles) for which Mogul statistics could be retrieved, the number of bonds (or angles) that are observed in the model and the number of bonds (or angles) that are defined in the chemical component dictionary. The Link column lists molecule types, if any, to which the group is linked. The Z score for a bond length (or angle) is the number of standard deviations the observed value is removed from the expected value. A bond length (or angle) with $|Z| > 2$ is considered an outlier worth inspection. RMSZ is the root-mean-square of all Z scores of the bond lengths (or angles).

Mol	Type	Chain	Res	Link	Bond lengths			Bond angles		
					Counts	RMSZ	$\# Z > 2$	Counts	RMSZ	$\# Z > 2$
5	QUX	A	303	-	59,60,60	0.31	0	65,69,69	0.74	1 (1%)
7	NAG	A	304	1	14,14,15	0.44	0	15,19,21	1.64	1 (6%)
7	NAG	A	307	1	14,14,15	0.55	0	15,19,21	0.91	1 (6%)

In the following table, the Chirals column lists the number of chiral outliers, the number of chiral centers analysed, the number of these observed in the model and the number defined in the chemical component dictionary. Similar counts are reported in the Torsion and Rings columns. '-' means no outliers of that kind were identified.

Mol	Type	Chain	Res	Link	Chirals	Torsions	Rings
5	QUX	A	303	-	-	0/58/78/78	0/1/1/1

Continued on next page...

Continued from previous page...

Mol	Type	Chain	Res	Link	Chirals	Torsions	Rings
7	NAG	A	304	1	-	0/6/23/26	0/1/1/1
7	NAG	A	307	1	-	0/6/23/26	0/1/1/1

There are no bond length outliers.

All (3) bond angle outliers are listed below:

Mol	Chain	Res	Type	Atoms	Z	Observed(°)	Ideal(°)
5	A	303	QUX	CAL-CAM-NBF	-2.46	106.91	110.41
7	A	307	NAG	C1-O5-C5	2.02	114.81	112.25
7	A	304	NAG	C1-O5-C5	5.28	118.95	112.25

There are no chirality outliers.

There are no torsion outliers.

There are no ring outliers.

1 monomer is involved in 2 short contacts:

Mol	Chain	Res	Type	Clashes	Symm-Clashes
5	A	303	QUX	2	0

5.7 Other polymers [i](#)

There are no such residues in this entry.

5.8 Polymer linkage issues [i](#)

There are no chain breaks in this entry.

6 Fit of model and data [i](#)

6.1 Protein, DNA and RNA chains [i](#)

In the following table, the column labelled ‘#RSRZ> 2’ contains the number (and percentage) of RSRZ outliers, followed by percent RSRZ outliers for the chain as percentile scores relative to all X-ray entries and entries of similar resolution. The OWAB column contains the minimum, median, 95th percentile and maximum values of the occupancy-weighted average B-factor per residue. The column labelled ‘Q< 0.9’ lists the number of (and percentage) of residues with an average occupancy less than 0.9.

Mol	Chain	Analysed	<RSRZ>	#RSRZ>2	OWAB(Å ²)	Q<0.9
1	A	293/302 (97%)	-0.33	1 (0%) 94 93	57, 80, 102, 127	1 (0%)
2	B	98/99 (98%)	-0.23	1 (1%) 84 75	55, 77, 99, 108	0
3	C	203/207 (98%)	-0.25	0 100 100	53, 80, 109, 118	1 (0%)
4	D	235/244 (96%)	-0.19	1 (0%) 93 90	58, 82, 117, 138	0
All	All	829/852 (97%)	-0.26	3 (0%) 93 90	53, 80, 109, 138	2 (0%)

All (3) RSRZ outliers are listed below:

Mol	Chain	Res	Type	RSRZ
1	A	275	ILE	2.6
4	D	126	PRO	2.6
2	B	36	GLU	2.3

6.2 Non-standard residues in protein, DNA, RNA chains [i](#)

There are no non-standard protein/DNA/RNA residues in this entry.

6.3 Carbohydrates [i](#)

In the following table, the Atoms column lists the number of modelled atoms in the group and the number defined in the chemical component dictionary. LLDF column lists the quality of electron density of the group with respect to its neighbouring residues in protein, DNA or RNA chains. The B-factors column lists the minimum, median, 95th percentile and maximum values of B factors of atoms in the group. The column labelled ‘Q< 0.9’ lists the number of atoms with occupancy less than 0.9.

Mol	Type	Chain	Res	Atoms	RSCC	RSR	LLDF	B-factors(Å ²)	Q<0.9
6	NAG	A	305	14/15	0.95	0.13	-	102,106,110,112	0
6	NAG	A	306	14/15	0.81	0.23	-	112,117,123,128	0

6.4 Ligands [i](#)

In the following table, the Atoms column lists the number of modelled atoms in the group and the number defined in the chemical component dictionary. LLDF column lists the quality of electron density of the group with respect to its neighbouring residues in protein, DNA or RNA chains. The B-factors column lists the minimum, median, 95th percentile and maximum values of B factors of atoms in the group. The column labelled 'Q< 0.9' lists the number of atoms with occupancy less than 0.9.

Mol	Type	Chain	Res	Atoms	RSCC	RSR	LLDF	B-factors(Å ²)	Q<0.9
5	QUX	A	303	60/60	0.92	0.31	1.78	69,75,82,85	13
7	NAG	A	304	14/15	0.88	0.17	-	77,80,83,83	0
7	NAG	A	307	14/15	0.86	0.26	-	97,104,111,112	0

6.5 Other polymers [i](#)

There are no such residues in this entry.