



Full wwPDB X-ray Structure Validation Report ⓘ

Feb 1, 2016 – 08:33 PM GMT

PDB ID : 4TQQ
Title : Photosynthetic Reaction Center from *R. sphaeroides* Analyzed at Room Temperature on an X-ray Transparent Microfluidic Chip
Authors : Schieferstein, J.M.; Khvostichenko, D.S.; Pawate, A.S.; Kenis, P.J.A.
Deposited on : 2014-06-11
Resolution : 2.50 Å(reported)

This is a Full wwPDB X-ray Structure Validation Report for a publicly released PDB entry.
We welcome your comments at validation@mail.wwpdb.org
A user guide is available at
<http://wwpdb.org/validation/2016/XrayValidationReportHelp>
with specific help available everywhere you see the ⓘ symbol.

The following versions of software and data (see [references ⓘ](#)) were used in the production of this report:

MolProbity : 4.02b-467
Mogul : 1.7 (RC4), CSD as536be (2015)
Xtriage (Phenix) : 1.9-1692
EDS : rb-20026688
Percentile statistics : 20151230.v01 (using entries in the PDB archive December 30th 2015)
Refmac : 5.8.0135
CCP4 : 6.5.0
Ideal geometry (proteins) : Engh & Huber (2001)
Ideal geometry (DNA, RNA) : Parkinson et al. (1996)
Validation Pipeline (wwPDB-VP) : trunk26865

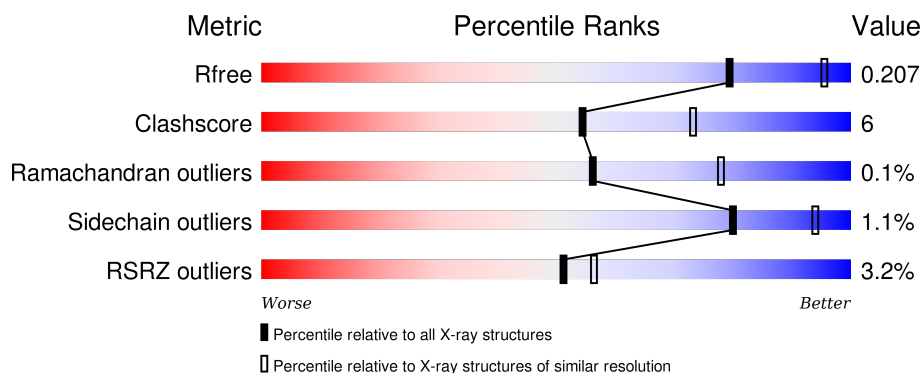
1 Overall quality at a glance

The following experimental techniques were used to determine the structure:

X-RAY DIFFRACTION

The reported resolution of this entry is 2.50 Å.

Percentile scores (ranging between 0-100) for global validation metrics of the entry are shown in the following graphic. The table shows the number of entries on which the scores are based.



Metric	Whole archive (#Entries)	Similar resolution (#Entries, resolution range(Å))
R_{free}	91344	3553 (2.50-2.50)
Clashscore	102246	4242 (2.50-2.50)
Ramachandran outliers	100387	4156 (2.50-2.50)
Sidechain outliers	100360	4158 (2.50-2.50)
RSRZ outliers	91569	3562 (2.50-2.50)

The table below summarises the geometric issues observed across the polymeric chains and their fit to the electron density. The red, orange, yellow and green segments on the lower bar indicate the fraction of residues that contain outliers for ≥ 3 , 2, 1 and 0 types of geometric quality criteria. A grey segment represents the fraction of residues that are not modelled. The numeric value for each fraction is indicated below the corresponding segment, with a dot representing fractions $\leq 5\%$. The upper red bar (where present) indicates the fraction of residues that have poor fit to the electron density. The numeric value is given above the bar.

Mol	Chain	Length	Quality of chain
1	H	240	<div> <div>3%</div> <div>85%</div> <div>14%</div> </div>
2	L	281	<div> <div>4%</div> <div>92%</div> <div>7%</div> </div>
3	M	302	<div> <div>2%</div> <div>91%</div> <div>8%</div> </div>

The following table lists non-polymeric compounds, carbohydrate monomers and non-standard residues in protein, DNA, RNA chains that are outliers for geometric or electron-density-fit criteria:

Mol	Type	Chain	Res	Chirality	Geometry	Clashes	Electron density
6	UQ1	L	304	-	-	X	X
8	U10	M	401	-	-	-	X

2 Entry composition [i](#)

There are 9 unique types of molecules in this entry. The entry contains 7114 atoms, of which 0 are hydrogens and 0 are deuteriums.

In the tables below, the ZeroOcc column contains the number of atoms modelled with zero occupancy, the AltConf column contains the number of residues with at least one atom in alternate conformation and the Trace column contains the number of residues modelled with at most 2 atoms.

- Molecule 1 is a protein called Reaction center protein H chain.

Mol	Chain	Residues	Atoms					ZeroOcc	AltConf	Trace
1	H	240	Total	C	N	O	S	0	0	0
			1829	1169	314	337	9			

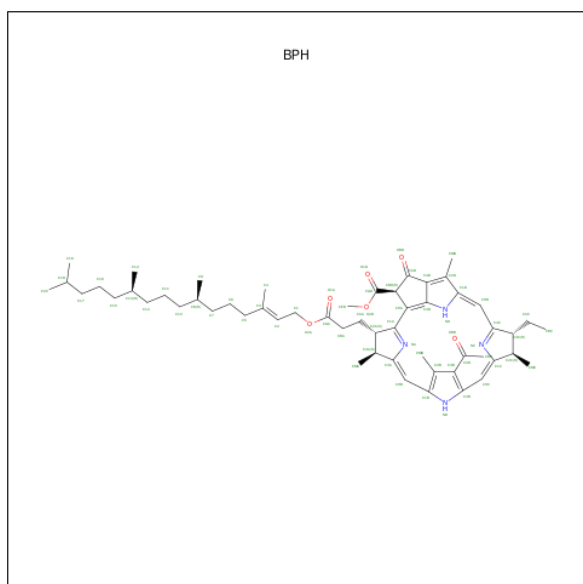
- Molecule 2 is a protein called Reaction center protein L chain.

Mol	Chain	Residues	Atoms					ZeroOcc	AltConf	Trace
2	L	281	Total	C	N	O	S	0	0	0
			2231	1507	355	361	8			

- Molecule 3 is a protein called Reaction center protein M chain.

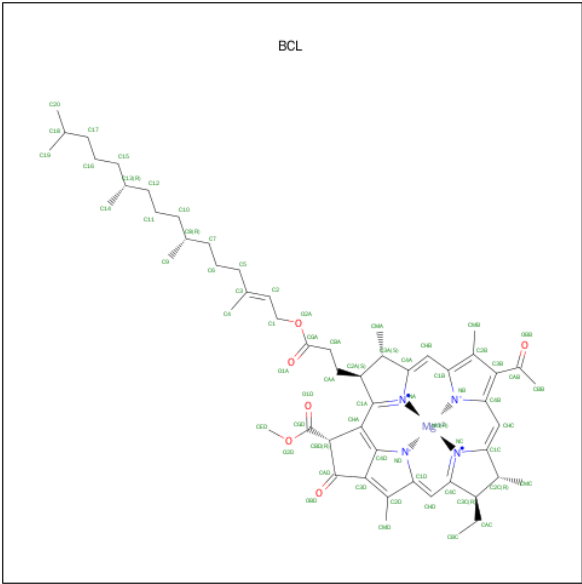
Mol	Chain	Residues	Atoms					ZeroOcc	AltConf	Trace
3	M	302	Total	C	N	O	S	0	0	0
			2408	1607	394	397	10			

- Molecule 4 is BACTERIOPHEOPHYTIN A (three-letter code: BPH) (formula: $C_{55}H_{76}N_4O_6$).



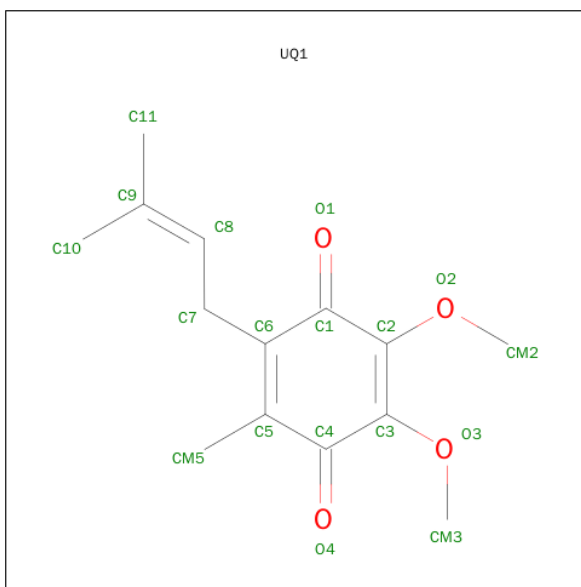
Mol	Chain	Residues	Atoms				ZeroOcc	AltConf
4	L	1	Total	C	N	O	0	0
			65	55	4	6		
4	M	1	Total	C	N	O	0	0
			65	55	4	6		

- Molecule 5 is BACTERIOCHLOROPHYLL A (three-letter code: BCL) (formula: C₅₅H₇₄MgN₄O₆).



Mol	Chain	Residues	Atoms				ZeroOcc	AltConf
5	L	1	Total	C	Mg	N	O	0
			66	55	1	4	6	
5	L	1	Total	C	Mg	N	O	0
			66	55	1	4	6	
5	M	1	Total	C	Mg	N	O	0
			66	55	1	4	6	
5	M	1	Total	C	Mg	N	O	0
			51	40	1	4	6	

- Molecule 6 is UBIQUINONE-1 (three-letter code: UQ1) (formula: C₁₄H₁₈O₄).

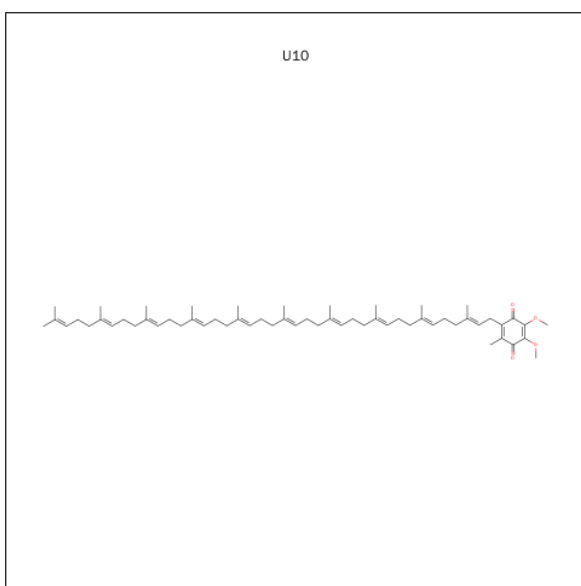


Mol	Chain	Residues	Atoms			ZeroOcc	AltConf
6	L	1	Total	C	O	0	0
			18	14	4		

- Molecule 7 is FE (II) ION (three-letter code: FE2) (formula: Fe).

Mol	Chain	Residues	Atoms		ZeroOcc	AltConf
7	L	1	Total	Fe	0	0
			1	1		

- Molecule 8 is UBIQUINONE-10 (three-letter code: U10) (formula: C₅₉H₉₀O₄).



Mol	Chain	Residues	Atoms			ZeroOcc	AltConf
8	M	1	Total	C	O	0	0
			62	58	4		

- Molecule 9 is water.

Mol	Chain	Residues	Atoms		ZeroOcc	AltConf
9	H	64	Total	O	0	0
			64	64		
9	L	53	Total	O	0	0
			53	53		
9	M	69	Total	O	0	0
			69	69		

4 Data and refinement statistics

Property	Value	Source
Space group	P 42 21 2	Depositor
Cell constants a, b, c, α , β , γ	102.48 Å 102.48 Å 239.94 Å 90.00° 90.00° 90.00°	Depositor
Resolution (Å)	42.81 – 2.50 42.81 – 2.50	Depositor EDS
% Data completeness (in resolution range)	95.8 (42.81-2.50) 94.7 (42.81-2.50)	Depositor EDS
R_{merge}	0.17	Depositor
R_{sym}	0.17	Depositor
$\langle I/\sigma(I) \rangle$ ¹	3.43 (at 2.51 Å)	Xtriage
Refinement program	PHENIX (phenix.refine: dev_1588)	Depositor
R, R_{free}	0.162 , 0.213 0.166 , 0.207	Depositor DCC
R_{free} test set	2000 reflections (4.89%)	DCC
Wilson B-factor (Å ²)	32.7	Xtriage
Anisotropy	0.048	Xtriage
Bulk solvent k_{sol} (e/Å ³), B_{sol} (Å ²)	0.33 , 63.1	EDS
Estimated twinning fraction	No twinning to report.	Xtriage
L-test for twinning ²	$\langle L \rangle = 0.49$, $\langle L^2 \rangle = 0.32$	Xtriage
Outliers	1 of 44687 reflections (0.002%)	Xtriage
F_o, F_c correlation	0.95	EDS
Total number of atoms	7114	wwPDB-VP
Average B, all atoms (Å ²)	35.0	wwPDB-VP

Xtriage's analysis on translational NCS is as follows: *The largest off-origin peak in the Patterson function is 2.87% of the height of the origin peak. No significant pseudotranslation is detected.*

¹Intensities estimated from amplitudes.

²Theoretical values of $\langle |L| \rangle$, $\langle L^2 \rangle$ for acentric reflections are 0.5, 0.375 respectively for untwinned datasets, and 0.333, 0.2 for perfectly twinned datasets.

5 Model quality

5.1 Standard geometry

Bond lengths and bond angles in the following residue types are not validated in this section: BCL, BPH, UQ1, FE2, U10

The Z score for a bond length (or angle) is the number of standard deviations the observed value is removed from the expected value. A bond length (or angle) with $|Z| > 5$ is considered an outlier worth inspection. RMSZ is the root-mean-square of all Z scores of the bond lengths (or angles).

Mol	Chain	Bond lengths		Bond angles	
		RMSZ	$\# Z > 5$	RMSZ	$\# Z > 5$
1	H	0.48	0/1877	0.73	2/2553 (0.1%)
2	L	0.46	0/2319	0.61	0/3175
3	M	0.53	2/2500 (0.1%)	0.65	1/3413 (0.0%)
All	All	0.49	2/6696 (0.0%)	0.66	3/9141 (0.0%)

Chiral center outliers are detected by calculating the chiral volume of a chiral center and verifying if the center is modelled as a planar moiety or with the opposite hand. A planarity outlier is detected by checking planarity of atoms in a peptide group, atoms in a mainchain group or atoms of a sidechain that are expected to be planar.

Mol	Chain	#Chirality outliers	#Planarity outliers
1	H	0	1

All (2) bond length outliers are listed below:

Mol	Chain	Res	Type	Atoms	Z	Observed(Å)	Ideal(Å)
3	M	134	TYR	CE1-CZ	-5.54	1.31	1.38
3	M	51	TYR	CE1-CZ	-5.49	1.31	1.38

All (3) bond angle outliers are listed below:

Mol	Chain	Res	Type	Atoms	Z	Observed(°)	Ideal(°)
1	H	94	GLU	CA-CB-CG	8.77	132.69	113.40
1	H	249	LYS	CA-CB-CG	6.32	127.30	113.40
3	M	198	TYR	CB-CG-CD2	-5.14	117.91	121.00

There are no chirality outliers.

All (1) planarity outliers are listed below:

Mol	Chain	Res	Type	Group
1	H	248	ARG	Peptide

5.2 Too-close contacts ⓘ

In the following table, the Non-H and H(model) columns list the number of non-hydrogen atoms and hydrogen atoms in the chain respectively. The H(added) column lists the number of hydrogen atoms added and optimized by MolProbity. The Clashes column lists the number of clashes within the asymmetric unit, whereas Symm-Clashes lists symmetry related clashes.

Mol	Chain	Non-H	H(model)	H(added)	Clashes	Symm-Clashes
1	H	1829	0	1836	20	0
2	L	2231	0	2187	27	0
3	M	2408	0	2321	25	0
4	L	65	0	76	4	0
4	M	65	0	76	6	0
5	L	132	0	148	2	0
5	M	117	0	115	4	0
6	L	18	0	18	13	0
7	L	1	0	0	0	0
8	M	62	0	84	6	0
9	H	64	0	0	3	0
9	L	53	0	0	0	0
9	M	69	0	0	4	0
All	All	7114	0	6861	88	0

The all-atom clashscore is defined as the number of clashes found per 1000 atoms (including hydrogen atoms). The all-atom clashscore for this structure is 6.

All (88) close contacts within the same asymmetric unit are listed below, sorted by their clash magnitude.

Atom-1	Atom-2	Interatomic distance (Å)	Clash overlap (Å)
3:M:136:ARG:NH1	9:M:548:HOH:O	2.08	0.84
8:M:401:U10:C46	8:M:401:U10:C45	2.58	0.81
8:M:401:U10:C46	8:M:401:U10:C43	2.59	0.81
8:M:401:U10:C45	8:M:401:U10:C43	2.59	0.80
2:L:190:HIS:HD1	6:L:304:UQ1:CM2	2.02	0.72
2:L:190:HIS:HD1	6:L:304:UQ1:HM21	1.56	0.70
2:L:224:ILE:H	6:L:304:UQ1:HM53	1.57	0.70
3:M:134:TYR:HE1	3:M:144:LYS:HE2	1.58	0.68
3:M:108:PRO:HG2	3:M:111:GLU:HB2	1.75	0.67
3:M:52:LEU:O	9:M:510:HOH:O	2.15	0.64

Continued on next page...

Continued from previous page...

Atom-1	Atom-2	Interatomic distance (Å)	Clash overlap (Å)
3:M:28:ASN:HB2	3:M:51:TYR:CE1	2.33	0.64
4:L:301:BPH:HBB3	4:L:301:BPH:HHC	1.77	0.64
4:L:301:BPH:HBB2	3:M:210:TYR:HB3	1.82	0.62
1:H:211:ASP:OD2	1:H:247:LYS:NZ	2.33	0.60
3:M:63:GLY:HA3	4:M:404:BPH:H5C2	1.84	0.59
2:L:52:SER:HB2	2:L:85:LEU:HD13	1.84	0.58
1:H:45:GLU:HG3	1:H:94:GLU:OE1	2.03	0.58
1:H:34:GLU:OE2	9:H:313:HOH:O	2.17	0.57
1:H:122:GLU:HB2	1:H:227:LEU:HD21	1.87	0.57
1:H:34:GLU:HG3	9:H:313:HOH:O	2.04	0.56
3:M:67:PHE:CE1	4:M:404:BPH:H18	2.40	0.56
3:M:67:PHE:HB2	4:M:404:BPH:H101	1.90	0.54
4:L:301:BPH:HHC	4:L:301:BPH:CBB	2.38	0.53
4:M:404:BPH:HBC3	4:M:404:BPH:HHD	1.91	0.53
2:L:269:LEU:HB3	2:L:270:PRO:HD2	1.93	0.51
2:L:164:TYR:N	2:L:164:TYR:CD1	2.80	0.50
5:L:302:BCL:HBB2	5:L:302:BCL:HMB1	1.93	0.49
3:M:136:ARG:NH1	9:M:510:HOH:O	2.40	0.49
1:H:245:ALA:N	1:H:246:PRO:HD2	2.28	0.49
2:L:193:LEU:HD23	6:L:304:UQ1:HM22	1.95	0.49
5:M:403:BCL:HBB3	5:M:403:BCL:HMB1	1.94	0.49
1:H:34:GLU:OE2	9:H:335:HOH:O	2.20	0.48
2:L:269:LEU:HB3	2:L:270:PRO:CD	2.43	0.48
3:M:144:LYS:N	3:M:144:LYS:HD2	2.28	0.48
3:M:164:ARG:HH12	3:M:173:GLU:HG3	1.78	0.48
2:L:223:SER:HA	6:L:304:UQ1:HM52	1.96	0.48
2:L:190:HIS:HA	6:L:304:UQ1:HM23	1.94	0.48
1:H:87:LEU:HD23	1:H:100:PRO:HA	1.94	0.48
2:L:207:ARG:HD2	2:L:211:HIS:CD2	2.49	0.48
6:L:304:UQ1:O1	6:L:304:UQ1:HM23	2.14	0.48
2:L:173:HIS:CE1	2:L:177:ILE:HD11	2.49	0.48
6:L:304:UQ1:HM51	6:L:304:UQ1:H72	1.66	0.47
1:H:112:ALA:HA	1:H:235:GLY:O	2.15	0.47
1:H:147:ASN:OD1	1:H:149:ILE:HG12	2.14	0.47
3:M:243:THR:O	3:M:247:ARG:HG3	2.14	0.47
3:M:136:ARG:CZ	9:M:548:HOH:O	2.60	0.46
8:M:401:U10:H521	8:M:401:U10:H501	1.65	0.46
3:M:66:TRP:CD1	3:M:122:MET:HB2	2.50	0.46
2:L:67:TYR:HB3	2:L:68:PRO:HD2	1.98	0.46
2:L:204:LYS:HD2	2:L:207:ARG:HH22	1.81	0.46
5:L:303:BCL:HMB1	5:L:303:BCL:HBB3	1.97	0.46

Continued on next page...

Continued from previous page...

Atom-1	Atom-2	Interatomic distance (Å)	Clash overlap (Å)
2:L:190:HIS:ND1	6:L:304:UQ1:HM21	2.27	0.45
3:M:67:PHE:CD1	4:M:404:BPH:H121	2.51	0.45
2:L:135:ARG:HB3	2:L:136:PRO:HD3	1.99	0.45
1:H:196:VAL:HG12	1:H:205:VAL:HG22	1.98	0.45
4:L:301:BPH:H161	4:L:301:BPH:H141	1.79	0.45
3:M:187:ASN:HA	5:M:402:BCL:CBC	2.47	0.45
3:M:1:ALA:O	3:M:3:TYR:N	2.49	0.44
3:M:134:TYR:CE1	3:M:144:LYS:HG2	2.52	0.44
2:L:256:PHE:N	2:L:256:PHE:CD1	2.86	0.44
3:M:78:ALA:HB2	3:M:92:PHE:CZ	2.53	0.44
1:H:156:CYS:HB2	1:H:248:ARG:HG3	2.00	0.43
8:M:401:U10:H422	8:M:401:U10:H401	1.53	0.43
1:H:135:LYS:HG2	1:H:166:ASP:OD2	2.18	0.43
1:H:138:ALA:HA	1:H:139:GLY:HA2	1.58	0.43
8:M:401:U10:H272	8:M:401:U10:H251	1.72	0.43
5:M:402:BCL:H2	4:M:404:BPH:HHC	2.00	0.43
1:H:168:TRP:HB2	1:H:178:PHE:HB2	2.00	0.43
2:L:223:SER:OG	6:L:304:UQ1:O4	2.27	0.43
1:H:18:TYR:O	1:H:22:ILE:HG12	2.19	0.42
1:H:29:TYR:O	1:H:33:THR:HG23	2.20	0.42
1:H:220:LYS:HG2	1:H:229:GLU:OE2	2.20	0.42
3:M:164:ARG:NH1	3:M:173:GLU:HG3	2.34	0.42
2:L:224:ILE:HG22	6:L:304:UQ1:C4	2.50	0.41
2:L:219:LEU:HD11	3:M:133:THR:HG22	2.01	0.41
2:L:193:LEU:HD21	2:L:212:GLU:HB3	2.01	0.41
1:H:181:VAL:HG21	1:H:191:LEU:HD12	2.02	0.41
3:M:52:LEU:HA	3:M:52:LEU:HD23	1.89	0.41
2:L:224:ILE:HG22	6:L:304:UQ1:C5	2.50	0.41
5:M:402:BCL:HHC	5:M:402:BCL:OBB	2.21	0.41
3:M:74:PHE:CD1	3:M:92:PHE:HB3	2.56	0.41
2:L:264:GLN:C	2:L:266:TRP:N	2.74	0.41
2:L:193:LEU:HG	2:L:212:GLU:HG2	2.02	0.41
2:L:269:LEU:HD23	2:L:269:LEU:HA	1.89	0.40
1:H:148:PRO:HA	1:H:151:LEU:HD12	2.03	0.40
3:M:250:LEU:HA	3:M:250:LEU:HD23	1.87	0.40
2:L:264:GLN:C	2:L:266:TRP:H	2.23	0.40
2:L:193:LEU:CD2	6:L:304:UQ1:HM22	2.51	0.40

There are no symmetry-related clashes.

5.3 Torsion angles [i](#)

5.3.1 Protein backbone [i](#)

In the following table, the Percentiles column shows the percent Ramachandran outliers of the chain as a percentile score with respect to all X-ray entries followed by that with respect to entries of similar resolution.

The Analysed column shows the number of residues for which the backbone conformation was analysed, and the total number of residues.

Mol	Chain	Analysed	Favoured	Allowed	Outliers	Percentiles	
1	H	238/240 (99%)	235 (99%)	3 (1%)	0	100	100
2	L	279/281 (99%)	270 (97%)	9 (3%)	0	100	100
3	M	300/302 (99%)	288 (96%)	11 (4%)	1 (0%)	46	68
All	All	817/823 (99%)	793 (97%)	23 (3%)	1 (0%)	56	78

All (1) Ramachandran outliers are listed below:

Mol	Chain	Res	Type
3	M	3	TYR

5.3.2 Protein sidechains [i](#)

In the following table, the Percentiles column shows the percent sidechain outliers of the chain as a percentile score with respect to all X-ray entries followed by that with respect to entries of similar resolution.

The Analysed column shows the number of residues for which the sidechain conformation was analysed, and the total number of residues.

Mol	Chain	Analysed	Rotameric	Outliers	Percentiles	
1	H	195/195 (100%)	194 (100%)	1 (0%)	92	98
2	L	220/220 (100%)	217 (99%)	3 (1%)	74	91
3	M	236/236 (100%)	233 (99%)	3 (1%)	76	92
All	All	651/651 (100%)	644 (99%)	7 (1%)	80	94

All (7) residues with a non-rotameric sidechain are listed below:

Mol	Chain	Res	Type
1	H	249	LYS
2	L	67	TYR

Continued on next page...

Continued from previous page...

Mol	Chain	Res	Type
2	L	164	TYR
2	L	256	PHE
3	M	51	TYR
3	M	198	TYR
3	M	216	PHE

Some sidechains can be flipped to improve hydrogen bonding and reduce clashes. There are no such sidechains identified.

5.3.3 RNA [i](#)

There are no RNA molecules in this entry.

5.4 Non-standard residues in protein, DNA, RNA chains [i](#)

There are no non-standard protein/DNA/RNA residues in this entry.

5.5 Carbohydrates [i](#)

There are no carbohydrates in this entry.

5.6 Ligand geometry [i](#)

Of 9 ligands modelled in this entry, 1 is monoatomic - leaving 8 for Mogul analysis.

In the following table, the Counts columns list the number of bonds (or angles) for which Mogul statistics could be retrieved, the number of bonds (or angles) that are observed in the model and the number of bonds (or angles) that are defined in the chemical component dictionary. The Link column lists molecule types, if any, to which the group is linked. The Z score for a bond length (or angle) is the number of standard deviations the observed value is removed from the expected value. A bond length (or angle) with $|Z| > 2$ is considered an outlier worth inspection. RMSZ is the root-mean-square of all Z scores of the bond lengths (or angles).

Mol	Type	Chain	Res	Link	Bond lengths			Bond angles		
					Counts	RMSZ	$\# Z > 2$	Counts	RMSZ	$\# Z > 2$
4	BPH	L	301	-	64,70,70	0.99	3 (4%)	73,101,101	1.05	4 (5%)
5	BCL	L	302	-	53,74,74	0.69	1 (1%)	57,115,115	1.21	8 (14%)
5	BCL	L	303	-	53,74,74	0.66	0	57,115,115	1.40	10 (17%)
6	UQ1	L	304	-	18,18,18	1.86	5 (27%)	22,25,25	1.62	4 (18%)

Mol	Type	Chain	Res	Link	Bond lengths			Bond angles		
					Counts	RMSZ	# Z > 2	Counts	RMSZ	# Z > 2
8	U10	M	401	-	60,60,63	3.01	15 (25%)	71,74,79	1.88	20 (28%)
5	BCL	M	402	-	53,74,74	0.79	1 (1%)	57,115,115	1.40	9 (15%)
5	BCL	M	403	-	38,59,74	0.81	1 (2%)	40,97,115	1.37	7 (17%)
4	BPH	M	404	-	64,70,70	1.06	6 (9%)	73,101,101	1.50	8 (10%)

In the following table, the Chirals column lists the number of chiral outliers, the number of chiral centers analysed, the number of these observed in the model and the number defined in the chemical component dictionary. Similar counts are reported in the Torsion and Rings columns. '-' means no outliers of that kind were identified.

Mol	Type	Chain	Res	Link	Chirals	Torsions	Rings
4	BPH	L	301	-	-	0/54/105/105	0/1/6/6
5	BCL	L	302	-	-	0/37/137/137	0/0/9/9
5	BCL	L	303	-	-	0/37/137/137	0/0/9/9
6	UQ1	L	304	-	-	0/9/33/33	0/1/1/1
8	U10	M	401	-	-	0/57/81/87	0/1/1/1
5	BCL	M	402	-	-	0/37/137/137	0/0/9/9
5	BCL	M	403	-	-	0/19/119/137	0/0/9/9
4	BPH	M	404	-	-	0/54/105/105	0/1/6/6

All (32) bond length outliers are listed below:

Mol	Chain	Res	Type	Atoms	Z	Observed(Å)	Ideal(Å)
8	M	401	U10	O4-C4	-4.81	1.24	1.37
8	M	401	U10	O3-C3	-4.79	1.24	1.37
6	L	304	UQ1	C3-C4	-3.66	1.38	1.48
8	M	401	U10	C3-C2	-3.44	1.39	1.48
6	L	304	UQ1	O2-CM2	-3.37	1.37	1.45
8	M	401	U10	C4-C5	-3.09	1.40	1.48
4	L	301	BPH	C3D-CAD	-3.05	1.40	1.46
6	L	304	UQ1	C2-C1	-2.99	1.40	1.48
6	L	304	UQ1	C6-C1	-2.76	1.38	1.46
5	M	402	BCL	O1A-CGA	-2.69	1.14	1.22
6	L	304	UQ1	O3-CM3	-2.58	1.39	1.45
4	M	404	BPH	C1B-C2B	-2.41	1.40	1.45
4	L	301	BPH	O1A-CGA	-2.27	1.15	1.22
4	M	404	BPH	C3D-CAD	-2.25	1.42	1.46
5	M	403	BCL	O1A-CGA	-2.24	1.16	1.22
8	M	401	U10	C6-C5	-2.01	1.40	1.46
4	M	404	BPH	C16-C15	2.04	1.61	1.52
4	M	404	BPH	C4A-NA	2.06	1.39	1.34

Continued on next page...

Continued from previous page...

Mol	Chain	Res	Type	Atoms	Z	Observed(Å)	Ideal(Å)
4	L	301	BPH	C4A-NA	2.08	1.39	1.34
8	M	401	U10	C6-C1	2.18	1.40	1.35
5	L	302	BCL	OBD-CAD	2.43	1.26	1.22
4	M	404	BPH	OBD-CAD	2.64	1.26	1.22
4	M	404	BPH	CHC-C1C	2.69	1.41	1.36
8	M	401	U10	C53-C54	5.11	1.48	1.32
8	M	401	U10	C8-C9	7.10	1.46	1.33
8	M	401	U10	C23-C24	7.12	1.46	1.33
8	M	401	U10	C28-C29	7.21	1.47	1.33
8	M	401	U10	C18-C19	7.35	1.47	1.33
8	M	401	U10	C38-C39	7.43	1.47	1.33
8	M	401	U10	C48-C49	7.44	1.47	1.33
8	M	401	U10	C13-C14	7.48	1.47	1.33
8	M	401	U10	C33-C34	7.52	1.47	1.33

All (70) bond angle outliers are listed below:

Mol	Chain	Res	Type	Atoms	Z	Observed(°)	Ideal(°)
8	M	401	U10	C27-C28-C29	-4.42	118.15	127.76
5	L	303	BCL	C17-C16-C15	-4.20	92.15	112.99
8	M	401	U10	C22-C23-C24	-4.20	118.63	127.76
5	M	402	BCL	CMB-C2B-C1B	-4.04	121.69	128.36
8	M	401	U10	C17-C18-C19	-4.01	119.03	127.76
8	M	401	U10	C42-C41-C39	-3.71	108.23	114.43
5	M	403	BCL	CMB-C2B-C1B	-3.70	122.25	128.36
8	M	401	U10	C12-C13-C14	-3.64	119.85	127.76
5	M	402	BCL	OBD-CAD-CBD	-3.39	120.82	125.94
4	M	404	BPH	OBD-CAD-CBD	-3.32	120.92	125.94
5	L	302	BCL	CMB-C2B-C1B	-3.19	123.08	128.36
5	M	403	BCL	OBD-CAD-CBD	-3.18	121.13	125.94
6	L	304	UQ1	O1-C1-C6	-3.17	115.71	121.68
8	M	401	U10	C47-C48-C49	-3.16	120.91	127.77
4	L	301	BPH	C1C-NC-C4C	-3.15	107.21	110.44
5	L	303	BCL	CMB-C2B-C1B	-3.09	123.25	128.36
8	M	401	U10	C32-C33-C34	-3.04	121.16	127.76
5	L	302	BCL	OBD-CAD-CBD	-2.92	121.52	125.94
5	M	402	BCL	CHA-C1A-NA	-2.92	118.88	126.06
4	M	404	BPH	CAC-C3C-C2C	-2.78	107.15	114.13
4	L	301	BPH	OBD-CAD-CBD	-2.67	121.90	125.94
8	M	401	U10	C7-C8-C9	-2.67	122.18	126.70
5	L	303	BCL	OBD-CAD-CBD	-2.66	121.92	125.94
8	M	401	U10	C30-C29-C28	-2.65	118.31	123.50

Continued on next page...

Continued from previous page...

Mol	Chain	Res	Type	Atoms	Z	Observed(°)	Ideal(°)
5	L	302	BCL	CHA-C1A-NA	-2.64	119.56	126.06
5	L	303	BCL	CHA-C1A-NA	-2.50	119.90	126.06
5	L	302	BCL	O2D-CGD-O1D	-2.44	118.76	123.79
5	M	403	BCL	CHA-C1A-NA	-2.43	120.07	126.06
5	M	402	BCL	C16-C15-C13	-2.41	107.49	115.49
6	L	304	UQ1	C7-C8-C9	-2.31	118.27	127.16
8	M	401	U10	C20-C19-C18	-2.29	119.00	123.50
5	L	303	BCL	O2A-CGA-O1A	-2.19	117.84	123.49
5	M	402	BCL	OBb-CAB-CBB	-2.11	115.06	120.13
6	L	304	UQ1	CM5-C5-C6	-2.11	119.59	124.10
8	M	401	U10	C40-C39-C38	-2.10	119.38	123.50
5	L	303	BCL	OBb-CAB-CBB	-2.09	115.12	120.13
8	M	401	U10	C25-C24-C23	-2.08	119.41	123.50
5	M	403	BCL	O2D-CGD-CBD	2.02	114.07	111.30
5	L	302	BCL	CMD-C2D-C3D	2.06	129.12	125.09
8	M	401	U10	C40-C39-C41	2.11	118.62	115.41
8	M	401	U10	C15-C14-C16	2.12	118.64	115.41
5	M	402	BCL	CED-O2D-CGD	2.15	121.03	115.99
5	L	303	BCL	CMB-C2B-C3B	2.16	129.31	125.09
5	M	403	BCL	CMD-C2D-C3D	2.16	129.32	125.09
5	L	303	BCL	C1D-CHD-C4C	2.17	129.38	126.07
5	M	402	BCL	CMD-C2D-C3D	2.20	129.38	125.09
5	L	302	BCL	CMB-C2B-C3B	2.24	129.46	125.09
4	L	301	BPH	C17-C16-C15	2.30	124.40	112.99
5	L	303	BCL	CMD-C2D-C3D	2.48	129.93	125.09
5	M	403	BCL	C2A-C1A-CHA	2.56	128.60	123.89
5	L	302	BCL	C2A-C1A-CHA	2.61	128.69	123.89
5	M	402	BCL	C2A-C1A-CHA	2.67	128.79	123.89
5	M	403	BCL	CMB-C2B-C3B	2.75	130.47	125.09
5	L	302	BCL	O1D-CGD-CBD	2.76	128.58	124.62
5	L	303	BCL	C2A-C1A-CHA	2.77	128.98	123.89
4	L	301	BPH	C3C-C4C-NC	2.77	110.71	107.93
4	M	404	BPH	CAC-C3C-C4C	2.81	119.89	112.67
5	M	402	BCL	CMB-C2B-C3B	2.88	130.72	125.09
4	M	404	BPH	C17-C16-C15	2.89	127.34	112.99
8	M	401	U10	C35-C34-C36	2.90	119.84	115.41
8	M	401	U10	C25-C24-C26	2.92	119.86	115.41
4	M	404	BPH	C3C-C4C-NC	3.01	110.95	107.93
8	M	401	U10	C20-C19-C21	3.23	120.33	115.41
4	M	404	BPH	C6-C5-C3	3.30	119.72	112.48
8	M	401	U10	C50-C49-C51	3.32	120.48	115.41
8	M	401	U10	C30-C29-C31	3.34	120.50	115.41

Continued on next page...

Continued from previous page...

Mol	Chain	Res	Type	Atoms	Z	Observed(°)	Ideal(°)
8	M	401	U10	C10-C9-C11	3.60	120.91	115.41
6	L	304	UQ1	C8-C7-C6	4.22	124.32	111.64
4	M	404	BPH	C11-C10-C8	5.07	132.31	115.49
4	M	404	BPH	C16-C15-C13	5.30	133.07	115.49

There are no chirality outliers.

There are no torsion outliers.

There are no ring outliers.

8 monomers are involved in 34 short contacts:

Mol	Chain	Res	Type	Clashes	Symm-Clashes
4	L	301	BPH	4	0
5	L	302	BCL	1	0
5	L	303	BCL	1	0
6	L	304	UQ1	13	0
8	M	401	U10	6	0
5	M	402	BCL	3	0
5	M	403	BCL	1	0
4	M	404	BPH	6	0

5.7 Other polymers [i](#)

There are no such residues in this entry.

5.8 Polymer linkage issues [i](#)

There are no chain breaks in this entry.

6 Fit of model and data ⓘ

6.1 Protein, DNA and RNA chains ⓘ

In the following table, the column labelled ‘#RSRZ> 2’ contains the number (and percentage) of RSRZ outliers, followed by percent RSRZ outliers for the chain as percentile scores relative to all X-ray entries and entries of similar resolution. The OWAB column contains the minimum, median, 95th percentile and maximum values of the occupancy-weighted average B-factor per residue. The column labelled ‘Q< 0.9’ lists the number of (and percentage) of residues with an average occupancy less than 0.9.

Mol	Chain	Analysed	<RSRZ>	#RSRZ>2	OWAB(Å ²)	Q<0.9
1	H	240/240 (100%)	-0.34	8 (3%) 50 55	22, 35, 57, 134	0
2	L	281/281 (100%)	-0.37	11 (3%) 43 48	19, 30, 66, 99	0
3	M	302/302 (100%)	-0.36	7 (2%) 64 67	18, 32, 58, 123	0
All	All	823/823 (100%)	-0.36	26 (3%) 51 56	18, 32, 61, 134	0

All (26) RSRZ outliers are listed below:

Mol	Chain	Res	Type	RSRZ
1	H	250	SER	9.8
1	H	249	LYS	7.9
3	M	1	ALA	7.8
1	H	245	ALA	5.6
2	L	59	TRP	5.5
2	L	265	TRP	4.9
2	L	271	TRP	4.4
1	H	248	ARG	4.3
2	L	51	TRP	3.8
3	M	105	PHE	3.3
2	L	63	LEU	3.0
1	H	247	LYS	2.9
3	M	301	HIS	2.8
2	L	61	PRO	2.8
3	M	3	TYR	2.7
2	L	274	ASN	2.7
3	M	2	GLU	2.5
2	L	269	LEU	2.4
3	M	106	ALA	2.4
2	L	277	GLY	2.2
1	H	92	VAL	2.2
1	H	246	PRO	2.2
3	M	68	PHE	2.2

Continued on next page...

Continued from previous page...

Mol	Chain	Res	Type	RSRZ
2	L	270	PRO	2.1
1	H	18	TYR	2.1
2	L	54	VAL	2.0

6.2 Non-standard residues in protein, DNA, RNA chains [i](#)

There are no non-standard protein/DNA/RNA residues in this entry.

6.3 Carbohydrates [i](#)

There are no carbohydrates in this entry.

6.4 Ligands [i](#)

In the following table, the Atoms column lists the number of modelled atoms in the group and the number defined in the chemical component dictionary. LLDF column lists the quality of electron density of the group with respect to its neighbouring residues in protein, DNA or RNA chains. The B-factors column lists the minimum, median, 95th percentile and maximum values of B factors of atoms in the group. The column labelled 'Q< 0.9' lists the number of atoms with occupancy less than 0.9.

Mol	Type	Chain	Res	Atoms	RSCC	RSR	LLDF	B-factors(Å ²)	Q<0.9
6	UQ1	L	304	18/18	0.94	0.21	3.84	27,29,32,34	11
8	U10	M	401	62/63	0.89	0.23	3.08	17,44,85,94	14
4	BPH	M	404	65/65	0.95	0.17	1.26	19,27,97,129	0
4	BPH	L	301	65/65	0.97	0.15	1.01	15,22,35,40	7
5	BCL	M	403	51/66	0.97	0.13	0.56	18,26,38,45	0
5	BCL	L	302	66/66	0.98	0.13	0.46	18,24,45,55	13
5	BCL	M	402	66/66	0.97	0.12	0.32	19,25,44,63	0
5	BCL	L	303	66/66	0.97	0.12	0.29	20,25,37,54	0
7	FE2	L	305	1/1	1.00	0.13	-0.86	19,19,19,19	0

6.5 Other polymers [i](#)

There are no such residues in this entry.