



Full wwPDB X-ray Structure Validation Report ⓘ

Feb 1, 2016 – 01:25 PM GMT

PDB ID : 3TT1
Title : Crystal Structure of LeuT in the outward-open conformation in complex with Fab
Authors : Krishnamurthy, H.; Gouaux, E.
Deposited on : 2011-09-13
Resolution : 3.10 Å(reported)

This is a Full wwPDB X-ray Structure Validation Report for a publicly released PDB entry.
We welcome your comments at validation@mail.wwpdb.org
A user guide is available at
<http://wwpdb.org/validation/2016/XrayValidationReportHelp>
with specific help available everywhere you see the ⓘ symbol.

The following versions of software and data (see [references ⓘ](#)) were used in the production of this report:

MolProbity : 4.02b-467
Mogul : 1.7 (RC4), CSD as536be (2015)
Xtriage (Phenix) : 1.9-1692
EDS : rb-20026688
Percentile statistics : 20151230.v01 (using entries in the PDB archive December 30th 2015)
Refmac : 5.8.0135
CCP4 : 6.5.0
Ideal geometry (proteins) : Engh & Huber (2001)
Ideal geometry (DNA, RNA) : Parkinson et al. (1996)
Validation Pipeline (wwPDB-VP) : trunk26865

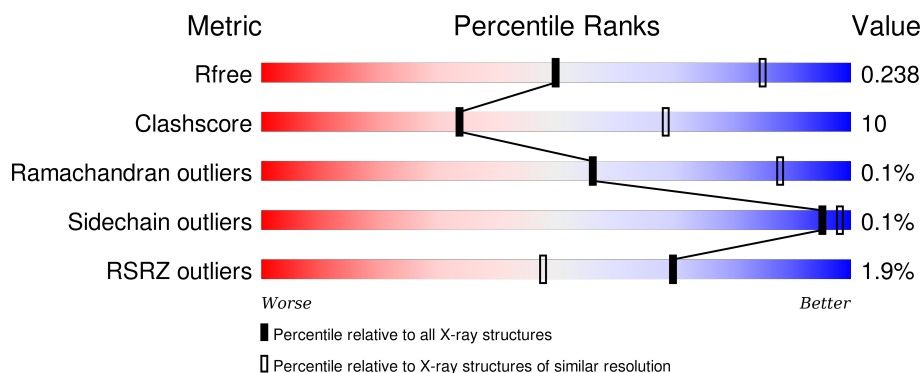
1 Overall quality at a glance

The following experimental techniques were used to determine the structure:

X-RAY DIFFRACTION

The reported resolution of this entry is 3.10 Å.

Percentile scores (ranging between 0-100) for global validation metrics of the entry are shown in the following graphic. The table shows the number of entries on which the scores are based.




Metric	Whole archive (#Entries)	Similar resolution (#Entries, resolution range(Å))
R_{free}	91344	1114 (3.14-3.06)
Clashscore	102246	1222 (3.14-3.06)
Ramachandran outliers	100387	1174 (3.14-3.06)
Sidechain outliers	100360	1174 (3.14-3.06)
RSRZ outliers	91569	1119 (3.14-3.06)

The table below summarises the geometric issues observed across the polymeric chains and their fit to the electron density. The red, orange, yellow and green segments on the lower bar indicate the fraction of residues that contain outliers for ≥ 3 , 2, 1 and 0 types of geometric quality criteria. A grey segment represents the fraction of residues that are not modelled. The numeric value for each fraction is indicated below the corresponding segment, with a dot representing fractions $\leq 5\%$. The upper red bar (where present) indicates the fraction of residues that have poor fit to the electron density. The numeric value is given above the bar.

Mol	Chain	Length	Quality of chain
1	A	519	<div> <div>2%</div> <div>76%</div> <div>20%</div> <div>.</div> </div>
1	B	519	<div> <div>3%</div> <div>77%</div> <div>19%</div> <div>.</div> </div>
2	L	218	<div> <div>2%</div> <div>83%</div> <div>16%</div> <div>.</div> </div>
2	M	218	<div> <div>2%</div> <div>82%</div> <div>17%</div> <div>.</div> </div>
3	H	219	<div> <div>73%</div> <div>24%</div> <div>.</div> </div>

Continued on next page...

Continued from previous page...

Mol	Chain	Length	Quality of chain
3	I	219	 <div>74% 22%</div>

The following table lists non-polymeric compounds, carbohydrate monomers and non-standard residues in protein, DNA, RNA chains that are outliers for geometric or electron-density-fit criteria:

Mol	Type	Chain	Res	Chirality	Geometry	Clashes	Electron density
4	NA	B	602	-	-	-	X
5	SOG	A	520	-	-	X	-
5	SOG	A	521	-	-	-	X
5	SOG	B	520	-	-	X	-

2 Entry composition [i](#)

There are 6 unique types of molecules in this entry. The entry contains 14274 atoms, of which 0 are hydrogens and 0 are deuteriums.

In the tables below, the ZeroOcc column contains the number of atoms modelled with zero occupancy, the AltConf column contains the number of residues with at least one atom in alternate conformation and the Trace column contains the number of residues modelled with at most 2 atoms.

- Molecule 1 is a protein called Leucine transporter LeuT.

Mol	Chain	Residues	Atoms					ZeroOcc	AltConf	Trace
1	A	498	Total	C	N	O	S	0	0	0
			3835	2605	595	623	12			
1	B	498	Total	C	N	O	S	0	0	0
			3835	2605	595	623	12			

There are 16 discrepancies between the modelled and reference sequences:

Chain	Residue	Modelled	Actual	Comment	Reference
A	108	PHE	TYR	ENGINEERED MUTATION	UNP O67854
A	288	ALA	LYS	ENGINEERED MUTATION	UNP O67854
A	514	GLY	-	EXPRESSION TAG	UNP O67854
A	515	THR	-	EXPRESSION TAG	UNP O67854
A	516	LEU	-	EXPRESSION TAG	UNP O67854
A	517	VAL	-	EXPRESSION TAG	UNP O67854
A	518	PRO	-	EXPRESSION TAG	UNP O67854
A	519	ARG	-	EXPRESSION TAG	UNP O67854
B	108	PHE	TYR	ENGINEERED MUTATION	UNP O67854
B	288	ALA	LYS	ENGINEERED MUTATION	UNP O67854
B	514	GLY	-	EXPRESSION TAG	UNP O67854
B	515	THR	-	EXPRESSION TAG	UNP O67854
B	516	LEU	-	EXPRESSION TAG	UNP O67854
B	517	VAL	-	EXPRESSION TAG	UNP O67854
B	518	PRO	-	EXPRESSION TAG	UNP O67854
B	519	ARG	-	EXPRESSION TAG	UNP O67854

- Molecule 2 is a protein called mouse monoclonal 1gG2a Fab fragment, heavy chain.

Mol	Chain	Residues	Atoms					ZeroOcc	AltConf	Trace
2	L	215	Total	C	N	O	S	0	0	0
			1656	1029	276	345	6			
2	M	215	Total	C	N	O	S	0	0	0
			1656	1029	276	345	6			

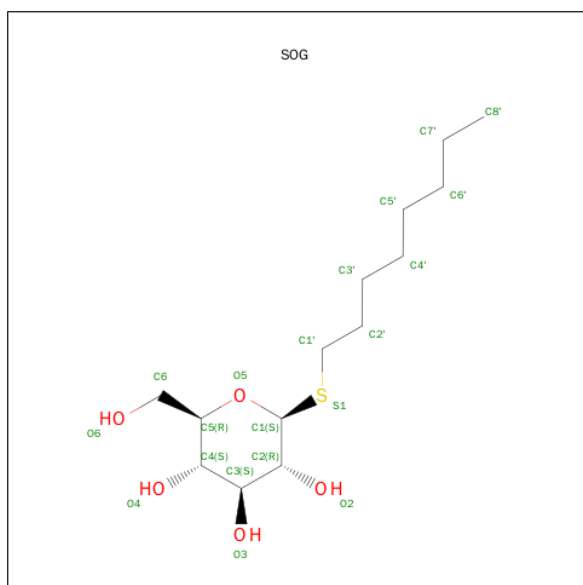
- Molecule 3 is a protein called mouse monoclonal 1gG2a Fab fragment, kappa light chain.

Mol	Chain	Residues	Atoms					ZeroOcc	AltConf	Trace
3	H	212	Total	C	N	O	S	0	0	0
			1598	1012	260	318	8			
3	I	212	Total	C	N	O	S	0	0	0
			1598	1012	260	318	8			

- Molecule 4 is SODIUM ION (three-letter code: NA) (formula: Na).

Mol	Chain	Residues	Atoms		ZeroOcc	AltConf
4	B	2	Total	Na	0	0
			2	2		
4	A	2	Total	Na	0	0
			2	2		

- Molecule 5 is SUGAR (2-HYDROXYMETHYL-6-OCTYLSULFANYL-TETRAHYDRO-PYRAN-3,4,5-TRIOL) (three-letter code: SOG) (formula: C₁₄H₂₈O₅S).



Mol	Chain	Residues	Atoms				ZeroOcc	AltConf
5	A	1	Total	C	O	S	0	0
			20	14	5	1		
5	A	1	Total	C			0	0
			8	8				
5	A	1	Total	C			0	0
			8	8				
5	B	1	Total	C	O	S	0	0
			20	14	5	1		

Continued on next page...

Continued from previous page...

Mol	Chain	Residues	Atoms	ZeroOcc	AltConf
5	B	1	Total C 8 8	0	0

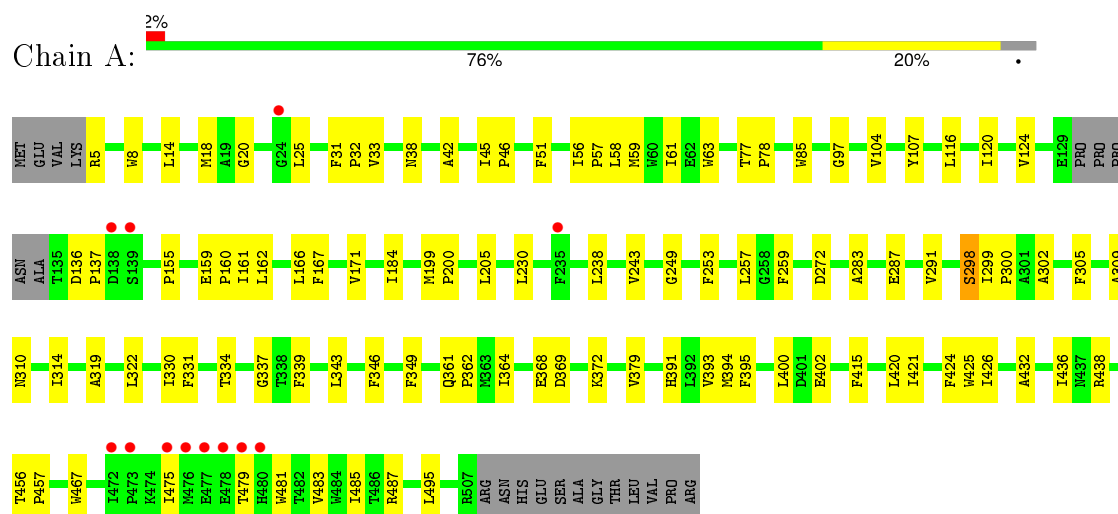
- Molecule 6 is water.

Mol	Chain	Residues	Atoms	ZeroOcc	AltConf
6	A	17	Total O 17 17	0	0
6	B	10	Total O 10 10	0	0
6	H	1	Total O 1 1	0	0

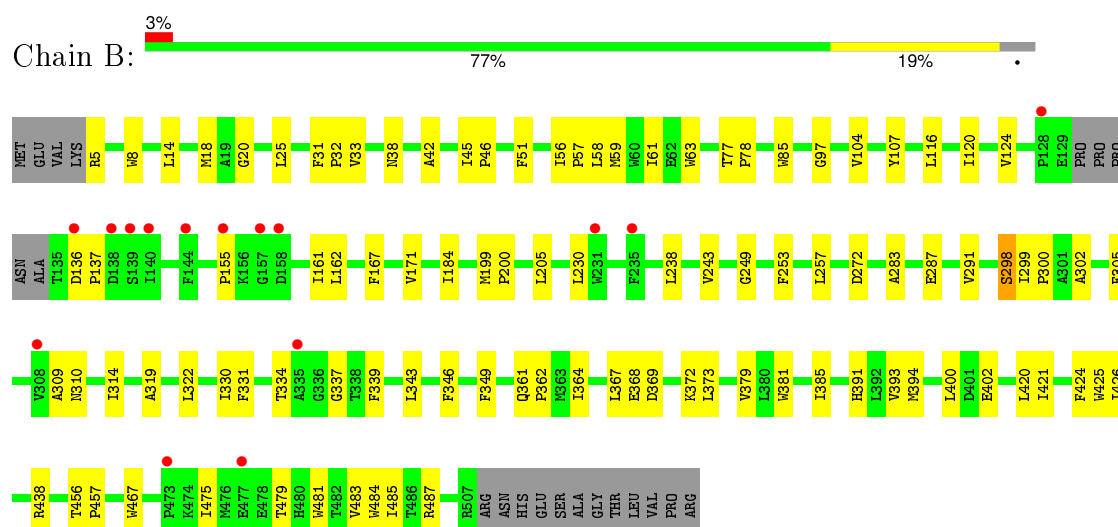
3 Residue-property plots [i](#)

These plots are drawn for all protein, RNA and DNA chains in the entry. The first graphic for a chain summarises the proportions of errors displayed in the second graphic. The second graphic shows the sequence view annotated by issues in geometry and electron density. Residues are color-coded according to the number of geometric quality criteria for which they contain at least one outlier: green = 0, yellow = 1, orange = 2 and red = 3 or more. A red dot above a residue indicates a poor fit to the electron density ($RSRZ > 2$). Stretches of 2 or more consecutive residues without any outlier are shown as a green connector. Residues present in the sample, but not in the model, are shown in grey.

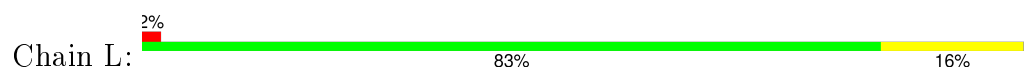
- Molecule 1: Leucine transporter LeuT

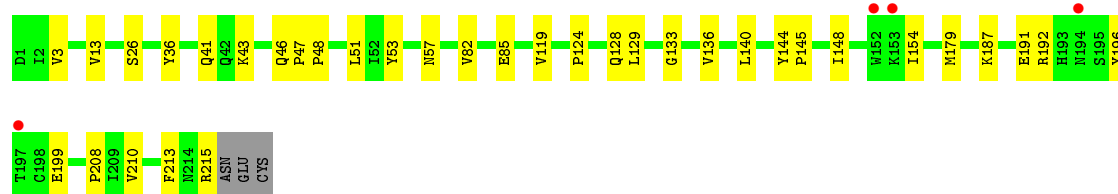


- Molecule 1: Leucine transporter LeuT

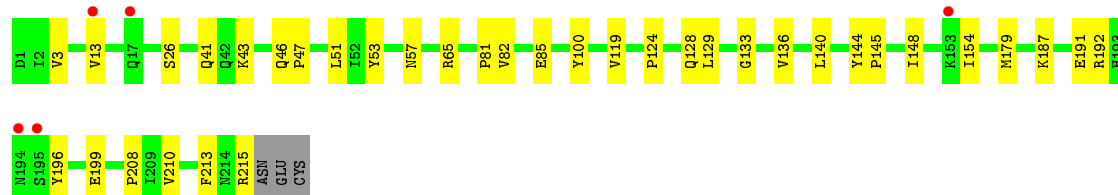
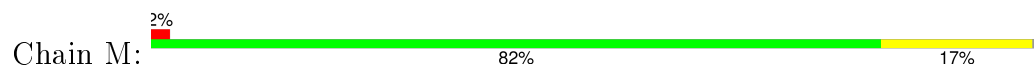


- Molecule 2: mouse monoclonal 1gG2a Fab fragment, heavy chain





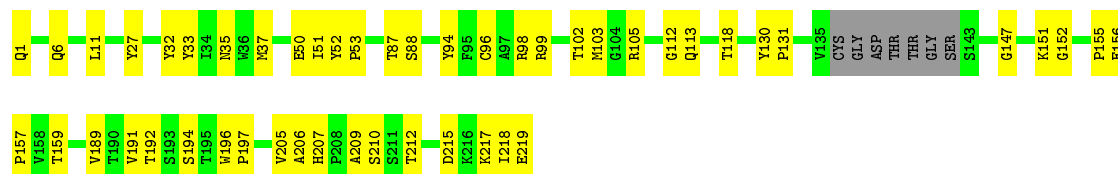
- Molecule 2: mouse monoclonal 1gG2a Fab fragment, heavy chain



- Molecule 3: mouse monoclonal 1gG2a Fab fragment, kappa light chain



- Molecule 3: mouse monoclonal 1gG2a Fab fragment, kappa light chain



4 Data and refinement statistics

Property	Value	Source
Space group	P 21 21 21	Depositor
Cell constants a, b, c, α , β , γ	102.86Å 162.76Å 210.08Å 90.00° 90.00° 90.00°	Depositor
Resolution (Å)	40.17 – 3.10 40.17 – 3.10	Depositor EDS
% Data completeness (in resolution range)	89.1 (40.17-3.10) 89.1 (40.17-3.10)	Depositor EDS
R_{merge}	0.11	Depositor
R_{sym}	(Not available)	Depositor
$\langle I/\sigma(I) \rangle$ ¹	2.10 (at 3.12Å)	Xtriage
Refinement program	PHENIX (phenix.refine: 1.7_650)	Depositor
R, R_{free}	0.219 , 0.240 0.219 , 0.238	Depositor DCC
R_{free} test set	2949 reflections (5.39%)	DCC
Wilson B-factor (Å ²)	75.0	Xtriage
Anisotropy	0.160	Xtriage
Bulk solvent k_{sol} (e/Å ³), B_{sol} (Å ²)	0.29 , 55.3	EDS
Estimated twinning fraction	No twinning to report.	Xtriage
L-test for twinning ²	$\langle L \rangle = 0.49$, $\langle L^2 \rangle = 0.32$	Xtriage
Outliers	1 of 57697 reflections (0.002%)	Xtriage
F_o, F_c correlation	0.92	EDS
Total number of atoms	14274	wwPDB-VP
Average B, all atoms (Å ²)	82.0	wwPDB-VP

Xtriage's analysis on translational NCS is as follows: *The largest off-origin peak in the Patterson function is 3.17% of the height of the origin peak. No significant pseudotranslation is detected.*

¹Intensities estimated from amplitudes.

²Theoretical values of $\langle |L| \rangle$, $\langle L^2 \rangle$ for acentric reflections are 0.5, 0.375 respectively for untwinned datasets, and 0.333, 0.2 for perfectly twinned datasets.

5 Model quality [i](#)

5.1 Standard geometry [i](#)

Bond lengths and bond angles in the following residue types are not validated in this section: NA, SOG

The Z score for a bond length (or angle) is the number of standard deviations the observed value is removed from the expected value. A bond length (or angle) with $|Z| > 5$ is considered an outlier worth inspection. RMSZ is the root-mean-square of all Z scores of the bond lengths (or angles).

Mol	Chain	Bond lengths		Bond angles	
		RMSZ	# Z >5	RMSZ	# Z >5
1	A	0.22	0/3956	0.35	0/5403
1	B	0.22	0/3956	0.35	0/5403
2	L	0.21	0/1694	0.39	0/2303
2	M	0.21	0/1694	0.39	0/2303
3	H	0.21	0/1636	0.40	0/2230
3	I	0.21	0/1636	0.40	0/2230
All	All	0.22	0/14572	0.37	0/19872

There are no bond length outliers.

There are no bond angle outliers.

There are no chirality outliers.

There are no planarity outliers.

5.2 Too-close contacts [i](#)

In the following table, the Non-H and H(model) columns list the number of non-hydrogen atoms and hydrogen atoms in the chain respectively. The H(added) column lists the number of hydrogen atoms added and optimized by MolProbity. The Clashes column lists the number of clashes within the asymmetric unit, whereas Symm-Clashes lists symmetry related clashes.

Mol	Chain	Non-H	H(model)	H(added)	Clashes	Symm-Clashes
1	A	3835	0	3813	75	0
1	B	3835	0	3813	71	0
2	L	1656	0	1567	23	0
2	M	1656	0	1567	24	0
3	H	1598	0	1550	45	0
3	I	1598	0	1550	49	0
4	A	2	0	0	0	0

Continued on next page...

Continued from previous page...

Mol	Chain	Non-H	H(model)	H(added)	Clashes	Symm-Clashes
4	B	2	0	0	0	0
5	A	36	0	58	13	0
5	B	28	0	42	25	0
6	A	17	0	0	2	0
6	B	10	0	0	0	0
6	H	1	0	0	0	0
All	All	14274	0	13960	287	0

The all-atom clashscore is defined as the number of clashes found per 1000 atoms (including hydrogen atoms). The all-atom clashscore for this structure is 10.

All (287) close contacts within the same asymmetric unit are listed below, sorted by their clash magnitude.

Atom-1	Atom-2	Interatomic distance (Å)	Clash overlap (Å)
5:B:520:SOG:C2	5:B:520:SOG:C3	1.81	1.56
5:A:520:SOG:H2'2	5:B:520:SOG:H3'1	1.33	1.08
3:I:218:ILE:HG22	3:I:219:GLU:H	1.34	0.91
3:H:218:ILE:HG22	3:H:219:GLU:H	1.34	0.90
5:A:520:SOG:H2'2	5:B:520:SOG:C3'	2.03	0.87
1:A:395:PHE:HZ	5:A:520:SOG:H1'1	1.44	0.83
5:B:520:SOG:C2	5:B:520:SOG:C4	2.52	0.83
5:B:520:SOG:O2	5:B:520:SOG:C3	2.30	0.80
1:A:395:PHE:CZ	5:A:520:SOG:H1'1	2.16	0.80
3:H:6:GLN:HE21	3:H:112:GLY:HA3	1.47	0.79
3:I:6:GLN:HE21	3:I:112:GLY:HA3	1.50	0.77
1:A:253:PHE:HE2	1:A:467:TRP:HH2	1.33	0.77
1:B:253:PHE:HE2	1:B:467:TRP:HH2	1.33	0.76
5:A:520:SOG:C2'	5:B:520:SOG:C3'	2.64	0.75
3:H:131:PRO:HA	3:H:217:LYS:HE3	1.70	0.74
3:I:131:PRO:HA	3:I:217:LYS:HE3	1.70	0.72
1:B:484:TRP:CE3	5:B:520:SOG:H5'1	2.25	0.72
1:B:302:ALA:HB1	1:B:314:ILE:HD13	1.72	0.71
1:B:479:THR:HB	1:B:483:VAL:HG21	1.72	0.71
1:A:479:THR:HB	1:A:483:VAL:HG21	1.72	0.71
5:B:520:SOG:O4	5:B:520:SOG:O2	2.01	0.70
3:H:11:LEU:HD22	3:H:155:PRO:HG3	1.72	0.70
5:A:520:SOG:O6	5:A:520:SOG:O3	2.09	0.70
3:H:6:GLN:H	3:H:113:GLN:HE22	1.40	0.70
1:A:302:ALA:HB1	1:A:314:ILE:HD13	1.73	0.70
1:B:45:ILE:HB	1:B:46:PRO:HD3	1.74	0.69
5:A:520:SOG:H1'2	5:B:520:SOG:H2'2	1.74	0.69

Continued on next page...

Continued from previous page...

Atom-1	Atom-2	Interatomic distance (Å)	Clash overlap (Å)
3:I:6:GLN:H	3:I:113:GLN:HE22	1.41	0.69
1:A:136:ASP:HB2	1:A:137:PRO:HD2	1.77	0.67
1:B:136:ASP:HB2	1:B:137:PRO:HD2	1.77	0.67
3:I:159:THR:HB	3:I:206:ALA:HB3	1.77	0.66
1:A:45:ILE:HB	1:A:46:PRO:HD3	1.76	0.66
3:H:159:THR:HB	3:H:206:ALA:HB3	1.79	0.65
5:B:520:SOG:HO2	5:B:520:SOG:HO4	1.30	0.64
5:A:520:SOG:H2'1	5:B:520:SOG:H3'2	1.79	0.64
5:B:520:SOG:O2	5:B:520:SOG:C4	2.47	0.63
2:M:199:GLU:HG2	2:M:208:PRO:HB2	1.81	0.63
3:I:11:LEU:HD22	3:I:155:PRO:HG3	1.81	0.62
2:L:41:GLN:HB2	2:L:51:LEU:HD11	1.81	0.62
2:M:46:GLN:HB2	2:M:47:PRO:HD2	1.80	0.62
2:L:124:PRO:HD3	2:L:136:VAL:HG22	1.82	0.62
2:M:124:PRO:HD3	2:M:136:VAL:HG22	1.81	0.62
1:B:309:ALA:O	1:B:310:ASN:HB2	1.98	0.62
2:L:46:GLN:HB2	2:L:47:PRO:HD2	1.80	0.62
2:M:41:GLN:HB2	2:M:51:LEU:HD11	1.80	0.61
2:L:199:GLU:HG2	2:L:208:PRO:HB2	1.81	0.61
1:B:484:TRP:CE3	5:B:520:SOG:C5'	2.82	0.61
1:A:309:ALA:O	1:A:310:ASN:HB2	2.01	0.61
3:I:218:ILE:HG22	3:I:219:GLU:N	2.13	0.60
1:B:18:MET:HG3	1:B:63:TRP:CZ2	2.37	0.60
1:A:438:ARG:HD3	3:I:52:TYR:CE1	2.37	0.60
5:B:520:SOG:HO2	5:B:520:SOG:C4	2.13	0.59
1:B:253:PHE:HE2	1:B:467:TRP:CH2	2.18	0.59
2:L:154:ILE:HD12	2:L:196:TYR:CD2	2.38	0.59
1:A:18:MET:HG3	1:A:63:TRP:CZ2	2.38	0.58
3:H:156:GLU:HG3	3:H:157:PRO:HA	1.84	0.58
2:M:154:ILE:HD12	2:M:196:TYR:CD2	2.37	0.58
5:A:520:SOG:C2'	5:B:520:SOG:H3'2	2.32	0.58
1:A:77:THR:OG1	1:A:97:GLY:HA3	2.03	0.58
1:B:364:ILE:HD13	1:B:379:VAL:HG22	1.85	0.58
3:I:27:TYR:CZ	3:I:98:ARG:HD3	2.39	0.57
1:A:364:ILE:HD13	1:A:379:VAL:HG22	1.85	0.57
2:L:53:TYR:O	2:L:57:ASN:HB2	2.04	0.57
3:H:27:TYR:CZ	3:H:98:ARG:HD3	2.39	0.57
2:M:53:TYR:O	2:M:57:ASN:HB2	2.05	0.57
1:B:77:THR:OG1	1:B:97:GLY:HA3	2.04	0.57
1:A:253:PHE:HE2	1:A:467:TRP:CH2	2.19	0.57
3:I:11:LEU:HD12	3:I:118:THR:O	2.06	0.56

Continued on next page...

Continued from previous page...

Atom-1	Atom-2	Interatomic distance (Å)	Clash overlap (Å)
2:M:100:TYR:HE2	3:I:99:ARG:HD3	1.71	0.56
3:H:218:ILE:HG22	3:H:219:GLU:N	2.13	0.56
2:M:128:GLN:HG2	2:M:133:GLY:O	2.06	0.56
1:A:58:LEU:HD23	1:A:257:LEU:HD13	1.88	0.56
3:H:207:HIS:NE2	3:H:209:ALA:HB3	2.21	0.56
1:A:438:ARG:HD3	3:I:52:TYR:CZ	2.41	0.55
2:M:213:PHE:HD1	2:M:215:ARG:H	1.54	0.55
1:A:104:VAL:HA	1:A:107:TYR:CE2	2.41	0.55
2:L:13:VAL:HG21	2:L:82:VAL:HG21	1.88	0.55
1:B:58:LEU:HD23	1:B:257:LEU:HD13	1.89	0.55
3:I:207:HIS:NE2	3:I:209:ALA:HB3	2.22	0.55
1:B:51:PHE:CZ	1:B:56:ILE:HD11	2.42	0.55
3:H:35:ASN:HB3	3:H:50:GLU:HB3	1.88	0.54
3:H:156:GLU:HG3	3:H:157:PRO:CA	2.37	0.54
1:A:51:PHE:CZ	1:A:56:ILE:HD11	2.43	0.54
2:L:128:GLN:HG2	2:L:133:GLY:O	2.06	0.54
2:M:13:VAL:HG21	2:M:82:VAL:HG21	1.90	0.54
1:B:438:ARG:HD3	3:H:52:TYR:CE1	2.43	0.54
3:I:35:ASN:HB3	3:I:50:GLU:HB3	1.88	0.54
1:B:331:PHE:O	1:B:337:GLY:HA3	2.08	0.54
2:L:213:PHE:HD1	2:L:215:ARG:H	1.54	0.54
1:B:104:VAL:HA	1:B:107:TYR:CE2	2.41	0.54
3:I:205:VAL:O	3:I:212:THR:HG23	2.08	0.53
2:M:43:LYS:HD2	2:M:46:GLN:NE2	2.23	0.53
1:A:56:ILE:N	1:A:57:PRO:HD2	2.23	0.53
3:I:156:GLU:HG3	3:I:157:PRO:HA	1.89	0.53
1:B:56:ILE:N	1:B:57:PRO:HD2	2.24	0.53
1:A:287:GLU:O	1:A:291:VAL:HG22	2.09	0.53
1:A:331:PHE:O	1:A:337:GLY:HA3	2.08	0.53
2:L:43:LYS:HD2	2:L:46:GLN:NE2	2.24	0.53
1:A:485:ILE:HD13	1:B:485:ILE:HD13	1.90	0.53
1:B:298:SER:HB3	1:B:322:LEU:HD21	1.90	0.52
3:H:218:ILE:CG2	3:H:219:GLU:H	2.17	0.52
3:H:205:VAL:O	3:H:212:THR:HG23	2.09	0.52
2:M:3:VAL:HG22	2:M:26:SER:HB3	1.91	0.52
1:A:298:SER:HB3	1:A:322:LEU:HD21	1.91	0.52
1:B:438:ARG:HD3	3:H:52:TYR:CZ	2.44	0.52
3:I:87:THR:HG22	3:I:88:SER:N	2.25	0.52
1:B:199:MET:HB2	1:B:200:PRO:HD3	1.92	0.52
1:B:155:PRO:HD3	1:B:162:LEU:HD23	1.92	0.51
1:A:230:LEU:HD11	1:A:299:ILE:HB	1.92	0.51

Continued on next page...

Continued from previous page...

Atom-1	Atom-2	Interatomic distance (Å)	Clash overlap (Å)
1:B:249:GLY:O	1:B:253:PHE:HD2	1.93	0.51
1:B:456:THR:N	1:B:457:PRO:HD2	2.26	0.51
1:A:25:LEU:H	1:A:25:LEU:HD12	1.75	0.51
1:B:287:GLU:O	1:B:291:VAL:HG22	2.10	0.51
1:A:456:THR:N	1:A:457:PRO:HD2	2.26	0.51
3:H:156:GLU:CG	3:H:157:PRO:HA	2.40	0.51
1:A:199:MET:HB2	1:A:200:PRO:HD3	1.92	0.51
1:B:438:ARG:HD2	3:H:33:TYR:OH	2.10	0.51
3:H:192:THR:HG22	3:H:194:SER:H	1.76	0.51
1:A:299:ILE:HB	1:A:300:PRO:HD3	1.92	0.50
1:A:438:ARG:HD2	3:I:33:TYR:OH	2.11	0.50
3:H:87:THR:HG22	3:H:88:SER:N	2.26	0.50
3:I:218:ILE:CG2	3:I:219:GLU:H	2.16	0.50
3:I:156:GLU:HG3	3:I:157:PRO:CA	2.42	0.50
1:A:495:LEU:HD22	5:A:521:SOG:H8'1	1.94	0.50
1:B:230:LEU:HD11	1:B:299:ILE:HB	1.92	0.50
3:H:11:LEU:HD12	3:H:118:THR:O	2.12	0.50
1:B:299:ILE:HB	1:B:300:PRO:HD3	1.93	0.50
2:M:100:TYR:HE2	3:I:99:ARG:CD	2.24	0.49
1:B:25:LEU:HD12	1:B:25:LEU:H	1.76	0.49
3:I:192:THR:HG22	3:I:194:SER:H	1.76	0.49
1:A:155:PRO:HD3	1:A:162:LEU:HD23	1.93	0.49
1:A:124:VAL:HG12	1:A:124:VAL:O	2.12	0.49
2:L:3:VAL:HG22	2:L:26:SER:HB3	1.93	0.49
1:A:249:GLY:O	1:A:253:PHE:HD2	1.94	0.49
2:L:128:GLN:HG3	3:H:130:TYR:CE2	2.48	0.49
2:M:140:LEU:HD22	2:M:179:MET:HE3	1.94	0.49
2:M:129:LEU:O	2:M:187:LYS:HD2	2.12	0.49
3:H:6:GLN:HE21	3:H:112:GLY:CA	2.21	0.49
1:B:59:MET:SD	1:B:283:ALA:HB2	2.53	0.49
5:A:520:SOG:C6	5:A:520:SOG:O3	2.56	0.49
1:B:484:TRP:CZ3	5:B:520:SOG:H4'1	2.47	0.49
3:I:103:MET:HA	3:I:105:ARG:H	1.77	0.49
2:L:129:LEU:O	2:L:187:LYS:HD2	2.13	0.49
1:A:402:GLU:CD	1:A:483:VAL:HG13	2.33	0.49
3:I:87:THR:HG22	3:I:88:SER:H	1.78	0.49
1:B:167:PHE:O	1:B:171:VAL:HG23	2.14	0.48
2:L:140:LEU:HD22	2:L:179:MET:HE3	1.95	0.48
1:A:167:PHE:O	1:A:171:VAL:HG23	2.13	0.48
1:A:59:MET:SD	1:A:283:ALA:HB2	2.53	0.48
1:B:124:VAL:HG12	1:B:124:VAL:O	2.12	0.48

Continued on next page...

Continued from previous page...

Atom-1	Atom-2	Interatomic distance (Å)	Clash overlap (Å)
2:L:199:GLU:HG3	2:L:210:VAL:HG22	1.95	0.48
3:I:156:GLU:CG	3:I:157:PRO:HA	2.43	0.48
1:B:402:GLU:CD	1:B:483:VAL:HG13	2.34	0.47
1:B:305:PHE:HZ	1:B:334:THR:CG2	2.28	0.47
3:H:87:THR:HG22	3:H:88:SER:H	1.79	0.47
1:B:475:ILE:HG22	1:B:487:ARG:HH21	1.79	0.47
1:B:5:ARG:HH22	1:B:369:ASP:CG	2.18	0.47
1:A:305:PHE:HZ	1:A:334:THR:CG2	2.27	0.47
3:H:151:LYS:HG2	3:H:152:GLY:N	2.29	0.47
3:H:191:VAL:HG12	3:H:192:THR:H	1.79	0.47
1:A:395:PHE:CD1	5:B:520:SOG:C6	2.97	0.47
3:H:196:TRP:CG	3:H:197:PRO:HA	2.50	0.47
3:I:196:TRP:CG	3:I:197:PRO:HA	2.50	0.47
3:H:6:GLN:NE2	3:H:96:CYS:H	2.12	0.47
3:I:51:ILE:O	3:I:53:PRO:HD3	2.15	0.47
1:A:38:ASN:HB3	1:A:243:VAL:HG13	1.97	0.47
3:H:51:ILE:O	3:H:53:PRO:HD3	2.14	0.47
1:B:484:TRP:CH2	5:B:520:SOG:H4'1	2.51	0.47
3:I:6:GLN:NE2	3:I:96:CYS:H	2.13	0.47
3:H:103:MET:HA	3:H:105:ARG:H	1.77	0.47
2:M:43:LYS:NZ	2:M:85:GLU:O	2.48	0.46
1:A:57:PRO:O	1:A:61:ILE:HG13	2.15	0.46
1:B:31:PHE:HB3	1:B:32:PRO:HD3	1.98	0.46
2:M:199:GLU:HG3	2:M:210:VAL:HG22	1.96	0.46
1:B:421:ILE:O	1:B:425:TRP:HB2	2.15	0.46
1:B:57:PRO:O	1:B:61:ILE:HG13	2.15	0.46
3:H:32:TYR:CE1	3:H:98:ARG:NH1	2.84	0.46
1:A:31:PHE:HB3	1:A:32:PRO:HD3	1.97	0.46
3:I:151:LYS:HG2	3:I:152:GLY:N	2.30	0.46
2:L:43:LYS:NZ	2:L:85:GLU:O	2.48	0.46
1:A:421:ILE:O	1:A:425:TRP:HB2	2.16	0.46
1:B:38:ASN:HB3	1:B:243:VAL:HG13	1.97	0.46
1:A:391:HIS:HA	1:A:394:MET:HE2	1.98	0.46
1:A:25:LEU:N	1:A:25:LEU:HD12	2.30	0.46
3:I:191:VAL:HG12	3:I:192:THR:H	1.80	0.45
3:I:1:GLN:CD	3:I:1:GLN:N	2.70	0.45
3:I:32:TYR:CE1	3:I:98:ARG:NH1	2.84	0.45
1:B:25:LEU:HD12	1:B:25:LEU:N	2.31	0.45
1:A:481:TRP:CZ3	1:B:161:ILE:HD11	2.51	0.45
1:A:475:ILE:HG22	1:A:487:ARG:HH21	1.81	0.45
3:H:207:HIS:HE2	3:H:209:ALA:HB3	1.82	0.45

Continued on next page...

Continued from previous page...

Atom-1	Atom-2	Interatomic distance (Å)	Clash overlap (Å)
1:A:5:ARG:HH22	1:A:369:ASP:CG	2.20	0.45
2:M:128:GLN:HG3	3:I:130:TYR:CE2	2.52	0.45
3:I:207:HIS:HE2	3:I:209:ALA:HB3	1.82	0.45
3:H:191:VAL:HG12	3:H:192:THR:N	2.32	0.45
2:L:48:PRO:HD2	3:H:111:TRP:CE3	2.52	0.45
1:A:159:GLU:HA	1:A:160:PRO:HD3	1.82	0.45
1:A:166:LEU:HB2	5:A:520:SOG:O3	2.17	0.44
2:M:119:VAL:HG22	2:M:140:LEU:HG	1.99	0.44
1:A:395:PHE:CD1	5:B:520:SOG:H62	2.52	0.44
1:B:481:TRP:HB2	5:B:521:SOG:H5'2	2.00	0.44
3:I:191:VAL:HG12	3:I:192:THR:N	2.33	0.44
2:L:36:TYR:CE2	3:H:106:TYR:CD2	3.06	0.43
5:A:520:SOG:O4	5:A:520:SOG:O2	2.12	0.43
2:L:119:VAL:HG22	2:L:140:LEU:HG	2.00	0.43
1:B:391:HIS:HA	1:B:394:MET:HE2	2.00	0.43
3:H:37:MET:O	3:H:94:TYR:HA	2.19	0.43
1:A:184:ILE:HA	1:A:379:VAL:HG21	2.01	0.43
1:B:184:ILE:HA	1:B:379:VAL:HG21	2.00	0.43
2:L:187:LYS:O	2:L:191:GLU:HG2	2.18	0.43
1:A:420:LEU:O	1:A:420:LEU:HD23	2.19	0.43
1:A:42:ALA:HB1	1:A:238:LEU:HD11	2.01	0.43
1:B:116:LEU:O	1:B:120:ILE:HG13	2.19	0.43
3:H:147:GLY:O	3:H:217:LYS:HE2	2.19	0.43
1:A:85:TRP:CG	1:A:426:ILE:HG21	2.54	0.42
1:A:259:PHE:HE2	6:A:608:HOH:O	2.01	0.42
1:B:85:TRP:CG	1:B:426:ILE:HG21	2.54	0.42
1:B:339:PHE:CE2	1:B:343:LEU:HD11	2.54	0.42
1:A:77:THR:N	1:A:78:PRO:CD	2.83	0.42
1:B:367:LEU:HB3	1:B:373:LEU:HD22	2.02	0.42
1:B:42:ALA:HB1	1:B:238:LEU:HD11	2.01	0.42
1:A:393:VAL:HG13	1:A:400:LEU:HB2	2.01	0.42
1:B:481:TRP:CB	5:B:521:SOG:H5'2	2.49	0.42
1:B:20:GLY:HA2	1:B:199:MET:SD	2.60	0.42
2:M:187:LYS:O	2:M:191:GLU:HG2	2.18	0.42
1:A:116:LEU:O	1:A:120:ILE:HG13	2.20	0.42
1:B:77:THR:N	1:B:78:PRO:CD	2.83	0.42
3:I:37:MET:O	3:I:94:TYR:HA	2.19	0.42
1:B:305:PHE:CE2	1:B:330:ILE:HG23	2.54	0.42
1:A:161:ILE:HD11	1:B:481:TRP:CE3	2.55	0.42
3:H:131:PRO:HG3	3:H:215:ASP:OD2	2.20	0.42
2:L:192:ARG:HG2	2:L:192:ARG:O	2.19	0.42

Continued on next page...

Continued from previous page...

Atom-1	Atom-2	Interatomic distance (Å)	Clash overlap (Å)
3:I:147:GLY:O	3:I:217:LYS:HE2	2.20	0.42
1:A:481:TRP:CE3	1:B:161:ILE:HD11	2.55	0.42
1:B:361:GLN:N	1:B:362:PRO:CD	2.83	0.42
1:B:393:VAL:HG13	1:B:400:LEU:HB2	2.01	0.42
1:A:432:ALA:O	1:A:436:ILE:HG13	2.20	0.42
3:I:6:GLN:HE21	3:I:112:GLY:CA	2.26	0.41
3:I:6:GLN:HE22	3:I:96:CYS:H	1.68	0.41
1:A:116:LEU:HB2	1:A:349:PHE:CD1	2.55	0.41
2:M:192:ARG:O	2:M:192:ARG:HG2	2.19	0.41
1:B:381:TRP:O	1:B:385:ILE:HG13	2.20	0.41
1:A:361:GLN:N	1:A:362:PRO:CD	2.83	0.41
2:L:140:LEU:HD23	2:L:148:ILE:HD11	2.02	0.41
3:H:102:THR:HG23	3:H:105:ARG:HG3	2.03	0.41
3:H:37:MET:HE3	3:H:108:MET:SD	2.61	0.41
2:M:144:TYR:HA	2:M:145:PRO:C	2.41	0.41
1:B:8:TRP:CD1	1:B:14:LEU:HD13	2.55	0.41
3:I:207:HIS:CD2	3:I:210:SER:OG	2.73	0.41
1:A:33:VAL:HG21	1:A:319:ALA:HA	2.03	0.41
1:A:339:PHE:CE2	1:A:343:LEU:HD11	2.55	0.41
3:I:130:TYR:HA	3:I:131:PRO:HD3	1.92	0.41
3:I:207:HIS:HD2	3:I:210:SER:OG	2.04	0.41
1:A:305:PHE:CE2	1:A:330:ILE:HG23	2.55	0.41
3:I:131:PRO:HG3	3:I:215:ASP:OD2	2.20	0.41
1:A:485:ILE:HD13	1:B:485:ILE:CD1	2.51	0.41
1:B:272:ASP:N	1:B:272:ASP:OD1	2.53	0.41
1:A:205:LEU:HD11	1:A:346:PHE:HD2	1.86	0.41
1:A:395:PHE:CD1	5:B:520:SOG:H61	2.55	0.41
3:H:207:HIS:CD2	3:H:210:SER:OG	2.74	0.41
3:H:105:ARG:HG3	3:H:105:ARG:O	2.21	0.41
3:I:1:GLN:H3	3:I:1:GLN:CD	2.24	0.41
1:B:116:LEU:HB2	1:B:349:PHE:CD1	2.56	0.41
1:A:395:PHE:HD1	5:B:520:SOG:H61	1.86	0.41
1:A:77:THR:HG21	1:A:415:PHE:HZ	1.86	0.41
3:I:50:GLU:CD	3:I:99:ARG:HH21	2.24	0.41
2:M:140:LEU:HD23	2:M:148:ILE:HD11	2.02	0.41
1:A:8:TRP:CD1	1:A:14:LEU:HD13	2.55	0.41
2:L:144:TYR:HA	2:L:145:PRO:C	2.40	0.41
3:H:189:VAL:HG13	3:H:189:VAL:O	2.21	0.41
1:B:484:TRP:CD1	5:B:521:SOG:H7'2	2.55	0.41
1:B:33:VAL:HG21	1:B:319:ALA:HA	2.03	0.41
1:B:205:LEU:HD11	1:B:346:PHE:HD2	1.86	0.41

Continued on next page...

Continued from previous page...

Atom-1	Atom-2	Interatomic distance (Å)	Clash overlap (Å)
1:B:420:LEU:HD23	1:B:420:LEU:O	2.21	0.40
3:I:189:VAL:HG13	3:I:189:VAL:O	2.21	0.40
3:H:154:PHE:HA	3:H:155:PRO:HA	1.80	0.40
3:I:105:ARG:O	3:I:105:ARG:HG3	2.21	0.40
2:M:65:ARG:HD2	2:M:81:PRO:O	2.21	0.40
3:I:219:GLU:HG2	3:I:219:GLU:OXT	2.21	0.40
1:A:253:PHE:HA	6:A:608:HOH:O	2.21	0.40
1:B:368:GLU:O	1:B:372:LYS:HA	2.22	0.40
5:B:520:SOG:H3'1	5:B:520:SOG:H6'2	1.66	0.40
1:A:20:GLY:HA2	1:A:199:MET:SD	2.61	0.40
3:I:102:THR:HG23	3:I:105:ARG:HG3	2.03	0.40
1:A:272:ASP:N	1:A:272:ASP:OD1	2.53	0.40
3:H:158:VAL:HG21	3:H:185:LEU:HD22	2.03	0.40
1:A:368:GLU:O	1:A:372:LYS:HA	2.21	0.40

There are no symmetry-related clashes.

5.3 Torsion angles [i](#)

5.3.1 Protein backbone [i](#)

In the following table, the Percentiles column shows the percent Ramachandran outliers of the chain as a percentile score with respect to all X-ray entries followed by that with respect to entries of similar resolution.

The Analysed column shows the number of residues for which the backbone conformation was analysed, and the total number of residues.

Mol	Chain	Analysed	Favoured	Allowed	Outliers	Percentiles	
1	A	494/519 (95%)	479 (97%)	14 (3%)	1 (0%)	52	84
1	B	494/519 (95%)	477 (97%)	16 (3%)	1 (0%)	52	84
2	L	213/218 (98%)	204 (96%)	9 (4%)	0	100	100
2	M	213/218 (98%)	205 (96%)	8 (4%)	0	100	100
3	H	208/219 (95%)	195 (94%)	13 (6%)	0	100	100
3	I	208/219 (95%)	196 (94%)	12 (6%)	0	100	100
All	All	1830/1912 (96%)	1756 (96%)	72 (4%)	2 (0%)	56	88

All (2) Ramachandran outliers are listed below:

Mol	Chain	Res	Type
1	A	298	SER
1	B	298	SER

5.3.2 Protein sidechains ⓘ

In the following table, the Percentiles column shows the percent sidechain outliers of the chain as a percentile score with respect to all X-ray entries followed by that with respect to entries of similar resolution.

The Analysed column shows the number of residues for which the sidechain conformation was analysed, and the total number of residues.

Mol	Chain	Analysed	Rotameric	Outliers	Percentiles	
1	A	370/419 (88%)	369 (100%)	1 (0%)	94	97
1	B	370/419 (88%)	369 (100%)	1 (0%)	94	97
2	L	187/190 (98%)	187 (100%)	0	100	100
2	M	187/190 (98%)	187 (100%)	0	100	100
3	H	176/185 (95%)	176 (100%)	0	100	100
3	I	176/185 (95%)	176 (100%)	0	100	100
All	All	1466/1588 (92%)	1464 (100%)	2 (0%)	95	98

All (2) residues with a non-rotameric sidechain are listed below:

Mol	Chain	Res	Type
1	A	424	PHE
1	B	424	PHE

Some sidechains can be flipped to improve hydrogen bonding and reduce clashes. All (15) such sidechains are listed below:

Mol	Chain	Res	Type
1	A	361	GLN
1	B	361	GLN
2	L	42	GLN
2	L	46	GLN
2	L	202	HIS
3	H	6	GLN
3	H	39	GLN
3	H	172	HIS
3	H	199	GLN
3	H	207	HIS

Continued on next page...

Continued from previous page...

Mol	Chain	Res	Type
2	M	46	GLN
2	M	202	HIS
3	I	6	GLN
3	I	199	GLN
3	I	207	HIS

5.3.3 RNA [i](#)

There are no RNA molecules in this entry.

5.4 Non-standard residues in protein, DNA, RNA chains [i](#)

There are no non-standard protein/DNA/RNA residues in this entry.

5.5 Carbohydrates [i](#)

There are no carbohydrates in this entry.

5.6 Ligand geometry [i](#)

Of 9 ligands modelled in this entry, 4 are monoatomic - leaving 5 for Mogul analysis.

In the following table, the Counts columns list the number of bonds (or angles) for which Mogul statistics could be retrieved, the number of bonds (or angles) that are observed in the model and the number of bonds (or angles) that are defined in the chemical component dictionary. The Link column lists molecule types, if any, to which the group is linked. The Z score for a bond length (or angle) is the number of standard deviations the observed value is removed from the expected value. A bond length (or angle) with $|Z| > 2$ is considered an outlier worth inspection. RMSZ is the root-mean-square of all Z scores of the bond lengths (or angles).

Mol	Type	Chain	Res	Link	Bond lengths			Bond angles		
					Counts	RMSZ	$\# Z > 2$	Counts	RMSZ	$\# Z > 2$
5	SOG	A	520	-	20,20,20	5.63	6 (30%)	23,25,25	7.51	14 (60%)
5	SOG	A	521	-	7,7,20	0.24	0	6,6,25	0.54	0
5	SOG	A	522	-	7,7,20	0.26	0	6,6,25	0.47	0
5	SOG	B	520	-	20,20,20	3.89	6 (30%)	23,25,25	9.02	10 (43%)
5	SOG	B	521	-	7,7,20	0.25	0	6,6,25	0.51	0

In the following table, the Chirals column lists the number of chiral outliers, the number of chiral centers analysed, the number of these observed in the model and the number defined in the chemical

component dictionary. Similar counts are reported in the Torsion and Rings columns. '-' means no outliers of that kind were identified.

Mol	Type	Chain	Res	Link	Chirals	Torsions	Rings
5	SOG	A	520	-	-	0/11/31/31	1/1/1/1
5	SOG	A	521	-	-	0/5/5/31	0/0/0/1
5	SOG	A	522	-	-	0/5/5/31	0/0/0/1
5	SOG	B	520	-	-	0/11/31/31	1/1/1/1
5	SOG	B	521	-	-	0/5/5/31	0/0/0/1

All (12) bond length outliers are listed below:

Mol	Chain	Res	Type	Atoms	Z	Observed(Å)	Ideal(Å)
5	A	520	SOG	O5-C1	-19.63	1.09	1.42
5	B	520	SOG	O5-C1	-11.07	1.23	1.42
5	A	520	SOG	C4-C3	-7.04	1.33	1.52
5	B	520	SOG	O5-C5	-6.13	1.29	1.44
5	B	520	SOG	O4-C4	-2.13	1.37	1.43
5	B	520	SOG	C1'-S1	2.07	1.84	1.81
5	B	520	SOG	C1-C2	2.14	1.57	1.53
5	A	520	SOG	C6-C5	2.21	1.59	1.51
5	A	520	SOG	C3-C2	6.29	1.68	1.52
5	A	520	SOG	C4-C5	6.98	1.67	1.53
5	A	520	SOG	C1-C2	9.87	1.72	1.53
5	B	520	SOG	C3-C2	11.12	1.81	1.52

All (24) bond angle outliers are listed below:

Mol	Chain	Res	Type	Atoms	Z	Observed(°)	Ideal(°)
5	A	520	SOG	O5-C1-C2	-24.78	76.54	110.19
5	B	520	SOG	O5-C1-C2	-20.25	82.69	110.19
5	A	520	SOG	O2-C2-C1	-15.90	79.49	110.43
5	B	520	SOG	O2-C2-C1	-11.08	88.88	110.43
5	A	520	SOG	C4-C3-C2	-10.27	91.63	110.79
5	B	520	SOG	O5-C1-S1	-10.14	83.82	109.85
5	A	520	SOG	C3-C4-C5	-9.86	93.00	110.20
5	B	520	SOG	O2-C2-C3	-9.53	88.89	110.34
5	B	520	SOG	O5-C5-C4	-8.38	93.94	109.68
5	B	520	SOG	C4-C3-C2	-7.01	97.71	110.79
5	A	520	SOG	C1-O5-C5	-5.13	102.95	112.74
5	B	520	SOG	C3-C4-C5	-2.12	106.50	110.20
5	A	520	SOG	O4-C4-C5	2.20	115.07	109.24
5	A	520	SOG	O5-C5-C4	2.55	114.48	109.68
5	A	520	SOG	C3'-C2'-C1'	2.57	123.82	113.18

Continued on next page...

Continued from previous page...

Mol	Chain	Res	Type	Atoms	Z	Observed(°)	Ideal(°)
5	A	520	SOG	O2-C2-C3	3.15	117.43	110.34
5	A	520	SOG	O3-C3-C4	3.47	118.14	110.34
5	A	520	SOG	C1-C2-C3	3.64	118.76	110.69
5	A	520	SOG	O5-C1-S1	5.13	123.03	109.85
5	B	520	SOG	C1-C2-C3	5.55	122.98	110.69
5	A	520	SOG	O5-C5-C6	5.63	120.59	106.36
5	A	520	SOG	C1'-S1-C1	9.20	112.99	100.30
5	B	520	SOG	O5-C5-C6	10.21	132.17	106.36
5	B	520	SOG	C1-O5-C5	29.57	169.13	112.74

There are no chirality outliers.

There are no torsion outliers.

All (2) ring outliers are listed below:

Mol	Chain	Res	Type	Atoms
5	A	520	SOG	C1-C2-C3-C4-C5-O5
5	B	520	SOG	C1-C2-C3-C4-C5-O5

4 monomers are involved in 32 short contacts:

Mol	Chain	Res	Type	Clashes	Symm-Clashes
5	A	520	SOG	12	0
5	A	521	SOG	1	0
5	B	520	SOG	22	0
5	B	521	SOG	3	0

5.7 Other polymers [i](#)

There are no such residues in this entry.

5.8 Polymer linkage issues [i](#)

There are no chain breaks in this entry.

6 Fit of model and data ⓘ

6.1 Protein, DNA and RNA chains ⓘ

In the following table, the column labelled ‘#RSRZ> 2’ contains the number (and percentage) of RSRZ outliers, followed by percent RSRZ outliers for the chain as percentile scores relative to all X-ray entries and entries of similar resolution. The OWAB column contains the minimum, median, 95th percentile and maximum values of the occupancy-weighted average B-factor per residue. The column labelled ‘Q< 0.9’ lists the number of (and percentage) of residues with an average occupancy less than 0.9.

Mol	Chain	Analysed	<RSRZ>	#RSRZ>2	OWAB(Å ²)	Q<0.9
1	A	498/519 (95%)	-0.17	12 (2%) 62 39	46, 71, 143, 194	0
1	B	498/519 (95%)	-0.29	15 (3%) 54 29	48, 72, 145, 197	0
2	L	215/218 (98%)	-0.18	4 (1%) 70 48	53, 79, 142, 189	0
2	M	215/218 (98%)	-0.14	5 (2%) 64 40	51, 80, 142, 187	0
3	H	212/219 (96%)	-0.35	0 100 100	46, 76, 106, 129	0
3	I	212/219 (96%)	-0.29	0 100 100	54, 78, 107, 128	0
All	All	1850/1912 (96%)	-0.23	36 (1%) 70 48	46, 75, 139, 197	0

All (36) RSRZ outliers are listed below:

Mol	Chain	Res	Type	RSRZ
1	A	479	THR	6.5
1	B	128	PRO	4.9
1	B	158	ASP	4.8
1	A	478	GLU	4.2
1	B	477	GLU	3.9
1	A	472	ILE	3.5
1	A	473	PRO	3.3
2	M	195	SER	3.3
2	M	194	ASN	3.2
1	A	476	MET	3.1
2	L	194	ASN	3.0
1	B	157	GLY	3.0
1	B	235	PHE	2.9
2	L	197	THR	2.8
1	B	144	PHE	2.8
1	A	235	PHE	2.8
1	B	473	PRO	2.6
1	A	477	GLU	2.6
1	B	138	ASP	2.5

Continued on next page...

Continued from previous page...

Mol	Chain	Res	Type	RSRZ
1	B	140	ILE	2.5
1	B	335	ALA	2.4
1	B	155	PRO	2.4
1	B	231	TRP	2.4
1	A	475	ILE	2.4
1	B	308	VAL	2.4
1	A	138	ASP	2.4
1	B	136	ASP	2.2
1	A	480	HIS	2.2
2	M	13	VAL	2.2
2	L	152	TRP	2.1
1	A	139	SER	2.1
2	L	153	LYS	2.1
1	B	139	SER	2.0
1	A	24	GLY	2.0
2	M	153	LYS	2.0
2	M	17	GLN	2.0

6.2 Non-standard residues in protein, DNA, RNA chains [i](#)

There are no non-standard protein/DNA/RNA residues in this entry.

6.3 Carbohydrates [i](#)

There are no carbohydrates in this entry.

6.4 Ligands [i](#)

In the following table, the Atoms column lists the number of modelled atoms in the group and the number defined in the chemical component dictionary. LLDF column lists the quality of electron density of the group with respect to its neighbouring residues in protein, DNA or RNA chains. The B-factors column lists the minimum, median, 95th percentile and maximum values of B factors of atoms in the group. The column labelled 'Q< 0.9' lists the number of atoms with occupancy less than 0.9.

Mol	Type	Chain	Res	Atoms	RSCC	RSR	LLDF	B-factors(Å ²)	Q<0.9
5	SOG	A	521	8/20	0.92	0.22	3.39	49,59,74,75	0
4	NA	B	602	1/1	0.84	0.38	2.63	122,122,122,122	0
5	SOG	B	520	20/20	0.86	0.33	1.93	56,106,142,154	0
4	NA	A	602	1/1	0.94	0.37	1.66	82,82,82,82	0

Continued on next page...

Continued from previous page...

Mol	Type	Chain	Res	Atoms	RSCC	RSR	LLDF	B-factors(\AA^2)	Q<0.9
5	SOG	B	521	8/20	0.90	0.24	1.65	51,59,64,64	0
4	NA	A	601	1/1	0.94	0.38	1.44	77,77,77,77	0
5	SOG	A	520	20/20	0.89	0.25	0.70	69,111,130,142	0
4	NA	B	601	1/1	0.09	0.24	0.47	89,89,89,89	0
5	SOG	A	522	8/20	0.64	0.29	-	93,105,110,113	0

6.5 Other polymers [i](#)

There are no such residues in this entry.