



Full wwPDB X-ray Structure Validation Report ⓘ

Mar 19, 2016 – 03:51 PM EDT

PDB ID : 4TTI
Title : Crystal structure of double mutant E. Coli purine nucleoside phosphorylase with 4 FMC molecules
Authors : Stefanic, Z.; Bzowska, A.
Deposited on : 2014-06-21
Resolution : 1.89 Å(reported)

This is a Full wwPDB X-ray Structure Validation Report for a publicly released PDB entry.
We welcome your comments at validation@mail.wwpdb.org
A user guide is available at
<http://wwpdb.org/validation/2016/XrayValidationReportHelp>
with specific help available everywhere you see the ⓘ symbol.

The following versions of software and data (see [references ⓘ](#)) were used in the production of this report:

MolProbity : 4.02b-467
Mogul : 1.7.1 (RC1), CSD as537be (2016)
Xtriage (Phenix) : 1.9-1692
EDS : rb-20027107
Percentile statistics : 20151230.v01 (using entries in the PDB archive December 30th 2015)
Refmac : 5.8.0122
CCP4 : 6.5.0
Ideal geometry (proteins) : Engh & Huber (2001)
Ideal geometry (DNA, RNA) : Parkinson et al. (1996)
Validation Pipeline (wwPDB-VP) : rb-20027107

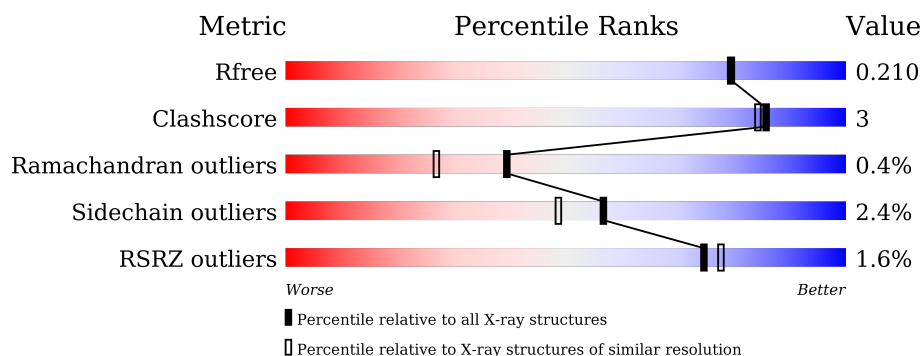
1 Overall quality at a glance

The following experimental techniques were used to determine the structure:

X-RAY DIFFRACTION

The reported resolution of this entry is 1.89 Å.

Percentile scores (ranging between 0-100) for global validation metrics of the entry are shown in the following graphic. The table shows the number of entries on which the scores are based.



Metric	Whole archive (#Entries)	Similar resolution (#Entries, resolution range(Å))
R_{free}	91344	4755 (1.90-1.90)
Clashscore	102246	5398 (1.90-1.90)
Ramachandran outliers	100387	5338 (1.90-1.90)
Sidechain outliers	100360	5339 (1.90-1.90)
RSRZ outliers	91569	4766 (1.90-1.90)

The table below summarises the geometric issues observed across the polymeric chains and their fit to the electron density. The red, orange, yellow and green segments on the lower bar indicate the fraction of residues that contain outliers for ≥ 3 , 2, 1 and 0 types of geometric quality criteria. A grey segment represents the fraction of residues that are not modelled. The numeric value for each fraction is indicated below the corresponding segment, with a dot representing fractions $\leq 5\%$. The upper red bar (where present) indicates the fraction of residues that have poor fit to the electron density. The numeric value is given above the bar.

Mol	Chain	Length	Quality of chain
1	A	237	<div> <div>95%</div> <div> <div></div> <div></div> <div></div> <div></div> </div> <div>.</div> </div>
1	B	237	<div> <div>2%</div> <div> <div></div> <div></div> <div></div> <div></div> </div> <div>90%</div> <div>9%</div> <div>.</div> </div>
1	C	237	<div> <div>3%</div> <div> <div></div> <div></div> <div></div> <div></div> </div> <div>85%</div> <div>8%</div> <div>5%</div> <div>.</div> </div>
1	D	237	<div> <div>3%</div> <div> <div></div> <div></div> <div></div> <div></div> </div> <div>96%</div> <div>.</div> <div>.</div> </div>
1	E	237	<div> <div>2%</div> <div> <div></div> <div></div> <div></div> <div></div> </div> <div>89%</div> <div>11%</div> </div>
1	F	237	<div> <div>95%</div> <div> <div></div> <div></div> <div></div> <div></div> </div> <div>5%</div> </div>

The following table lists non-polymeric compounds, carbohydrate monomers and non-standard residues in protein, DNA, RNA chains that are outliers for geometric or electron-density-fit criteria:

Mol	Type	Chain	Res	Chirality	Geometry	Clashes	Electron density
2	FMC	A	300	-	-	-	X
2	FMC	C	301	-	-	-	X
2	FMC	D	302	-	-	-	X
2	FMC	F	301	-	-	-	X
3	PO4	A	301	-	-	-	X

2 Entry composition

There are 5 unique types of molecules in this entry. The entry contains 12099 atoms, of which 0 are hydrogens and 0 are deuteriums.

In the tables below, the ZeroOcc column contains the number of atoms modelled with zero occupancy, the AltConf column contains the number of residues with at least one atom in alternate conformation and the Trace column contains the number of residues modelled with at most 2 atoms.

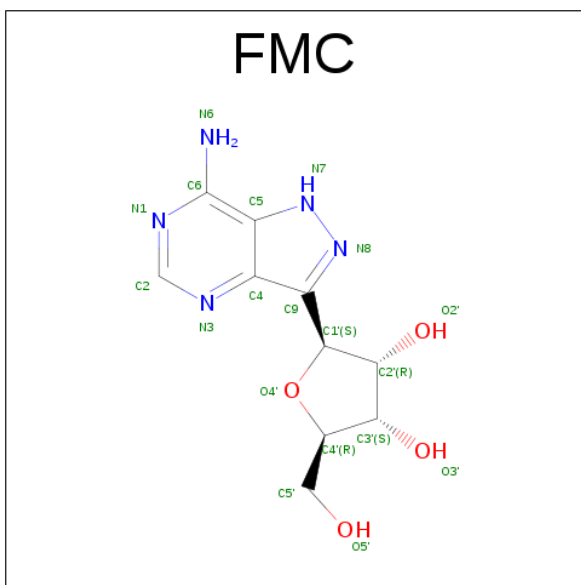
- Molecule 1 is a protein called Purine nucleoside phosphorylase DeoD-type.

Mol	Chain	Residues	Atoms					ZeroOcc	AltConf	Trace
1	A	237	Total	C	N	O	S	0	3	0
			1809	1145	311	337	16			
1	B	237	Total	C	N	O	S	0	3	0
			1805	1144	308	337	16			
1	C	224	Total	C	N	O	S	0	3	0
			1701	1082	286	317	16			
1	D	237	Total	C	N	O	S	0	1	0
			1793	1134	307	337	15			
1	E	237	Total	C	N	O	S	0	1	0
			1793	1135	305	337	16			
1	F	237	Total	C	N	O	S	0	4	0
			1820	1151	317	337	15			

There are 12 discrepancies between the modelled and reference sequences:

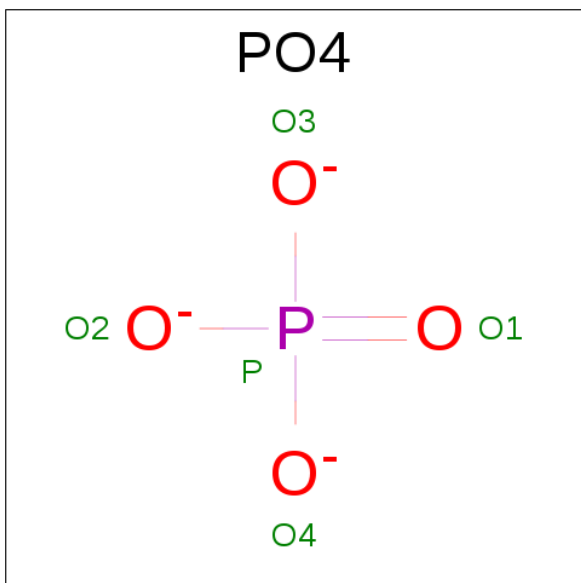
Chain	Residue	Modelled	Actual	Comment	Reference
A	204	ALA	ASP	engineered mutation	UNP C9QST6
A	217	ALA	ARG	engineered mutation	UNP C9QST6
B	204	ALA	ASP	engineered mutation	UNP C9QST6
B	217	ALA	ARG	engineered mutation	UNP C9QST6
C	204	ALA	ASP	engineered mutation	UNP C9QST6
C	217	ALA	ARG	engineered mutation	UNP C9QST6
D	204	ALA	ASP	engineered mutation	UNP C9QST6
D	217	ALA	ARG	engineered mutation	UNP C9QST6
E	204	ALA	ASP	engineered mutation	UNP C9QST6
E	217	ALA	ARG	engineered mutation	UNP C9QST6
F	204	ALA	ASP	engineered mutation	UNP C9QST6
F	217	ALA	ARG	engineered mutation	UNP C9QST6

- Molecule 2 is (1S)-1-(7-amino-1H-pyrazolo[4,3-d]pyrimidin-3-yl)-1,4-anhydro-D-ribitol (three-letter code: FMC) (formula: C₁₀H₁₃N₅O₄).



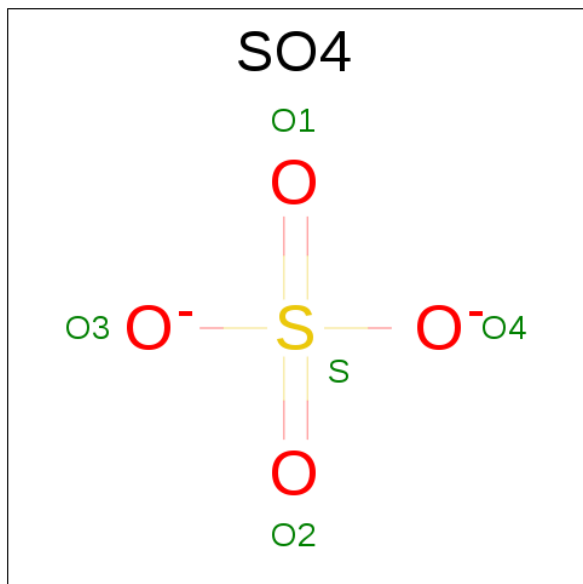
Mol	Chain	Residues	Atoms				ZeroOcc	AltConf
2	A	1	Total	C	N	O	0	0
			19	10	5	4		
2	C	1	Total	C	N	O	0	0
			19	10	5	4		
2	D	1	Total	C	N	O	0	0
			19	10	5	4		
2	F	1	Total	C	N	O	0	0
			19	10	5	4		

- Molecule 3 is PHOSPHATE ION (three-letter code: PO4) (formula: O₄P).



Mol	Chain	Residues	Atoms	ZeroOcc	AltConf
3	A	1	Total O P 5 4 1	0	0
3	B	1	Total O P 5 4 1	0	0
3	C	1	Total O P 5 4 1	0	0
3	D	1	Total O P 5 4 1	0	0
3	E	1	Total O P 5 4 1	0	0
3	F	1	Total O P 5 4 1	0	0

- Molecule 4 is SULFATE ION (three-letter code: SO4) (formula: O₄S).



Mol	Chain	Residues	Atoms	ZeroOcc	AltConf
4	C	1	Total O S 5 4 1	0	0
4	C	1	Total O S 5 4 1	0	0
4	D	1	Total O S 5 4 1	0	0
4	E	1	Total O S 5 4 1	0	0
4	F	1	Total O S 5 4 1	0	0

- Molecule 5 is water.

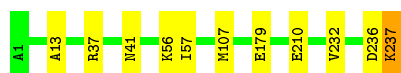
Mol	Chain	Residues	Atoms		ZeroOcc	AltConf
5	A	237	Total 237	O 237	0	0
5	B	183	Total 183	O 183	9	0
5	C	206	Total 206	O 206	0	0
5	D	192	Total 192	O 192	0	0
5	E	193	Total 193	O 193	6	0
5	F	236	Total 236	O 236	0	0

3 Residue-property plots [i](#)

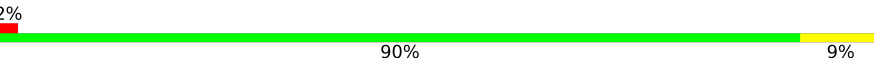
These plots are drawn for all protein, RNA and DNA chains in the entry. The first graphic for a chain summarises the proportions of errors displayed in the second graphic. The second graphic shows the sequence view annotated by issues in geometry and electron density. Residues are color-coded according to the number of geometric quality criteria for which they contain at least one outlier: green = 0, yellow = 1, orange = 2 and red = 3 or more. A red dot above a residue indicates a poor fit to the electron density ($RSRZ > 2$). Stretches of 2 or more consecutive residues without any outlier are shown as a green connector. Residues present in the sample, but not in the model, are shown in grey.

- Molecule 1: Purine nucleoside phosphorylase DeoD-type

Chain A:  95% .




- Molecule 1: Purine nucleoside phosphorylase DeoD-type

Chain B:  90% 9% .



- Molecule 1: Purine nucleoside phosphorylase DeoD-type

Chain C:  85% 8% . 5%



- Molecule 1: Purine nucleoside phosphorylase DeoD-type

Chain D:  96% . .



- Molecule 1: Purine nucleoside phosphorylase DeoD-type

Chain E:  89% 11%



- Molecule 1: Purine nucleoside phosphorylase DeoD-type

Chain F:  95% 5%



4 Data and refinement statistics

Property	Value	Source
Space group	P 21 21 21	Depositor
Cell constants a, b, c, α , β , γ	61.93Å 124.17Å 189.44Å 90.00° 90.00° 90.00°	Depositor
Resolution (Å)	47.70 – 1.89 47.83 – 1.89	Depositor EDS
% Data completeness (in resolution range)	98.8 (47.70-1.89) 98.8 (47.83-1.89)	Depositor EDS
R_{merge}	0.17	Depositor
R_{sym}	(Not available)	Depositor
$\langle I/\sigma(I) \rangle$ ¹	1.44 (at 1.90Å)	Xtriage
Refinement program	PHENIX (phenix.refine: 1.8.2_1309)	Depositor
R, R_{free}	0.167 , 0.210 0.165 , 0.210	Depositor DCC
R_{free} test set	5806 reflections (5.00%)	DCC
Wilson B-factor (Å ²)	17.7	Xtriage
Anisotropy	0.400	Xtriage
Bulk solvent k_{sol} (e/Å ³), B_{sol} (Å ²)	0.37 , 37.6	EDS
Estimated twinning fraction	No twinning to report.	Xtriage
L-test for twinning ²	$\langle L \rangle = 0.48$, $\langle L^2 \rangle = 0.31$	Xtriage
Outliers	0 of 116236 reflections	Xtriage
F_o, F_c correlation	0.96	EDS
Total number of atoms	12099	wwPDB-VP
Average B, all atoms (Å ²)	21.0	wwPDB-VP

Xtriage's analysis on translational NCS is as follows: *The largest off-origin peak in the Patterson function is 3.17% of the height of the origin peak. No significant pseudotranslation is detected.*

¹Intensities estimated from amplitudes.

²Theoretical values of $\langle |L| \rangle$, $\langle L^2 \rangle$ for acentric reflections are 0.5, 0.375 respectively for untwinned datasets, and 0.333, 0.2 for perfectly twinned datasets.

5 Model quality

5.1 Standard geometry

Bond lengths and bond angles in the following residue types are not validated in this section: PO4, SO4, FMC

The Z score for a bond length (or angle) is the number of standard deviations the observed value is removed from the expected value. A bond length (or angle) with $|Z| > 5$ is considered an outlier worth inspection. RMSZ is the root-mean-square of all Z scores of the bond lengths (or angles).

Mol	Chain	Bond lengths		Bond angles	
		RMSZ	$\# Z > 5$	RMSZ	$\# Z > 5$
1	A	0.37	0/1847	0.52	0/2488
1	B	0.37	0/1843	0.53	0/2484
1	C	0.36	0/1737	0.55	0/2339
1	D	0.36	0/1825	0.53	0/2461
1	E	0.36	0/1825	0.53	0/2460
1	F	0.41	1/1861 (0.1%)	0.53	0/2506
All	All	0.37	1/10938 (0.0%)	0.53	0/14738

Chiral center outliers are detected by calculating the chiral volume of a chiral center and verifying if the center is modelled as a planar moiety or with the opposite hand. A planarity outlier is detected by checking planarity of atoms in a peptide group, atoms in a mainchain group or atoms of a sidechain that are expected to be planar.

Mol	Chain	#Chirality outliers	#Planarity outliers
1	C	0	1

All (1) bond length outliers are listed below:

Mol	Chain	Res	Type	Atoms	Z	Observed(Å)	Ideal(Å)
1	F	216	GLU	CD-OE2	7.17	1.33	1.25

There are no bond angle outliers.

There are no chirality outliers.

All (1) planarity outliers are listed below:

Mol	Chain	Res	Type	Group
1	C	219	THR	Peptide

5.2 Too-close contacts ⓘ

In the following table, the Non-H and H(model) columns list the number of non-hydrogen atoms and hydrogen atoms in the chain respectively. The H(added) column lists the number of hydrogen atoms added and optimized by MolProbity. The Clashes column lists the number of clashes within the asymmetric unit, whereas Symm-Clashes lists symmetry related clashes.

Mol	Chain	Non-H	H(model)	H(added)	Clashes	Symm-Clashes
1	A	1809	0	1830	4	0
1	B	1805	0	1826	16	0
1	C	1701	0	1721	15	0
1	D	1793	0	1799	5	0
1	E	1793	0	1804	14	0
1	F	1820	0	1847	7	0
2	A	19	0	13	1	0
2	C	19	0	13	2	0
2	D	19	0	13	1	0
2	F	19	0	13	2	0
3	A	5	0	0	0	0
3	B	5	0	0	0	0
3	C	5	0	0	1	0
3	D	5	0	0	0	0
3	E	5	0	0	0	0
3	F	5	0	0	0	0
4	C	10	0	0	1	0
4	D	5	0	0	0	0
4	E	5	0	0	1	0
4	F	5	0	0	0	0
5	A	237	0	0	1	0
5	B	183	0	0	2	0
5	C	206	0	0	2	0
5	D	192	0	0	0	0
5	E	193	0	0	2	0
5	F	236	0	0	5	0
All	All	12099	0	10879	61	0

The all-atom clashscore is defined as the number of clashes found per 1000 atoms (including hydrogen atoms). The all-atom clashscore for this structure is 3.

All (61) close contacts within the same asymmetric unit are listed below, sorted by their clash magnitude.

Atom-1	Atom-2	Interatomic distance (Å)	Clash overlap (Å)
1:C:219:THR:HB	1:C:221:PHE:H	1.39	0.87

Continued on next page...

Continued from previous page...

Atom-1	Atom-2	Interatomic distance (Å)	Clash overlap (Å)
1:C:219:THR:HB	1:C:221:PHE:N	2.05	0.70
1:C:222:ASN:ND2	4:C:303:SO4:O2	2.23	0.68
1:C:219:THR:HA	1:C:220:THR:HB	1.79	0.64
1:C:237:LYS:O	5:C:557:HOH:O	2.15	0.63
1:E:95:LEU:HD23	1:E:171:GLU:HG3	1.81	0.62
1:E:35:ASP:O	5:E:549:HOH:O	2.17	0.59
1:F:30:GLU:OE1	5:F:401:HOH:O	2.17	0.59
2:D:302:FMC:H2'	2:D:302:FMC:N3	2.18	0.58
1:B:101:ARG:HB3	1:B:220:THR:HG21	1.85	0.58
1:B:117:ARG:NH2	1:D:122:ASP:O	2.35	0.57
1:B:30:GLU:OE1	5:B:401:HOH:O	2.17	0.56
1:F:37[B]:ARG:NH1	5:F:612:HOH:O	2.38	0.56
1:F:37[B]:ARG:NH1	5:F:616:HOH:O	2.40	0.55
2:A:300:FMC:H2'	2:A:300:FMC:N3	2.22	0.54
1:E:220:THR:HG21	4:E:302:SO4:O1	2.08	0.53
1:A:57:ILE:HD11	1:A:232:VAL:HG11	1.91	0.53
1:E:15:VAL:HG22	1:E:84:LYS:HB2	1.90	0.53
1:F:205:HIS:CE1	1:F:207:ARG:HB2	2.43	0.53
1:B:100:LEU:HA	1:B:202:VAL:HG22	1.90	0.53
1:C:97:HIS:O	1:C:149:ARG:NH1	2.41	0.53
2:C:301:FMC:N3	2:C:301:FMC:H2'	2.23	0.53
1:C:24:ARG:HD3	1:C:221:PHE:CE1	2.45	0.52
1:B:101:ARG:HE	1:B:220:THR:CG2	2.23	0.51
1:E:220:THR:HG23	1:E:223:ASP:H	1.75	0.51
1:B:114:LYS:HD3	1:E:114:LYS:HG3	1.93	0.51
1:E:13:ALA:HB2	1:E:56:LYS:HG2	1.92	0.50
1:A:236:ASP:O	1:A:237:LYS:HB2	2.11	0.49
1:A:13:ALA:HB2	1:A:56:LYS:HG2	1.95	0.49
2:F:301:FMC:N3	2:F:301:FMC:H2'	2.28	0.49
1:E:226:LYS:NZ	5:E:586:HOH:O	2.45	0.48
1:B:212:THR:OG1	1:B:216:GLU:HG3	2.13	0.48
1:F:149[A]:ARG:NE	5:F:566:HOH:O	2.47	0.48
1:C:62:HIS:CE1	1:C:181:GLU:HG2	2.48	0.48
1:E:220:THR:HG22	1:E:223:ASP:CG	2.34	0.47
5:B:405:HOH:O	1:D:172:LYS:HG3	2.13	0.47
1:E:220:THR:HG23	1:E:222:ASN:N	2.30	0.46
1:D:62:HIS:CE1	1:D:181:GLU:HG2	2.50	0.46
1:B:73:THR:HG22	1:B:85:ILE:HD13	1.97	0.46
1:C:29:ALA:HA	1:C:33:LEU:HD22	1.98	0.46
1:B:43:ARG:HA	1:E:21:ASP:OD1	2.16	0.45
1:E:220:THR:CG2	1:E:223:ASP:H	2.29	0.45

Continued on next page...

Continued from previous page...

Atom-1	Atom-2	Interatomic distance (Å)	Clash overlap (Å)
2:C:301:FMC:H1'	3:C:302:PO4:O2	2.17	0.45
2:F:301:FMC:N7	5:F:599:HOH:O	2.33	0.44
1:C:73:THR:HG22	1:C:85:ILE:HD13	1.99	0.44
1:D:172:LYS:HG2	1:D:173:TYR:CD1	2.53	0.44
1:E:76:LEU:HB3	1:E:82:VAL:HG21	1.99	0.43
1:B:107[A]:MET:HE2	1:B:107[A]:MET:HB2	1.84	0.43
1:C:173:TYR:CZ	1:E:119:ARG:HB3	2.52	0.43
1:B:212:THR:HG23	1:B:217:ALA:HB2	2.00	0.43
1:C:83:LYS:NZ	5:C:548:HOH:O	2.47	0.43
1:B:74:LYS:C	1:B:74:LYS:HD3	2.39	0.43
1:C:43:ARG:HA	1:F:21:ASP:OD1	2.20	0.42
1:A:41:ASN:OD1	5:A:583:HOH:O	2.22	0.42
1:C:90:SER:HB2	1:C:203:SER:HB3	2.02	0.42
1:B:101:ARG:HE	1:B:220:THR:HG21	1.84	0.42
1:C:142:LYS:HE3	1:C:142:LYS:HB2	1.85	0.41
1:B:105:ILE:HG23	1:B:197:LEU:HD11	2.02	0.41
1:B:95:LEU:HD23	1:B:171:GLU:HG3	2.03	0.41
1:F:62:HIS:CE1	1:F:181:GLU:HG2	2.55	0.41
1:B:128:ILE:HD12	1:D:107:MET:HE3	2.02	0.40

There are no symmetry-related clashes.

5.3 Torsion angles [i](#)

5.3.1 Protein backbone [i](#)

In the following table, the Percentiles column shows the percent Ramachandran outliers of the chain as a percentile score with respect to all X-ray entries followed by that with respect to entries of similar resolution.

The Analysed column shows the number of residues for which the backbone conformation was analysed, and the total number of residues.

Mol	Chain	Analysed	Favoured	Allowed	Outliers	Percentiles	
1	A	238/237 (100%)	232 (98%)	6 (2%)	0	100	100
1	B	238/237 (100%)	232 (98%)	6 (2%)	0	100	100
1	C	223/237 (94%)	216 (97%)	6 (3%)	1 (0%)	39	27
1	D	236/237 (100%)	225 (95%)	9 (4%)	2 (1%)	24	11
1	E	236/237 (100%)	225 (95%)	9 (4%)	2 (1%)	24	11

Continued on next page...

Continued from previous page...

Mol	Chain	Analysed	Favoured	Allowed	Outliers	Percentiles	
1	F	239/237 (101%)	232 (97%)	7 (3%)	0	100	100
All	All	1410/1422 (99%)	1362 (97%)	43 (3%)	5 (0%)	39	27

All (5) Ramachandran outliers are listed below:

Mol	Chain	Res	Type
1	D	209	HIS
1	D	215	ALA
1	E	212	THR
1	E	215	ALA
1	C	220	THR

5.3.2 Protein sidechains ⓘ

In the following table, the Percentiles column shows the percent sidechain outliers of the chain as a percentile score with respect to all X-ray entries followed by that with respect to entries of similar resolution.

The Analysed column shows the number of residues for which the sidechain conformation was analysed, and the total number of residues.

Mol	Chain	Analysed	Rotameric	Outliers	Percentiles	
1	A	189/186 (102%)	183 (97%)	6 (3%)	46	35
1	B	189/186 (102%)	183 (97%)	6 (3%)	46	35
1	C	179/186 (96%)	175 (98%)	4 (2%)	60	53
1	D	186/186 (100%)	183 (98%)	3 (2%)	70	66
1	E	187/186 (100%)	180 (96%)	7 (4%)	41	29
1	F	190/186 (102%)	188 (99%)	2 (1%)	80	79
All	All	1120/1116 (100%)	1092 (98%)	28 (2%)	57	47

All (28) residues with a non-rotameric sidechain are listed below:

Mol	Chain	Res	Type
1	A	37	ARG
1	A	107[A]	MET
1	A	107[B]	MET
1	A	179	GLU
1	A	210	GLU
1	A	237	LYS

Continued on next page...

Continued from previous page...

Mol	Chain	Res	Type
1	B	179	GLU
1	B	202	VAL
1	B	207	ARG
1	B	208	THR
1	B	211	GLN
1	B	212	THR
1	C	33	LEU
1	C	101	ARG
1	C	149	ARG
1	C	179	GLU
1	D	107	MET
1	D	179	GLU
1	D	209	HIS
1	E	23	LEU
1	E	34	GLU
1	E	37	ARG
1	E	100	LEU
1	E	120	PHE
1	E	179	GLU
1	E	210	GLU
1	F	55	ARG
1	F	179	GLU

Some sidechains can be flipped to improve hydrogen bonding and reduce clashes. All (1) such sidechains are listed below:

Mol	Chain	Res	Type
1	A	211	GLN

5.3.3 RNA ⓘ

There are no RNA molecules in this entry.

5.4 Non-standard residues in protein, DNA, RNA chains ⓘ

There are no non-standard protein/DNA/RNA residues in this entry.

5.5 Carbohydrates ⓘ

There are no carbohydrates in this entry.

5.6 Ligand geometry

15 ligands are modelled in this entry.

In the following table, the Counts columns list the number of bonds (or angles) for which Mogul statistics could be retrieved, the number of bonds (or angles) that are observed in the model and the number of bonds (or angles) that are defined in the chemical component dictionary. The Link column lists molecule types, if any, to which the group is linked. The Z score for a bond length (or angle) is the number of standard deviations the observed value is removed from the expected value. A bond length (or angle) with $|Z| > 2$ is considered an outlier worth inspection. RMSZ is the root-mean-square of all Z scores of the bond lengths (or angles).

Mol	Type	Chain	Res	Link	Bond lengths			Bond angles		
					Counts	RMSZ	$\# Z > 2$	Counts	RMSZ	$\# Z > 2$
2	FMC	A	300	-	20,21,21	1.31	2 (10%)	18,31,31	2.33	6 (33%)
3	PO4	A	301	-	4,4,4	1.01	0	6,6,6	0.26	0
3	PO4	B	301	-	4,4,4	0.61	0	6,6,6	0.24	0
2	FMC	C	301	-	20,21,21	1.23	2 (10%)	18,31,31	2.30	6 (33%)
3	PO4	C	302	-	4,4,4	0.70	0	6,6,6	0.23	0
4	SO4	C	303	-	4,4,4	0.32	0	6,6,6	0.16	0
4	SO4	C	304	-	4,4,4	0.27	0	6,6,6	0.08	0
3	PO4	D	301	-	4,4,4	0.72	0	6,6,6	0.23	0
2	FMC	D	302	-	20,21,21	1.34	3 (15%)	18,31,31	2.40	5 (27%)
4	SO4	D	303	-	4,4,4	0.33	0	6,6,6	0.13	0
3	PO4	E	301	-	4,4,4	0.69	0	6,6,6	0.24	0
4	SO4	E	302	-	4,4,4	0.29	0	6,6,6	0.31	0
2	FMC	F	301	-	20,21,21	1.30	2 (10%)	18,31,31	2.27	6 (33%)
3	PO4	F	302	-	4,4,4	0.93	0	6,6,6	0.22	0
4	SO4	F	303	-	4,4,4	0.30	0	6,6,6	0.18	0

In the following table, the Chirals column lists the number of chiral outliers, the number of chiral centers analysed, the number of these observed in the model and the number defined in the chemical component dictionary. Similar counts are reported in the Torsion and Rings columns. '-' means no outliers of that kind were identified.

Mol	Type	Chain	Res	Link	Chirals	Torsions	Rings
2	FMC	A	300	-	-	0/2/22/22	0/3/3/3
3	PO4	A	301	-	-	0/0/0/0	0/0/0/0
3	PO4	B	301	-	-	0/0/0/0	0/0/0/0
2	FMC	C	301	-	-	0/2/22/22	0/3/3/3
3	PO4	C	302	-	-	0/0/0/0	0/0/0/0
4	SO4	C	303	-	-	0/0/0/0	0/0/0/0
4	SO4	C	304	-	-	0/0/0/0	0/0/0/0
3	PO4	D	301	-	-	0/0/0/0	0/0/0/0
2	FMC	D	302	-	-	0/2/22/22	0/3/3/3

Continued on next page...

Continued from previous page...

Mol	Type	Chain	Res	Link	Chirals	Torsions	Rings
4	SO4	D	303	-	-	0/0/0/0	0/0/0/0
3	PO4	E	301	-	-	0/0/0/0	0/0/0/0
4	SO4	E	302	-	-	0/0/0/0	0/0/0/0
2	FMC	F	301	-	-	0/2/22/22	0/3/3/3
3	PO4	F	302	-	-	0/0/0/0	0/0/0/0
4	SO4	F	303	-	-	0/0/0/0	0/0/0/0

All (9) bond length outliers are listed below:

Mol	Chain	Res	Type	Atoms	Z	Observed(Å)	Ideal(Å)
2	C	301	FMC	N7-N8	2.07	1.41	1.37
2	F	301	FMC	N7-N8	2.08	1.41	1.37
2	D	302	FMC	C9-N8	2.17	1.36	1.34
2	D	302	FMC	N7-N8	2.24	1.41	1.37
2	A	300	FMC	N7-N8	2.33	1.42	1.37
2	C	301	FMC	C9-C4	3.47	1.49	1.43
2	F	301	FMC	C9-C4	3.60	1.49	1.43
2	A	300	FMC	C9-C4	3.73	1.49	1.43
2	D	302	FMC	C9-C4	3.94	1.50	1.43

All (23) bond angle outliers are listed below:

Mol	Chain	Res	Type	Atoms	Z	Observed(°)	Ideal(°)
2	C	301	FMC	N3-C2-N1	-6.55	123.72	128.87
2	D	302	FMC	N3-C2-N1	-6.28	123.93	128.87
2	F	301	FMC	N3-C2-N1	-6.18	124.01	128.87
2	A	300	FMC	N3-C2-N1	-6.11	124.07	128.87
2	D	302	FMC	C4-C9-N8	-3.26	106.25	107.95
2	D	302	FMC	C5-C4-N3	-3.19	120.10	125.36
2	A	300	FMC	C4-C9-N8	-3.06	106.36	107.95
2	A	300	FMC	C5-C4-N3	-3.06	120.32	125.36
2	F	301	FMC	C5-C4-N3	-3.01	120.39	125.36
2	C	301	FMC	C5-C4-N3	-2.77	120.80	125.36
2	F	301	FMC	C4-C9-N8	-2.42	106.69	107.95
2	C	301	FMC	C4-C9-N8	-2.32	106.74	107.95
2	A	300	FMC	N6-C6-N1	2.01	121.89	118.52
2	C	301	FMC	C2-N1-C6	2.07	122.47	118.77
2	F	301	FMC	N6-C6-N1	2.50	122.70	118.52
2	C	301	FMC	O4'-C1'-C2'	2.52	107.41	104.69
2	F	301	FMC	O4'-C1'-C2'	2.56	107.46	104.69
2	A	300	FMC	O4'-C1'-C2'	2.59	107.49	104.69
2	D	302	FMC	O4'-C1'-C2'	2.63	107.54	104.69

Continued on next page...

Continued from previous page...

Mol	Chain	Res	Type	Atoms	Z	Observed(°)	Ideal(°)
2	F	301	FMC	C2-N3-C4	4.35	119.06	114.93
2	C	301	FMC	C2-N3-C4	4.56	119.25	114.93
2	A	300	FMC	C2-N3-C4	4.76	119.44	114.93
2	D	302	FMC	C2-N3-C4	5.16	119.82	114.93

There are no chirality outliers.

There are no torsion outliers.

There are no ring outliers.

7 monomers are involved in 8 short contacts:

Mol	Chain	Res	Type	Clashes	Symm-Clashes
2	A	300	FMC	1	0
2	C	301	FMC	2	0
3	C	302	PO4	1	0
4	C	303	SO4	1	0
2	D	302	FMC	1	0
4	E	302	SO4	1	0
2	F	301	FMC	2	0

5.7 Other polymers [i](#)

There are no such residues in this entry.

5.8 Polymer linkage issues [i](#)

There are no chain breaks in this entry.

6 Fit of model and data ⓘ

6.1 Protein, DNA and RNA chains ⓘ

In the following table, the column labelled ‘#RSRZ> 2’ contains the number (and percentage) of RSRZ outliers, followed by percent RSRZ outliers for the chain as percentile scores relative to all X-ray entries and entries of similar resolution. The OWAB column contains the minimum, median, 95th percentile and maximum values of the occupancy-weighted average B-factor per residue. The column labelled ‘Q< 0.9’ lists the number of (and percentage) of residues with an average occupancy less than 0.9.

Mol	Chain	Analysed	<RSRZ>	#RSRZ>2	OWAB(Å ²)	Q<0.9
1	A	237/237 (100%)	-0.47	0 100 100	11, 17, 30, 43	0
1	B	237/237 (100%)	-0.31	4 (1%) 73 76	11, 18, 39, 54	0
1	C	224/237 (94%)	-0.38	7 (3%) 52 56	10, 17, 40, 62	0
1	D	237/237 (100%)	-0.31	7 (2%) 54 57	11, 19, 40, 81	0
1	E	237/237 (100%)	-0.15	5 (2%) 67 70	11, 20, 40, 71	0
1	F	237/237 (100%)	-0.52	0 100 100	9, 16, 27, 42	0
All	All	1409/1422 (99%)	-0.36	23 (1%) 74 78	9, 18, 37, 81	0

All (23) RSRZ outliers are listed below:

Mol	Chain	Res	Type	RSRZ
1	E	214	ALA	9.3
1	D	209	HIS	5.9
1	E	212	THR	5.7
1	D	214	ALA	5.4
1	E	215	ALA	4.3
1	D	207	ARG	3.8
1	C	100	LEU	3.8
1	E	213	THR	3.7
1	C	97	HIS	3.5
1	D	208	THR	3.4
1	C	98	VAL	2.8
1	E	211	GLN	2.7
1	C	204	ALA	2.5
1	C	147	ASP	2.3
1	B	217	ALA	2.3
1	D	212	THR	2.3
1	C	205	HIS	2.3
1	B	212	THR	2.2
1	C	220	THR	2.2

Continued on next page...

Continued from previous page...

Mol	Chain	Res	Type	RSRZ
1	D	213	THR	2.1
1	D	211	GLN	2.1
1	B	97	HIS	2.1
1	B	211	GLN	2.0

6.2 Non-standard residues in protein, DNA, RNA chains [i](#)

There are no non-standard protein/DNA/RNA residues in this entry.

6.3 Carbohydrates [i](#)

There are no carbohydrates in this entry.

6.4 Ligands [i](#)

In the following table, the Atoms column lists the number of modelled atoms in the group and the number defined in the chemical component dictionary. LLDF column lists the quality of electron density of the group with respect to its neighbouring residues in protein, DNA or RNA chains. The B-factors column lists the minimum, median, 95th percentile and maximum values of B factors of atoms in the group. The column labelled 'Q< 0.9' lists the number of atoms with occupancy less than 0.9.

Mol	Type	Chain	Res	Atoms	RSCC	RSR	LLDF	B-factors(Å ²)	Q<0.9
2	FMC	F	301	19/19	0.82	0.20	12.85	15,15,15,15	19
2	FMC	A	300	19/19	0.85	0.24	10.46	15,15,15,15	19
2	FMC	C	301	19/19	0.83	0.20	8.20	15,15,15,15	19
2	FMC	D	302	19/19	0.85	0.19	6.35	15,15,15,15	19
3	PO4	A	301	5/5	0.99	0.11	3.17	13,13,16,16	0
3	PO4	F	302	5/5	0.99	0.08	1.95	10,10,14,15	0
3	PO4	D	301	5/5	0.98	0.08	1.23	24,24,28,29	0
4	SO4	F	303	5/5	0.97	0.09	0.76	16,20,25,29	5
3	PO4	B	301	5/5	0.97	0.07	-0.41	30,31,36,38	0
3	PO4	E	301	5/5	0.98	0.07	-0.66	24,27,33,33	0
3	PO4	C	302	5/5	0.99	0.05	-2.22	23,23,27,31	0
4	SO4	C	304	5/5	0.88	0.13	-	38,38,52,53	5
4	SO4	C	303	5/5	0.94	0.15	-	36,37,43,47	5
4	SO4	E	302	5/5	0.96	0.11	-	29,32,34,43	5
4	SO4	D	303	5/5	0.92	0.20	-	36,39,42,44	5

6.5 Other polymers [i](#)

There are no such residues in this entry.