



# Full wwPDB X-ray Structure Validation Report ⓘ

Feb 19, 2016 – 07:33 PM GMT

PDB ID : 4TUO  
Title : Crystal structure of monoclonal antibody against neuroblastoma associated antigen.  
Authors : Golik, P.; Grudnik, P.; Horwacik, I.; Zdzalik, M.; Rokita, H.; Dubin, G.  
Deposited on : 2014-06-24  
Resolution : 1.55 Å(reported)

This is a Full wwPDB X-ray Structure Validation Report for a publicly released PDB entry.  
We welcome your comments at [validation@mail.wwpdb.org](mailto:validation@mail.wwpdb.org)  
A user guide is available at  
<http://wwpdb.org/validation/2016/XrayValidationReportHelp>  
with specific help available everywhere you see the ⓘ symbol.

---

The following versions of software and data (see [references ⓘ](#)) were used in the production of this report:

MolProbity : 4.02b-467  
Mogul : 1.7.1 (RC1), CSD as537be (2016)  
Xtriage (Phenix) : 1.9-1692  
EDS : rb-20026982  
Percentile statistics : 20151230.v01 (using entries in the PDB archive December 30th 2015)  
Refmac : 5.8.0135  
CCP4 : 6.5.0  
Ideal geometry (proteins) : Engh & Huber (2001)  
Ideal geometry (DNA, RNA) : Parkinson et al. (1996)  
Validation Pipeline (wwPDB-VP) : rb-20026982

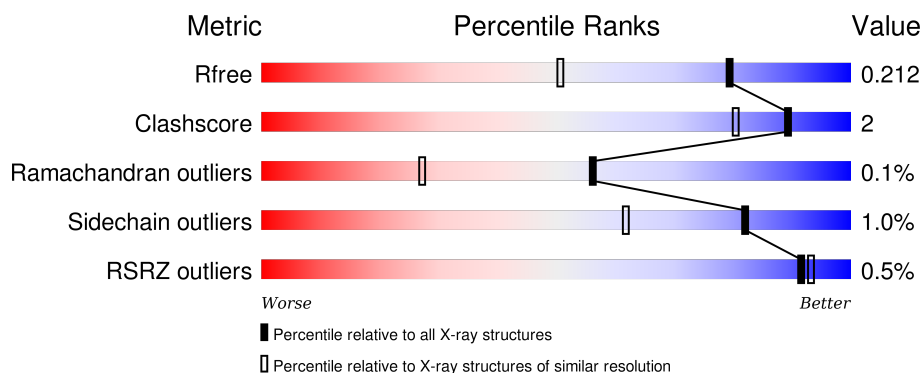
# 1 Overall quality at a glance

The following experimental techniques were used to determine the structure:

*X-RAY DIFFRACTION*

The reported resolution of this entry is 1.55 Å.

Percentile scores (ranging between 0-100) for global validation metrics of the entry are shown in the following graphic. The table shows the number of entries on which the scores are based.



Metric	Whole archive (#Entries)	Similar resolution (#Entries, resolution range(Å))
$R_{free}$	91344	1665 (1.58-1.54)
Clashscore	102246	1014 (1.56-1.56)
Ramachandran outliers	100387	1704 (1.58-1.54)
Sidechain outliers	100360	1702 (1.58-1.54)
RSRZ outliers	91569	1668 (1.58-1.54)

The table below summarises the geometric issues observed across the polymeric chains and their fit to the electron density. The red, orange, yellow and green segments on the lower bar indicate the fraction of residues that contain outliers for  $\geq 3$ , 2, 1 and 0 types of geometric quality criteria. A grey segment represents the fraction of residues that are not modelled. The numeric value for each fraction is indicated below the corresponding segment, with a dot representing fractions  $\leq 5\%$ . The upper red bar (where present) indicates the fraction of residues that have poor fit to the electron density. The numeric value is given above the bar.

Mol	Chain	Length	Quality of chain
1	A	214	<div> <div>86%</div> <div>10% .</div> </div>
1	C	214	<div> <div>%</div> <div>92%</div> <div>7% .</div> </div>
2	B	220	<div> <div>90%</div> <div>9%</div> </div>
2	D	220	<div> <div>94%</div> <div>5% .</div> </div>

## 2 Entry composition

There are 9 unique types of molecules in this entry. The entry contains 7332 atoms, of which 0 are hydrogens and 0 are deuteriums.

In the tables below, the ZeroOcc column contains the number of atoms modelled with zero occupancy, the AltConf column contains the number of residues with at least one atom in alternate conformation and the Trace column contains the number of residues modelled with at most 2 atoms.

- Molecule 1 is a protein called Heavy chain of monoclonal antibody against neuroblastoma associated antigen.

Mol	Chain	Residues	Atoms					ZeroOcc	AltConf	Trace
1	A	205	Total	C	N	O	S	0	8	0
			1545	984	245	303	13			
1	C	211	Total	C	N	O	S	0	7	0
			1582	998	252	320	12			

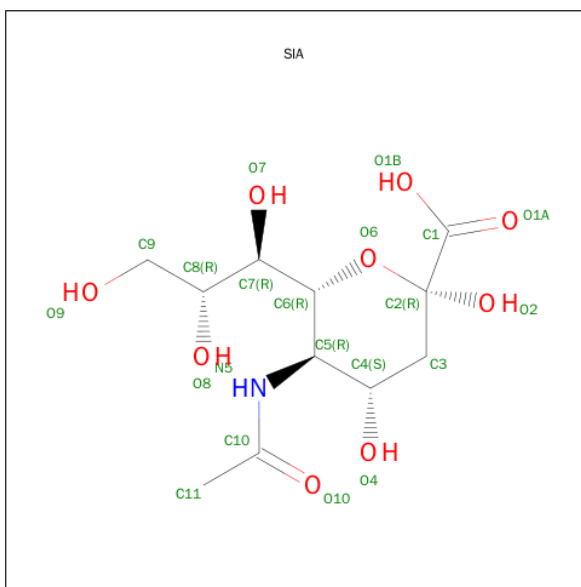
- Molecule 2 is a protein called Light chain of monoclonal antibody against neuroblastoma associated antigen.

Mol	Chain	Residues	Atoms					ZeroOcc	AltConf	Trace
2	B	219	Total	C	N	O	S	0	6	0
			1687	1053	286	341	7			
2	D	218	Total	C	N	O	S	0	2	0
			1674	1048	285	335	6			

- Molecule 3 is SODIUM ION (three-letter code: NA) (formula: Na).

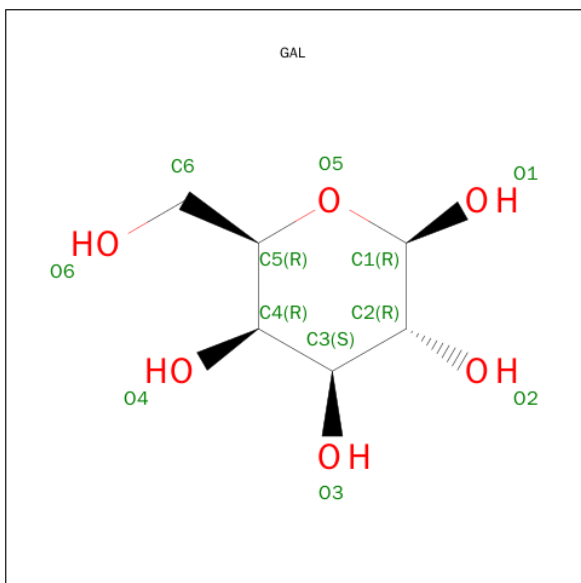
Mol	Chain	Residues	Atoms		ZeroOcc	AltConf
3	B	1	Total	Na	0	0
			1	1		
3	D	1	Total	Na	0	0
			1	1		

- Molecule 4 is O-SIALIC ACID (three-letter code: SIA) (formula: C<sub>11</sub>H<sub>19</sub>NO<sub>9</sub>).



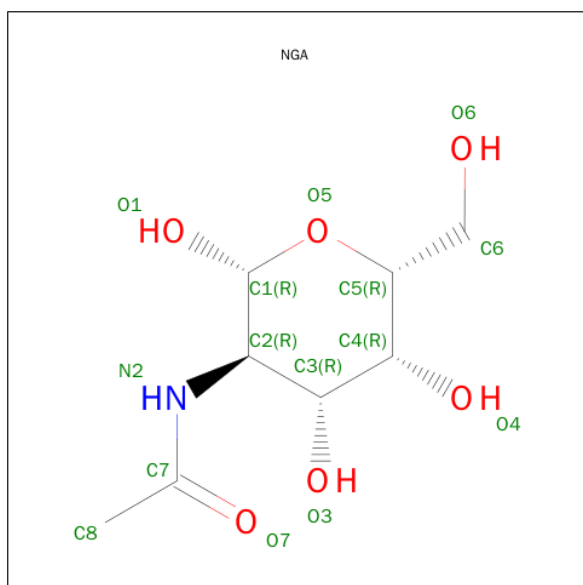
Mol	Chain	Residues	Atoms				ZeroOcc	AltConf
4	B	1	Total	C	N	O	0	0
			20	11	1	8		
4	B	1	Total	C	N	O	0	0
			20	11	1	8		
4	D	1	Total	C	N	O	0	0
			20	11	1	8		
4	D	1	Total	C	N	O	0	0
			20	11	1	8		

- Molecule 5 is BETA-D-GALACTOSE (three-letter code: GAL) (formula:  $C_6H_{12}O_6$ ).



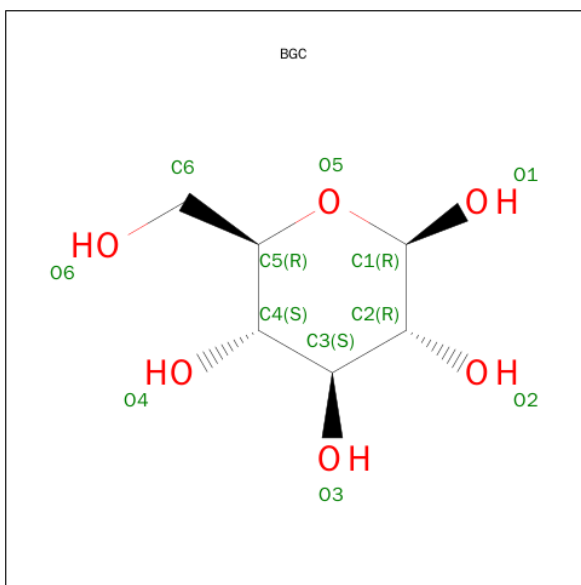
Mol	Chain	Residues	Atoms			ZeroOcc	AltConf
5	B	1	Total	C	O	0	0
			11	6	5		
5	D	1	Total	C	O	0	0
			11	6	5		

- Molecule 6 is N-ACETYL-D-GALACTOSAMINE (three-letter code: NGA) (formula:  $C_8H_{15}NO_6$ ).



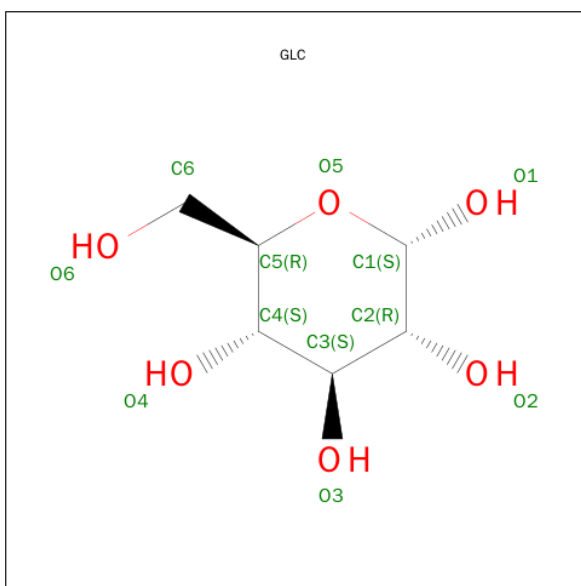
Mol	Chain	Residues	Atoms				ZeroOcc	AltConf
6	B	1	Total	C	N	O	0	0
			14	8	1	5		
6	D	1	Total	C	N	O	0	0
			14	8	1	5		

- Molecule 7 is BETA-D-GLUCOSE (three-letter code: BGC) (formula:  $C_6H_{12}O_6$ ).



Mol	Chain	Residues	Atoms			ZeroOcc	AltConf
7	B	1	Total	C	O	0	0
			12	6	6		

- Molecule 8 is ALPHA-D-GLUCOSE (three-letter code: GLC) (formula: C<sub>6</sub>H<sub>12</sub>O<sub>6</sub>).



Mol	Chain	Residues	Atoms			ZeroOcc	AltConf
8	D	1	Total	C	O	0	0
			12	6	6		

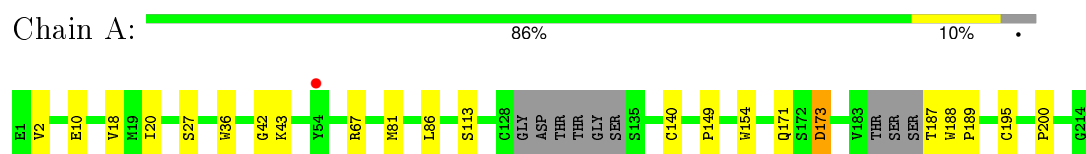
- Molecule 9 is water.

Mol	Chain	Residues	Atoms		ZeroOcc	AltConf
9	A	138	Total 138	O 138	0	0
9	B	182	Total 182	O 182	0	0
9	C	158	Total 158	O 158	0	0
9	D	210	Total 210	O 210	0	0

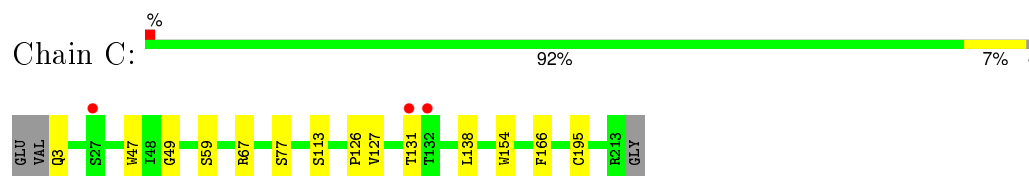
### 3 Residue-property plots [i](#)

These plots are drawn for all protein, RNA and DNA chains in the entry. The first graphic for a chain summarises the proportions of errors displayed in the second graphic. The second graphic shows the sequence view annotated by issues in geometry and electron density. Residues are color-coded according to the number of geometric quality criteria for which they contain at least one outlier: green = 0, yellow = 1, orange = 2 and red = 3 or more. A red dot above a residue indicates a poor fit to the electron density ( $RSRZ > 2$ ). Stretches of 2 or more consecutive residues without any outlier are shown as a green connector. Residues present in the sample, but not in the model, are shown in grey.

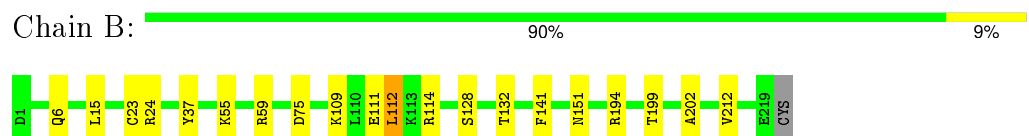
- Molecule 1: Heavy chain of monoclonal antibody against neuroblastoma associated antigen



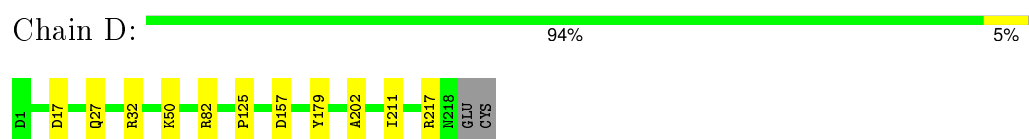
- Molecule 1: Heavy chain of monoclonal antibody against neuroblastoma associated antigen



- Molecule 2: Light chain of monoclonal antibody against neuroblastoma associated antigen



- Molecule 2: Light chain of monoclonal antibody against neuroblastoma associated antigen





## 4 Data and refinement statistics

Property	Value	Source
Space group	P 1	Depositor
Cell constants a, b, c, $\alpha$ , $\beta$ , $\gamma$	58.09Å 61.09Å 65.36Å 107.79° 113.43° 95.68°	Depositor
Resolution (Å)	56.28 – 1.55 56.29 – 1.55	Depositor EDS
% Data completeness (in resolution range)	90.4 (56.28-1.55) 79.7 (56.29-1.55)	Depositor EDS
$R_{merge}$	0.07	Depositor
$R_{sym}$	(Not available)	Depositor
$\langle I/\sigma(I) \rangle$ <sup>1</sup>	2.33 (at 1.55Å)	Xtriage
Refinement program	REFMAC 5.8.0049	Depositor
R, $R_{free}$	0.166 , 0.206 0.175 , 0.212	Depositor DCC
$R_{free}$ test set	4984 reflections (5.26%)	DCC
Wilson B-factor (Å <sup>2</sup> )	15.1	Xtriage
Anisotropy	0.401	Xtriage
Bulk solvent $k_{sol}$ (e/Å <sup>3</sup> ), $B_{sol}$ (Å <sup>2</sup> )	0.36 , 44.2	EDS
Estimated twinning fraction	No twinning to report.	Xtriage
L-test for twinning <sup>2</sup>	$\langle  L  \rangle = 0.49$ , $\langle L^2 \rangle = 0.32$	Xtriage
Outliers	0 of 99735 reflections	Xtriage
$F_o, F_c$ correlation	0.96	EDS
Total number of atoms	7332	wwPDB-VP
Average B, all atoms (Å <sup>2</sup> )	16.0	wwPDB-VP

Xtriage's analysis on translational NCS is as follows: *The analyses of the Patterson function reveals a significant off-origin peak that is 24.45 % of the origin peak, indicating pseudo translational symmetry. The chance of finding a peak of this or larger height randomly in a structure without pseudo translational symmetry is equal to 3.8238e-03. The detected translational NCS is most likely also responsible for the elevated intensity ratio.*

<sup>1</sup>Intensities estimated from amplitudes.

<sup>2</sup>Theoretical values of  $\langle |L| \rangle$ ,  $\langle L^2 \rangle$  for acentric reflections are 0.5, 0.375 respectively for untwinned datasets, and 0.333, 0.2 for perfectly twinned datasets.

## 5 Model quality [i](#)

### 5.1 Standard geometry [i](#)

Bond lengths and bond angles in the following residue types are not validated in this section: BGC, NGA, NA, GLC, SIA, GAL

The Z score for a bond length (or angle) is the number of standard deviations the observed value is removed from the expected value. A bond length (or angle) with  $|Z| > 5$  is considered an outlier worth inspection. RMSZ is the root-mean-square of all Z scores of the bond lengths (or angles).

Mol	Chain	Bond lengths		Bond angles	
		RMSZ	$\# Z  > 5$	RMSZ	$\# Z  > 5$
1	A	1.00	0/1605	0.97	4/2186 (0.2%)
1	C	1.04	2/1638 (0.1%)	1.02	1/2238 (0.0%)
2	B	0.97	0/1742	1.05	3/2369 (0.1%)
2	D	1.06	1/1719 (0.1%)	1.08	4/2337 (0.2%)
All	All	1.02	3/6704 (0.0%)	1.03	12/9130 (0.1%)

All (3) bond length outliers are listed below:

Mol	Chain	Res	Type	Atoms	Z	Observed(Å)	Ideal(Å)
1	C	59	SER	CB-OG	-5.90	1.34	1.42
2	D	179	TYR	CE1-CZ	-5.41	1.31	1.38
1	C	166	PHE	CG-CD1	5.17	1.46	1.38

All (12) bond angle outliers are listed below:

Mol	Chain	Res	Type	Atoms	Z	Observed(°)	Ideal(°)
2	D	32	ARG	NE-CZ-NH1	8.79	124.70	120.30
2	D	32	ARG	NE-CZ-NH2	-7.96	116.32	120.30
1	A	173	ASP	CB-CG-OD1	7.26	124.84	118.30
2	B	114	ARG	NE-CZ-NH2	-6.71	116.94	120.30
1	A	67	ARG	NE-CZ-NH1	6.34	123.47	120.30
2	B	141	PHE	CB-CG-CD1	5.80	124.86	120.80
2	D	217	ARG	NE-CZ-NH2	-5.61	117.50	120.30
1	A	81[A]	MET	CG-SD-CE	5.51	109.02	100.20
1	A	81[B]	MET	CG-SD-CE	5.51	109.02	100.20
2	D	17	ASP	CB-CG-OD2	-5.15	113.66	118.30
2	B	59	ARG	NE-CZ-NH1	5.09	122.84	120.30
1	C	67	ARG	NE-CZ-NH1	5.07	122.83	120.30

There are no chirality outliers.

There are no planarity outliers.

## 5.2 Too-close contacts ⓘ

In the following table, the Non-H and H(model) columns list the number of non-hydrogen atoms and hydrogen atoms in the chain respectively. The H(added) column lists the number of hydrogen atoms added and optimized by MolProbity. The Clashes column lists the number of clashes within the asymmetric unit, whereas Symm-Clashes lists symmetry related clashes.

Mol	Chain	Non-H	H(model)	H(added)	Clashes	Symm-Clashes
1	A	1545	0	1503	11	0
1	C	1582	0	1512	6	0
2	B	1687	0	1619	9	0
2	D	1674	0	1608	6	0
3	B	1	0	0	0	0
3	D	1	0	0	0	0
4	B	40	0	33	0	0
4	D	40	0	33	0	0
5	B	11	0	8	0	0
5	D	11	0	8	0	0
6	B	14	0	13	0	0
6	D	14	0	13	0	0
7	B	12	0	11	0	0
8	D	12	0	11	0	0
9	A	138	0	0	1	1
9	B	182	0	0	0	0
9	C	158	0	0	2	0
9	D	210	0	0	4	1
All	All	7332	0	6372	31	1

The all-atom clashscore is defined as the number of clashes found per 1000 atoms (including hydrogen atoms). The all-atom clashscore for this structure is 2.

All (31) close contacts within the same asymmetric unit are listed below, sorted by their clash magnitude.

Atom-1	Atom-2	Interatomic distance (Å)	Clash overlap (Å)
1:C:3:GLN:N	9:C:450:HOH:O	2.19	0.74
2:D:157:ASP:OD2	9:D:561:HOH:O	2.06	0.73
2:B:128:SER:O	2:B:132:THR:HG23	1.96	0.66
1:A:2:VAL:HG22	1:A:27:SER:HB3	1.81	0.63
1:A:10:GLU:HG3	1:A:18[A]:VAL:HG11	1.83	0.60
2:B:15:LEU:HG	2:B:112:LEU:HD21	1.84	0.59

*Continued on next page...*

Continued from previous page...

Atom-1	Atom-2	Interatomic distance (Å)	Clash overlap (Å)
2:D:202:ALA:HB3	2:D:211:ILE:HG23	1.85	0.58
2:B:6:GLN:HG3	2:B:23[B]:CYS:SG	2.43	0.58
1:A:188:TRP:CG	1:A:189:PRO:HA	2.44	0.53
1:A:18[A]:VAL:HG23	1:A:86:LEU:HD11	1.91	0.53
1:A:10:GLU:HG3	1:A:18[A]:VAL:CG1	2.38	0.53
2:B:109:LYS:HG2	2:B:111:GLU:HG3	1.95	0.48
2:D:27:GLN:NE2	9:D:404:HOH:O	2.47	0.47
1:C:154:TRP:CZ3	1:C:195[B]:CYS:HB3	2.50	0.47
1:A:2:VAL:CG2	1:A:27:SER:HB3	2.45	0.47
1:C:126:PRO:HD3	1:C:138:LEU:CD2	2.45	0.47
1:C:127:VAL:HG12	2:D:125:PRO:HD3	1.96	0.46
1:A:154:TRP:CZ3	1:A:195[A]:CYS:HB3	2.51	0.46
1:A:113:SER:HB2	1:A:173:ASP:OD2	2.16	0.45
2:B:37:TYR:CE2	2:B:55:LYS:HE3	2.50	0.45
1:A:171:GLN:NE2	9:A:437:HOH:O	2.49	0.45
2:D:50:LYS:HG2	9:D:538:HOH:O	2.16	0.45
2:B:24:ARG:NE	2:B:75[B]:ASP:OD1	2.50	0.44
2:B:199:THR:HG23	2:B:212:VAL:HG13	1.99	0.44
2:B:199:THR:CG2	2:B:212:VAL:HG13	2.47	0.43
2:D:82:ARG:N	9:D:403:HOH:O	2.46	0.43
1:A:20[B]:ILE:HD11	1:A:36:TRP:HZ3	1.84	0.43
1:C:47:TRP:CH2	1:C:49:GLY:HA2	2.55	0.41
1:A:42:GLY:O	1:A:43:LYS:HB2	2.19	0.41
1:C:113:SER:N	9:C:301:HOH:O	2.53	0.41
2:B:151:ASN:O	2:B:202:ALA:HA	2.21	0.41

All (1) symmetry-related close contacts are listed below. The label for Atom-2 includes the symmetry operator and encoded unit-cell translations to be applied.

Atom-1	Atom-2	Interatomic distance (Å)	Clash overlap (Å)
9:A:339:HOH:O	9:D:470:HOH:O[1_645]	1.98	0.22

## 5.3 Torsion angles [i](#)

### 5.3.1 Protein backbone [i](#)

In the following table, the Percentiles column shows the percent Ramachandran outliers of the chain as a percentile score with respect to all X-ray entries followed by that with respect to entries of similar resolution.

The Analysed column shows the number of residues for which the backbone conformation was analysed, and the total number of residues.

Mol	Chain	Analysed	Favoured	Allowed	Outliers	Percentiles	
1	A	207/214 (97%)	205 (99%)	2 (1%)	0	100	100
1	C	215/214 (100%)	211 (98%)	3 (1%)	1 (0%)	34	9
2	B	223/220 (101%)	221 (99%)	2 (1%)	0	100	100
2	D	218/220 (99%)	213 (98%)	5 (2%)	0	100	100
All	All	863/868 (99%)	850 (98%)	12 (1%)	1 (0%)	56	27

All (1) Ramachandran outliers are listed below:

Mol	Chain	Res	Type
1	C	131	THR

### 5.3.2 Protein sidechains ⓘ

In the following table, the Percentiles column shows the percent sidechain outliers of the chain as a percentile score with respect to all X-ray entries followed by that with respect to entries of similar resolution.

The Analysed column shows the number of residues for which the sidechain conformation was analysed, and the total number of residues.

Mol	Chain	Analysed	Rotameric	Outliers	Percentiles	
1	A	174/183 (95%)	169 (97%)	5 (3%)	50	17
1	C	179/183 (98%)	178 (99%)	1 (1%)	90	78
2	B	194/198 (98%)	192 (99%)	2 (1%)	82	62
2	D	191/198 (96%)	191 (100%)	0	100	100
All	All	738/762 (97%)	730 (99%)	8 (1%)	82	58

All (8) residues with a non-rotameric sidechain are listed below:

Mol	Chain	Res	Type
1	A	140[A]	CYS
1	A	140[B]	CYS
1	A	149	PRO
1	A	187	THR
1	A	200	PRO
2	B	112	LEU
2	B	194	ARG

*Continued on next page...*

*Continued from previous page...*

Mol	Chain	Res	Type
1	C	77	SER

Some sidechains can be flipped to improve hydrogen bonding and reduce clashes. All (2) such sidechains are listed below:

Mol	Chain	Res	Type
2	B	18	GLN
2	B	47	GLN

### 5.3.3 RNA [i](#)

There are no RNA molecules in this entry.

## 5.4 Non-standard residues in protein, DNA, RNA chains [i](#)

There are no non-standard protein/DNA/RNA residues in this entry.

## 5.5 Carbohydrates [i](#)

There are no carbohydrates in this entry.

## 5.6 Ligand geometry [i](#)

Of 12 ligands modelled in this entry, 2 are monoatomic - leaving 10 for Mogul analysis.

In the following table, the Counts columns list the number of bonds (or angles) for which Mogul statistics could be retrieved, the number of bonds (or angles) that are observed in the model and the number of bonds (or angles) that are defined in the chemical component dictionary. The Link column lists molecule types, if any, to which the group is linked. The Z score for a bond length (or angle) is the number of standard deviations the observed value is removed from the expected value. A bond length (or angle) with  $|Z| > 2$  is considered an outlier worth inspection. RMSZ is the root-mean-square of all Z scores of the bond lengths (or angles).

Mol	Type	Chain	Res	Link	Bond lengths			Bond angles		
					Counts	RMSZ	$\# Z  > 2$	Counts	RMSZ	$\# Z  > 2$
4	SIA	B	302	5,4	17,20,21	1.53	4 (23%)	18,28,31	1.80	4 (22%)
5	GAL	B	303	4,7,6	11,11,12	1.10	2 (18%)	15,15,17	0.94	0
6	NGA	B	304	5	14,14,15	0.93	0	15,19,21	0.89	0
7	BGC	B	305	5	12,12,12	0.80	0	17,17,17	1.31	3 (17%)
4	SIA	B	306	4	17,20,21	1.13	1 (5%)	18,28,31	1.55	4 (22%)

Mol	Type	Chain	Res	Link	Bond lengths			Bond angles		
					Counts	RMSZ	# Z  > 2	Counts	RMSZ	# Z  > 2
4	SIA	D	302	5,4	17,20,21	1.20	3 (17%)	18,28,31	1.69	4 (22%)
5	GAL	D	303	8,4,6	11,11,12	0.69	0	15,15,17	0.93	1 (6%)
6	NGA	D	304	5	14,14,15	0.73	0	15,19,21	1.44	3 (20%)
8	GLC	D	305	5	12,12,12	0.69	0	17,17,17	1.65	6 (35%)
4	SIA	D	306	4	17,20,21	0.97	0	18,28,31	1.34	4 (22%)

In the following table, the Chirals column lists the number of chiral outliers, the number of chiral centers analysed, the number of these observed in the model and the number defined in the chemical component dictionary. Similar counts are reported in the Torsion and Rings columns. '-' means no outliers of that kind were identified.

Mol	Type	Chain	Res	Link	Chirals	Torsions	Rings
4	SIA	B	302	5,4	-	0/14/34/38	0/1/1/1
5	GAL	B	303	4,7,6	-	0/2/19/22	0/1/1/1
6	NGA	B	304	5	-	0/6/23/26	0/1/1/1
7	BGC	B	305	5	-	0/2/22/22	0/1/1/1
4	SIA	B	306	4	-	0/14/34/38	0/1/1/1
4	SIA	D	302	5,4	-	0/14/34/38	0/1/1/1
5	GAL	D	303	8,4,6	-	0/2/19/22	0/1/1/1
6	NGA	D	304	5	-	0/6/23/26	0/1/1/1
8	GLC	D	305	5	-	0/2/22/22	0/1/1/1
4	SIA	D	306	4	-	0/14/34/38	0/1/1/1

All (10) bond length outliers are listed below:

Mol	Chain	Res	Type	Atoms	Z	Observed(Å)	Ideal(Å)
4	B	302	SIA	C11-C10	-3.41	1.43	1.50
4	D	302	SIA	C3-C4	-2.66	1.48	1.52
4	D	302	SIA	C11-C10	-2.66	1.45	1.50
4	B	306	SIA	C5-N5	-2.21	1.42	1.45
5	B	303	GAL	C4-C5	-2.20	1.48	1.53
5	B	303	GAL	C2-C3	2.03	1.55	1.52
4	B	302	SIA	C6-C5	2.12	1.56	1.53
4	D	302	SIA	O10-C10	2.17	1.28	1.23
4	B	302	SIA	C3-C2	2.47	1.56	1.52
4	B	302	SIA	O10-C10	2.91	1.30	1.23

All (29) bond angle outliers are listed below:

Mol	Chain	Res	Type	Atoms	Z	Observed(°)	Ideal(°)
4	B	302	SIA	C3-C4-C5	-4.79	106.14	111.47

*Continued on next page...*

*Continued from previous page...*

Mol	Chain	Res	Type	Atoms	Z	Observed(°)	Ideal(°)
4	B	306	SIA	C3-C4-C5	-3.64	107.42	111.47
6	D	304	NGA	C1-O5-C5	-2.96	107.79	112.14
6	D	304	NGA	O5-C5-C4	-2.82	105.47	110.13
4	D	302	SIA	O6-C2-C3	-2.80	104.29	109.77
7	B	305	BGC	O1-C1-O5	-2.80	102.53	110.33
8	D	305	GLC	O2-C2-C3	-2.67	104.35	110.36
4	B	302	SIA	C6-C5-N5	-2.63	106.56	111.06
8	D	305	GLC	C4-C3-C2	-2.61	105.99	110.79
4	D	306	SIA	C8-C7-C6	-2.43	107.96	113.08
8	D	305	GLC	O5-C1-C2	-2.43	105.75	110.00
4	B	302	SIA	C7-C6-C5	-2.42	110.73	114.06
4	D	306	SIA	O4-C4-C3	-2.40	104.16	110.02
6	D	304	NGA	O6-C6-C5	-2.29	103.66	111.30
7	B	305	BGC	O2-C2-C3	-2.27	105.23	110.36
5	D	303	GAL	O5-C5-C4	-2.24	106.42	110.13
8	D	305	GLC	O3-C3-C2	-2.20	105.39	110.36
8	D	305	GLC	O2-C2-C1	2.05	114.23	109.74
4	D	302	SIA	C8-C7-C6	2.14	117.60	113.08
8	D	305	GLC	O3-C3-C4	2.19	115.29	110.36
4	B	306	SIA	O6-C6-C5	2.27	112.20	108.48
4	B	302	SIA	O6-C6-C5	2.32	112.29	108.48
4	D	306	SIA	O9-C9-C8	2.52	116.65	111.07
4	D	306	SIA	C7-C6-C5	2.54	117.56	114.06
4	D	302	SIA	O6-C6-C5	2.62	112.78	108.48
4	B	306	SIA	O9-C9-C8	2.65	116.96	111.07
7	B	305	BGC	O1-C1-C2	2.68	116.45	109.05
4	D	302	SIA	C5-N5-C10	2.89	130.82	123.21
4	B	306	SIA	C7-C6-C5	2.99	118.18	114.06

There are no chirality outliers.

There are no torsion outliers.

There are no ring outliers.

No monomer is involved in short contacts.

## 5.7 Other polymers ⓘ

There are no such residues in this entry.



## 5.8 Polymer linkage issues ⓘ

There are no chain breaks in this entry.

## 6 Fit of model and data [i](#)

### 6.1 Protein, DNA and RNA chains [i](#)

In the following table, the column labelled ‘#RSRZ> 2’ contains the number (and percentage) of RSRZ outliers, followed by percent RSRZ outliers for the chain as percentile scores relative to all X-ray entries and entries of similar resolution. The OWAB column contains the minimum, median, 95<sup>th</sup> percentile and maximum values of the occupancy-weighted average B-factor per residue. The column labelled ‘Q< 0.9’ lists the number of (and percentage) of residues with an average occupancy less than 0.9.

Mol	Chain	Analysed	<RSRZ>	#RSRZ>2	OWAB(Å <sup>2</sup> )	Q<0.9
1	A	205/214 (95%)	-0.14	1 (0%) 91 93	10, 17, 29, 40	0
1	C	211/214 (98%)	-0.13	3 (1%) 78 80	8, 16, 29, 57	0
2	B	219/220 (99%)	-0.26	0 100 100	9, 15, 26, 42	0
2	D	218/220 (99%)	-0.29	0 100 100	8, 13, 25, 37	0
All	All	853/868 (98%)	-0.21	4 (0%) 91 93	8, 15, 28, 57	0

All (4) RSRZ outliers are listed below:

Mol	Chain	Res	Type	RSRZ
1	A	54	TYR	3.9
1	C	131	THR	2.6
1	C	132	THR	2.1
1	C	27	SER	2.0

### 6.2 Non-standard residues in protein, DNA, RNA chains [i](#)

There are no non-standard protein/DNA/RNA residues in this entry.

### 6.3 Carbohydrates [i](#)

There are no carbohydrates in this entry.

### 6.4 Ligands [i](#)

In the following table, the Atoms column lists the number of modelled atoms in the group and the number defined in the chemical component dictionary. LLDF column lists the quality of electron density of the group with respect to its neighbouring residues in protein, DNA or RNA chains. The B-factors column lists the minimum, median, 95<sup>th</sup> percentile and maximum values of B factors

of atoms in the group. The column labelled 'Q< 0.9' lists the number of atoms with occupancy less than 0.9.

Mol	Type	Chain	Res	Atoms	RSCC	RSR	LLDF	B-factors( $\text{\AA}^2$ )	Q<0.9
7	BGC	B	305	12/12	0.94	0.13	1.91	16,22,25,25	0
6	NGA	D	304	14/15	0.97	0.07	0.38	12,13,18,19	0
6	NGA	B	304	14/15	0.96	0.08	0.19	12,14,19,19	0
4	SIA	B	306	20/21	0.97	0.07	-0.17	10,11,13,15	0
3	NA	D	301	1/1	0.99	0.08	-0.24	12,12,12,12	0
3	NA	B	301	1/1	0.97	0.08	-0.52	22,22,22,22	0
4	SIA	B	302	20/21	0.93	0.09	-0.59	13,14,20,26	0
4	SIA	D	306	20/21	0.98	0.06	-0.90	11,12,14,14	0
4	SIA	D	302	20/21	0.97	0.06	-1.34	12,15,20,21	0
5	GAL	B	303	11/12	0.96	0.06	-2.23	14,15,17,18	0
8	GLC	D	305	12/12	0.88	0.12	-	19,29,34,38	0
5	GAL	D	303	11/12	0.97	0.06	-	14,15,18,18	0

## 6.5 Other polymers [i](#)

There are no such residues in this entry.