



Full wwPDB X-ray Structure Validation Report ⓘ

Feb 1, 2016 – 08:37 PM GMT

PDB ID : 4TWC
Title : 2-Benzamido-N-(1H-benzo[d]imidazol-2-yl)thiazole-4- carboxamide derivatives
as potent inhibitors of CK1d/e
Authors : Bischof, J.; Leban, L.; Zaja, M.; Grothey, A.; Radunsky, B.; Othersen, O.;
Strobl, S.; Vitt, D.; Knippschild, U.
Deposited on : 2014-06-30
Resolution : 1.70 Å(reported)

This is a Full wwPDB X-ray Structure Validation Report for a publicly released PDB entry.
We welcome your comments at validation@mail.wwpdb.org
A user guide is available at
<http://wwpdb.org/validation/2016/XrayValidationReportHelp>
with specific help available everywhere you see the ⓘ symbol.

The following versions of software and data (see [references ⓘ](#)) were used in the production of this report:

MolProbity : 4.02b-467
Mogul : 1.7 (RC4), CSD as536be (2015)
Xtriage (Phenix) : 1.9-1692
EDS : rb-20026688
Percentile statistics : 20151230.v01 (using entries in the PDB archive December 30th 2015)
Refmac : 5.8.0135
CCP4 : 6.5.0
Ideal geometry (proteins) : Engh & Huber (2001)
Ideal geometry (DNA, RNA) : Parkinson et al. (1996)
Validation Pipeline (wwPDB-VP) : trunk26865

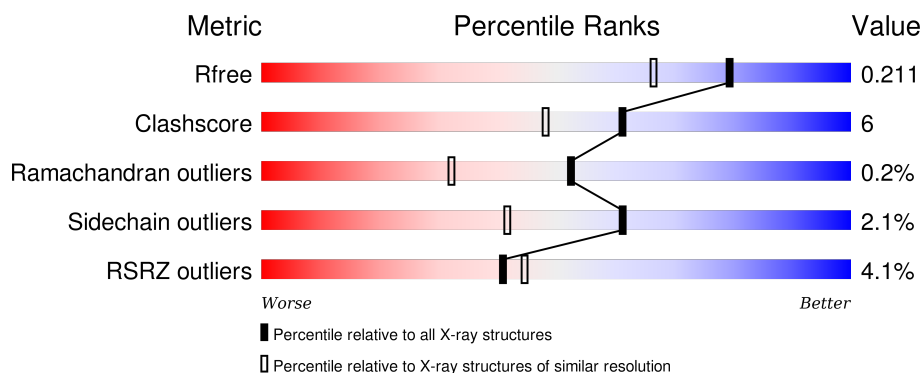
1 Overall quality at a glance

The following experimental techniques were used to determine the structure:

X-RAY DIFFRACTION

The reported resolution of this entry is 1.70 Å.

Percentile scores (ranging between 0-100) for global validation metrics of the entry are shown in the following graphic. The table shows the number of entries on which the scores are based.



Metric	Whole archive (#Entries)	Similar resolution (#Entries, resolution range(Å))
R_{free}	91344	3190 (1.70-1.70)
Clashscore	102246	3585 (1.70-1.70)
Ramachandran outliers	100387	3527 (1.70-1.70)
Sidechain outliers	100360	3527 (1.70-1.70)
RSRZ outliers	91569	3200 (1.70-1.70)

The table below summarises the geometric issues observed across the polymeric chains and their fit to the electron density. The red, orange, yellow and green segments on the lower bar indicate the fraction of residues that contain outliers for ≥ 3 , 2, 1 and 0 types of geometric quality criteria. A grey segment represents the fraction of residues that are not modelled. The numeric value for each fraction is indicated below the corresponding segment, with a dot representing fractions $\leq 5\%$. The upper red bar (where present) indicates the fraction of residues that have poor fit to the electron density. The numeric value is given above the bar.

Mol	Chain	Length	Quality of chain
1	A	295	<div> <div>5%</div> <div>87%</div> <div>12%</div> <div>.</div> </div>
1	B	295	<div> <div>3%</div> <div>91%</div> <div>7%</div> <div>..</div> </div>

The following table lists non-polymeric compounds, carbohydrate monomers and non-standard residues in protein, DNA, RNA chains that are outliers for geometric or electron-density-fit criteria:

Mol	Type	Chain	Res	Chirality	Geometry	Clashes	Electron density
2	SO4	A	1004	-	-	X	X
2	SO4	B	1004	-	-	-	X
3	GOL	A	1005	-	-	-	X
4	BOG	A	1006	X	-	-	X
4	BOG	A	1008	X	-	-	X

2 Entry composition [i](#)

There are 7 unique types of molecules in this entry. The entry contains 5908 atoms, of which 0 are hydrogens and 0 are deuteriums.

In the tables below, the ZeroOcc column contains the number of atoms modelled with zero occupancy, the AltConf column contains the number of residues with at least one atom in alternate conformation and the Trace column contains the number of residues modelled with at most 2 atoms.

- Molecule 1 is a protein called Casein kinase I isoform delta.

Mol	Chain	Residues	Atoms					ZeroOcc	AltConf	Trace
1	A	293	Total	C	N	O	S	0	11	0
			2444	1574	419	435	16			
1	B	292	Total	C	N	O	S	0	11	0
			2455	1583	426	430	16			

There are 2 discrepancies between the modelled and reference sequences:

Chain	Residue	Modelled	Actual	Comment	Reference
A	13	ASN	ARG	engineered mutation	UNP P48730
B	13	ASN	ARG	engineered mutation	UNP P48730

- Molecule 2 is SULFATE ION (three-letter code: SO4) (formula: O₄S).



Mol	Chain	Residues	Atoms			ZeroOcc	AltConf
2	A	1	Total	O	S	0	0
			5	4	1		

Continued on next page...

Continued from previous page...

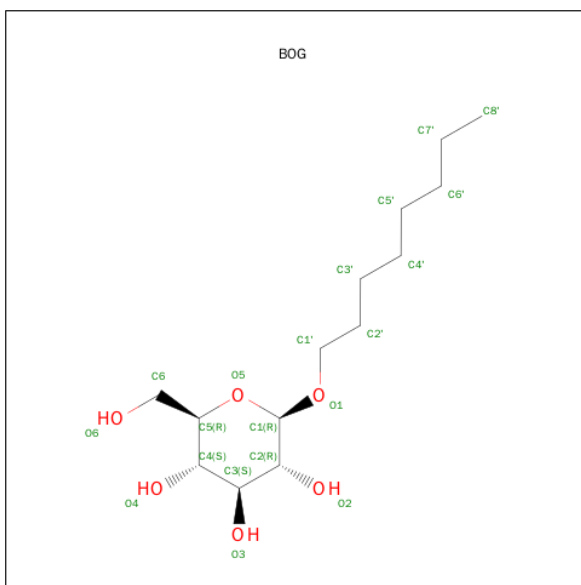
Mol	Chain	Residues	Atoms			ZeroOcc	AltConf
2	A	1	Total	O	S	0	0
			5	4	1		
2	A	1	Total	O	S	0	0
			5	4	1		
2	A	1	Total	O	S	0	0
			5	4	1		
2	B	1	Total	O	S	0	0
			5	4	1		
2	B	1	Total	O	S	0	0
			5	4	1		
2	B	1	Total	O	S	0	0
			5	4	1		

- Molecule 3 is GLYCEROL (three-letter code: GOL) (formula: $C_3H_8O_3$).



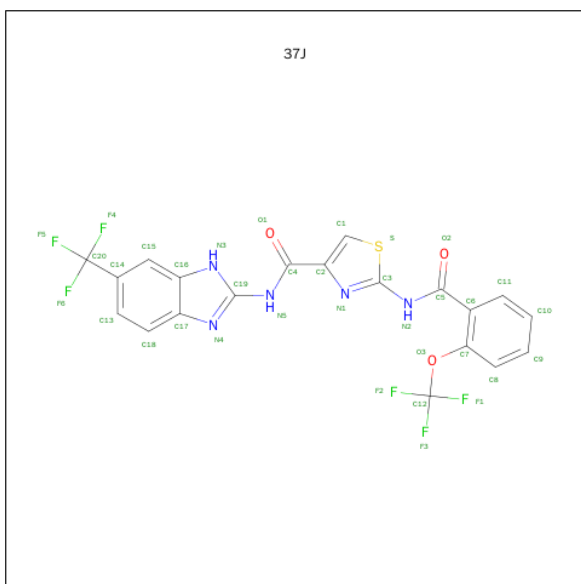
Mol	Chain	Residues	Atoms			ZeroOcc	AltConf
3	A	1	Total	C	O	0	0
			6	3	3		
3	B	1	Total	C	O	0	0
			6	3	3		
3	B	1	Total	C	O	0	0
			6	3	3		

- Molecule 4 is SUGAR (B-OCTYLGLUCOSIDE) (three-letter code: BOG) (formula: $C_{14}H_{28}O_6$).



Mol	Chain	Residues	Atoms			ZeroOcc	AltConf
4	A	1	Total	C	O	0	0
			20	14	6		
4	A	1	Total	C	O	0	0
			20	14	6		

- Molecule 5 is 2-{[2-(trifluoromethoxy)benzoyl]amino}-N-[6-(trifluoromethyl)-1H-benzimidazol-2-yl]-1,3-thiazole-4-carboxamide (three-letter code: 37J) (formula: C₂₀H₁₁F₆N₅O₃S).



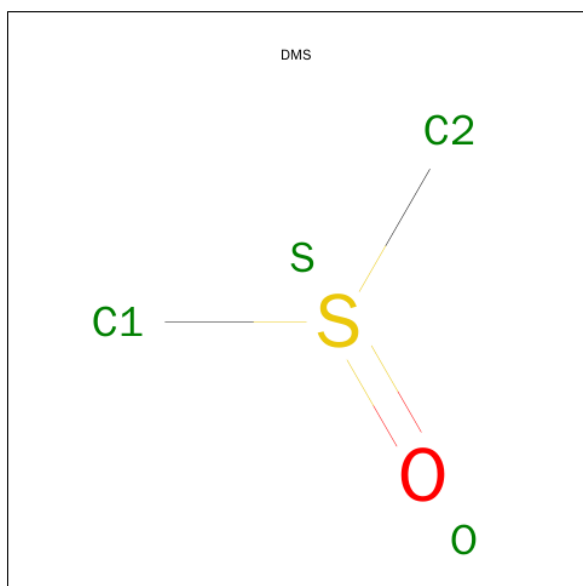
Mol	Chain	Residues	Atoms						ZeroOcc	AltConf
5	A	1	Total	C	F	N	O	S	0	0
			35	20	6	5	3	1		

Continued on next page...

Continued from previous page...

Mol	Chain	Residues	Atoms						ZeroOcc	AltConf
5	B	1	Total	C	F	N	O	S	0	0
			35	20	6	5	3	1		

- Molecule 6 is DIMETHYL SULFOXIDE (three-letter code: DMS) (formula: C₂H₆OS).



Mol	Chain	Residues	Atoms				ZeroOcc	AltConf
6	B	1	Total	C	O	S	0	0
			4	2	1	1		

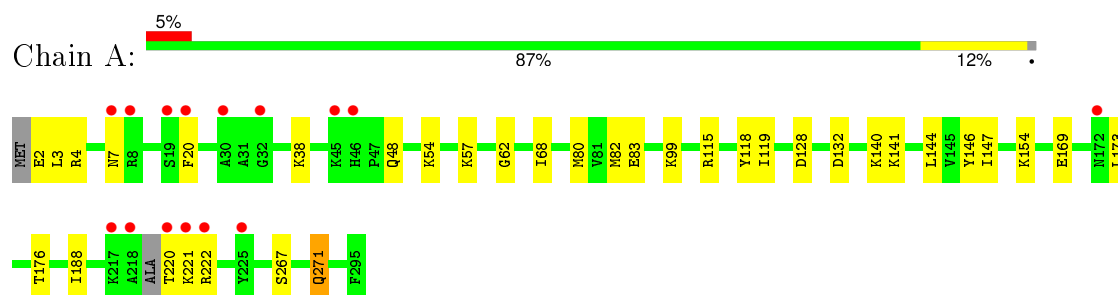
- Molecule 7 is water.

Mol	Chain	Residues	Atoms		ZeroOcc	AltConf
7	A	426	Total	O	0	0
			426	426		
7	B	411	Total	O	0	0
			411	411		

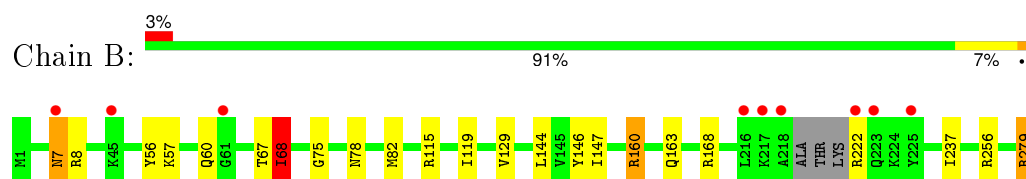
3 Residue-property plots [i](#)

These plots are drawn for all protein, RNA and DNA chains in the entry. The first graphic for a chain summarises the proportions of errors displayed in the second graphic. The second graphic shows the sequence view annotated by issues in geometry and electron density. Residues are color-coded according to the number of geometric quality criteria for which they contain at least one outlier: green = 0, yellow = 1, orange = 2 and red = 3 or more. A red dot above a residue indicates a poor fit to the electron density ($RSRZ > 2$). Stretches of 2 or more consecutive residues without any outlier are shown as a green connector. Residues present in the sample, but not in the model, are shown in grey.

- Molecule 1: Casein kinase I isoform delta



- Molecule 1: Casein kinase I isoform delta



4 Data and refinement statistics

Property	Value	Source
Space group	P 1 21 1	Depositor
Cell constants a, b, c, α , β , γ	52.04Å 134.72Å 56.84Å 90.00° 99.68° 90.00°	Depositor
Resolution (Å)	19.73 – 1.70 19.73 – 1.70	Depositor EDS
% Data completeness (in resolution range)	97.7 (19.73-1.70) 97.7 (19.73-1.70)	Depositor EDS
R_{merge}	(Not available)	Depositor
R_{sym}	(Not available)	Depositor
$\langle I/\sigma(I) \rangle$ ¹	1.62 (at 1.70Å)	Xtriage
Refinement program	REFMAC 5.8.0073	Depositor
R, R_{free}	0.163 , 0.205 0.175 , 0.211	Depositor DCC
R_{free} test set	4085 reflections (5.20%)	DCC
Wilson B-factor (Å ²)	15.2	Xtriage
Anisotropy	0.190	Xtriage
Bulk solvent k_{sol} (e/Å ³), B_{sol} (Å ²)	0.39 , 55.1	EDS
Estimated twinning fraction	No twinning to report.	Xtriage
L-test for twinning ²	$\langle L \rangle = 0.48$, $\langle L^2 \rangle = 0.31$	Xtriage
Outliers	0 of 82575 reflections	Xtriage
F_o, F_c correlation	0.96	EDS
Total number of atoms	5908	wwPDB-VP
Average B, all atoms (Å ²)	30.0	wwPDB-VP

Xtriage's analysis on translational NCS is as follows: *The largest off-origin peak in the Patterson function is 5.67% of the height of the origin peak. No significant pseudotranslation is detected.*

¹Intensities estimated from amplitudes.

²Theoretical values of $\langle |L| \rangle$, $\langle L^2 \rangle$ for acentric reflections are 0.5, 0.375 respectively for untwinned datasets, and 0.333, 0.2 for perfectly twinned datasets.

5 Model quality [i](#)

5.1 Standard geometry [i](#)

Bond lengths and bond angles in the following residue types are not validated in this section: GOL, 37J, DMS, SO4, BOG

The Z score for a bond length (or angle) is the number of standard deviations the observed value is removed from the expected value. A bond length (or angle) with $|Z| > 5$ is considered an outlier worth inspection. RMSZ is the root-mean-square of all Z scores of the bond lengths (or angles).

Mol	Chain	Bond lengths		Bond angles	
		RMSZ	# $ Z > 5$	RMSZ	# $ Z > 5$
1	A	0.63	0/2532	0.81	2/3401 (0.1%)
1	B	0.64	0/2544	0.80	3/3416 (0.1%)
All	All	0.64	0/5076	0.80	5/6817 (0.1%)

There are no bond length outliers.

All (5) bond angle outliers are listed below:

Mol	Chain	Res	Type	Atoms	Z	Observed(°)	Ideal(°)
1	A	115	ARG	NE-CZ-NH2	-8.50	116.05	120.30
1	A	115	ARG	NE-CZ-NH1	6.95	123.77	120.30
1	B	68[A]	ILE	CG1-CB-CG2	-6.38	97.36	111.40
1	B	68[B]	ILE	CG1-CB-CG2	-6.38	97.36	111.40
1	B	115	ARG	NE-CZ-NH2	-5.28	117.66	120.30

There are no chirality outliers.

There are no planarity outliers.

5.2 Too-close contacts [i](#)

In the following table, the Non-H and H(model) columns list the number of non-hydrogen atoms and hydrogen atoms in the chain respectively. The H(added) column lists the number of hydrogen atoms added and optimized by MolProbity. The Clashes column lists the number of clashes within the asymmetric unit, whereas Symm-Clashes lists symmetry related clashes.

Mol	Chain	Non-H	H(model)	H(added)	Clashes	Symm-Clashes
1	A	2444	0	2472	30	0
1	B	2455	0	2490	22	0
2	A	20	0	0	2	0
2	B	20	0	0	1	0

Continued on next page...

Continued from previous page...

Mol	Chain	Non-H	H(model)	H(added)	Clashes	Symm-Clashes
3	A	6	0	8	1	0
3	B	12	0	16	0	0
4	A	40	0	54	0	0
5	A	35	0	11	1	0
5	B	35	0	11	1	0
6	B	4	0	6	0	0
7	A	426	0	0	10	2
7	B	411	0	0	13	2
All	All	5908	0	5068	56	2

The all-atom clashscore is defined as the number of clashes found per 1000 atoms (including hydrogen atoms). The all-atom clashscore for this structure is 6.

All (56) close contacts within the same asymmetric unit are listed below, sorted by their clash magnitude.

Atom-1	Atom-2	Interatomic distance (Å)	Clash overlap (Å)
1:A:68[B]:ILE:CG2	1:A:80[B]:MET:HE2	1.76	1.15
1:A:68[B]:ILE:HG23	1:A:80[B]:MET:HE2	1.17	1.08
1:A:68[B]:ILE:CG2	1:A:80[B]:MET:CE	2.54	0.85
1:A:68[B]:ILE:HG23	1:A:80[B]:MET:CE	2.06	0.85
1:A:2:GLU:N	7:A:1101:HOH:O	2.12	0.82
1:B:78:ASN:OD1	7:B:1101:HOH:O	1.98	0.81
1:B:129:VAL:HG23	7:B:1505:HOH:O	1.80	0.81
1:B:163:GLN:HG2	7:B:1396:HOH:O	1.83	0.77
1:B:68[A]:ILE:HG12	1:B:82:MET:SD	2.25	0.77
1:A:221:LYS:N	1:A:222:ARG:HA	2.03	0.72
1:B:68[B]:ILE:HG23	1:B:82:MET:SD	2.34	0.68
1:B:8:ARG:HG3	7:B:1198:HOH:O	1.94	0.66
1:A:267[B]:SER:OG	2:A:1004:SO4:O4	2.07	0.65
1:B:75:GLY:O	7:B:1389:HOH:O	2.14	0.65
1:A:68[B]:ILE:HG21	1:A:80[B]:MET:CE	2.25	0.64
1:A:99:LYS:NZ	7:A:1357:HOH:O	2.33	0.62
3:A:1005:GOL:H11	7:A:1265:HOH:O	1.99	0.61
1:B:7:ASN:HA	7:B:1103:HOH:O	2.00	0.61
1:B:56:TYR:O	1:B:60:GLN:HG2	2.01	0.60
1:B:279[A]:ARG:NH1	7:B:1406:HOH:O	2.34	0.60
1:B:7:ASN:N	7:B:1103:HOH:O	2.31	0.57
1:B:57:LYS:HA	1:B:68[B]:ILE:HD11	1.88	0.56
1:A:154:LYS:HE2	7:A:1476:HOH:O	2.07	0.54
1:A:128:ASP:OD1	1:A:176[B]:THR:HG23	2.07	0.53
1:A:271:GLN:NE2	2:A:1004:SO4:O1	2.43	0.52

Continued on next page...

Continued from previous page...

Atom-1	Atom-2	Interatomic distance (Å)	Clash overlap (Å)
1:B:7:ASN:CA	7:B:1103:HOH:O	2.60	0.49
1:B:295:PHE:C	7:B:1249:HOH:O	2.50	0.49
1:A:68[B]:ILE:HG23	1:A:82:MET:SD	2.52	0.49
1:A:2:GLU:OE2	1:A:4:ARG:NH1	2.43	0.49
1:A:169:GLU:HG2	1:A:188:ILE:HD12	1.93	0.48
1:B:144[B]:LEU:HD23	1:B:146:TYR:CE1	2.49	0.48
1:A:132:ASP:OD1	7:A:1322:HOH:O	2.20	0.48
2:B:1004:SO4:O1	7:B:1102:HOH:O	2.19	0.48
1:B:119:ILE:CD1	1:B:147:ILE:HD13	2.44	0.47
1:A:68[B]:ILE:HG21	1:A:80[B]:MET:HE3	1.95	0.47
1:B:144[B]:LEU:HD23	1:B:146:TYR:CZ	2.49	0.47
1:A:20:PHE:O	1:A:38:LYS:HE2	2.15	0.47
5:B:1008:37J:O2	5:B:1008:37J:S	2.73	0.46
1:A:144[A]:LEU:HD23	1:A:146:TYR:CE1	2.51	0.46
5:A:1007:37J:S	5:A:1007:37J:O2	2.73	0.46
1:A:54:LYS:HG3	7:A:1151:HOH:O	2.16	0.46
1:A:99:LYS:CE	7:A:1357:HOH:O	2.66	0.43
1:B:60:GLN:OE1	1:B:67:THR:HA	2.18	0.43
1:A:119:ILE:CD1	1:A:147:ILE:HD13	2.49	0.42
1:A:2:GLU:CA	7:A:1101:HOH:O	2.66	0.42
1:A:141:LYS:HD2	1:A:144[B]:LEU:HD12	2.02	0.42
1:A:7[A]:ASN:ND2	7:A:1452:HOH:O	2.52	0.42
1:A:57:LYS:HG3	1:A:68[B]:ILE:CD1	2.50	0.42
1:A:48:GLN:NE2	7:A:1296:HOH:O	2.42	0.42
1:B:222:ARG:NE	1:B:222:ARG:HA	2.35	0.42
1:B:129:VAL:CG2	7:B:1505:HOH:O	2.54	0.41
1:A:144[A]:LEU:HD23	1:A:146:TYR:CZ	2.55	0.41
1:B:160:ARG:NH2	7:B:1107:HOH:O	2.53	0.41
1:A:62:GLY:HA3	1:A:118:TYR:CZ	2.56	0.41
1:B:237:ILE:HD11	1:B:256[A]:ARG:NE	2.36	0.40
1:A:221:LYS:N	1:A:222:ARG:CA	2.78	0.40

All (2) symmetry-related close contacts are listed below. The label for Atom-2 includes the symmetry operator and encoded unit-cell translations to be applied.

Atom-1	Atom-2	Interatomic distance (Å)	Clash overlap (Å)
7:A:1170:HOH:O	7:B:1161:HOH:O[2_656]	2.08	0.12
7:A:1177:HOH:O	7:B:1102:HOH:O[2_555]	2.12	0.08

5.3 Torsion angles

5.3.1 Protein backbone

In the following table, the Percentiles column shows the percent Ramachandran outliers of the chain as a percentile score with respect to all X-ray entries followed by that with respect to entries of similar resolution.

The Analysed column shows the number of residues for which the backbone conformation was analysed, and the total number of residues.

Mol	Chain	Analysed	Favoured	Allowed	Outliers	Percentiles	
1	A	300/295 (102%)	293 (98%)	7 (2%)	0	100	100
1	B	299/295 (101%)	293 (98%)	5 (2%)	1 (0%)	46	26
All	All	599/590 (102%)	586 (98%)	12 (2%)	1 (0%)	52	32

All (1) Ramachandran outliers are listed below:

Mol	Chain	Res	Type
1	B	7	ASN

5.3.2 Protein sidechains

In the following table, the Percentiles column shows the percent sidechain outliers of the chain as a percentile score with respect to all X-ray entries followed by that with respect to entries of similar resolution.

The Analysed column shows the number of residues for which the sidechain conformation was analysed, and the total number of residues.

Mol	Chain	Analysed	Rotameric	Outliers	Percentiles	
1	A	269/259 (104%)	262 (97%)	7 (3%)	54	32
1	B	268/259 (104%)	261 (97%)	7 (3%)	54	32
All	All	537/518 (104%)	523 (97%)	14 (3%)	61	32

All (14) residues with a non-rotameric sidechain are listed below:

Mol	Chain	Res	Type
1	A	3	LEU
1	A	83[A]	GLU
1	A	83[B]	GLU
1	A	140	LYS
1	A	173	LEU

Continued on next page...

Continued from previous page...

Mol	Chain	Res	Type
1	A	220	THR
1	A	271	GLN
1	B	68[A]	ILE
1	B	68[B]	ILE
1	B	160	ARG
1	B	168	ARG
1	B	279[A]	ARG
1	B	279[B]	ARG
1	B	283	SER

Some sidechains can be flipped to improve hydrogen bonding and reduce clashes. All (7) such sidechains are listed below:

Mol	Chain	Res	Type
1	A	78	ASN
1	A	172	ASN
1	A	190	GLN
1	B	78	ASN
1	B	143	ASN
1	B	190	GLN
1	B	278	HIS

5.3.3 RNA [i](#)

There are no RNA molecules in this entry.

5.4 Non-standard residues in protein, DNA, RNA chains [i](#)

There are no non-standard protein/DNA/RNA residues in this entry.

5.5 Carbohydrates [i](#)

There are no carbohydrates in this entry.

5.6 Ligand geometry [i](#)

16 ligands are modelled in this entry.

In the following table, the Counts columns list the number of bonds (or angles) for which Mogul statistics could be retrieved, the number of bonds (or angles) that are observed in the model and

the number of bonds (or angles) that are defined in the chemical component dictionary. The Link column lists molecule types, if any, to which the group is linked. The Z score for a bond length (or angle) is the number of standard deviations the observed value is removed from the expected value. A bond length (or angle) with $|Z| > 2$ is considered an outlier worth inspection. RMSZ is the root-mean-square of all Z scores of the bond lengths (or angles).

Mol	Type	Chain	Res	Link	Bond lengths			Bond angles		
					Counts	RMSZ	$\# Z > 2$	Counts	RMSZ	$\# Z > 2$
2	SO4	A	1001	-	4,4,4	0.47	0	6,6,6	0.34	0
2	SO4	A	1002	-	4,4,4	0.38	0	6,6,6	0.54	0
2	SO4	A	1003	-	4,4,4	0.42	0	6,6,6	0.19	0
2	SO4	A	1004	-	4,4,4	0.08	0	6,6,6	0.39	0
3	GOL	A	1005	-	5,5,5	0.20	0	5,5,5	0.29	0
4	BOG	A	1006	-	20,20,20	0.67	1 (5%)	25,25,25	3.13	6 (24%)
5	37J	A	1007	-	31,38,38	1.47	2 (6%)	36,57,57	1.64	9 (25%)
4	BOG	A	1008	-	20,20,20	0.60	1 (5%)	25,25,25	2.56	4 (16%)
2	SO4	B	1001	-	4,4,4	0.45	0	6,6,6	0.74	0
2	SO4	B	1002	-	4,4,4	0.38	0	6,6,6	0.50	0
2	SO4	B	1003	-	4,4,4	0.46	0	6,6,6	0.56	0
2	SO4	B	1004	-	4,4,4	0.95	0	6,6,6	0.77	0
3	GOL	B	1005	-	5,5,5	0.20	0	5,5,5	0.52	0
3	GOL	B	1006	-	5,5,5	0.40	0	5,5,5	0.37	0
6	DMS	B	1007	-	3,3,3	0.50	0	3,3,3	0.69	0
5	37J	B	1008	-	31,38,38	1.38	3 (9%)	36,57,57	1.70	11 (30%)

In the following table, the Chirals column lists the number of chiral outliers, the number of chiral centers analysed, the number of these observed in the model and the number defined in the chemical component dictionary. Similar counts are reported in the Torsion and Rings columns. '-' means no outliers of that kind were identified.

Mol	Type	Chain	Res	Link	Chirals	Torsions	Rings
2	SO4	A	1001	-	-	0/0/0/0	0/0/0/0
2	SO4	A	1002	-	-	0/0/0/0	0/0/0/0
2	SO4	A	1003	-	-	0/0/0/0	0/0/0/0
2	SO4	A	1004	-	-	0/0/0/0	0/0/0/0
3	GOL	A	1005	-	-	0/4/4/4	0/0/0/0
4	BOG	A	1006	-	1/1/5/5	0/11/31/31	0/1/1/1
5	37J	A	1007	-	-	0/15/27/27	0/4/4/4
4	BOG	A	1008	-	1/1/5/5	0/11/31/31	0/1/1/1
2	SO4	B	1001	-	-	0/0/0/0	0/0/0/0
2	SO4	B	1002	-	-	0/0/0/0	0/0/0/0
2	SO4	B	1003	-	-	0/0/0/0	0/0/0/0
2	SO4	B	1004	-	-	0/0/0/0	0/0/0/0
3	GOL	B	1005	-	-	0/4/4/4	0/0/0/0

Continued on next page...

Continued from previous page...

Mol	Type	Chain	Res	Link	Chirals	Torsions	Rings
3	GOL	B	1006	-	-	0/4/4/4	0/0/0/0
6	DMS	B	1007	-	-	0/0/0/0	0/0/0/0
5	37J	B	1008	-	-	0/15/27/27	0/4/4/4

All (7) bond length outliers are listed below:

Mol	Chain	Res	Type	Atoms	Z	Observed(Å)	Ideal(Å)
5	A	1007	37J	C1-S	-5.14	1.62	1.70
5	B	1008	37J	C1-S	-5.02	1.62	1.70
5	A	1007	37J	C18-C17	-3.26	1.35	1.41
5	B	1008	37J	C18-C17	-2.25	1.37	1.41
5	B	1008	37J	C15-C16	-2.04	1.38	1.41
4	A	1008	BOG	O1-C1	2.03	1.43	1.40
4	A	1006	BOG	O1-C1	2.21	1.44	1.40

All (30) bond angle outliers are listed below:

Mol	Chain	Res	Type	Atoms	Z	Observed(°)	Ideal(°)
4	A	1006	BOG	C1-O5-C5	-5.00	104.05	113.75
5	A	1007	37J	O2-C5-N2	-3.68	115.60	123.68
5	B	1008	37J	C13-C18-C17	-3.33	117.27	120.88
5	B	1008	37J	C7-C6-C5	-3.32	120.69	126.18
4	A	1006	BOG	O5-C5-C4	-3.28	103.52	109.68
5	B	1008	37J	C19-N5-C4	-3.22	122.13	128.18
5	A	1007	37J	C7-C6-C5	-3.09	121.08	126.18
5	B	1008	37J	O2-C5-N2	-3.06	116.95	123.68
5	A	1007	37J	C13-C18-C17	-2.88	117.75	120.88
5	B	1008	37J	C2-C1-S	-2.59	108.61	111.79
5	A	1007	37J	C14-C15-C16	-2.50	116.95	120.80
5	A	1007	37J	C19-N4-C17	-2.49	103.12	106.64
5	A	1007	37J	C2-C1-S	-2.44	108.80	111.79
5	B	1008	37J	C14-C15-C16	-2.21	117.39	120.80
5	B	1008	37J	C19-N4-C17	-2.08	103.71	106.64
5	B	1008	37J	O1-C4-N5	-2.05	119.18	123.68
4	A	1006	BOG	C6-C5-C4	2.19	118.41	113.02
5	A	1007	37J	C13-C14-C15	2.24	121.17	117.75
4	A	1008	BOG	O5-C5-C6	2.30	112.17	106.36
4	A	1006	BOG	O5-C1-C2	2.50	115.41	110.28
5	B	1008	37J	C13-C14-C15	2.86	122.11	117.75
5	A	1007	37J	O2-C5-C6	2.89	126.50	120.95
5	B	1008	37J	C2-C4-N5	3.11	121.37	113.85
5	B	1008	37J	O2-C5-C6	3.30	127.28	120.95

Continued on next page...

Continued from previous page...

Mol	Chain	Res	Type	Atoms	Z	Observed(°)	Ideal(°)
5	A	1007	37J	C2-C4-N5	3.39	122.05	113.85
4	A	1006	BOG	O5-C1-O1	3.83	119.28	110.05
4	A	1008	BOG	O5-C1-O1	4.11	119.94	110.05
4	A	1008	BOG	O5-C1-C2	4.29	119.08	110.28
4	A	1008	BOG	O1-C1-C2	10.20	120.92	108.04
4	A	1006	BOG	O1-C1-C2	12.92	124.36	108.04

All (2) chirality outliers are listed below:

Mol	Chain	Res	Type	Atom
4	A	1008	BOG	C1
4	A	1006	BOG	C1

There are no torsion outliers.

There are no ring outliers.

5 monomers are involved in 6 short contacts:

Mol	Chain	Res	Type	Clashes	Symm-Clashes
2	A	1004	SO4	2	0
3	A	1005	GOL	1	0
5	A	1007	37J	1	0
2	B	1004	SO4	1	0
5	B	1008	37J	1	0

5.7 Other polymers [i](#)

There are no such residues in this entry.

5.8 Polymer linkage issues [i](#)

There are no chain breaks in this entry.

6 Fit of model and data

6.1 Protein, DNA and RNA chains

In the following table, the column labelled ‘#RSRZ> 2’ contains the number (and percentage) of RSRZ outliers, followed by percent RSRZ outliers for the chain as percentile scores relative to all X-ray entries and entries of similar resolution. The OWAB column contains the minimum, median, 95th percentile and maximum values of the occupancy-weighted average B-factor per residue. The column labelled ‘Q< 0.9’ lists the number of (and percentage) of residues with an average occupancy less than 0.9.

Mol	Chain	Analysed	<RSRZ>	#RSRZ>2	OWAB(Å ²)	Q<0.9
1	A	293/295 (99%)	-0.00	15 (5%) 32 34	15, 23, 51, 92	0
1	B	292/295 (98%)	0.00	9 (3%) 52 57	15, 23, 52, 99	0
All	All	585/590 (99%)	0.00	24 (4%) 41 44	15, 23, 52, 99	0

All (24) RSRZ outliers are listed below:

Mol	Chain	Res	Type	RSRZ
1	A	221	LYS	6.4
1	B	217	LYS	6.2
1	A	220	THR	5.1
1	B	218	ALA	4.8
1	A	217	LYS	4.4
1	B	223	GLN	4.3
1	B	225[A]	TYR	4.0
1	A	46	HIS	4.0
1	B	222	ARG	3.7
1	B	7	ASN	3.1
1	A	45	LYS	3.0
1	B	45	LYS	3.0
1	A	225	TYR	2.9
1	A	218	ALA	2.9
1	A	7[A]	ASN	2.7
1	A	19	SER	2.5
1	A	20	PHE	2.4
1	B	216	LEU	2.4
1	A	222	ARG	2.4
1	B	61	GLY	2.4
1	A	30	ALA	2.3
1	A	172	ASN	2.2
1	A	8	ARG	2.1
1	A	32	GLY	2.1

6.2 Non-standard residues in protein, DNA, RNA chains [i](#)

There are no non-standard protein/DNA/RNA residues in this entry.

6.3 Carbohydrates [i](#)

There are no carbohydrates in this entry.

6.4 Ligands [i](#)

In the following table, the Atoms column lists the number of modelled atoms in the group and the number defined in the chemical component dictionary. LLDF column lists the quality of electron density of the group with respect to its neighbouring residues in protein, DNA or RNA chains. The B-factors column lists the minimum, median, 95th percentile and maximum values of B factors of atoms in the group. The column labelled 'Q< 0.9' lists the number of atoms with occupancy less than 0.9.

Mol	Type	Chain	Res	Atoms	RSCC	RSR	LLDF	B-factors(Å ²)	Q<0.9
4	BOG	A	1008	20/20	0.58	0.26	6.46	43,80,92,93	0
2	SO4	B	1004	5/5	0.82	0.17	4.19	20,28,40,44	5
4	BOG	A	1006	20/20	0.70	0.19	3.23	38,59,73,80	0
2	SO4	A	1004	5/5	0.98	0.11	2.27	27,30,33,36	5
3	GOL	A	1005	6/6	0.80	0.18	2.26	34,60,69,69	0
2	SO4	B	1003	5/5	0.94	0.12	1.47	21,22,25,28	5
3	GOL	B	1006	6/6	0.90	0.22	1.37	25,44,61,62	0
6	DMS	B	1007	4/4	0.92	0.17	1.00	43,57,63,64	0
2	SO4	A	1003	5/5	0.97	0.08	-0.73	25,28,29,31	5
5	37J	A	1007	35/35	0.97	0.07	-1.20	14,24,34,40	0
5	37J	B	1008	35/35	0.97	0.07	-1.30	16,23,43,45	0
2	SO4	A	1002	5/5	0.99	0.06	-1.33	33,37,43,45	0
2	SO4	B	1002	5/5	0.98	0.05	-1.77	39,44,49,50	0
3	GOL	B	1005	6/6	0.92	0.08	-	40,43,48,49	0
2	SO4	B	1001	5/5	0.98	0.14	-	32,33,38,44	0
2	SO4	A	1001	5/5	0.98	0.08	-	32,34,36,37	0

6.5 Other polymers [i](#)

There are no such residues in this entry.