



Full wwPDB X-ray Structure Validation Report ⓘ

Feb 1, 2016 – 01:32 PM GMT

PDB ID : 3TYL
Title : Structure of neuronal nitric oxide synthase heme domain in complex with 6-((3S,4S)-4-(2-((2-fluorobenzyl)amino)ethoxy)pyrrolidin-3-yl)methyl)-4-methylpyridin-2-amine
Authors : Li, H.; Poulos, T.L.
Deposited on : 2011-09-26
Resolution : 1.90 Å(reported)

This is a Full wwPDB X-ray Structure Validation Report for a publicly released PDB entry.
We welcome your comments at validation@mail.wwpdb.org
A user guide is available at
<http://wwpdb.org/validation/2016/XrayValidationReportHelp>
with specific help available everywhere you see the ⓘ symbol.

The following versions of software and data (see [references ⓘ](#)) were used in the production of this report:

MolProbity : 4.02b-467
Mogul : 1.7 (RC4), CSD as536be (2015)
Xtriage (Phenix) : 1.9-1692
EDS : rb-20026688
Percentile statistics : 20151230.v01 (using entries in the PDB archive December 30th 2015)
Refmac : 5.8.0135
CCP4 : 6.5.0
Ideal geometry (proteins) : Engh & Huber (2001)
Ideal geometry (DNA, RNA) : Parkinson et al. (1996)
Validation Pipeline (wwPDB-VP) : trunk26865

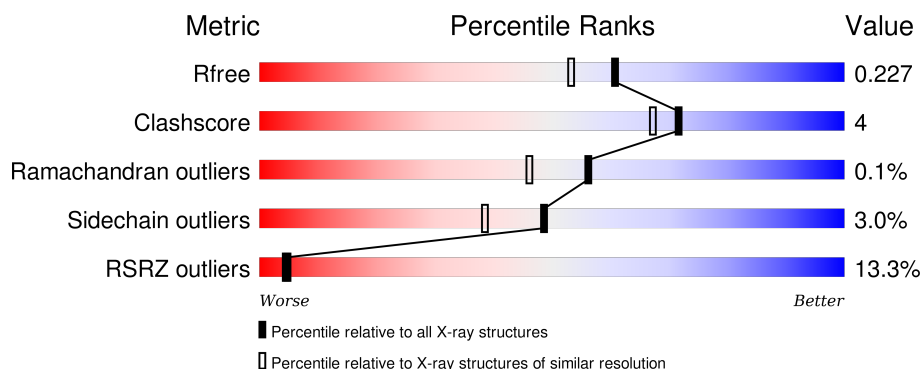
1 Overall quality at a glance

The following experimental techniques were used to determine the structure:

X-RAY DIFFRACTION

The reported resolution of this entry is 1.90 Å.

Percentile scores (ranging between 0-100) for global validation metrics of the entry are shown in the following graphic. The table shows the number of entries on which the scores are based.



Metric	Whole archive (#Entries)	Similar resolution (#Entries, resolution range(Å))
R_{free}	91344	4755 (1.90-1.90)
Clashscore	102246	5398 (1.90-1.90)
Ramachandran outliers	100387	5338 (1.90-1.90)
Sidechain outliers	100360	5339 (1.90-1.90)
RSRZ outliers	91569	4766 (1.90-1.90)

The table below summarises the geometric issues observed across the polymeric chains and their fit to the electron density. The red, orange, yellow and green segments on the lower bar indicate the fraction of residues that contain outliers for ≥ 3 , 2, 1 and 0 types of geometric quality criteria. A grey segment represents the fraction of residues that are not modelled. The numeric value for each fraction is indicated below the corresponding segment, with a dot representing fractions $\leq 5\%$. The upper red bar (where present) indicates the fraction of residues that have poor fit to the electron density. The numeric value is given above the bar.

Mol	Chain	Length	Quality of chain
1	A	422	
1	B	422	

The following table lists non-polymeric compounds, carbohydrate monomers and non-standard residues in protein, DNA, RNA chains that are outliers for geometric or electron-density-fit criteria:

Mol	Type	Chain	Res	Chirality	Geometry	Clashes	Electron density
4	ACT	A	860	-	-	-	X

2 Entry composition [i](#)

There are 7 unique types of molecules in this entry. The entry contains 7266 atoms, of which 0 are hydrogens and 0 are deuteriums.

In the tables below, the ZeroOcc column contains the number of atoms modelled with zero occupancy, the AltConf column contains the number of residues with at least one atom in alternate conformation and the Trace column contains the number of residues modelled with at most 2 atoms.

- Molecule 1 is a protein called Nitric oxide synthase, brain.

Mol	Chain	Residues	Atoms					ZeroOcc	AltConf	Trace
1	A	409	Total	C	N	O	S	0	2	0
			3342	2138	573	610	21			
1	B	411	Total	C	N	O	S	0	5	0
			3366	2154	574	616	22			

- Molecule 2 is PROTOPORPHYRIN IX CONTAINING FE (three-letter code: HEM) (formula: $C_{34}H_{32}FeN_4O_4$).



Mol	Chain	Residues	Atoms					ZeroOcc	AltConf
2	A	1	Total	C	Fe	N	O	0	0
			43	34	1	4	4		
2	B	1	Total	C	Fe	N	O	0	0
			43	34	1	4	4		

- Molecule 3 is 5,6,7,8-TETRAHYDROBIOPTERIN (three-letter code: H4B) (formula: $C_9H_{15}N_5O_3$).



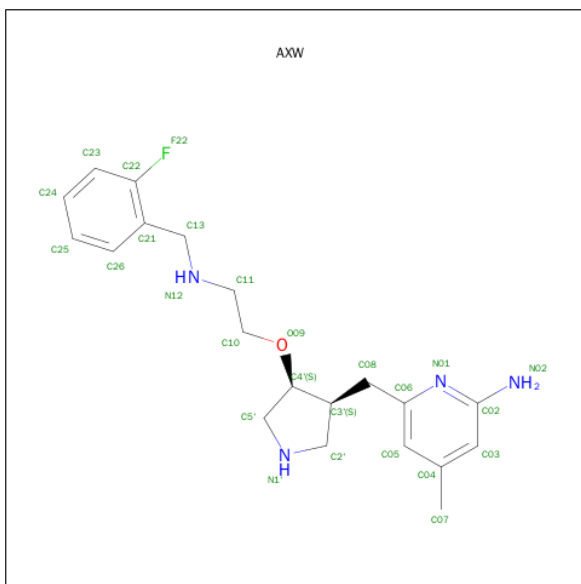
Mol	Chain	Residues	Atoms				ZeroOcc	AltConf
3	A	1	Total 17	C 9	N 5	O 3	0	0
3	B	1	Total 17	C 9	N 5	O 3	0	0

- Molecule 4 is ACETATE ION (three-letter code: ACT) (formula: $\text{C}_2\text{H}_3\text{O}_2$).



Mol	Chain	Residues	Atoms	ZeroOcc	AltConf
4	A	1	Total C O 4 2 2	0	0
4	B	1	Total C O 4 2 2	0	0

- Molecule 5 is 6-[[[(3S,4S)-4-{2-[(2-FLUOROBENZYL)AMINO]ETHOXY}PYRROLIDIN-3-YL]METHYL]-4-METHYLPYRIDIN-2-AMINE (three-letter code: AXW) (formula: C₂₀H₂₇FN₄O).



Mol	Chain	Residues	Atoms					ZeroOcc	AltConf
5	A	1	Total	C	F	N	O	0	0
			26	20	1	4	1		
5	B	1	Total	C	F	N	O	0	0
			26	20	1	4	1		

- Molecule 6 is ZINC ION (three-letter code: ZN) (formula: Zn).

Mol	Chain	Residues	Atoms		ZeroOcc	AltConf
6	A	1	Total	Zn	0	0
			1	1		

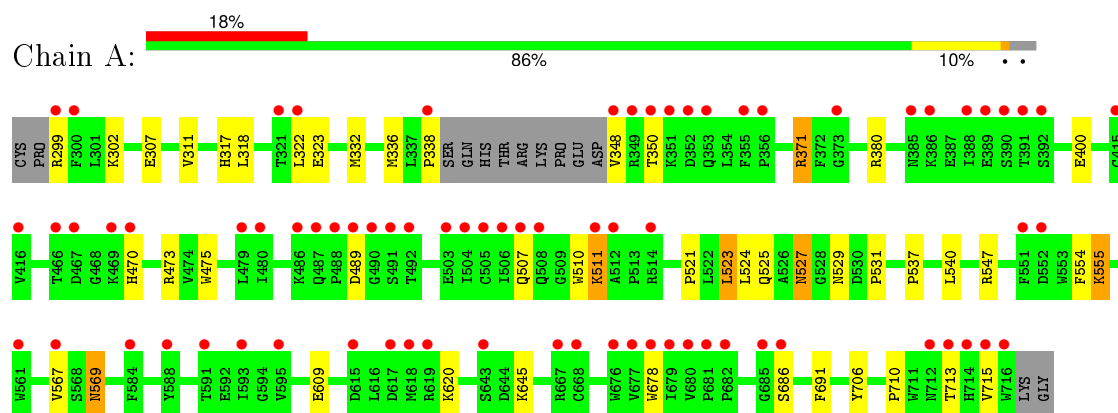
- Molecule 7 is water.

Mol	Chain	Residues	Atoms		ZeroOcc	AltConf
7	A	151	Total	O	0	0
			151	151		
7	B	226	Total	O	0	0
			226	226		

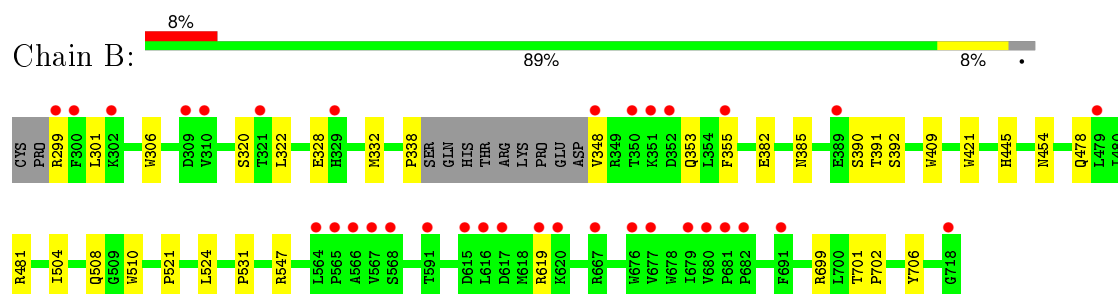
3 Residue-property plots [i](#)

These plots are drawn for all protein, RNA and DNA chains in the entry. The first graphic for a chain summarises the proportions of errors displayed in the second graphic. The second graphic shows the sequence view annotated by issues in geometry and electron density. Residues are color-coded according to the number of geometric quality criteria for which they contain at least one outlier: green = 0, yellow = 1, orange = 2 and red = 3 or more. A red dot above a residue indicates a poor fit to the electron density ($RSRZ > 2$). Stretches of 2 or more consecutive residues without any outlier are shown as a green connector. Residues present in the sample, but not in the model, are shown in grey.

- Molecule 1: Nitric oxide synthase, brain



- Molecule 1: Nitric oxide synthase, brain



4 Data and refinement statistics

Property	Value	Source
Space group	P 21 21 21	Depositor
Cell constants a, b, c, α , β , γ	51.93Å 110.81Å 164.29Å 90.00° 90.00° 90.00°	Depositor
Resolution (Å)	38.64 – 1.90 37.89 – 1.90	Depositor EDS
% Data completeness (in resolution range)	99.5 (38.64-1.90) 99.5 (37.89-1.90)	Depositor EDS
R_{merge}	0.06	Depositor
R_{sym}	0.06	Depositor
$\langle I/\sigma(I) \rangle$ ¹	3.79 (at 1.89Å)	Xtriage
Refinement program	REFMAC 5.5.0109	Depositor
R, R_{free}	0.179 , 0.211 0.193 , 0.227	Depositor DCC
R_{free} test set	3731 reflections (5.22%)	DCC
Wilson B-factor (Å ²)	34.4	Xtriage
Anisotropy	0.145	Xtriage
Bulk solvent k_{sol} (e/Å ³), B_{sol} (Å ²)	0.36 , 42.2	EDS
Estimated twinning fraction	No twinning to report.	Xtriage
L-test for twinning ²	$\langle L \rangle = 0.49$, $\langle L^2 \rangle = 0.32$	Xtriage
Outliers	0 of 75250 reflections	Xtriage
F_o, F_c correlation	0.96	EDS
Total number of atoms	7266	wwPDB-VP
Average B, all atoms (Å ²)	45.0	wwPDB-VP

Xtriage's analysis on translational NCS is as follows: *The largest off-origin peak in the Patterson function is 5.11% of the height of the origin peak. No significant pseudotranslation is detected.*

¹Intensities estimated from amplitudes.

²Theoretical values of $\langle |L| \rangle$, $\langle L^2 \rangle$ for acentric reflections are 0.5, 0.375 respectively for untwinned datasets, and 0.333, 0.2 for perfectly twinned datasets.

5 Model quality

5.1 Standard geometry

Bond lengths and bond angles in the following residue types are not validated in this section: H4B, HEM, ZN, AXW, ACT

The Z score for a bond length (or angle) is the number of standard deviations the observed value is removed from the expected value. A bond length (or angle) with $|Z| > 5$ is considered an outlier worth inspection. RMSZ is the root-mean-square of all Z scores of the bond lengths (or angles).

Mol	Chain	Bond lengths		Bond angles	
		RMSZ	$\# Z > 5$	RMSZ	$\# Z > 5$
1	A	0.64	0/3438	0.66	0/4664
1	B	0.73	0/3474	0.68	0/4709
All	All	0.69	0/6912	0.67	0/9373

There are no bond length outliers.

There are no bond angle outliers.

There are no chirality outliers.

There are no planarity outliers.

5.2 Too-close contacts

In the following table, the Non-H and H(model) columns list the number of non-hydrogen atoms and hydrogen atoms in the chain respectively. The H(added) column lists the number of hydrogen atoms added and optimized by MolProbity. The Clashes column lists the number of clashes within the asymmetric unit, whereas Symm-Clashes lists symmetry related clashes.

Mol	Chain	Non-H	H(model)	H(added)	Clashes	Symm-Clashes
1	A	3342	0	3253	40	0
1	B	3366	0	3286	19	0
2	A	43	0	30	4	0
2	B	43	0	30	2	0
3	A	17	0	15	0	0
3	B	17	0	15	0	0
4	A	4	0	3	0	0
4	B	4	0	3	0	0
5	A	26	0	27	3	0
5	B	26	0	27	0	0
6	A	1	0	0	0	0

Continued on next page...

Continued from previous page...

Mol	Chain	Non-H	H(model)	H(added)	Clashes	Symm-Clashes
7	A	151	0	0	4	0
7	B	226	0	0	2	0
All	All	7266	0	6689	59	0

The all-atom clashscore is defined as the number of clashes found per 1000 atoms (including hydrogen atoms). The all-atom clashscore for this structure is 4.

All (59) close contacts within the same asymmetric unit are listed below, sorted by their clash magnitude.

Atom-1	Atom-2	Interatomic distance (Å)	Clash overlap (Å)
1:A:371:ARG:HG3	1:A:371:ARG:HH21	1.43	0.82
2:B:750:HEM:HHC	2:B:750:HEM:HBB2	1.67	0.76
2:A:750:HEM:HMC2	2:A:750:HEM:HBC2	1.65	0.76
1:A:678:TRP:HH2	5:A:800:AXW:H6	1.61	0.65
1:A:307:GLU:HG3	7:B:1003:HOH:O	1.97	0.64
1:B:706:TYR:OH	2:B:750:HEM:O1D	2.10	0.64
1:A:336:MET:CE	1:A:678:TRP:HZ2	2.12	0.64
1:A:336:MET:HE2	1:A:678:TRP:HZ2	1.63	0.64
1:A:371:ARG:CG	1:A:371:ARG:HH21	2.13	0.62
1:A:336:MET:CE	1:A:678:TRP:CZ2	2.83	0.61
1:A:380:ARG:HD3	1:A:400:GLU:OE1	2.00	0.61
1:A:678:TRP:CH2	5:A:800:AXW:H6	2.37	0.59
1:A:523:LEU:HD22	1:A:531:PRO:HB2	1.84	0.58
1:A:336:MET:HE2	1:A:678:TRP:CZ2	2.40	0.57
1:A:371:ARG:HG3	1:A:371:ARG:NH2	2.20	0.55
1:A:336:MET:HE1	1:A:678:TRP:CZ2	2.42	0.54
1:B:382[B]:GLU:OE1	1:B:382[B]:GLU:HA	2.08	0.54
1:B:338:PRO:HG3	7:B:1218:HOH:O	2.09	0.52
1:A:336:MET:HE3	7:A:1014:HOH:O	2.10	0.52
1:A:473:ARG:NH2	1:A:710:PRO:HD3	2.24	0.51
1:A:609:GLU:HG3	7:A:1023:HOH:O	2.09	0.51
1:B:322:LEU:HD13	1:B:699:ARG:HH21	1.75	0.51
1:A:302:LYS:HD3	1:A:311:VAL:CG1	2.42	0.49
1:A:302:LYS:HD3	1:A:311:VAL:HG11	1.94	0.48
1:A:706:TYR:OH	2:A:750:HEM:O1D	2.23	0.48
1:A:336:MET:HG3	1:B:306:TRP:NE1	2.29	0.47
1:B:299:ARG:CZ	1:B:299:ARG:HB3	2.44	0.47
1:A:567:VAL:HG23	5:A:800:AXW:H26	1.97	0.47
2:A:750:HEM:HBB2	2:A:750:HEM:HHC	1.95	0.47
1:A:336:MET:CE	1:A:678:TRP:HE1	2.28	0.47
1:A:332:MET:HE2	1:B:301:LEU:HD13	1.96	0.47

Continued on next page...

Continued from previous page...

Atom-1	Atom-2	Interatomic distance (Å)	Clash overlap (Å)
1:B:391:THR:O	1:B:392:SER:HB2	2.14	0.47
1:A:371:ARG:CG	1:A:371:ARG:NH2	2.71	0.46
1:A:323:GLU:HG2	1:B:328:GLU:HB3	1.97	0.45
1:B:445:HIS:C	1:B:445:HIS:CD2	2.89	0.45
1:A:569:ASN:H	1:A:569:ASN:HD22	1.64	0.45
1:A:475:TRP:HB2	1:A:523:LEU:HB3	1.99	0.44
1:B:478:GLN:HB2	1:B:481:ARG:HG3	1.98	0.44
1:A:686:SER:HA	1:A:691:PHE:CG	2.52	0.44
2:A:750:HEM:CMC	2:A:750:HEM:HBC2	2.42	0.44
1:A:299:ARG:O	1:A:317:HIS:CE1	2.70	0.44
1:B:409:TRP:CE3	1:B:421:TRP:HA	2.52	0.44
1:B:504:ILE:O	1:B:508:GLN:HG2	2.18	0.44
1:A:525:GLN:HG3	1:A:529:ASN:O	2.18	0.44
1:A:336:MET:HG3	1:B:306:TRP:CE2	2.52	0.44
1:A:510:TRP:CE2	1:A:521:PRO:HD3	2.54	0.43
1:A:470:HIS:HB3	1:A:527:ASN:ND2	2.34	0.42
1:A:555:LYS:HB3	1:A:555:LYS:NZ	2.34	0.42
1:B:701:THR:HA	1:B:702:PRO:C	2.40	0.42
1:B:355:PHE:CE1	1:B:385:ASN:HB2	2.55	0.42
1:A:524:LEU:O	1:A:531:PRO:HA	2.20	0.42
1:A:554:PHE:HB3	7:A:1148:HOH:O	2.20	0.42
1:B:510:TRP:CE2	1:B:521:PRO:HD3	2.55	0.41
1:A:537:PRO:HB2	1:A:540:LEU:HG	2.03	0.41
1:A:338:PRO:HG2	7:A:1057:HOH:O	2.20	0.41
1:A:511:LYS:CG	1:A:511:LYS:O	2.69	0.40
1:B:619:ARG:HB2	1:B:619:ARG:HE	1.49	0.40
1:B:524:LEU:O	1:B:531:PRO:HA	2.20	0.40
1:A:299:ARG:HE	1:A:318:LEU:HD13	1.86	0.40

There are no symmetry-related clashes.

5.3 Torsion angles [i](#)

5.3.1 Protein backbone [i](#)

In the following table, the Percentiles column shows the percent Ramachandran outliers of the chain as a percentile score with respect to all X-ray entries followed by that with respect to entries of similar resolution.

The Analysed column shows the number of residues for which the backbone conformation was analysed, and the total number of residues.

Mol	Chain	Analysed	Favoured	Allowed	Outliers	Percentiles	
1	A	407/422 (96%)	396 (97%)	10 (2%)	1 (0%)	52	42
1	B	412/422 (98%)	405 (98%)	7 (2%)	0	100	100
All	All	819/844 (97%)	801 (98%)	17 (2%)	1 (0%)	56	46

All (1) Ramachandran outliers are listed below:

Mol	Chain	Res	Type
1	A	489	ASP

5.3.2 Protein sidechains ⓘ

In the following table, the Percentiles column shows the percent sidechain outliers of the chain as a percentile score with respect to all X-ray entries followed by that with respect to entries of similar resolution.

The Analysed column shows the number of residues for which the sidechain conformation was analysed, and the total number of residues.

Mol	Chain	Analysed	Rotameric	Outliers	Percentiles	
1	A	367/377 (97%)	352 (96%)	15 (4%)	37	25
1	B	371/377 (98%)	364 (98%)	7 (2%)	65	59
All	All	738/754 (98%)	716 (97%)	22 (3%)	48	38

All (22) residues with a non-rotameric sidechain are listed below:

Mol	Chain	Res	Type
1	A	322	LEU
1	A	348	VAL
1	A	350	THR
1	A	371	ARG
1	A	507	GLN
1	A	511	LYS
1	A	523	LEU
1	A	527	ASN
1	A	547	ARG
1	A	555	LYS
1	A	569	ASN
1	A	620	LYS
1	A	645	LYS
1	A	713	THR
1	A	715	VAL

Continued on next page...

Continued from previous page...

Mol	Chain	Res	Type
1	B	320	SER
1	B	332	MET
1	B	348	VAL
1	B	353	GLN
1	B	390	SER
1	B	454	ASN
1	B	547	ARG

Some sidechains can be flipped to improve hydrogen bonding and reduce clashes. All (17) such sidechains are listed below:

Mol	Chain	Res	Type
1	A	353	GLN
1	A	425	GLN
1	A	454	ASN
1	A	527	ASN
1	A	569	ASN
1	A	605	ASN
1	A	628	GLN
1	A	697	ASN
1	B	364	GLN
1	B	385	ASN
1	B	454	ASN
1	B	507	GLN
1	B	508	GLN
1	B	601	ASN
1	B	605	ASN
1	B	628	GLN
1	B	697	ASN

5.3.3 RNA ⓘ

There are no RNA molecules in this entry.

5.4 Non-standard residues in protein, DNA, RNA chains ⓘ

There are no non-standard protein/DNA/RNA residues in this entry.

5.5 Carbohydrates ⓘ

There are no carbohydrates in this entry.

5.6 Ligand geometry

Of 9 ligands modelled in this entry, 1 is monoatomic - leaving 8 for Mogul analysis.

In the following table, the Counts columns list the number of bonds (or angles) for which Mogul statistics could be retrieved, the number of bonds (or angles) that are observed in the model and the number of bonds (or angles) that are defined in the chemical component dictionary. The Link column lists molecule types, if any, to which the group is linked. The Z score for a bond length (or angle) is the number of standard deviations the observed value is removed from the expected value. A bond length (or angle) with $|Z| > 2$ is considered an outlier worth inspection. RMSZ is the root-mean-square of all Z scores of the bond lengths (or angles).

Mol	Type	Chain	Res	Link	Bond lengths			Bond angles		
					Counts	RMSZ	# $ Z > 2$	Counts	RMSZ	# $ Z > 2$
2	HEM	A	750	1	30,50,50	2.25	7 (23%)	24,82,82	2.59	11 (45%)
3	H4B	A	760	-	13,18,18	1.07	1 (7%)	11,26,26	2.53	6 (54%)
5	AXW	A	800	-	25,28,28	1.40	1 (4%)	27,37,37	1.23	3 (11%)
4	ACT	A	860	-	1,3,3	1.51	0	0,3,3	0.00	-
2	HEM	B	750	1	30,50,50	2.24	8 (26%)	24,82,82	2.62	12 (50%)
3	H4B	B	760	-	13,18,18	1.27	2 (15%)	11,26,26	2.60	5 (45%)
5	AXW	B	800	-	25,28,28	1.36	1 (4%)	27,37,37	1.32	2 (7%)
4	ACT	B	860	-	1,3,3	1.73	0	0,3,3	0.00	-

In the following table, the Chirals column lists the number of chiral outliers, the number of chiral centers analysed, the number of these observed in the model and the number defined in the chemical component dictionary. Similar counts are reported in the Torsion and Rings columns. '-' means no outliers of that kind were identified.

Mol	Type	Chain	Res	Link	Chirals	Torsions	Rings
2	HEM	A	750	1	-	0/10/54/54	0/0/8/8
3	H4B	A	760	-	-	0/8/17/17	0/2/2/2
5	AXW	A	800	-	-	0/12/22/22	0/3/3/3
4	ACT	A	860	-	-	0/0/0/0	0/0/0/0
2	HEM	B	750	1	-	0/10/54/54	0/0/8/8
3	H4B	B	760	-	-	0/8/17/17	0/2/2/2
5	AXW	B	800	-	-	0/12/22/22	0/3/3/3
4	ACT	B	860	-	-	0/0/0/0	0/0/0/0

All (20) bond length outliers are listed below:

Mol	Chain	Res	Type	Atoms	Z	Observed(Å)	Ideal(Å)
2	A	750	HEM	C3D-C4D	-6.80	1.42	1.51
2	A	750	HEM	C3B-C4B	-5.79	1.46	1.51
2	B	750	HEM	C3D-C4D	-5.47	1.44	1.51

Continued on next page...

Continued from previous page...

Mol	Chain	Res	Type	Atoms	Z	Observed(Å)	Ideal(Å)
2	B	750	HEM	C3B-C4B	-5.08	1.47	1.51
2	B	750	HEM	C2C-C1C	-4.62	1.43	1.52
2	A	750	HEM	C2C-C1C	-3.40	1.46	1.52
2	A	750	HEM	C2D-C1D	-2.21	1.44	1.51
3	A	760	H4B	C2-N2	2.03	1.38	1.34
3	B	760	H4B	C7-N8	2.13	1.48	1.46
2	A	750	HEM	C3C-CAC	2.18	1.55	1.51
2	B	750	HEM	CAA-C2A	2.21	1.55	1.52
2	B	750	HEM	FE-ND	2.26	2.09	1.97
3	B	760	H4B	C8A-N1	2.28	1.38	1.34
2	B	750	HEM	C3C-CAC	2.53	1.56	1.51
2	A	750	HEM	C1C-NC	2.66	1.39	1.36
2	B	750	HEM	C1C-NC	2.77	1.39	1.36
2	A	750	HEM	FE-NC	3.50	2.09	1.95
2	B	750	HEM	FE-NC	3.75	2.10	1.95
5	B	800	AXW	C21-C22	6.15	1.49	1.38
5	A	800	AXW	C21-C22	6.24	1.49	1.38

All (39) bond angle outliers are listed below:

Mol	Chain	Res	Type	Atoms	Z	Observed(°)	Ideal(°)
2	A	750	HEM	CBD-CAD-C3D	-4.18	101.39	113.55
2	B	750	HEM	CBA-CAA-C2A	-3.96	105.43	112.53
2	B	750	HEM	CBD-CAD-C3D	-3.76	102.62	113.55
2	A	750	HEM	CAA-C2A-C1A	-3.64	123.06	127.01
3	B	760	H4B	N3-C2-N1	-3.50	119.79	125.53
3	A	760	H4B	N3-C2-N1	-3.49	119.81	125.53
2	B	750	HEM	C3C-CAC-CBC	-3.47	119.13	124.46
2	A	750	HEM	C3C-CAC-CBC	-2.80	120.16	124.46
2	B	750	HEM	C3B-C4B-NB	-2.53	106.79	111.63
5	A	800	AXW	C05-C06-N01	-2.31	120.36	122.96
2	A	750	HEM	CBA-CAA-C2A	-2.26	108.47	112.53
2	B	750	HEM	CAA-C2A-C1A	-2.26	124.55	127.01
5	B	800	AXW	C05-C06-N01	-2.19	120.49	122.96
5	A	800	AXW	C23-C22-C21	-2.02	119.61	123.40
3	A	760	H4B	N2-C2-N3	2.02	120.55	117.20
3	B	760	H4B	C4A-C8A-N8	2.02	120.81	118.43
2	B	750	HEM	C2C-C1C-CHC	2.30	127.18	123.68
2	A	750	HEM	C2D-C3D-C4D	2.40	105.56	101.50
2	B	750	HEM	C3B-C4B-CHC	2.57	126.79	123.16
2	B	750	HEM	CMD-C2D-C3D	2.62	125.95	114.35
3	B	760	H4B	C2-N1-C8A	2.78	120.79	114.54

Continued on next page...

Continued from previous page...

Mol	Chain	Res	Type	Atoms	Z	Observed(°)	Ideal(°)
2	A	750	HEM	CMD-C2D-C3D	3.08	127.98	114.35
2	A	750	HEM	C3B-C4B-CHC	3.09	127.51	123.16
3	A	760	H4B	C4-N3-C2	3.26	120.47	115.94
3	A	760	H4B	C4A-C8A-N8	3.27	122.28	118.43
3	A	760	H4B	C2-N1-C8A	3.32	122.01	114.54
2	A	750	HEM	CMB-C2B-C3B	3.79	125.98	116.53
5	A	800	AXW	C02-N01-C06	3.81	120.94	118.23
3	B	760	H4B	C4-N3-C2	4.13	121.68	115.94
5	B	800	AXW	C02-N01-C06	4.19	121.21	118.23
3	A	760	H4B	C4-C4A-C8A	4.20	118.37	114.56
2	B	750	HEM	CMC-C2C-C3C	4.22	127.07	116.53
2	A	750	HEM	CAD-C3D-C4D	4.40	128.00	112.47
2	B	750	HEM	CMB-C2B-C3B	4.45	127.64	116.53
2	B	750	HEM	CAD-C3D-C2D	4.54	126.26	113.22
2	A	750	HEM	CAD-C3D-C2D	4.60	126.43	113.22
2	B	750	HEM	CAD-C3D-C4D	4.81	129.43	112.47
3	B	760	H4B	C4-C4A-C8A	5.06	119.14	114.56
2	A	750	HEM	CMC-C2C-C3C	5.19	129.48	116.53

There are no chirality outliers.

There are no torsion outliers.

There are no ring outliers.

3 monomers are involved in 9 short contacts:

Mol	Chain	Res	Type	Clashes	Symm-Clashes
2	A	750	HEM	4	0
5	A	800	AXW	3	0
2	B	750	HEM	2	0

5.7 Other polymers

There are no such residues in this entry.

5.8 Polymer linkage issues

There are no chain breaks in this entry.

6 Fit of model and data

6.1 Protein, DNA and RNA chains

In the following table, the column labelled ‘#RSRZ> 2’ contains the number (and percentage) of RSRZ outliers, followed by percent RSRZ outliers for the chain as percentile scores relative to all X-ray entries and entries of similar resolution. The OWAB column contains the minimum, median, 95th percentile and maximum values of the occupancy-weighted average B-factor per residue. The column labelled ‘Q< 0.9’ lists the number of (and percentage) of residues with an average occupancy less than 0.9.

Mol	Chain	Analysed	<RSRZ>	#RSRZ>2	OWAB(Å ²)	Q<0.9
1	A	409/422 (96%)	0.96	75 (18%) 2 2	25, 49, 87, 114	0
1	B	411/422 (97%)	0.37	34 (8%) 14 15	24, 37, 61, 78	0
All	All	820/844 (97%)	0.66	109 (13%) 4 5	24, 42, 81, 114	0

All (109) RSRZ outliers are listed below:

Mol	Chain	Res	Type	RSRZ
1	B	300	PHE	9.6
1	A	348	VAL	8.4
1	A	488	PRO	7.7
1	A	716	TRP	6.9
1	A	355	PHE	6.4
1	A	300	PHE	6.2
1	A	352	ASP	5.6
1	A	715	VAL	4.9
1	A	486	LYS	4.7
1	B	350	THR	4.5
1	A	351	LYS	4.5
1	A	511	LYS	4.4
1	B	348	VAL	4.4
1	B	619	ARG	4.3
1	A	490	GLY	4.2
1	A	507	GLN	4.1
1	A	508	GLN	4.0
1	A	552	ASP	3.9
1	A	350	THR	3.9
1	A	713	THR	3.8
1	A	390	SER	3.8
1	A	567	VAL	3.8
1	A	506	ILE	3.7
1	A	349	ARG	3.7

Continued on next page...

Continued from previous page...

Mol	Chain	Res	Type	RSRZ
1	A	619	ARG	3.6
1	A	299	ARG	3.5
1	A	385	ASN	3.5
1	A	386	LYS	3.5
1	A	679	ILE	3.4
1	B	620	LYS	3.4
1	A	479	LEU	3.4
1	A	491	SER	3.4
1	B	299	ARG	3.4
1	A	677	VAL	3.4
1	A	388	ILE	3.3
1	B	567	VAL	3.3
1	A	489	ASP	3.3
1	A	389	GLU	3.3
1	A	512	ALA	3.2
1	A	503	GLU	3.2
1	B	718	GLY	3.2
1	A	321	THR	3.2
1	A	469	LYS	3.2
1	A	338	PRO	3.2
1	A	322	LEU	3.1
1	A	392	SER	3.1
1	A	680	VAL	3.1
1	A	682	PRO	3.0
1	A	584	PHE	2.9
1	A	514	ARG	2.8
1	A	678	TRP	2.8
1	B	591	THR	2.7
1	B	680	VAL	2.7
1	A	591	THR	2.7
1	A	714	HIS	2.7
1	A	712	ASN	2.7
1	A	467	ASP	2.7
1	B	667	ARG	2.7
1	B	615	ASP	2.6
1	A	681	PRO	2.6
1	A	504	ILE	2.6
1	A	588	TYR	2.6
1	A	470	HIS	2.6
1	A	643	SER	2.6
1	A	415	CYS	2.5
1	B	389	GLU	2.5

Continued on next page...

Continued from previous page...

Mol	Chain	Res	Type	RSRZ
1	B	691	PHE	2.5
1	B	677	VAL	2.5
1	A	668	CYS	2.5
1	A	353	GLN	2.5
1	A	551	PHE	2.5
1	A	391	THR	2.5
1	A	480	ILE	2.5
1	A	492	THR	2.5
1	A	593	ILE	2.4
1	B	679	ILE	2.4
1	A	487	GLN	2.4
1	B	566	ALA	2.4
1	A	505	CYS	2.3
1	A	416	VAL	2.3
1	A	685	GLY	2.3
1	A	617	ASP	2.3
1	A	356	PRO	2.3
1	B	682	PRO	2.3
1	B	564	LEU	2.2
1	B	616	LEU	2.2
1	B	309	ASP	2.2
1	B	681	PRO	2.2
1	A	595	VAL	2.2
1	A	618	MET	2.2
1	B	352	ASP	2.2
1	A	561	TRP	2.2
1	A	676	TRP	2.2
1	B	565	PRO	2.2
1	B	329	HIS	2.2
1	A	373	GLY	2.2
1	B	355	PHE	2.2
1	B	479	LEU	2.2
1	A	686	SER	2.2
1	B	351	LYS	2.2
1	A	667	ARG	2.1
1	B	302	LYS	2.1
1	B	676	TRP	2.1
1	B	617	ASP	2.1
1	A	466	THR	2.0
1	B	321	THR	2.0
1	B	310	VAL	2.0
1	B	568	SER	2.0

Continued on next page...

Continued from previous page...

Mol	Chain	Res	Type	RSRZ
1	A	615	ASP	2.0

6.2 Non-standard residues in protein, DNA, RNA chains [i](#)

There are no non-standard protein/DNA/RNA residues in this entry.

6.3 Carbohydrates [i](#)

There are no carbohydrates in this entry.

6.4 Ligands [i](#)

In the following table, the Atoms column lists the number of modelled atoms in the group and the number defined in the chemical component dictionary. LLDF column lists the quality of electron density of the group with respect to its neighbouring residues in protein, DNA or RNA chains. The B-factors column lists the minimum, median, 95th percentile and maximum values of B factors of atoms in the group. The column labelled 'Q< 0.9' lists the number of atoms with occupancy less than 0.9.

Mol	Type	Chain	Res	Atoms	RSCC	RSR	LLDF	B-factors(Å ²)	Q<0.9
4	ACT	A	860	4/4	0.91	0.18	4.34	48,48,49,50	0
4	ACT	B	860	4/4	0.96	0.12	1.28	43,43,43,45	0
2	HEM	A	750	43/43	0.97	0.21	0.93	25,29,36,39	0
2	HEM	B	750	43/43	0.98	0.17	0.74	23,27,33,35	0
3	H4B	B	760	17/17	0.95	0.16	0.56	25,29,34,35	0
3	H4B	A	760	17/17	0.97	0.16	0.20	26,29,34,37	0
5	AXW	A	800	26/26	0.95	0.18	0.10	20,24,52,55	0
5	AXW	B	800	26/26	0.94	0.15	-0.08	20,25,52,54	0
6	ZN	A	900	1/1	1.00	0.06	-1.53	34,34,34,34	0

6.5 Other polymers [i](#)

There are no such residues in this entry.