



wwPDB X-ray Structure Validation Summary Report ⓘ

Feb 1, 2016 – 08:40 PM GMT

PDB ID : 4U0N
Title : Structure of the Vibrio cholerae di-nucleotide cyclase (DncV) deletion mutant D-loop
Authors : Xiang, Y.; Zhu, D.Y.
Deposited on : 2014-07-12
Resolution : 2.10 Å(reported)

This is a wwPDB X-ray Structure Validation Summary Report for a publicly released PDB entry.
We welcome your comments at validation@mail.wwpdb.org
A user guide is available at
<http://wwpdb.org/validation/2016/XrayValidationReportHelp>
with specific help available everywhere you see the ⓘ symbol.

The following versions of software and data (see [references ⓘ](#)) were used in the production of this report:

MolProbity : 4.02b-467
Mogul : 1.7 (RC4), CSD as536be (2015)
Xtriage (Phenix) : 1.9-1692
EDS : rb-20026688
Percentile statistics : 20151230.v01 (using entries in the PDB archive December 30th 2015)
Refmac : 5.8.0135
CCP4 : 6.5.0
Ideal geometry (proteins) : Engh & Huber (2001)
Ideal geometry (DNA, RNA) : Parkinson et al. (1996)
Validation Pipeline (wwPDB-VP) : trunk26865

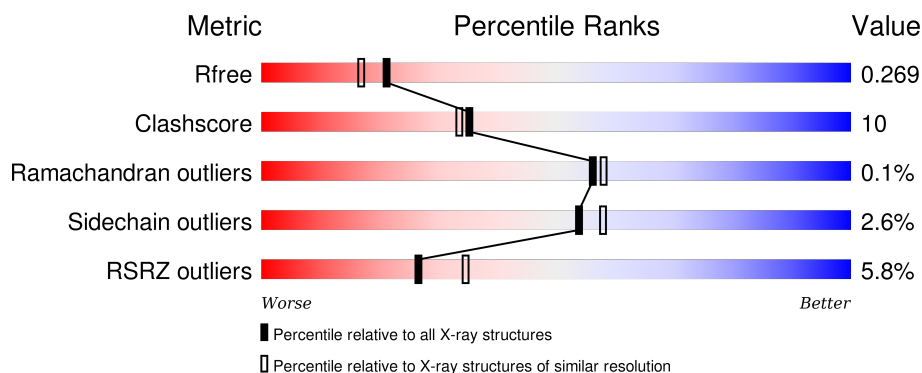
1 Overall quality at a glance

The following experimental techniques were used to determine the structure:

X-RAY DIFFRACTION

The reported resolution of this entry is 2.10 Å.

Percentile scores (ranging between 0-100) for global validation metrics of the entry are shown in the following graphic. The table shows the number of entries on which the scores are based.



Metric	Whole archive (#Entries)	Similar resolution (#Entries, resolution range(Å))
R_{free}	91344	3939 (2.10-2.10)
Clashscore	102246	4460 (2.10-2.10)
Ramachandran outliers	100387	4413 (2.10-2.10)
Sidechain outliers	100360	4414 (2.10-2.10)
RSRZ outliers	91569	3948 (2.10-2.10)

The table below summarises the geometric issues observed across the polymeric chains and their fit to the electron density. The red, orange, yellow and green segments on the lower bar indicate the fraction of residues that contain outliers for ≥ 3 , 2, 1 and 0 types of geometric quality criteria. A grey segment represents the fraction of residues that are not modelled. The numeric value for each fraction is indicated below the corresponding segment, with a dot representing fractions $\leq 5\%$. The upper red bar (where present) indicates the fraction of residues that have poor fit to the electron density. The numeric value is given above the bar.

Mol	Chain	Length	Quality of chain
1	A	391	<div> <div>6%</div> <div> <div></div> <div>80%</div> <div>15%</div> <div>• 5%</div> </div> </div>
1	B	391	<div> <div>5%</div> <div> <div></div> <div>78%</div> <div>16%</div> <div>• 5%</div> </div> </div>

2 Entry composition

There are 4 unique types of molecules in this entry. The entry contains 6498 atoms, of which 58 are hydrogens and 0 are deuteriums.

In the tables below, the ZeroOcc column contains the number of atoms modelled with zero occupancy, the AltConf column contains the number of residues with at least one atom in alternate conformation and the Trace column contains the number of residues modelled with at most 2 atoms.

- Molecule 1 is a protein called Cyclic AMP-GMP synthase.

Mol	Chain	Residues	Atoms					ZeroOcc	AltConf	Trace
1	A	373	Total	C	N	O	S	0	0	0
			2984	1883	515	570	16			
1	B	373	Total	C	N	O	S	0	0	0
			2984	1883	515	570	16			

There are 88 discrepancies between the modelled and reference sequences:

Chain	Residue	Modelled	Actual	Comment	Reference
A	?	-	GLU	deletion	UNP Q9KVG7
A	?	-	PHE	deletion	UNP Q9KVG7
A	?	-	GLN	deletion	UNP Q9KVG7
A	?	-	LYS	deletion	UNP Q9KVG7
A	?	-	LYS	deletion	UNP Q9KVG7
A	?	-	GLN	deletion	UNP Q9KVG7
A	?	-	ILE	deletion	UNP Q9KVG7
A	?	-	ALA	deletion	UNP Q9KVG7
A	?	-	LEU	deletion	UNP Q9KVG7
A	?	-	GLU	deletion	UNP Q9KVG7
A	?	-	ALA	deletion	UNP Q9KVG7
A	?	-	ASN	deletion	UNP Q9KVG7
A	?	-	ARG	deletion	UNP Q9KVG7
A	?	-	SER	deletion	UNP Q9KVG7
A	?	-	PHE	deletion	UNP Q9KVG7
A	?	-	VAL	deletion	UNP Q9KVG7
A	?	-	LYS	deletion	UNP Q9KVG7
A	?	-	GLY	deletion	UNP Q9KVG7
A	?	-	ALA	deletion	UNP Q9KVG7
A	?	-	ILE	deletion	UNP Q9KVG7
A	?	-	PHE	deletion	UNP Q9KVG7
A	?	-	GLU	deletion	UNP Q9KVG7
A	?	-	SER	deletion	UNP Q9KVG7
A	?	-	TYR	deletion	UNP Q9KVG7
A	?	-	VAL	deletion	UNP Q9KVG7

Continued on next page...

Continued from previous page...

Chain	Residue	Modelled	Actual	Comment	Reference
A	?	-	ALA	deletion	UNP Q9KVG7
A	?	-	ASP	deletion	UNP Q9KVG7
A	?	-	SER	deletion	UNP Q9KVG7
A	?	-	ILE	deletion	UNP Q9KVG7
A	?	-	THR	deletion	UNP Q9KVG7
A	?	-	ASP	deletion	UNP Q9KVG7
A	?	-	ASP	deletion	UNP Q9KVG7
A	?	-	SER	deletion	UNP Q9KVG7
A	?	-	GLU	deletion	UNP Q9KVG7
A	?	-	THR	deletion	UNP Q9KVG7
A	?	-	TYR	deletion	UNP Q9KVG7
A	384	LEU	-	expression tag	UNP Q9KVG7
A	385	GLU	-	expression tag	UNP Q9KVG7
A	386	HIS	-	expression tag	UNP Q9KVG7
A	387	HIS	-	expression tag	UNP Q9KVG7
A	388	HIS	-	expression tag	UNP Q9KVG7
A	389	HIS	-	expression tag	UNP Q9KVG7
A	390	HIS	-	expression tag	UNP Q9KVG7
A	391	HIS	-	expression tag	UNP Q9KVG7
B	?	-	GLU	deletion	UNP Q9KVG7
B	?	-	PHE	deletion	UNP Q9KVG7
B	?	-	GLN	deletion	UNP Q9KVG7
B	?	-	LYS	deletion	UNP Q9KVG7
B	?	-	LYS	deletion	UNP Q9KVG7
B	?	-	GLN	deletion	UNP Q9KVG7
B	?	-	ILE	deletion	UNP Q9KVG7
B	?	-	ALA	deletion	UNP Q9KVG7
B	?	-	LEU	deletion	UNP Q9KVG7
B	?	-	GLU	deletion	UNP Q9KVG7
B	?	-	ALA	deletion	UNP Q9KVG7
B	?	-	ASN	deletion	UNP Q9KVG7
B	?	-	ARG	deletion	UNP Q9KVG7
B	?	-	SER	deletion	UNP Q9KVG7
B	?	-	PHE	deletion	UNP Q9KVG7
B	?	-	VAL	deletion	UNP Q9KVG7
B	?	-	LYS	deletion	UNP Q9KVG7
B	?	-	GLY	deletion	UNP Q9KVG7
B	?	-	ALA	deletion	UNP Q9KVG7
B	?	-	ILE	deletion	UNP Q9KVG7
B	?	-	PHE	deletion	UNP Q9KVG7
B	?	-	GLU	deletion	UNP Q9KVG7
B	?	-	SER	deletion	UNP Q9KVG7

Continued on next page...

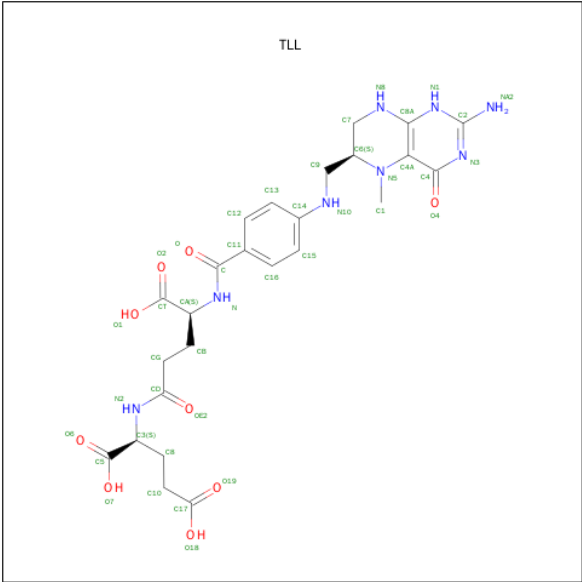
Continued from previous page...

Chain	Residue	Modelled	Actual	Comment	Reference
B	?	-	TYR	deletion	UNP Q9KVG7
B	?	-	VAL	deletion	UNP Q9KVG7
B	?	-	ALA	deletion	UNP Q9KVG7
B	?	-	ASP	deletion	UNP Q9KVG7
B	?	-	SER	deletion	UNP Q9KVG7
B	?	-	ILE	deletion	UNP Q9KVG7
B	?	-	THR	deletion	UNP Q9KVG7
B	?	-	ASP	deletion	UNP Q9KVG7
B	?	-	ASP	deletion	UNP Q9KVG7
B	?	-	SER	deletion	UNP Q9KVG7
B	?	-	GLU	deletion	UNP Q9KVG7
B	?	-	THR	deletion	UNP Q9KVG7
B	?	-	TYR	deletion	UNP Q9KVG7
B	384	LEU	-	expression tag	UNP Q9KVG7
B	385	GLU	-	expression tag	UNP Q9KVG7
B	386	HIS	-	expression tag	UNP Q9KVG7
B	387	HIS	-	expression tag	UNP Q9KVG7
B	388	HIS	-	expression tag	UNP Q9KVG7
B	389	HIS	-	expression tag	UNP Q9KVG7
B	390	HIS	-	expression tag	UNP Q9KVG7
B	391	HIS	-	expression tag	UNP Q9KVG7

- Molecule 2 is MAGNESIUM ION (three-letter code: MG) (formula: Mg).

Mol	Chain	Residues	Atoms	ZeroOcc	AltConf
2	B	1	Total Mg 1 1	0	0
2	A	1	Total Mg 1 1	0	0

- Molecule 3 is N-[4-({[(6S)-2-amino-5-methyl-4-oxo-1,4,5,6,7,8-hexahydropteridin-6-yl]methyl}amino)benzoyl]-L-gamma-glutamyl-L-glutamic acid (three-letter code: TLL) (formula: C₂₅H₃₂N₈O₉).



Mol	Chain	Residues	Atoms					ZeroOcc	AltConf
3	A	1	Total	C	H	N	O	0	0
			71	25	29	8	9		
3	B	1	Total	C	H	N	O	0	0
			71	25	29	8	9		

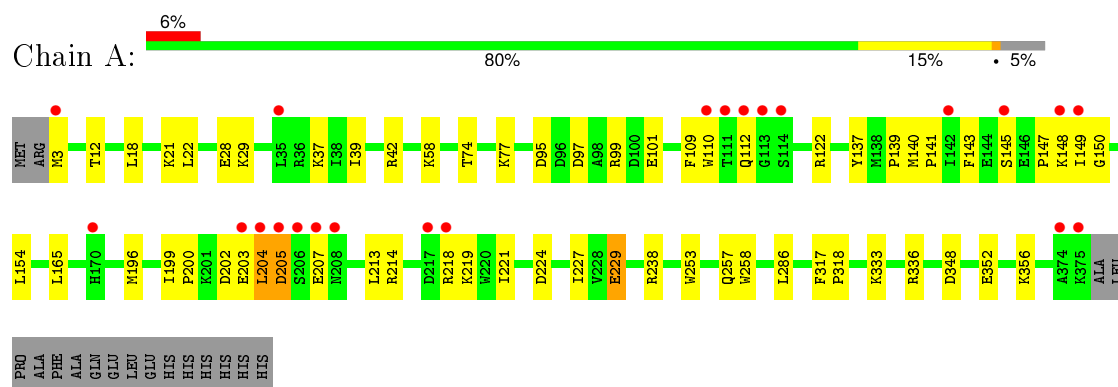
- Molecule 4 is water.

Mol	Chain	Residues	Atoms		ZeroOcc	AltConf
4	A	184	Total	O	0	0
			184	184		
4	B	202	Total	O	0	0
			202	202		

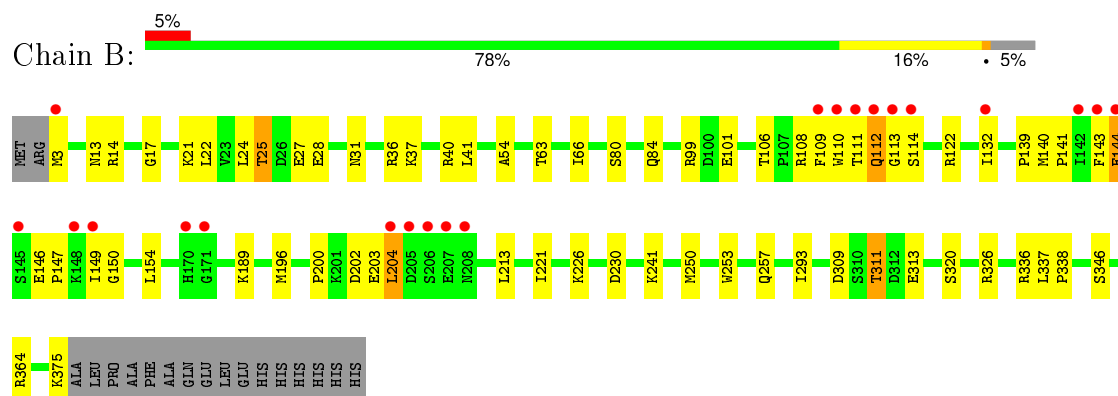
3 Residue-property plots [i](#)

These plots are drawn for all protein, RNA and DNA chains in the entry. The first graphic for a chain summarises the proportions of errors displayed in the second graphic. The second graphic shows the sequence view annotated by issues in geometry and electron density. Residues are color-coded according to the number of geometric quality criteria for which they contain at least one outlier: green = 0, yellow = 1, orange = 2 and red = 3 or more. A red dot above a residue indicates a poor fit to the electron density ($RSRZ > 2$). Stretches of 2 or more consecutive residues without any outlier are shown as a green connector. Residues present in the sample, but not in the model, are shown in grey.

• Molecule 1: Cyclic AMP-GMP synthase



• Molecule 1: Cyclic AMP-GMP synthase



4 Data and refinement statistics

Property	Value	Source
Space group	P 1 21 1	Depositor
Cell constants a, b, c, α , β , γ	73.61Å 49.25Å 122.23Å 90.00° 98.66° 90.00°	Depositor
Resolution (Å)	37.73 – 2.10 38.18 – 2.10	Depositor EDS
% Data completeness (in resolution range)	99.2 (37.73-2.10) 99.2 (38.18-2.10)	Depositor EDS
R_{merge}	(Not available)	Depositor
R_{sym}	(Not available)	Depositor
$\langle I/\sigma(I) \rangle$ ¹	8.77 (at 2.10Å)	Xtriage
Refinement program	PHENIX (phenix.refine: 1.8.2_1309)	Depositor
R, R_{free}	0.217 , 0.264 0.225 , 0.269	Depositor DCC
R_{free} test set	2556 reflections (5.33%)	DCC
Wilson B-factor (Å ²)	26.1	Xtriage
Anisotropy	0.395	Xtriage
Bulk solvent k_{sol} (e/Å ³), B_{sol} (Å ²)	0.35 , 47.5	EDS
Estimated twinning fraction	No twinning to report.	Xtriage
L-test for twinning ²	$\langle L \rangle = 0.52$, $\langle L^2 \rangle = 0.36$	Xtriage
Outliers	5 of 50553 reflections (0.010%)	Xtriage
F_o, F_c correlation	0.94	EDS
Total number of atoms	6498	wwPDB-VP
Average B, all atoms (Å ²)	35.0	wwPDB-VP

Xtriage's analysis on translational NCS is as follows: *The analyses of the Patterson function reveals a significant off-origin peak that is 43.76 % of the origin peak, indicating pseudo translational symmetry. The chance of finding a peak of this or larger height randomly in a structure without pseudo translational symmetry is equal to 1.6836e-04. The detected translational NCS is most likely also responsible for the elevated intensity ratio.*

¹Intensities estimated from amplitudes.

²Theoretical values of $\langle |L| \rangle$, $\langle L^2 \rangle$ for acentric reflections are 0.5, 0.375 respectively for untwinned datasets, and 0.333, 0.2 for perfectly twinned datasets.

5 Model quality

5.1 Standard geometry

Bond lengths and bond angles in the following residue types are not validated in this section: MG, TLL

The Z score for a bond length (or angle) is the number of standard deviations the observed value is removed from the expected value. A bond length (or angle) with $|Z| > 5$ is considered an outlier worth inspection. RMSZ is the root-mean-square of all Z scores of the bond lengths (or angles).

Mol	Chain	Bond lengths		Bond angles	
		RMSZ	# Z >5	RMSZ	# Z >5
1	A	0.25	0/3044	0.43	0/4105
1	B	0.26	0/3044	0.46	0/4105
All	All	0.26	0/6088	0.45	0/8210

There are no bond length outliers.

There are no bond angle outliers.

There are no chirality outliers.

There are no planarity outliers.

5.2 Too-close contacts

In the following table, the Non-H and H(model) columns list the number of non-hydrogen atoms and hydrogen atoms in the chain respectively. The H(added) column lists the number of hydrogen atoms added and optimized by MolProbity. The Clashes column lists the number of clashes within the asymmetric unit, whereas Symm-Clashes lists symmetry related clashes.

Mol	Chain	Non-H	H(model)	H(added)	Clashes	Symm-Clashes
1	A	2984	0	2976	58	0
1	B	2984	0	2976	61	0
2	A	1	0	0	0	0
2	B	1	0	0	0	0
3	A	42	29	29	12	0
3	B	42	29	29	7	0
4	A	184	0	0	8	0
4	B	202	0	0	9	0
All	All	6440	58	6010	118	0

The all-atom clashscore is defined as the number of clashes found per 1000 atoms (including hydrogen atoms). The all-atom clashscore for this structure is 10.

The worst 5 of 118 close contacts within the same asymmetric unit are listed below, sorted by their clash magnitude.

Atom-1	Atom-2	Interatomic distance (Å)	Clash overlap (Å)
1:A:109:PHE:O	3:A:402:TLL:H16	1.54	1.08
1:A:109:PHE:O	3:A:402:TLL:C16	2.12	0.98
1:A:101:GLU:HG3	1:A:148:LYS:HD2	1.52	0.92
1:B:250:MET:SD	4:B:566:HOH:O	2.32	0.85
1:B:109:PHE:O	3:B:402:TLL:H16	1.78	0.83

There are no symmetry-related clashes.

5.3 Torsion angles [i](#)

5.3.1 Protein backbone [i](#)

In the following table, the Percentiles column shows the percent Ramachandran outliers of the chain as a percentile score with respect to all X-ray entries followed by that with respect to entries of similar resolution.

The Analysed column shows the number of residues for which the backbone conformation was analysed, and the total number of residues.

Mol	Chain	Analysed	Favoured	Allowed	Outliers	Percentiles	
1	A	371/391 (95%)	361 (97%)	10 (3%)	0	100	100
1	B	371/391 (95%)	358 (96%)	12 (3%)	1 (0%)	46	45
All	All	742/782 (95%)	719 (97%)	22 (3%)	1 (0%)	56	58

All (1) Ramachandran outliers are listed below:

Mol	Chain	Res	Type
1	B	113	GLY

5.3.2 Protein sidechains [i](#)

In the following table, the Percentiles column shows the percent sidechain outliers of the chain as a percentile score with respect to all X-ray entries followed by that with respect to entries of similar resolution.

The Analysed column shows the number of residues for which the sidechain conformation was analysed, and the total number of residues.

Mol	Chain	Analysed	Rotameric	Outliers	Percentiles	
1	A	329/344 (96%)	323 (98%)	6 (2%)	66	72
1	B	329/344 (96%)	318 (97%)	11 (3%)	45	47
All	All	658/688 (96%)	641 (97%)	17 (3%)	54	58

5 of 17 residues with a non-rotameric sidechain are listed below:

Mol	Chain	Res	Type
1	B	106	THR
1	B	111	THR
1	B	311	THR
1	B	25	THR
1	B	313	GLU

Some sidechains can be flipped to improve hydrogen bonding and reduce clashes. All (1) such sidechains are listed below:

Mol	Chain	Res	Type
1	A	112	GLN

5.3.3 RNA ⓘ

There are no RNA molecules in this entry.

5.4 Non-standard residues in protein, DNA, RNA chains ⓘ

There are no non-standard protein/DNA/RNA residues in this entry.

5.5 Carbohydrates ⓘ

There are no carbohydrates in this entry.

5.6 Ligand geometry ⓘ

Of 4 ligands modelled in this entry, 2 are monoatomic - leaving 2 for Mogul analysis.

In the following table, the Counts columns list the number of bonds (or angles) for which Mogul statistics could be retrieved, the number of bonds (or angles) that are observed in the model and the number of bonds (or angles) that are defined in the chemical component dictionary. The Link column lists molecule types, if any, to which the group is linked. The Z score for a bond length (or angle) is the number of standard deviations the observed value is removed from the expected

value. A bond length (or angle) with $|Z| > 2$ is considered an outlier worth inspection. RMSZ is the root-mean-square of all Z scores of the bond lengths (or angles).

Mol	Type	Chain	Res	Link	Bond lengths			Bond angles		
					Counts	RMSZ	$\# Z > 2$	Counts	RMSZ	$\# Z > 2$
3	TLL	A	402	-	30,44,44	4.16	14 (46%)	30,61,61	2.01	11 (36%)
3	TLL	B	402	-	30,44,44	4.11	15 (50%)	30,61,61	1.93	10 (33%)

In the following table, the Chirals column lists the number of chiral outliers, the number of chiral centers analysed, the number of these observed in the model and the number defined in the chemical component dictionary. Similar counts are reported in the Torsion and Rings columns. '-' means no outliers of that kind were identified.

Mol	Type	Chain	Res	Link	Chirals	Torsions	Rings
3	TLL	A	402	-	-	1/25/48/48	0/3/3/3
3	TLL	B	402	-	-	1/25/48/48	0/3/3/3

The worst 5 of 29 bond length outliers are listed below:

Mol	Chain	Res	Type	Atoms	Z	Observed(Å)	Ideal(Å)
3	B	402	TLL	C7-N8	-2.84	1.42	1.46
3	A	402	TLL	C6-N5	-2.67	1.45	1.47
3	A	402	TLL	C3-N2	-2.53	1.43	1.46
3	B	402	TLL	C3-N2	-2.49	1.43	1.46
3	A	402	TLL	C7-N8	-2.48	1.42	1.46

The worst 5 of 21 bond angle outliers are listed below:

Mol	Chain	Res	Type	Atoms	Z	Observed(°)	Ideal(°)
3	B	402	TLL	C9-N10-C14	-3.85	111.75	121.46
3	A	402	TLL	C4A-C4-N3	-3.54	118.01	123.46
3	A	402	TLL	N1-C2-N3	-3.44	117.19	121.79
3	B	402	TLL	N1-C2-N3	-3.42	117.21	121.79
3	A	402	TLL	C9-N10-C14	-3.35	113.03	121.46

There are no chirality outliers.

All (2) torsion outliers are listed below:

Mol	Chain	Res	Type	Atoms
3	A	402	TLL	CB-CA-N-C
3	B	402	TLL	CB-CA-N-C

There are no ring outliers.

2 monomers are involved in 19 short contacts:

Mol	Chain	Res	Type	Clashes	Symm-Clashes
3	A	402	TLL	12	0
3	B	402	TLL	7	0

5.7 Other polymers [i](#)

There are no such residues in this entry.

5.8 Polymer linkage issues [i](#)

There are no chain breaks in this entry.

6 Fit of model and data [i](#)

6.1 Protein, DNA and RNA chains [i](#)

In the following table, the column labelled ‘#RSRZ> 2’ contains the number (and percentage) of RSRZ outliers, followed by percent RSRZ outliers for the chain as percentile scores relative to all X-ray entries and entries of similar resolution. The OWAB column contains the minimum, median, 95th percentile and maximum values of the occupancy-weighted average B-factor per residue. The column labelled ‘Q< 0.9’ lists the number of (and percentage) of residues with an average occupancy less than 0.9.

Mol	Chain	Analysed	<RSRZ>	#RSRZ>2	OWAB(Å ²)	Q<0.9
1	A	373/391 (95%)	0.17	22 (5%) 26 34	17, 31, 65, 84	0
1	B	373/391 (95%)	0.15	21 (5%) 28 36	16, 30, 66, 91	0
All	All	746/782 (95%)	0.16	43 (5%) 26 34	16, 30, 66, 91	0

The worst 5 of 43 RSRZ outliers are listed below:

Mol	Chain	Res	Type	RSRZ
1	A	204	LEU	8.0
1	B	113	GLY	6.7
1	B	206	SER	6.3
1	B	111	THR	6.2
1	B	112	GLN	6.2

6.2 Non-standard residues in protein, DNA, RNA chains [i](#)

There are no non-standard protein/DNA/RNA residues in this entry.

6.3 Carbohydrates [i](#)

There are no carbohydrates in this entry.

6.4 Ligands [i](#)

In the following table, the Atoms column lists the number of modelled atoms in the group and the number defined in the chemical component dictionary. LLDF column lists the quality of electron density of the group with respect to its neighbouring residues in protein, DNA or RNA chains. The B-factors column lists the minimum, median, 95th percentile and maximum values of B factors of atoms in the group. The column labelled ‘Q< 0.9’ lists the number of atoms with occupancy less than 0.9.

Mol	Type	Chain	Res	Atoms	RSCC	RSR	LLDF	B-factors(\AA^2)	Q<0.9
3	TLL	A	402	42/42	0.67	0.36	1.80	51,93,130,133	0
3	TLL	B	402	42/42	0.72	0.36	1.25	47,81,128,131	0
2	MG	B	401	1/1	0.81	0.09	-1.33	37,37,37,37	0
2	MG	A	401	1/1	0.97	0.04	-8.36	39,39,39,39	0

6.5 Other polymers [i](#)

There are no such residues in this entry.