



# Full wwPDB X-ray Structure Validation Report ⓘ

Feb 1, 2016 – 01:35 PM GMT

PDB ID : 3U6J  
Title : Crystal structure of the VEGFR2 kinase domain in complex with a pyrazolone inhibitor  
Authors : Whittington, D.A.; Long, A.; Rose, P.; Gu, Y.; Zhao, H.  
Deposited on : 2011-10-12  
Resolution : 2.15 Å(reported)

This is a Full wwPDB X-ray Structure Validation Report for a publicly released PDB entry.  
We welcome your comments at [validation@mail.wwpdb.org](mailto:validation@mail.wwpdb.org)  
A user guide is available at  
<http://wwpdb.org/validation/2016/XrayValidationReportHelp>  
with specific help available everywhere you see the ⓘ symbol.

---

The following versions of software and data (see [references ⓘ](#)) were used in the production of this report:

MolProbity : 4.02b-467  
Mogul : 1.7 (RC4), CSD as536be (2015)  
Xtriage (Phenix) : 1.9-1692  
EDS : rb-20026688  
Percentile statistics : 20151230.v01 (using entries in the PDB archive December 30th 2015)  
Refmac : 5.8.0135  
CCP4 : 6.5.0  
Ideal geometry (proteins) : Engh & Huber (2001)  
Ideal geometry (DNA, RNA) : Parkinson et al. (1996)  
Validation Pipeline (wwPDB-VP) : trunk26865

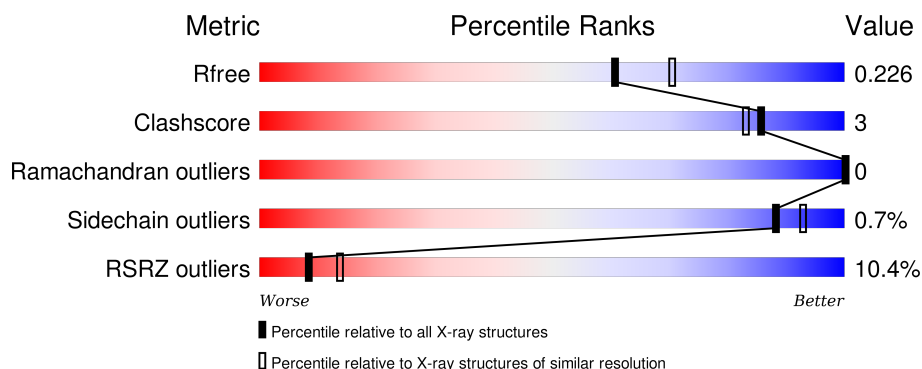
# 1 Overall quality at a glance

The following experimental techniques were used to determine the structure:

## *X-RAY DIFFRACTION*

The reported resolution of this entry is 2.15 Å.

Percentile scores (ranging between 0-100) for global validation metrics of the entry are shown in the following graphic. The table shows the number of entries on which the scores are based.



Metric	Whole archive (#Entries)	Similar resolution (#Entries, resolution range(Å))
$R_{free}$	91344	1045 (2.16-2.16)
Clashscore	102246	1152 (2.16-2.16)
Ramachandran outliers	100387	1131 (2.16-2.16)
Sidechain outliers	100360	1131 (2.16-2.16)
RSRZ outliers	91569	1050 (2.16-2.16)

The table below summarises the geometric issues observed across the polymeric chains and their fit to the electron density. The red, orange, yellow and green segments on the lower bar indicate the fraction of residues that contain outliers for  $\geq 3$ , 2, 1 and 0 types of geometric quality criteria. A grey segment represents the fraction of residues that are not modelled. The numeric value for each fraction is indicated below the corresponding segment, with a dot representing fractions  $\leq 5\%$ . The upper red bar (where present) indicates the fraction of residues that have poor fit to the electron density. The numeric value is given above the bar.

Mol	Chain	Length	Quality of chain
1	A	314	

## 2 Entry composition

There are 3 unique types of molecules in this entry. The entry contains 2783 atoms, of which 0 are hydrogens and 0 are deuteriums.

In the tables below, the ZeroOcc column contains the number of atoms modelled with zero occupancy, the AltConf column contains the number of residues with at least one atom in alternate conformation and the Trace column contains the number of residues modelled with at most 2 atoms.

- Molecule 1 is a protein called Vascular endothelial growth factor receptor 2.

Mol	Chain	Residues	Atoms					ZeroOcc	AltConf	Trace
1	A	308	Total	C	N	O	S	0	0	0
			2484	1588	436	443	17			

There are 58 discrepancies between the modelled and reference sequences:

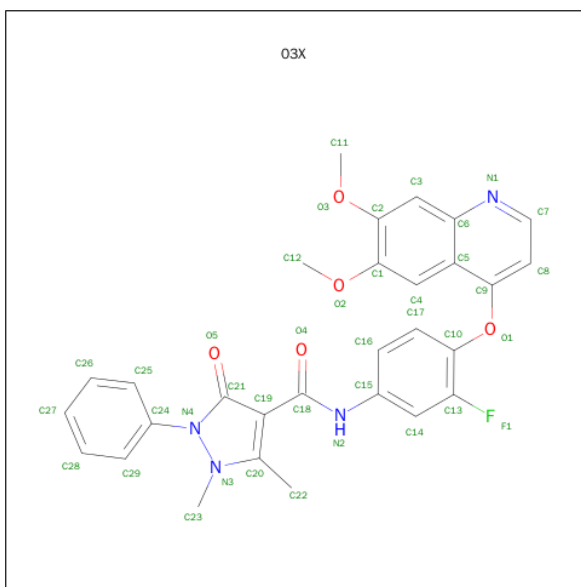
Chain	Residue	Modelled	Actual	Comment	Reference
A	916	THR	VAL	ENGINEERED MUTATION	UNP P35968
A	?	-	THR	DELETION	UNP P35968
A	?	-	LYS	DELETION	UNP P35968
A	?	-	GLY	DELETION	UNP P35968
A	?	-	ALA	DELETION	UNP P35968
A	?	-	ARG	DELETION	UNP P35968
A	?	-	PHE	DELETION	UNP P35968
A	?	-	ARG	DELETION	UNP P35968
A	?	-	GLN	DELETION	UNP P35968
A	?	-	GLY	DELETION	UNP P35968
A	?	-	LYS	DELETION	UNP P35968
A	?	-	ASP	DELETION	UNP P35968
A	?	-	TYR	DELETION	UNP P35968
A	?	-	VAL	DELETION	UNP P35968
A	?	-	GLY	DELETION	UNP P35968
A	?	-	ALA	DELETION	UNP P35968
A	?	-	ILE	DELETION	UNP P35968
A	?	-	PRO	DELETION	UNP P35968
A	?	-	VAL	DELETION	UNP P35968
A	?	-	ASP	DELETION	UNP P35968
A	?	-	LEU	DELETION	UNP P35968
A	?	-	LYS	DELETION	UNP P35968
A	?	-	ARG	DELETION	UNP P35968
A	?	-	ARG	DELETION	UNP P35968
A	?	-	LEU	DELETION	UNP P35968
A	?	-	ASP	DELETION	UNP P35968
A	?	-	SER	DELETION	UNP P35968

*Continued on next page...*

*Continued from previous page...*

Chain	Residue	Modelled	Actual	Comment	Reference
A	?	-	ILE	DELETION	UNP P35968
A	?	-	THR	DELETION	UNP P35968
A	?	-	SER	DELETION	UNP P35968
A	?	-	SER	DELETION	UNP P35968
A	?	-	GLN	DELETION	UNP P35968
A	?	-	SER	DELETION	UNP P35968
A	?	-	SER	DELETION	UNP P35968
A	?	-	ALA	DELETION	UNP P35968
A	?	-	SER	DELETION	UNP P35968
A	?	-	SER	DELETION	UNP P35968
A	?	-	GLY	DELETION	UNP P35968
A	?	-	PHE	DELETION	UNP P35968
A	?	-	VAL	DELETION	UNP P35968
A	?	-	GLU	DELETION	UNP P35968
A	?	-	GLU	DELETION	UNP P35968
A	?	-	LYS	DELETION	UNP P35968
A	?	-	SER	DELETION	UNP P35968
A	?	-	LEU	DELETION	UNP P35968
A	?	-	SER	DELETION	UNP P35968
A	?	-	ASP	DELETION	UNP P35968
A	?	-	GLU	DELETION	UNP P35968
A	?	-	GLU	DELETION	UNP P35968
A	?	-	GLU	DELETION	UNP P35968
A	990	VAL	GLU	ENGINEERED MUTATION	UNP P35968
A	1172	ARG	-	EXPRESSION TAG	UNP P35968
A	1173	HIS	-	EXPRESSION TAG	UNP P35968
A	1174	HIS	-	EXPRESSION TAG	UNP P35968
A	1175	HIS	-	EXPRESSION TAG	UNP P35968
A	1176	HIS	-	EXPRESSION TAG	UNP P35968
A	1177	HIS	-	EXPRESSION TAG	UNP P35968
A	1178	HIS	-	EXPRESSION TAG	UNP P35968

- Molecule 2 is N-{4-[(6,7-DIMETHOXYQUINOLIN-4-YL)OXY]-3-FLUOROPHENYL}-1,5-DIMETHYL-3-OXO-2-PHENYL-2,3-DIHYDRO-1H-PYRAZOLE-4-CARBOXAMIDE (three-letter code: 03X) (formula: C<sub>29</sub>H<sub>25</sub>FN<sub>4</sub>O<sub>5</sub>).



Mol	Chain	Residues	Atoms					ZeroOcc	AltConf
2	A	1	Total	C	F	N	O	0	0
			39	29	1	4	5		

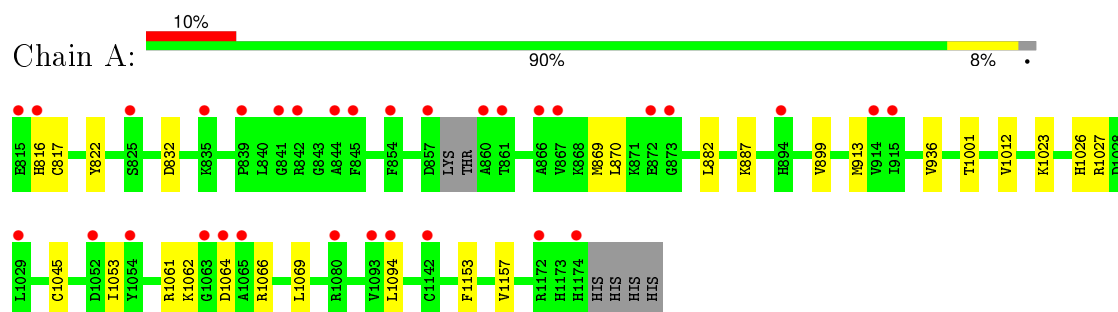
- Molecule 3 is water.

Mol	Chain	Residues	Atoms		ZeroOcc	AltConf
3	A	260	Total	O	0	0
			260	260		

### 3 Residue-property plots

These plots are drawn for all protein, RNA and DNA chains in the entry. The first graphic for a chain summarises the proportions of errors displayed in the second graphic. The second graphic shows the sequence view annotated by issues in geometry and electron density. Residues are color-coded according to the number of geometric quality criteria for which they contain at least one outlier: green = 0, yellow = 1, orange = 2 and red = 3 or more. A red dot above a residue indicates a poor fit to the electron density ( $RSRZ > 2$ ). Stretches of 2 or more consecutive residues without any outlier are shown as a green connector. Residues present in the sample, but not in the model, are shown in grey.

- Molecule 1: Vascular endothelial growth factor receptor 2



## 4 Data and refinement statistics

Property	Value	Source
Space group	P 1 21 1	Depositor
Cell constants a, b, c, $\alpha$ , $\beta$ , $\gamma$	56.19Å 65.27Å 57.32Å 90.00° 117.94° 90.00°	Depositor
Resolution (Å)	50.00 – 2.15 24.31 – 2.15	Depositor EDS
% Data completeness (in resolution range)	99.0 (50.00-2.15) 99.1 (24.31-2.15)	Depositor EDS
$R_{merge}$	0.10	Depositor
$R_{sym}$	(Not available)	Depositor
$\langle I/\sigma(I) \rangle$ <sup>1</sup>	2.35 (at 2.15Å)	Xtriage
Refinement program	REFMAC 5.2.0019	Depositor
R, $R_{free}$	0.193 , 0.230 0.188 , 0.226	Depositor DCC
$R_{free}$ test set	1449 reflections (7.87%)	DCC
Wilson B-factor (Å <sup>2</sup> )	35.3	Xtriage
Anisotropy	0.032	Xtriage
Bulk solvent $k_{sol}$ (e/Å <sup>3</sup> ), $B_{sol}$ (Å <sup>2</sup> )	0.37 , 43.2	EDS
Estimated twinning fraction	0.000 for -h-l,k,h 0.000 for l,k,-h-l 0.029 for h,-k,-h-l 0.027 for -h-l,-k,l 0.026 for l,-k,h	Xtriage
L-test for twinning <sup>2</sup>	$\langle  L  \rangle = 0.49$ , $\langle L^2 \rangle = 0.32$	Xtriage
Outliers	0 of 19863 reflections	Xtriage
$F_o, F_c$ correlation	0.95	EDS
Total number of atoms	2783	wwPDB-VP
Average B, all atoms (Å <sup>2</sup> )	34.0	wwPDB-VP

Xtriage's analysis on translational NCS is as follows: *The largest off-origin peak in the Patterson function is 7.09% of the height of the origin peak. No significant pseudotranslation is detected.*

<sup>1</sup> Intensities estimated from amplitudes.

<sup>2</sup> Theoretical values of  $\langle |L| \rangle$ ,  $\langle L^2 \rangle$  for acentric reflections are 0.5, 0.375 respectively for untwinned datasets, and 0.333, 0.2 for perfectly twinned datasets.

## 5 Model quality [i](#)

### 5.1 Standard geometry [i](#)

Bond lengths and bond angles in the following residue types are not validated in this section: 03X

The Z score for a bond length (or angle) is the number of standard deviations the observed value is removed from the expected value. A bond length (or angle) with  $|Z| > 5$  is considered an outlier worth inspection. RMSZ is the root-mean-square of all Z scores of the bond lengths (or angles).

Mol	Chain	Bond lengths		Bond angles	
		RMSZ	$\# Z  > 5$	RMSZ	$\# Z  > 5$
1	A	0.36	0/2546	0.50	0/3439

There are no bond length outliers.

There are no bond angle outliers.

There are no chirality outliers.

There are no planarity outliers.

### 5.2 Too-close contacts [i](#)

In the following table, the Non-H and H(model) columns list the number of non-hydrogen atoms and hydrogen atoms in the chain respectively. The H(added) column lists the number of hydrogen atoms added and optimized by MolProbity. The Clashes column lists the number of clashes within the asymmetric unit, whereas Symm-Clashes lists symmetry related clashes.

Mol	Chain	Non-H	H(model)	H(added)	Clashes	Symm-Clashes
1	A	2484	0	2469	14	0
2	A	39	0	25	0	0
3	A	260	0	0	0	0
All	All	2783	0	2494	14	0

The all-atom clashscore is defined as the number of clashes found per 1000 atoms (including hydrogen atoms). The all-atom clashscore for this structure is 3.

All (14) close contacts within the same asymmetric unit are listed below, sorted by their clash magnitude.

Atom-1	Atom-2	Interatomic distance (Å)	Clash overlap (Å)
1:A:822:TYR:HB2	1:A:887:LYS:HE2	1.86	0.57

*Continued on next page...*



Continued from previous page...

Atom-1	Atom-2	Interatomic distance (Å)	Clash overlap (Å)
1:A:899:VAL:HG21	1:A:1045:CYS:HB3	1.89	0.55
1:A:899:VAL:CG2	1:A:1045:CYS:HB3	2.39	0.53
1:A:1153:PHE:O	1:A:1157:VAL:HG23	2.12	0.50
1:A:1053:ILE:HD12	1:A:1066:ARG:HB2	1.96	0.48
1:A:1012:VAL:HG11	1:A:1094:LEU:CD2	2.45	0.47
1:A:936:VAL:O	1:A:1001:THR:HA	2.16	0.46
1:A:1061:ARG:HG3	1:A:1066:ARG:NH1	2.33	0.43
1:A:816:HIS:HB3	1:A:817:CYS:H	1.69	0.43
1:A:1026:HIS:O	1:A:1027:ARG:HB2	2.18	0.42
1:A:1023:LYS:HD3	1:A:1023:LYS:HA	1.77	0.42
1:A:870:LEU:HG	1:A:882:LEU:HD22	2.02	0.42
1:A:1062:LYS:HE3	1:A:1069:LEU:HD11	2.02	0.42
1:A:869:MET:HB3	1:A:913:MET:HG2	2.02	0.41

There are no symmetry-related clashes.

## 5.3 Torsion angles [i](#)

### 5.3.1 Protein backbone [i](#)

In the following table, the Percentiles column shows the percent Ramachandran outliers of the chain as a percentile score with respect to all X-ray entries followed by that with respect to entries of similar resolution.

The Analysed column shows the number of residues for which the backbone conformation was analysed, and the total number of residues.

Mol	Chain	Analysed	Favoured	Allowed	Outliers	Percentiles	
1	A	304/314 (97%)	297 (98%)	7 (2%)	0	100	100

There are no Ramachandran outliers to report.

### 5.3.2 Protein sidechains [i](#)

In the following table, the Percentiles column shows the percent sidechain outliers of the chain as a percentile score with respect to all X-ray entries followed by that with respect to entries of similar resolution.

The Analysed column shows the number of residues for which the sidechain conformation was analysed, and the total number of residues.

Mol	Chain	Analysed	Rotameric	Outliers	Percentiles	
1	A	267/273 (98%)	265 (99%)	2 (1%)	88	93

All (2) residues with a non-rotameric sidechain are listed below:

Mol	Chain	Res	Type
1	A	832	ASP
1	A	1064	ASP

Some sidechains can be flipped to improve hydrogen bonding and reduce clashes. All (3) such sidechains are listed below:

Mol	Chain	Res	Type
1	A	847	GLN
1	A	1040	ASN
1	A	1162	ASN

### 5.3.3 RNA [i](#)

There are no RNA molecules in this entry.

## 5.4 Non-standard residues in protein, DNA, RNA chains [i](#)

There are no non-standard protein/DNA/RNA residues in this entry.

## 5.5 Carbohydrates [i](#)

There are no carbohydrates in this entry.

## 5.6 Ligand geometry [i](#)

1 ligand is modelled in this entry.

In the following table, the Counts columns list the number of bonds (or angles) for which Mogul statistics could be retrieved, the number of bonds (or angles) that are observed in the model and the number of bonds (or angles) that are defined in the chemical component dictionary. The Link column lists molecule types, if any, to which the group is linked. The Z score for a bond length (or angle) is the number of standard deviations the observed value is removed from the expected value. A bond length (or angle) with  $|Z| > 2$  is considered an outlier worth inspection. RMSZ is the root-mean-square of all Z scores of the bond lengths (or angles).

Mol	Type	Chain	Res	Link	Bond lengths			Bond angles		
					Counts	RMSZ	# Z  > 2	Counts	RMSZ	# Z  > 2
2	03X	A	1	-	38,43,43	1.21	4 (10%)	48,62,62	1.38	7 (14%)

In the following table, the Chirals column lists the number of chiral outliers, the number of chiral centers analysed, the number of these observed in the model and the number defined in the chemical component dictionary. Similar counts are reported in the Torsion and Rings columns. '-' means no outliers of that kind were identified.

Mol	Type	Chain	Res	Link	Chirals	Torsions	Rings
2	03X	A	1	-	-	0/16/20/20	0/5/5/5

All (4) bond length outliers are listed below:

Mol	Chain	Res	Type	Atoms	Z	Observed(Å)	Ideal(Å)
2	A	1	03X	C15-N2	-4.20	1.33	1.41
2	A	1	03X	C3-C2	2.06	1.40	1.36
2	A	1	03X	C19-C18	2.21	1.54	1.51
2	A	1	03X	C4-C1	2.28	1.40	1.36

All (7) bond angle outliers are listed below:

Mol	Chain	Res	Type	Atoms	Z	Observed(°)	Ideal(°)
2	A	1	03X	C8-C7-N1	-2.52	120.58	124.56
2	A	1	03X	O3-C2-C3	-2.49	121.91	125.25
2	A	1	03X	O2-C1-C4	-2.23	122.27	125.25
2	A	1	03X	O3-C2-C1	2.25	118.61	115.40
2	A	1	03X	C7-N1-C6	2.64	121.35	116.87
2	A	1	03X	O1-C9-C5	2.73	120.45	115.12
2	A	1	03X	C25-C24-N4	2.74	122.23	119.10

There are no chirality outliers.

There are no torsion outliers.

There are no ring outliers.

No monomer is involved in short contacts.

## 5.7 Other polymers ⓘ

There are no such residues in this entry.

## 5.8 Polymer linkage issues ⓘ

There are no chain breaks in this entry.

## 6 Fit of model and data ⓘ

### 6.1 Protein, DNA and RNA chains ⓘ

In the following table, the column labelled ‘#RSRZ> 2’ contains the number (and percentage) of RSRZ outliers, followed by percent RSRZ outliers for the chain as percentile scores relative to all X-ray entries and entries of similar resolution. The OWAB column contains the minimum, median, 95<sup>th</sup> percentile and maximum values of the occupancy-weighted average B-factor per residue. The column labelled ‘Q< 0.9’ lists the number of (and percentage) of residues with an average occupancy less than 0.9.

Mol	Chain	Analysed	<RSRZ>	#RSRZ>2	OWAB(Å <sup>2</sup> )	Q<0.9
1	A	308/314 (98%)	0.50	32 (10%) 8 14	19, 31, 51, 69	0

All (32) RSRZ outliers are listed below:

Mol	Chain	Res	Type	RSRZ
1	A	860	ALA	6.3
1	A	1054	TYR	5.2
1	A	842	ARG	5.0
1	A	1064	ASP	4.5
1	A	815	GLU	4.0
1	A	844	ALA	3.7
1	A	825	SER	3.5
1	A	861	THR	3.3
1	A	845	PHE	3.3
1	A	872	GLU	3.3
1	A	867	VAL	3.3
1	A	816	HIS	3.3
1	A	1065	ALA	3.2
1	A	857	ASP	3.2
1	A	854	PHE	3.1
1	A	1052	ASP	3.0
1	A	1174	HIS	2.9
1	A	841	GLY	2.8
1	A	914	VAL	2.8
1	A	894	HIS	2.7
1	A	1093	VAL	2.6
1	A	1094	LEU	2.6
1	A	873	GLY	2.5
1	A	1080	ARG	2.5
1	A	915	ILE	2.5
1	A	1029	LEU	2.3
1	A	1063	GLY	2.2

*Continued on next page...*

*Continued from previous page...*

Mol	Chain	Res	Type	RSRZ
1	A	1142	CYS	2.1
1	A	835	LYS	2.1
1	A	839	PRO	2.1
1	A	866	ALA	2.1
1	A	1172	ARG	2.0

## 6.2 Non-standard residues in protein, DNA, RNA chains [i](#)

There are no non-standard protein/DNA/RNA residues in this entry.

## 6.3 Carbohydrates [i](#)

There are no carbohydrates in this entry.

## 6.4 Ligands [i](#)

In the following table, the Atoms column lists the number of modelled atoms in the group and the number defined in the chemical component dictionary. LLDF column lists the quality of electron density of the group with respect to its neighbouring residues in protein, DNA or RNA chains. The B-factors column lists the minimum, median, 95<sup>th</sup> percentile and maximum values of B factors of atoms in the group. The column labelled 'Q < 0.9' lists the number of atoms with occupancy less than 0.9.

Mol	Type	Chain	Res	Atoms	RSCC	RSR	LLDF	B-factors(Å <sup>2</sup> )	Q<0.9
2	03X	A	1	39/39	0.94	0.14	-0.33	27,29,30,31	0

## 6.5 Other polymers [i](#)

There are no such residues in this entry.