



Full wwPDB X-ray Structure Validation Report ⓘ

Feb 1, 2016 – 08:52 PM GMT

PDB ID : 4U6R
Title : Crystal structure of human IRE1 cytoplasmic domains in complex with a sulfonamide inhibitor.
Authors : Mohr, C.
Deposited on : 2014-07-29
Resolution : 2.50 Å(reported)

This is a Full wwPDB X-ray Structure Validation Report for a publicly released PDB entry.
We welcome your comments at validation@mail.wwpdb.org
A user guide is available at
<http://wwpdb.org/validation/2016/XrayValidationReportHelp>
with specific help available everywhere you see the ⓘ symbol.

The following versions of software and data (see [references ⓘ](#)) were used in the production of this report:

MolProbity : 4.02b-467
Mogul : 1.7 (RC4), CSD as536be (2015)
Xtriage (Phenix) : 1.9-1692
EDS : rb-20026688
Percentile statistics : 20151230.v01 (using entries in the PDB archive December 30th 2015)
Refmac : 5.8.0135
CCP4 : 6.5.0
Ideal geometry (proteins) : Engh & Huber (2001)
Ideal geometry (DNA, RNA) : Parkinson et al. (1996)
Validation Pipeline (wwPDB-VP) : trunk26865

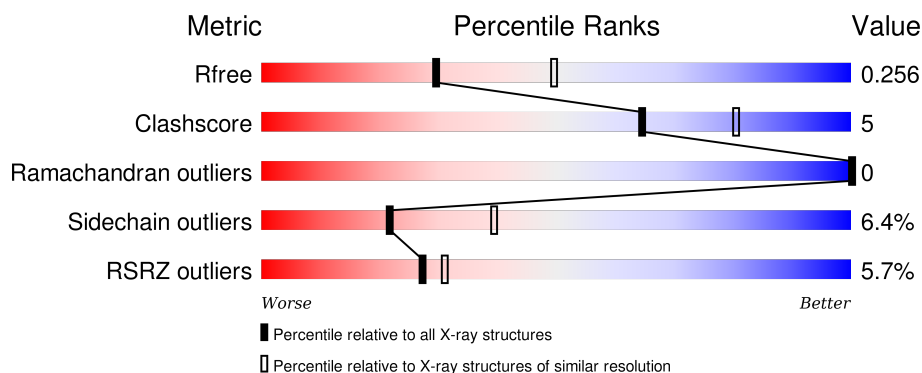
1 Overall quality at a glance

The following experimental techniques were used to determine the structure:

X-RAY DIFFRACTION


The reported resolution of this entry is 2.50 Å.

Percentile scores (ranging between 0-100) for global validation metrics of the entry are shown in the following graphic. The table shows the number of entries on which the scores are based.



Metric	Whole archive (#Entries)	Similar resolution (#Entries, resolution range(Å))
R_{free}	91344	3553 (2.50-2.50)
Clashscore	102246	4242 (2.50-2.50)
Ramachandran outliers	100387	4156 (2.50-2.50)
Sidechain outliers	100360	4158 (2.50-2.50)
RSRZ outliers	91569	3562 (2.50-2.50)

The table below summarises the geometric issues observed across the polymeric chains and their fit to the electron density. The red, orange, yellow and green segments on the lower bar indicate the fraction of residues that contain outliers for ≥ 3 , 2, 1 and 0 types of geometric quality criteria. A grey segment represents the fraction of residues that are not modelled. The numeric value for each fraction is indicated below the corresponding segment, with a dot representing fractions $\leq 5\%$. The upper red bar (where present) indicates the fraction of residues that have poor fit to the electron density. The numeric value is given above the bar.

Mol	Chain	Length	Quality of chain
1	A	455	

The following table lists non-polymeric compounds, carbohydrate monomers and non-standard residues in protein, DNA, RNA chains that are outliers for geometric or electron-density-fit criteria:

Mol	Type	Chain	Res	Chirality	Geometry	Clashes	Electron density
5	EPE	A	1008	-	-	-	X

2 Entry composition

There are 6 unique types of molecules in this entry. The entry contains 3429 atoms, of which 0 are hydrogens and 0 are deuteriums.

In the tables below, the ZeroOcc column contains the number of atoms modelled with zero occupancy, the AltConf column contains the number of residues with at least one atom in alternate conformation and the Trace column contains the number of residues modelled with at most 2 atoms.

- Molecule 1 is a protein called Serine/threonine-protein kinase/endoribonuclease IRE1.

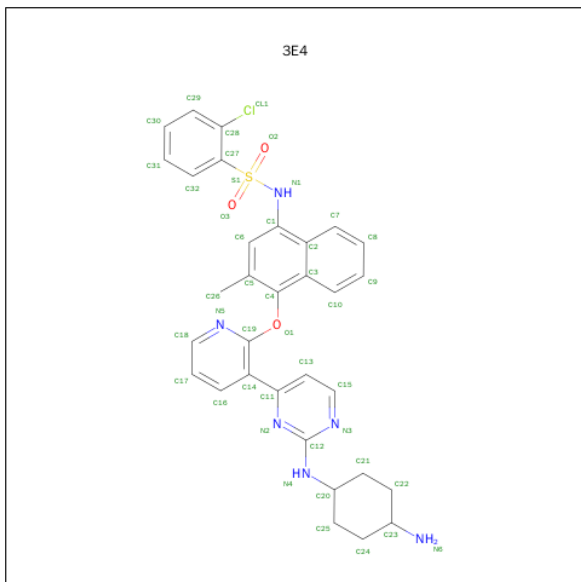
Mol	Chain	Residues	Atoms					ZeroOcc	AltConf	Trace
1	A	403	Total	C	N	O	S	0	0	0
			3260	2076	580	584	20			

There are 25 discrepancies between the modelled and reference sequences:

Chain	Residue	Modelled	Actual	Comment	Reference
A	523	MET	-	initiating methionine	UNP O75460
A	524	GLY	-	expression tag	UNP O75460
A	525	HIS	-	expression tag	UNP O75460
A	526	ASN	-	expression tag	UNP O75460
A	527	HIS	-	expression tag	UNP O75460
A	528	ARG	-	expression tag	UNP O75460
A	529	HIS	-	expression tag	UNP O75460
A	530	LYS	-	expression tag	UNP O75460
A	531	HIS	-	expression tag	UNP O75460
A	532	HIS	-	expression tag	UNP O75460
A	533	HIS	-	expression tag	UNP O75460
A	534	HIS	-	expression tag	UNP O75460
A	535	HIS	-	expression tag	UNP O75460
A	536	HIS	-	expression tag	UNP O75460
A	537	HIS	-	expression tag	UNP O75460
A	538	HIS	-	expression tag	UNP O75460
A	539	GLU	-	expression tag	UNP O75460
A	540	ASN	-	expression tag	UNP O75460
A	541	LEU	-	expression tag	UNP O75460
A	542	TYR	-	expression tag	UNP O75460
A	543	PHE	-	expression tag	UNP O75460
A	544	GLN	-	expression tag	UNP O75460
A	545	GLY	-	expression tag	UNP O75460
A	546	PRO	-	expression tag	UNP O75460
A	924	THR	SER	see remark 999	UNP O75460

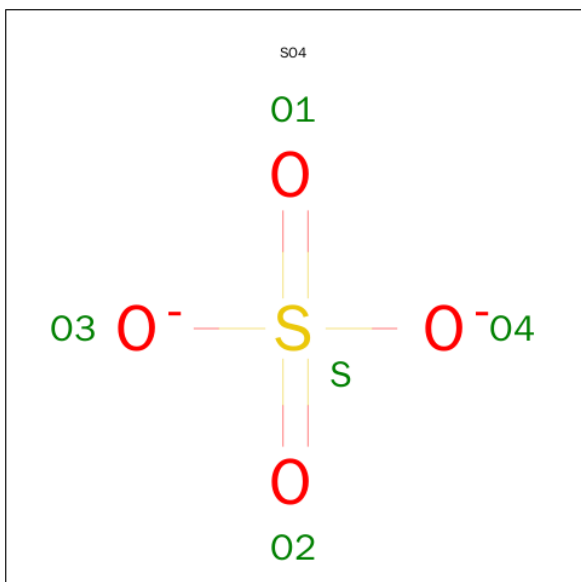
- Molecule 2 is N-{4-[(3-{2-[(trans-4-aminocyclohexyl)amino]pyrimidin-4-yl}pyridin-2-yl)oxy

[3-methylnaphthalen-1-yl]-2-chlorobenzenesulfonamide (three-letter code: 3E4) (formula: $C_{32}H_{31}ClN_6O_3S$).



Mol	Chain	Residues	Atoms						ZeroOcc	AltConf
2	A	1	Total	C	Cl	N	O	S	0	0
			43	32	1	6	3	1		

- Molecule 3 is SULFATE ION (three-letter code: SO4) (formula: O_4S).



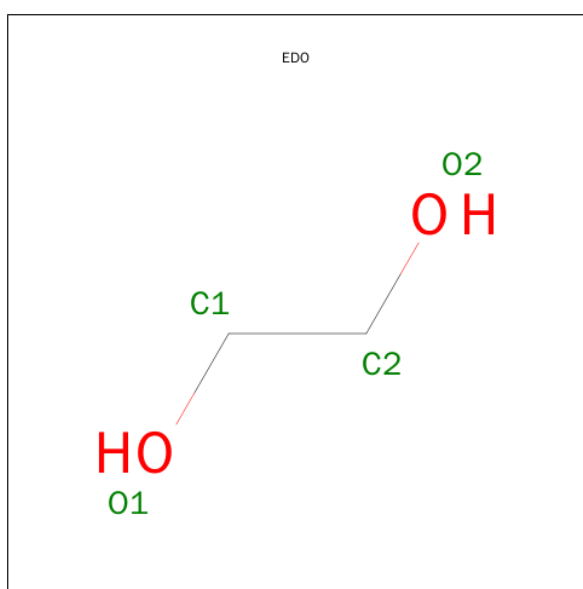
Mol	Chain	Residues	Atoms			ZeroOcc	AltConf
3	A	1	Total	O	S	0	0
			5	4	1		

Continued on next page...

Continued from previous page...

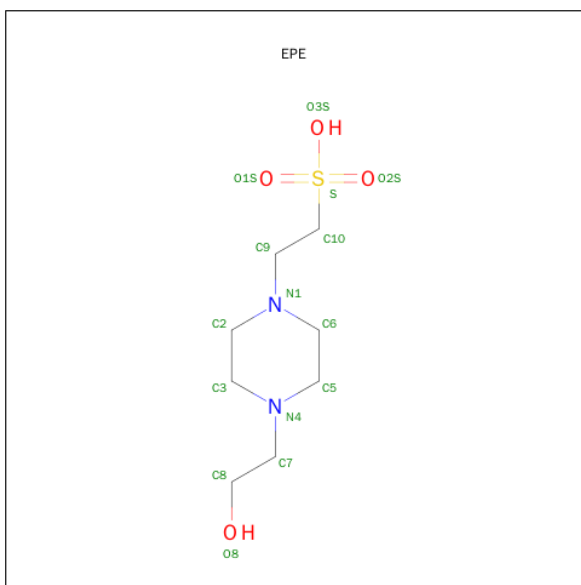
Mol	Chain	Residues	Atoms			ZeroOcc	AltConf
3	A	1	Total	O	S	0	0
			5	4	1		
3	A	1	Total	O	S	0	0
			5	4	1		
3	A	1	Total	O	S	0	0
			5	4	1		
3	A	1	Total	O	S	0	0
			5	4	1		

- Molecule 4 is 1,2-ETHANEDIOL (three-letter code: EDO) (formula: C₂H₆O₂).



Mol	Chain	Residues	Atoms			ZeroOcc	AltConf
4	A	1	Total	C	O	0	0
			4	2	2		

- Molecule 5 is 4-(2-HYDROXYETHYL)-1-PIPERAZINE ETHANESULFONIC ACID (three-letter code: EPE) (formula: C₈H₁₈N₂O₄S).



Mol	Chain	Residues	Atoms					ZeroOcc	AltConf
5	A	1	Total	C	N	O	S	0	0
			15	8	2	4	1		

- Molecule 6 is water.

Mol	Chain	Residues	Atoms		ZeroOcc	AltConf
6	A	82	Total	O	0	0
			82	82		

4 Data and refinement statistics

Property	Value	Source
Space group	P 21 21 21	Depositor
Cell constants a, b, c, α , β , γ	76.85Å 86.43Å 91.82Å 90.00° 90.00° 90.00°	Depositor
Resolution (Å)	29.47 – 2.50 29.12 – 2.50	Depositor EDS
% Data completeness (in resolution range)	98.8 (29.47-2.50) 98.9 (29.12-2.50)	Depositor EDS
R_{merge}	0.09	Depositor
R_{sym}	(Not available)	Depositor
$\langle I/\sigma(I) \rangle$ ¹	3.97 (at 2.51Å)	Xtriage
Refinement program	REFMAC 5.8.0049	Depositor
R, R_{free}	0.202 , 0.246 0.206 , 0.256	Depositor DCC
R_{free} test set	1097 reflections (5.38%)	DCC
Wilson B-factor (Å ²)	40.4	Xtriage
Anisotropy	0.168	Xtriage
Bulk solvent k_{sol} (e/Å ³), B_{sol} (Å ²)	0.34 , 36.6	EDS
Estimated twinning fraction	No twinning to report.	Xtriage
L-test for twinning ²	$\langle L \rangle = 0.49$, $\langle L^2 \rangle = 0.32$	Xtriage
Outliers	0 of 21474 reflections	Xtriage
F_o, F_c correlation	0.94	EDS
Total number of atoms	3429	wwPDB-VP
Average B, all atoms (Å ²)	43.0	wwPDB-VP

Xtriage's analysis on translational NCS is as follows: *The largest off-origin peak in the Patterson function is 4.64% of the height of the origin peak. No significant pseudotranslation is detected.*

¹Intensities estimated from amplitudes.

²Theoretical values of $\langle |L| \rangle$, $\langle L^2 \rangle$ for acentric reflections are 0.5, 0.375 respectively for untwinned datasets, and 0.333, 0.2 for perfectly twinned datasets.

5 Model quality [i](#)

5.1 Standard geometry [i](#)

Bond lengths and bond angles in the following residue types are not validated in this section: EPE, EDO, 3E4, SO4

The Z score for a bond length (or angle) is the number of standard deviations the observed value is removed from the expected value. A bond length (or angle) with $|Z| > 5$ is considered an outlier worth inspection. RMSZ is the root-mean-square of all Z scores of the bond lengths (or angles).

Mol	Chain	Bond lengths		Bond angles	
		RMSZ	$\# Z > 5$	RMSZ	$\# Z > 5$
1	A	0.48	0/3340	0.65	1/4509 (0.0%)

There are no bond length outliers.

All (1) bond angle outliers are listed below:

Mol	Chain	Res	Type	Atoms	Z	Observed($^{\circ}$)	Ideal($^{\circ}$)
1	A	815	MET	CG-SD-CE	5.14	108.43	100.20

There are no chirality outliers.

There are no planarity outliers.

5.2 Too-close contacts [i](#)

In the following table, the Non-H and H(model) columns list the number of non-hydrogen atoms and hydrogen atoms in the chain respectively. The H(added) column lists the number of hydrogen atoms added and optimized by MolProbity. The Clashes column lists the number of clashes within the asymmetric unit, whereas Symm-Clashes lists symmetry related clashes.

Mol	Chain	Non-H	H(model)	H(added)	Clashes	Symm-Clashes
1	A	3260	0	3243	33	0
2	A	43	0	31	2	0
3	A	25	0	0	0	0
4	A	4	0	6	0	0
5	A	15	0	17	0	0
6	A	82	0	0	2	0
All	All	3429	0	3297	34	0

The all-atom clashscore is defined as the number of clashes found per 1000 atoms (including hydrogen atoms). The all-atom clashscore for this structure is 5.

All (34) close contacts within the same asymmetric unit are listed below, sorted by their clash magnitude.

Atom-1	Atom-2	Interatomic distance (Å)	Clash overlap (Å)
1:A:962:PHE:O	1:A:963:HIS:HB2	1.89	0.71
1:A:616:LEU:HD23	1:A:620:ASP:HB3	1.77	0.65
1:A:616:LEU:HD11	1:A:712:PHE:CD2	2.35	0.61
1:A:887:ARG:HH11	1:A:888:LYS:HE3	1.67	0.59
1:A:728:ARG:NH2	6:A:1101:HOH:O	2.37	0.57
1:A:626:ILE:HG12	1:A:642:ILE:HD12	1.85	0.57
1:A:620:ASP:OD2	1:A:627:ARG:HA	2.06	0.56
1:A:616:LEU:HD11	1:A:712:PHE:CE2	2.41	0.55
2:A:1001:3E4:O1	2:A:1001:3E4:H16	2.06	0.55
1:A:887:ARG:NH1	1:A:888:LYS:HE3	2.23	0.54
1:A:788:GLY:HA2	1:A:815:MET:SD	2.48	0.54
1:A:843:GLN:OE1	1:A:908:LYS:HD3	2.09	0.52
1:A:740:PRO:HG3	1:A:815:MET:HE3	1.93	0.51
1:A:740:PRO:HG3	1:A:815:MET:CE	2.41	0.50
1:A:566:VAL:HG12	1:A:632:GLU:HB3	1.94	0.50
1:A:603:PRO:HA	1:A:606:PHE:CE1	2.48	0.49
1:A:815:MET:HE3	1:A:815:MET:HA	1.97	0.47
1:A:712:PHE:HD1	1:A:715:CYS:SG	2.37	0.47
1:A:796:HIS:ND1	1:A:797:PRO:HD2	2.29	0.47
1:A:936:ARG:NH1	6:A:1174:HOH:O	2.49	0.46
1:A:603:PRO:HA	1:A:606:PHE:CD1	2.51	0.45
1:A:796:HIS:HB3	1:A:799:LYS:HB2	2.00	0.44
1:A:598:VAL:HA	1:A:640:ILE:O	2.19	0.43
1:A:616:LEU:HD13	2:A:1001:3E4:C31	2.49	0.43
1:A:958:GLN:N	1:A:959:PRO:CD	2.82	0.42
1:A:891:THR:HG23	1:A:902:ARG:HH22	1.85	0.42
1:A:871:LYS:O	1:A:872:MET:HB2	2.20	0.42
1:A:626:ILE:HD13	1:A:695:LEU:HD12	2.02	0.42
1:A:686:HIS:O	1:A:687:ARG:HB2	2.20	0.41
1:A:620:ASP:HB2	1:A:626:ILE:O	2.21	0.41
1:A:618:GLU:HA	1:A:618:GLU:OE2	2.21	0.41
1:A:808:LEU:HB2	1:A:829:HIS:CE1	2.56	0.40
1:A:602:LEU:HB3	1:A:603:PRO:CD	2.50	0.40
1:A:854:LEU:HD12	1:A:854:LEU:O	2.22	0.40

There are no symmetry-related clashes.

5.3 Torsion angles

5.3.1 Protein backbone

In the following table, the Percentiles column shows the percent Ramachandran outliers of the chain as a percentile score with respect to all X-ray entries followed by that with respect to entries of similar resolution.

The Analysed column shows the number of residues for which the backbone conformation was analysed, and the total number of residues.

Mol	Chain	Analysed	Favoured	Allowed	Outliers	Percentiles	
1	A	401/455 (88%)	392 (98%)	9 (2%)	0	100	100

There are no Ramachandran outliers to report.

5.3.2 Protein sidechains

In the following table, the Percentiles column shows the percent sidechain outliers of the chain as a percentile score with respect to all X-ray entries followed by that with respect to entries of similar resolution.

The Analysed column shows the number of residues for which the sidechain conformation was analysed, and the total number of residues.

Mol	Chain	Analysed	Rotameric	Outliers	Percentiles	
1	A	357/404 (88%)	334 (94%)	23 (6%)	22	39

All (23) residues with a non-rotameric sidechain are listed below:

Mol	Chain	Res	Type
1	A	574	LYS
1	A	611	ARG
1	A	614	GLN
1	A	616	LEU
1	A	620	ASP
1	A	634	ASP
1	A	669	LEU
1	A	735	GLU
1	A	743	LEU
1	A	779	LEU
1	A	780	GLN
1	A	794	CYS
1	A	799	LYS

Continued on next page...

Continued from previous page...

Mol	Chain	Res	Type
1	A	815	MET
1	A	853	SER
1	A	860	LYS
1	A	870	VAL
1	A	905	ARG
1	A	912	ARG
1	A	924	THR
1	A	956	LEU
1	A	958	GLN
1	A	963	HIS

Some sidechains can be flipped to improve hydrogen bonding and reduce clashes. All (3) such sidechains are listed below:

Mol	Chain	Res	Type
1	A	614	GLN
1	A	750	ASN
1	A	906	ASN

5.3.3 RNA [i](#)

There are no RNA molecules in this entry.

5.4 Non-standard residues in protein, DNA, RNA chains [i](#)

There are no non-standard protein/DNA/RNA residues in this entry.

5.5 Carbohydrates [i](#)

There are no carbohydrates in this entry.

5.6 Ligand geometry [i](#)

8 ligands are modelled in this entry.

In the following table, the Counts columns list the number of bonds (or angles) for which Mogul statistics could be retrieved, the number of bonds (or angles) that are observed in the model and the number of bonds (or angles) that are defined in the chemical component dictionary. The Link column lists molecule types, if any, to which the group is linked. The Z score for a bond length (or angle) is the number of standard deviations the observed value is removed from the expected

value. A bond length (or angle) with $|Z| > 2$ is considered an outlier worth inspection. RMSZ is the root-mean-square of all Z scores of the bond lengths (or angles).

Mol	Type	Chain	Res	Link	Bond lengths			Bond angles		
					Counts	RMSZ	$\# Z > 2$	Counts	RMSZ	$\# Z > 2$
2	3E4	A	1001	-	48,48,48	2.81	18 (37%)	63,69,69	2.66	18 (28%)
3	SO4	A	1002	-	4,4,4	0.33	0	6,6,6	0.25	0
3	SO4	A	1003	-	4,4,4	0.37	0	6,6,6	0.21	0
3	SO4	A	1004	-	4,4,4	0.36	0	6,6,6	0.33	0
3	SO4	A	1005	-	4,4,4	0.34	0	6,6,6	0.45	0
3	SO4	A	1006	-	4,4,4	0.55	0	6,6,6	1.06	1 (16%)
4	EDO	A	1007	-	3,3,3	0.52	0	2,2,2	0.41	0
5	EPE	A	1008	-	14,15,15	1.53	2 (14%)	18,20,20	1.65	3 (16%)

In the following table, the Chirals column lists the number of chiral outliers, the number of chiral centers analysed, the number of these observed in the model and the number defined in the chemical component dictionary. Similar counts are reported in the Torsions and Rings columns. '-' means no outliers of that kind were identified.

Mol	Type	Chain	Res	Link	Chirals	Torsions	Rings
2	3E4	A	1001	-	-	0/23/33/33	0/6/6/6
3	SO4	A	1002	-	-	0/0/0/0	0/0/0/0
3	SO4	A	1003	-	-	0/0/0/0	0/0/0/0
3	SO4	A	1004	-	-	0/0/0/0	0/0/0/0
3	SO4	A	1005	-	-	0/0/0/0	0/0/0/0
3	SO4	A	1006	-	-	0/0/0/0	0/0/0/0
4	EDO	A	1007	-	-	0/1/1/1	0/0/0/0
5	EPE	A	1008	-	-	0/9/19/19	0/1/1/1

All (20) bond length outliers are listed below:

Mol	Chain	Res	Type	Atoms	Z	Observed(Å)	Ideal(Å)
2	A	1001	3E4	C1-N1	-10.45	1.30	1.42
2	A	1001	3E4	C27-S1	-8.31	1.65	1.77
2	A	1001	3E4	C12-N4	-4.73	1.28	1.34
2	A	1001	3E4	C14-C19	-4.49	1.37	1.41
2	A	1001	3E4	C4-C3	-4.09	1.35	1.43
2	A	1001	3E4	C11-N2	-3.72	1.29	1.34
2	A	1001	3E4	C2-C3	-3.63	1.36	1.43
2	A	1001	3E4	O1-C4	-3.29	1.32	1.39
2	A	1001	3E4	C1-C2	-3.22	1.37	1.43
2	A	1001	3E4	C14-C11	-3.02	1.38	1.48
2	A	1001	3E4	C10-C3	-2.89	1.36	1.42
2	A	1001	3E4	C12-N3	-2.66	1.31	1.34

Continued on next page...

Continued from previous page...

Mol	Chain	Res	Type	Atoms	Z	Observed(Å)	Ideal(Å)
2	A	1001	3E4	C7-C2	-2.49	1.37	1.42
2	A	1001	3E4	C6-C5	-2.41	1.36	1.39
2	A	1001	3E4	C15-N3	-2.38	1.29	1.34
2	A	1001	3E4	C28-CL1	-2.24	1.68	1.73
2	A	1001	3E4	C18-N5	-2.12	1.30	1.34
5	A	1008	EPE	O3S-S	-2.05	1.41	1.46
2	A	1001	3E4	O2-S1	2.19	1.45	1.43
5	A	1008	EPE	O2S-S	5.02	1.60	1.45

All (22) bond angle outliers are listed below:

Mol	Chain	Res	Type	Atoms	Z	Observed(°)	Ideal(°)
2	A	1001	3E4	N3-C12-N2	-5.47	120.84	126.67
2	A	1001	3E4	O2-S1-C27	-5.21	99.05	107.63
2	A	1001	3E4	O3-S1-O2	-4.87	113.08	119.54
2	A	1001	3E4	C13-C15-N3	-4.71	118.52	123.90
2	A	1001	3E4	C5-C4-C3	-3.93	118.93	122.72
2	A	1001	3E4	C32-C27-S1	-2.99	113.75	117.39
2	A	1001	3E4	C13-C11-N2	-2.56	118.48	122.01
5	A	1008	EPE	C3-C2-N1	-2.30	106.52	110.63
5	A	1008	EPE	C5-C6-N1	-2.15	106.77	110.63
2	A	1001	3E4	C21-C20-C25	-2.03	107.37	110.82
2	A	1001	3E4	C27-C28-CL1	2.12	123.08	121.54
3	A	1006	SO4	O4-S-O3	2.44	118.92	108.98
2	A	1001	3E4	C18-N5-C19	2.46	122.85	116.57
2	A	1001	3E4	C29-C28-C27	2.67	121.80	120.14
2	A	1001	3E4	O2-S1-N1	2.85	113.92	106.69
2	A	1001	3E4	C6-C5-C4	2.90	120.36	118.22
5	A	1008	EPE	O2S-S-C10	4.27	110.55	106.91
2	A	1001	3E4	C28-C27-S1	5.44	126.63	123.30
2	A	1001	3E4	C4-O1-C19	6.34	124.37	116.97
2	A	1001	3E4	C15-N3-C12	6.90	121.48	115.49
2	A	1001	3E4	C11-N2-C12	7.04	121.74	116.49
2	A	1001	3E4	C27-S1-N1	7.13	115.11	107.25

There are no chirality outliers.

There are no torsion outliers.

There are no ring outliers.

1 monomer is involved in 2 short contacts:

Mol	Chain	Res	Type	Clashes	Symm-Clashes
2	A	1001	3E4	2	0

5.7 Other polymers [i](#)

There are no such residues in this entry.

5.8 Polymer linkage issues [i](#)

There are no chain breaks in this entry.

6 Fit of model and data ⓘ

6.1 Protein, DNA and RNA chains ⓘ

In the following table, the column labelled ‘#RSRZ> 2’ contains the number (and percentage) of RSRZ outliers, followed by percent RSRZ outliers for the chain as percentile scores relative to all X-ray entries and entries of similar resolution. The OWAB column contains the minimum, median, 95th percentile and maximum values of the occupancy-weighted average B-factor per residue. The column labelled ‘Q< 0.9’ lists the number of (and percentage) of residues with an average occupancy less than 0.9.

Mol	Chain	Analysed	<RSRZ>	#RSRZ>2		OWAB(Å ²)	Q<0.9
1	A	403/455 (88%)	0.13	23 (5%)	27 31	21, 41, 71, 101	0

All (23) RSRZ outliers are listed below:

Mol	Chain	Res	Type	RSRZ
1	A	608	PHE	5.9
1	A	620	ASP	5.2
1	A	603	PRO	3.8
1	A	720	VAL	3.8
1	A	619	SER	3.3
1	A	607	SER	3.2
1	A	635	ARG	3.2
1	A	605	CYS	3.1
1	A	614	GLN	3.0
1	A	611	ARG	3.0
1	A	616	LEU	2.9
1	A	561	THR	2.8
1	A	901	LEU	2.8
1	A	880	VAL	2.6
1	A	610	ASP	2.4
1	A	613	VAL	2.3
1	A	660	HIS	2.3
1	A	920	GLU	2.2
1	A	746	ASP	2.2
1	A	887	ARG	2.1
1	A	609	ALA	2.1
1	A	864	ARG	2.1
1	A	730	GLY	2.0

6.2 Non-standard residues in protein, DNA, RNA chains [i](#)

There are no non-standard protein/DNA/RNA residues in this entry.

6.3 Carbohydrates [i](#)

There are no carbohydrates in this entry.

6.4 Ligands [i](#)

In the following table, the Atoms column lists the number of modelled atoms in the group and the number defined in the chemical component dictionary. LLDF column lists the quality of electron density of the group with respect to its neighbouring residues in protein, DNA or RNA chains. The B-factors column lists the minimum, median, 95th percentile and maximum values of B factors of atoms in the group. The column labelled 'Q< 0.9' lists the number of atoms with occupancy less than 0.9.

Mol	Type	Chain	Res	Atoms	RSCC	RSR	LLDF	B-factors(\AA^2)	Q<0.9
5	EPE	A	1008	15/15	0.96	0.19	2.35	48,53,58,59	0
3	SO4	A	1006	5/5	0.85	0.25	0.62	61,62,77,77	0
2	3E4	A	1001	43/43	0.93	0.12	-0.71	27,31,52,63	0
3	SO4	A	1003	5/5	0.92	0.23	-	55,58,62,66	0
3	SO4	A	1002	5/5	0.97	0.21	-	55,56,58,60	0
3	SO4	A	1004	5/5	0.92	0.23	-	55,58,60,60	0
3	SO4	A	1005	5/5	0.92	0.22	-	66,71,71,75	0
4	EDO	A	1007	4/4	0.77	0.20	-	62,63,65,65	0

6.5 Other polymers [i](#)

There are no such residues in this entry.