



Full wwPDB X-ray Structure Validation Report ⓘ

Jan 31, 2016 – 10:33 PM GMT

PDB ID : 1U74
Title : Electron Transfer Complex between cytochrome C and cytochrome C peroxidase
Authors : Crane, B.R.; Kang, S.A.
Deposited on : 2004-08-02
Resolution : 2.40 Å(reported)

This is a Full wwPDB X-ray Structure Validation Report for a publicly released PDB entry.
We welcome your comments at validation@mail.wwpdb.org
A user guide is available at
<http://wwpdb.org/validation/2016/XrayValidationReportHelp>
with specific help available everywhere you see the ⓘ symbol.

The following versions of software and data (see [references ⓘ](#)) were used in the production of this report:

MolProbity : 4.02b-467
Mogul : 1.7 (RC4), CSD as536be (2015)
Xtriage (Phenix) : 1.9-1692
EDS : rb-20026688
Percentile statistics : 20151230.v01 (using entries in the PDB archive December 30th 2015)
Refmac : 5.8.0135
CCP4 : 6.5.0
Ideal geometry (proteins) : Engh & Huber (2001)
Ideal geometry (DNA, RNA) : Parkinson et al. (1996)
Validation Pipeline (wwPDB-VP) : trunk26865

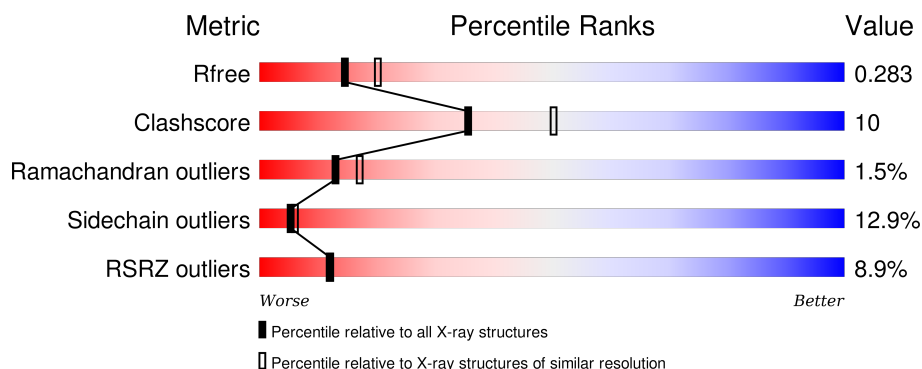
1 Overall quality at a glance

The following experimental techniques were used to determine the structure:

X-RAY DIFFRACTION

The reported resolution of this entry is 2.40 Å.

Percentile scores (ranging between 0-100) for global validation metrics of the entry are shown in the following graphic. The table shows the number of entries on which the scores are based.



Metric	Whole archive (#Entries)	Similar resolution (#Entries, resolution range(Å))
R_{free}	91344	2919 (2.40-2.40)
Clashscore	102246	3407 (2.40-2.40)
Ramachandran outliers	100387	3351 (2.40-2.40)
Sidechain outliers	100360	3352 (2.40-2.40)
RSRZ outliers	91569	2928 (2.40-2.40)

The table below summarises the geometric issues observed across the polymeric chains and their fit to the electron density. The red, orange, yellow and green segments on the lower bar indicate the fraction of residues that contain outliers for ≥ 3 , 2, 1 and 0 types of geometric quality criteria. A grey segment represents the fraction of residues that are not modelled. The numeric value for each fraction is indicated below the corresponding segment, with a dot representing fractions $\leq 5\%$. The upper red bar (where present) indicates the fraction of residues that have poor fit to the electron density. The numeric value is given above the bar.

Mol	Chain	Length	Quality of chain
1	A	296	<div> <div>2%</div> <div>77%</div> <div>20%</div> <div>..</div> </div>
1	C	296	<div> <div>2%</div> <div>79%</div> <div>18%</div> <div>.</div> </div>
2	B	108	<div> <div>17%</div> <div>67%</div> <div>26%</div> <div>6%</div> <div>.</div> </div>
2	D	108	<div> <div>38%</div> <div>63%</div> <div>29%</div> <div>8%</div> </div>

The following table lists non-polymeric compounds, carbohydrate monomers and non-standard residues in protein, DNA, RNA chains that are outliers for geometric or electron-density-fit crite-

ria:

Mol	Type	Chain	Res	Chirality	Geometry	Clashes	Electron density
3	PO4	A	2202	-	-	X	X
3	PO4	C	2201	-	-	X	-

2 Entry composition

There are 6 unique types of molecules in this entry. The entry contains 6950 atoms, of which 0 are hydrogens and 0 are deuteriums.

In the tables below, the ZeroOcc column contains the number of atoms modelled with zero occupancy, the AltConf column contains the number of residues with at least one atom in alternate conformation and the Trace column contains the number of residues modelled with at most 2 atoms.

- Molecule 1 is a protein called cytochrome c peroxidase.

Mol	Chain	Residues	Atoms					ZeroOcc	AltConf	Trace
1	A	294	Total	C	N	O	S	0	0	0
			2371	1514	395	456	6			
1	C	295	Total	C	N	O	S	0	0	0
			2379	1520	396	457	6			

There are 4 discrepancies between the modelled and reference sequences:

Chain	Residue	Modelled	Actual	Comment	Reference
A	-1	MET	-	CLONING ARTIFACT	UNP P00431
A	0	ILE	-	CLONING ARTIFACT	UNP P00431
C	-1	MET	-	CLONING ARTIFACT	UNP P00431
C	0	ILE	-	CLONING ARTIFACT	UNP P00431

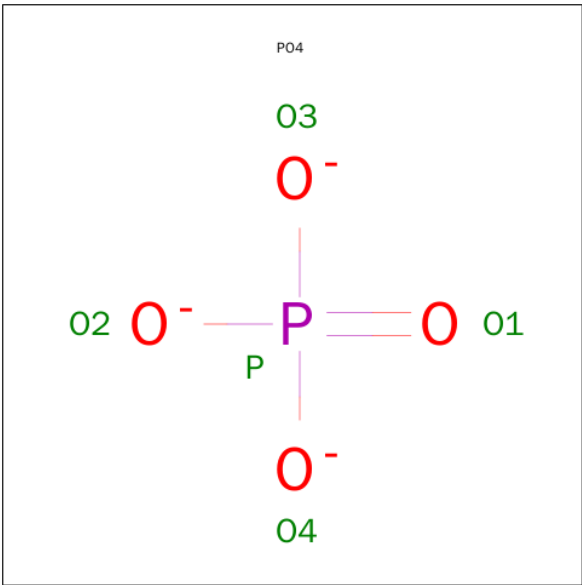
- Molecule 2 is a protein called Cytochrome c iso-1.

Mol	Chain	Residues	Atoms					ZeroOcc	AltConf	Trace
2	B	108	Total	C	N	O	S	0	0	0
			842	531	150	157	4			
2	D	108	Total	C	N	O	S	0	0	0
			847	534	151	158	4			

There are 2 discrepancies between the modelled and reference sequences:

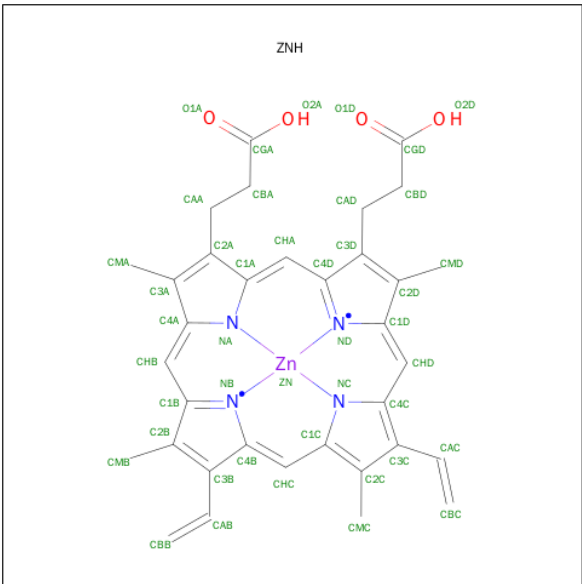
Chain	Residue	Modelled	Actual	Comment	Reference
B	107	SER	CYS	ENGINEERED	UNP P00044
D	107	SER	CYS	ENGINEERED	UNP P00044

- Molecule 3 is PHOSPHATE ION (three-letter code: PO4) (formula: O₄P).



Mol	Chain	Residues	Atoms			ZeroOcc	AltConf
3	C	1	Total	O	P	0	0
			5	4	1		
3	A	1	Total	O	P	0	0
			5	4	1		

- Molecule 4 is PROTOPORPHYRIN IX CONTAINING ZN (three-letter code: ZNH) (formula: C₃₄H₃₂N₄O₄Zn).



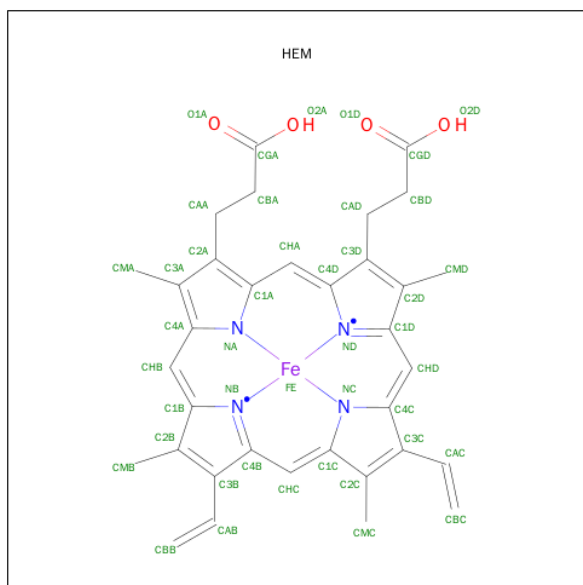
Mol	Chain	Residues	Atoms					ZeroOcc	AltConf
4	A	1	Total	C	N	O	Zn	0	0
			43	34	4	4	1		

Continued on next page...

Continued from previous page...

Mol	Chain	Residues	Atoms					ZeroOcc	AltConf
4	C	1	Total	C	N	O	Zn	0	0
			43	34	4	4	1		

- Molecule 5 is PROTOPORPHYRIN IX CONTAINING FE (three-letter code: HEM) (formula: $C_{34}H_{32}FeN_4O_4$).



Mol	Chain	Residues	Atoms					ZeroOcc	AltConf
5	B	1	Total	C	Fe	N	O	0	0
			43	34	1	4	4		
5	D	1	Total	C	Fe	N	O	0	0
			43	34	1	4	4		

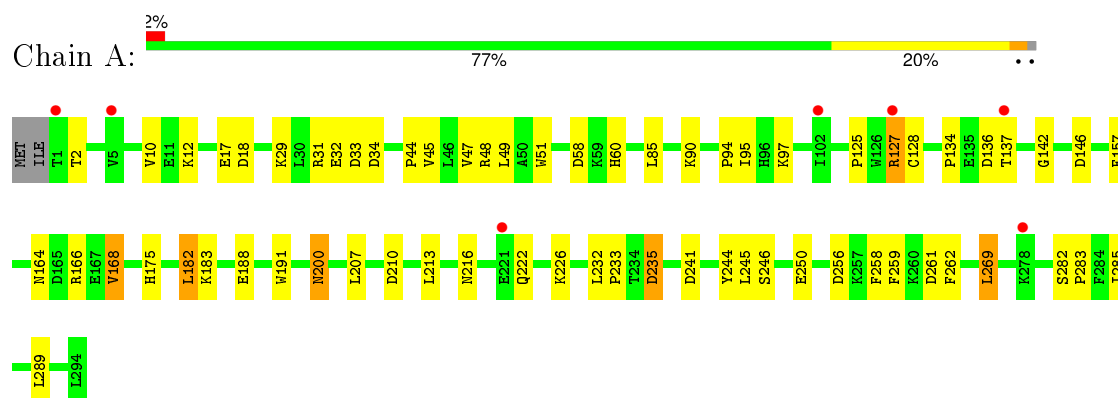
- Molecule 6 is water.

Mol	Chain	Residues	Atoms		ZeroOcc	AltConf
6	A	140	Total	O	0	0
			140	140		
6	B	43	Total	O	0	0
			43	43		
6	C	126	Total	O	0	0
			126	126		
6	D	20	Total	O	0	0
			20	20		

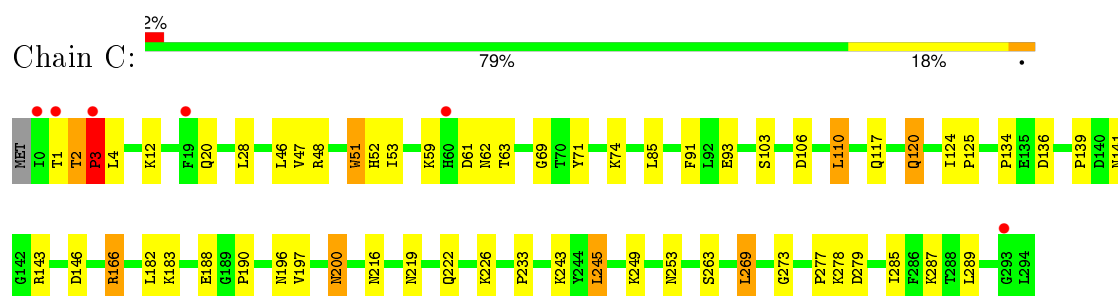
3 Residue-property plots [i](#)

These plots are drawn for all protein, RNA and DNA chains in the entry. The first graphic for a chain summarises the proportions of errors displayed in the second graphic. The second graphic shows the sequence view annotated by issues in geometry and electron density. Residues are color-coded according to the number of geometric quality criteria for which they contain at least one outlier: green = 0, yellow = 1, orange = 2 and red = 3 or more. A red dot above a residue indicates a poor fit to the electron density ($RSRZ > 2$). Stretches of 2 or more consecutive residues without any outlier are shown as a green connector. Residues present in the sample, but not in the model, are shown in grey.

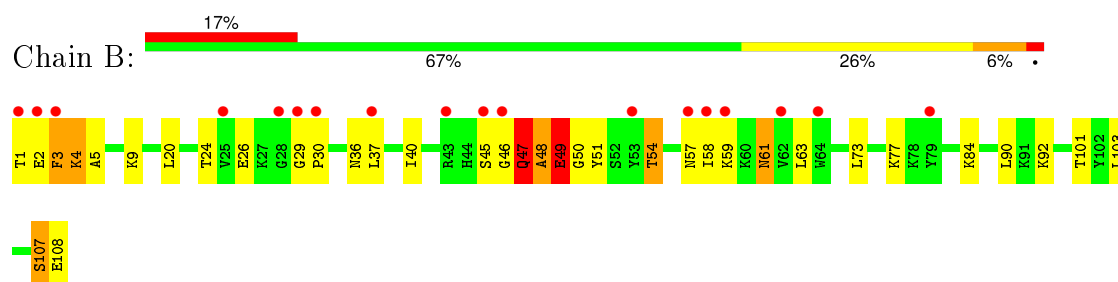
- Molecule 1: cytochrome c peroxidase



- Molecule 1: cytochrome c peroxidase

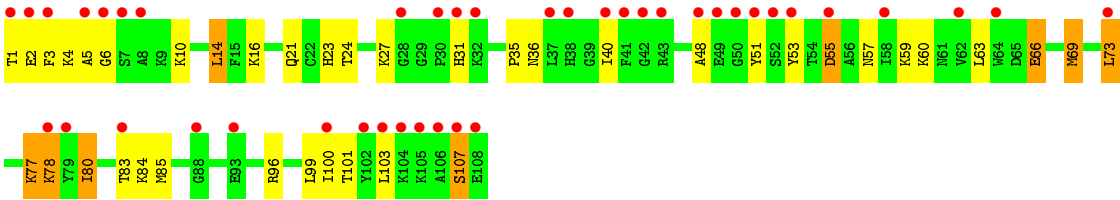


- Molecule 2: Cytochrome c iso-1



- Molecule 2: Cytochrome c iso-1





4 Data and refinement statistics

Property	Value	Source
Space group	P 1 21 1	Depositor
Cell constants a, b, c, α , β , γ	44.81Å 111.62Å 87.52Å 90.00° 104.14° 90.00°	Depositor
Resolution (Å)	20.00 – 2.40 28.26 – 2.00	Depositor EDS
% Data completeness (in resolution range)	100.0 (20.00-2.40) 62.6 (28.26-2.00)	Depositor EDS
R_{merge}	(Not available)	Depositor
R_{sym}	(Not available)	Depositor
$\langle I/\sigma(I) \rangle$ ¹	0.95 (at 2.00Å)	Xtriage
Refinement program	REFMAC 5.1.9999	Depositor
R, R_{free}	0.260 , 0.287 0.255 , 0.283	Depositor DCC
R_{free} test set	1457 reflections (5.25%)	DCC
Wilson B-factor (Å ²)	36.0	Xtriage
Anisotropy	0.771	Xtriage
Bulk solvent k_{sol} (e/Å ³), B_{sol} (Å ²)	0.29 , 40.7	EDS
Estimated twinning fraction	0.104 for h,-k,-h-l	Xtriage
L-test for twinning ²	$\langle L \rangle = 0.46$, $\langle L^2 \rangle = 0.29$	Xtriage
Outliers	2 of 36428 reflections (0.005%)	Xtriage
F_o, F_c correlation	0.92	EDS
Total number of atoms	6950	wwPDB-VP
Average B, all atoms (Å ²)	58.0	wwPDB-VP

Xtriage's analysis on translational NCS is as follows: *The largest off-origin peak in the Patterson function is 5.51% of the height of the origin peak. No significant pseudotranslation is detected.*

¹Intensities estimated from amplitudes.

²Theoretical values of $\langle |L| \rangle$, $\langle L^2 \rangle$ for acentric reflections are 0.5, 0.375 respectively for untwinned datasets, and 0.333, 0.2 for perfectly twinned datasets.

5 Model quality

5.1 Standard geometry

Bond lengths and bond angles in the following residue types are not validated in this section: HEM, PO4, ZNH

The Z score for a bond length (or angle) is the number of standard deviations the observed value is removed from the expected value. A bond length (or angle) with $|Z| > 5$ is considered an outlier worth inspection. RMSZ is the root-mean-square of all Z scores of the bond lengths (or angles).

Mol	Chain	Bond lengths		Bond angles	
		RMSZ	$\# Z > 5$	RMSZ	$\# Z > 5$
1	A	0.78	0/2438	0.89	3/3302 (0.1%)
1	C	0.79	1/2446 (0.0%)	0.89	5/3313 (0.2%)
2	B	1.28	1/860 (0.1%)	1.08	3/1151 (0.3%)
2	D	1.27	1/865 (0.1%)	1.02	1/1156 (0.1%)
All	All	0.94	3/6609 (0.0%)	0.93	12/8922 (0.1%)

Chiral center outliers are detected by calculating the chiral volume of a chiral center and verifying if the center is modelled as a planar moiety or with the opposite hand. A planarity outlier is detected by checking planarity of atoms in a peptide group, atoms in a mainchain group or atoms of a sidechain that are expected to be planar.

Mol	Chain	#Chirality outliers	#Planarity outliers
1	A	0	1
2	D	0	1
All	All	0	2

All (3) bond length outliers are listed below:

Mol	Chain	Res	Type	Atoms	Z	Observed(Å)	Ideal(Å)
2	D	107	SER	CB-OG	30.29	1.81	1.42
2	B	107	SER	CB-OG	29.74	1.80	1.42
1	C	2	THR	C-N	7.07	1.47	1.34

All (12) bond angle outliers are listed below:

Mol	Chain	Res	Type	Atoms	Z	Observed(°)	Ideal(°)
1	A	245	LEU	CA-CB-CG	7.97	133.64	115.30
1	C	4	LEU	CA-CB-CG	7.54	132.65	115.30
1	C	245	LEU	CA-CB-CG	7.25	131.97	115.30
1	C	166	ARG	NE-CZ-NH1	6.79	123.69	120.30

Continued on next page...

Continued from previous page...

Mol	Chain	Res	Type	Atoms	Z	Observed(°)	Ideal(°)
1	C	166	ARG	NE-CZ-NH2	-5.97	117.31	120.30
1	C	269	LEU	CA-CB-CG	5.97	129.03	115.30
2	B	49	GLU	N-CA-C	-5.83	95.26	111.00
1	A	269	LEU	CA-CB-CG	5.75	128.53	115.30
2	D	69	MET	CB-CG-SD	5.55	129.06	112.40
2	B	47	GLN	CA-C-N	-5.38	105.35	117.20
1	A	235	ASP	CB-CG-OD1	5.28	123.06	118.30
2	B	26	GLU	N-CA-CB	-5.17	101.29	110.60

There are no chirality outliers.

All (2) planarity outliers are listed below:

Mol	Chain	Res	Type	Group
1	A	157	PHE	Sidechain
2	D	78	LYS	Mainchain

5.2 Too-close contacts

In the following table, the Non-H and H(model) columns list the number of non-hydrogen atoms and hydrogen atoms in the chain respectively. The H(added) column lists the number of hydrogen atoms added and optimized by MolProbity. The Clashes column lists the number of clashes within the asymmetric unit, whereas Symm-Clashes lists symmetry related clashes.

Mol	Chain	Non-H	H(model)	H(added)	Clashes	Symm-Clashes
1	A	2371	0	2252	40	0
1	C	2379	0	2263	49	0
2	B	842	0	835	22	0
2	D	847	0	849	17	0
3	A	5	0	0	2	0
3	C	5	0	0	10	0
4	A	43	0	30	1	0
4	C	43	0	30	1	0
5	B	43	0	30	4	0
5	D	43	0	30	1	0
6	A	140	0	0	20	0
6	B	43	0	0	1	0
6	C	126	0	0	12	0
6	D	20	0	0	1	0
All	All	6950	0	6319	125	0

The all-atom clashscore is defined as the number of clashes found per 1000 atoms (including

hydrogen atoms). The all-atom clashscore for this structure is 10.

All (125) close contacts within the same asymmetric unit are listed below, sorted by their clash magnitude.

Atom-1	Atom-2	Interatomic distance (Å)	Clash overlap (Å)
2:B:107:SER:OG	2:B:107:SER:CB	1.80	1.28
2:D:107:SER:CB	2:D:107:SER:OG	1.81	1.27
1:A:48:ARG:NH1	6:A:1725:HOH:O	1.72	1.22
1:C:71:TYR:HB2	6:C:1705:HOH:O	1.51	1.09
1:A:34:ASP:HB2	6:A:1723:HOH:O	1.59	1.02
1:A:200:ASN:HD22	1:A:200:ASN:H	1.16	0.93
1:C:277:PRO:O	6:C:1720:HOH:O	1.86	0.93
1:C:51:TRP:CD1	3:C:2201:PO4:O4	2.22	0.92
1:C:71:TYR:CB	6:C:1705:HOH:O	2.11	0.88
1:A:142:GLY:HA2	6:A:1553:HOH:O	1.75	0.86
1:A:175:HIS:HE1	6:A:1694:HOH:O	1.60	0.84
1:A:29:LYS:HE3	6:A:1726:HOH:O	1.77	0.84
1:C:20:GLN:HE22	1:C:287:LYS:H	1.19	0.83
1:C:52:HIS:CD2	3:C:2201:PO4:O4	2.37	0.78
1:C:139:PRO:O	6:C:1717:HOH:O	2.00	0.78
1:C:69:GLY:HA2	6:C:1704:HOH:O	1.82	0.78
1:C:3:PRO:HA	6:C:1702:HOH:O	1.83	0.78
2:D:96:ARG:HB2	2:D:96:ARG:HH21	1.47	0.77
2:B:59:LYS:NZ	1:C:249:LYS:HB3	2.00	0.76
2:B:54:THR:CG2	5:B:1101:HEM:O2D	2.34	0.76
1:C:63:THR:HG23	1:C:143:ARG:HH12	1.52	0.75
1:A:262:PHE:N	6:A:1565:HOH:O	2.12	0.74
5:D:1301:HEM:O1A	6:D:1712:HOH:O	2.05	0.74
1:C:51:TRP:HE1	3:C:2201:PO4:P	2.12	0.73
1:A:256:ASP:OD1	6:A:1697:HOH:O	2.06	0.72
3:A:2202:PO4:O2	6:A:1724:HOH:O	2.06	0.72
1:A:200:ASN:HD22	1:A:200:ASN:N	1.89	0.71
2:B:1:THR:OG1	2:B:3:PHE:HD1	1.74	0.70
2:B:59:LYS:HZ3	1:C:249:LYS:HB3	1.57	0.70
1:C:52:HIS:NE2	3:C:2201:PO4:O4	2.25	0.69
1:C:52:HIS:NE2	3:C:2201:PO4:P	2.66	0.69
1:A:200:ASN:ND2	1:A:200:ASN:H	1.90	0.68
1:C:117:GLN:HE21	1:C:124:ILE:H	1.42	0.68
2:D:24:THR:HG23	2:D:36:ASN:HD22	1.59	0.68
1:C:200:ASN:HD22	1:C:200:ASN:H	1.43	0.64
1:A:142:GLY:CA	6:A:1553:HOH:O	2.39	0.62
2:B:1:THR:HG1	2:B:3:PHE:HD1	1.47	0.62
1:C:51:TRP:NE1	3:C:2201:PO4:O4	2.32	0.62

Continued on next page...

Continued from previous page...

Atom-1	Atom-2	Interatomic distance (Å)	Clash overlap (Å)
1:C:103:SER:HB2	6:C:1706:HOH:O	1.98	0.62
2:D:80:ILE:HD12	2:D:83:THR:HB	1.82	0.61
1:C:51:TRP:HD1	3:C:2201:PO4:O4	1.81	0.61
1:C:188:GLU:H	1:C:222:GLN:HE22	1.49	0.60
1:A:235:ASP:OD1	6:A:1694:HOH:O	2.15	0.60
1:C:48:ARG:NE	3:C:2201:PO4:O3	2.30	0.59
2:D:96:ARG:O	2:D:100:ILE:HG12	2.02	0.59
1:A:188:GLU:H	1:A:222:GLN:HE22	1.49	0.59
1:C:47:VAL:HG22	4:C:1201:ZNH:HMD2	1.83	0.59
1:A:175:HIS:CE1	6:A:1694:HOH:O	2.43	0.58
1:A:47:VAL:HG22	4:A:1001:ZNH:HMD2	1.87	0.57
1:A:48:ARG:NE	3:A:2202:PO4:O1	2.38	0.56
1:C:62:ASN:HD21	1:C:273:GLY:HA2	1.70	0.56
1:C:106:ASP:O	1:C:110:LEU:HB2	2.06	0.55
2:B:54:THR:HG22	5:B:1101:HEM:O2D	2.05	0.55
2:B:29:GLY:HA3	2:B:36:ASN:ND2	2.22	0.55
1:A:258:PHE:O	6:A:1565:HOH:O	2.18	0.54
2:D:24:THR:HG23	2:D:36:ASN:ND2	2.22	0.54
1:C:277:PRO:C	6:C:1720:HOH:O	2.40	0.53
1:A:259:PHE:C	6:A:1565:HOH:O	2.47	0.53
1:A:216:ASN:N	6:A:1445:HOH:O	2.42	0.53
1:A:134:PRO:O	1:A:137:THR:HG22	2.08	0.52
1:C:63:THR:CG2	1:C:143:ARG:HH22	2.23	0.52
1:A:29:LYS:CE	6:A:1726:HOH:O	2.44	0.52
1:A:58:ASP:OD1	1:A:60:HIS:HD2	1.93	0.52
2:D:60:LYS:HG3	2:D:80:ILE:HG12	1.92	0.51
1:C:71:TYR:N	6:C:1705:HOH:O	2.44	0.51
1:C:278:LYS:HA	6:C:1720:HOH:O	2.10	0.51
2:D:31:HIS:CD2	2:D:51:TYR:HB2	2.46	0.50
1:A:166:ARG:HH22	1:A:250:GLU:CD	2.15	0.50
1:C:48:ARG:HD3	1:C:85:LEU:HD21	1.94	0.49
1:A:125:PRO:HG3	1:A:285:ILE:HD11	1.94	0.49
2:B:48:ALA:HB1	2:B:50:GLY:H	1.77	0.49
1:A:94:PRO:HB2	6:A:1726:HOH:O	2.12	0.49
1:C:125:PRO:HG3	1:C:285:ILE:HD11	1.95	0.49
1:A:146:ASP:HB2	6:A:1728:HOH:O	2.13	0.48
2:B:1:THR:OG1	2:B:3:PHE:CD1	2.61	0.48
1:A:232:LEU:HD12	6:A:1694:HOH:O	2.13	0.47
1:C:61:ASP:OD1	1:C:63:THR:HG22	2.13	0.47
1:C:141:ASN:ND2	6:C:1717:HOH:O	2.42	0.47
1:C:120:GLN:HG2	2:D:77:LYS:HZ3	1.80	0.47

Continued on next page...

Continued from previous page...

Atom-1	Atom-2	Interatomic distance (Å)	Clash overlap (Å)
2:D:14:LEU:HB3	2:D:99:LEU:HD23	1.95	0.47
2:B:45:SER:C	2:B:47:GLN:H	2.18	0.46
1:C:216:ASN:HD22	1:C:222:GLN:HE21	1.63	0.46
2:B:92:LYS:HE2	6:B:1722:HOH:O	2.15	0.46
1:C:63:THR:HG23	1:C:143:ARG:NH1	2.27	0.46
2:B:54:THR:HG22	5:B:1101:HEM:CGD	2.46	0.46
2:B:59:LYS:HZ1	1:C:249:LYS:HB3	1.78	0.46
1:C:190:PRO:HB2	6:C:1709:HOH:O	2.16	0.45
1:C:51:TRP:NE1	3:C:2201:PO4:P	2.84	0.45
2:D:55:ASP:O	2:D:59:LYS:HG3	2.17	0.45
1:C:216:ASN:HD22	1:C:222:GLN:NE2	2.14	0.45
2:D:69:MET:O	2:D:73:LEU:HD22	2.16	0.45
1:C:51:TRP:CD1	1:C:52:HIS:HD2	2.35	0.45
2:D:48:ALA:HB3	2:D:53:TYR:OH	2.17	0.44
2:D:31:HIS:HD2	2:D:35:PRO:HA	1.83	0.44
1:A:17:GLU:H	1:A:17:GLU:CD	2.20	0.44
2:D:6:GLY:O	2:D:101:THR:HG21	2.18	0.44
1:C:200:ASN:N	1:C:200:ASN:HD22	2.09	0.44
1:A:182:LEU:HB2	1:A:188:GLU:HB2	2.00	0.43
2:B:37:LEU:HD23	2:B:40:ILE:HD13	2.00	0.43
1:A:127:ARG:HH11	1:A:127:ARG:HD3	1.68	0.43
1:C:200:ASN:ND2	1:C:200:ASN:H	2.14	0.43
1:A:127:ARG:NH2	1:A:283:PRO:HD3	2.34	0.43
1:C:63:THR:HG23	1:C:143:ARG:HH22	1.83	0.43
2:D:23:HIS:HE1	2:D:35:PRO:HD2	1.84	0.42
2:D:31:HIS:CD2	2:D:35:PRO:HA	2.54	0.42
1:C:48:ARG:HE	3:C:2201:PO4:P	2.39	0.42
2:B:73:LEU:HB3	2:B:90:LEU:HD13	2.02	0.42
1:A:10:VAL:HG13	1:A:128:CYS:SG	2.60	0.42
1:C:46:LEU:HD11	1:C:91:PHE:CE1	2.55	0.42
1:A:31:ARG:HB3	1:A:31:ARG:HE	1.52	0.42
1:A:241:ASP:HB3	1:A:244:TYR:HB2	2.02	0.41
1:A:164:ASN:O	1:A:168:VAL:HG13	2.20	0.41
1:A:48:ARG:HD3	1:A:85:LEU:HD21	2.02	0.41
1:A:191:TRP:NE1	1:A:235:ASP:OD2	2.47	0.41
2:B:54:THR:HG23	5:B:1101:HEM:O2D	2.19	0.41
2:B:3:PHE:CD1	2:B:3:PHE:O	2.74	0.41
1:C:63:THR:HG21	1:C:143:ARG:HH22	1.86	0.41
2:B:24:THR:HG21	2:B:30:PRO:HG2	2.03	0.41
2:B:46:GLY:HA3	2:B:58:ILE:HA	2.03	0.41
2:B:59:LYS:HD3	1:C:253:ASN:ND2	2.34	0.40

Continued on next page...

Continued from previous page...

Atom-1	Atom-2	Interatomic distance (Å)	Clash overlap (Å)
1:A:261:ASP:N	6:A:1565:HOH:O	2.53	0.40
1:A:45:VAL:HG23	6:A:1438:HOH:O	2.21	0.40
2:B:45:SER:C	2:B:47:GLN:N	2.74	0.40
1:C:74:LYS:HA	1:C:74:LYS:HD3	1.79	0.40
1:A:31:ARG:HD3	1:A:289:LEU:HD12	2.04	0.40

There are no symmetry-related clashes.

5.3 Torsion angles [i](#)

5.3.1 Protein backbone [i](#)

In the following table, the Percentiles column shows the percent Ramachandran outliers of the chain as a percentile score with respect to all X-ray entries followed by that with respect to entries of similar resolution.

The Analysed column shows the number of residues for which the backbone conformation was analysed, and the total number of residues.

Mol	Chain	Analysed	Favoured	Allowed	Outliers	Percentiles	
1	A	292/296 (99%)	283 (97%)	9 (3%)	0	100	100
1	C	293/296 (99%)	286 (98%)	4 (1%)	3 (1%)	19	28
2	B	106/108 (98%)	95 (90%)	5 (5%)	6 (6%)	2	1
2	D	106/108 (98%)	99 (93%)	4 (4%)	3 (3%)	6	5
All	All	797/808 (99%)	763 (96%)	22 (3%)	12 (2%)	13	17

All (12) Ramachandran outliers are listed below:

Mol	Chain	Res	Type
2	B	48	ALA
2	B	49	GLU
2	B	4	LYS
1	C	1	THR
2	D	5	ALA
2	B	5	ALA
2	B	51	TYR
2	D	4	LYS
2	D	66	GLU
2	B	61	ASN

Continued on next page...

Continued from previous page...

Mol	Chain	Res	Type
1	C	12	LYS
1	C	3	PRO

5.3.2 Protein sidechains ⓘ

In the following table, the Percentiles column shows the percent sidechain outliers of the chain as a percentile score with respect to all X-ray entries followed by that with respect to entries of similar resolution.

The Analysed column shows the number of residues for which the sidechain conformation was analysed, and the total number of residues.

Mol	Chain	Analysed	Rotameric	Outliers	Percentiles	
1	A	252/254 (99%)	227 (90%)	25 (10%)	10	14
1	C	253/254 (100%)	226 (89%)	27 (11%)	8	11
2	B	87/89 (98%)	71 (82%)	16 (18%)	2	2
2	D	89/89 (100%)	69 (78%)	20 (22%)	1	1
All	All	681/686 (99%)	593 (87%)	88 (13%)	5	6

All (88) residues with a non-rotameric sidechain are listed below:

Mol	Chain	Res	Type
1	A	2	THR
1	A	12	LYS
1	A	18	ASP
1	A	32	GLU
1	A	33	ASP
1	A	44	PRO
1	A	49	LEU
1	A	51	TRP
1	A	90	LYS
1	A	95	ILE
1	A	97	LYS
1	A	127	ARG
1	A	136	ASP
1	A	168	VAL
1	A	182	LEU
1	A	183	LYS
1	A	200	ASN
1	A	207	LEU
1	A	210	ASP

Continued on next page...

Continued from previous page...

Mol	Chain	Res	Type
1	A	213	LEU
1	A	226	LYS
1	A	233	PRO
1	A	246	SER
1	A	269	LEU
1	A	282	SER
2	B	2	GLU
2	B	3	PHE
2	B	4	LYS
2	B	9	LYS
2	B	20	LEU
2	B	47	GLN
2	B	49	GLU
2	B	54	THR
2	B	57	ASN
2	B	61	ASN
2	B	63	LEU
2	B	77	LYS
2	B	84	LYS
2	B	101	THR
2	B	103	LEU
2	B	108	GLU
1	C	2	THR
1	C	3	PRO
1	C	28	LEU
1	C	51	TRP
1	C	53	ILE
1	C	59	LYS
1	C	93	GLU
1	C	110	LEU
1	C	120	GLN
1	C	134	PRO
1	C	136	ASP
1	C	146	ASP
1	C	166	ARG
1	C	182	LEU
1	C	183	LYS
1	C	196	ASN
1	C	197	VAL
1	C	200	ASN
1	C	219	ASN
1	C	226	LYS

Continued on next page...

Continued from previous page...

Mol	Chain	Res	Type
1	C	233	PRO
1	C	243	LYS
1	C	245	LEU
1	C	263	SER
1	C	269	LEU
1	C	279	ASP
1	C	289	LEU
2	D	1	THR
2	D	2	GLU
2	D	3	PHE
2	D	10	LYS
2	D	14	LEU
2	D	16	LYS
2	D	21	GLN
2	D	27	LYS
2	D	40	ILE
2	D	55	ASP
2	D	57	ASN
2	D	63	LEU
2	D	66	GLU
2	D	73	LEU
2	D	77	LYS
2	D	78	LYS
2	D	80	ILE
2	D	84	LYS
2	D	85	MET
2	D	103	LEU

Some sidechains can be flipped to improve hydrogen bonding and reduce clashes. All (26) such sidechains are listed below:

Mol	Chain	Res	Type
1	A	24	ASN
1	A	38	ASN
1	A	60	HIS
1	A	62	ASN
1	A	87	ASN
1	A	117	GLN
1	A	141	ASN
1	A	200	ASN
1	A	222	GLN
1	A	255	GLN
1	A	292	GLN

Continued on next page...

Continued from previous page...

Mol	Chain	Res	Type
2	B	21	GLN
1	C	20	GLN
1	C	60	HIS
1	C	62	ASN
1	C	117	GLN
1	C	120	GLN
1	C	196	ASN
1	C	200	ASN
1	C	205	ASN
1	C	208	ASN
1	C	222	GLN
1	C	255	GLN
1	C	292	GLN
2	D	31	HIS
2	D	36	ASN

5.3.3 RNA ⓘ

There are no RNA molecules in this entry.

5.4 Non-standard residues in protein, DNA, RNA chains ⓘ

There are no non-standard protein/DNA/RNA residues in this entry.

5.5 Carbohydrates ⓘ

There are no carbohydrates in this entry.

5.6 Ligand geometry ⓘ

6 ligands are modelled in this entry.

In the following table, the Counts columns list the number of bonds (or angles) for which Mogul statistics could be retrieved, the number of bonds (or angles) that are observed in the model and the number of bonds (or angles) that are defined in the chemical component dictionary. The Link column lists molecule types, if any, to which the group is linked. The Z score for a bond length (or angle) is the number of standard deviations the observed value is removed from the expected value. A bond length (or angle) with $|Z| > 2$ is considered an outlier worth inspection. RMSZ is the root-mean-square of all Z scores of the bond lengths (or angles).

Mol	Type	Chain	Res	Link	Bond lengths			Bond angles		
					Counts	RMSZ	# Z > 2	Counts	RMSZ	# Z > 2
4	ZNH	A	1001	1,3	28,50,50	1.17	4 (14%)	17,82,82	2.50	6 (35%)
3	PO4	A	2202	4	4,4,4	2.18	1 (25%)	6,6,6	0.31	0
5	HEM	B	1101	2	30,50,50	2.35	9 (30%)	24,82,82	2.89	12 (50%)
4	ZNH	C	1201	1,3	28,50,50	1.19	1 (3%)	17,82,82	1.91	7 (41%)
3	PO4	C	2201	4	4,4,4	2.17	1 (25%)	6,6,6	0.30	0
5	HEM	D	1301	2	30,50,50	2.49	10 (33%)	24,82,82	2.91	11 (45%)

In the following table, the Chirals column lists the number of chiral outliers, the number of chiral centers analysed, the number of these observed in the model and the number defined in the chemical component dictionary. Similar counts are reported in the Torsion and Rings columns. '-' means no outliers of that kind were identified.

Mol	Type	Chain	Res	Link	Chirals	Torsions	Rings
4	ZNH	A	1001	1,3	-	0/6/54/54	0/0/8/8
3	PO4	A	2202	4	-	0/0/0/0	0/0/0/0
5	HEM	B	1101	2	-	0/10/54/54	0/0/8/8
4	ZNH	C	1201	1,3	-	0/6/54/54	0/0/8/8
3	PO4	C	2201	4	-	0/0/0/0	0/0/0/0
5	HEM	D	1301	2	-	0/10/54/54	0/0/8/8

All (26) bond length outliers are listed below:

Mol	Chain	Res	Type	Atoms	Z	Observed(Å)	Ideal(Å)
5	B	1101	HEM	C2D-C3D	-6.06	1.36	1.54
5	D	1301	HEM	C3C-CAC	-5.73	1.40	1.51
5	B	1101	HEM	C3D-C4D	-5.40	1.44	1.51
5	D	1301	HEM	C2D-C3D	-5.37	1.38	1.54
5	D	1301	HEM	C2C-C1C	-4.97	1.43	1.52
5	D	1301	HEM	C3B-CAB	-4.71	1.42	1.51
5	B	1101	HEM	C3C-CAC	-4.57	1.42	1.51
5	D	1301	HEM	C3D-C4D	-4.41	1.45	1.51
5	B	1101	HEM	C3B-CAB	-4.31	1.43	1.51
5	D	1301	HEM	C3B-C4B	-3.78	1.48	1.51
5	B	1101	HEM	C2D-C1D	-3.35	1.40	1.51
5	D	1301	HEM	C2B-C1B	-2.63	1.43	1.51
4	C	1201	ZNH	C3C-CAC	-2.56	1.42	1.47
5	B	1101	HEM	C3B-C4B	-2.47	1.49	1.51
5	B	1101	HEM	C2C-C1C	-2.44	1.48	1.52
4	A	1001	ZNH	C3B-CAB	-2.37	1.42	1.47
5	B	1101	HEM	C2B-C1B	-2.34	1.44	1.51
4	A	1001	ZNH	C3C-CAC	-2.19	1.42	1.47

Continued on next page...

Continued from previous page...

Mol	Chain	Res	Type	Atoms	Z	Observed(Å)	Ideal(Å)
4	A	1001	ZNH	C1B-NB	-2.00	1.34	1.37
5	D	1301	HEM	FE-NC	2.03	2.03	1.95
4	A	1001	ZNH	CMC-C2C	2.13	1.56	1.51
5	D	1301	HEM	CHC-C1C	2.31	1.41	1.36
5	D	1301	HEM	FE-ND	2.38	2.10	1.97
5	B	1101	HEM	FE-NC	2.41	2.05	1.95
3	C	2201	PO4	P-O2	4.07	1.68	1.53
3	A	2202	PO4	P-O2	4.08	1.68	1.53

All (36) bond angle outliers are listed below:

Mol	Chain	Res	Type	Atoms	Z	Observed(°)	Ideal(°)
4	A	1001	ZNH	CAA-C2A-C1A	-3.42	123.29	127.01
4	C	1201	ZNH	CMC-C2C-C1C	-3.06	123.30	128.36
4	C	1201	ZNH	CAD-C3D-C4D	-2.81	123.96	127.01
4	A	1001	ZNH	CMC-C2C-C1C	-2.46	124.30	128.36
5	B	1101	HEM	CBD-CAD-C3D	-2.30	106.86	113.55
4	C	1201	ZNH	CMB-C2B-C3B	2.07	129.14	125.09
5	D	1301	HEM	C2C-C1C-CHC	2.10	126.87	123.68
5	B	1101	HEM	C1D-CHD-C4C	2.23	129.54	125.82
5	B	1101	HEM	C4B-CHC-C1C	2.26	129.59	125.82
5	B	1101	HEM	CAA-C2A-C1A	2.42	129.63	127.01
4	C	1201	ZNH	C3C-CAC-CBC	2.42	131.27	126.32
4	C	1201	ZNH	C3B-CAB-CBB	2.44	131.32	126.32
4	A	1001	ZNH	CMC-C2C-C3C	2.48	129.94	125.09
5	D	1301	HEM	C3C-CAC-CBC	2.92	128.93	124.46
5	D	1301	HEM	C4B-CHC-C1C	3.04	130.90	125.82
5	B	1101	HEM	C3B-C4B-CHC	3.13	127.57	123.16
4	C	1201	ZNH	CMC-C2C-C3C	3.29	131.51	125.09
5	D	1301	HEM	CMD-C2D-C3D	3.38	129.31	114.35
4	C	1201	ZNH	CBA-CAA-C2A	3.40	118.62	112.53
5	D	1301	HEM	C2D-C3D-C4D	3.75	107.86	101.50
5	D	1301	HEM	C3B-C4B-CHC	3.81	128.52	123.16
5	B	1101	HEM	CMD-C2D-C3D	3.88	131.51	114.35
5	D	1301	HEM	CAD-C3D-C4D	3.90	126.21	112.47
4	A	1001	ZNH	CBA-CAA-C2A	4.17	120.01	112.53
5	D	1301	HEM	CAD-C3D-C2D	4.41	125.89	113.22
5	B	1101	HEM	C3C-CAC-CBC	4.43	131.25	124.46
5	B	1101	HEM	C3B-CAB-CBB	4.55	131.44	124.46
5	D	1301	HEM	C3B-CAB-CBB	4.60	131.50	124.46
5	B	1101	HEM	CAD-C3D-C4D	4.71	129.09	112.47
5	B	1101	HEM	CMC-C2C-C3C	4.93	128.83	116.53

Continued on next page...

Continued from previous page...

Mol	Chain	Res	Type	Atoms	Z	Observed($^{\circ}$)	Ideal($^{\circ}$)
5	B	1101	HEM	CAD-C3D-C2D	5.10	127.89	113.22
4	A	1001	ZNH	C3B-CAB-CBB	5.17	136.91	126.32
4	A	1001	ZNH	CMB-C2B-C3B	5.28	135.42	125.09
5	D	1301	HEM	CMC-C2C-C3C	5.65	130.64	116.53
5	B	1101	HEM	CMB-C2B-C3B	5.89	131.24	116.53
5	D	1301	HEM	CMB-C2B-C3B	6.02	131.55	116.53

There are no chirality outliers.

There are no torsion outliers.

There are no ring outliers.

6 monomers are involved in 19 short contacts:

Mol	Chain	Res	Type	Clashes	Symm-Clashes
4	A	1001	ZNH	1	0
3	A	2202	PO4	2	0
5	B	1101	HEM	4	0
4	C	1201	ZNH	1	0
3	C	2201	PO4	10	0
5	D	1301	HEM	1	0

5.7 Other polymers [i](#)

There are no such residues in this entry.

5.8 Polymer linkage issues [i](#)

There are no chain breaks in this entry.

6 Fit of model and data ⓘ

6.1 Protein, DNA and RNA chains ⓘ

In the following table, the column labelled ‘#RSRZ> 2’ contains the number (and percentage) of RSRZ outliers, followed by percent RSRZ outliers for the chain as percentile scores relative to all X-ray entries and entries of similar resolution. The OWAB column contains the minimum, median, 95th percentile and maximum values of the occupancy-weighted average B-factor per residue. The column labelled ‘Q< 0.9’ lists the number of (and percentage) of residues with an average occupancy less than 0.9.

Mol	Chain	Analysed	<RSRZ>	#RSRZ>2	OWAB(Å ²)	Q<0.9
1	A	294/296 (99%)	0.03	7 (2%) 62 61	44, 57, 70, 83	0
1	C	295/296 (99%)	0.01	6 (2%) 68 68	40, 57, 72, 84	0
2	B	108/108 (100%)	0.86	18 (16%) 2 2	48, 57, 70, 86	0
2	D	108/108 (100%)	2.25	41 (37%) 0 0	46, 58, 70, 82	0
All	All	805/808 (99%)	0.43	72 (8%) 12 12	40, 57, 71, 86	0

All (72) RSRZ outliers are listed below:

Mol	Chain	Res	Type	RSRZ
2	D	42	GLY	16.9
2	D	1	THR	12.6
2	D	41	PHE	11.2
2	B	2	GLU	7.6
2	D	6	GLY	7.5
2	D	108	GLU	7.3
2	D	2	GLU	7.1
1	C	0	ILE	6.6
2	D	8	ALA	6.3
2	D	103	LEU	6.1
2	D	48	ALA	6.1
2	B	1	THR	5.7
1	A	1	THR	5.5
2	D	104	LYS	5.5
2	D	28	GLY	5.4
2	D	55	ASP	5.3
2	D	107	SER	5.1
2	B	53	TYR	5.1
2	D	52	SER	4.8
2	D	40	ILE	4.7
2	B	59	LYS	4.7

Continued on next page...

Continued from previous page...

Mol	Chain	Res	Type	RSRZ
2	D	100	ILE	4.5
2	B	3	PHE	4.4
2	B	57	ASN	4.4
2	D	62	VAL	4.3
2	D	50	GLY	4.1
2	D	106	ALA	4.1
2	D	88	GLY	3.9
2	B	28	GLY	3.8
2	D	3	PHE	3.8
2	D	31	HIS	3.8
2	B	37	LEU	3.6
2	D	102	TYR	3.4
2	B	62	VAL	3.4
2	D	37	LEU	3.4
1	C	1	THR	3.4
1	A	278	LYS	3.4
2	B	30	PRO	3.1
2	D	38	HIS	3.0
1	C	19	PHE	3.0
2	D	49	GLU	3.0
2	D	64	TRP	2.9
2	D	83	THR	2.8
2	D	78	LYS	2.8
2	B	25	VAL	2.7
2	D	79	TYR	2.7
2	D	7	SER	2.7
2	D	53	TYR	2.7
2	B	43	ARG	2.5
2	B	79	TYR	2.5
1	C	293	GLY	2.5
2	D	73	LEU	2.5
2	D	93	GLU	2.4
1	A	221	GLU	2.4
1	A	127	ARG	2.4
2	D	30	PRO	2.3
2	D	43	ARG	2.3
2	B	46	GLY	2.3
1	A	102	ILE	2.3
1	A	137	THR	2.2
1	A	5	VAL	2.2
2	D	51	TYR	2.1
2	B	45	SER	2.1

Continued on next page...

Continued from previous page...

Mol	Chain	Res	Type	RSRZ
2	D	58	ILE	2.1
1	C	3	PRO	2.1
2	B	29	GLY	2.1
1	C	60	HIS	2.1
2	B	64	TRP	2.1
2	D	105	LYS	2.1
2	B	58	ILE	2.0
2	D	32	LYS	2.0
2	D	5	ALA	2.0

6.2 Non-standard residues in protein, DNA, RNA chains [i](#)

There are no non-standard protein/DNA/RNA residues in this entry.

6.3 Carbohydrates [i](#)

There are no carbohydrates in this entry.

6.4 Ligands [i](#)

In the following table, the Atoms column lists the number of modelled atoms in the group and the number defined in the chemical component dictionary. LLDF column lists the quality of electron density of the group with respect to its neighbouring residues in protein, DNA or RNA chains. The B-factors column lists the minimum, median, 95th percentile and maximum values of B factors of atoms in the group. The column labelled 'Q < 0.9' lists the number of atoms with occupancy less than 0.9.

Mol	Type	Chain	Res	Atoms	RSCC	RSR	LLDF	B-factors(Å ²)	Q<0.9
3	PO4	A	2202	5/5	0.74	0.24	3.75	74,75,85,89	0
4	ZNH	A	1001	43/43	0.96	0.14	-0.19	48,55,60,63	0
5	HEM	D	1301	43/43	0.88	0.19	-0.58	37,55,60,71	0
5	HEM	B	1101	43/43	0.95	0.13	-0.80	49,56,59,65	0
4	ZNH	C	1201	43/43	0.96	0.11	-0.90	41,53,61,63	0
3	PO4	C	2201	5/5	0.92	0.20	-	62,75,79,79	0

6.5 Other polymers [i](#)

There are no such residues in this entry.