



# Full wwPDB X-ray Structure Validation Report ⓘ

Feb 19, 2016 – 07:34 PM GMT

PDB ID : 4UC5  
Title : Neisseria Meningitidis DAH7PS-Phenylalanine regulated  
Authors : Heyes, L.C.; Lang, E.J.M.; Parker, E.J.  
Deposited on : 2014-12-03  
Resolution : 2.19 Å(reported)

This is a Full wwPDB X-ray Structure Validation Report for a publicly released PDB entry.  
We welcome your comments at [validation@mail.wwpdb.org](mailto:validation@mail.wwpdb.org)  
A user guide is available at  
<http://wwpdb.org/validation/2016/XrayValidationReportHelp>  
with specific help available everywhere you see the ⓘ symbol.

---

The following versions of software and data (see [references ⓘ](#)) were used in the production of this report:

MolProbity : 4.02b-467  
Mogul : 1.7.1 (RC1), CSD as537be (2016)  
Xtriage (Phenix) : 1.9-1692  
EDS : rb-20026982  
Percentile statistics : 20151230.v01 (using entries in the PDB archive December 30th 2015)  
Refmac : 5.8.0135  
CCP4 : 6.5.0  
Ideal geometry (proteins) : Engh & Huber (2001)  
Ideal geometry (DNA, RNA) : Parkinson et al. (1996)  
Validation Pipeline (wwPDB-VP) : rb-20026982

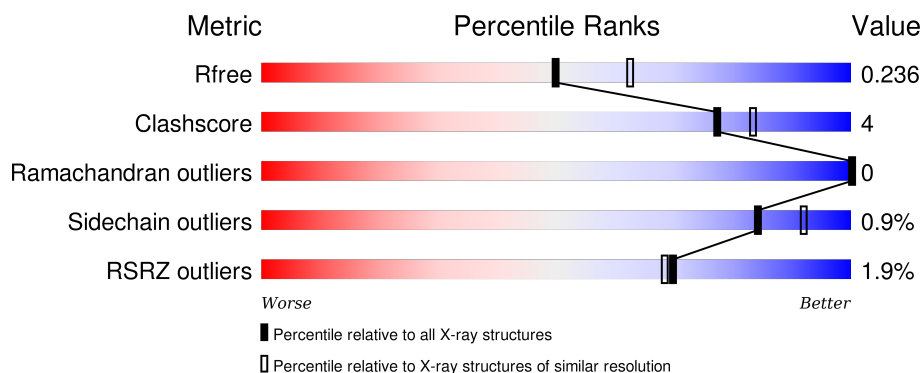
# 1 Overall quality at a glance ⓘ

The following experimental techniques were used to determine the structure:

## *X-RAY DIFFRACTION*

The reported resolution of this entry is 2.19 Å.

Percentile scores (ranging between 0-100) for global validation metrics of the entry are shown in the following graphic. The table shows the number of entries on which the scores are based.



Metric	Whole archive (#Entries)	Similar resolution (#Entries, resolution range(Å))
$R_{free}$	91344	3774 (2.20-2.20)
Clashscore	102246	4477 (2.20-2.20)
Ramachandran outliers	100387	4404 (2.20-2.20)
Sidechain outliers	100360	4405 (2.20-2.20)
RSRZ outliers	91569	3781 (2.20-2.20)

The table below summarises the geometric issues observed across the polymeric chains and their fit to the electron density. The red, orange, yellow and green segments on the lower bar indicate the fraction of residues that contain outliers for  $\geq 3$ , 2, 1 and 0 types of geometric quality criteria. A grey segment represents the fraction of residues that are not modelled. The numeric value for each fraction is indicated below the corresponding segment, with a dot representing fractions  $\leq 5\%$ . The upper red bar (where present) indicates the fraction of residues that have poor fit to the electron density. The numeric value is given above the bar.

Mol	Chain	Length	Quality of chain
1	A	351	<div> <div>90%</div> <div>9%</div> <div>.</div> </div>
1	B	351	<div> <div>87%</div> <div>10%</div> <div>..</div> </div>
1	C	351	<div> <div>92%</div> <div>7%</div> <div>.</div> </div>
1	D	351	<div> <div>93%</div> <div>6%</div> <div>.</div> </div>

The following table lists non-polymeric compounds, carbohydrate monomers and non-standard

residues in protein, DNA, RNA chains that are outliers for geometric or electron-density-fit criteria:

Mol	Type	Chain	Res	Chirality	Geometry	Clashes	Electron density
3	PEG	A	1351	-	-	-	X
4	SO4	A	1352	-	-	X	-
4	SO4	A	1353	-	-	-	X

## 2 Entry composition

There are 6 unique types of molecules in this entry. The entry contains 10874 atoms, of which 0 are hydrogens and 0 are deuteriums.

In the tables below, the ZeroOcc column contains the number of atoms modelled with zero occupancy, the AltConf column contains the number of residues with at least one atom in alternate conformation and the Trace column contains the number of residues modelled with at most 2 atoms.

- Molecule 1 is a protein called PHOSPHO-2-DEHYDRO-3-DEOXYHEPTONATE ALDOLASE.

Mol	Chain	Residues	Atoms					ZeroOcc	AltConf	Trace
1	A	346	Total	C	N	O	S	0	0	0
			2638	1652	474	498	14			
1	B	346	Total	C	N	O	S	0	0	0
			2571	1610	460	487	14			
1	C	347	Total	C	N	O	S	0	0	0
			2634	1649	473	498	14			
1	D	347	Total	C	N	O	S	0	0	0
			2622	1643	470	495	14			

- Molecule 2 is MANGANESE (II) ION (three-letter code: MN) (formula: Mn).

Mol	Chain	Residues	Atoms		ZeroOcc	AltConf
2	B	1	Total	Mn	0	0
			1	1		
2	A	1	Total	Mn	0	0
			1	1		
2	D	1	Total	Mn	0	0
			1	1		
2	C	1	Total	Mn	0	0
			1	1		

- Molecule 3 is DI(HYDROXYETHYL)ETHER (three-letter code: PEG) (formula: C<sub>4</sub>H<sub>10</sub>O<sub>3</sub>).



Mol	Chain	Residues	Atoms			ZeroOcc	AltConf
3	A	1	Total	C	O	0	0
			7	4	3		

- Molecule 4 is SULFATE ION (three-letter code: SO4) (formula: O<sub>4</sub>S).



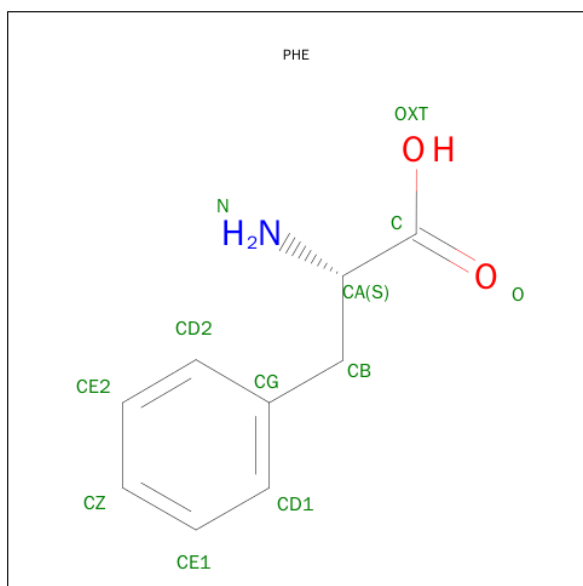
Mol	Chain	Residues	Atoms			ZeroOcc	AltConf
4	A	1	Total	O	S	0	0
			5	4	1		
4	A	1	Total	O	S	0	0
			5	4	1		
4	B	1	Total	O	S	0	0
			5	4	1		

*Continued on next page...*

Continued from previous page...

Mol	Chain	Residues	Atoms			ZeroOcc	AltConf
4	D	1	Total	O	S	0	0
			5	4	1		

- Molecule 5 is PHENYLALANINE (three-letter code: PHE) (formula:  $C_9H_{11}NO_2$ ).



Mol	Chain	Residues	Atoms				ZeroOcc	AltConf
5	A	1	Total	C	N	O	0	0
			12	9	1	2		
5	B	1	Total	C	N	O	0	0
			12	9	1	2		
5	C	1	Total	C	N	O	0	0
			12	9	1	2		
5	D	1	Total	C	N	O	0	0
			12	9	1	2		

- Molecule 6 is water.

Mol	Chain	Residues	Atoms		ZeroOcc	AltConf
6	A	117	Total	O	0	0
			117	117		
6	B	64	Total	O	0	0
			64	64		
6	C	93	Total	O	0	0
			93	93		
6	D	56	Total	O	0	0
			56	56		



## 4 Data and refinement statistics

Property	Value	Source
Space group	P 1 21 1	Depositor
Cell constants a, b, c, $\alpha$ , $\beta$ , $\gamma$	73.61Å 143.46Å 75.18Å 90.00° 96.18° 90.00°	Depositor
Resolution (Å)	74.74 – 2.19 46.95 – 2.19	Depositor EDS
% Data completeness (in resolution range)	99.7 (74.74-2.19) 99.7 (46.95-2.19)	Depositor EDS
$R_{merge}$	0.08	Depositor
$R_{sym}$	(Not available)	Depositor
$\langle I/\sigma(I) \rangle$ <sup>1</sup>	1.41 (at 2.18Å)	Xtriage
Refinement program	REFMAC 5.8.0073	Depositor
R, $R_{free}$	0.189 , 0.236 0.195 , 0.236	Depositor DCC
$R_{free}$ test set	3980 reflections (5.28%)	DCC
Wilson B-factor (Å <sup>2</sup> )	43.4	Xtriage
Anisotropy	0.150	Xtriage
Bulk solvent $k_{sol}$ (e/Å <sup>3</sup> ), $B_{sol}$ (Å <sup>2</sup> )	0.29 , 24.9	EDS
Estimated twinning fraction	0.025 for l,-k,h	Xtriage
L-test for twinning <sup>2</sup>	$\langle  L  \rangle = 0.48$ , $\langle L^2 \rangle = 0.31$	Xtriage
Outliers	2 of 79335 reflections (0.003%)	Xtriage
$F_o, F_c$ correlation	0.96	EDS
Total number of atoms	10874	wwPDB-VP
Average B, all atoms (Å <sup>2</sup> )	48.0	wwPDB-VP

Xtriage's analysis on translational NCS is as follows: *The largest off-origin peak in the Patterson function is 4.08% of the height of the origin peak. No significant pseudotranslation is detected.*

<sup>1</sup>Intensities estimated from amplitudes.

<sup>2</sup>Theoretical values of  $\langle |L| \rangle$ ,  $\langle L^2 \rangle$  for acentric reflections are 0.5, 0.375 respectively for untwinned datasets, and 0.333, 0.2 for perfectly twinned datasets.



## 5 Model quality [i](#)

### 5.1 Standard geometry [i](#)

Bond lengths and bond angles in the following residue types are not validated in this section: PEG, SO4, MN

The Z score for a bond length (or angle) is the number of standard deviations the observed value is removed from the expected value. A bond length (or angle) with  $|Z| > 5$  is considered an outlier worth inspection. RMSZ is the root-mean-square of all Z scores of the bond lengths (or angles).

Mol	Chain	Bond lengths		Bond angles	
		RMSZ	$\# Z  > 5$	RMSZ	$\# Z  > 5$
1	A	0.51	0/2689	0.67	0/3645
1	B	0.49	0/2622	0.62	0/3566
1	C	0.48	0/2685	0.65	0/3642
1	D	0.47	0/2673	0.63	0/3628
All	All	0.49	0/10669	0.64	0/14481

There are no bond length outliers.

There are no bond angle outliers.

There are no chirality outliers.

There are no planarity outliers.

### 5.2 Too-close contacts [i](#)

In the following table, the Non-H and H(model) columns list the number of non-hydrogen atoms and hydrogen atoms in the chain respectively. The H(added) column lists the number of hydrogen atoms added and optimized by MolProbity. The Clashes column lists the number of clashes within the asymmetric unit, whereas Symm-Clashes lists symmetry related clashes.

Mol	Chain	Non-H	H(model)	H(added)	Clashes	Symm-Clashes
1	A	2638	0	2591	21	0
1	B	2571	0	2455	31	0
1	C	2634	0	2574	15	0
1	D	2622	0	2554	18	0
2	A	1	0	0	0	0
2	B	1	0	0	0	0
2	C	1	0	0	0	0
2	D	1	0	0	0	0
3	A	7	0	10	0	0

*Continued on next page...*

*Continued from previous page...*

Mol	Chain	Non-H	H(model)	H(added)	Clashes	Symm-Clashes
4	A	10	0	0	2	0
4	B	5	0	0	1	0
4	D	5	0	0	0	0
5	A	12	0	8	0	0
5	B	12	0	8	0	0
5	C	12	0	8	0	0
5	D	12	0	8	0	0
6	A	117	0	0	0	0
6	B	64	0	0	1	0
6	C	93	0	0	0	0
6	D	56	0	0	1	0
All	All	10874	0	10216	77	0

The all-atom clashscore is defined as the number of clashes found per 1000 atoms (including hydrogen atoms). The all-atom clashscore for this structure is 4.

All (77) close contacts within the same asymmetric unit are listed below, sorted by their clash magnitude.

Atom-1	Atom-2	Interatomic distance (Å)	Clash overlap (Å)
1:B:63:CYS:HA	1:B:94:ARG:HH12	1.52	0.75
1:B:63:CYS:HA	1:B:94:ARG:NH1	2.02	0.74
1:D:62:PRO:O	1:D:94:ARG:HD3	1.88	0.74
1:C:189:ASN:HB2	1:C:194:ASN:O	1.88	0.73
1:B:63:CYS:CA	1:B:94:ARG:HH12	2.03	0.71
1:C:82:ARG:HA	1:C:91:ILE:HD12	1.72	0.71
1:B:189:ASN:ND2	1:B:236:ARG:H	1.89	0.70
1:B:236:ARG:HG2	1:B:236:ARG:O	1.93	0.68
1:B:62:PRO:O	1:B:94:ARG:NH1	2.26	0.68
1:A:54:LYS:O	1:A:346:ARG:NH2	2.29	0.64
1:B:73:GLU:CB	6:B:2060:HOH:O	2.45	0.64
4:A:1352:SO4:O3	1:D:219:HIS:ND1	2.33	0.62
1:B:63:CYS:C	1:B:94:ARG:HH12	2.03	0.61
1:A:181:LEU:O	1:B:11:LYS:HD2	2.04	0.58
1:C:170:GLU:HG2	1:D:167:ARG:HG2	1.88	0.55
1:D:189:ASN:HB2	1:D:194:ASN:O	2.08	0.54
1:A:210:HIS:HB3	1:A:222:ILE:HD11	1.90	0.54
1:B:189:ASN:ND2	1:B:242:ASN:HD21	2.07	0.52
1:D:189:ASN:HD21	1:D:242:ASN:HD21	1.55	0.52
1:C:189:ASN:HD21	1:C:236:ARG:H	1.58	0.52
1:D:189:ASN:ND2	1:D:242:ASN:HD21	2.07	0.52
1:B:30:ILE:HD12	1:B:158:LEU:HD23	1.91	0.52

*Continued on next page...*

*Continued from previous page...*

Atom-1	Atom-2	Interatomic distance (Å)	Clash overlap (Å)
1:C:210:HIS:HA	1:C:223:VAL:O	2.10	0.52
1:A:82:ARG:HA	1:A:91:ILE:HD12	1.91	0.52
1:A:219:HIS:HB2	4:A:1352:SO4:O4	2.10	0.52
1:C:111:ASN:O	1:C:119:PHE:HA	2.13	0.49
1:B:63:CYS:CA	1:B:94:ARG:NH1	2.68	0.49
1:D:189:ASN:ND2	1:D:236:ARG:H	2.11	0.49
1:B:22:ILE:HD13	1:D:19:LEU:HD23	1.95	0.48
1:B:82:ARG:HA	1:B:91:ILE:HD12	1.95	0.48
1:B:17:GLU:OE1	1:D:217:ALA:HB2	2.14	0.48
1:D:101:ARG:NH1	1:D:103:THR:O	2.47	0.48
1:C:151:THR:N	1:C:152:PRO:CD	2.77	0.48
1:A:202:ILE:HD11	1:A:233:VAL:HG13	1.97	0.47
1:B:202:ILE:HD11	1:B:233:VAL:HG13	1.96	0.47
1:B:267:ASP:HA	1:B:302:MET:HB3	1.97	0.46
1:B:189:ASN:HD21	1:B:236:ARG:H	1.60	0.46
1:D:146:PHE:CD1	1:D:152:PRO:HG3	2.50	0.46
1:C:189:ASN:ND2	1:C:236:ARG:H	2.13	0.46
1:C:13:LYS:HE3	1:D:226:GLY:HA2	1.97	0.46
1:C:77:ARG:HB3	1:C:329:TRP:CZ2	2.51	0.46
1:D:194:ASN:OD1	1:D:196:LYS:N	2.49	0.45
1:B:237:GLY:N	1:B:242:ASN:OD1	2.50	0.45
1:C:267:ASP:HA	1:C:302:MET:HB3	1.99	0.44
1:A:213:SER:O	1:A:221:ALA:N	2.48	0.44
1:B:25:LEU:HD23	1:B:129:ARG:CZ	2.48	0.44
1:B:94:ARG:HG2	1:B:96:TYR:CE1	2.53	0.44
1:B:236:ARG:HG3	4:B:1351:SO4:O2	2.18	0.44
1:B:268:CYS:HA	1:B:283:VAL:HG11	2.00	0.43
1:A:116:ASP:OD1	1:A:116:ASP:N	2.50	0.43
1:A:189:ASN:ND2	1:A:236:ARG:H	2.16	0.43
1:C:235:LEU:HB3	1:C:242:ASN:OD1	2.18	0.43
1:B:59:ILE:HG22	1:B:94:ARG:HG3	2.01	0.43
1:A:267:ASP:HA	1:A:302:MET:HB3	2.00	0.43
1:A:212:LEU:HD23	1:A:212:LEU:N	2.33	0.43
1:A:151:THR:N	1:A:152:PRO:CD	2.82	0.43
1:B:22:ILE:HG12	1:B:217:ALA:HA	2.01	0.43
1:A:114:HIS:HB2	1:A:116:ASP:OD1	2.19	0.43
1:B:210:HIS:HA	1:B:223:VAL:O	2.19	0.42
1:D:166:ALA:HB2	1:D:236:ARG:HD3	2.01	0.42
1:A:222:ILE:HG23	1:B:16:LYS:HG3	2.01	0.42
1:B:151:THR:N	1:B:152:PRO:CD	2.82	0.42
1:A:189:ASN:HD21	1:A:236:ARG:H	1.67	0.42

*Continued on next page...*

Continued from previous page...

Atom-1	Atom-2	Interatomic distance (Å)	Clash overlap (Å)
1:A:222:ILE:HB	1:B:18:LEU:HD21	2.02	0.42
1:B:110:ILE:O	1:B:124:GLY:HA3	2.21	0.41
1:A:111:ASN:O	1:A:119:PHE:HA	2.21	0.41
1:C:59:ILE:HG22	1:C:94:ARG:HG3	2.03	0.41
1:A:210:HIS:HA	1:A:223:VAL:O	2.21	0.41
1:D:111:ASN:O	1:D:119:PHE:HA	2.20	0.41
1:A:66:HIS:HB2	1:A:115:LEU:HD21	2.01	0.41
1:A:189:ASN:HB2	1:A:194:ASN:O	2.20	0.41
1:D:112:ASP:OD1	6:D:2019:HOH:O	2.22	0.41
1:A:68:PRO:HG2	1:A:127:GLN:NE2	2.36	0.41
1:B:146:PHE:CD1	1:B:152:PRO:HG3	2.56	0.40
1:D:189:ASN:HD21	1:D:236:ARG:H	1.69	0.40
1:C:18:LEU:HD11	1:D:212:LEU:HD22	2.03	0.40
1:C:143:SER:HB2	1:C:161:TRP:HE3	1.86	0.40

There are no symmetry-related clashes.

## 5.3 Torsion angles

### 5.3.1 Protein backbone

In the following table, the Percentiles column shows the percent Ramachandran outliers of the chain as a percentile score with respect to all X-ray entries followed by that with respect to entries of similar resolution.

The Analysed column shows the number of residues for which the backbone conformation was analysed, and the total number of residues.

Mol	Chain	Analysed	Favoured	Allowed	Outliers	Percentiles	
1	A	344/351 (98%)	337 (98%)	7 (2%)	0	100	100
1	B	344/351 (98%)	336 (98%)	8 (2%)	0	100	100
1	C	345/351 (98%)	337 (98%)	8 (2%)	0	100	100
1	D	345/351 (98%)	336 (97%)	9 (3%)	0	100	100
All	All	1378/1404 (98%)	1346 (98%)	32 (2%)	0	100	100

There are no Ramachandran outliers to report.

### 5.3.2 Protein sidechains ⓘ

In the following table, the Percentiles column shows the percent sidechain outliers of the chain as a percentile score with respect to all X-ray entries followed by that with respect to entries of similar resolution.

The Analysed column shows the number of residues for which the sidechain conformation was analysed, and the total number of residues.

Mol	Chain	Analysed	Rotameric	Outliers	Percentiles	
1	A	275/289 (95%)	274 (100%)	1 (0%)	93	97
1	B	258/289 (89%)	250 (97%)	8 (3%)	47	59
1	C	273/289 (94%)	273 (100%)	0	100	100
1	D	270/289 (93%)	269 (100%)	1 (0%)	93	97
All	All	1076/1156 (93%)	1066 (99%)	10 (1%)	84	92

All (10) residues with a non-rotameric sidechain are listed below:

Mol	Chain	Res	Type
1	A	94	ARG
1	B	4	HIS
1	B	16	LYS
1	B	22	ILE
1	B	94	ARG
1	B	222	ILE
1	B	236	ARG
1	B	285	GLN
1	B	306	HIS
1	D	306	HIS

Some sidechains can be flipped to improve hydrogen bonding and reduce clashes. All (7) such sidechains are listed below:

Mol	Chain	Res	Type
1	A	189	ASN
1	A	254	GLN
1	B	189	ASN
1	C	189	ASN
1	C	306	HIS
1	D	189	ASN
1	D	210	HIS

### 5.3.3 RNA ⓘ

There are no RNA molecules in this entry.

## 5.4 Non-standard residues in protein, DNA, RNA chains ⓘ

There are no non-standard protein/DNA/RNA residues in this entry.

## 5.5 Carbohydrates ⓘ

There are no carbohydrates in this entry.

## 5.6 Ligand geometry ⓘ

Of 13 ligands modelled in this entry, 4 are monoatomic - leaving 9 for Mogul analysis.

In the following table, the Counts columns list the number of bonds (or angles) for which Mogul statistics could be retrieved, the number of bonds (or angles) that are observed in the model and the number of bonds (or angles) that are defined in the chemical component dictionary. The Link column lists molecule types, if any, to which the group is linked. The Z score for a bond length (or angle) is the number of standard deviations the observed value is removed from the expected value. A bond length (or angle) with  $|Z| > 2$  is considered an outlier worth inspection. RMSZ is the root-mean-square of all Z scores of the bond lengths (or angles).

Mol	Type	Chain	Res	Link	Bond lengths			Bond angles		
					Counts	RMSZ	$\# Z  > 2$	Counts	RMSZ	$\# Z  > 2$
3	PEG	A	1351	-	6,6,6	0.52	0	5,5,5	0.43	0
4	SO4	A	1352	-	4,4,4	0.38	0	6,6,6	0.47	0
4	SO4	A	1353	-	4,4,4	0.40	0	6,6,6	0.58	0
5	PHE	A	1354	-	9,12,12	0.33	0	10,15,15	0.28	0
4	SO4	B	1351	-	4,4,4	0.64	0	6,6,6	0.25	0
5	PHE	B	1352	-	9,12,12	0.38	0	10,15,15	0.24	0
5	PHE	C	1351	-	9,12,12	0.30	0	10,15,15	0.20	0
4	SO4	D	1351	-	4,4,4	0.68	0	6,6,6	0.49	0
5	PHE	D	1352	-	9,12,12	0.54	0	10,15,15	0.42	0

In the following table, the Chirals column lists the number of chiral outliers, the number of chiral centers analysed, the number of these observed in the model and the number defined in the chemical component dictionary. Similar counts are reported in the Torsion and Rings columns. '-' means no outliers of that kind were identified.

Mol	Type	Chain	Res	Link	Chirals	Torsions	Rings
3	PEG	A	1351	-	-	0/4/4/4	0/0/0/0

*Continued on next page...*

*Continued from previous page...*

Mol	Type	Chain	Res	Link	Chirals	Torsions	Rings
4	SO4	A	1352	-	-	0/0/0/0	0/0/0/0
4	SO4	A	1353	-	-	0/0/0/0	0/0/0/0
5	PHE	A	1354	-	-	0/4/8/8	0/1/1/1
4	SO4	B	1351	-	-	0/0/0/0	0/0/0/0
5	PHE	B	1352	-	-	0/4/8/8	0/1/1/1
5	PHE	C	1351	-	-	0/4/8/8	0/1/1/1
4	SO4	D	1351	-	-	0/0/0/0	0/0/0/0
5	PHE	D	1352	-	-	0/4/8/8	0/1/1/1

There are no bond length outliers.

There are no bond angle outliers.

There are no chirality outliers.

There are no torsion outliers.

There are no ring outliers.

2 monomers are involved in 3 short contacts:

Mol	Chain	Res	Type	Clashes	Symm-Clashes
4	A	1352	SO4	2	0
4	B	1351	SO4	1	0

## 5.7 Other polymers [i](#)

There are no such residues in this entry.

## 5.8 Polymer linkage issues [i](#)

There are no chain breaks in this entry.

## 6 Fit of model and data ⓘ

### 6.1 Protein, DNA and RNA chains ⓘ

In the following table, the column labelled ‘#RSRZ> 2’ contains the number (and percentage) of RSRZ outliers, followed by percent RSRZ outliers for the chain as percentile scores relative to all X-ray entries and entries of similar resolution. The OWAB column contains the minimum, median, 95<sup>th</sup> percentile and maximum values of the occupancy-weighted average B-factor per residue. The column labelled ‘Q< 0.9’ lists the number of (and percentage) of residues with an average occupancy less than 0.9.

Mol	Chain	Analysed	<RSRZ>	#RSRZ>2	OWAB(Å <sup>2</sup> )	Q<0.9
1	A	346/351 (98%)	-0.06	4 (1%) 81 80	31, 44, 62, 78	0
1	B	346/351 (98%)	-0.02	8 (2%) 64 63	31, 50, 75, 87	0
1	C	347/351 (98%)	-0.06	7 (2%) 68 67	32, 46, 67, 98	0
1	D	347/351 (98%)	-0.08	7 (2%) 68 67	33, 48, 66, 80	0
All	All	1386/1404 (98%)	-0.06	26 (1%) 70 68	31, 47, 69, 98	0

All (26) RSRZ outliers are listed below:

Mol	Chain	Res	Type	RSRZ
1	B	348	ALA	3.7
1	B	295	GLY	3.4
1	B	294	ASP	3.3
1	A	291	LEU	3.0
1	A	294	ASP	3.0
1	D	4	HIS	2.7
1	D	3	HIS	2.6
1	D	317	VAL	2.6
1	D	292	GLU	2.5
1	C	294	ASP	2.5
1	A	164	ILE	2.5
1	B	349	ARG	2.5
1	B	346	ARG	2.4
1	A	4	HIS	2.3
1	B	296	GLY	2.3
1	C	164	ILE	2.3
1	C	168	THR	2.3
1	D	296	GLY	2.3
1	B	292	GLU	2.2
1	C	147	LEU	2.2
1	D	104	VAL	2.2

*Continued on next page...*



*Continued from previous page...*

Mol	Chain	Res	Type	RSRZ
1	C	167	ARG	2.1
1	B	250	GLU	2.1
1	C	163	ALA	2.1
1	D	103	THR	2.1
1	C	185	VAL	2.0

## 6.2 Non-standard residues in protein, DNA, RNA chains [i](#)

There are no non-standard protein/DNA/RNA residues in this entry.

## 6.3 Carbohydrates [i](#)

There are no carbohydrates in this entry.

## 6.4 Ligands [i](#)

In the following table, the Atoms column lists the number of modelled atoms in the group and the number defined in the chemical component dictionary. LLDF column lists the quality of electron density of the group with respect to its neighbouring residues in protein, DNA or RNA chains. The B-factors column lists the minimum, median, 95<sup>th</sup> percentile and maximum values of B factors of atoms in the group. The column labelled 'Q < 0.9' lists the number of atoms with occupancy less than 0.9.

Mol	Type	Chain	Res	Atoms	RSCC	RSR	LLDF	B-factors(Å <sup>2</sup> )	Q<0.9
4	SO4	A	1353	5/5	0.87	0.37	9.00	37,38,47,55	5
3	PEG	A	1351	7/7	0.84	0.21	2.56	73,79,82,82	0
4	SO4	A	1352	5/5	0.82	0.17	1.99	83,105,109,113	0
4	SO4	D	1351	5/5	0.82	0.19	1.43	65,68,88,92	0
4	SO4	B	1351	5/5	0.83	0.19	1.22	77,79,91,101	0
5	PHE	C	1351	12/12	0.96	0.12	-0.32	32,34,38,40	0
5	PHE	D	1352	12/12	0.96	0.12	-0.40	37,39,40,41	0
5	PHE	B	1352	12/12	0.96	0.10	-0.45	36,38,39,40	0
2	MN	C	1350	1/1	0.99	0.12	-0.55	50,50,50,50	0
5	PHE	A	1354	12/12	0.97	0.10	-0.61	30,34,36,38	0
2	MN	B	1350	1/1	0.99	0.08	-0.67	60,60,60,60	0
2	MN	A	1350	1/1	0.99	0.08	-1.18	43,43,43,43	0
2	MN	D	1350	1/1	0.99	0.06	-1.22	56,56,56,56	0

## 6.5 Other polymers ⓘ

There are no such residues in this entry.