



Full wwPDB X-ray Structure Validation Report ⓘ

Feb 19, 2016 – 07:30 PM GMT

PDB ID : 4UCK
Title : X-ray structure and activities of an essential Mononegavirales L- protein domain
Authors : Paesen, G.C.; Collet, A.; Sallamand, C.; Debart, F.; Vasseur, J.J.; Canard, B.; Decroly, E.; Grimes, J.M.
Deposited on : 2014-12-03
Resolution : 2.66 Å(reported)

This is a Full wwPDB X-ray Structure Validation Report for a publicly released PDB entry.
We welcome your comments at validation@mail.wwpdb.org
A user guide is available at
<http://wwpdb.org/validation/2016/XrayValidationReportHelp>
with specific help available everywhere you see the ⓘ symbol.

The following versions of software and data (see [references ⓘ](#)) were used in the production of this report:

MolProbity : 4.02b-467
Mogul : unknown
Xtriage (Phenix) : 1.9-1692
EDS : rb-20026982
Percentile statistics : 20151230.v01 (using entries in the PDB archive December 30th 2015)
Refmac : 5.8.0135
CCP4 : 6.5.0
Ideal geometry (proteins) : Engh & Huber (2001)
Ideal geometry (DNA, RNA) : Parkinson et al. (1996)
Validation Pipeline (wwPDB-VP) : rb-20026982

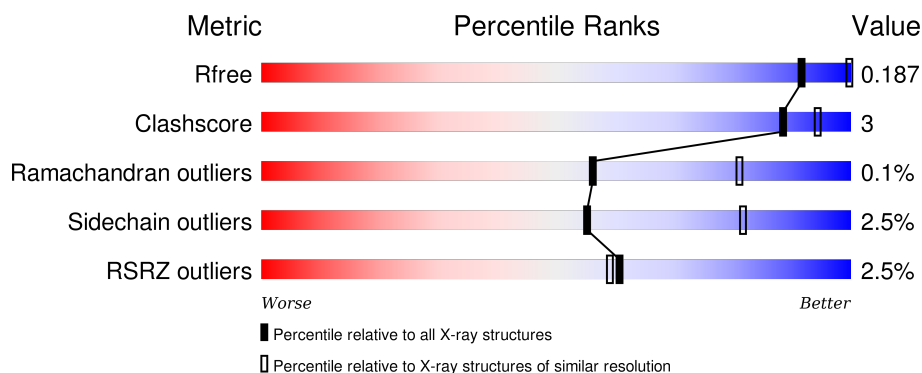
1 Overall quality at a glance

The following experimental techniques were used to determine the structure:

X-RAY DIFFRACTION

The reported resolution of this entry is 2.66 Å.

Percentile scores (ranging between 0-100) for global validation metrics of the entry are shown in the following graphic. The table shows the number of entries on which the scores are based.



Metric	Whole archive (#Entries)	Similar resolution (#Entries, resolution range(Å))
R_{free}	91344	3152 (2.70-2.62)
Clashscore	102246	3524 (2.70-2.62)
Ramachandran outliers	100387	3469 (2.70-2.62)
Sidechain outliers	100360	3469 (2.70-2.62)
RSRZ outliers	91569	3161 (2.70-2.62)

The table below summarises the geometric issues observed across the polymeric chains and their fit to the electron density. The red, orange, yellow and green segments on the lower bar indicate the fraction of residues that contain outliers for ≥ 3 , 2, 1 and 0 types of geometric quality criteria. A grey segment represents the fraction of residues that are not modelled. The numeric value for each fraction is indicated below the corresponding segment, with a dot representing fractions $\leq 5\%$. The upper red bar (where present) indicates the fraction of residues that have poor fit to the electron density. The numeric value is given above the bar.

Mol	Chain	Length	Quality of chain
1	A	415	 2% 80% 9% 11%
1	B	415	 3% 83% 7% 9%

2 Entry composition [i](#)

There are 4 unique types of molecules in this entry. The entry contains 6276 atoms, of which 0 are hydrogens and 0 are deuteriums.

In the tables below, the ZeroOcc column contains the number of atoms modelled with zero occupancy, the AltConf column contains the number of residues with at least one atom in alternate conformation and the Trace column contains the number of residues modelled with at most 2 atoms.

- Molecule 1 is a protein called RNA-DIRECTED RNA POLYMERASE L.

Mol	Chain	Residues	Atoms					ZeroOcc	AltConf	Trace
1	A	370	Total	C	N	O	S	0	0	0
			3011	1937	513	541	20			
1	B	376	Total	C	N	O	S	0	0	0
			3054	1961	520	553	20			

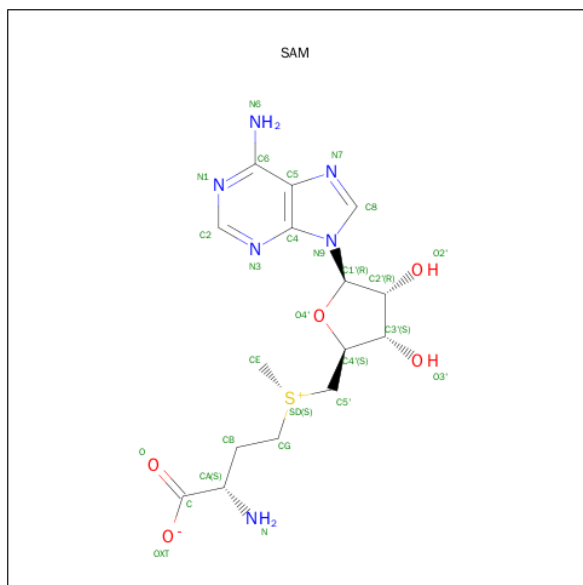
There are 20 discrepancies between the modelled and reference sequences:

Chain	Residue	Modelled	Actual	Comment	Reference
A	1599	MET	-	EXPRESSION TAG	UNP Q91L20
A	2006	SER	-	EXPRESSION TAG	UNP Q91L20
A	2007	GLY	-	EXPRESSION TAG	UNP Q91L20
A	2008	HIS	-	EXPRESSION TAG	UNP Q91L20
A	2009	HIS	-	EXPRESSION TAG	UNP Q91L20
A	2010	HIS	-	EXPRESSION TAG	UNP Q91L20
A	2011	HIS	-	EXPRESSION TAG	UNP Q91L20
A	2012	HIS	-	EXPRESSION TAG	UNP Q91L20
A	2013	HIS	-	EXPRESSION TAG	UNP Q91L20
A	1995	GLU	LYS	ENGINEERED MUTATION	UNP Q91L20
B	1599	MET	-	EXPRESSION TAG	UNP Q91L20
B	2006	SER	-	EXPRESSION TAG	UNP Q91L20
B	2007	GLY	-	EXPRESSION TAG	UNP Q91L20
B	2008	HIS	-	EXPRESSION TAG	UNP Q91L20
B	2009	HIS	-	EXPRESSION TAG	UNP Q91L20
B	2010	HIS	-	EXPRESSION TAG	UNP Q91L20
B	2011	HIS	-	EXPRESSION TAG	UNP Q91L20
B	2012	HIS	-	EXPRESSION TAG	UNP Q91L20
B	2013	HIS	-	EXPRESSION TAG	UNP Q91L20
B	1995	GLU	LYS	ENGINEERED MUTATION	UNP Q91L20

- Molecule 2 is ZINC ION (three-letter code: ZN) (formula: Zn).

Mol	Chain	Residues	Atoms		ZeroOcc	AltConf
2	B	1	Total	Zn	0	0
			1	1		
2	A	1	Total	Zn	0	0
			1	1		

- Molecule 3 is S-ADENOSYLMETHIONINE (three-letter code: SAM) (formula: $C_{15}H_{22}N_6O_5S$).



Mol	Chain	Residues	Atoms					ZeroOcc	AltConf
3	A	1	Total	C	N	O	S	0	0
			27	15	6	5	1		
3	B	1	Total	C	N	O	S	0	0
			27	15	6	5	1		

- Molecule 4 is water.

Mol	Chain	Residues	Atoms		ZeroOcc	AltConf
4	A	74	Total	O	0	0
			74	74		
4	B	81	Total	O	0	0
			81	81		

• Molecule 1: RNA-DIRECTED RNA POLYMERASE L



4 Data and refinement statistics

Property	Value	Source
Space group	P 21 21 21	Depositor
Cell constants a, b, c, α , β , γ	80.34Å 84.35Å 181.74Å 90.00° 90.00° 90.00°	Depositor
Resolution (Å)	76.51 – 2.66 76.51 – 2.66	Depositor EDS
% Data completeness (in resolution range)	98.5 (76.51-2.66) 98.7 (76.51-2.66)	Depositor EDS
R_{merge}	0.04	Depositor
R_{sym}	(Not available)	Depositor
$\langle I/\sigma(I) \rangle$ ¹	1.62 (at 2.65Å)	Xtriage
Refinement program	BUSTER 2.10.2	Depositor
R, R_{free}	0.186 , 0.204 0.194 , 0.187	Depositor DCC
R_{free} test set	1809 reflections (5.32%)	DCC
Wilson B-factor (Å ²)	74.7	Xtriage
Anisotropy	0.623	Xtriage
Bulk solvent k_{sol} (e/Å ³), B_{sol} (Å ²)	0.31 , 64.7	EDS
Estimated twinning fraction	0.026 for k,h,l	Xtriage
L-test for twinning ²	$\langle L \rangle = 0.49$, $\langle L^2 \rangle = 0.32$	Xtriage
Outliers	0 of 35814 reflections	Xtriage
F_o, F_c correlation	0.96	EDS
Total number of atoms	6276	wwPDB-VP
Average B, all atoms (Å ²)	90.0	wwPDB-VP

Xtriage's analysis on translational NCS is as follows: *The largest off-origin peak in the Patterson function is 3.49% of the height of the origin peak. No significant pseudotranslation is detected.*

¹Intensities estimated from amplitudes.

²Theoretical values of $\langle |L| \rangle$, $\langle L^2 \rangle$ for acentric reflections are 0.5, 0.375 respectively for untwinned datasets, and 0.333, 0.2 for perfectly twinned datasets.

5 Model quality

5.1 Standard geometry

Bond lengths and bond angles in the following residue types are not validated in this section: ZN, SAM

The Z score for a bond length (or angle) is the number of standard deviations the observed value is removed from the expected value. A bond length (or angle) with $|Z| > 5$ is considered an outlier worth inspection. RMSZ is the root-mean-square of all Z scores of the bond lengths (or angles).

Mol	Chain	Bond lengths		Bond angles	
		RMSZ	$\# Z > 5$	RMSZ	$\# Z > 5$
1	A	0.40	0/3075	0.63	0/4145
1	B	0.40	0/3120	0.63	0/4209
All	All	0.40	0/6195	0.63	0/8354

There are no bond length outliers.

There are no bond angle outliers.

There are no chirality outliers.

There are no planarity outliers.

5.2 Too-close contacts

In the following table, the Non-H and H(model) columns list the number of non-hydrogen atoms and hydrogen atoms in the chain respectively. The H(added) column lists the number of hydrogen atoms added and optimized by MolProbity. The Clashes column lists the number of clashes within the asymmetric unit, whereas Symm-Clashes lists symmetry related clashes.

Mol	Chain	Non-H	H(model)	H(added)	Clashes	Symm-Clashes
1	A	3011	0	3053	17	0
1	B	3054	0	3087	15	0
2	A	1	0	0	0	0
2	B	1	0	0	0	0
3	A	27	0	22	0	0
3	B	27	0	22	0	0
4	A	74	0	0	0	0
4	B	81	0	0	0	0
All	All	6276	0	6184	30	0

The all-atom clashscore is defined as the number of clashes found per 1000 atoms (including hydrogen atoms). The all-atom clashscore for this structure is 3.

All (30) close contacts within the same asymmetric unit are listed below, sorted by their clash magnitude.

Atom-1	Atom-2	Interatomic distance (Å)	Clash overlap (Å)
1:B:1671:GLY:H	1:B:1701:ASN:HD22	1.23	0.87
1:B:1952:LEU:HD22	1:B:2000:MET:HE3	1.88	0.56
1:A:1701:ASN:HD22	1:A:1731:GLU:HG2	1.71	0.55
1:B:1671:GLY:N	1:B:1701:ASN:HD22	2.01	0.53
1:A:1788:PHE:HZ	1:A:1851:ILE:HD11	1.74	0.52
1:B:1851:ILE:HD12	1:B:1853:LEU:HD21	1.93	0.51
1:B:1788:PHE:HZ	1:B:1851:ILE:HD11	1.75	0.51
1:B:1823:CYS:HB3	1:B:1863:CYS:CB	2.41	0.51
1:B:1914:GLN:HA	1:B:1917:LEU:HD12	1.93	0.50
1:A:1823:CYS:HB3	1:A:1863:CYS:CB	2.40	0.50
1:A:1851:ILE:HD12	1:A:1853:LEU:HD21	1.93	0.50
1:A:1973:ASN:HB3	1:B:1642:TYR:HB2	1.93	0.50
1:B:1671:GLY:H	1:B:1701:ASN:ND2	2.00	0.50
1:A:1914:GLN:HA	1:A:1917:LEU:HD12	1.93	0.49
1:B:1694:PHE:HB3	1:B:1697:GLU:HG2	1.96	0.47
1:A:1979:ILE:HD12	1:A:1982:ILE:HD11	1.96	0.47
1:A:1660:VAL:O	1:A:1998:GLY:HA3	2.15	0.46
1:A:1694:PHE:HB3	1:A:1697:GLU:HG2	1.97	0.46
1:A:1689:PRO:HG3	1:A:1775:ILE:HD12	1.98	0.46
1:A:1650:ASN:O	1:B:1645:GLY:HA3	2.16	0.46
1:B:1729:PRO:HB2	1:B:1732:TYR:HB3	1.99	0.45
1:A:1857:HIS:H	1:A:1857:HIS:CD2	2.36	0.43
1:A:1714:LYS:HE2	1:A:1743:ILE:HG21	2.00	0.43
1:B:1660:VAL:O	1:B:1998:GLY:HA3	2.19	0.43
1:B:1738:GLU:HG2	1:B:1740:SER:H	1.83	0.42
1:A:1673:LYS:HG2	1:A:1674:VAL:HG22	2.02	0.42
1:A:1738:GLU:HG2	1:A:1740:SER:H	1.84	0.41
1:B:1954:HIS:HE1	1:B:1971:LEU:O	2.04	0.41
1:A:1954:HIS:HE1	1:A:1971:LEU:O	2.04	0.41
1:A:1911:LEU:HD12	1:A:1956:LEU:HD22	2.02	0.40

There are no symmetry-related clashes.

5.3 Torsion angles ⓘ

5.3.1 Protein backbone ⓘ

In the following table, the Percentiles column shows the percent Ramachandran outliers of the chain as a percentile score with respect to all X-ray entries followed by that with respect to entries of similar resolution.

The Analysed column shows the number of residues for which the backbone conformation was analysed, and the total number of residues.

Mol	Chain	Analysed	Favoured	Allowed	Outliers	Percentiles	
1	A	364/415 (88%)	350 (96%)	13 (4%)	1 (0%)	46	72
1	B	372/415 (90%)	360 (97%)	12 (3%)	0	100	100
All	All	736/830 (89%)	710 (96%)	25 (3%)	1 (0%)	56	81

All (1) Ramachandran outliers are listed below:

Mol	Chain	Res	Type
1	A	1729	PRO

5.3.2 Protein sidechains ⓘ

In the following table, the Percentiles column shows the percent sidechain outliers of the chain as a percentile score with respect to all X-ray entries followed by that with respect to entries of similar resolution.

The Analysed column shows the number of residues for which the sidechain conformation was analysed, and the total number of residues.

Mol	Chain	Analysed	Rotameric	Outliers	Percentiles	
1	A	334/374 (89%)	325 (97%)	9 (3%)	52	80
1	B	340/374 (91%)	332 (98%)	8 (2%)	57	82
All	All	674/748 (90%)	657 (98%)	17 (2%)	55	82

All (17) residues with a non-rotameric sidechain are listed below:

Mol	Chain	Res	Type
1	A	1674	VAL
1	A	1713	ILE
1	A	1722	ASP
1	A	1730	LEU
1	A	1738	GLU
1	A	1771	ASP
1	A	1858	HIS
1	A	1962	GLU
1	A	1966	ASP
1	B	1690	LYS
1	B	1738	GLU
1	B	1771	ASP

Continued on next page...

Continued from previous page...

Mol	Chain	Res	Type
1	B	1785	ARG
1	B	1858	HIS
1	B	1869	ASN
1	B	1962	GLU
1	B	1966	ASP

Some sidechains can be flipped to improve hydrogen bonding and reduce clashes. All (10) such sidechains are listed below:

Mol	Chain	Res	Type
1	A	1857	HIS
1	A	1894	ASN
1	A	1954	HIS
1	A	1973	ASN
1	B	1659	HIS
1	B	1701	ASN
1	B	1858	HIS
1	B	1868	GLN
1	B	1954	HIS
1	B	1973	ASN

5.3.3 RNA [i](#)

There are no RNA molecules in this entry.

5.4 Non-standard residues in protein, DNA, RNA chains [i](#)

There are no non-standard protein/DNA/RNA residues in this entry.

5.5 Carbohydrates [i](#)

There are no carbohydrates in this entry.

5.6 Ligand geometry [i](#)

Of 4 ligands modelled in this entry, 2 are monoatomic - leaving 2 for Mogul analysis.

In the following table, the Counts columns list the number of bonds (or angles) for which Mogul statistics could be retrieved, the number of bonds (or angles) that are observed in the model and the number of bonds (or angles) that are defined in the chemical component dictionary. The Link

column lists molecule types, if any, to which the group is linked. The Z score for a bond length (or angle) is the number of standard deviations the observed value is removed from the expected value. A bond length (or angle) with $|Z| > 2$ is considered an outlier worth inspection. RMSZ is the root-mean-square of all Z scores of the bond lengths (or angles).

Mol	Type	Chain	Res	Link	Bond lengths			Bond angles		
					Counts	RMSZ	$\# Z > 2$	Counts	RMSZ	$\# Z > 2$
3	SAM	A	2409	-	23,29,29	0.65	0	15,42,42	0.62	0
3	SAM	B	2409	-	23,29,29	0.66	0	15,42,42	0.62	0

In the following table, the Chirals column lists the number of chiral outliers, the number of chiral centers analysed, the number of these observed in the model and the number defined in the chemical component dictionary. Similar counts are reported in the Torsion and Rings columns. '-' means no outliers of that kind were identified.

Mol	Type	Chain	Res	Link	Chirals	Torsions	Rings
3	SAM	A	2409	-	-	0/8/33/33	0/3/3/3
3	SAM	B	2409	-	-	0/8/33/33	0/3/3/3

There are no bond length outliers.

There are no bond angle outliers.

There are no chirality outliers.

There are no torsion outliers.

There are no ring outliers.

No monomer is involved in short contacts.

5.7 Other polymers [i](#)

There are no such residues in this entry.

5.8 Polymer linkage issues [i](#)

There are no chain breaks in this entry.

6 Fit of model and data [i](#)

6.1 Protein, DNA and RNA chains [i](#)

In the following table, the column labelled ‘#RSRZ> 2’ contains the number (and percentage) of RSRZ outliers, followed by percent RSRZ outliers for the chain as percentile scores relative to all X-ray entries and entries of similar resolution. The OWAB column contains the minimum, median, 95th percentile and maximum values of the occupancy-weighted average B-factor per residue. The column labelled ‘Q< 0.9’ lists the number of (and percentage) of residues with an average occupancy less than 0.9.

Mol	Chain	Analysed	<RSRZ>	#RSRZ>2	OWAB(Å ²)	Q<0.9
1	A	370/415 (89%)	0.44	7 (1%) 70 69	65, 85, 132, 173	0
1	B	376/415 (90%)	0.46	12 (3%) 51 50	63, 83, 124, 185	0
All	All	746/830 (89%)	0.45	19 (2%) 61 59	63, 84, 130, 185	0

All (19) RSRZ outliers are listed below:

Mol	Chain	Res	Type	RSRZ
1	B	1724	LEU	4.9
1	B	1723	ASP	3.7
1	B	1726	HIS	3.7
1	B	1638	THR	3.6
1	A	1937	GLU	3.4
1	A	1724	LEU	3.1
1	A	1911	LEU	2.7
1	B	1785	ARG	2.3
1	B	1808	TYR	2.3
1	B	1636	TYR	2.2
1	B	1765	ILE	2.2
1	A	1642	TYR	2.2
1	A	1820	ALA	2.2
1	B	1867	ILE	2.2
1	B	1637	ASP	2.1
1	A	1617	ASP	2.1
1	A	1906	ILE	2.0
1	B	1906	ILE	2.0
1	B	1727	HIS	2.0

6.2 Non-standard residues in protein, DNA, RNA chains [i](#)

There are no non-standard protein/DNA/RNA residues in this entry.

6.3 Carbohydrates [i](#)

There are no carbohydrates in this entry.

6.4 Ligands [i](#)

In the following table, the Atoms column lists the number of modelled atoms in the group and the number defined in the chemical component dictionary. LLDF column lists the quality of electron density of the group with respect to its neighbouring residues in protein, DNA or RNA chains. The B-factors column lists the minimum, median, 95th percentile and maximum values of B factors of atoms in the group. The column labelled 'Q< 0.9' lists the number of atoms with occupancy less than 0.9.

Mol	Type	Chain	Res	Atoms	RSCC	RSR	LLDF	B-factors(\AA^2)	Q<0.9
3	SAM	A	2409	27/27	0.96	0.23	0.68	68,75,84,86	0
2	ZN	A	2408	1/1	0.99	0.20	-0.04	78,78,78,78	0
2	ZN	B	2408	1/1	1.00	0.20	-0.25	77,77,77,77	0
3	SAM	B	2409	27/27	0.96	0.20	-0.54	69,80,92,94	0

6.5 Other polymers [i](#)

There are no such residues in this entry.